

# V&V Reference Report

## L2 ASCDS Version : 8.4.4

Observation 9916 - L2 Version 2  
Chandra X-Ray Center

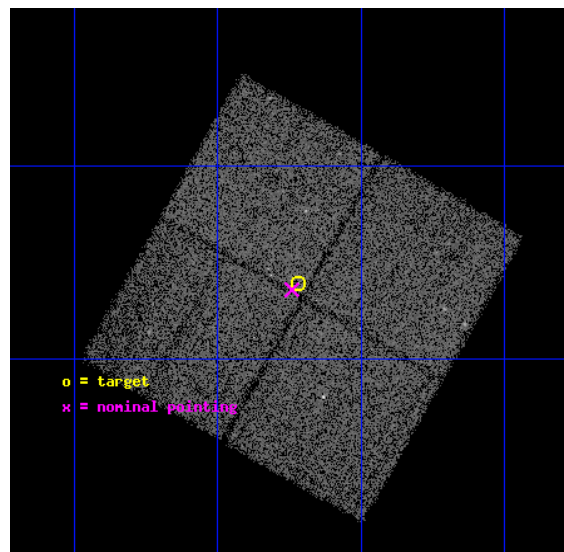
L2 Processing Date : May 30 2012

## Contents

<b>1</b>	<b>Front</b>	<b>2</b>
<b>2</b>	<b>OBI</b>	<b>3</b>
2.1	OBI . . . . .	3
2.1.1	Images . . . . .	3
2.1.2	Bias . . . . .	3
2.1.3	Parameters . . . . .	4
2.1.4	Events . . . . .	4
2.2	Compared Parameters . . . . .	5
2.3	Aspect . . . . .	6
2.4	Star Slots . . . . .	9
2.4.1	Slot 3 . . . . .	9
2.4.2	Slot 4 . . . . .	10
2.4.3	Slot 5 . . . . .	11
2.4.4	Slot 6 . . . . .	12
2.4.5	Slot 7 . . . . .	13
2.5	FID Slots . . . . .	14
2.5.1	Slot 0 . . . . .	14
2.5.2	Slot 1 . . . . .	15
2.5.3	Slot 2 . . . . .	16
<b>A</b>	<b>Summary</b>	<b>17</b>
A.1	Status . . . . .	17
A.2	Comments . . . . .	17

# 1 Front

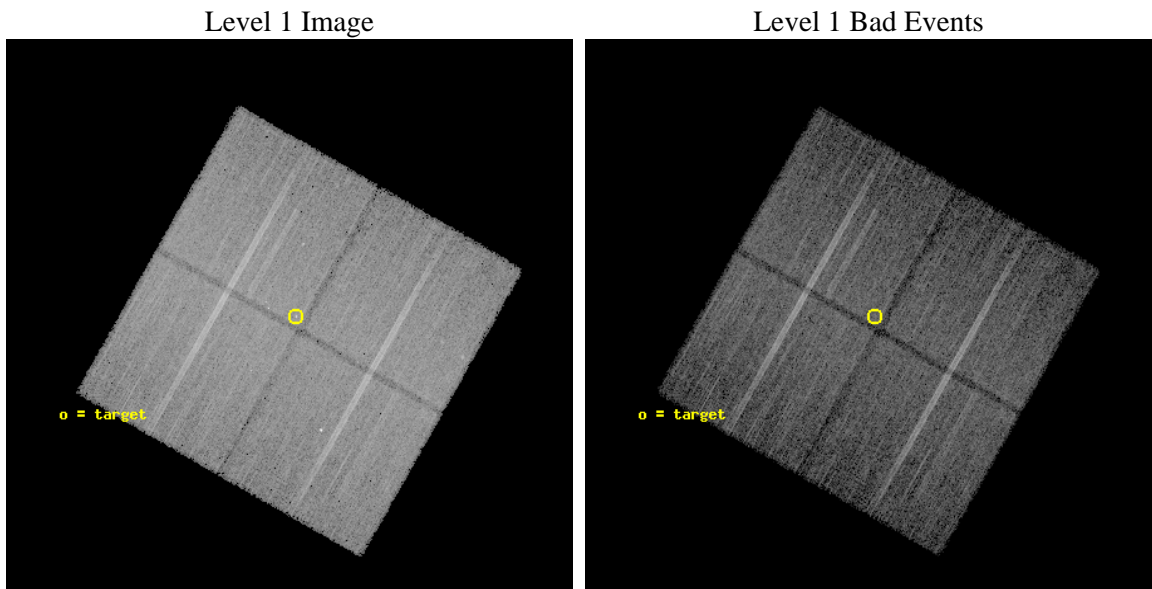
seq_num	200532	Sequence number
obs_id	9916	Observation id
title	ToO Studies with CXO of Pre-Main Sequence Stars Undergoing Optical Outbursts	Proposal title
observer	Professor David Weintraub	Principal investigator
object	V1647 Ori	Source name
dtcycle	0	&#160
cycle	P	events from which exps? Prim/Second/Both
ra_targ	86.554583	Observer's specified target RA [deg]
dec_targ	-0.101333	Observer's specified target Dec [deg]
ra_nom	86.560524330475	Nominal RA [deg]
dec_nom	-0.10684103593141	Nominal Dec [deg]
roll_nom	299.68171108366	Nominal Roll [deg]
revision	2	Processing version of data
ontime	18649.600143433	Sum of GTIs [s]
livetime	18405.929387923	Livetime [s]
ontime0	18649.600143433	Sum of GTIs [s]
ontime1	18646.459133208	Sum of GTIs [s]
ontime2	18649.600143433	Sum of GTIs [s]
ontime3	18649.600143433	Sum of GTIs [s]
l2events	89364	Number of level 2 events



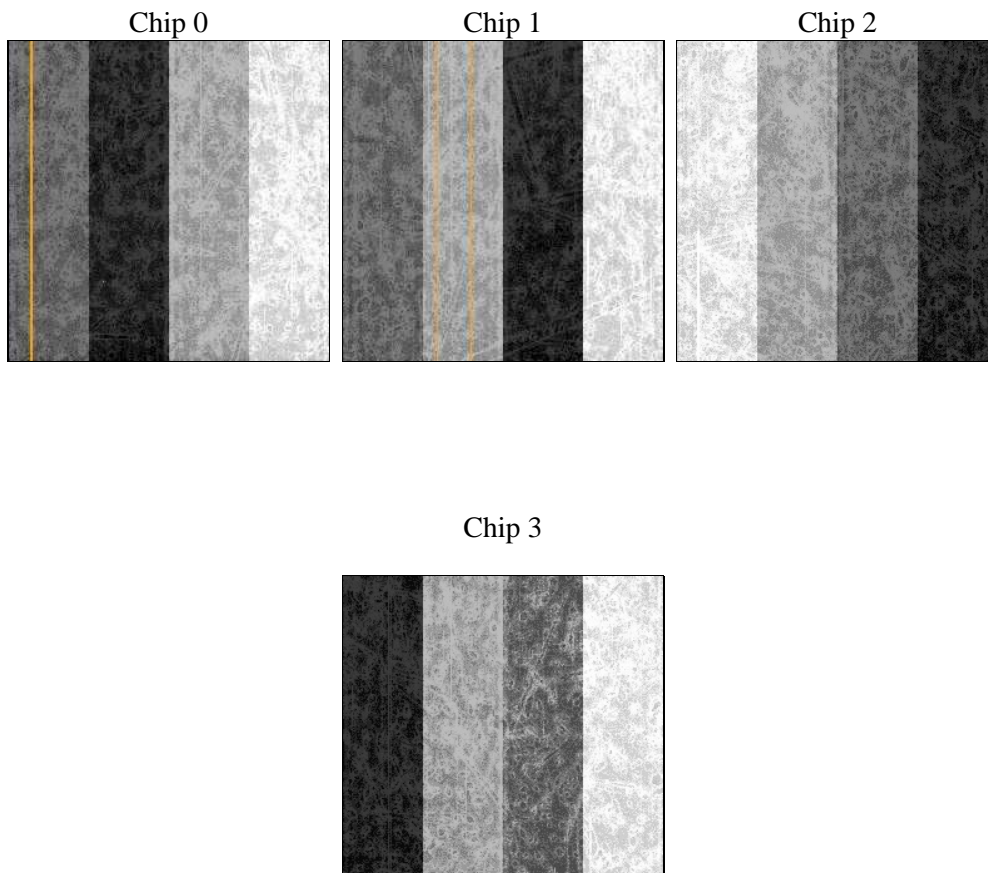
## 2 OBI

### 2.1 OBI

#### 2.1.1 Images



#### 2.1.2 Bias



### 2.1.3 Parameters

obi_num	0	Obi number	sched_exp_time	18490.613000	[s] Scheduled observation exposure time
ascdsver	8.4.4	Processing system revision	ontime	18649.600143433	Sum of GTIs [s]
caldbver	4.4.9	&#160	ontime0	18649.600143433	Sum of GTIs [s]
date	2012-05-30T05:54:47	Date and time of file creation	ontime1	18646.459133208	Sum of GTIs [s]
revision	2	Processing version of data	ontime2	18649.600143433	Sum of GTIs [s]
			ontime3	18649.600143433	Sum of GTIs [s]
			l1events	791280	Number of level 1 events

### 2.1.4 Events

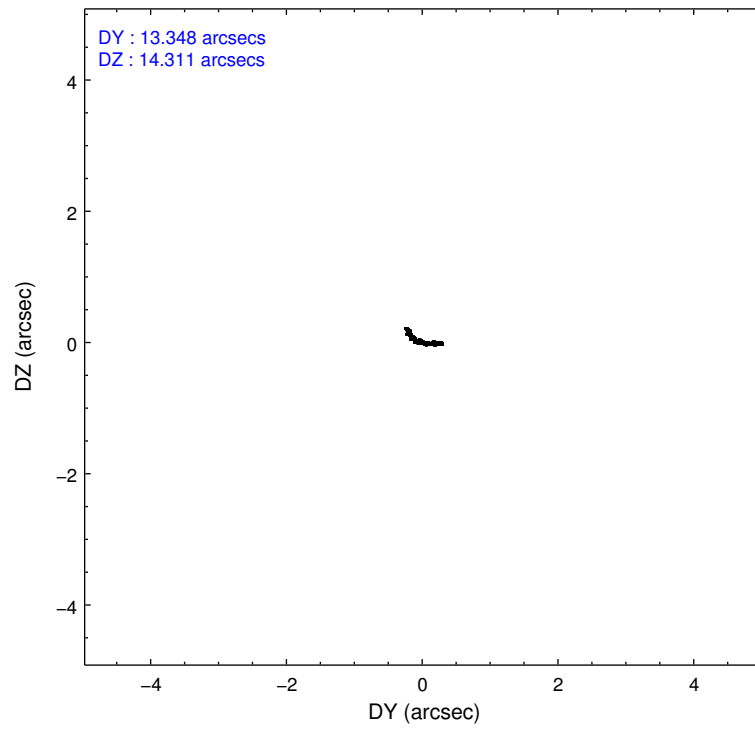
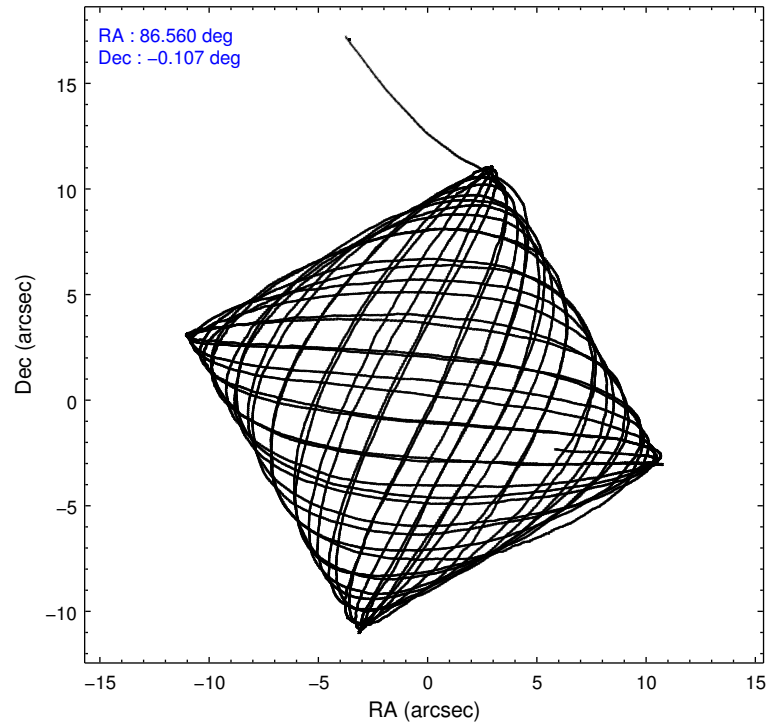
	ccd 0	ccd 1	ccd 2	ccd 3
level 1 events	187012	192156	209471	202641
rejected events	160726	165213	185323	176779
rejected %	85%	85%	88%	87%

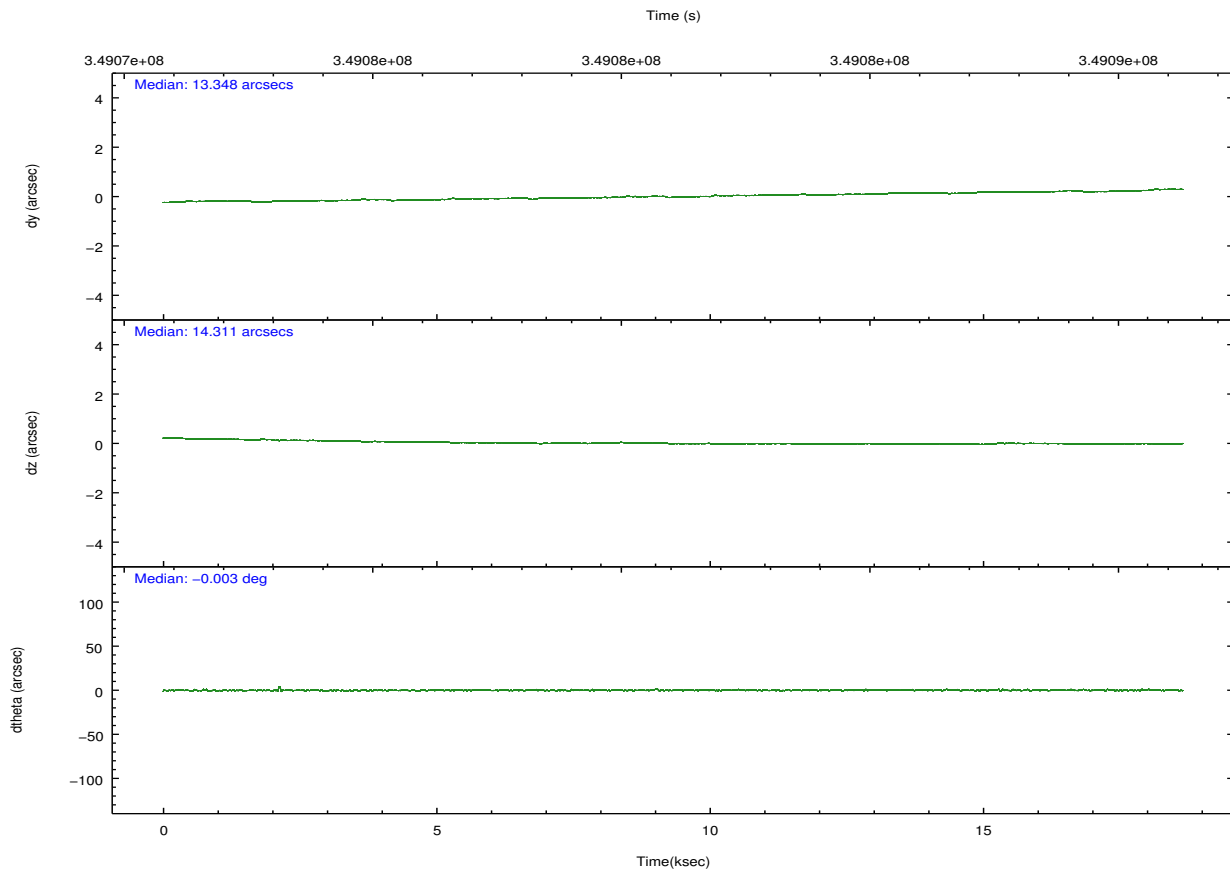
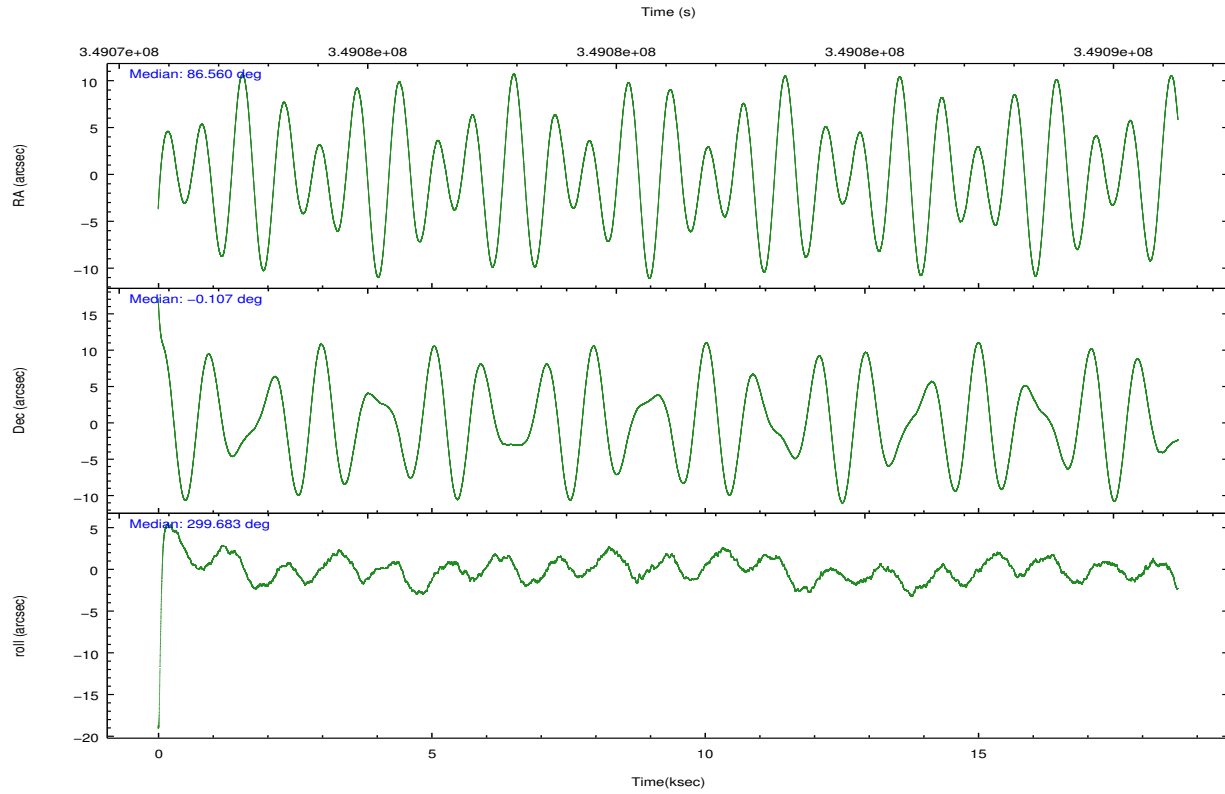
	ccd 0	ccd 1	ccd 2	ccd 3
grade 0 events	12935	11582	11235	12624
	6%	6%	5%	6%
grade 1 events	145	122	140	176
	0%	0%	0%	0%
grade 2 events	5854	6670	5435	5295
	3%	3%	2%	2%
grade 3 events	2458	2600	2287	2428
	1%	1%	1%	1%
grade 4 events	2239	2433	2322	2425
	1%	1%	1%	1%
grade 5 events	8578	9229	8618	9893
	4%	4%	4%	4%
grade 6 events	4447	5328	4339	4639
	2%	2%	2%	2%
grade 7 events	150356	154192	175095	165161
	80%	80%	83%	81%

## 2.2 Compared Parameters

Parameter	Planned	Actual	Parameter	Planned	Actual
Instrument	ACIS	ACIS	Obspar format version number	7	7
Detector	ACIS-0123	ACIS-0123	Obspar file type	PREDICTED	ACTUAL
Grating	NONE	NONE	Obspar update status	NONE	UPDATED
Data mode	FAINT	FAINT	Number of optional ACIS chips dropped	0	0
Observation mode	POINTING	POINTING	On-chip summing requested	N	N
[deg] Pointing RA	86.536697	86.56052433047456	Subarray requested	NONE	NONE
[deg] Pointing Dec	-0.093066	-0.1068410359314124	Alternating exposures requested	N	N
[deg] Pointing Roll	299.472992	299.6817110836604	[s] Primary exposure time	0.000000	3.1
[mm] SIM focus pos	-0.782348	-0.7809083437167272			
[mm] SIM defocus	0	0.001439871863259334			
[mm] SIM translation stage pos	-233.592463	-233.5874344608287			
[mm] SIM translation stage offset	0	-0.005018542100998502			
[s] Observation start time (MET)	349071870.184000	349070314.65491			
Observation start date	2009-01-23T04:23:24	2009-01-23T03:58:34			
[s] Observation end time (MET)	349090361.184000	349090598.38091			
Observation end date	2009-01-23T09:31:35	2009-01-23T09:36:38			
Read mode	TIMED	TIMED			

## 2.3 Aspect



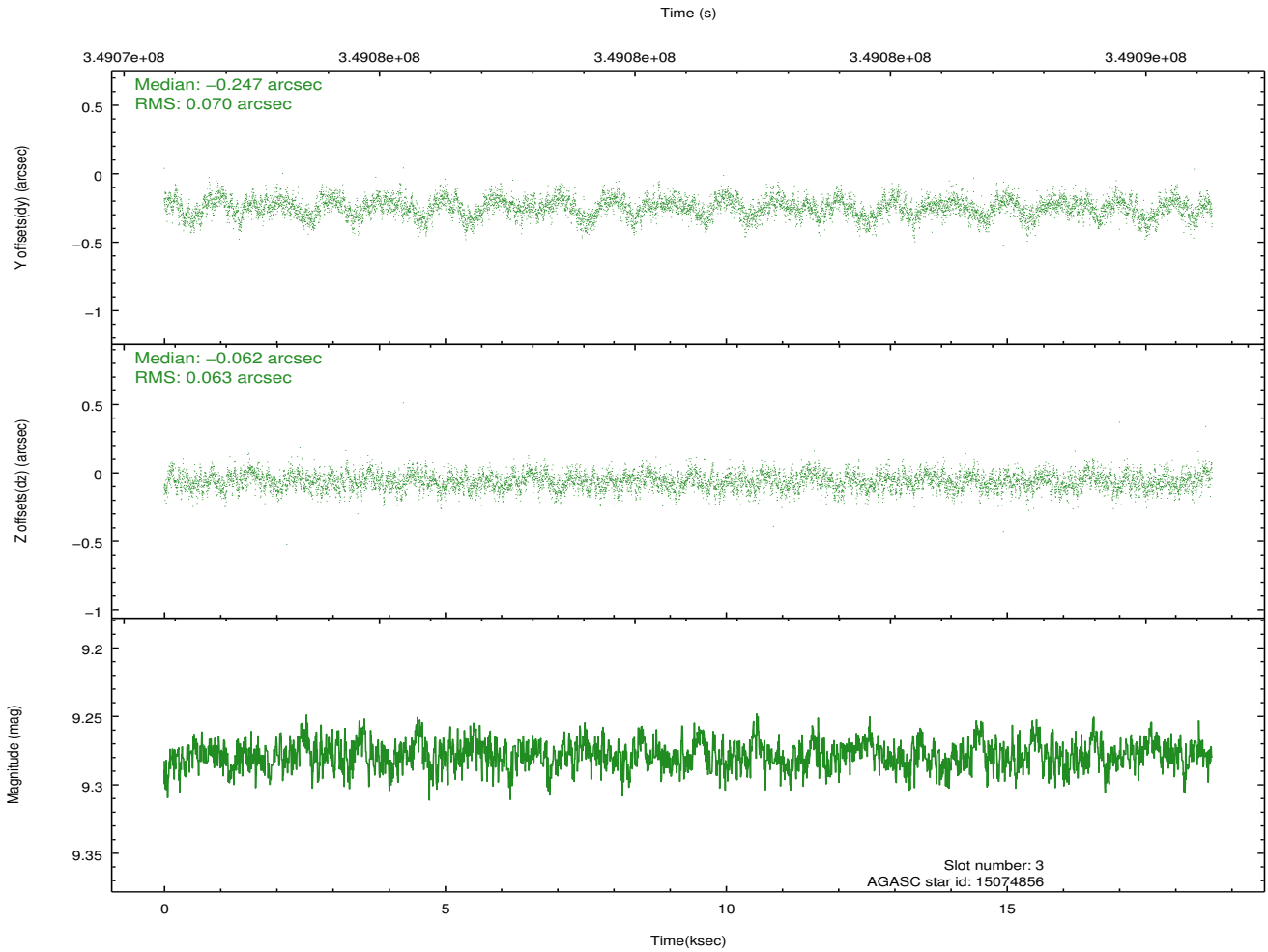
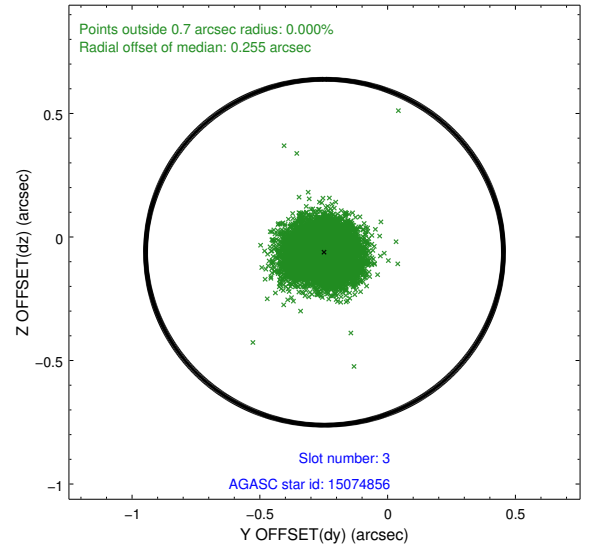
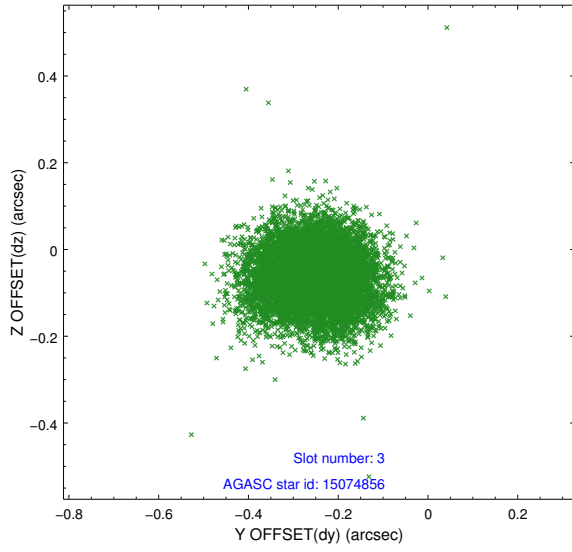


### Slot Statistics

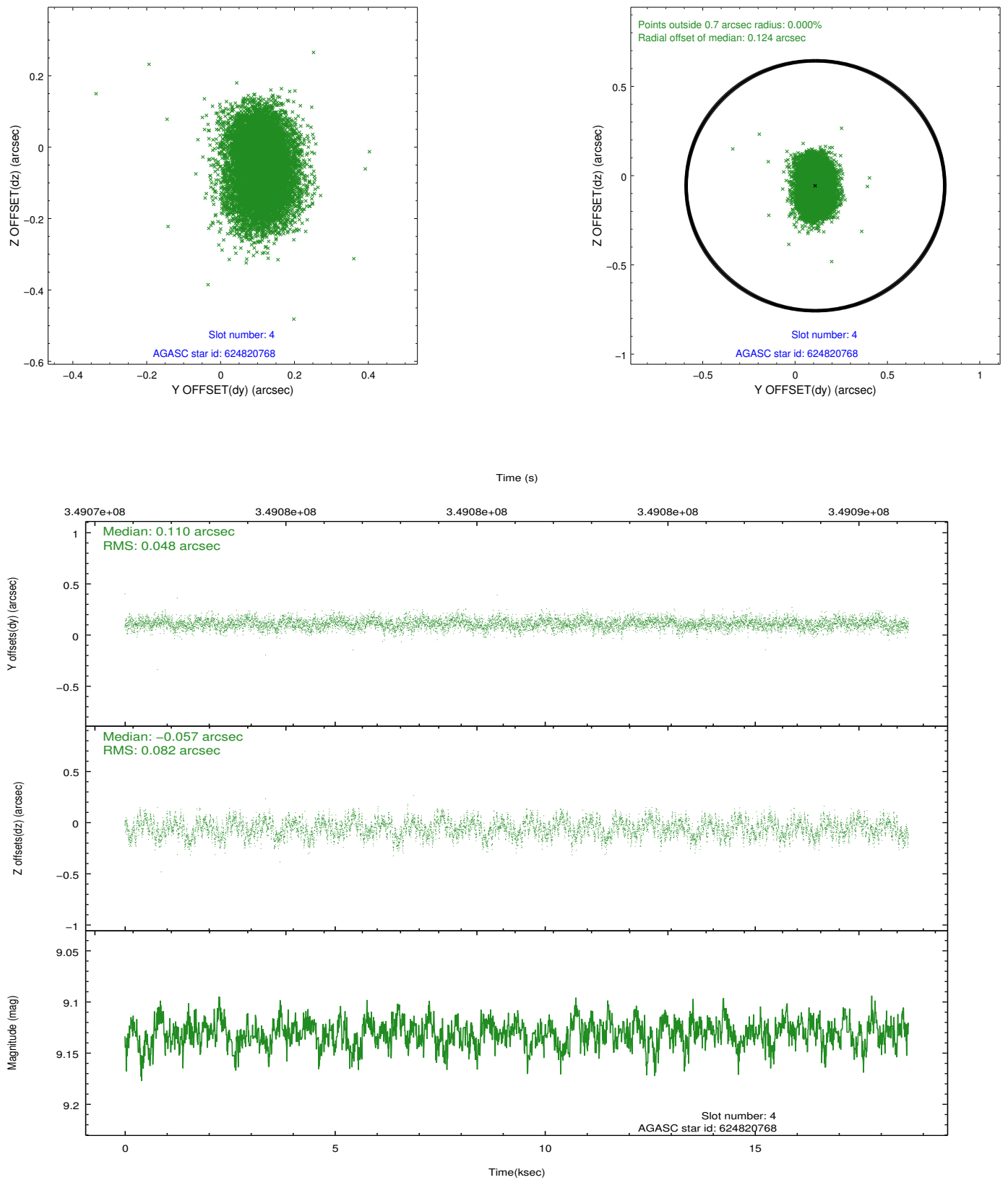
slot	status	id	mag	n_pts	med_dy	med_dz	dr1	dr2	ra	dec	mean_y	mean_z
0	FID	ACIS-I-1	7.06	4549	0.019	0.030	0.007	0.012	0.000000	0.000000	926.18	-837.88
1	FID	ACIS-I-5	7.04	4549	-0.185	0.038	0.010	0.017	0.000000	0.000000	-1822.04	1059.47
2	FID	ACIS-I-6	7.06	4548	0.075	0.002	0.008	0.013	0.000000	0.000000	391.51	1704.21
3	GUIDE	15074856	9.28	9091	-0.247	-0.062	0.100	0.162	85.760802	0.169633	-2197.26	-1966.54
4	GUIDE	624820768	9.13	9086	0.110	-0.057	0.101	0.164	86.202480	-0.061953	-689.05	-992.47
5	GUIDE	624954088	9.59	9082	0.238	0.177	0.149	0.231	86.606399	-0.671650	1937.54	-806.22
6	GUIDE	624954400	9.16	9097	0.012	-0.048	0.116	0.189	86.607838	-0.762568	2225.11	-962.98
7	GUIDE	15079656	8.34	9100	-0.107	-0.006	0.067	0.106	85.722633	0.032172	-1833.65	-2329.49

## 2.4 Star Slots

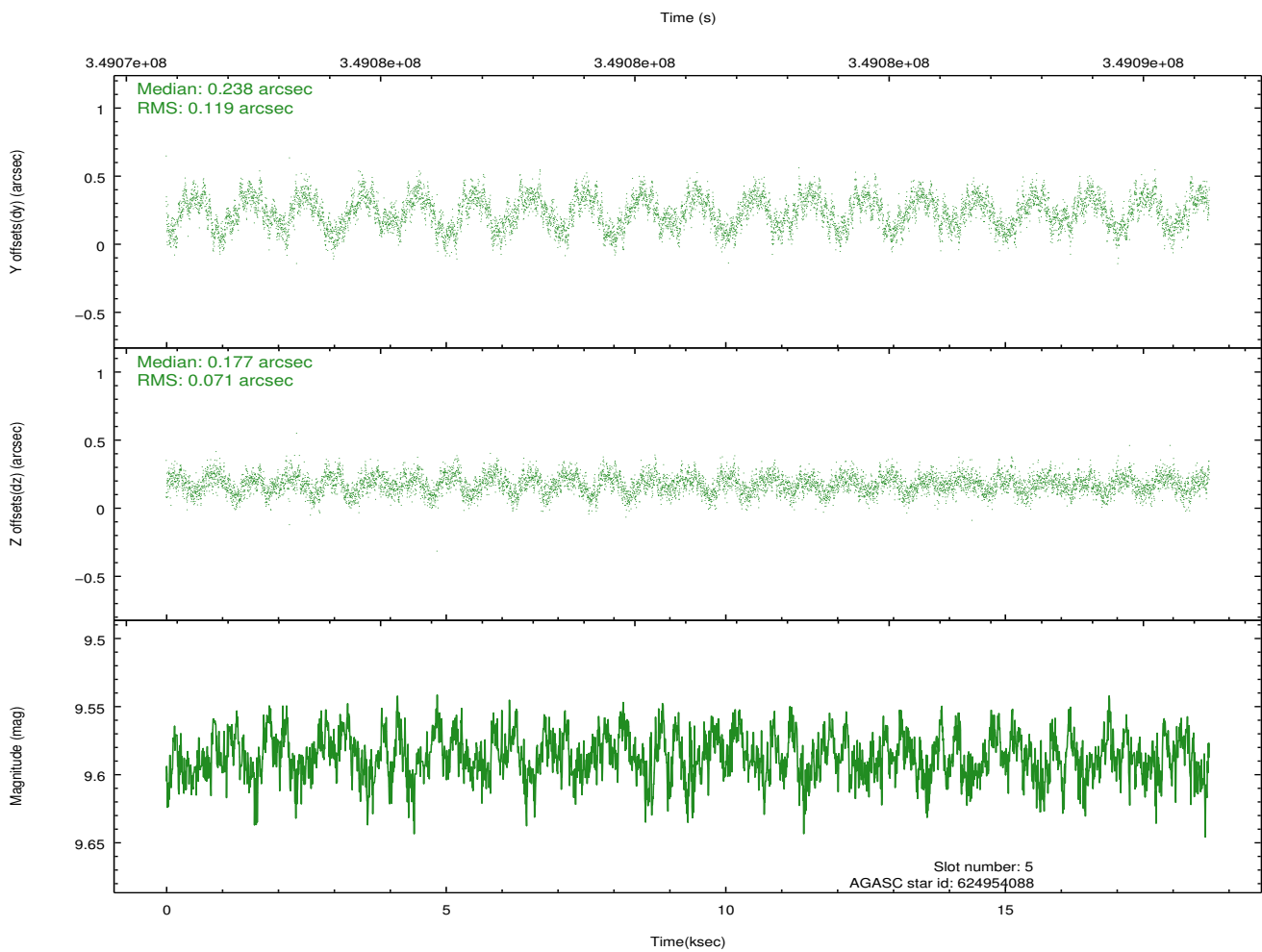
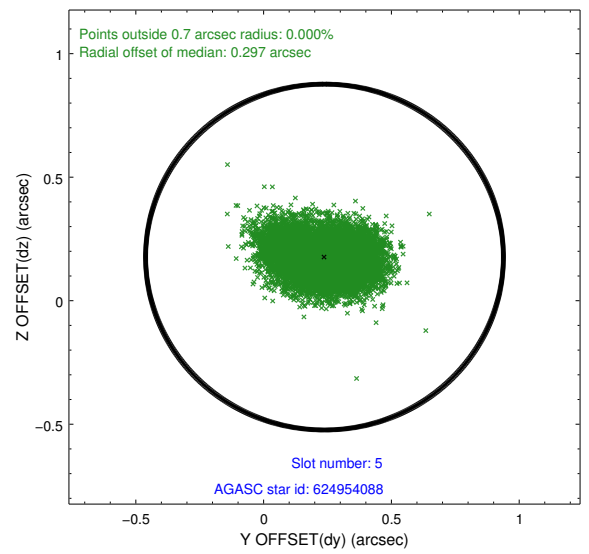
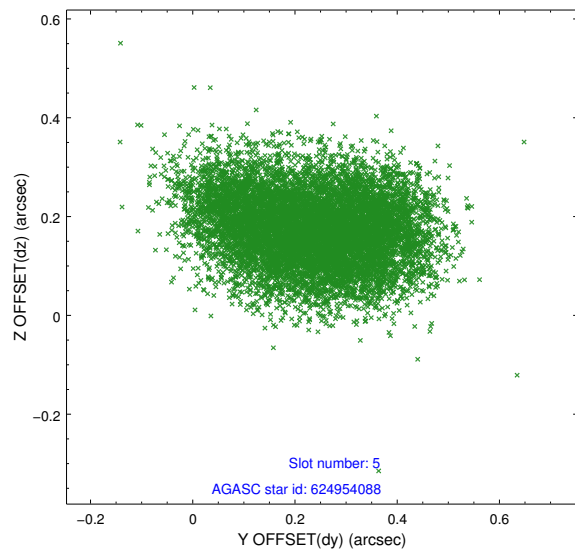
### 2.4.1 Slot 3



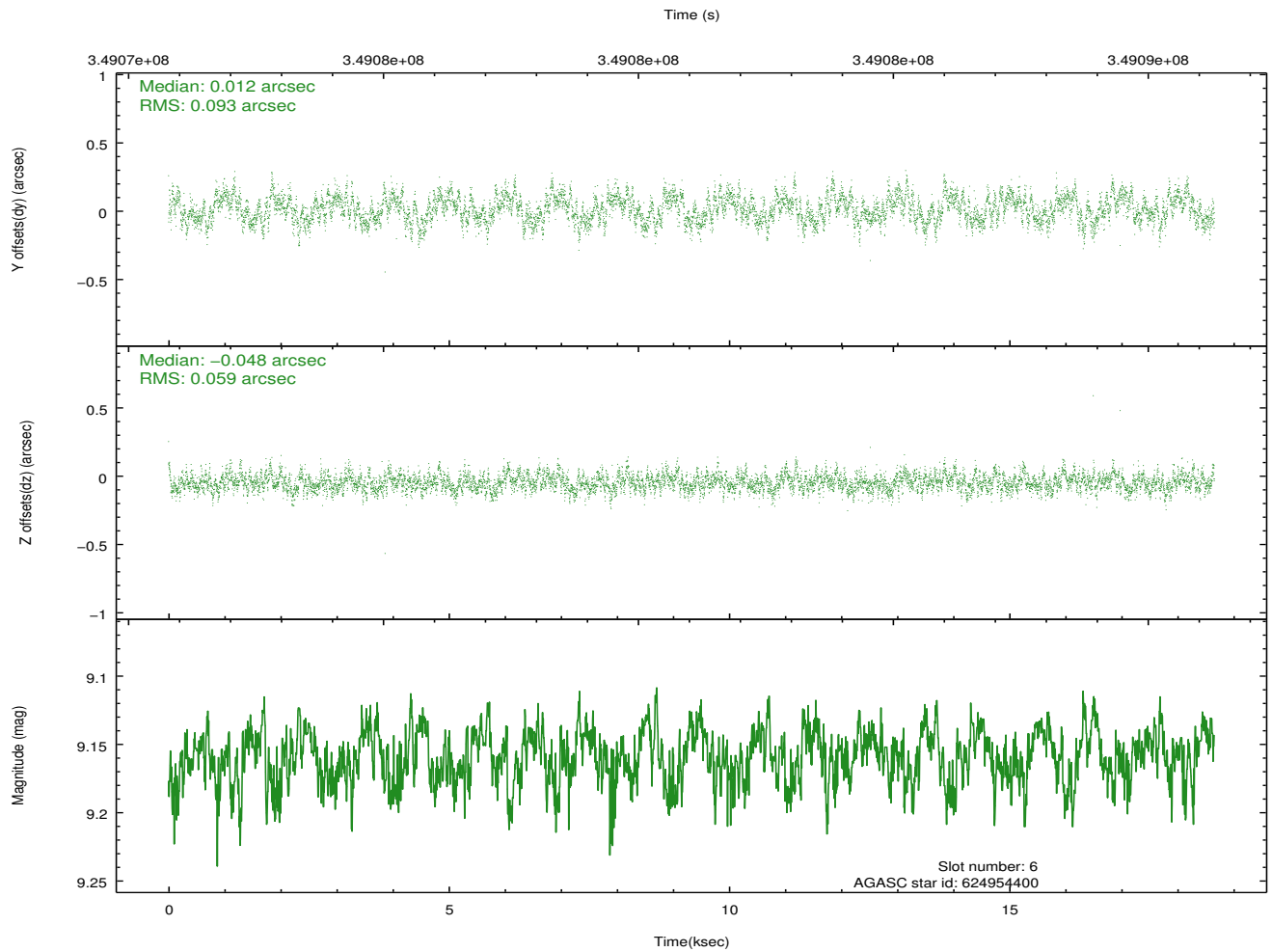
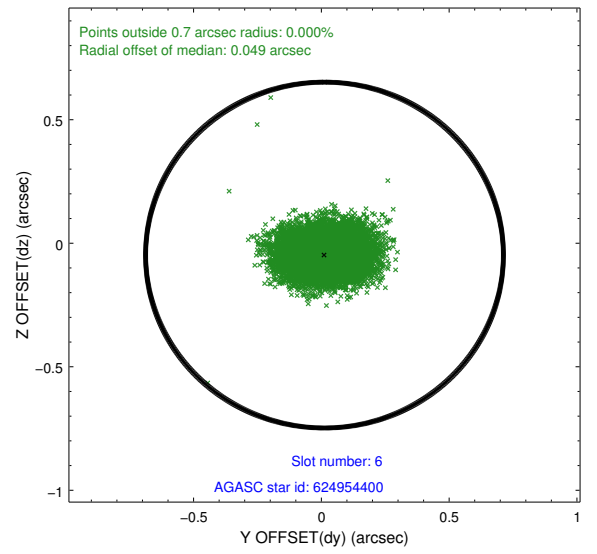
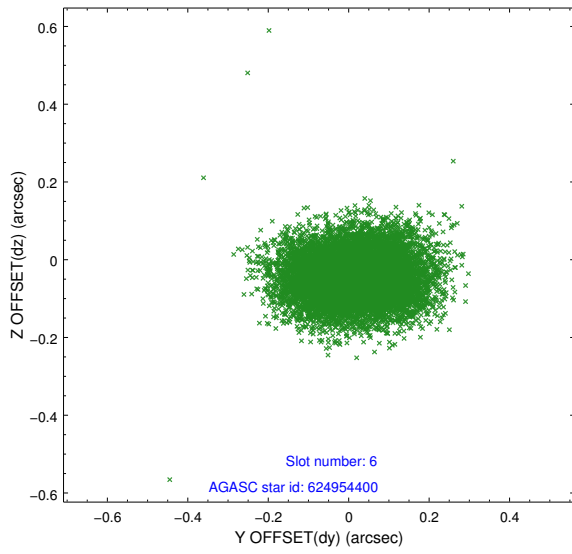
## 2.4.2 Slot 4



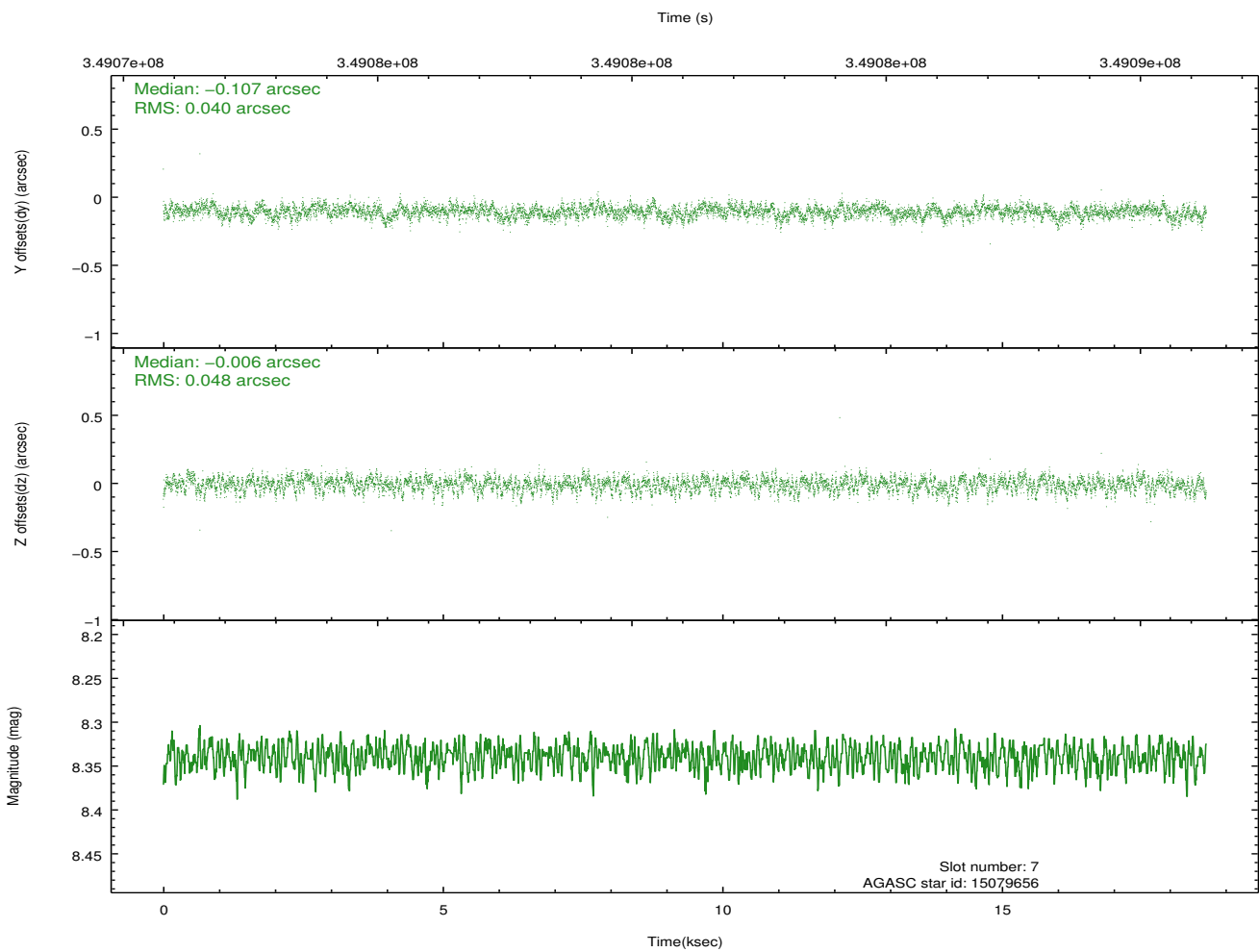
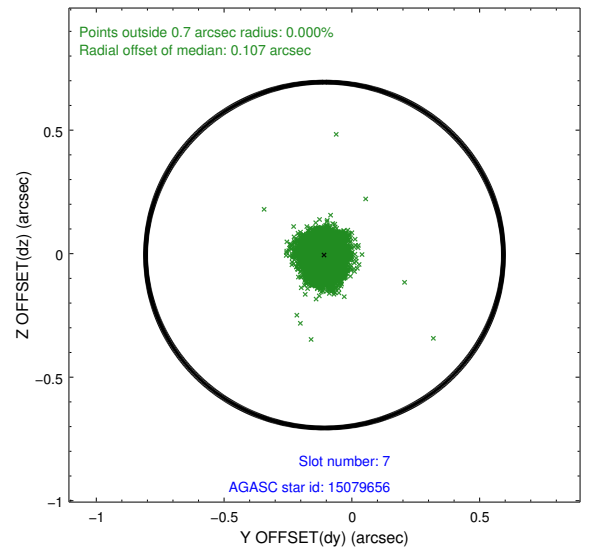
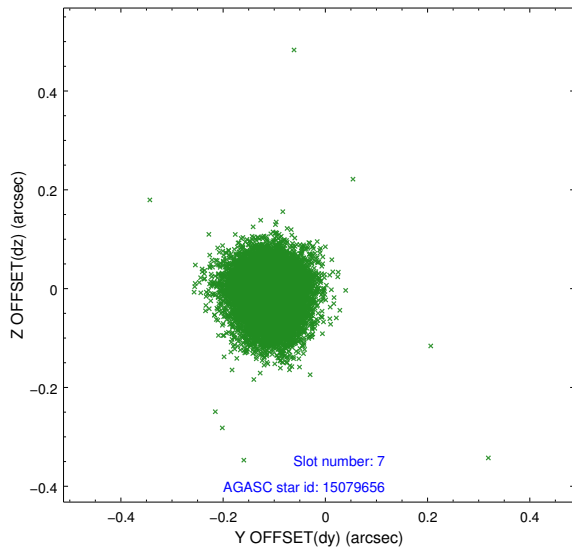
### 2.4.3 Slot 5



### 2.4.4 Slot 6

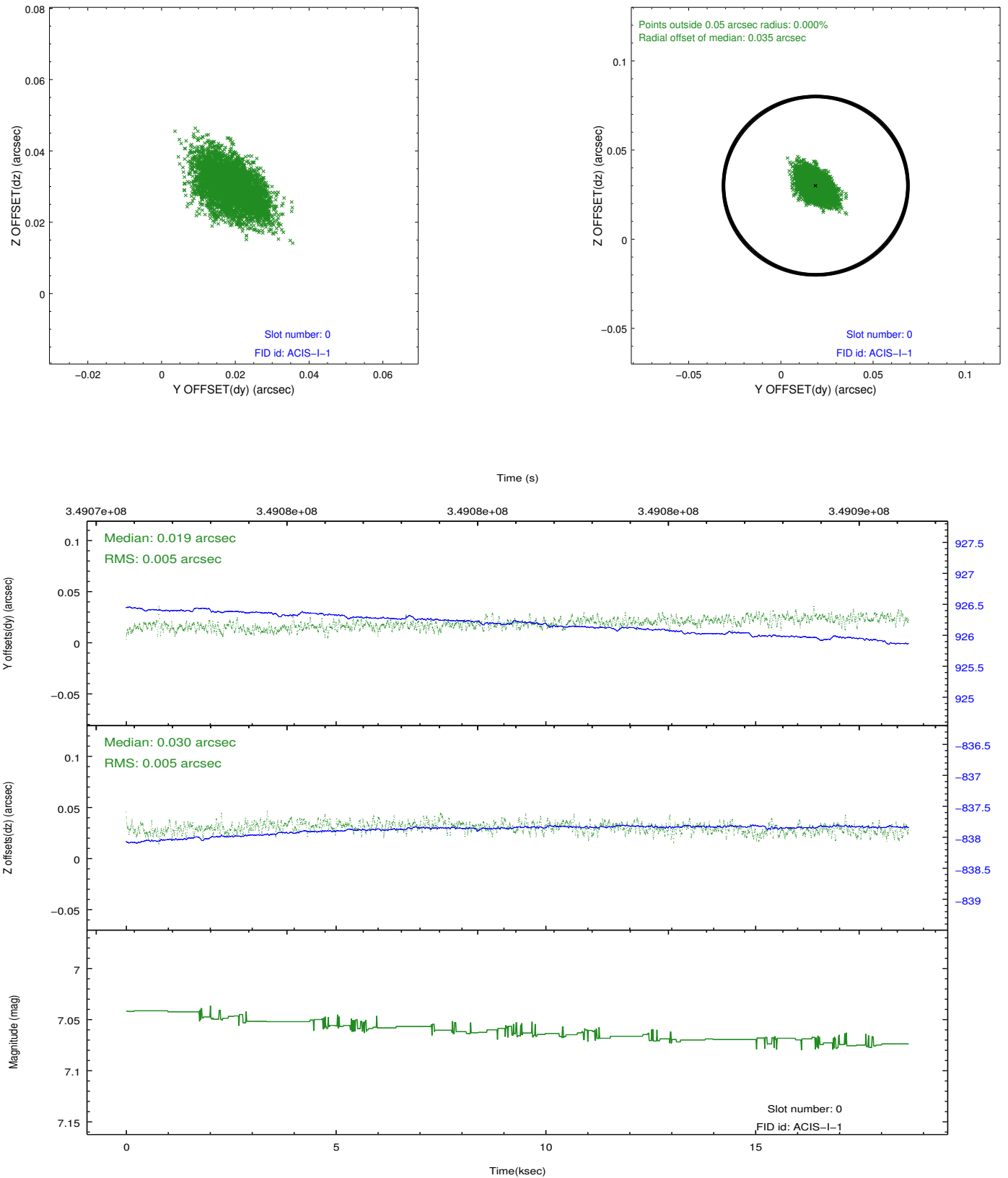


## 2.4.5 Slot 7

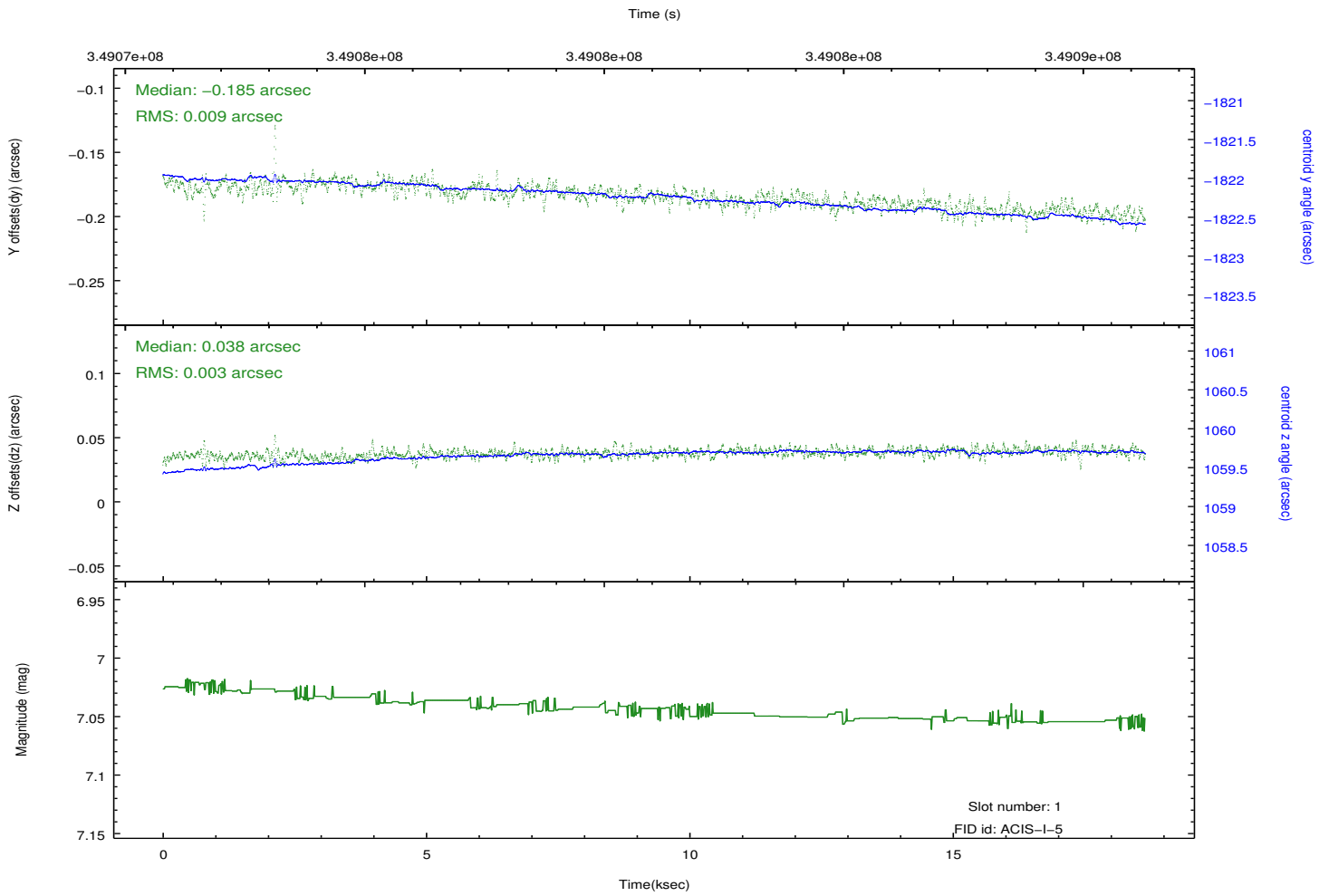
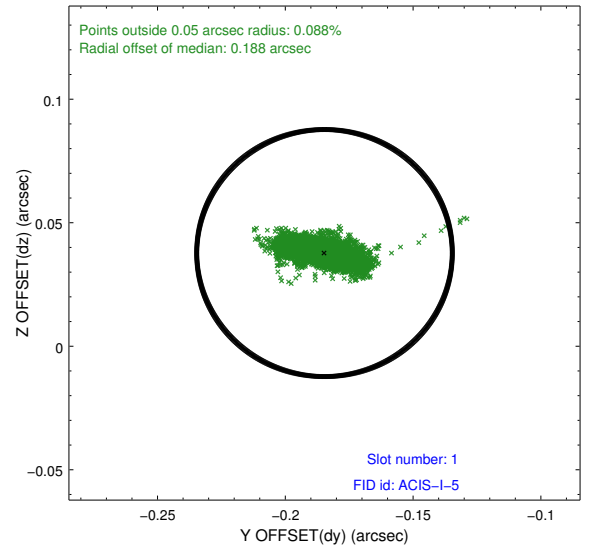
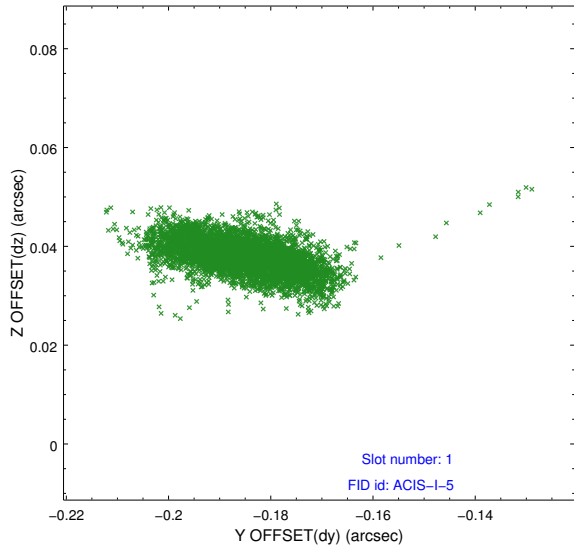


## 2.5 FID Slots

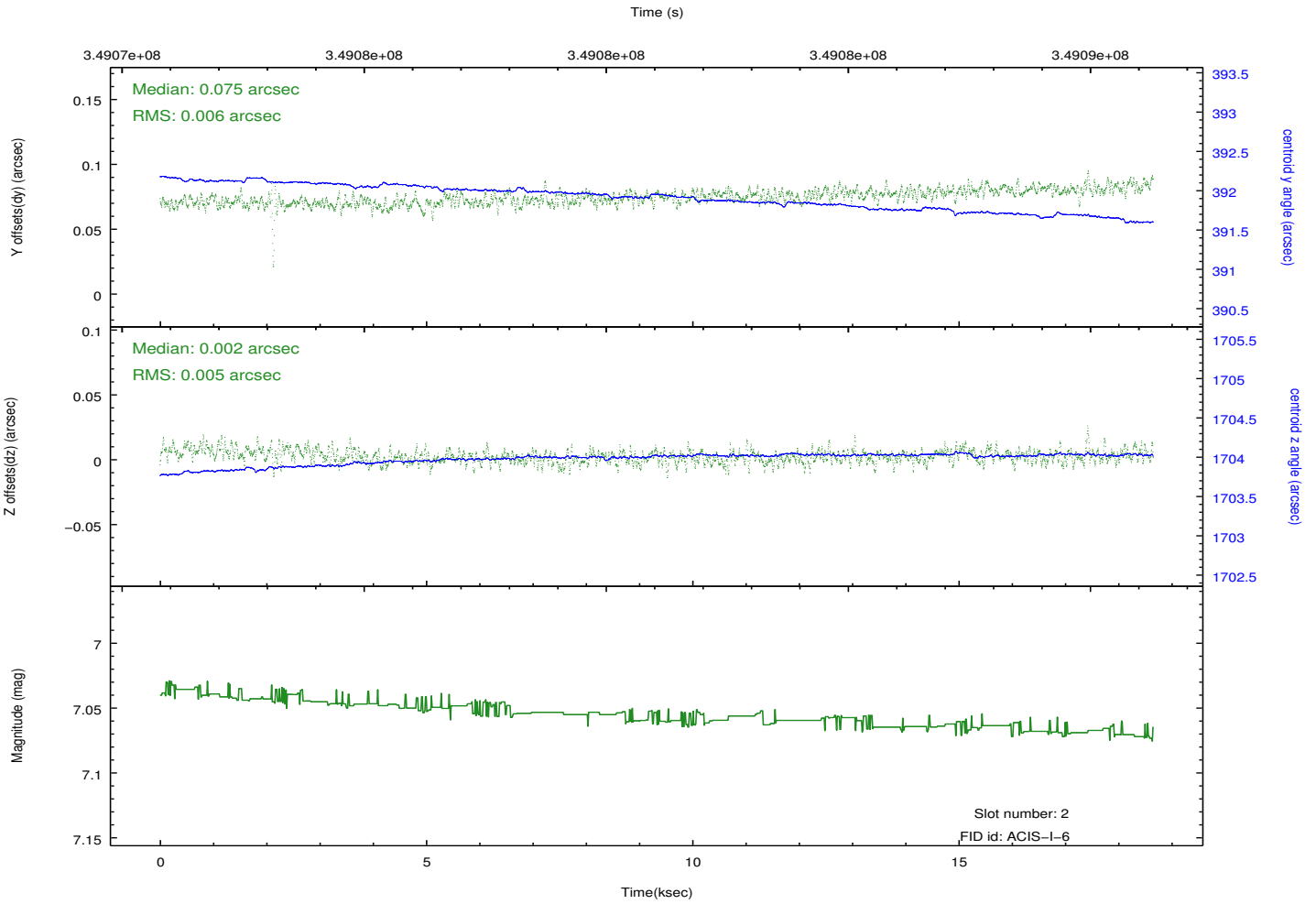
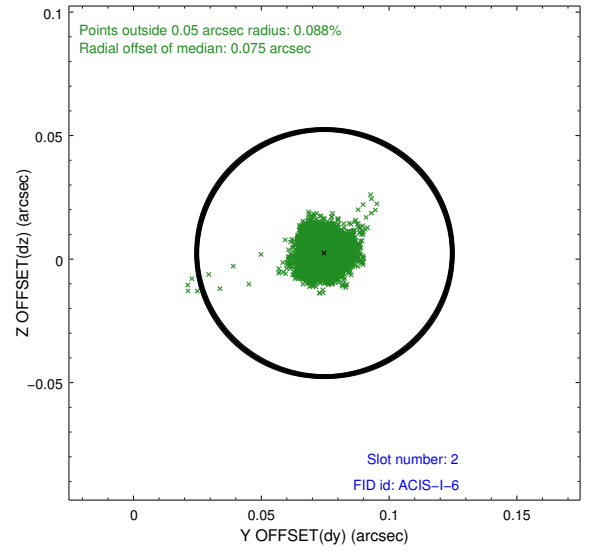
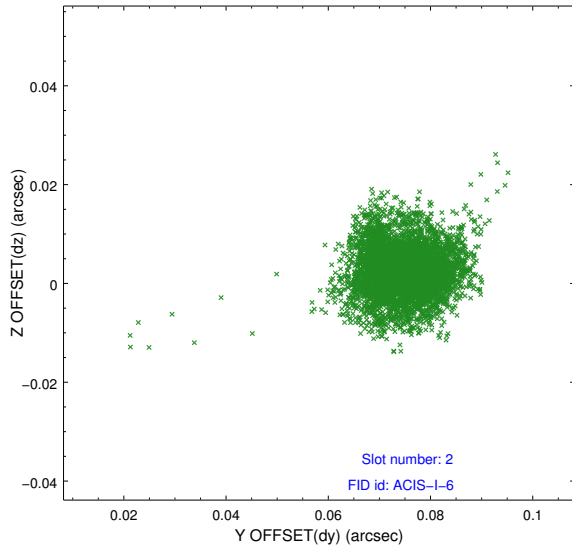
### 2.5.1 Slot 0



## 2.5.2 Slot 1



### 2.5.3 Slot 2



# A Summary

## A.1 Status

V&V Scientist	Jen Lauer
V&V Date (YYYY-MM-DD)	2012.06.04
V&V Edition	1
V&V Disposition and Status	OK
V&V Charge Time	18.6496001

## A.2 Comments

Monitor constraint met.