

V&V Reference Report

L2 ASCDS Version : 8.4.4

Observation 9936 - L2 Version 2
Chandra X-Ray Center

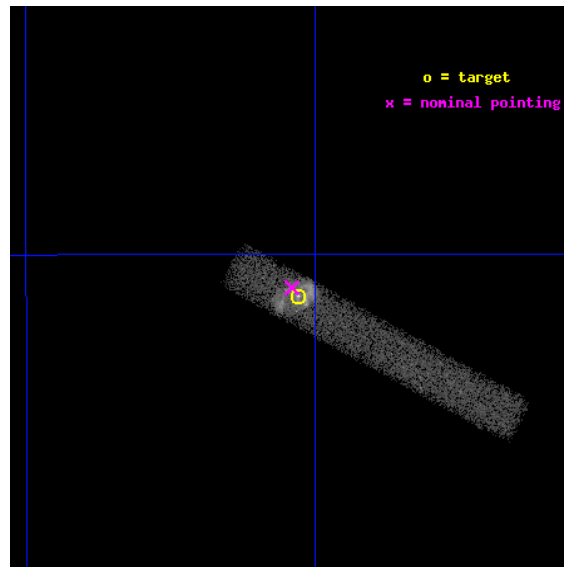
L2 Processing Date : May 30 2012

Contents

1	Front	2
2	OBI	3
2.1	OBI	3
2.1.1	Images	3
2.1.2	Bias	3
2.1.3	Parameters	4
2.1.4	Events	4
2.2	Compared Parameters	5
2.3	Aspect	6
2.4	Star Slots	9
2.4.1	Slot 3	9
2.4.2	Slot 4	10
2.4.3	Slot 5	11
2.4.4	Slot 6	12
2.4.5	Slot 7	13
2.5	FID Slots	14
2.5.1	Slot 0	14
2.5.2	Slot 1	15
2.5.3	Slot 2	16
A	Summary	17
A.1	Status	17
A.2	Comments	17

1 Front

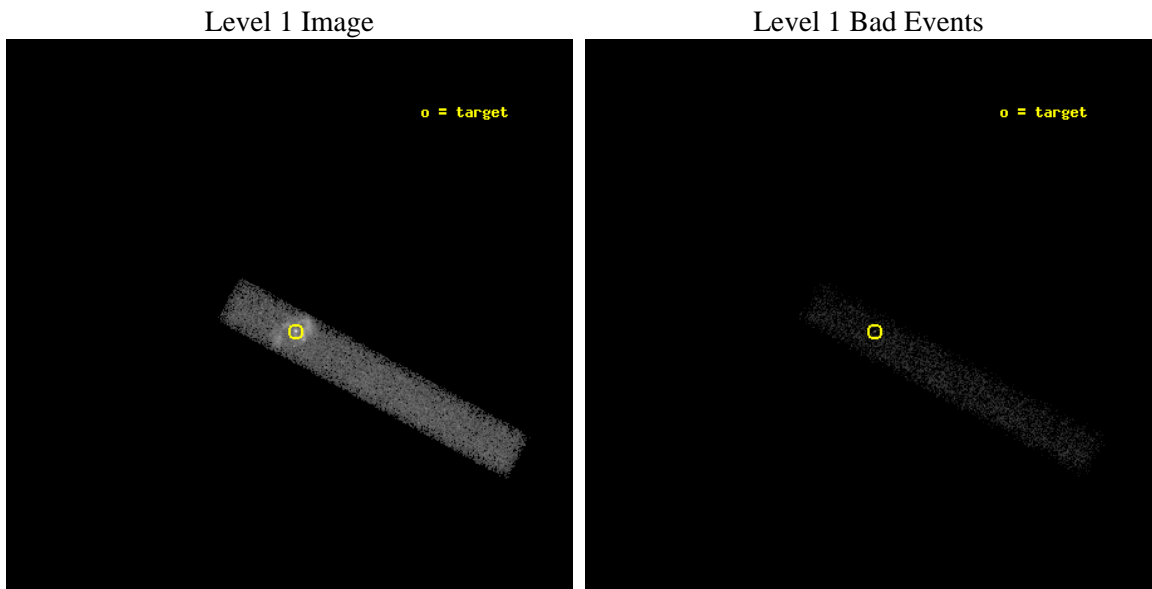
seq_num	200552	Sequence number
obs_id	9936	Observation id
title	X-ray Monitoring of Eta Car in 2009: Unveiling the Deep X-ray Minimum	Proposal title
observer	Dr. Kenji Hamaguchi	Principal investigator
object	Eta Carinae	Source name
dtycycle	0	
cycle	P	events from which exps? Prim/Second/Both
ra_targ	161.265	Observer's specified target RA [deg]
dec_targ	-59.6845	Observer's specified target Dec [deg]
ra_nom	161.27050496823	Nominal RA [deg]
dec_nom	-59.681047502687	Nominal Dec [deg]
roll_nom	28.434393234786	Nominal Roll [deg]
revision	2	Processing version of data
ontime	15008.627279878	Sum of GTIs [s]
livetime	13612.032722545	Livetime [s]
ontime7	15008.627279878	Sum of GTIs [s]
l2events	25482	Number of level 2 events



2 OBI

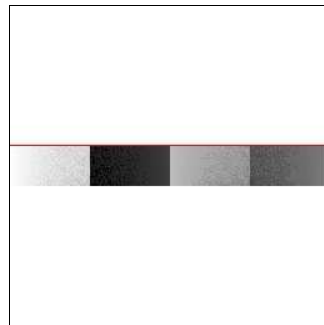
2.1 OBI

2.1.1 Images



2.1.2 Bias

Chip 7



2.1.3 Parameters

obi_num	0	Obi number	sched_exp_time	15000.000000	[s] Scheduled observation exposure time
ascdsver	8.4.4	Processing system revision	ontime	15008.627279878	Sum of GTIs [s]
caldbver	4.4.9	 	ontime7	15008.627279878	Sum of GTIs [s]
date	2012-05-30T06:08:55	Date and time of file creation	l1events	41563	Number of level 1 events
revision	2	Processing version of data			

2.1.4 Events

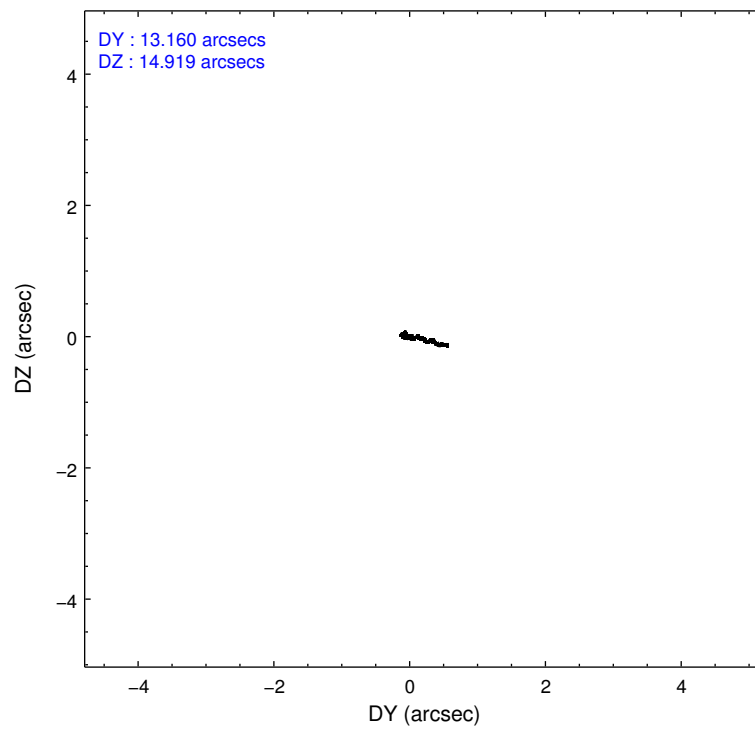
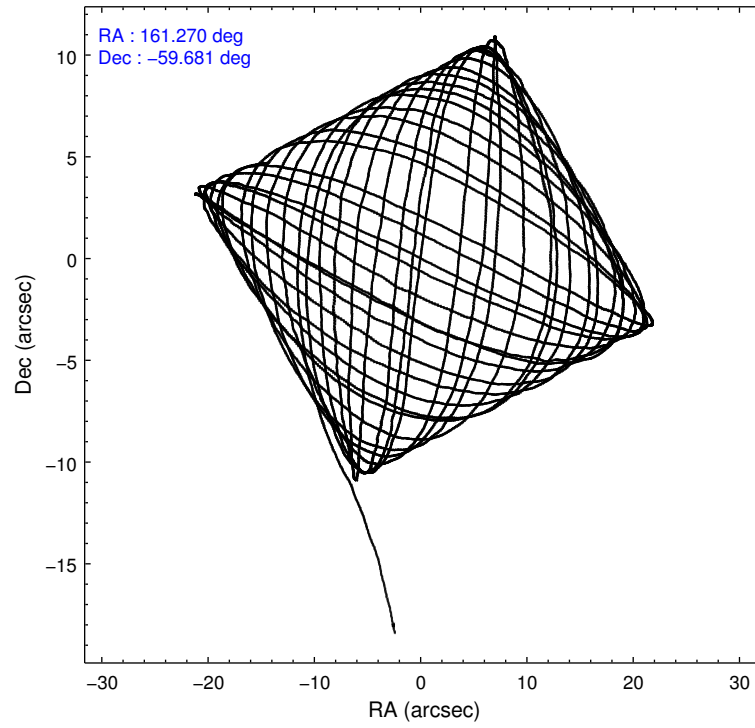
	ccd 7
level 1 events	41563
rejected events	15376
rejected %	36%

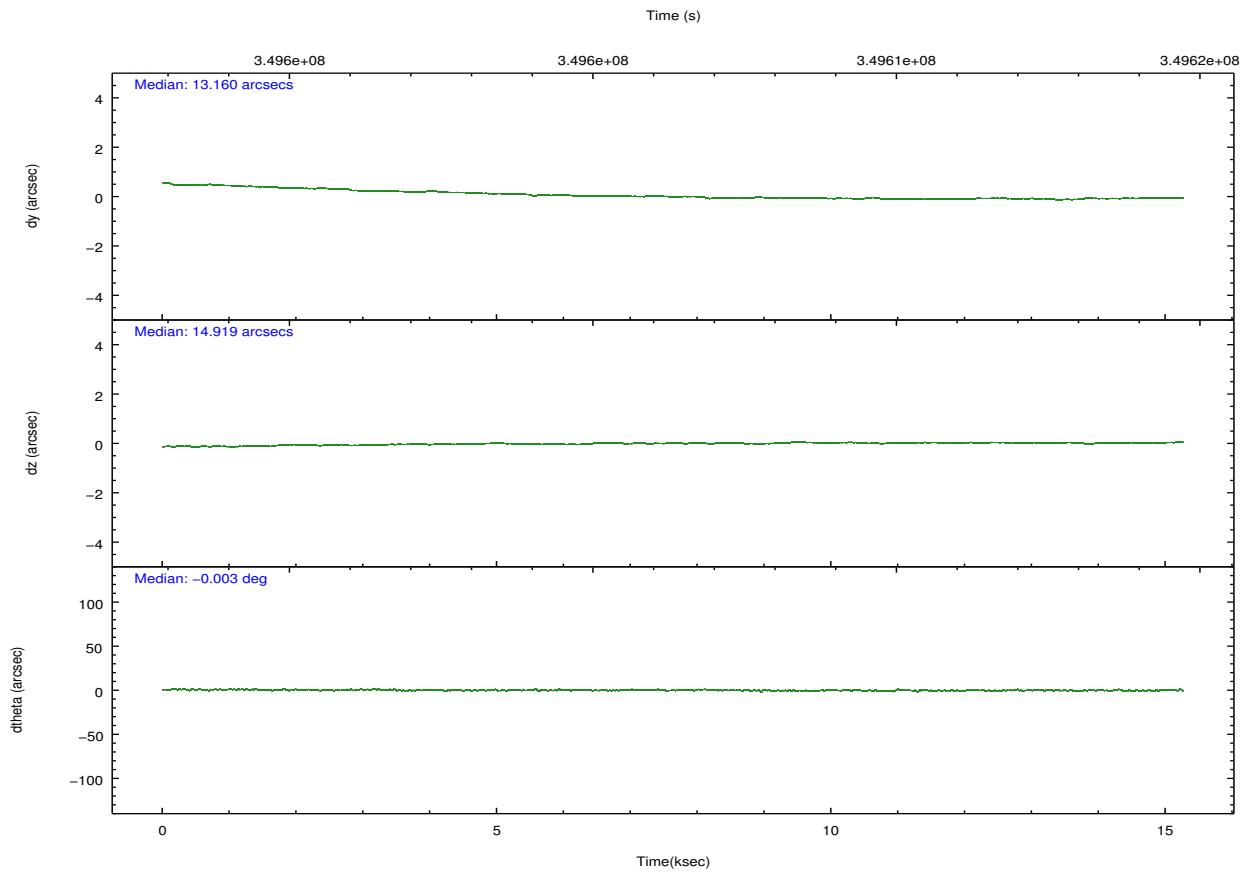
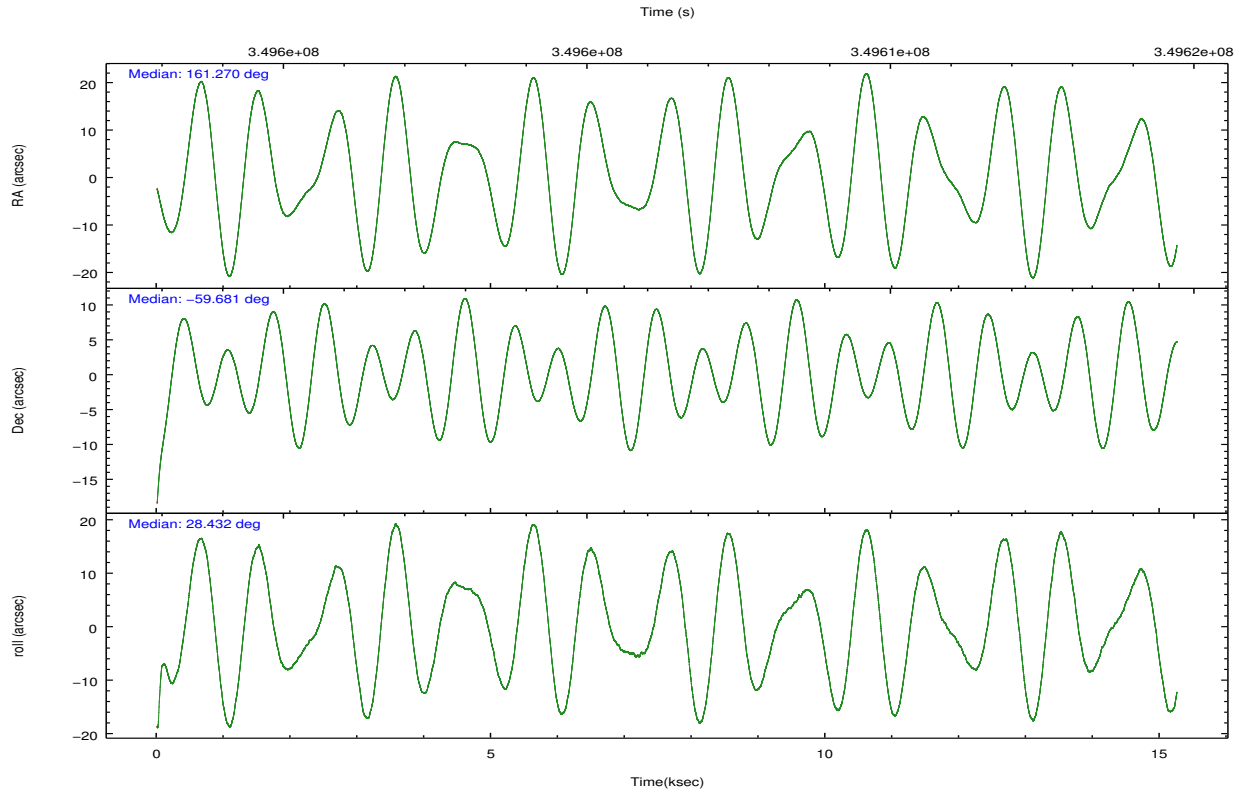
	ccd 7
grade 0 events	5212
	12%
grade 1 events	49
	0%
grade 2 events	5989
	14%
grade 3 events	3347
	8%
grade 4 events	3129
	7%
grade 5 events	2759
	6%
grade 6 events	8519
	20%
grade 7 events	12559
	30%

2.2 Compared Parameters

Parameter	Planned	Actual	Parameter	Planned	Actual
Instrument	ACIS	ACIS	Obspar format version number	7	7
Detector	ACIS-7	ACIS-7	Obspar file type	PREDICTED	ACTUAL
Grating	NONE	NONE	Obspar update status	NONE	UPDATED
Data mode	FAINT	FAINT	Number of optional ACIS chips dropped	0	0
Observation mode	POINTING	POINTING	On-chip summing requested	N	N
[deg] Pointing RA	161.242838	161.2705049682312	Subarray requested	CUSTOM	1/8
[deg] Pointing Dec	-59.704512	-59.68104750268716	Subarray start row	449	449
[deg] Pointing Roll	28.253897	28.43439323478632	Subarray row count	128	128
[s] Window start time (MET)	348019266.184000	348019266.184000	Alternating exposures requested	N	N
[s] Window stop time (MET)	350092866.184000	350092866.184000	[s] Primary exposure time	0.000000	0.4
[mm] SIM focus pos	-0.684267	-0.6828225247311905			
[mm] SIM defocus	0	0.001444936568705701			
[mm] SIM translation stage pos	-189.840023	-189.8383482136847			
[mm] SIM translation stage offset	-0.2925	-0.294174369323116			
[s] Observation start time (MET)	349598956.184000	349597921.13104			
Observation start date	2009-01-29T06:48:10	2009-01-29T06:32:01			
[s] Observation end time (MET)	349613956.184000	349614675.26937			
Observation end date	2009-01-29T10:58:10	2009-01-29T11:11:15			
Read mode	TIMED	TIMED			

2.3 Aspect



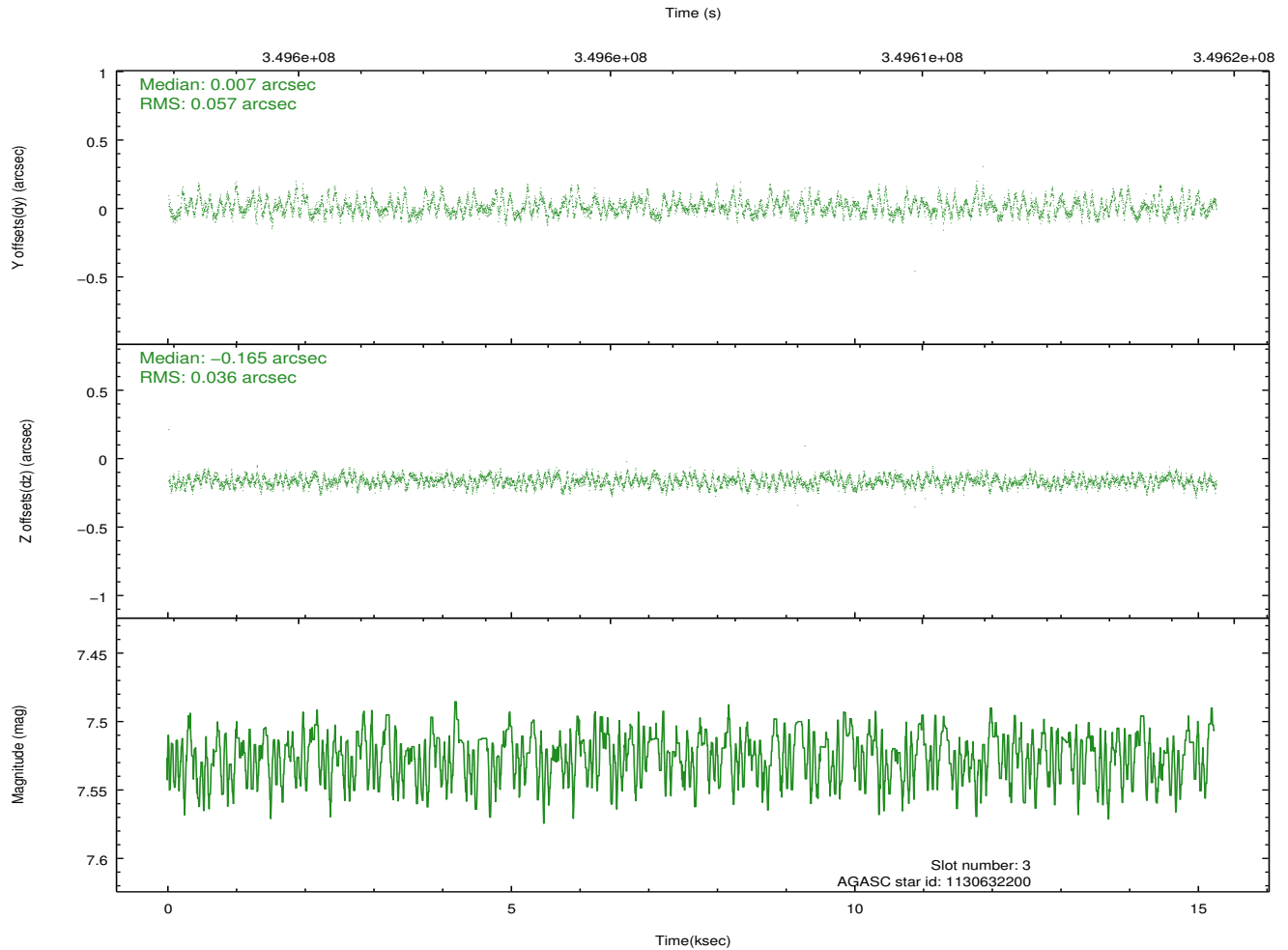
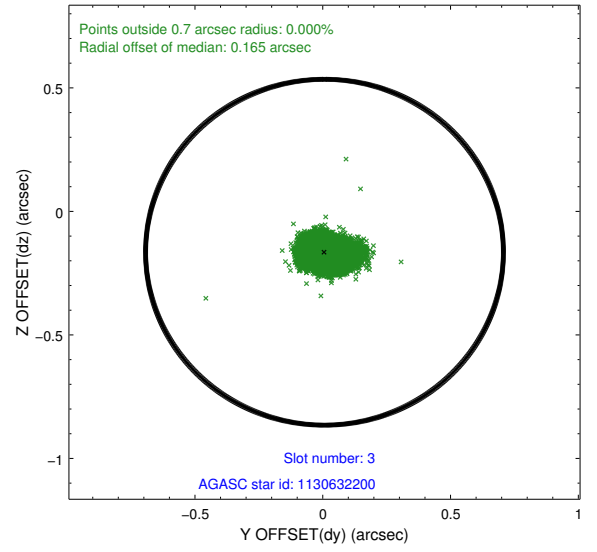
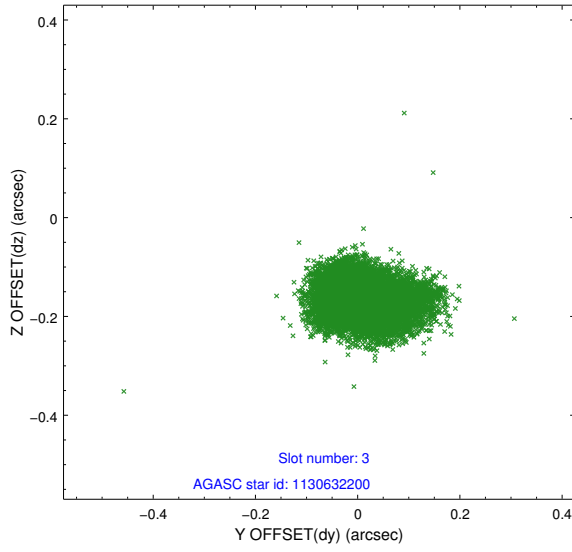


Slot Statistics

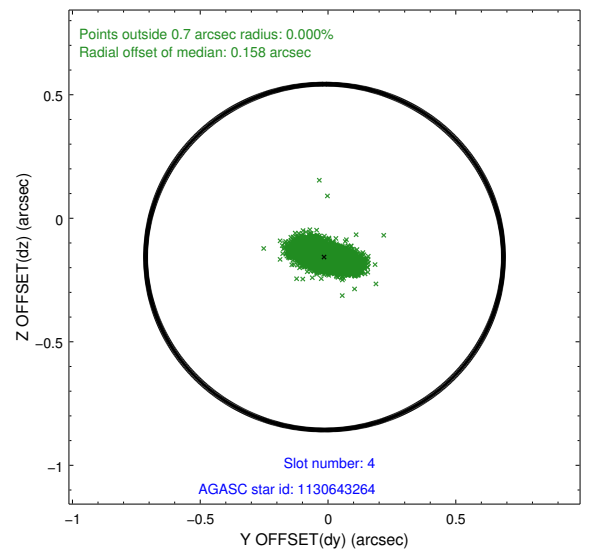
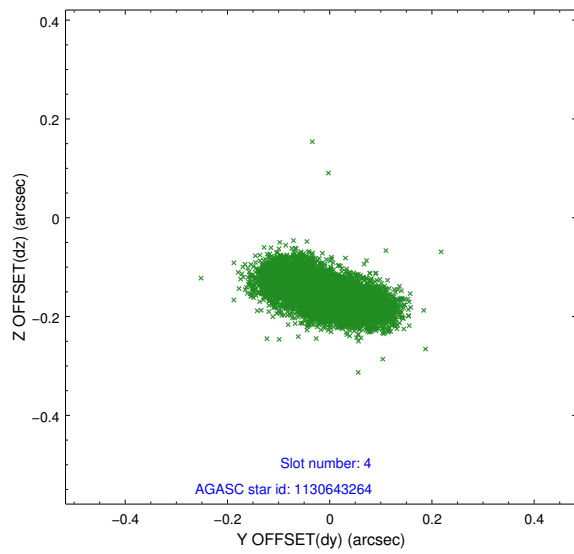
slot	status	id	mag	n_pts	med_dy	med_dz	dr1	dr2	ra	dec	mean_y	mean_z
0	FID	ACIS-S-1	7.00	3721	0.069	-0.073	0.007	0.012	0.000000	0.000000	929.90	-1738.23
1	FID	ACIS-S-2	6.92	3720	-0.145	-0.011	0.010	0.020	0.000000	0.000000	-766.06	-1742.96
2	FID	ACIS-S-4	7.00	3721	0.051	0.091	0.009	0.017	0.000000	0.000000	2147.06	165.73
3	GUIDE	1130632200	7.52	7441	0.007	-0.165	0.071	0.117	161.433843	-59.407820	814.04	774.81
4	GUIDE	1130643264	6.65	7441	-0.014	-0.157	0.076	0.124	160.322990	-59.676912	-1430.60	868.83
5	GUIDE	1130640672	8.29	7437	0.049	0.096	0.056	0.090	162.096044	-59.540805	1646.04	-226.27
6	GUIDE	1130646160	8.64	7435	-0.037	0.048	0.067	0.108	162.161730	-59.561264	1715.43	-349.00
7	GUIDE	1174012960	7.15	7435	-0.013	0.178	0.049	0.077	160.855674	-60.332270	-1677.79	-1665.64

2.4 Star Slots

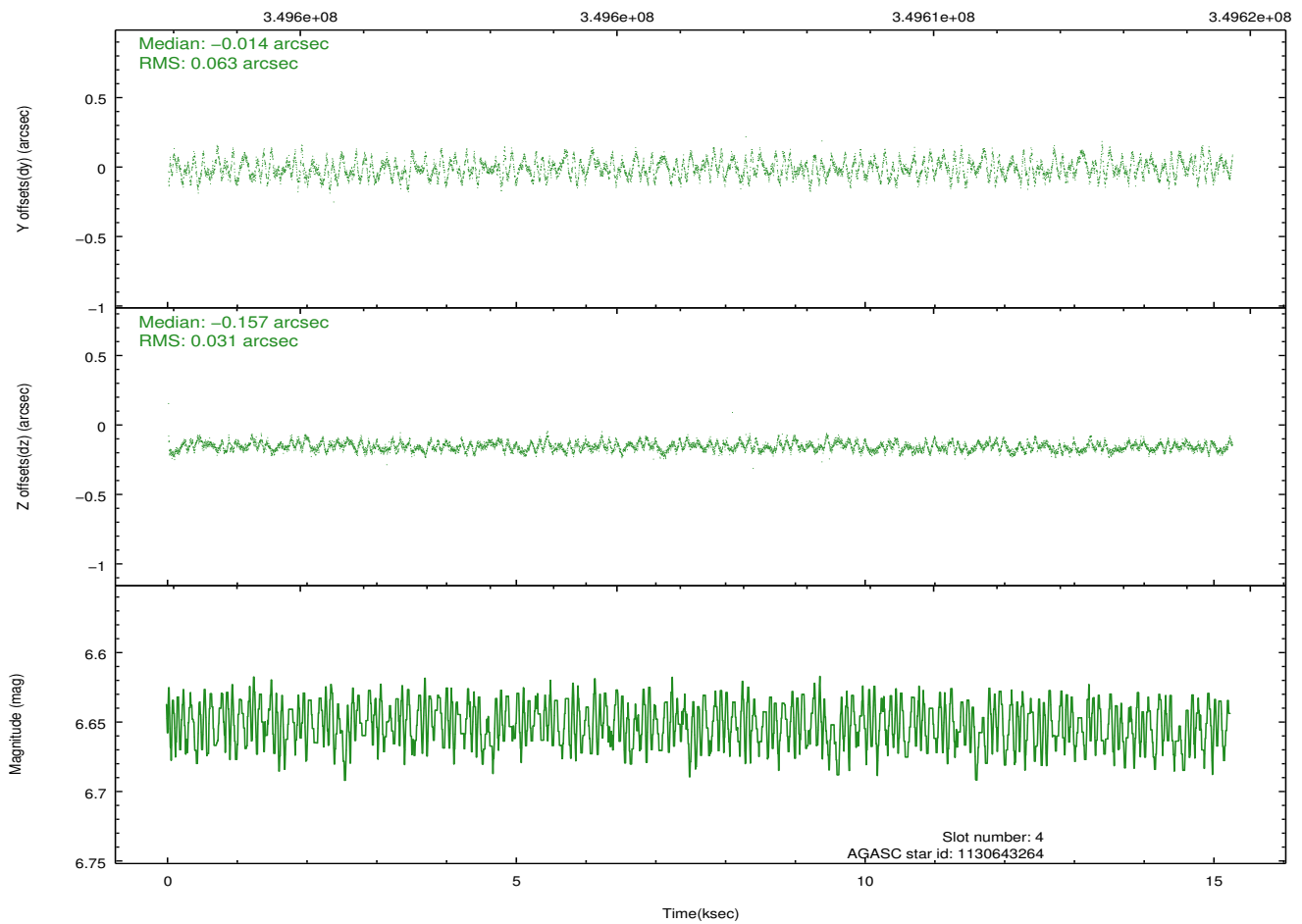
2.4.1 Slot 3



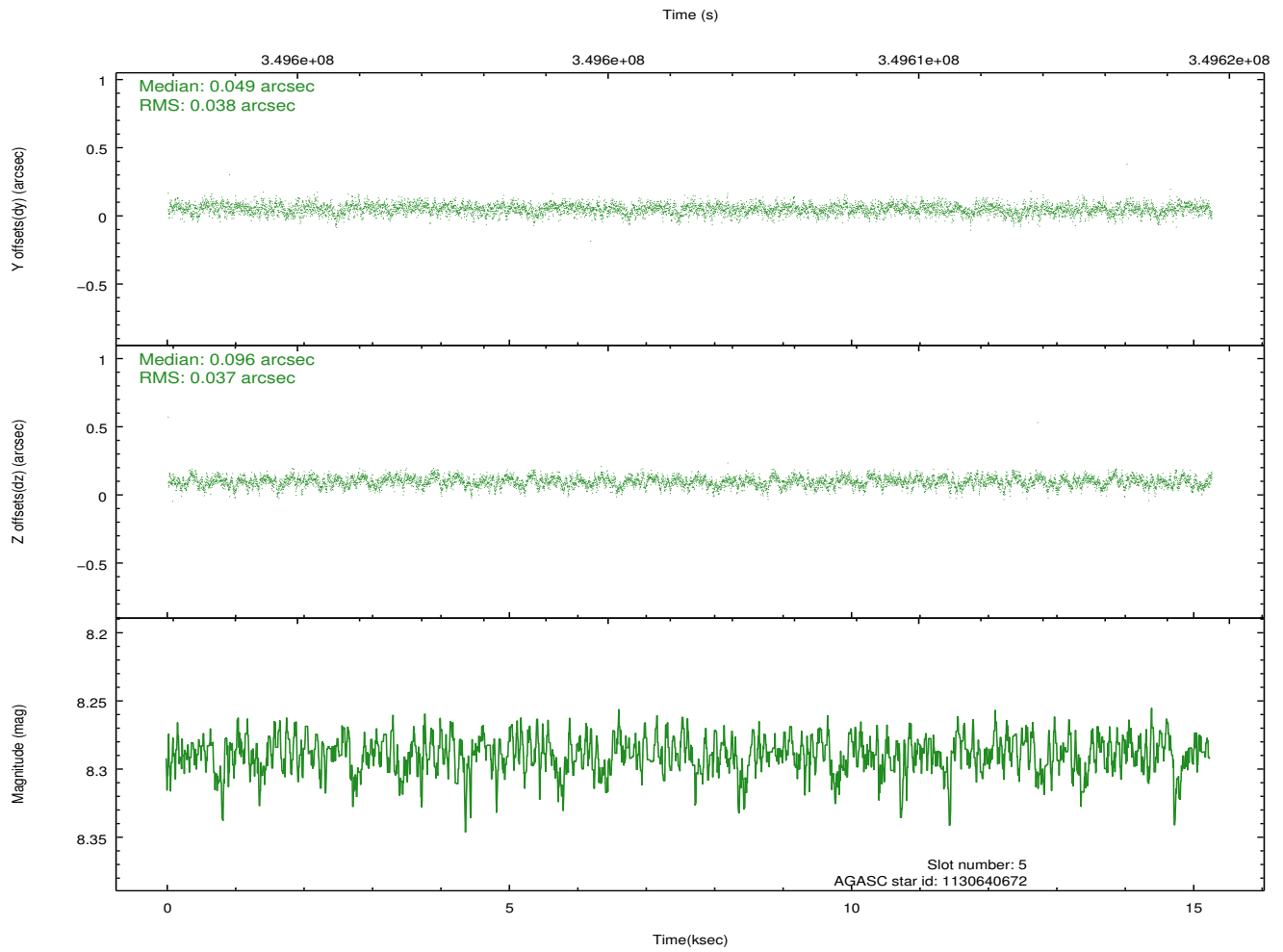
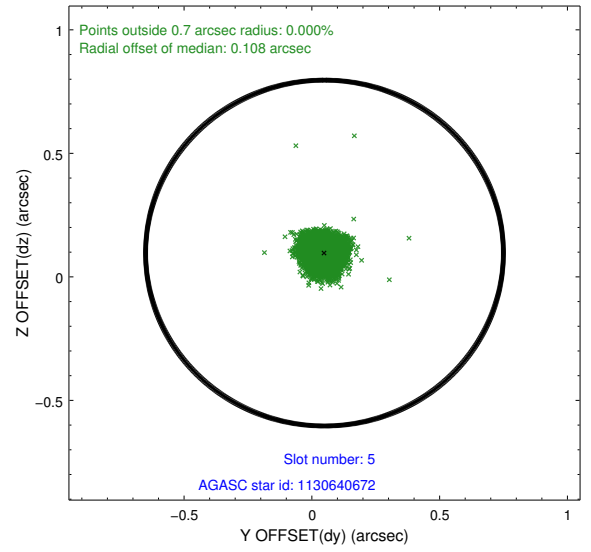
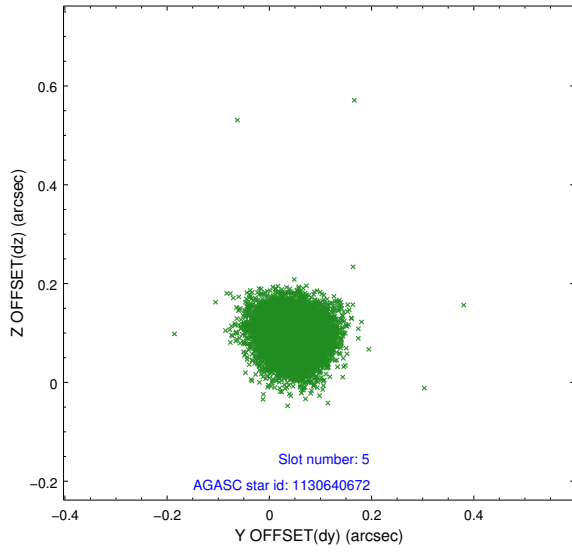
2.4.2 Slot 4



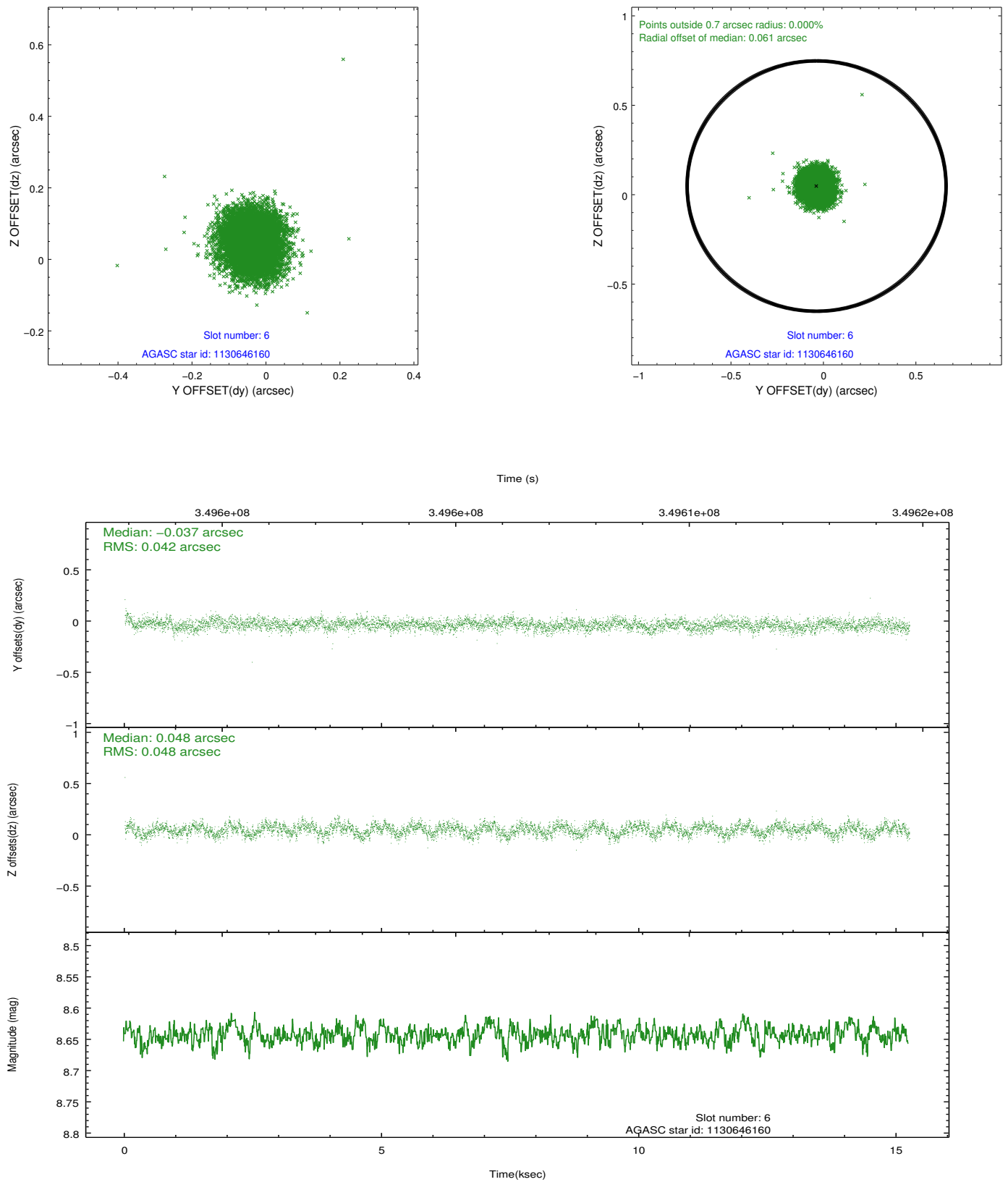
Time (s)



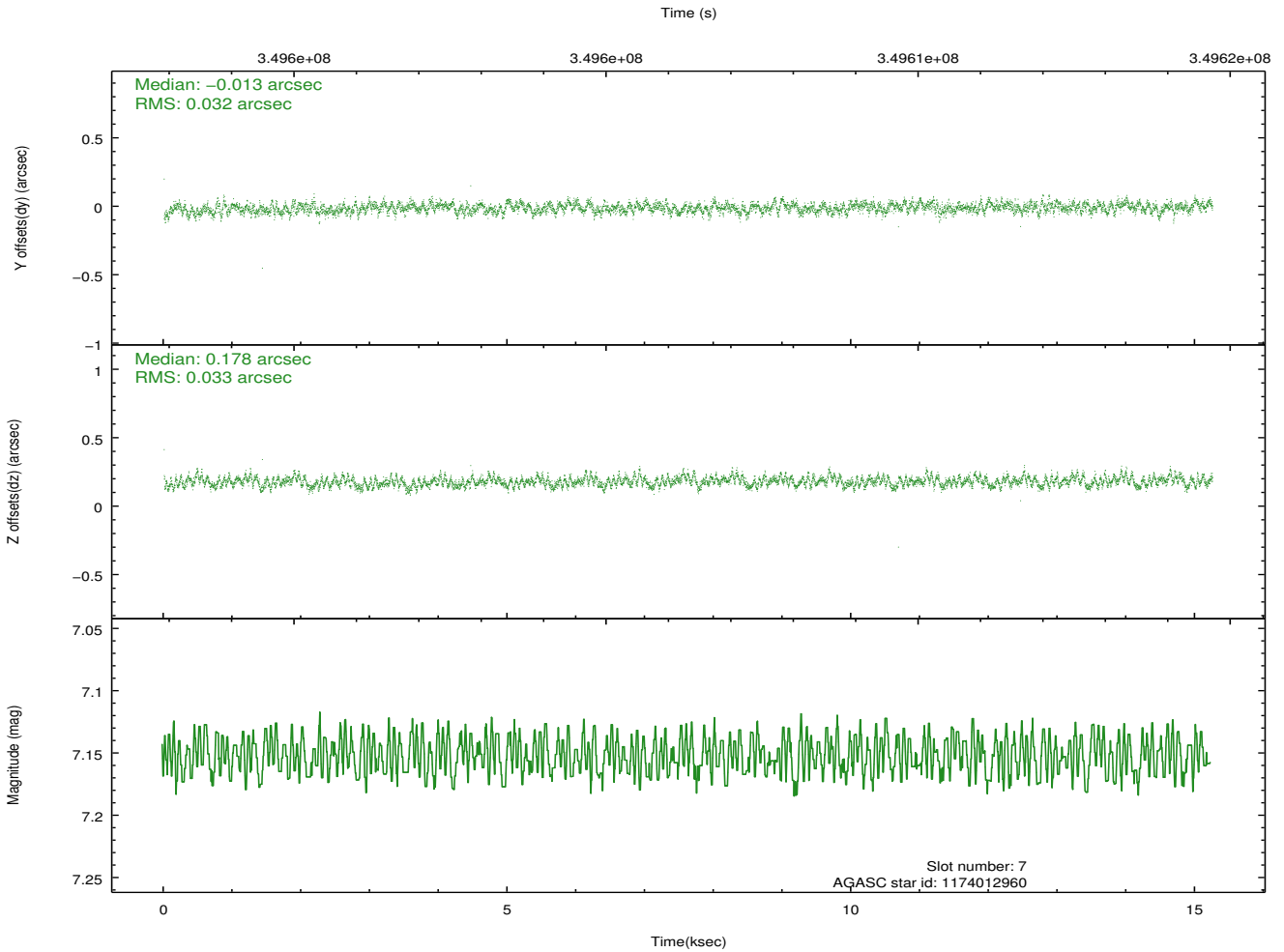
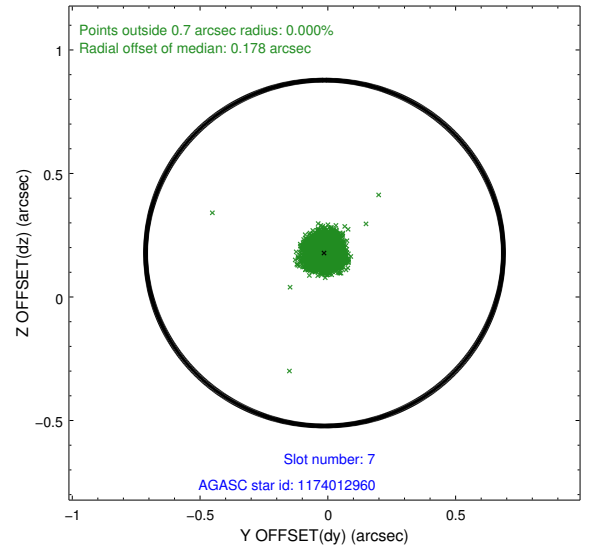
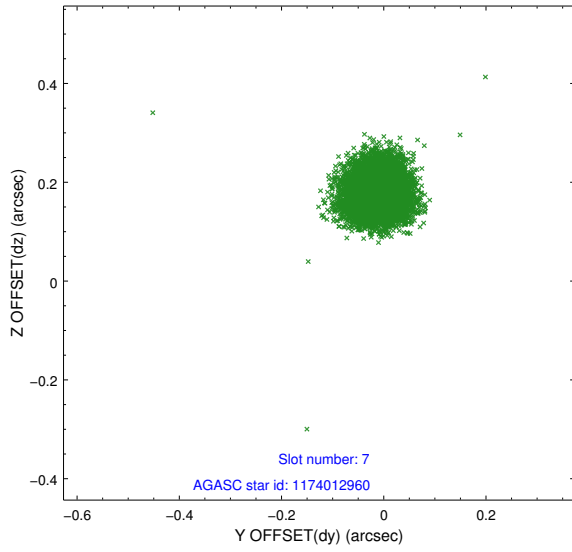
2.4.3 Slot 5



2.4.4 Slot 6

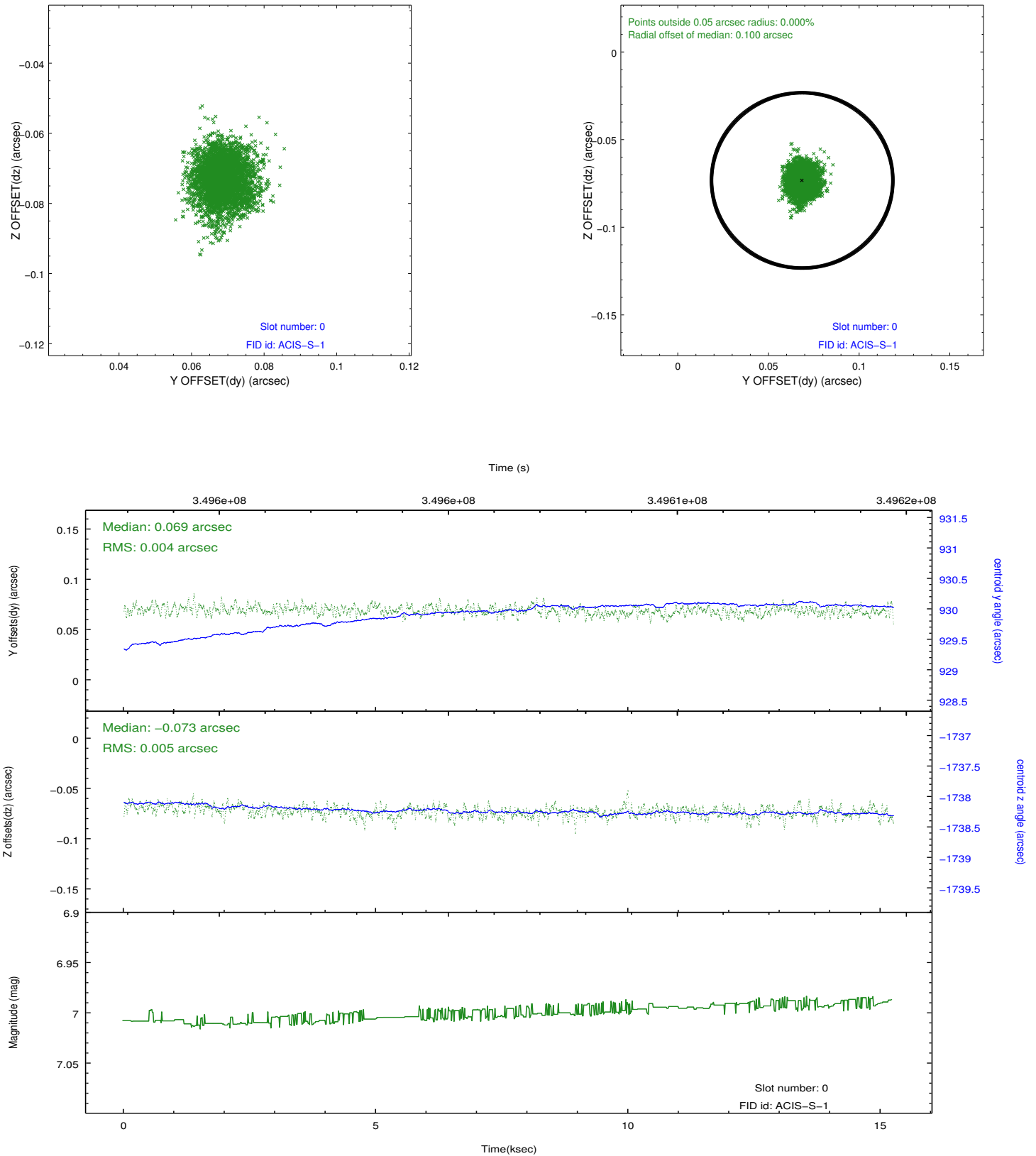


2.4.5 Slot 7

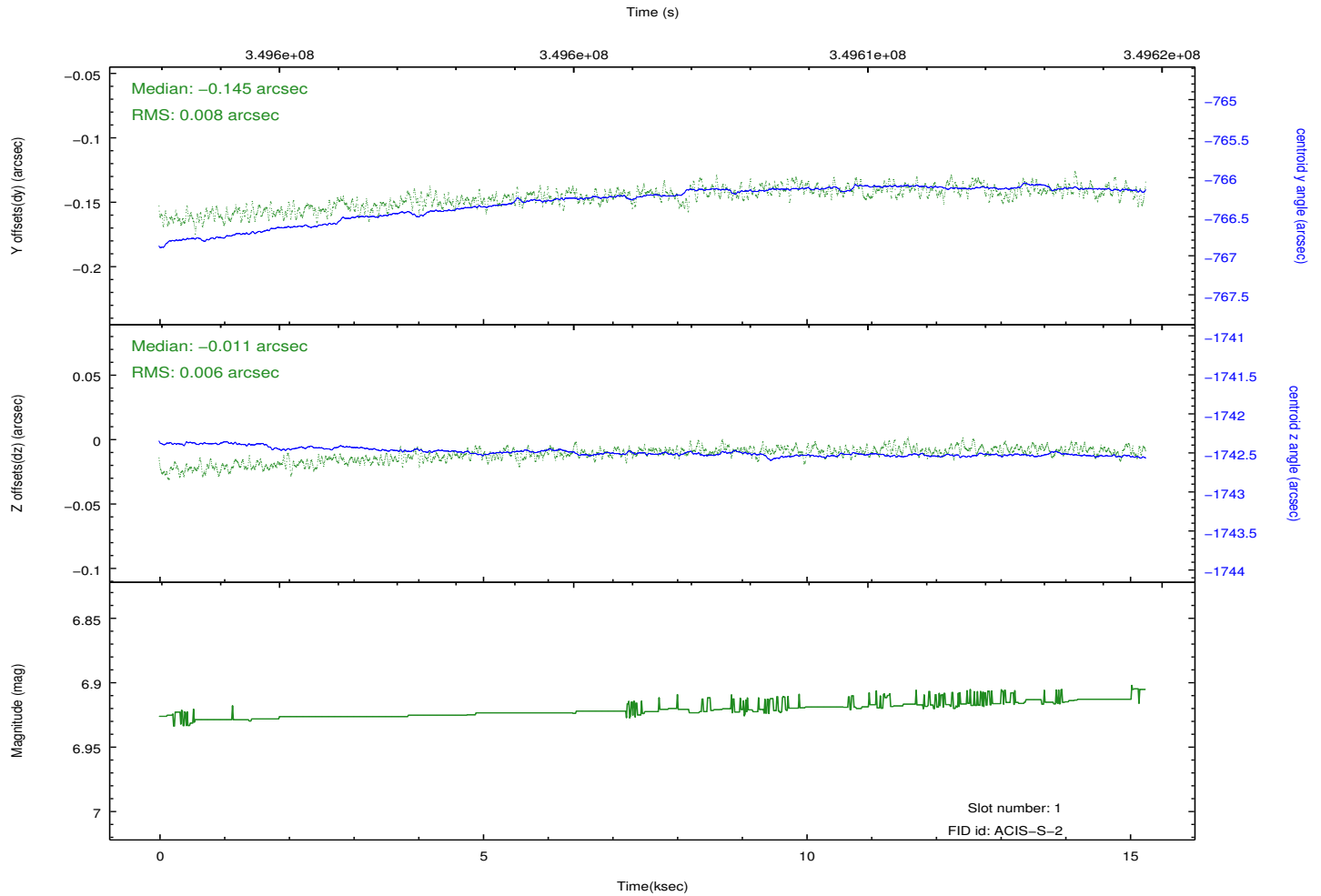
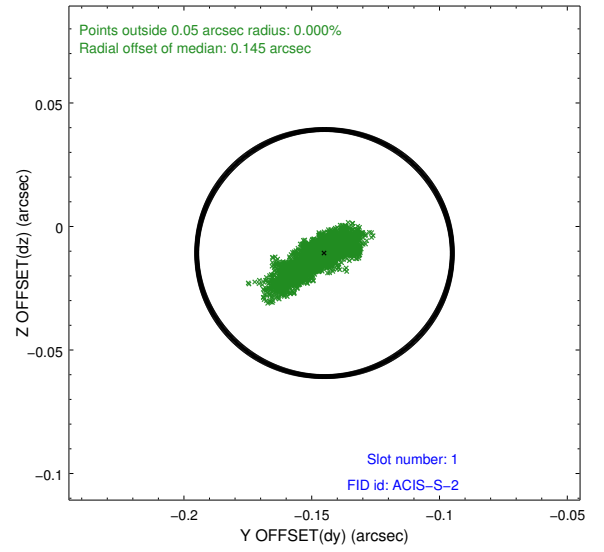
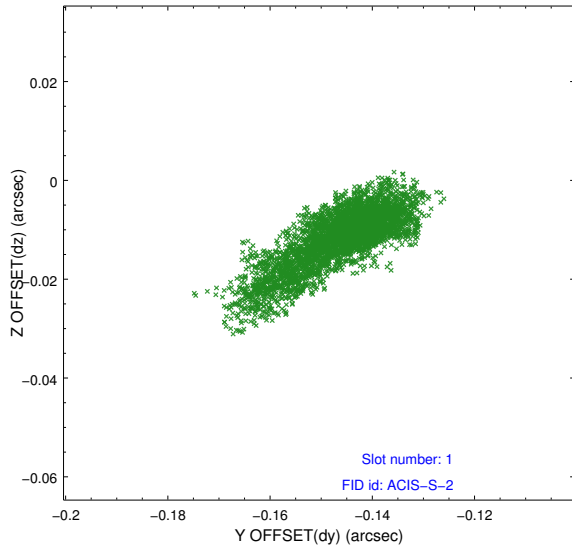


2.5 FID Slots

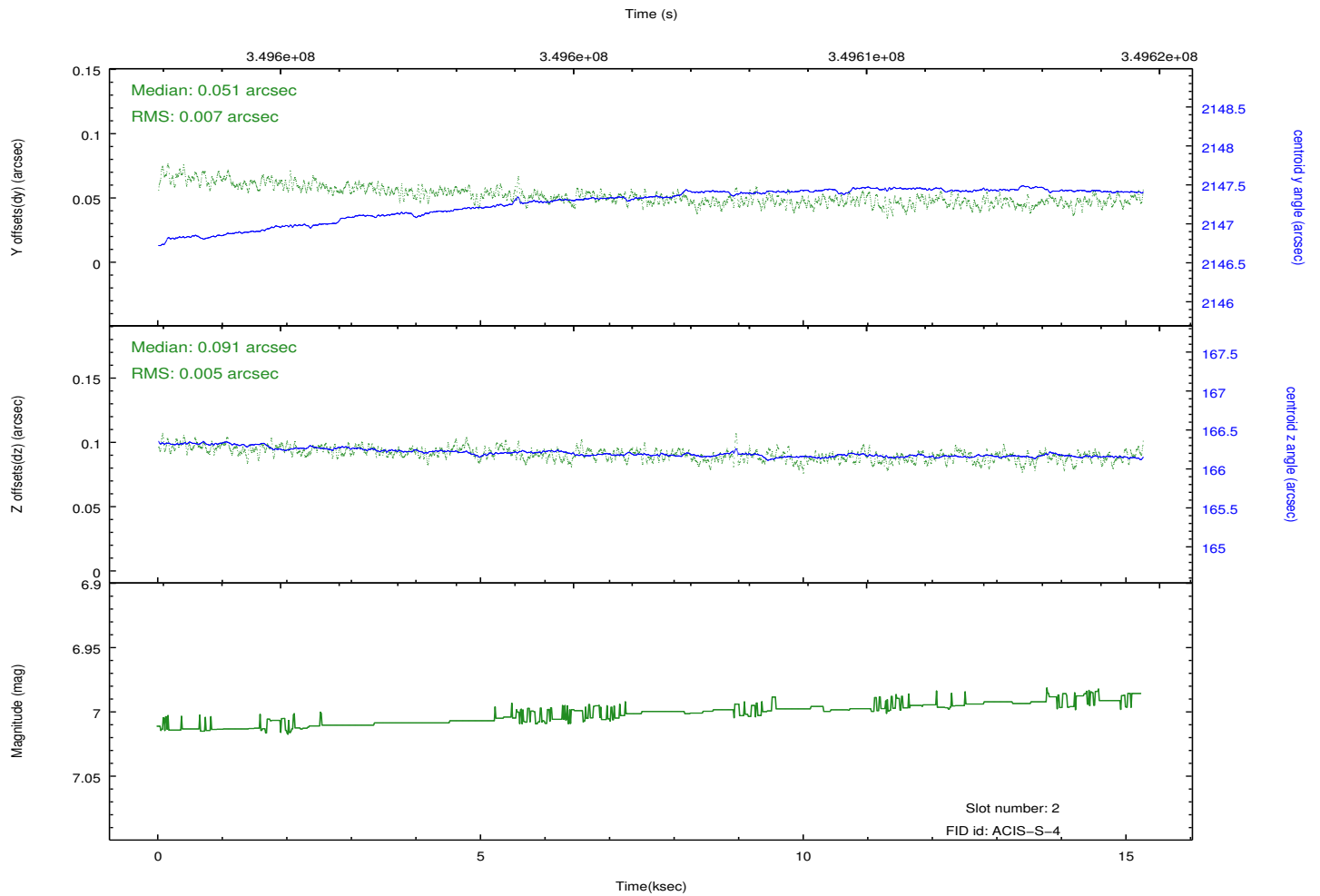
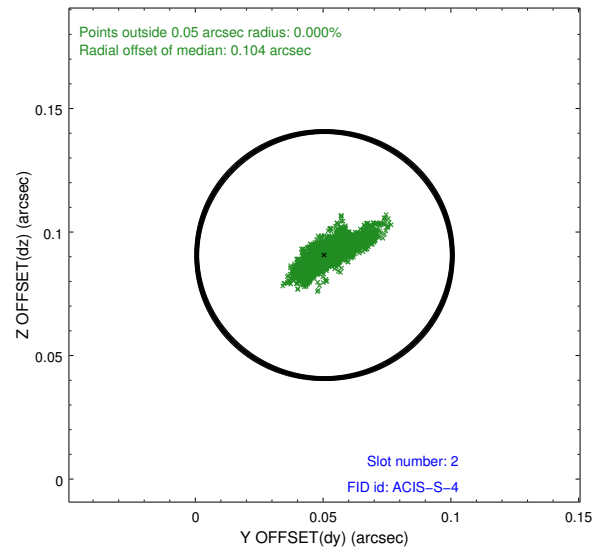
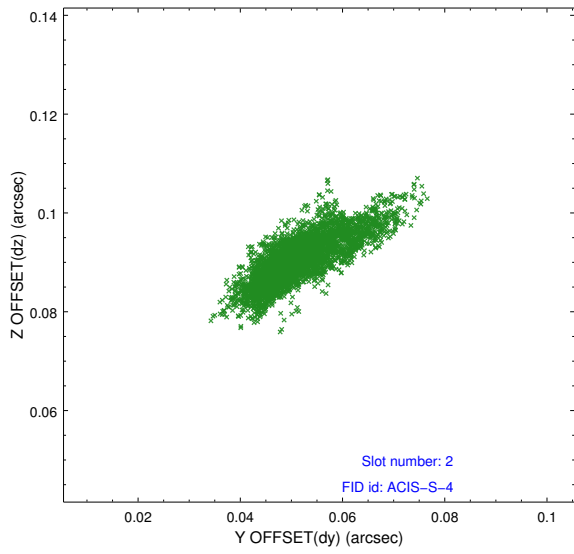
2.5.1 Slot 0



2.5.2 Slot 1



2.5.3 Slot 2



A Summary

A.1 Status

V&V Scientist	Jen Lauer
V&V Date (YYYY-MM-DD)	2012.06.04
V&V Edition	1
V&V Disposition and Status	OK
V&V Charge Time	15.0087991

A.2 Comments

Joint Proposal: XMM. Window constraint met.