

V&V Reference Report

L2 ASCDS Version : 8.4.5

Observation 9956 - L2 Version 2
Chandra X-Ray Center

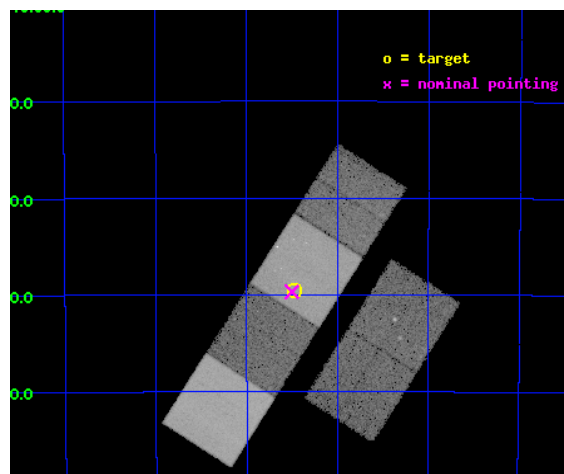
L2 Processing Date : Jun 9 2012

Contents

1	Front	2
2	OBI	3
2.1	OBI	3
2.1.1	Images	3
2.1.2	Bias	3
2.1.3	Parameters	4
2.1.4	Events	4
2.2	Compared Parameters	5
2.3	Aspect	6
2.4	Star Slots	9
2.4.1	Slot 3	9
2.4.2	Slot 4	10
2.4.3	Slot 5	11
2.4.4	Slot 6	12
2.4.5	Slot 7	13
2.5	FID Slots	14
2.5.1	Slot 0	14
2.5.2	Slot 1	15
2.5.3	Slot 2	16
A	Summary	17
A.1	Status	17
A.2	Comments	17

1 Front

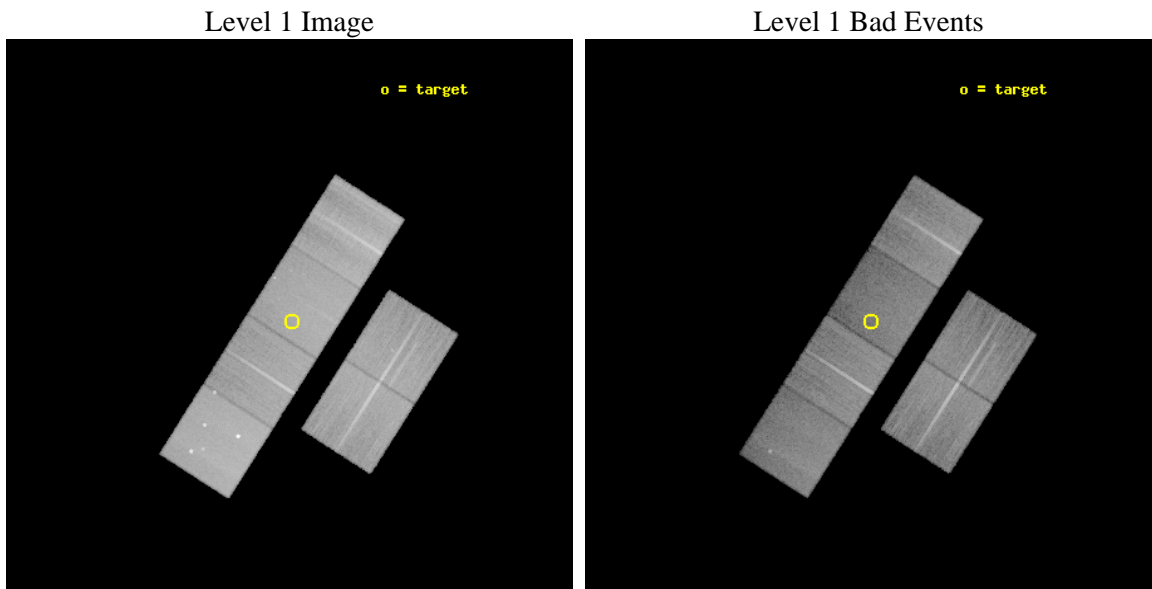
seq_num	300243	Sequence number
obs_id	9956	Observation id
title	Understanding the Current Dynamical States of Globular Clusters	Pr
observer	Prof. David Pooley	Principal investigator
object	NGC 5946	Source name
dtcycle	0	
cycle	P	events from which exps? Prim/Second/Both
ra_targ	233.86875	Observer's specified target RA [deg]
dec_targ	-50.659444	Observer's specified target Dec [deg]
ra_nom	233.87567861682	Nominal RA [deg]
dec_nom	-50.661563556663	Nominal Dec [deg]
roll_nom	302.49436330069	Nominal Roll [deg]
revision	2	Processing version of data
ontime	25039.999906778	Sum of GTIs [s]
livetime	24722.928350681	Livetime [s]
ontime2	25036.758906424	Sum of GTIs [s]
ontime3	25039.999906778	Sum of GTIs [s]
ontime5	25039.999906778	Sum of GTIs [s]
ontime6	25039.999906778	Sum of GTIs [s]
ontime7	25039.999906778	Sum of GTIs [s]
ontime8	25036.758906424	Sum of GTIs [s]
l2events	342140	Number of level 2 events



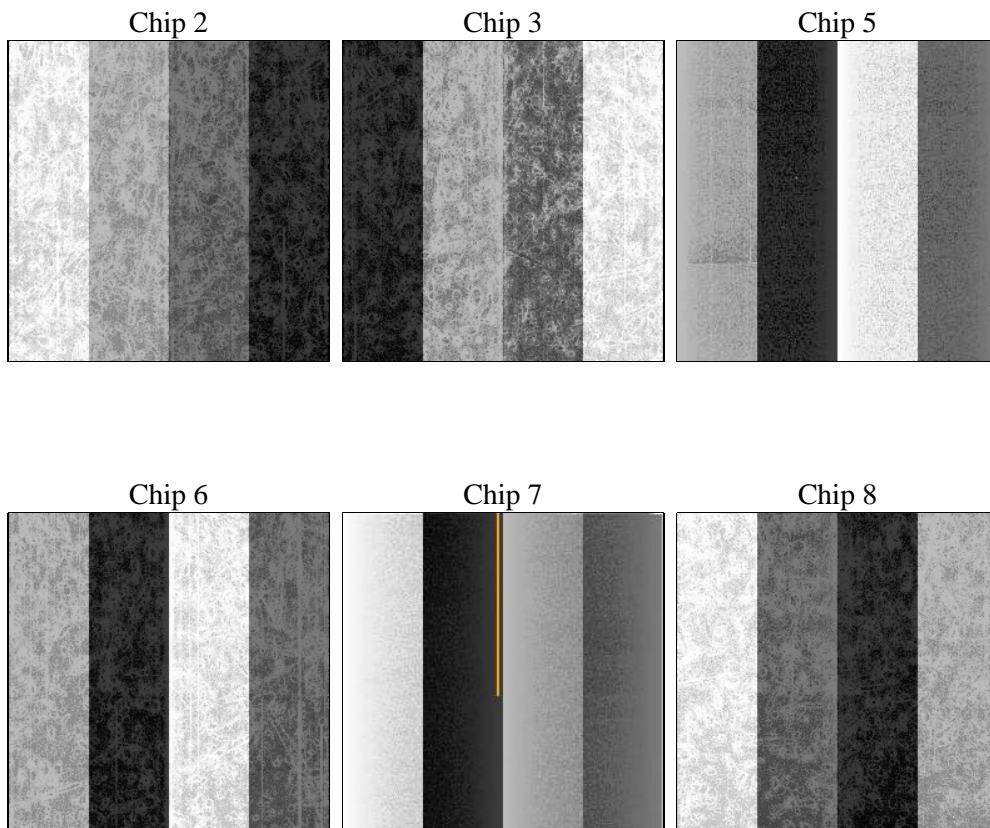
2 OBI

2.1 OBI

2.1.1 Images



2.1.2 Bias



2.1.3 Parameters

obi_num	0	Obi number	sched_exp_time	25000.000000	[s] Scheduled observation exposure time
ascdsver	8.4.5	Processing system revision	ontime	25039.999906778	Sum of GTIs [s]
caldbver	4.4.10	 	ontime2	25036.758906424	Sum of GTIs [s]
date	2012-06-09T08:06:58	Date and time of file creation	ontime3	25039.999906778	Sum of GTIs [s]
revision	2	Processing version of data	ontime5	25039.999906778	Sum of GTIs [s]
			ontime6	25039.999906778	Sum of GTIs [s]
			ontime7	25039.999906778	Sum of GTIs [s]
			ontime8	25036.758906424	Sum of GTIs [s]
			l1events	1528802	Number of level 1 events

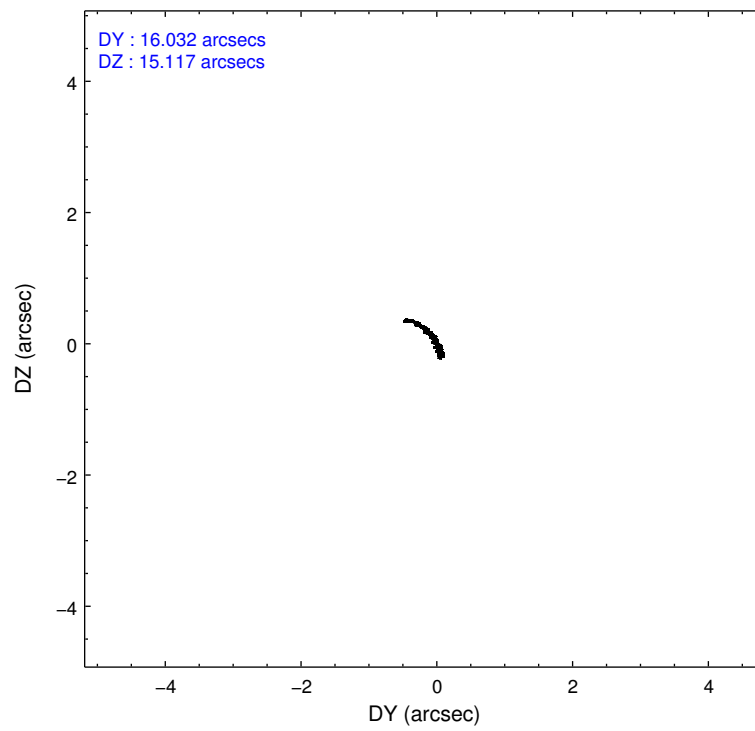
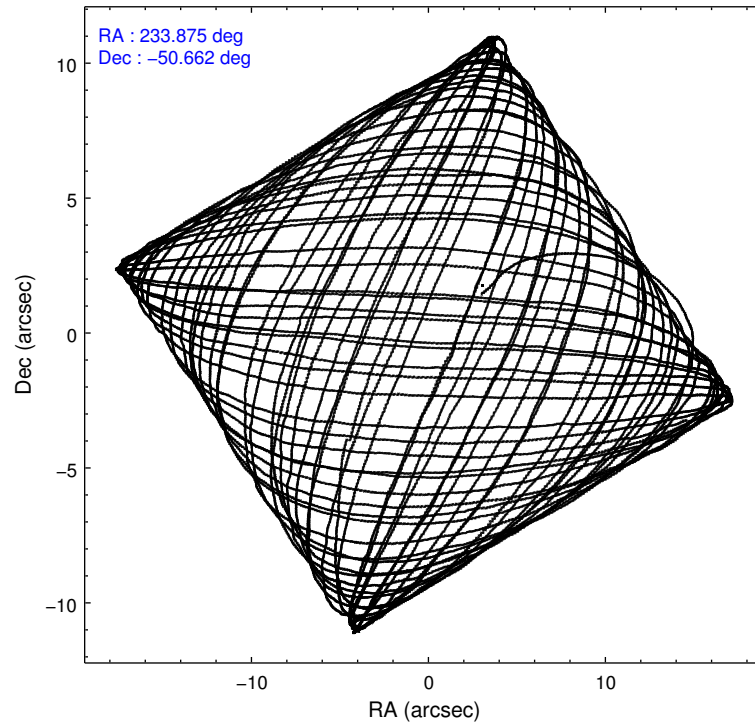
2.1.4 Events

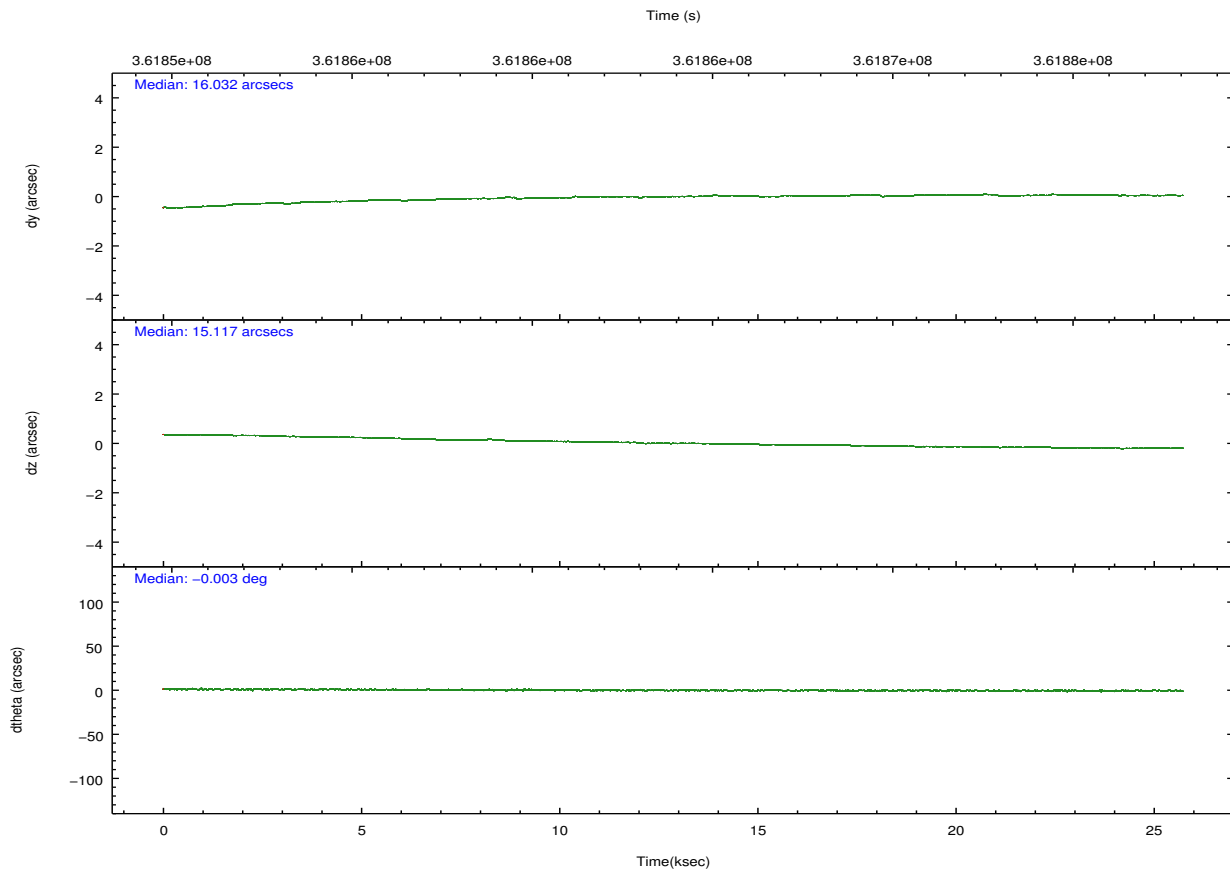
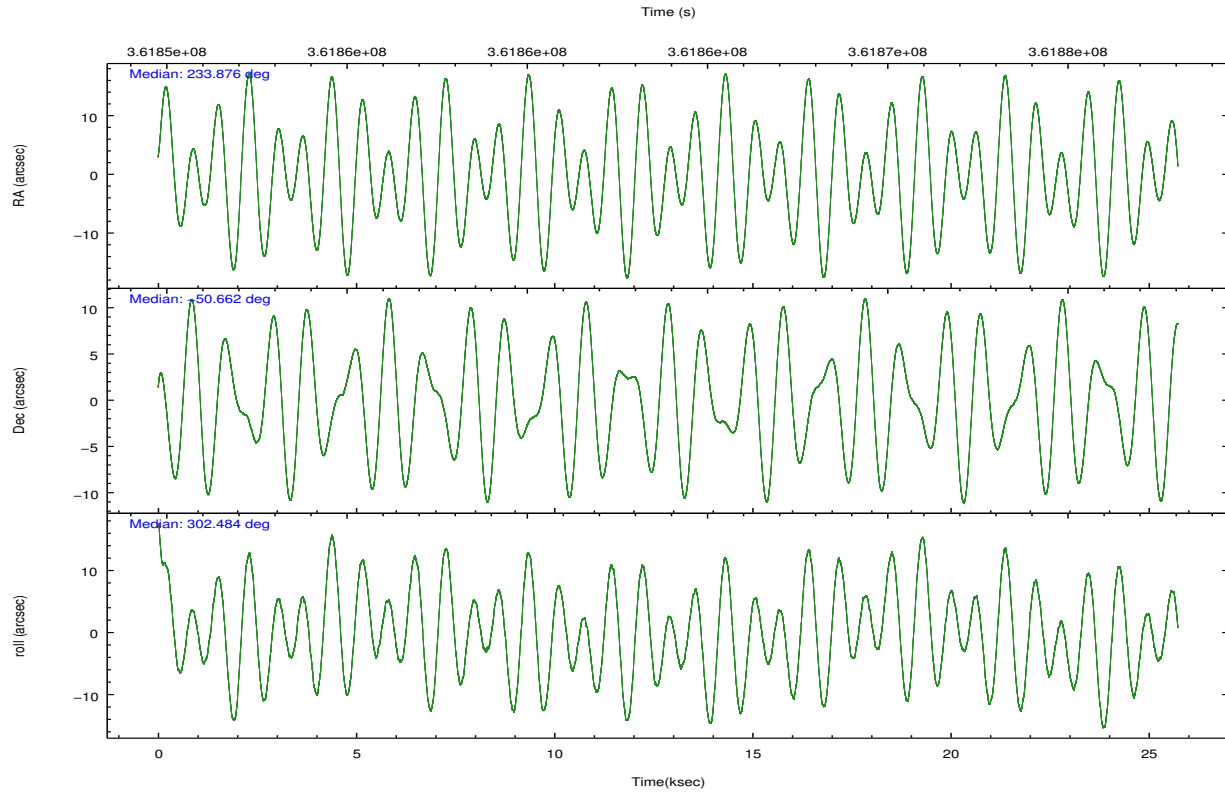
	ccd 2	ccd 3	ccd 5	ccd 6	ccd 7	ccd 8		ccd 2	ccd 3	ccd 5	ccd 6	ccd 7	ccd 8
level 1 events	235894	214413	319183	220840	254101	284371	grade 0 events	8095	8122	21262	8316	11162	20636
rejected events	213454	192745	156526	197426	137029	212139		3%	3%	6%	3%	4%	7%
rejected %	90%	89%	49%	89%	53%	74%	grade 1 events	128	131	631	121	361	231
								0%	0%	0%	0%	0%	0%
							grade 2 events	5529	4672	47942	5168	24125	16953
								2%	2%	15%	2%	9%	5%
							grade 3 events	2321	2322	6419	2512	10634	7675
								0%	1%	2%	1%	4%	2%
							grade 4 events	2412	2303	6175	2366	10676	6893
								1%	1%	1%	1%	4%	2%
							grade 5 events	7638	9072	24911	9105	26492	13280
								3%	4%	7%	4%	10%	4%
							grade 6 events	4089	4255	80902	5062	60500	20084
								1%	1%	25%	2%	23%	7%
							grade 7 events	205682	183536	130941	188190	110151	198619
								87%	85%	41%	85%	43%	69%

2.2 Compared Parameters

Parameter	Planned	Actual	Parameter	Planned	Actual
Instrument	ACIS	ACIS	Obspar format version number	7	7
Detector	ACIS-235678	ACIS-235678	Obspar file type	PREDICTED	ACTUAL
Grating	NONE	NONE	Obspar update status	NONE	UPDATED
Data mode	VFAINT	VFAINT	CCD I0 on	N	N
Observation mode	POINTING	POINTING	CCD I1 on	N	N
[deg] Pointing RA	233.837117	233.875678616818	CCD I2 on	O2	Y
[deg] Pointing Dec	-50.649251	-50.66156355666292	CCD I3 on	O1	Y
[deg] Pointing Roll	302.307913	302.4943633006874	CCD S0 on	N	N
[mm] SIM focus pos	-0.684267	-0.6828225247311905	CCD S1 on	Y	Y
[mm] SIM defocus	0	0.001444936568705701	CCD S2 on	Y	Y
[mm] SIM translation stage pos	-190.132523	-190.1400660498719	CCD S3 on	Y	Y
[mm] SIM translation stage offset	0	0.00754346686406393	CCD S4 on	Y	Y
[s] Observation start time (MET)	361851764.184000	361850484.74052	CCD S5 on	N	N
Observation start date	2009-06-20T02:21:38	2009-06-20T02:01:24	Number of optional ACIS chips dropped	0	0
[s] Observation end time (MET)	361876764.184000	361877038.39185	On-chip summing requested	N	N
Observation end date	2009-06-20T09:18:18	2009-06-20T09:23:58	Subarray requested	NONE	NONE
Read mode	TIMED	TIMED	Alternating exposures requested	N	N
			[s] Primary exposure time	0.000000	3.2

2.3 Aspect



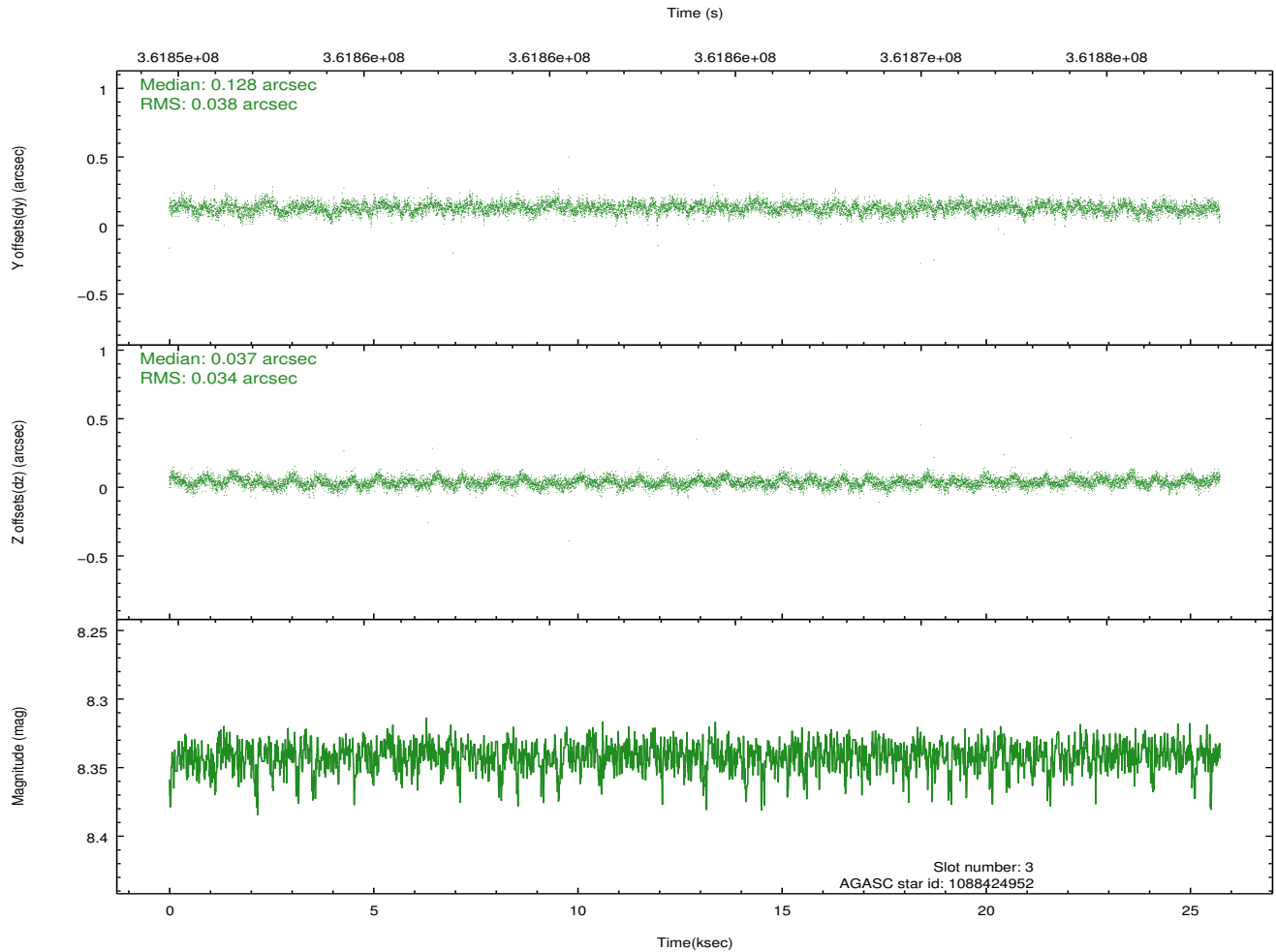
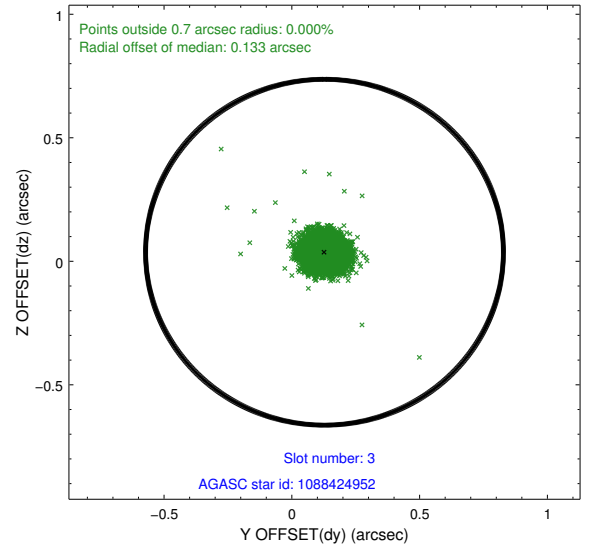
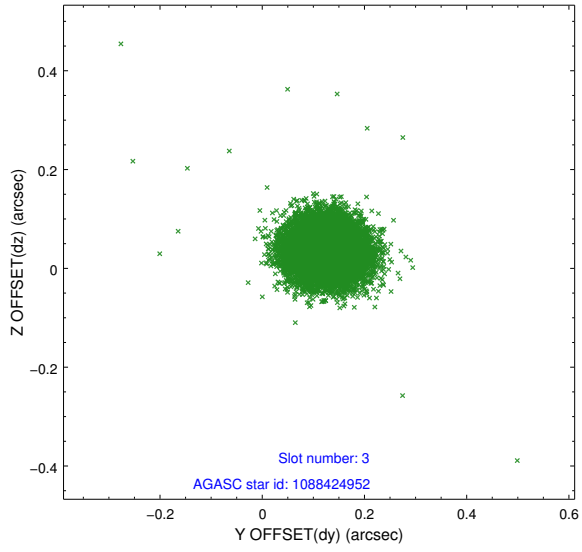


Slot Statistics

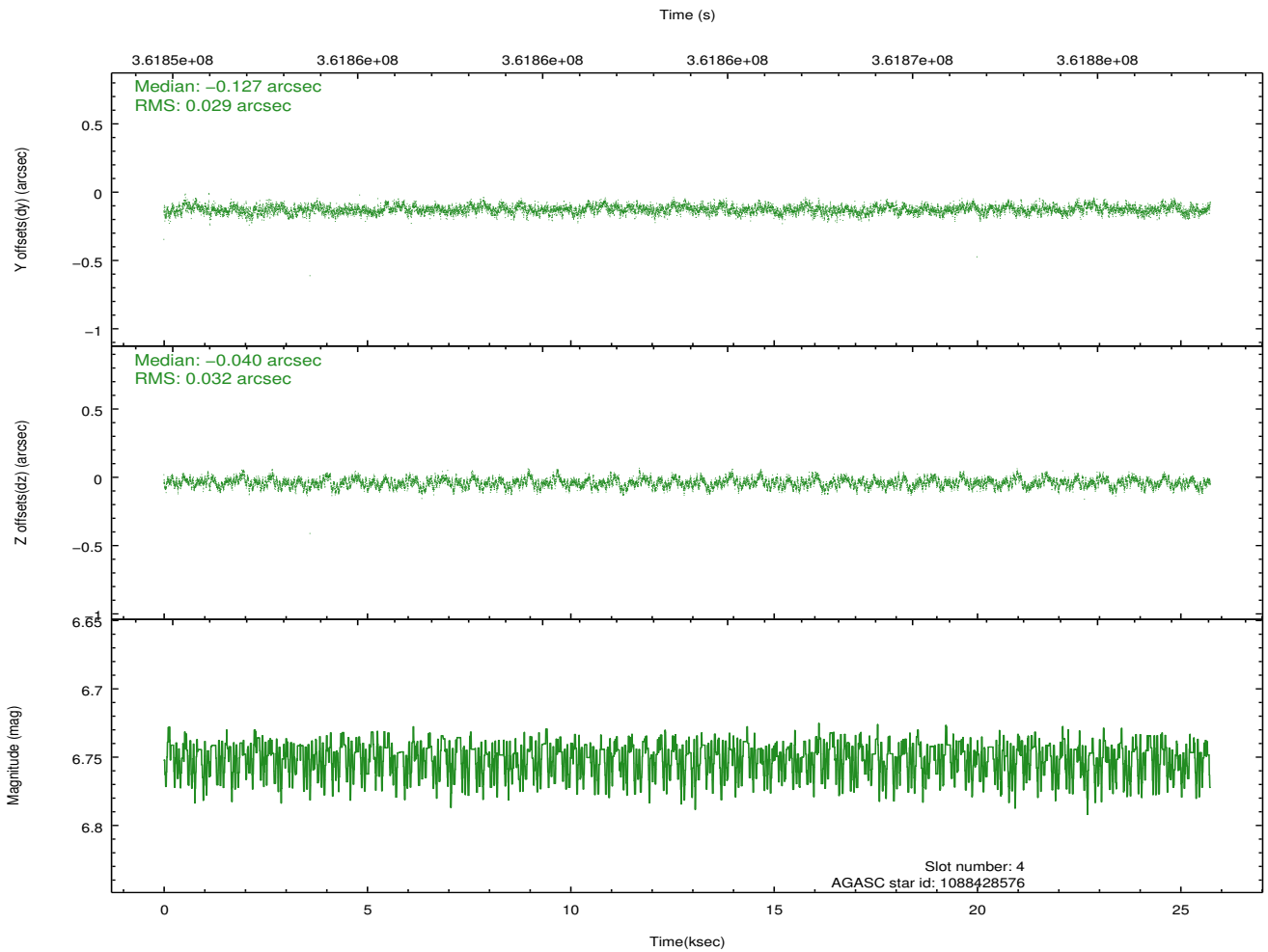
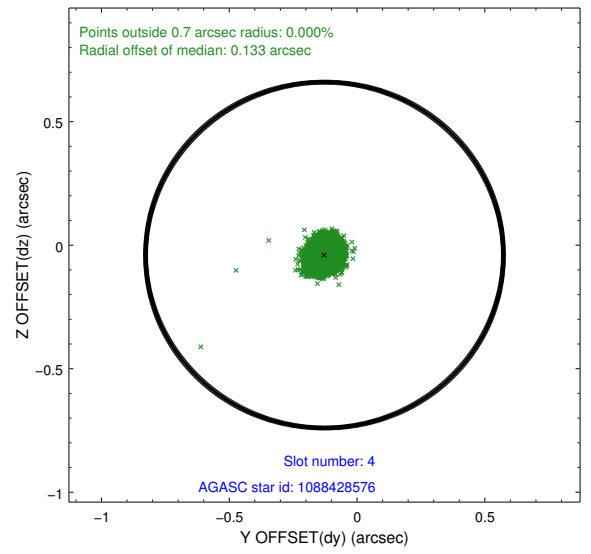
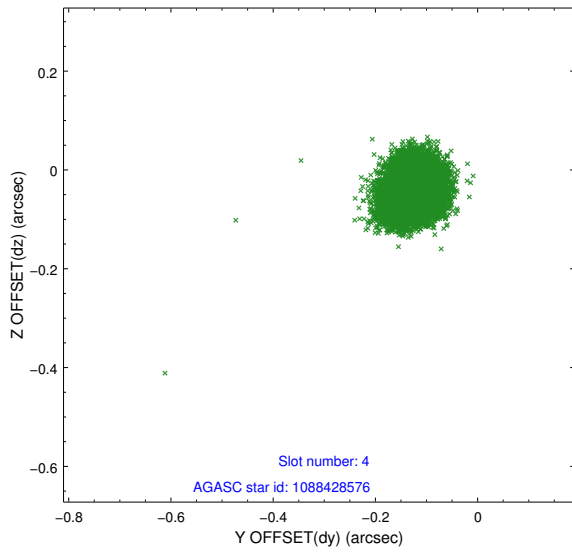
slot	status	id	mag	n_pts	med_dy	med_dz	dr1	dr2	ra	dec	mean_y	mean_z
0	FID	ACIS-S-2	6.91	6277	-0.105	-0.063	0.006	0.016	0.000000	0.000000	-769.09	-1736.59
1	FID	ACIS-S-4	7.00	6277	0.125	0.053	0.007	0.011	0.000000	0.000000	2144.38	171.86
2	FID	ACIS-S-6	7.13	6277	-0.048	0.018	0.007	0.013	0.000000	0.000000	393.12	809.37
3	GUIDE	1088424952	8.34	12548	0.128	0.037	0.053	0.087	233.972772	-49.973891	-1886.82	1564.77
4	GUIDE	1088428576	6.75	12551	-0.127	-0.040	0.046	0.073	233.965323	-50.289168	-938.09	942.12
5	GUIDE	1088825752	5.89	12552	-0.065	0.087	0.040	0.064	233.068856	-50.871168	-249.52	-1906.76
6	GUIDE	1088830976	7.78	12551	0.094	0.008	0.061	0.096	232.984982	-50.943007	-129.23	-2204.72
7	GUIDE	1088426632	8.53	12522	-0.028	-0.096	0.075	0.123	234.720512	-50.346585	173.82	2290.76

2.4 Star Slots

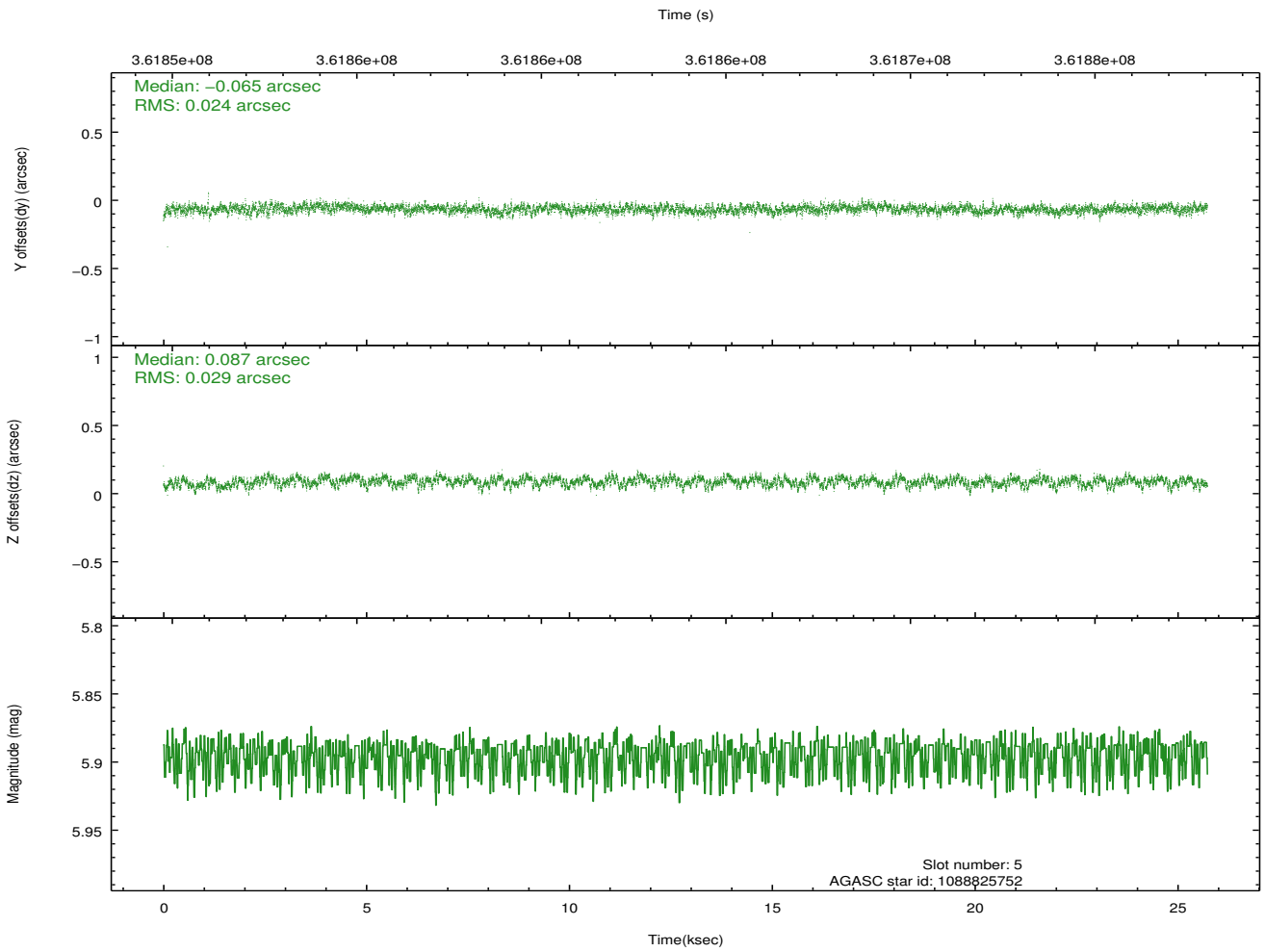
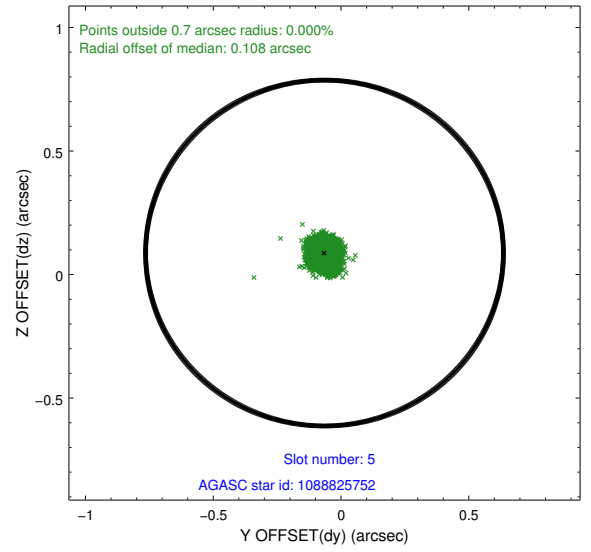
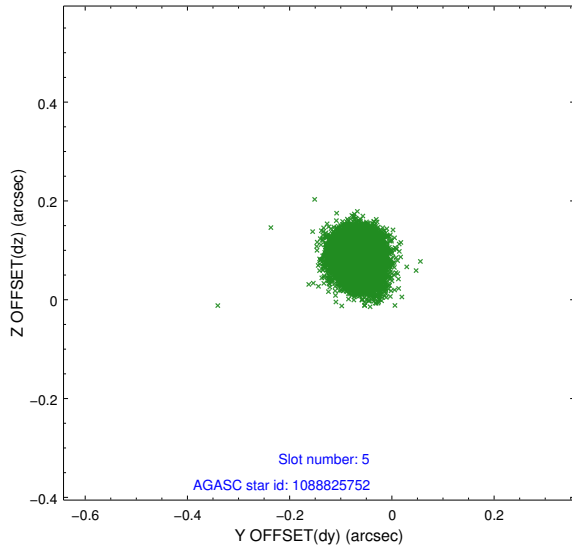
2.4.1 Slot 3



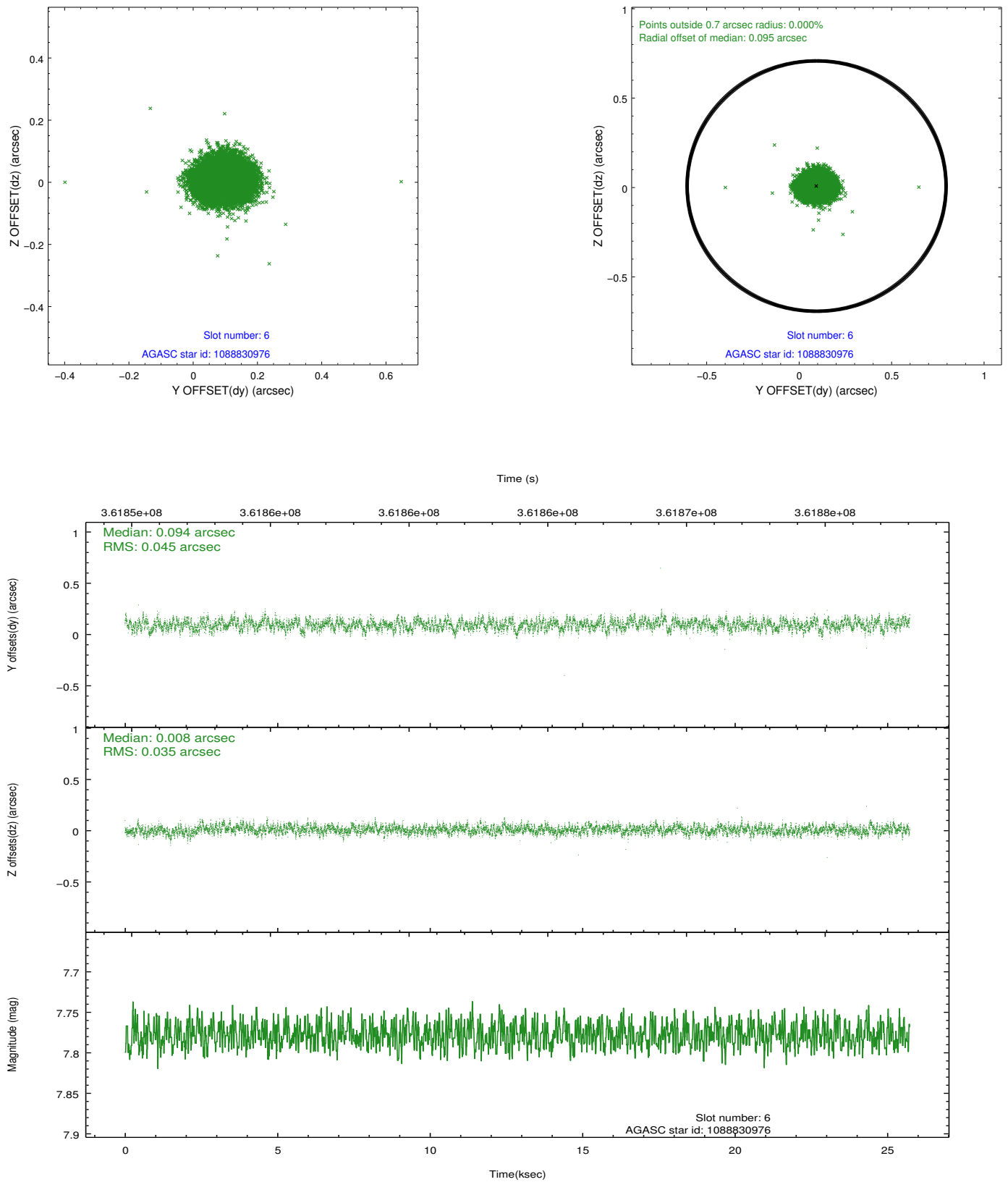
2.4.2 Slot 4



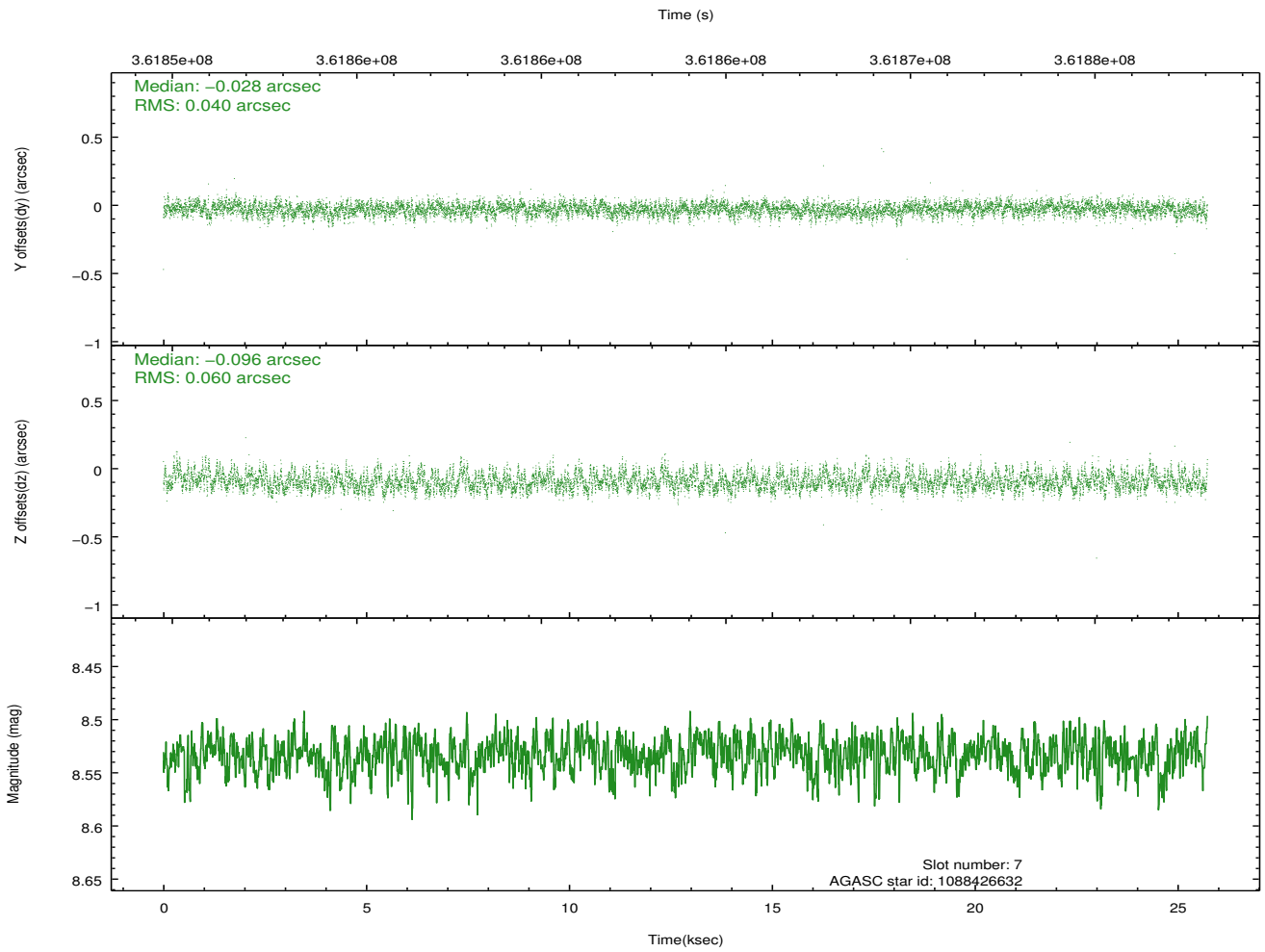
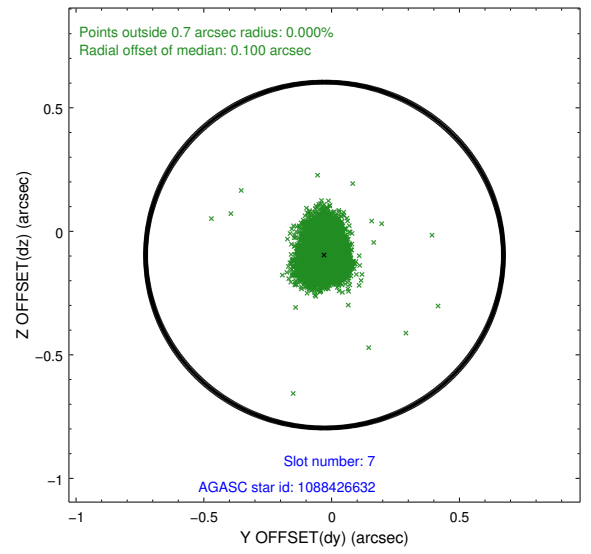
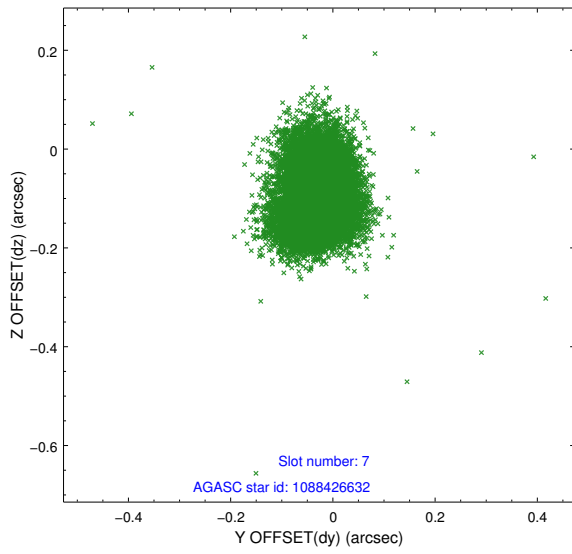
2.4.3 Slot 5



2.4.4 Slot 6

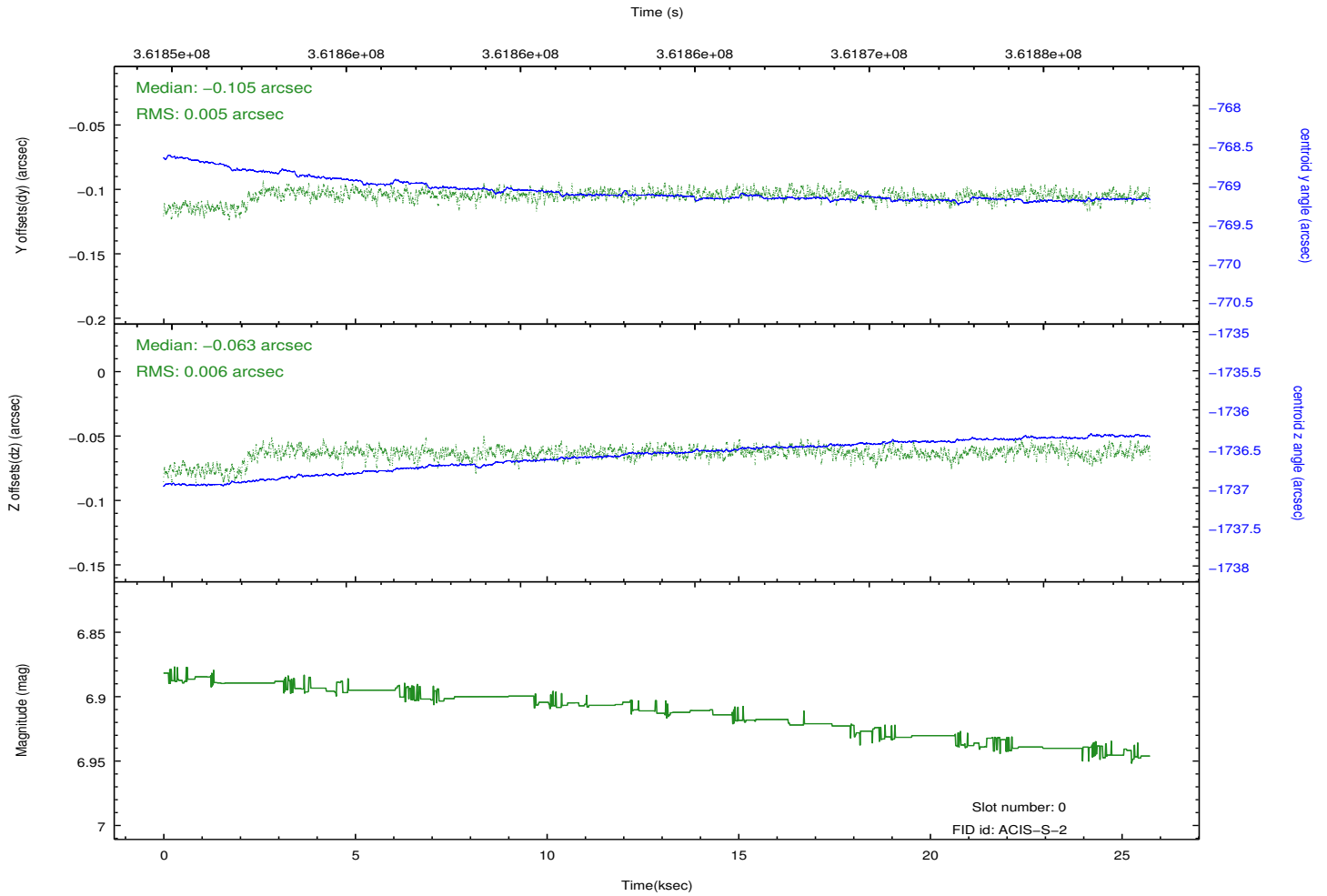
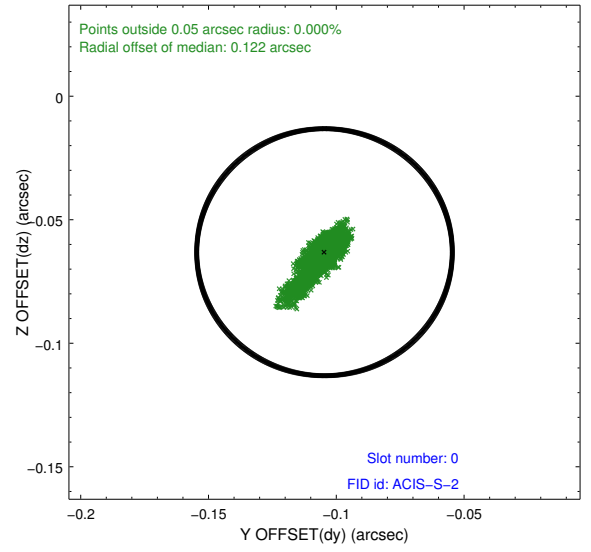
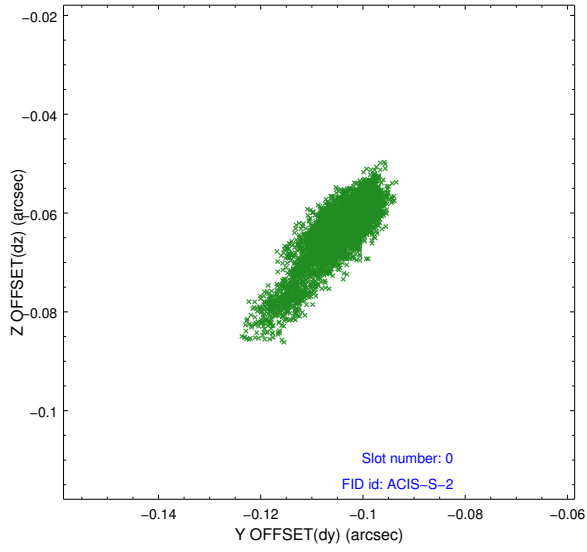


2.4.5 Slot 7

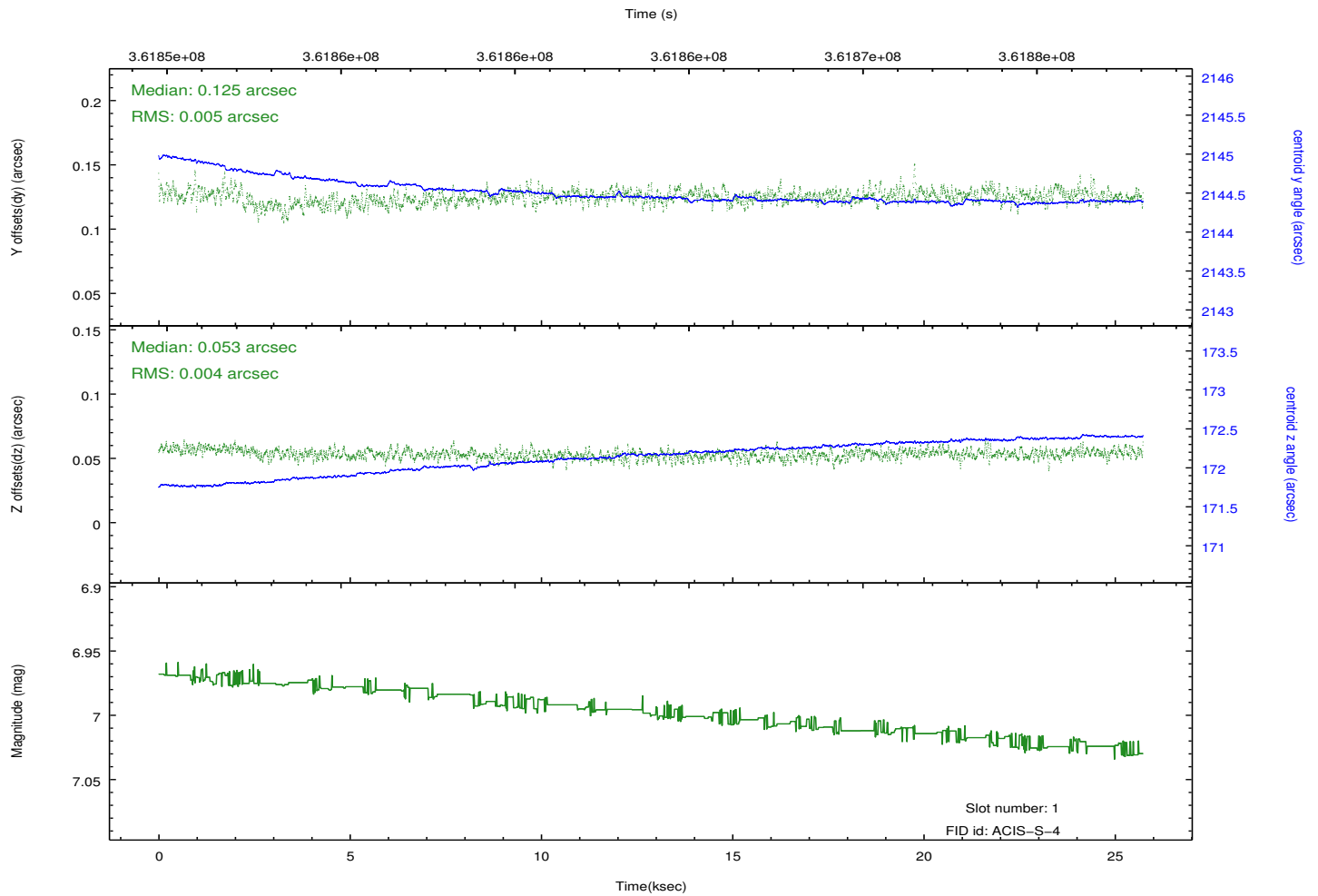
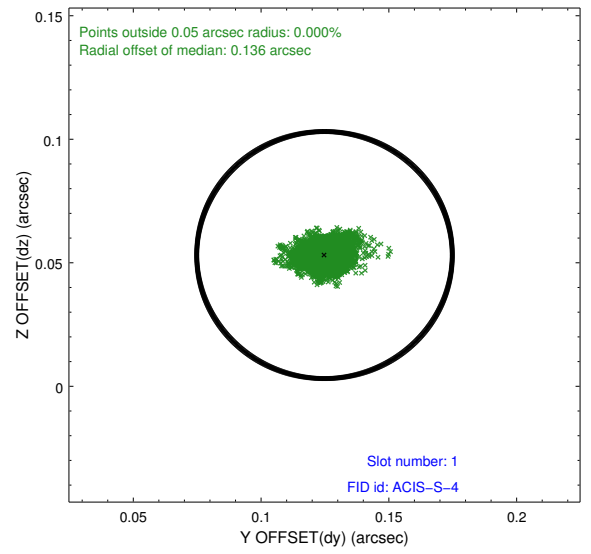
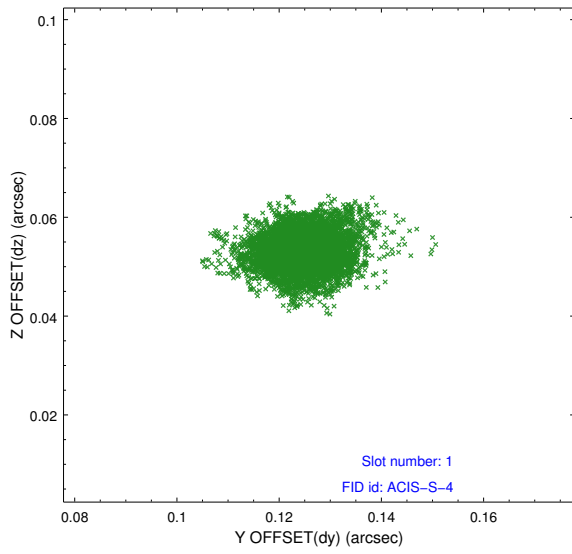


2.5 FID Slots

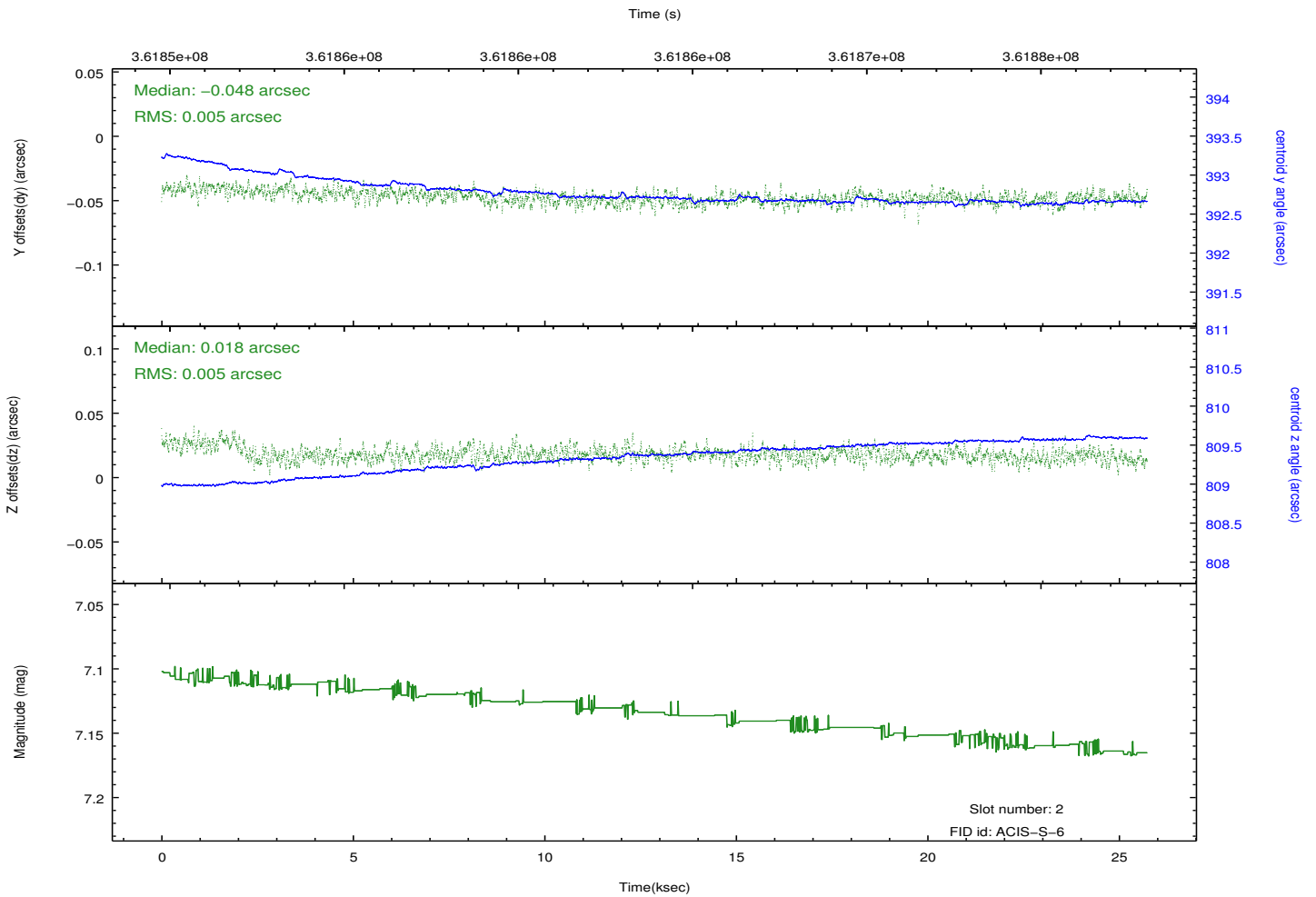
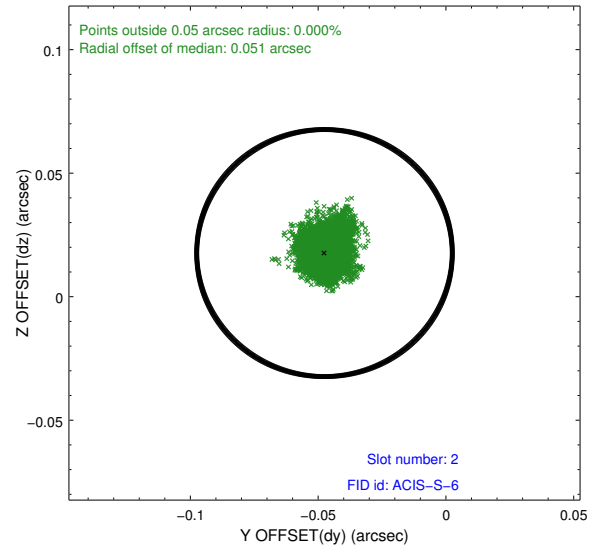
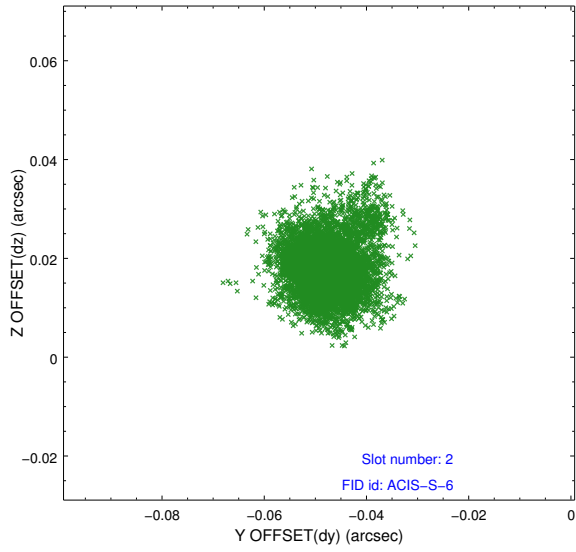
2.5.1 Slot 0



2.5.2 Slot 1



2.5.3 Slot 2



A Summary

A.1 Status

V&V Scientist	Jen Lauer
V&V Date (YYYY-MM-DD)	2012.06.12
V&V Edition	1
V&V Disposition and Status	OK
V&V Charge Time	25.0399999

A.2 Comments