

V&V Reference Report

L2 ASCDS Version : 8.4.5

Observation 10037 - L2 Version 2
Chandra X-Ray Center

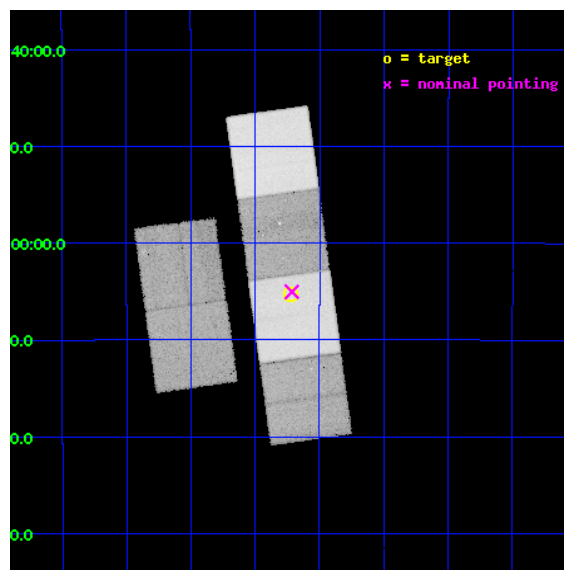
L2 Processing Date : Jun 7 2012

Contents

1	Front	2
2	OBI	3
2.1	OBI	3
2.1.1	Images	3
2.1.2	Bias	3
2.1.3	Parameters	4
2.1.4	Events	4
2.2	Compared Parameters	5
2.3	Aspect	6
2.4	Star Slots	9
2.4.1	Slot 3	9
2.4.2	Slot 4	10
2.4.3	Slot 5	11
2.4.4	Slot 6	12
2.4.5	Slot 7	13
2.5	FID Slots	14
2.5.1	Slot 0	14
2.5.2	Slot 1	15
2.5.3	Slot 2	16
A	Summary	17
A.1	Status	17
A.2	Comments	17

1 Front

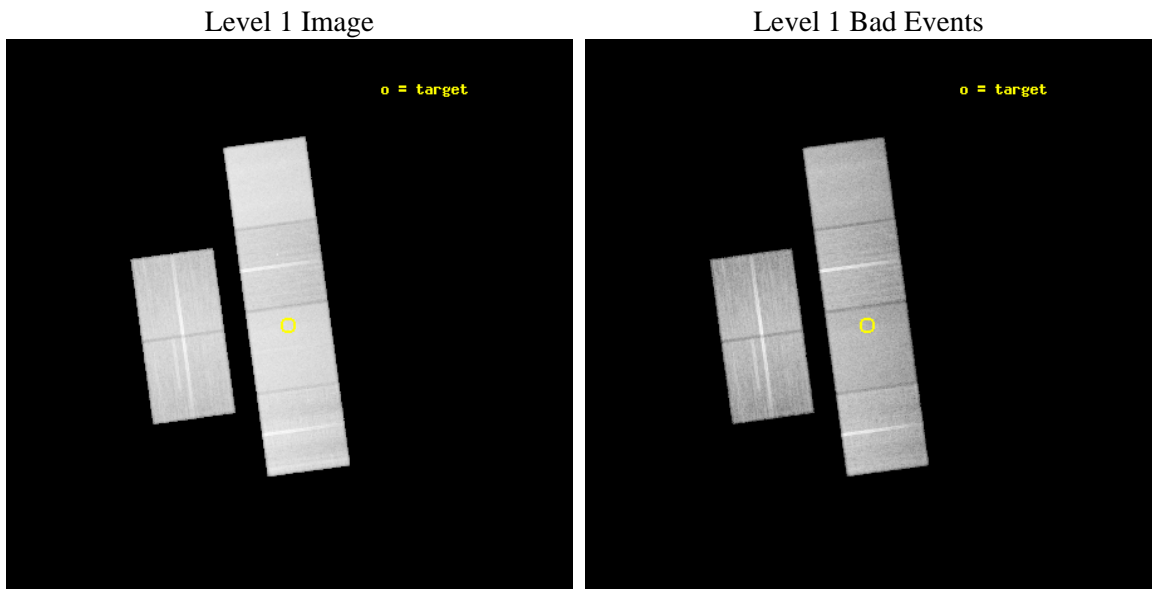
seq_num	401001	Sequence number
obs_id	10037	Observation id
title	Crustal cooling in the neutron star KS 1731-260	Proposal title
observer	Dr Edward Cackett	Principal investigator
object	KS 1731-260	Source name
dtcycle	0	
cycle	P	events from which exps? Prim/Second/Both
ra_targ	263.555833	Observer's specified target RA [deg]
dec_targ	-26.088528	Observer's specified target Dec [deg]
ra_nom	263.55363838997	Nominal RA [deg]
dec_nom	-26.084086901736	Nominal Dec [deg]
roll_nom	82.155666615575	Nominal Roll [deg]
revision	2	Processing version of data
ontime	31249.772275686	Sum of GTIs [s]
livetime	30854.068842778	Livetime [s]
ontime2	31249.81331569	Sum of GTIs [s]
ontime3	31249.649155676	Sum of GTIs [s]
ontime5	31249.731235683	Sum of GTIs [s]
ontime6	31249.69019568	Sum of GTIs [s]
ontime7	31249.772275686	Sum of GTIs [s]
ontime8	31249.608115673	Sum of GTIs [s]
l2events	556141	Number of level 2 events



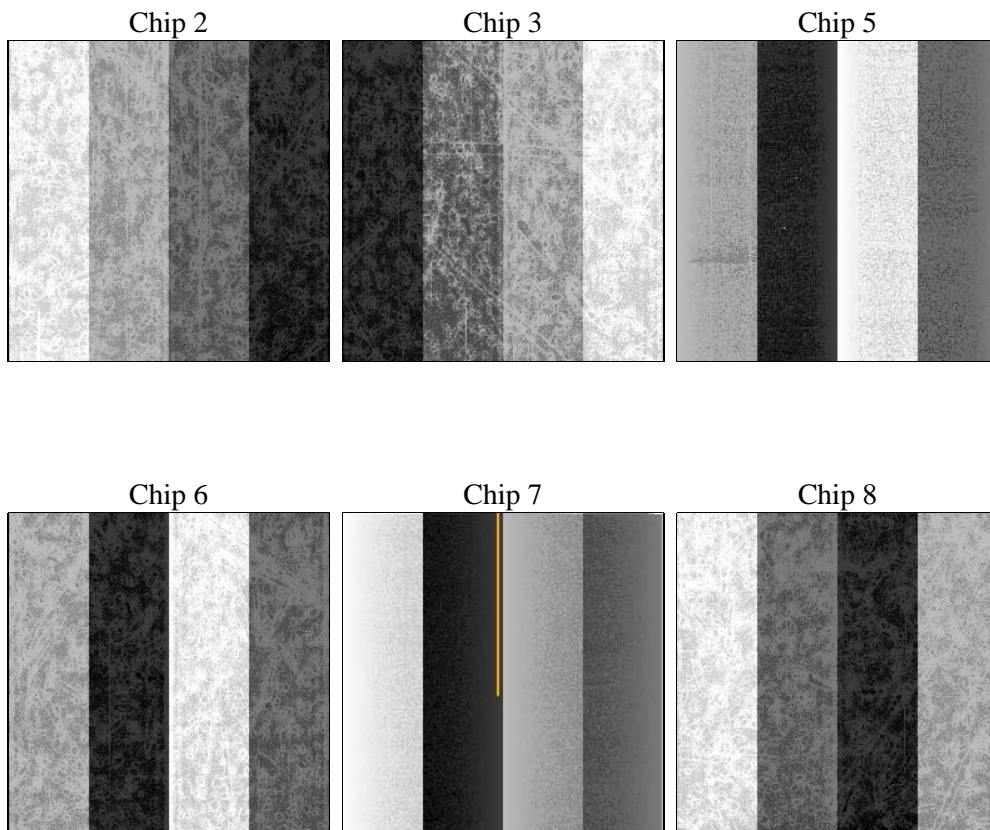
2 OBI

2.1 OBI

2.1.1 Images



2.1.2 Bias



2.1.3 Parameters

obi_num	0	Obi number	sched_exp_time	31300.000000	[s] Scheduled observation exposure time
ascdsver	8.4.5	Processing system revision	ontime	31249.772275686	Sum of GTIs [s]
caldbver	4.4.10	 	ontime2	31249.81331569	Sum of GTIs [s]
date	2012-06-07T16:25:56	Date and time of file creation	ontime3	31249.649155676	Sum of GTIs [s]
revision	2	Processing version of data	ontime5	31249.731235683	Sum of GTIs [s]
			ontime6	31249.69019568	Sum of GTIs [s]
			ontime7	31249.772275686	Sum of GTIs [s]
			ontime8	31249.608115673	Sum of GTIs [s]
			l1events	2367317	Number of level 1 events

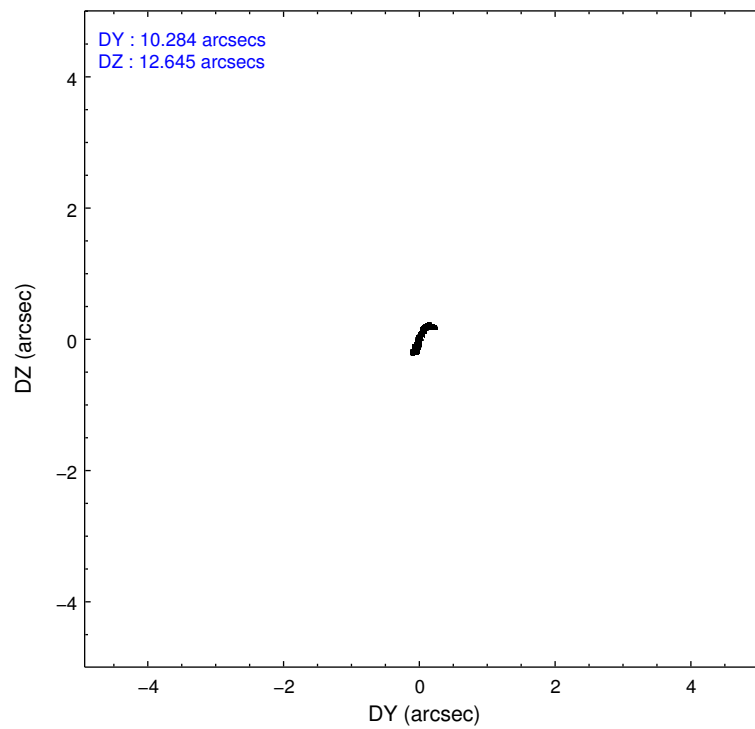
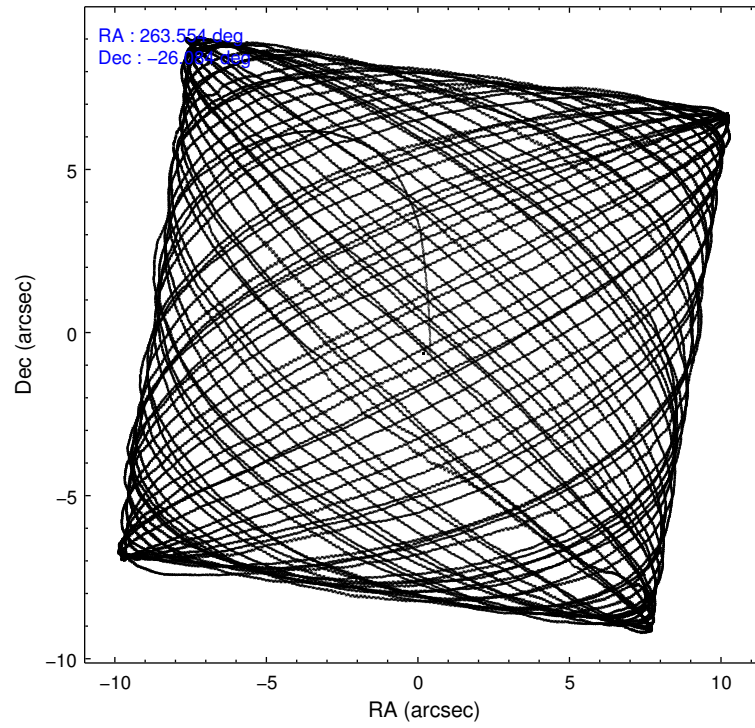
2.1.4 Events

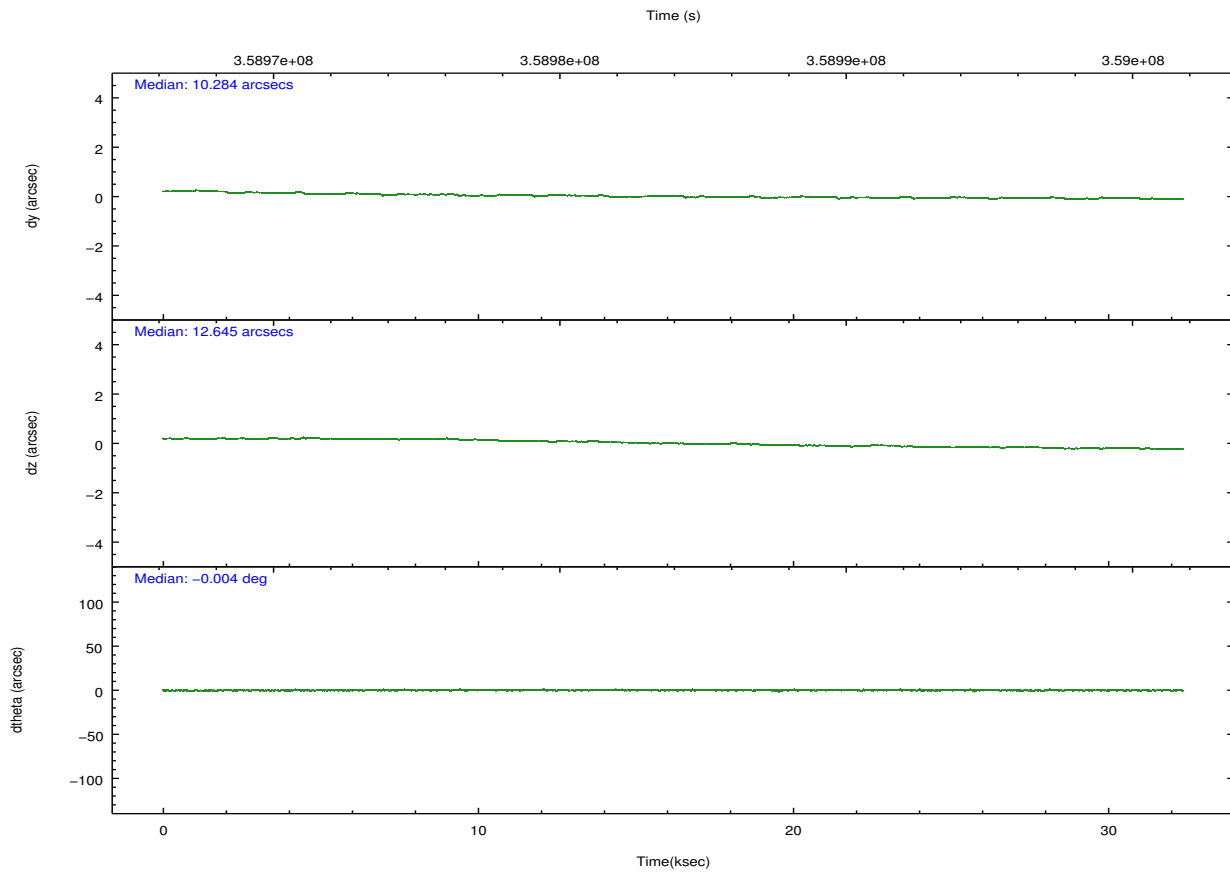
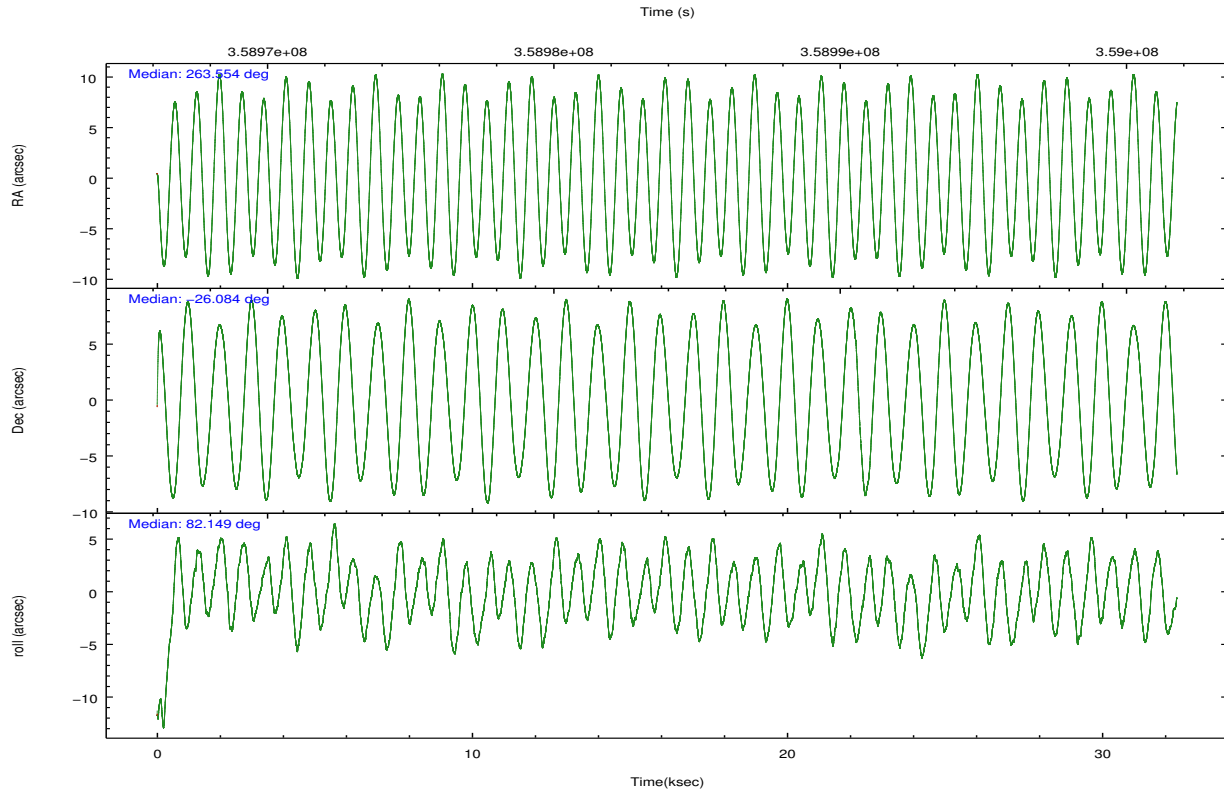
	ccd 2	ccd 3	ccd 5	ccd 6	ccd 7	ccd 8		ccd 2	ccd 3	ccd 5	ccd 6	ccd 7	ccd 8
level 1 events	328813	318752	502920	331706	462179	422947	grade 0 events	16757	17699	12017	16501	16273	32587
rejected events	289029	278755	277540	290204	269201	322385		5%	5%	2%	4%	3%	7%
rejected %	87%	87%	55%	87%	58%	76%	grade 1 events	226	234	720	175	505	364
								0%	0%	0%	0%	0%	0%
							grade 2 events	8816	7896	71652	9093	40066	22733
								2%	2%	14%	2%	8%	5%
							grade 3 events	3625	3656	8014	3813	16080	10210
								1%	1%	1%	1%	3%	2%
							grade 4 events	3662	3741	7790	3731	15854	9504
								1%	1%	1%	1%	3%	2%
							grade 5 events	13888	15425	35898	15729	43071	21529
								4%	4%	7%	4%	9%	5%
							grade 6 events	6930	7010	125942	8371	104727	25540
								2%	2%	25%	2%	22%	6%
							grade 7 events	274909	263091	240887	274293	225603	300480
								83%	82%	47%	82%	48%	71%

2.2 Compared Parameters

Parameter	Planned	Actual	Parameter	Planned	Actual
Instrument	ACIS	ACIS	Obspar format version number	7	7
Detector	ACIS-235678	ACIS-235678	Obspar file type	PREDICTED	ACTUAL
Grating	NONE	NONE	Obspar update status	NONE	UPDATED
Data mode	FAINT	FAINT	CCD I0 on	N	N
Observation mode	POINTING	POINTING	CCD I1 on	N	N
[deg] Pointing RA	263.565517	263.5536383899669	CCD I2 on	O1	Y
[deg] Pointing Dec	-26.109282	-26.08408690173576	CCD I3 on	O2	Y
[deg] Pointing Roll	82.004262	82.15566661557463	CCD S0 on	N	N
[mm] SIM focus pos	-0.684267	-0.6828225247311905	CCD S1 on	Y	Y
[mm] SIM defocus	0	0.001444936568705701	CCD S2 on	Y	Y
[mm] SIM translation stage pos	-190.132523	-190.1400660498719	CCD S3 on	Y	Y
[mm] SIM translation stage offset	0	0.00754346686406393	CCD S4 on	Y	Y
[s] Observation start time (MET)	358968834.184000	358966470.79678	CCD S5 on	N	N
Observation start date	2009-05-17T17:32:48	2009-05-17T16:54:30	Number of optional ACIS chips dropped	0	0
[s] Observation end time (MET)	359000134.184000	359000398.81097	On-chip summing requested	N	N
Observation end date	2009-05-18T02:14:28	2009-05-18T02:19:58	Subarray requested	NONE	NONE
Read mode	TIMED	TIMED	Alternating exposures requested	N	N
			[s] Primary exposure time	0.000000	3.2

2.3 Aspect





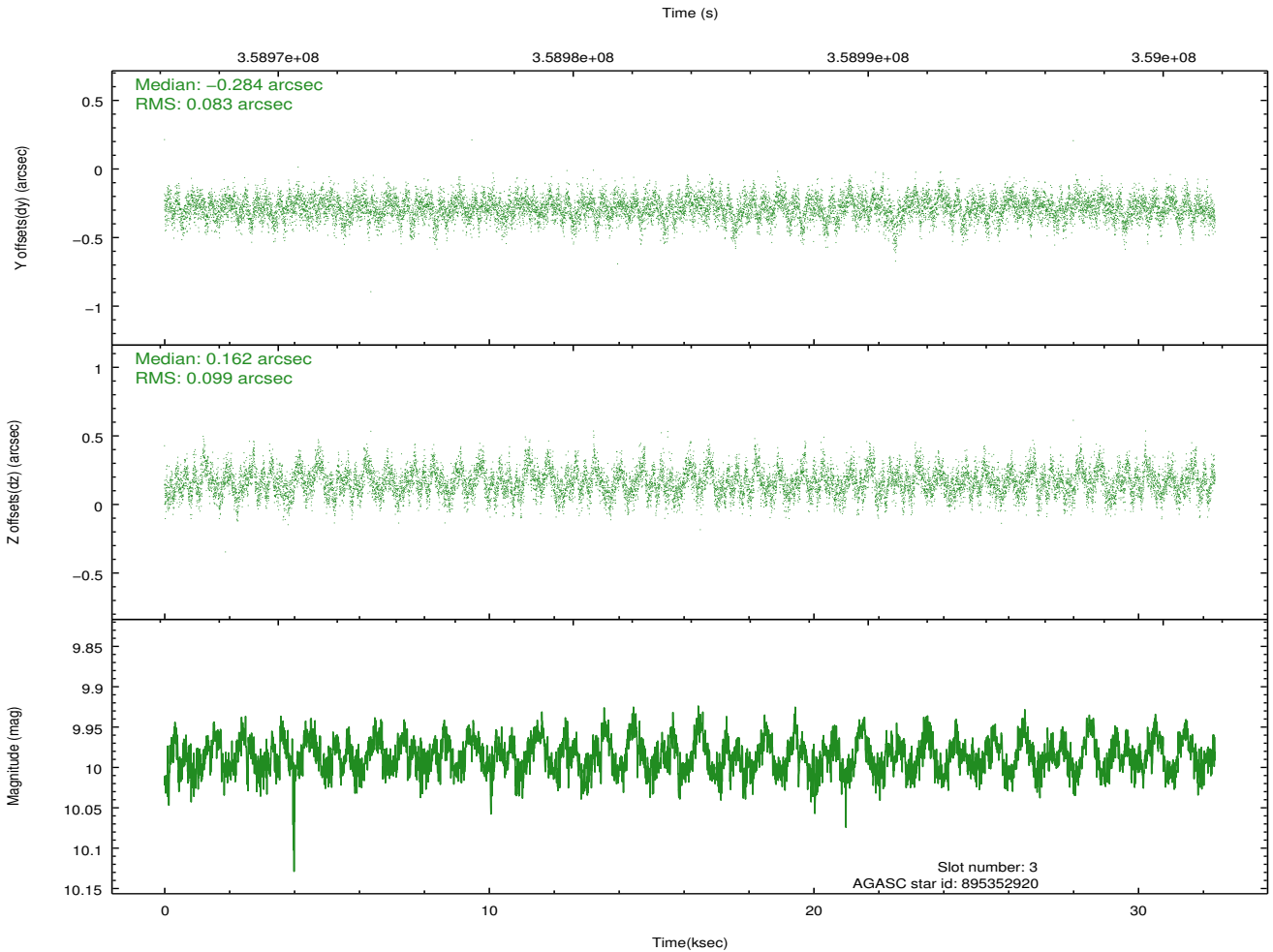
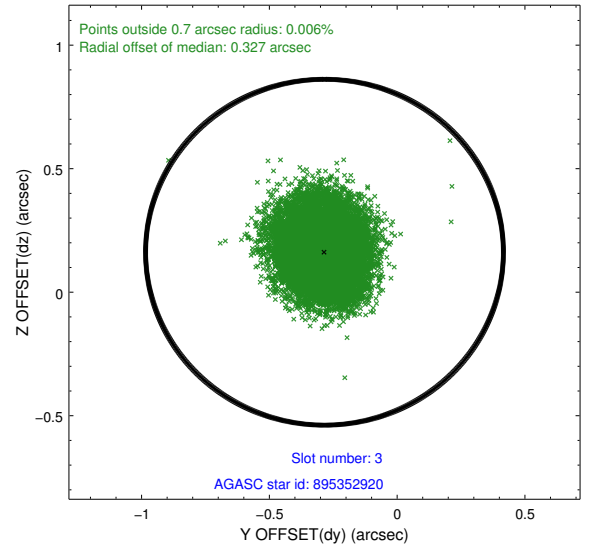
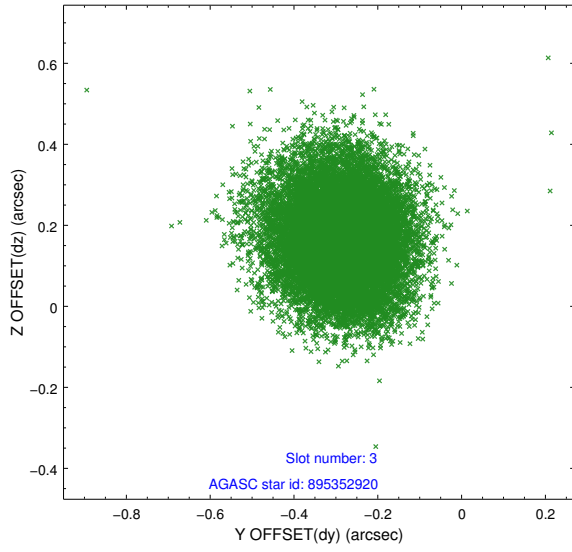
Slot Statistics

slot	status	id	mag	n_pts	med_dy	med_dz	dr1	dr2	ra	dec	mean_y	mean_z
0	FID	ACIS-S-1	7.02	7895	0.041	-0.046	0.007	0.012	0.000000	0.000000	932.87	-1729.67
1	FID	ACIS-S-4	7.02	7894	0.083	0.017	0.007	0.011	0.000000	0.000000	2150.40	174.46
2	FID	ACIS-S-5	7.05	7895	-0.151	0.042	0.006	0.011	0.000000	0.000000	-1816.07	168.24
3	GUIDE	895352920	9.99	15756	-0.284	0.162	0.137	0.225	264.217496	-25.713600	1699.58	-1896.04
4	GUIDE	895748544	7.98	15780	0.063	0.048	0.089	0.147	263.692859	-26.739685	-2190.11	-721.31
5	GUIDE	895881920	9.42	15778	0.132	-0.048	0.095	0.157	263.913988	-26.630022	-1701.54	-1371.64
6	GUIDE	895223200	10.44	15757	-0.012	-0.264	0.173	0.277	262.834279	-26.055766	-145.28	2367.02
7	GUIDE	895882448	10.25	15754	0.097	0.103	0.178	0.283	264.180279	-26.834668	-2315.54	-2319.62

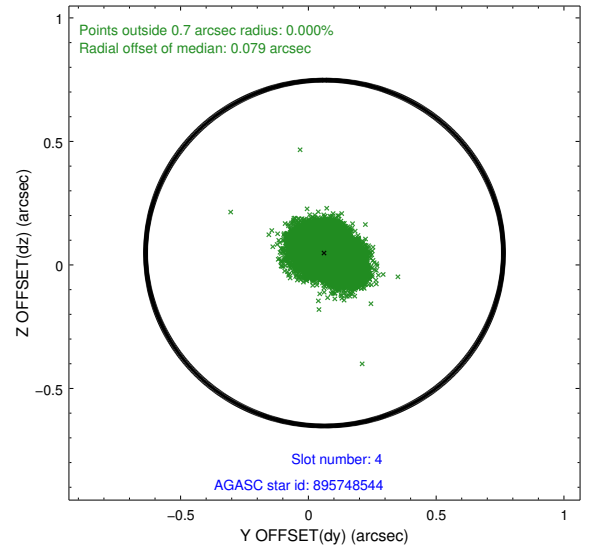
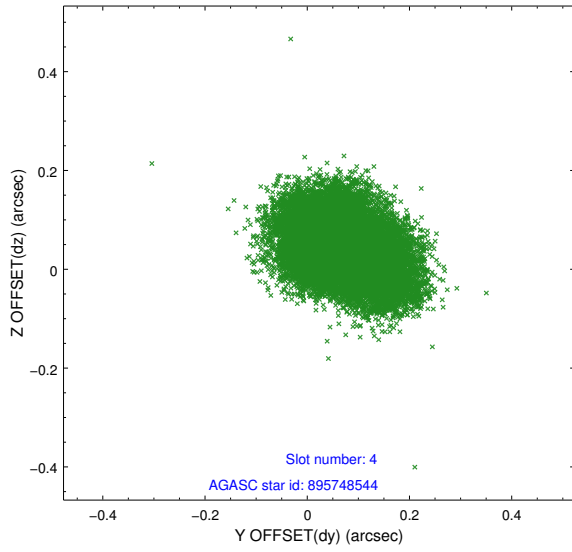
∞

2.4 Star Slots

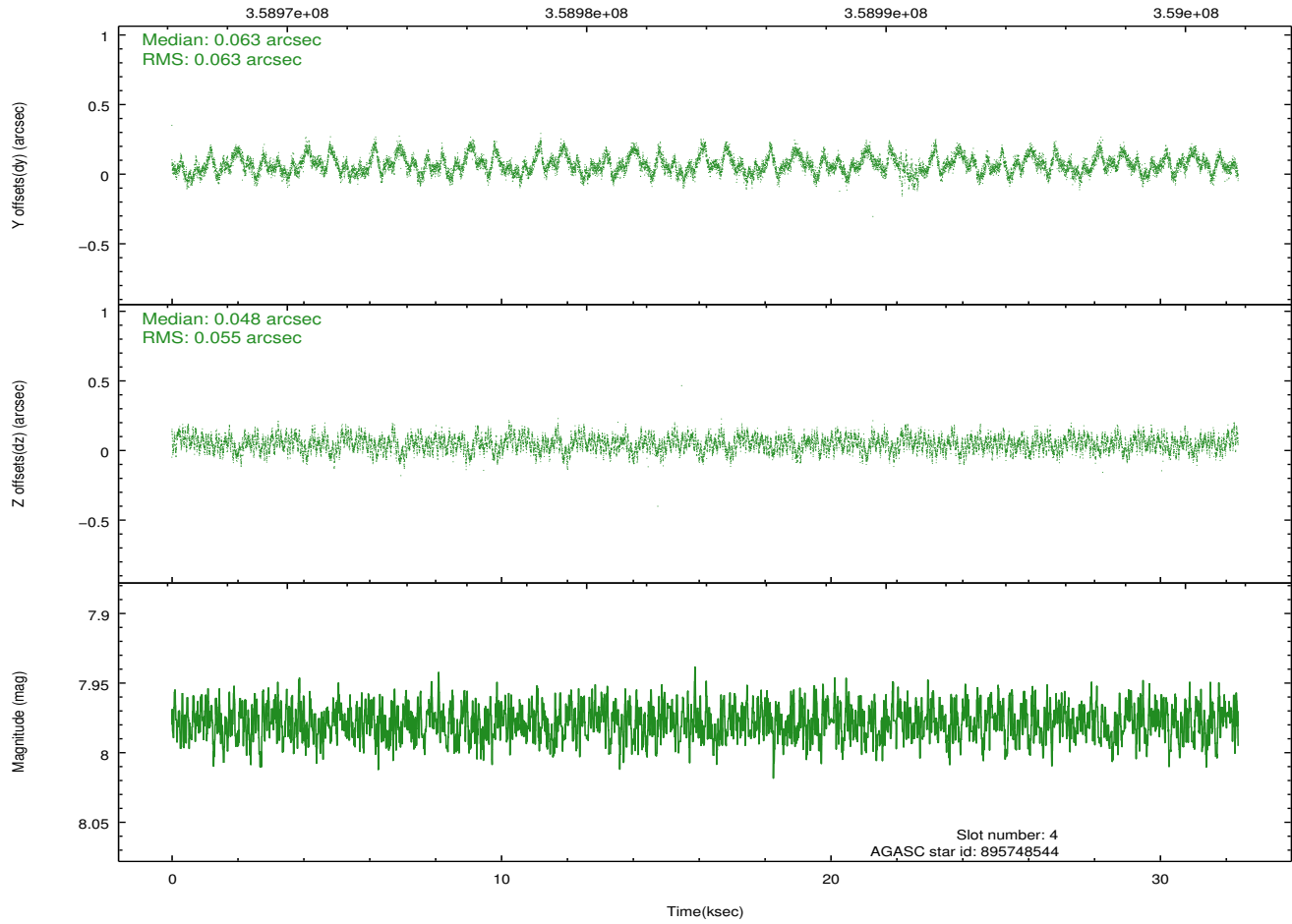
2.4.1 Slot 3



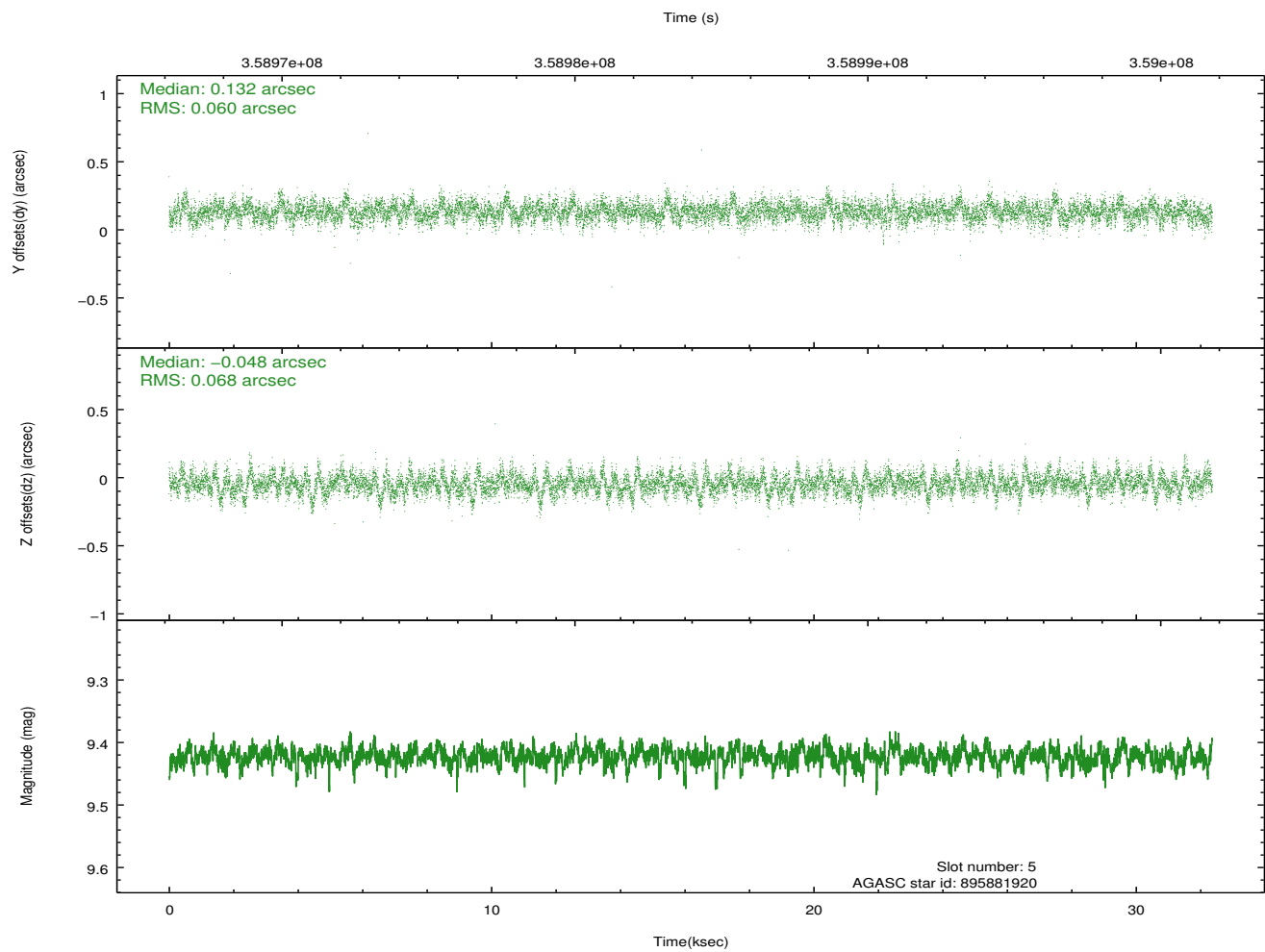
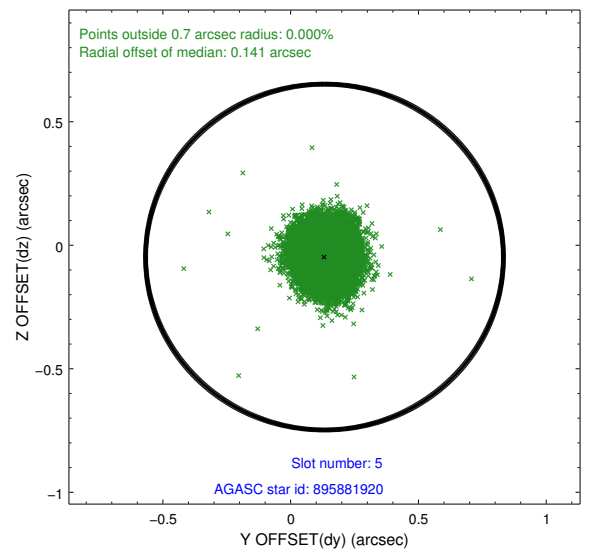
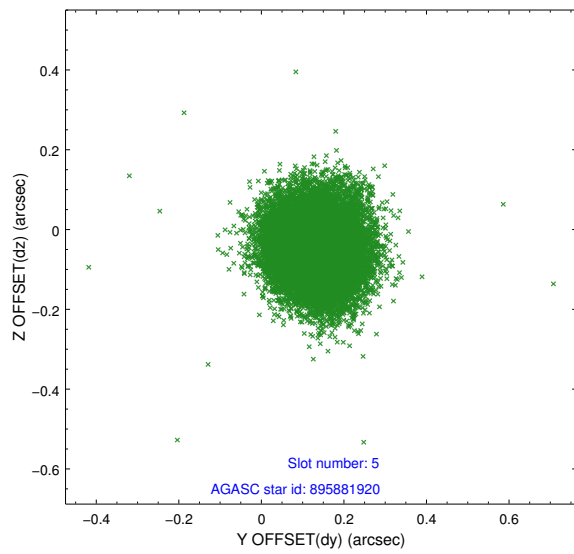
2.4.2 Slot 4



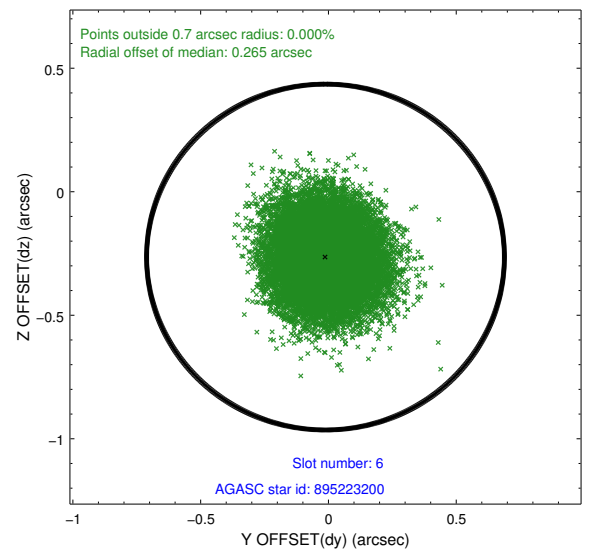
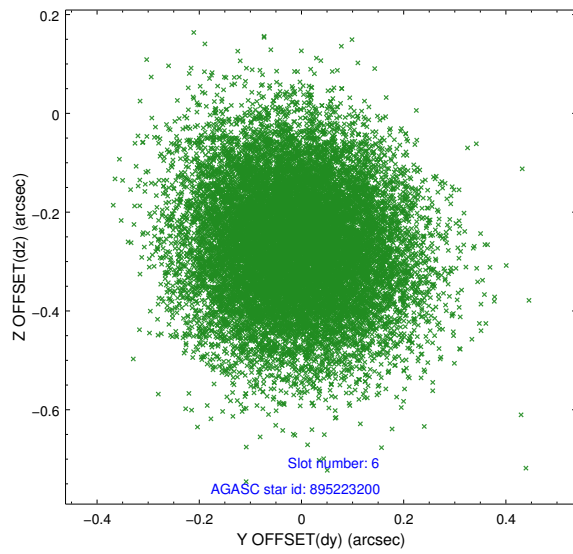
Time (s)



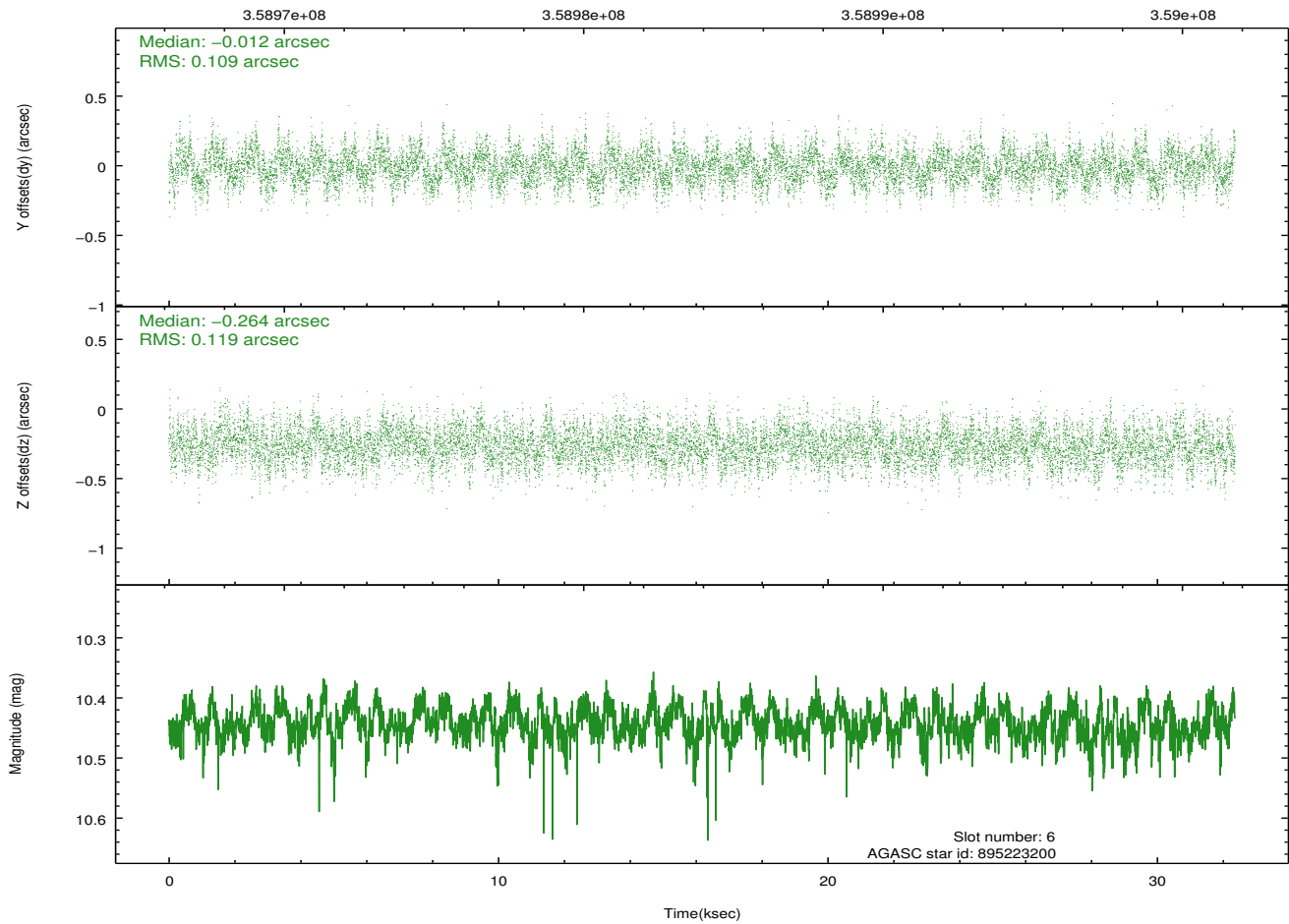
2.4.3 Slot 5



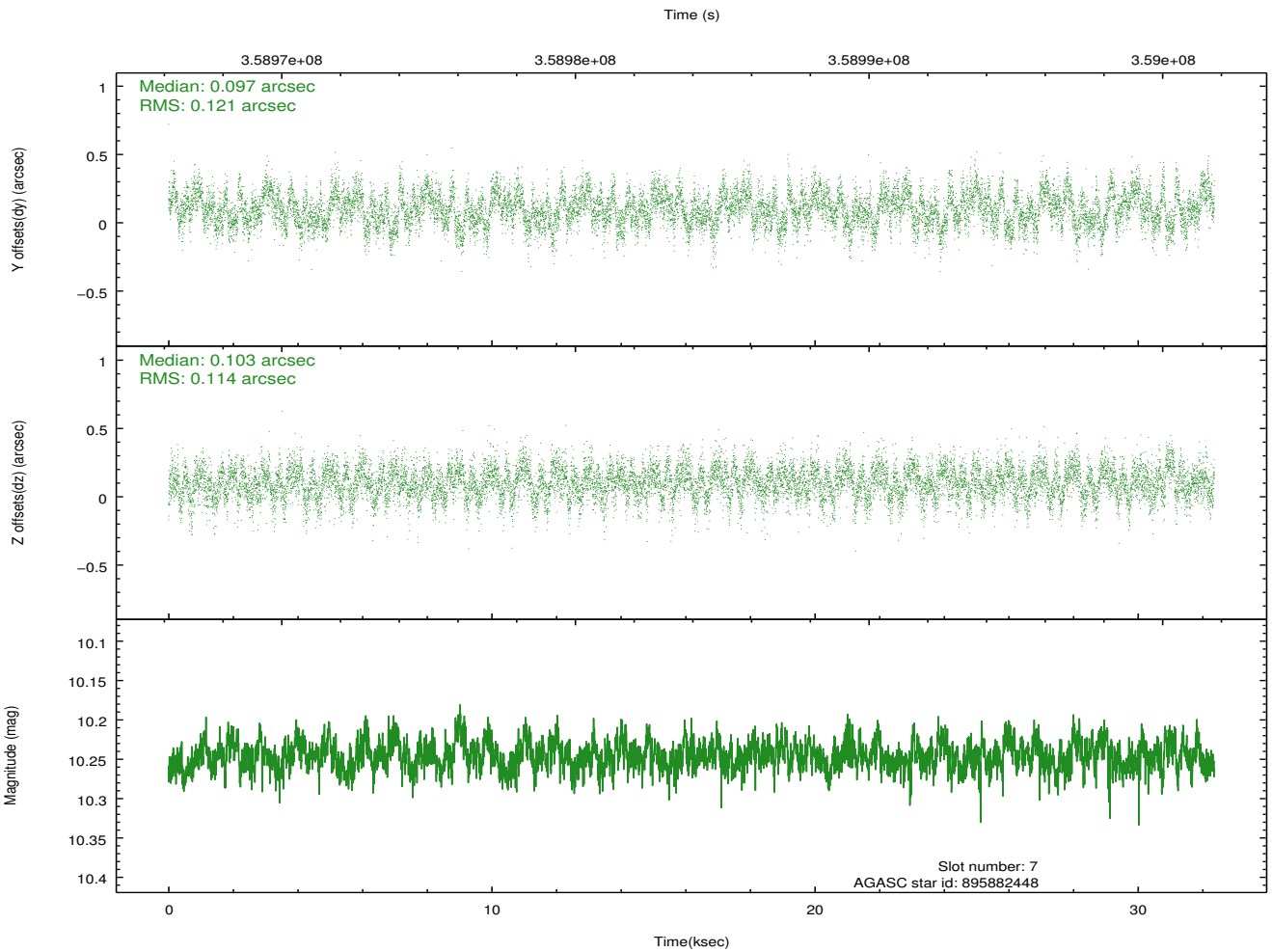
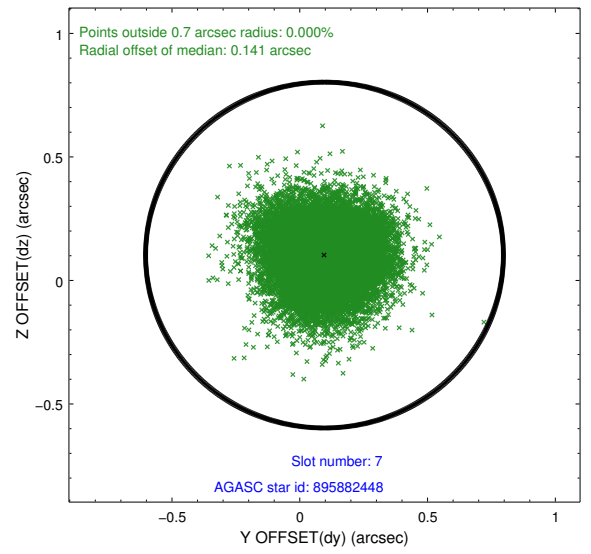
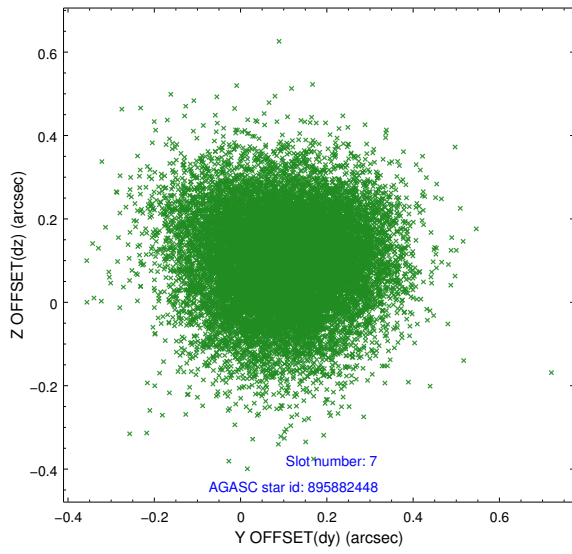
2.4.4 Slot 6



Time (s)

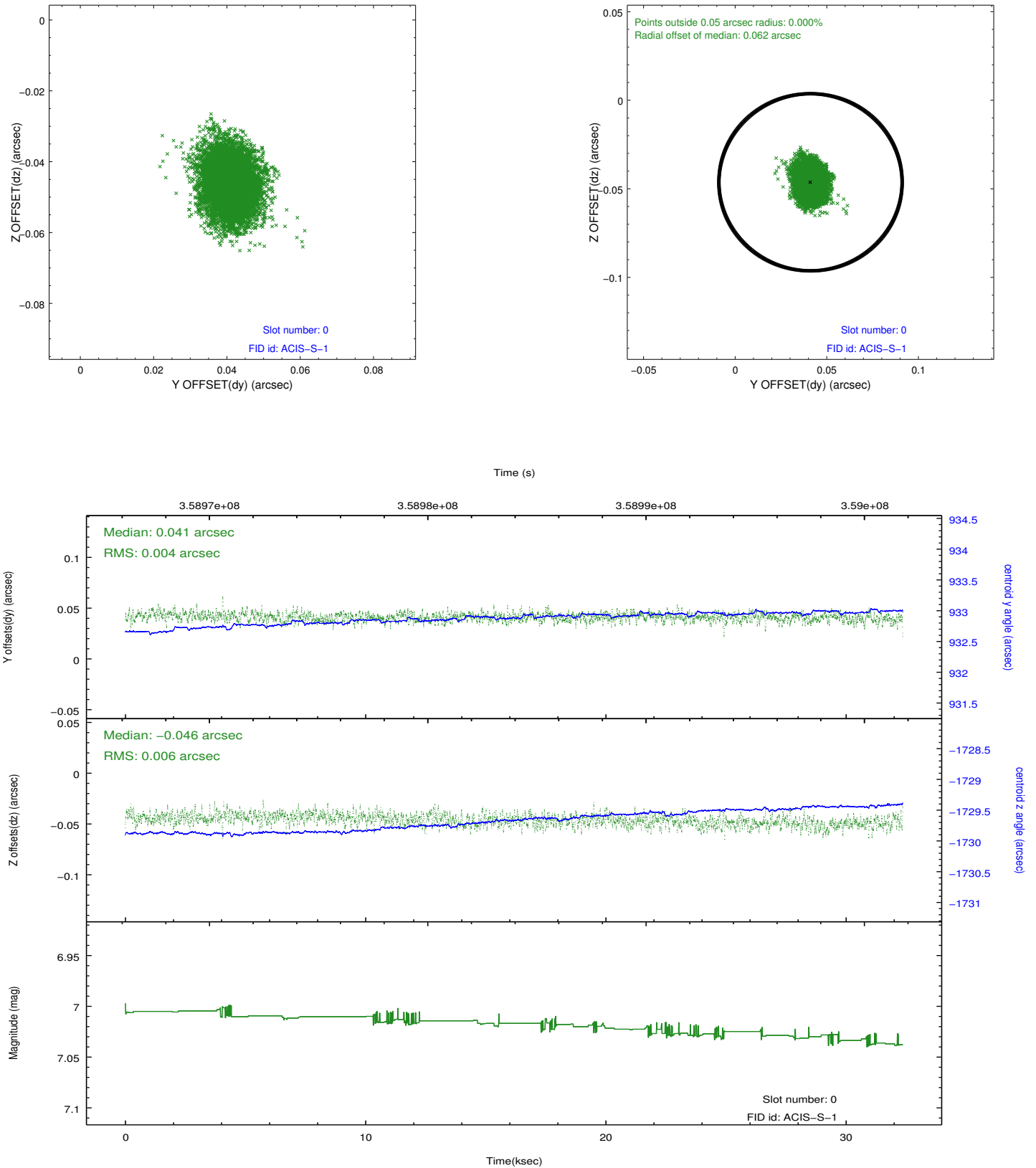


2.4.5 Slot 7

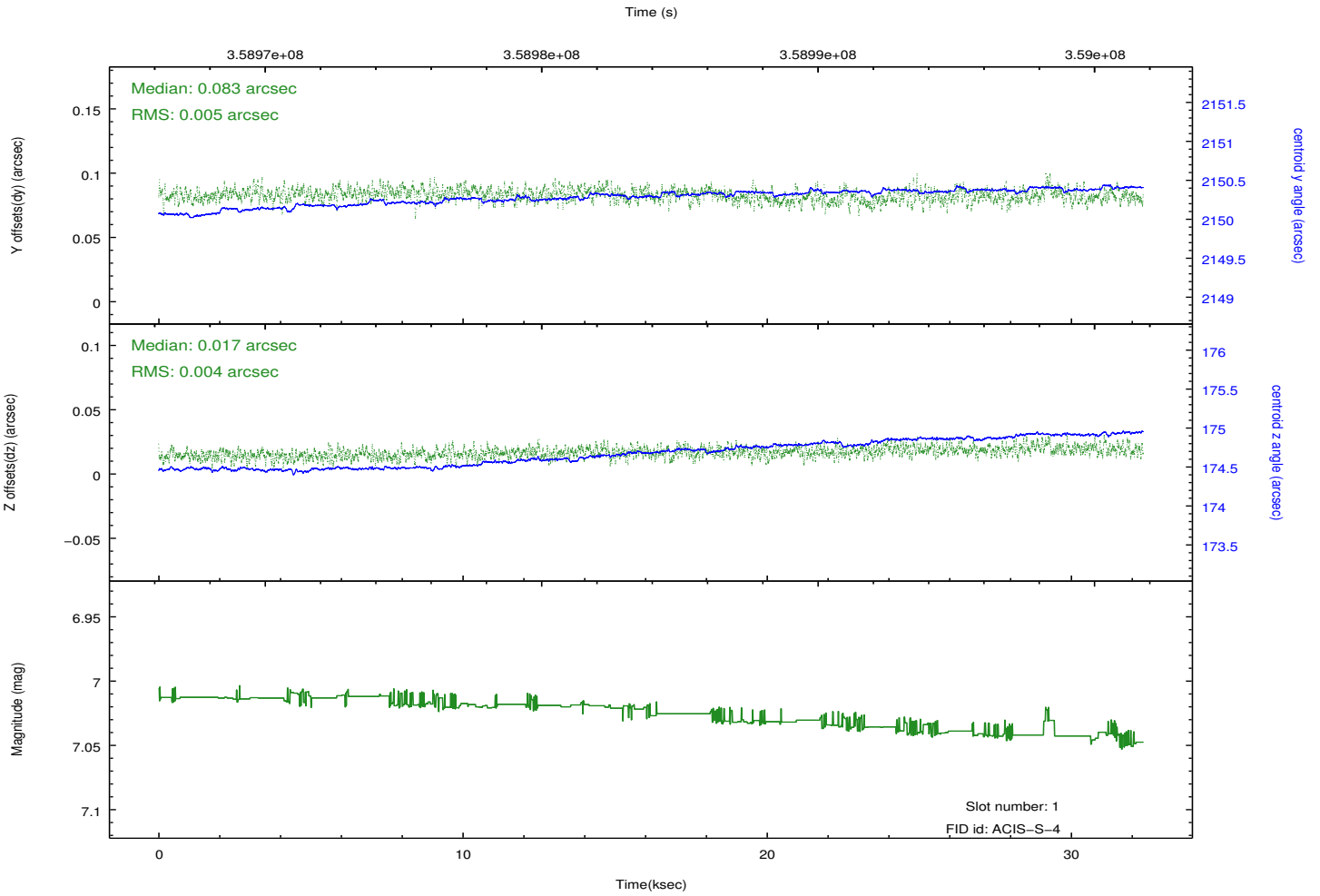
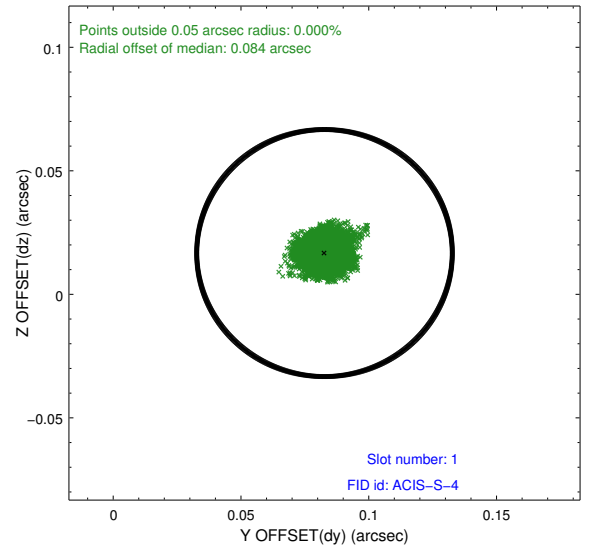
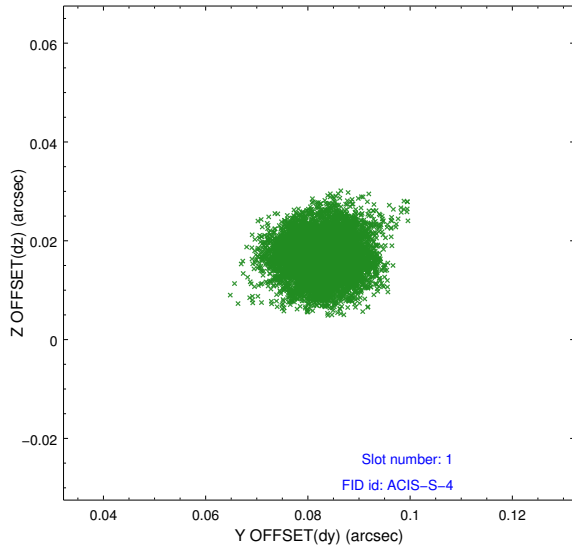


2.5 FID Slots

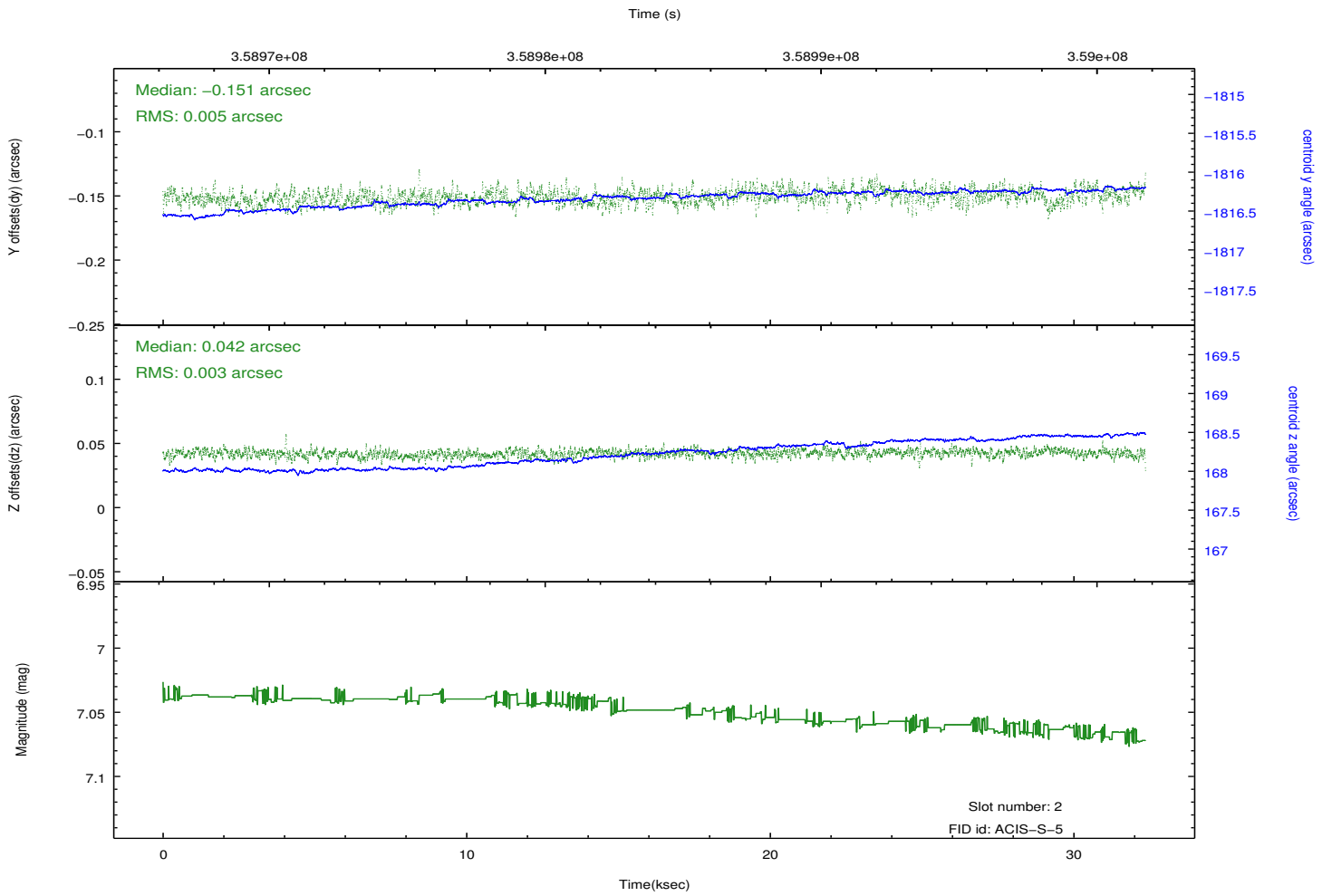
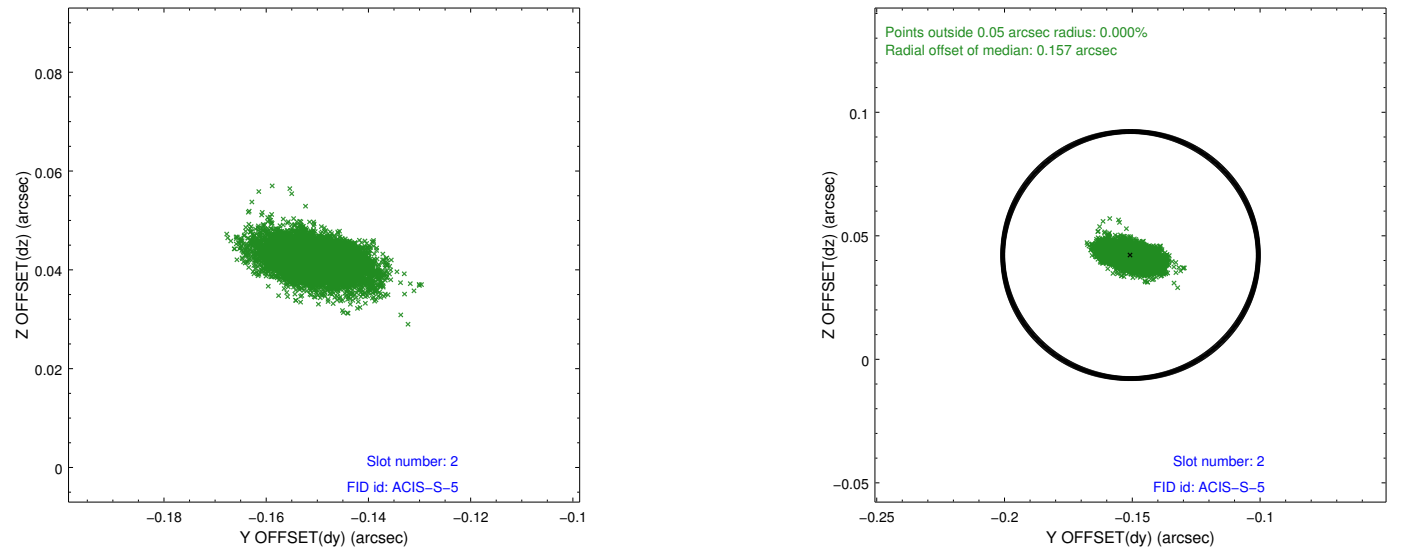
2.5.1 Slot 0



2.5.2 Slot 1



2.5.3 Slot 2



A Summary

A.1 Status

V&V Scientist	Jen Lauer
V&V Date (YYYY-MM-DD)	2012.06.11
V&V Edition	1
V&V Disposition and Status	OK
V&V Charge Time	31.2479998

A.2 Comments