

V&V Reference Report

L2 ASCDS Version : 8.4.5

Observation 10847 - L2 Version 3
Chandra X-Ray Center

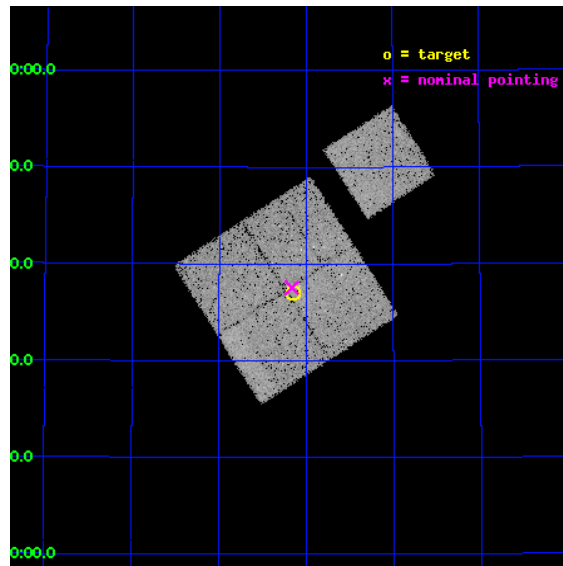
L2 Processing Date : Jun 21 2012

Contents

1	Front	2
2	OBI	3
2.1	OBI	3
2.1.1	Images	3
2.1.2	Bias	3
2.1.3	Parameters	4
2.1.4	Events	4
2.2	Compared Parameters	5
2.3	Aspect	6
2.4	Star Slots	9
2.4.1	Slot 3	9
2.4.2	Slot 4	10
2.4.3	Slot 5	11
2.4.4	Slot 6	12
2.4.5	Slot 7	13
2.5	FID Slots	14
2.5.1	Slot 0	14
2.5.2	Slot 1	15
2.5.3	Slot 2	16
A	Summary	17
A.1	Status	17
A.2	Comments	17

1 Front

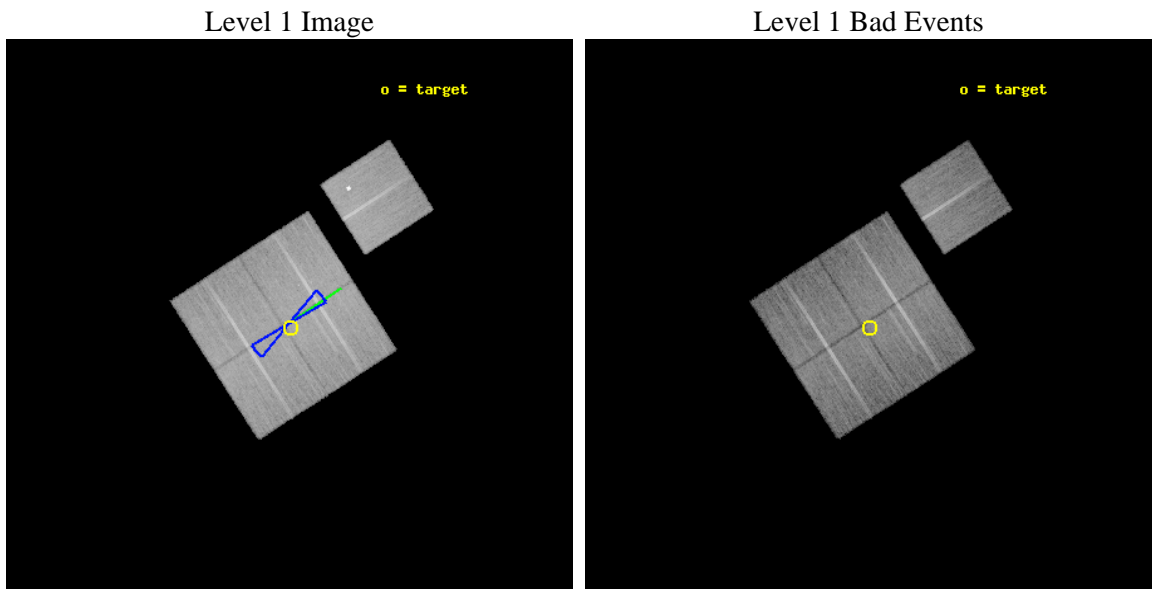
seq_num	900798	Sequence number
obs_id	10847	Observation id
title	The Evolution of Faint AGN at High Redshift	Proposal title
observer	Prof Kirpal Nandra	Principal investigator
object	AEGIS-3	Source name
dtcycle	0	
cycle	P	events from which exps? Prim/Second/Both
ra_targ	214.5375	Observer's specified target RA [deg]
dec_targ	52.617889	Observer's specified target Dec [deg]
ra_nom	214.54102160116	Nominal RA [deg]
dec_nom	52.625662784103	Nominal Dec [deg]
roll_nom	57.205894984788	Nominal Roll [deg]
revision	3	Processing version of data
ontime	19523.164679408	Sum of GTIs [s]
livetime	19268.080160127	Livetime [s]
ontime0	19516.759618759	Sum of GTIs [s]
ontime1	19523.082599401	Sum of GTIs [s]
ontime2	19516.841728568	Sum of GTIs [s]
ontime3	19523.164679408	Sum of GTIs [s]
ontime6	19523.000519395	Sum of GTIs [s]
l2events	69971	Number of level 2 events



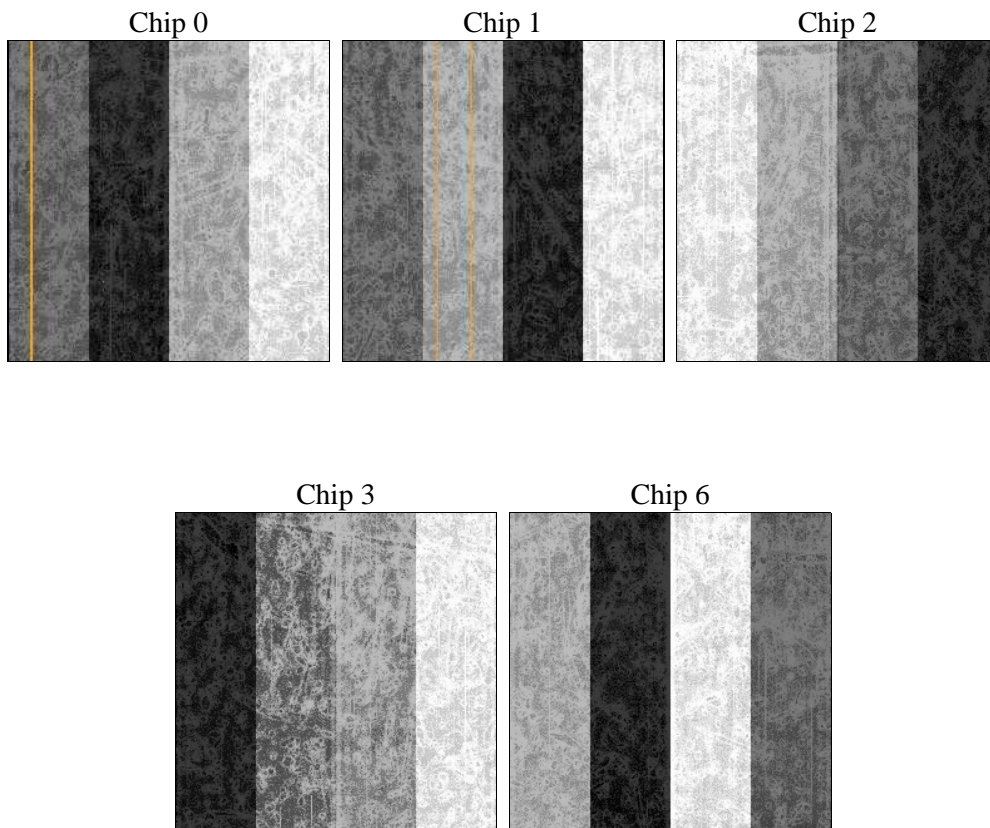
2 OBI

2.1 OBI

2.1.1 Images



2.1.2 Bias



2.1.3 Parameters

obi_num	0	Obi number	sched_exp_time	19460.000000	[s] Scheduled observation exposure time
ascdsver	8.4.5	Processing system revision	ontime	19523.164679408	Sum of GTIs [s]
caldbver	4.4.10	 	ontime0	19516.759618759	Sum of GTIs [s]
date	2012-06-21T17:19:09	Date and time of file creation	ontime1	19523.082599401	Sum of GTIs [s]
revision	3	Processing version of data	ontime2	19516.841728568	Sum of GTIs [s]
			ontime3	19523.164679408	Sum of GTIs [s]
			ontime6	19523.000519395	Sum of GTIs [s]
			l1events	805509	Number of level 1 events

2.1.4 Events

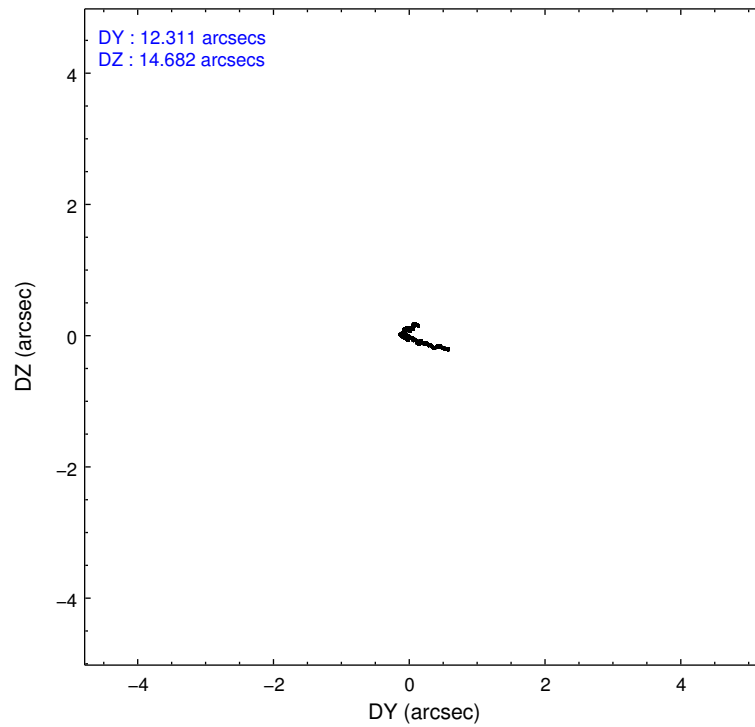
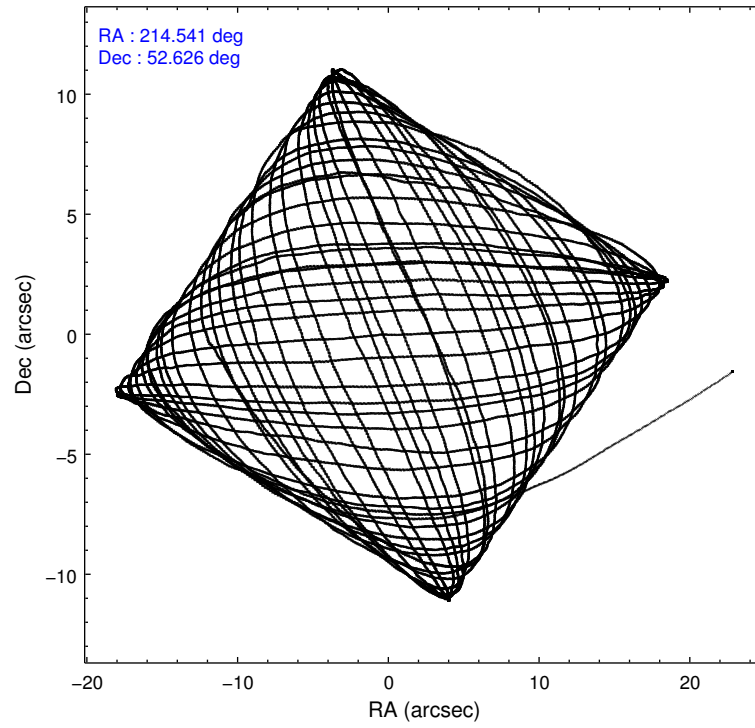
	ccd 0	ccd 1	ccd 2	ccd 3	ccd 6
level 1 events	150524	153663	167733	165223	168366
rejected events	134117	135307	150823	149406	145753
rejected %	89%	88%	89%	90%	86%

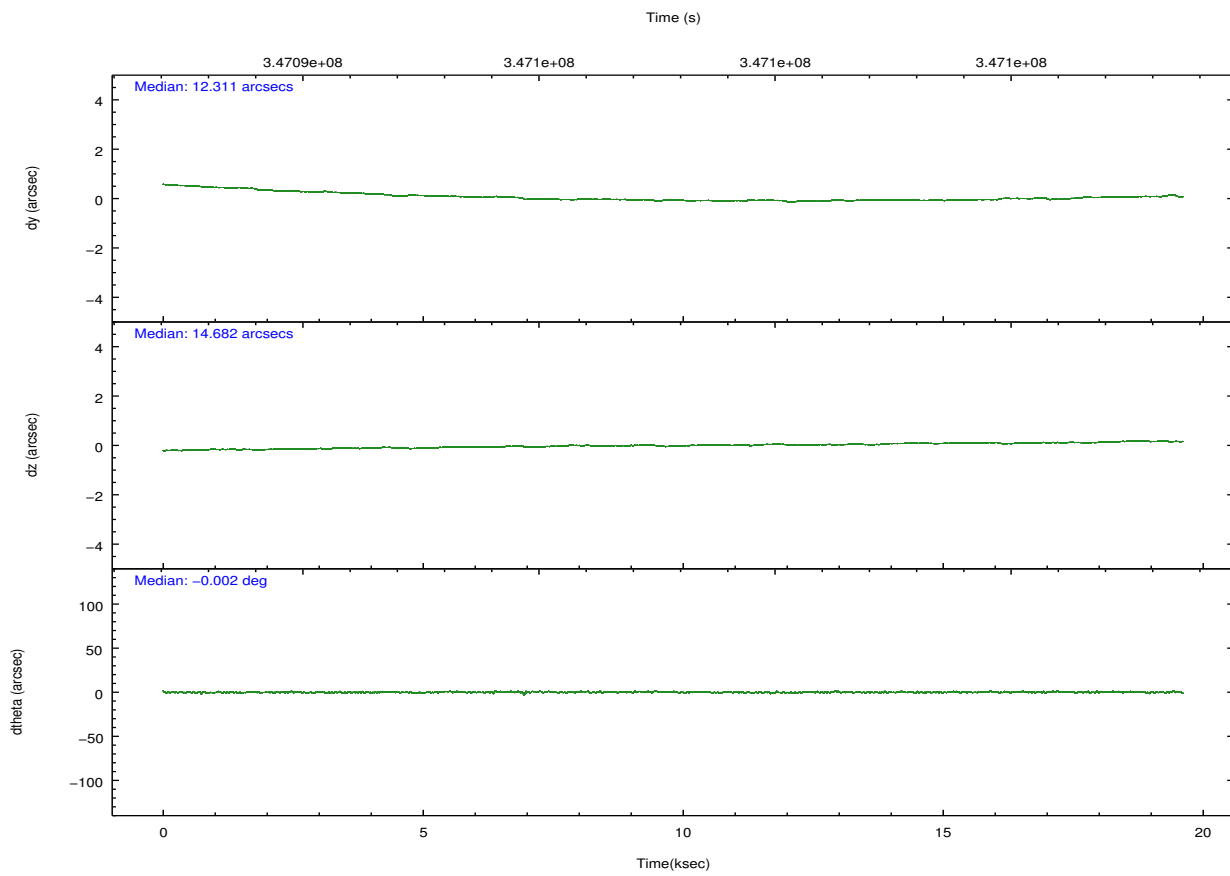
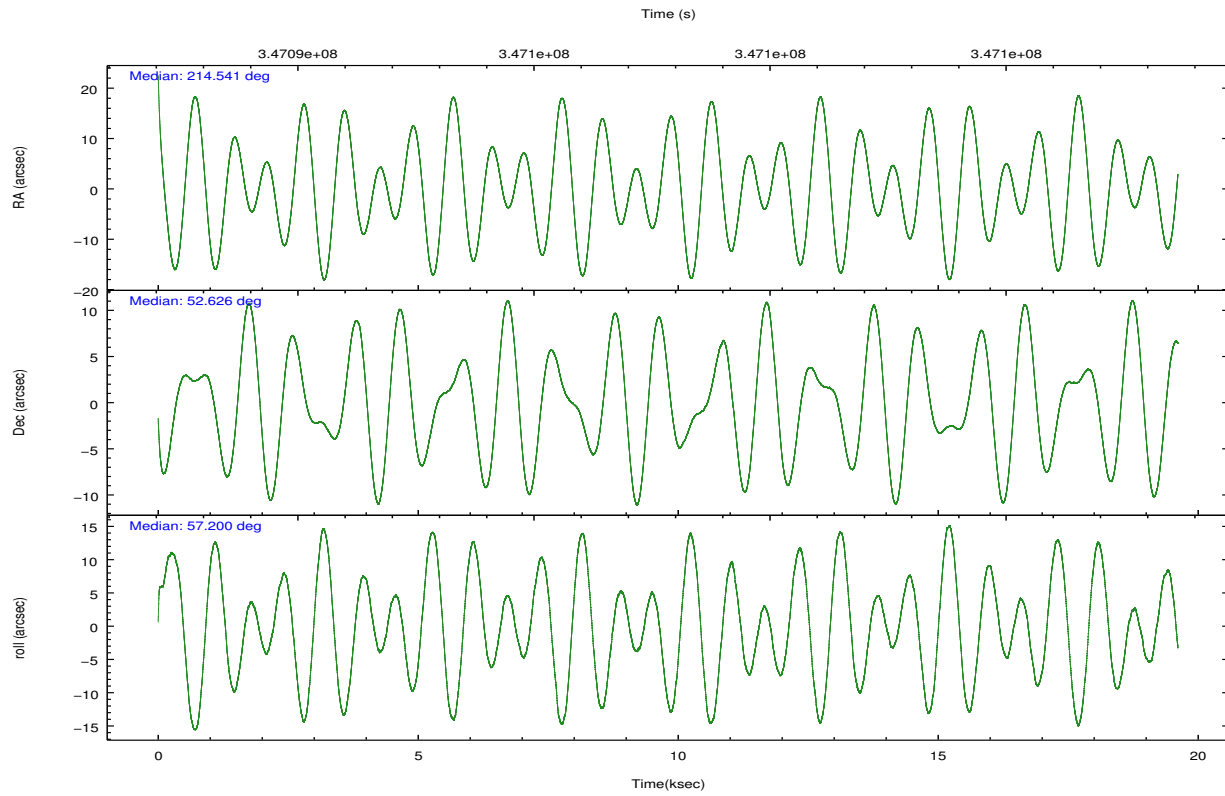
	ccd 0	ccd 1	ccd 2	ccd 3	ccd 6
grade 0 events	5617	6510	6340	5578	11623
	3%	4%	3%	3%	6%
grade 1 events	89	82	102	87	119
	0%	0%	0%	0%	0%
grade 2 events	3992	4135	3996	3509	3682
	2%	2%	2%	2%	2%
grade 3 events	1829	1928	1713	1745	1779
	1%	1%	1%	1%	1%
grade 4 events	1742	2062	1798	1711	1813
	1%	1%	1%	1%	1%
grade 5 events	5940	6327	5727	6770	6651
	3%	4%	3%	4%	3%
grade 6 events	3230	3728	3067	3276	3718
	2%	2%	1%	1%	2%
grade 7 events	128085	128891	144990	142547	138981
	85%	83%	86%	86%	82%

2.2 Compared Parameters

Parameter	Planned	Actual	Parameter	Planned	Actual
Instrument	ACIS	ACIS	Obspar format version number	7	7
Detector	ACIS-01236	ACIS-01236	Obspar file type	PREDICTED	ACTUAL
Grating	NONE	NONE	Obspar update status	NONE	UPDATED
Data mode	VFAINT	VFAINT	CCD I0 on	Y	Y
Observation mode	POINTING	POINTING	CCD I1 on	Y	Y
[deg] Pointing RA	214.539034	214.5410216011633	CCD I2 on	Y	Y
[deg] Pointing Dec	52.598195	52.62566278410311	CCD I3 on	Y	Y
[deg] Pointing Roll	56.998783	57.20589498478819	CCD S0 on	N	N
[deg] Roll angle	50.000000	50.000000	CCD S1 on	N	N
[deg] Roll tolerance	10.000000	10.000000	CCD S2 on	O1	Y
Roll constraint allows 180D rotation	Y	Y	CCD S3 on	N	N
[mm] SIM focus pos	-0.782348	-0.7809083437167272	CCD S4 on	N	N
[mm] SIM defocus	0	0.001439871863259334	CCD S5 on	N	N
[mm] SIM translation stage pos	-233.592463	-233.5874344608287	Number of optional ACIS chips dropped	0	0
[mm] SIM translation stage offset	0	-0.005018542100998502	On-chip summing requested	N	N
[s] Observation start time (MET)	347088182.184000	347087187.60682	Subarray requested	NONE	NONE
Observation start date	2008-12-31T05:21:57	2008-12-31T05:06:27	Alternating exposures requested	N	N
[s] Observation end time (MET)	347107642.184000	347108577.82038	[s] Primary exposure time	0.000000	3.1
Observation end date	2008-12-31T10:46:17	2008-12-31T11:02:57			
Read mode	TIMED	TIMED			

2.3 Aspect



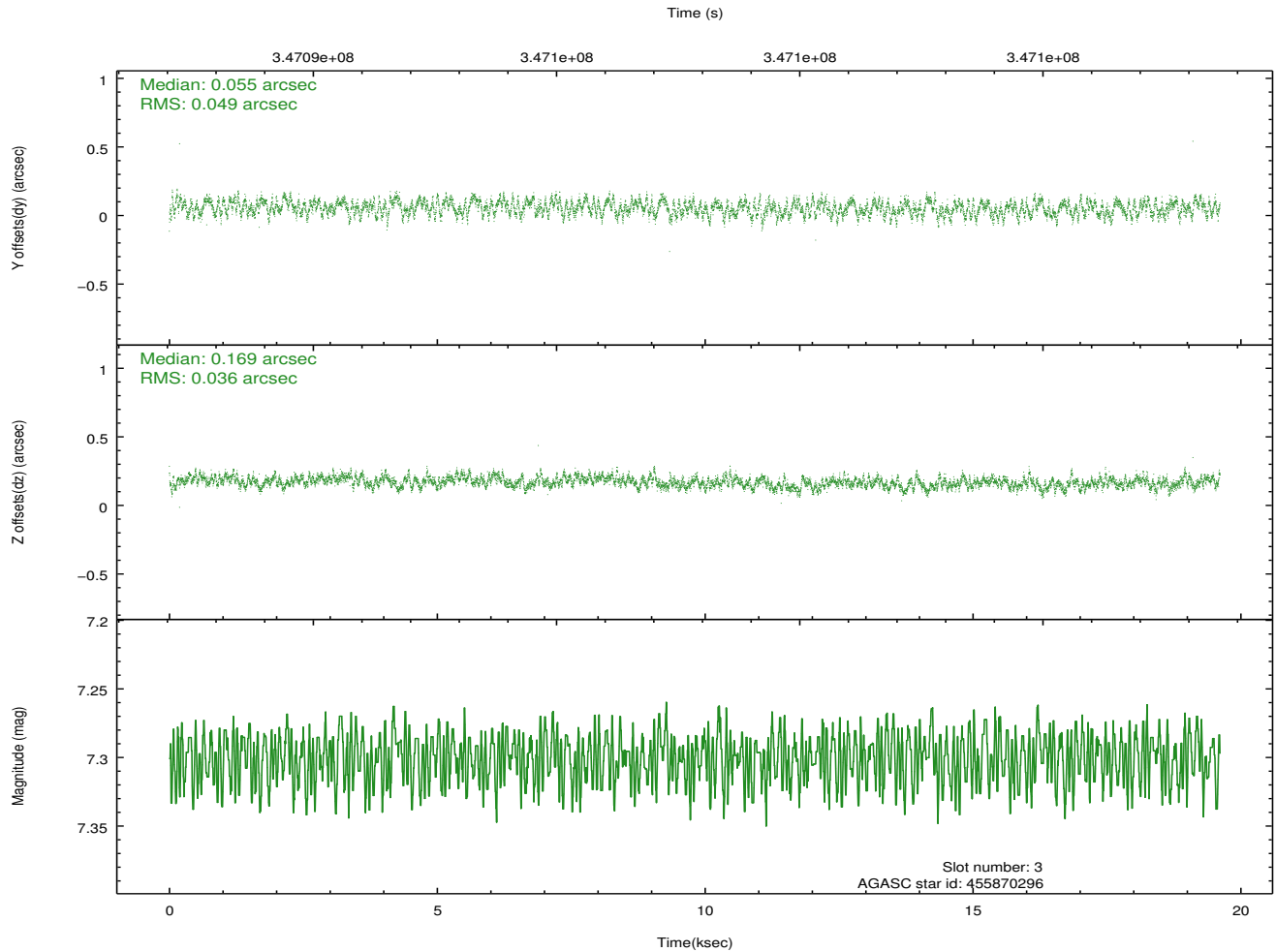
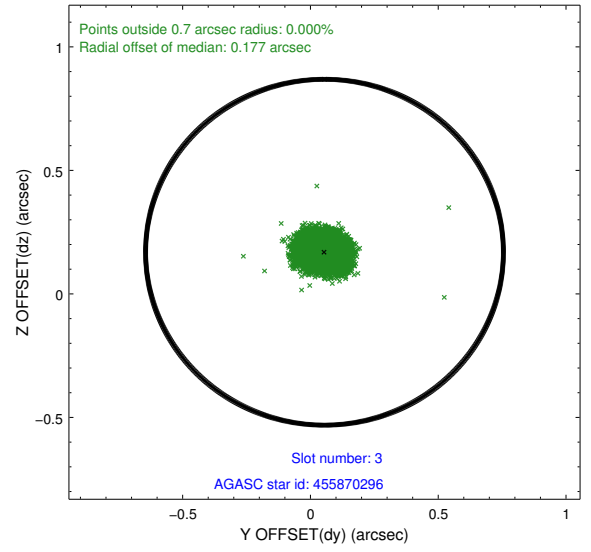
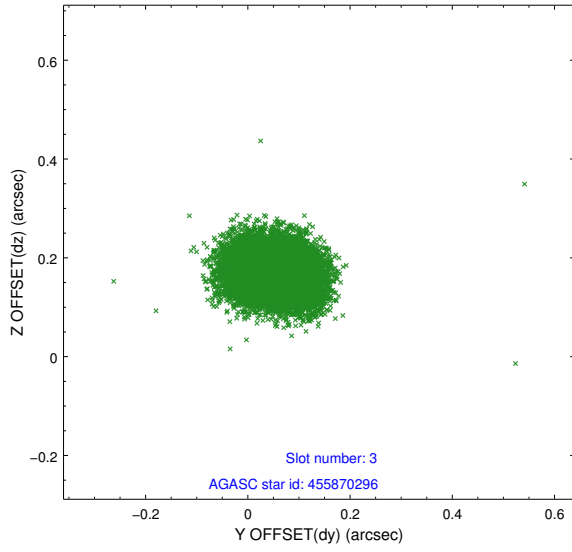


Slot Statistics

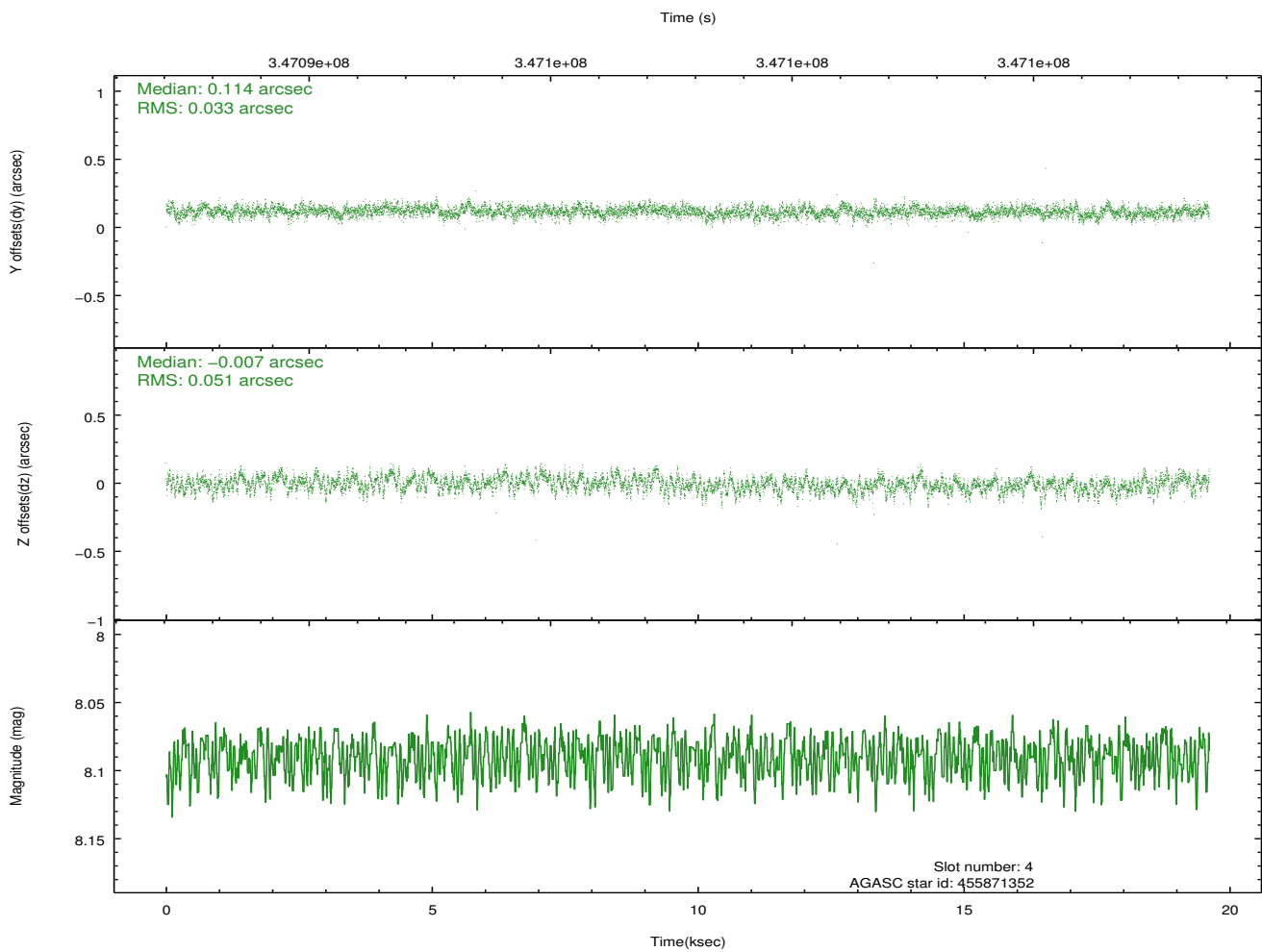
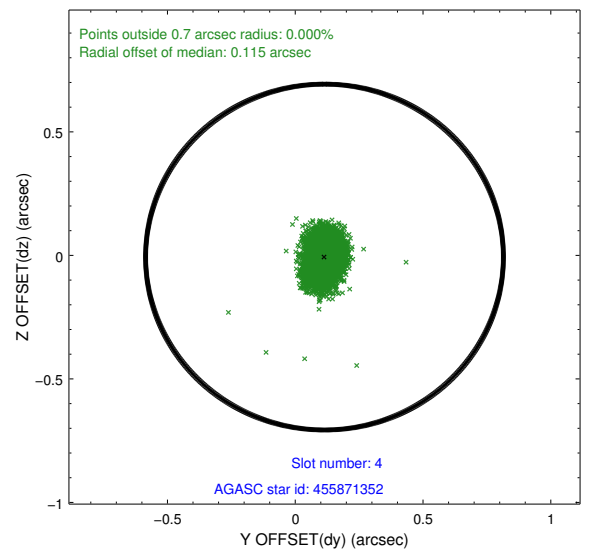
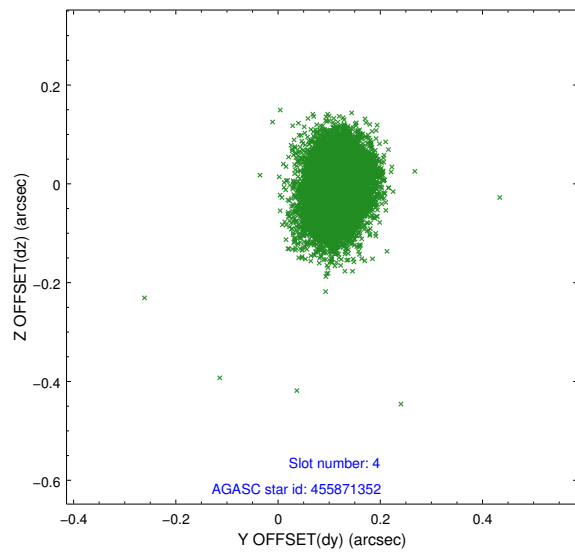
slot	status	id	mag	n_pts	med_dy	med_dz	dr1	dr2	ra	dec	mean_y	mean_z
0	FID	ACIS-I-1	7.03	4784	-0.026	0.022	0.015	0.022	0.000000	0.000000	927.13	-838.24
1	FID	ACIS-I-4	6.96	4783	0.157	0.021	0.012	0.021	0.000000	0.000000	2147.46	1061.47
2	FID	ACIS-I-5	7.01	4784	-0.231	0.028	0.012	0.021	0.000000	0.000000	-1820.83	1059.54
3	GUIDE	455870296	7.30	9567	0.055	0.169	0.065	0.103	214.629779	52.033323	-1595.53	-1276.01
4	GUIDE	455871352	8.09	9554	0.114	-0.007	0.064	0.107	215.099961	52.172669	-605.88	-1870.48
5	GUIDE	505806936	7.00	9568	0.038	-0.000	0.076	0.139	213.820815	52.535927	-1037.99	1200.91
6	GUIDE	505812376	7.52	9568	-0.231	0.042	0.048	0.077	214.039537	52.937930	438.28	1577.37
7	GUIDE	505812088	8.14	9561	0.015	-0.200	0.056	0.090	214.186617	53.263562	1597.16	1942.34

2.4 Star Slots

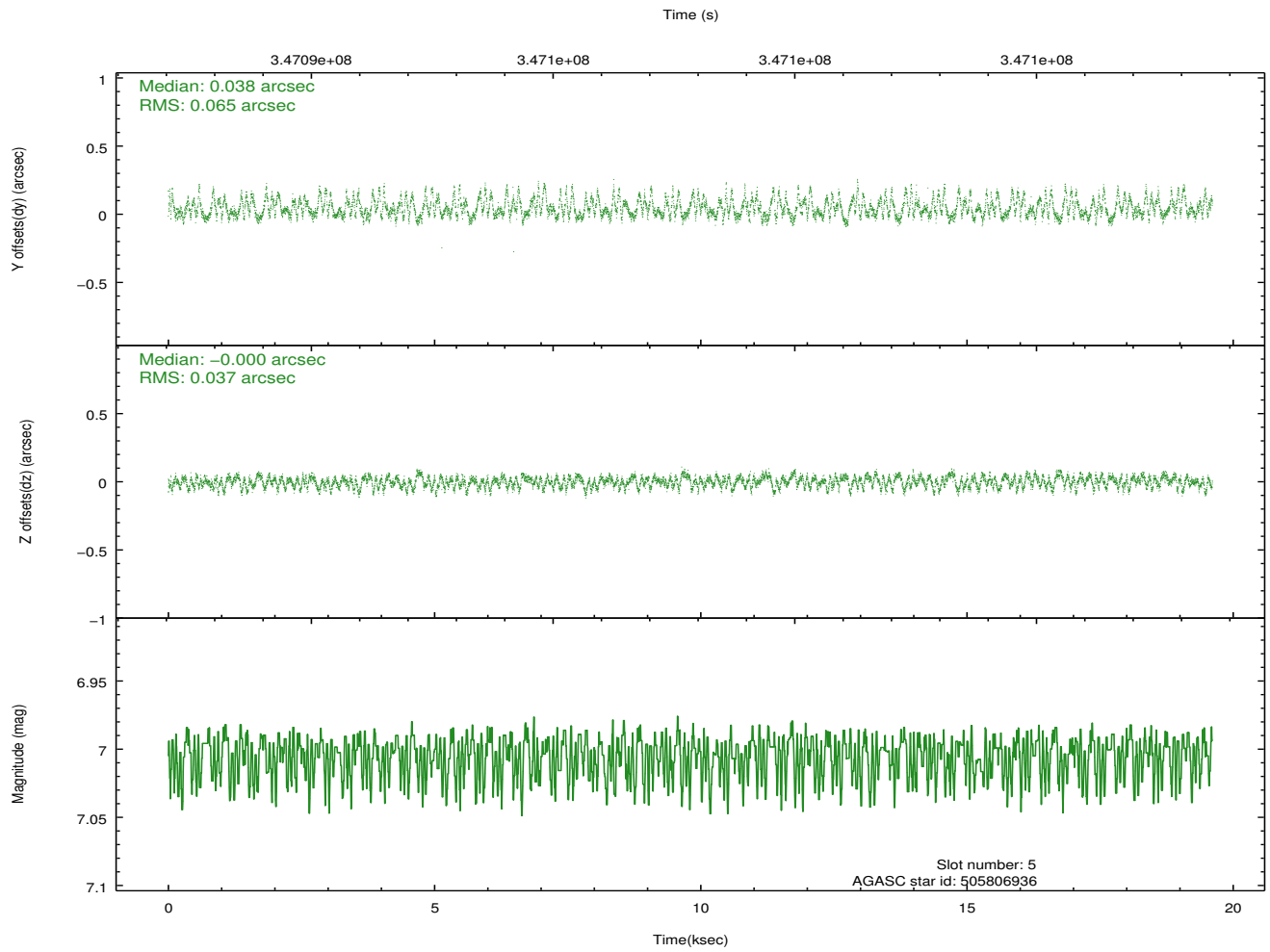
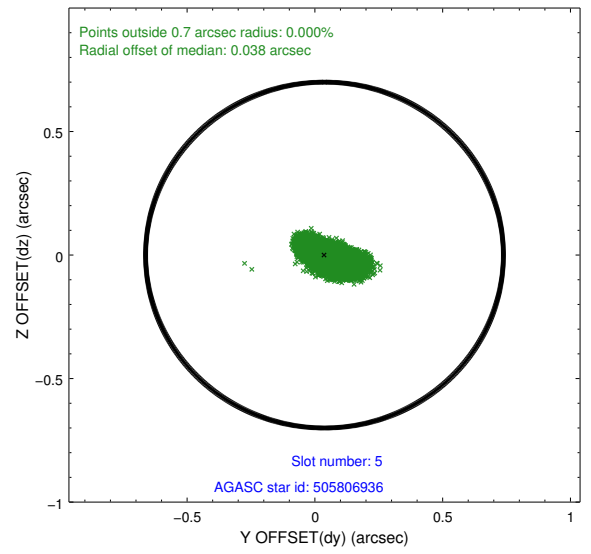
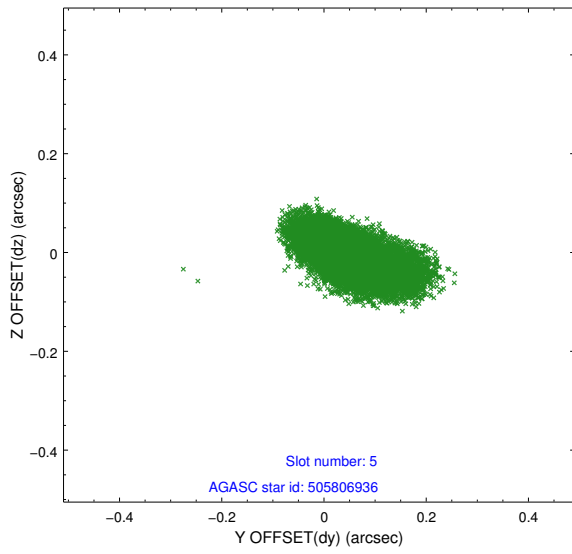
2.4.1 Slot 3



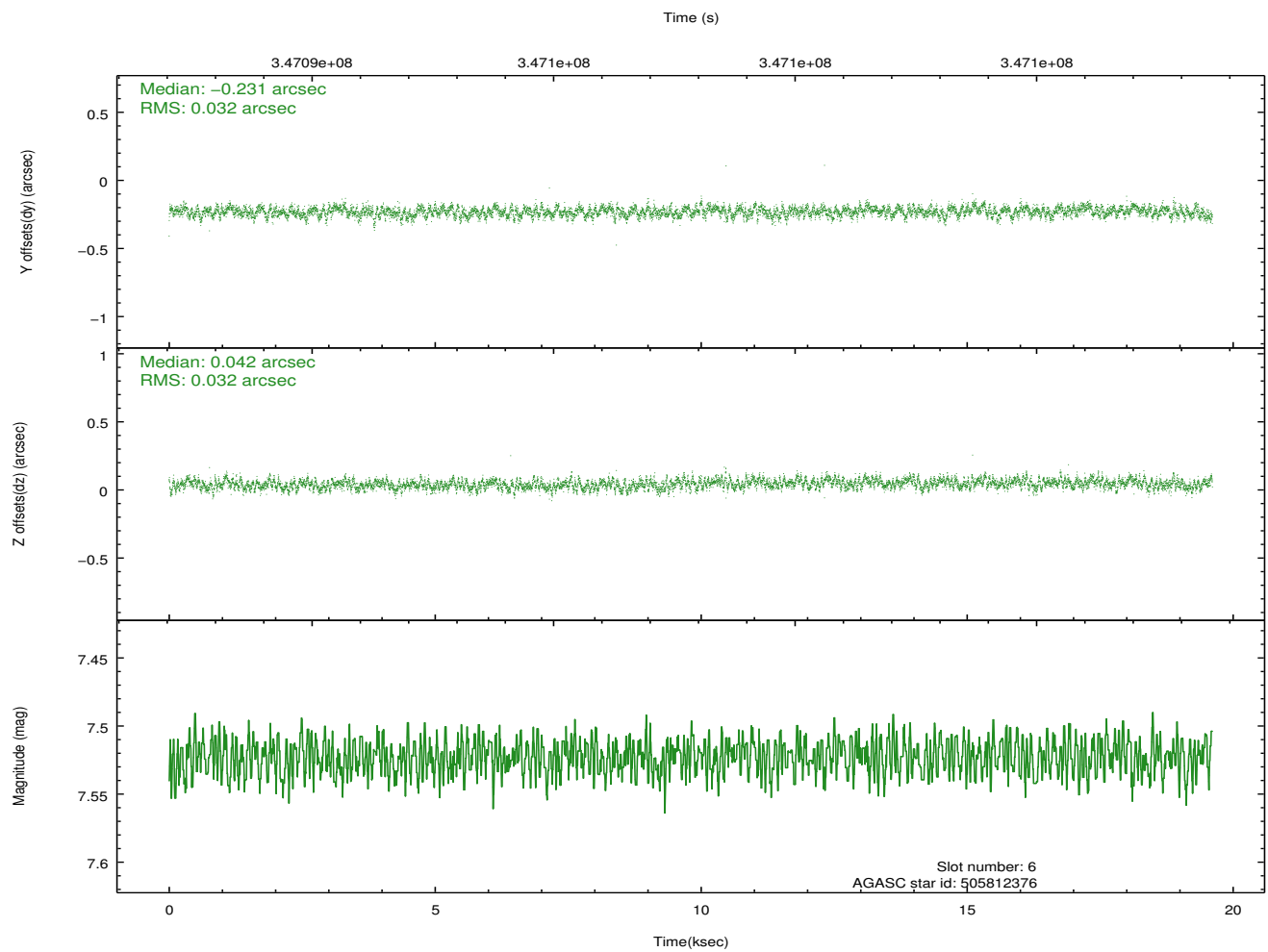
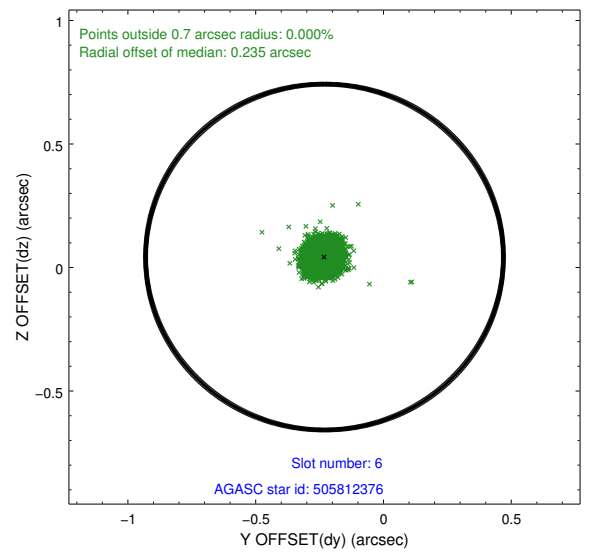
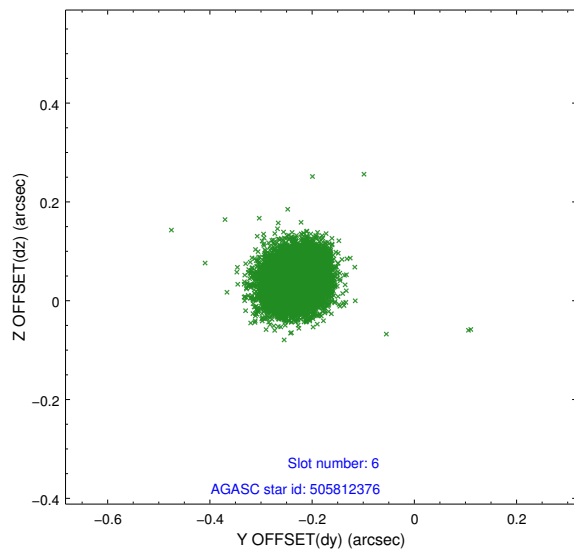
2.4.2 Slot 4



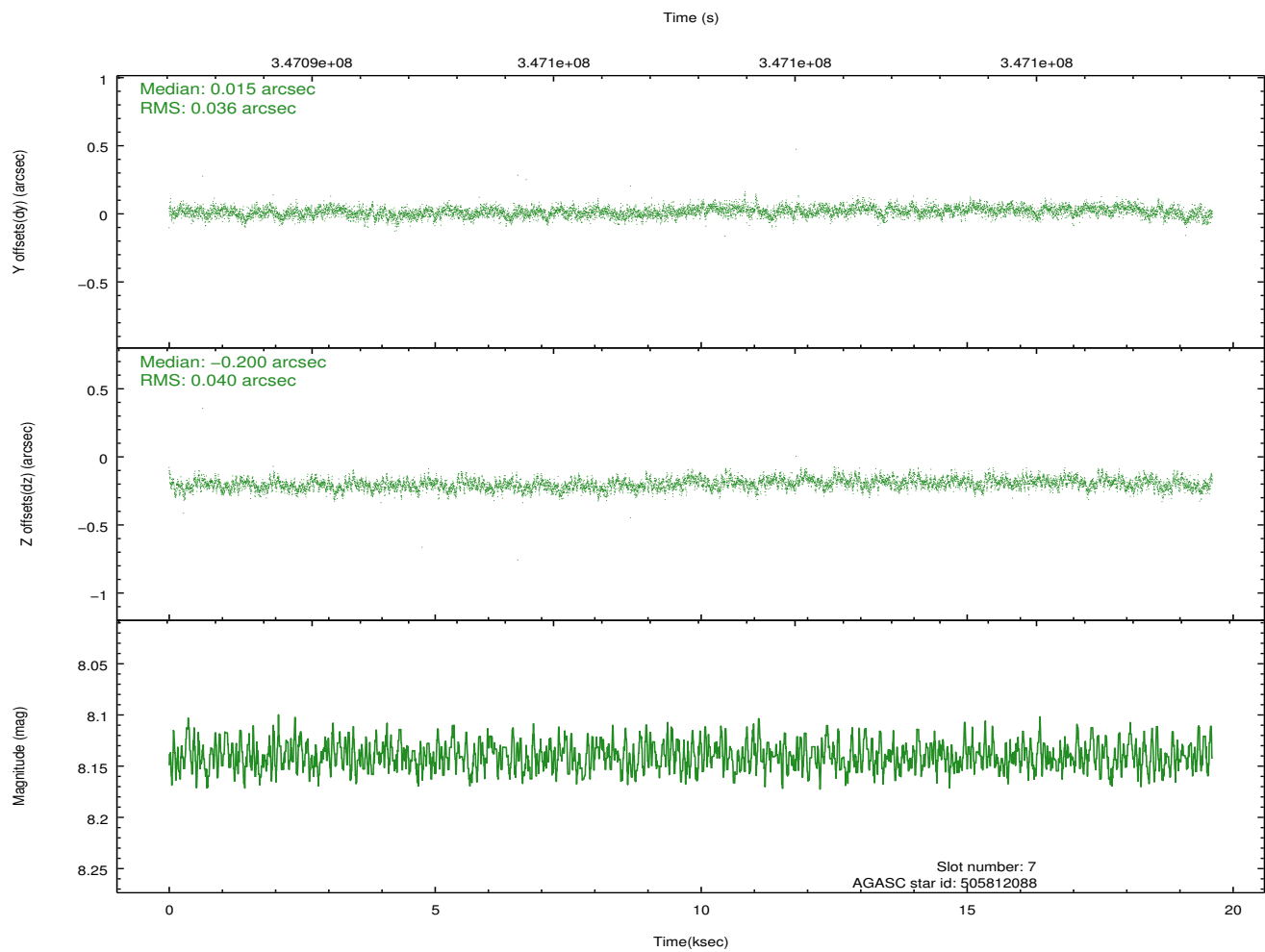
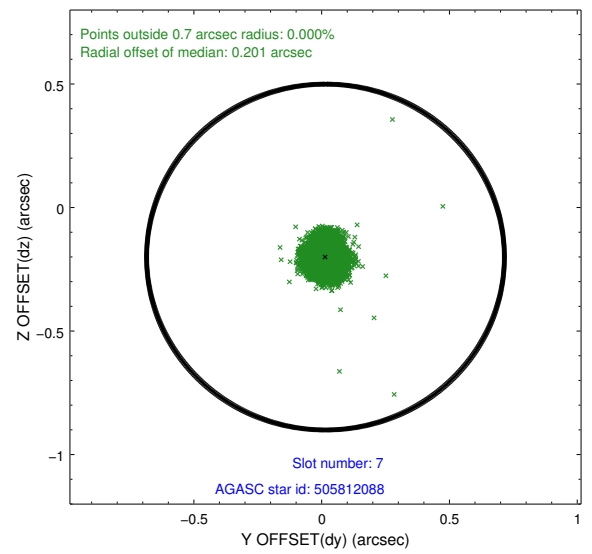
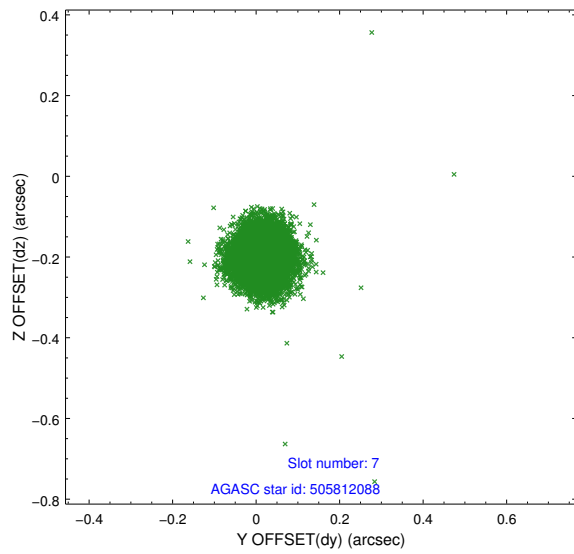
2.4.3 Slot 5



2.4.4 Slot 6

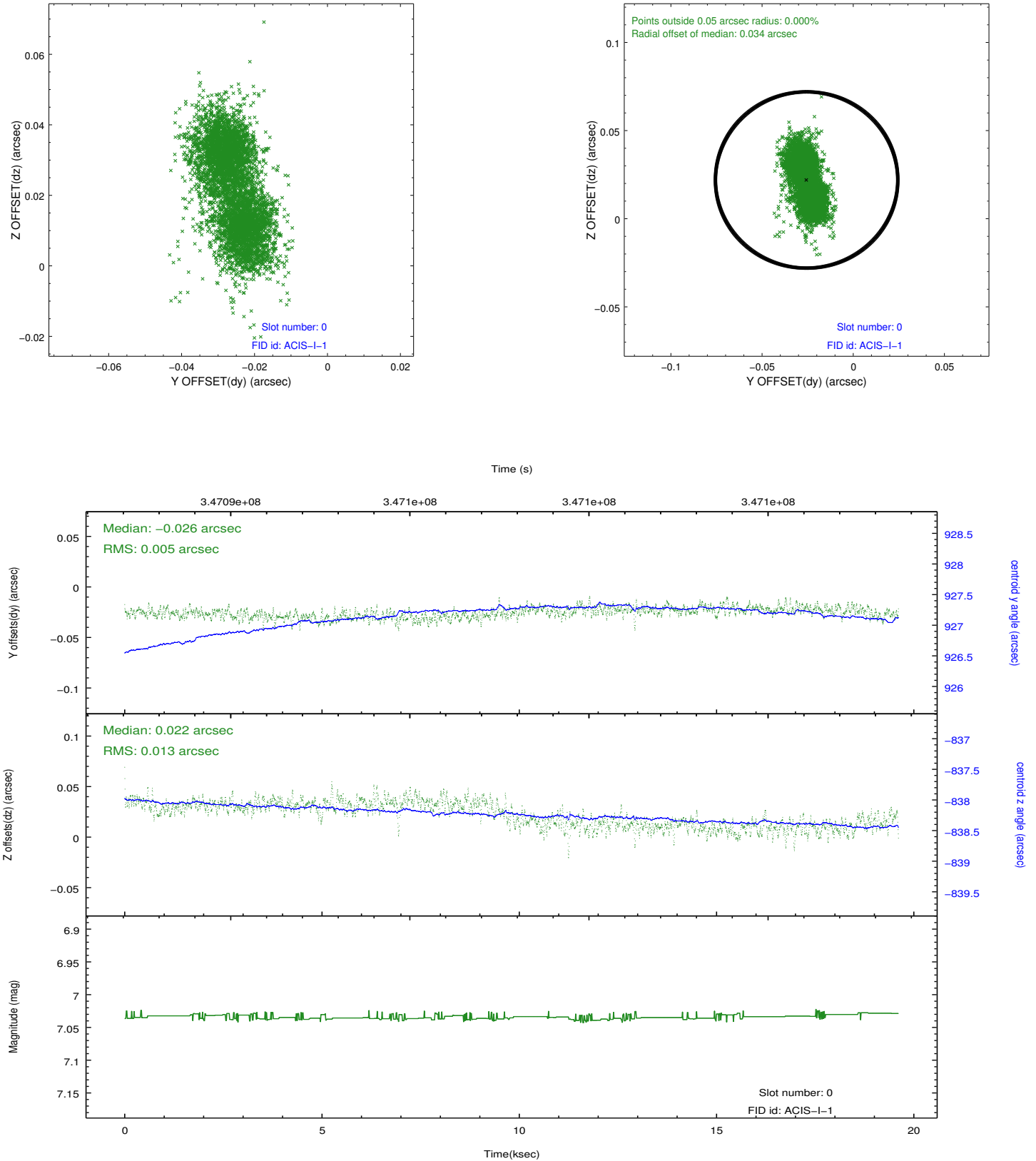


2.4.5 Slot 7

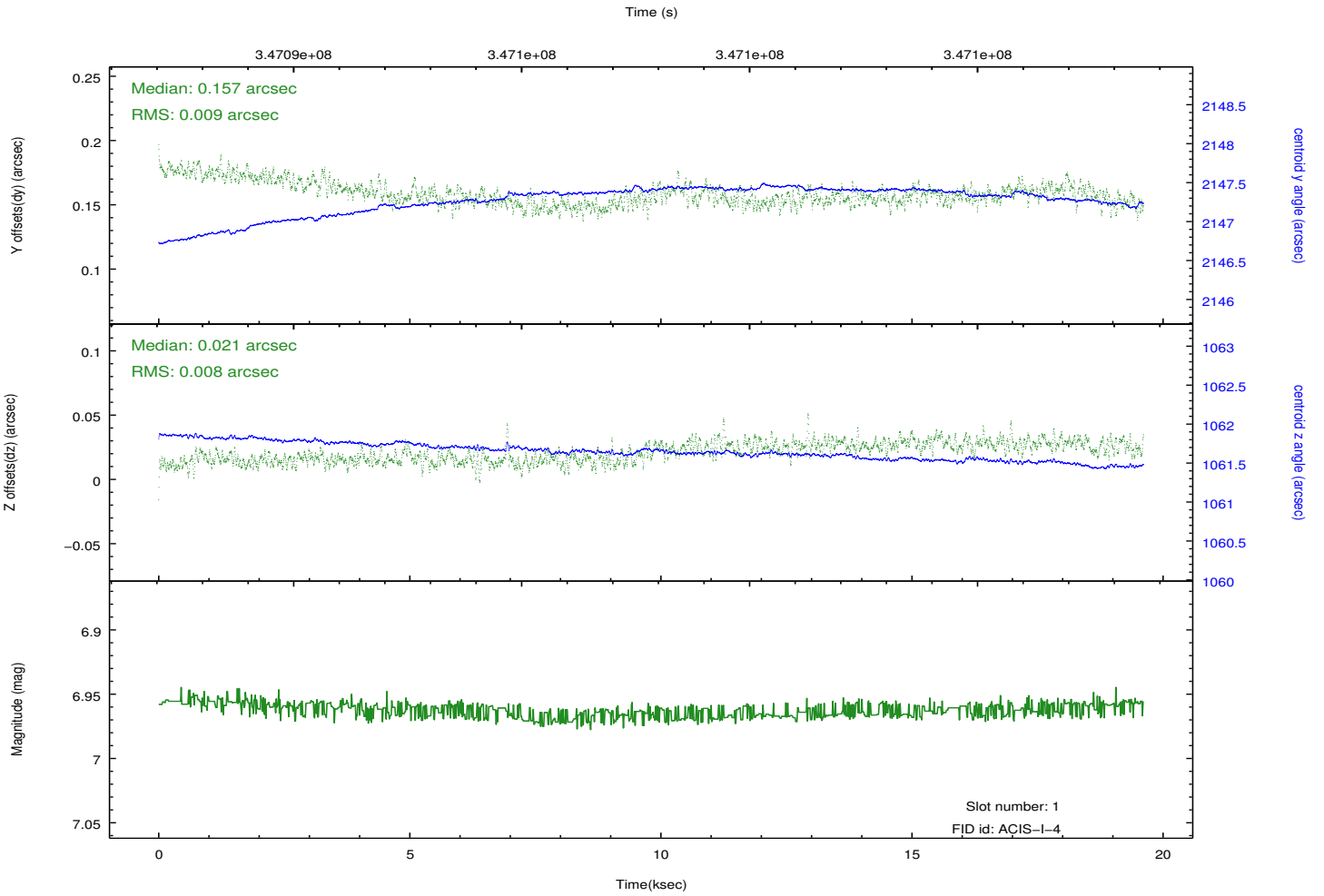
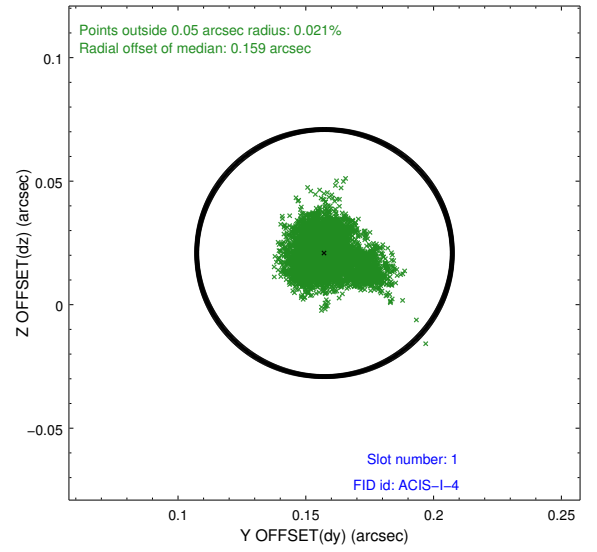
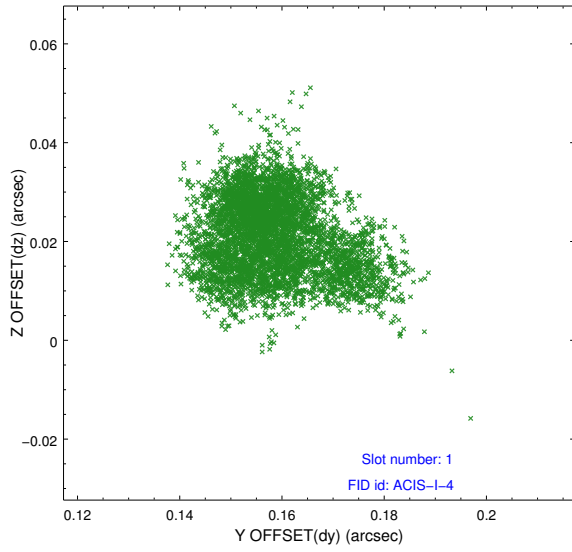


2.5 FID Slots

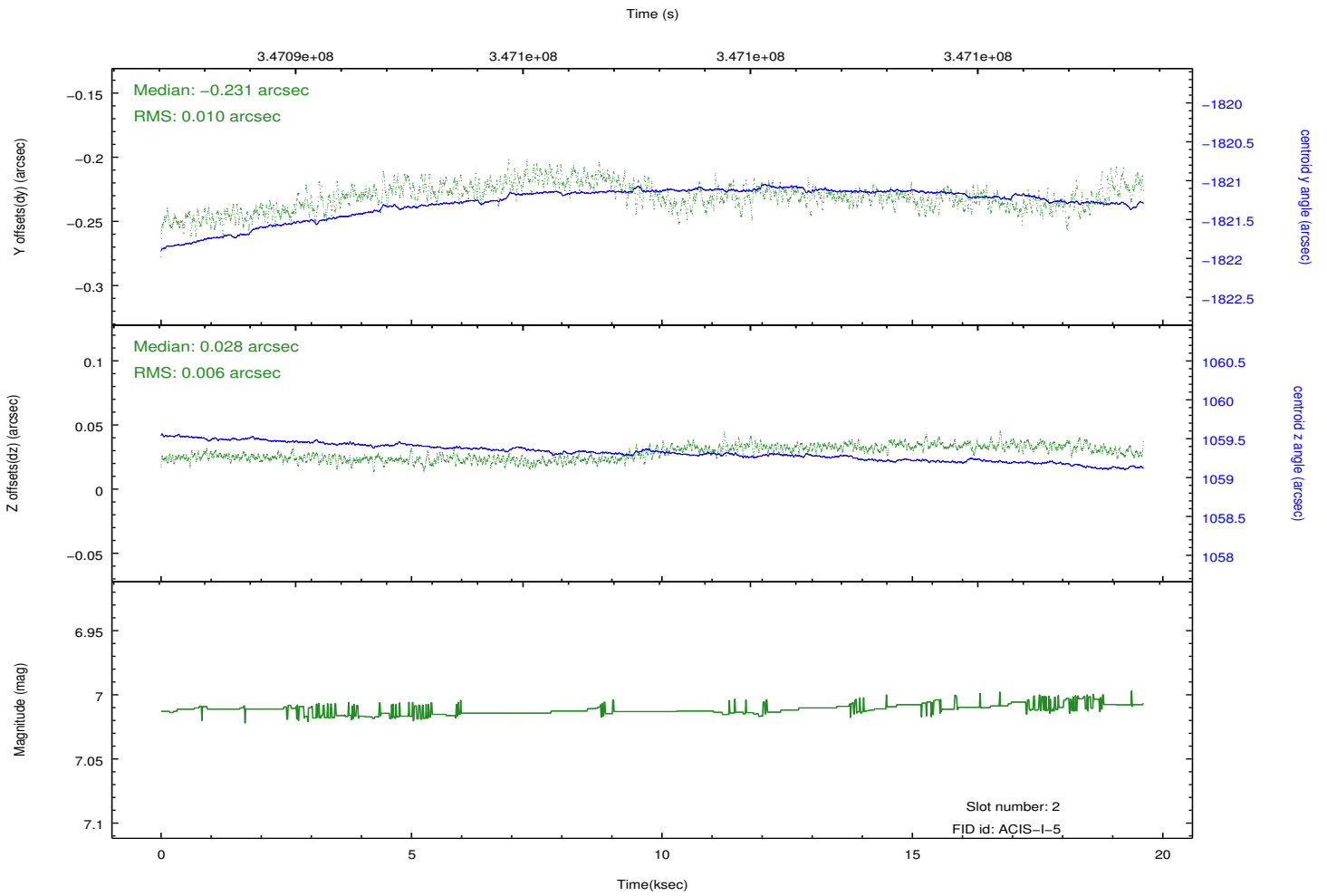
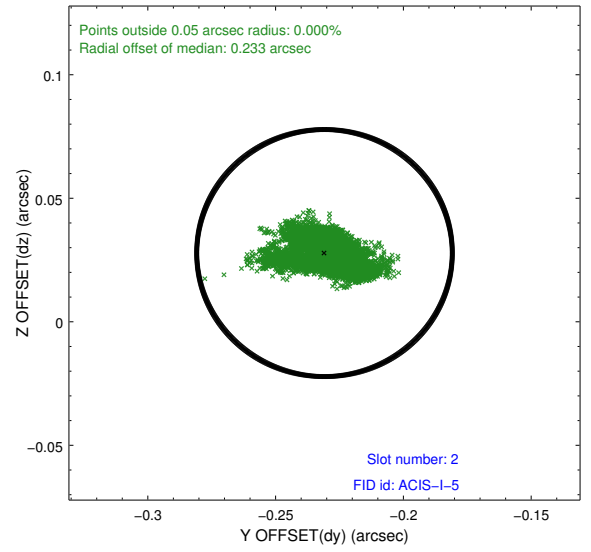
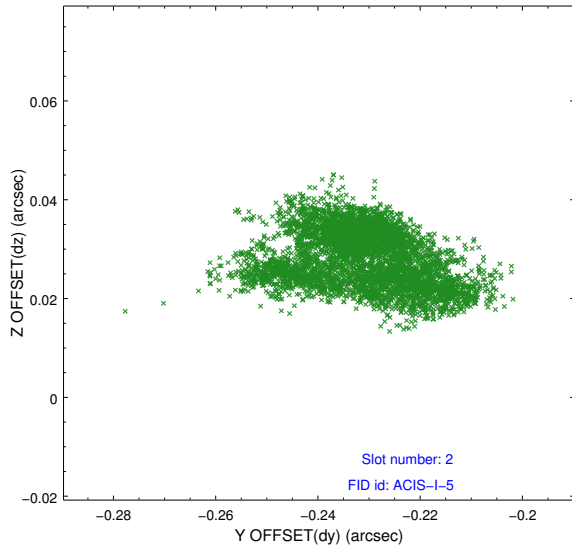
2.5.1 Slot 0



2.5.2 Slot 1



2.5.3 Slot 2



A Summary

A.1 Status

V&V Scientist	Jen Lauer
V&V Date (YYYY-MM-DD)	2012.06.27
V&V Edition	1
V&V Disposition and Status	OK
V&V Charge Time	19.5238001

A.2 Comments

Joint Proposal: Spitzer. Roll constraint met.

=====

A spatial region of the original bias map for CCD = 3 suffered from anomalously high data values. Pixels in the event data that were bias-corrected by one of the original affected bias pixels may have an apparent energy shift. While the change in energy is expected to be small (~ 20 eV), it depends on many parameters that have not yet been fully explored for this bias anomaly. The bias map for CCD = 3 has been reconstructed for this processing to remove this anomaly using scaled data from a comparable bias map from another observation. The pixels affected by the anomaly are bounded by sky coords:
(214.34944, 52.53539), (214.35434, 52.53347), (214.40518, 52.58167), (214.39870, 52.58210)