

# V&V Reference Report

## L2 ASCDS Version : 8.4.5

Observation 10937 - L2 Version 2  
Chandra X-Ray Center

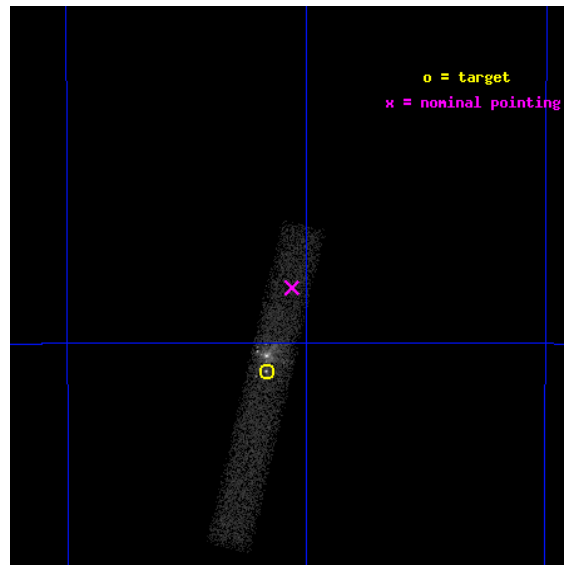
L2 Processing Date : Jun 18 2012

## Contents

<b>1</b>	<b>Front</b>	<b>2</b>
<b>2</b>	<b>OBI</b>	<b>3</b>
2.1	OBI . . . . .	3
2.1.1	Images . . . . .	3
2.1.2	Bias . . . . .	3
2.1.3	Parameters . . . . .	4
2.1.4	Events . . . . .	4
2.2	Compared Parameters . . . . .	5
2.3	Aspect . . . . .	6
2.4	Star Slots . . . . .	9
2.4.1	Slot 3 . . . . .	9
2.4.2	Slot 4 . . . . .	10
2.4.3	Slot 5 . . . . .	11
2.4.4	Slot 6 . . . . .	12
2.4.5	Slot 7 . . . . .	13
2.5	FID Slots . . . . .	14
2.5.1	Slot 0 . . . . .	14
2.5.2	Slot 1 . . . . .	15
2.5.3	Slot 2 . . . . .	16
<b>A</b>	<b>Summary</b>	<b>17</b>
A.1	Status . . . . .	17
A.2	Comments . . . . .	17

# 1 Front

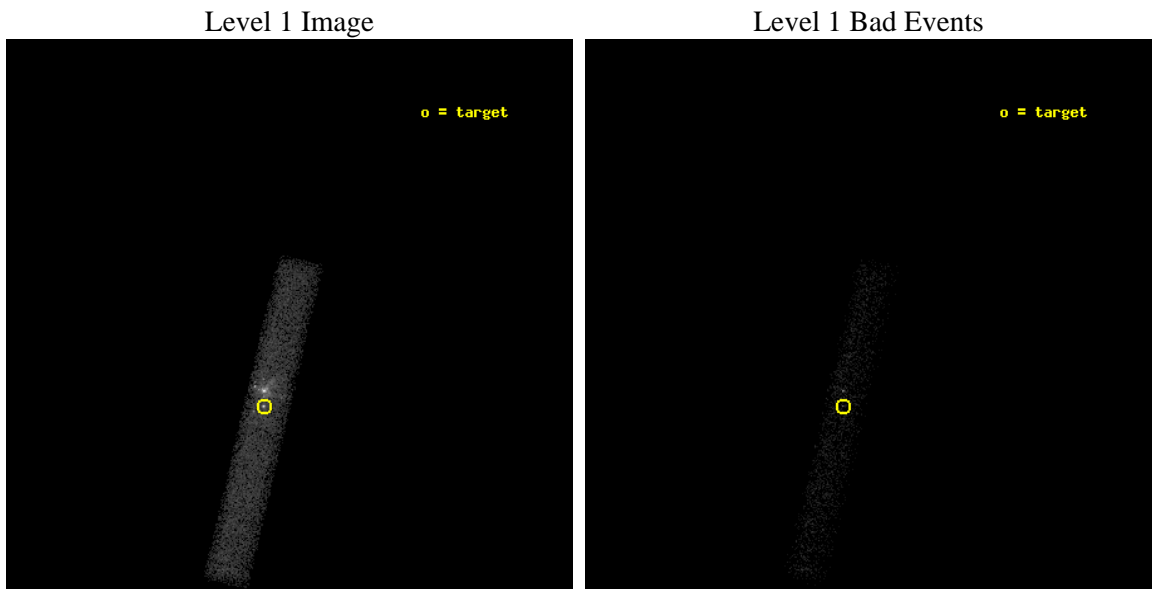
seq_num	501177	Sequence number
obs_id	10937	Observation id
title	Tracking the X-ray Evolution of the Enigmatic SN1996cr	Proposal ti
observer	Dr. Franz Bauer	Principal investigator
object	SN1996cr	Source name
dtycle	0	&#160
cycle	P	events from which exps? Prim/Second/Both
ra_targ	213.291667	Observer's specified target RA [deg]
dec_targ	-65.345694	Observer's specified target Dec [deg]
ra_nom	213.26521392936	Nominal RA [deg]
dec_nom	-65.30982834382	Nominal Dec [deg]
roll_nom	103.35088556881	Nominal Roll [deg]
revision	2	Processing version of data
ontime	20187.598796725	Sum of GTIs [s]
livetime	18309.086519794	Livetime [s]
ontime7	20187.598796725	Sum of GTIs [s]
l2events	23568	Number of level 2 events



## 2 OBI

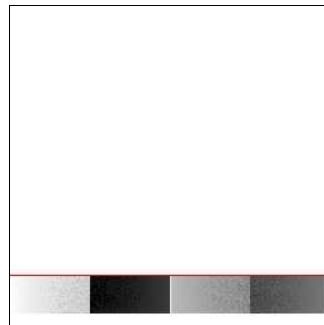
### 2.1 OBI

#### 2.1.1 Images



#### 2.1.2 Bias

Chip 7



### 2.1.3 Parameters

obi_num	0	Obi number	sched_exp_time	20000.000000	[s] Scheduled observation exposure time
ascdsver	8.4.5	Processing system revision	ontime	20187.598796725	Sum of GTIs [s]
caldbver	4.4.10	&#160	ontime7	20187.598796725	Sum of GTIs [s]
date	2012-06-18T19:25:59	Date and time of file creation	l1events	33799	Number of level 1 events
revision	2	Processing version of data			

### 2.1.4 Events

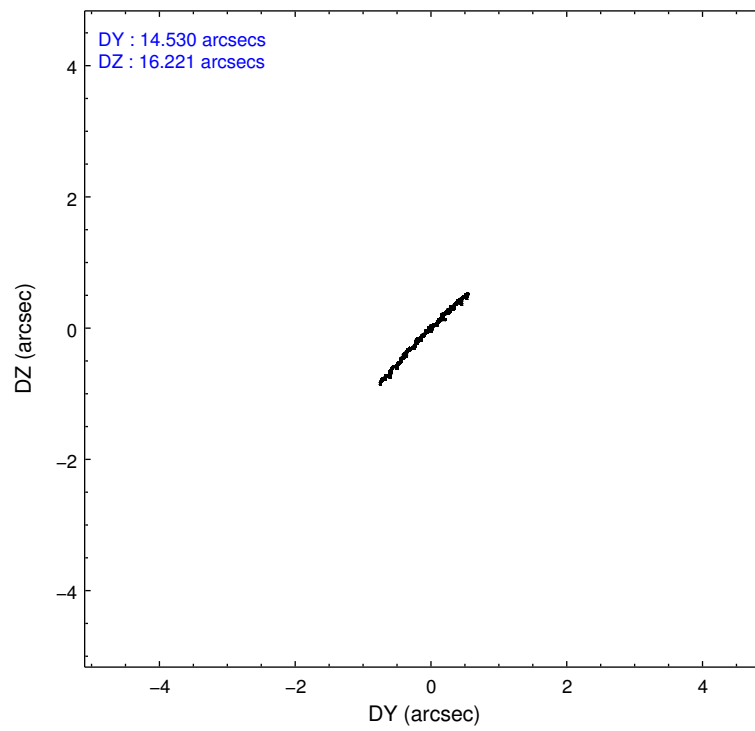
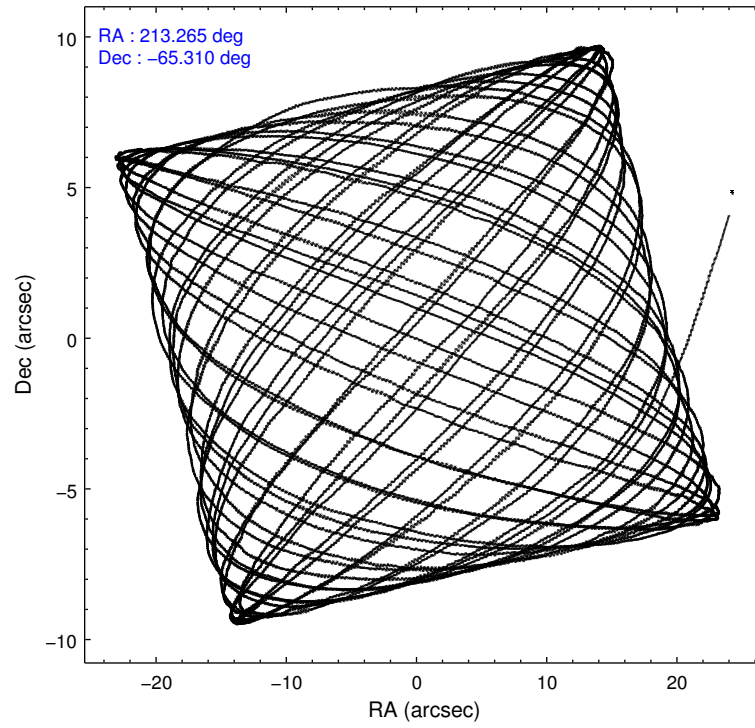
	<b>ccd 7</b>
level 1 events	33799
rejected events	9807
rejected %	29%

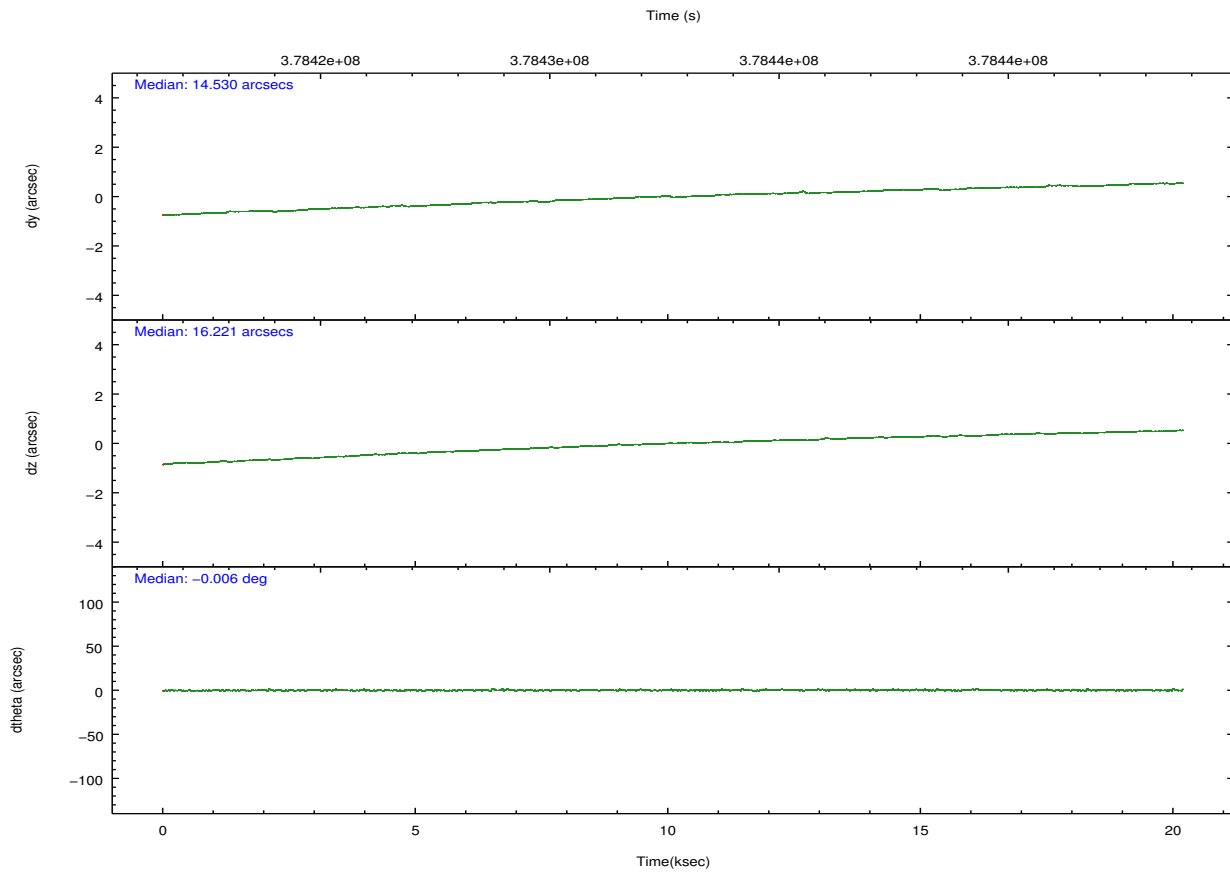
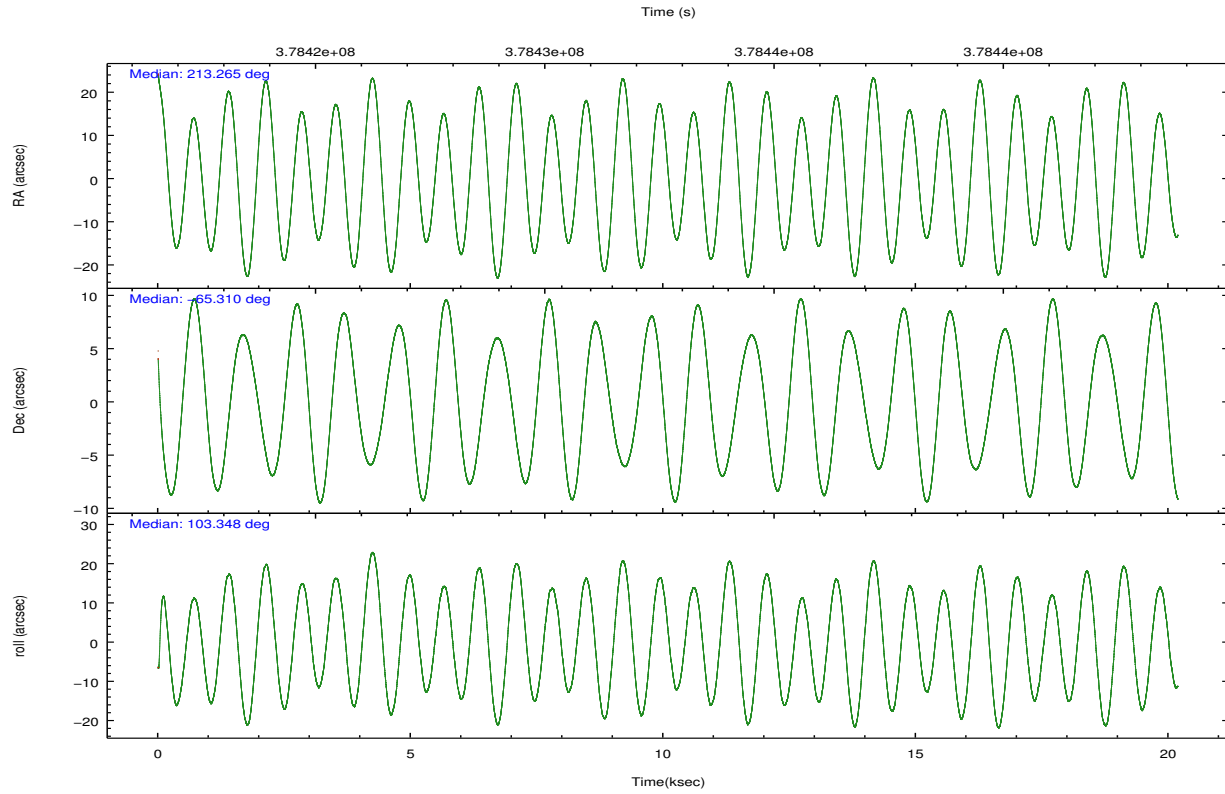
	<b>ccd 7</b>
grade 0 events	4258
	12%
grade 1 events	71
	0%
grade 2 events	5371
	15%
grade 3 events	3149
	9%
grade 4 events	2996
	8%
grade 5 events	2081
	6%
grade 6 events	8555
	25%
grade 7 events	7318
	21%

## 2.2 Compared Parameters

Parameter	Planned	Actual	Parameter	Planned	Actual
Instrument	ACIS	ACIS	Obspar format version number	7	7
Detector	ACIS-7	ACIS-7	Obspar file type	PREDICTED	ACTUAL
Grating	NONE	NONE	Obspar update status	NONE	UPDATED
Data mode	VFAINT	VFAINT	Number of optional ACIS chips dropped	0	0
Observation mode	POINTING	POINTING	On-chip summing requested	N	N
[deg] Pointing RA	213.310824	213.2652139293572	Subarray requested	CUSTOM	CUSTOM
[deg] Pointing Dec	-65.329421	-65.30982834381958	Subarray start row	44	44
[deg] Pointing Roll	103.235723	103.3508855688054	Subarray row count	120	120
[mm] SIM focus pos	-0.684267	-0.6828225247311905	Alternating exposures requested	N	N
[mm] SIM defocus	0	0.001444936568705701	[s] Primary exposure time	0.000000	0.4
[mm] SIM translation stage pos	-180.480023	-180.4876096071831			
[mm] SIM translation stage offset	-9.6525	-9.644912975824752			
[s] Observation start time (MET)	378422791.184000	378421892.73558			
Observation start date	2009-12-28T21:25:25	2009-12-28T21:11:32			
[s] Observation end time (MET)	378442791.184000	378443749.83669			
Observation end date	2009-12-29T02:58:45	2009-12-29T03:15:49			
Read mode	TIMED	TIMED			

## 2.3 Aspect



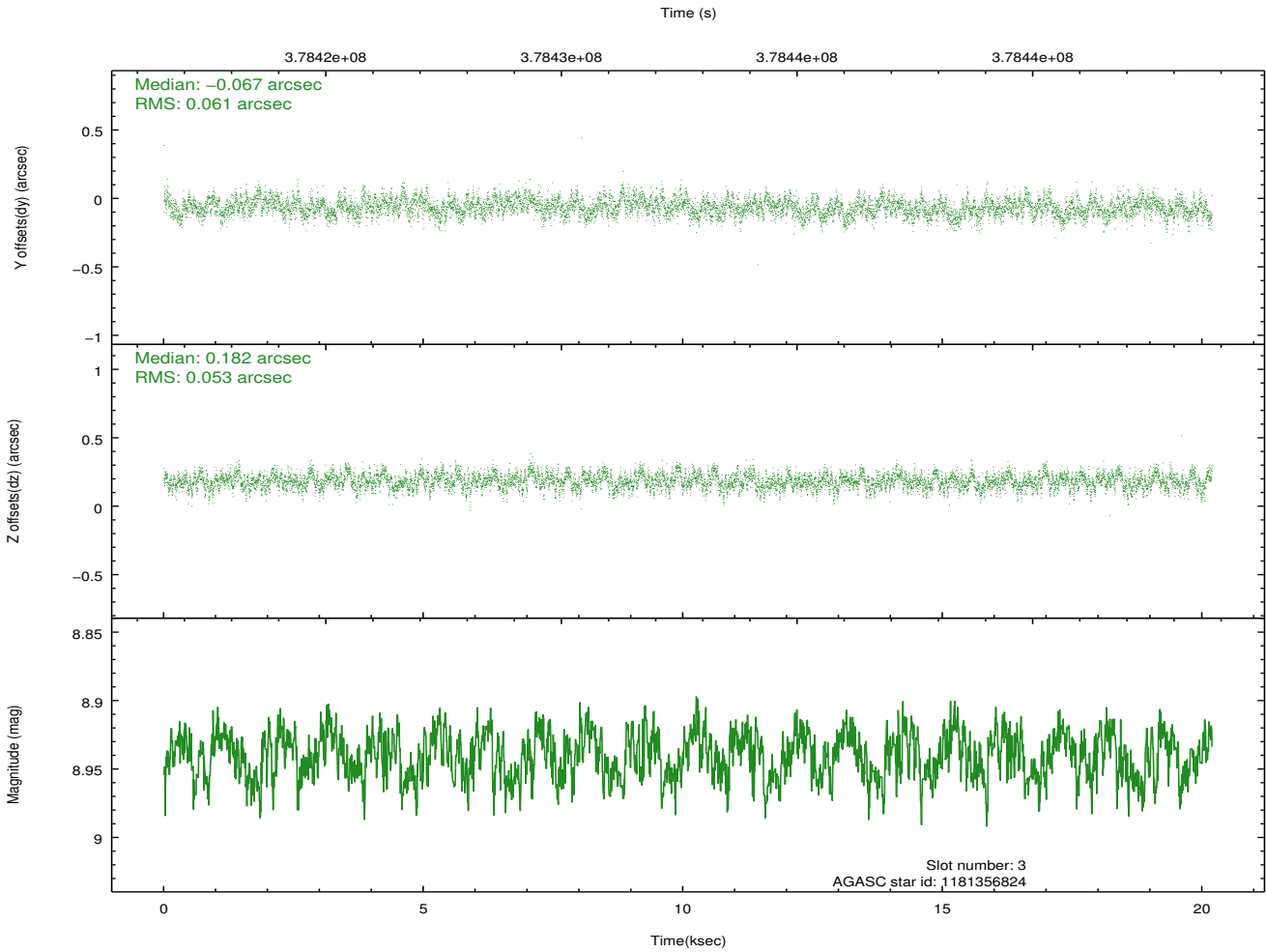
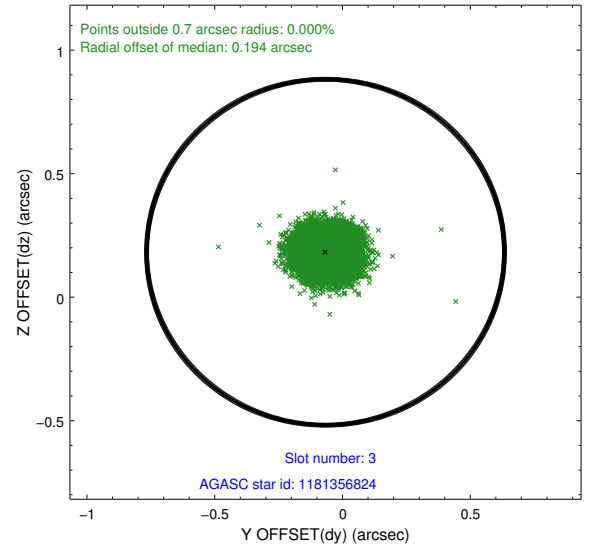
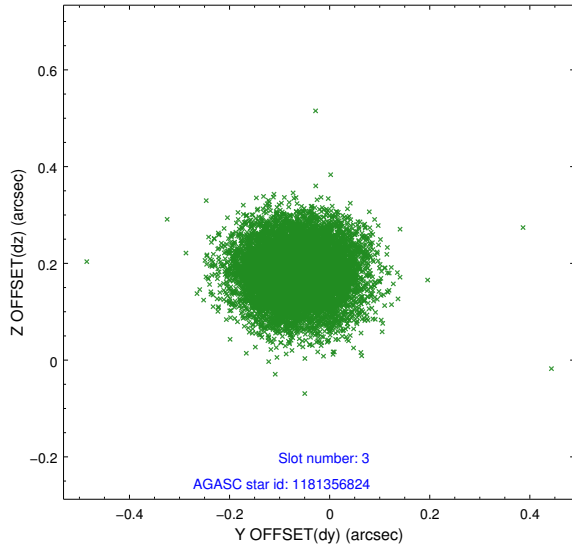


### Slot Statistics

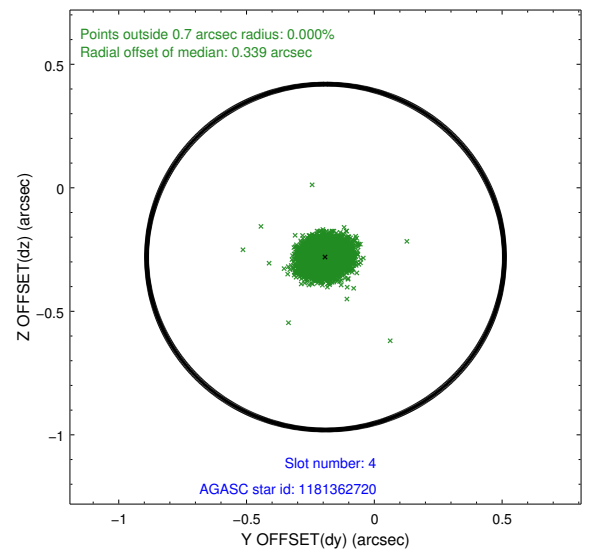
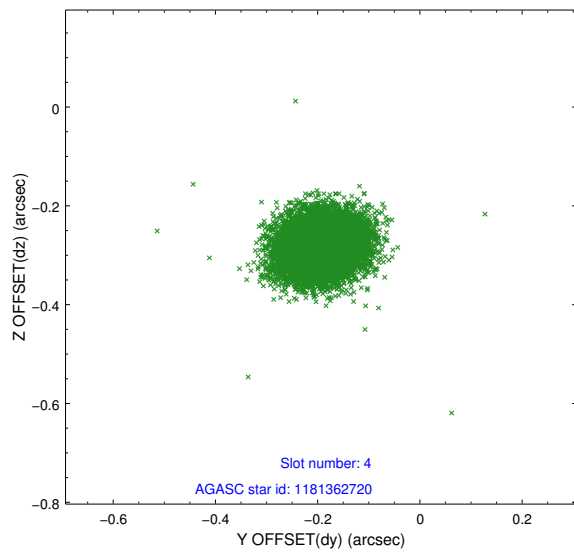
slot	status	id	mag	n_pts	med_dy	med_dz	dr1	dr2	ra	dec	mean_y	mean_z
0	FID	ACIS-S-1	6.92	4925	0.088	0.153	0.014	0.020	0.000000	0.000000	929.42	-1931.64
1	FID	ACIS-S-2	6.84	4925	-0.183	-0.110	0.026	0.038	0.000000	0.000000	-766.65	-1936.72
2	FID	ACIS-S-6	7.14	4924	0.074	-0.040	0.016	0.026	0.000000	0.000000	394.94	609.24
3	GUIDE	1181356824	8.94	9834	-0.067	0.182	0.087	0.139	213.100076	-64.682630	2340.66	-216.59
4	GUIDE	1181362720	8.22	9837	-0.191	-0.280	0.058	0.094	212.359703	-64.776136	2262.68	966.98
5	GUIDE	1181492072	9.21	9834	0.073	0.067	0.091	0.146	214.479575	-65.592809	-1336.04	-1471.19
6	GUIDE	1181492872	9.09	9842	0.044	0.120	0.123	0.184	214.965330	-65.517798	-1256.49	-2239.50
7	GUIDE	1181888328	9.13	9839	0.144	-0.089	0.080	0.131	213.100875	-66.006078	-2301.10	857.03

## 2.4 Star Slots

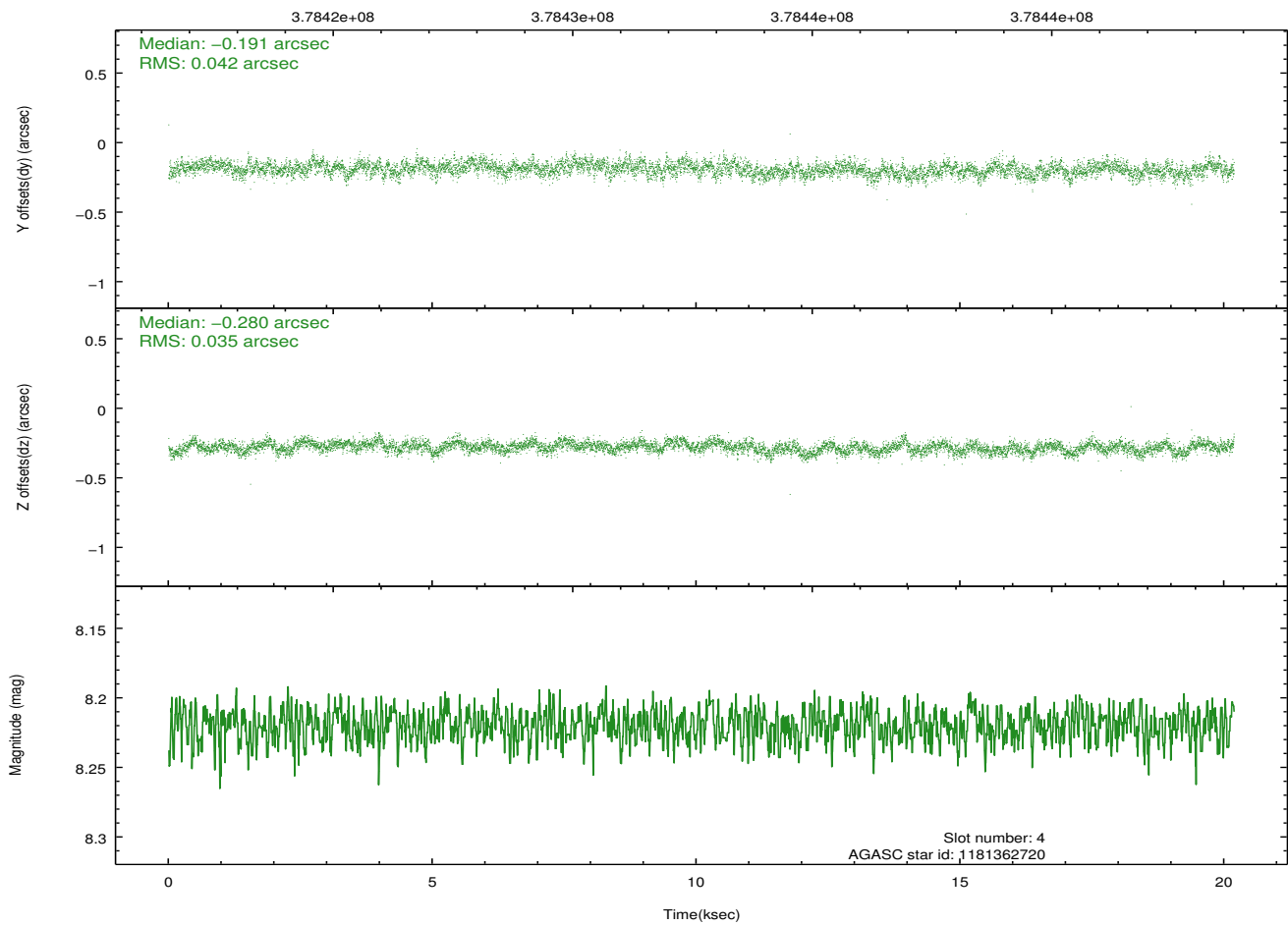
### 2.4.1 Slot 3



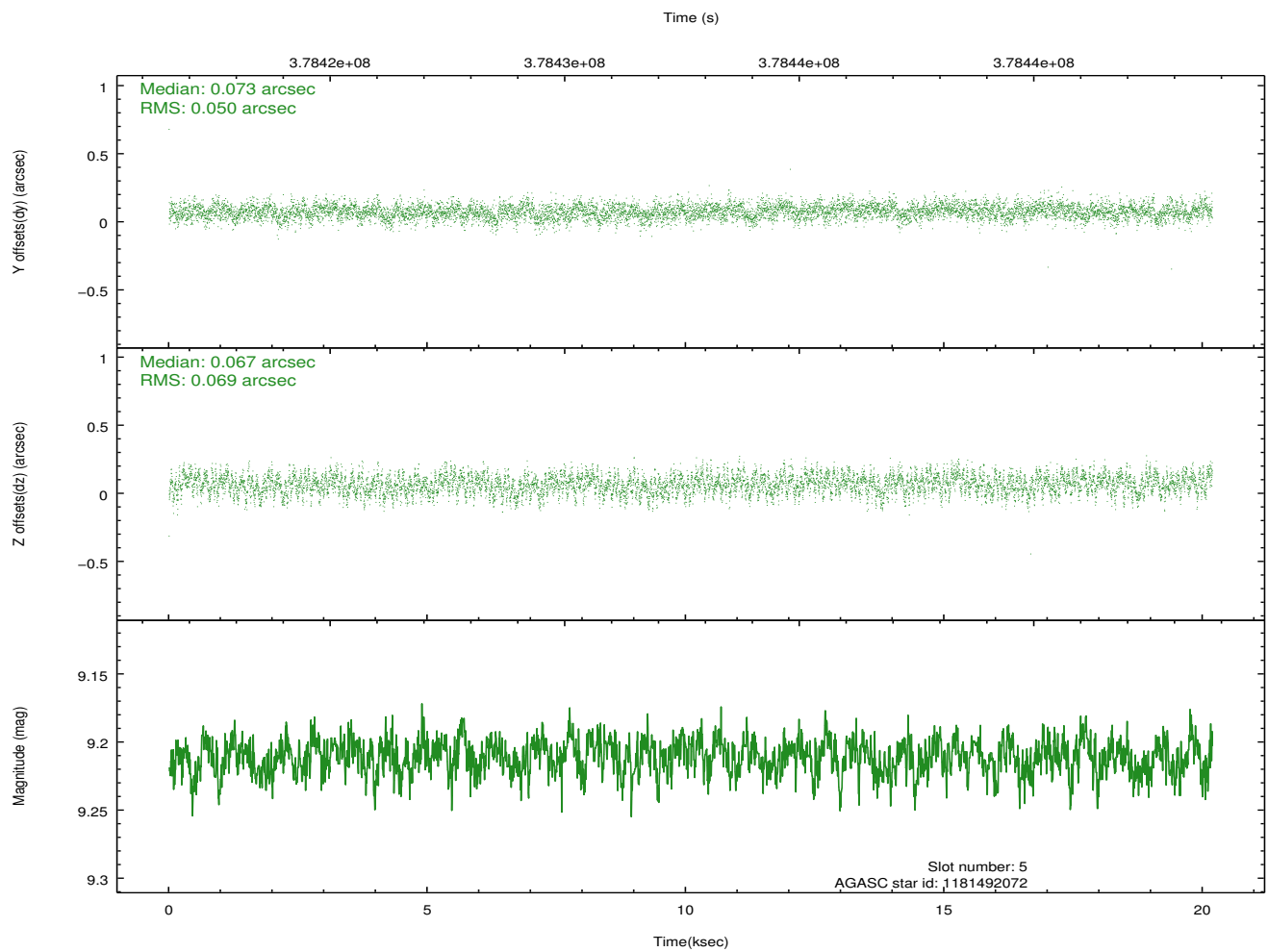
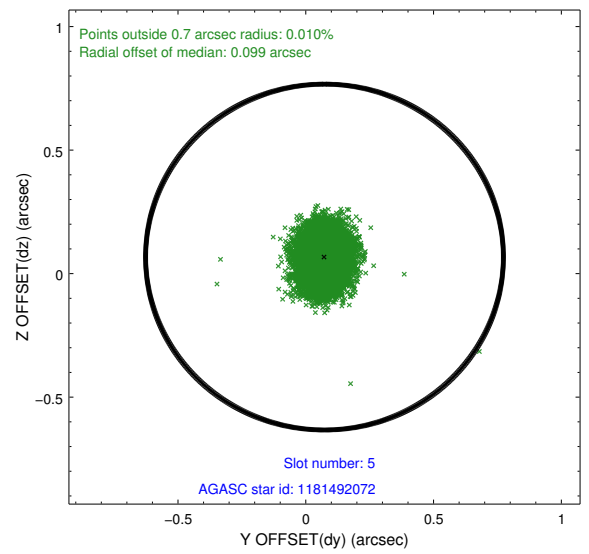
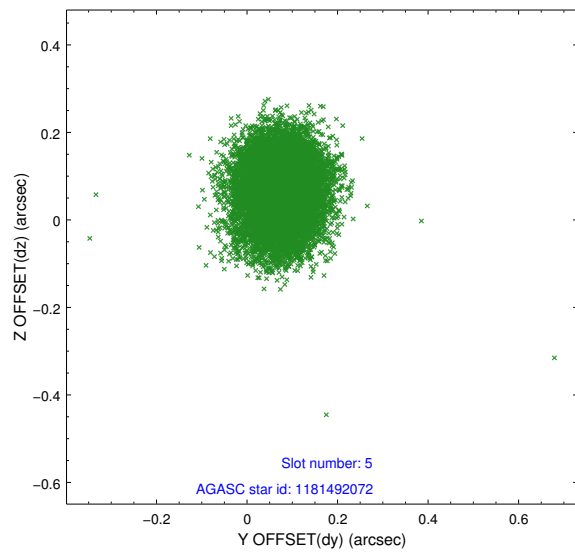
## 2.4.2 Slot 4



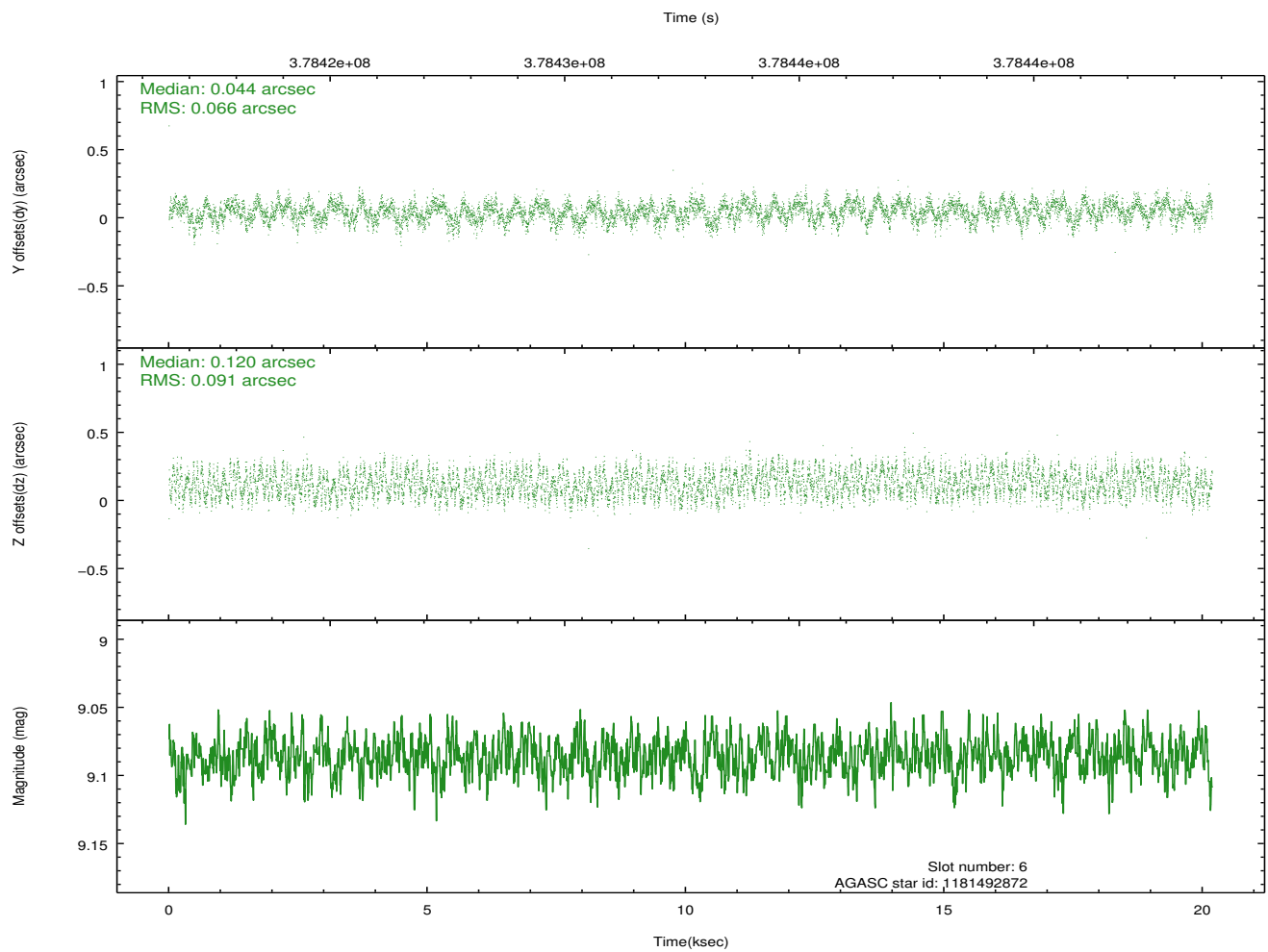
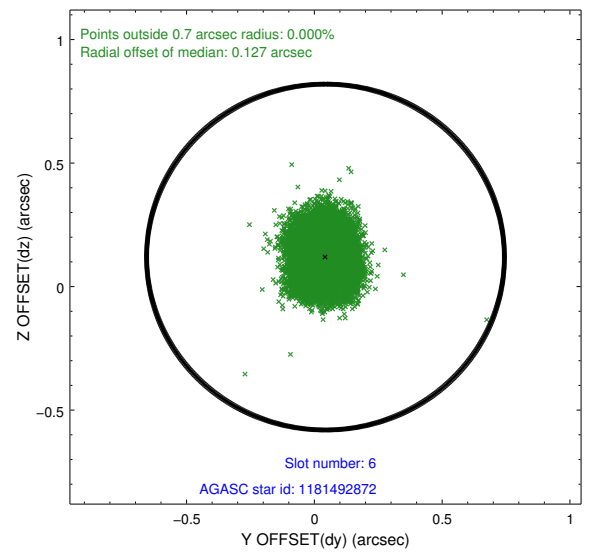
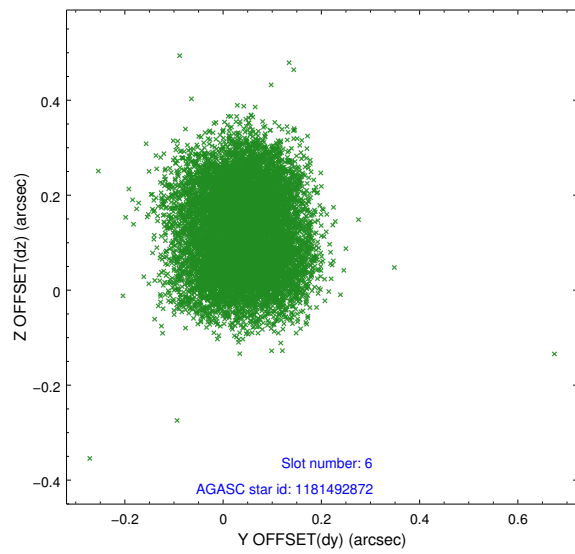
Time (s)



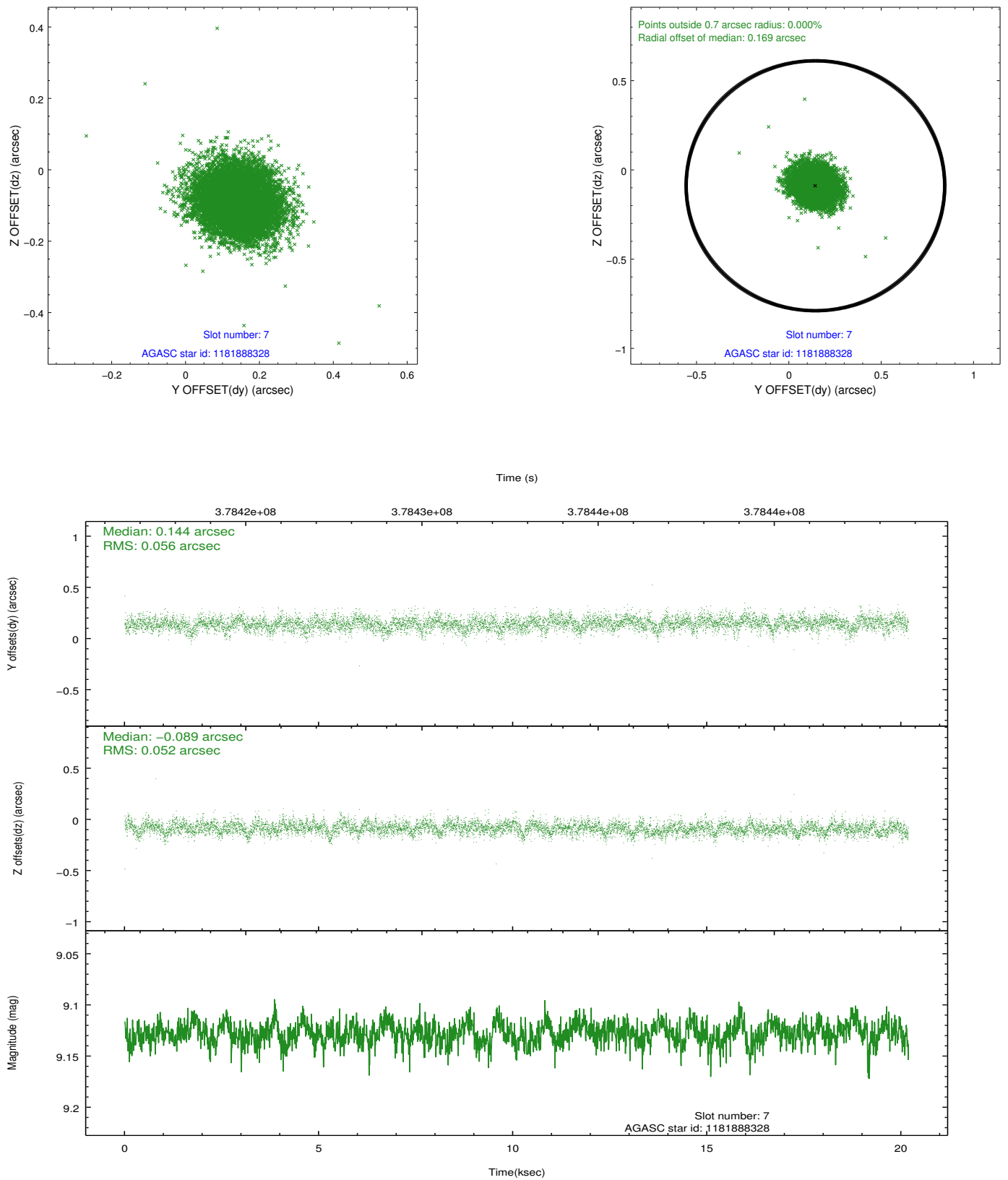
### 2.4.3 Slot 5



## 2.4.4 Slot 6

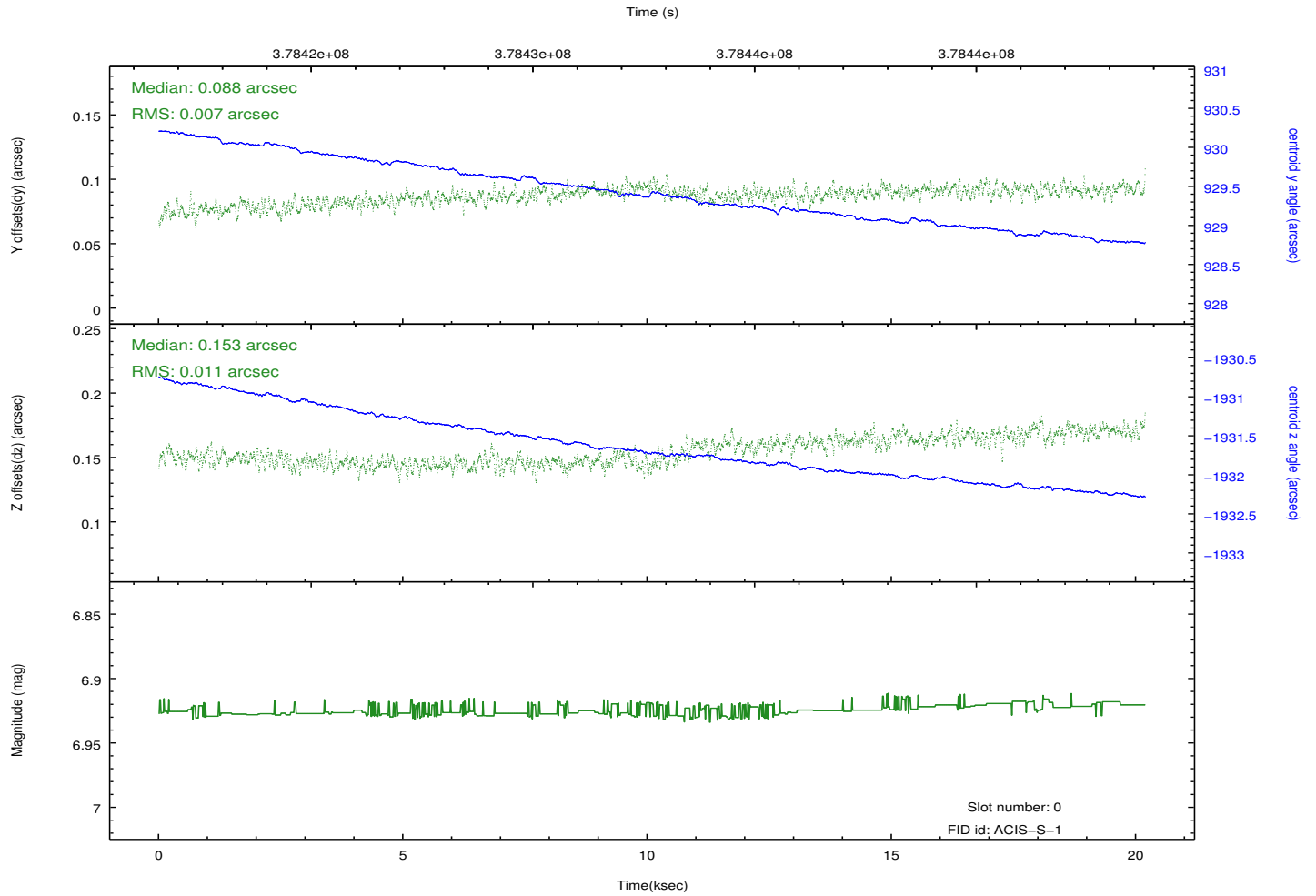
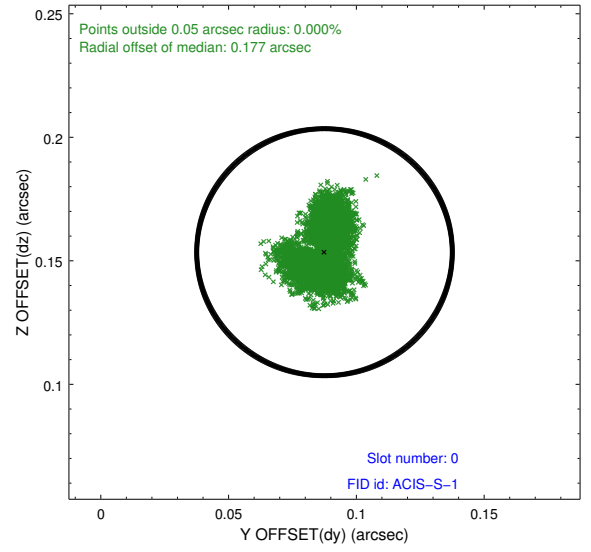
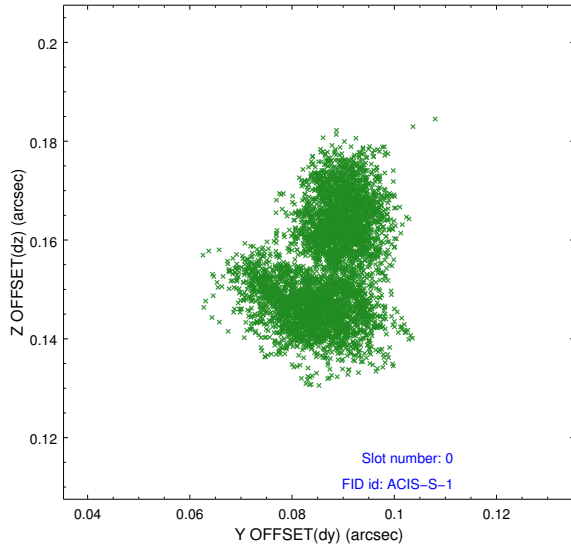


## 2.4.5 Slot 7

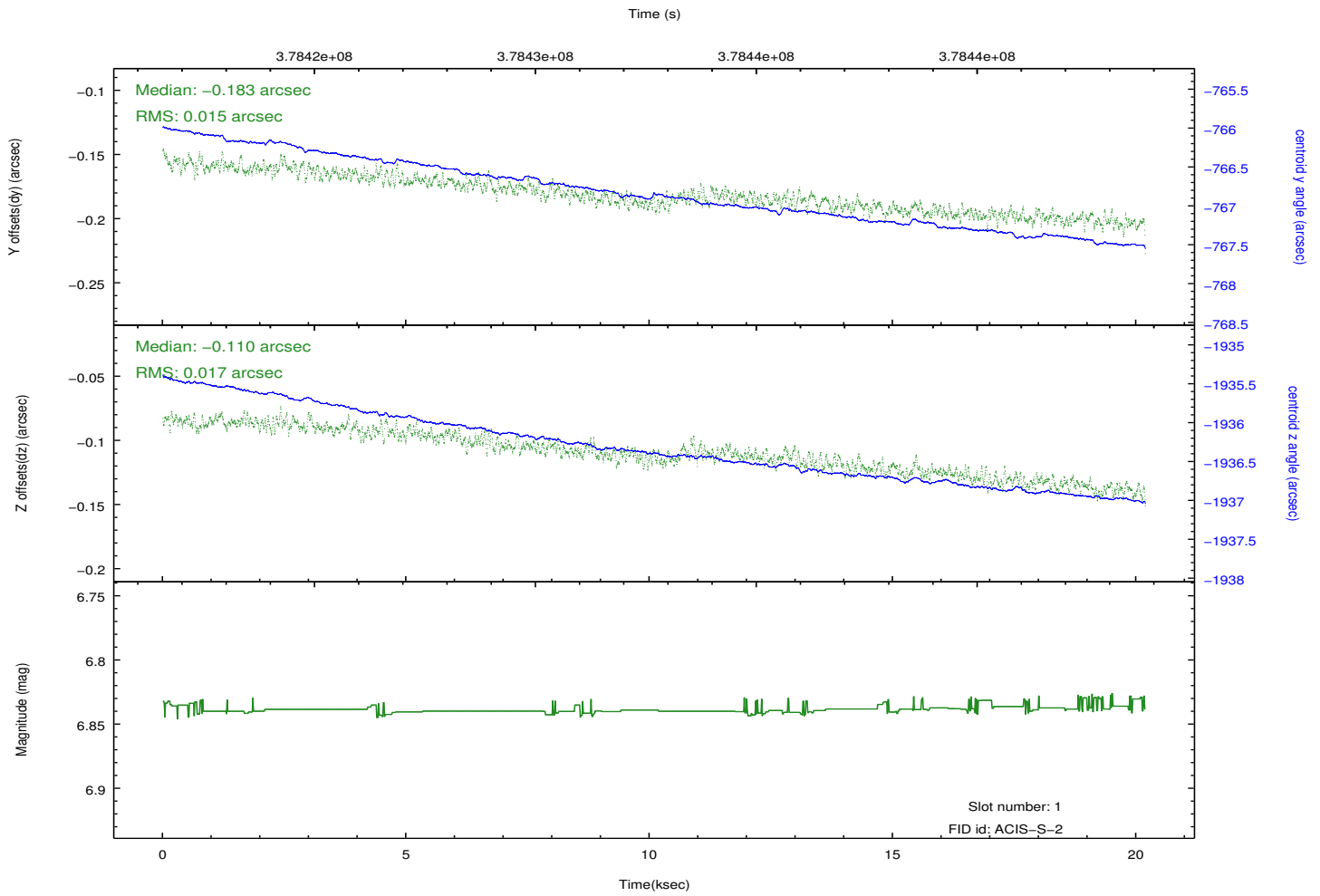
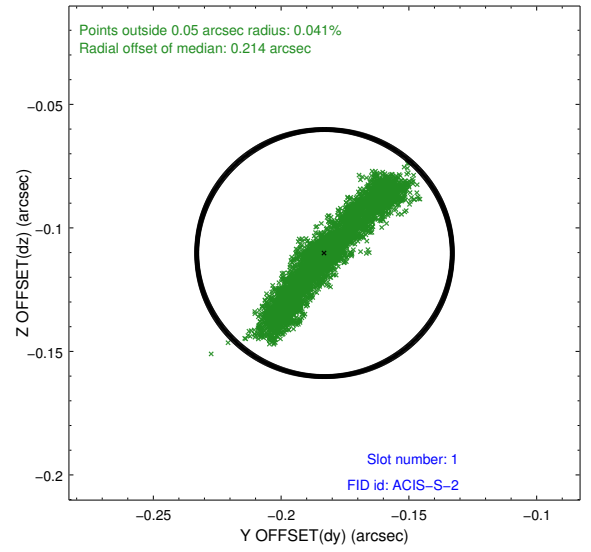
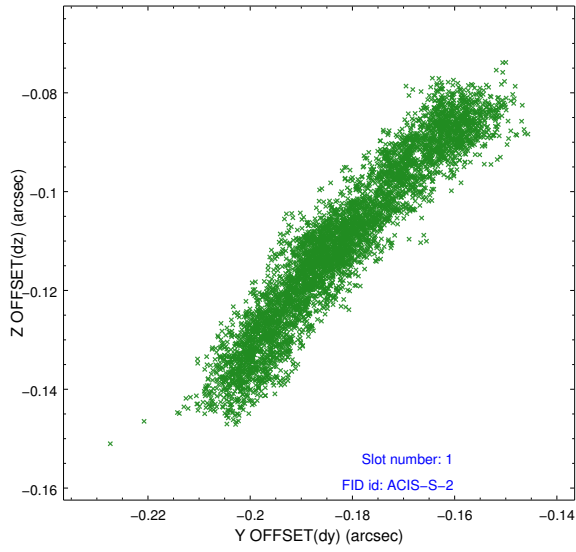


## 2.5 FID Slots

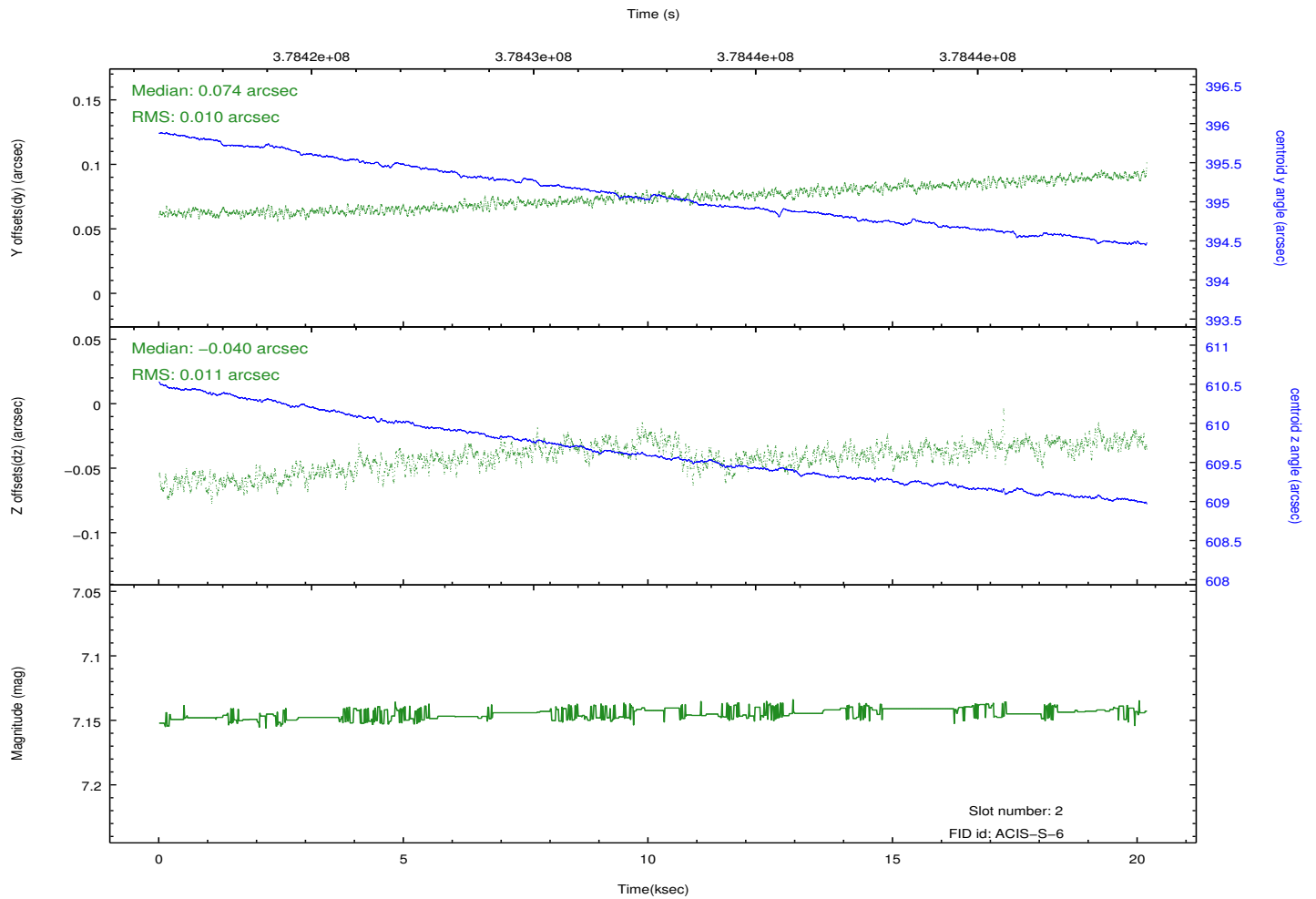
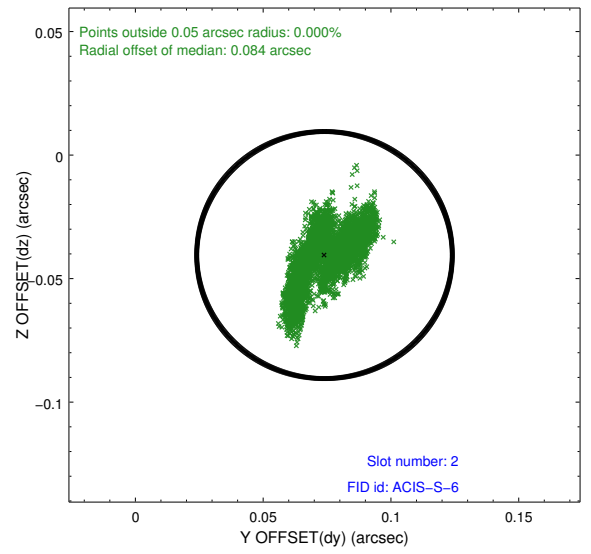
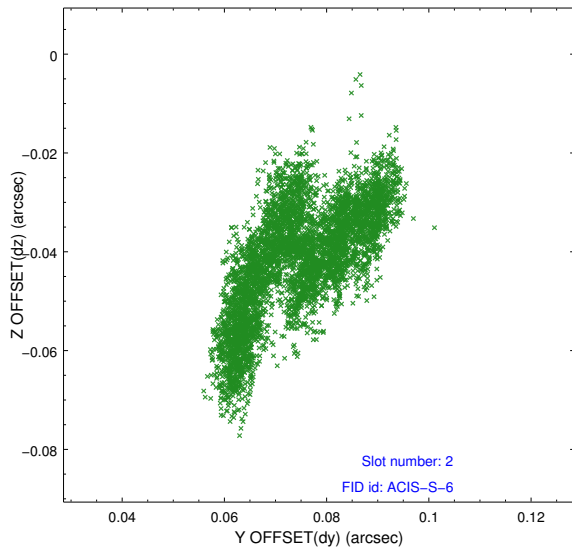
### 2.5.1 Slot 0



## 2.5.2 Slot 1



### 2.5.3 Slot 2



## A Summary

### A.1 Status

V&V Scientist	Beth Sundheim
V&V Date (YYYY-MM-DD)	2012.06.22
V&V Edition	1
V&V Disposition and Status	OK
V&V Charge Time	20.187598796725

### A.2 Comments