

V&V Reference Report

L2 ASCDS Version : 8.4.3

Observation 13407 - L2 Version 2
Chandra X-Ray Center

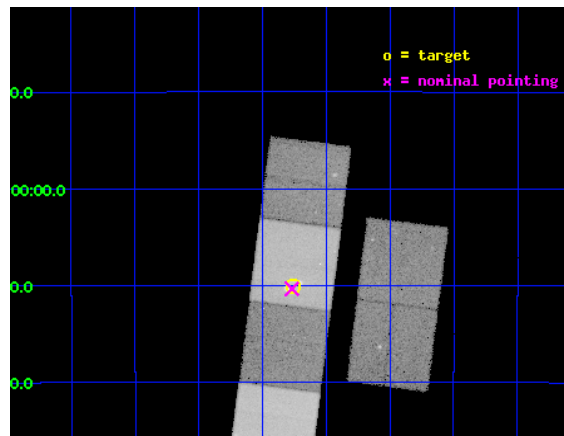
L2 Processing Date : Feb 18 2012

Contents

1	Front	2
2	OBI	3
2.1	OBI	3
2.1.1	Images	3
2.1.2	Bias	3
2.1.3	Parameters	4
2.1.4	Events	4
2.2	Compared Parameters	5
2.3	Aspect	6
2.4	Star Slots	9
2.4.1	Slot 3	9
2.4.2	Slot 4	10
2.4.3	Slot 5	11
2.4.4	Slot 6	12
2.4.5	Slot 7	13
2.5	FID Slots	14
2.5.1	Slot 0	14
2.5.2	Slot 1	15
2.5.3	Slot 2	16
A	Summary	17
A.1	Status	17
A.2	Comments	17

1 Front

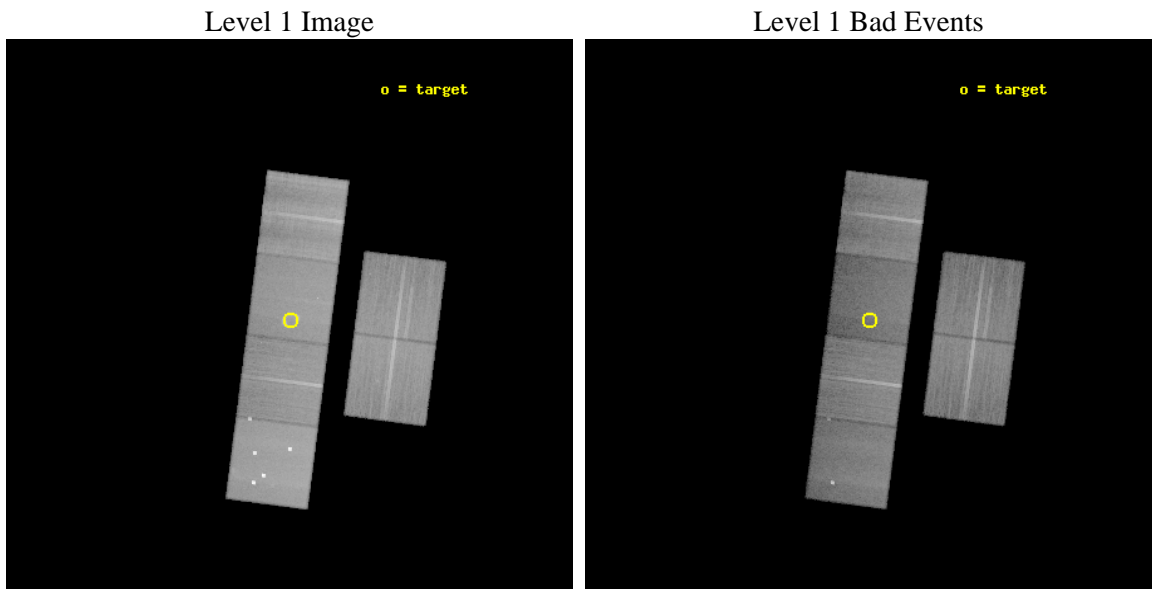
seq_num	501522	Sequence number
obs_id	13407	Observation id
title	Radioactivity, Particle Acceleration, and Supernova Ejecta in the Youngest Galactic SNR G1.9+0.3	Proposal title
observer	Dr. Kazimierz Borkowski	Principal investigator
object	G1.9+0.3	Source name
dtcycle	0	
cycle	P	events from which exps? Prim/Second/Both
ra_targ	267.189167	Observer's specified target RA [deg]
dec_targ	-27.168889	Observer's specified target Dec [deg]
ra_nom	267.19258894102	Nominal RA [deg]
dec_nom	-27.172660983465	Nominal Dec [deg]
roll_nom	277.30299733835	Nominal Roll [deg]
revision	2	Processing version of data
ontime	49052.668768585	Sum of GTIs [s]
livetime	48431.534340666	Livetime [s]
ontime2	49052.709808588	Sum of GTIs [s]
ontime3	49052.545648575	Sum of GTIs [s]
ontime5	49052.627728581	Sum of GTIs [s]
ontime6	49052.586688578	Sum of GTIs [s]
ontime7	49052.668768585	Sum of GTIs [s]
ontime8	49049.263548255	Sum of GTIs [s]
l2events	484461	Number of level 2 events



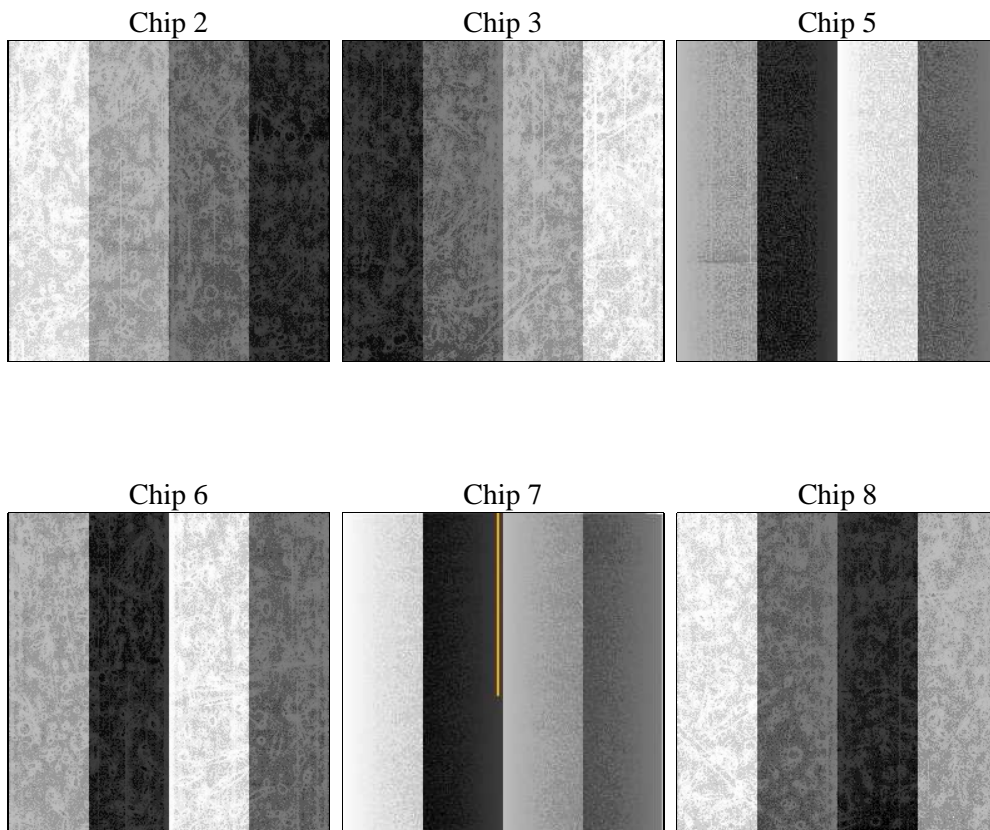
2 OBI

2.1 OBI

2.1.1 Images



2.1.2 Bias



2.1.3 Parameters

obi_num	0	Obi number	sched_exp_time	49000.000000	[s] Scheduled observation exposure time
ascdsver	8.4.3	Processing system revision	ontime	49052.668768585	Sum of GTIs [s]
caldbver	4.4.8	 	ontime2	49052.709808588	Sum of GTIs [s]
date	2012-02-18T05:34:53	Date and time of file creation	ontime3	49052.545648575	Sum of GTIs [s]
revision	2	Processing version of data	ontime5	49052.627728581	Sum of GTIs [s]
			ontime6	49052.586688578	Sum of GTIs [s]
			ontime7	49052.668768585	Sum of GTIs [s]
			ontime8	49049.263548255	Sum of GTIs [s]
			l1events	2008282	Number of level 1 events

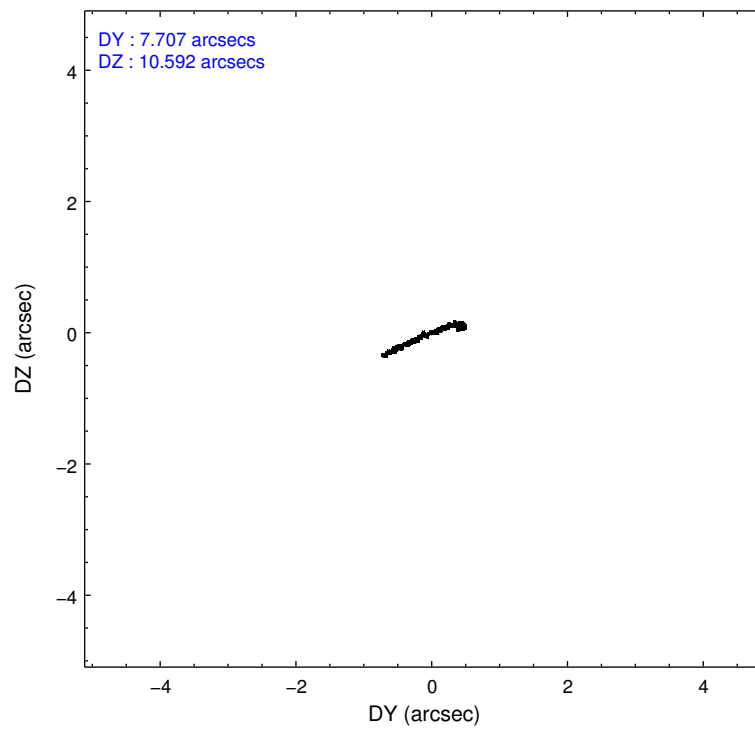
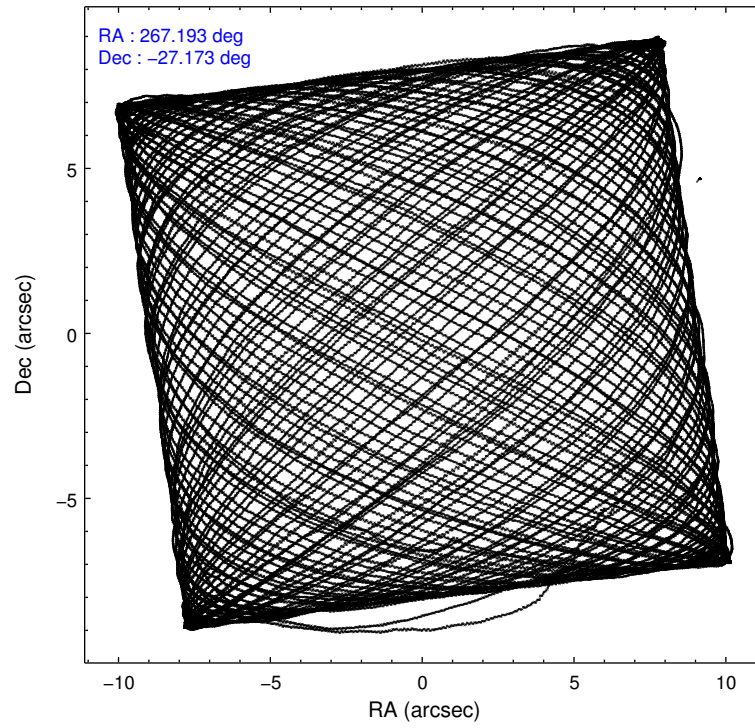
2.1.4 Events

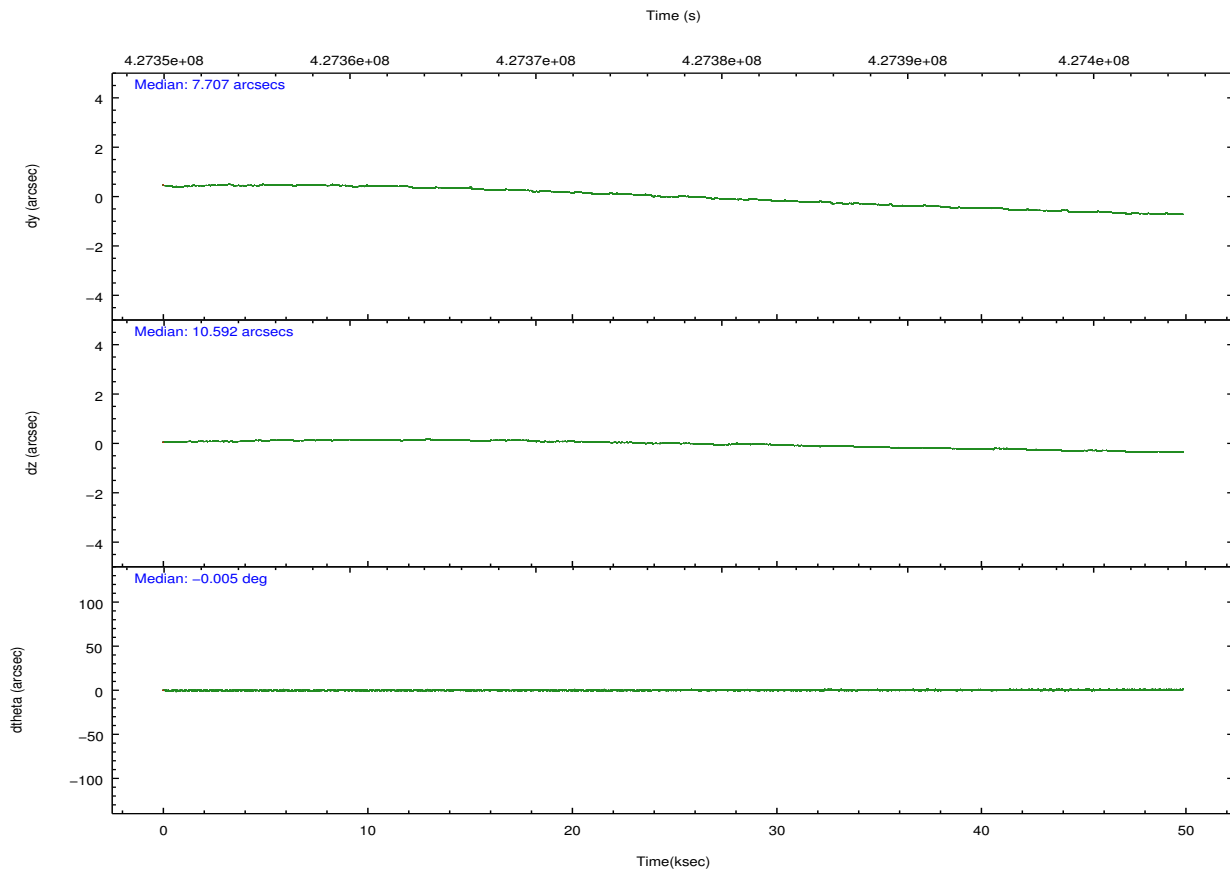
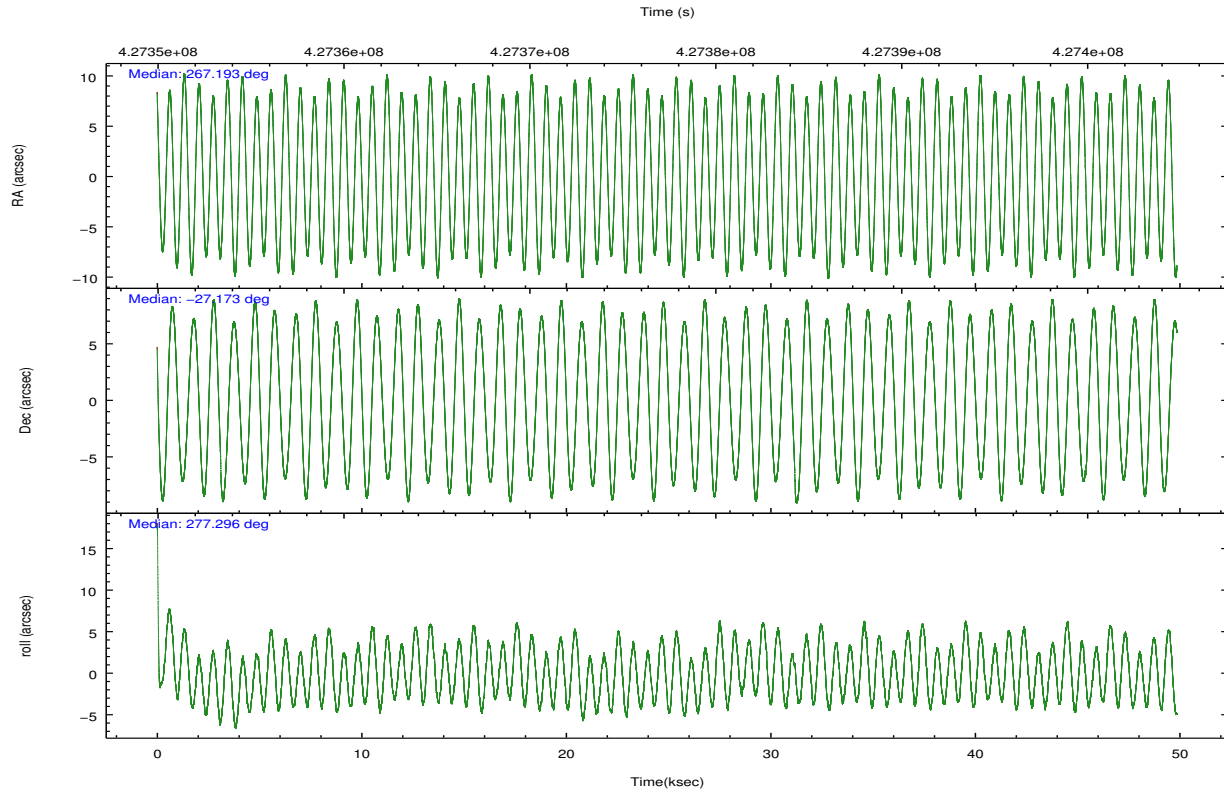
	ccd 2	ccd 3	ccd 5	ccd 6	ccd 7	ccd 8		ccd 2	ccd 3	ccd 5	ccd 6	ccd 7	ccd 8
level 1 events	299349	275167	454796	289328	327905	361737	grade 0 events	13522	13825	54620	14526	17362	31885
rejected events	266105	241613	199714	253024	164026	260481		4%	5%	12%	5%	5%	8%
rejected %	88%	87%	43%	87%	50%	72%	grade 1 events	176	187	1185	155	468	312
								0%	0%	0%	0%	0%	0%
							grade 2 events	7714	6874	73843	7768	35499	23897
								2%	2%	16%	2%	10%	6%
							grade 3 events	3178	3390	7729	3452	14810	10271
								1%	1%	1%	1%	4%	2%
							grade 4 events	3096	3480	7395	3491	14608	9709
								1%	1%	1%	1%	4%	2%
							grade 5 events	9695	11651	30725	11820	33654	17742
								3%	4%	6%	4%	10%	4%
							grade 6 events	5736	5989	111530	7068	81612	25526
								1%	2%	24%	2%	24%	7%
							grade 7 events	256232	229771	167769	241048	129892	242395
								85%	83%	36%	83%	39%	67%

2.2 Compared Parameters

Parameter	Planned	Actual	Parameter	Planned	Actual
Instrument	ACIS	ACIS	Obspar format version number	7	7
Detector	ACIS-235678	ACIS-235678	Obspar file type	PREDICTED	ACTUAL
Grating	NONE	NONE	Obspar update status	NONE	UPDATED
Data mode	VFAINT	VFAINT	CCD I0 on	N	N
Observation mode	POINTING	POINTING	CCD I1 on	N	N
[deg] Pointing RA	267.173643	267.1925889410191	CCD I2 on	O1	Y
[deg] Pointing Dec	-27.151136	-27.17266098346548	CCD I3 on	Y	Y
[deg] Pointing Roll	277.137720	277.302997338353	CCD S0 on	N	N
[mm] SIM focus pos	-0.684267	-0.6828225247311905	CCD S1 on	O2	Y
[mm] SIM defocus	0	0.001444936568705701	CCD S2 on	Y	Y
[mm] SIM translation stage pos	-190.132523	-190.1425803651734	CCD S3 on	Y	Y
[mm] SIM translation stage offset	0	0.01005778216563158	CCD S4 on	Y	Y
[s] Observation start time (MET)	427353302.184000	427351958.56377	CCD S5 on	N	N
Observation start date	2011-07-18T05:13:56	2011-07-18T04:52:38	Number of optional ACIS chips dropped	0	0
[s] Observation end time (MET)	427402302.184000	427403404.34146	On-chip summing requested	N	N
Observation end date	2011-07-18T18:50:36	2011-07-18T19:10:04	Subarray requested	NONE	NONE
Read mode	TIMED	TIMED	Alternating exposures requested	N	N
			[s] Primary exposure time	0.000000	3.2

2.3 Aspect





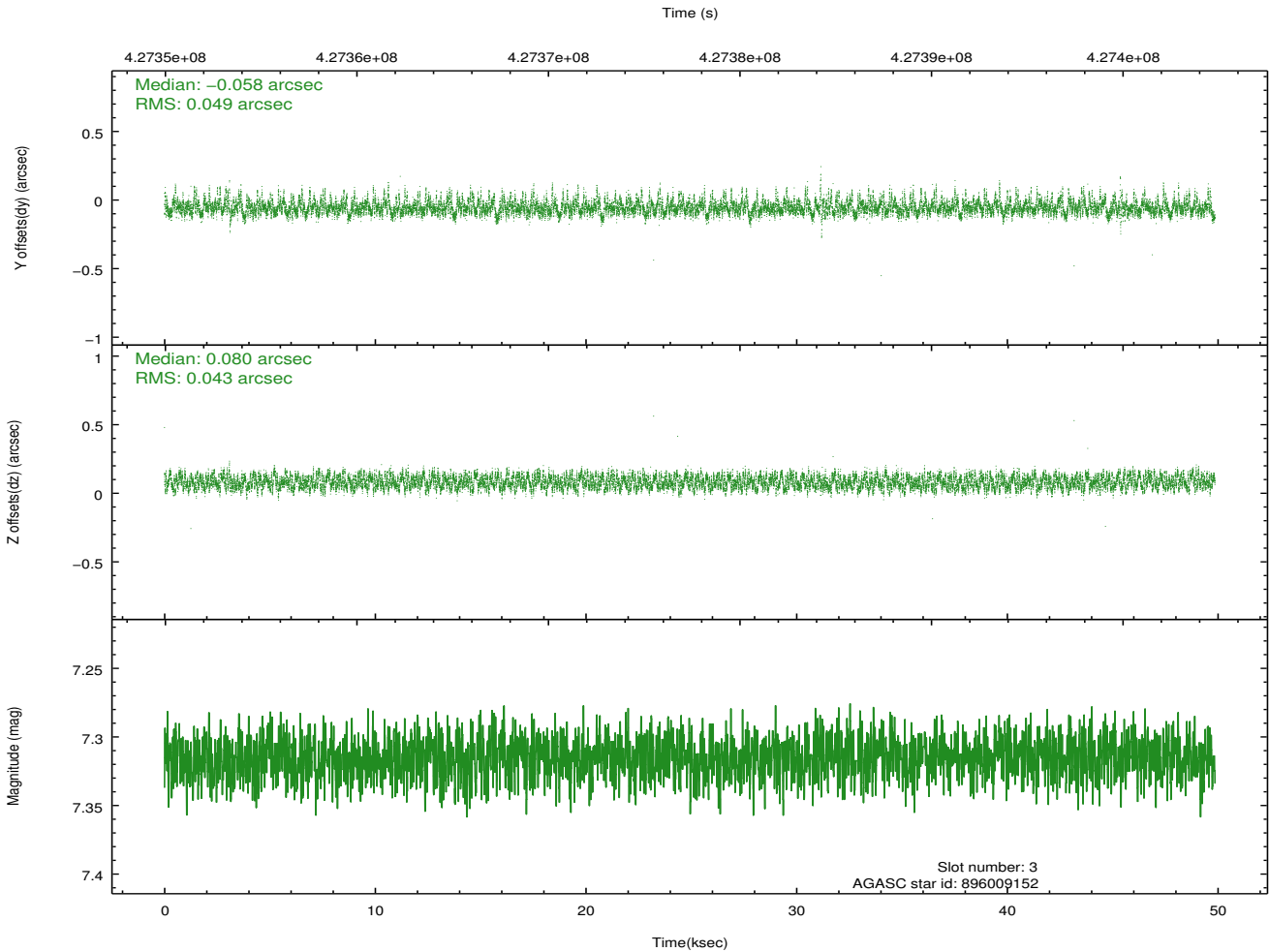
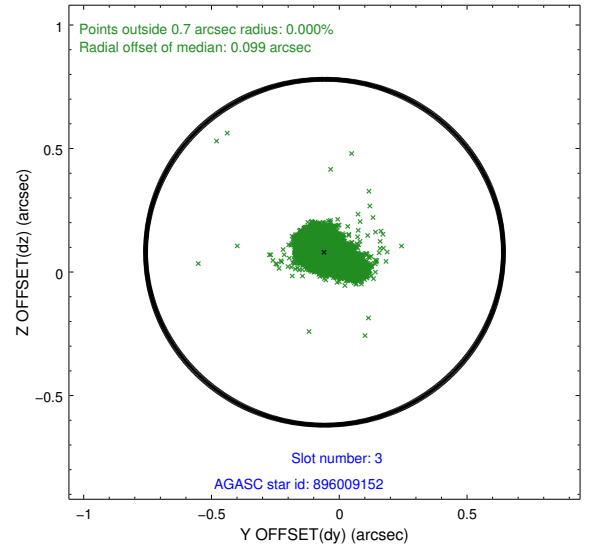
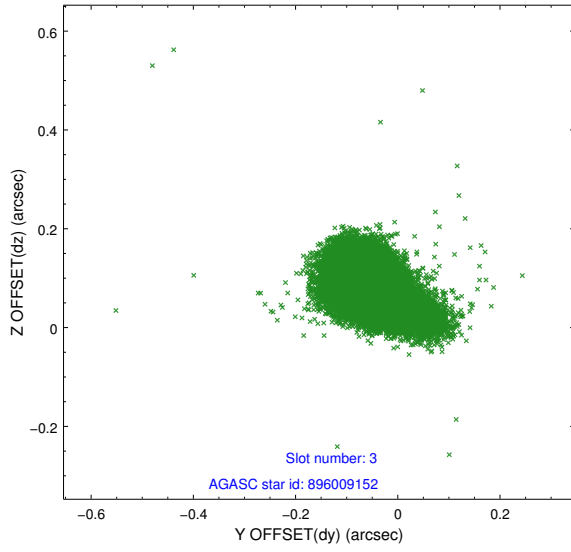
Slot Statistics

slot	status	id	mag	n_pts	med_dy	med_dz	dr1	dr2	ra	dec	mean_y	mean_z
0	FID	ACIS-S-2	7.02	12162	-0.076	-0.050	0.009	0.020	0.000000	0.000000	-760.50	-1731.82
1	FID	ACIS-S-4	7.11	12161	0.230	0.050	0.014	0.021	0.000000	0.000000	2153.07	176.82
2	FID	ACIS-S-5	7.15	12162	-0.185	0.009	0.019	0.028	0.000000	0.000000	-1813.50	170.37
3	GUIDE	896009152	7.31	24323	-0.058	0.080	0.066	0.116	267.588100	-27.061669	-151.78	1357.98
4	GUIDE	896011072	8.85	24297	-0.116	0.001	0.099	0.162	267.780553	-27.396374	1122.83	1813.97
5	GUIDE	896013040	7.33	24320	-0.006	-0.078	0.054	0.086	266.506589	-26.972299	-898.58	-2044.40
6	GUIDE	896014528	7.68	24318	0.033	0.037	0.060	0.097	266.628858	-27.438607	814.88	-1856.10
7	GUIDE	897713656	8.83	24294	0.138	-0.046	0.077	0.121	267.994864	-27.592870	1912.27	2401.39

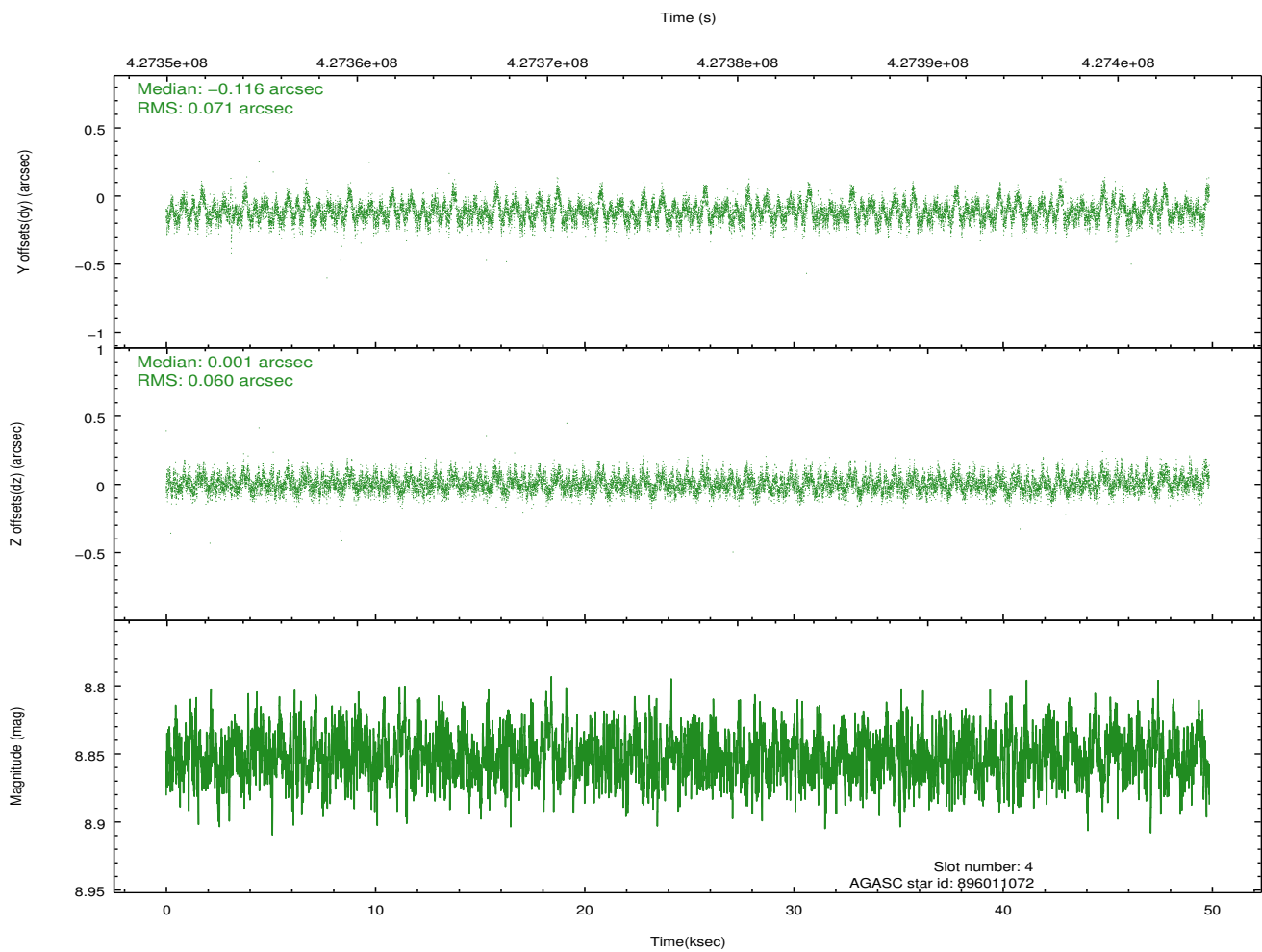
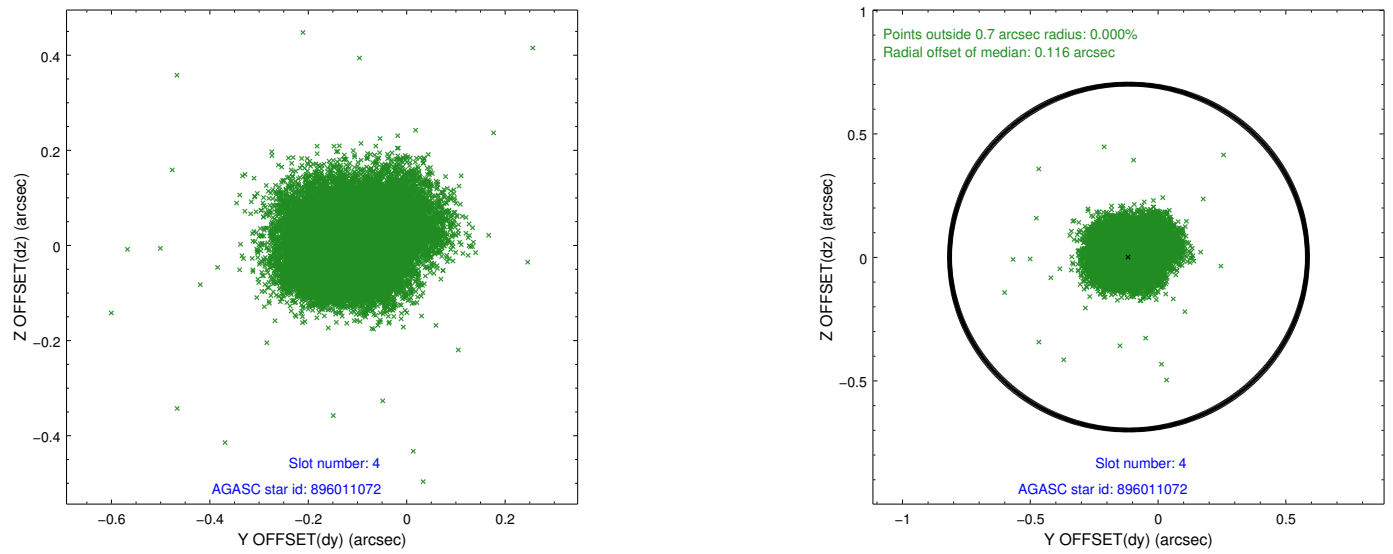
∞

2.4 Star Slots

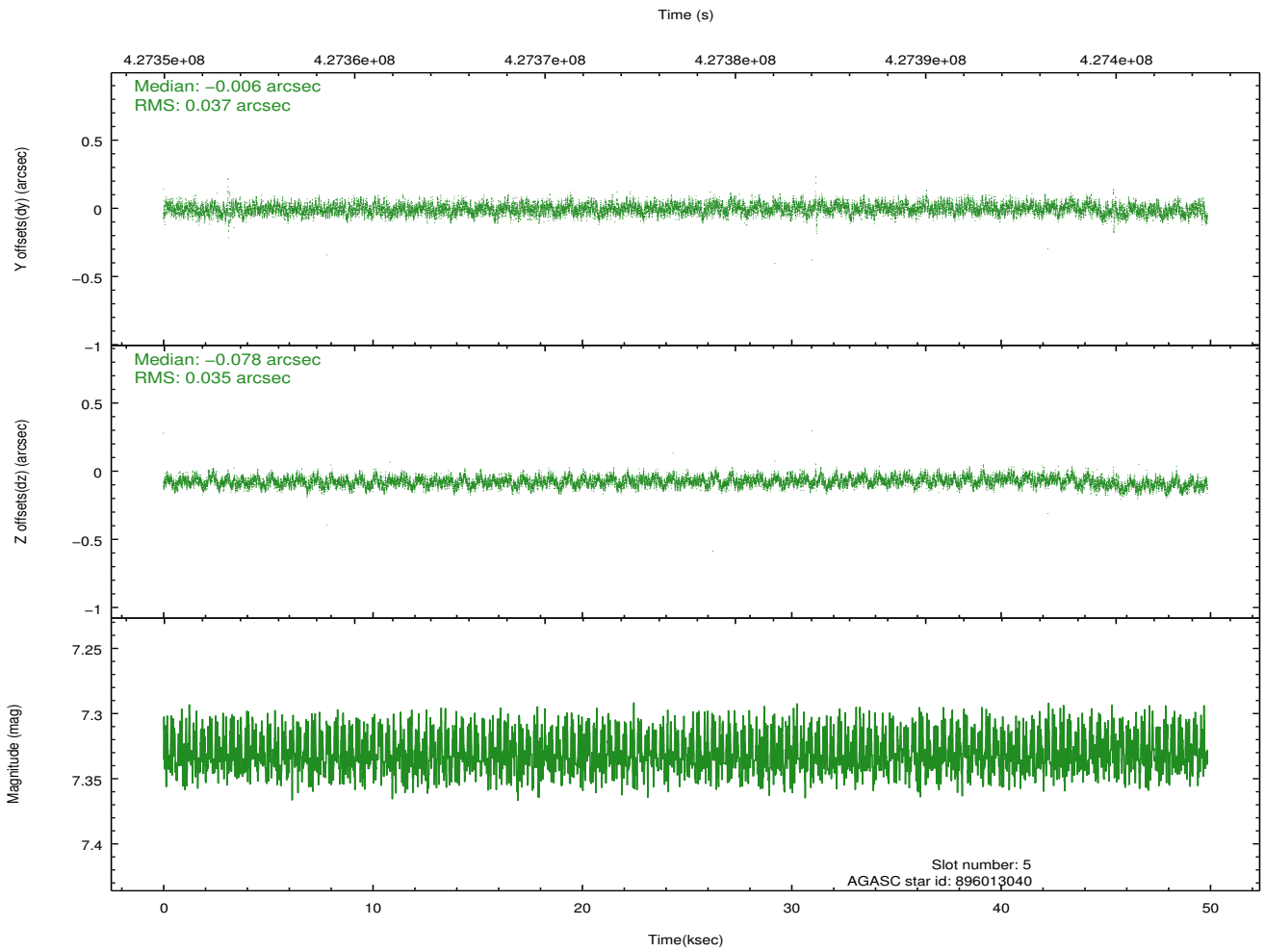
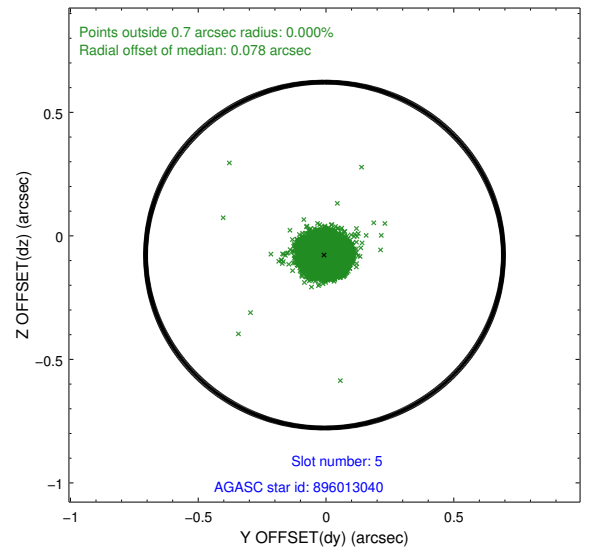
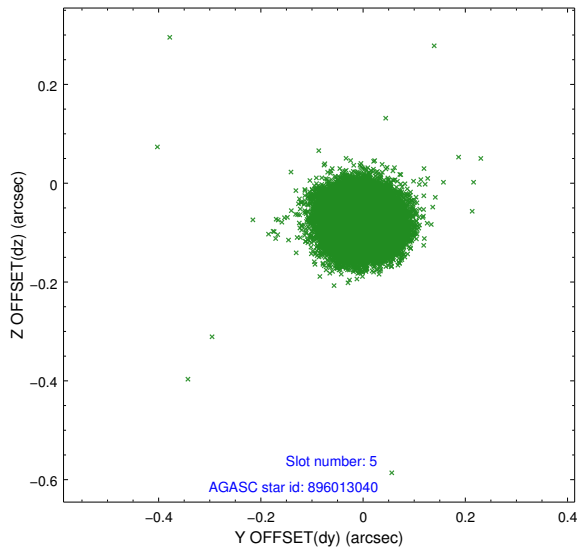
2.4.1 Slot 3



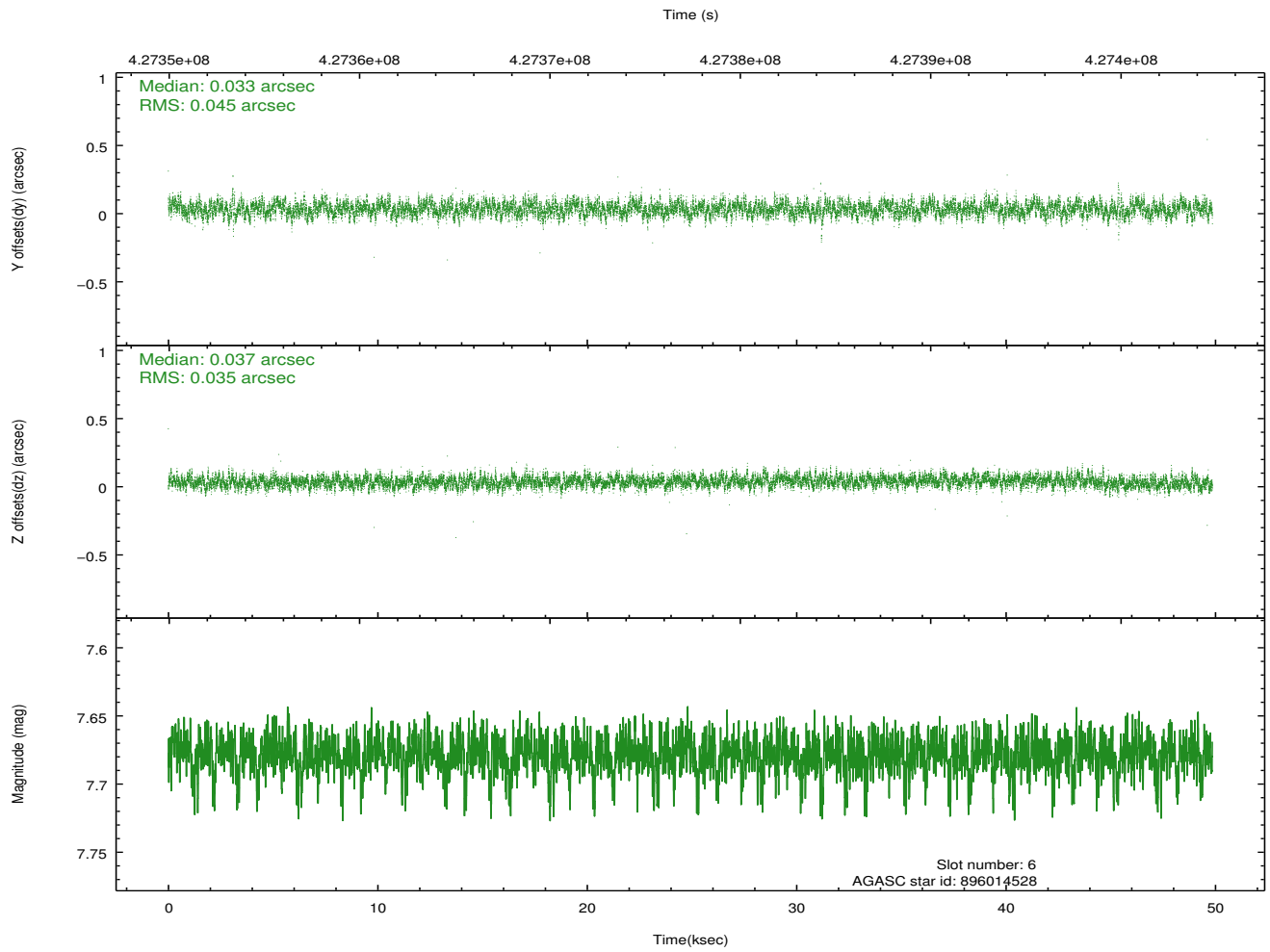
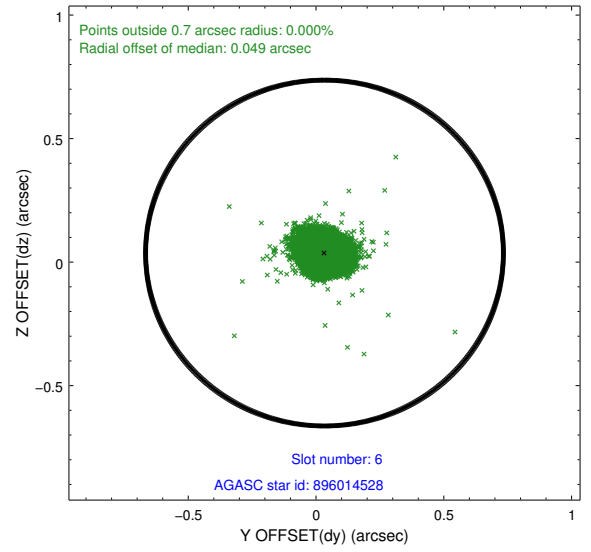
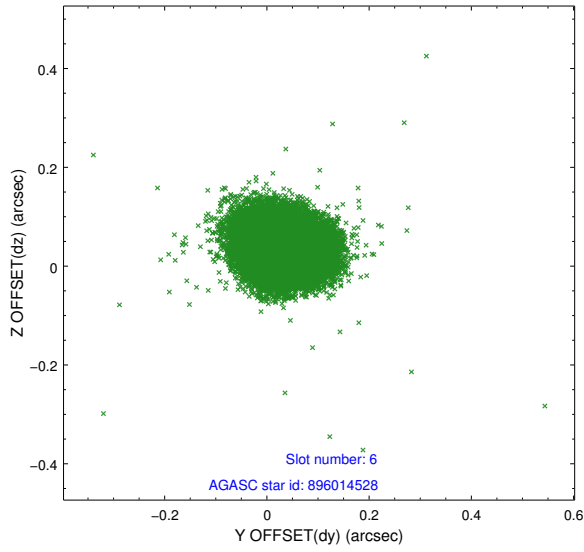
2.4.2 Slot 4



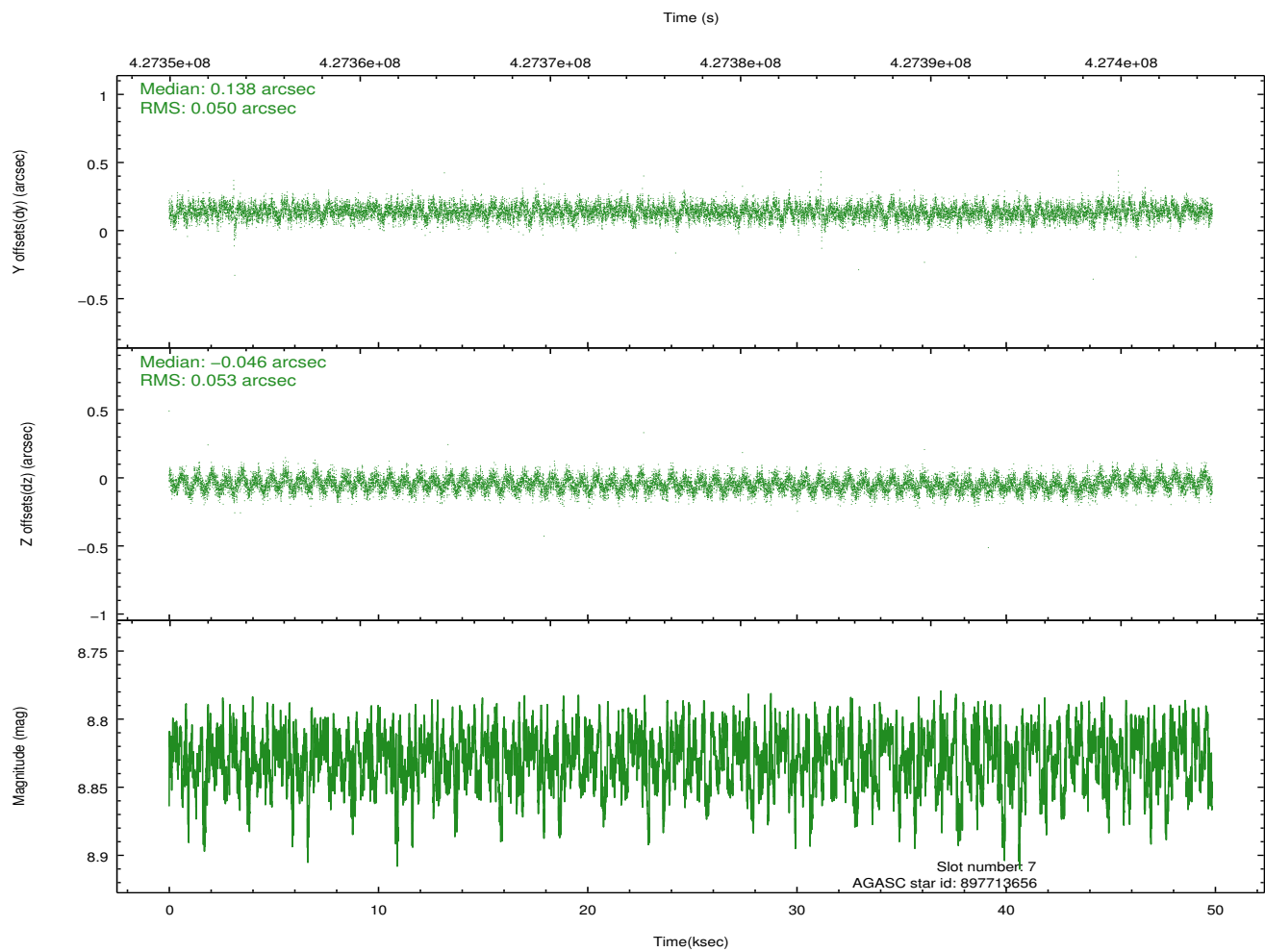
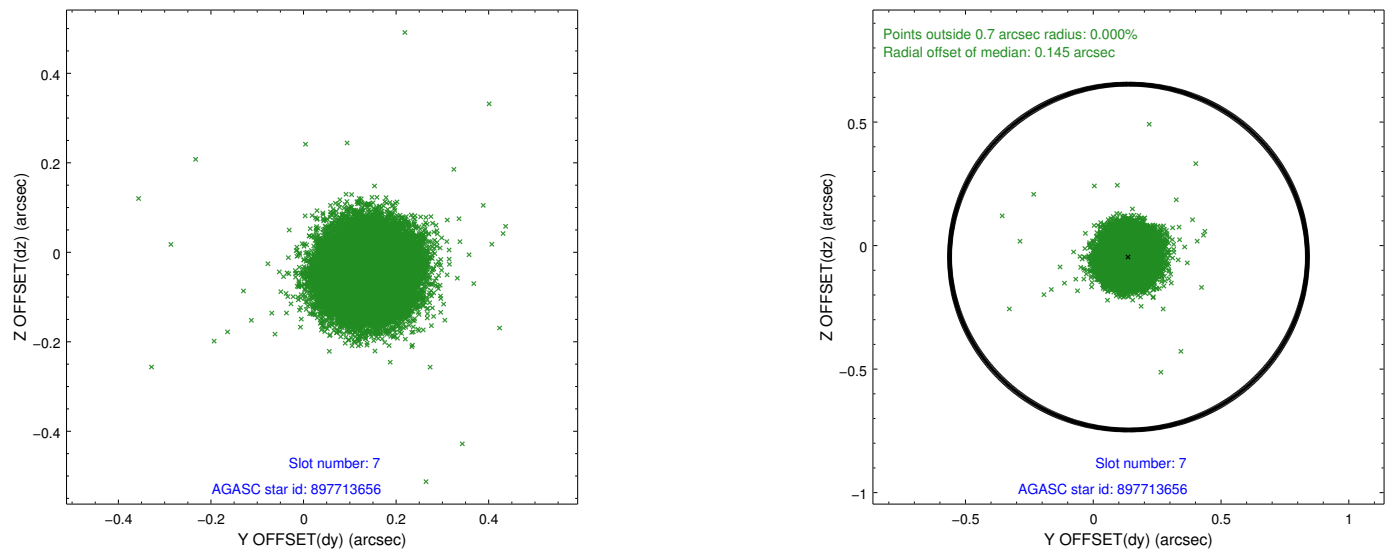
2.4.3 Slot 5



2.4.4 Slot 6

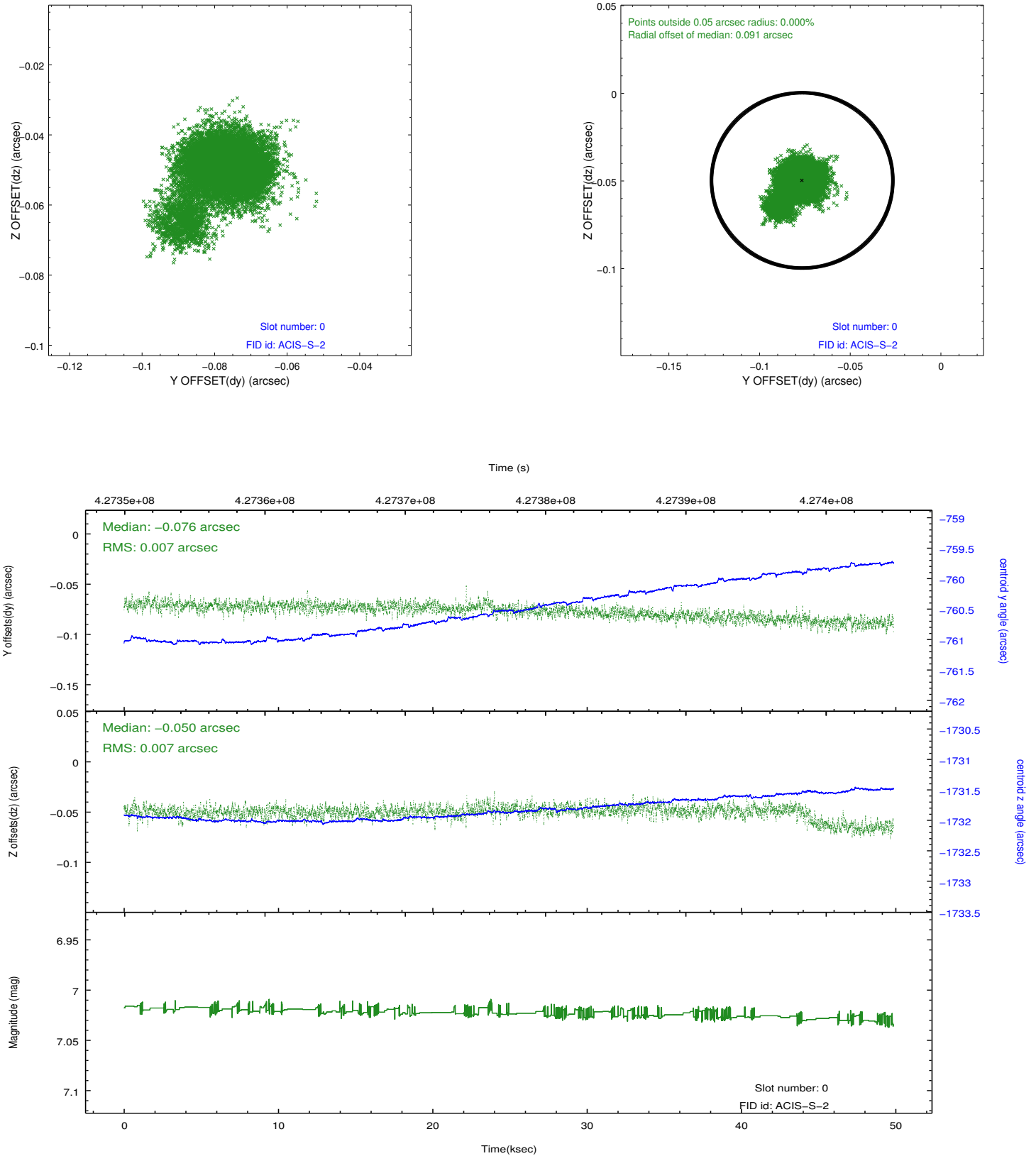


2.4.5 Slot 7

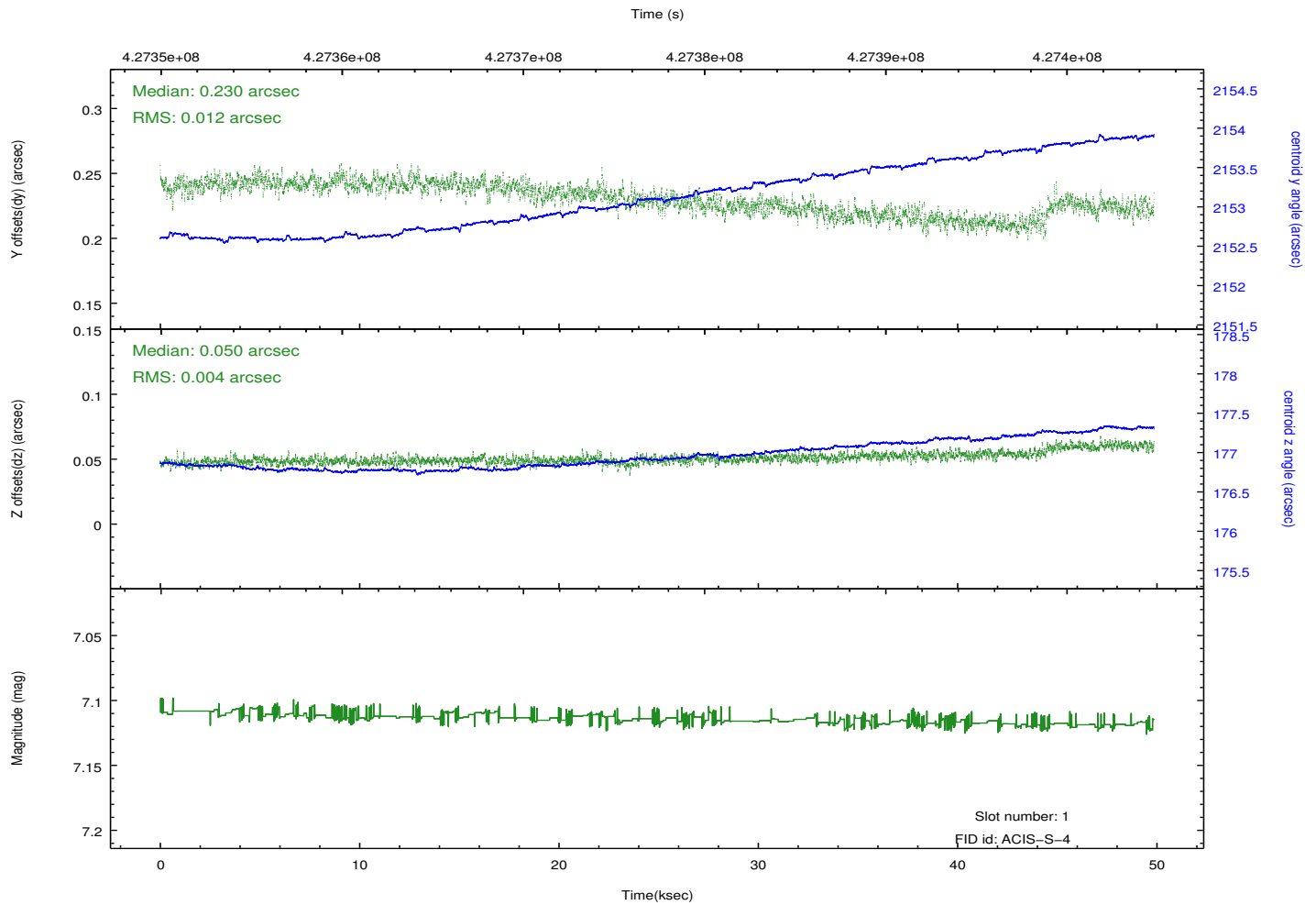
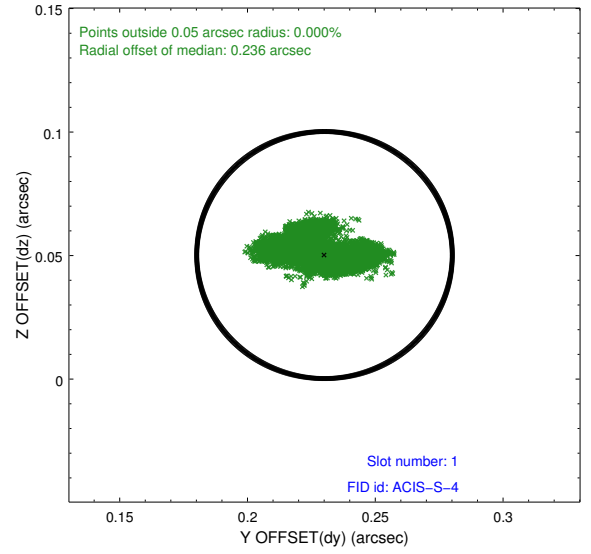
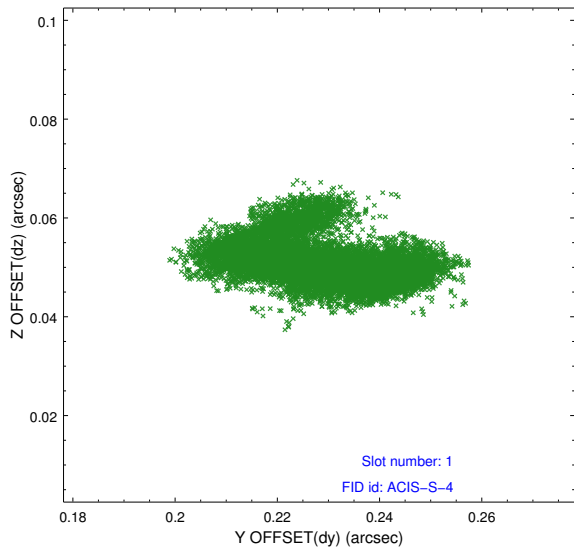


2.5 FID Slots

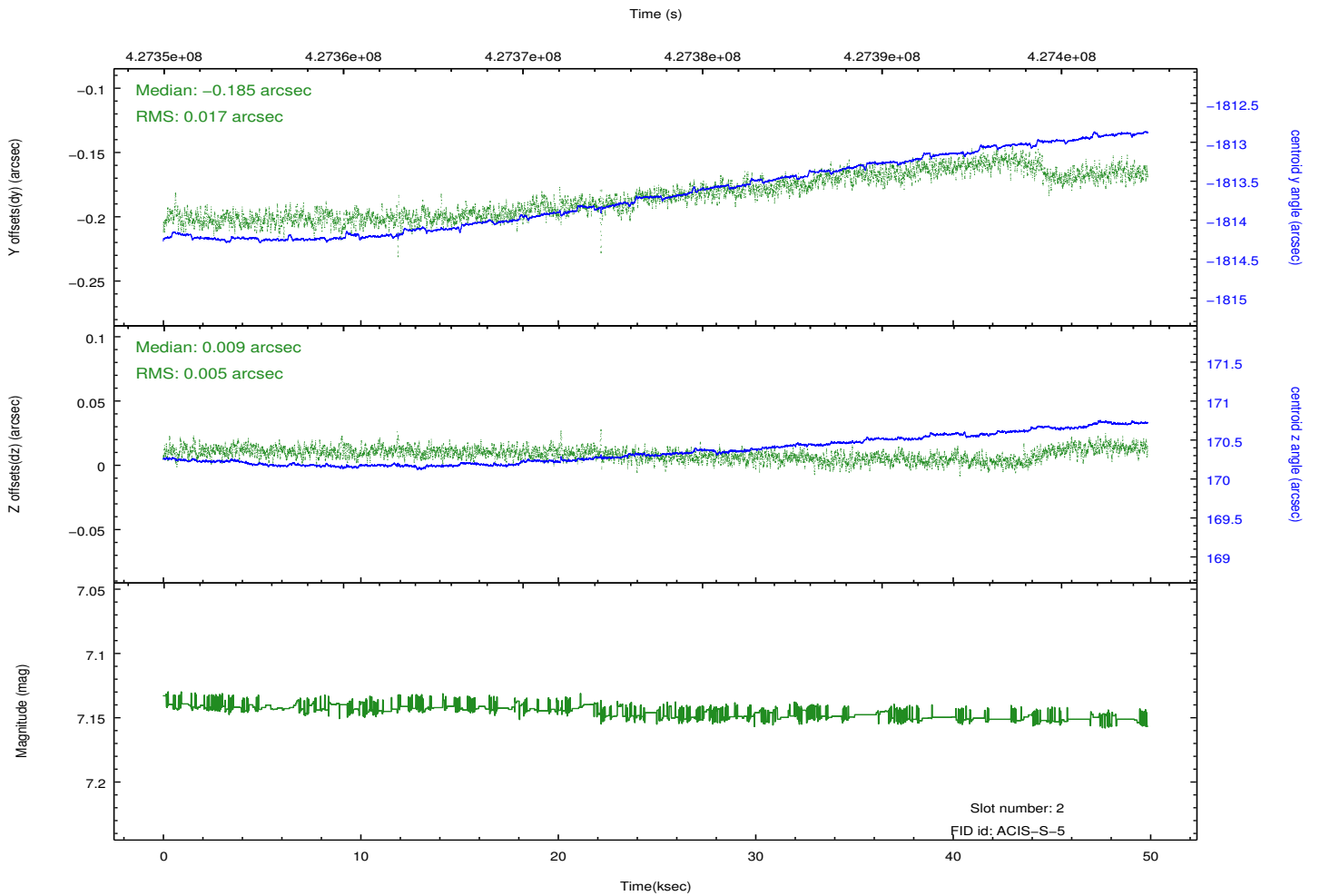
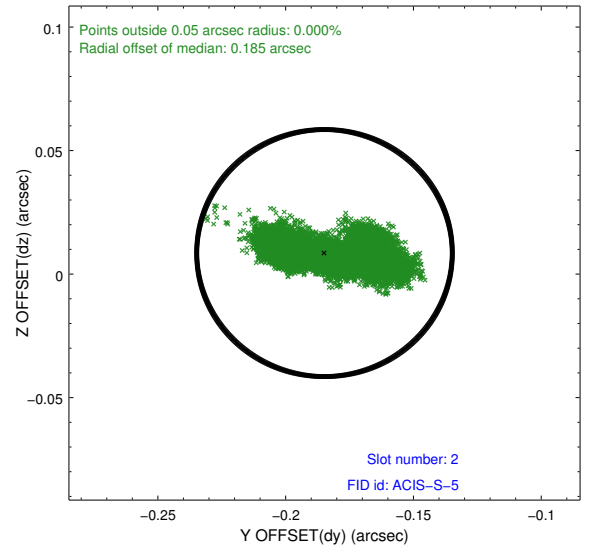
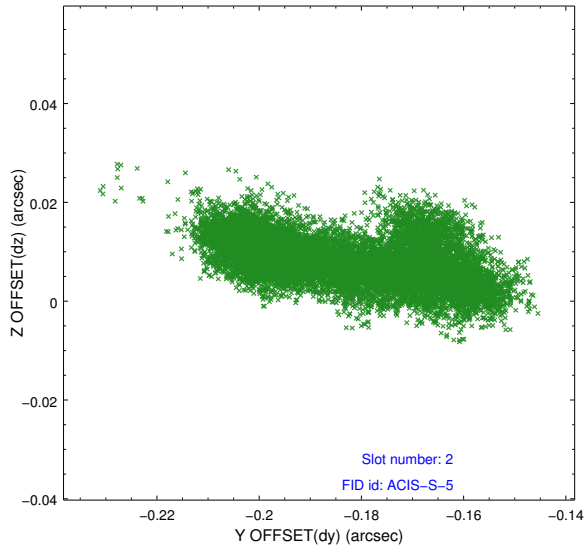
2.5.1 Slot 0



2.5.2 Slot 1



2.5.3 Slot 2



A Summary

A.1 Status

V&V Scientist	Beth Sundheim
V&V Date (YYYY-MM-DD)	2012.02.21
V&V Edition	1
V&V Disposition and Status	OK
V&V Charge Time	49.052668767393

A.2 Comments