

# V&V Reference Report

## L2 ASCDS Version : 8.4.5

Observation 13777 - L2 Version 1  
Chandra X-Ray Center

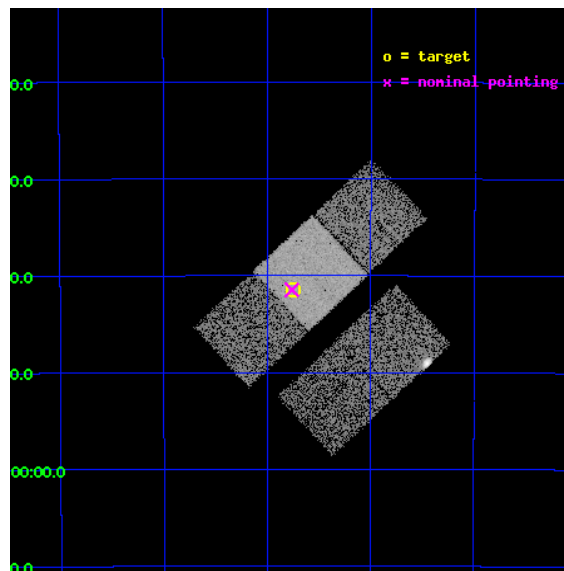
L2 Processing Date : Jun 22 2012

## Contents

<b>1</b>	<b>Front</b>	<b>2</b>
<b>2</b>	<b>OBI</b>	<b>3</b>
2.1	OBI . . . . .	3
2.1.1	Images . . . . .	3
2.1.2	Bias . . . . .	3
2.1.3	Parameters . . . . .	4
2.1.4	Events . . . . .	4
2.2	Compared Parameters . . . . .	5
2.3	Aspect . . . . .	6
2.4	Star Slots . . . . .	9
2.4.1	Slot 3 . . . . .	9
2.4.2	Slot 4 . . . . .	10
2.4.3	Slot 5 . . . . .	11
2.4.4	Slot 6 . . . . .	12
2.4.5	Slot 7 . . . . .	13
2.5	FID Slots . . . . .	14
2.5.1	Slot 0 . . . . .	14
2.5.2	Slot 1 . . . . .	15
2.5.3	Slot 2 . . . . .	16
<b>A</b>	<b>Summary</b>	<b>17</b>
A.1	Status . . . . .	17
A.2	Comments . . . . .	17

# 1 Front

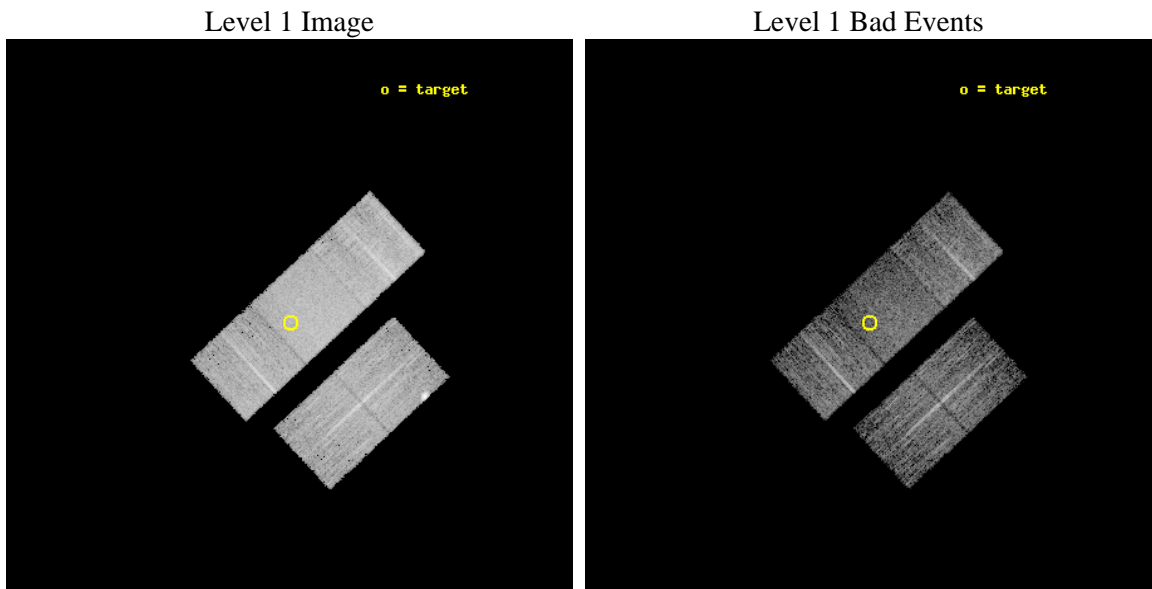
seq_num	501609	Sequence number
obs_id	13777	Observation id
title	Hunting for Anti-magnetars with Chandra	Proposal title
observer	Dr Chi-Yung Ng	Principal investigator
object	PSR J1650-4341	Source name
dtcycle	0	&#160
cycle	P	events from which exps? Prim/Second/Both
ra_targ	252.68625	Observer's specified target RA [deg]
dec_targ	-43.691889	Observer's specified target Dec [deg]
ra_nom	252.69038033323	Nominal RA [deg]
dec_nom	-43.69109138604	Nominal Dec [deg]
roll_nom	316.94105741546	Nominal Roll [deg]
revision	1	Processing version of data
ontime	8065.1967595816	Sum of GTIs [s]
livetime	7959.8190264062	Livetime [s]
ontime2	8065.0325995684	Sum of GTIs [s]
ontime3	8065.114679575	Sum of GTIs [s]
ontime6	8065.1557195783	Sum of GTIs [s]
ontime7	8065.1967595816	Sum of GTIs [s]
ontime8	8065.0736395717	Sum of GTIs [s]
l2events	49193	Number of level 2 events



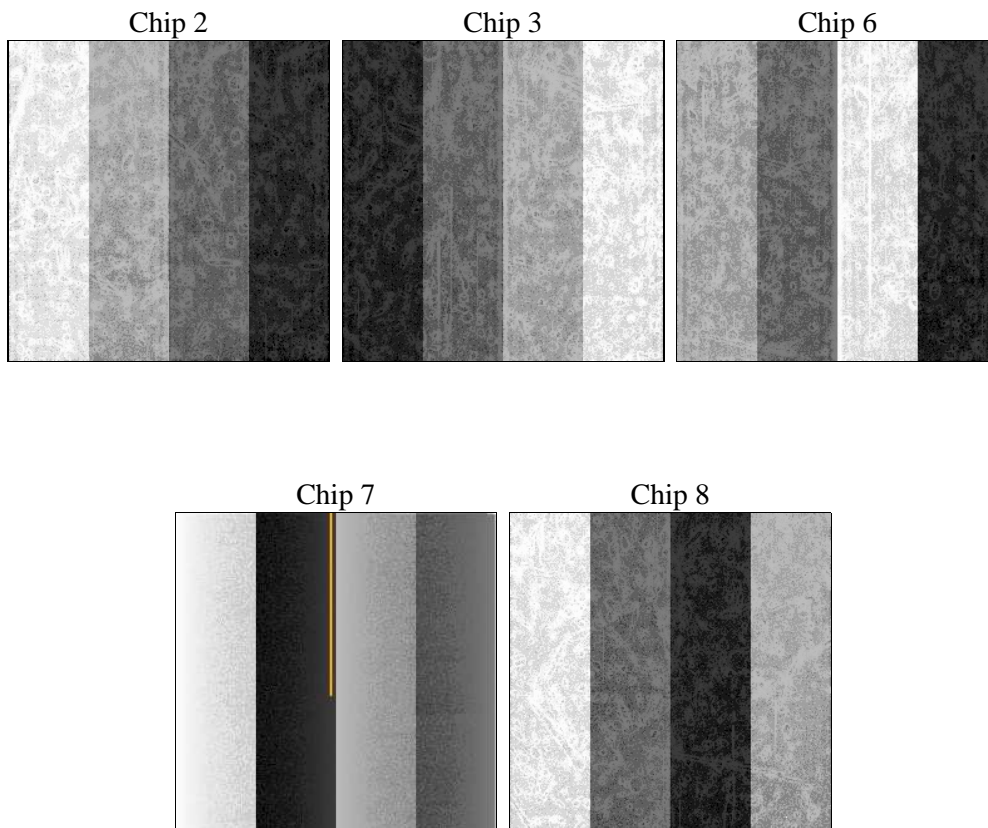
## 2 OBI

### 2.1 OBI

#### 2.1.1 Images



#### 2.1.2 Bias



### 2.1.3 Parameters

obi_num	2	Obi number	sched_exp_time	8000.000000	[s] Scheduled observation exposure time
ascdsver	8.4.5	Processing system revision	ontime	8065.1967595816	Sum of GTIs [s]
caldbver	4.4.10	&#160	ontime2	8065.0325995684	Sum of GTIs [s]
date	2012-06-23T01:52:20	Date and time of file creation	ontime3	8065.114679575	Sum of GTIs [s]
revision	1	Processing version of data	ontime6	8065.1557195783	Sum of GTIs [s]
			ontime7	8065.1967595816	Sum of GTIs [s]
			ontime8	8065.0736395717	Sum of GTIs [s]
			l1events	259113	Number of level 1 events

### 2.1.4 Events

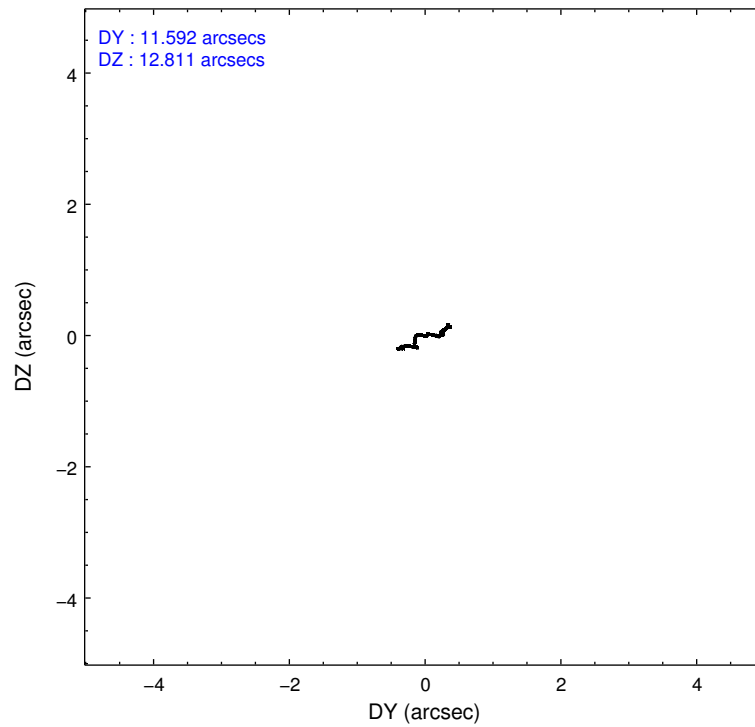
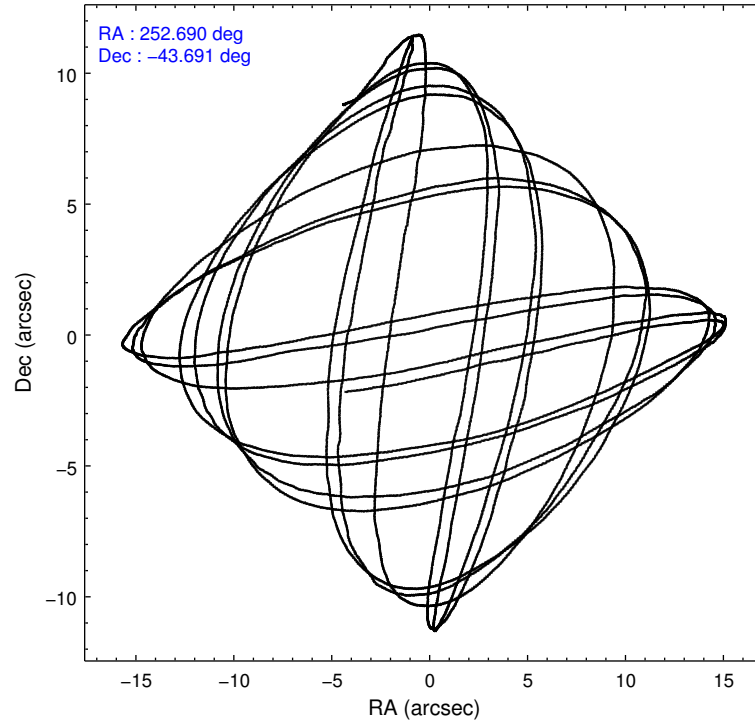
	ccd 2	ccd 3	ccd 6	ccd 7	ccd 8
level 1 events	43024	45239	46733	61833	62284
rejected events	37862	37652	40858	34525	45248
rejected %	88%	83%	87%	55%	72%

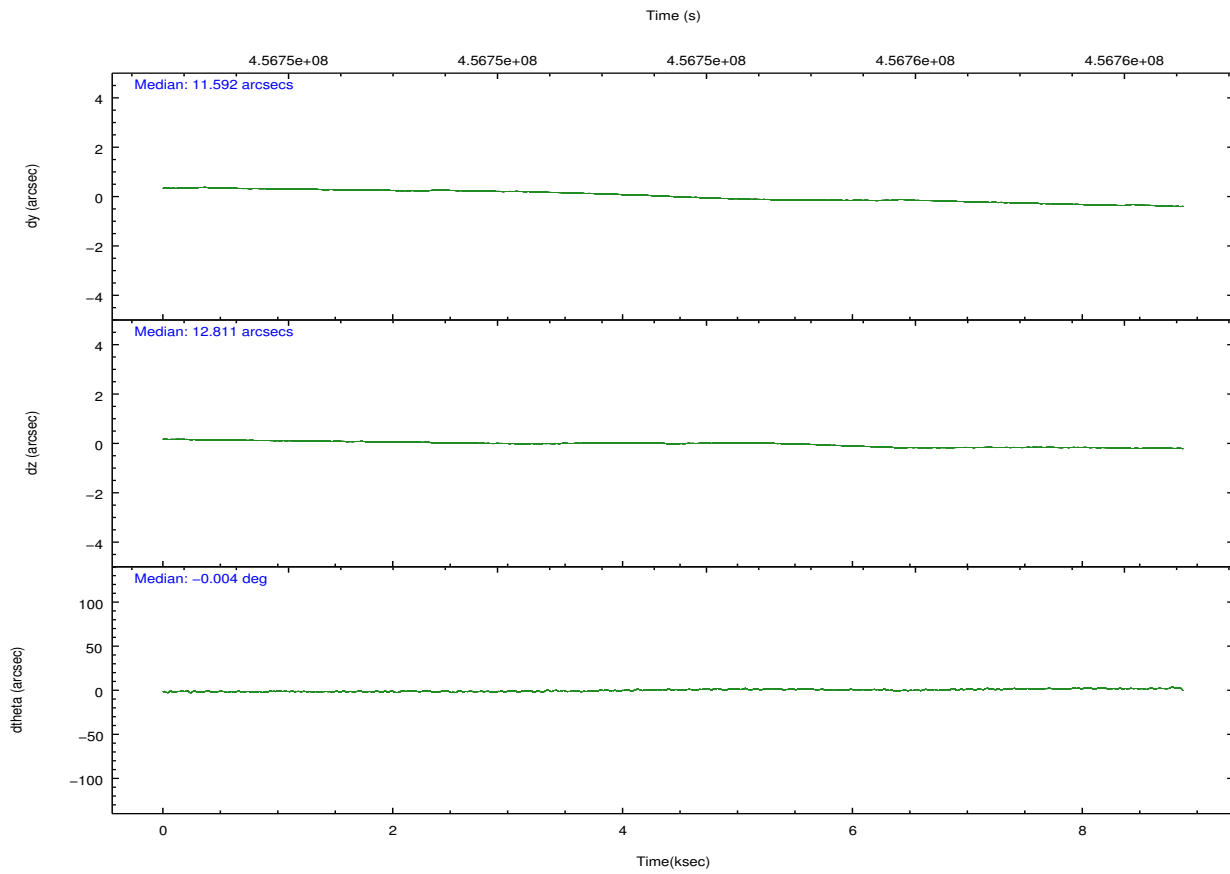
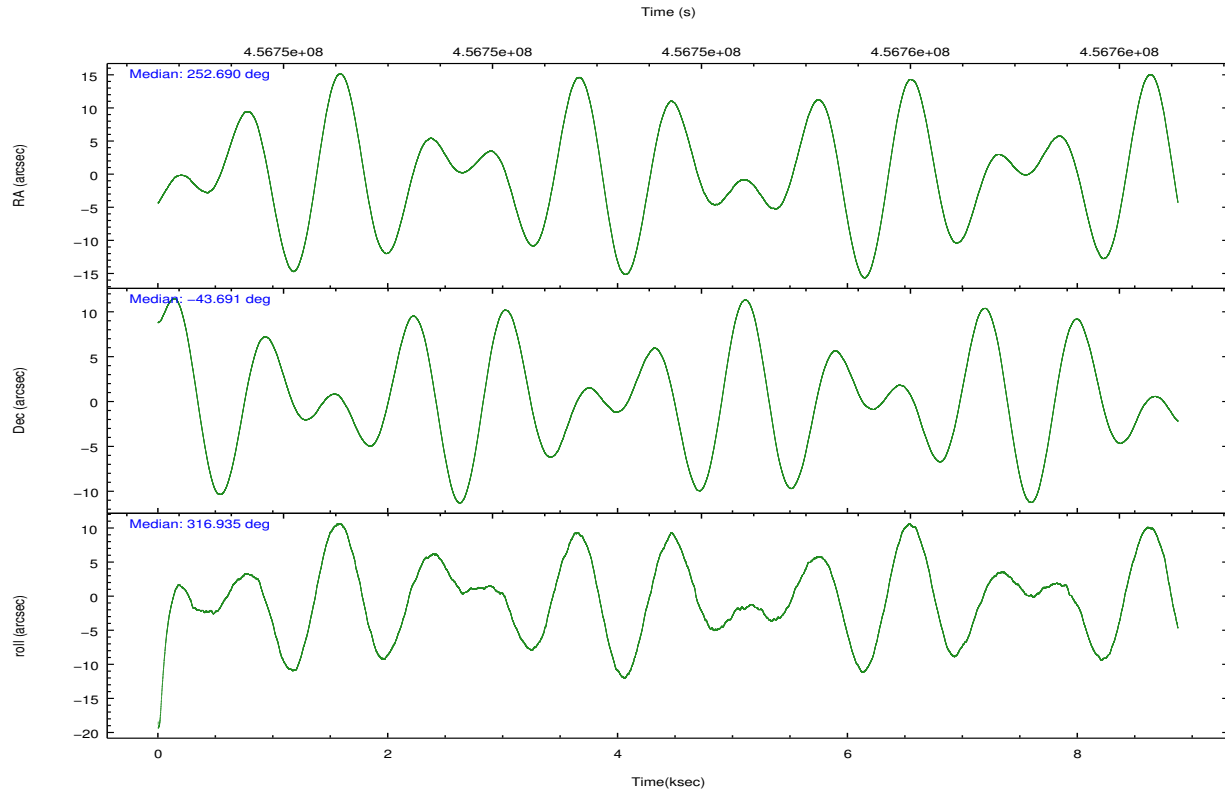
	ccd 2	ccd 3	ccd 6	ccd 7	ccd 8
grade 0 events	1929	3456	2120	2512	4978
	4%	7%	4%	4%	7%
grade 1 events	33	28	28	79	37
	0%	0%	0%	0%	0%
grade 2 events	1248	1469	1308	5568	4001
	2%	3%	2%	9%	6%
grade 3 events	518	677	561	2327	1705
	1%	1%	1%	3%	2%
grade 4 events	563	673	599	2356	1643
	1%	1%	1%	3%	2%
grade 5 events	1943	2378	2367	6383	3374
	4%	5%	5%	10%	5%
grade 6 events	905	1314	1289	14557	4710
	2%	2%	2%	23%	7%
grade 7 events	35885	35244	38461	28051	41836
	83%	77%	82%	45%	67%

## 2.2 Compared Parameters

Parameter	Planned	Actual	Parameter	Planned	Actual
Instrument	ACIS	ACIS	Obspar format version number	7	7
Detector	ACIS-23678	ACIS-23678	Obspar file type	PREDICTED	ACTUAL
Grating	NONE	NONE	Obspar update status	NONE	UPDATED
Data mode	VFAINT	VFAINT	Number of optional ACIS chips dropped	0	0
Observation mode	POINTING	POINTING	On-chip summing requested	N	N
[deg] Pointing RA	252.653359	252.6903803332317	Subarray requested	NONE	NONE
[deg] Pointing Dec	-43.685311	-43.69109138603977	Alternating exposures requested	N	N
[deg] Pointing Roll	316.758872	316.9410574154583	[s] Primary exposure time	0.000000	3.1
[mm] SIM focus pos	-0.684267	-0.6828225247311905			
[mm] SIM defocus	0	0.001444936568705701			
[mm] SIM translation stage pos	-190.132523	-190.1400660498719			
[mm] SIM translation stage offset	0	0.00754346686406393			
[s] Observation start time (MET)	456750124.184000	456748478.66186			
Observation start date	2012-06-22T11:00:58	2012-06-22T10:34:38			
[s] Observation end time (MET)	456758124.184000	456758917.26242			
Observation end date	2012-06-22T13:14:18	2012-06-22T13:28:37			
Read mode	TIMED	TIMED			

## 2.3 Aspect



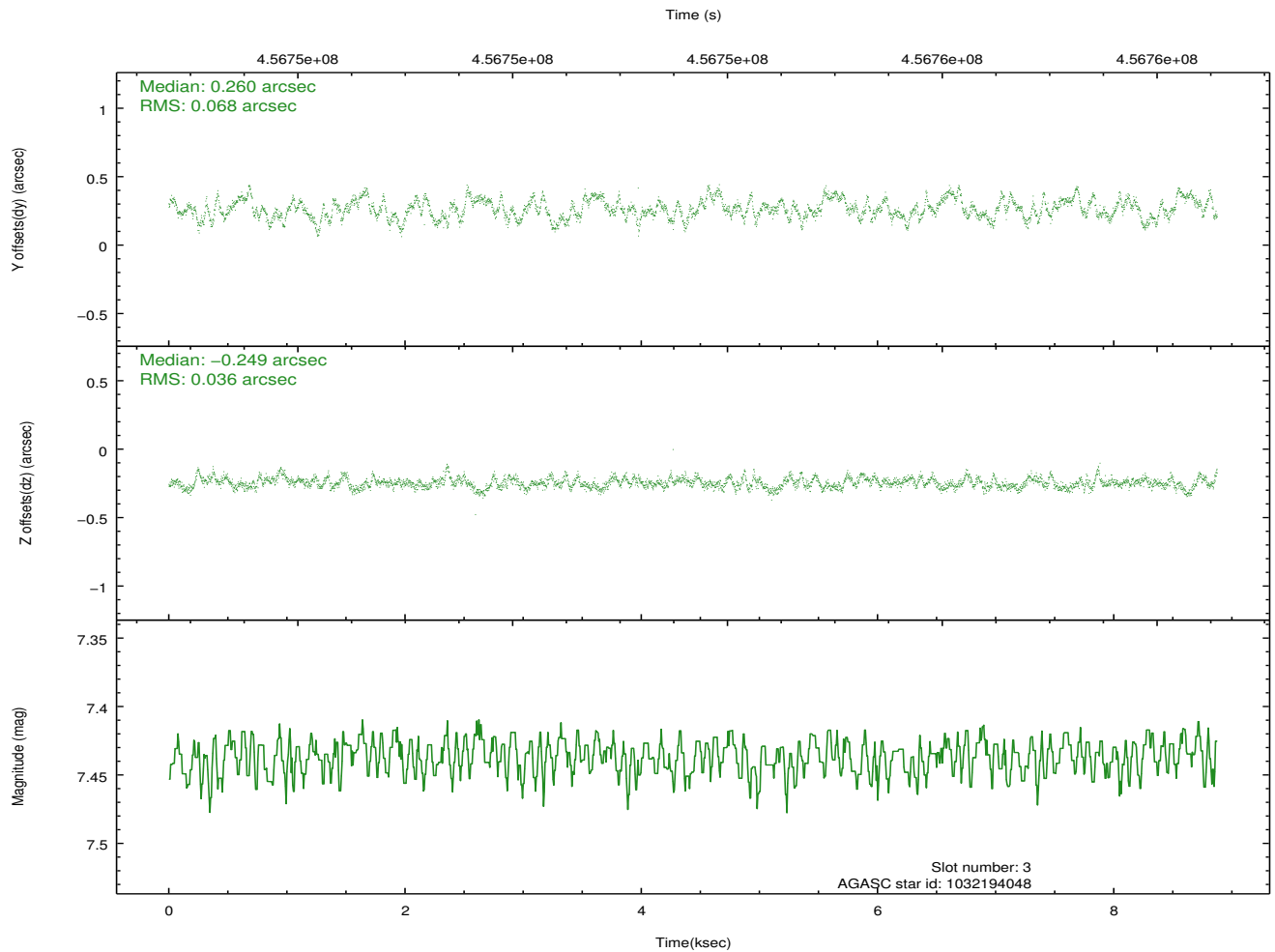
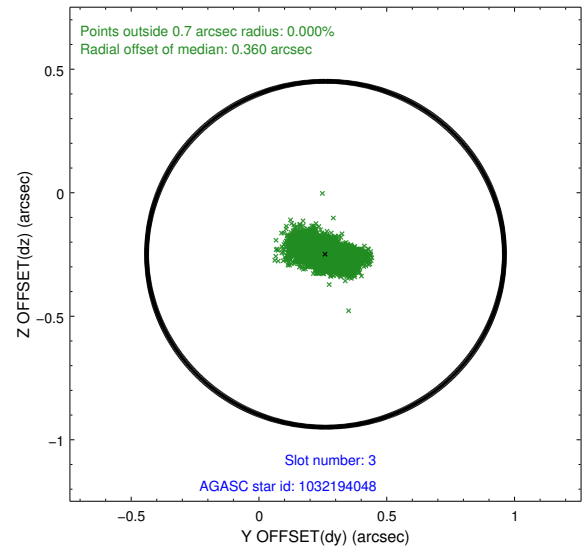
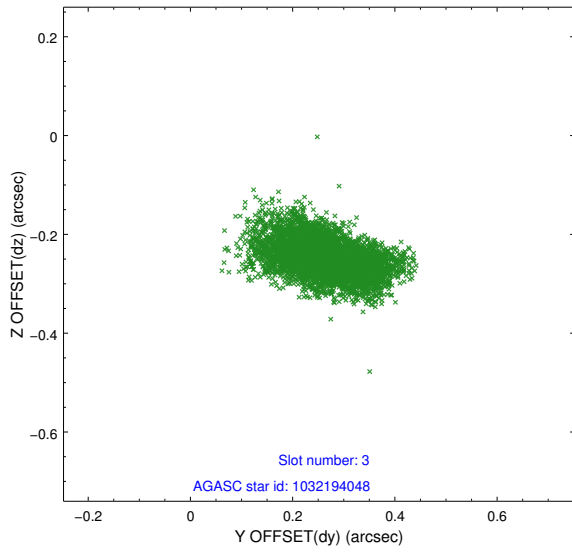


### Slot Statistics

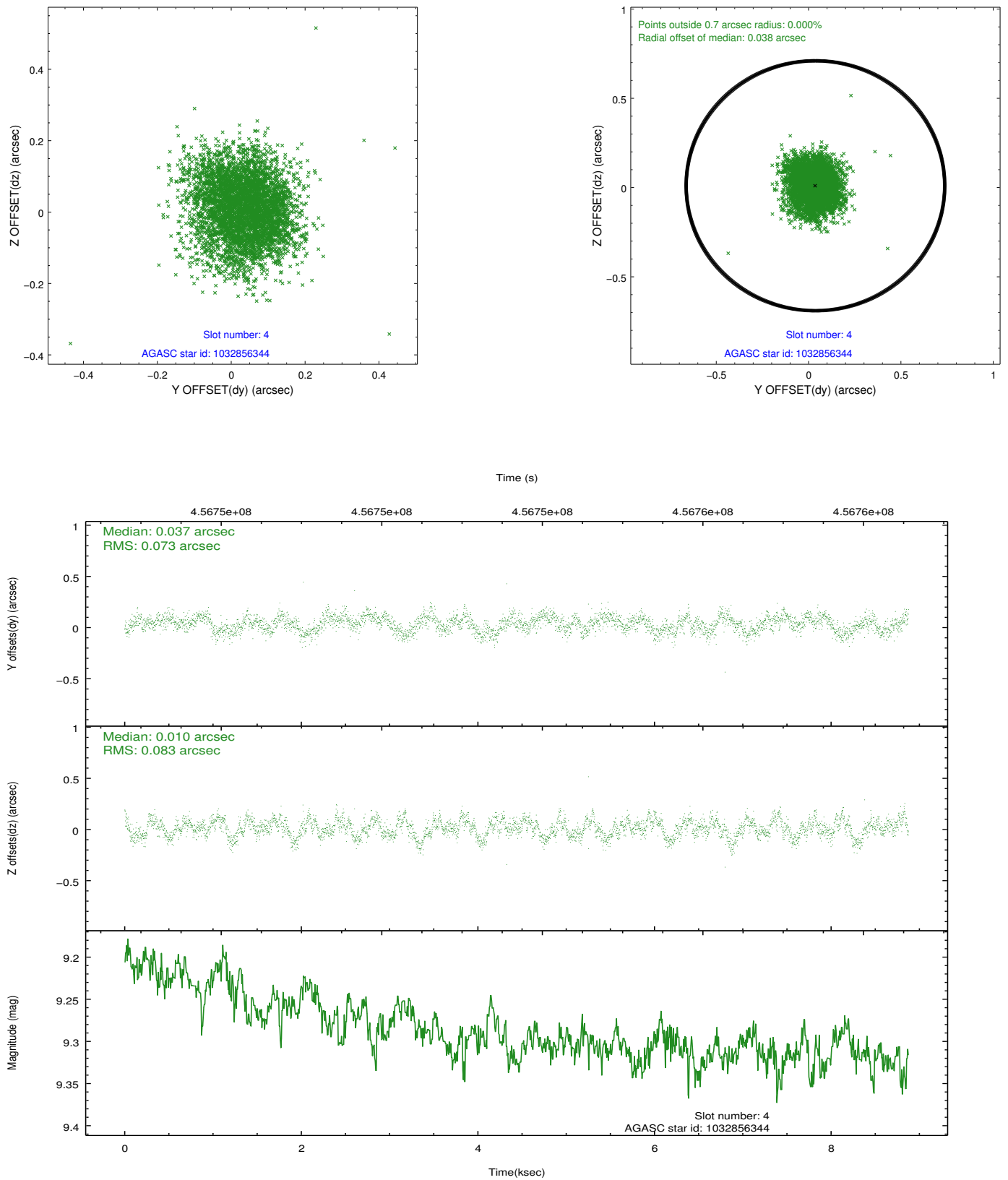
slot	status	id	mag	n_pts	med_dy	med_dz	dr1	dr2	ra	dec	mean_y	mean_z
0	FID	ACIS-S-2	6.92	2165	0.008	-0.032	0.009	0.014	0.000000	0.000000	-764.47	-1734.13
1	FID	ACIS-S-5	7.05	2165	-0.079	0.021	0.009	0.015	0.000000	0.000000	-1817.96	167.25
2	FID	ACIS-S-6	7.16	2165	0.045	0.019	0.006	0.011	0.000000	0.000000	396.50	811.86
3	GUIDE	1032194048	7.44	4329	0.260	-0.249	0.083	0.136	252.483207	-43.107423	-1750.22	1208.21
4	GUIDE	1032856344	9.30	4326	0.037	0.010	0.116	0.188	253.308302	-43.749430	1403.35	993.98
5	GUIDE	1032867928	8.33	4330	-0.126	0.079	0.069	0.111	253.057857	-43.542782	419.50	1094.91
6	GUIDE	1032868824	9.19	4322	-0.086	0.062	0.100	0.166	252.602108	-44.023242	737.84	-977.38
7	GUIDE	1032727272	8.38	4328	-0.084	0.101	0.083	0.124	251.947645	-43.938369	-702.53	-1923.26

## 2.4 Star Slots

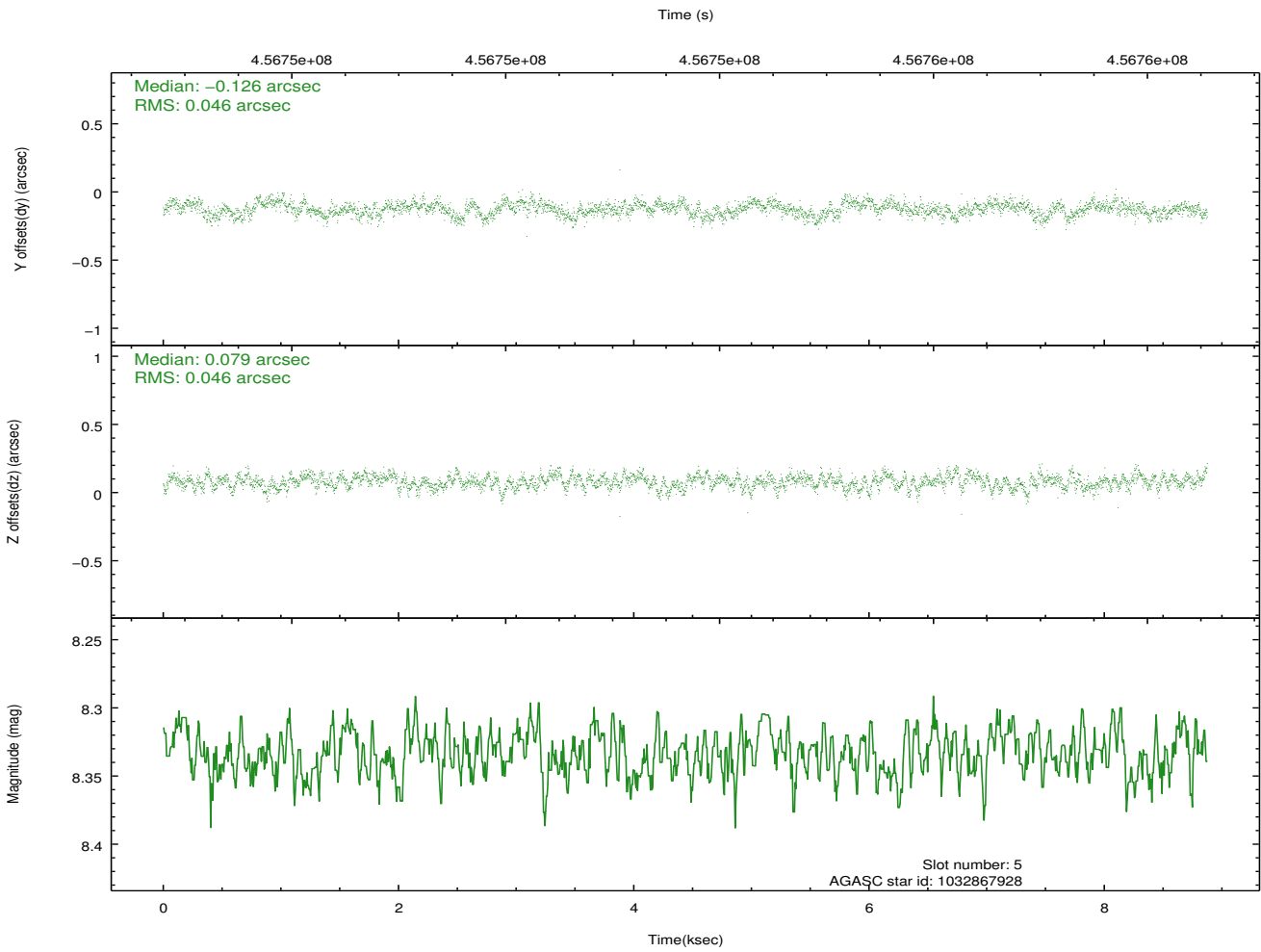
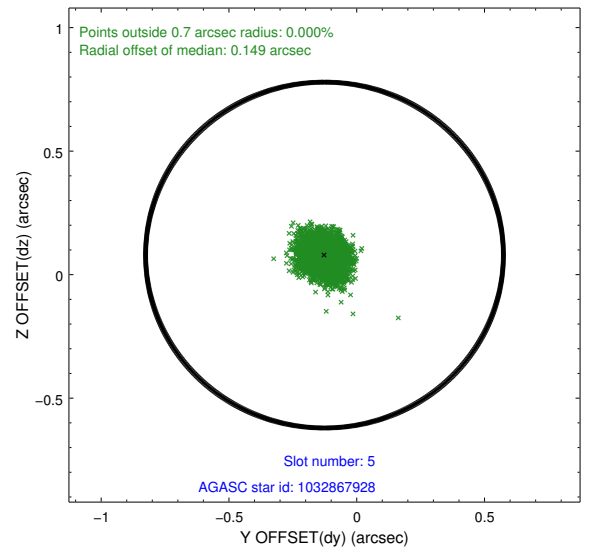
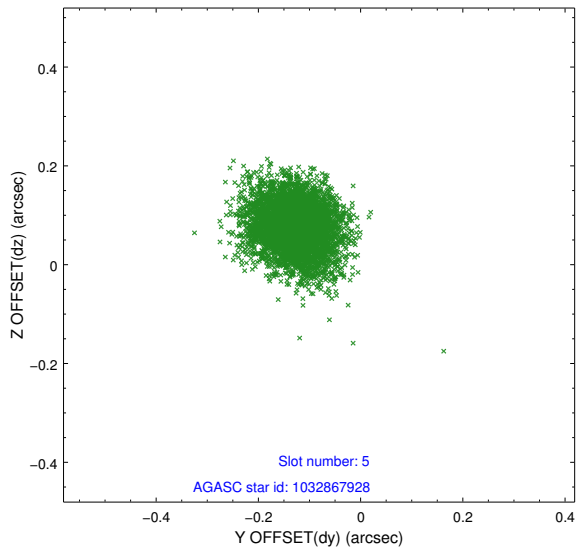
### 2.4.1 Slot 3



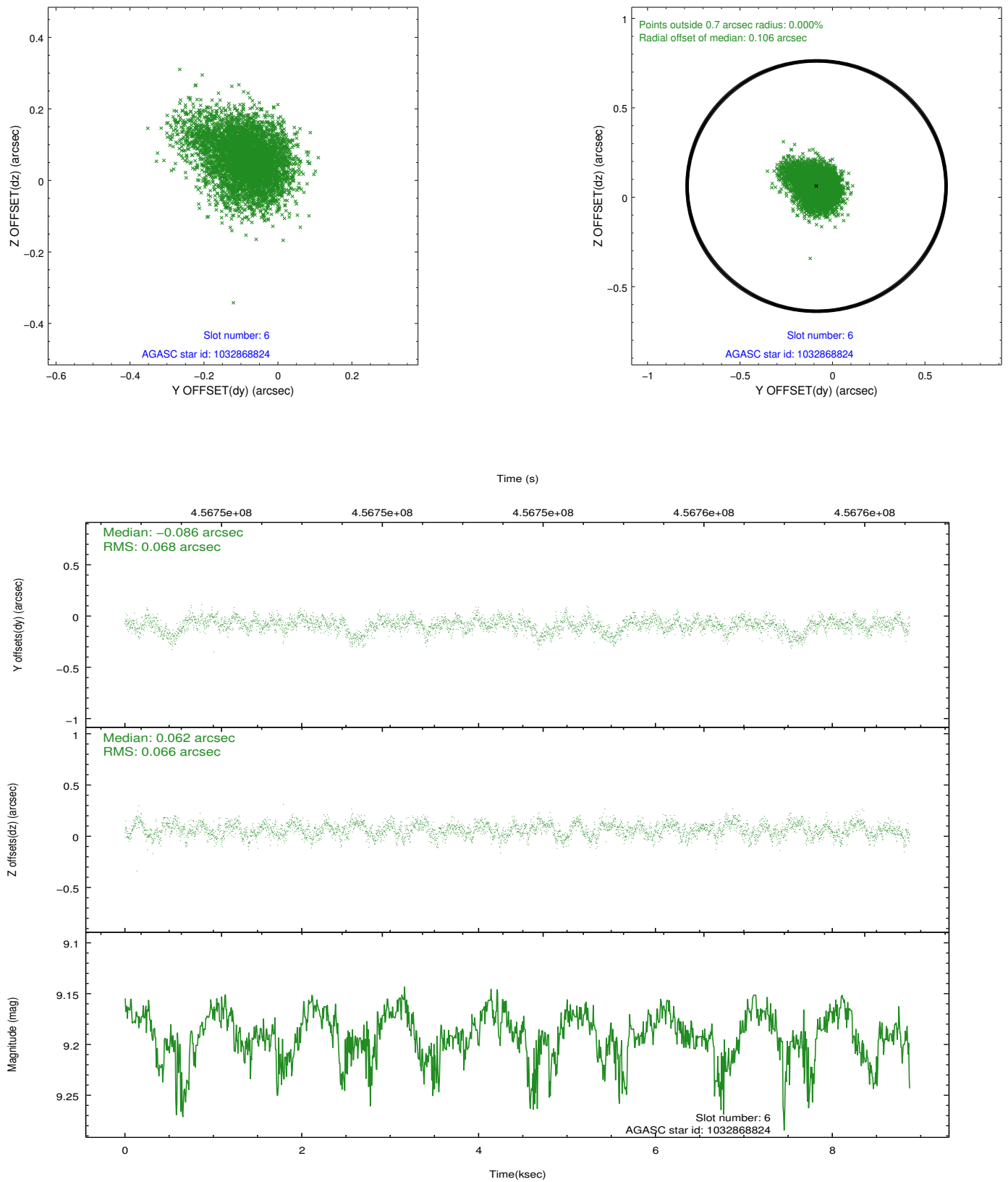
## 2.4.2 Slot 4



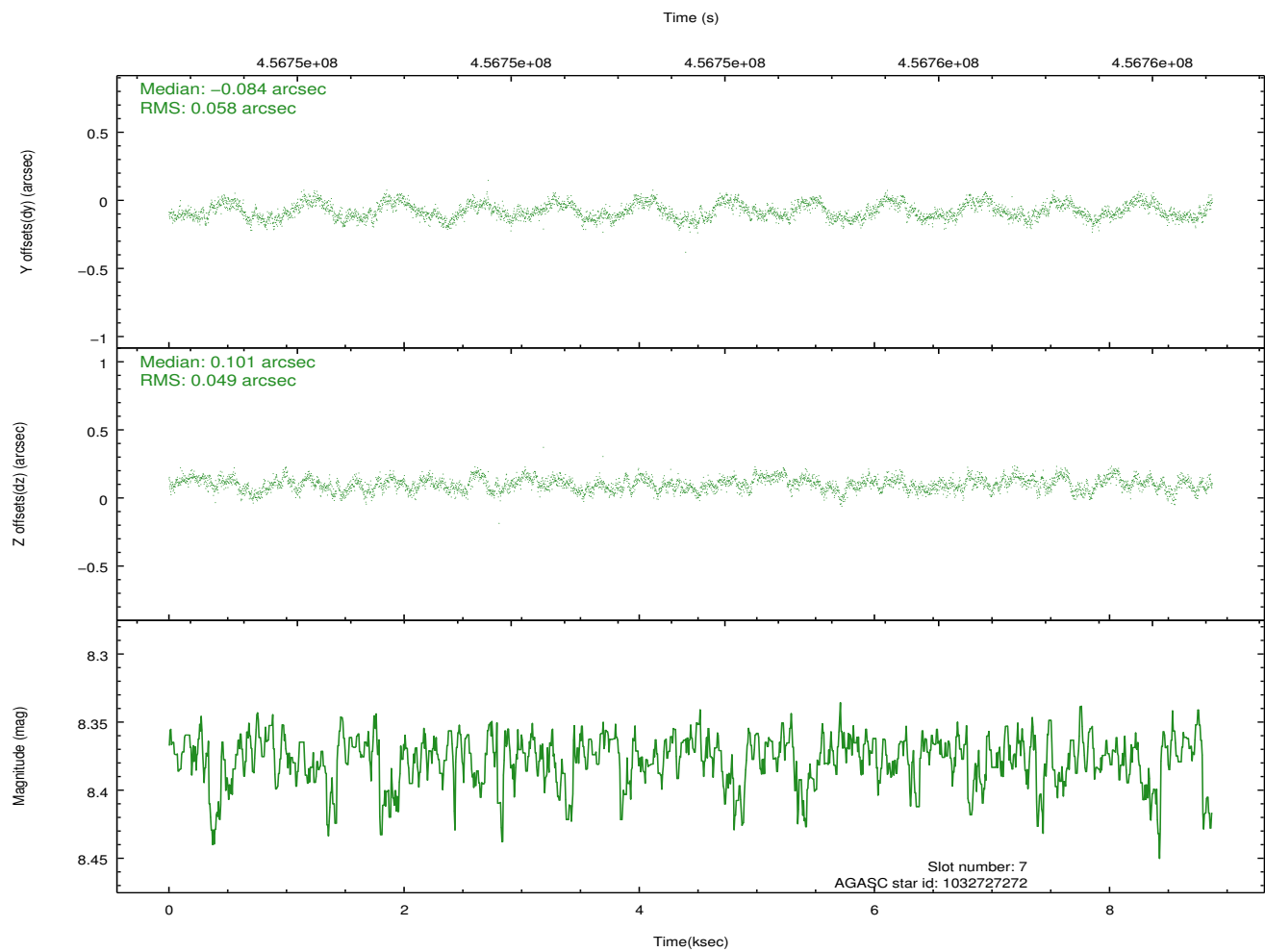
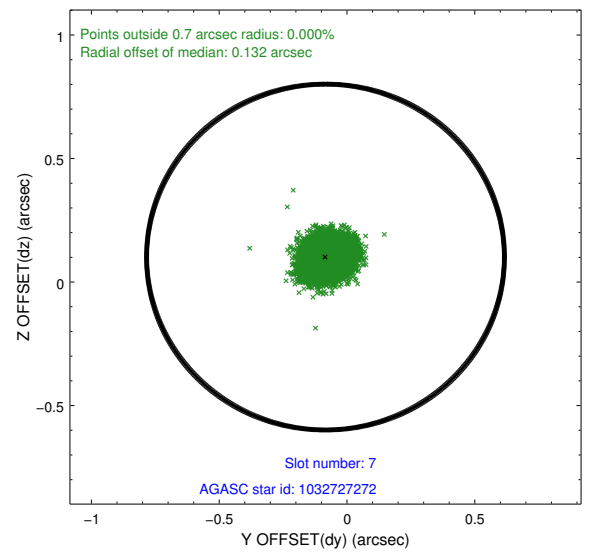
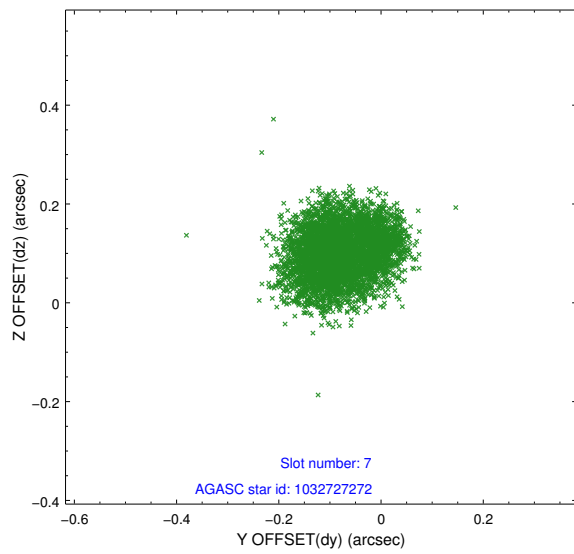
### 2.4.3 Slot 5



## 2.4.4 Slot 6

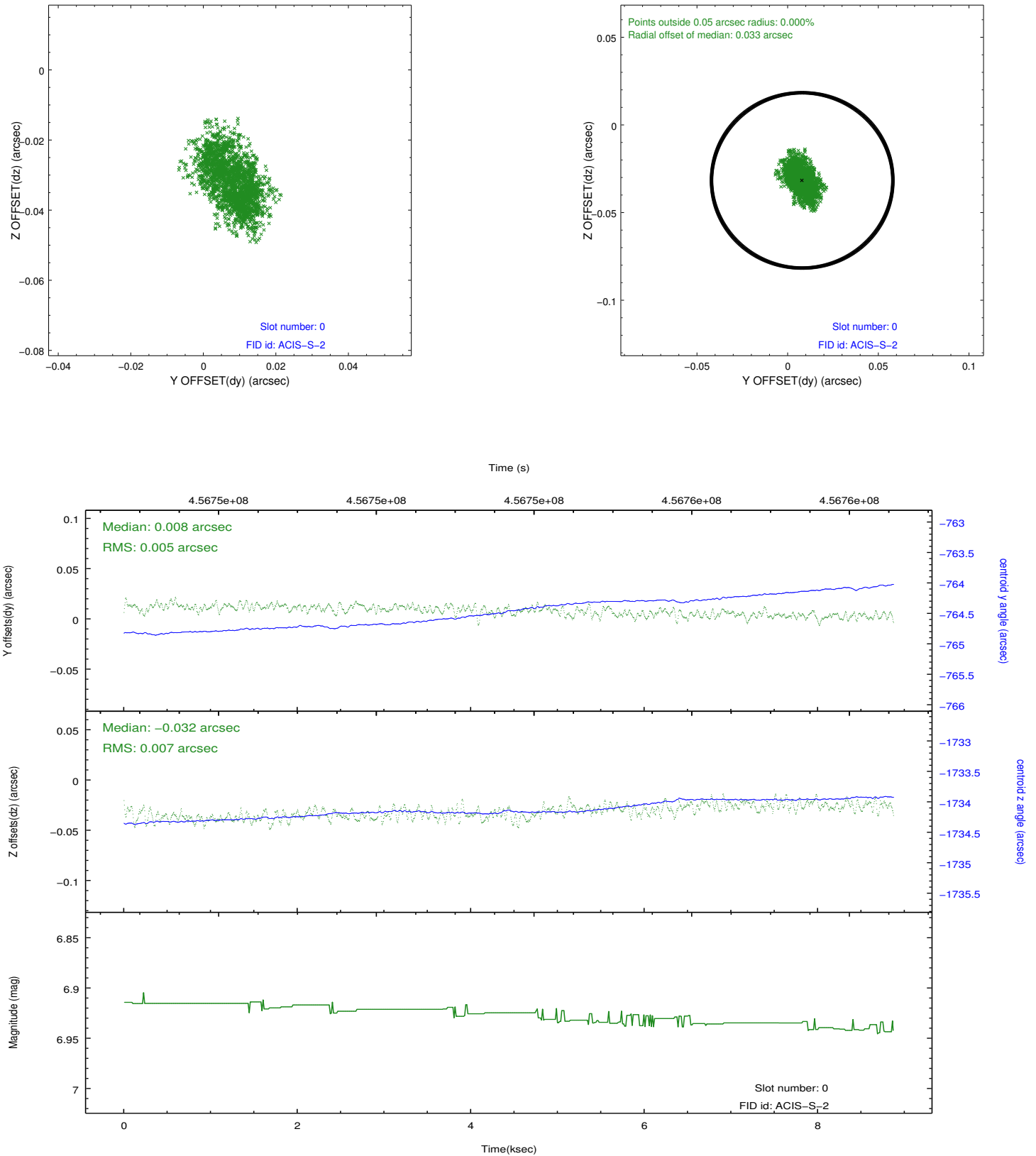


## 2.4.5 Slot 7

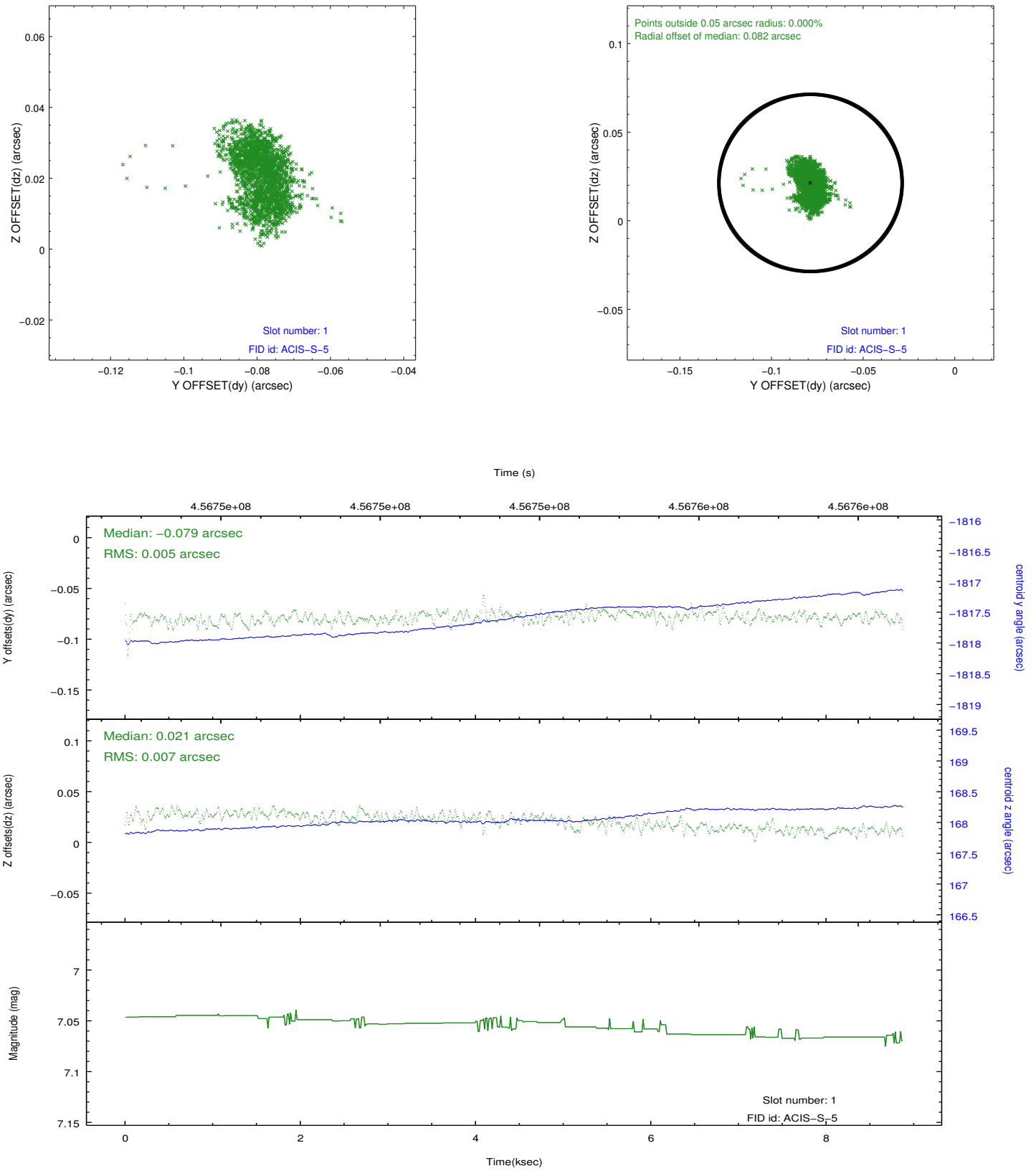


## 2.5 FID Slots

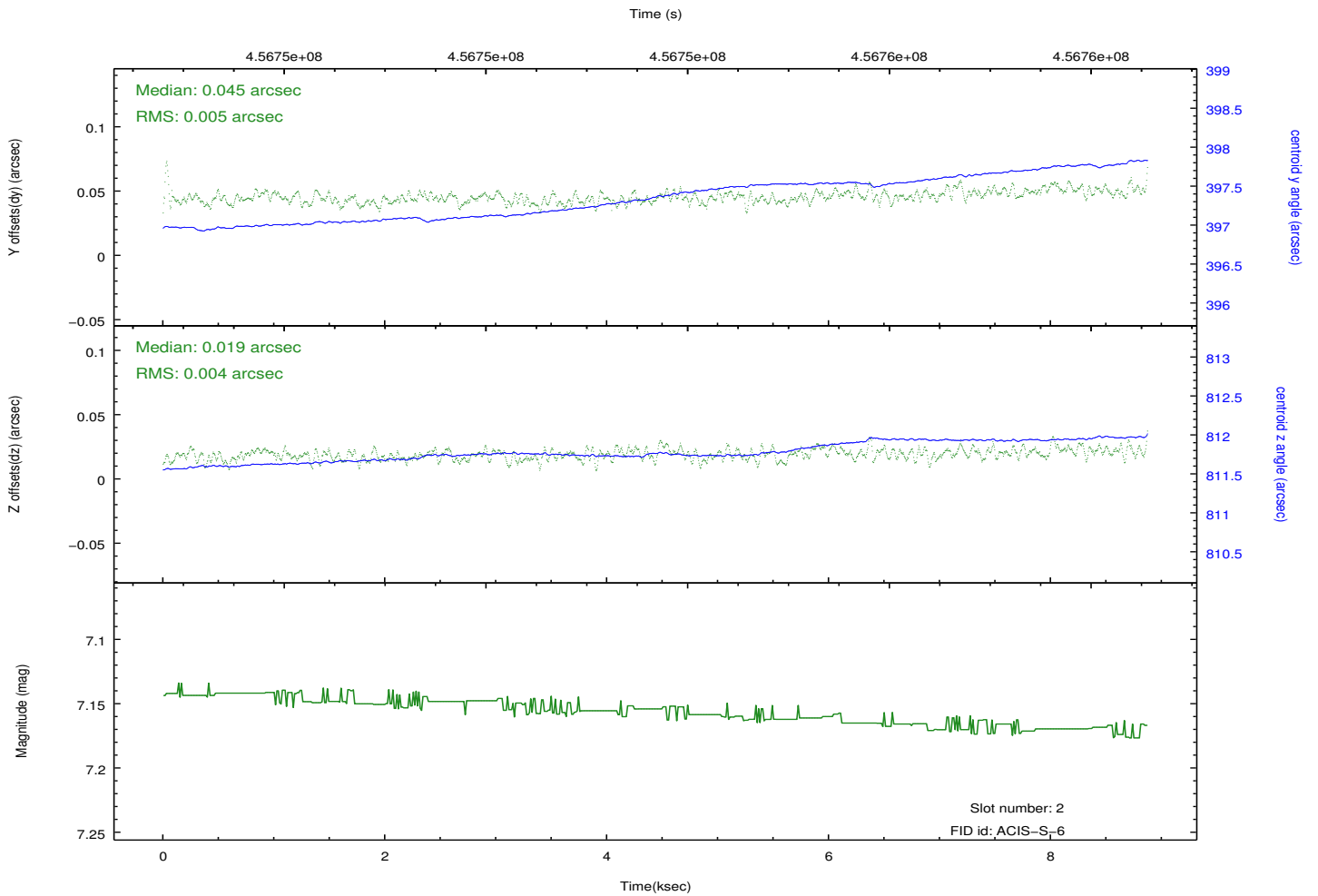
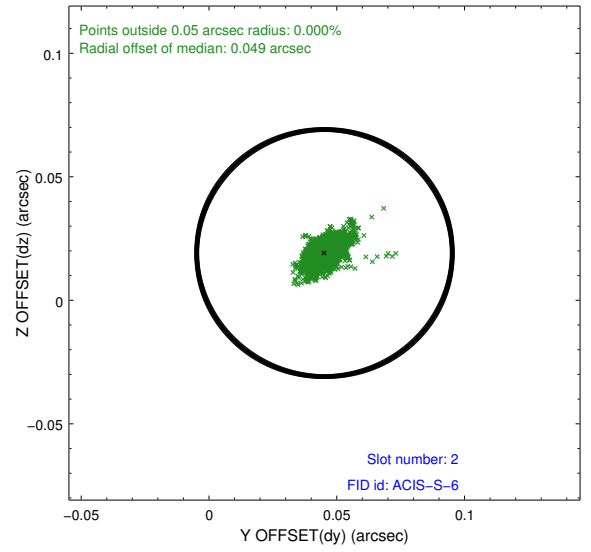
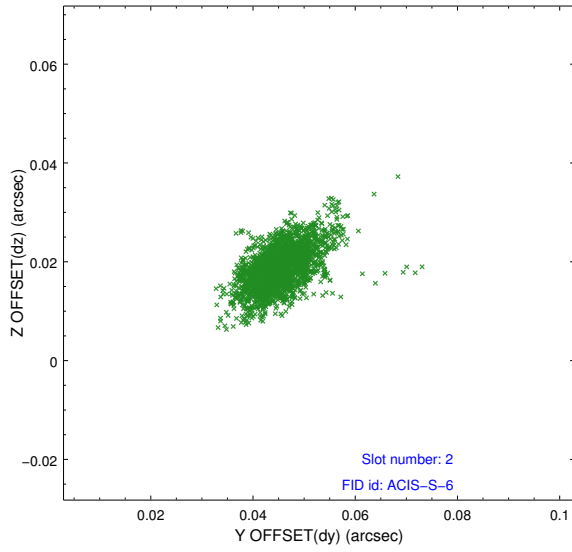
### 2.5.1 Slot 0



## 2.5.2 Slot 1



### 2.5.3 Slot 2



## A Summary

### A.1 Status

V&V Scientist	Joy Nichols
V&V Date (YYYY-MM-DD)	2012.06.25
V&V Edition	1
V&V Disposition and Status	OK
V&V Charge Time	8.0651967595816

### A.2 Comments