

V&V Reference Report

L2 ASCDS Version : 10.1.1

Observation 14657 - L2 Version 2
Chandra X-Ray Center

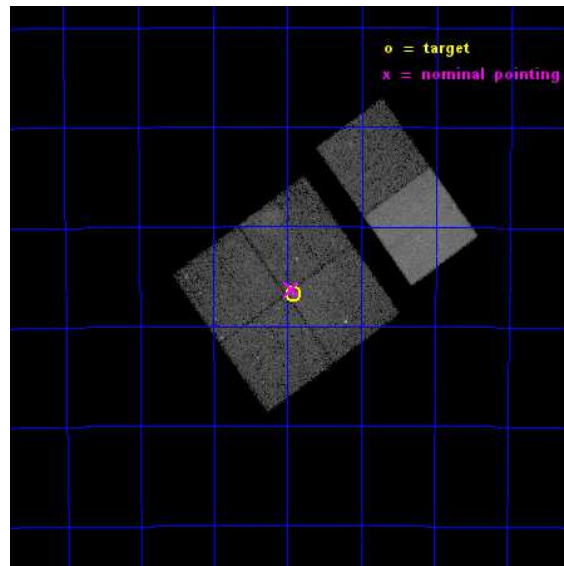
L2 Processing Date : Dec 8 2014

Contents

1	Front	2
2	OBI	3
2.1	OBI	3
2.1.1	Images	3
2.1.2	Bias	3
2.1.3	Parameters	4
2.1.4	Events	4
2.2	Compared Parameters	5
2.3	Aspect	6
2.4	Star Slots	9
2.4.1	Slot 3	9
2.4.2	Slot 4	10
2.4.3	Slot 5	11
2.4.4	Slot 6	12
2.4.5	Slot 7	13
2.5	FID Slots	14
2.5.1	Slot 0	14
2.5.2	Slot 1	15
2.5.3	Slot 2	16
A	Summary	17
A.1	Status	17
A.2	Comments	17

1 Front

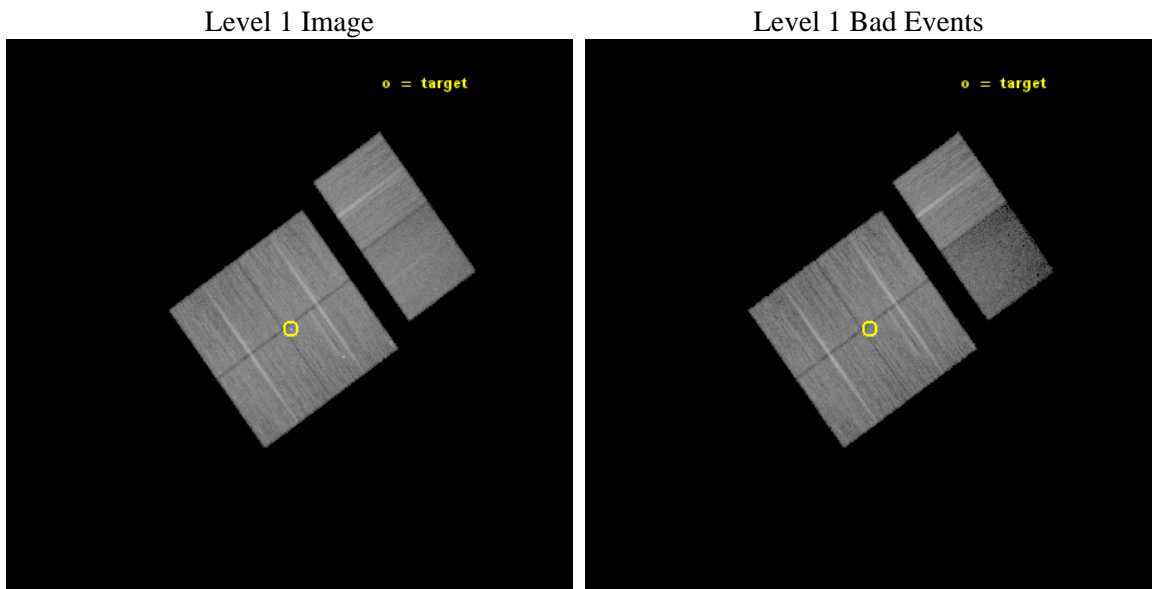
seq_num	401490	Sequence number
obs_id	14657	Observation id
title	Mysterious extended emission near the gamma-ray binary 1FLG J1018.6-5856	Proposal title
observer	Dr. George Pavlov	Principal investigator
object	1FLG J1018.6-5856	Source name
dtycycle	0	
cycle	P	events from which exps? Prim/Second/Both
ra_targ	154.731667	Observer's specified target RA [deg]
dec_targ	-58.946139	Observer's specified target Dec [deg]
ra_nom	154.73665130261	Nominal RA [deg]
dec_nom	-58.938471117277	Nominal Dec [deg]
roll_nom	54.212962897553	Nominal Roll [deg]
revision	2	Processing version of data
ontime	44966.358862162	Sum of GTIs [s]
livetime	44396.967750758	Livetime [s]
ontime0	44963.117871821	Sum of GTIs [s]
ontime1	44966.358852208	Sum of GTIs [s]
ontime2	44969.599832535	Sum of GTIs [s]
ontime3	44966.358862162	Sum of GTIs [s]
ontime6	44969.599832535	Sum of GTIs [s]
ontime7	44969.599832535	Sum of GTIs [s]
l2events	171791	Number of level 2 events



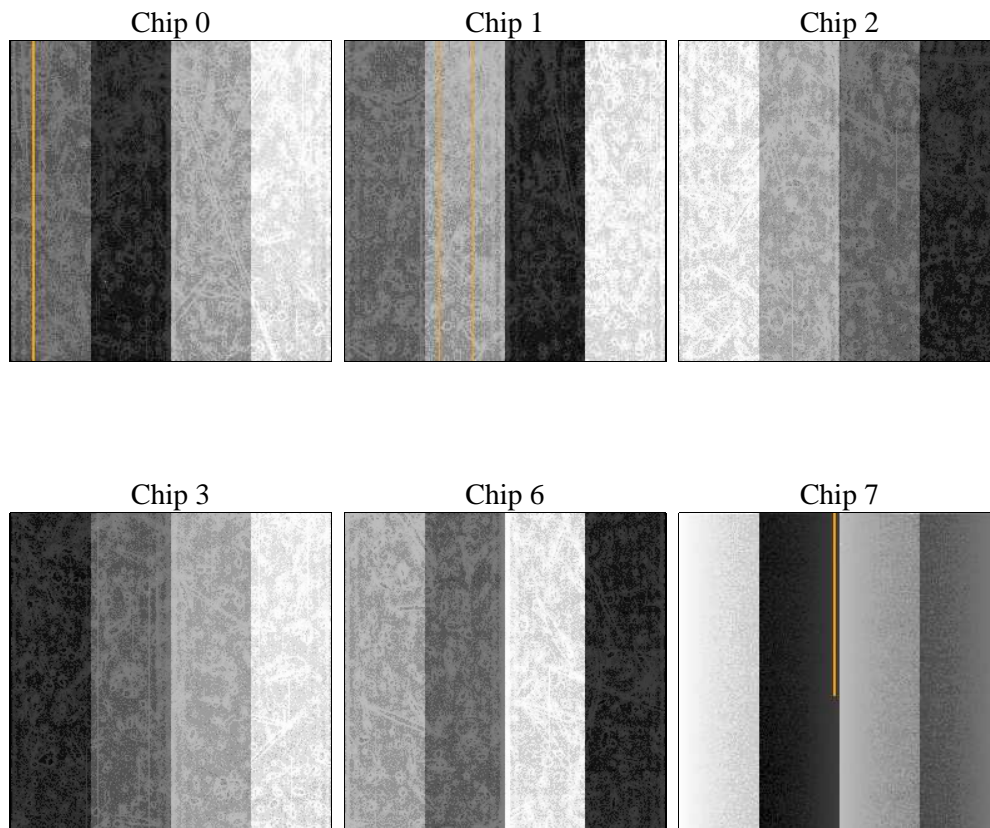
2 OBI

2.1 OBI

2.1.1 Images



2.1.2 Bias



2.1.3 Parameters

obi_num	0	Obi number	sched_exp_time	45000.000000	[s] Scheduled observation exposure time
ascdsver	10.3.1	Processing system revision	ontime	44966.358862162	Sum of GTIs [s]
caldbver	4.6.4	 	ontime0	44963.117871821	Sum of GTIs [s]
date	2014-12-08T12:20:07	Date and time of file creation	ontime1	44966.358852208	Sum of GTIs [s]
revision	2	Processing version of data	ontime2	44969.599832535	Sum of GTIs [s]
			ontime3	44966.358862162	Sum of GTIs [s]
			ontime6	44969.599832535	Sum of GTIs [s]
			ontime7	44969.599832535	Sum of GTIs [s]
			l1events	967575	Number of level 1 events

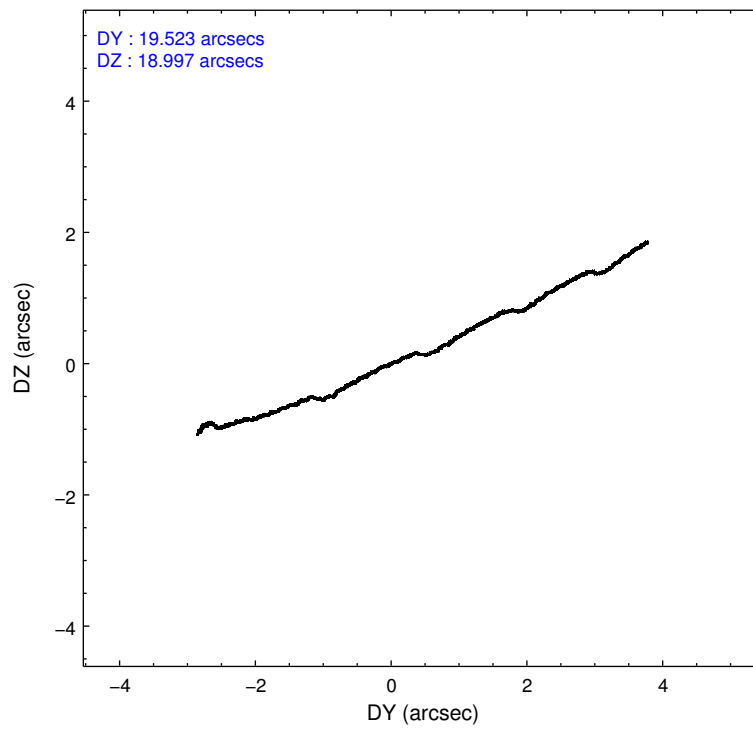
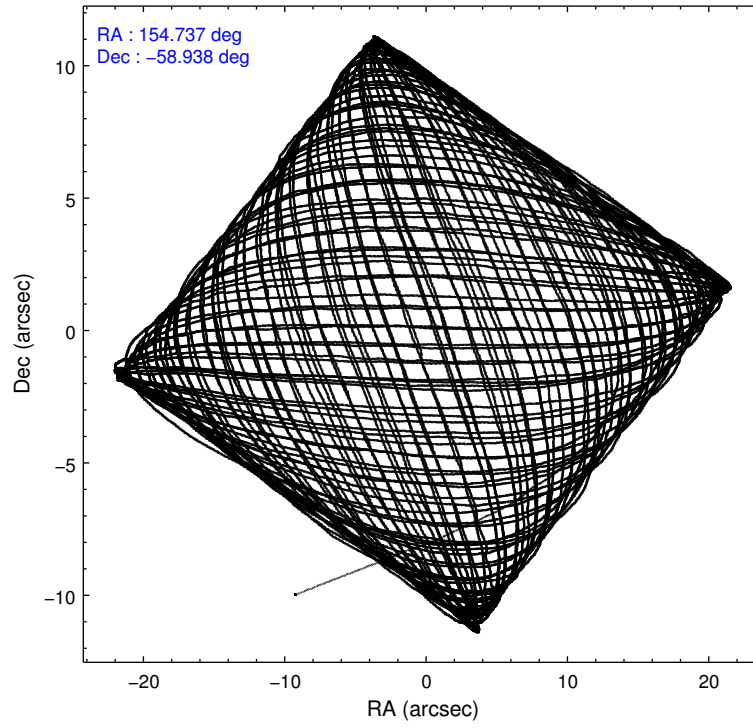
2.1.4 Events

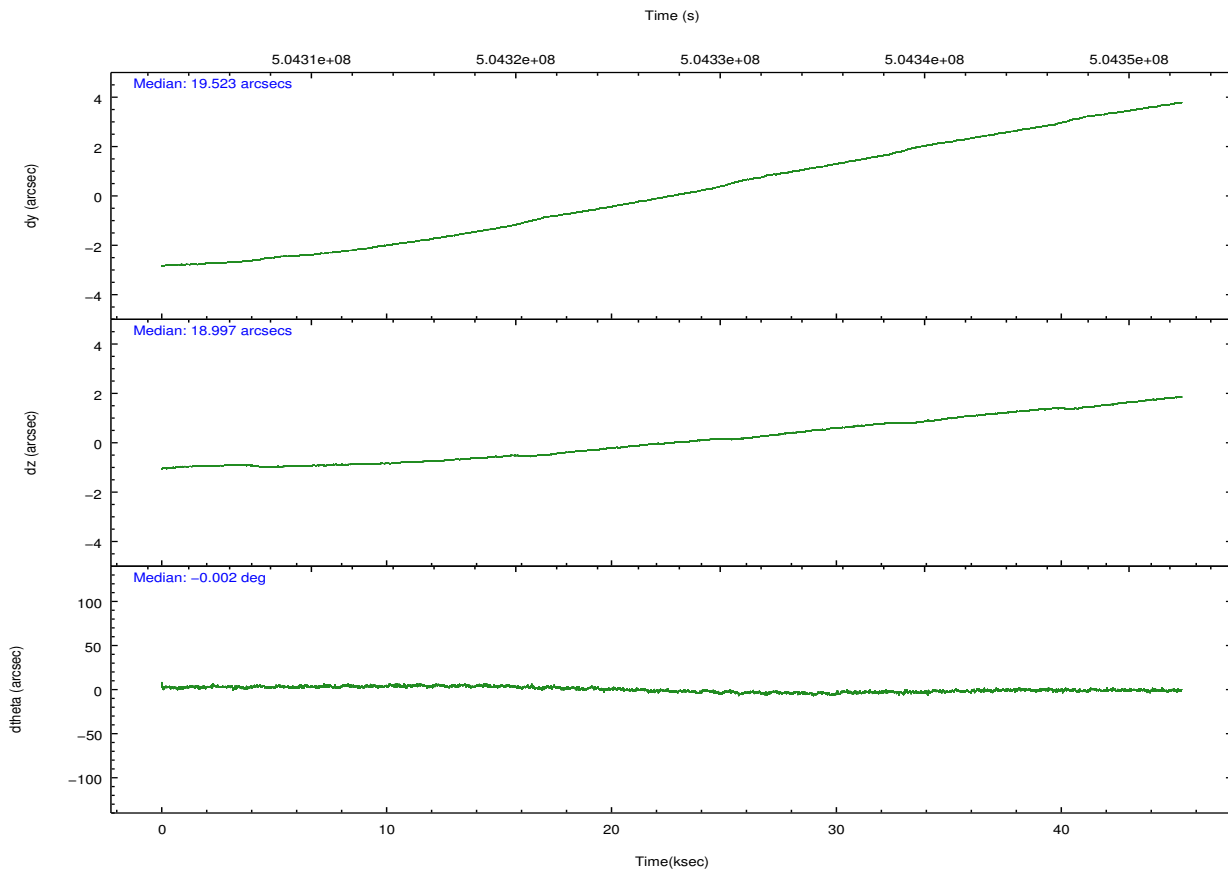
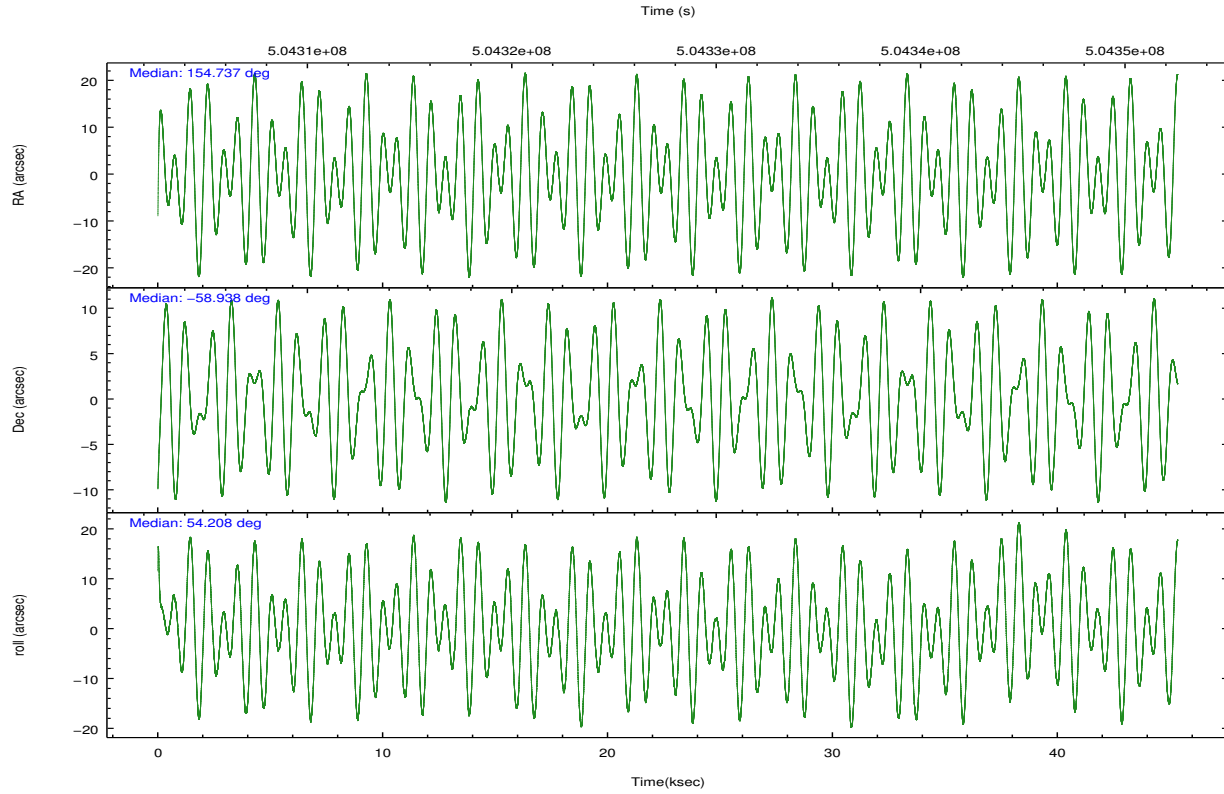
	ccd 0	ccd 1	ccd 2	ccd 3	ccd 6	ccd 7		ccd 0	ccd 1	ccd 2	ccd 3	ccd 6	ccd 7
level 1 events	153183	159797	177675	168697	174428	133795	grade 0 events	11065	10760	12408	14507	8663	10232
rejected events	130312	136474	153542	142264	154067	57997		7%	6%	6%	8%	4%	7%
rejected %	85%	85%	86%	84%	88%	43%	grade 1 events	103	100	102	212	108	331
								0%	0%	0%	0%	0%	0%
							grade 2 events	5139	4970	5055	4776	4610	18549
								3%	3%	2%	2%	2%	13%
							grade 3 events	1935	2092	1872	2048	1944	7207
								1%	1%	1%	1%	1%	5%
							grade 4 events	1850	2080	1942	2057	1837	7200
								1%	1%	1%	1%	1%	5%
							grade 5 events	4157	4807	3858	4950	4966	13907
								2%	3%	2%	2%	2%	10%
							grade 6 events	2885	3424	2859	3048	3311	32619
								1%	2%	1%	1%	1%	24%
							grade 7 events	126049	131564	149579	137099	148989	43750
								82%	82%	84%	81%	85%	32%

2.2 Compared Parameters

Parameter	Planned	Actual	Parameter	Planned	Actual
Instrument	ACIS	ACIS	Obspar format version number	7	7
Detector	ACIS-012367	ACIS-012367	Obspar file type	PREDICTED	ACTUAL
Grating	NONE	NONE	Obspar update status	NONE	UPDATED
Data mode	VFAINT	VFAINT	CCD I0 on	Y	Y
Observation mode	POINTING	POINTING	CCD I1 on	Y	Y
[deg] Pointing RA	154.731468	154.736651302612	CCD I2 on	Y	Y
[deg] Pointing Dec	-58.965852	-58.93847111727733	CCD I3 on	Y	Y
[deg] Pointing Roll	53.999830	54.21296289755334	CCD S0 on	N	N
[mm] SIM focus pos	-0.782348	-0.7809083437167272	CCD S1 on	N	N
[mm] SIM defocus	0	0.001439871863259334	CCD S2 on	O2	Y
[mm] SIM translation stage pos	-233.592463	-233.5874344608287	CCD S3 on	O1	Y
[mm] SIM translation stage offset	0	-0.005018542100998502	CCD S4 on	N	N
[s] Observation start time (MET)	504305313.184000	504304262.33509	CCD S5 on	N	N
Observation start date	2013-12-24T20:47:26	2013-12-24T20:31:02	Number of optional ACIS chips dropped	0	0
[s] Observation end time (MET)	504350313.184000	504351089.46266	On-chip summing requested	N	N
Observation end date	2013-12-25T09:17:26	2013-12-25T09:31:29	Subarray requested	NONE	NONE
Read mode	TIMED	TIMED	Alternating exposures requested	N	N
			[s] Primary exposure time	0.000000	3.2

2.3 Aspect





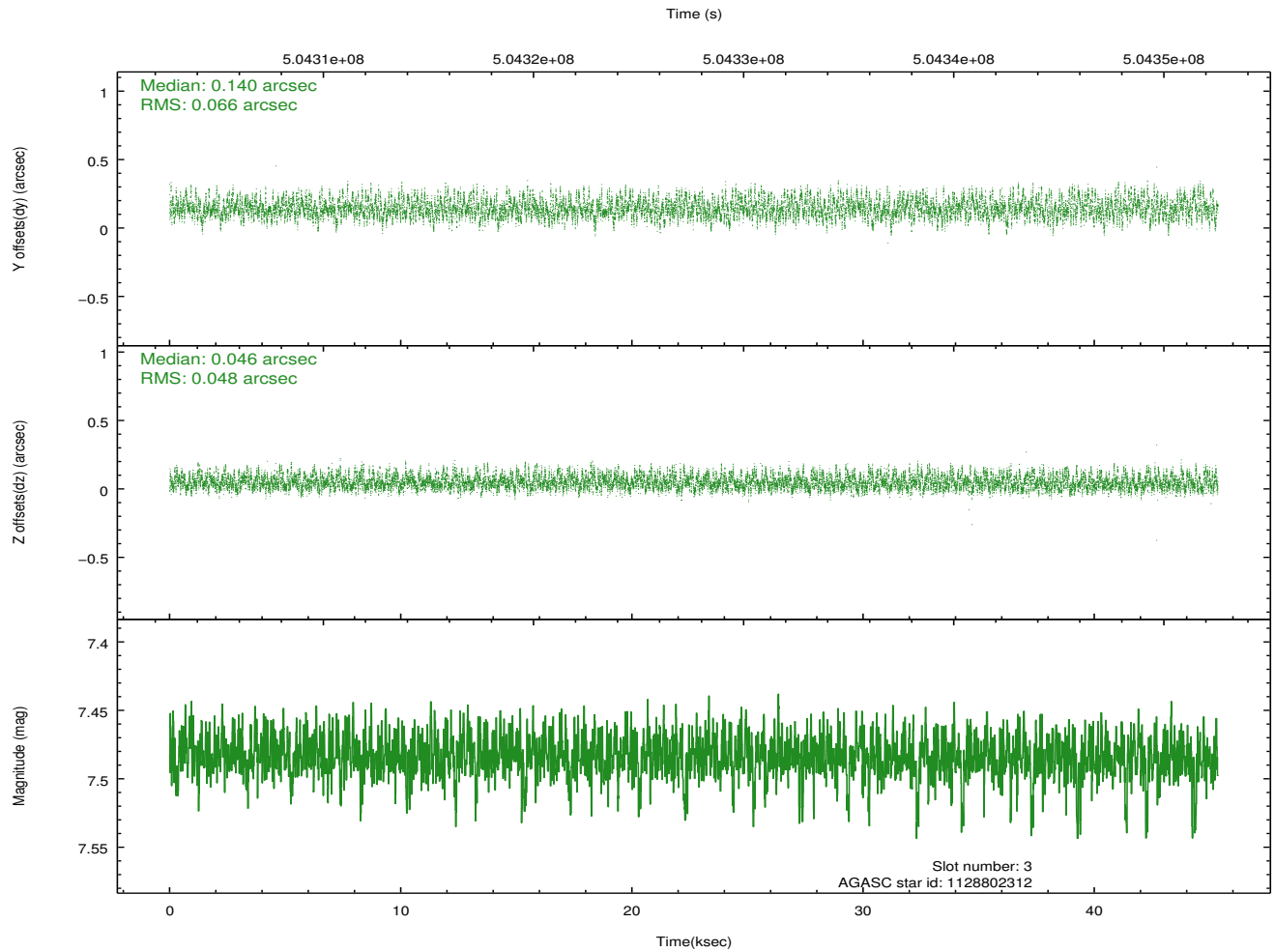
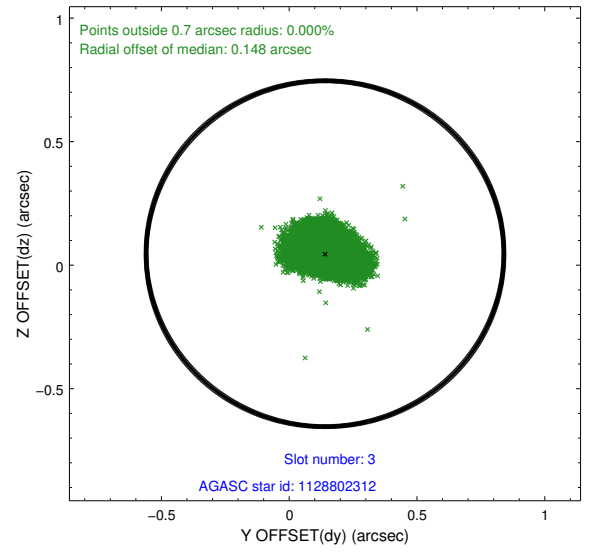
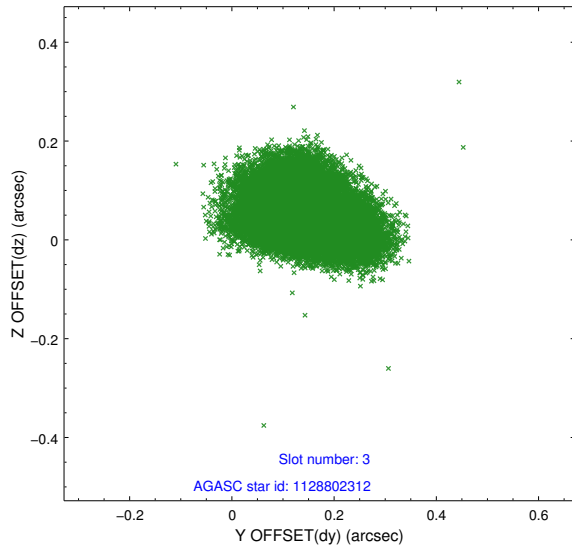
Slot Statistics

slot	status	used	id	mag	n_pts	med_dy	med_dz	dr1	dr2	ra	dec	mean_y	mean_z
0	FID		ACIS-I-1	7.04	11060	-0.068	0.033	0.020	0.047	0.000000	0.000000	919.59	-842.79
1	FID		ACIS-I-2	6.94	11059	-0.170	-0.097	0.021	0.051	0.000000	0.000000	-774.61	-849.35
2	FID		ACIS-I-4	6.98	11060	0.142	0.131	0.023	0.057	0.000000	0.000000	2139.69	1057.12
3	GUIDE	used	1128802312	7.48	22117	0.140	0.046	0.088	0.140	154.919596	-59.146092	-320.73	-662.49
4	GUIDE	used	1128802696	7.23	22119	-0.287	-0.236	0.072	0.117	155.284467	-58.483825	2012.03	175.61
5	GUIDE	used	1128803944	8.77	22109	-0.325	-0.271	0.101	0.162	154.436831	-58.433126	1224.08	1575.79
6	GUIDE	used	1128797920	7.73	22120	0.178	0.182	0.099	0.160	155.031931	-59.885084	-2358.76	-2384.41
7	GUIDE	used	1128811864	7.61	22116	0.289	0.275	0.072	0.115	155.133167	-59.636346	-1524.34	-2011.30

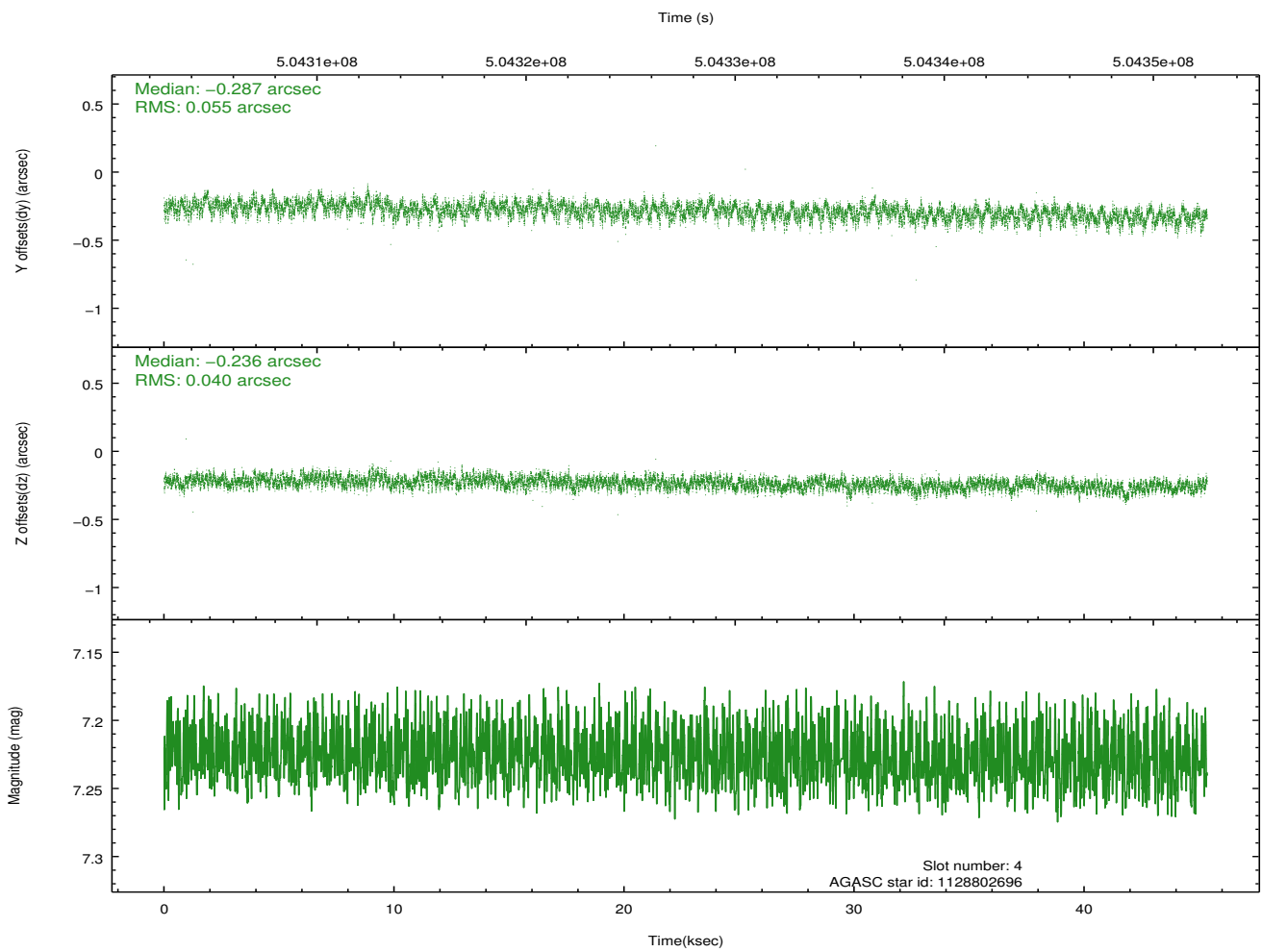
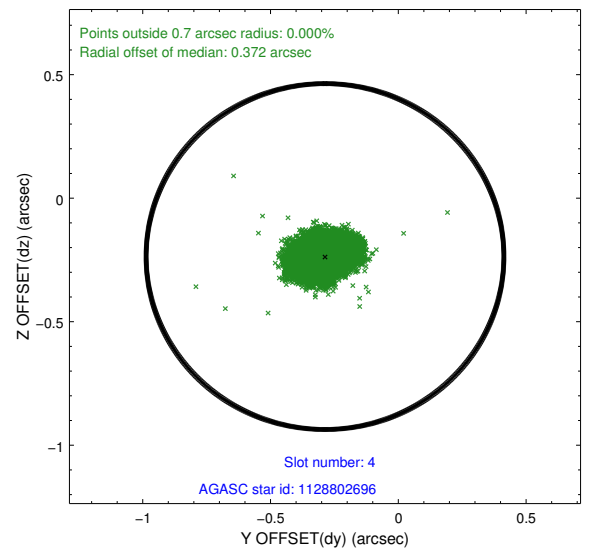
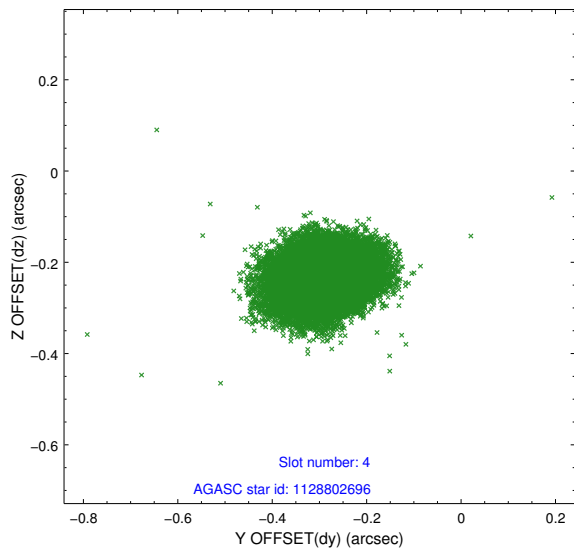
∞

2.4 Star Slots

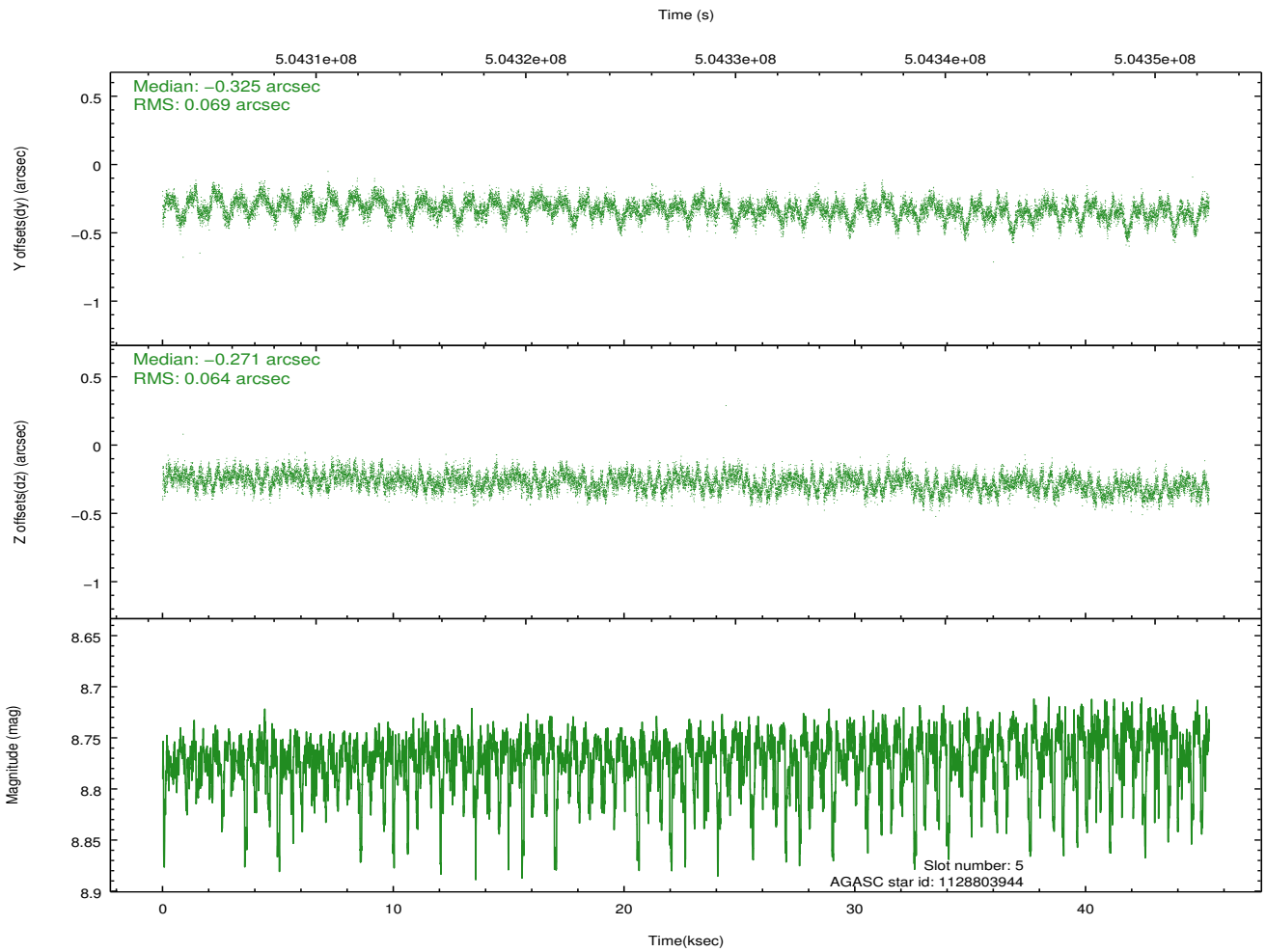
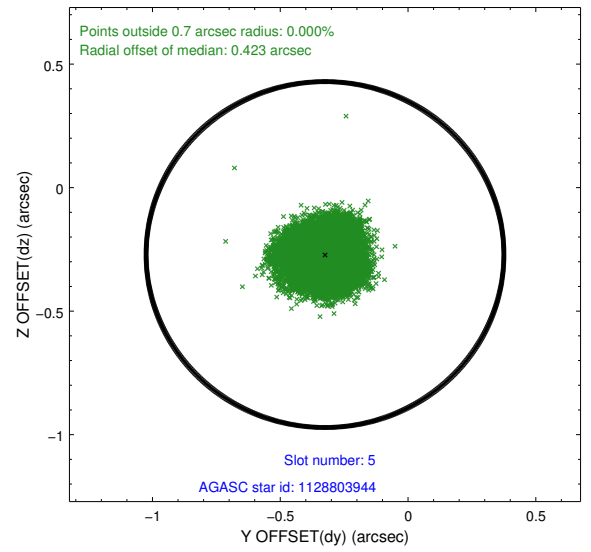
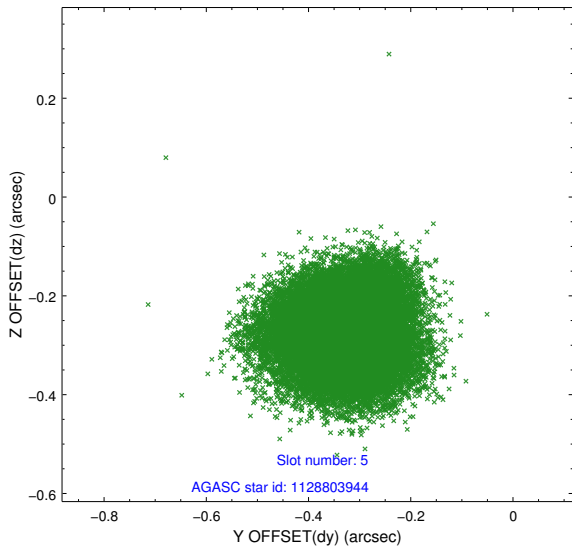
2.4.1 Slot 3



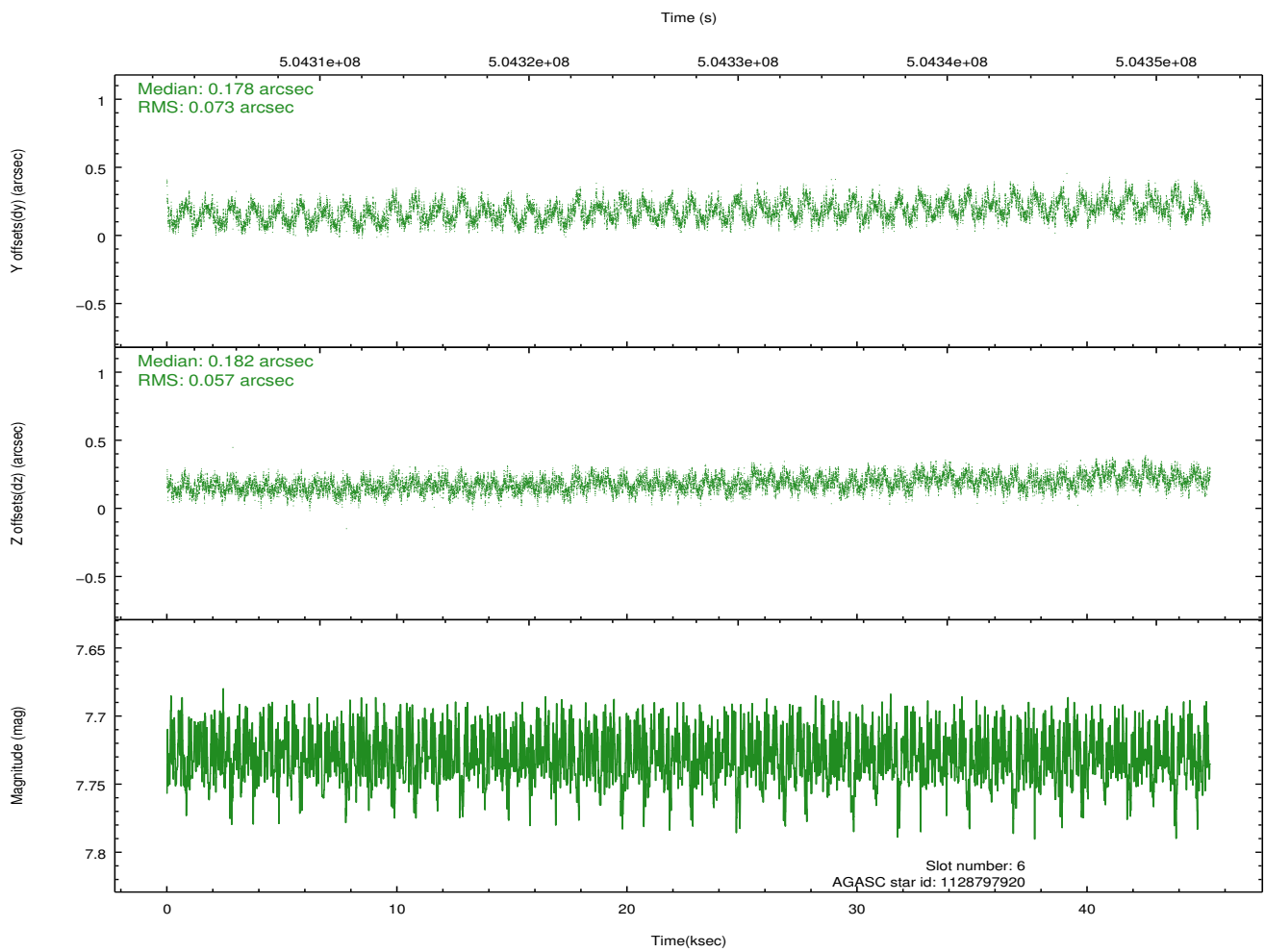
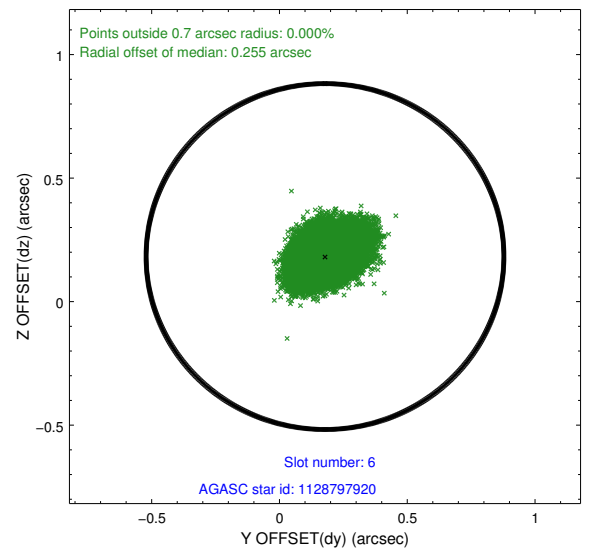
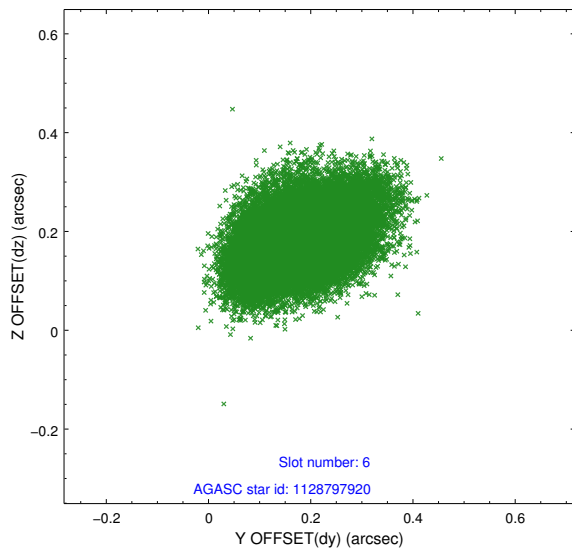
2.4.2 Slot 4



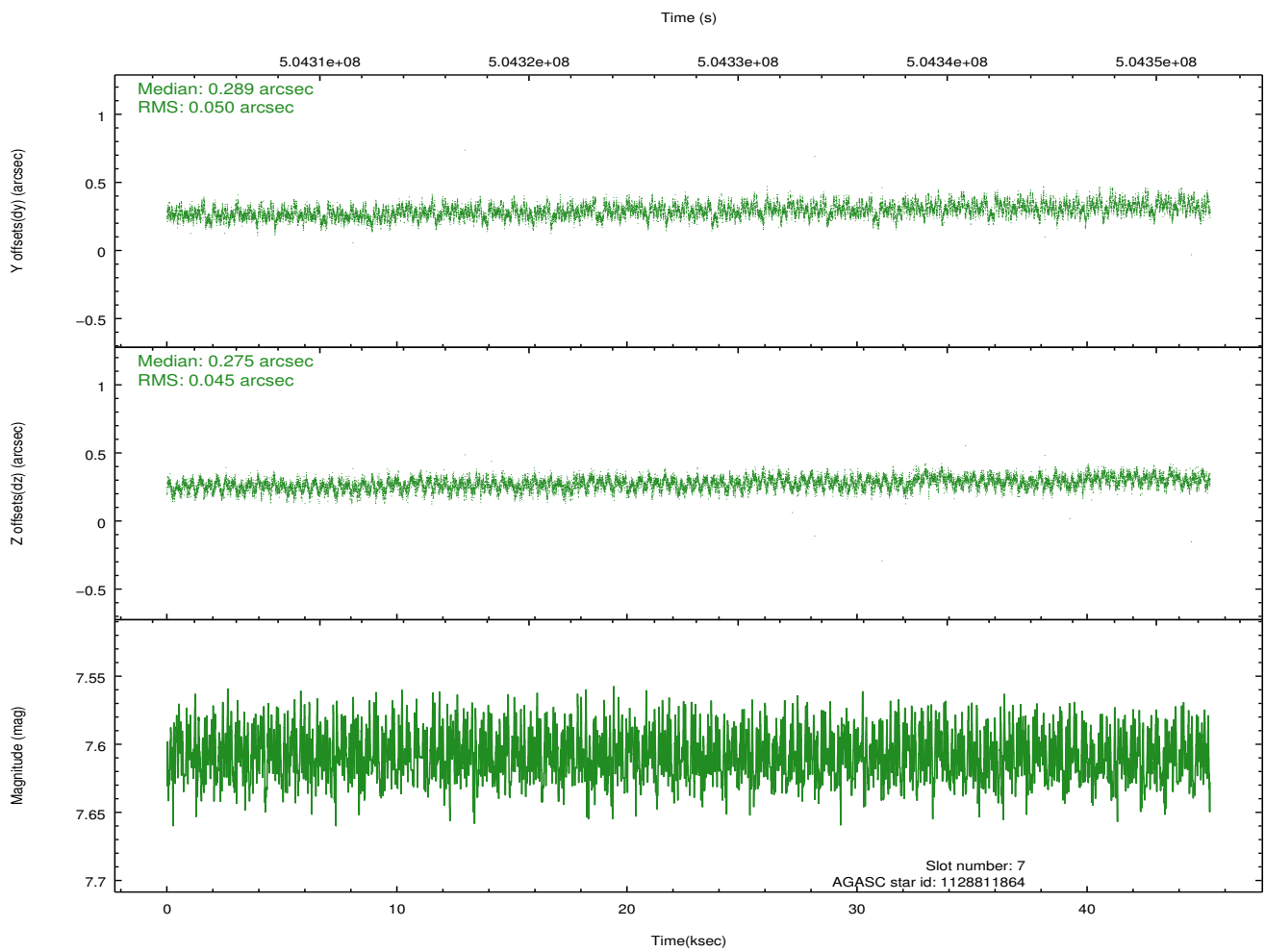
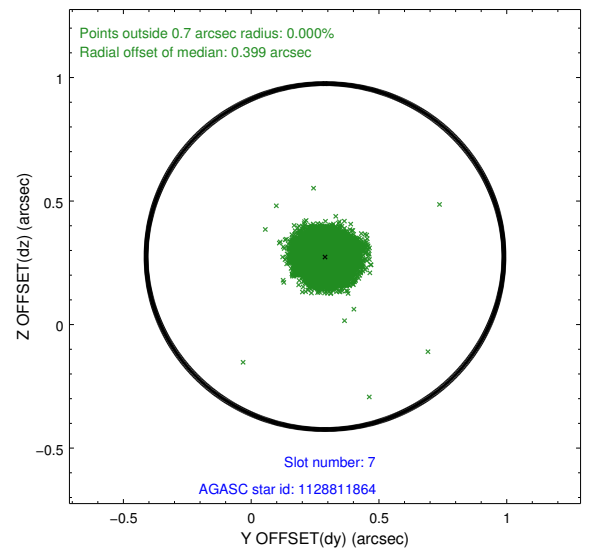
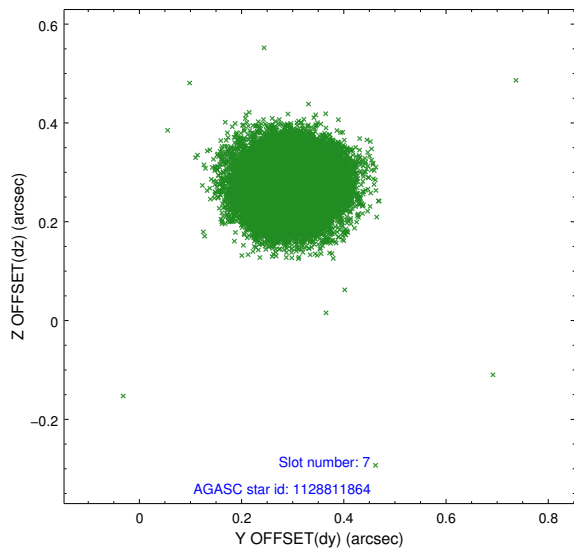
2.4.3 Slot 5



2.4.4 Slot 6

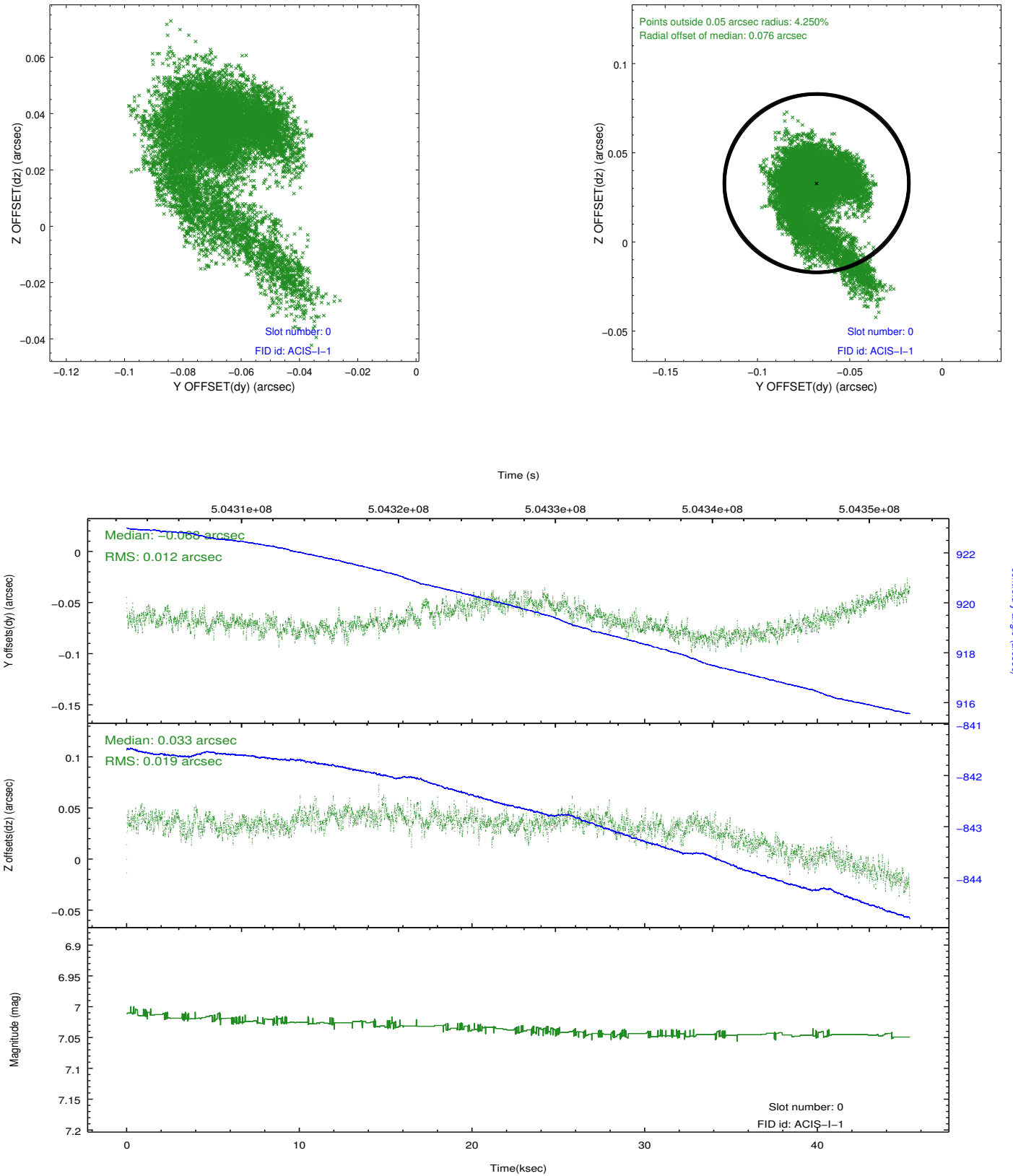


2.4.5 Slot 7

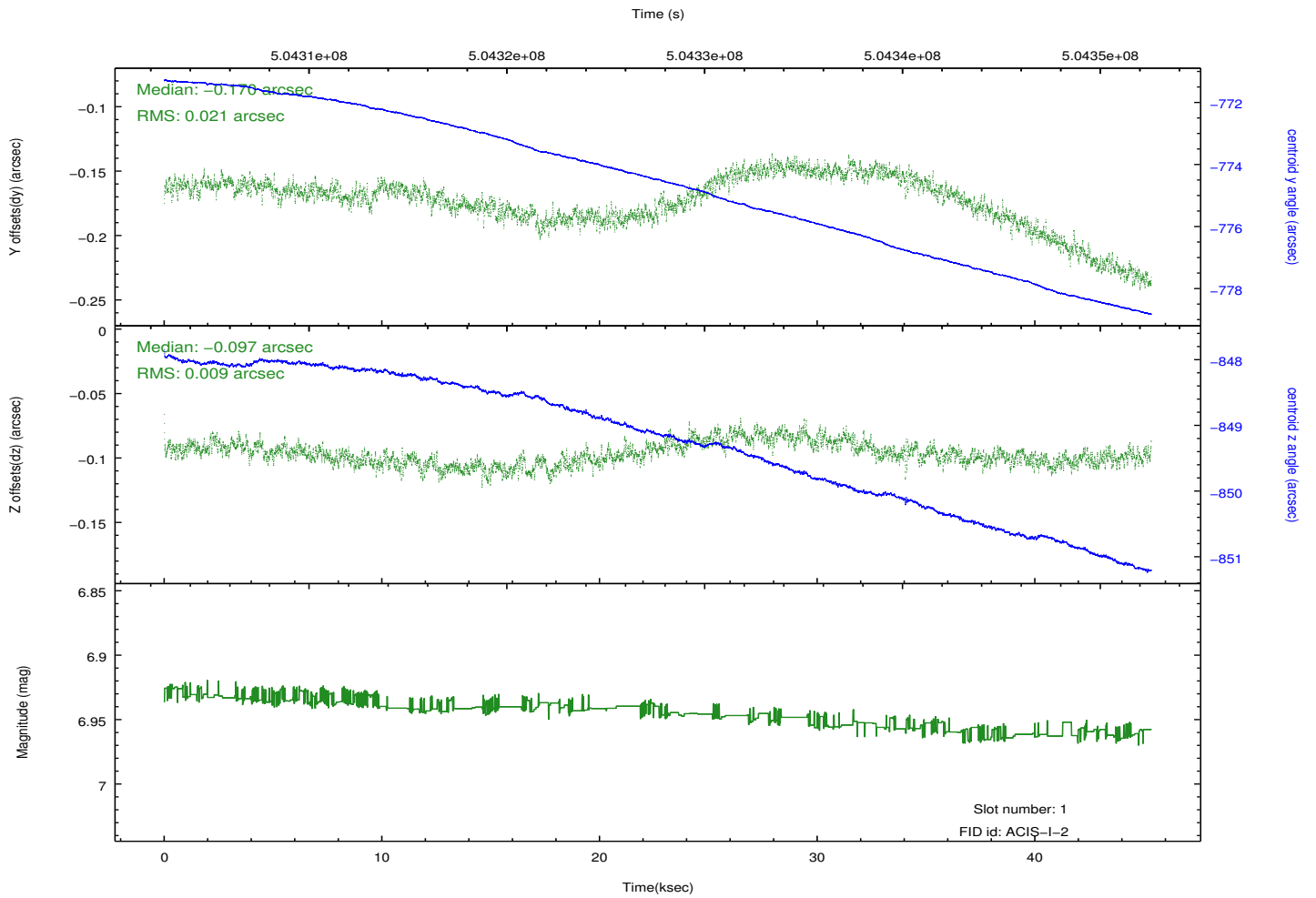
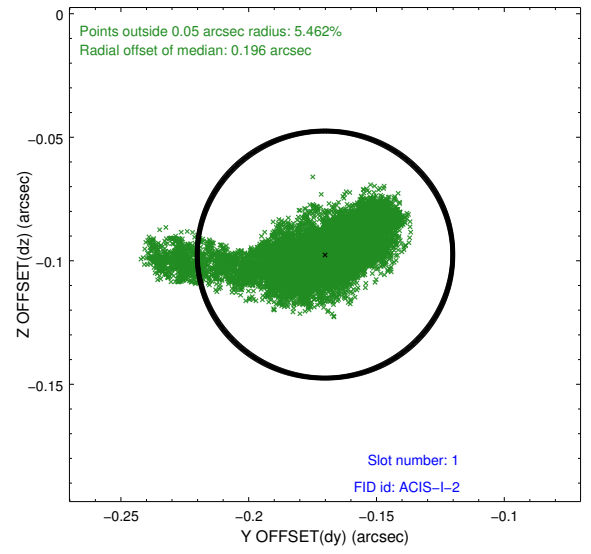
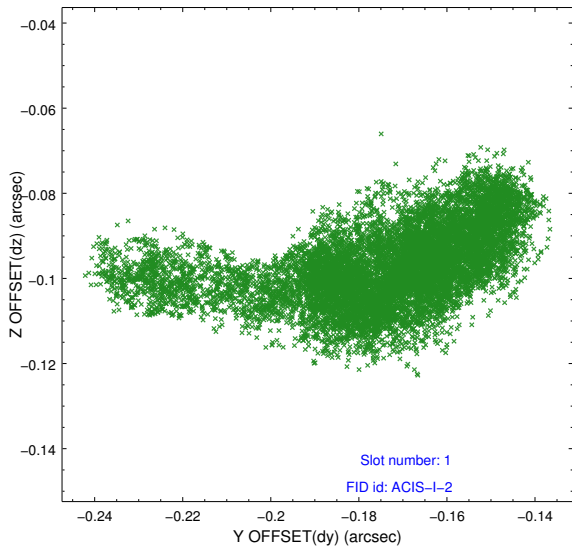


2.5 FID Slots

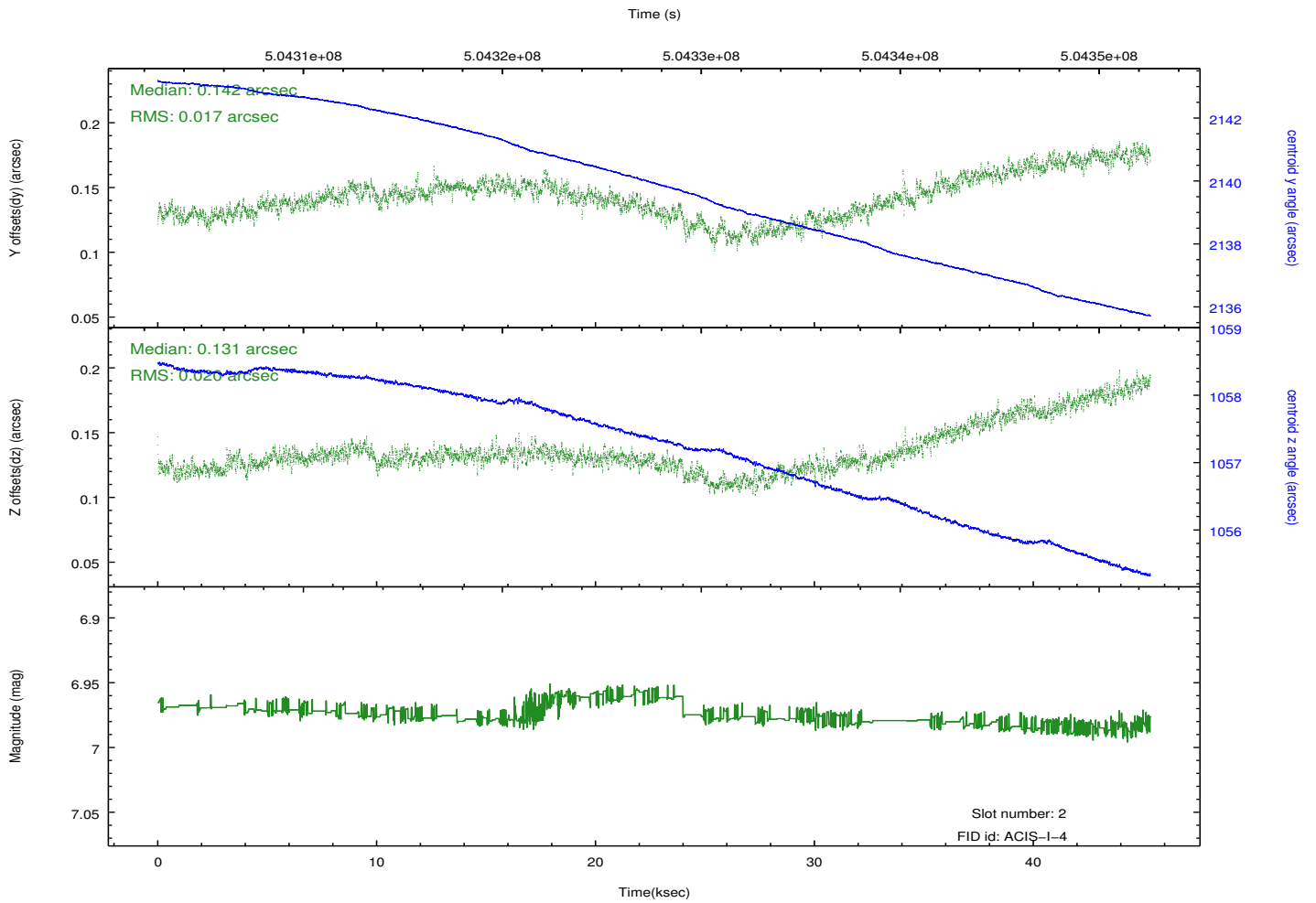
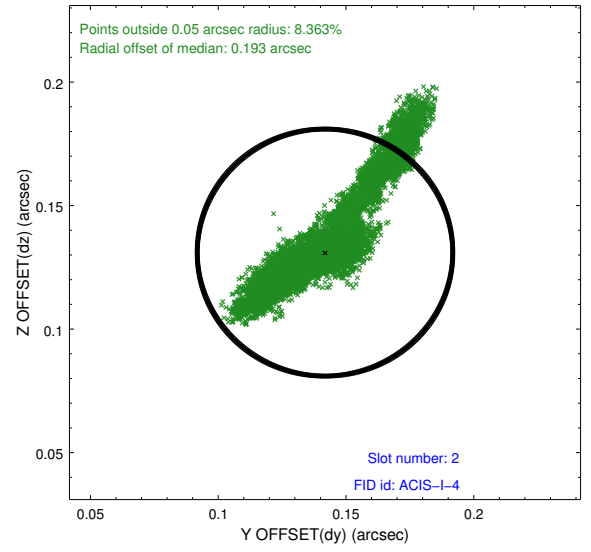
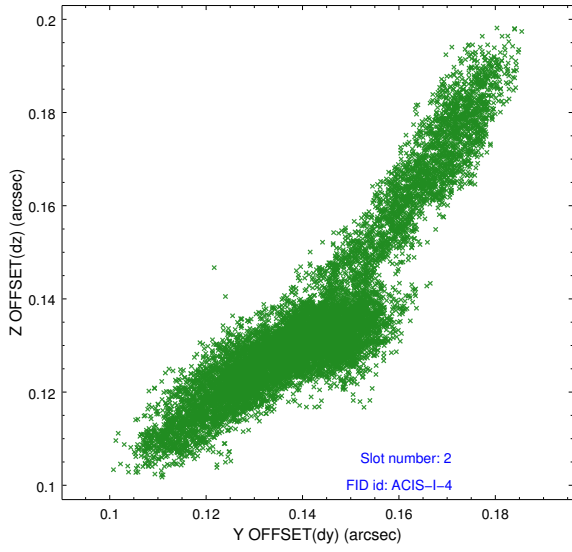
2.5.1 Slot 0



2.5.2 Slot 1



2.5.3 Slot 2



A Summary

A.1 Status

V&V Scientist	Beth Sundheim
V&V Date (YYYY-MM-DD)	2014.12.15
V&V Edition	1
V&V Disposition and Status	OK
V&V Charge Time	44.966358862162

A.2 Comments

These data have been reprocessed with new aspect alignment calibration files that correct small mean offsets (up to 0.4 arcsecs) and improve overall astrometric accuracy. The new calibration was determined using data from the time period being reprocessed and was performed using cross-correlation of X-ray sources with radio and optical counterparts.