

V&V Reference Report

L2 ASCDS Version : 8.5.1.1

Observation 15487 - L2 Version 2
Chandra X-Ray Center

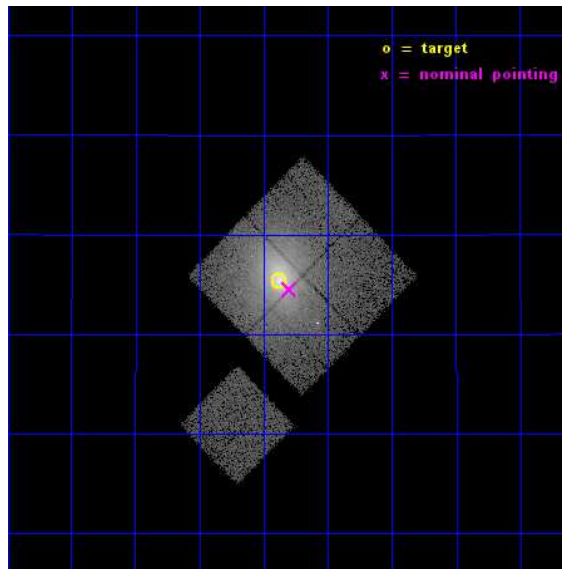
L2 Processing Date : Dec 3 2014

Contents

1	Front	2
2	OBI	3
2.1	OBI	3
2.1.1	Images	3
2.1.2	Bias	3
2.1.3	Parameters	4
2.1.4	Events	4
2.2	Compared Parameters	5
2.3	Aspect	6
2.4	Star Slots	9
2.4.1	Slot 3	9
2.4.2	Slot 4	10
2.4.3	Slot 5	11
2.4.4	Slot 6	12
2.4.5	Slot 7	13
2.5	FID Slots	14
2.5.1	Slot 0	14
2.5.2	Slot 1	15
2.5.3	Slot 2	16
A	Summary	17
A.1	Status	17
A.2	Comments	17

1 Front

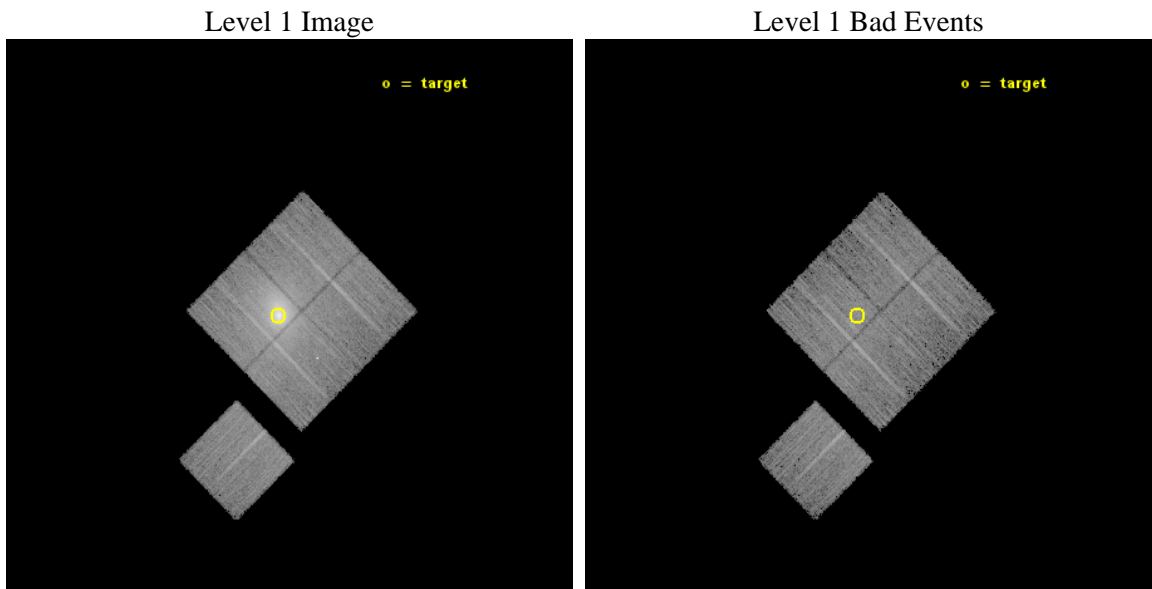
seq_num	890073	Sequence number
obs_id	15487	Observation id
title	AO-14 Calibration Observations of A1795	Proposal title
observer	Dr. CXC Calibration	Principal investigator
object	A1795	Source name
dtcycle	0	
cycle	P	events from which exps? Prim/Second/Both
ra_targ	207.219583	Observer's specified target RA [deg]
dec_targ	26.590833	Observer's specified target Dec [deg]
ra_nom	207.19972949942	Nominal RA [deg]
dec_nom	26.575493400384	Nominal Dec [deg]
roll_nom	225.20381613583	Nominal Roll [deg]
revision	2	Processing version of data
ontime	15084.308625817	Sum of GTIs [s]
livetime	14887.221028715	Livetime [s]
ontime0	15081.044475436	Sum of GTIs [s]
ontime1	15084.226545811	Sum of GTIs [s]
ontime2	15084.267585814	Sum of GTIs [s]
ontime3	15084.308625817	Sum of GTIs [s]
ontime6	15084.144465804	Sum of GTIs [s]
l2events	154779	Number of level 2 events



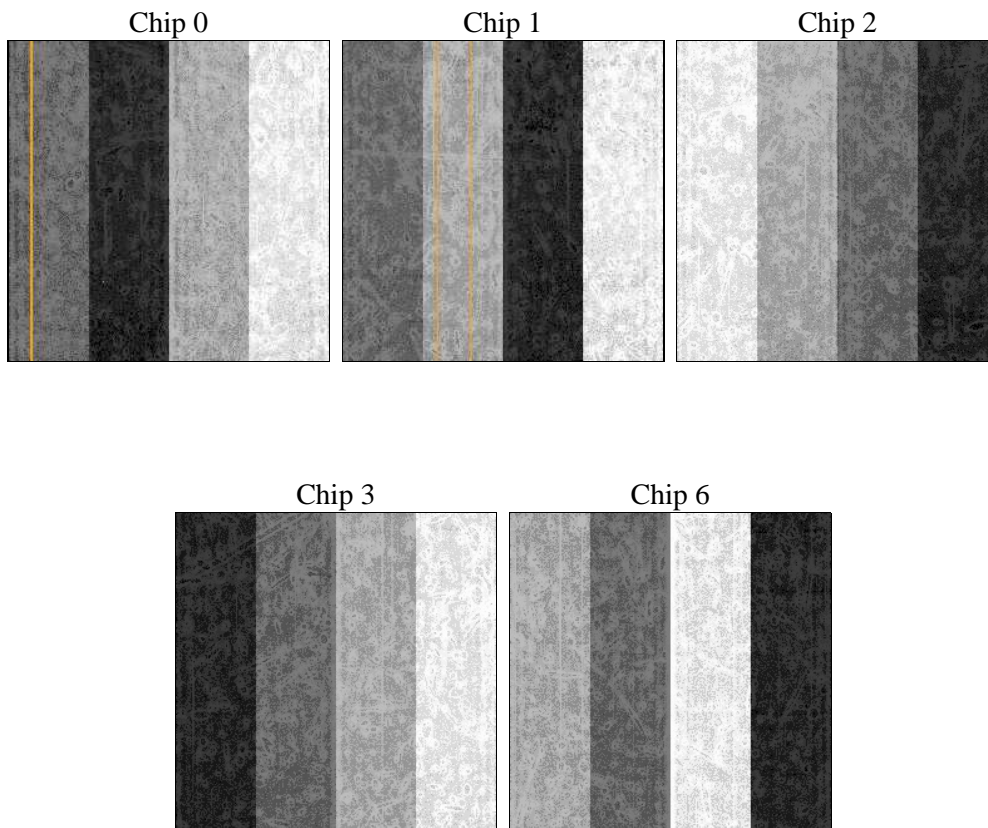
2 OBI

2.1 OBI

2.1.1 Images



2.1.2 Bias



2.1.3 Parameters

obi_num	1	Obi number	sched_exp_time	15000.000000	[s] Scheduled observation exposure time
ascdsver	10.3	Processing system revision	ontime	15084.308625817	Sum of GTIs [s]
caldbver	4.6.4	 	ontime0	15081.044475436	Sum of GTIs [s]
date	2014-12-03T12:25:20	Date and time of file creation	ontime1	15084.226545811	Sum of GTIs [s]
revision	2	Processing version of data	ontime2	15084.267585814	Sum of GTIs [s]
			ontime3	15084.308625817	Sum of GTIs [s]
			ontime6	15084.144465804	Sum of GTIs [s]
			l1events	468435	Number of level 1 events

2.1.4 Events

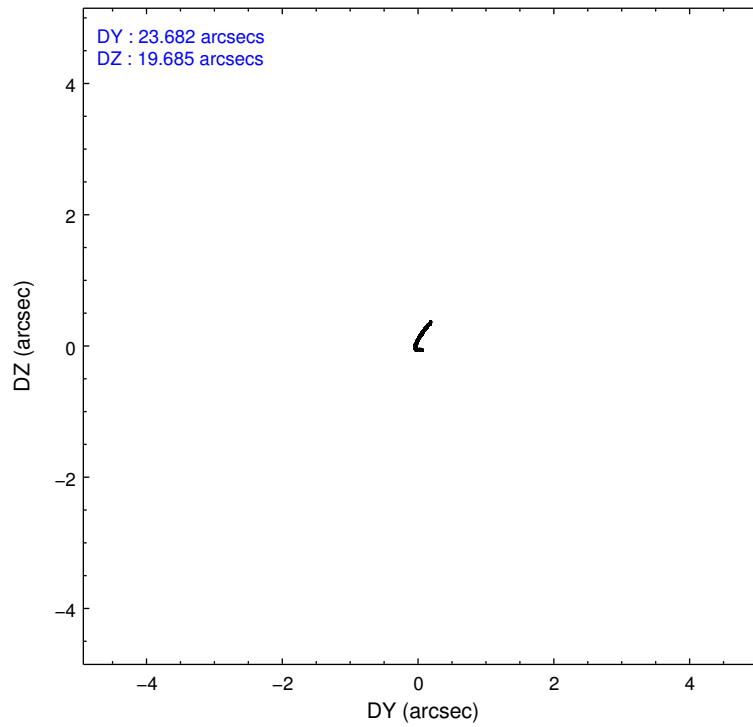
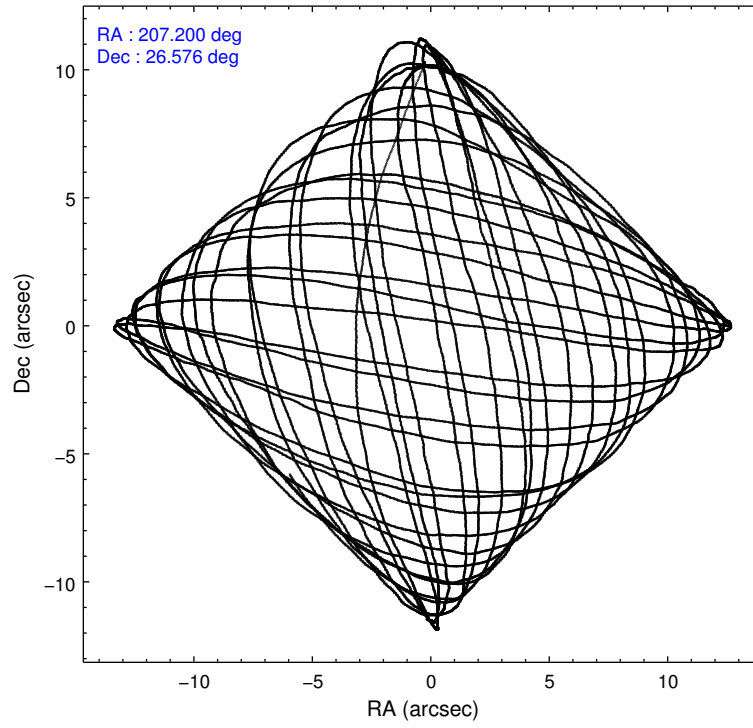
	ccd 0	ccd 1	ccd 2	ccd 3	ccd 6
level 1 events	68442	79647	90232	159139	70975
rejected events	55445	56944	63763	65921	61075
rejected %	81%	71%	70%	41%	86%

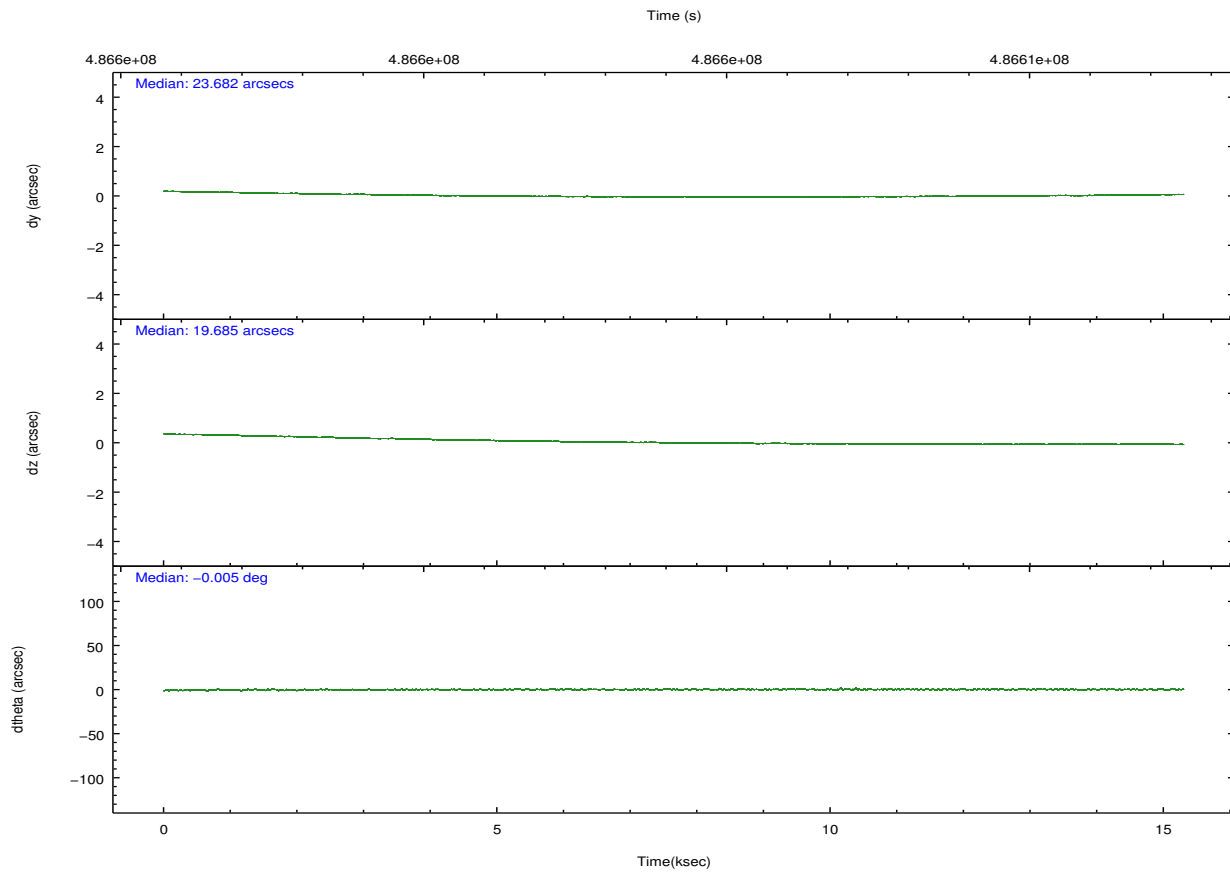
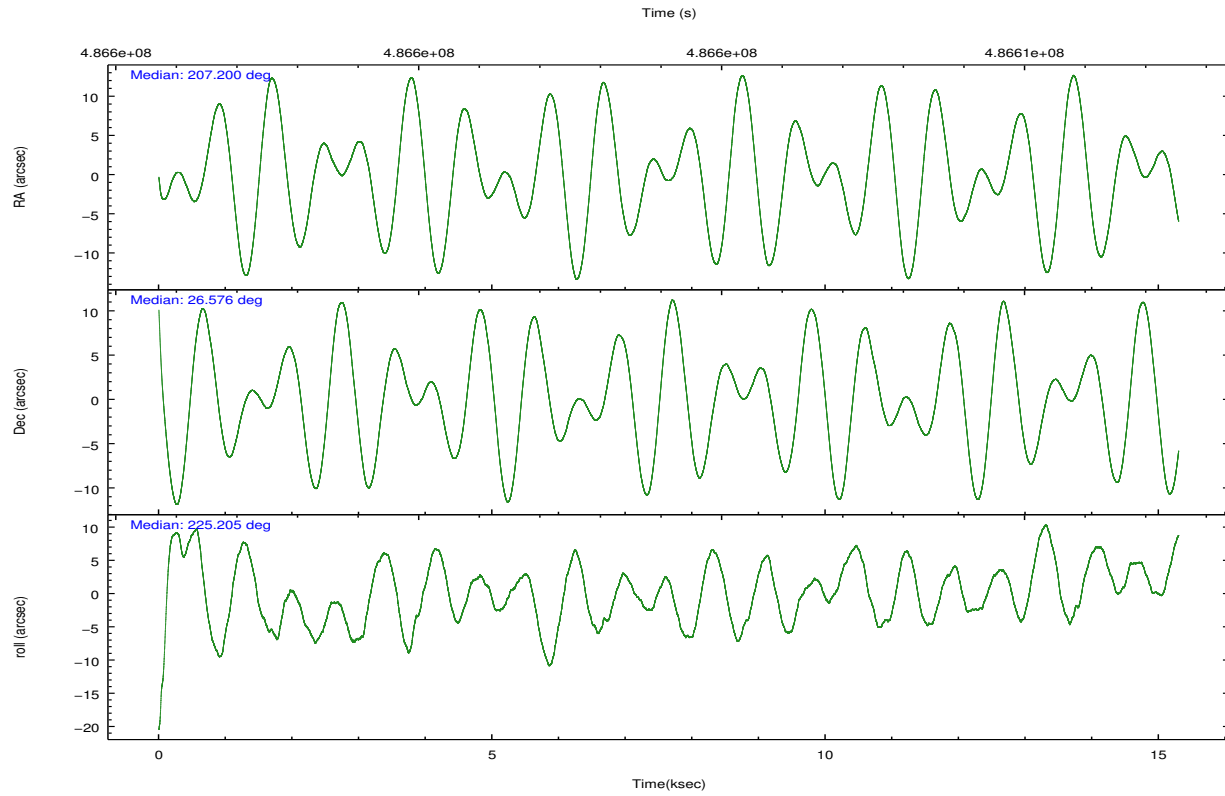
	ccd 0	ccd 1	ccd 2	ccd 3	ccd 6
grade 0 events	6637	13962	17976	72824	3995
	9%	17%	19%	45%	5%
grade 1 events	40	78	121	377	34
	0%	0%	0%	0%	0%
grade 2 events	2498	3648	3745	10125	2002
	3%	4%	4%	6%	2%
grade 3 events	1012	1351	1369	3303	919
	1%	1%	1%	2%	1%
grade 4 events	946	1300	1400	3296	936
	1%	1%	1%	2%	1%
grade 5 events	3431	3745	3195	4209	3613
	5%	4%	3%	2%	5%
grade 6 events	1907	2448	1987	3714	2050
	2%	3%	2%	2%	2%
grade 7 events	51971	53115	60439	61291	57426
	75%	66%	66%	38%	80%

2.2 Compared Parameters

Parameter	Planned	Actual	Parameter	Planned	Actual
Instrument	ACIS	ACIS	Obspar format version number	7	7
Detector	ACIS-01236	ACIS-01236	Obspar file type	PREDICTED	ACTUAL
Grating	NONE	NONE	Obspar update status	NONE	UPDATED
Data mode	VFAINT	VFAINT	Number of optional ACIS chips dropped	0	0
Observation mode	POINTING	POINTING	On-chip summing requested	N	N
[deg] Pointing RA	207.207460	207.1997294994234	Subarray requested	NONE	NONE
[deg] Pointing Dec	26.602146	26.5754934003845	Alternating exposures requested	N	N
[deg] Pointing Roll	224.991679	225.2038161358265	[s] Primary exposure time	0.000000	3.1
[mm] SIM focus pos	-0.782348	-0.7809083437167272			
[mm] SIM defocus	0	0.001439871863259334			
[mm] SIM translation stage pos	-230.252463	-230.248423740357			
[mm] SIM translation stage offset	-3.34	-3.34402926257269			
[s] Observation start time (MET)	486596786.184000	486595785.31827			
Observation start date	2013-06-02T21:45:19	2013-06-02T21:29:45			
[s] Observation end time (MET)	486611786.184000	486612432.34417			
Observation end date	2013-06-03T01:55:19	2013-06-03T02:07:12			
Read mode	TIMED	TIMED			

2.3 Aspect





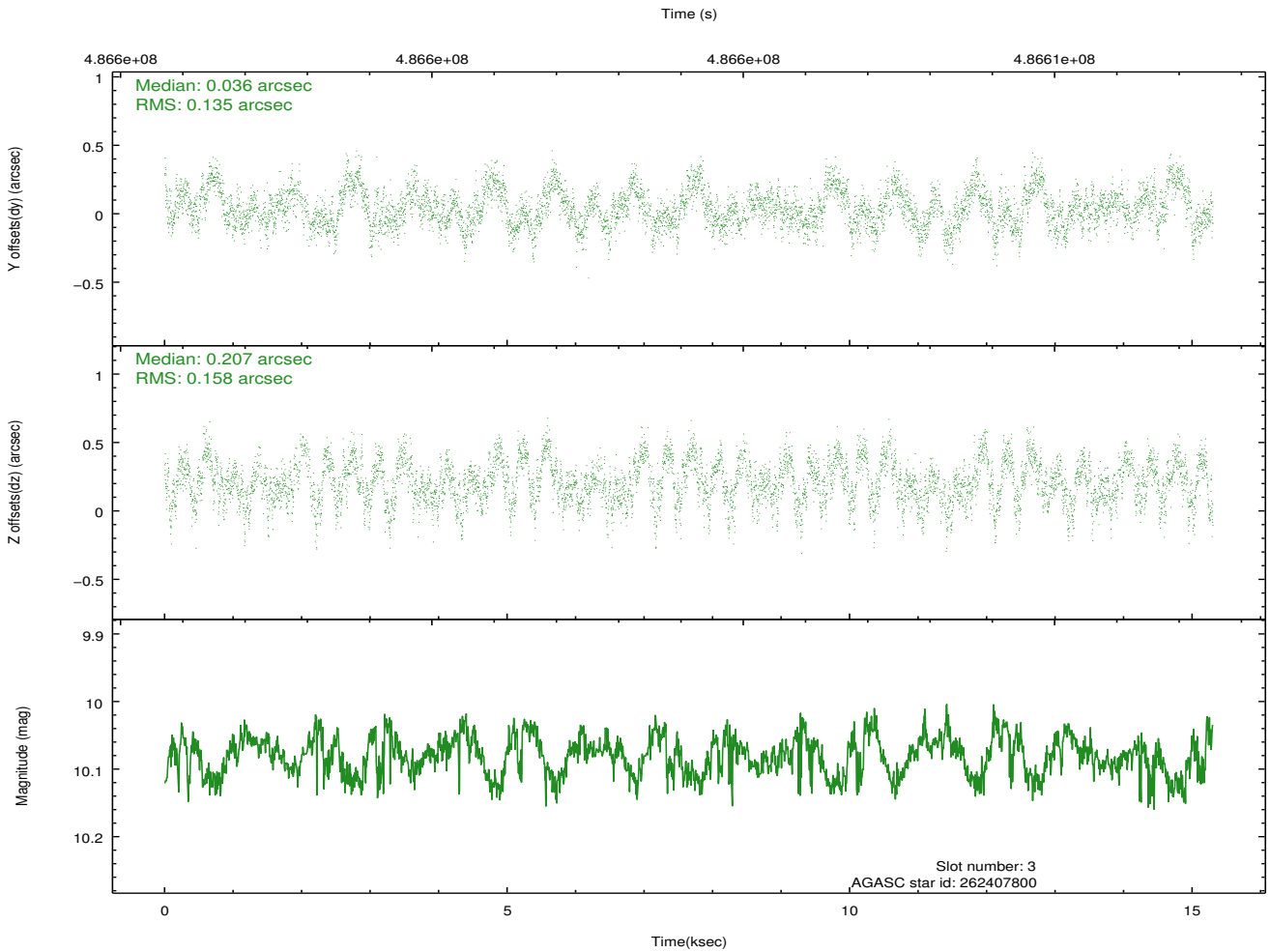
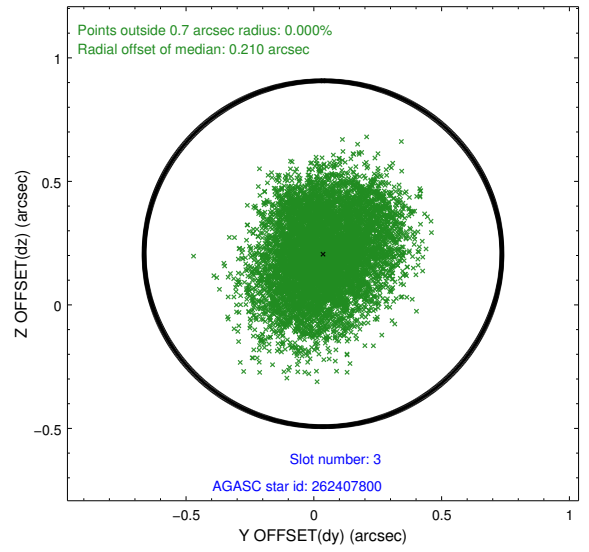
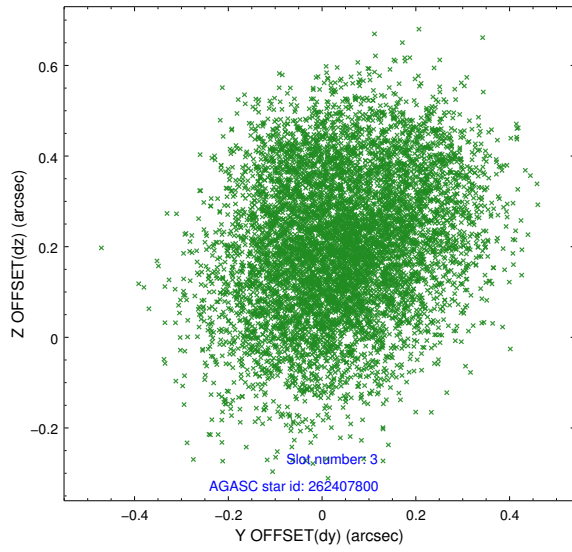
Slot Statistics

slot	status	used	id	mag	n_pts	med_dy	med_dz	dr1	dr2	ra	dec	mean_y	mean_z
0	FID		ACIS-I-1	7.12	3732	0.062	0.002	0.006	0.011	0.000000	0.000000	915.57	-912.00
1	FID		ACIS-I-5	7.11	3732	-0.278	0.053	0.006	0.010	0.000000	0.000000	-1832.81	985.24
2	FID		ACIS-I-6	7.12	3732	0.125	0.015	0.007	0.012	0.000000	0.000000	380.73	1630.14
3	GUIDE	used	262407800	10.08	7218	0.036	0.207	0.228	0.345	207.321181	27.251762	-1908.54	-1397.73
4	GUIDE	used	262408096	9.33	7416	0.071	0.069	0.163	0.255	207.011678	26.515421	666.68	-225.65
5	GUIDE	used	262408936	9.70	7391	0.231	-0.033	0.220	0.347	207.154731	26.726554	-196.26	-436.01
6	GUIDE	used	262409624	10.07	7401	-0.046	0.013	0.215	0.331	207.610037	27.074851	-2116.99	-292.24
7	GUIDE	used	262411960	9.67	7459	-0.285	-0.242	0.169	0.270	207.327895	25.881727	1557.43	2109.91

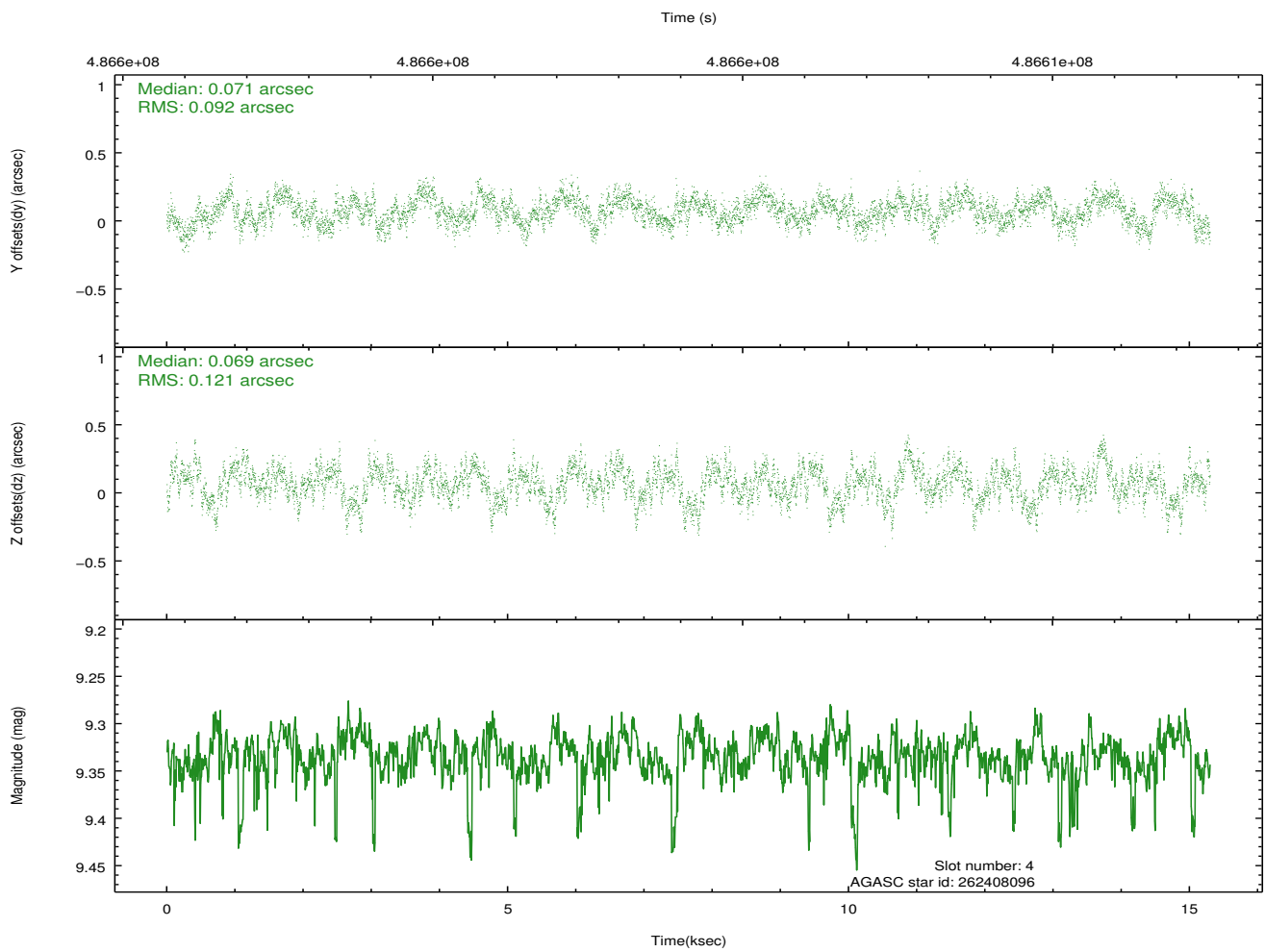
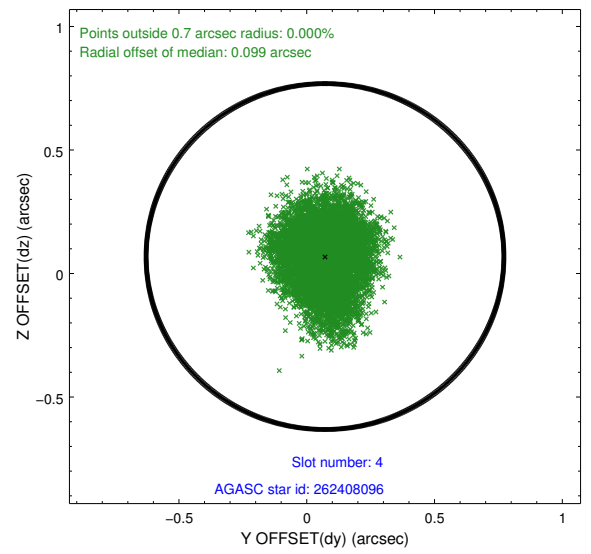
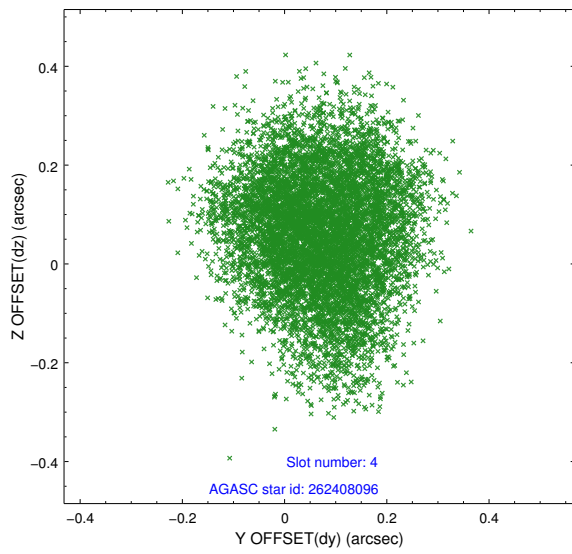
∞

2.4 Star Slots

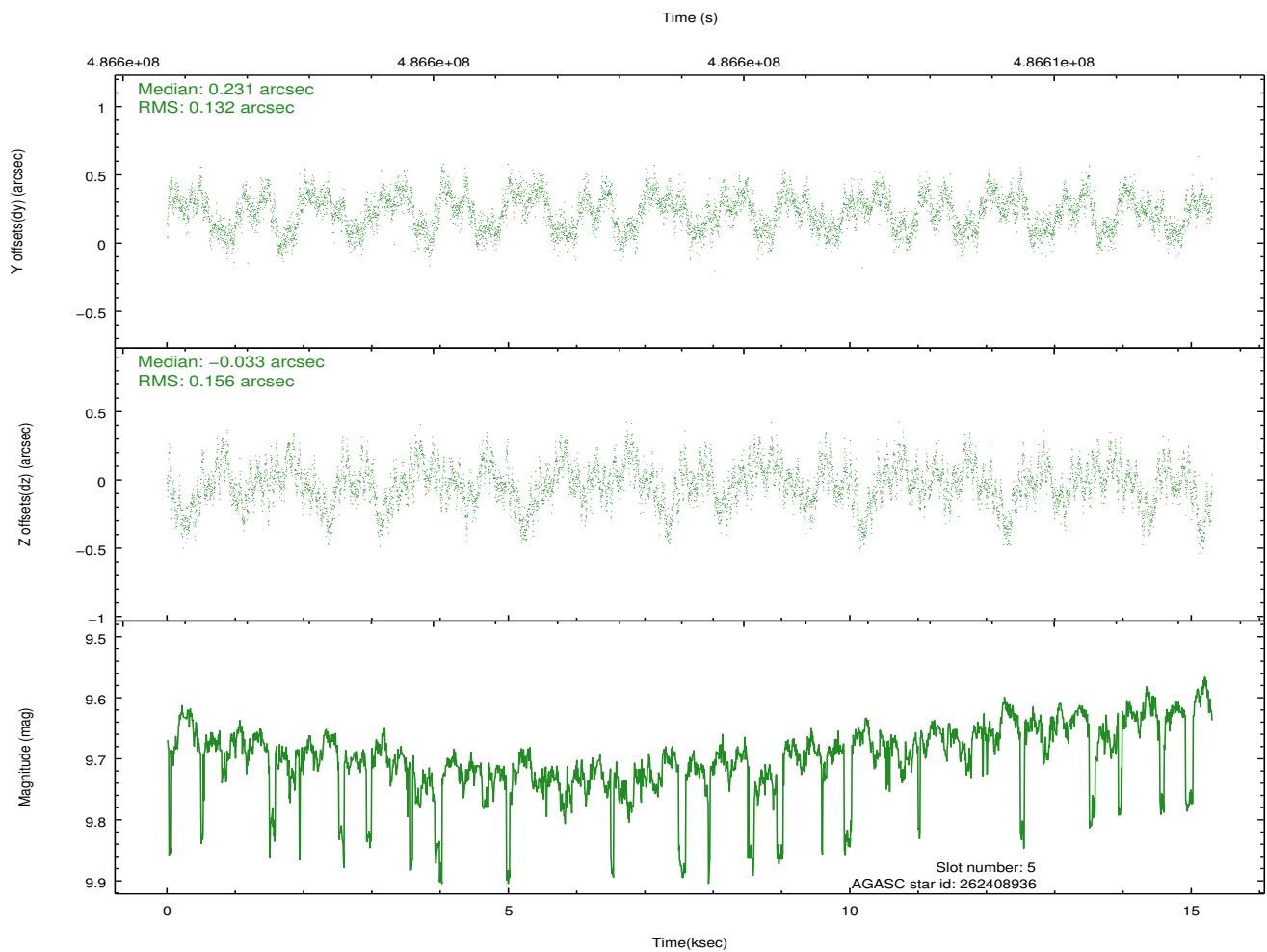
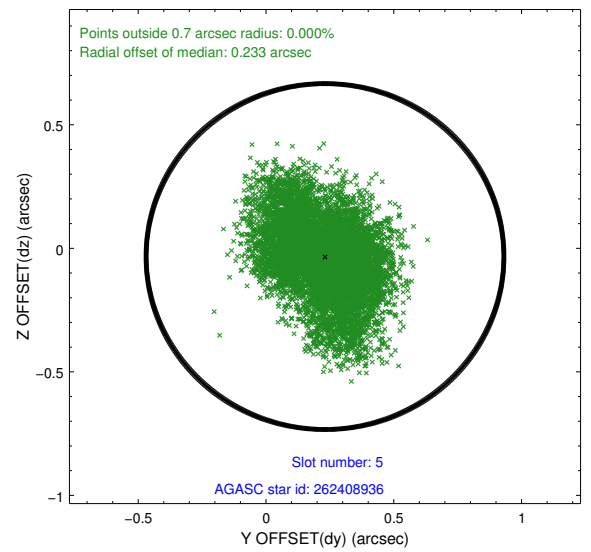
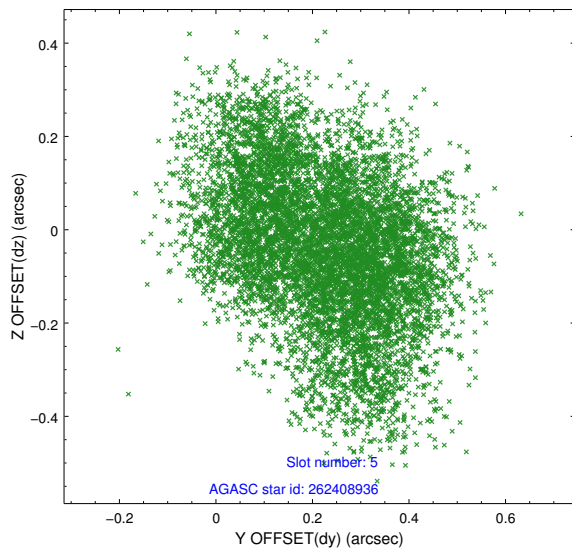
2.4.1 Slot 3



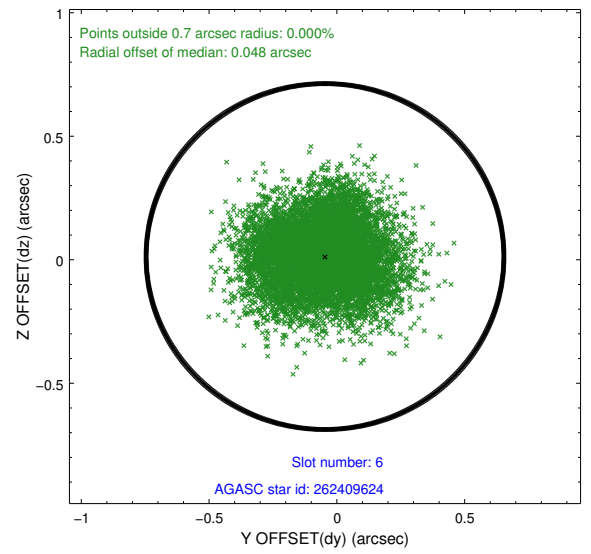
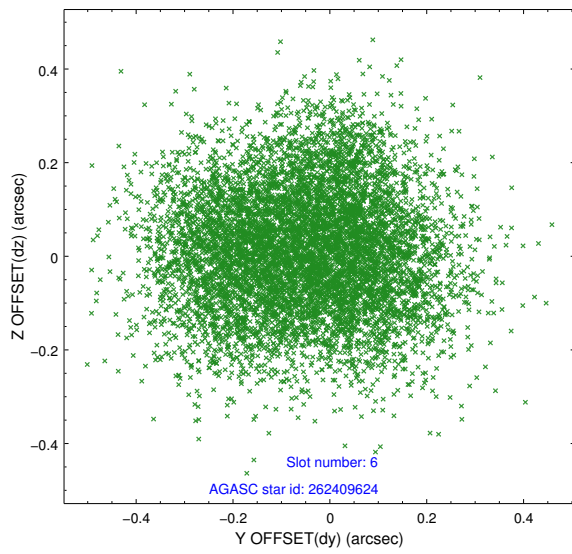
2.4.2 Slot 4



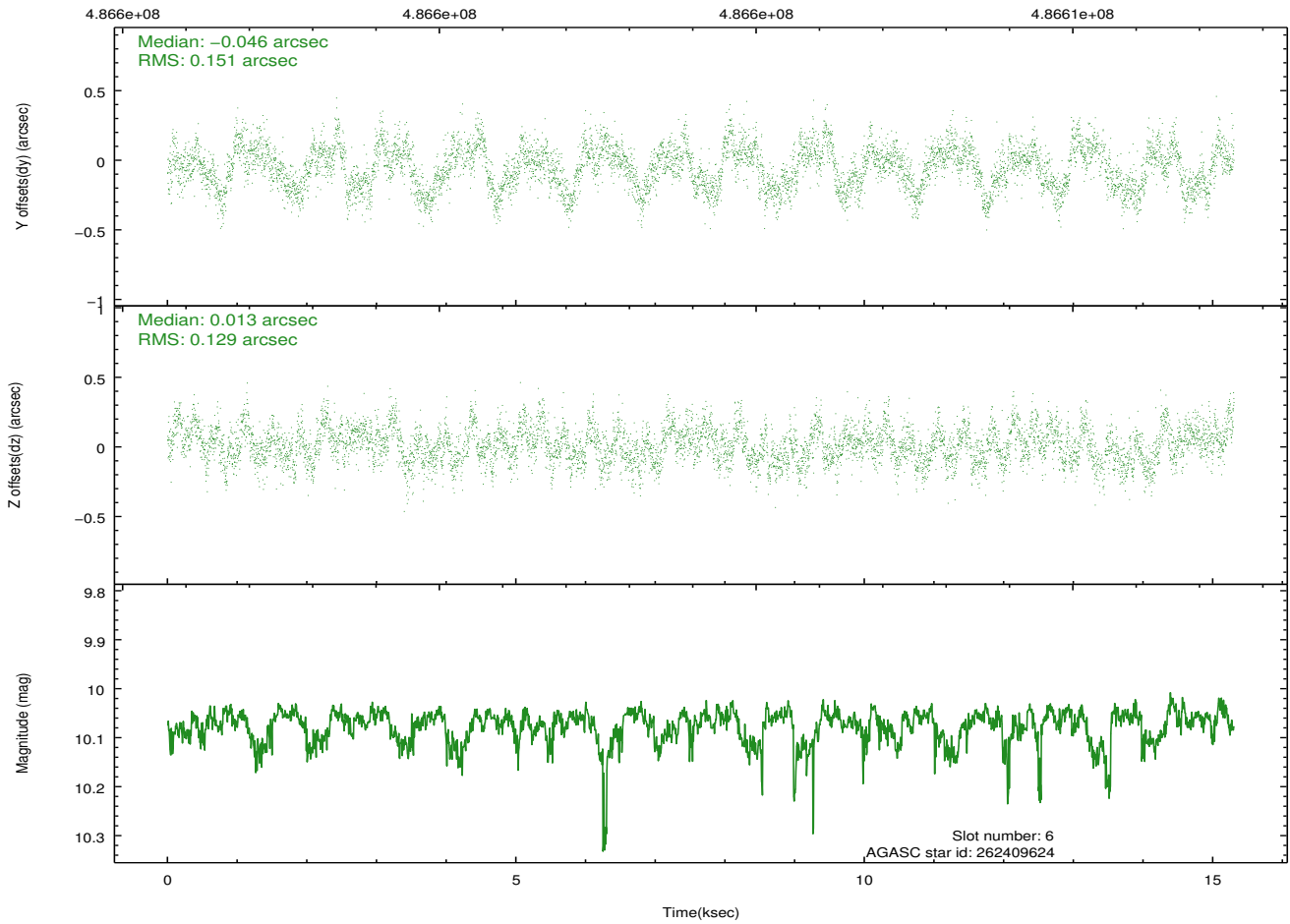
2.4.3 Slot 5



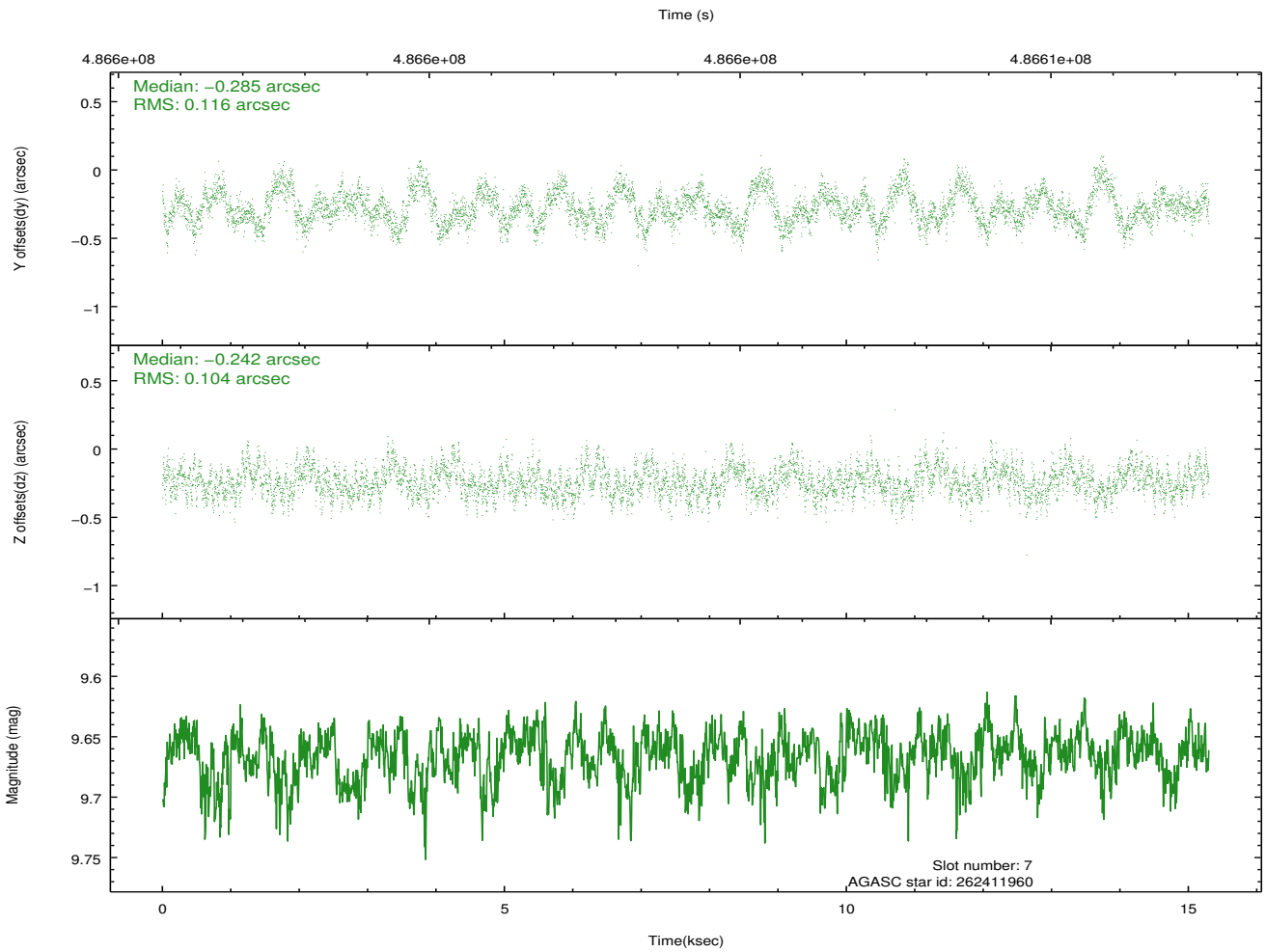
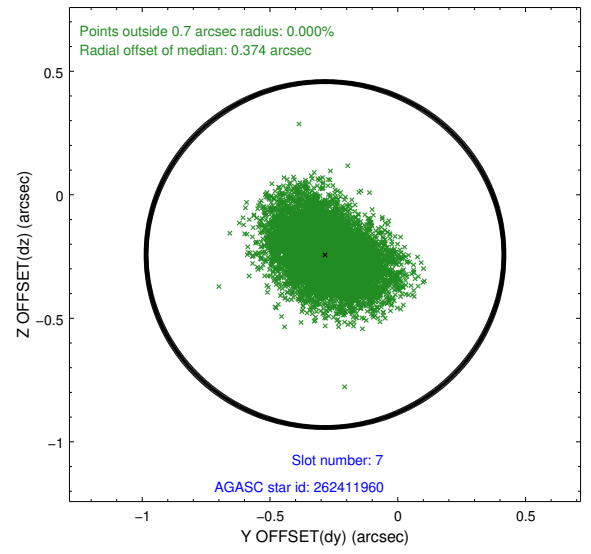
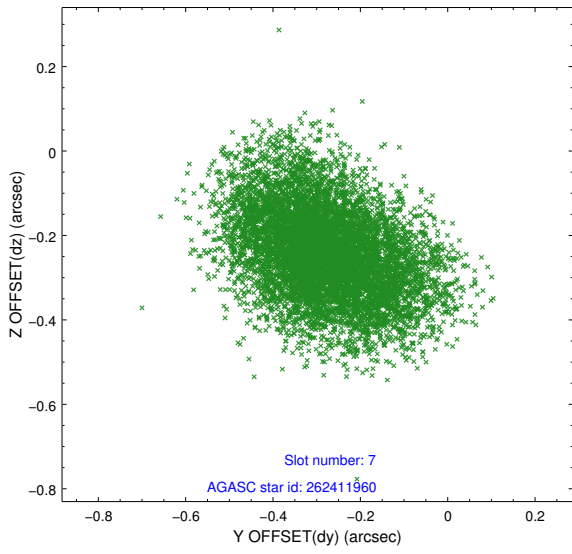
2.4.4 Slot 6



Time (s)

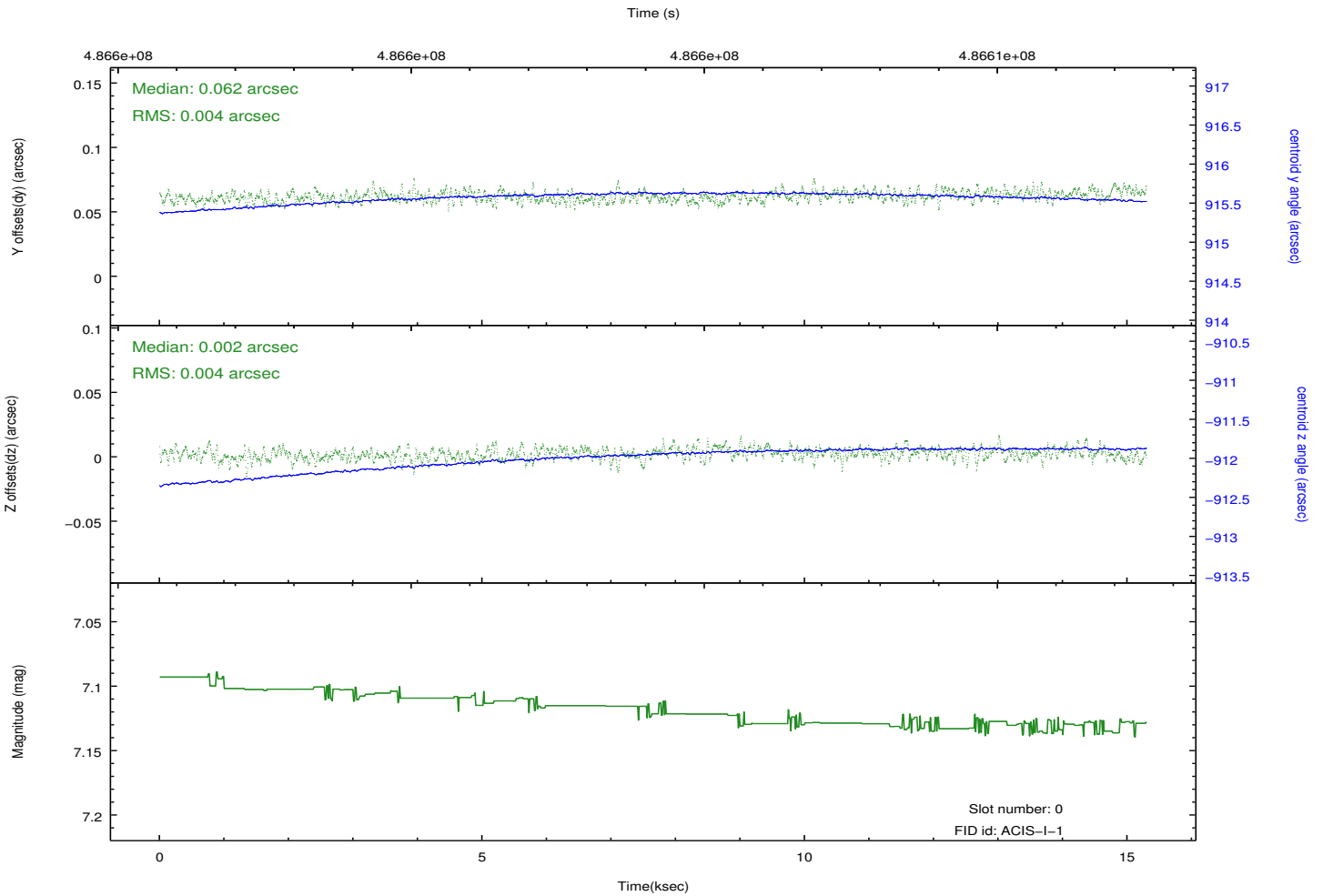
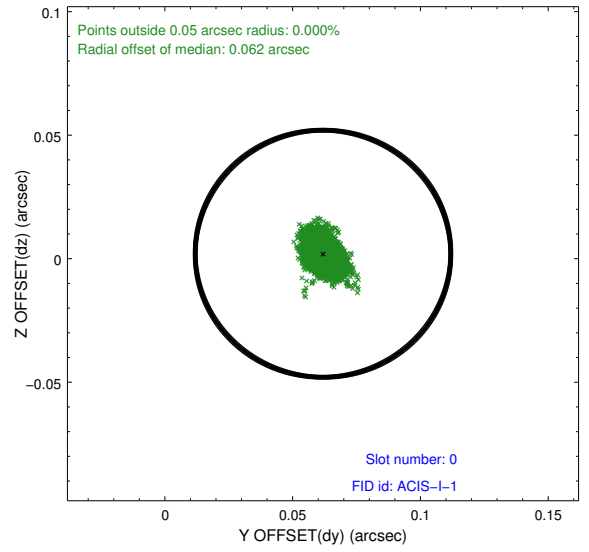
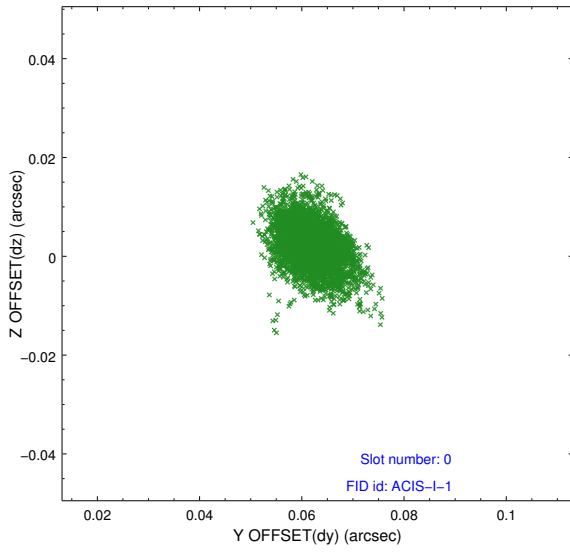


2.4.5 Slot 7

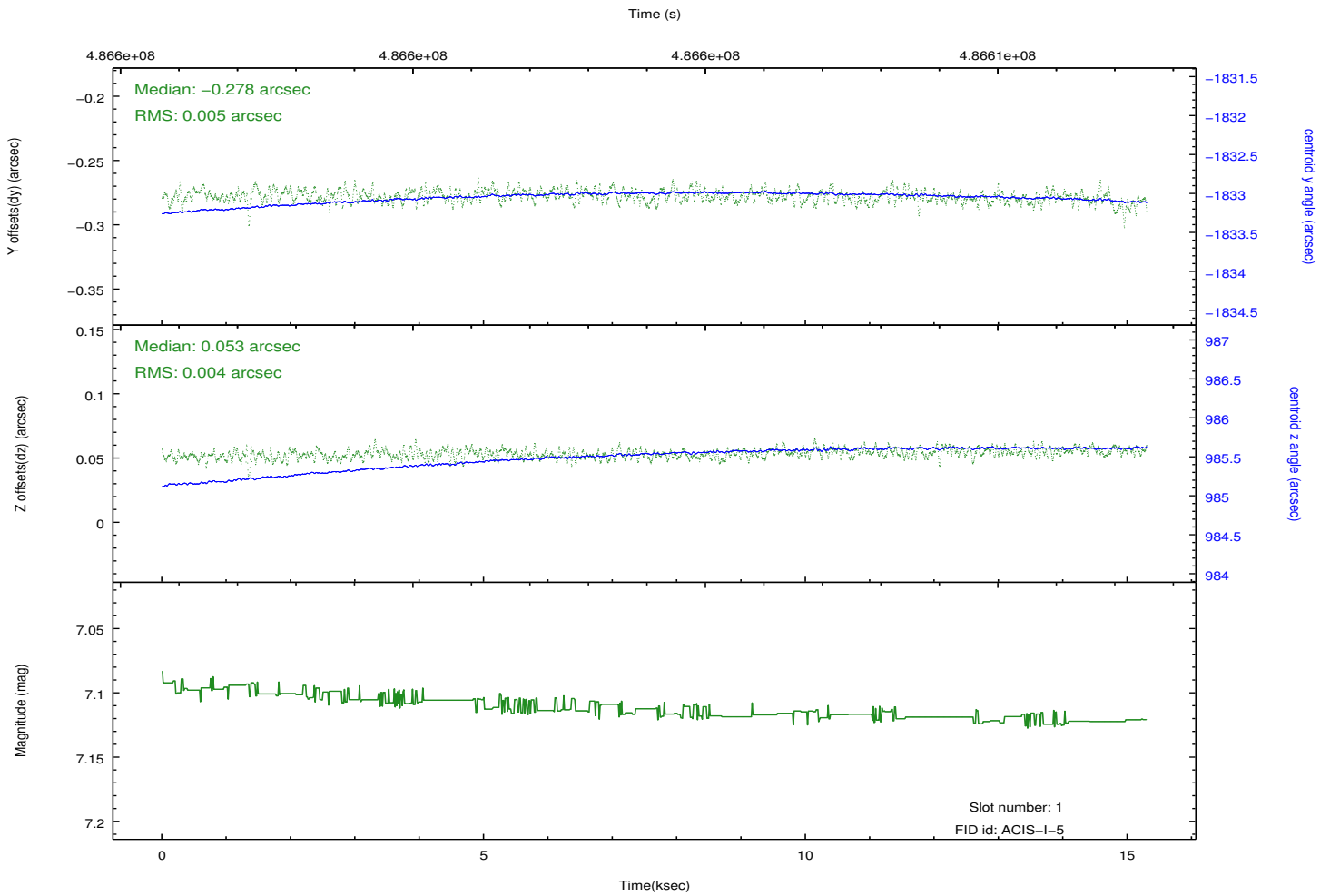
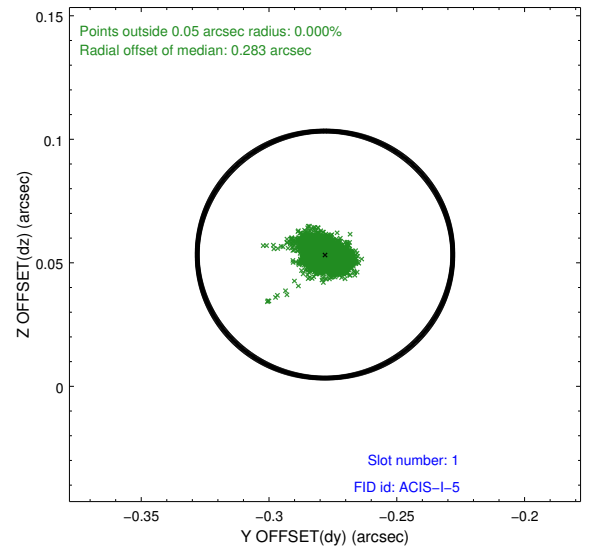
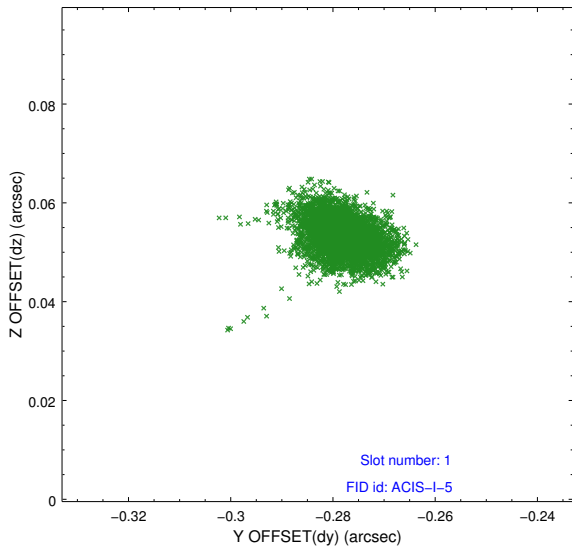


2.5 FID Slots

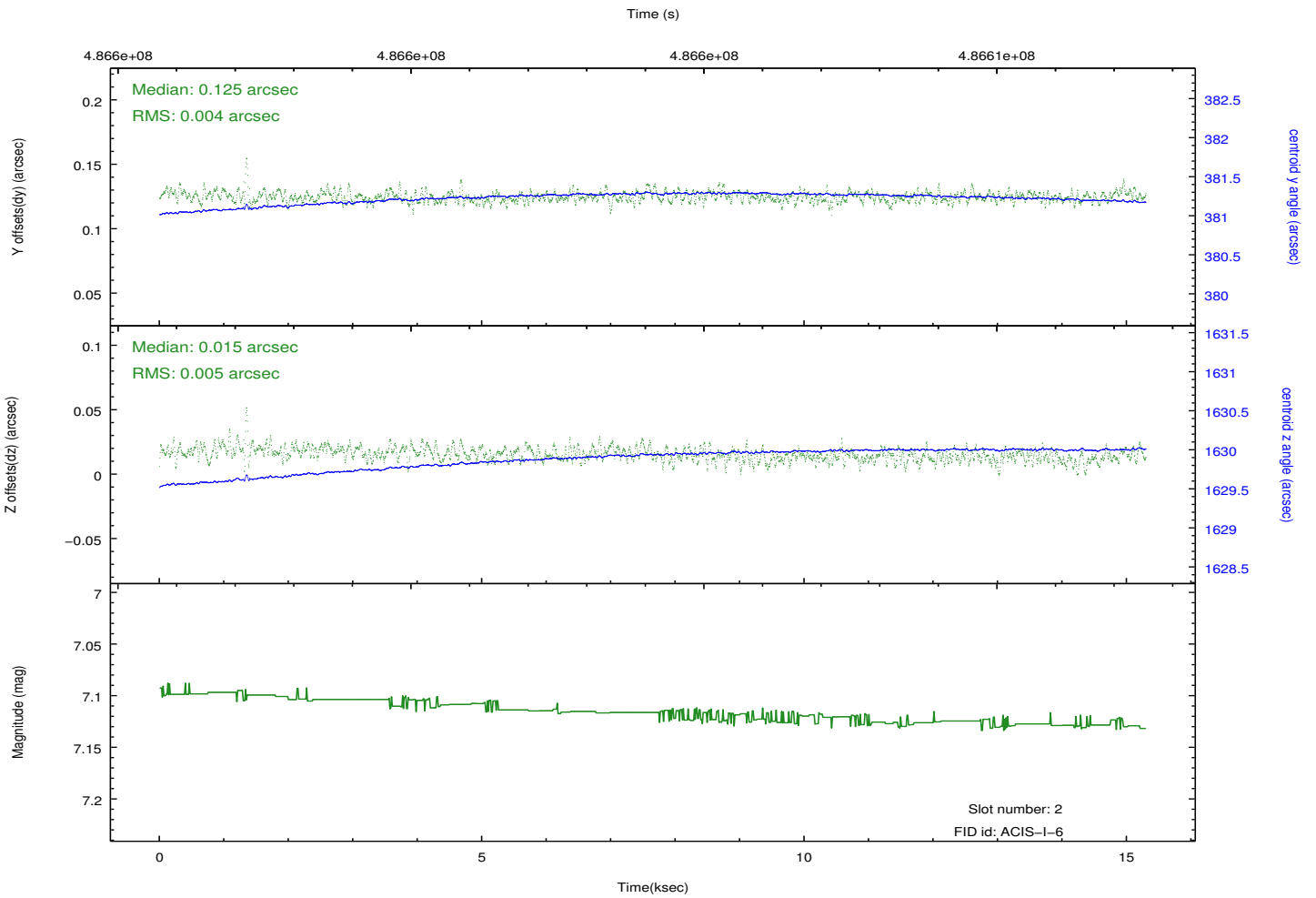
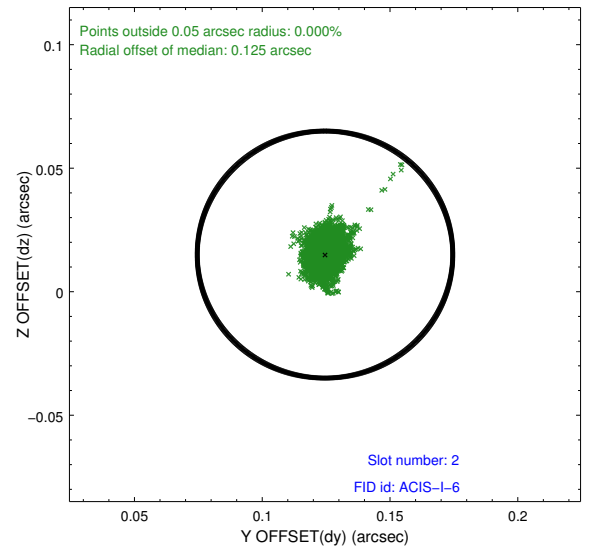
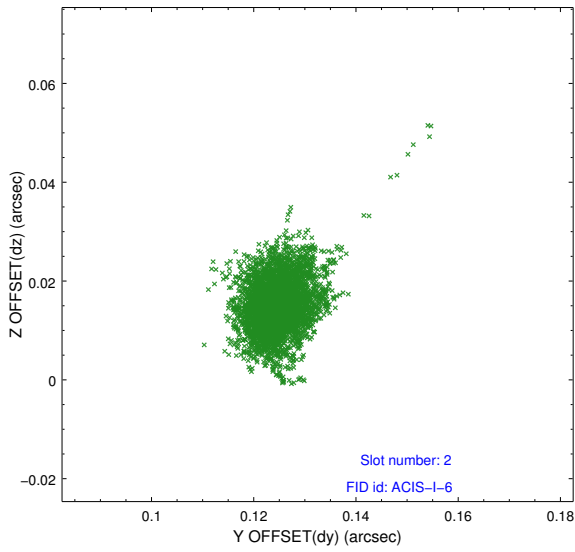
2.5.1 Slot 0



2.5.2 Slot 1



2.5.3 Slot 2



A Summary

A.1 Status

V&V Scientist	Beth Sundheim
V&V Date (YYYY-MM-DD)	2014.12.10
V&V Edition	1
V&V Disposition and Status	OK
V&V Charge Time	15.084308625817

A.2 Comments

These data have been reprocessed with new aspect alignment calibration files that correct small mean offsets (up to 0.4 arcsecs) and improve overall astrometric accuracy. The new calibration was determined using data from the time period being reprocessed and was performed using cross-correlation of X-ray sources with radio and optical counterparts.