

V&V Reference Report

L2 ASCDS Version : 8.5.1.1

Observation 15557 - L2 Version 2
Chandra X-Ray Center

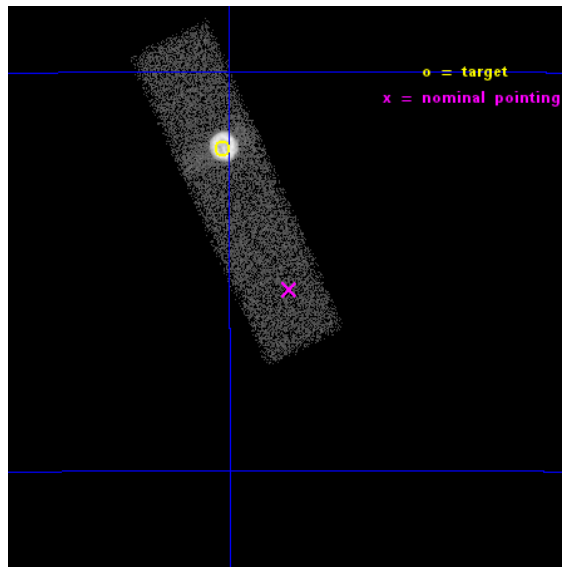
L2 Processing Date : Dec 1 2014

Contents

1	Front	2
2	OBI	3
2.1	OBI	3
2.1.1	Images	3
2.1.2	Bias	3
2.1.3	Parameters	4
2.1.4	Events	4
2.2	Compared Parameters	5
2.3	Aspect	6
2.4	Star Slots	9
2.4.1	Slot 3	9
2.4.2	Slot 4	10
2.4.3	Slot 5	11
2.4.4	Slot 6	12
2.4.5	Slot 7	13
2.5	FID Slots	14
2.5.1	Slot 0	14
2.5.2	Slot 1	15
2.5.3	Slot 2	16
A	Summary	17
A.1	Status	17
A.2	Comments	17

1 Front

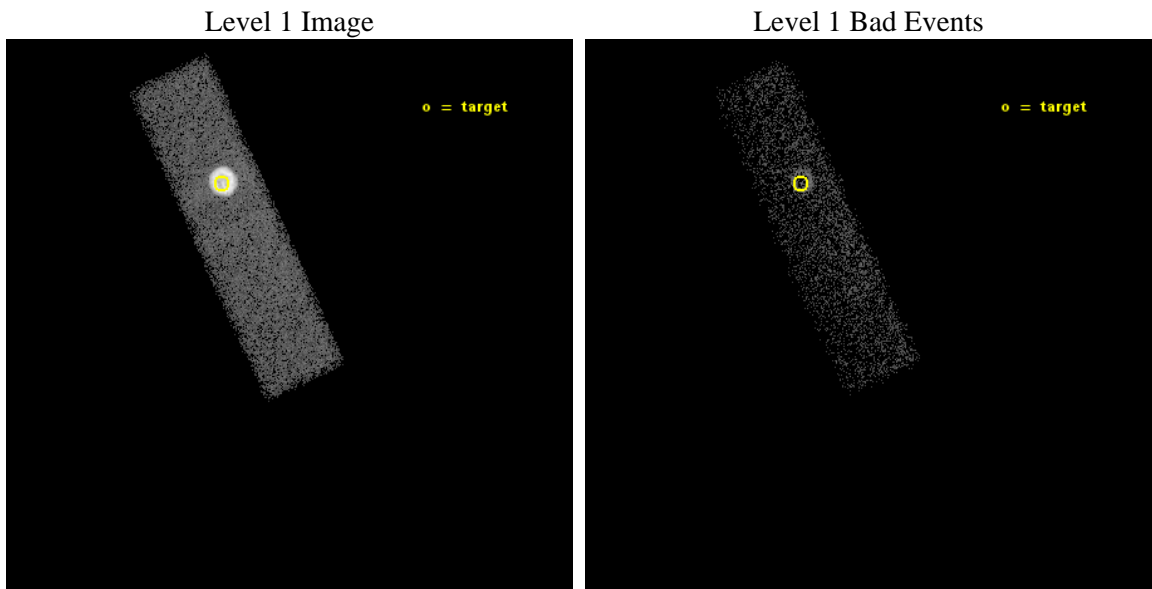
seq_num	590529	Sequence number
obs_id	15557	Observation id
title	AO-14 S3 Calibration Observations of E0102-72	Proposal title
observer	Dr. CXC Calibration	Principal investigator
object	E0102-72 S3,-120,-3.3,0,10.5	Source name
dtycycle	0	
cycle	P	events from which exps? Prim/Second/Both
ra_targ	16.01	Observer's specified target RA [deg]
dec_targ	-72.032028	Observer's specified target Dec [deg]
ra_nom	15.914605511649	Nominal RA [deg]
dec_nom	-72.091097570254	Nominal Dec [deg]
roll_nom	245.06960921794	Nominal Roll [deg]
revision	2	Processing version of data
ontime	25432.800379038	Sum of GTIs [s]
livetime	24191.762940205	Livetime [s]
ontime7	25432.800379038	Sum of GTIs [s]
l2events	100580	Number of level 2 events



2 OBI

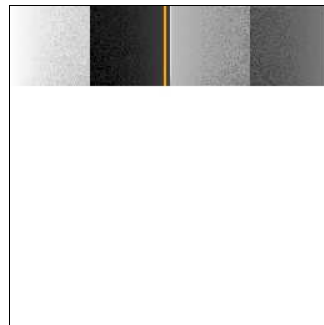
2.1 OBI

2.1.1 Images



2.1.2 Bias

Chip 7



2.1.3 Parameters

obi_num	0	Obi number	sched_exp_time	25369.000000	[s] Scheduled observation exposure time
ascdsver	10.3	Processing system revision	ontime	25432.800379038	Sum of GTIs [s]
caldbver	4.6.4	 	ontime7	25432.800379038	Sum of GTIs [s]
date	2014-12-01T09:11:59	Date and time of file creation	l1events	121270	Number of level 1 events
revision	2	Processing version of data			

2.1.4 Events

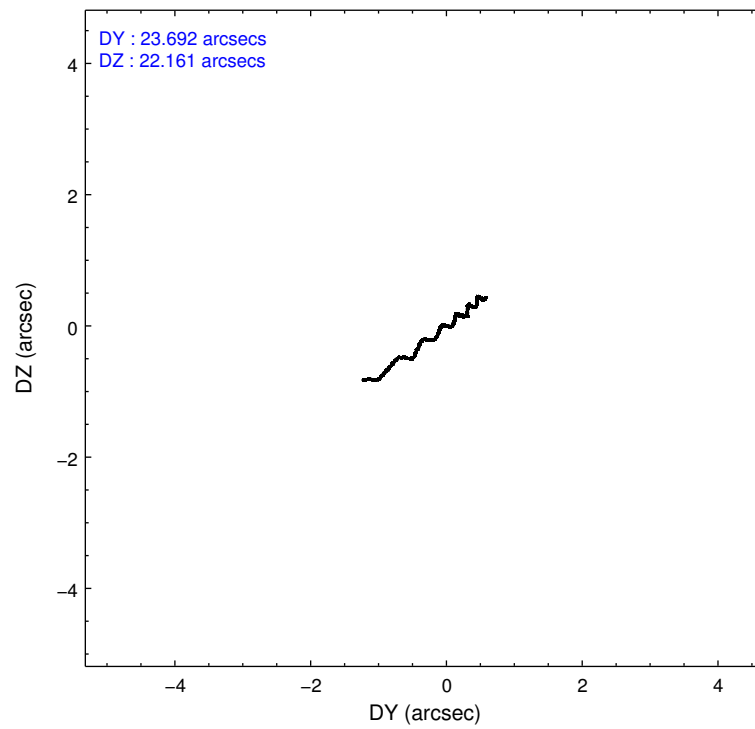
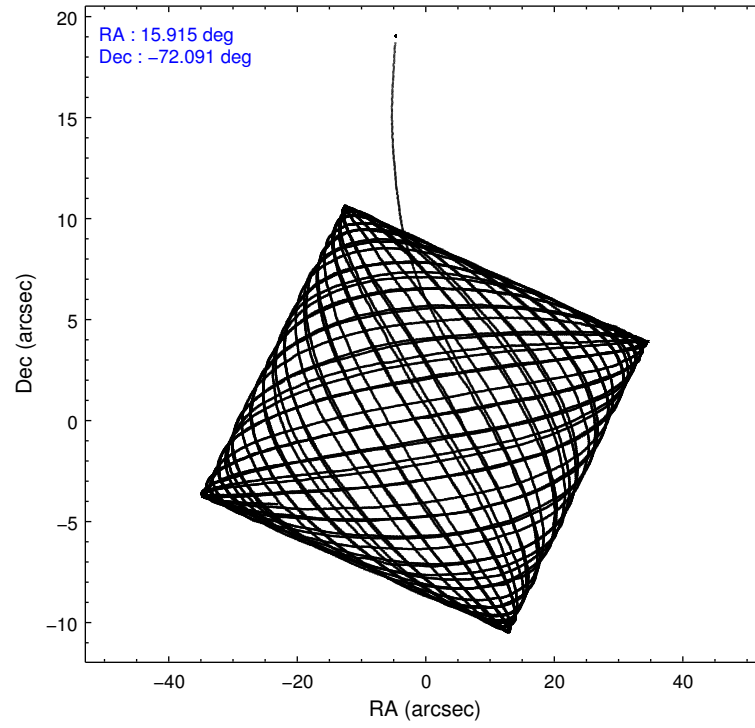
	ccd 7
level 1 events	121270
rejected events	19856
rejected %	16%

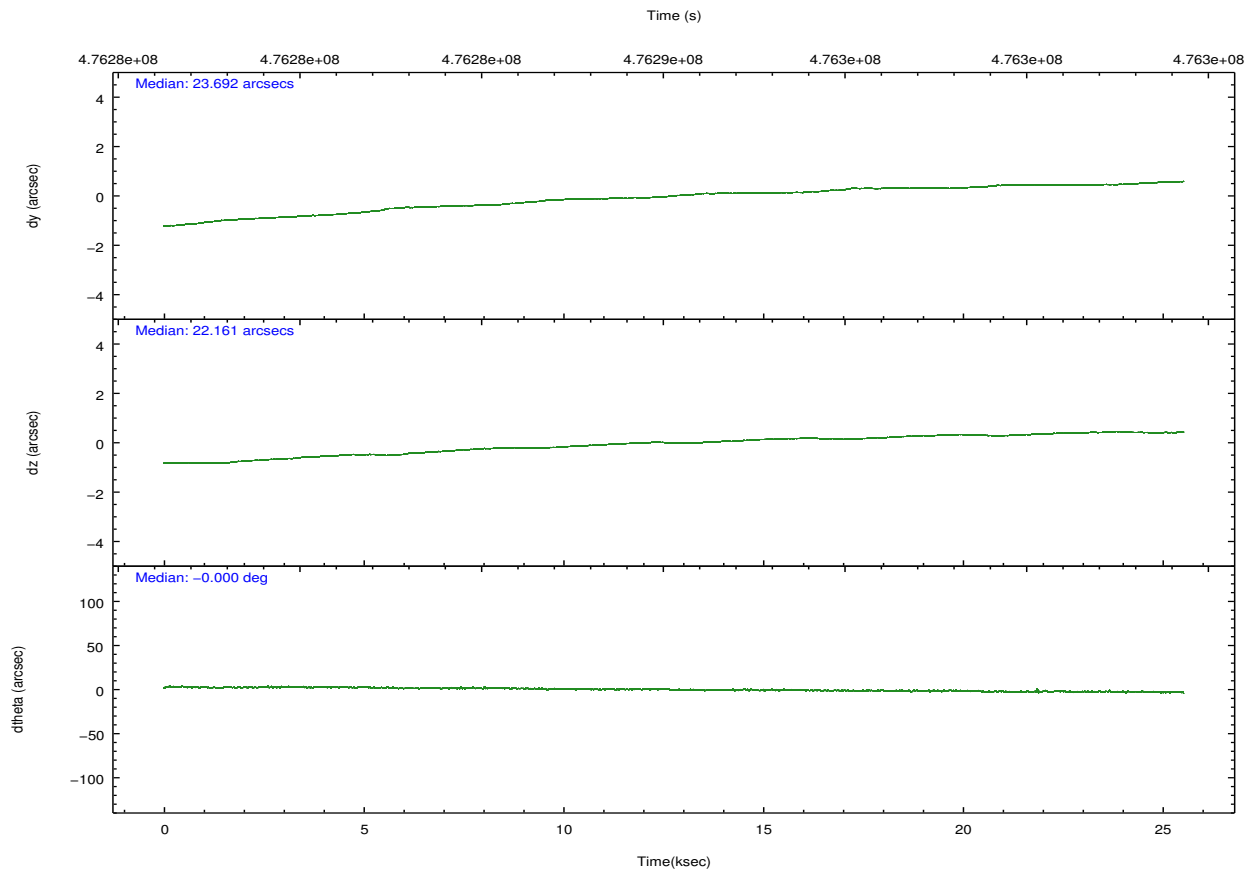
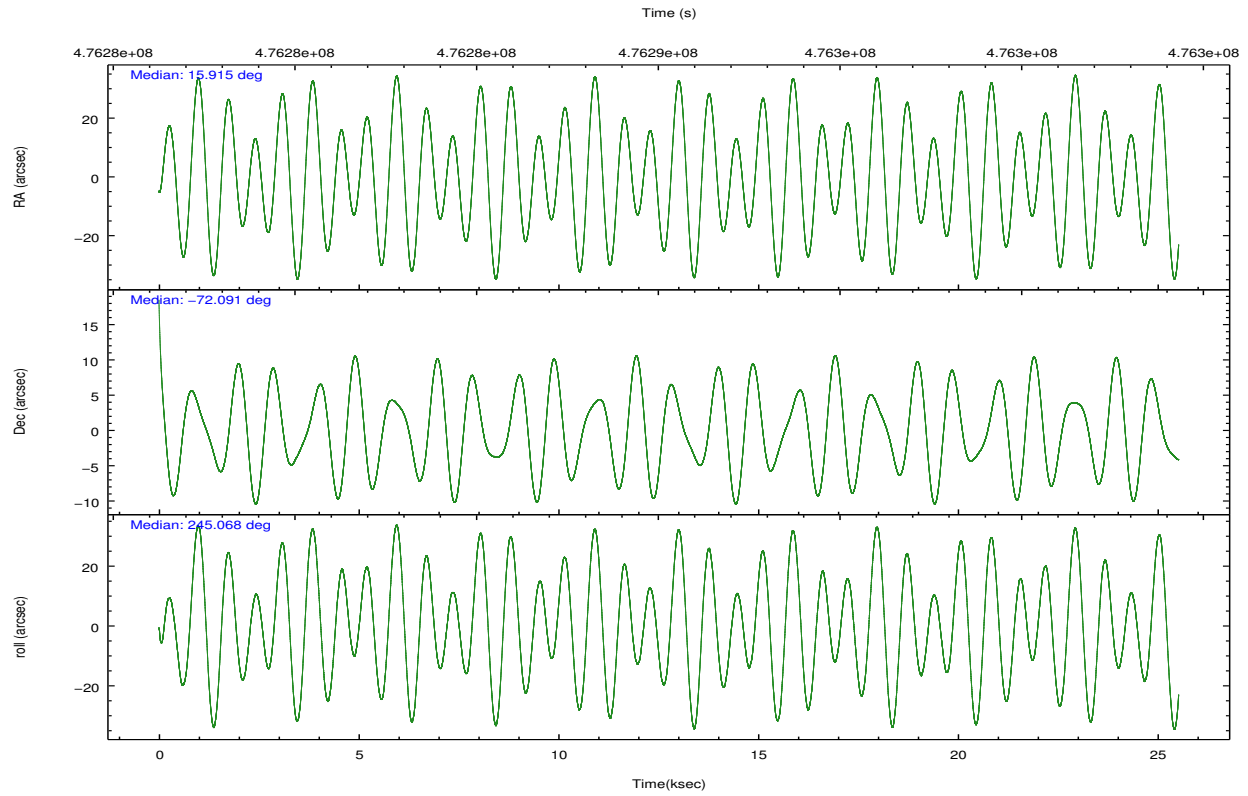
	ccd 7
grade 0 events	31763
	26%
grade 1 events	134
	0%
grade 2 events	26219
	21%
grade 3 events	11887
	9%
grade 4 events	11667
	9%
grade 5 events	4903
	4%
grade 6 events	19886
	16%
grade 7 events	14811
	12%

2.2 Compared Parameters

Parameter	Planned	Actual	Parameter	Planned	Actual
Instrument	ACIS	ACIS	Obspar format version number	7	7
Detector	ACIS-7	ACIS-7	Obspar file type	PREDICTED	ACTUAL
Grating	NONE	NONE	Obspar update status	NONE	UPDATED
Data mode	VFAINT	VFAINT	Number of optional ACIS chips dropped	0	0
Observation mode	POINTING	POINTING	On-chip summing requested	N	N
[deg] Pointing RA	15.905593	15.91460551164852	Subarray requested	CUSTOM	1/4
[deg] Pointing Dec	-72.063892	-72.09109757025388	Subarray start row	769	769
[deg] Pointing Roll	244.904402	245.0696092179421	Subarray row count	256	256
[s] Window start time (MET)	470707267.184000	470707267.184000	Alternating exposures requested	N	N
[s] Window stop time (MET)	483667267.184000	483667267.184000	[s] Primary exposure time	0.000000	0.8
[mm] SIM focus pos	-0.684267	-0.6828225247311905			
[mm] SIM defocus	0	0.001444936568705701			
[mm] SIM translation stage pos	-200.662523	-200.6624755869005			
[mm] SIM translation stage offset	10.53	10.52995300389267			
[s] Observation start time (MET)	476277681.184000	476276778.17218			
Observation start date	2013-02-03T11:20:14	2013-02-03T11:06:18			
[s] Observation end time (MET)	476303050.184000	476304163.61115			
Observation end date	2013-02-03T18:23:03	2013-02-03T18:42:43			
Read mode	TIMED	TIMED			

2.3 Aspect



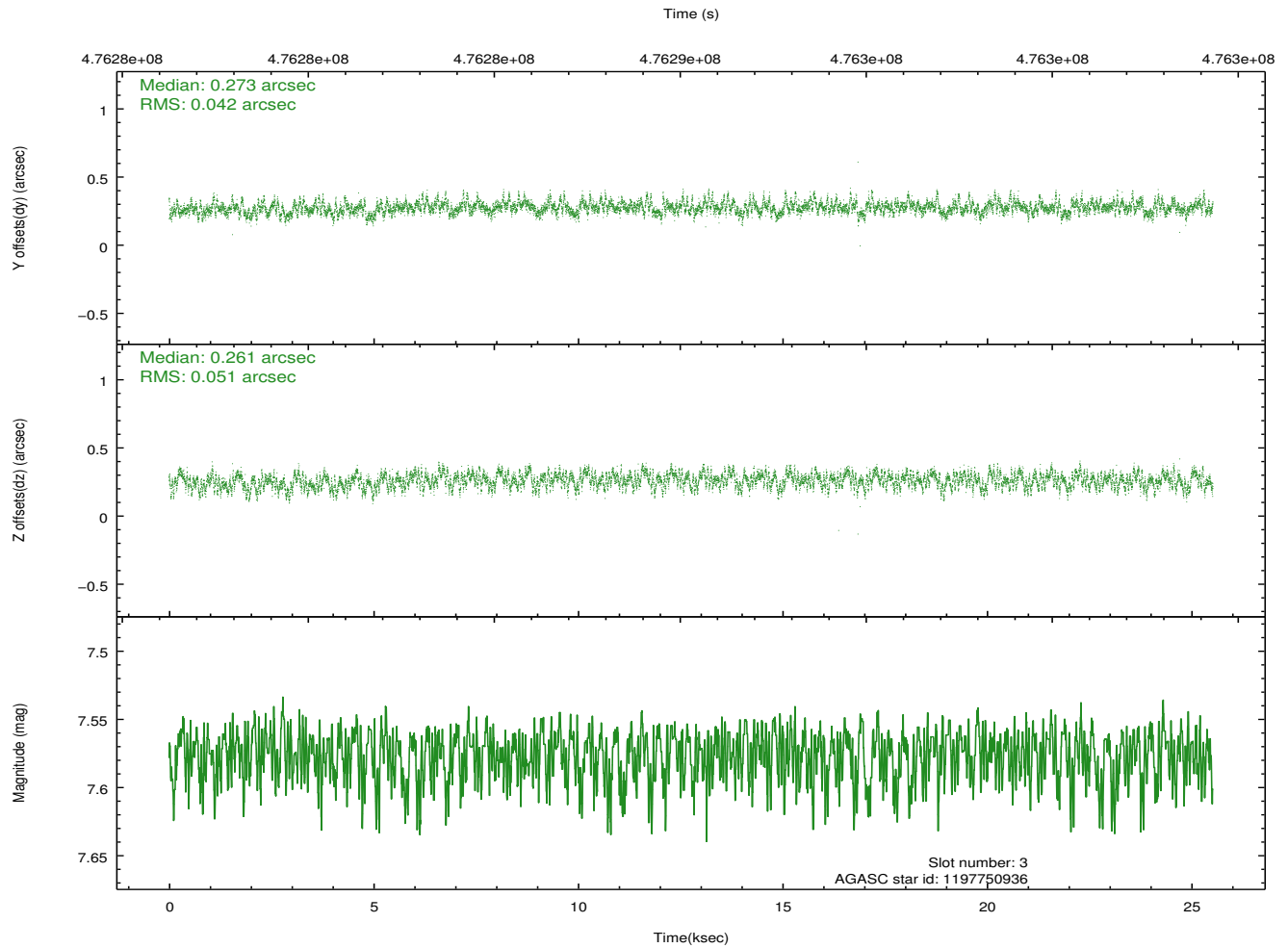
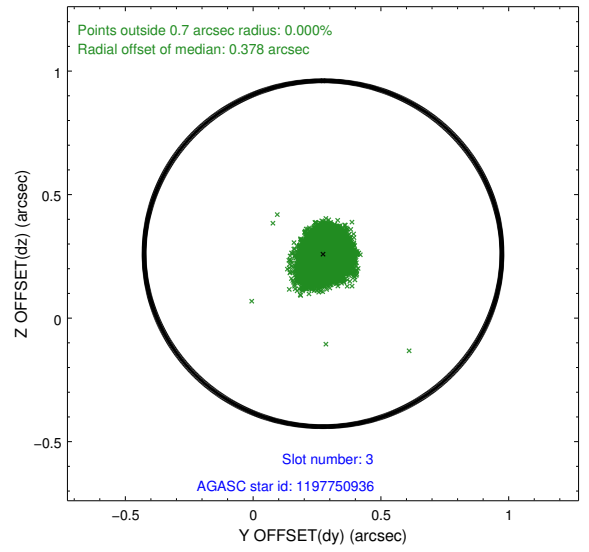
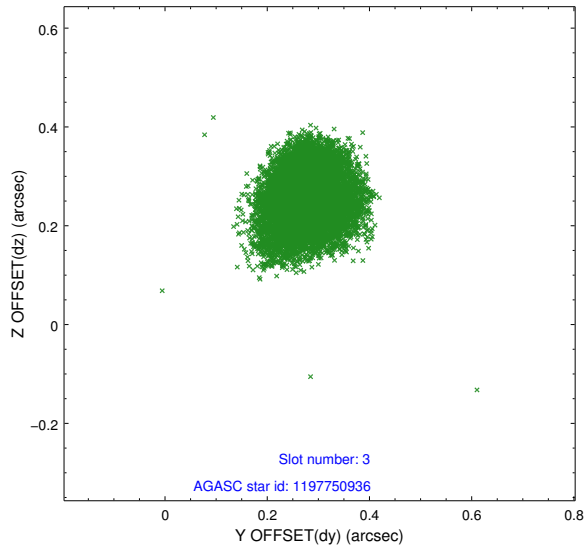


Slot Statistics

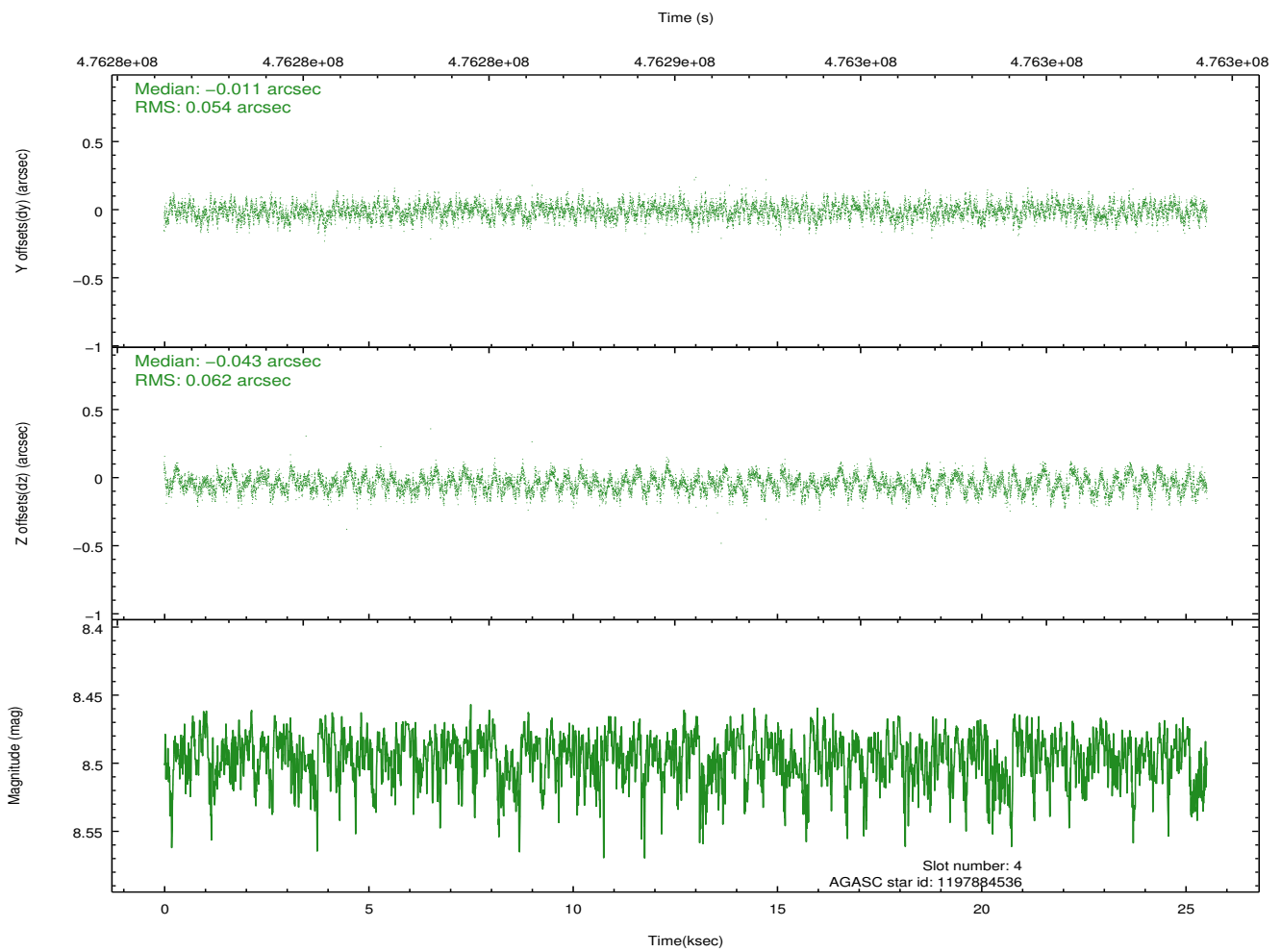
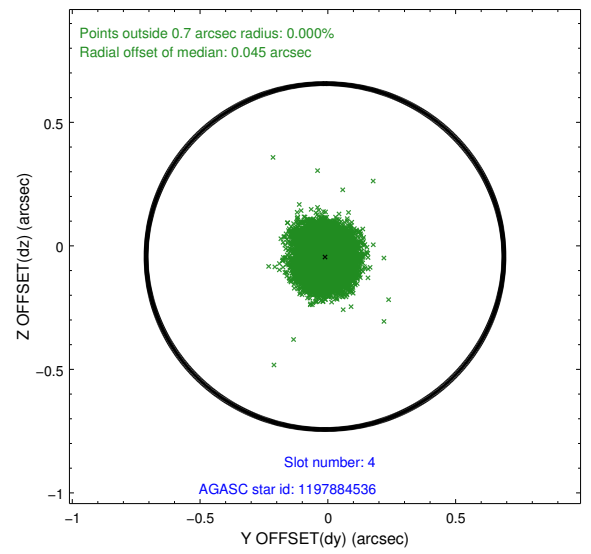
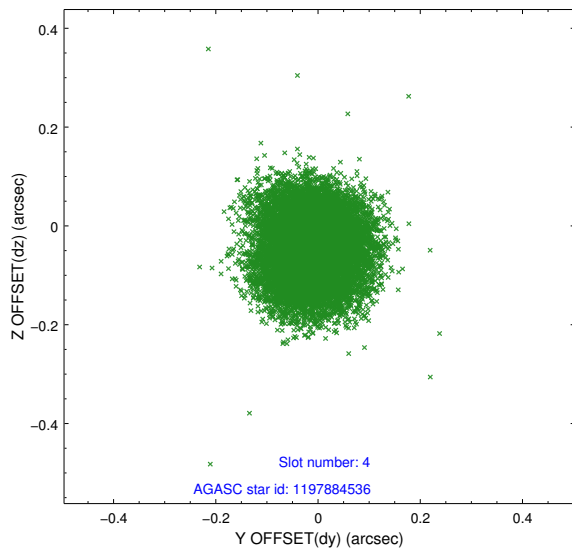
slot	status	used	id	mag	n_pts	med_dy	med_dz	dr1	dr2	ra	dec	mean_y	mean_z
0	FID		ACIS-S-2	6.97	6226	-0.068	0.147	0.024	0.065	0.000000	0.000000	-777.58	-1526.37
1	FID		ACIS-S-4	7.03	6225	0.274	-0.006	0.017	0.045	0.000000	0.000000	2136.11	381.68
2	FID		ACIS-S-5	7.02	6227	-0.238	-0.131	0.020	0.045	0.000000	0.000000	-1830.33	375.64
3	GUIDE	used	1197750936	7.57	12451	0.273	0.261	0.070	0.114	15.387940	-71.549550	-1423.50	-1317.57
4	GUIDE	used	1197884536	8.49	12447	-0.011	-0.043	0.089	0.138	17.160729	-71.835289	-1329.39	932.80
5	GUIDE	used	1197884712	8.30	12445	-0.056	-0.028	0.068	0.108	16.087398	-72.252690	531.21	469.45
6	GUIDE	used	1197885104	9.36	12408	0.043	-0.137	0.118	0.199	17.845067	-72.189368	-464.24	2139.88
7	GUIDE	used	1198189696	7.39	12448	-0.250	-0.053	0.076	0.117	15.223750	-72.697522	2379.04	308.80

2.4 Star Slots

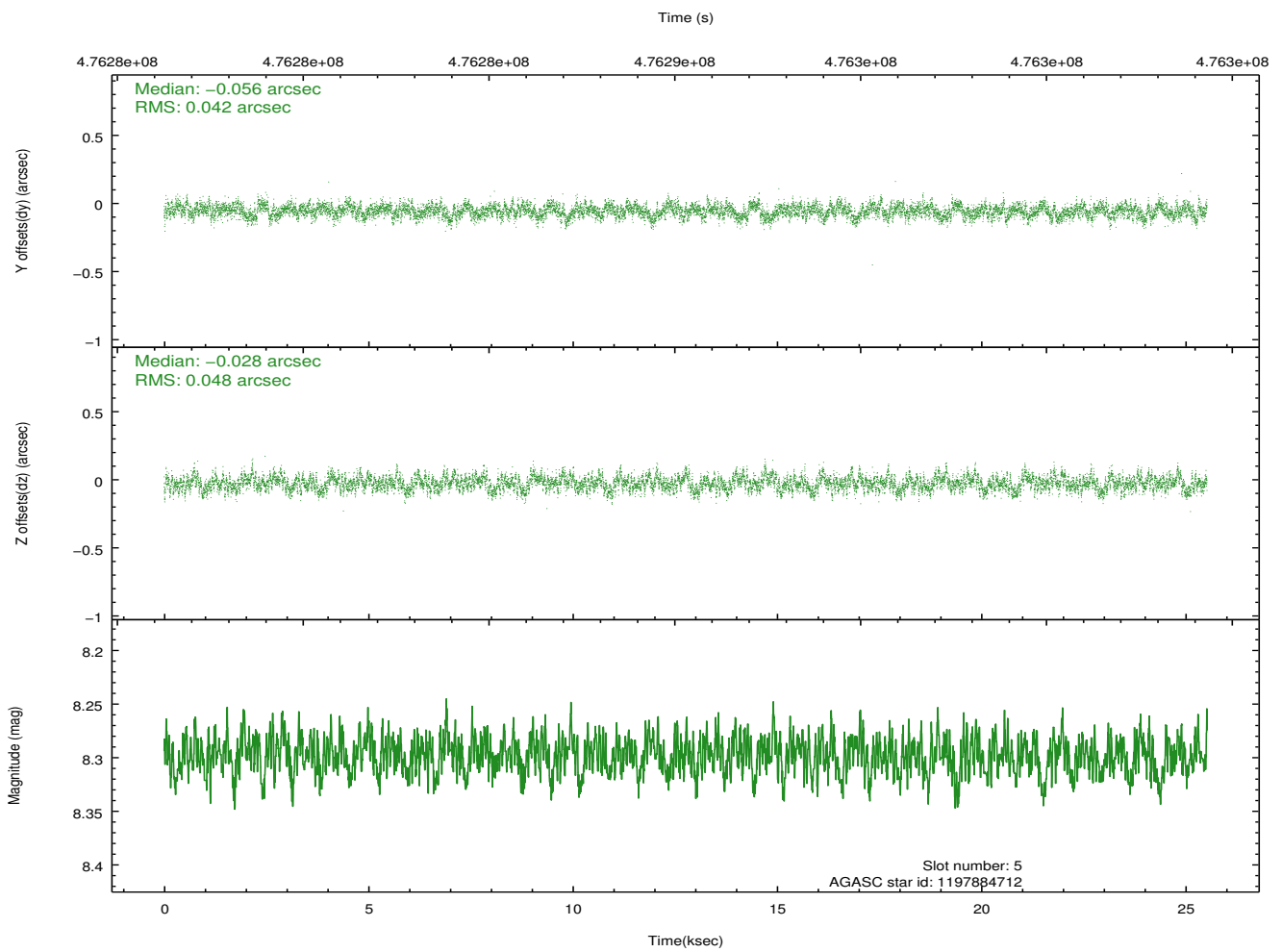
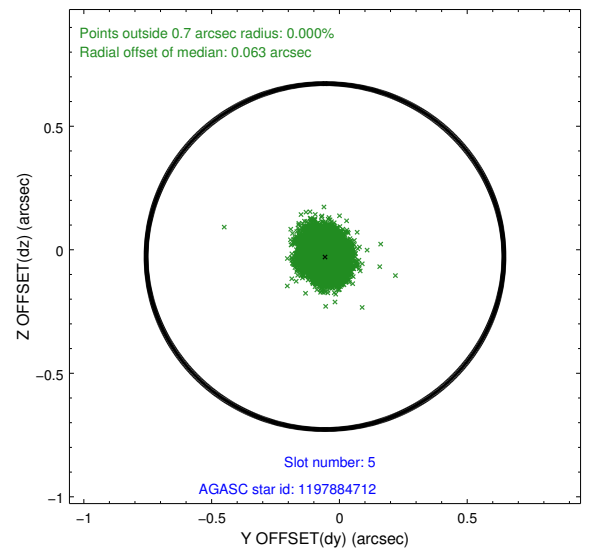
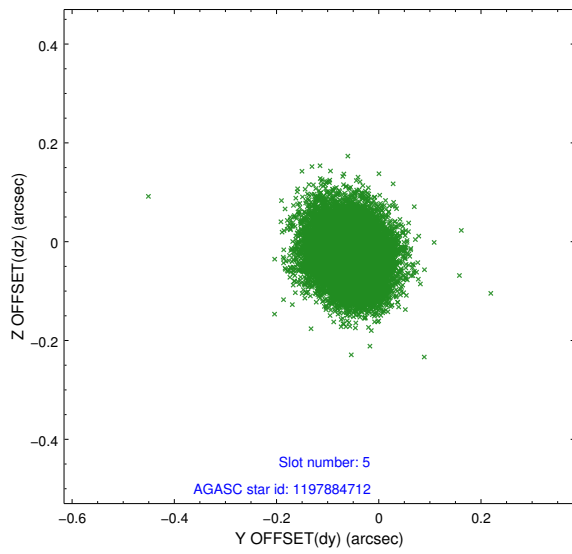
2.4.1 Slot 3



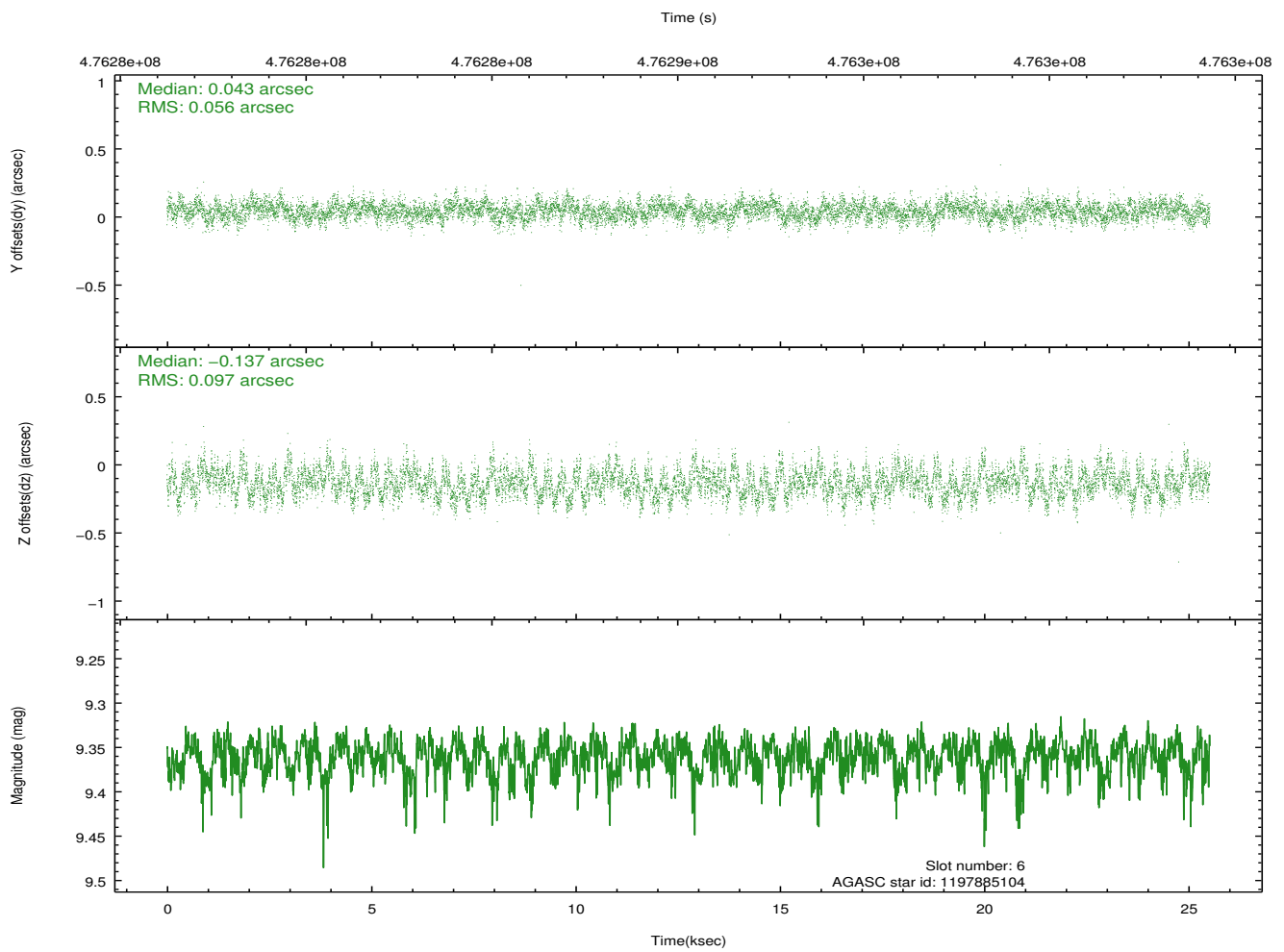
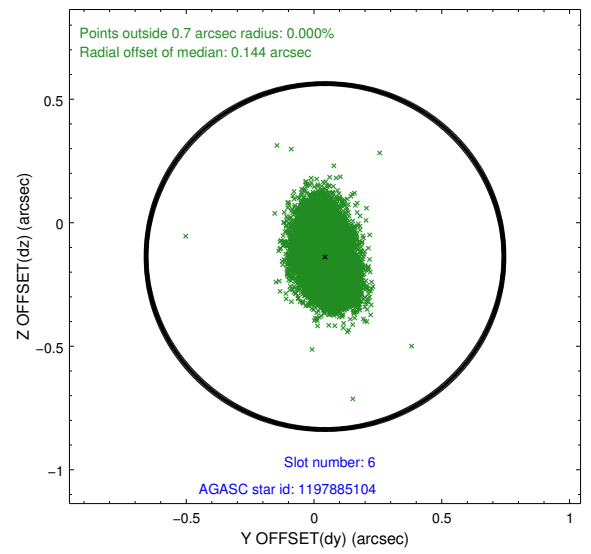
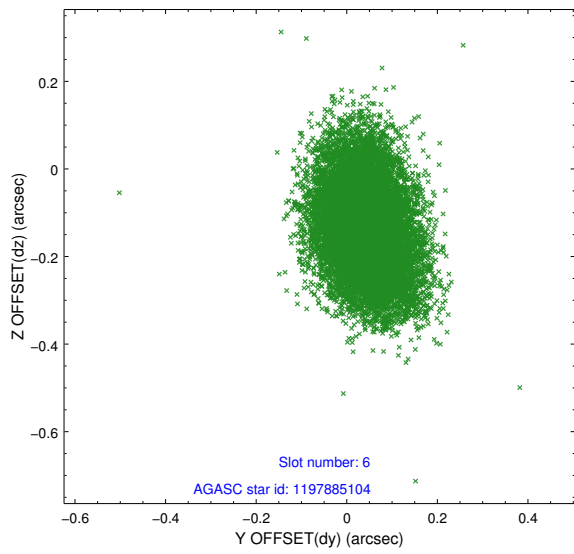
2.4.2 Slot 4



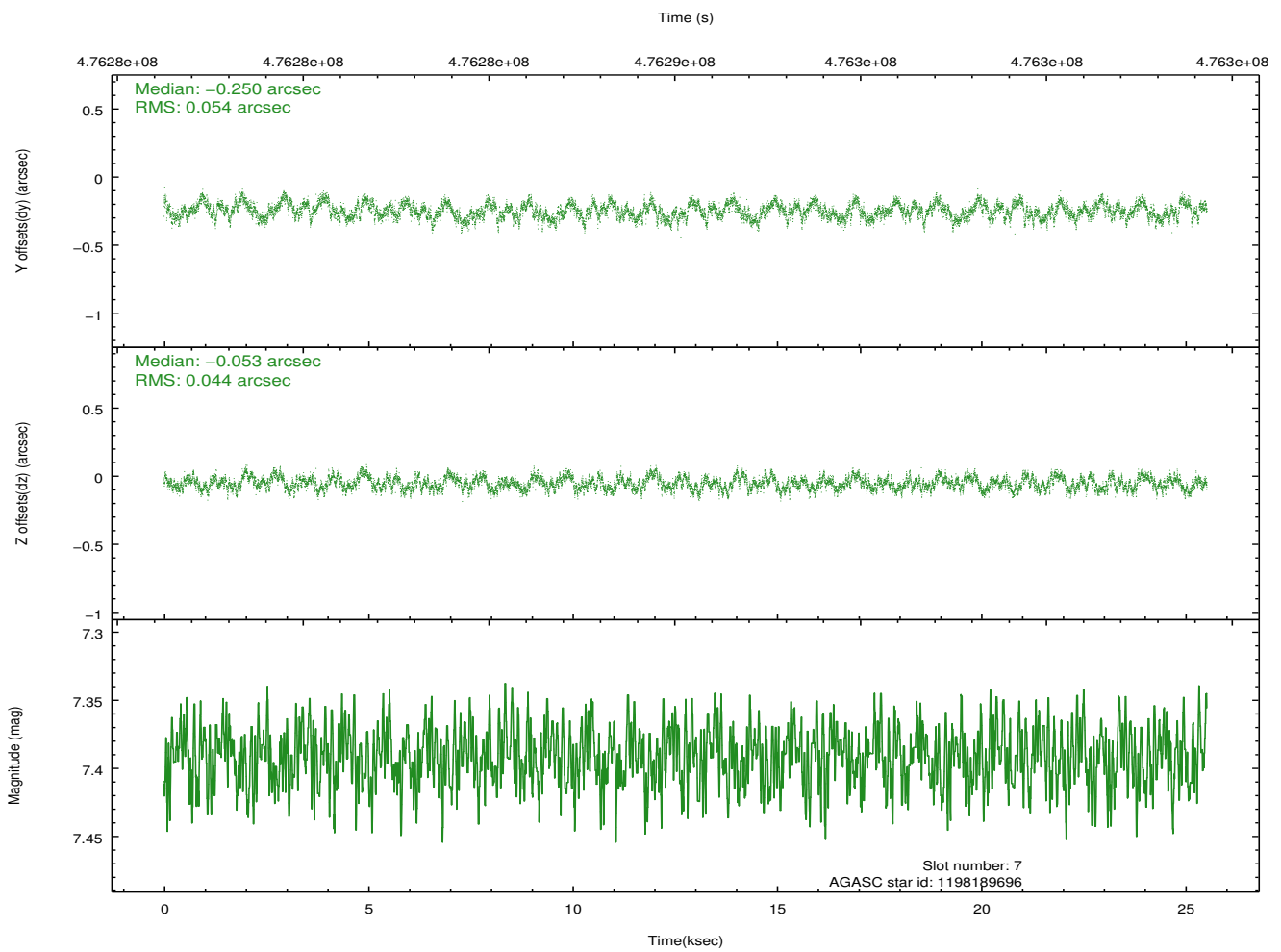
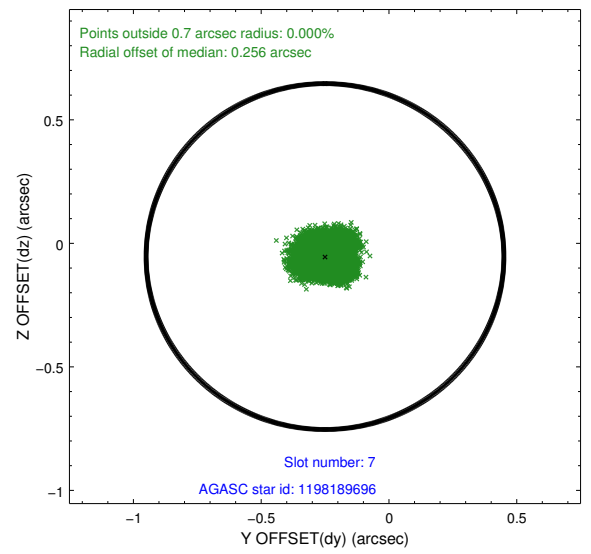
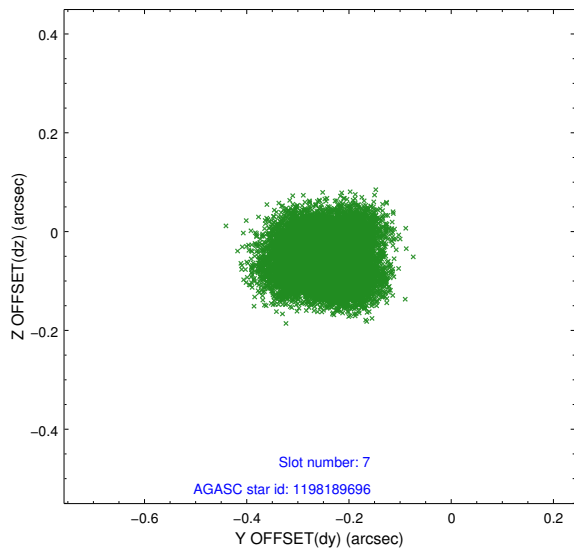
2.4.3 Slot 5



2.4.4 Slot 6

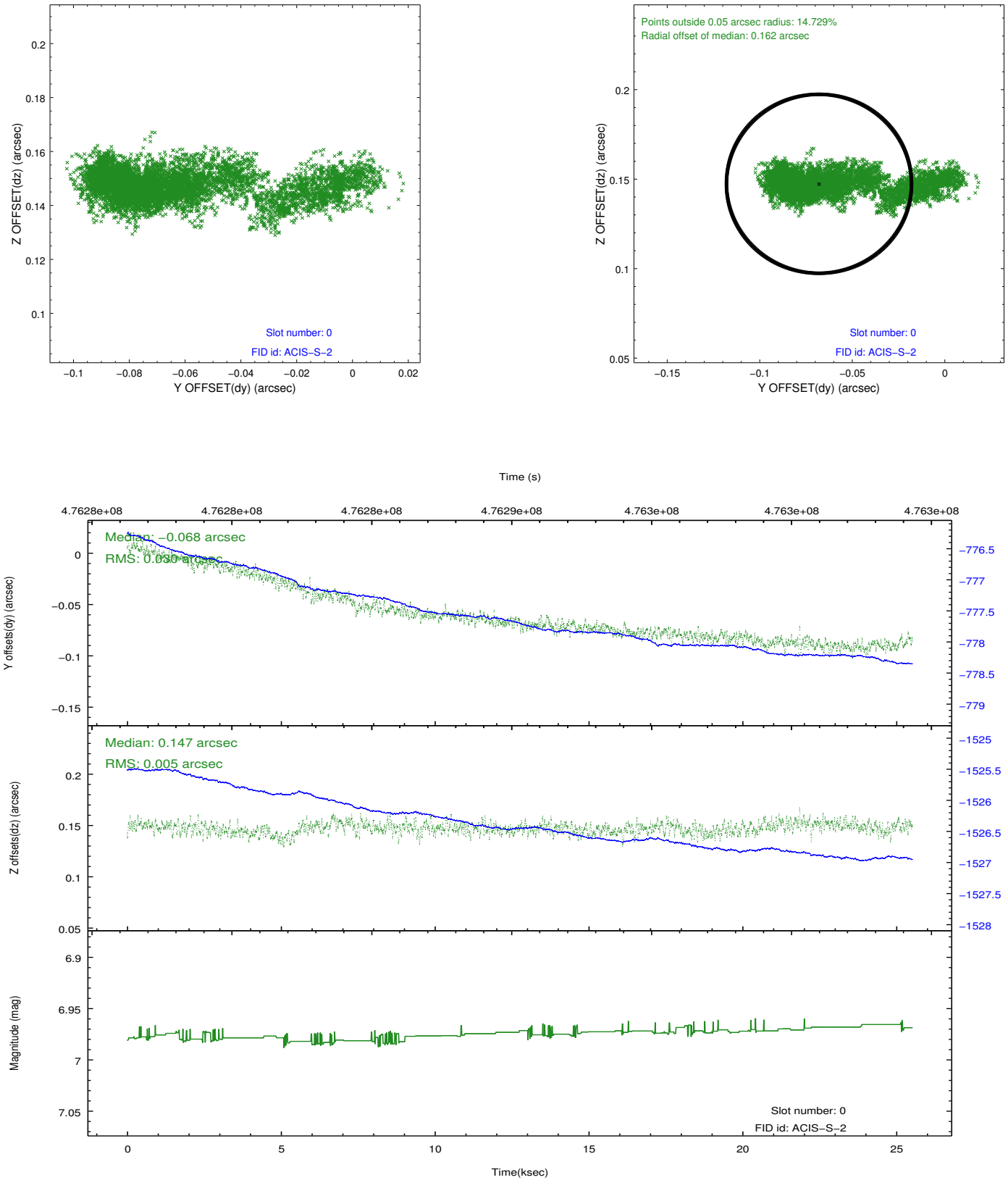


2.4.5 Slot 7

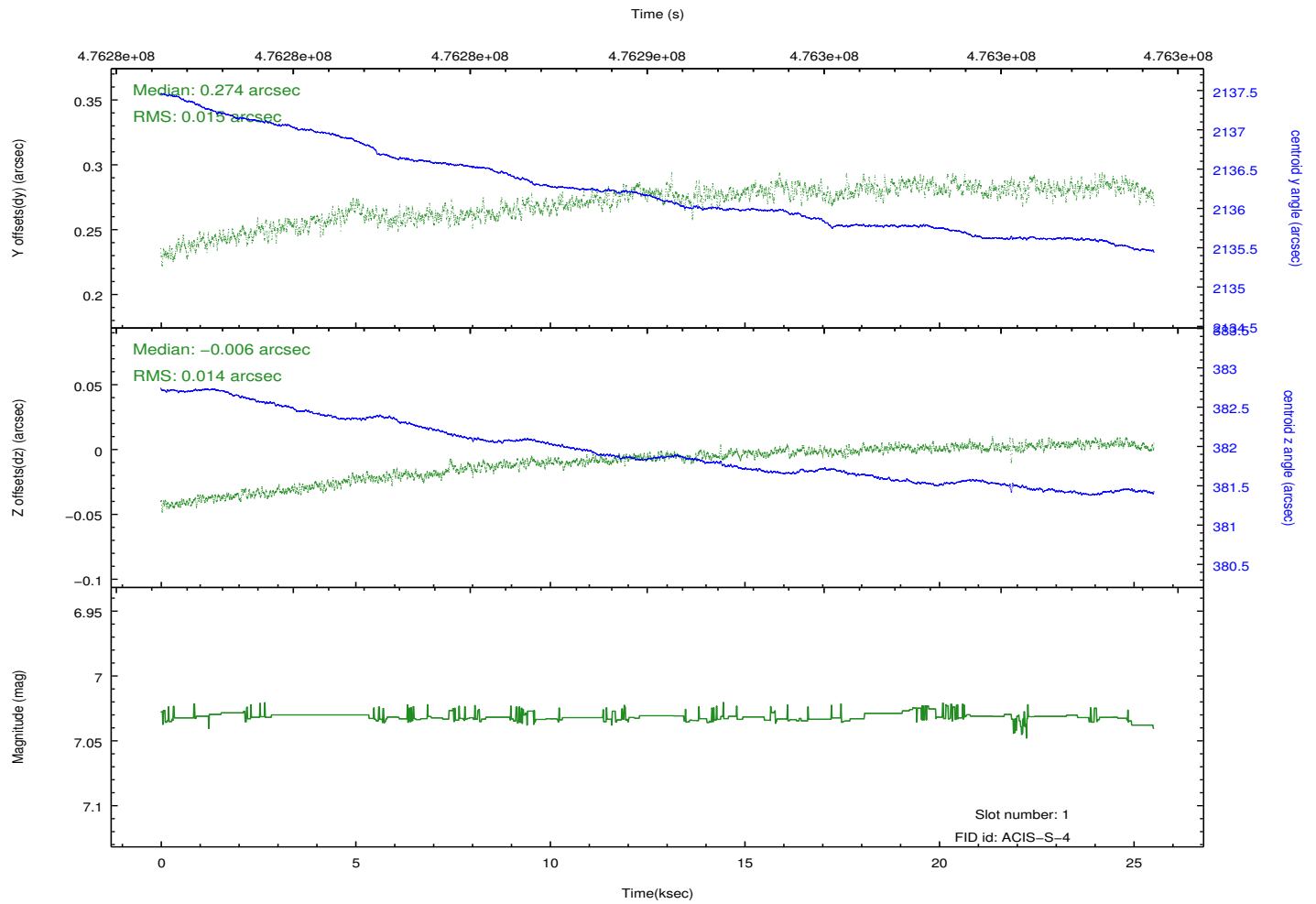
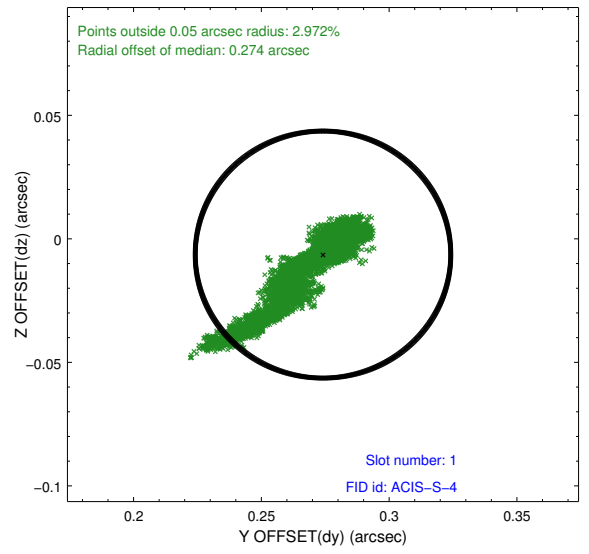
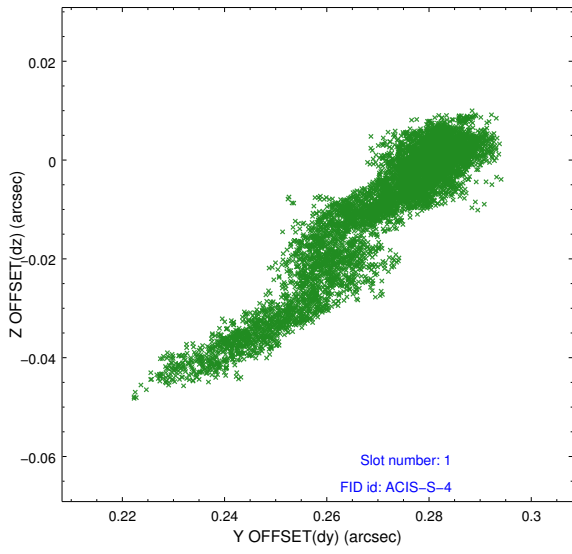


2.5 FID Slots

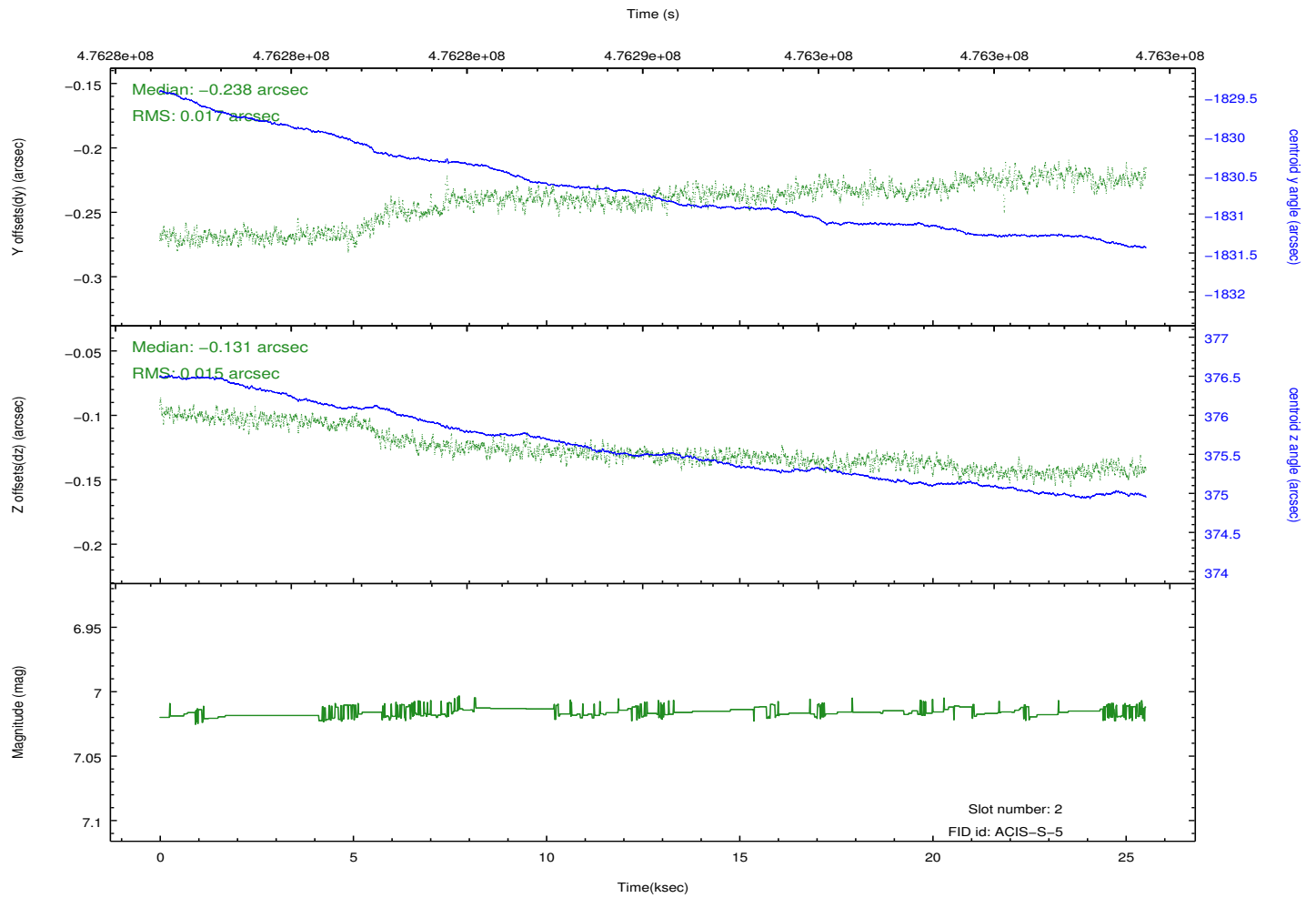
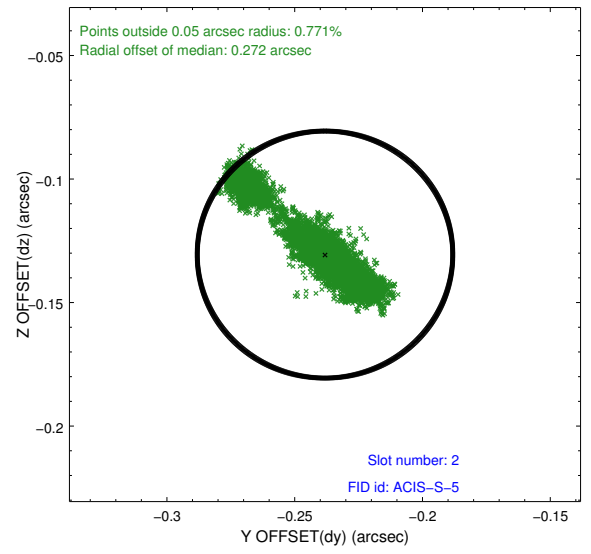
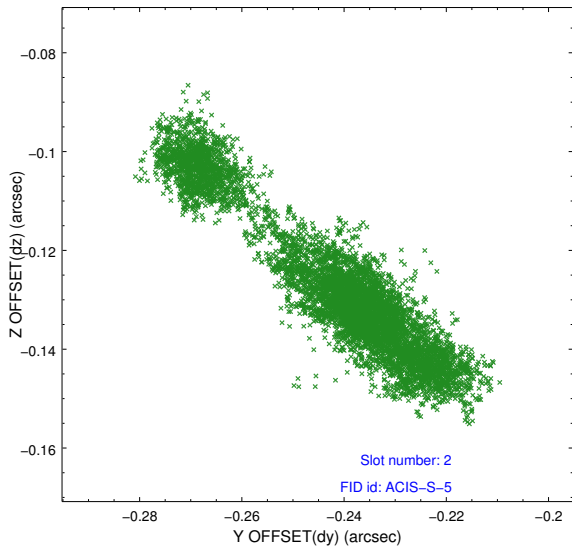
2.5.1 Slot 0



2.5.2 Slot 1



2.5.3 Slot 2



A Summary

A.1 Status

V&V Scientist	Jen Lauer
V&V Date (YYYY-MM-DD)	2014.12.09
V&V Edition	1
V&V Disposition and Status	OK
V&V Charge Time	25.432800379038

A.2 Comments

Window constraint met.

=====

These data have been reprocessed with new aspect alignment calibration files that correct small mean offsets (up to 0.4 arcsecs) and improve overall astrometric accuracy. The new calibration was determined using data from the time period being reprocessed and was performed using cross-correlation of X-ray sources with radio and optical counterparts.