

V&V Reference Report

L2 ASCDS Version : 8.4.5

Observation 15587 - L2 Version 2
Chandra X-Ray Center

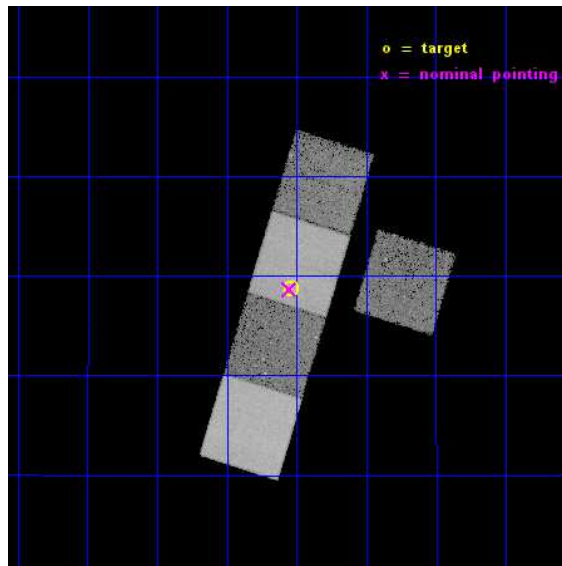
L2 Processing Date : Nov 29 2014

Contents

1	Front	2
2	OBI	3
2.1	OBI	3
2.1.1	Images	3
2.1.2	Bias	3
2.1.3	Parameters	4
2.1.4	Events	4
2.2	Compared Parameters	5
2.3	Aspect	6
2.4	Star Slots	9
2.4.1	Slot 3	9
2.4.2	Slot 4	10
2.4.3	Slot 5	11
2.4.4	Slot 6	12
2.4.5	Slot 7	13
2.5	FID Slots	14
2.5.1	Slot 0	14
2.5.2	Slot 1	15
2.5.3	Slot 2	16
A	Summary	17
A.1	Status	17
A.2	Comments	17

1 Front

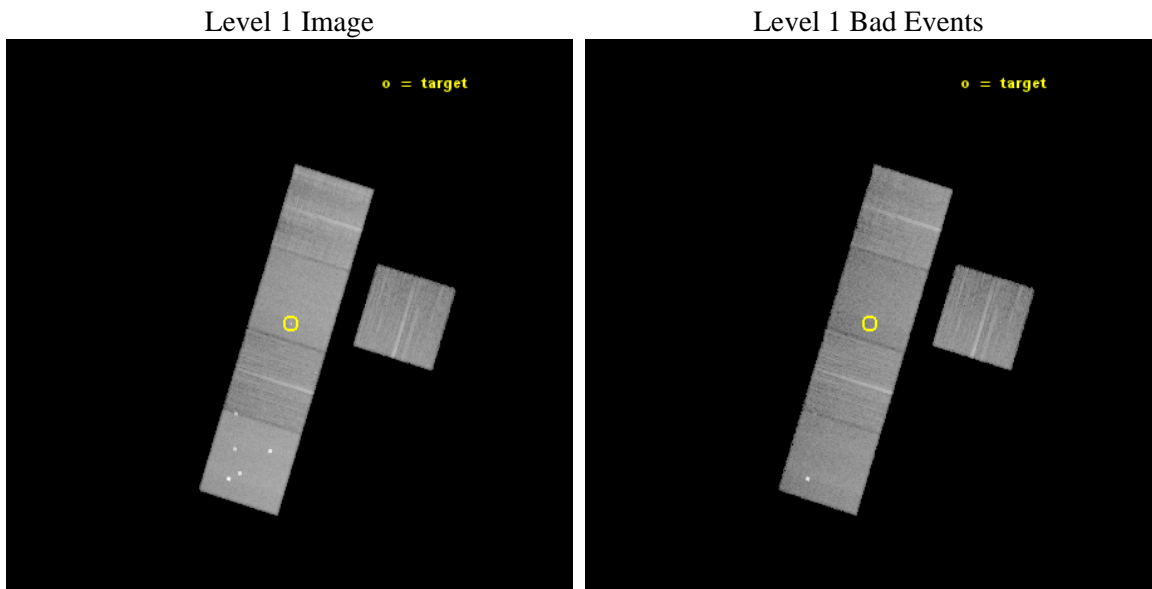
seq_num	702893	Sequence number
obs_id	15587	Observation id
title	NGC 660: a missing nearby Compton-thick AGN?	Proposal title
observer	Dr. Stephen Murray	Principal investigator
object	NGC 660	Source name
dtycycle	0	
cycle	P	events from which exps? Prim/Second/Both
ra_targ	25.76	Observer's specified target RA [deg]
dec_targ	13.645111	Observer's specified target Dec [deg]
ra_nom	25.76299676047	Nominal RA [deg]
dec_nom	13.644308886962	Nominal Dec [deg]
roll_nom	287.15591347664	Nominal Roll [deg]
revision	2	Processing version of data
ontime	28061.200215816	Sum of GTIs [s]
livetime	27694.559976642	Livetime [s]
ontime3	28061.200215816	Sum of GTIs [s]
ontime5	28061.200215816	Sum of GTIs [s]
ontime6	28058.059205472	Sum of GTIs [s]
ontime7	28061.200215816	Sum of GTIs [s]
ontime8	28058.059165478	Sum of GTIs [s]
l2events	243914	Number of level 2 events



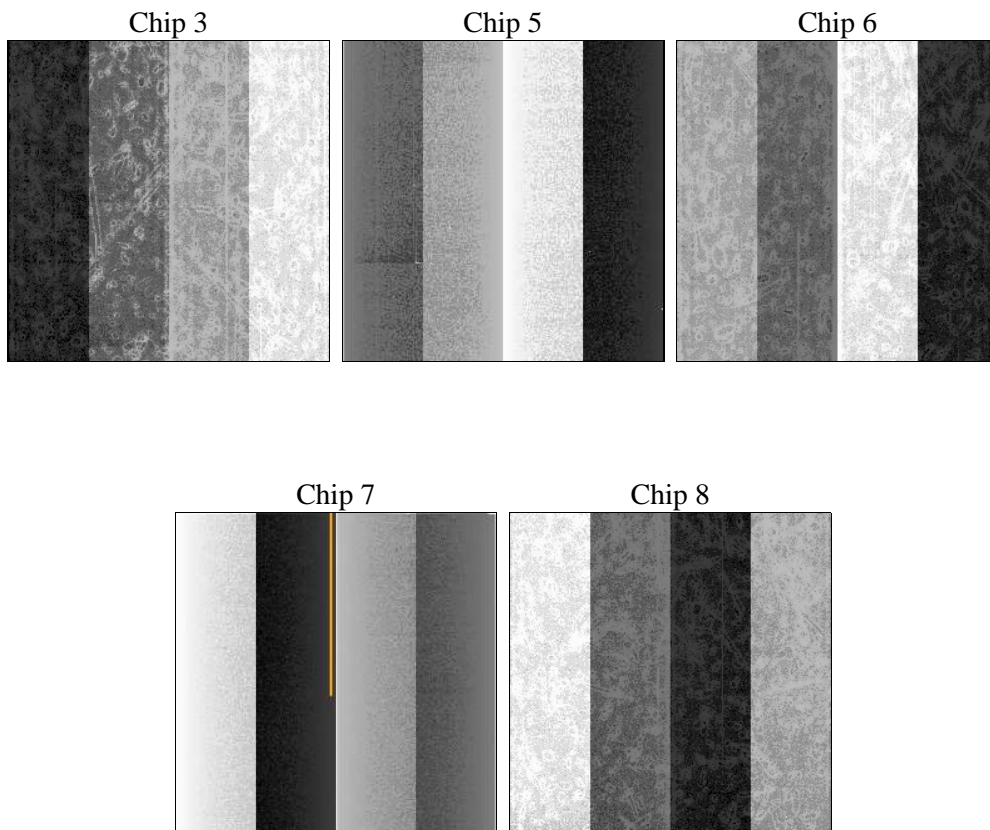
2 OBI

2.1 OBI

2.1.1 Images



2.1.2 Bias



2.1.3 Parameters

obi_num	0	Obi number	sched_exp_time	28000.000000	[s] Scheduled observation exposure time
ascdsver	10.3	Processing system revision	ontime	28061.200215816	Sum of GTIs [s]
caldbver	4.6.4	 	ontime3	28061.200215816	Sum of GTIs [s]
date	2014-11-29T14:23:33	Date and time of file creation	ontime5	28061.200215816	Sum of GTIs [s]
revision	2	Processing version of data	ontime6	28058.059205472	Sum of GTIs [s]
			ontime7	28061.200215816	Sum of GTIs [s]
			ontime8	28058.059165478	Sum of GTIs [s]
			l1events	950647	Number of level 1 events

2.1.4 Events

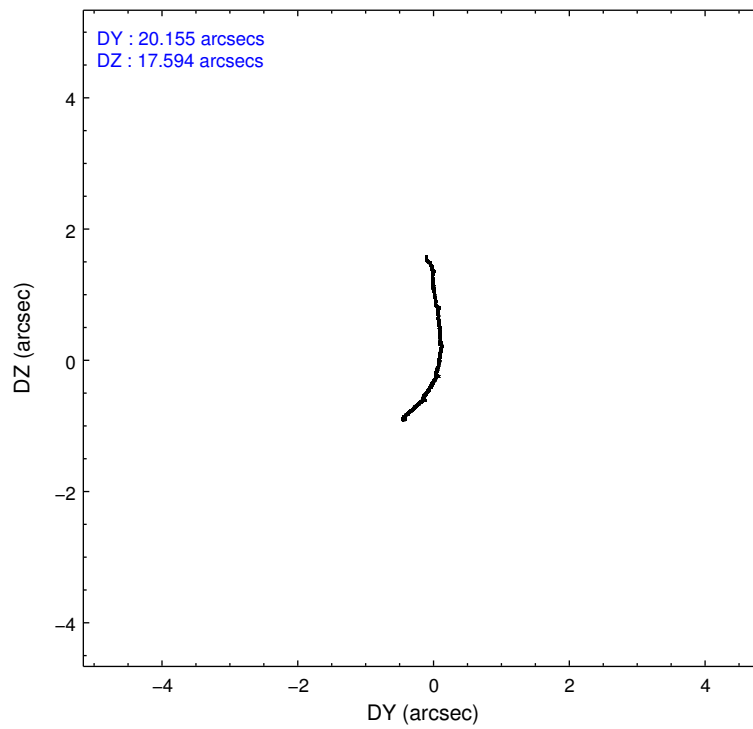
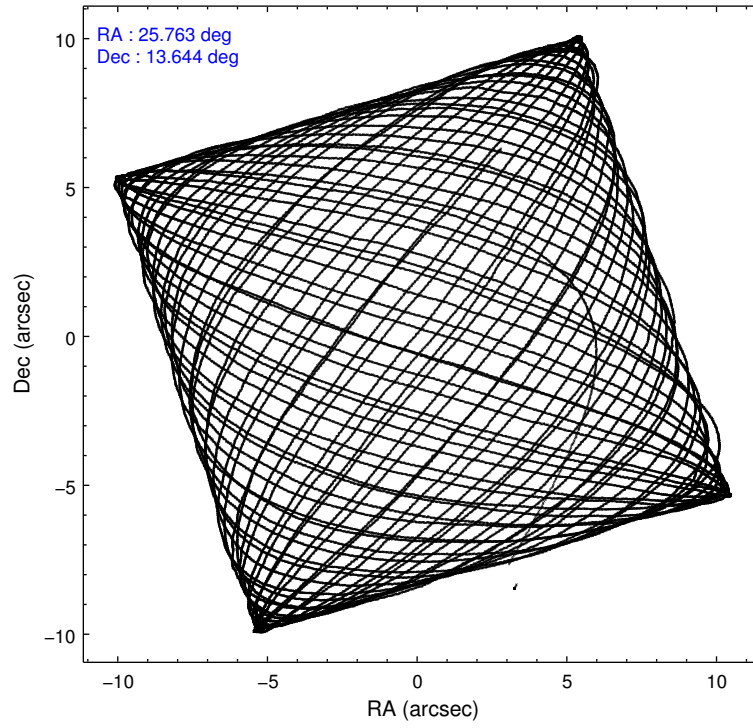
	ccd 3	ccd 5	ccd 6	ccd 7	ccd 8
level 1 events	140913	260338	154287	199140	195969
rejected events	124867	130985	136114	111311	143922
rejected %	88%	50%	88%	55%	73%

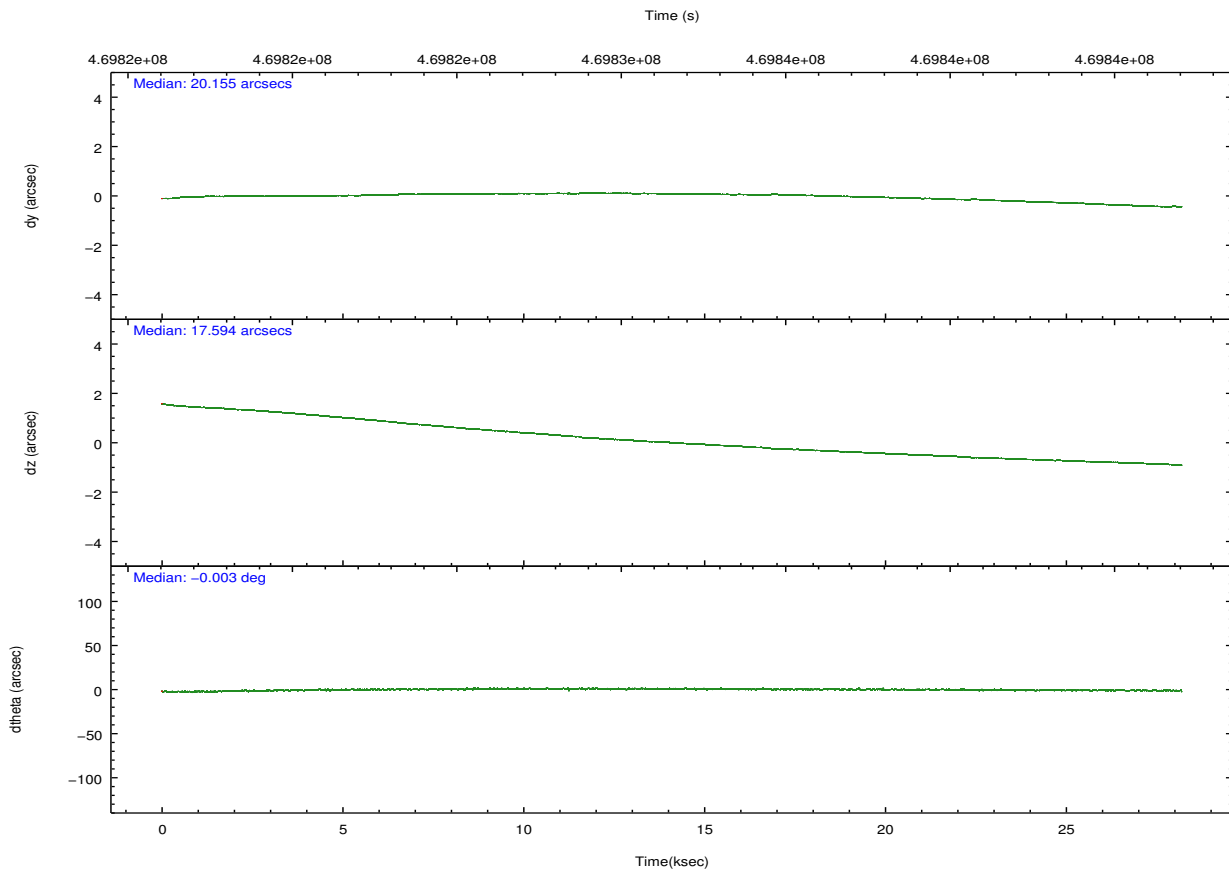
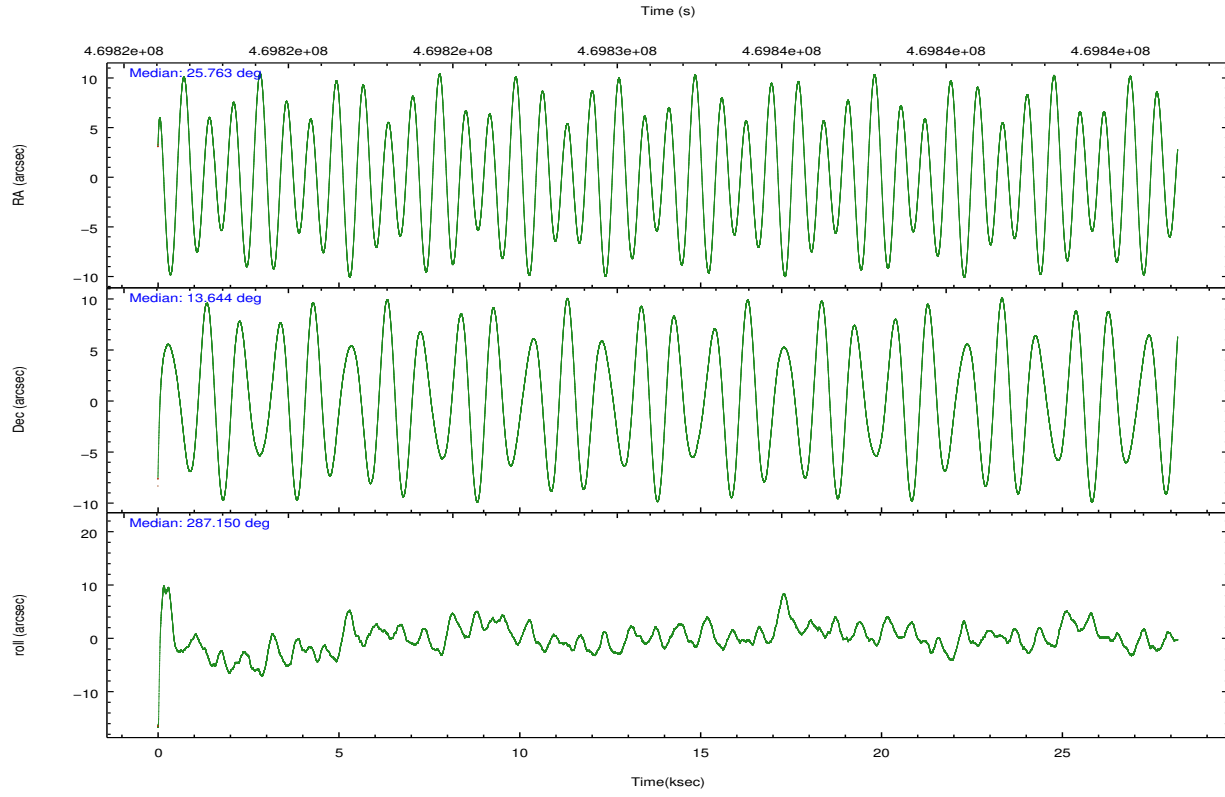
	ccd 3	ccd 5	ccd 6	ccd 7	ccd 8
grade 0 events	5582	21597	6279	7930	14760
	3%	8%	4%	3%	7%
grade 1 events	84	499	76	248	148
	0%	0%	0%	0%	0%
grade 2 events	3551	36993	4046	17767	12405
	2%	14%	2%	8%	6%
grade 3 events	1774	4041	1866	7746	5519
	1%	1%	1%	3%	2%
grade 4 events	1767	3940	1839	7534	5120
	1%	1%	1%	3%	2%
grade 5 events	7519	18376	7624	20458	11071
	5%	7%	4%	10%	5%
grade 6 events	3377	62814	4148	46872	14264
	2%	24%	2%	23%	7%
grade 7 events	117259	112078	128409	90585	132682
	83%	43%	83%	45%	67%

2.2 Compared Parameters

Parameter	Planned	Actual	Parameter	Planned	Actual
Instrument	ACIS	ACIS	Obspar format version number	7	7
Detector	ACIS-35678	ACIS-35678	Obspar file type	PREDICTED	ACTUAL
Grating	NONE	NONE	Obspar update status	NONE	UPDATED
Data mode	VFAINT	VFAINT	Number of optional ACIS chips dropped	0	0
Observation mode	POINTING	POINTING	On-chip summing requested	N	N
[deg] Pointing RA	25.742117	25.76299676047	Subarray requested	NONE	NONE
[deg] Pointing Dec	13.662631	13.64430888696238	Alternating exposures requested	N	N
[deg] Pointing Roll	287.004228	287.1559134766429	[s] Primary exposure time	0.000000	3.1
[mm] SIM focus pos	-0.684267	-0.6828225247311905			
[mm] SIM defocus	0	0.001444936568705701			
[mm] SIM translation stage pos	-190.132523	-190.1425803651734			
[mm] SIM translation stage offset	0	0.01005778216563158			
[s] Observation start time (MET)	469817626.184000	469816589.24915			
Observation start date	2012-11-20T16:52:39	2012-11-20T16:36:29			
[s] Observation end time (MET)	469845626.184000	469846411.11326			
Observation end date	2012-11-21T00:39:19	2012-11-21T00:53:31			
Read mode	TIMED	TIMED			

2.3 Aspect





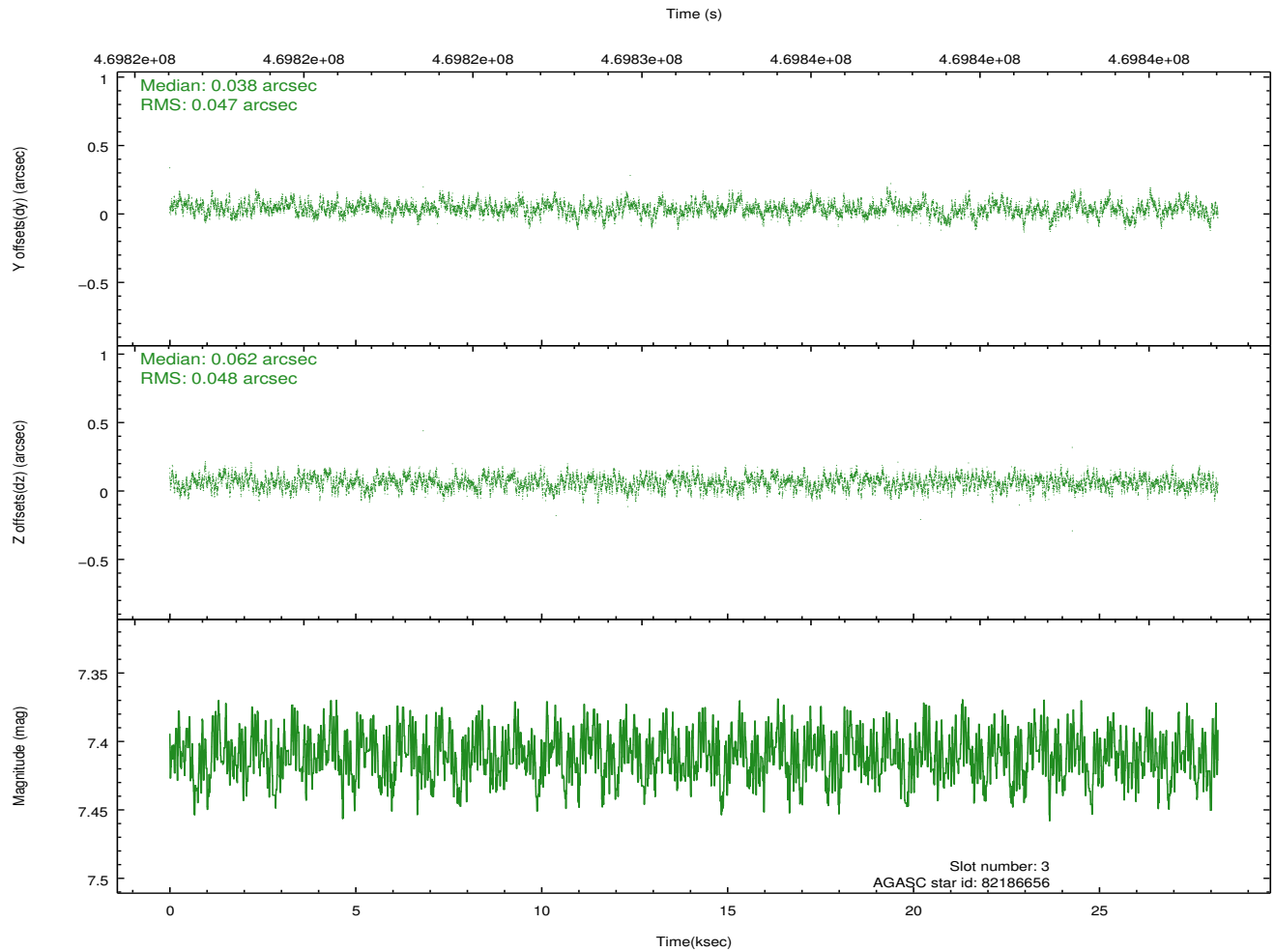
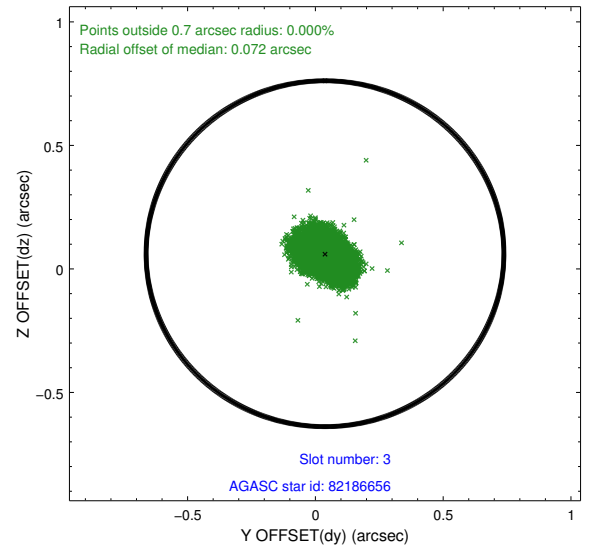
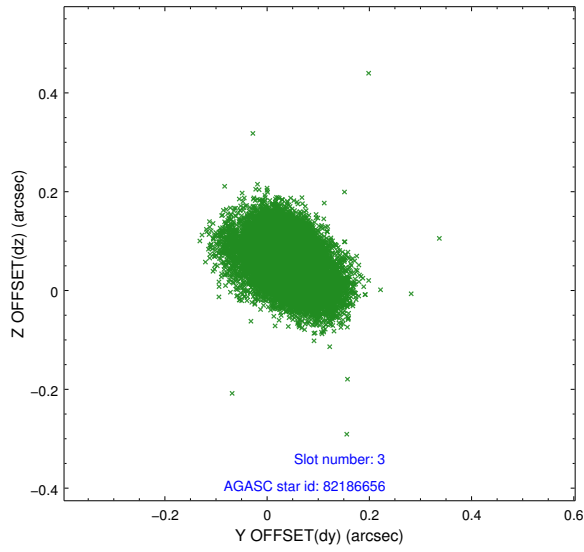
Slot Statistics

slot	status	used	id	mag	n_pts	med_dy	med_dz	dr1	dr2	ra	dec	mean_y	mean_z
0	FID		ACIS-S-2	6.96	6877	-0.117	-0.053	0.015	0.027	0.000000	0.000000	-773.37	-1739.16
1	FID		ACIS-S-4	7.05	6877	0.267	0.070	0.008	0.014	0.000000	0.000000	2140.29	169.28
2	FID		ACIS-S-5	7.07	6877	-0.181	-0.009	0.013	0.023	0.000000	0.000000	-1826.13	163.06
3	GUIDE	used	82186656	7.41	13751	0.038	0.062	0.070	0.118	25.268579	13.773450	-865.66	-1465.80
4	GUIDE	used	82189408	8.87	13748	-0.010	-0.047	0.094	0.155	25.276758	13.237916	984.25	-2005.97
5	GUIDE	used	82319672	9.05	13737	0.132	0.201	0.115	0.184	25.615508	13.734038	-374.31	-347.92
6	GUIDE	used	82320496	8.44	13739	-0.199	-0.052	0.088	0.139	26.104669	14.056528	-986.36	1625.43
7	GUIDE	used	82323016	9.80	13551	0.025	-0.156	0.166	0.263	26.097639	13.269169	1718.41	777.93

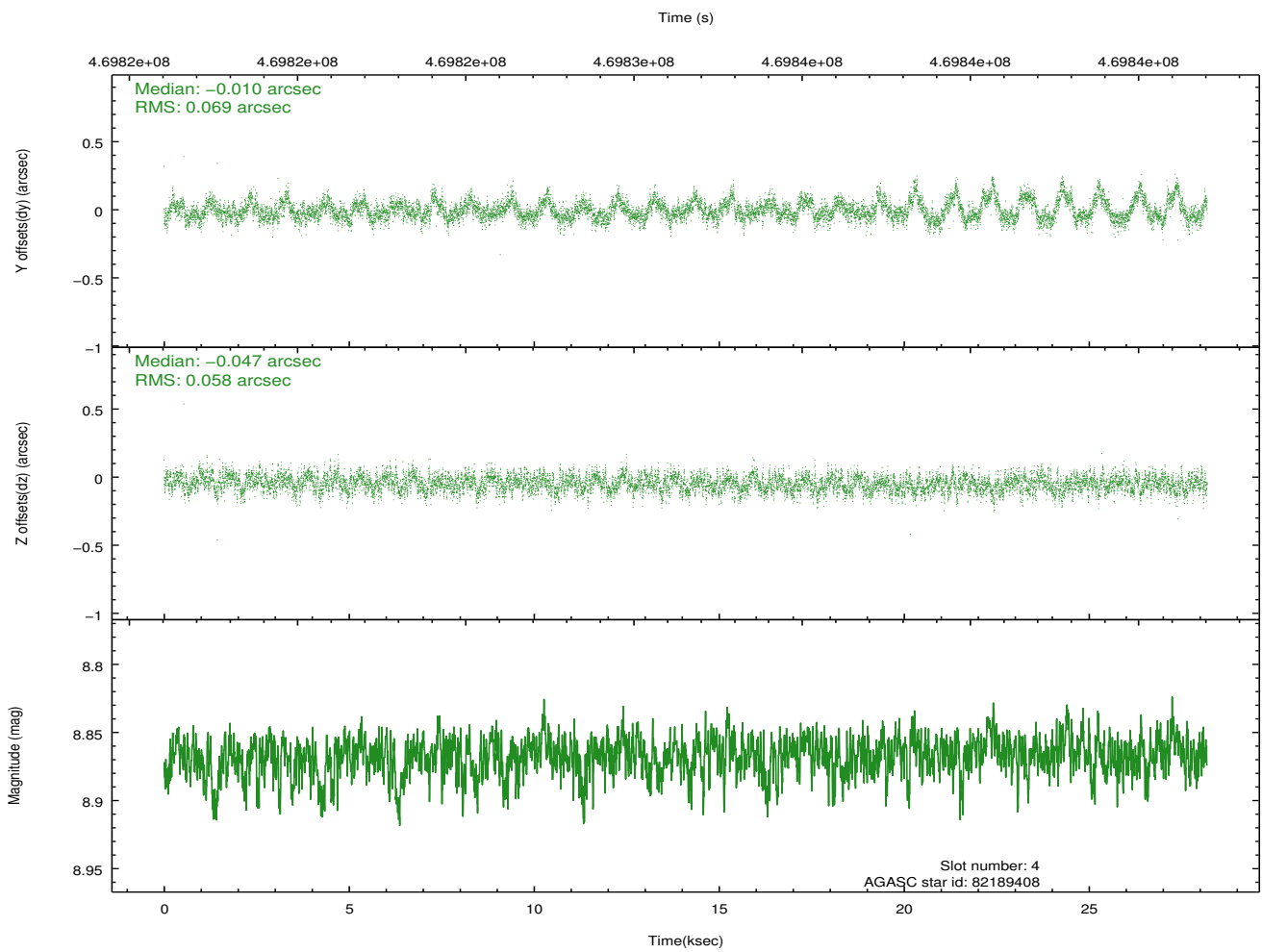
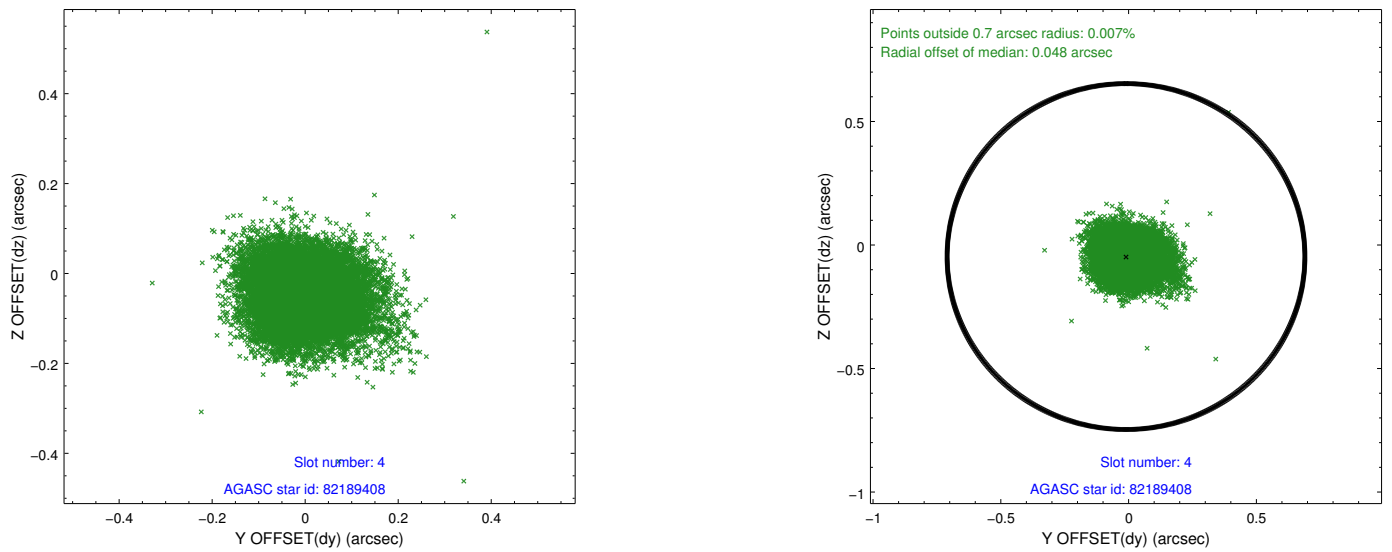
∞

2.4 Star Slots

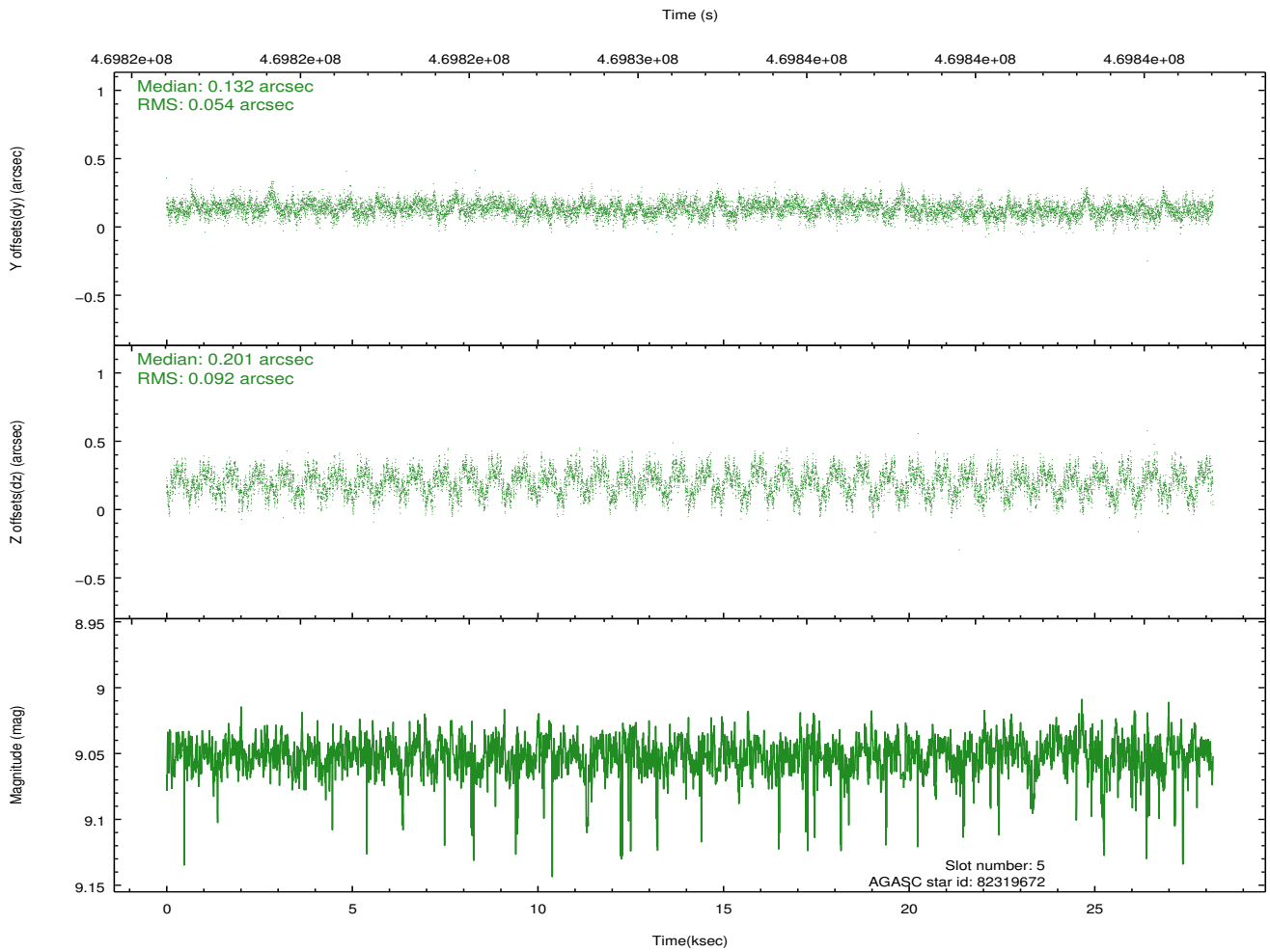
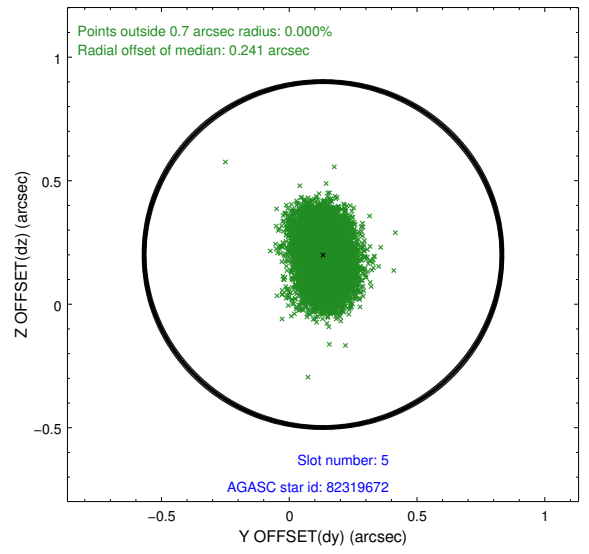
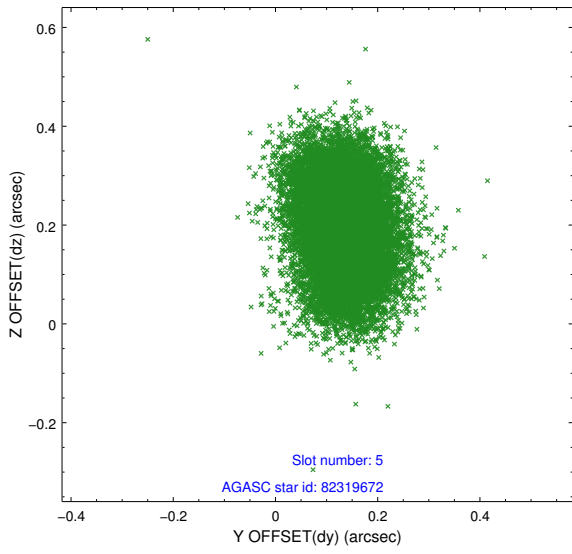
2.4.1 Slot 3



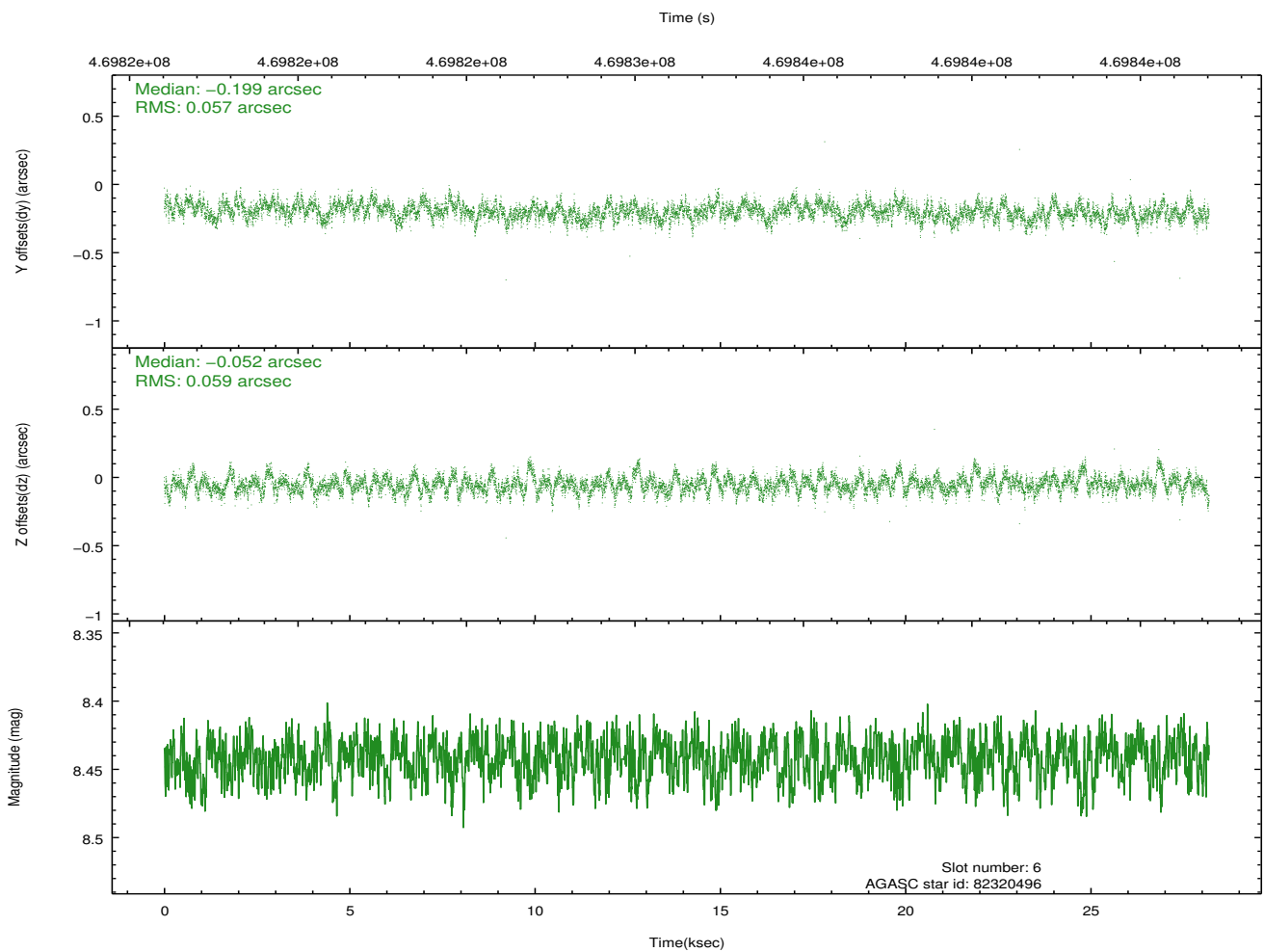
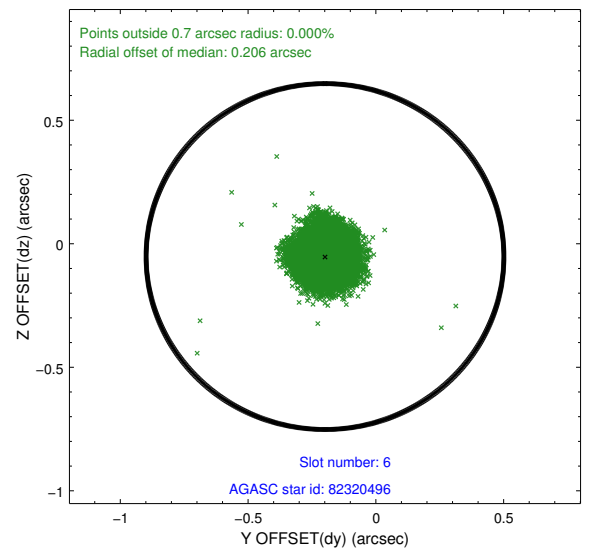
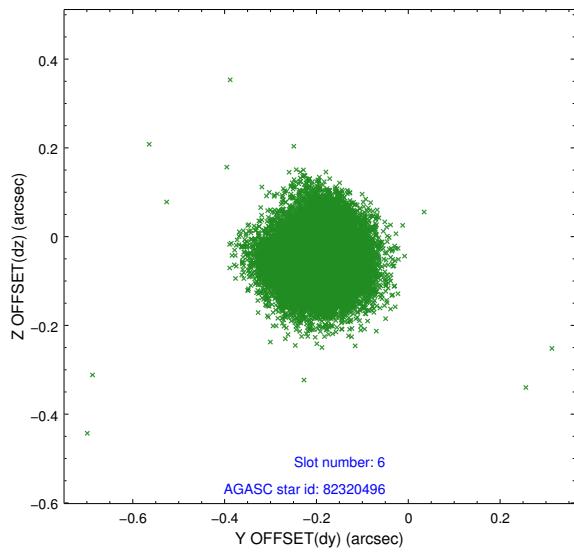
2.4.2 Slot 4



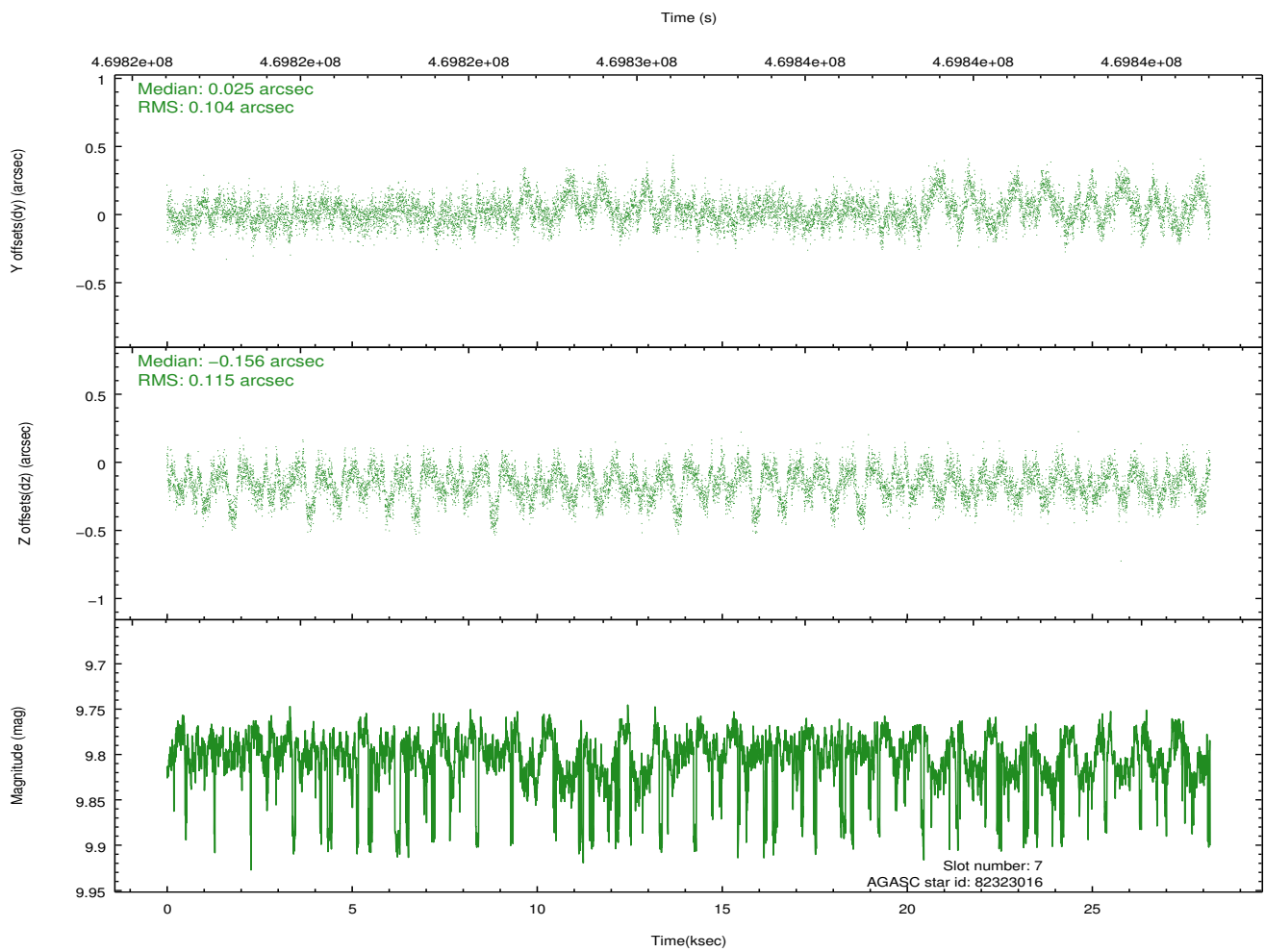
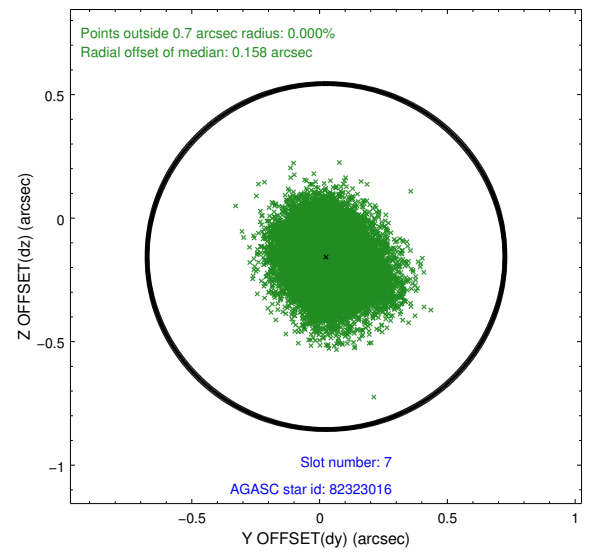
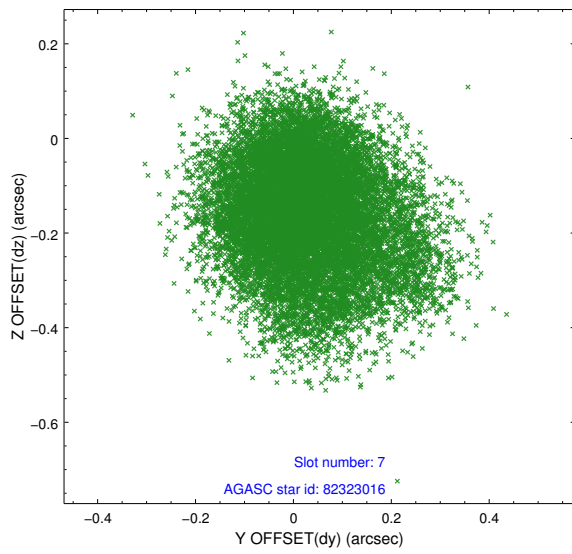
2.4.3 Slot 5



2.4.4 Slot 6

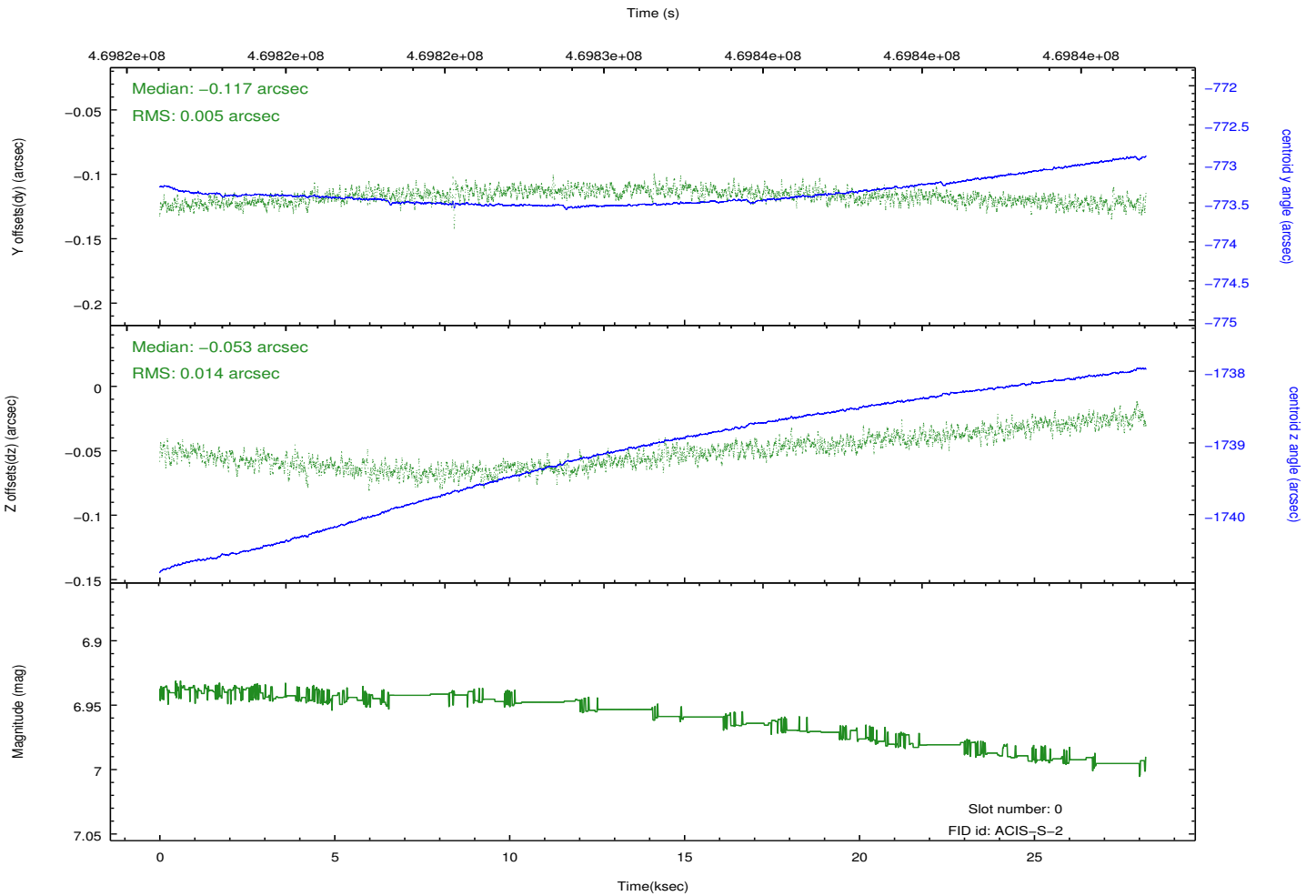
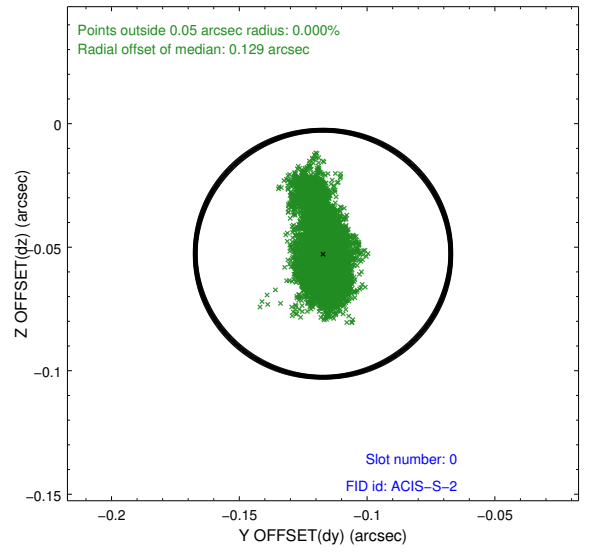
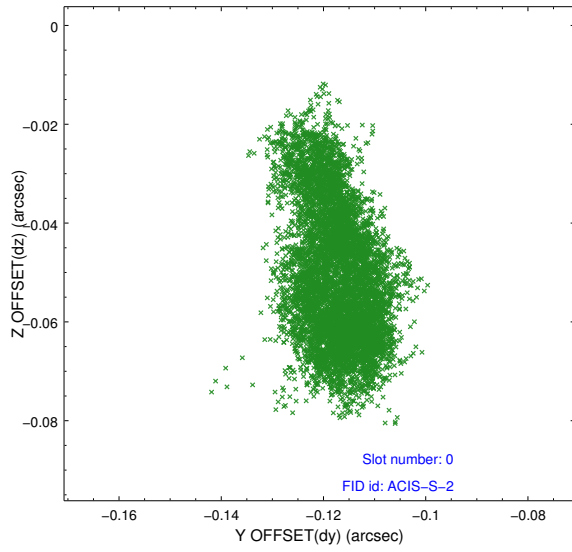


2.4.5 Slot 7

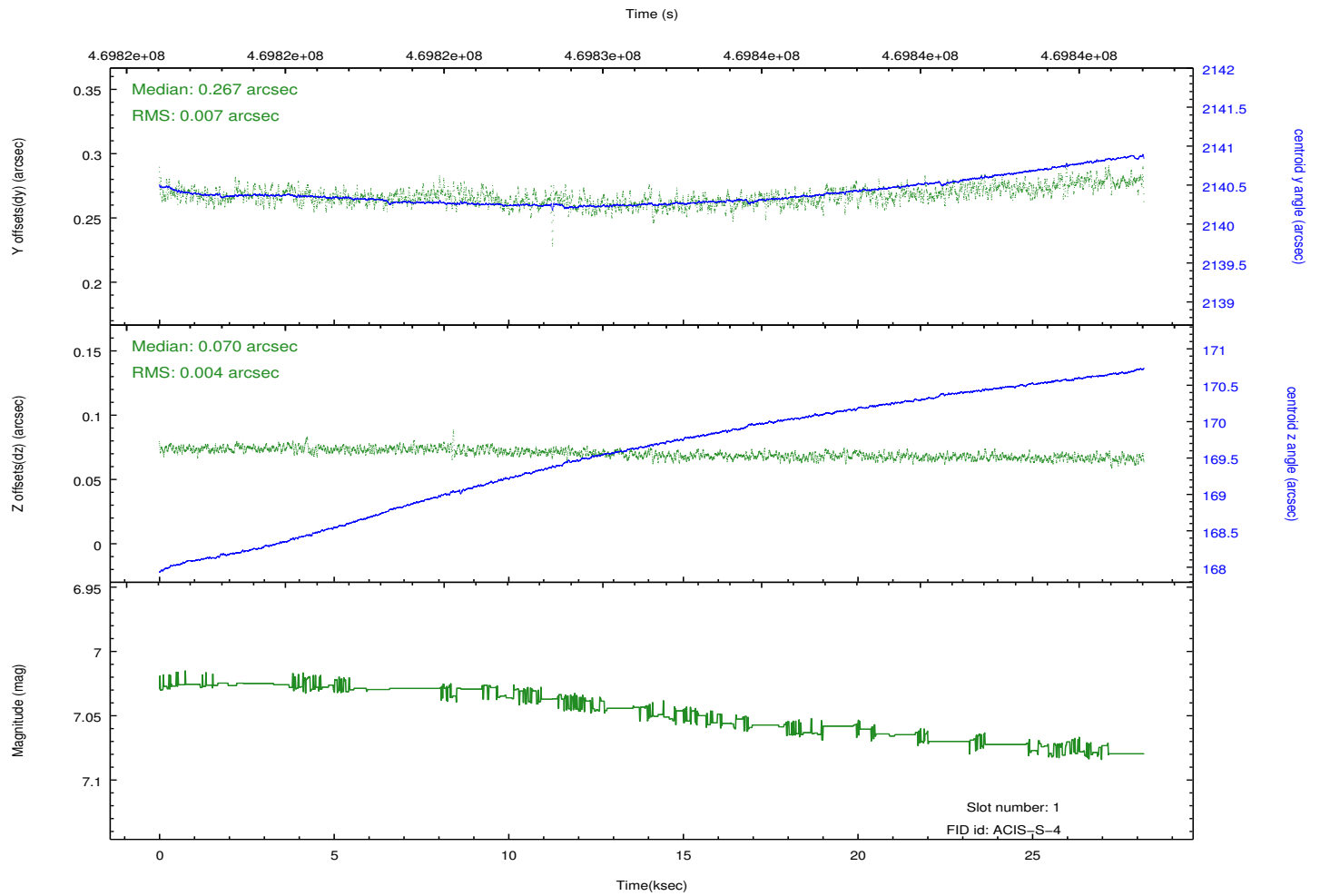
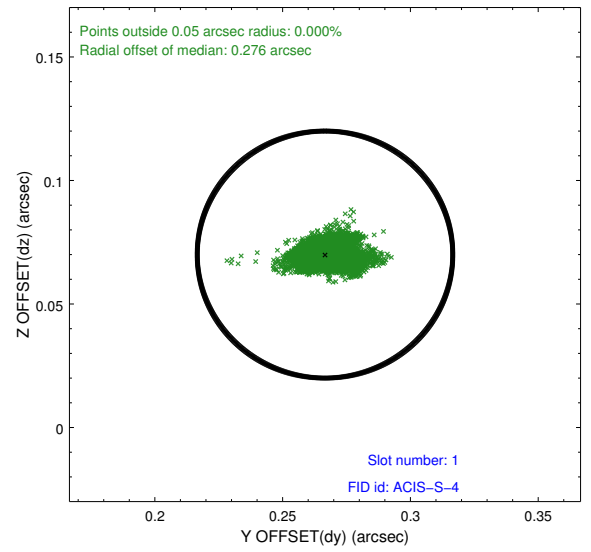
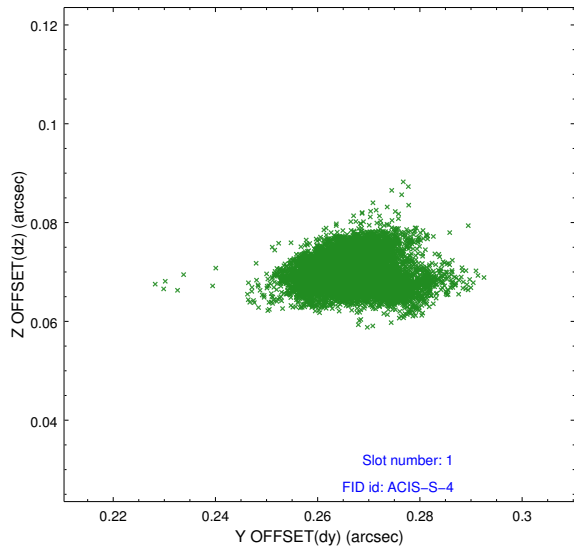


2.5 FID Slots

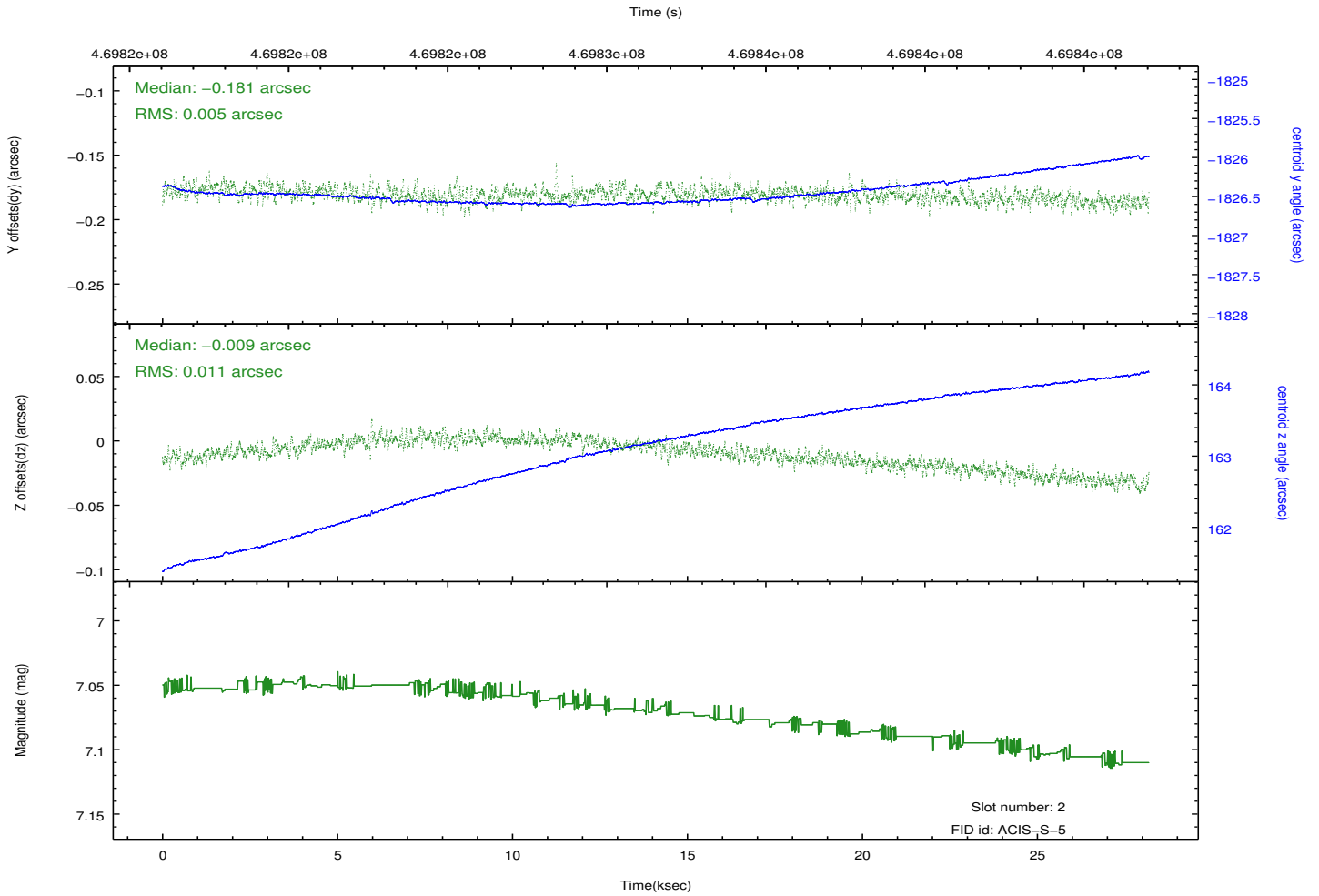
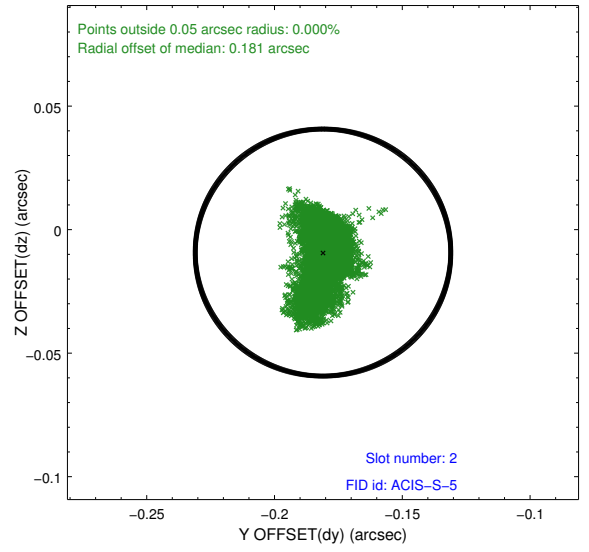
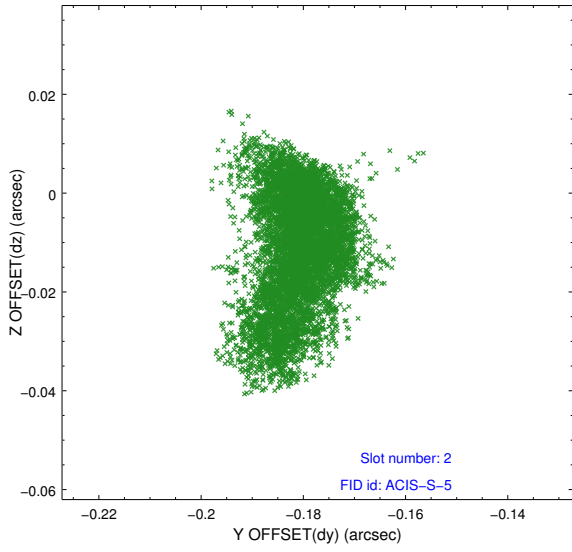
2.5.1 Slot 0



2.5.2 Slot 1



2.5.3 Slot 2



A Summary

A.1 Status

V&V Scientist	Jen Lauer
V&V Date (YYYY-MM-DD)	2014.12.03
V&V Edition	1
V&V Disposition and Status	OK
V&V Charge Time	28.061200215816

A.2 Comments

These data have been reprocessed with new aspect alignment calibration files that correct small mean offsets (up to 0.4 arcsecs) and improve overall astrometric accuracy. The new calibration was determined using data from the time period being reprocessed and was performed using cross-correlation of X-ray sources with radio and optical counterparts.