

V&V Reference Report

L2 ASCDS Version : 8.4.5

Observation 1587 - L2 Version 3
Chandra X-Ray Center

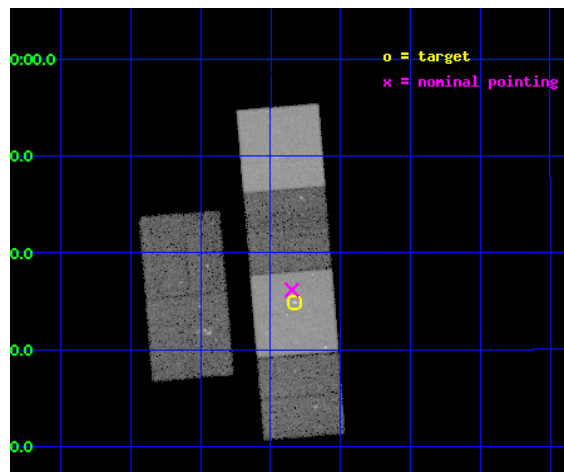
L2 Processing Date : Sep 16 2012

Contents

1	Front	2
2	OBI	3
2.1	OBI	3
2.1.1	Images	3
2.1.2	Bias	3
2.1.3	Parameters	4
2.1.4	Events	4
2.2	Compared Parameters	5
2.3	Aspect	6
2.4	Star Slots	9
2.4.1	Slot 3	9
2.4.2	Slot 4	10
2.4.3	Slot 5	11
2.4.4	Slot 6	12
2.4.5	Slot 7	13
2.5	FID Slots	14
2.5.1	Slot 0	14
2.5.2	Slot 1	15
2.5.3	Slot 2	16
A	Summary	17
A.1	Status	17
A.2	Comments	17

1 Front

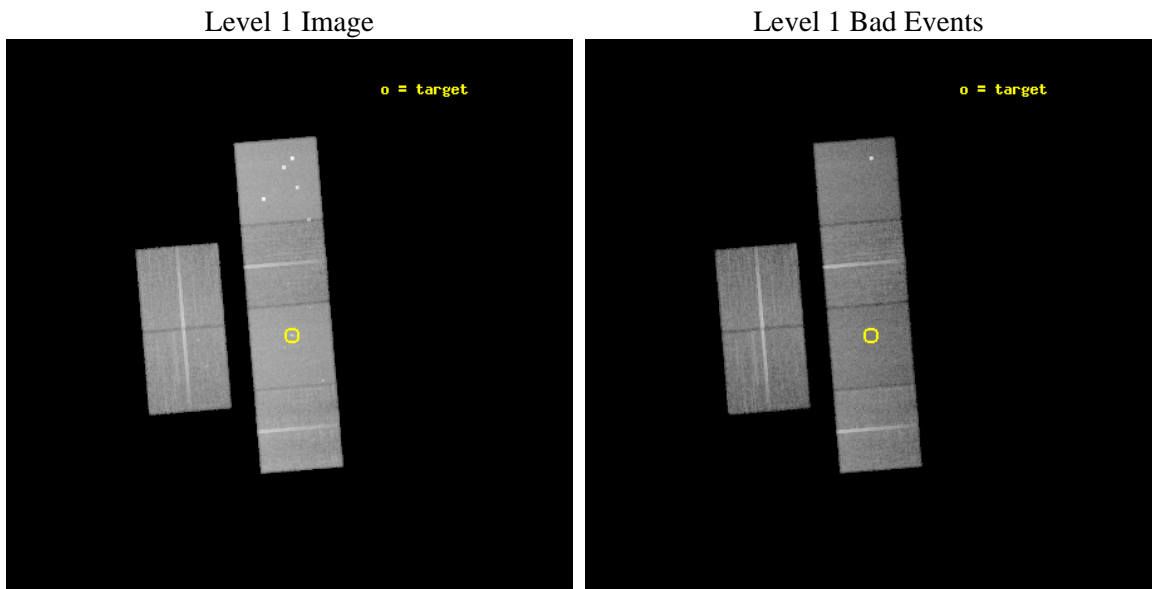
seq_num	600144	Sequence number
obs_id	1587	Observation id
title	CHANDRA OBSERVATIONS OF THE ELLIPTICAL GALAXY NGC3379	Proposal tit
observer	Dr. Stephen Murray	Principal investigator
object	NGC3379	Source name
dtcycle	0	
cycle	P	events from which exps? Prim/Second/Both
ra_targ	161.958333	Observer's specified target RA [deg]
dec_targ	12.5825	Observer's specified target Dec [deg]
ra_nom	161.96193925144	Nominal RA [deg]
dec_nom	12.603098584976	Nominal Dec [deg]
roll_nom	85.229340621573	Nominal Roll [deg]
revision	3	Processing version of data
ontime	31922.453274086	Sum of GTIs [s]
livetime	31518.231949336	Livetime [s]
ontime2	31916.012393519	Sum of GTIs [s]
ontime3	31919.08920376	Sum of GTIs [s]
ontime5	31922.412234083	Sum of GTIs [s]
ontime6	31919.130193934	Sum of GTIs [s]
ontime7	31922.453274086	Sum of GTIs [s]
ontime8	31919.048163757	Sum of GTIs [s]
l2events	300545	Number of level 2 events



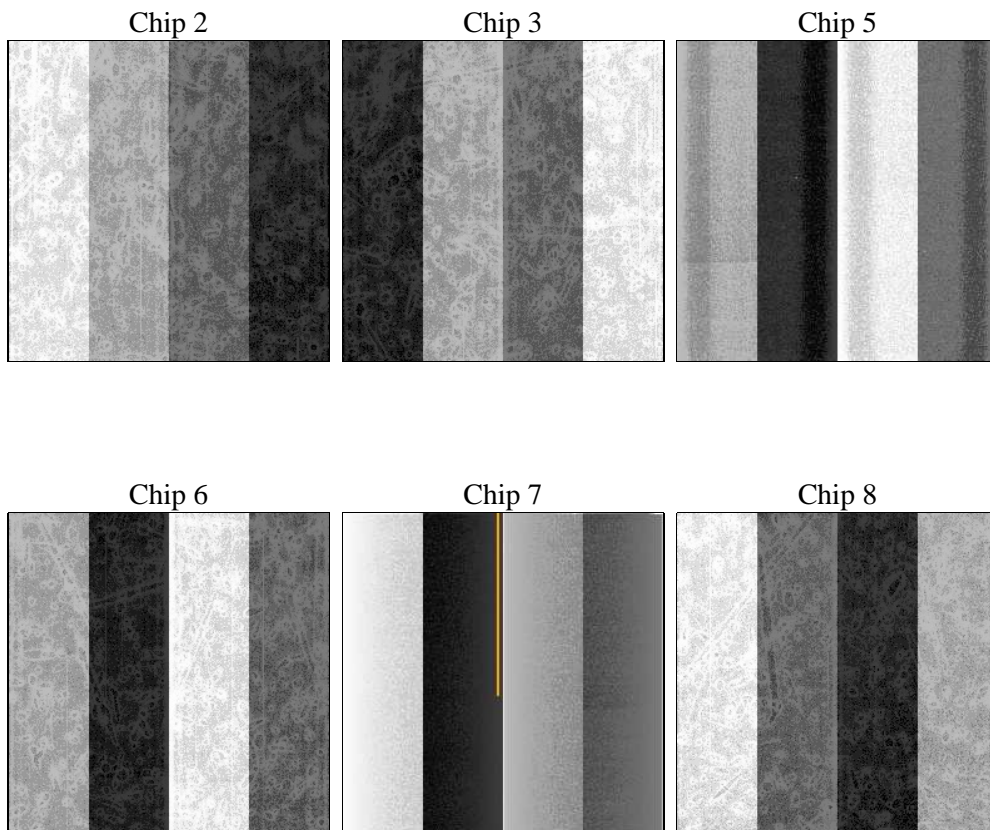
2 OBI

2.1 OBI

2.1.1 Images



2.1.2 Bias



2.1.3 Parameters

obi_num	0	Obi number	sched_exp_time	32000.000000	[s] Scheduled observation exposure time
ascdsver	8.4.5	Processing system revision	ontime	31922.453274086	Sum of GTIs [s]
caldbver	4.5.1.1	 	ontime2	31916.012393519	Sum of GTIs [s]
date	2012-09-16T04:58:21	Date and time of file creation	ontime3	31919.08920376	Sum of GTIs [s]
revision	3	Processing version of data	ontime5	31922.412234083	Sum of GTIs [s]
			ontime6	31919.130193934	Sum of GTIs [s]
			ontime7	31922.453274086	Sum of GTIs [s]
			ontime8	31919.048163757	Sum of GTIs [s]
			l1events	1372703	Number of level 1 events

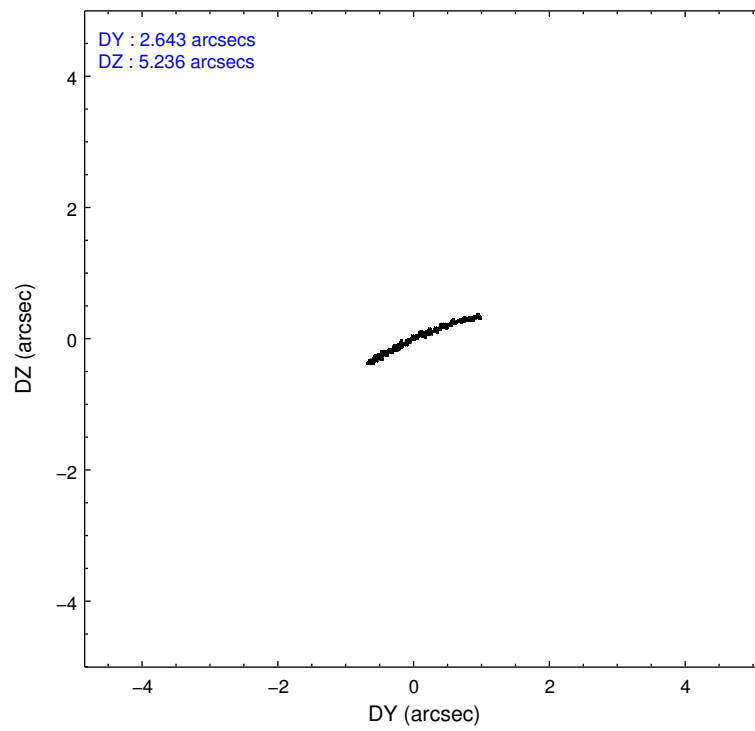
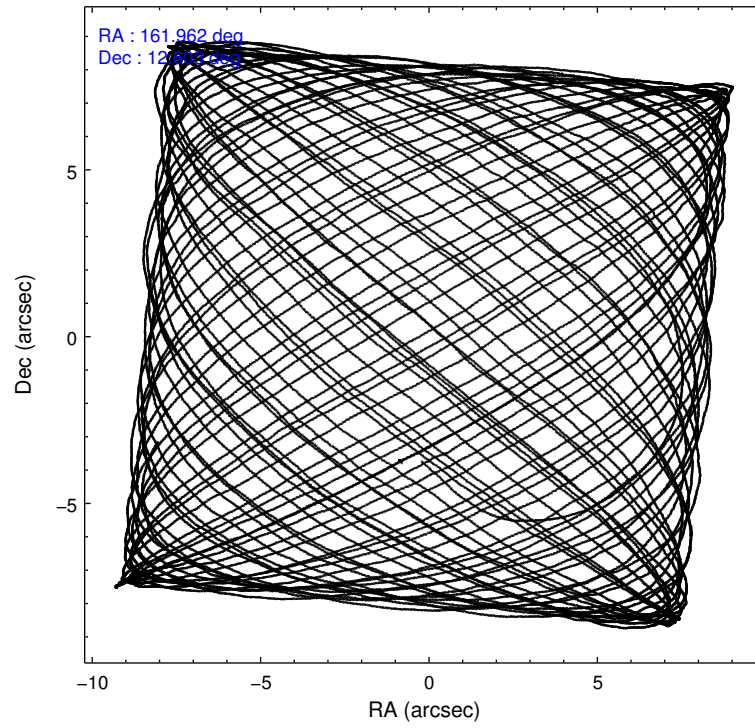
2.1.4 Events

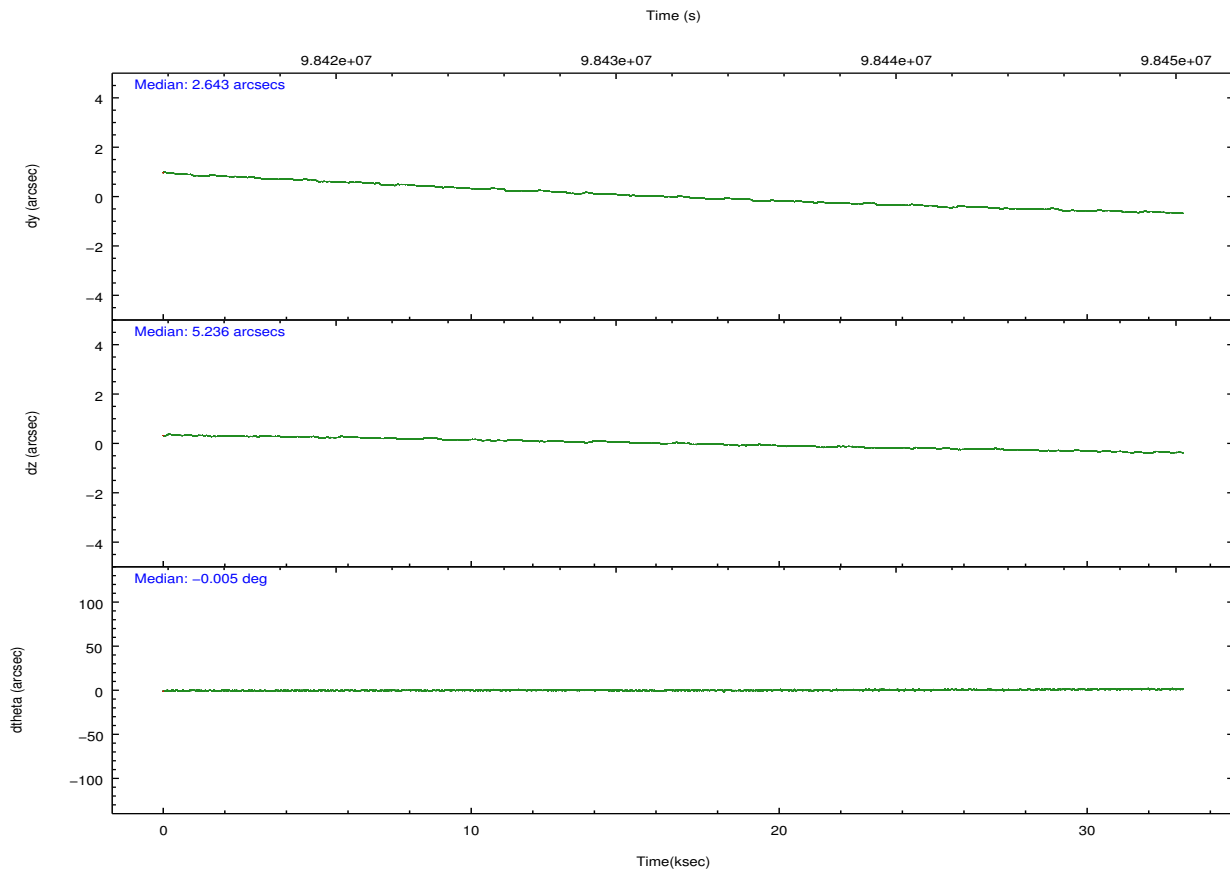
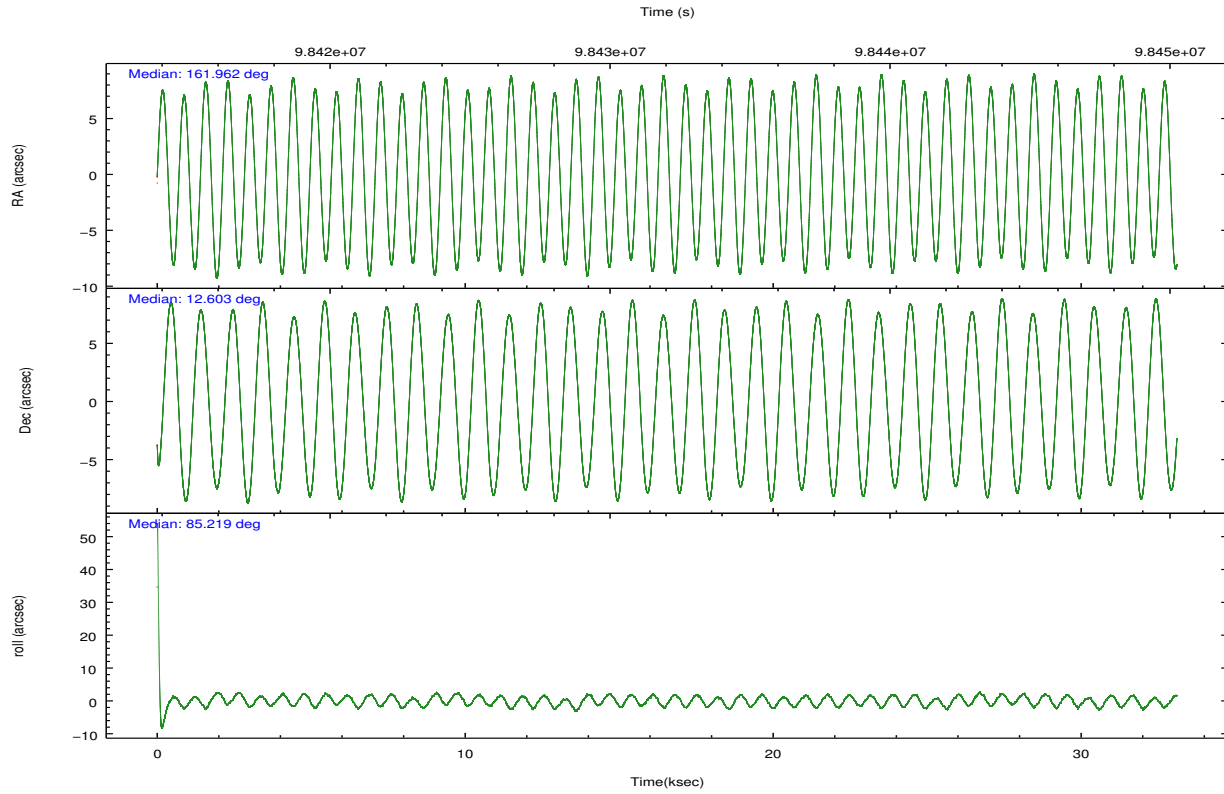
	ccd 2	ccd 3	ccd 5	ccd 6	ccd 7	ccd 8		ccd 2	ccd 3	ccd 5	ccd 6	ccd 7	ccd 8
level 1 events	201089	190095	293868	195575	252997	239079	grade 0 events	9079	10051	28574	8834	11467	15182
rejected events	179246	167307	150844	173579	144752	191654		4%	5%	9%	4%	4%	6%
rejected %	89%	88%	51%	88%	57%	80%	grade 1 events	75	90	287	77	230	137
								0%	0%	0%	0%	0%	0%
							grade 2 events	4743	4482	39522	4486	21451	10092
								2%	2%	13%	2%	8%	4%
							grade 3 events	2084	2144	5293	2250	9963	5200
								1%	1%	1%	1%	3%	2%
							grade 4 events	2034	2157	5063	2198	9743	4848
								1%	1%	1%	1%	3%	2%
							grade 5 events	6781	7275	21885	8023	23836	10044
								3%	3%	7%	4%	9%	4%
							grade 6 events	3904	3957	64588	4229	55634	12108
								1%	2%	21%	2%	21%	5%
							grade 7 events	172389	159939	128656	165478	120673	181468
								85%	84%	43%	84%	47%	75%

2.2 Compared Parameters

Parameter	Planned	Actual	Parameter	Planned	Actual
Instrument	ACIS	ACIS	Obspar format version number	7	7
Detector	ACIS-235678	ACIS-235678	Obspar file type	PREDICTED	ACTUAL
Grating	NONE	NONE	Obspar update status	NONE	UPDATED
Data mode	FAINT	FAINT	Number of optional ACIS chips dropped	0	0
Observation mode	POINTING	POINTING	On-chip summing requested	N	N
[deg] Pointing RA	161.974093	161.9619392514375	Subarray requested	NONE	NONE
[deg] Pointing Dec	12.578496	12.60309858497601	Alternating exposures requested	N	N
[deg] Pointing Roll	85.070040	85.22934062157329	[s] Primary exposure time	0.000000	3.2
[mm] SIM focus pos	-0.684267	-0.6828225247311905			
[mm] SIM defocus	0	0.001444936568705701			
[mm] SIM translation stage pos	-190.132523	-190.1400660498719			
[mm] SIM translation stage offset	0	0.00754346686406393			
[s] Observation start time (MET)	98416590.184000	98415171.881807			
Observation start date	2001-02-13T01:55:26	2001-02-13T01:32:51			
[s] Observation end time (MET)	98448590.184000	98449352.55812401			
Observation end date	2001-02-13T10:48:46	2001-02-13T11:02:32			
Read mode	TIMED	TIMED			

2.3 Aspect



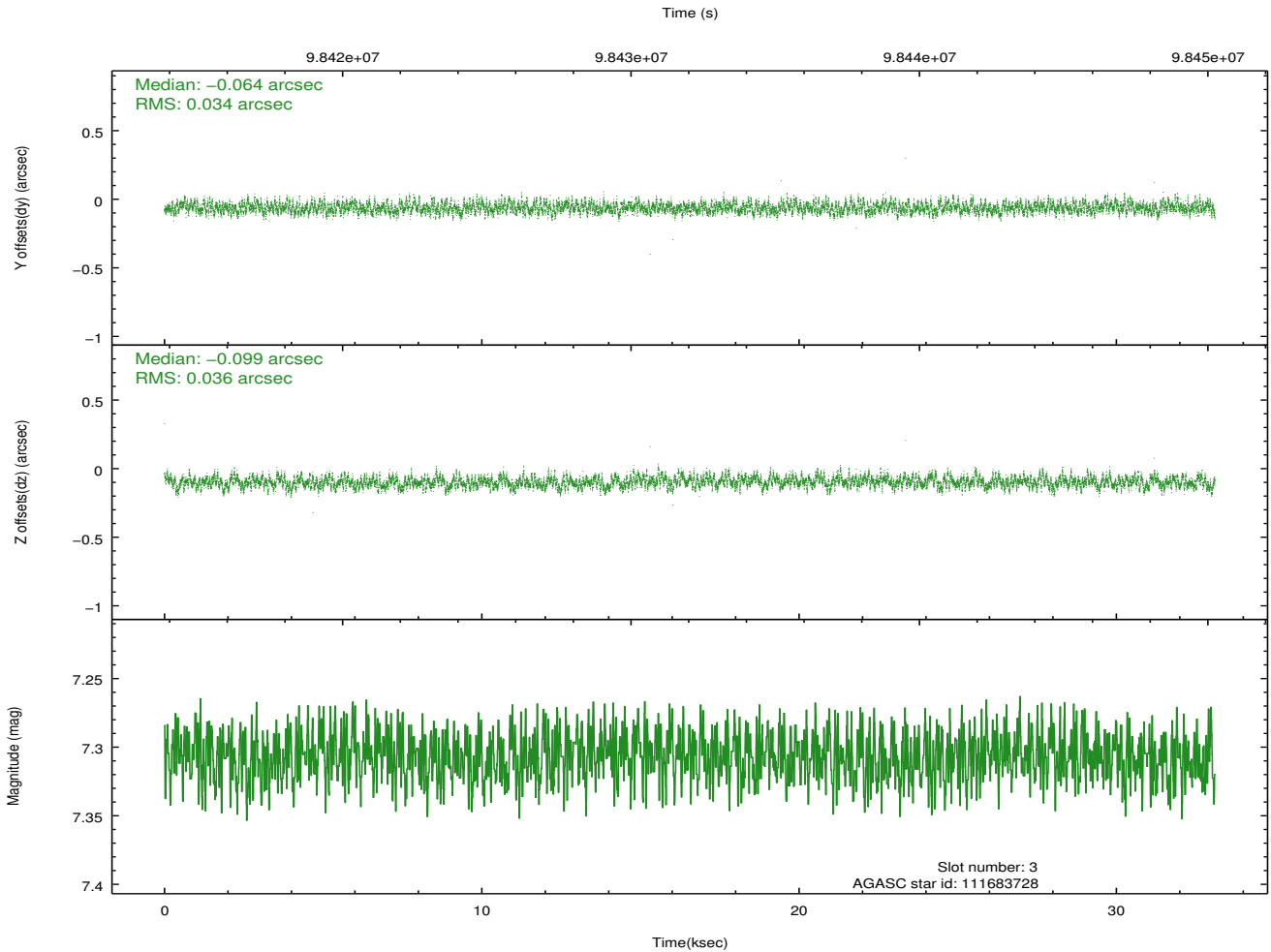
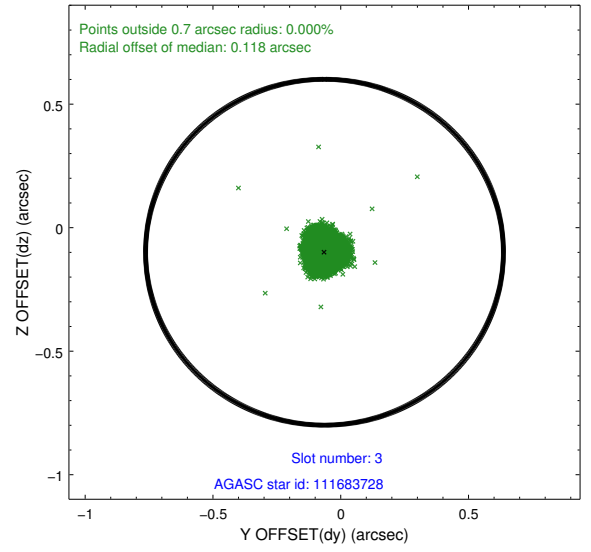
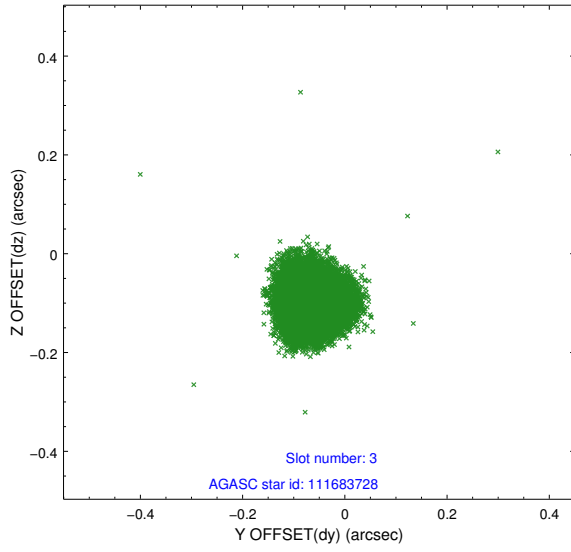


Slot Statistics

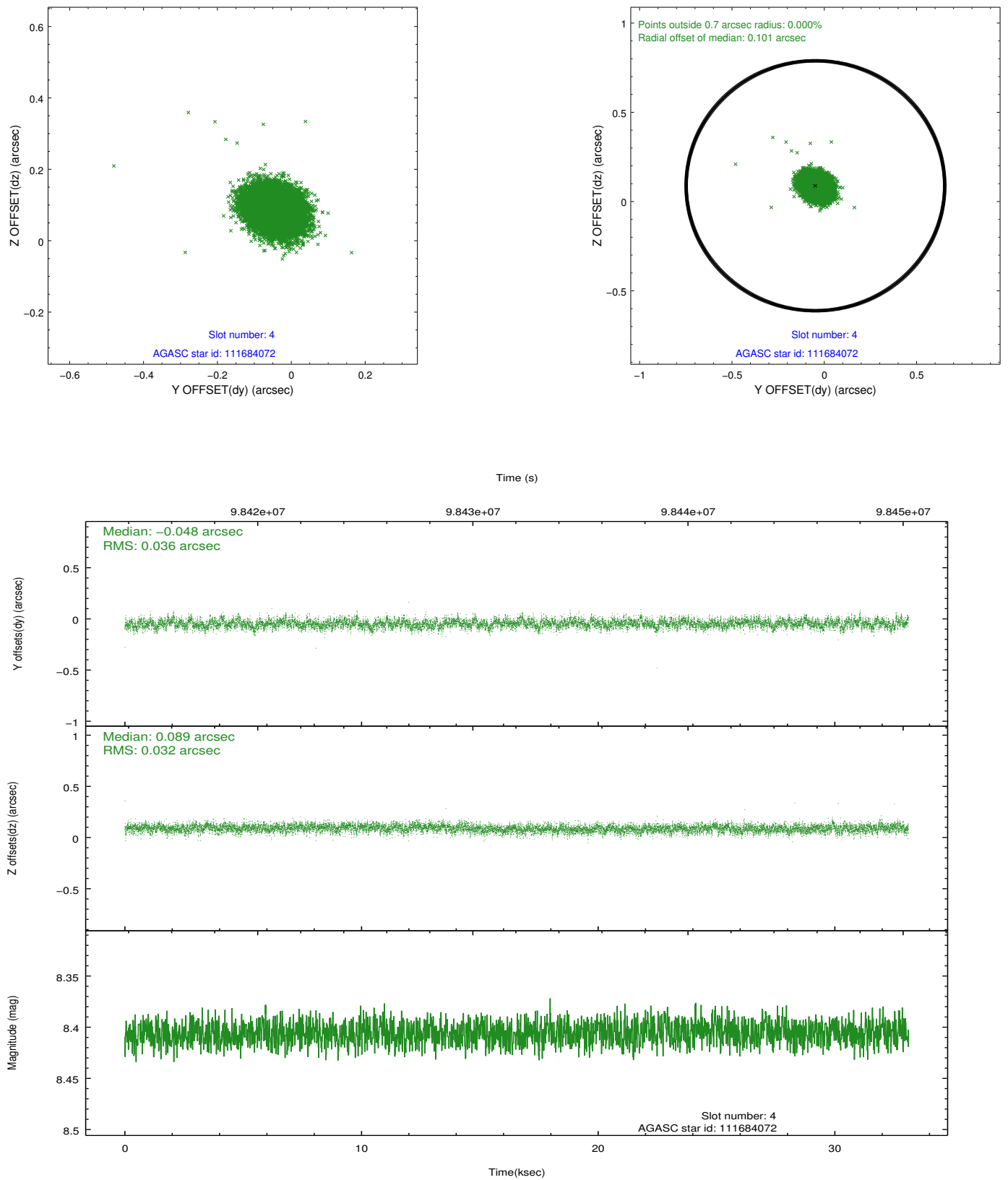
slot	status	id	mag	n_pts	med_dy	med_dz	dr1	dr2	ra	dec	mean_y	mean_z
0	FID	ACIS-S-2	7.12	8074	-0.032	-0.003	0.010	0.016	0.000000	0.000000	-755.31	-1726.36
1	FID	ACIS-S-4	7.20	8076	-0.024	0.016	0.012	0.020	0.000000	0.000000	2157.91	182.15
2	FID	ACIS-S-5	7.24	8077	0.025	-0.004	0.011	0.019	0.000000	0.000000	-1808.07	175.77
3	GUIDE	111683728	7.31	16152	-0.064	-0.099	0.053	0.082	161.580479	12.747846	489.00	1430.10
4	GUIDE	111684072	8.41	16149	-0.048	0.089	0.051	0.084	162.537547	12.809514	1000.67	-1897.98
5	GUIDE	111682048	8.85	16141	0.036	-0.024	0.068	0.112	162.332050	12.842718	1056.44	-1169.09
6	GUIDE	111678840	9.41	16142	-0.002	-0.086	0.090	0.143	161.405295	13.145727	1864.68	2163.25
7	GUIDE	111282128	9.70	16137	0.071	0.118	0.108	0.176	162.570224	12.424897	-368.26	-2134.52

2.4 Star Slots

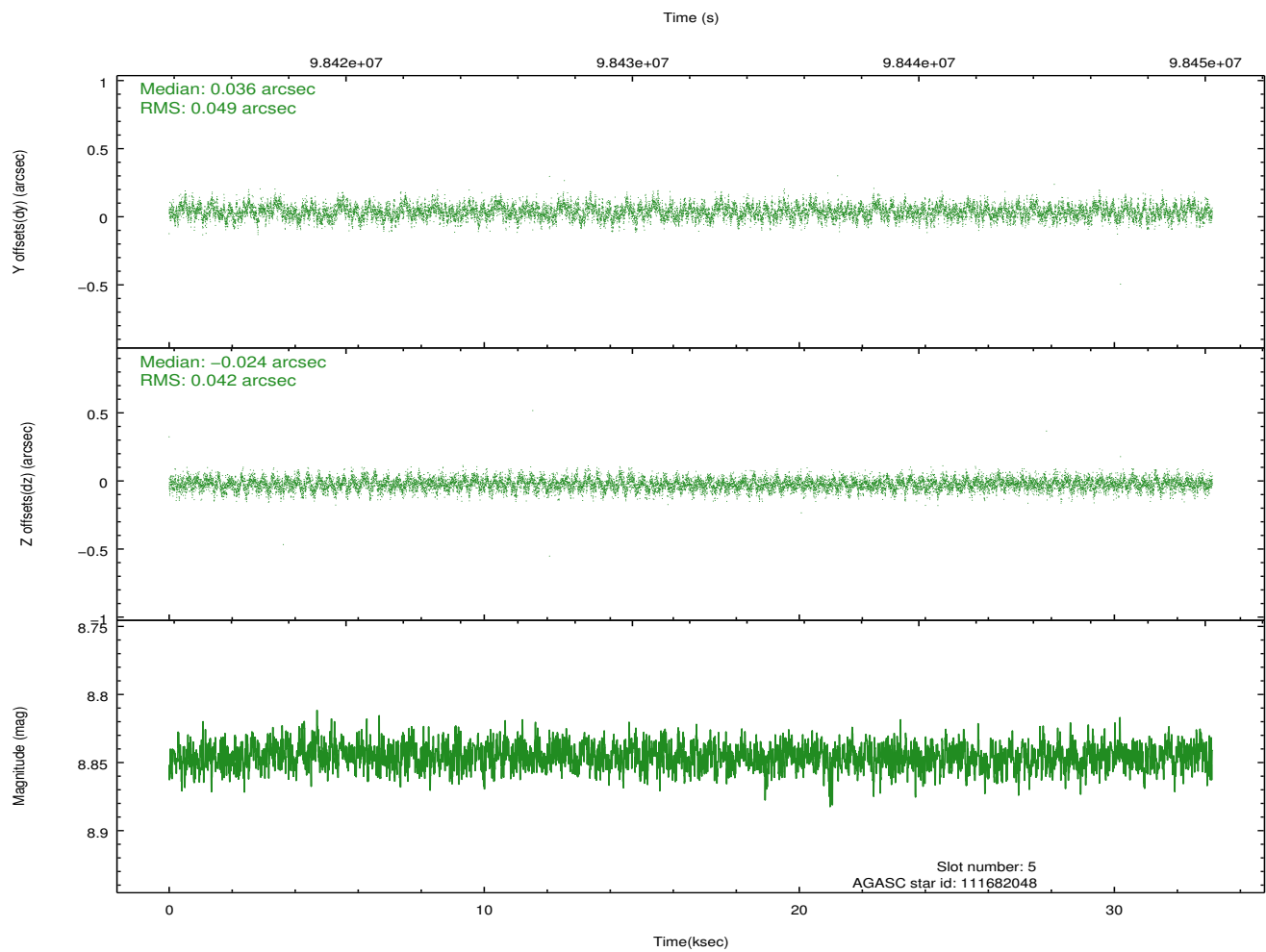
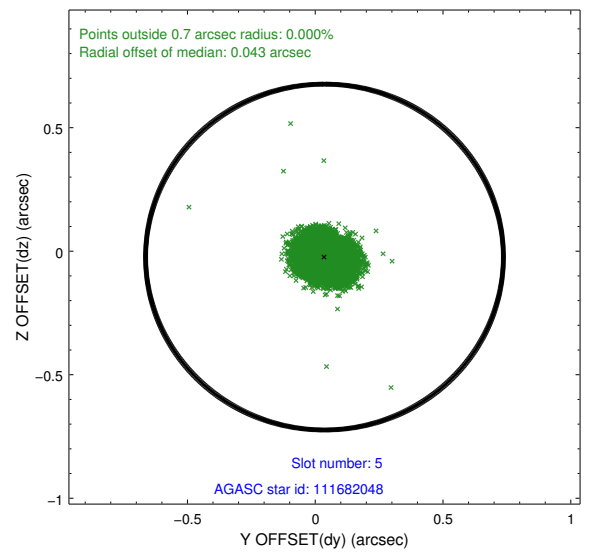
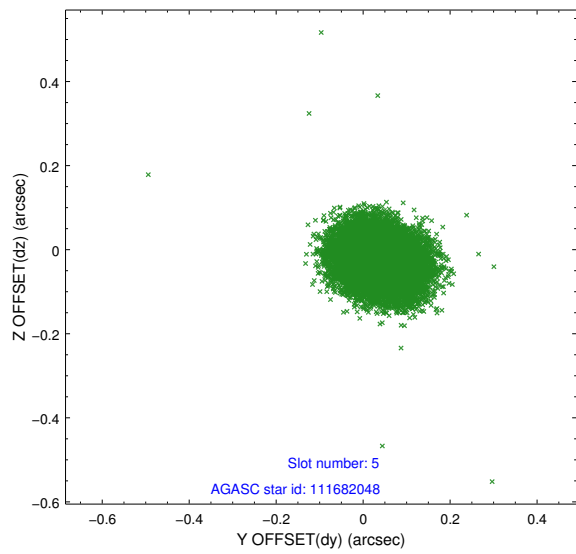
2.4.1 Slot 3



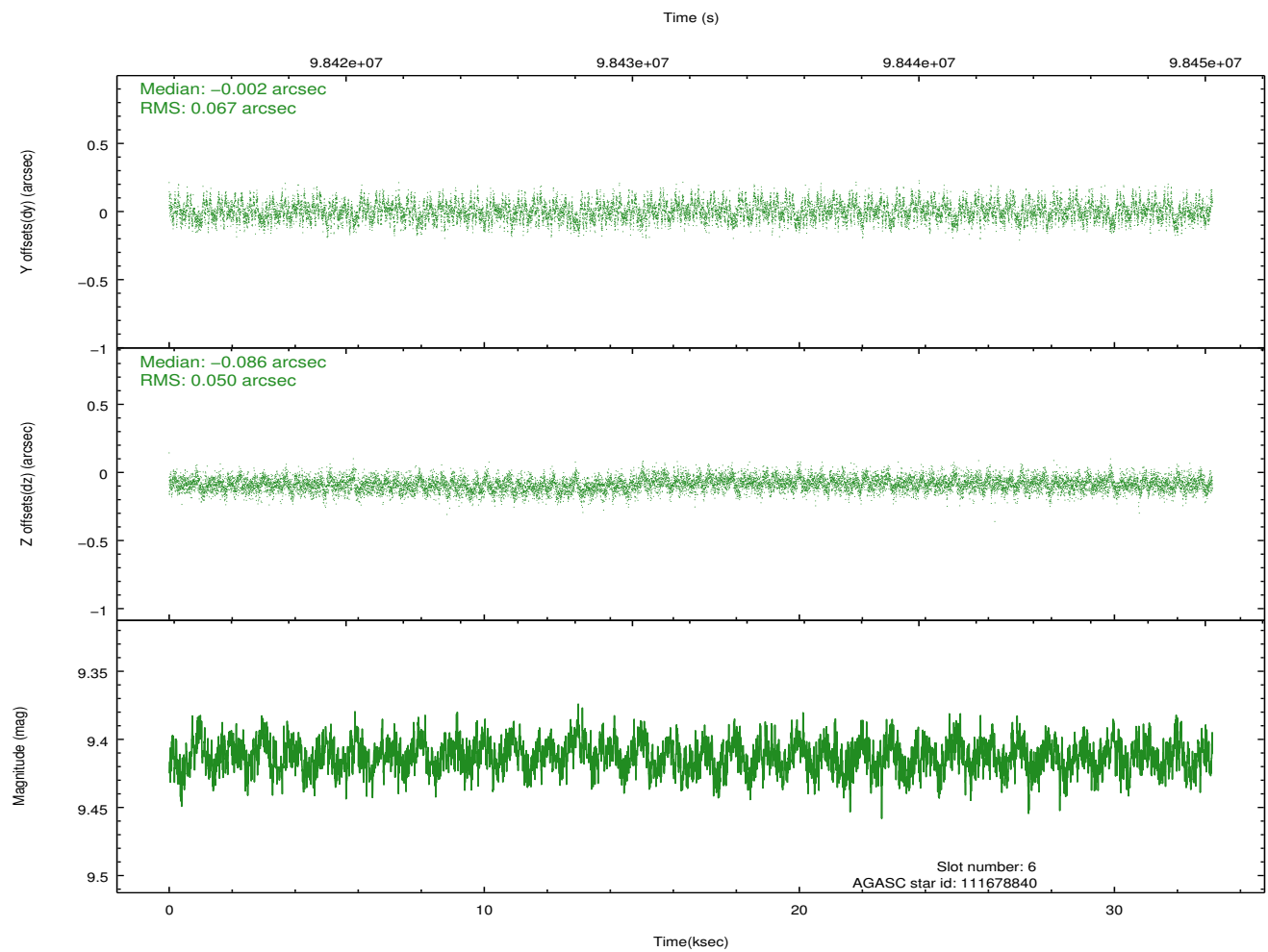
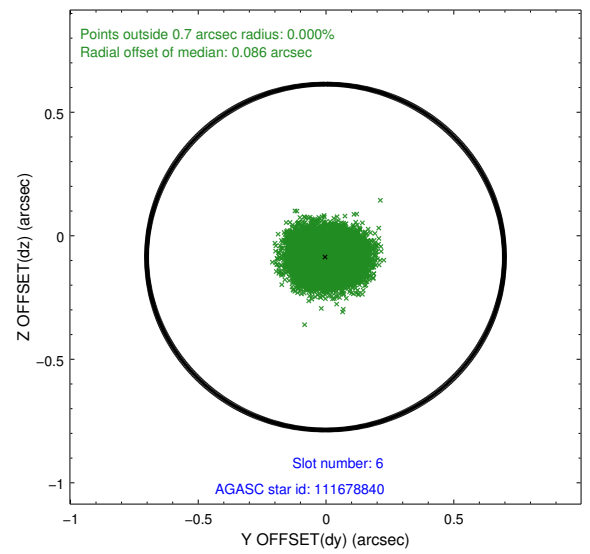
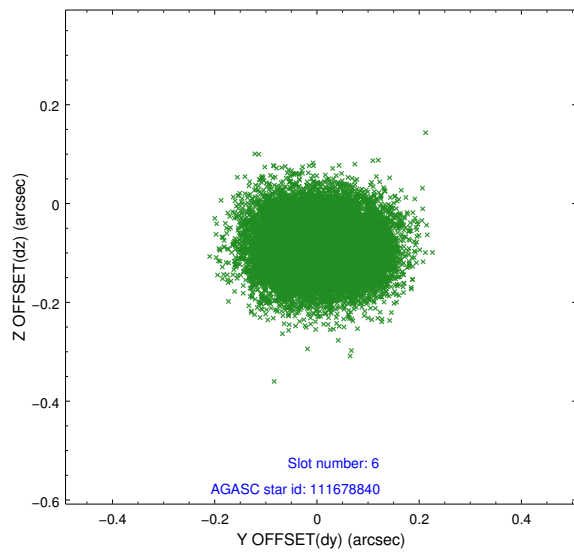
2.4.2 Slot 4



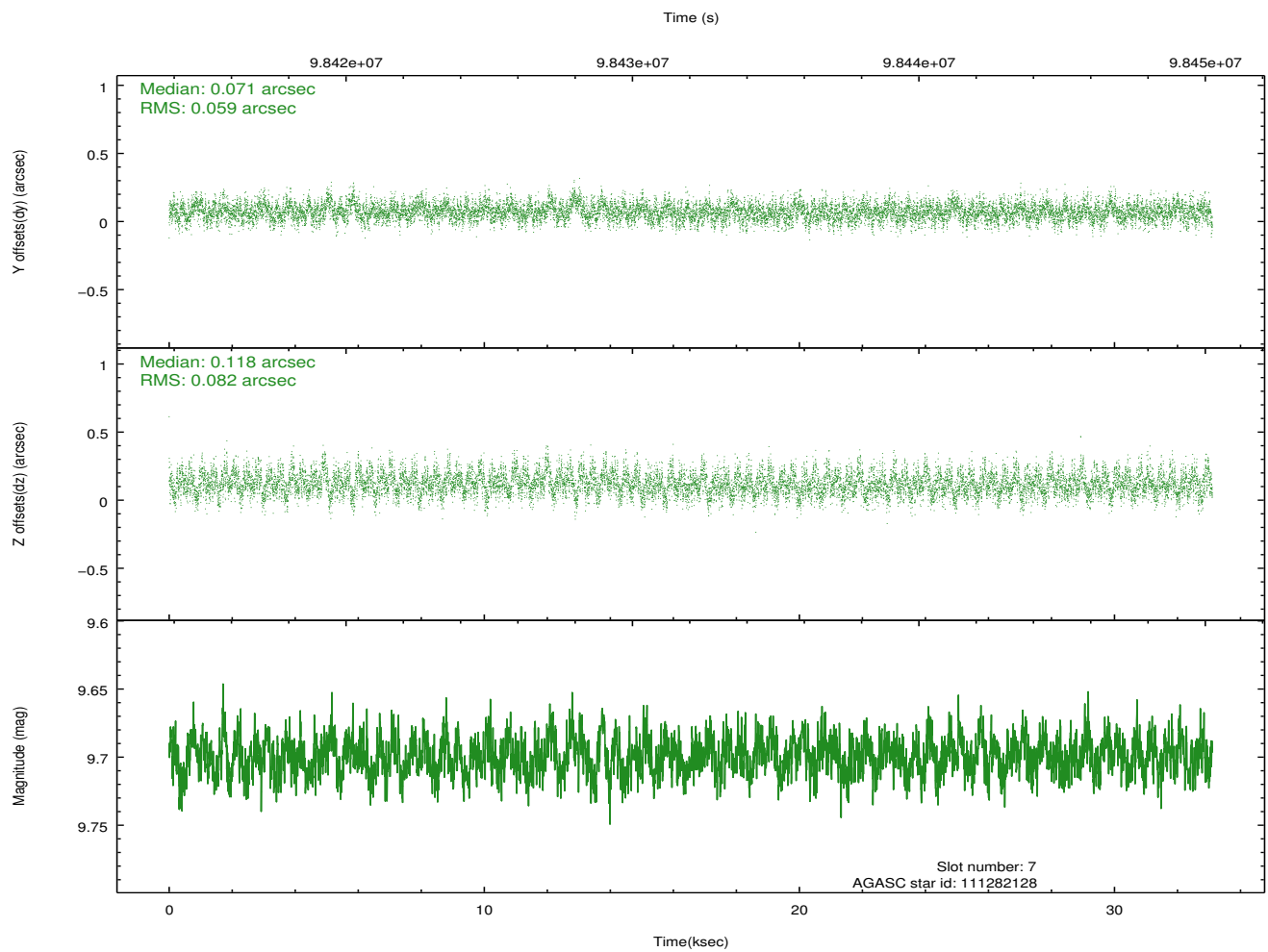
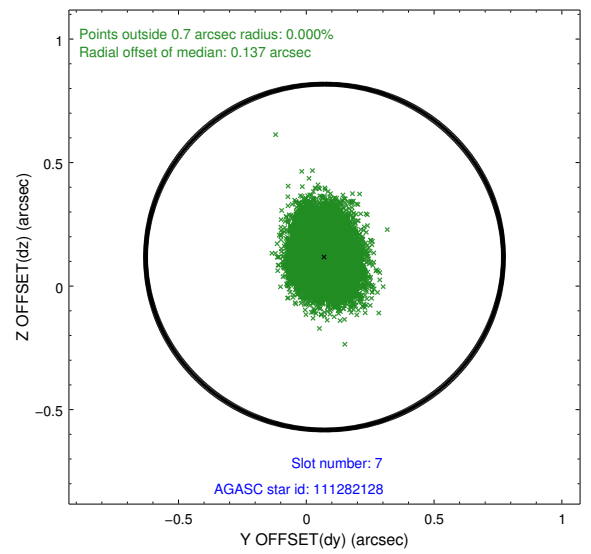
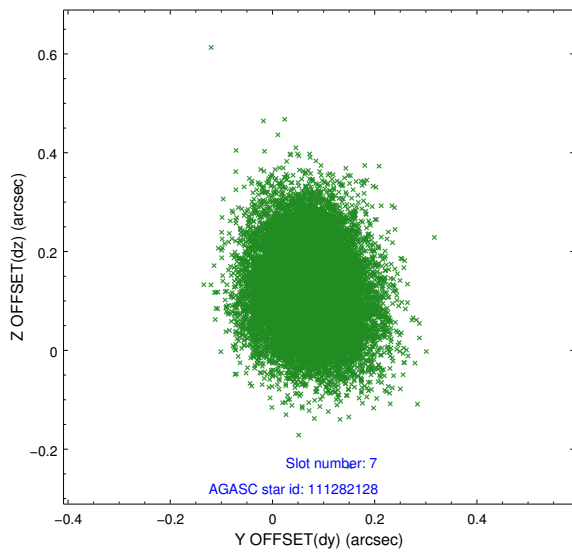
2.4.3 Slot 5



2.4.4 Slot 6

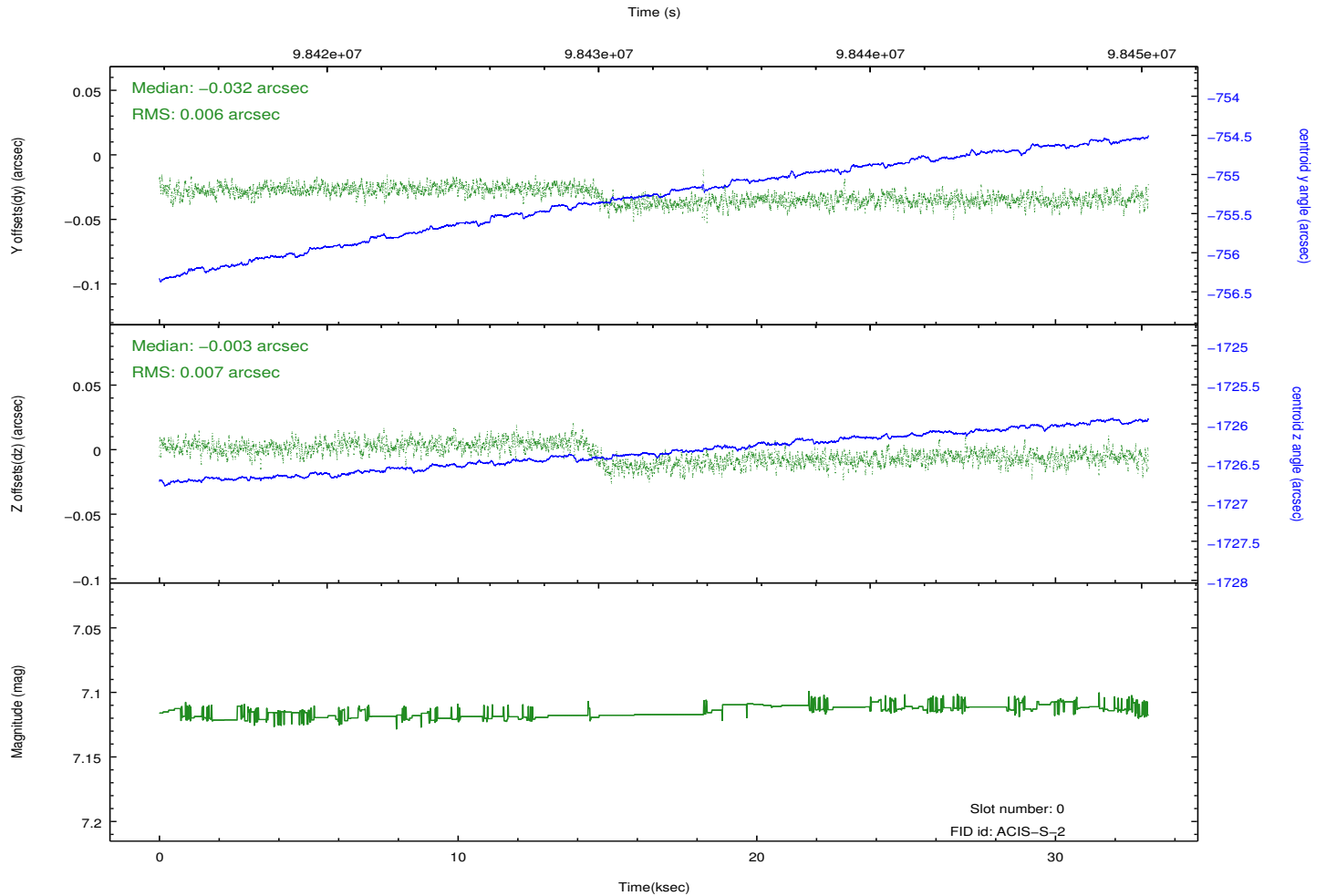
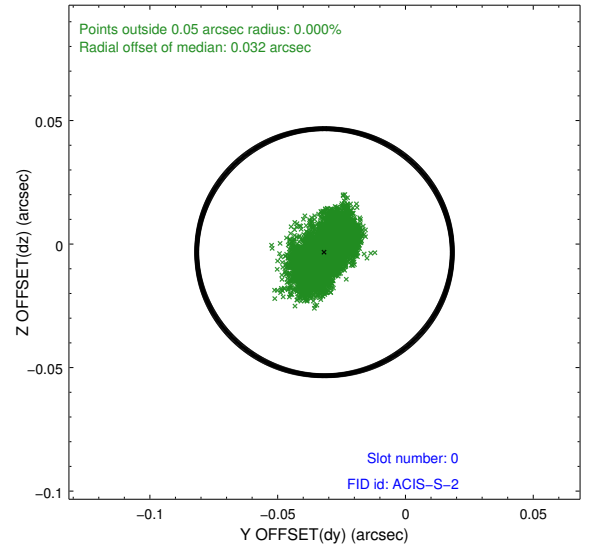
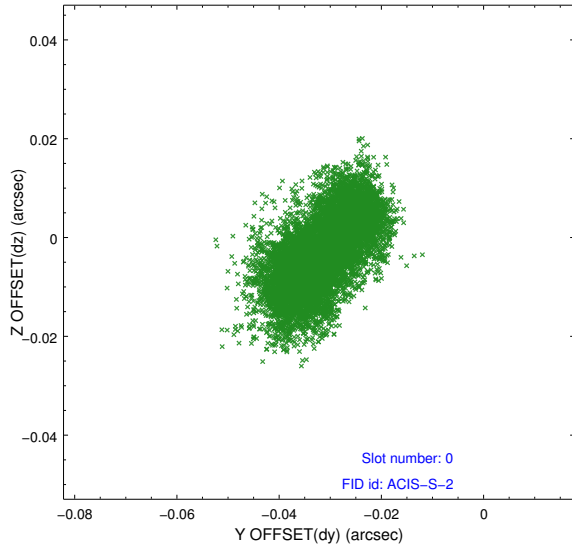


2.4.5 Slot 7

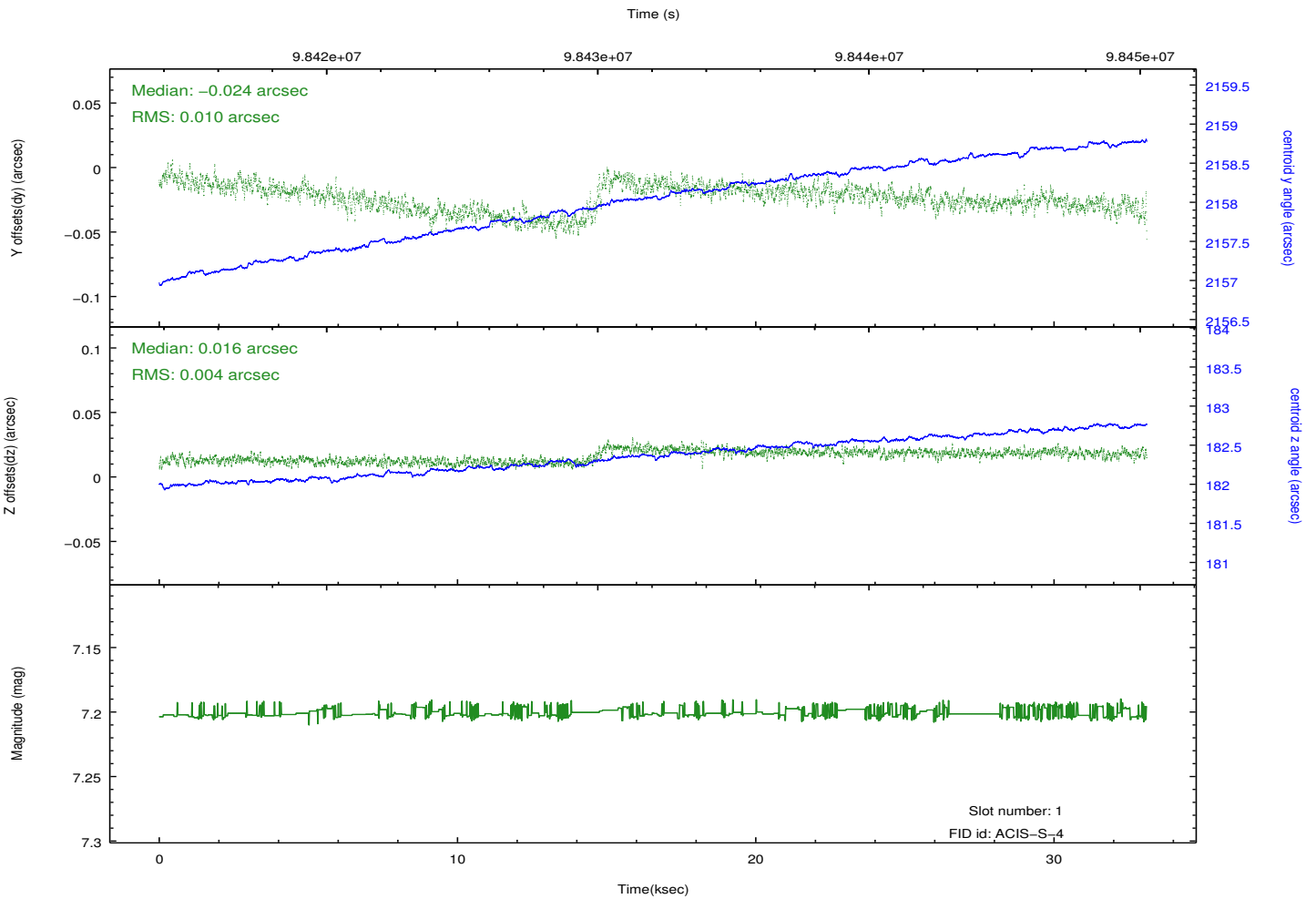
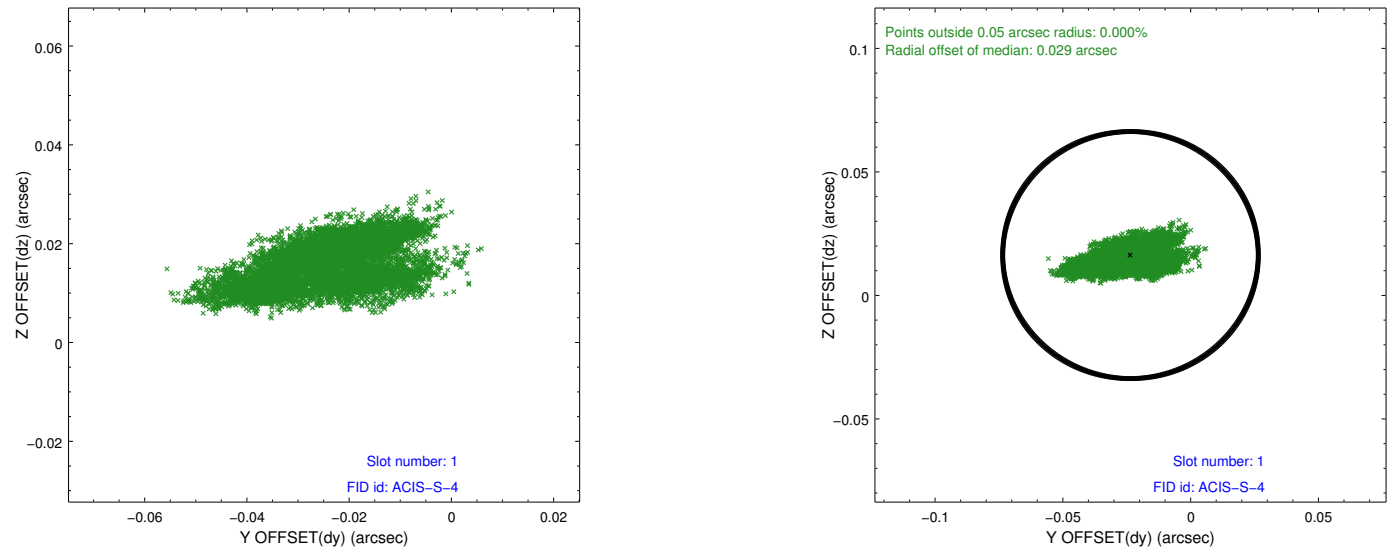


2.5 FID Slots

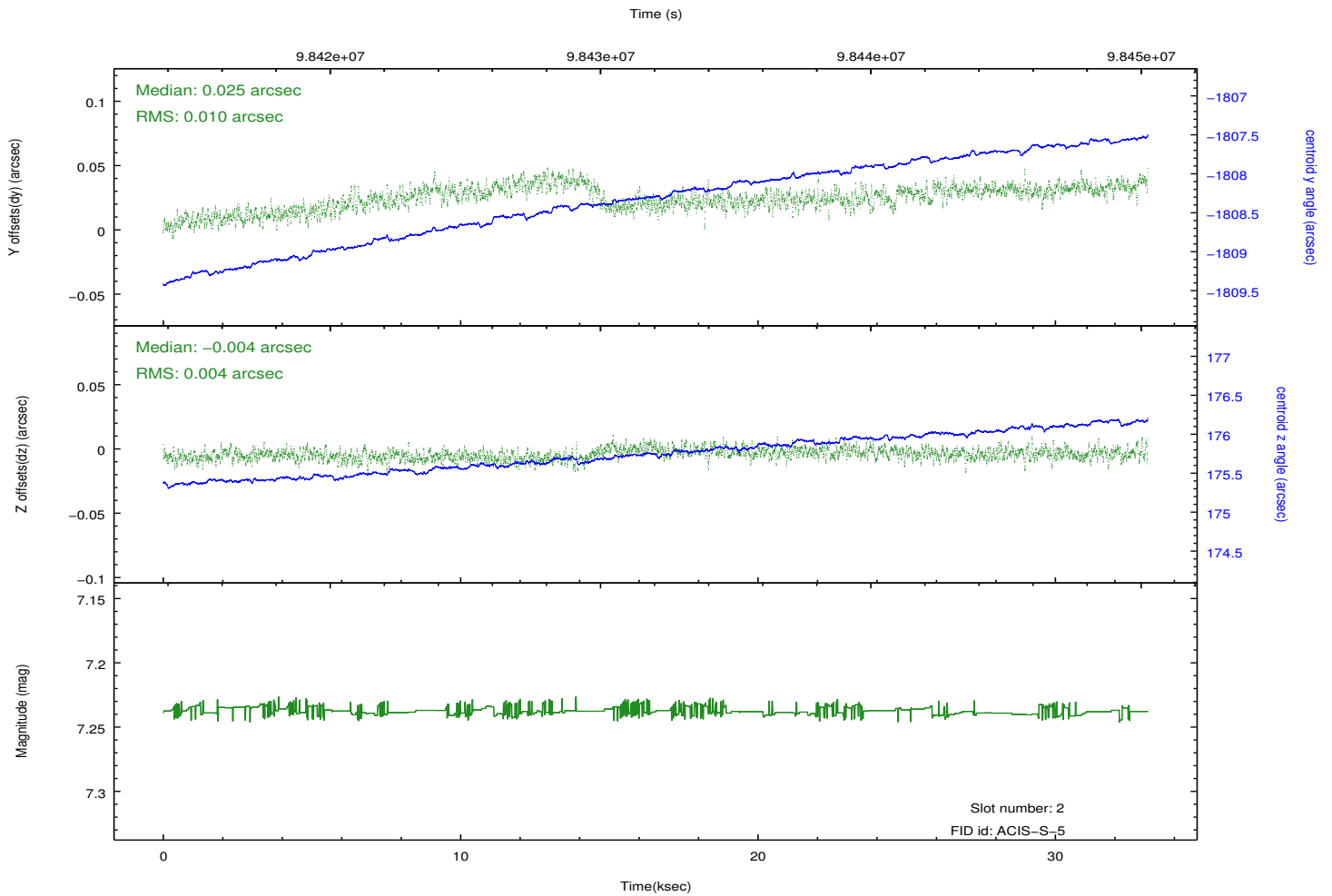
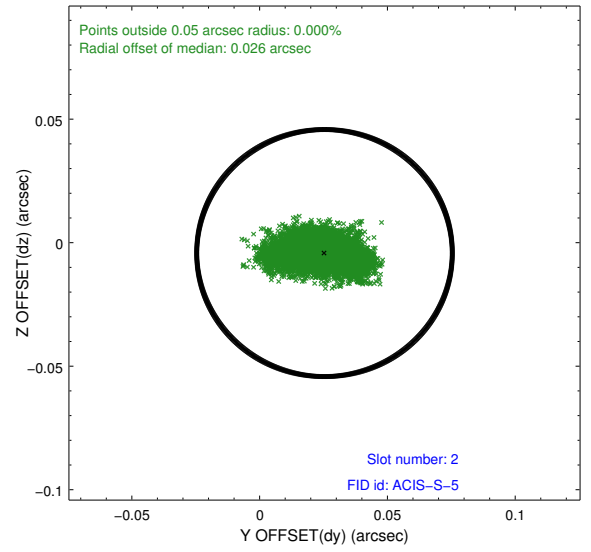
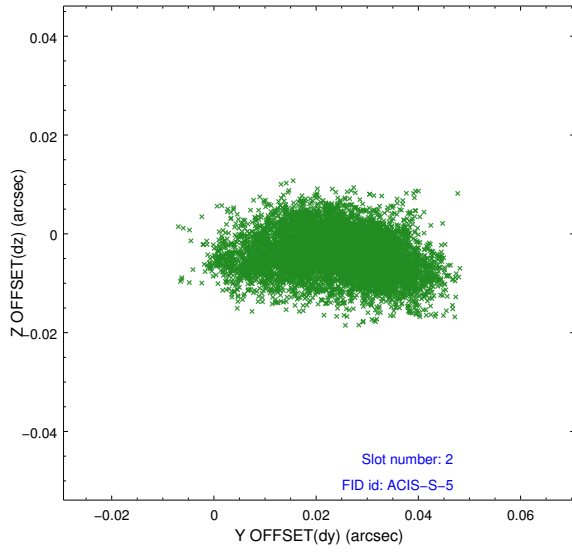
2.5.1 Slot 0



2.5.2 Slot 1



2.5.3 Slot 2



A Summary

A.1 Status

V&V Scientist	Jen Lauer
V&V Date (YYYY-MM-DD)	2012.09.19
V&V Edition	1
V&V Disposition and Status	OK
V&V Charge Time	31.923

A.2 Comments