

V&V Reference Report

L2 ASCDS Version : 10.2.4

Observation 16457 - L2 Version 1
Chandra X-Ray Center

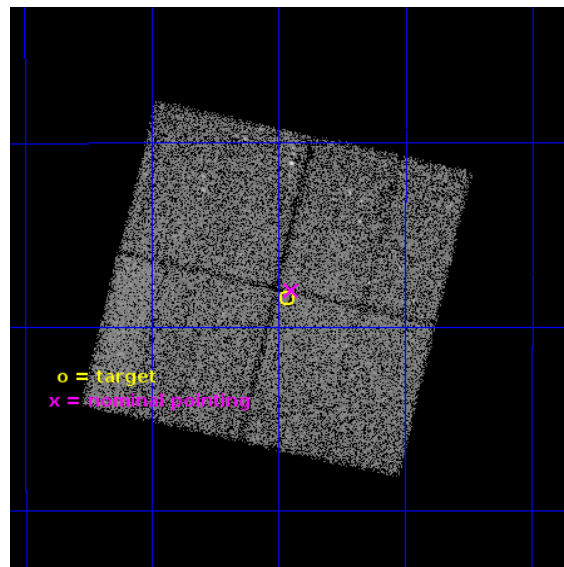
L2 Processing Date : Aug 5 2014

Contents

1	Front	2
2	OBI	3
2.1	OBI	3
2.1.1	Images	3
2.1.2	Bias	3
2.1.3	Parameters	4
2.1.4	Events	4
2.2	Compared Parameters	5
2.3	Aspect	6
2.4	Star Slots	9
2.4.1	Slot 3	9
2.4.2	Slot 4	10
2.4.3	Slot 5	11
2.4.4	Slot 6	12
2.4.5	Slot 7	13
2.5	FID Slots	14
2.5.1	Slot 0	14
2.5.2	Slot 1	15
2.5.3	Slot 2	16
A	Summary	17
A.1	Status	17
A.2	Comments	17

1 Front

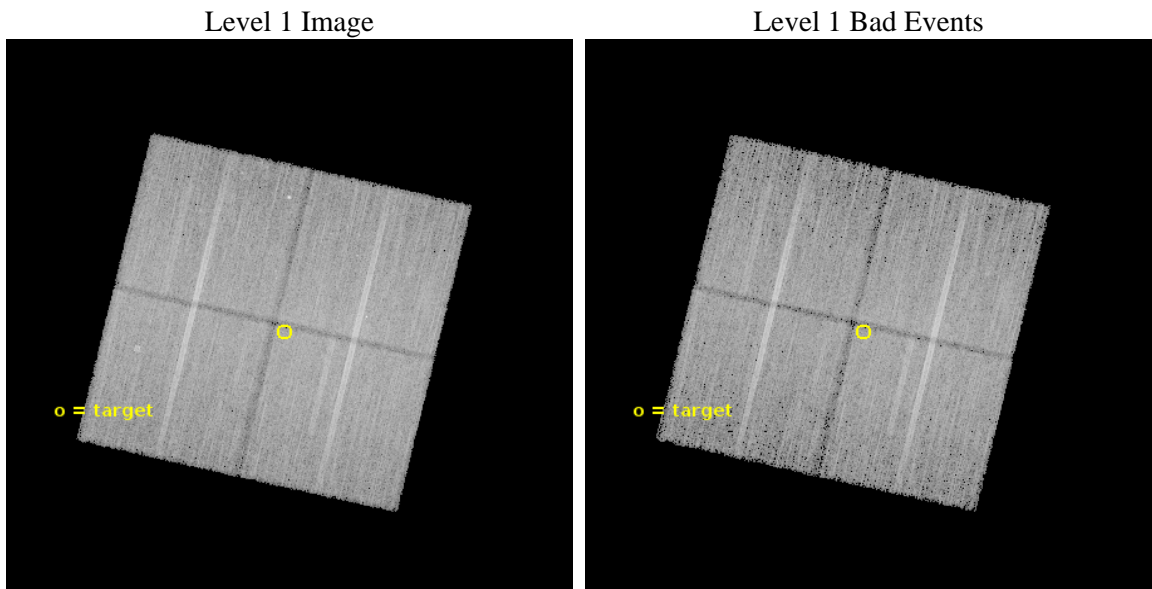
seq_num	901115	Sequence number
obs_id	16457	Observation id
title	The Chandra Deep Field-South: A Peerless Ultradeep Survey for Exploring the Distant X-ray Universe	Proposal title
observer	Prof. W.N. Brandt	Principal investigator
object	Chandra Deep Field-South	Source name
dtcycle	0	
cycle	P	events from which exps? Prim/Second/Both
ra_targ	53.117083	Observer's specified target RA [deg]
dec_targ	-27.807333	Observer's specified target Dec [deg]
ra_nom	53.112374287181	Nominal RA [deg]
dec_nom	-27.800282670101	Nominal Dec [deg]
roll_nom	103.20648246371	Nominal Roll [deg]
revision	1	Processing version of data
ontime	46586.63305068	Sum of GTIs [s]
livetime	45977.944393293	Livetime [s]
ontime0	46586.509910822	Sum of GTIs [s]
ontime1	46592.832871497	Sum of GTIs [s]
ontime2	46592.8739115	Sum of GTIs [s]
ontime3	46586.63305068	Sum of GTIs [s]
l2events	90533	Number of level 2 events



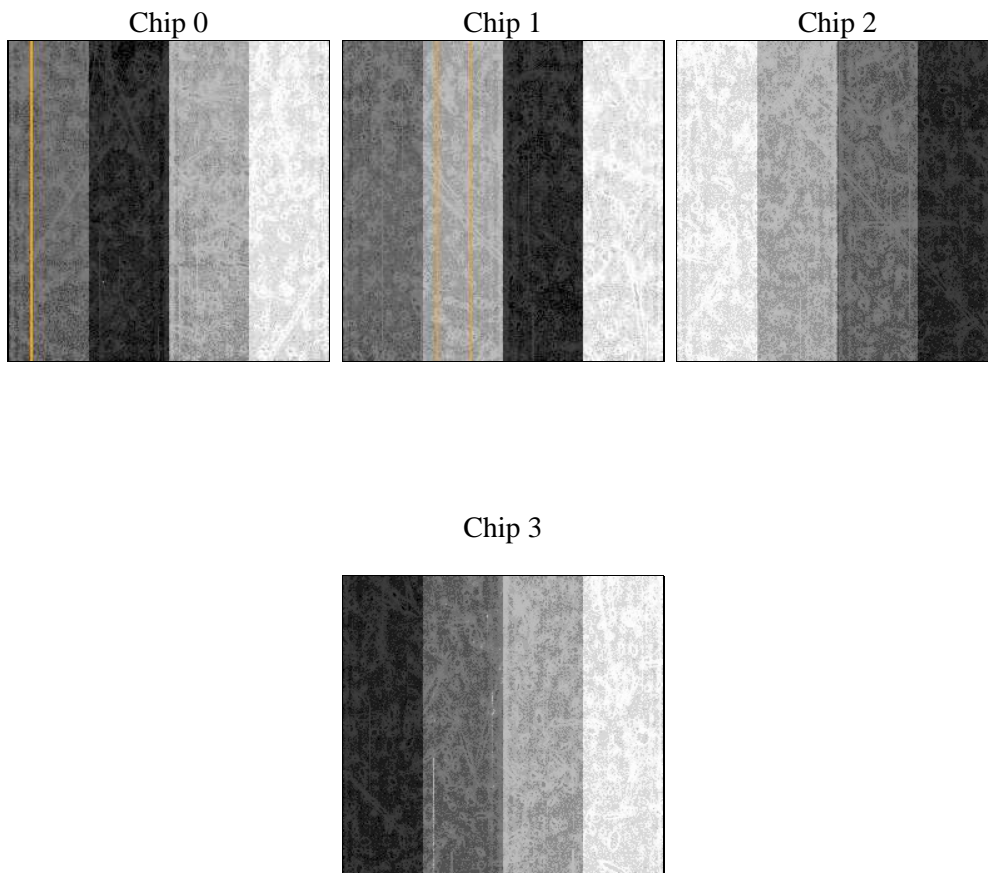
2 OBI

2.1 OBI

2.1.1 Images



2.1.2 Bias



2.1.3 Parameters

obi_num	0	Obi number	sched_exp_time	46500.000000	[s] Scheduled observation exposure time
ascdsver	10.2.4	Processing system revision	ontime	46586.63305068	Sum of GTIs [s]
caldbver	4.6.2	 	ontime0	46586.509910822	Sum of GTIs [s]
date	2014-08-05T23:12:12	Date and time of file creation	ontime1	46592.832871497	Sum of GTIs [s]
revision	1	Processing version of data	ontime2	46592.8739115	Sum of GTIs [s]
			ontime3	46586.63305068	Sum of GTIs [s]
			l1events	860225	Number of level 1 events

2.1.4 Events

	ccd 0	ccd 1	ccd 2	ccd 3
level 1 events	206548	208381	225466	219830
rejected events	179090	178493	199081	194887
rejected %	86%	85%	88%	88%

	ccd 0	ccd 1	ccd 2	ccd 3
grade 0 events	9670	10290	9307	8421
	4%	4%	4%	3%
grade 1 events	116	132	141	139
	0%	0%	0%	0%
grade 2 events	6808	7402	6468	5730
	3%	3%	2%	2%
grade 3 events	2856	2926	2666	2625
	1%	1%	1%	1%
grade 4 events	2613	2902	2684	2714
	1%	1%	1%	1%
grade 5 events	10797	11574	10096	12572
	5%	5%	4%	5%
grade 6 events	5513	6369	5262	5456
	2%	3%	2%	2%
grade 7 events	168175	166786	188842	182173
	81%	80%	83%	82%

2.2 Compared Parameters

Parameter	Planned	Actual	Parameter	Planned	Actual
Instrument	ACIS	ACIS	Obspar format version number	7	7
Detector	ACIS-0123	ACIS-0123	Obspar file type	PREDICTED	ACTUAL
Grating	NONE	NONE	Obspar update status	NONE	UPDATED
Data mode	VFAINT	VFAINT	Number of optional ACIS chips dropped	0	0
Observation mode	POINTING	POINTING	On-chip summing requested	N	N
[deg] Pointing RA	53.133819	53.11237428718088	Subarray requested	NONE	NONE
[deg] Pointing Dec	-27.820332	-27.80028267010077	Alternating exposures requested	N	N
[deg] Pointing Roll	103.007815	103.2064824637103	[s] Primary exposure time	0.000000	3.1
[mm] SIM focus pos	-0.782348	-0.7809083437167272			
[mm] SIM defocus	0	0.001439871863259334			
[mm] SIM translation stage pos	-233.592463	-233.5874344608287			
[mm] SIM translation stage offset	0	-0.005018542100998502			
[s] Observation start time (MET)	523594261.184000	523592671.88673			
Observation start date	2014-08-05T02:49:54	2014-08-05T02:24:31			
[s] Observation end time (MET)	523640761.184000	523641620.76444			
Observation end date	2014-08-05T15:44:54	2014-08-05T16:00:20			
Read mode	TIMED	TIMED			

2.3 Aspect

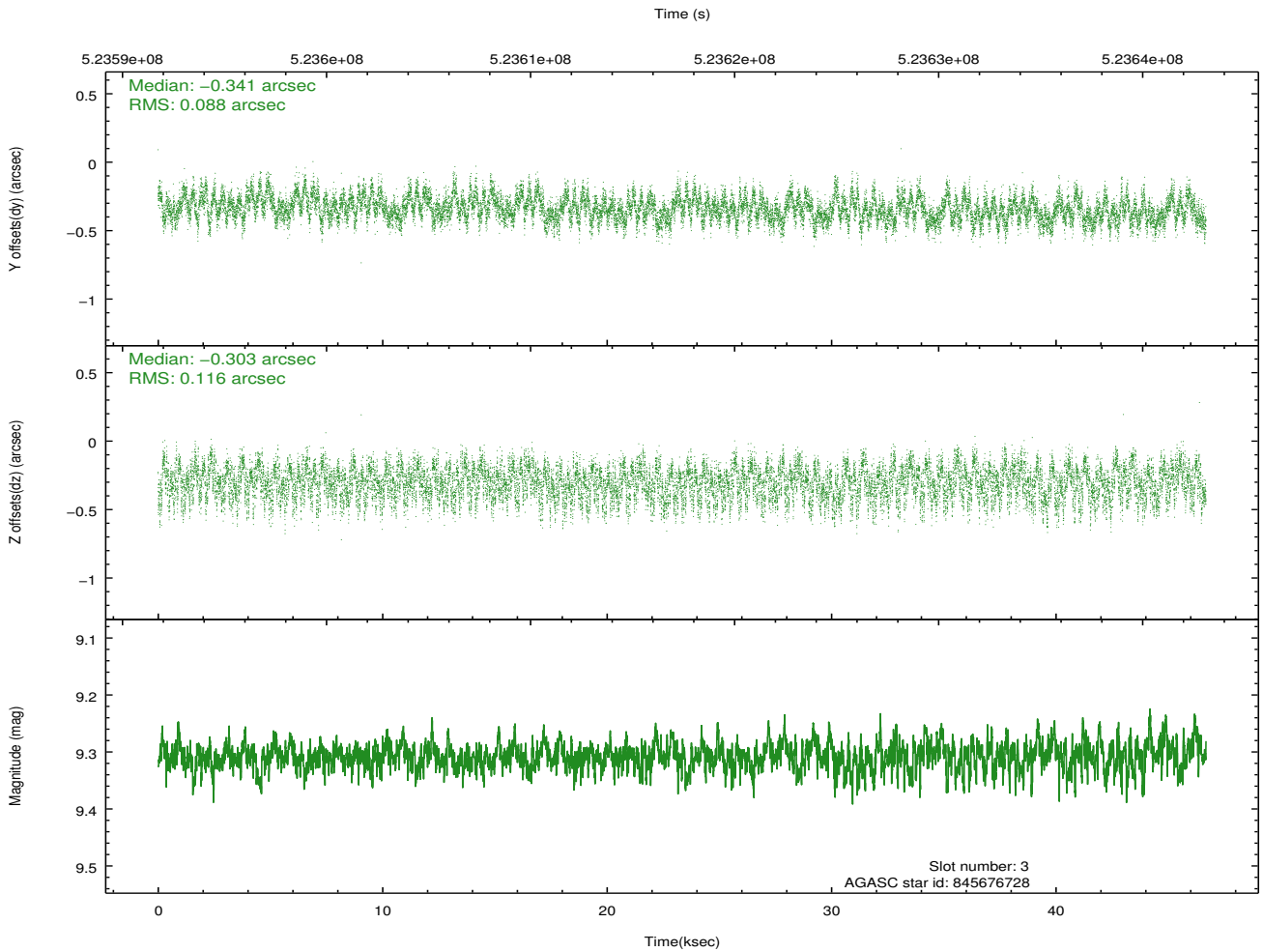
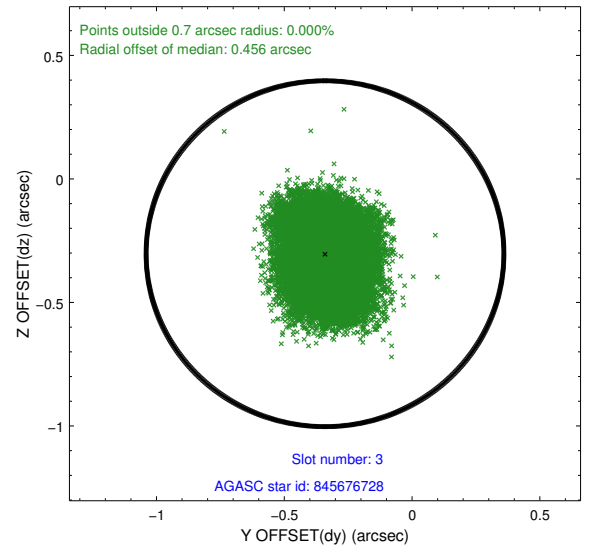
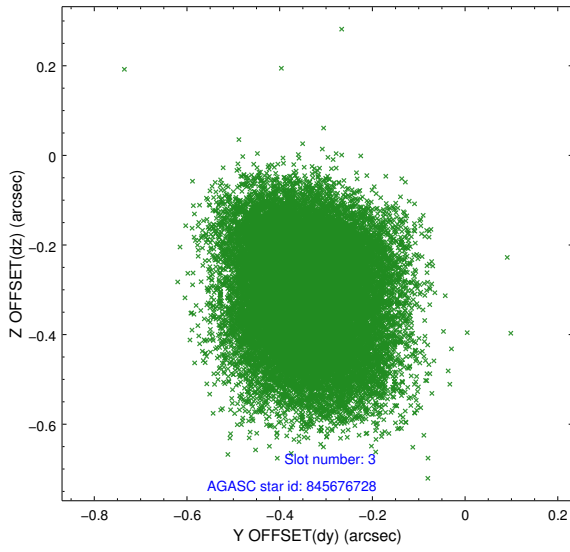
Slot Statistics

slot	status	id	mag	n_pts	med_dy	med_dz	dr1	dr2	ra	dec	mean_y	mean_z
0	FID	ACIS-I-2	6.97	11387	-0.148	-0.088	0.023	0.036	0.000000	0.000000	-778.79	-852.07
1	FID	ACIS-I-4	7.00	11386	0.311	0.105	0.018	0.026	0.000000	0.000000	2135.69	1054.36
2	FID	ACIS-I-5	7.05	11386	-0.267	0.053	0.020	0.038	0.000000	0.000000	-1832.78	1052.06
3	GUIDE	845676728	9.31	22755	-0.341	-0.303	0.159	0.246	52.877179	-27.664318	730.38	671.02
4	GUIDE	845807880	8.82	22764	0.070	0.111	0.147	0.218	53.382027	-27.886093	-408.84	-715.80
5	GUIDE	845808496	10.17	22389	0.180	0.195	0.221	0.355	53.777917	-27.725281	-133.13	-2075.41
6	BAD	845813656	10.15	21256	-0.167	-0.547	0.294	0.422	53.922767	-28.083703	-1494.81	-2225.62
7	GUIDE	845814592	9.02	22753	0.256	0.522	0.119	0.189	53.853010	-28.336603	-2332.16	-1801.67

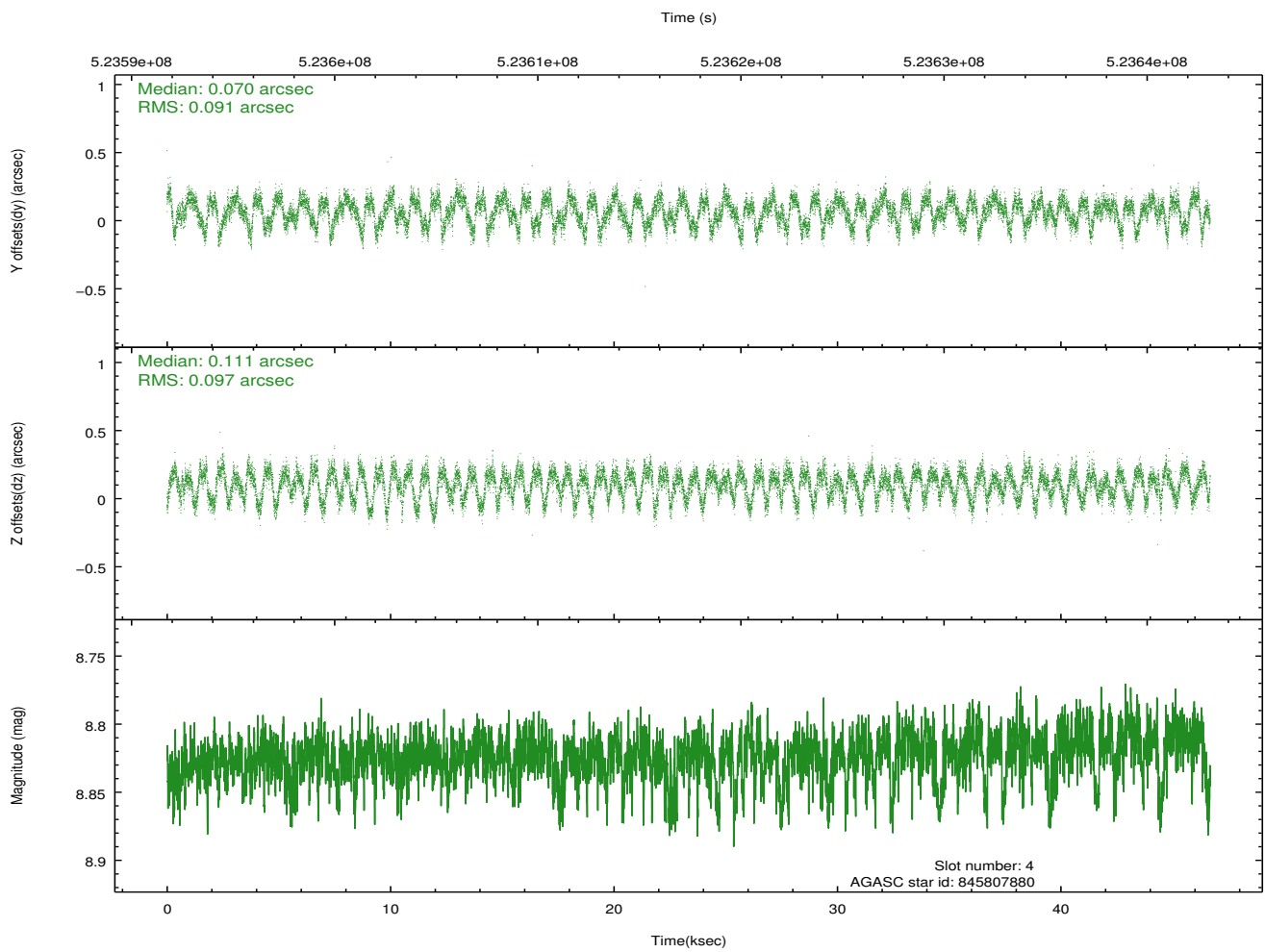
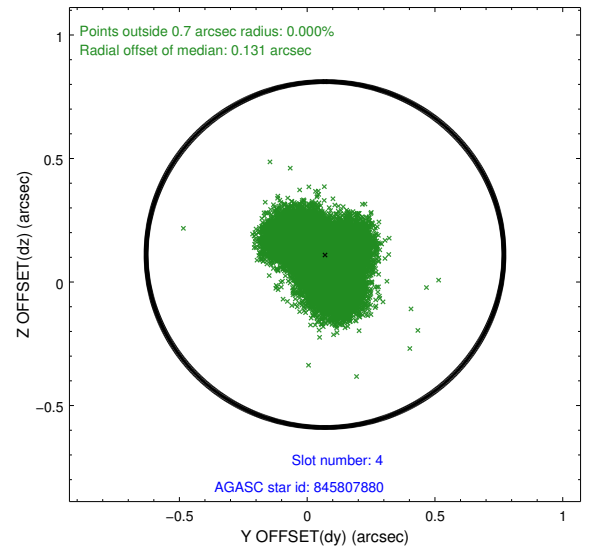
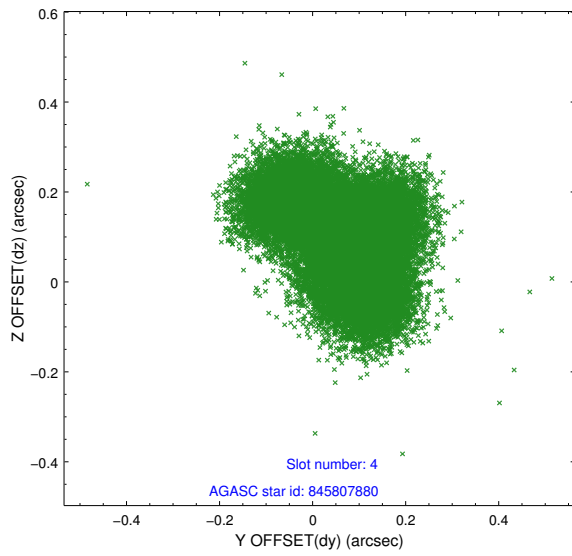
∞

2.4 Star Slots

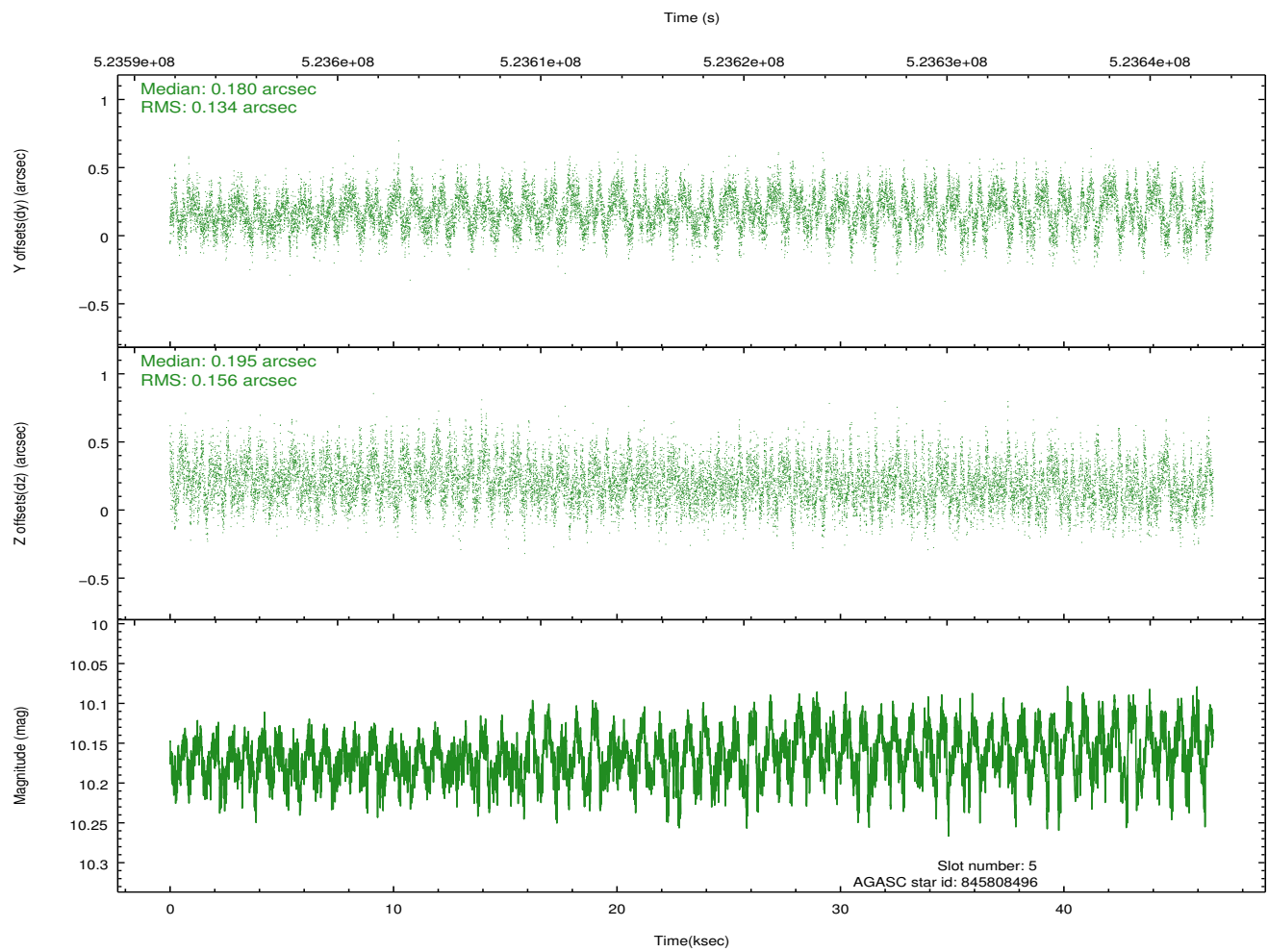
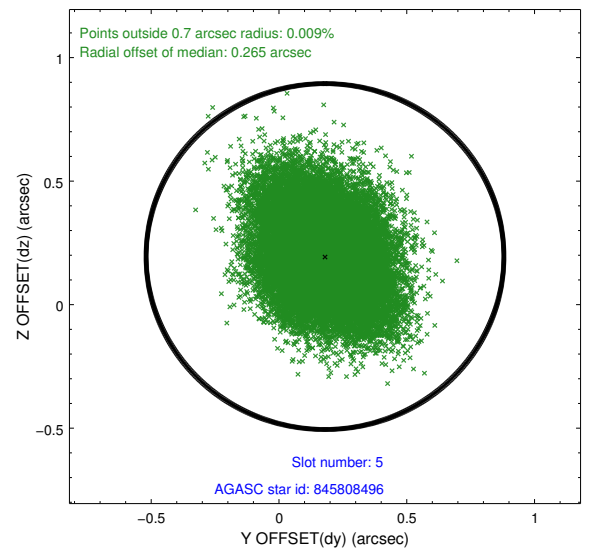
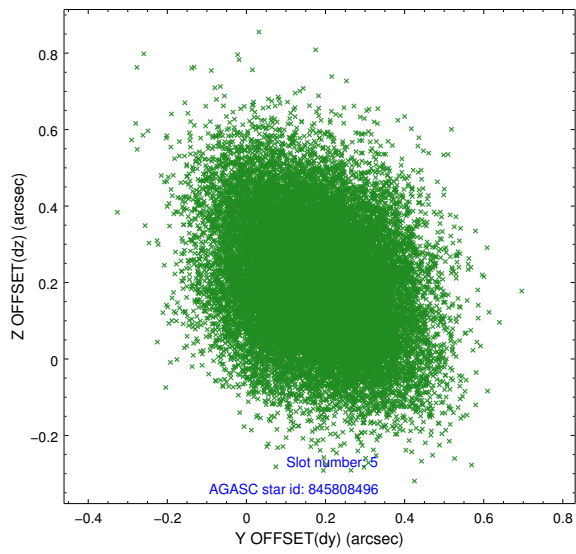
2.4.1 Slot 3



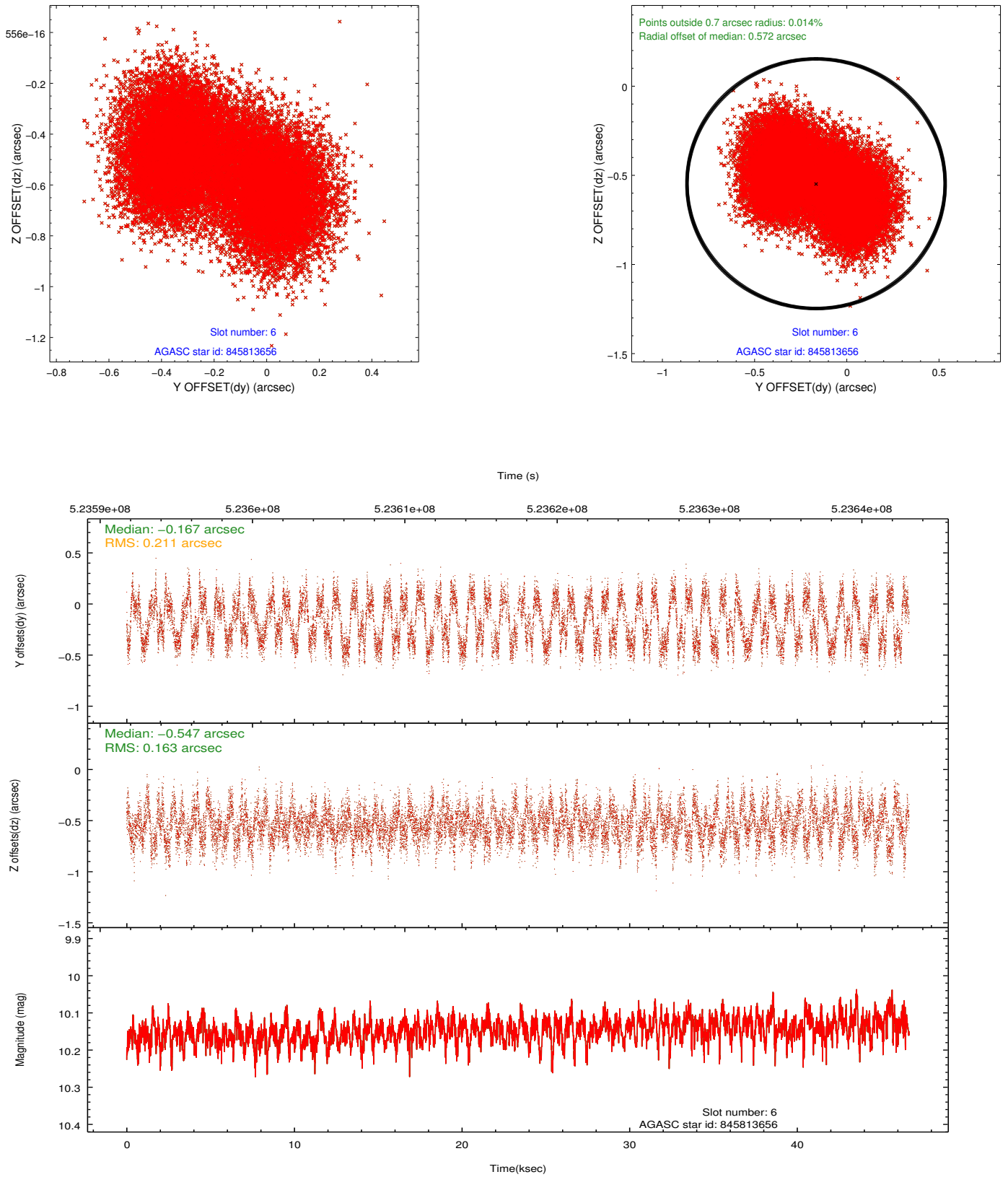
2.4.2 Slot 4



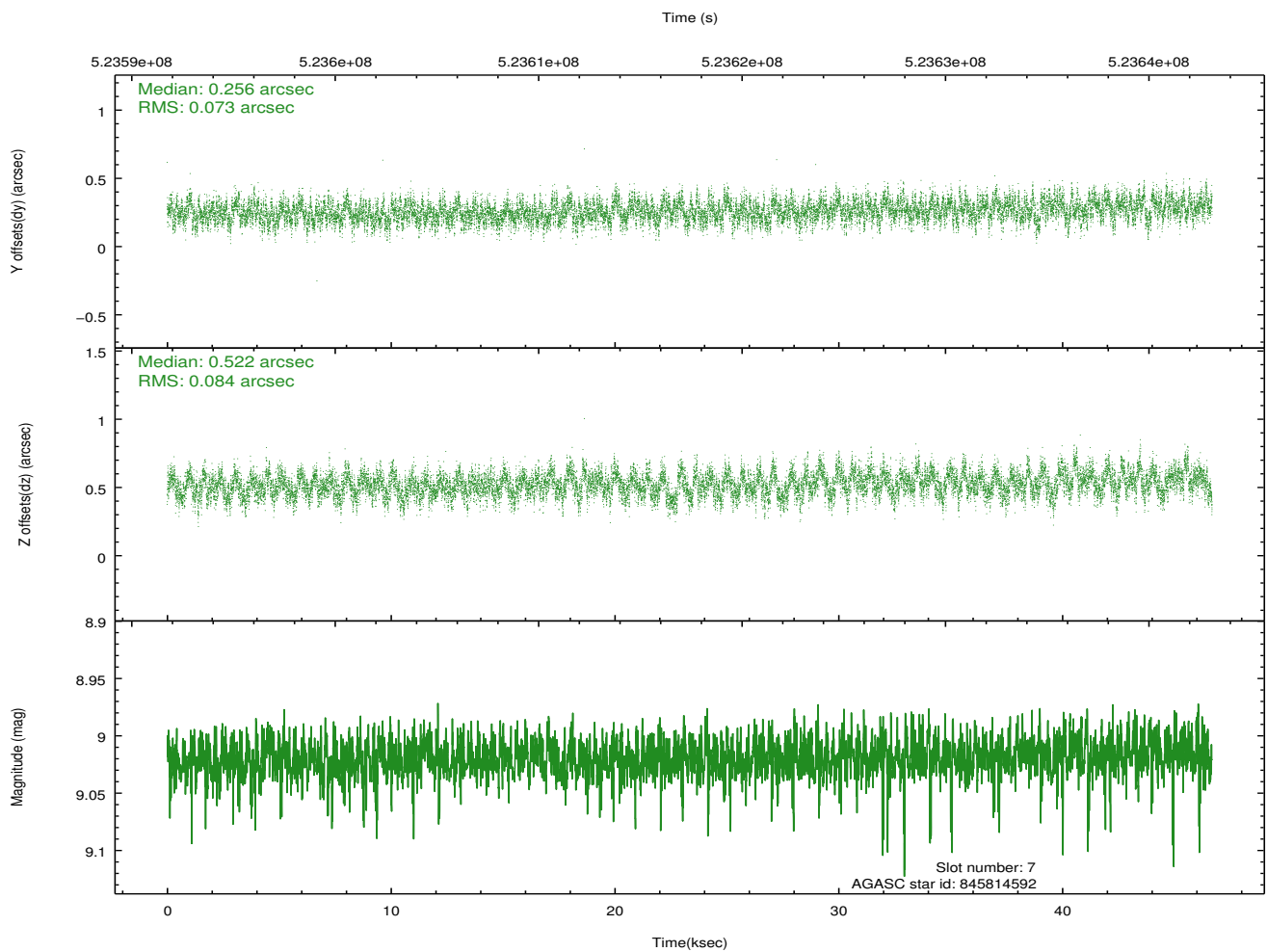
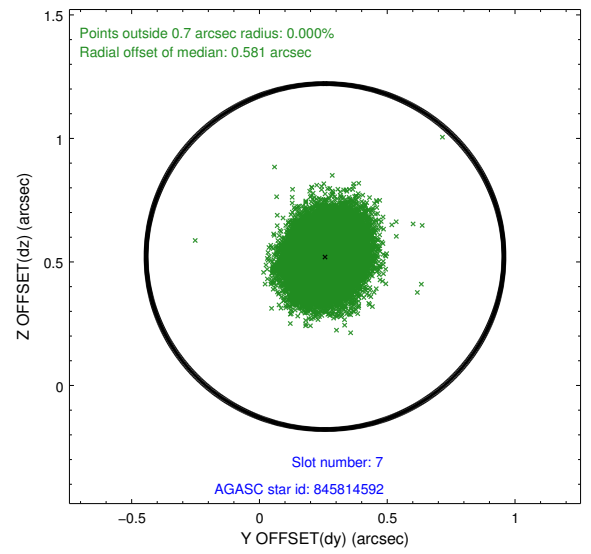
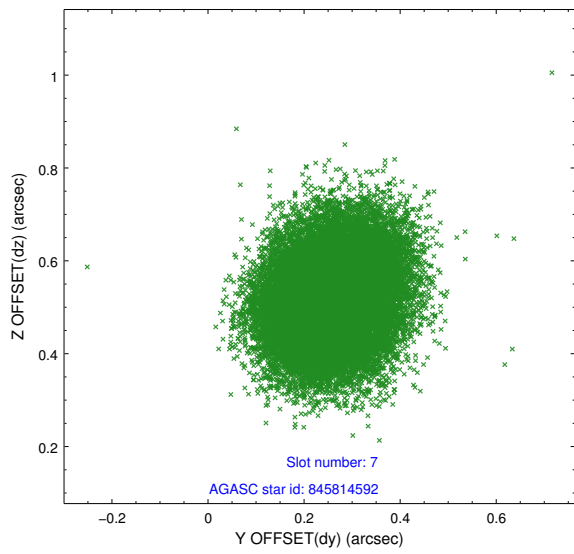
2.4.3 Slot 5



2.4.4 Slot 6

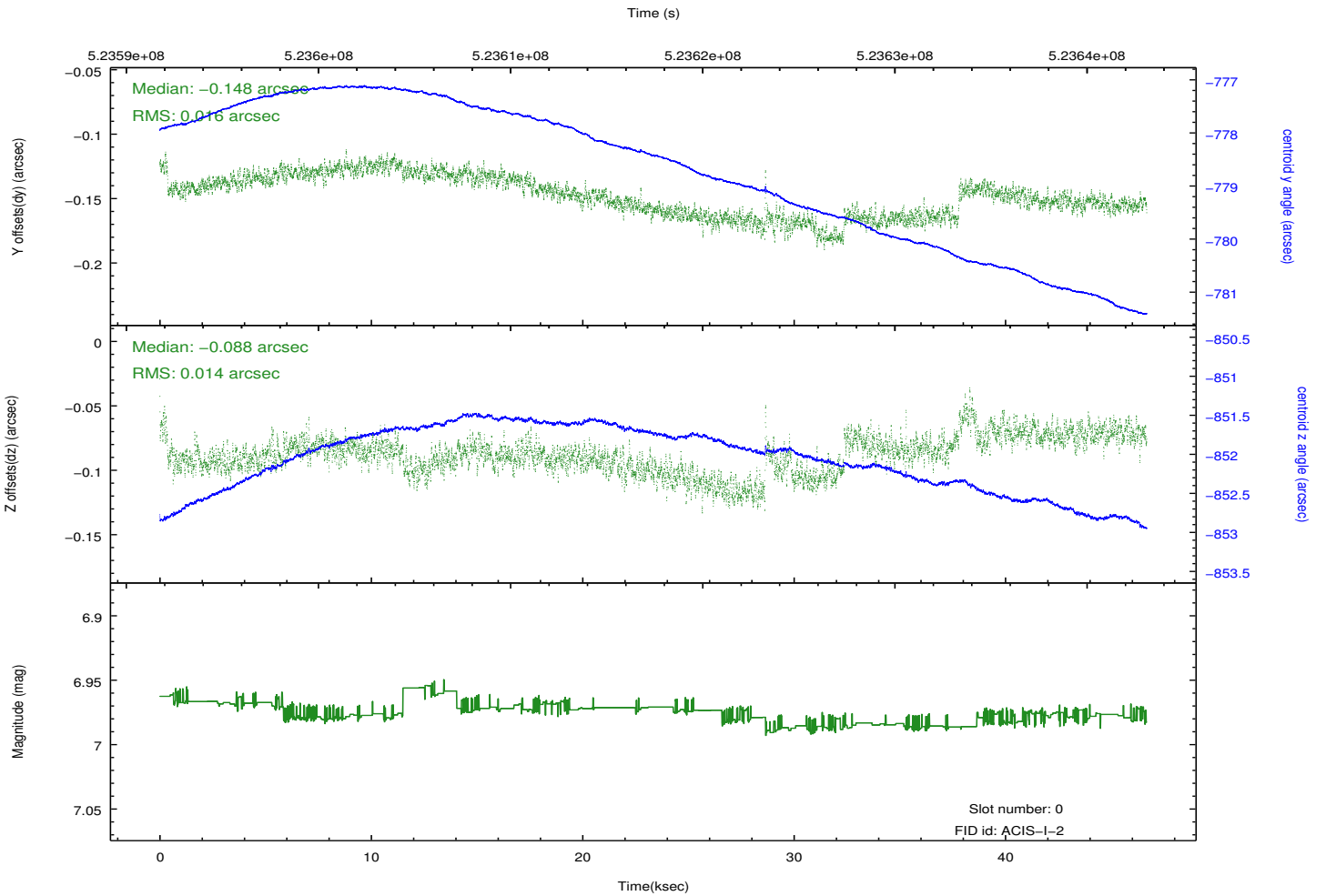
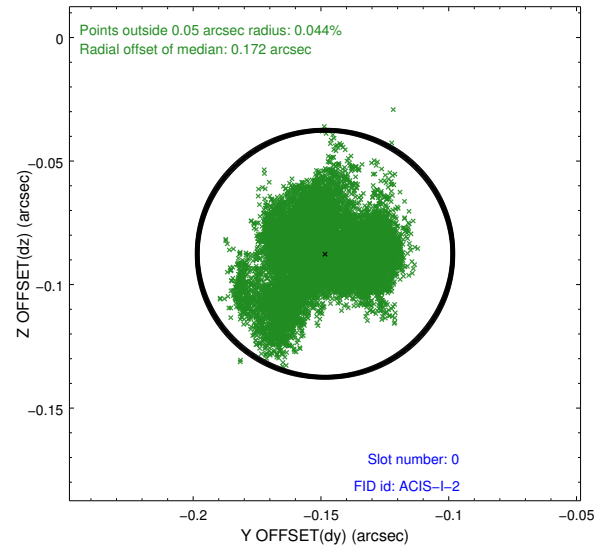
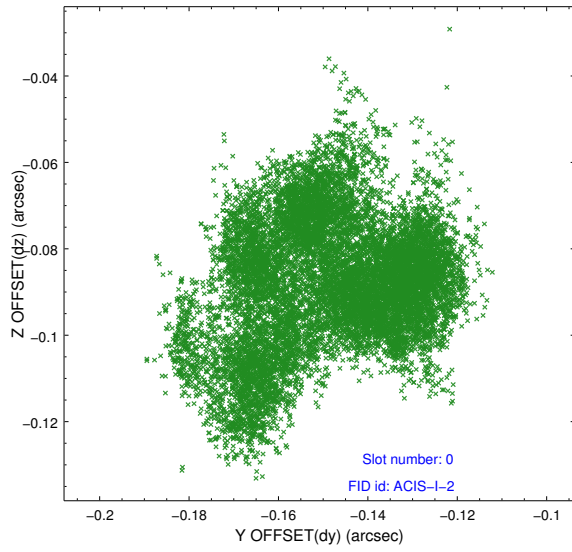


2.4.5 Slot 7

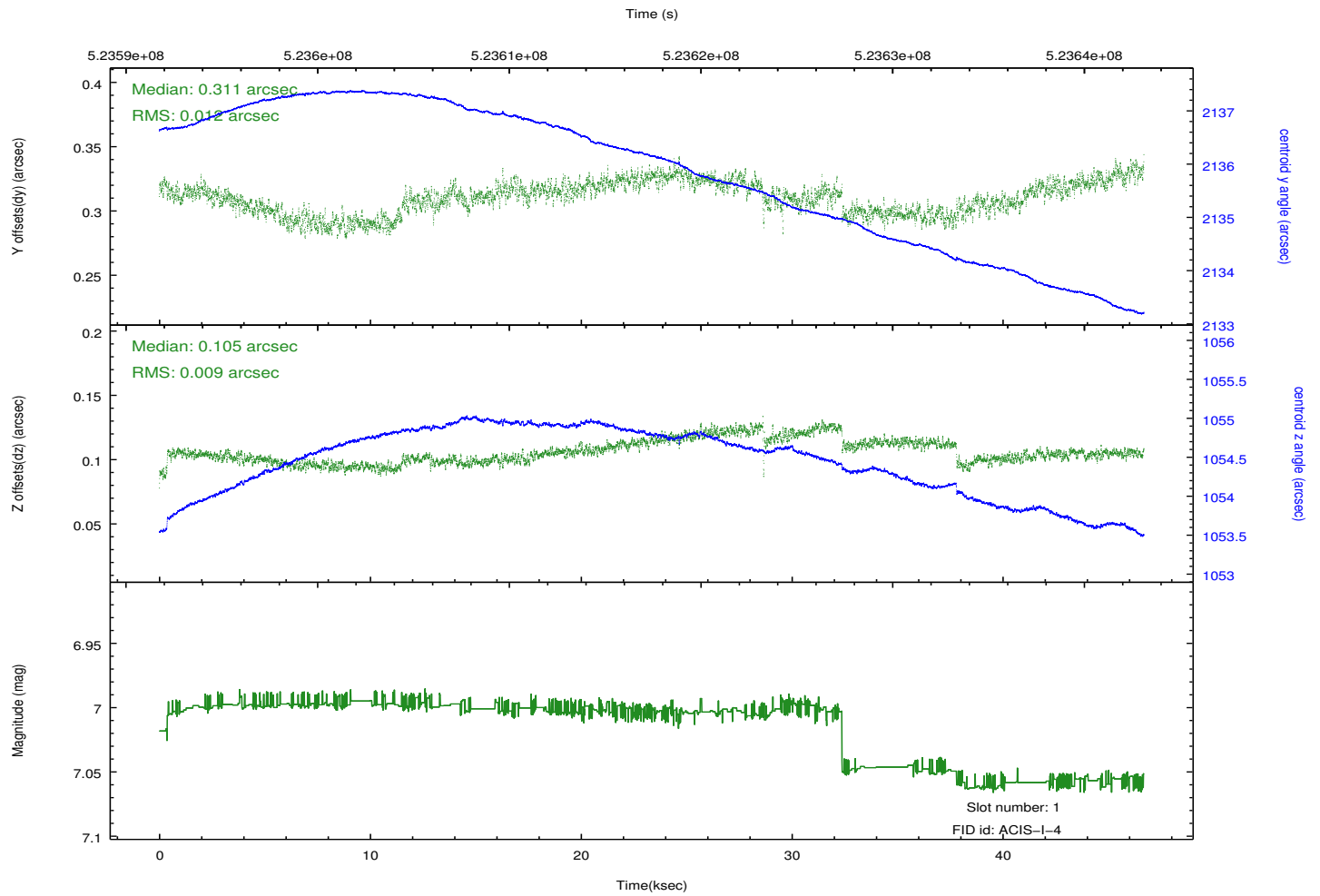
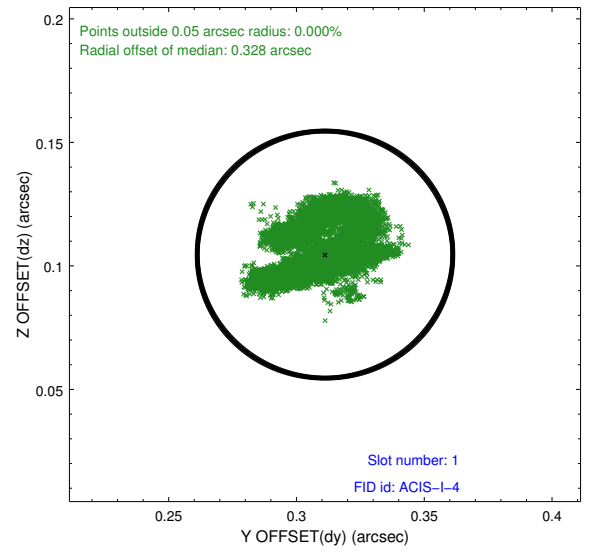
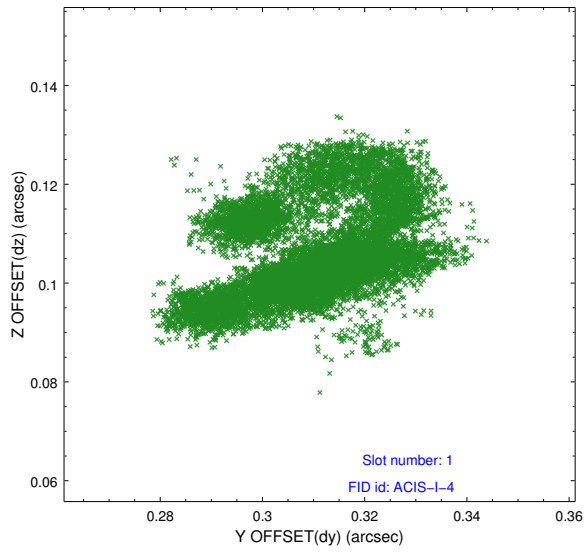


2.5 FID Slots

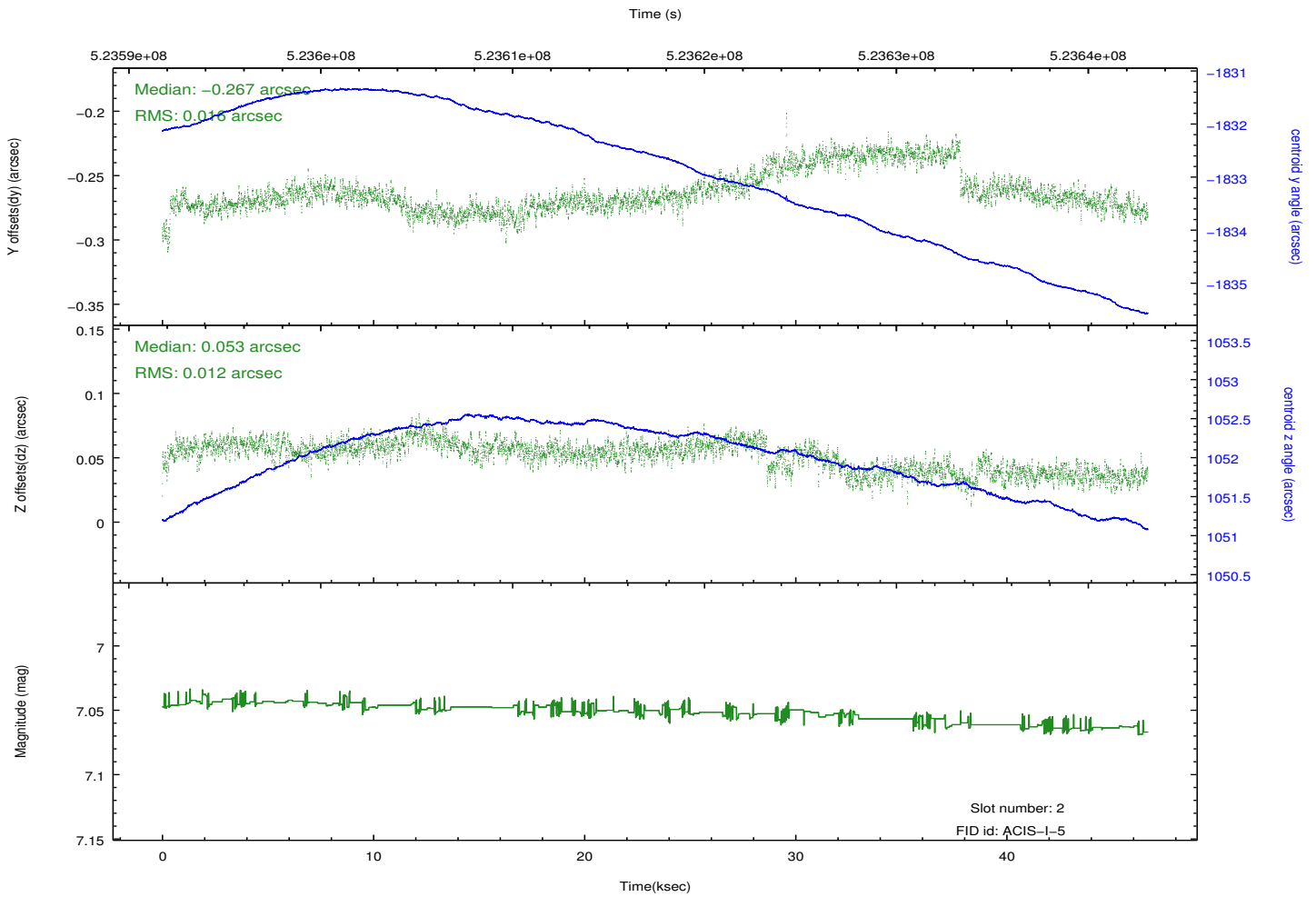
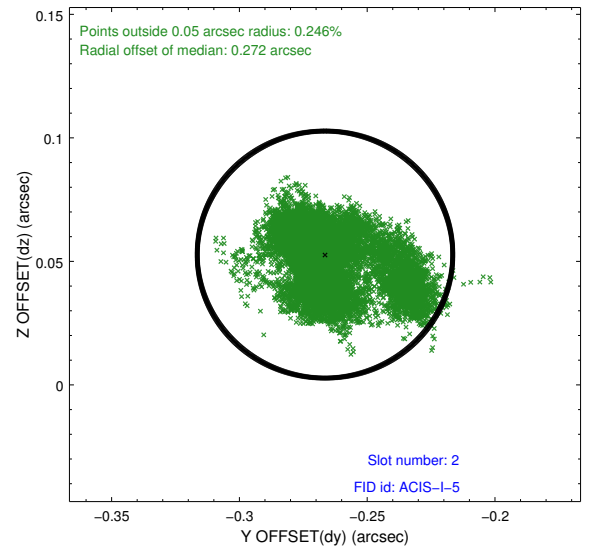
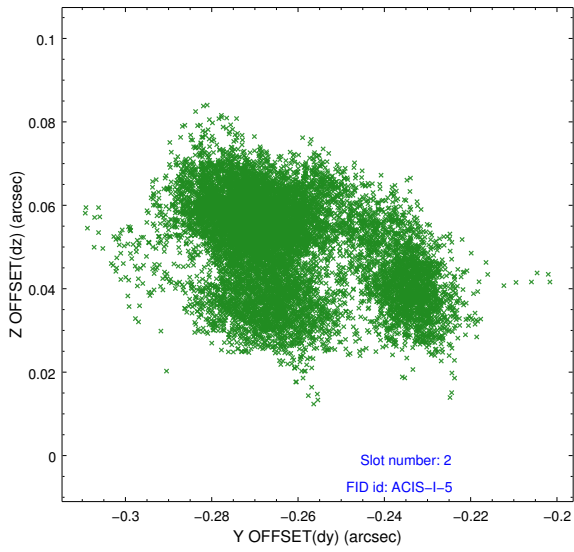
2.5.1 Slot 0



2.5.2 Slot 1



2.5.3 Slot 2



A Summary

A.1 Status

V&V Scientist	Beth Sundheim
V&V Date (YYYY-MM-DD)	2014.08.05
V&V Edition	1
V&V Disposition and Status	OK
V&V Charge Time	46.58663305068

A.2 Comments