

# V&V Reference Report

## L2 ASCDS Version : 8.4.5

Observation 1697 - L2 Version 3  
Chandra X-Ray Center

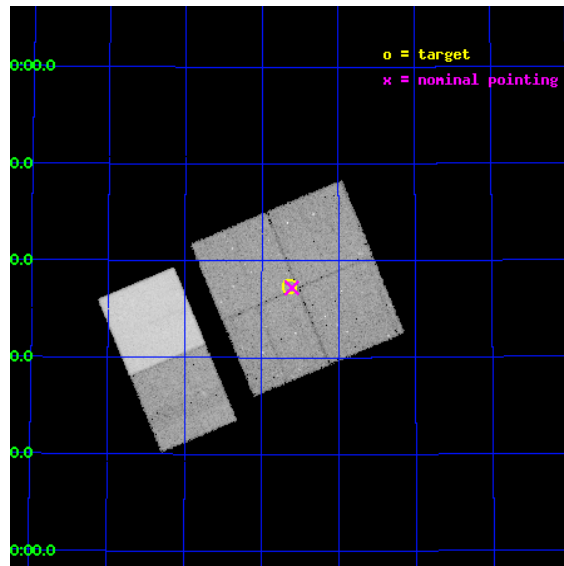
L2 Processing Date : Sep 19 2012

## Contents

<b>1</b>	<b>Front</b>	<b>2</b>
<b>2</b>	<b>OBI</b>	<b>3</b>
2.1	OBI . . . . .	3
2.1.1	Images . . . . .	3
2.1.2	Bias . . . . .	3
2.1.3	Parameters . . . . .	4
2.1.4	Events . . . . .	4
2.2	Compared Parameters . . . . .	5
2.3	Aspect . . . . .	6
2.4	Star Slots . . . . .	9
2.4.1	Slot 3 . . . . .	9
2.4.2	Slot 4 . . . . .	10
2.4.3	Slot 5 . . . . .	11
2.4.4	Slot 6 . . . . .	12
2.4.5	Slot 7 . . . . .	13
2.5	FID Slots . . . . .	14
2.5.1	Slot 0 . . . . .	14
2.5.2	Slot 1 . . . . .	15
2.5.3	Slot 2 . . . . .	16
<b>A</b>	<b>Summary</b>	<b>17</b>
A.1	Status . . . . .	17
A.2	Comments . . . . .	17

# 1 Front

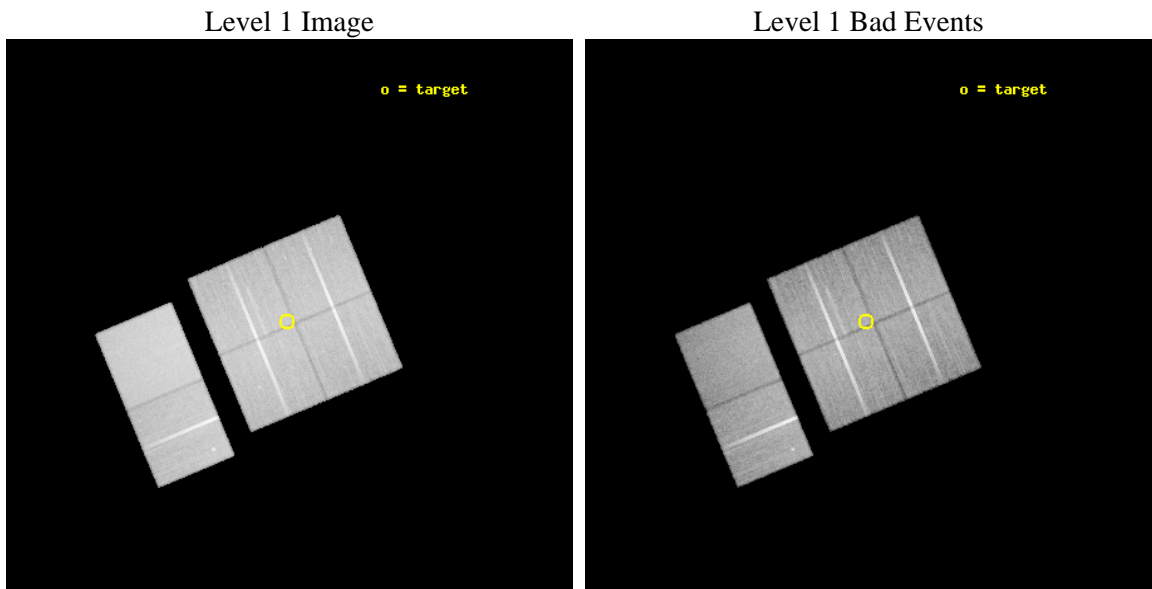
seq_num	900056	Sequence number
obs_id	1697	Observation id
title	CHANDRA OBSERVATIONS OF THE DEEP ISO FIELD	Proposal title
observer	Dr. Richard Mushotzky	Principal investigator
object	ISO NW #3	Source name
dtycycle	0	&#160
cycle	P	events from which exps? Prim/Second/Both
ra_targ	158.658333	Observer's specified target RA [deg]
dec_targ	57.623611	Observer's specified target Dec [deg]
ra_nom	158.65195412584	Nominal RA [deg]
dec_nom	57.620293603658	Nominal Dec [deg]
roll_nom	247.28045141897	Nominal Roll [deg]
revision	3	Processing version of data
ontime	44291.025730148	Sum of GTIs [s]
livetime	43730.186093499	Livetime [s]
ontime0	44284.420689642	Sum of GTIs [s]
ontime1	44290.943650156	Sum of GTIs [s]
ontime2	44287.743729919	Sum of GTIs [s]
ontime3	44291.025730148	Sum of GTIs [s]
ontime6	44291.107810155	Sum of GTIs [s]
ontime7	44287.825809896	Sum of GTIs [s]
l2events	321670	Number of level 2 events



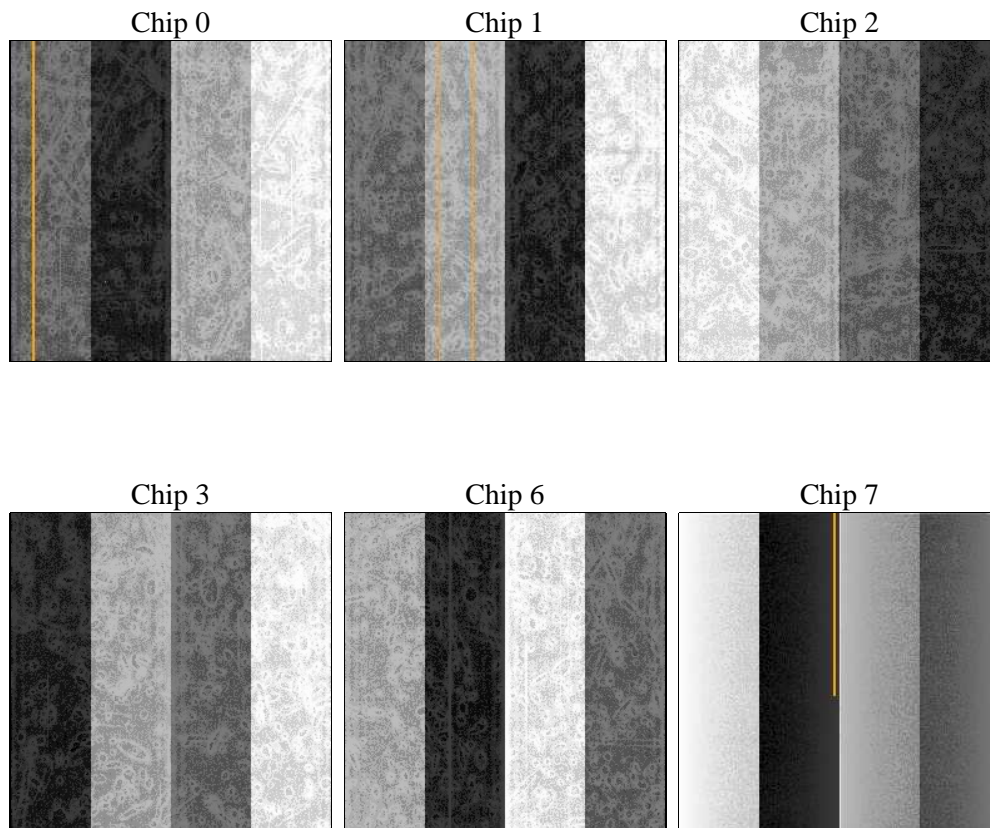
## 2 OBI

### 2.1 OBI

#### 2.1.1 Images



#### 2.1.2 Bias



### 2.1.3 Parameters

obi_num	1	Obi number	sched_exp_time	44336.009000	[s] Scheduled observation exposure time
ascdsver	8.4.5	Processing system revision	ontime	44291.025730148	Sum of GTIs [s]
caldbver	4.5.1.1	&#160	ontime0	44284.420689642	Sum of GTIs [s]
date	2012-09-18T23:24:03	Date and time of file creation	ontime1	44290.943650156	Sum of GTIs [s]
revision	3	Processing version of data	ontime2	44287.743729919	Sum of GTIs [s]
			ontime3	44291.025730148	Sum of GTIs [s]
			ontime6	44291.107810155	Sum of GTIs [s]
			ontime7	44287.825809896	Sum of GTIs [s]
			l1events	1784677	Number of level 1 events

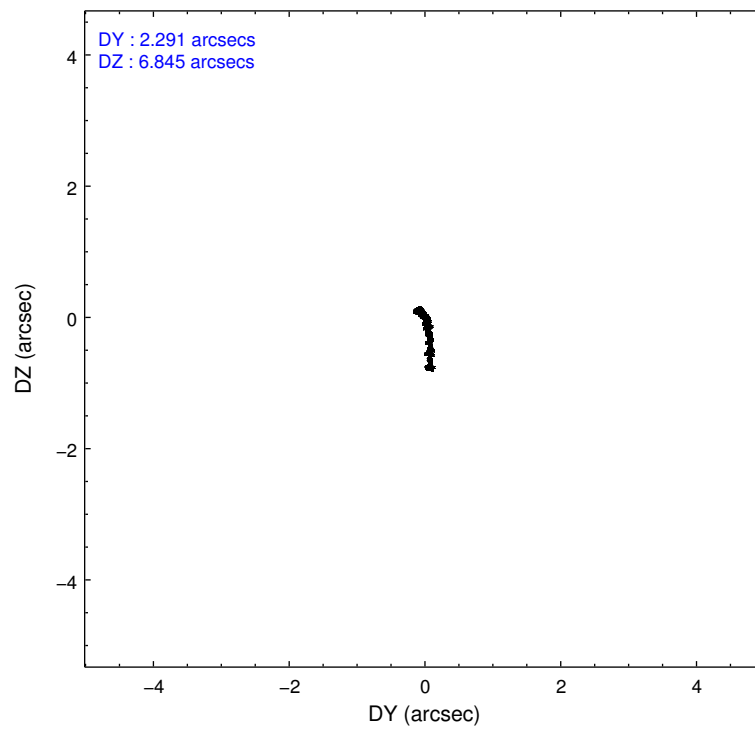
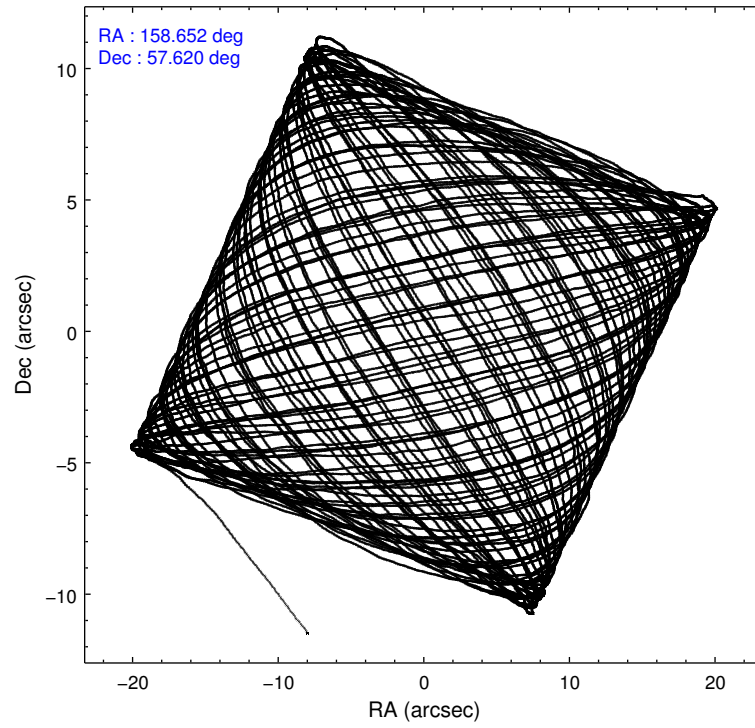
### 2.1.4 Events

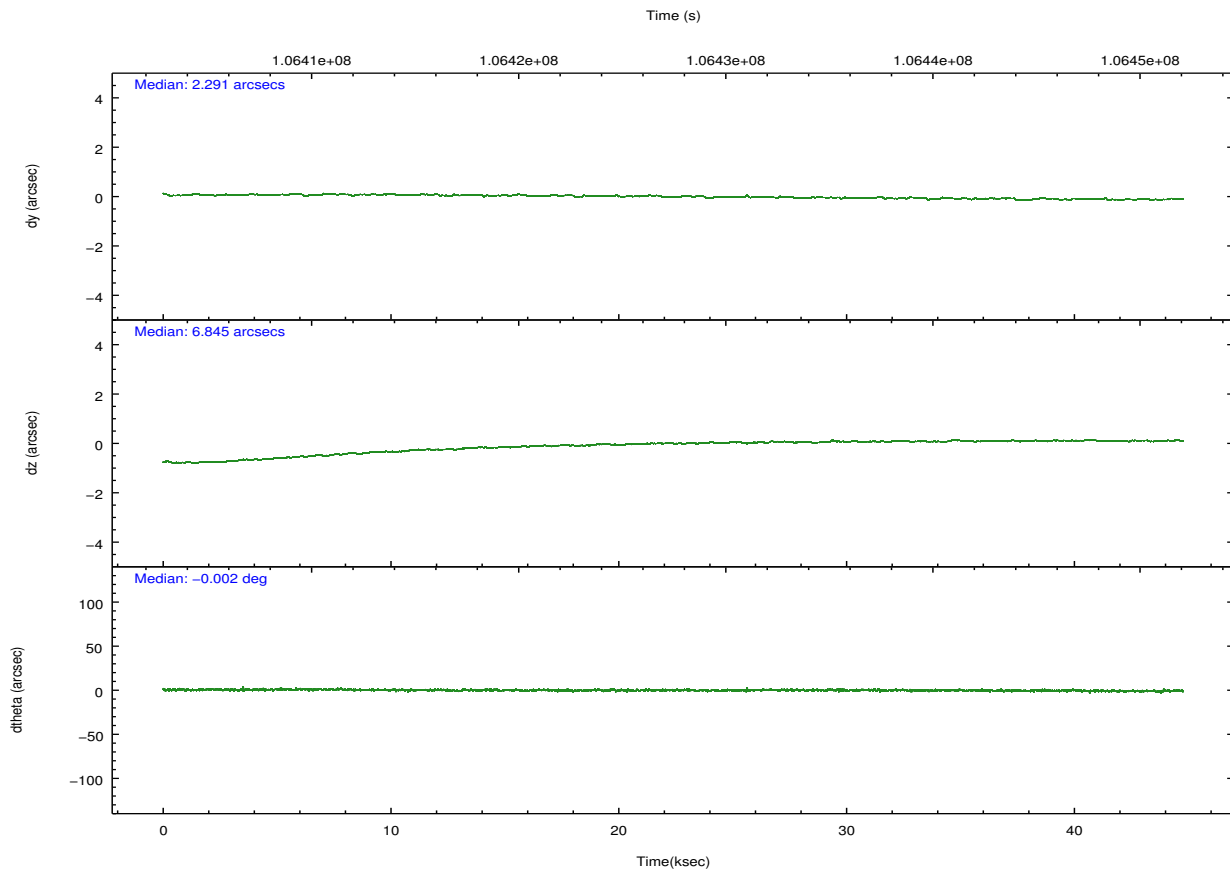
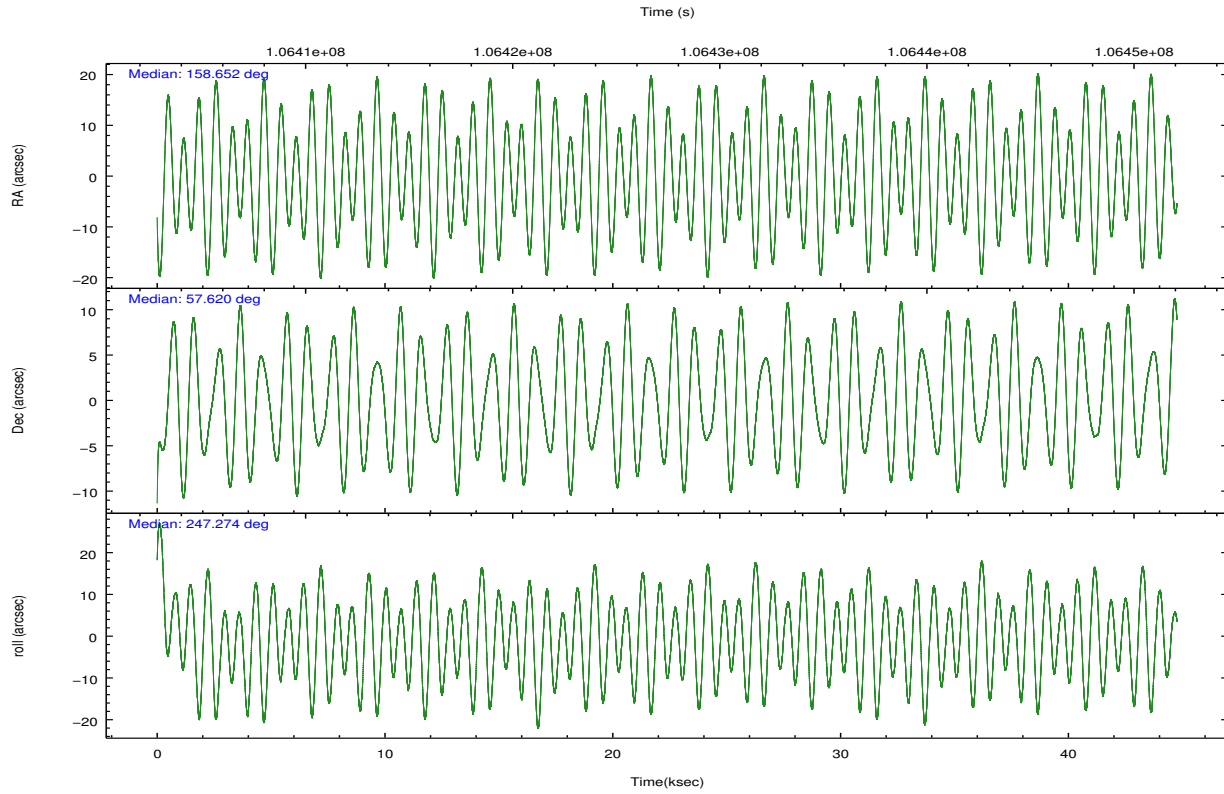
	ccd 0	ccd 1	ccd 2	ccd 3	ccd 6	ccd 7		ccd 0	ccd 1	ccd 2	ccd 3	ccd 6	ccd 7
level 1 events	263876	269314	288877	286680	296692	379238	grade 0 events	16672	16668	16884	16639	16727	16001
rejected events	227356	231362	252732	250895	259382	211969		6%	6%	5%	5%	5%	4%
rejected %	86%	85%	87%	87%	87%	55%	grade 1 events	139	135	131	162	255	308
								0%	0%	0%	0%	0%	0%
							grade 2 events	7389	7322	7290	6795	7114	32148
								2%	2%	2%	2%	2%	8%
							grade 3 events	3534	3594	3056	3143	3436	14881
								1%	1%	1%	1%	1%	3%
							grade 4 events	3205	3717	3111	3256	3263	14703
								1%	1%	1%	1%	1%	3%
							grade 5 events	10399	10913	9677	11032	12147	34651
								3%	4%	3%	3%	4%	9%
							grade 6 events	5725	6656	5813	5961	6778	89565
								2%	2%	2%	2%	2%	23%
							grade 7 events	216813	220309	242915	239692	246972	176981
								82%	81%	84%	83%	83%	46%

## 2.2 Compared Parameters

Parameter	Planned	Actual	Parameter	Planned	Actual
Instrument	ACIS	ACIS	Obspar format version number	7	7
Detector	ACIS-012367	ACIS-012367	Obspar file type	PREDICTED	ACTUAL
Grating	NONE	NONE	Obspar update status	NONE	UPDATED
Data mode	FAINT	FAINT	Number of optional ACIS chips dropped	0	0
Observation mode	POINTING	POINTING	On-chip summing requested	N	N
[deg] Pointing RA	158.645442	158.6519541258357	Subarray requested	NONE	NONE
[deg] Pointing Dec	57.647520	57.62029360365796	Alternating exposures requested	N	N
[deg] Pointing Roll	247.077266	247.2804514189684	[s] Primary exposure time	0.000000	3.2
[mm] SIM focus pos	-0.782348	-0.7809083437167272			
[mm] SIM defocus	0	0.001439871863259334			
[mm] SIM translation stage pos	-233.592463	-233.5874344608287			
[mm] SIM translation stage offset	0	-0.005018542100998502			
[s] Observation start time (MET)	106405499.184000	106404410.6661			
Observation start date	2001-05-16T13:03:55	2001-05-16T12:46:50			
[s] Observation end time (MET)	106449835.184000	106450149.75538			
Observation end date	2001-05-17T01:22:51	2001-05-17T01:29:09			
Read mode	TIMED	TIMED			

## 2.3 Aspect



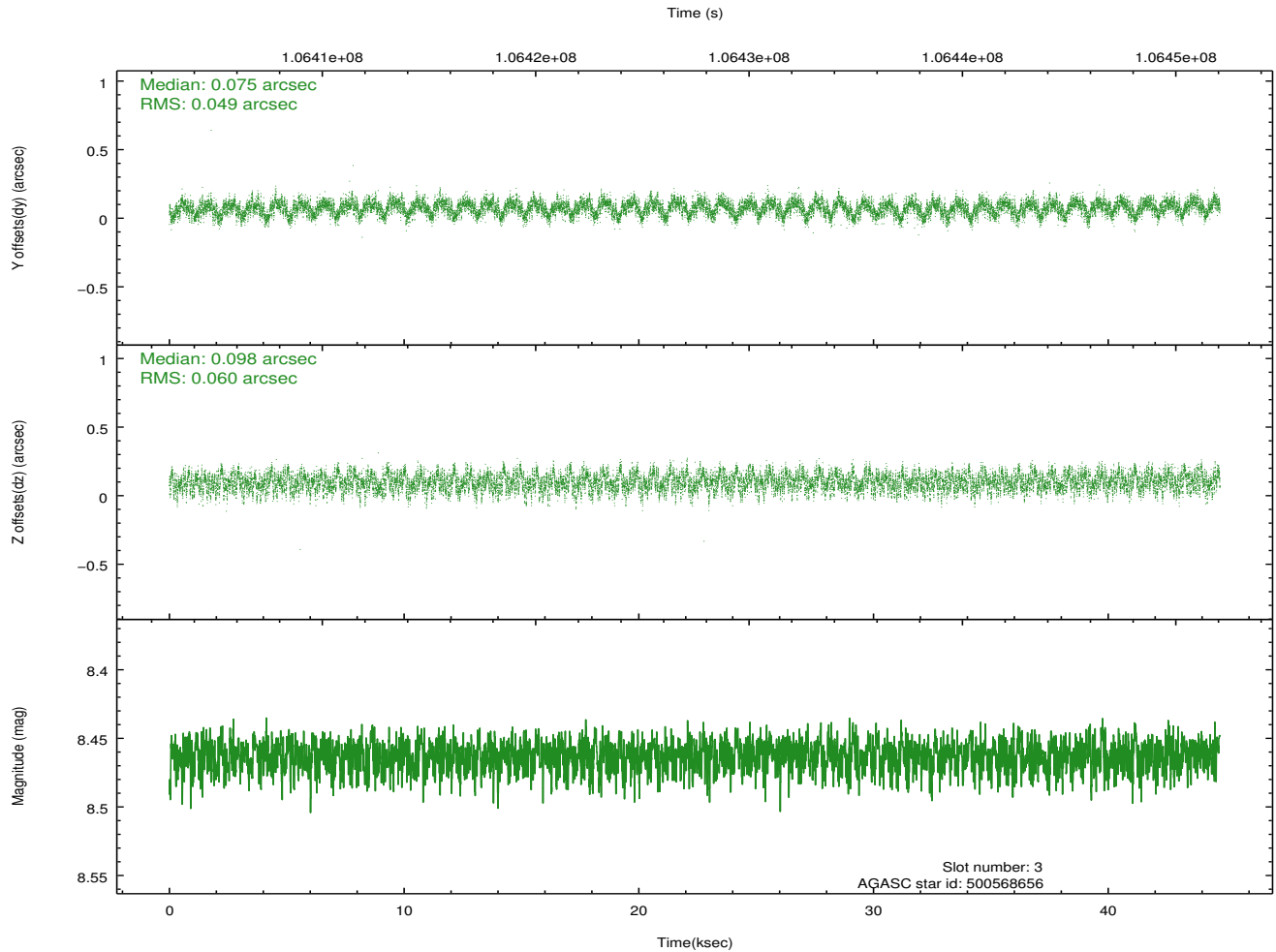
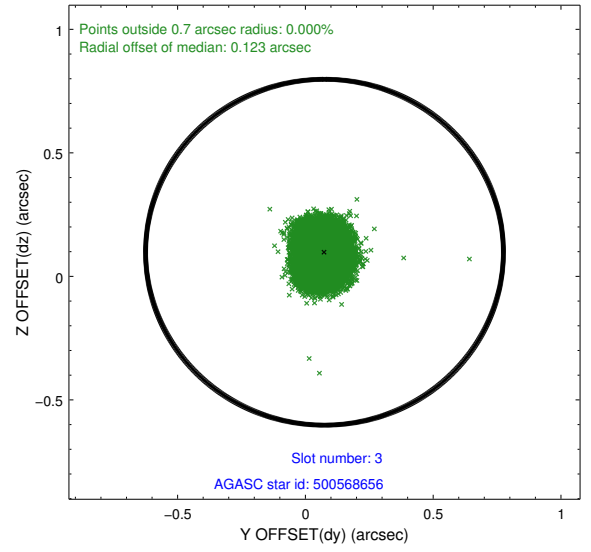
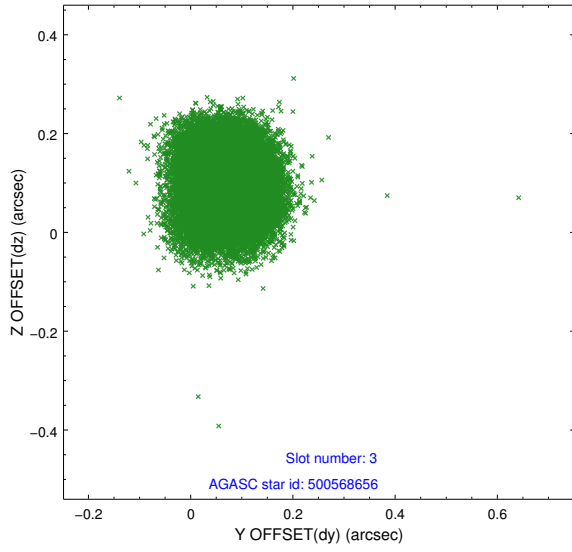


### Slot Statistics

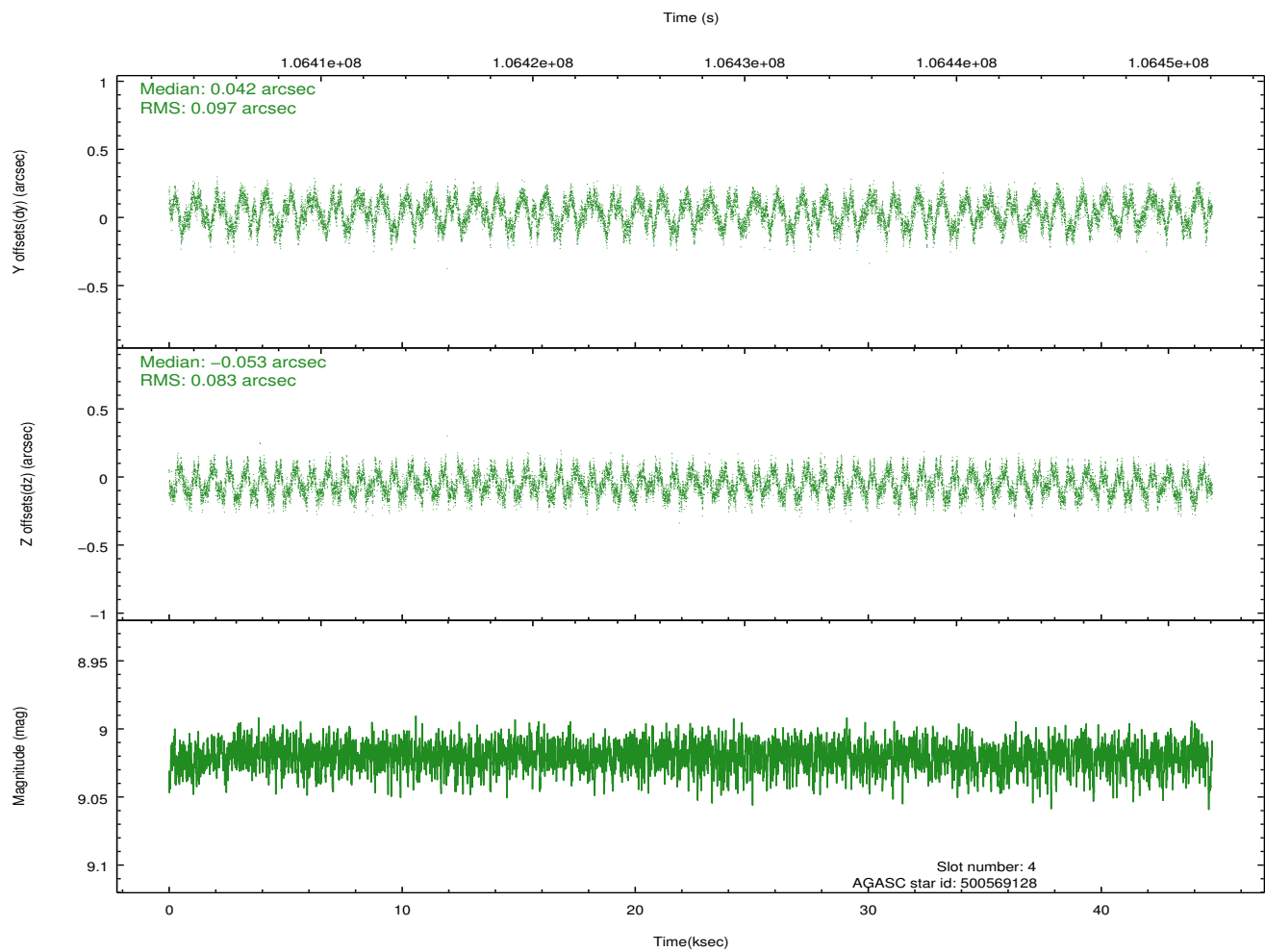
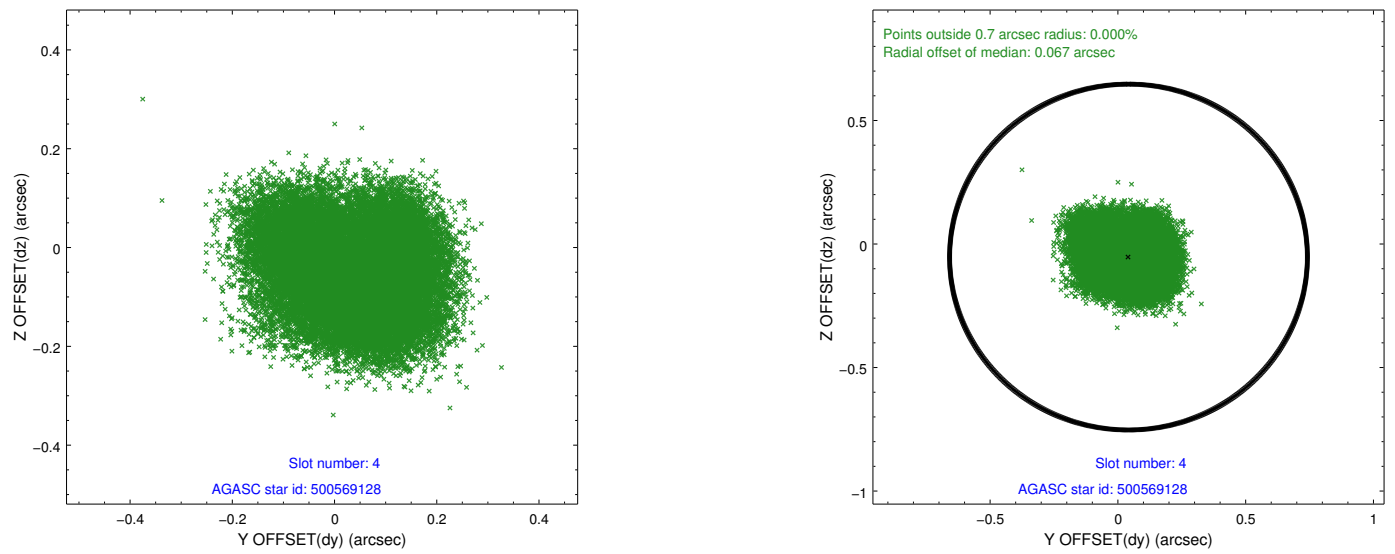
slot	status	id	mag	n_pts	med_dy	med_dz	dr1	dr2	ra	dec	mean_y	mean_z
0	FID	ACIS-I-2	7.16	10917	-0.039	-0.056	0.011	0.020	0.000000	0.000000	-756.68	-836.52
1	FID	ACIS-I-4	7.18	10917	-0.025	0.045	0.009	0.018	0.000000	0.000000	2157.39	1069.75
2	FID	ACIS-I-5	7.23	10918	-0.037	0.080	0.012	0.020	0.000000	0.000000	-1810.51	1067.64
3	GUIDE	500568656	8.46	21830	0.075	0.098	0.083	0.130	159.217900	57.306375	694.08	1501.44
4	GUIDE	500569128	9.02	21832	0.042	-0.053	0.140	0.207	157.930103	57.115848	2301.44	-545.54
5	GUIDE	500965000	8.92	21827	-0.004	0.036	0.078	0.126	159.614449	57.527596	-343.44	1887.41
6	GUIDE	500961384	9.48	21804	-0.046	0.021	0.103	0.164	159.416101	58.123584	-2156.10	678.03
7	GUIDE	500962432	9.51	21827	-0.055	-0.105	0.086	0.140	158.977500	58.020820	-1485.07	58.36

## 2.4 Star Slots

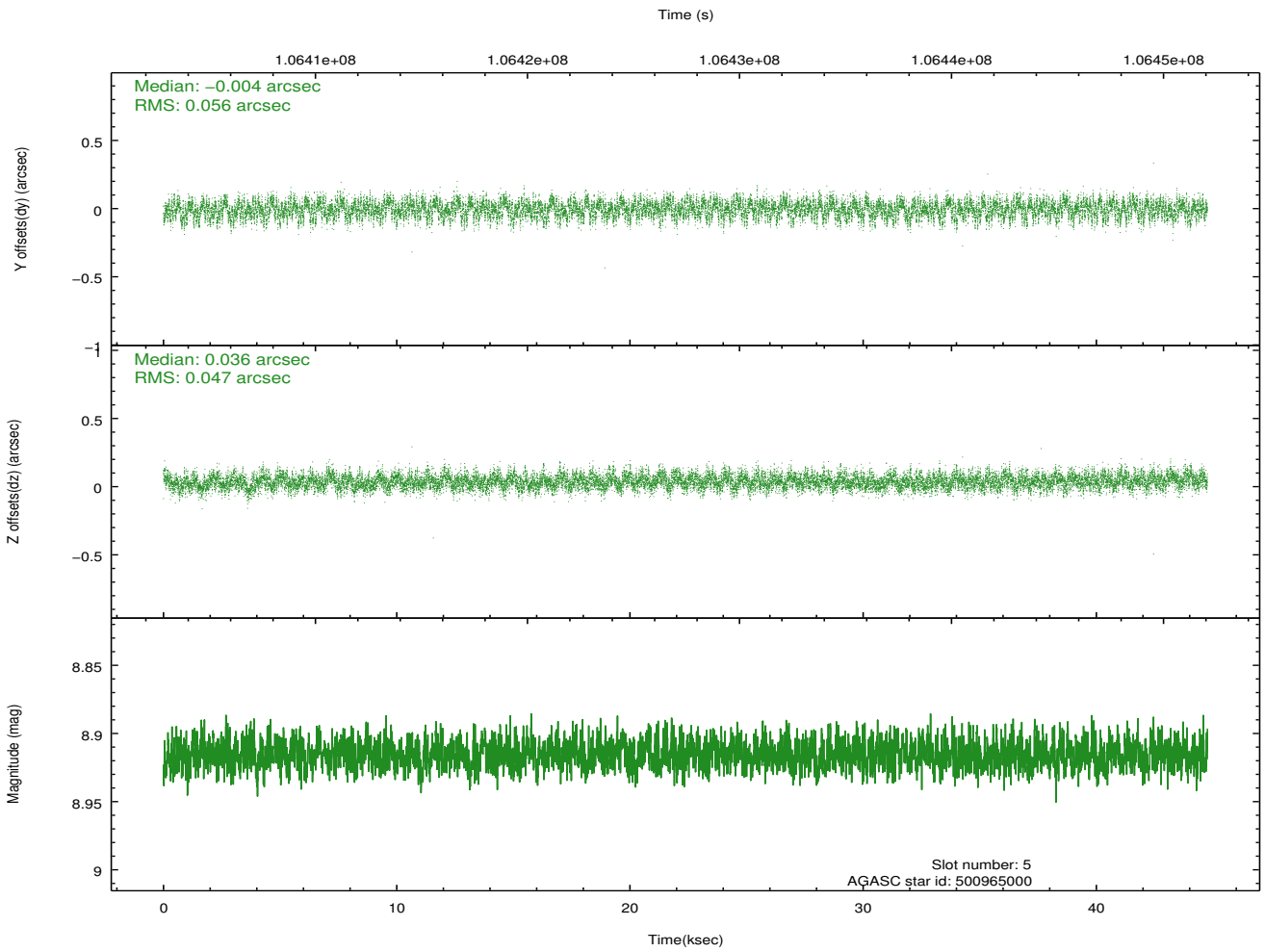
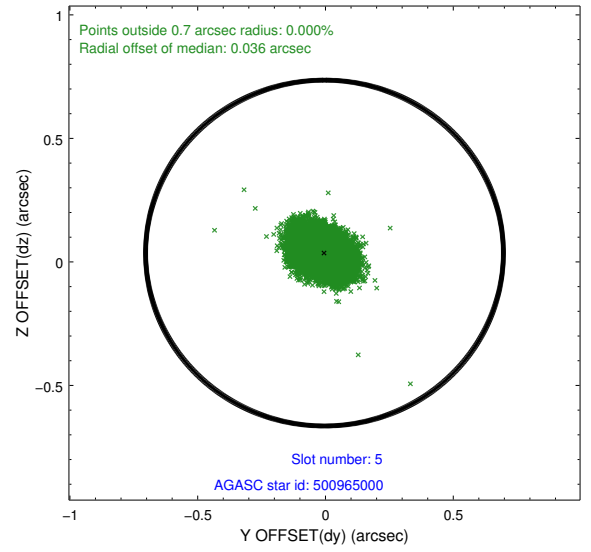
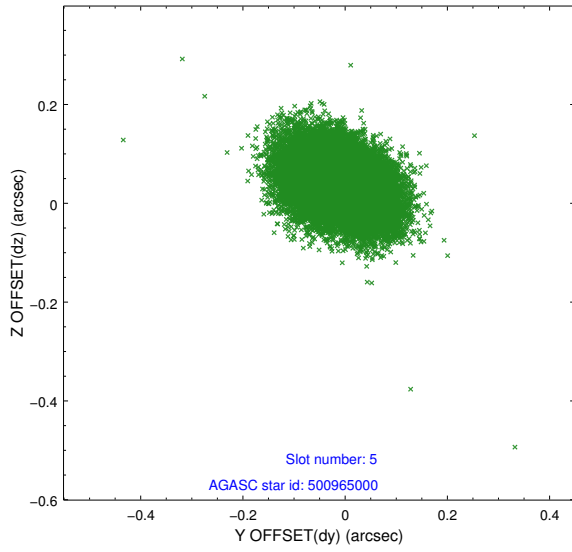
### 2.4.1 Slot 3



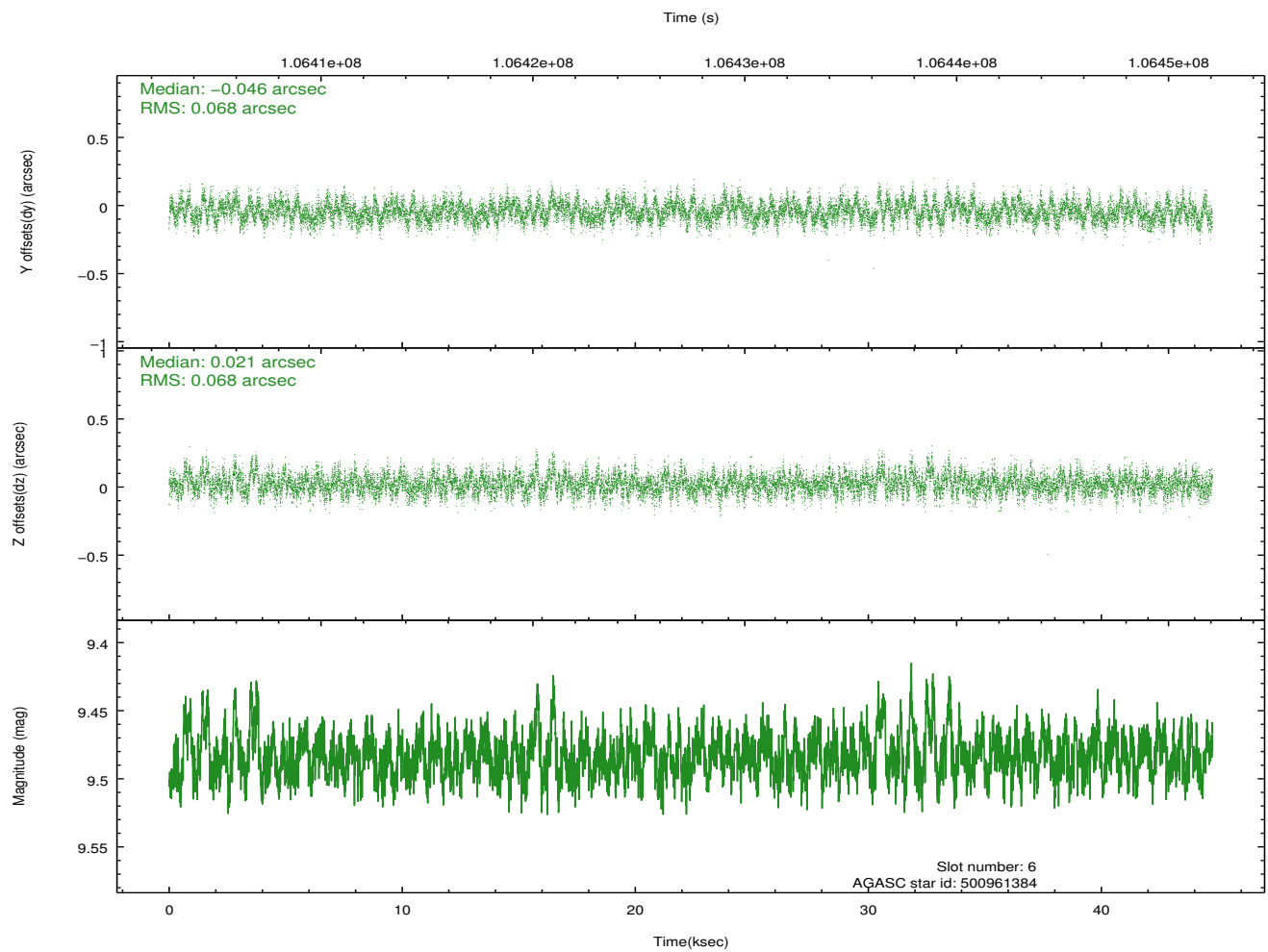
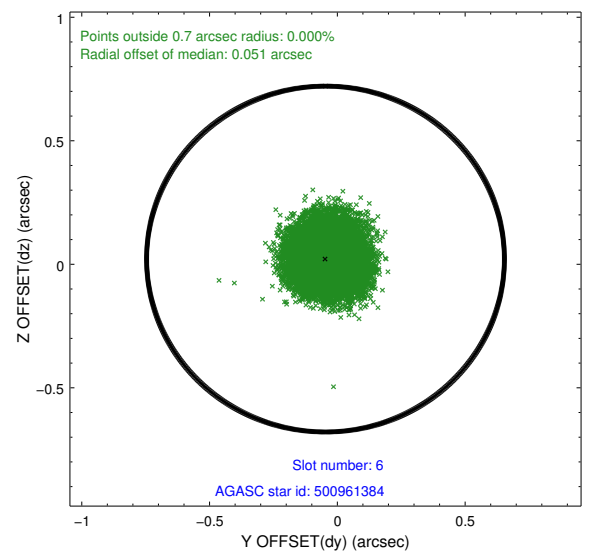
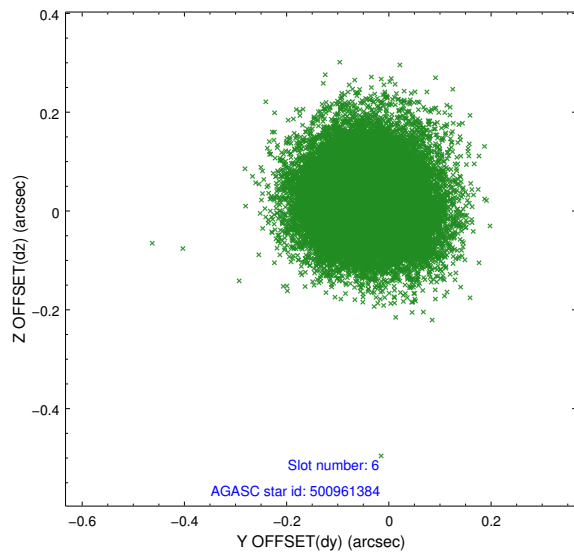
## 2.4.2 Slot 4



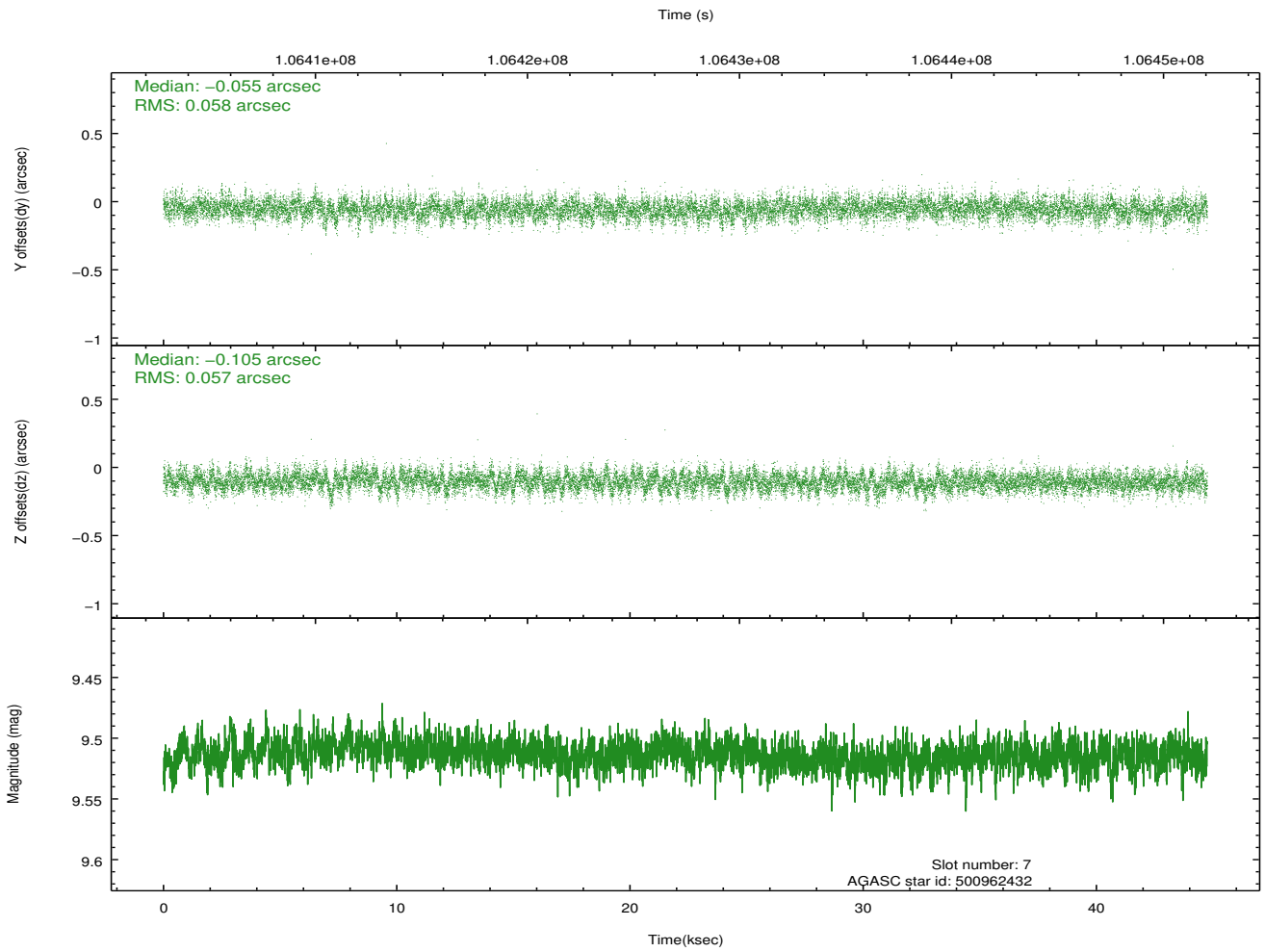
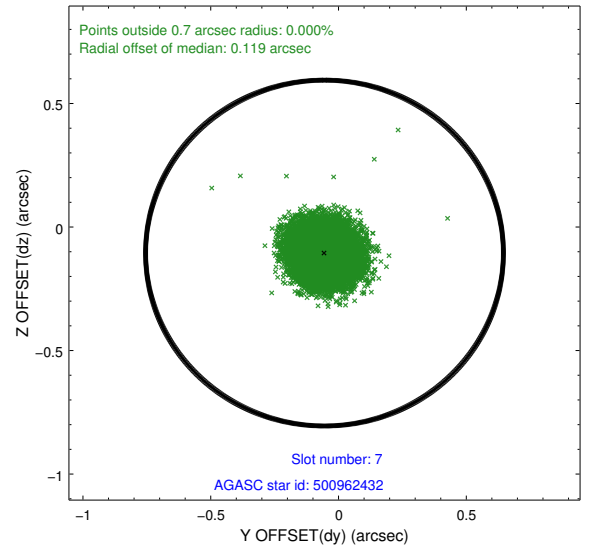
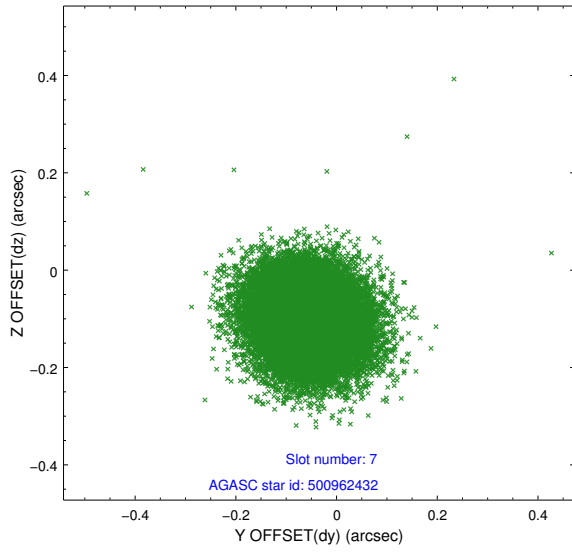
### 2.4.3 Slot 5



## 2.4.4 Slot 6

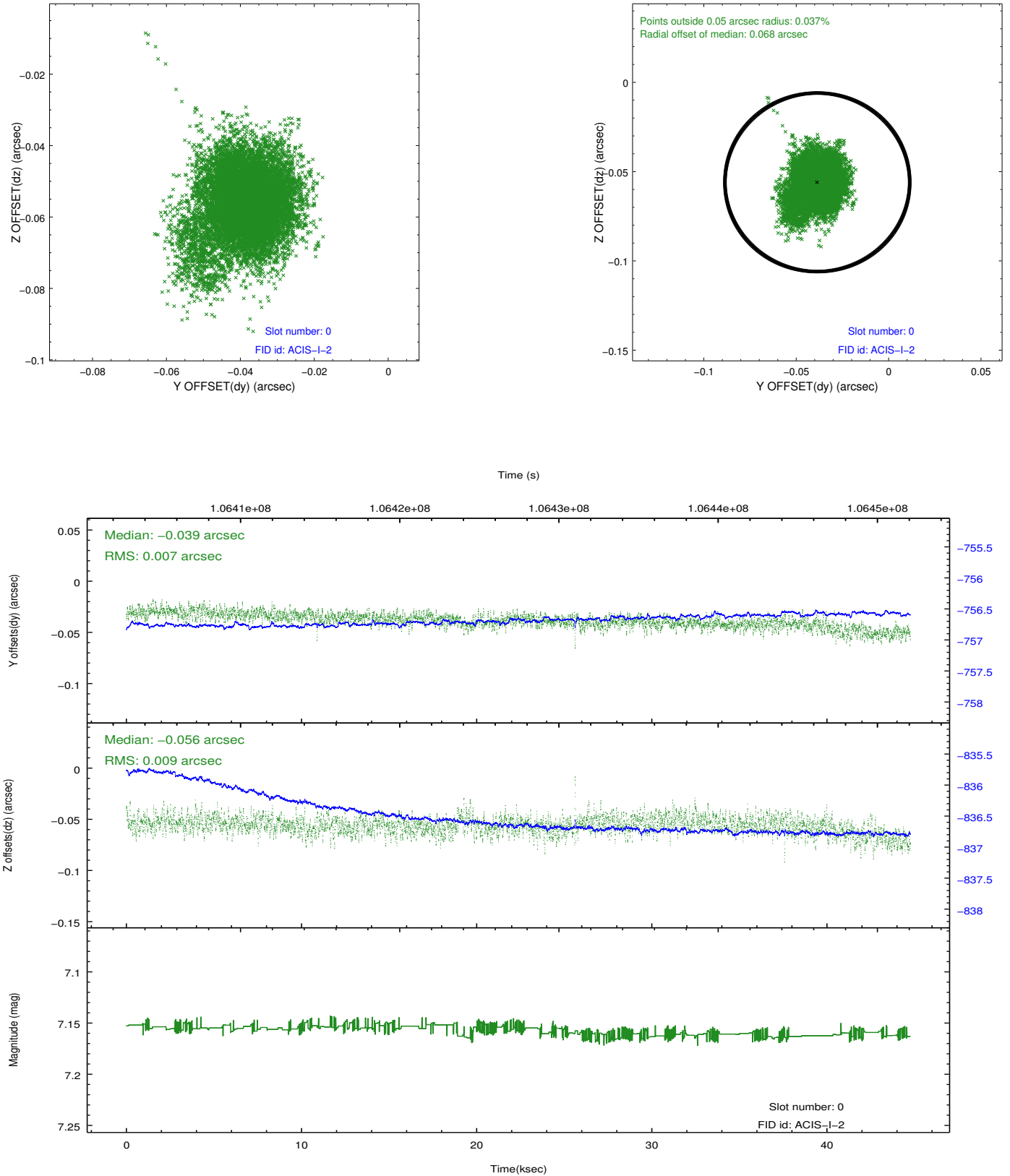


### 2.4.5 Slot 7

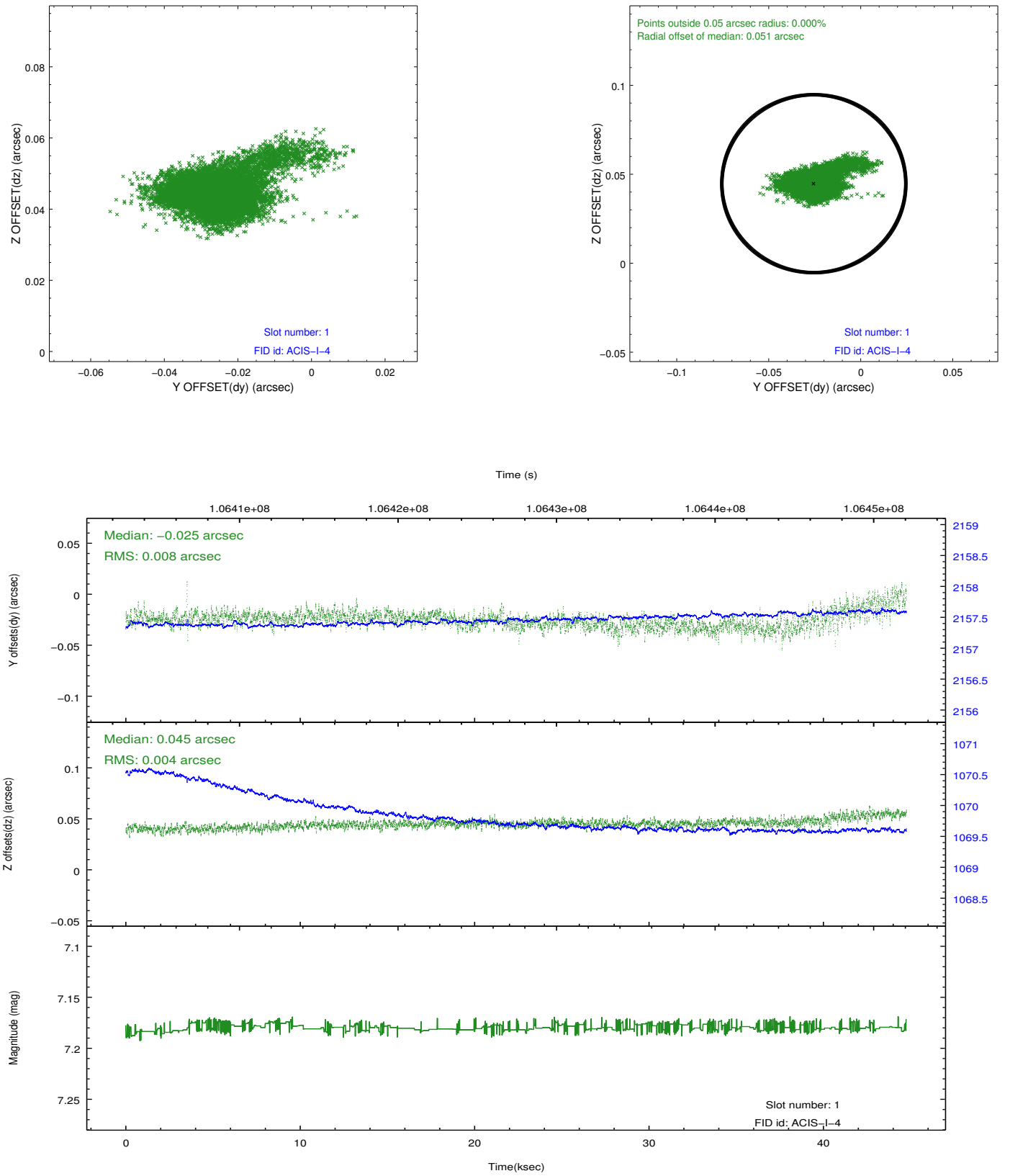


## 2.5 FID Slots

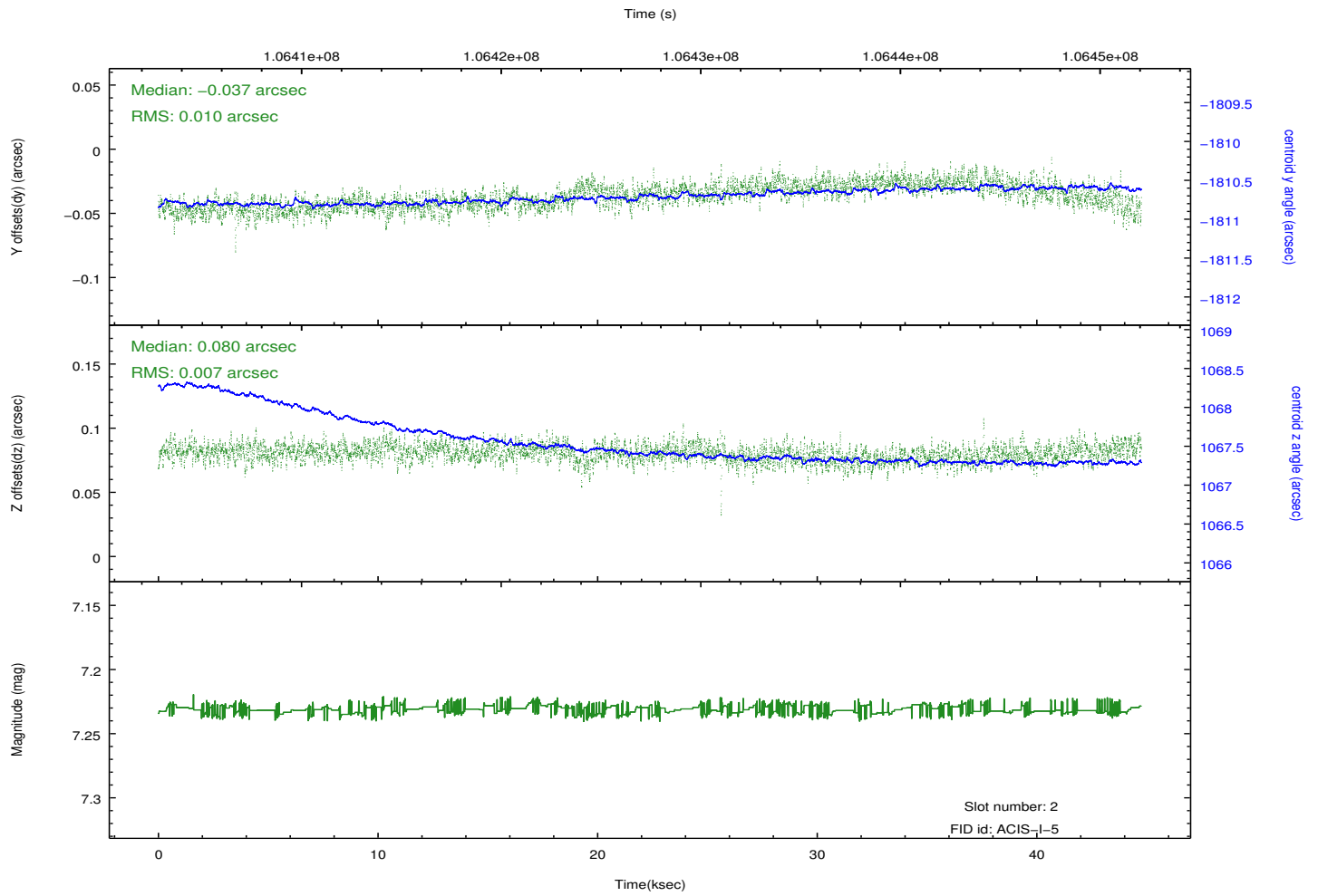
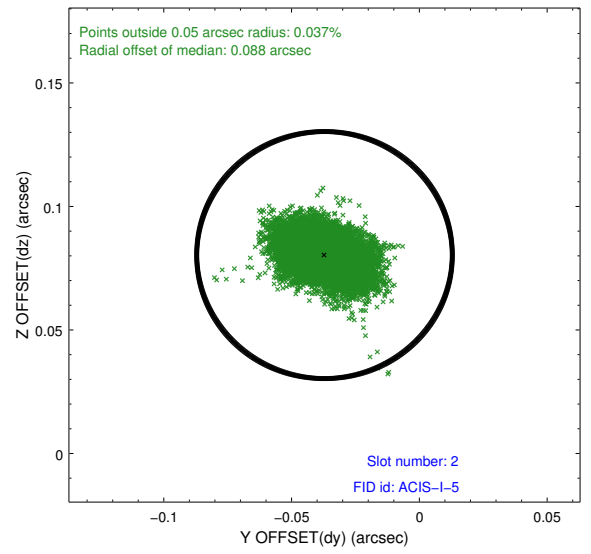
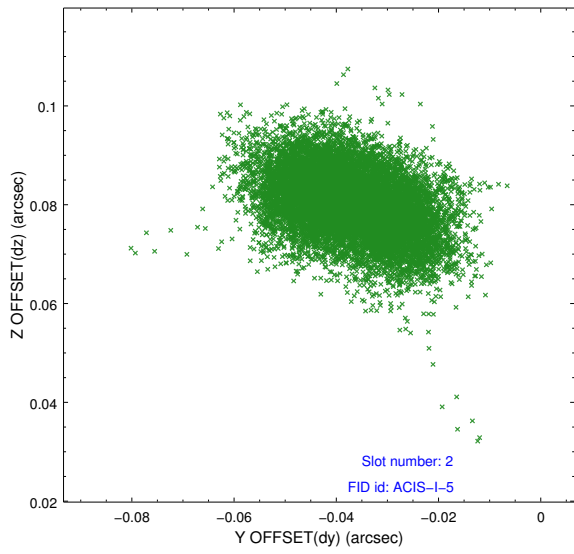
### 2.5.1 Slot 0



## 2.5.2 Slot 1



### 2.5.3 Slot 2



## A Summary

### A.1 Status

V&V Scientist	Jen Lauer
V&V Date (YYYY-MM-DD)	2012.09.21
V&V Edition	1
V&V Disposition and Status	OK
V&V Charge Time	44.281

### A.2 Comments