

V&V Reference Report

L2 ASCDS Version : 8.4.5

Observation 1877 - L2 Version 3
Chandra X-Ray Center

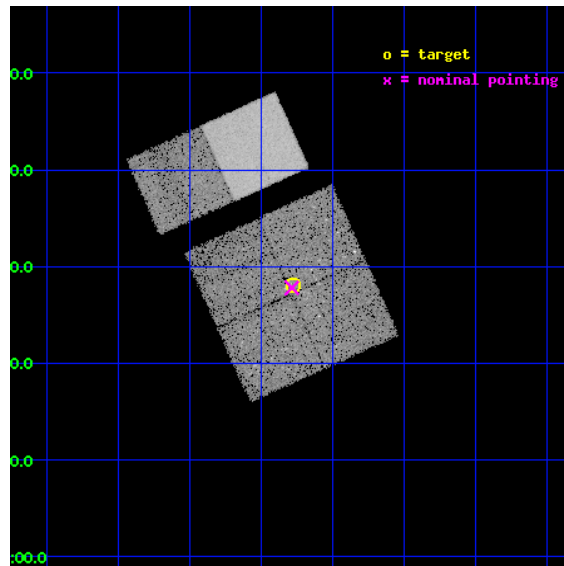
L2 Processing Date : Sep 6 2012

Contents

1	Front	2
2	OBI	3
2.1	OBI	3
2.1.1	Images	3
2.1.2	Bias	3
2.1.3	Parameters	4
2.1.4	Events	4
2.2	Compared Parameters	5
2.3	Aspect	6
2.4	Star Slots	9
2.4.1	Slot 3	9
2.4.2	Slot 4	10
2.4.3	Slot 5	11
2.4.4	Slot 6	12
2.4.5	Slot 7	13
2.5	FID Slots	14
2.5.1	Slot 0	14
2.5.2	Slot 1	15
2.5.3	Slot 2	16
A	Summary	17
A.1	Status	17
A.2	Comments	17

1 Front

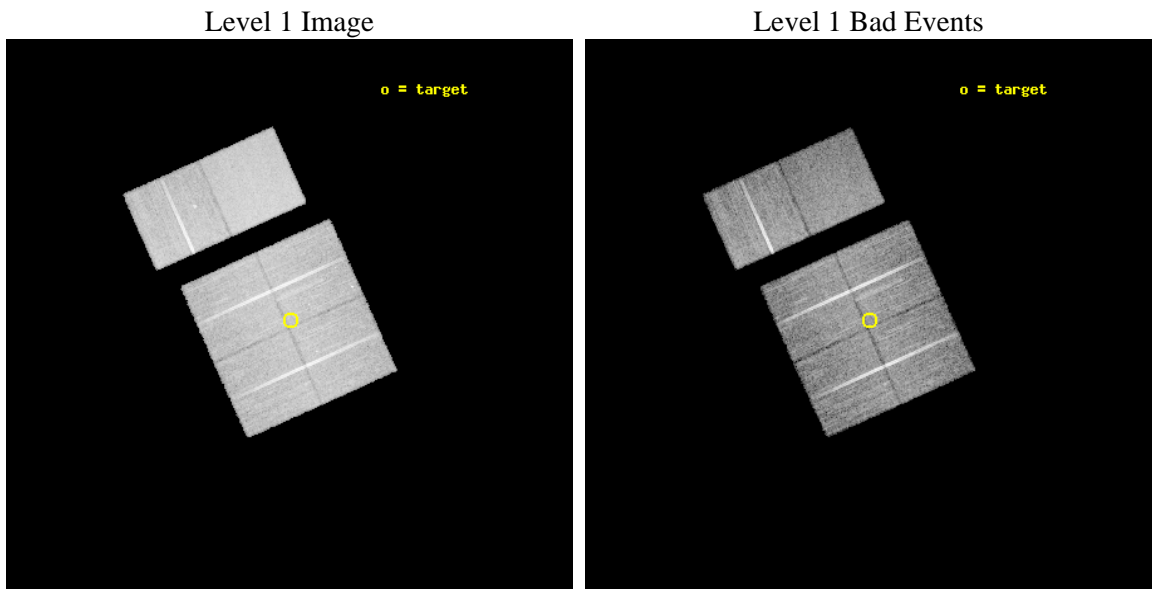
seq_num	200105	Sequence number
obs_id	1877	Observation id
title	STAR FORMATION IN THE ROSETTE MOLECULAR CLOUD	Proposal title
observer	Dr. Leisa Townsley	Principal investigator
object	ROSETTE FIELD 4	Source name
dtycycle	0	
cycle	P	events from which exps? Prim/Second/Both
ra_targ	98.56875	Observer's specified target RA [deg]
dec_targ	4.466944	Observer's specified target Dec [deg]
ra_nom	98.572002415456	Nominal RA [deg]
dec_nom	4.4634077419862	Nominal Dec [deg]
roll_nom	335.85322454236	Nominal Roll [deg]
revision	3	Processing version of data
ontime	19756.800018385	Sum of GTIs [s]
livetime	19506.627520436	Livetime [s]
ontime0	19756.800018385	Sum of GTIs [s]
ontime1	19756.800018385	Sum of GTIs [s]
ontime2	19756.800018385	Sum of GTIs [s]
ontime3	19756.800018385	Sum of GTIs [s]
ontime6	19753.559038147	Sum of GTIs [s]
ontime7	19756.800018385	Sum of GTIs [s]
l2events	119461	Number of level 2 events



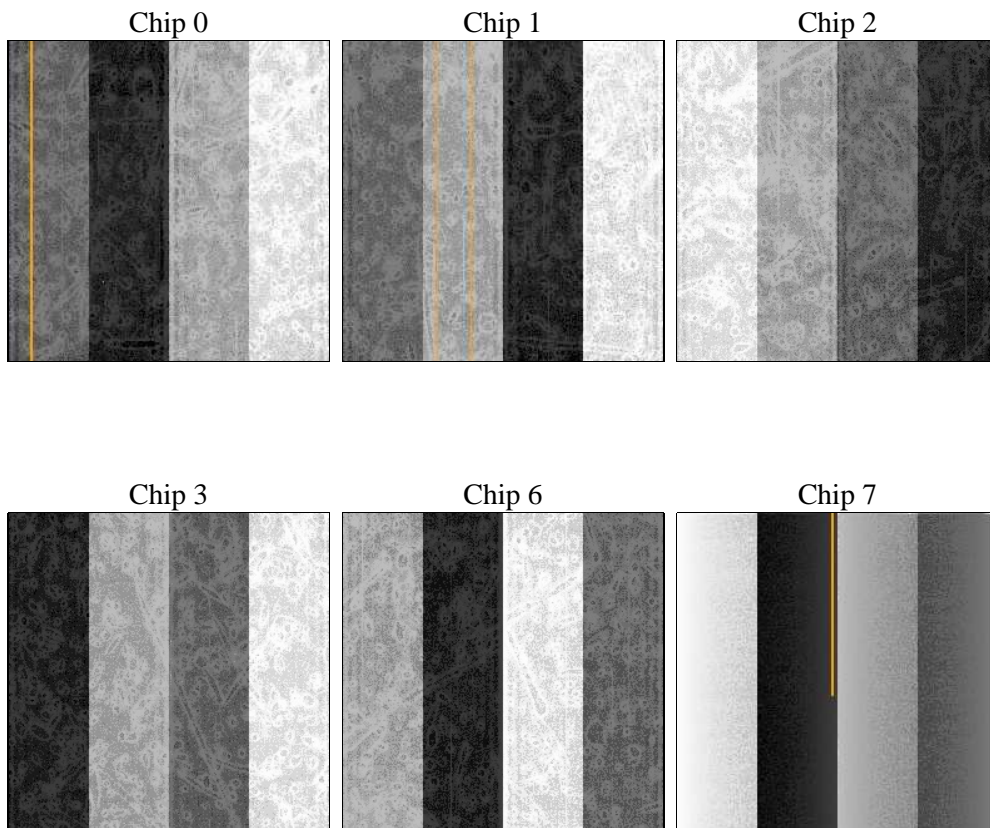
2 OBI

2.1 OBI

2.1.1 Images



2.1.2 Bias



2.1.3 Parameters

obi_num	0	Obi number	sched_exp_time	20000.000000	[s] Scheduled observation exposure time
ascdsver	8.4.5	Processing system revision	ontime	19756.800018385	Sum of GTIs [s]
caldbver	4.5.1.1	 	ontime0	19756.800018385	Sum of GTIs [s]
date	2012-09-06T09:33:22	Date and time of file creation	ontime1	19756.800018385	Sum of GTIs [s]
revision	3	Processing version of data	ontime2	19756.800018385	Sum of GTIs [s]
			ontime3	19756.800018385	Sum of GTIs [s]
			ontime6	19753.559038147	Sum of GTIs [s]
			ontime7	19756.800018385	Sum of GTIs [s]
			l1events	730170	Number of level 1 events

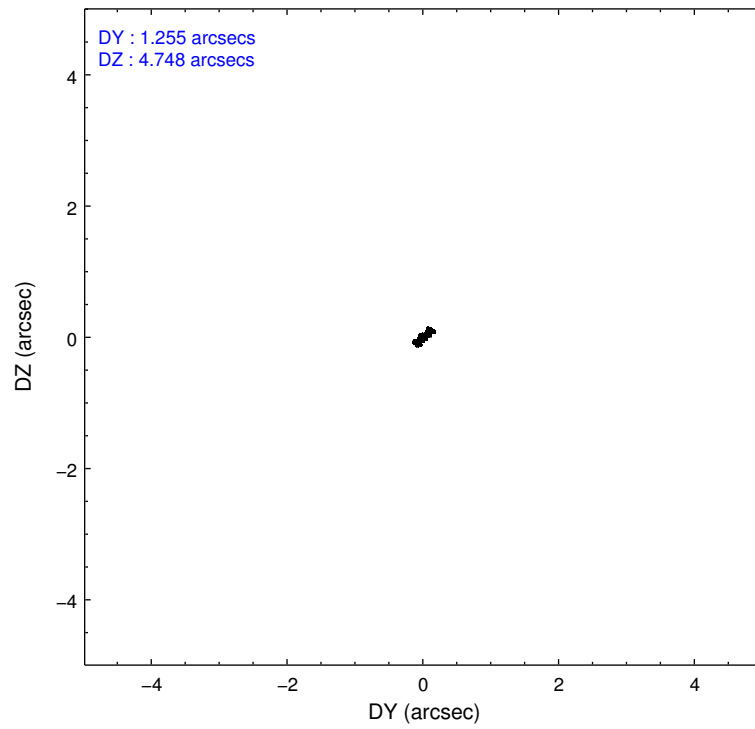
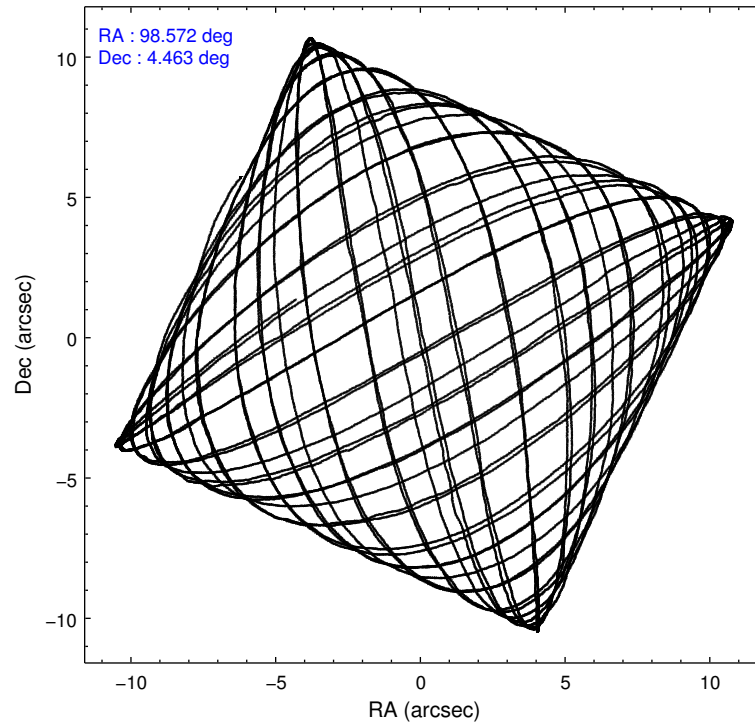
2.1.4 Events

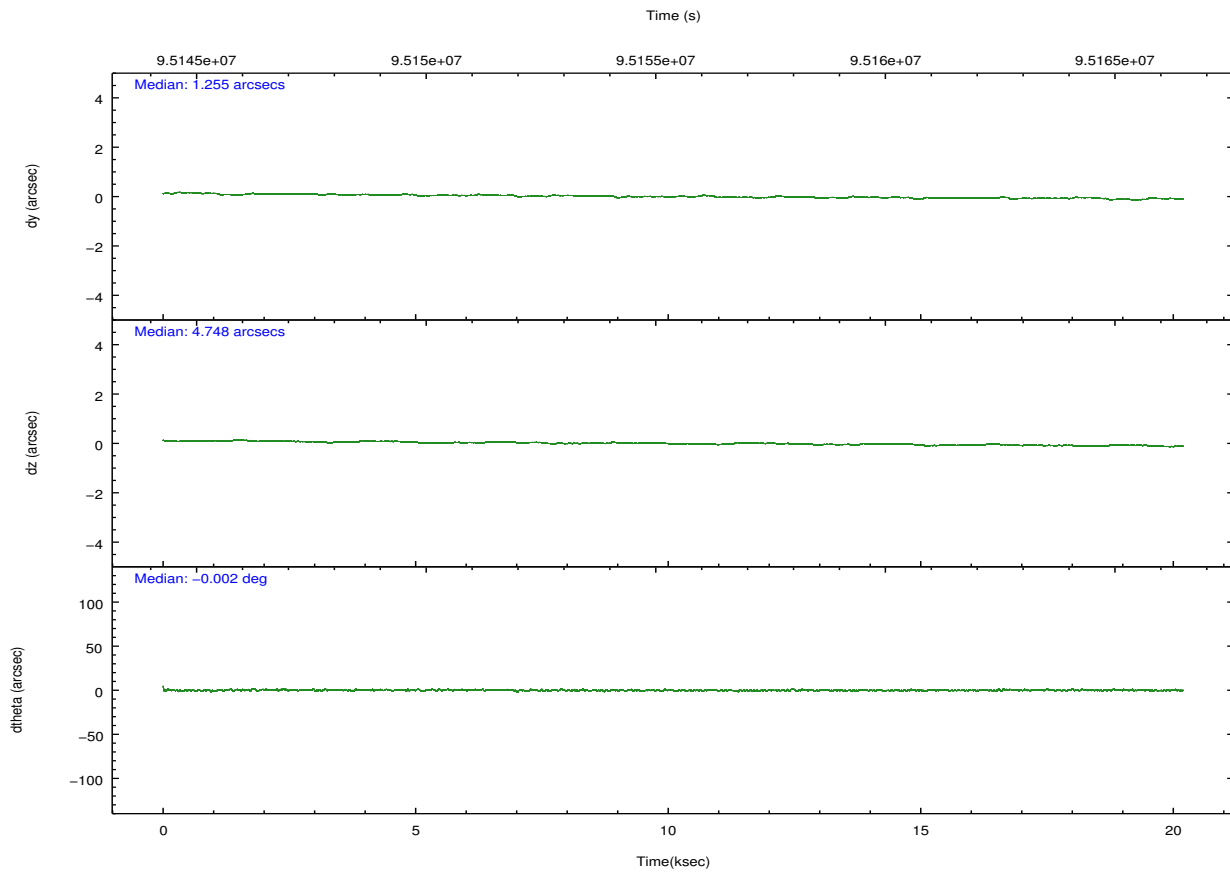
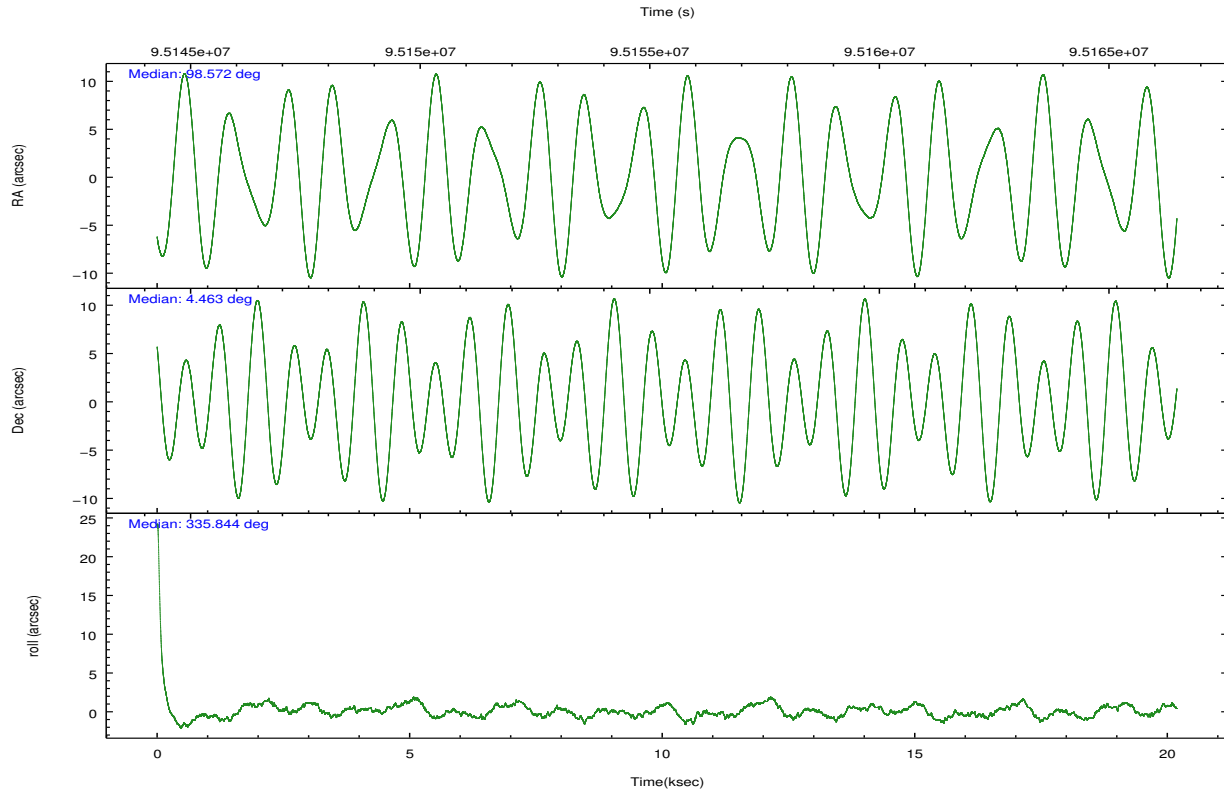
	ccd 0	ccd 1	ccd 2	ccd 3	ccd 6	ccd 7		ccd 0	ccd 1	ccd 2	ccd 3	ccd 6	ccd 7
level 1 events	109223	111868	116499	119841	124167	148572	grade 0 events	6584	6288	5439	6490	5904	5577
rejected events	94459	97024	103442	105606	110076	87714		6%	5%	4%	5%	4%	3%
rejected %	86%	86%	88%	88%	88%	59%	grade 1 events	70	50	38	73	63	145
								0%	0%	0%	0%	0%	0%
							grade 2 events	3033	2884	2800	2752	2851	11853
								2%	2%	2%	2%	2%	7%
							grade 3 events	1427	1501	1272	1316	1342	5558
								1%	1%	1%	1%	1%	3%
							grade 4 events	1374	1516	1274	1352	1266	5500
								1%	1%	1%	1%	1%	3%
							grade 5 events	4155	4450	3958	4431	5002	14210
								3%	3%	3%	3%	4%	9%
							grade 6 events	2347	2660	2274	2331	2731	32388
								2%	2%	1%	1%	2%	21%
							grade 7 events	90233	92519	99444	101096	105008	73341
								82%	82%	85%	84%	84%	49%

2.2 Compared Parameters

Parameter	Planned	Actual	Parameter	Planned	Actual
Instrument	ACIS	ACIS	Obspar format version number	7	7
Detector	ACIS-012367	ACIS-012367	Obspar file type	PREDICTED	ACTUAL
Grating	NONE	NONE	Obspar update status	NONE	UPDATED
Data mode	FAINT	FAINT	Number of optional ACIS chips dropped	0	0
Observation mode	POINTING	POINTING	On-chip summing requested	N	N
[deg] Pointing RA	98.544605	98.57200241545571	Subarray requested	NONE	NONE
[deg] Pointing Dec	4.460643	4.463407741986187	Alternating exposures requested	N	N
[deg] Pointing Roll	335.646660	335.8532245423567	[s] Primary exposure time	0.000000	3.2
[mm] SIM focus pos	-0.782348	-0.7809083437167272			
[mm] SIM defocus	0	0.001439871863259334			
[mm] SIM translation stage pos	-233.592463	-233.5874344608287			
[mm] SIM translation stage offset	0	-0.005018542100998502			
[s] Observation start time (MET)	95145471.184000	95145095.293547			
Observation start date	2001-01-06T05:16:47	2001-01-06T05:11:35			
[s] Observation end time (MET)	95165471.184000	95166265.64435899			
Observation end date	2001-01-06T10:50:07	2001-01-06T11:04:25			
Read mode	TIMED	TIMED			

2.3 Aspect



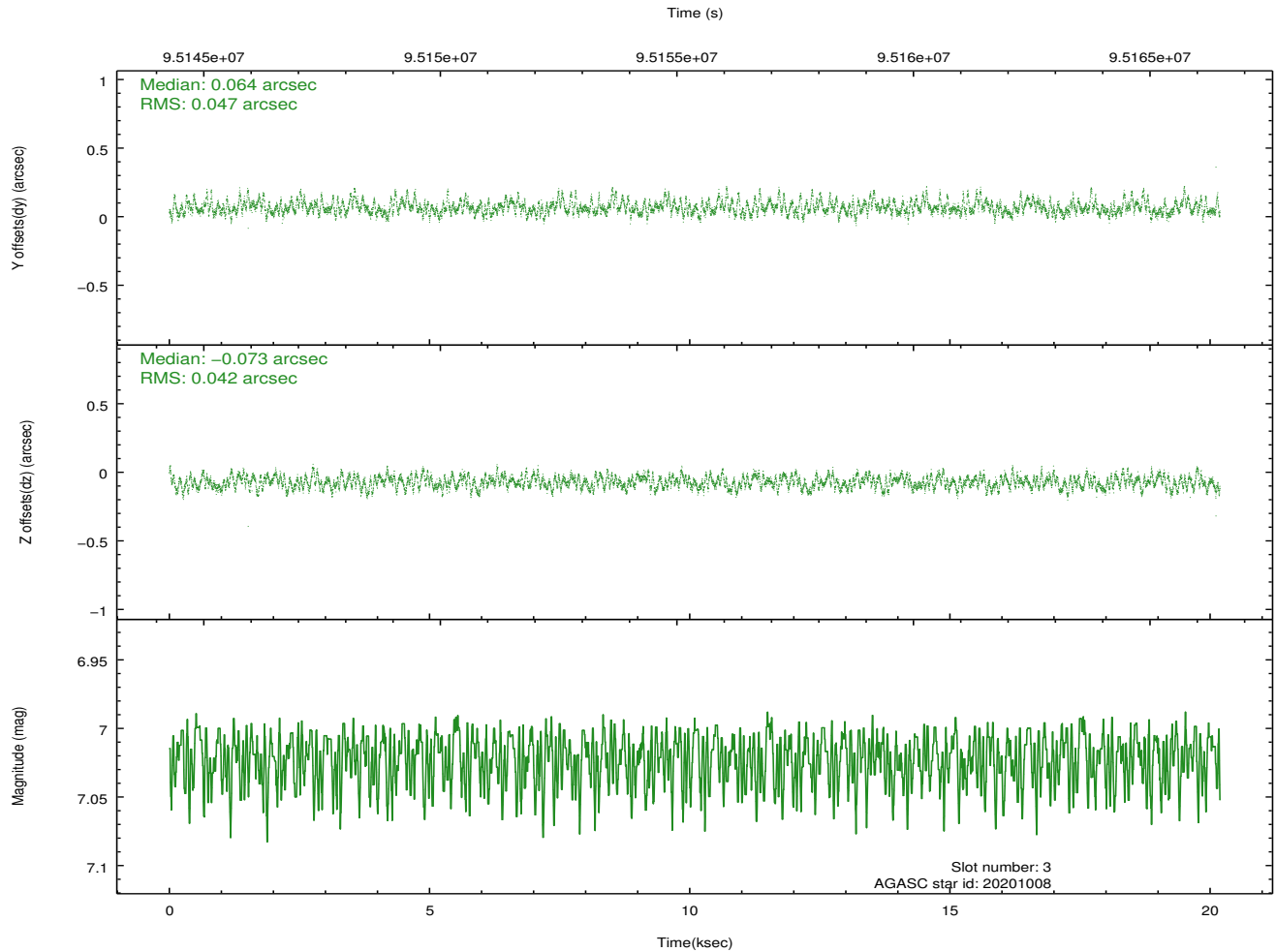
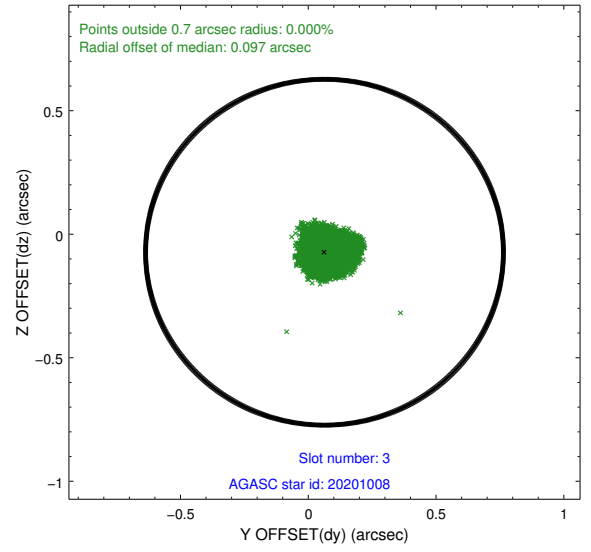
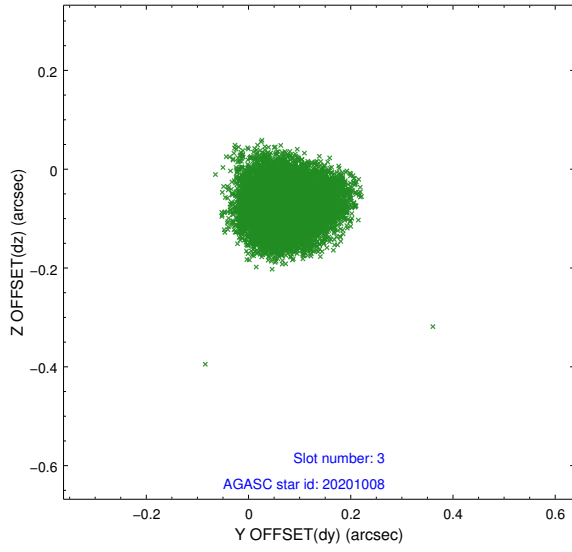


Slot Statistics

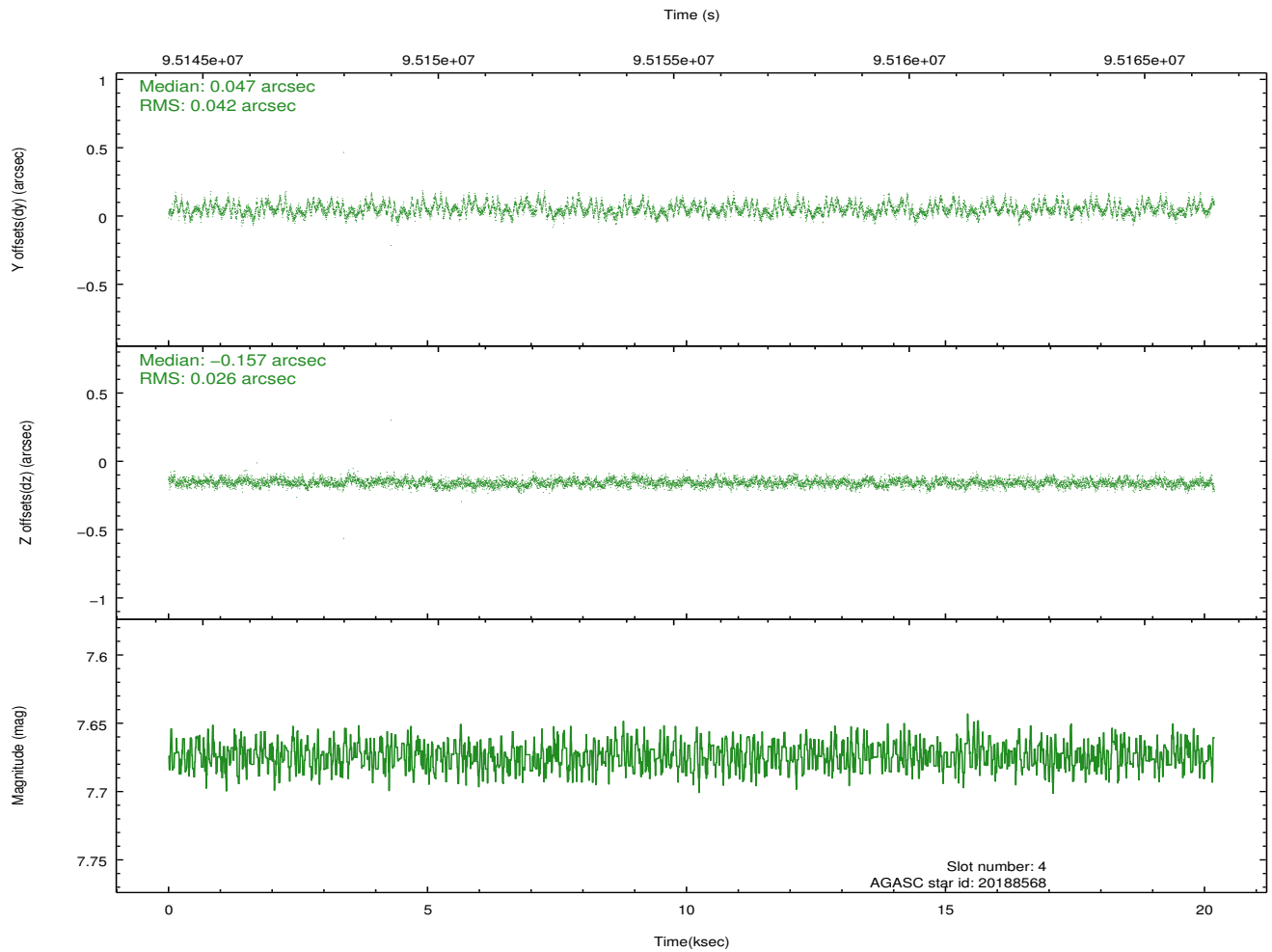
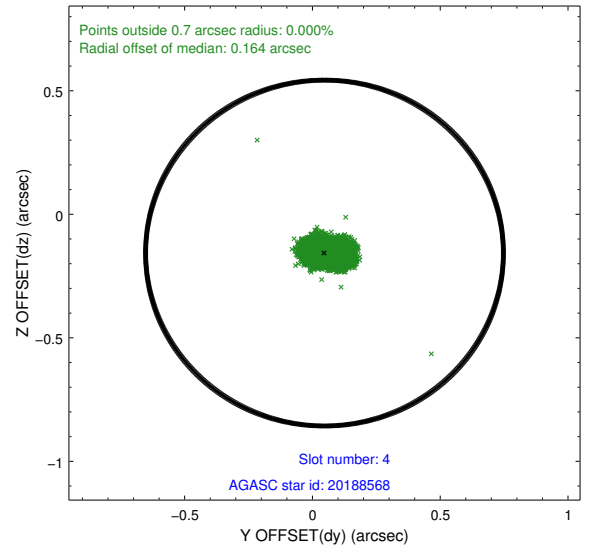
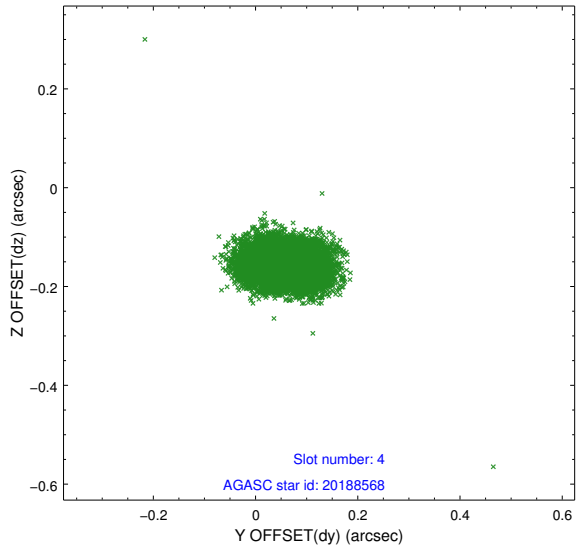
slot	status	id	mag	n_pts	med_dy	med_dz	dr1	dr2	ra	dec	mean_y	mean_z
0	FID	ACIS-I-3	7.45	4924	0.000	0.191	0.008	0.014	0.000000	0.000000	56.00	-961.12
1	FID	ACIS-I-4	7.19	4924	-0.050	-0.073	0.007	0.011	0.000000	0.000000	2158.50	1071.54
2	FID	ACIS-I-5	7.23	4925	-0.049	-0.048	0.007	0.012	0.000000	0.000000	-1809.23	1069.64
3	GUIDE	20201008	7.02	9848	0.064	-0.073	0.067	0.108	99.000440	4.498035	1434.54	797.82
4	GUIDE	20188568	7.67	9848	0.047	-0.157	0.051	0.088	98.433538	5.215985	-1484.39	2312.80
5	GUIDE	20203472	7.85	9847	-0.064	0.109	0.042	0.068	98.653479	4.344261	528.54	-220.13
6	GUIDE	20188448	8.36	9849	-0.012	0.067	0.068	0.111	98.813908	3.968896	1611.21	-1213.56
7	GUIDE	20200352	8.70	9784	-0.041	0.058	0.061	0.100	98.276155	4.071797	-300.80	-1672.76

2.4 Star Slots

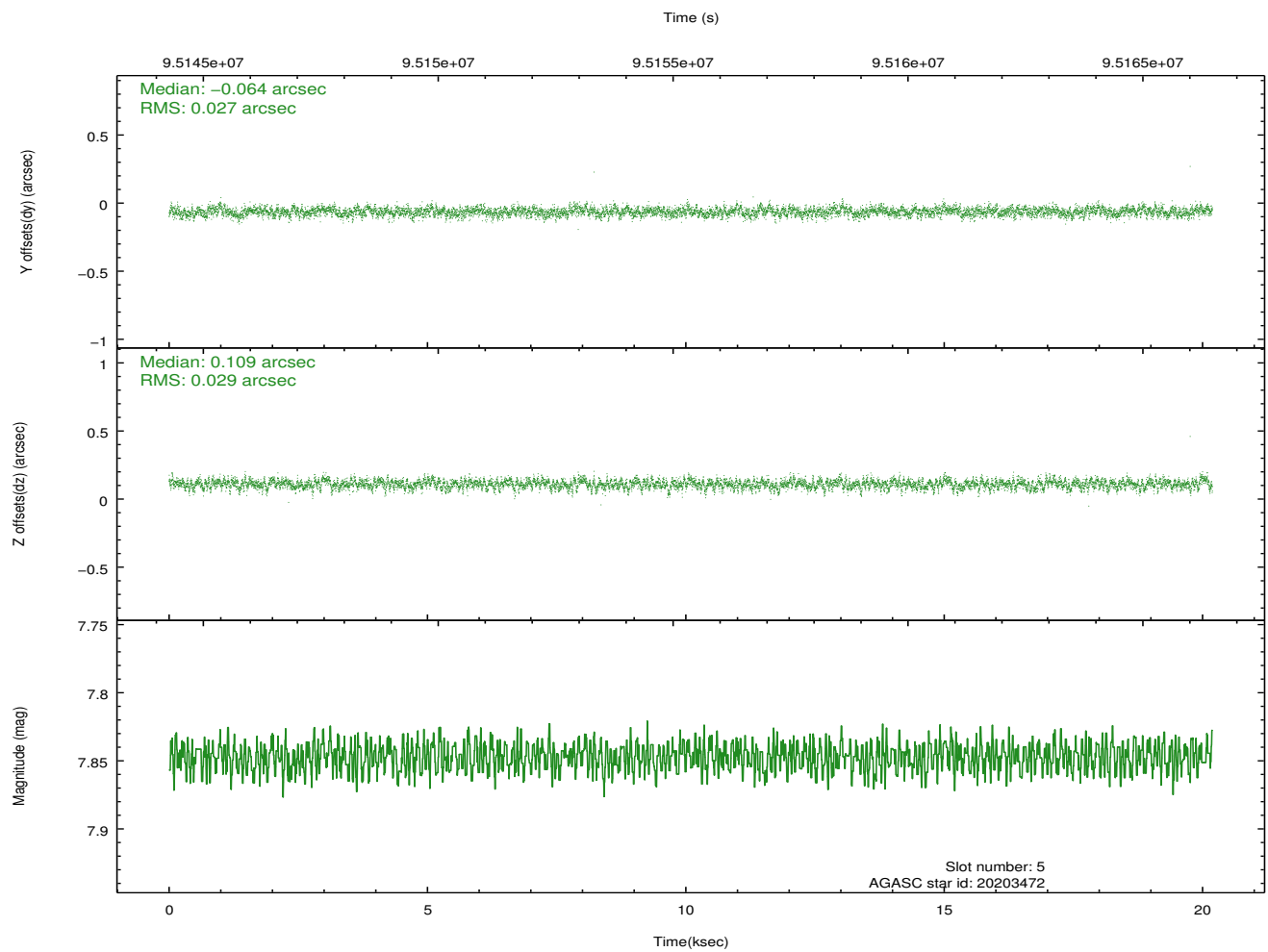
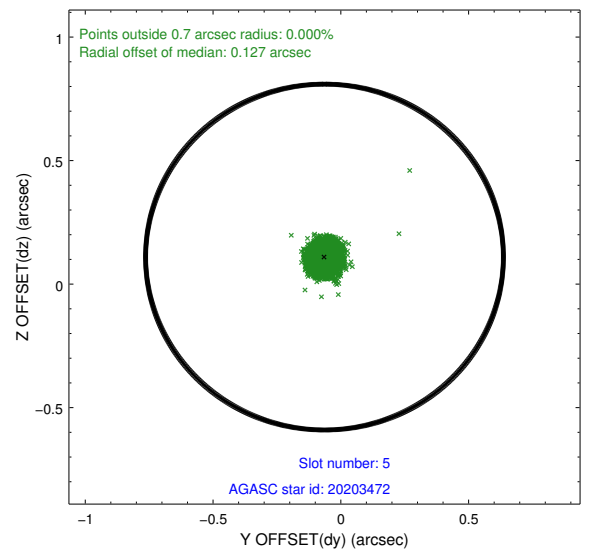
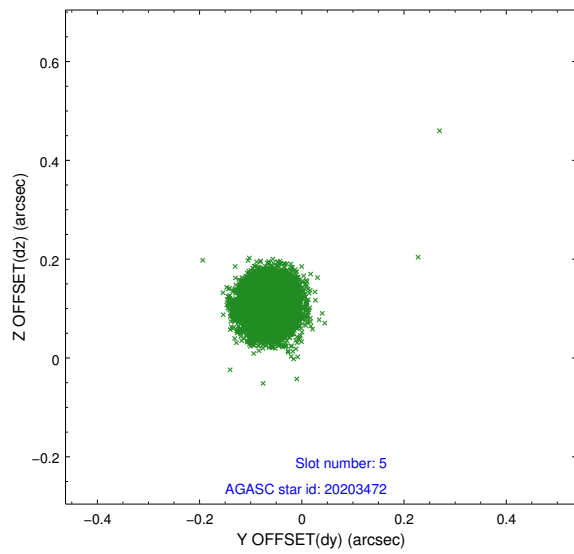
2.4.1 Slot 3



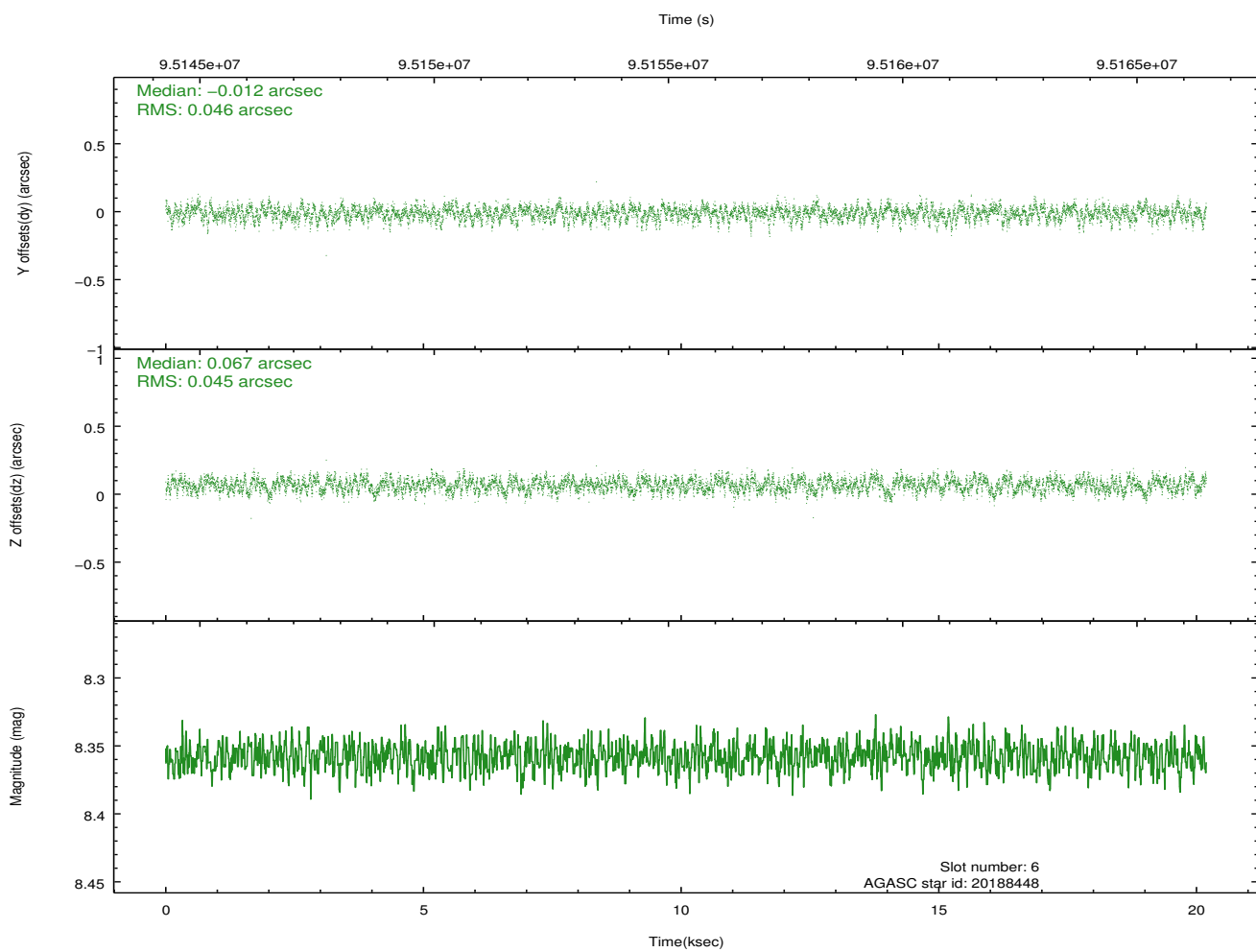
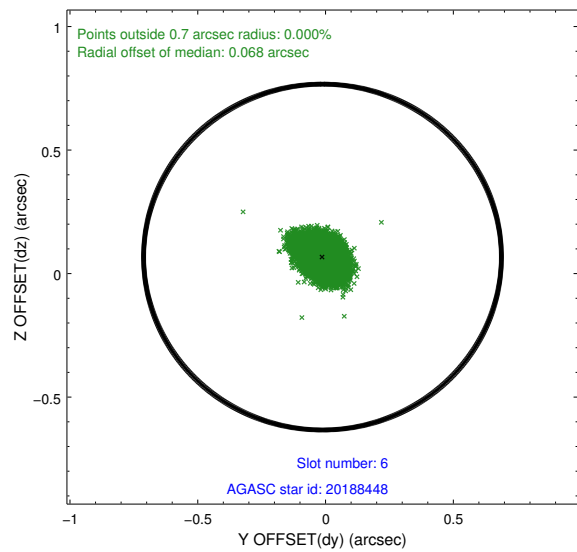
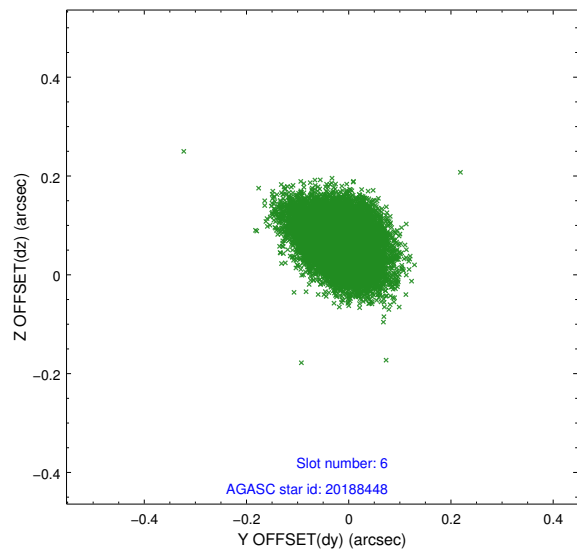
2.4.2 Slot 4



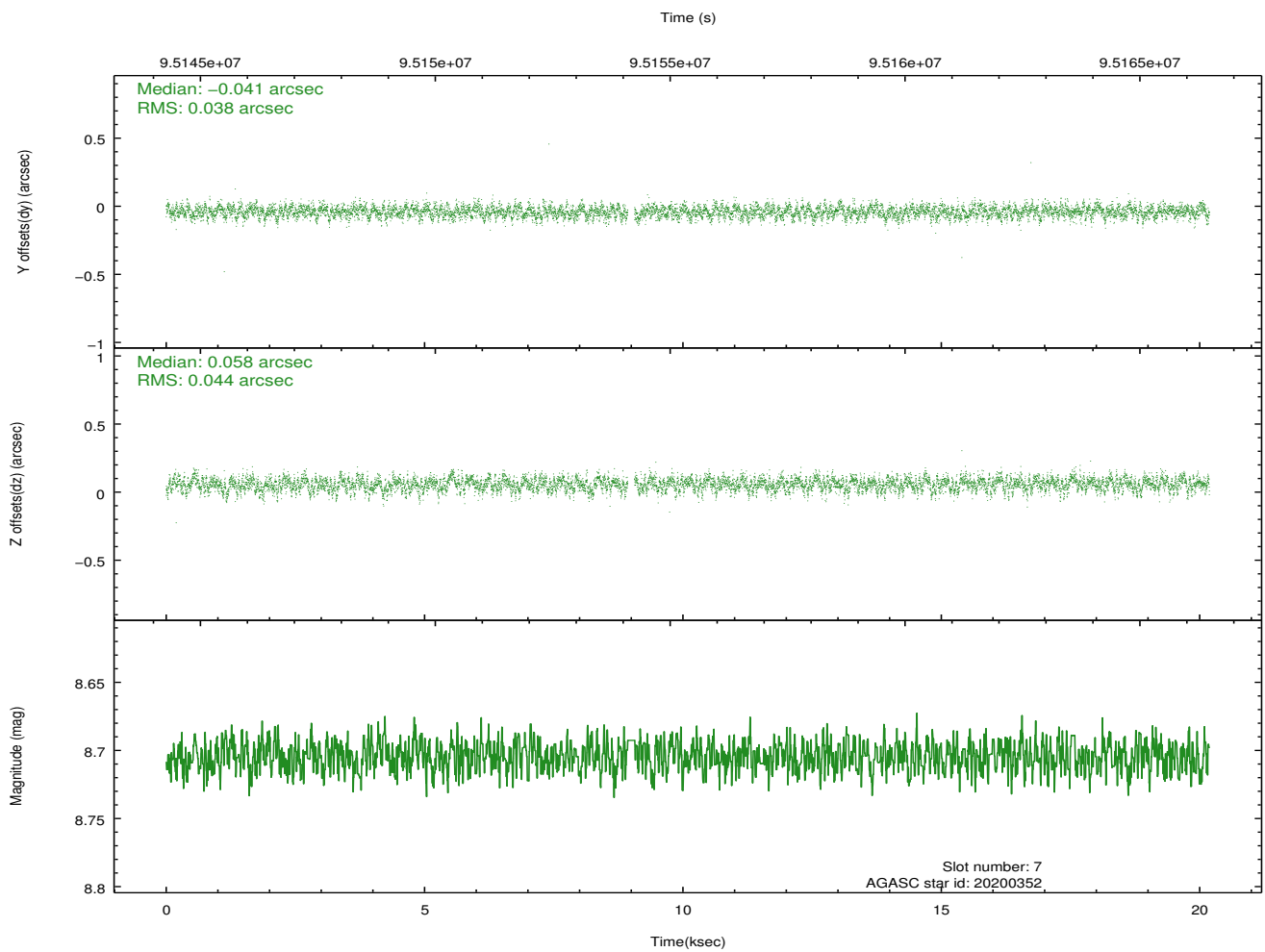
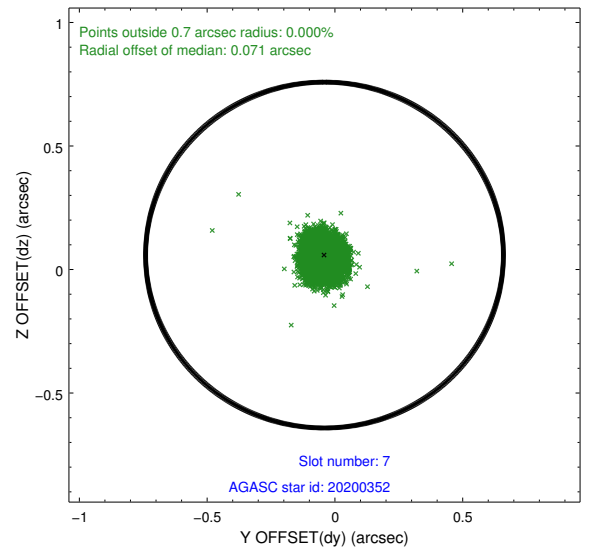
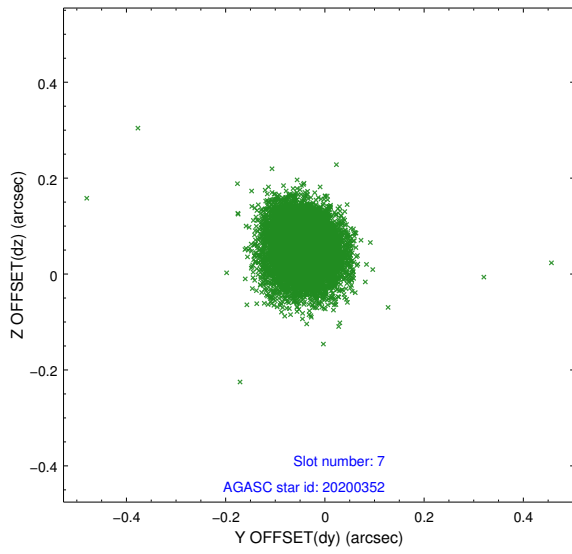
2.4.3 Slot 5



2.4.4 Slot 6

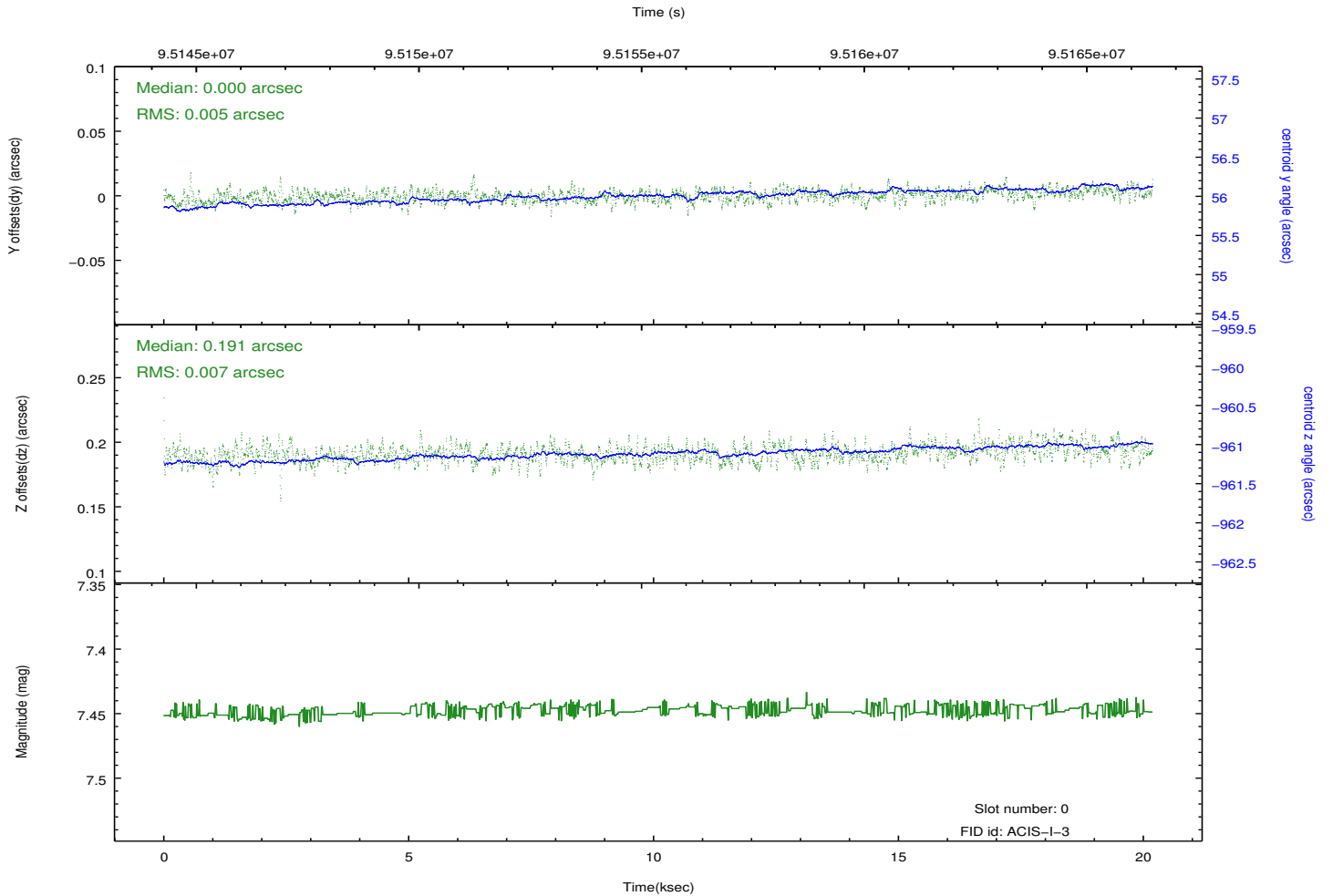
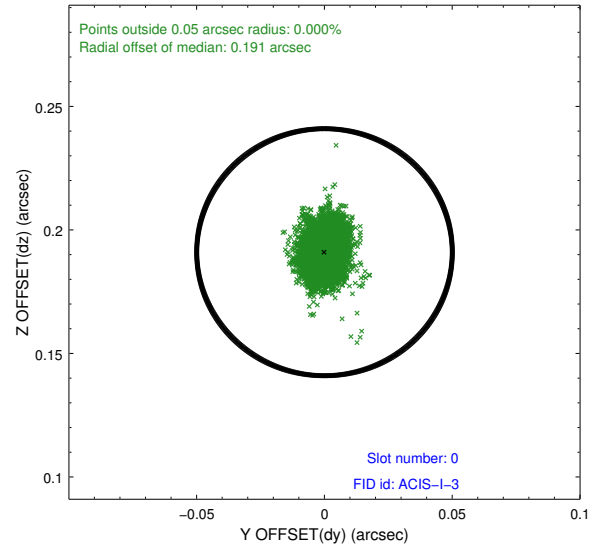
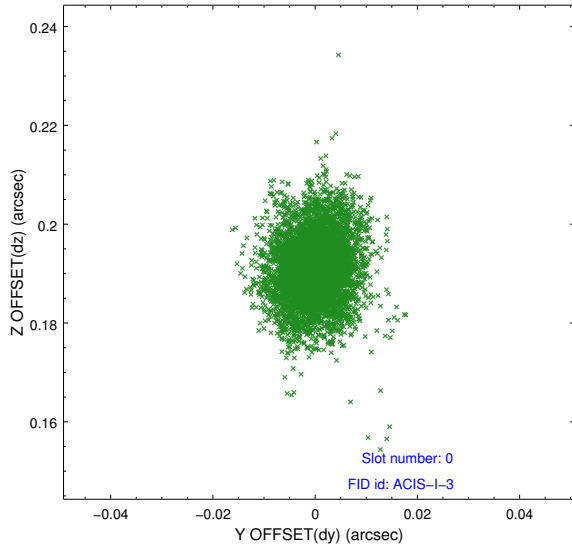


2.4.5 Slot 7

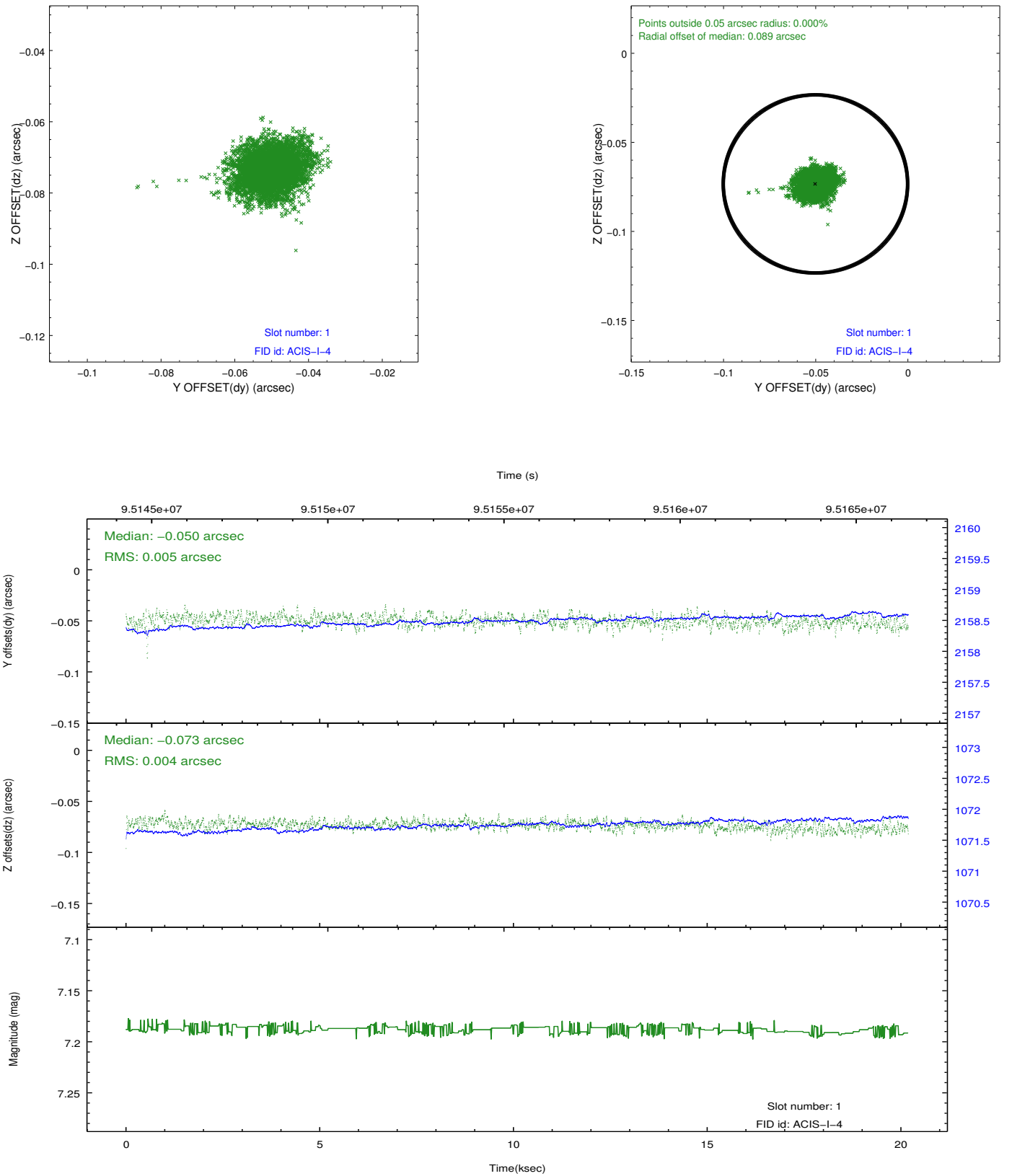


2.5 FID Slots

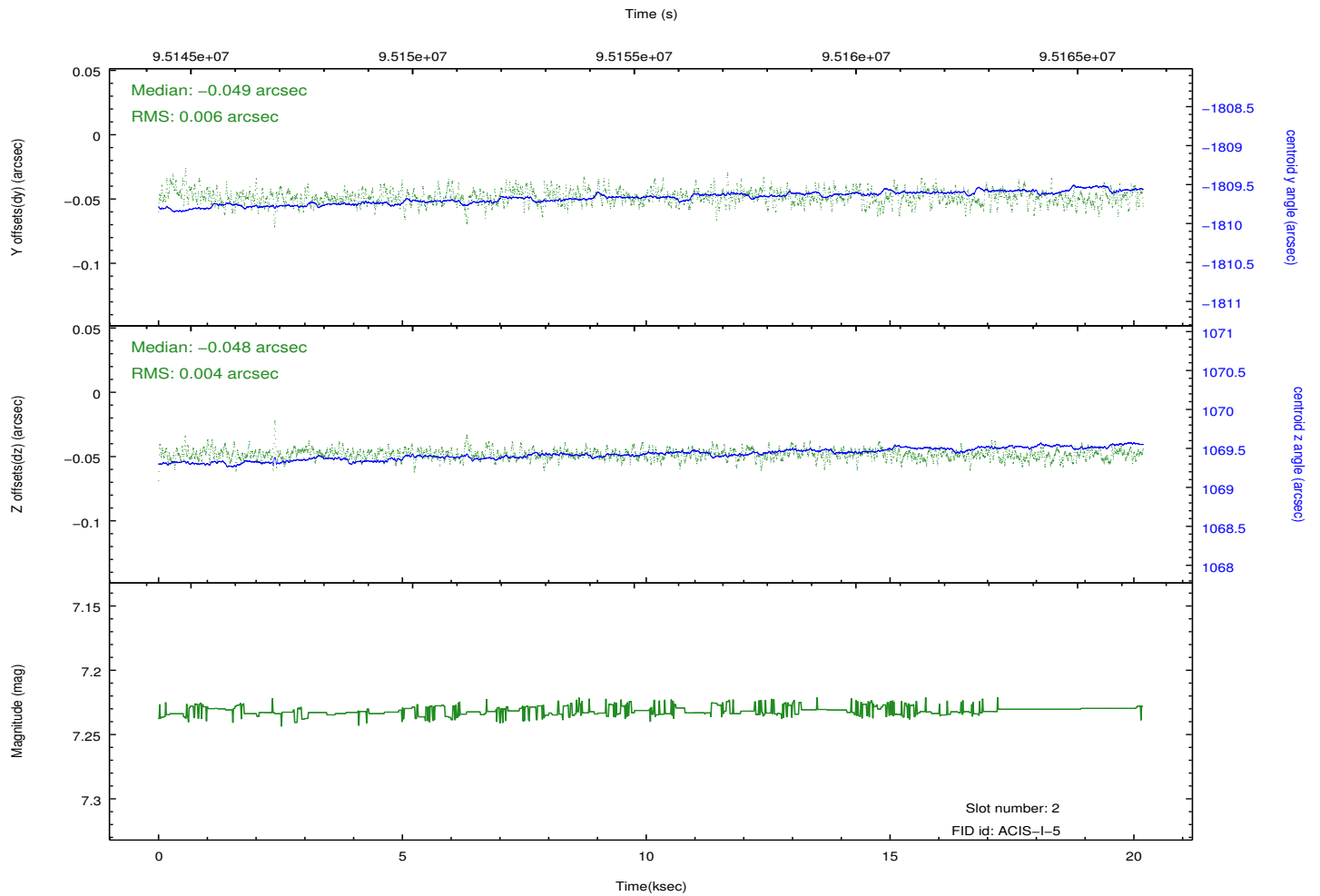
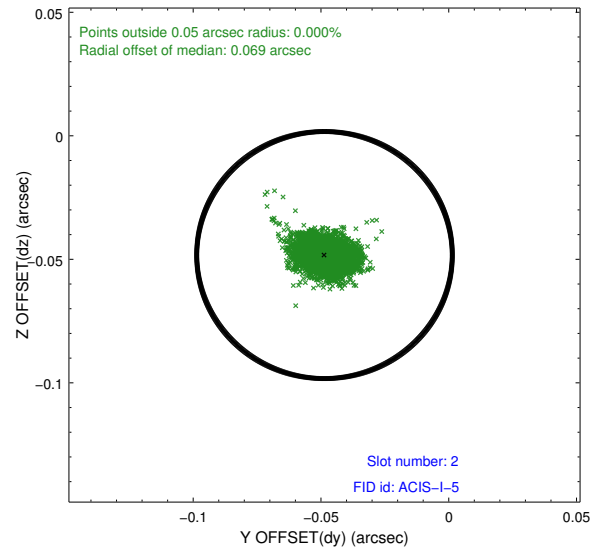
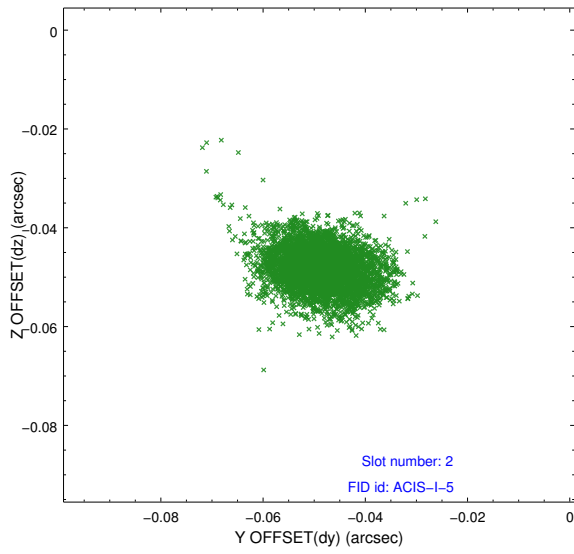
2.5.1 Slot 0



2.5.2 Slot 1



2.5.3 Slot 2



A Summary

A.1 Status

V&V Scientist	Jen Lauer
V&V Date (YYYY-MM-DD)	2012.09.14
V&V Edition	1
V&V Disposition and Status	OK
V&V Charge Time	19.76

A.2 Comments