

V&V Reference Report

L2 ASCDS Version : 8.4.5

Observation 2027 - L2 Version 3
Chandra X-Ray Center

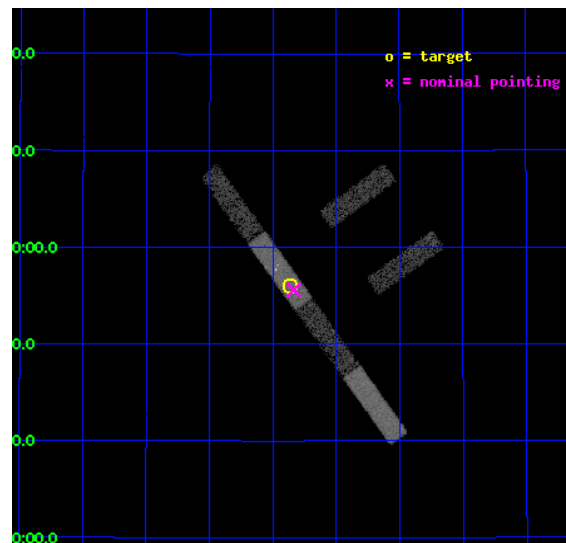
L2 Processing Date : Sep 17 2012

Contents

1	Front	2
2	OBI	3
2.1	OBI	3
2.1.1	Images	3
2.1.2	Bias	3
2.1.3	Parameters	4
2.1.4	Events	4
2.2	Compared Parameters	5
2.3	Aspect	6
2.4	Star Slots	9
2.4.1	Slot 3	9
2.4.2	Slot 4	10
2.4.3	Slot 5	11
2.4.4	Slot 6	12
2.4.5	Slot 7	13
2.5	FID Slots	14
2.5.1	Slot 0	14
2.5.2	Slot 1	15
2.5.3	Slot 2	16
A	Summary	17
A.1	Status	17
A.2	Comments	17

1 Front

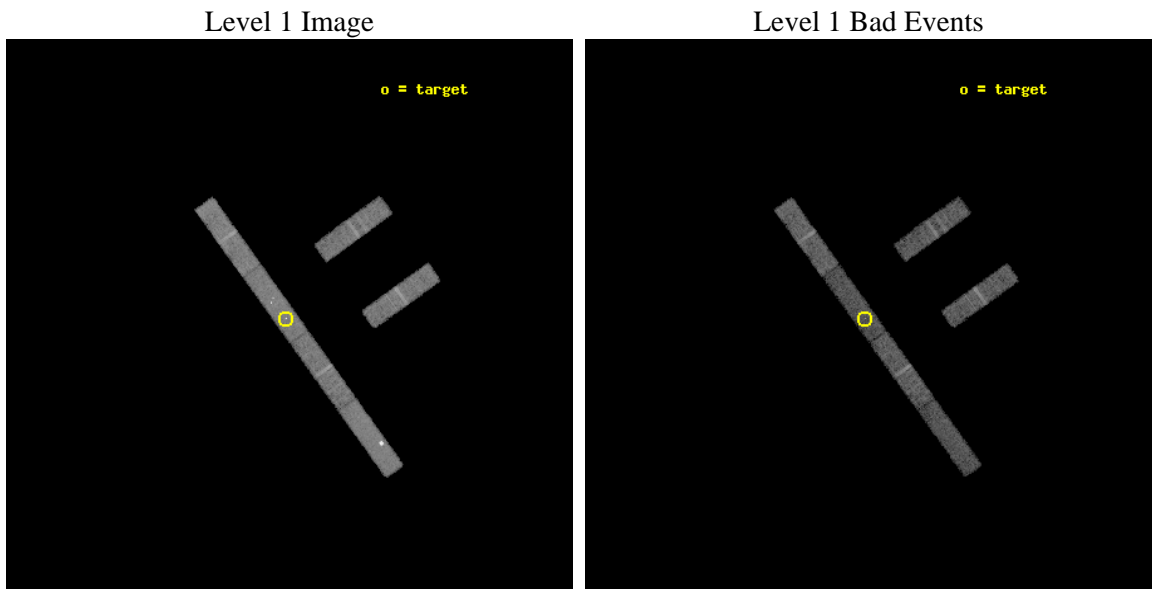
seq_num	600161	Sequence number
obs_id	2027	Observation id
title	PROBING THE NATURE OF SUPER-LUMINOUS X-RAY SOURCES IN NEARBY GALAXIES	Proposal title
observer	Dr Timothy Roberts	Principal investigator
object	NGC 4559 X-1	Source name
dtcycle	0	
cycle	P	events from which exps? Prim/Second/Both
ra_targ	188.966667	Observer's specified target RA [deg]
dec_targ	27.933611	Observer's specified target Dec [deg]
ra_nom	188.95870415822	Nominal RA [deg]
dec_nom	27.926826295217	Nominal Dec [deg]
roll_nom	234.23826266389	Nominal Roll [deg]
revision	3	Processing version of data
ontime	11106.699939817	Sum of GTIs [s]
livetime	10707.223176925	Livetime [s]
ontime2	11106.699939817	Sum of GTIs [s]
ontime3	11106.699939817	Sum of GTIs [s]
ontime5	11106.699939817	Sum of GTIs [s]
ontime6	11106.699939817	Sum of GTIs [s]
ontime7	11106.699939817	Sum of GTIs [s]
ontime8	11106.699939817	Sum of GTIs [s]
l2events	33874	Number of level 2 events



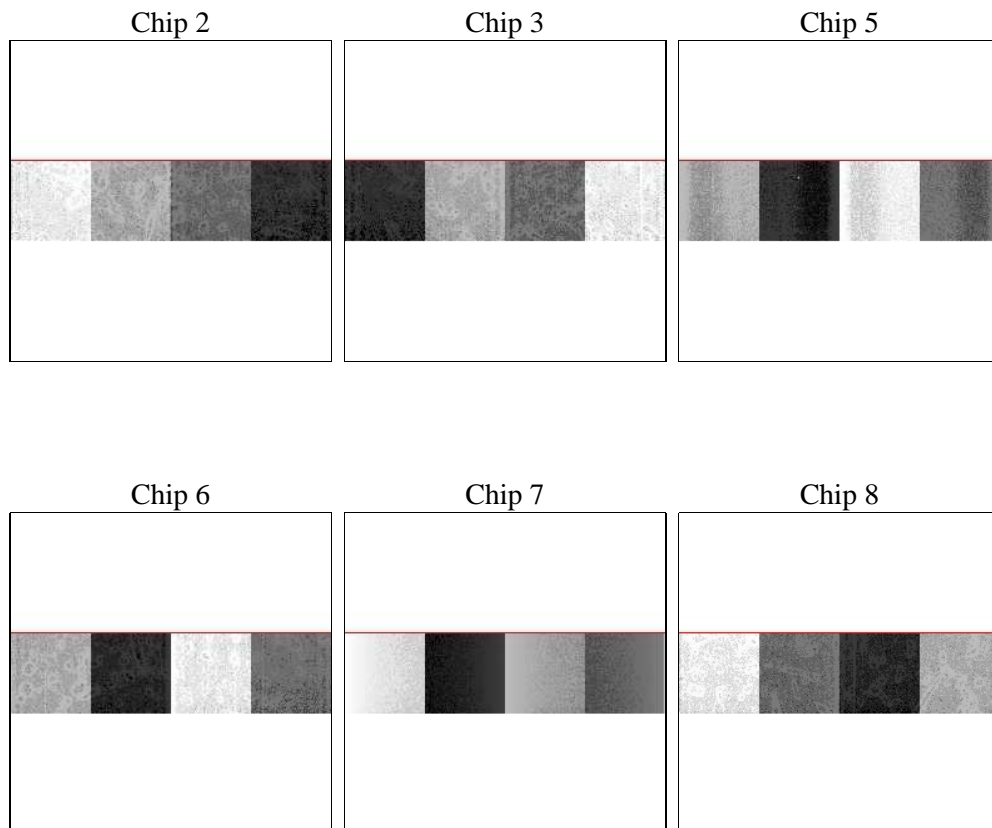
2 OBI

2.1 OBI

2.1.1 Images



2.1.2 Bias



2.1.3 Parameters

obi_num	0	Obi number	sched_exp_time	10700.000000	[s] Scheduled observation exposure time
ascdsver	8.4.5	Processing system revision	ontime	11106.699939817	Sum of GTIs [s]
caldbver	4.5.1.1	 	ontime2	11106.699939817	Sum of GTIs [s]
date	2012-09-17T18:23:46	Date and time of file creation	ontime3	11106.699939817	Sum of GTIs [s]
revision	3	Processing version of data	ontime5	11106.699939817	Sum of GTIs [s]
			ontime6	11106.699939817	Sum of GTIs [s]
			ontime7	11106.699939817	Sum of GTIs [s]
			ontime8	11106.699939817	Sum of GTIs [s]
			l1events	163307	Number of level 1 events

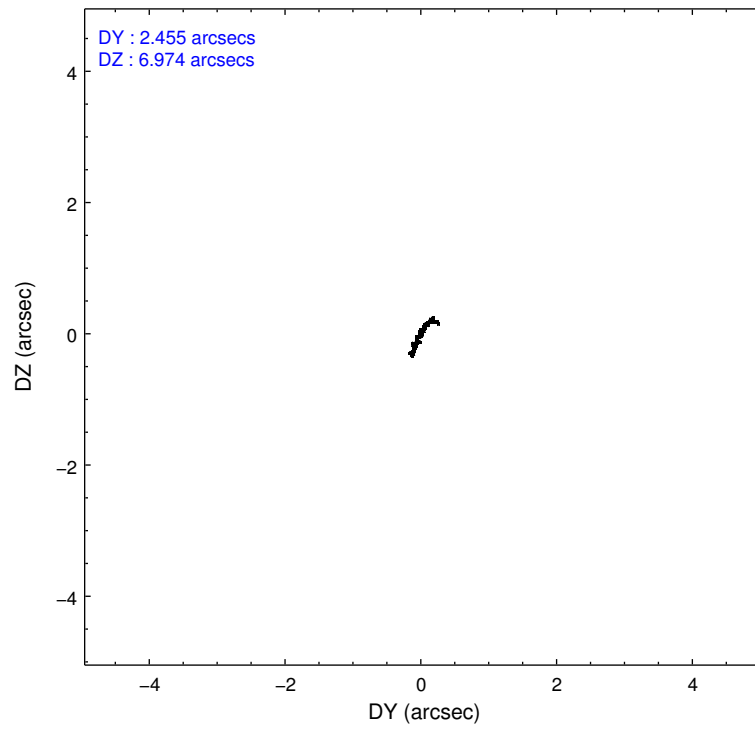
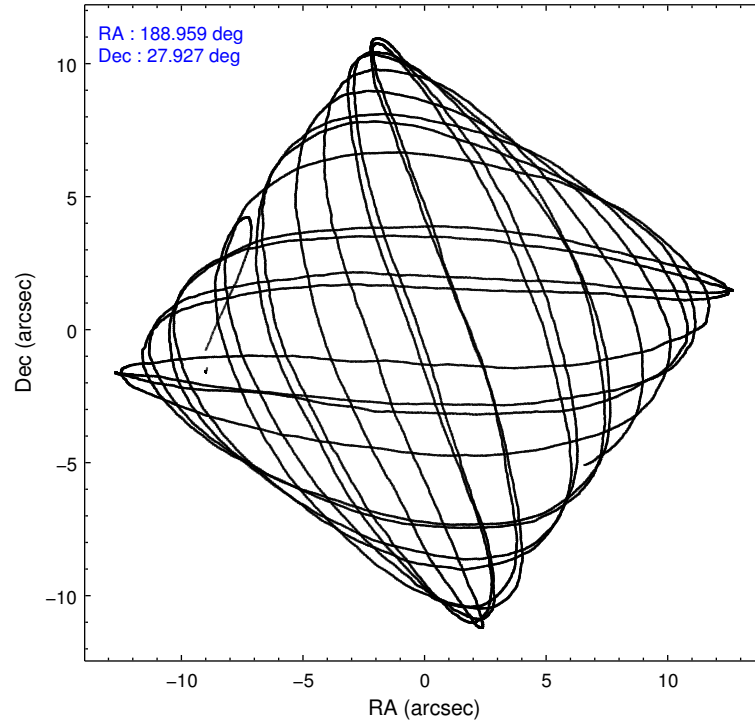
2.1.4 Events

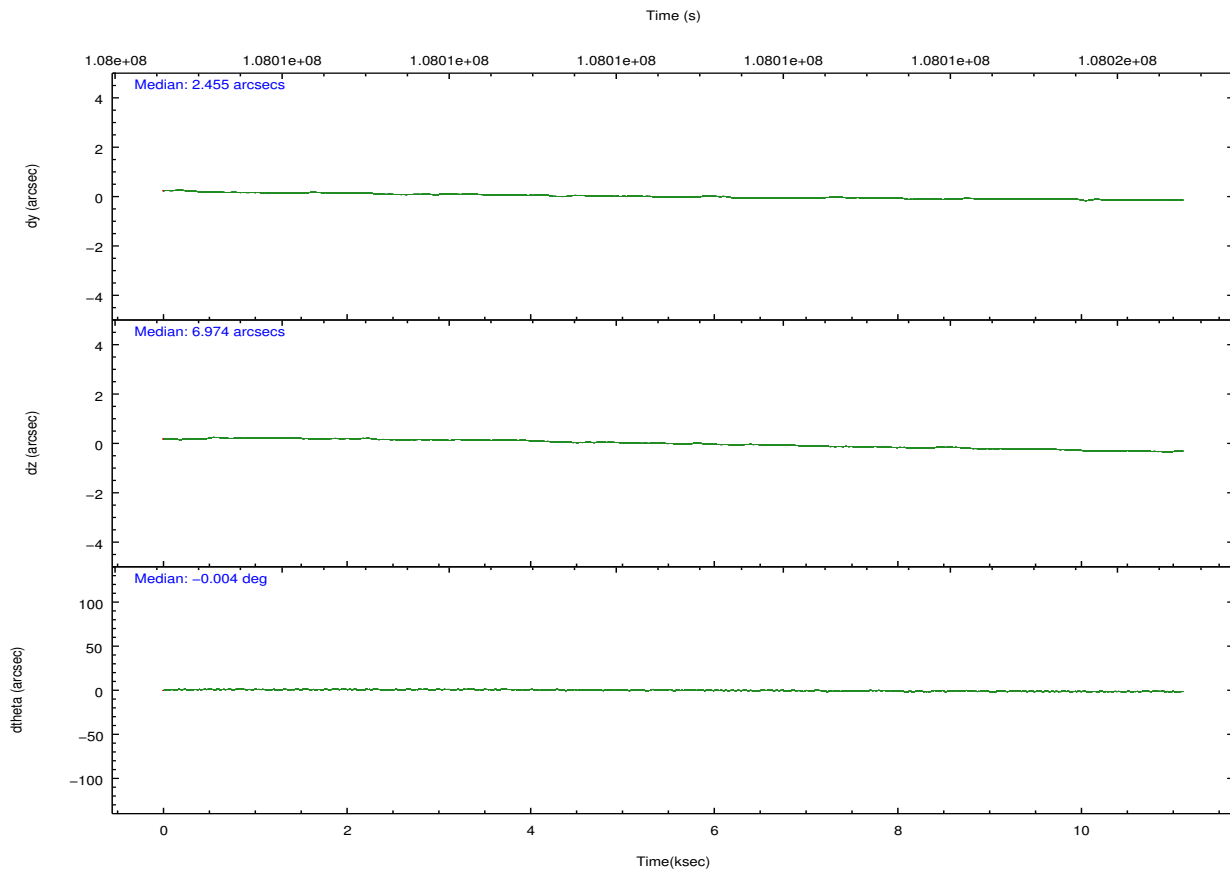
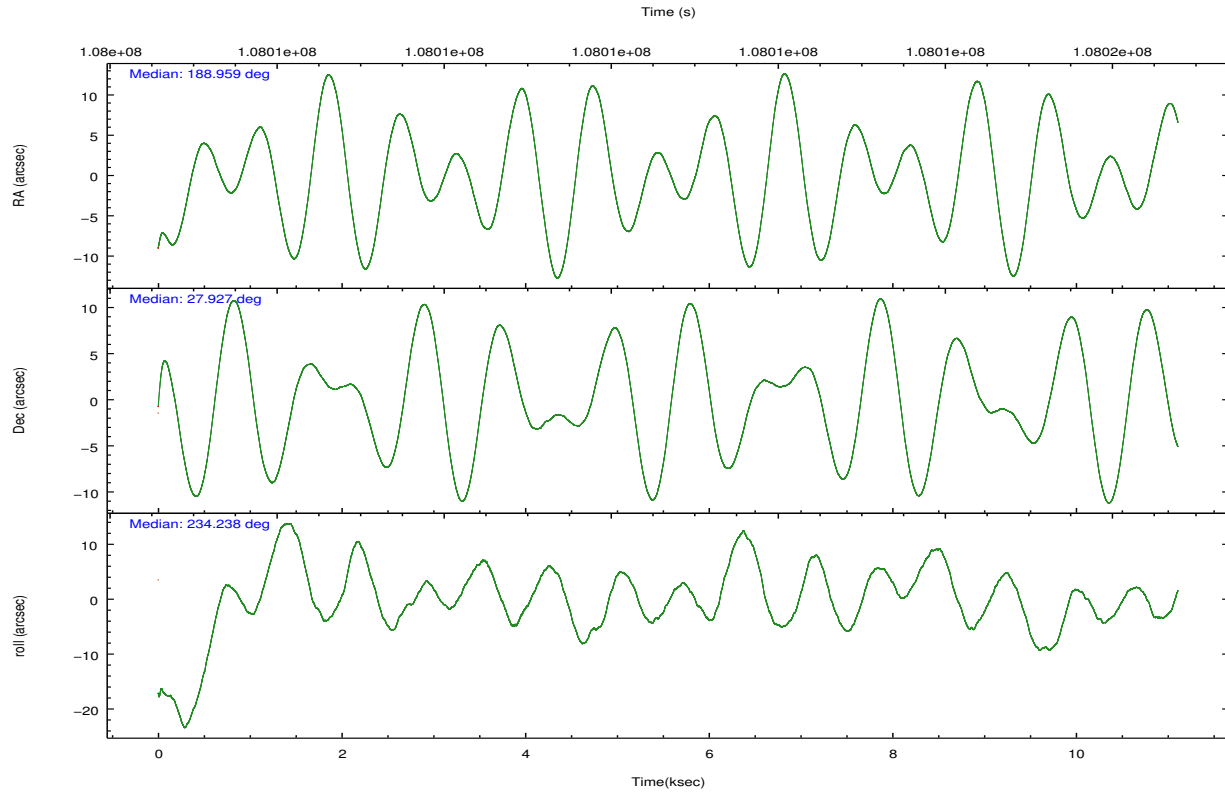
	ccd 2	ccd 3	ccd 5	ccd 6	ccd 7	ccd 8		ccd 2	ccd 3	ccd 5	ccd 6	ccd 7	ccd 8
level 1 events	23759	21807	35410	23062	29279	29990	grade 0 events	953	815	10128	847	2471	1429
rejected events	21261	19522	14273	20681	14416	24718		4%	3%	28%	3%	8%	4%
rejected %	89%	89%	40%	89%	49%	82%	grade 1 events	2	11	44	8	53	8
								0%	0%	0%	0%	0%	0%
							grade 2 events	496	411	3721	410	3317	1104
								2%	1%	10%	1%	11%	3%
							grade 3 events	335	327	773	370	1636	567
								1%	1%	2%	1%	5%	1%
							grade 4 events	340	377	794	352	1616	570
								1%	1%	2%	1%	5%	1%
							grade 5 events	724	699	2109	760	2459	959
								3%	3%	5%	3%	8%	3%
							grade 6 events	410	374	5979	424	5973	1659
								1%	1%	16%	1%	20%	5%
							grade 7 events	20499	18793	11862	19891	11754	23694
								86%	86%	33%	86%	40%	79%

2.2 Compared Parameters

Parameter	Planned	Actual	Parameter	Planned	Actual
Instrument	ACIS	ACIS	Obspar format version number	7	7
Detector	ACIS-235678	ACIS-235678	Obspar file type	PREDICTED	ACTUAL
Grating	NONE	NONE	Obspar update status	NONE	UPDATED
Data mode	FAINT	FAINT	Number of optional ACIS chips dropped	0	0
Observation mode	POINTING	POINTING	On-chip summing requested	N	N
[deg] Pointing RA	188.961494	188.9587041582208	Subarray requested	CUSTOM	1/4
[deg] Pointing Dec	27.954011	27.92682629521734	Subarray start row	385	385
[deg] Pointing Roll	234.080340	234.2382626638932	Subarray row count	256	256
[mm] SIM focus pos	-0.684267	-0.6828225247311905	Alternating exposures requested	N	N
[mm] SIM defocus	0	0.001444936568705701	[s] Primary exposure time	0.000000	1.1
[mm] SIM translation stage pos	-190.132523	-190.1400660498719			
[mm] SIM translation stage offset	0	0.00754346686406393			
[s] Observation start time (MET)	108005534.184000	108004469.55338			
Observation start date	2001-06-04T01:31:10	2001-06-04T01:14:29			
[s] Observation end time (MET)	108016234.184000	108017003.76637			
Observation end date	2001-06-04T04:29:30	2001-06-04T04:43:23			
Read mode	TIMED	TIMED			

2.3 Aspect



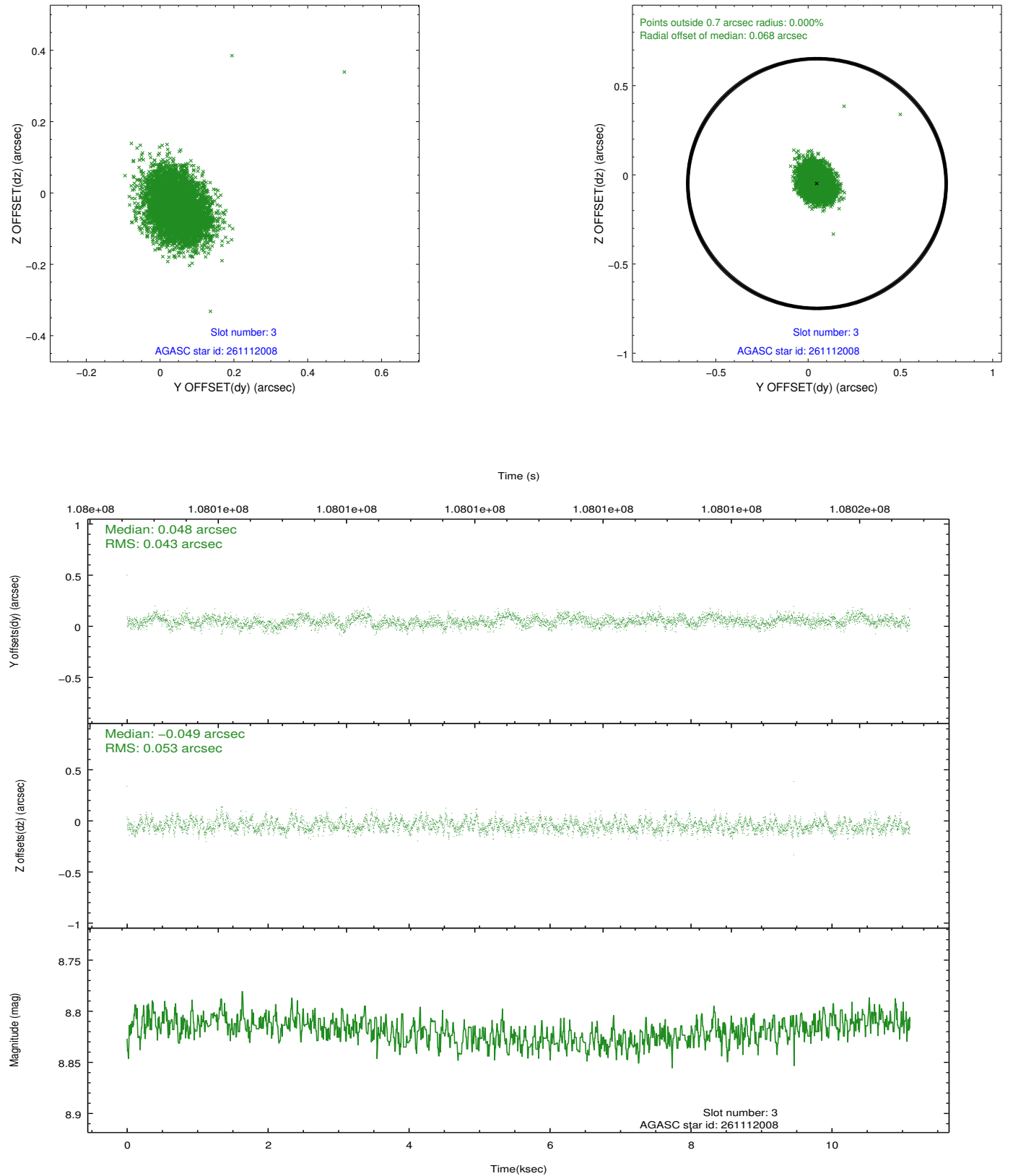


Slot Statistics

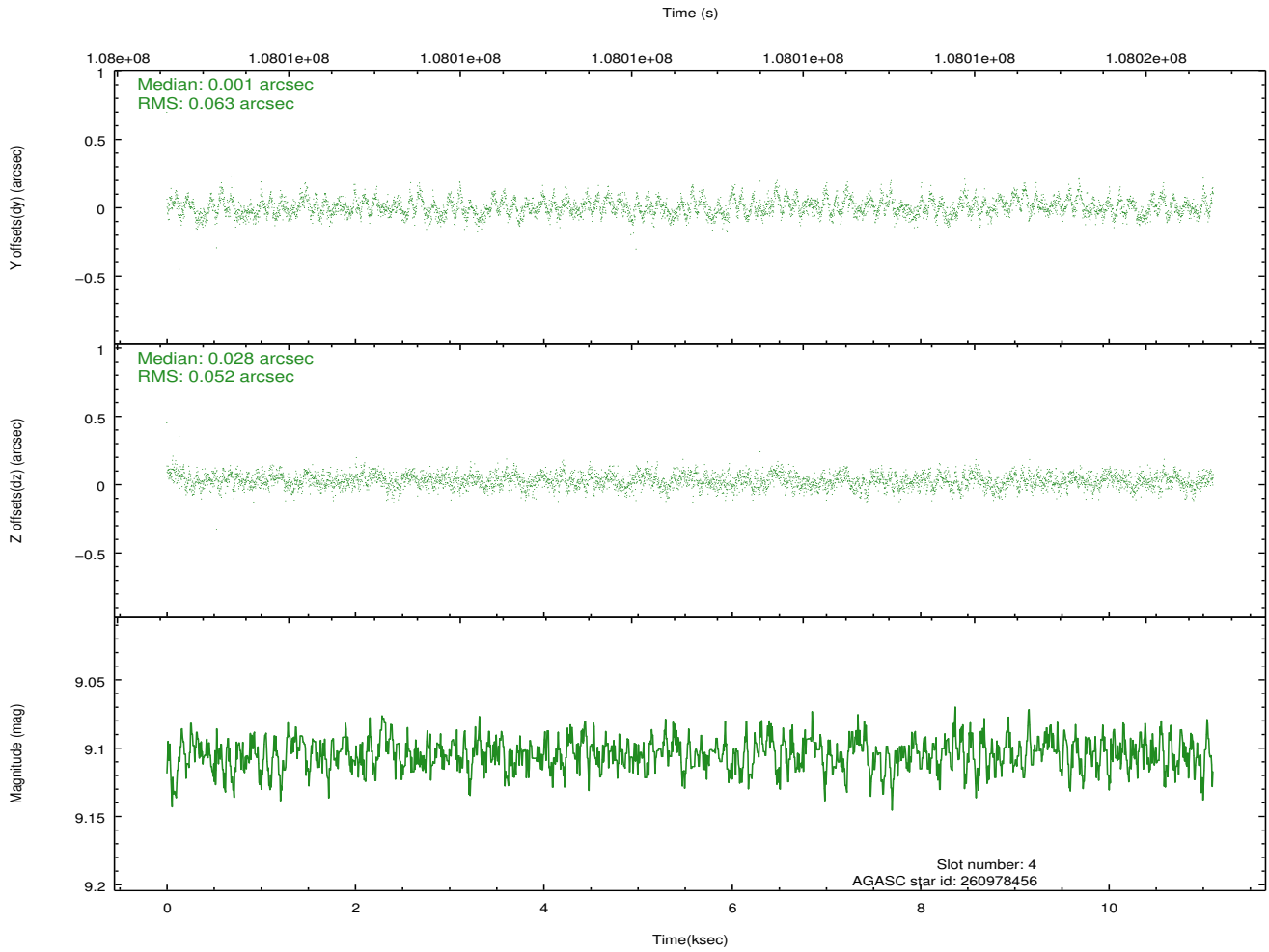
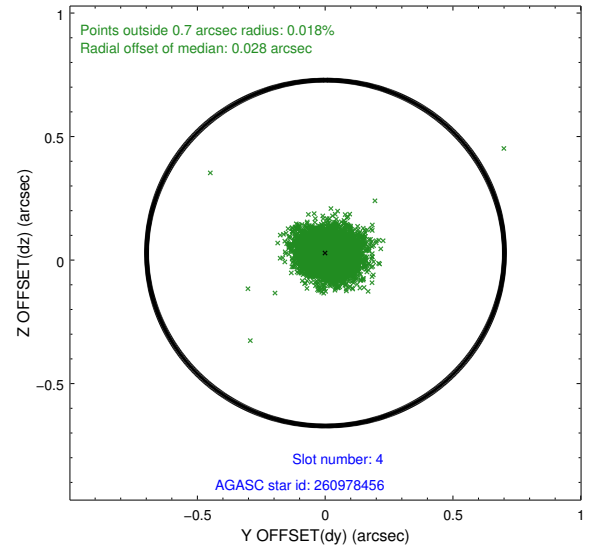
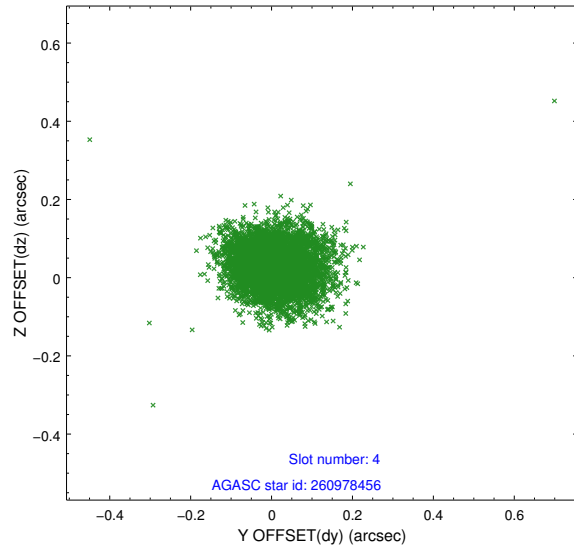
slot	status	id	mag	n_pts	med_dy	med_dz	dr1	dr2	ra	dec	mean_y	mean_z
0	FID	ACIS-S-2	7.11	2709	-0.010	0.008	0.018	0.026	0.000000	0.000000	-755.10	-1728.12
1	FID	ACIS-S-4	7.19	2709	-0.054	0.002	0.021	0.026	0.000000	0.000000	2157.92	179.90
2	FID	ACIS-S-5	7.23	2709	0.035	-0.002	0.008	0.015	0.000000	0.000000	-1807.30	174.07
3	GUIDE	261112008	8.82	5413	0.048	-0.049	0.073	0.116	188.403981	28.081490	664.79	-1705.70
4	GUIDE	260978456	9.10	5416	0.001	0.028	0.084	0.139	188.114307	28.084615	1191.41	-2460.66
5	GUIDE	261097656	9.10	5410	0.129	0.094	0.074	0.121	188.726234	27.455627	1894.52	443.16
6	GUIDE	261101336	9.32	5332	-0.019	-0.057	0.084	0.139	188.594392	28.320780	-387.08	-1717.66
7	GUIDE	261105480	9.36	5414	-0.163	-0.017	0.070	0.113	188.978850	28.694918	-2191.67	-1520.76

2.4 Star Slots

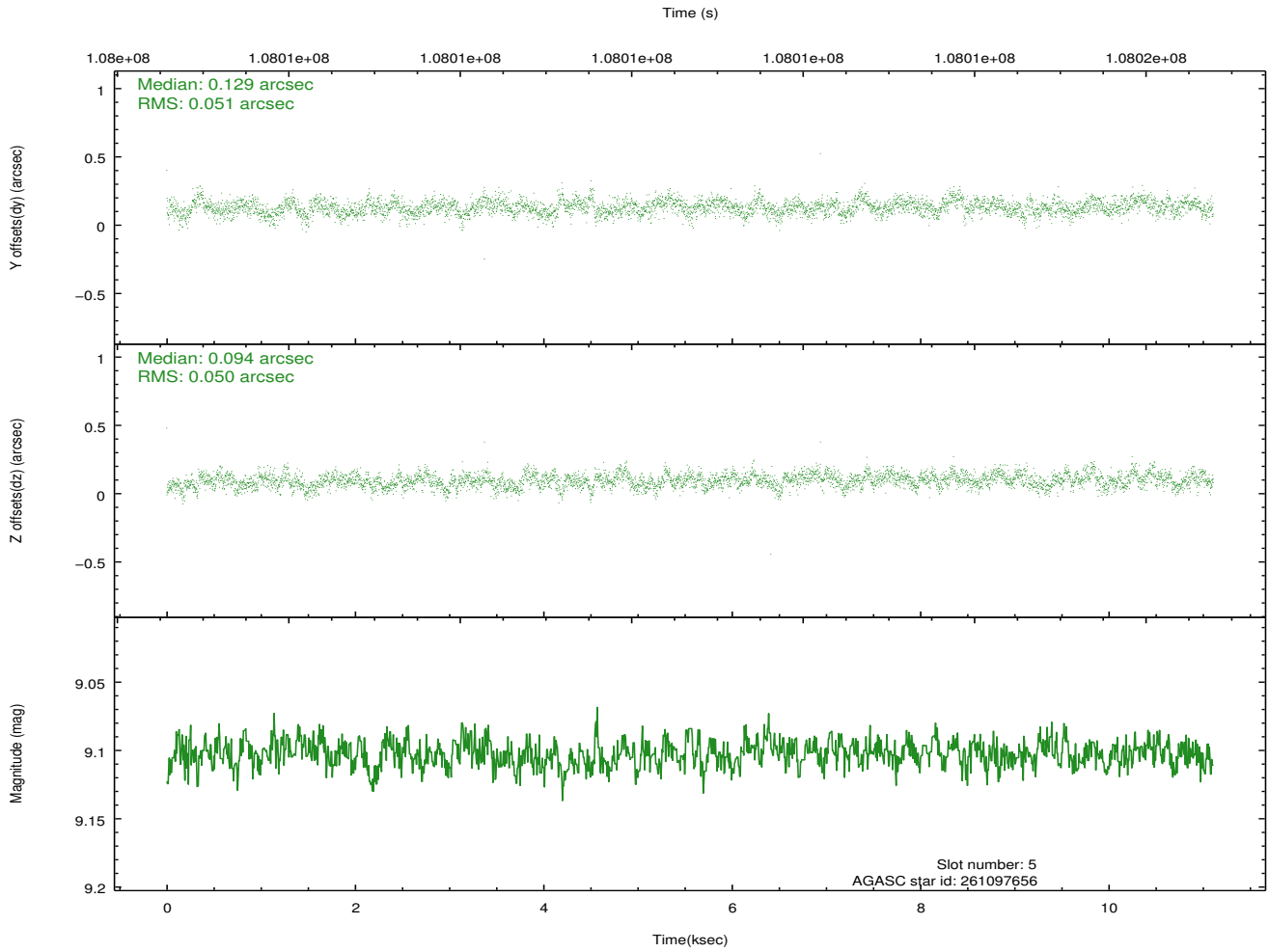
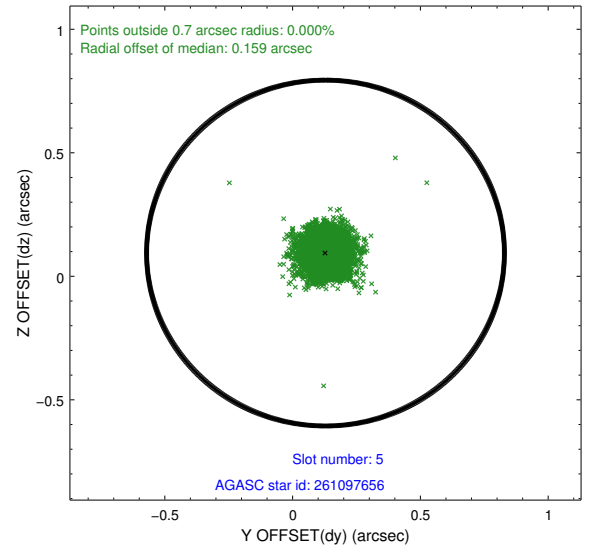
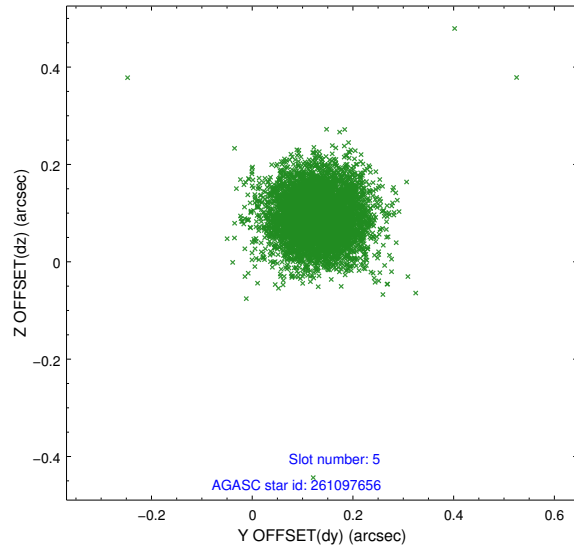
2.4.1 Slot 3



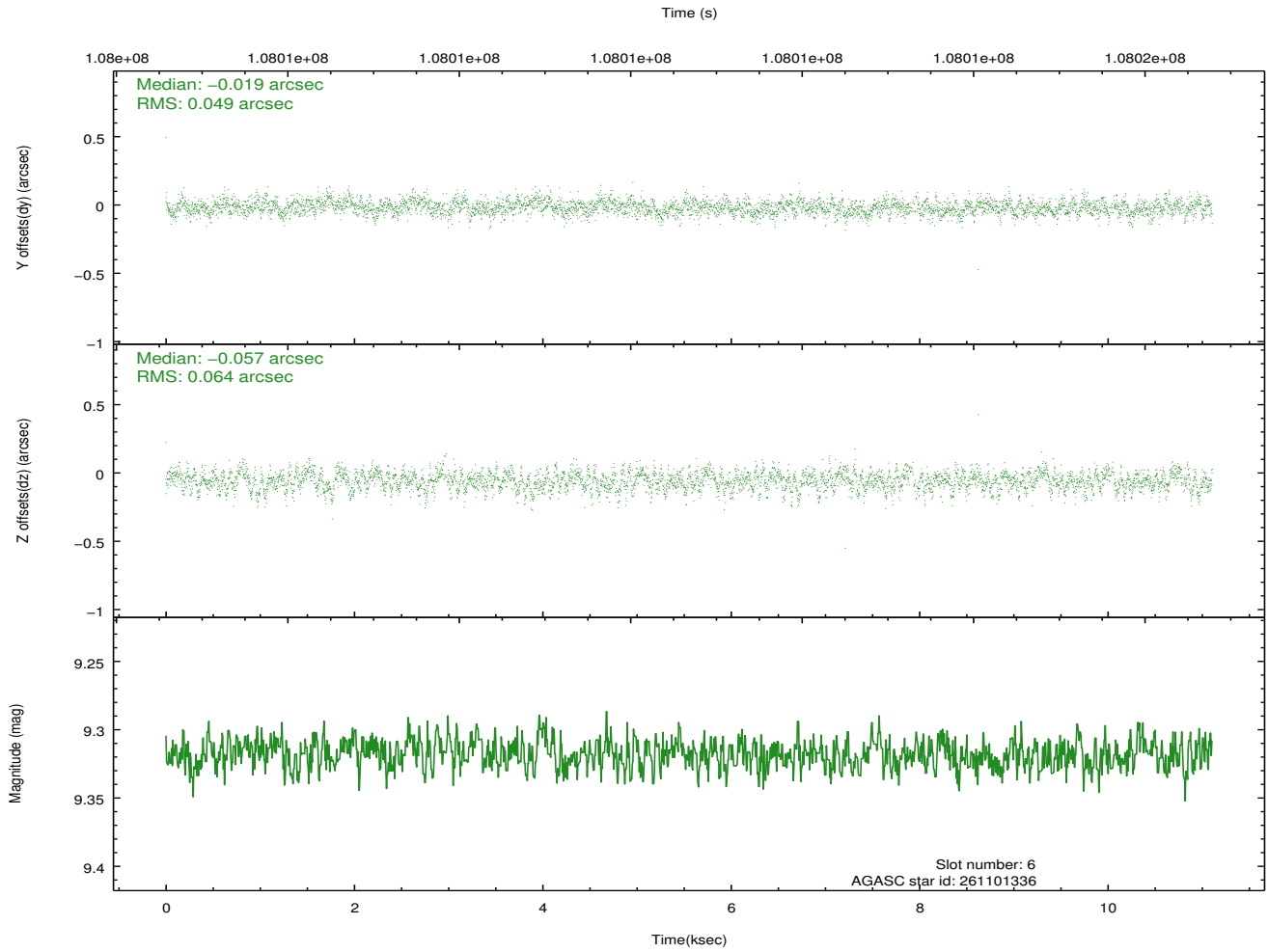
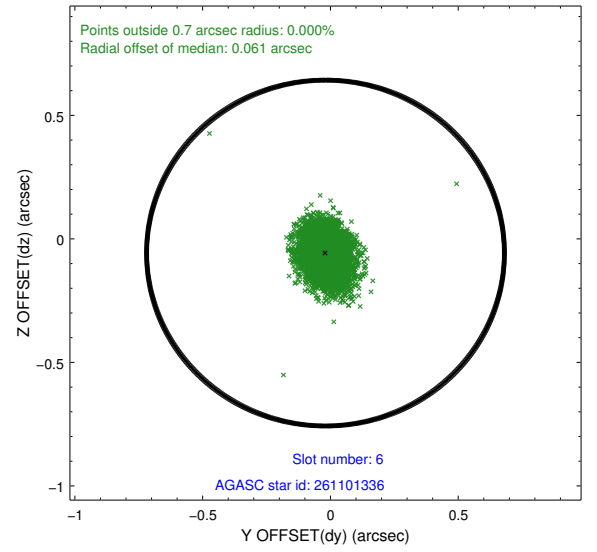
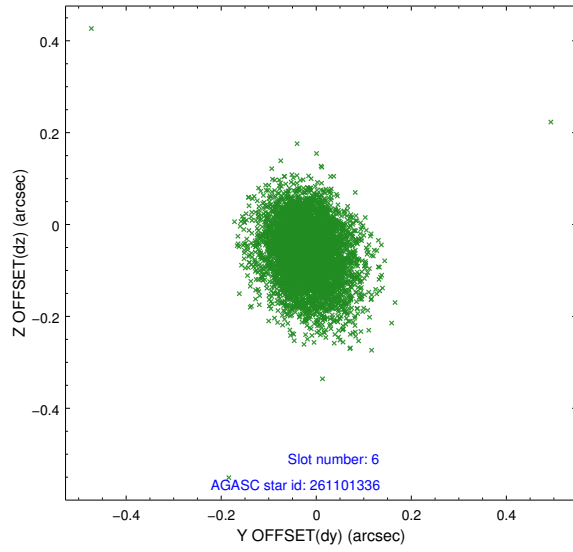
2.4.2 Slot 4



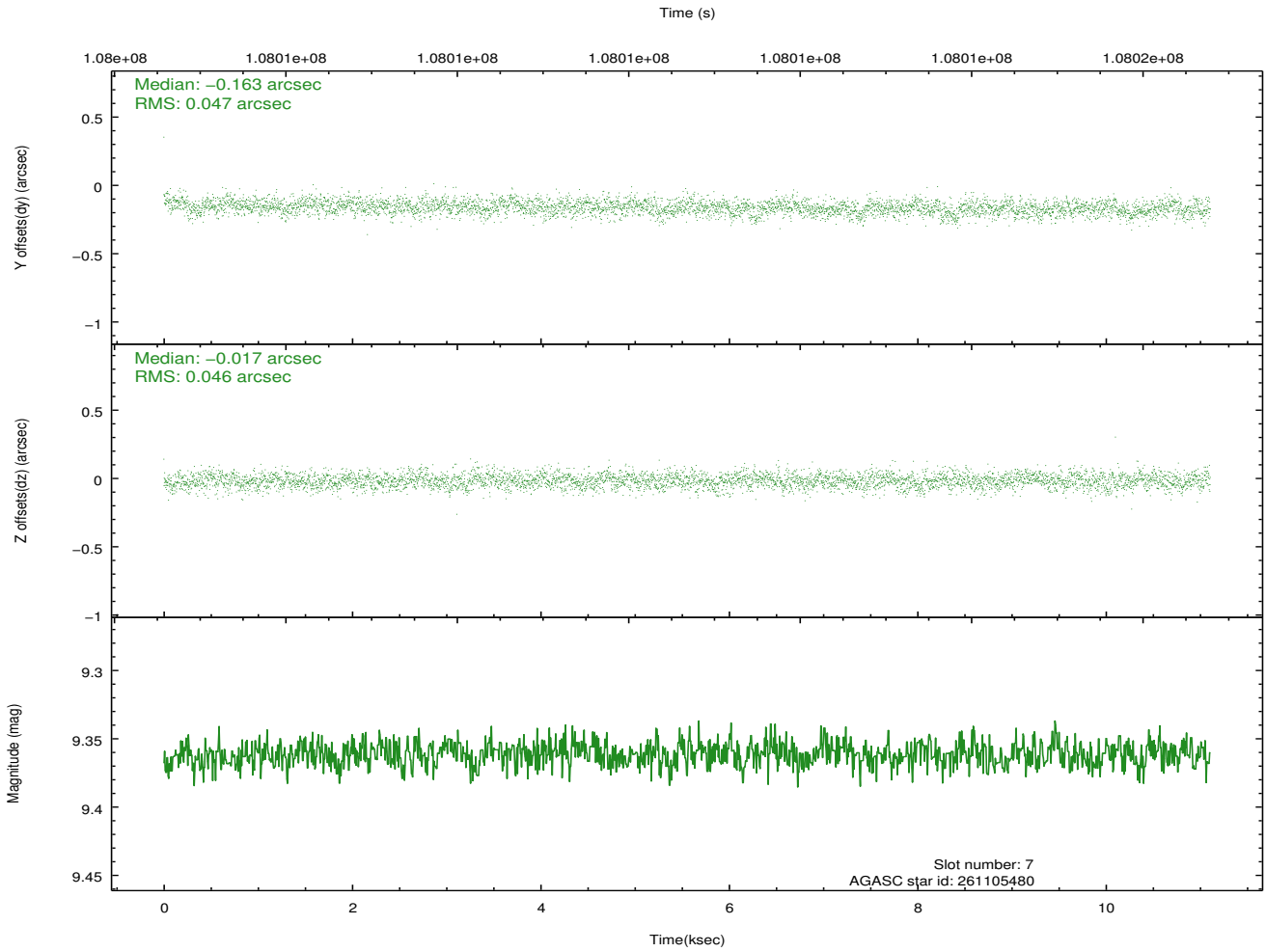
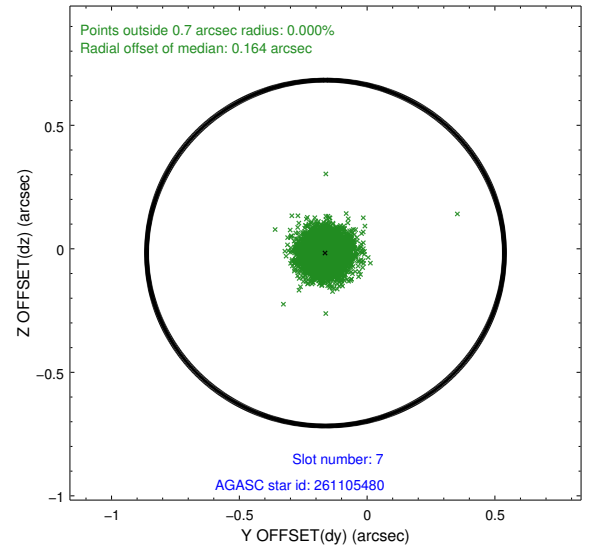
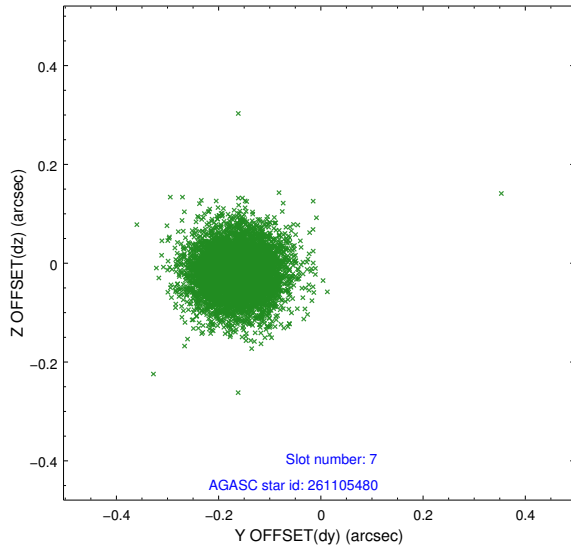
2.4.3 Slot 5



2.4.4 Slot 6

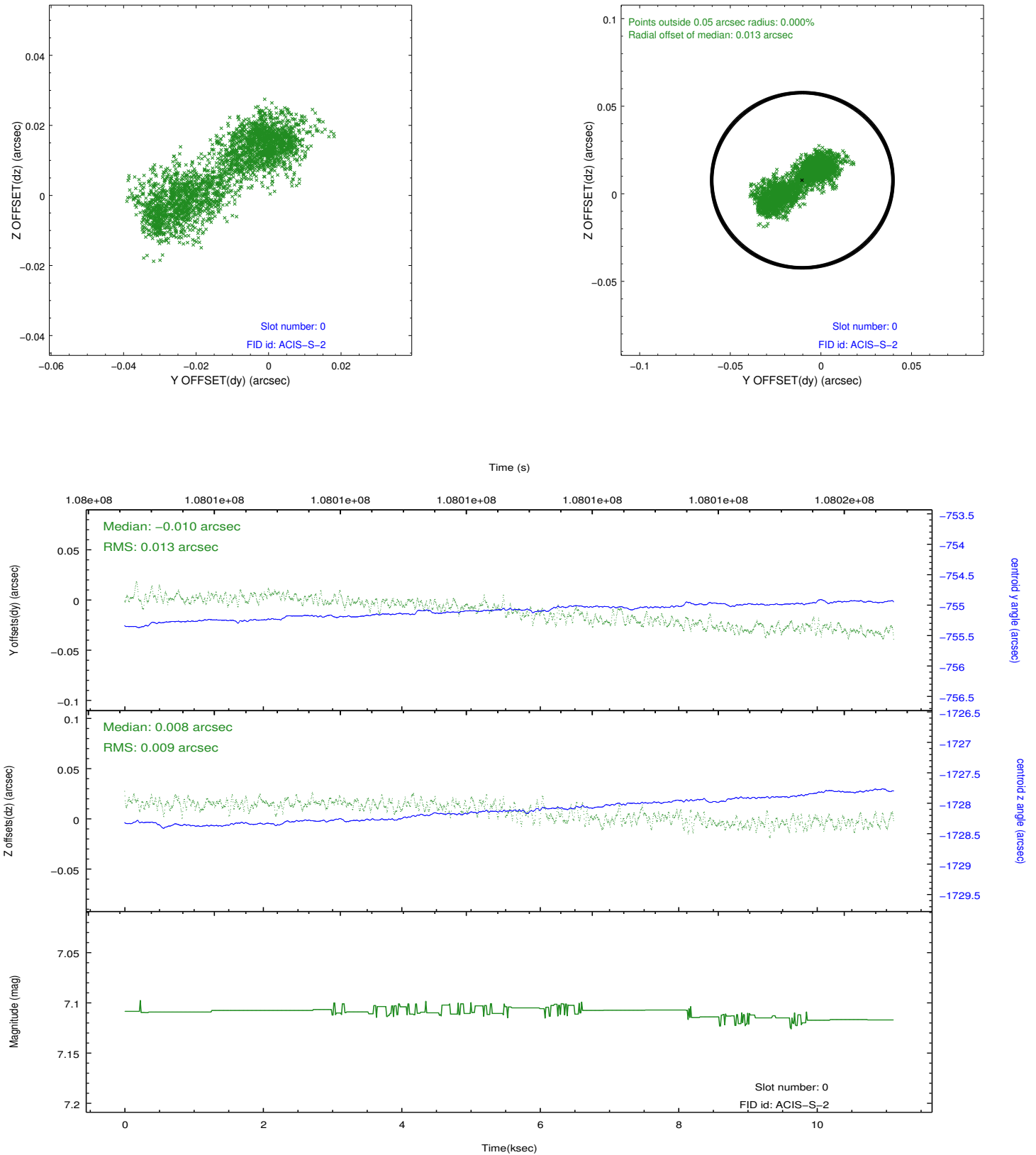


2.4.5 Slot 7

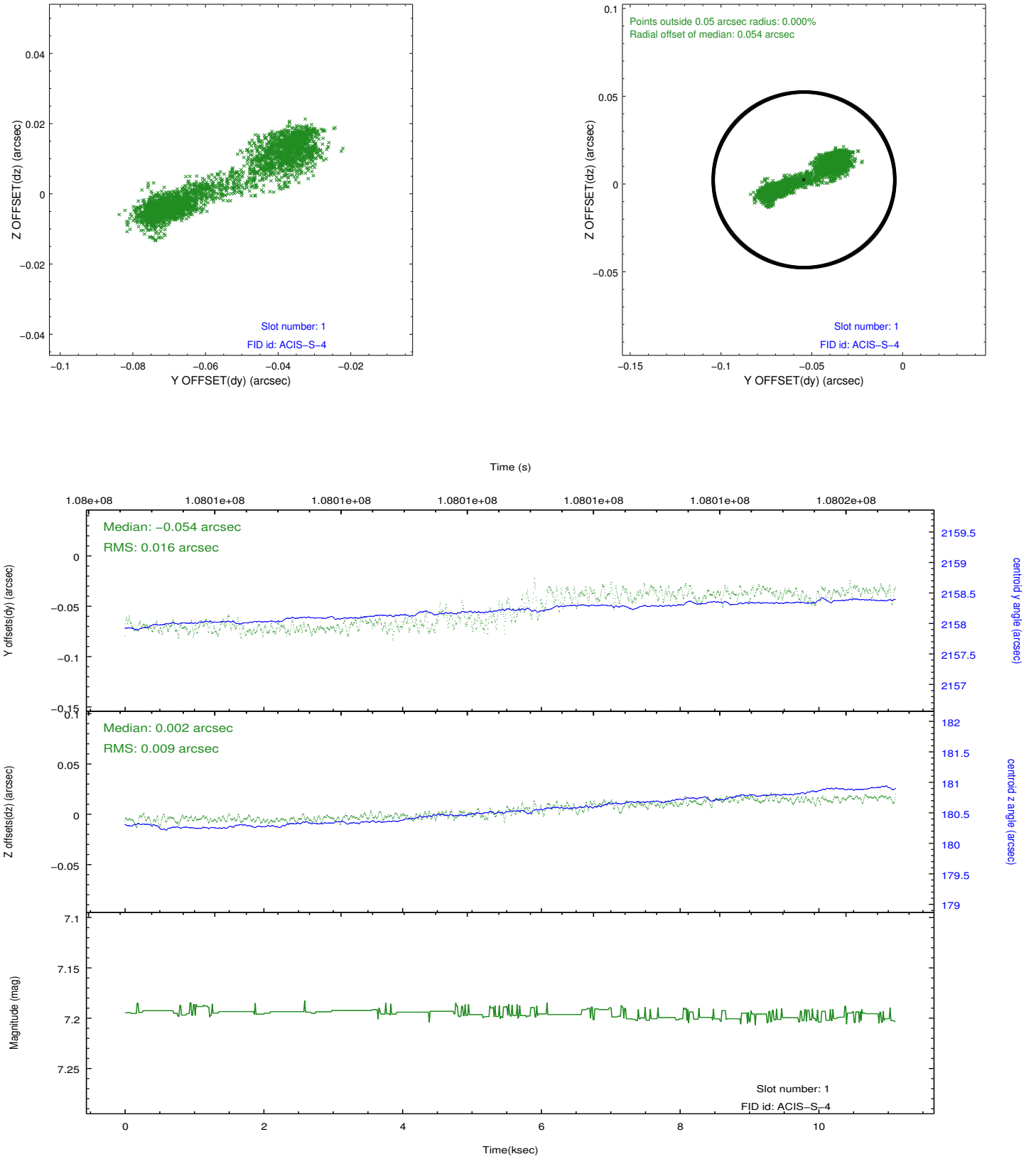


2.5 FID Slots

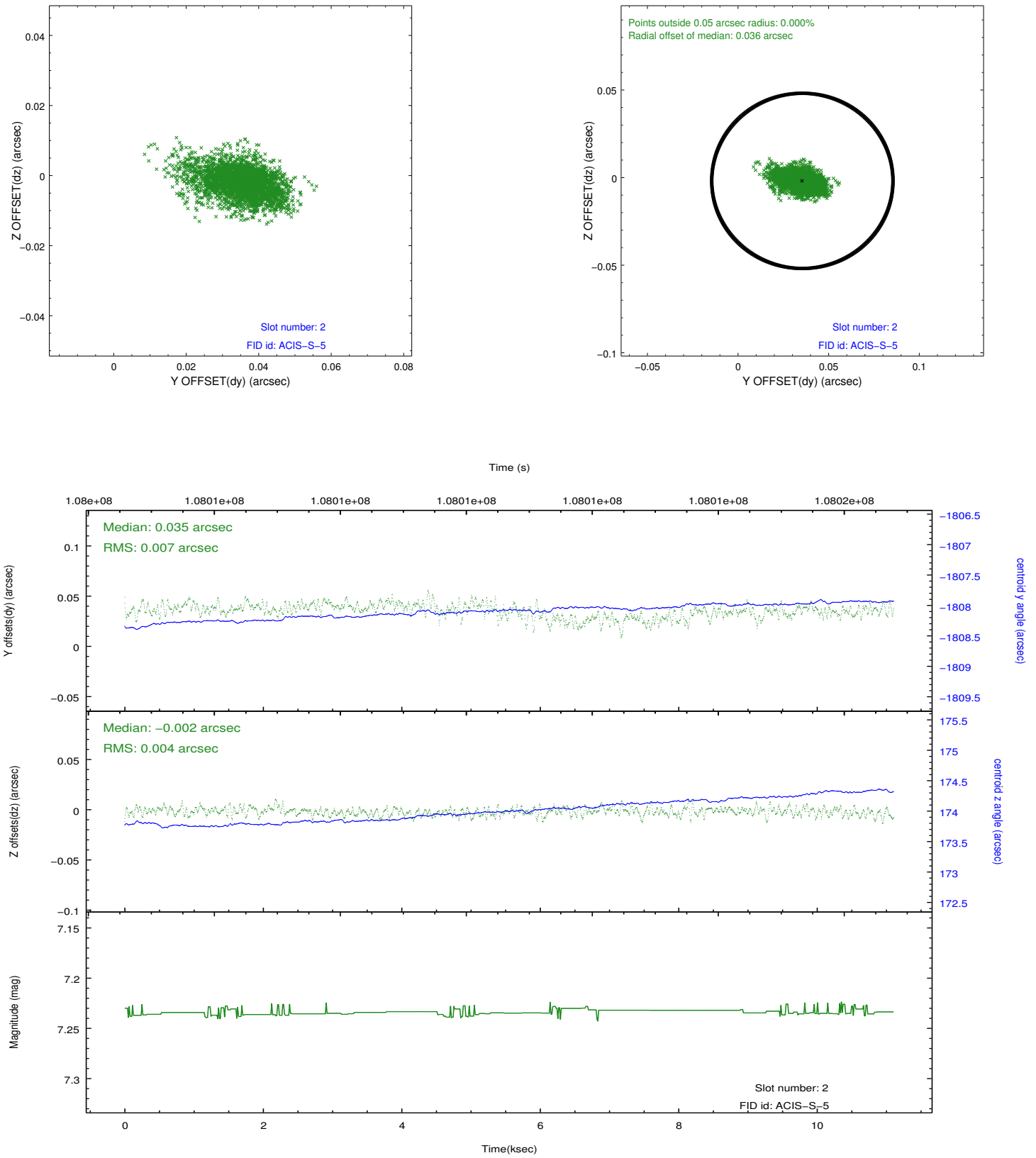
2.5.1 Slot 0



2.5.2 Slot 1



2.5.3 Slot 2



A Summary

A.1 Status

V&V Scientist	Jen Lauer
V&V Date (YYYY-MM-DD)	2012.09.20
V&V Edition	1
V&V Disposition and Status	OK
V&V Charge Time	11.1

A.2 Comments

Monitor constraint met.