

V&V Reference Report

L2 ASCDS Version : 8.4.5

Observation 2047 - L2 Version 3
Chandra X-Ray Center

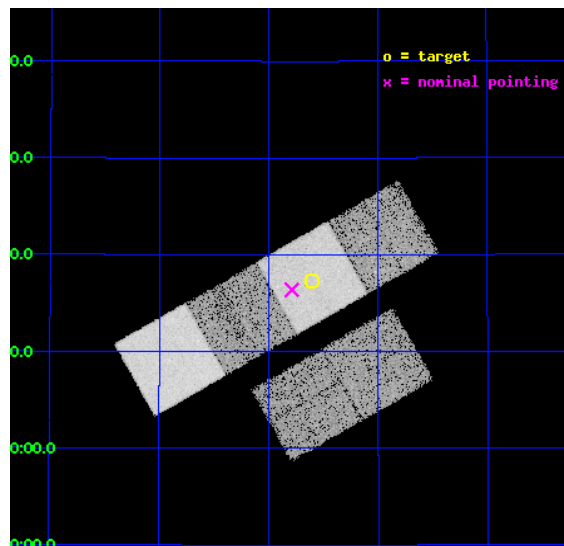
L2 Processing Date : Sep 11 2012

Contents

1	Front	2
2	OBI	3
2.1	OBI	3
2.1.1	Images	3
2.1.2	Bias	3
2.1.3	Parameters	4
2.1.4	Events	4
2.2	Compared Parameters	5
2.3	Aspect	6
2.4	Star Slots	9
2.4.1	Slot 3	9
2.4.2	Slot 4	10
2.4.3	Slot 5	11
2.4.4	Slot 6	12
2.4.5	Slot 7	13
2.5	FID Slots	14
2.5.1	Slot 0	14
2.5.2	Slot 1	15
2.5.3	Slot 2	16
A	Summary	17
A.1	Status	17
A.2	Comments	17

1 Front

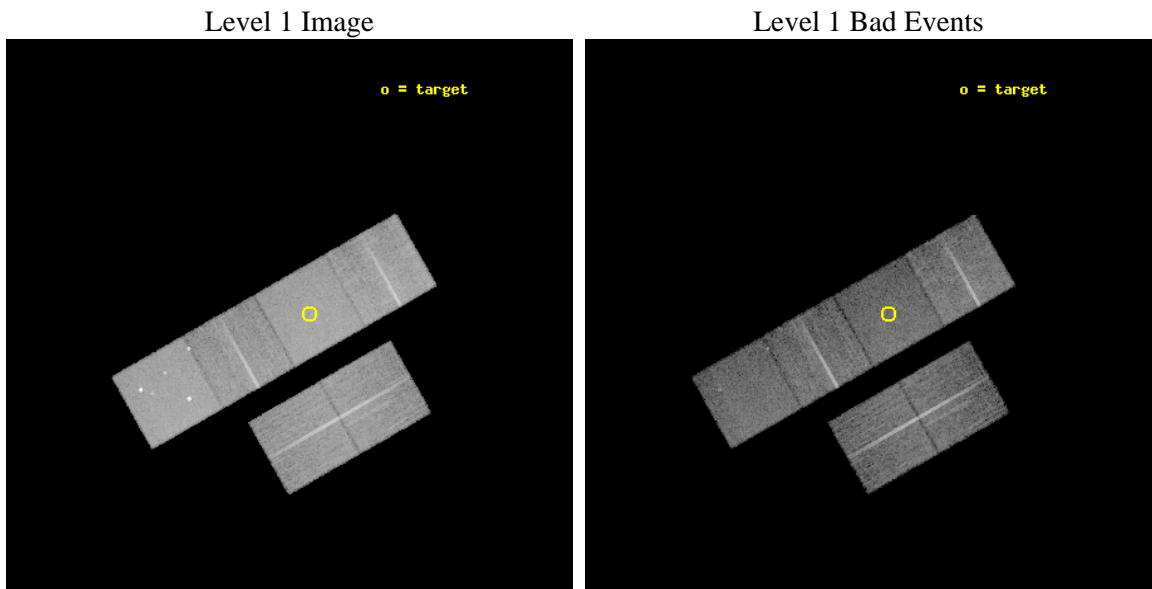
seq_num	600181	Sequence number
obs_id	2047	Observation id
title	2001: A SPACE CENSUS -- SUPERSOFT X-RAY SOURCES AND OTHER X-RAY SOURCES IN M31	Proposal title
observer	Dr. R. Di Stefano	Principal investigator
object	M31_1	Source name
dtcycle	0	
cycle	P	events from which exps? Prim/Second/Both
ra_targ	9.652083	Observer's specified target RA [deg]
dec_targ	40.288889	Observer's specified target Dec [deg]
ra_nom	9.6968901601217	Nominal RA [deg]
dec_nom	40.273091415619	Nominal Dec [deg]
roll_nom	330.37342710073	Nominal Roll [deg]
revision	3	Processing version of data
ontime	14772.998554543	Sum of GTIs [s]
livetime	14585.933951613	Livetime [s]
ontime2	14773.039594546	Sum of GTIs [s]
ontime3	14772.875434548	Sum of GTIs [s]
ontime5	14772.957514539	Sum of GTIs [s]
ontime6	14769.675514296	Sum of GTIs [s]
ontime7	14772.998554543	Sum of GTIs [s]
ontime8	14769.593464226	Sum of GTIs [s]
l2events	145339	Number of level 2 events



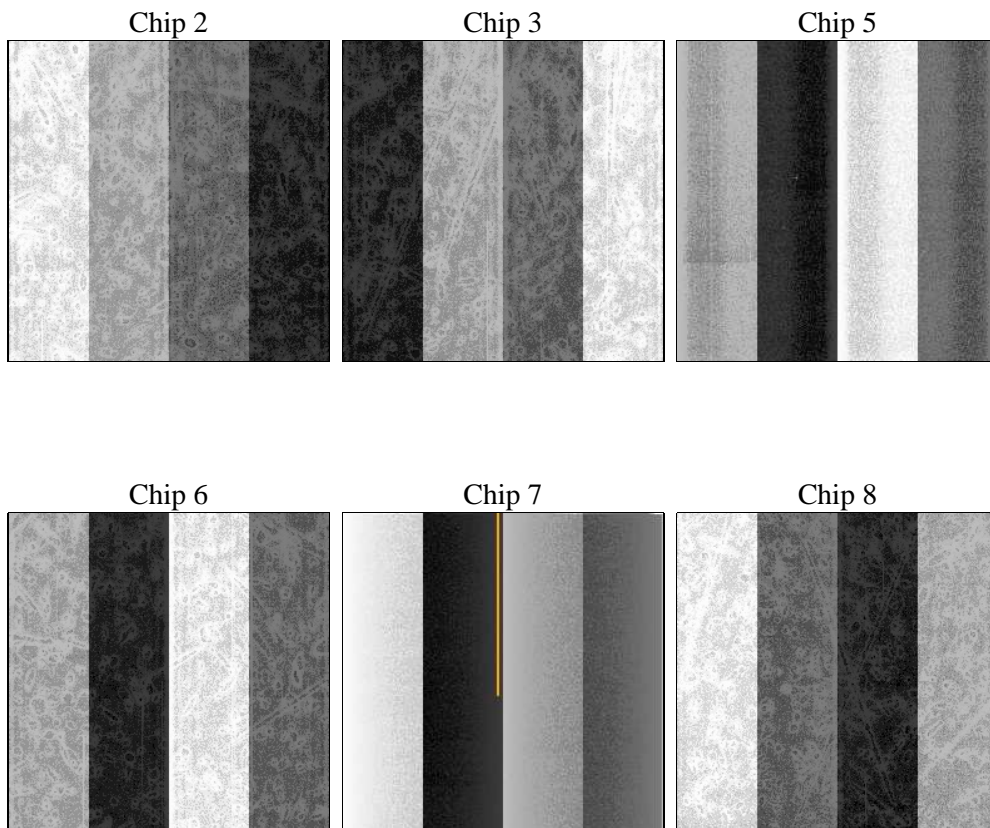
2 OBI

2.1 OBI

2.1.1 Images



2.1.2 Bias



2.1.3 Parameters

obi_num	0	Obi number	sched_exp_time	15064.740000	[s] Scheduled observation exposure time
ascdsver	8.4.5	Processing system revision	ontime	14772.998554543	Sum of GTIs [s]
caldbver	4.5.1.1	 	ontime2	14773.039594546	Sum of GTIs [s]
date	2012-09-12T00:01:37	Date and time of file creation	ontime3	14772.875434548	Sum of GTIs [s]
revision	3	Processing version of data	ontime5	14772.957514539	Sum of GTIs [s]
			ontime6	14769.675514296	Sum of GTIs [s]
			ontime7	14772.998554543	Sum of GTIs [s]
			ontime8	14769.593464226	Sum of GTIs [s]
			l1events	671393	Number of level 1 events

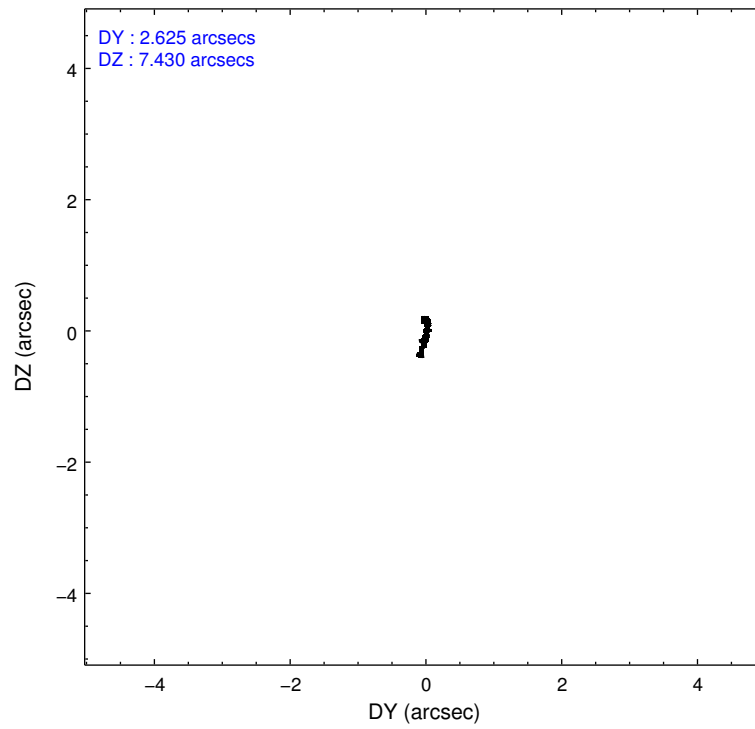
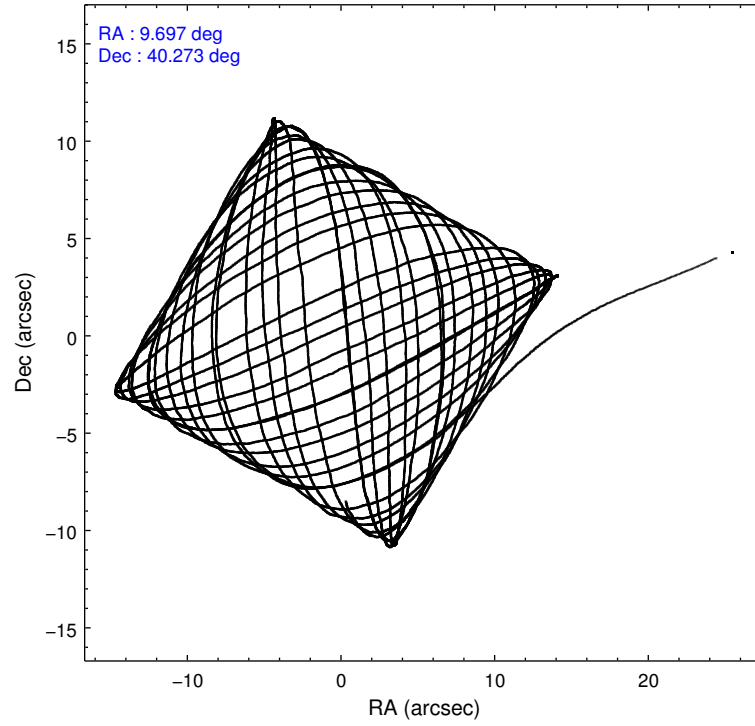
2.1.4 Events

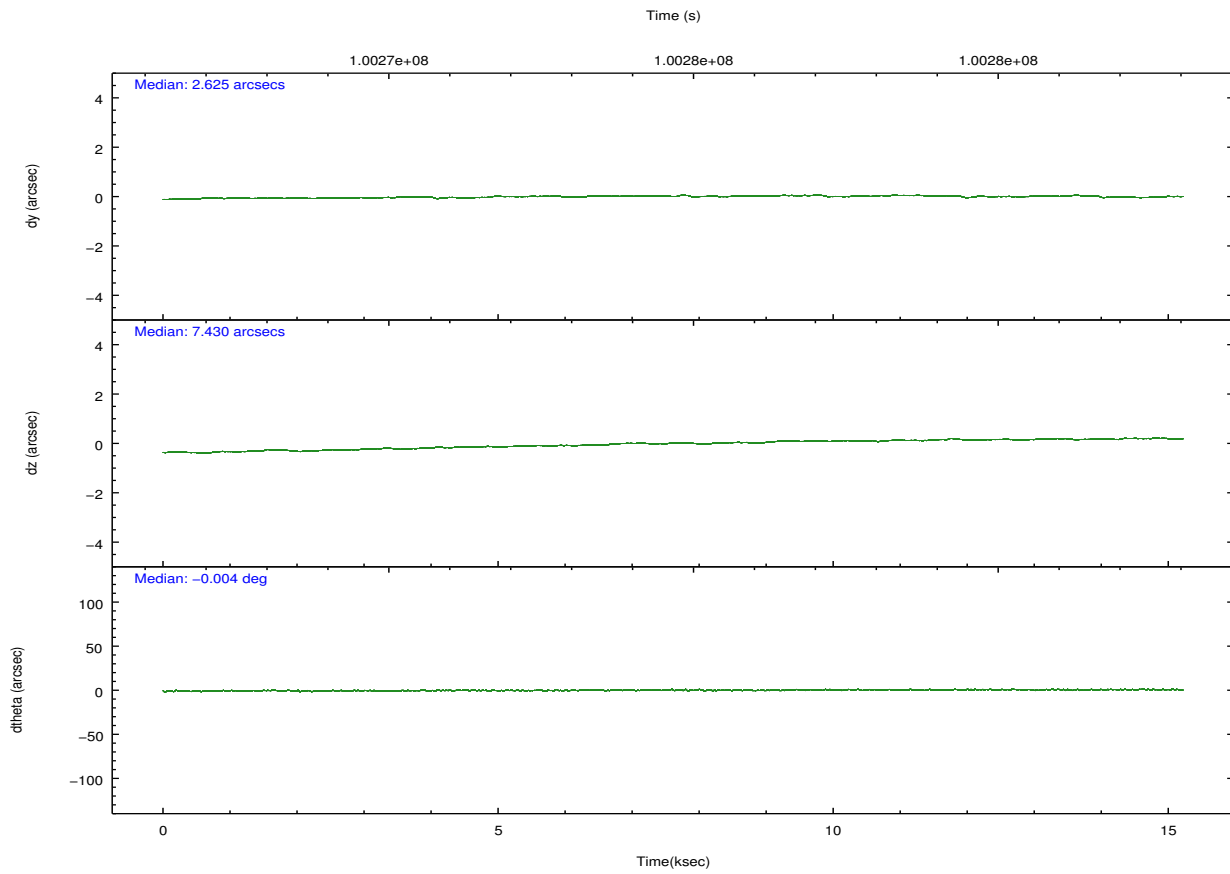
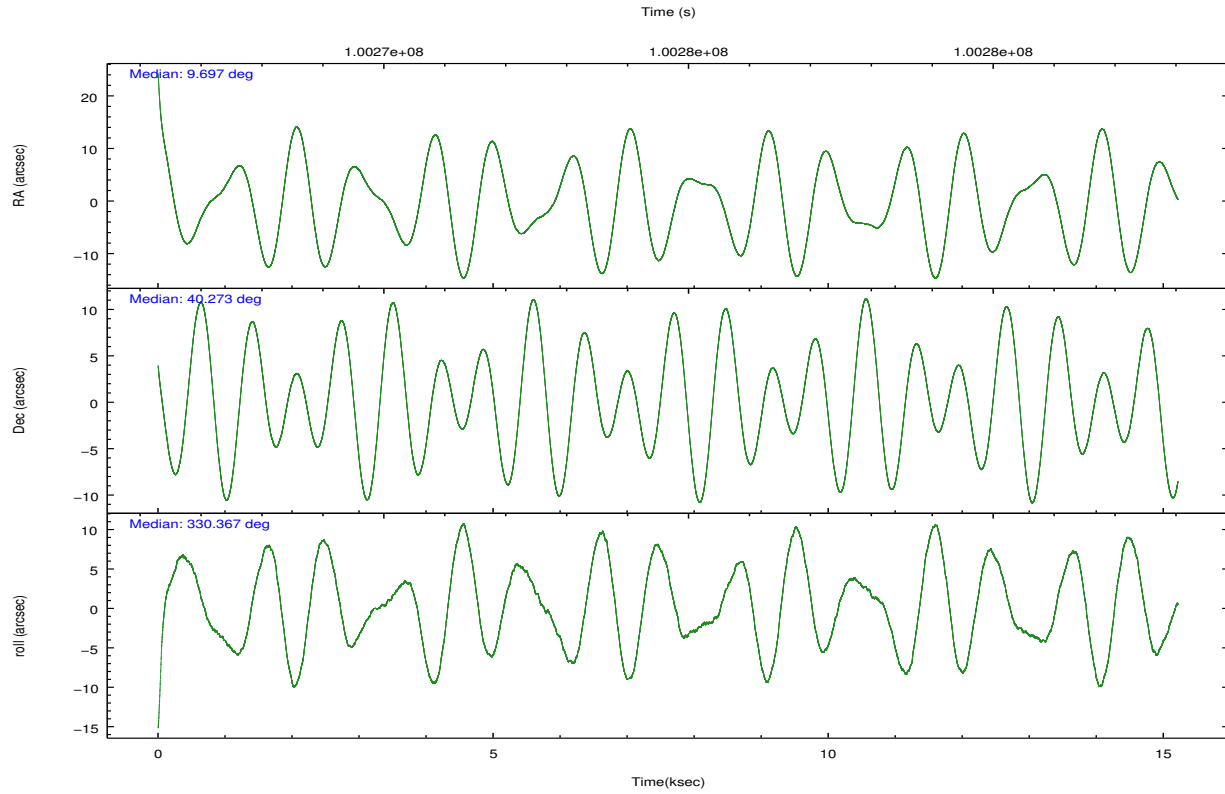
	ccd 2	ccd 3	ccd 5	ccd 6	ccd 7	ccd 8		ccd 2	ccd 3	ccd 5	ccd 6	ccd 7	ccd 8
level 1 events	97379	93102	140779	96246	121674	122213	grade 0 events	4420	4440	10472	4406	4893	7290
rejected events	86722	82556	72591	85434	70609	99358		4%	4%	7%	4%	4%	5%
rejected %	89%	88%	51%	88%	58%	81%	grade 1 events	38	36	397	53	96	62
								0%	0%	0%	0%	0%	0%
							grade 2 events	2322	2111	20111	2128	10009	4881
								2%	2%	14%	2%	8%	3%
							grade 3 events	1015	1053	2859	1093	4643	2575
								1%	1%	2%	1%	3%	2%
							grade 4 events	978	1034	2740	1066	4750	2455
								1%	1%	1%	1%	3%	2%
							grade 5 events	3312	3574	10238	4016	11554	5014
								3%	3%	7%	4%	9%	4%
							grade 6 events	1923	1915	32027	2125	26785	5657
								1%	2%	22%	2%	22%	4%
							grade 7 events	83371	78939	61935	81359	58944	94279
								85%	84%	43%	84%	48%	77%

2.2 Compared Parameters

Parameter	Planned	Actual	Parameter	Planned	Actual
Instrument	ACIS	ACIS	Obspar format version number	7	7
Detector	ACIS-235678	ACIS-235678	Obspar file type	PREDICTED	ACTUAL
Grating	NONE	NONE	Obspar update status	NONE	UPDATED
Data mode	FAINT	FAINT	Number of optional ACIS chips dropped	0	0
Observation mode	POINTING	POINTING	On-chip summing requested	N	N
[deg] Pointing RA	9.661078	9.696890160121697	Subarray requested	NONE	NONE
[deg] Pointing Dec	40.272683	40.27309141561867	Alternating exposures requested	N	N
[deg] Pointing Roll	330.239962	330.3734271007299	[s] Primary exposure time	0.000000	3.2
[mm] SIM focus pos	-0.684267	-0.6828225247311905			
[mm] SIM defocus	0	0.001444936568705701			
[mm] SIM translation stage pos	-190.132523	-190.1400660498719			
[mm] SIM translation stage offset	0	0.00754346686406393			
[s] Observation start time (MET)	100267210.184000	100266116.44073			
Observation start date	2001-03-06T11:59:06	2001-03-06T11:41:56			
[s] Observation end time (MET)	100282275.184000	100282589.72886			
Observation end date	2001-03-06T16:10:11	2001-03-06T16:16:29			
Read mode	TIMED	TIMED			

2.3 Aspect



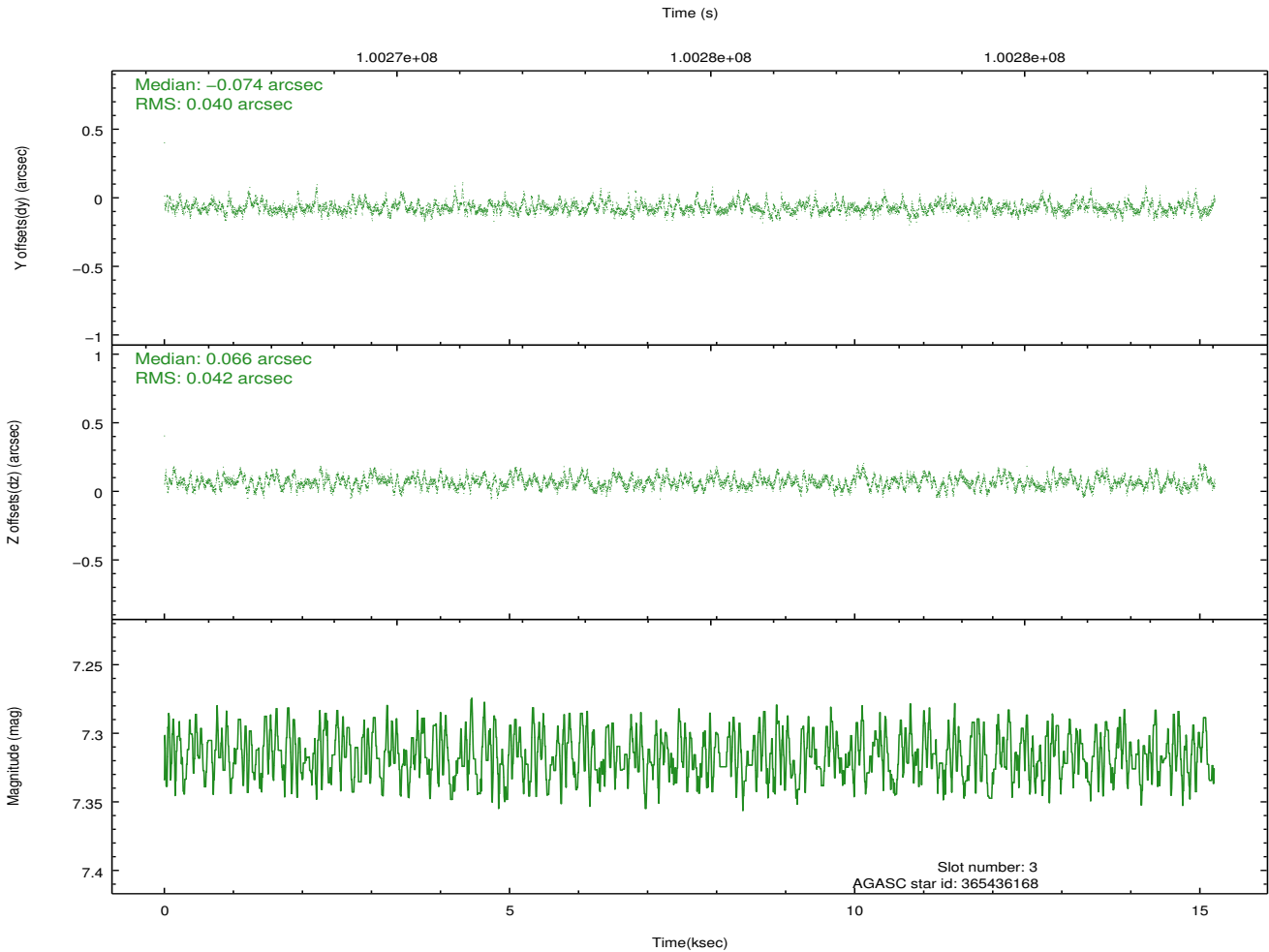
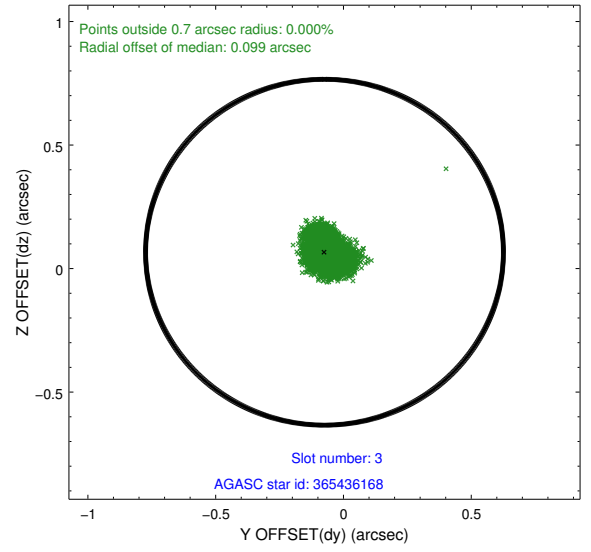
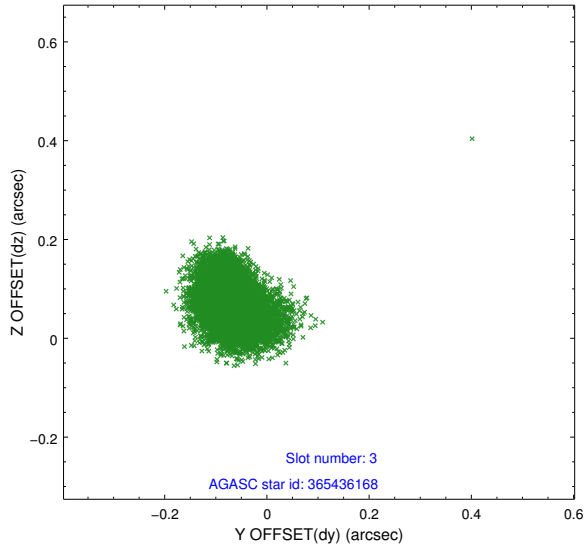


Slot Statistics

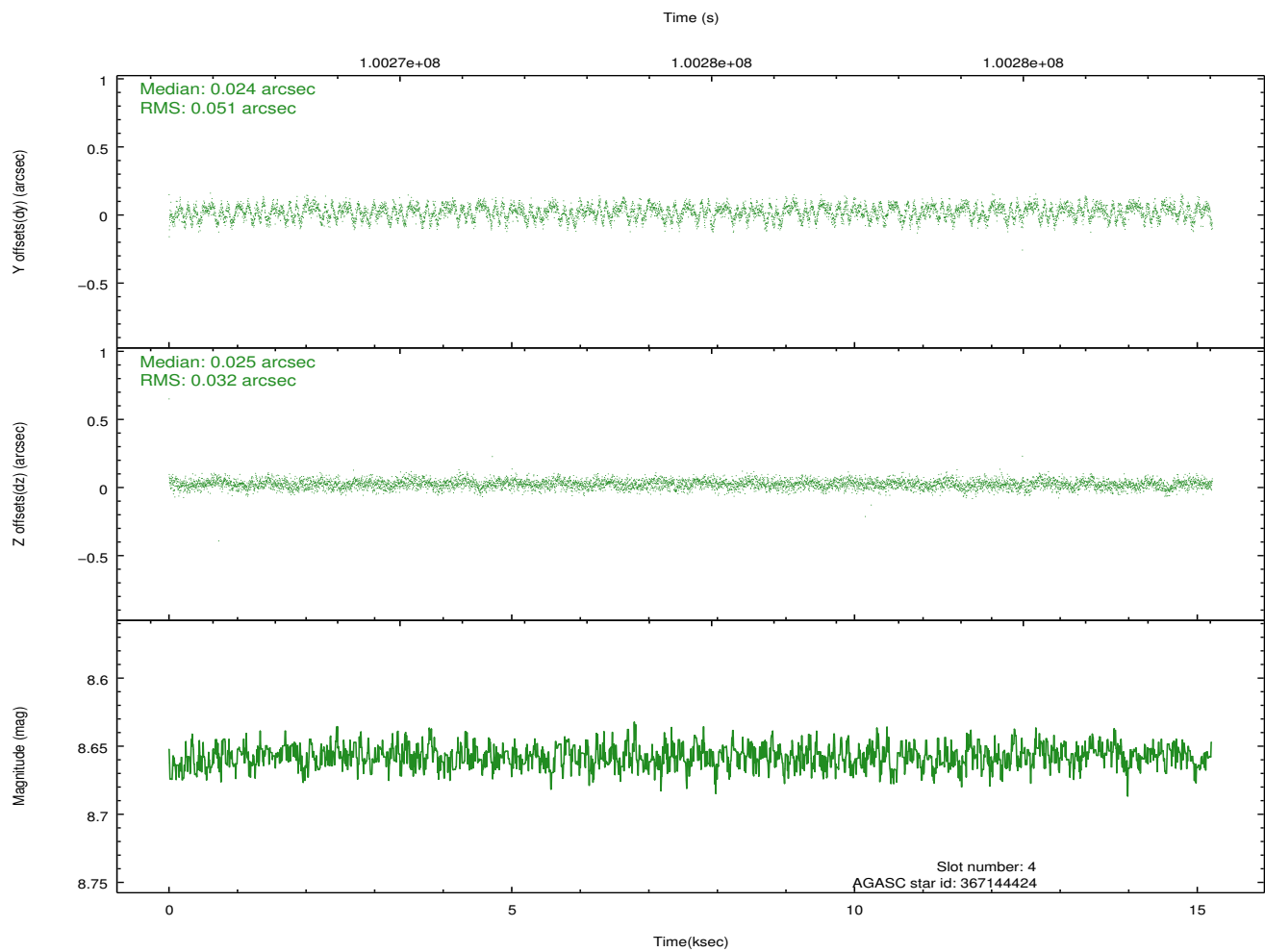
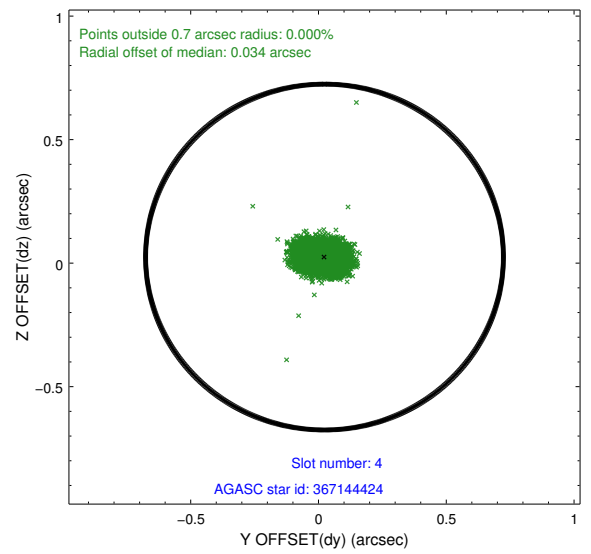
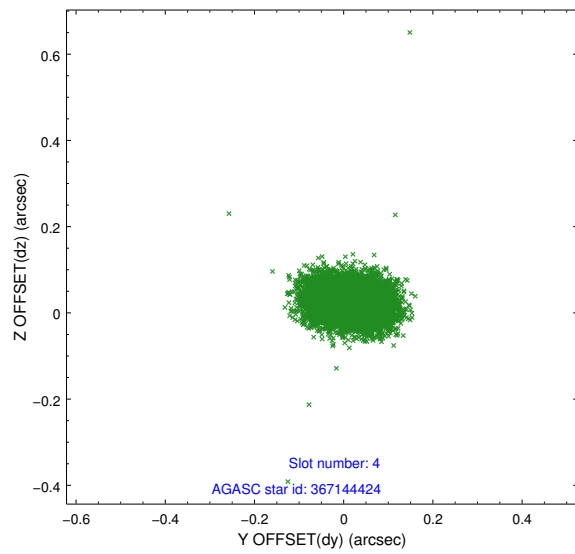
slot	status	id	mag	n_pts	med_dy	med_dz	dr1	dr2	ra	dec	mean_y	mean_z
0	FID	ACIS-S-2	7.11	3711	-0.004	-0.006	0.008	0.013	0.000000	0.000000	-755.25	-1728.57
1	FID	ACIS-S-4	7.20	3711	-0.047	0.004	0.006	0.011	0.000000	0.000000	2157.85	179.61
2	FID	ACIS-S-5	7.24	3712	0.020	0.011	0.008	0.012	0.000000	0.000000	-1807.69	173.63
3	GUIDE	365436168	7.32	7423	-0.074	0.066	0.062	0.102	9.360006	40.332380	-823.41	-222.22
4	GUIDE	367144424	8.66	7419	0.024	0.025	0.063	0.103	10.464515	40.309136	1845.64	1217.79
5	GUIDE	365431072	9.01	7419	-0.112	0.093	0.081	0.132	9.376278	41.092224	-2134.84	2178.97
6	GUIDE	365435256	8.89	7420	0.072	-0.081	0.089	0.137	9.519215	39.682445	714.66	-2039.01
7	GUIDE	367147216	7.50	7419	0.090	-0.101	0.058	0.100	10.028762	39.440654	2374.96	-2091.04

2.4 Star Slots

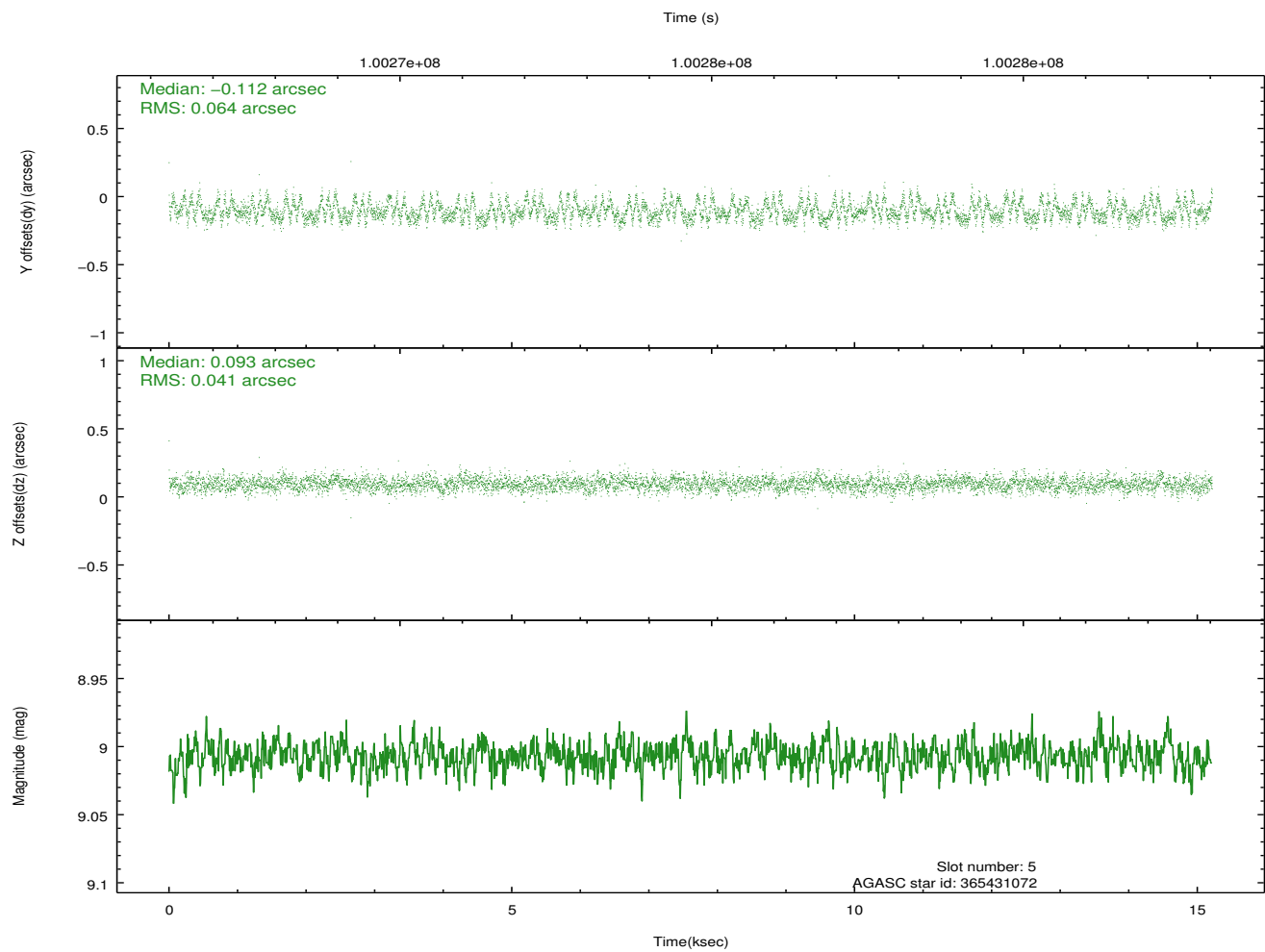
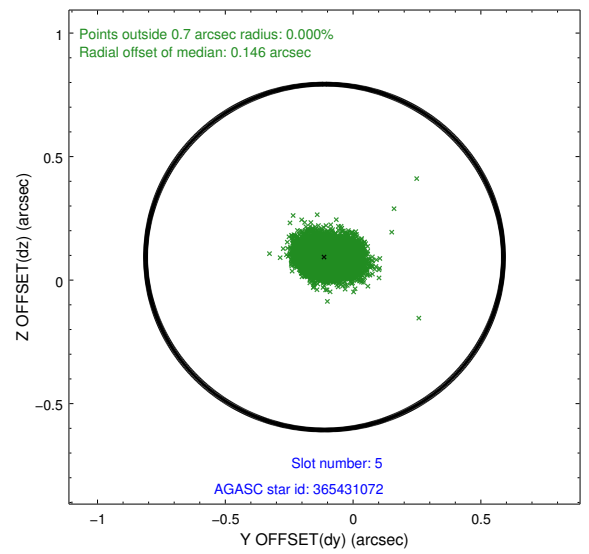
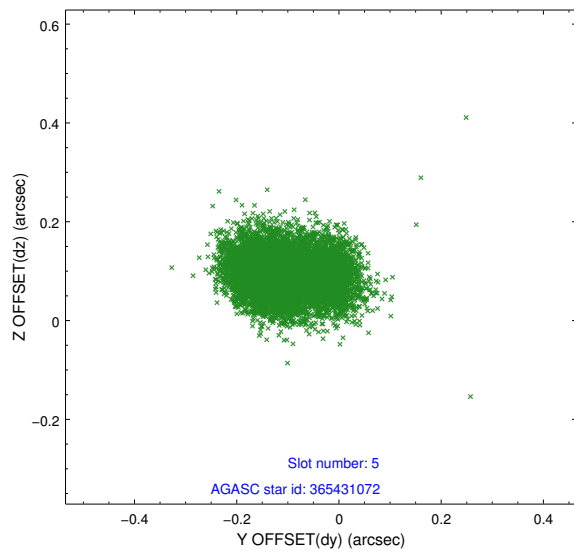
2.4.1 Slot 3



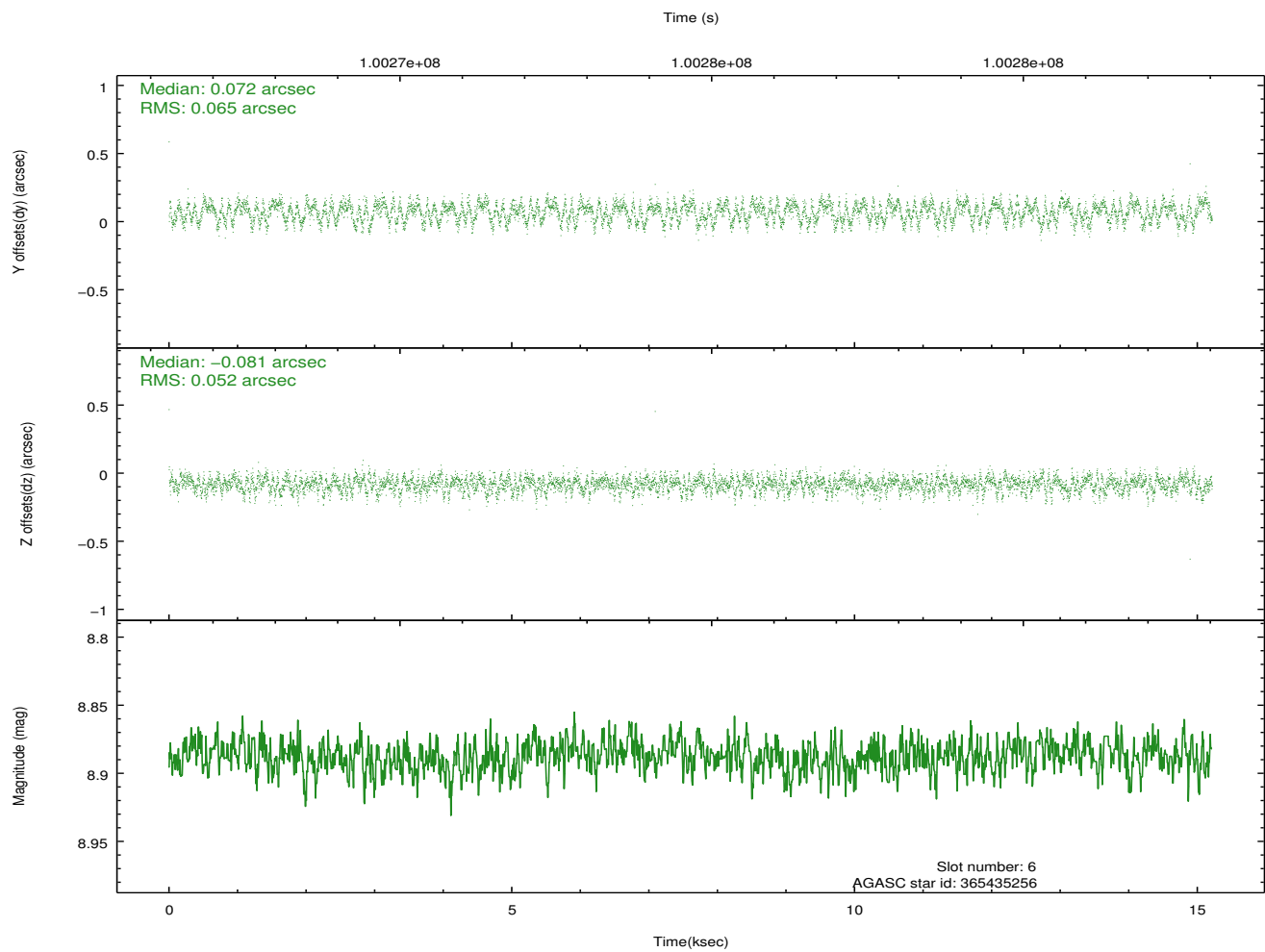
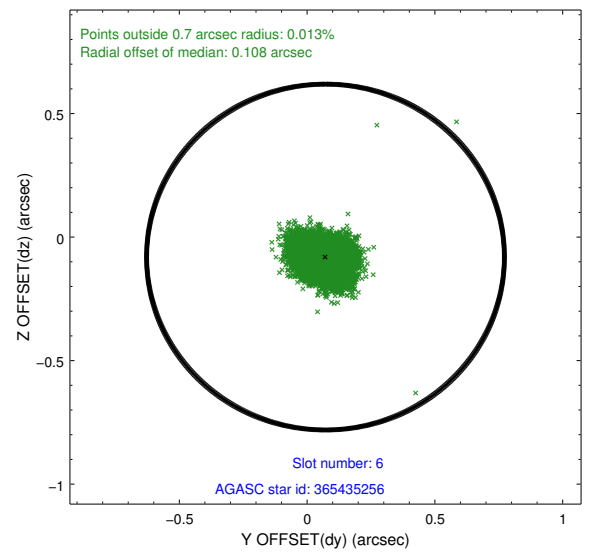
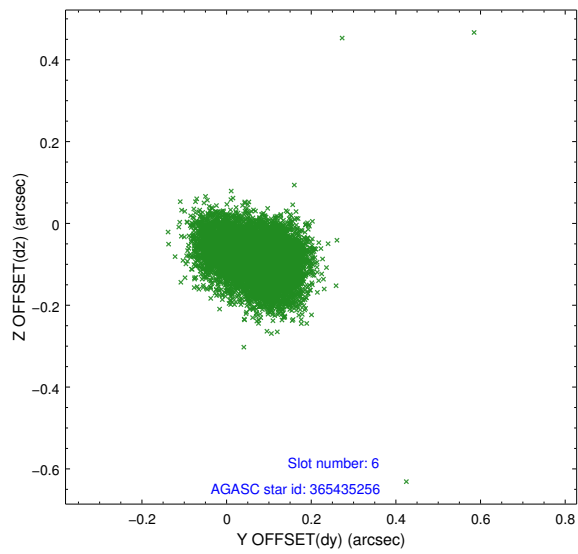
2.4.2 Slot 4



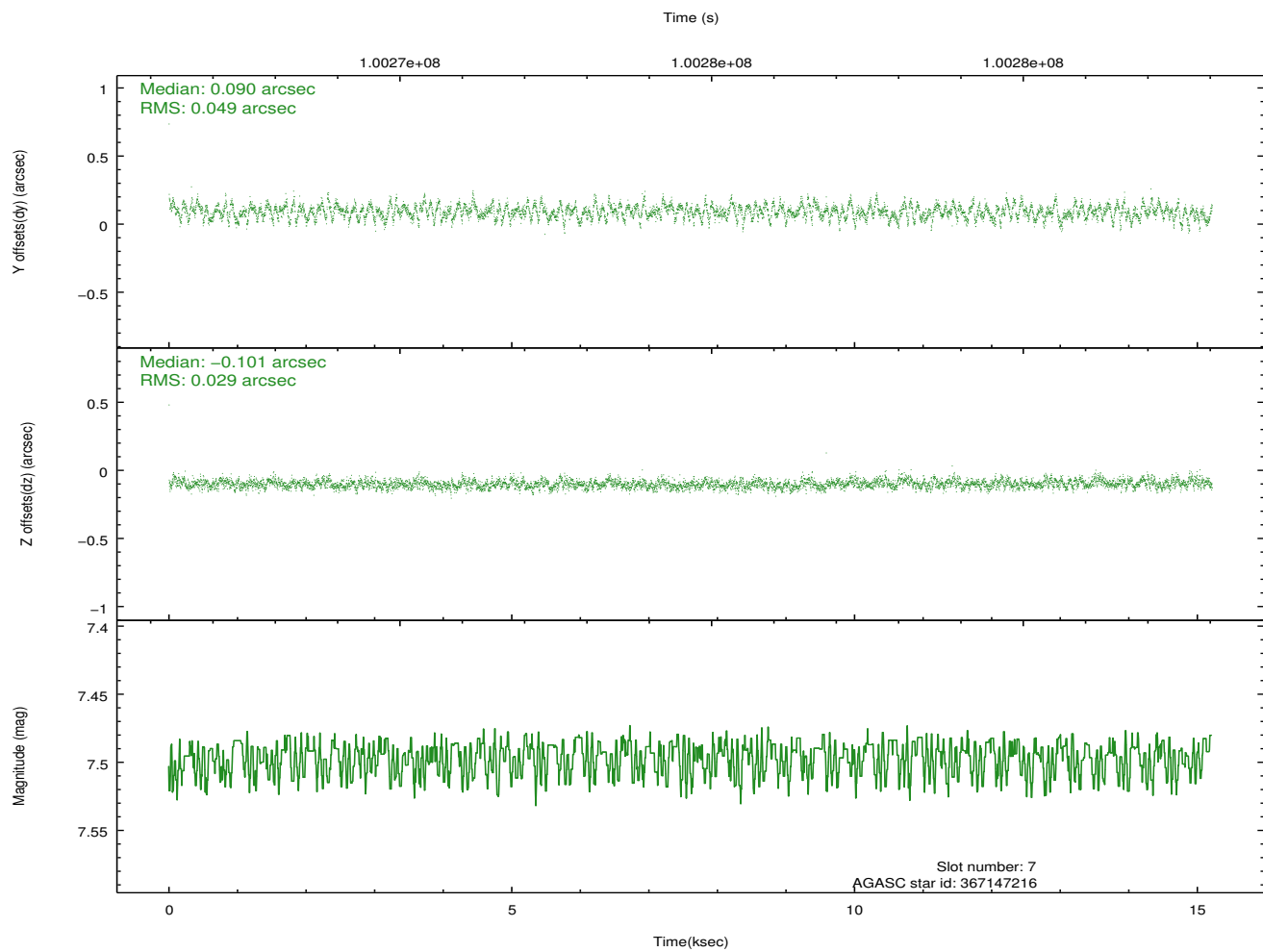
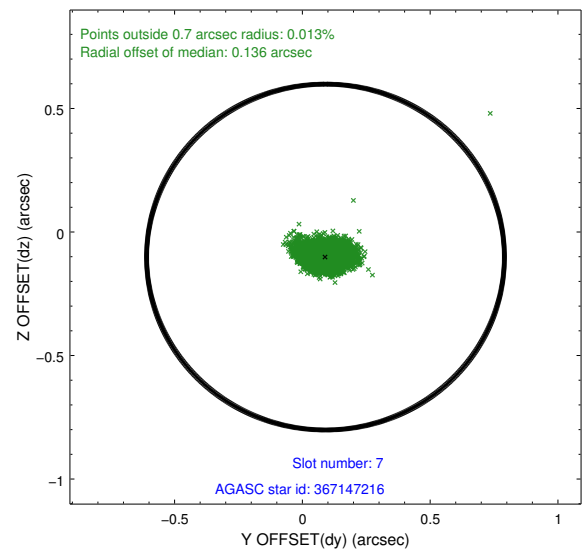
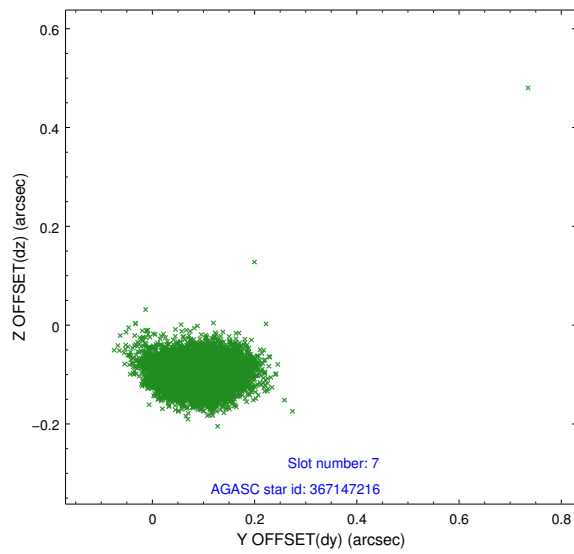
2.4.3 Slot 5



2.4.4 Slot 6

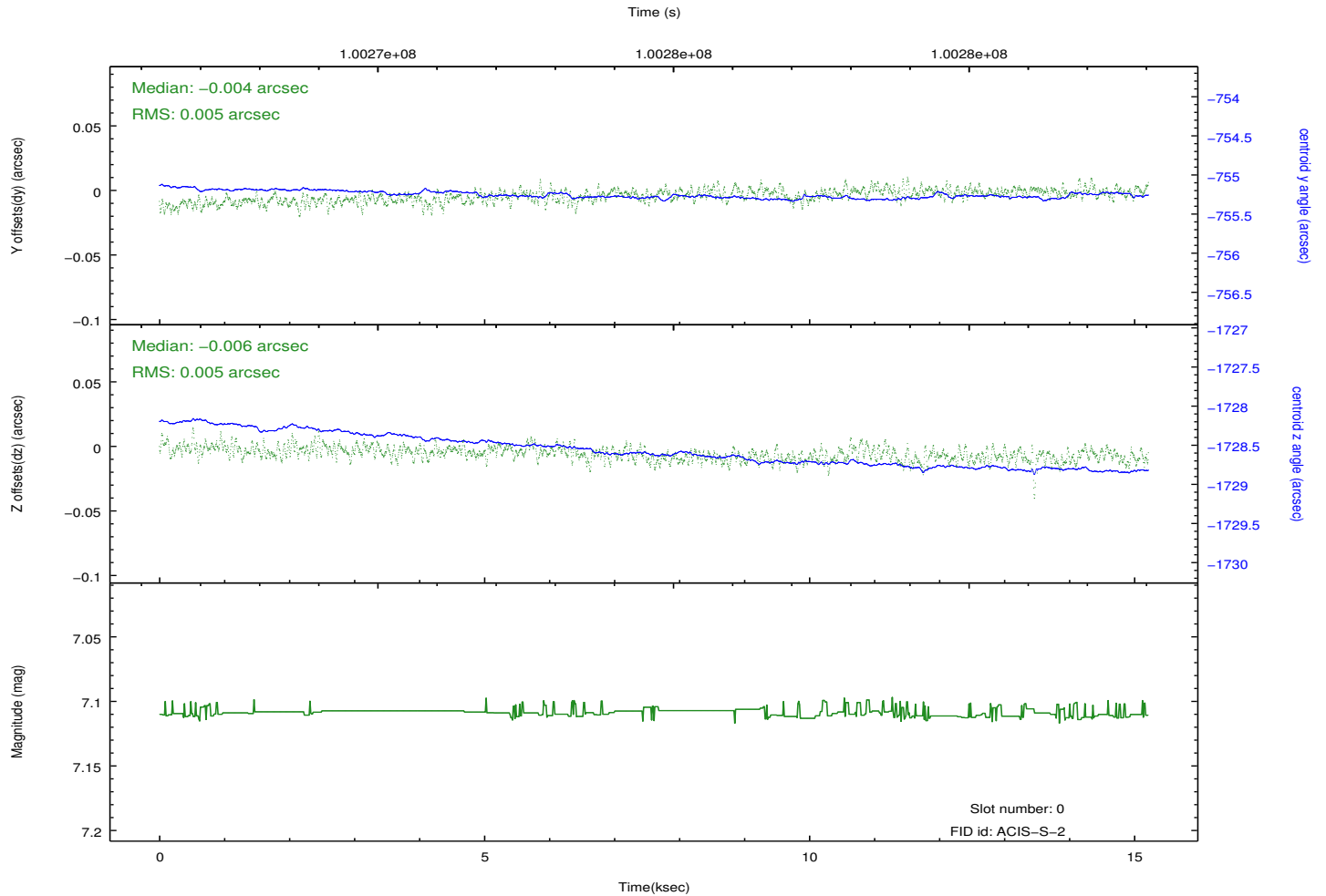
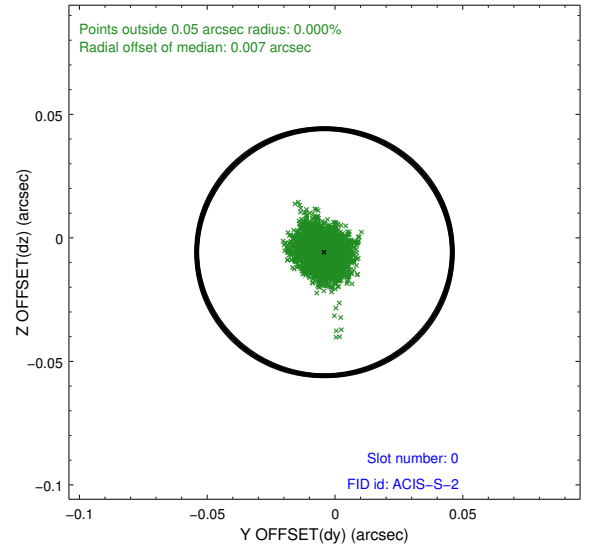
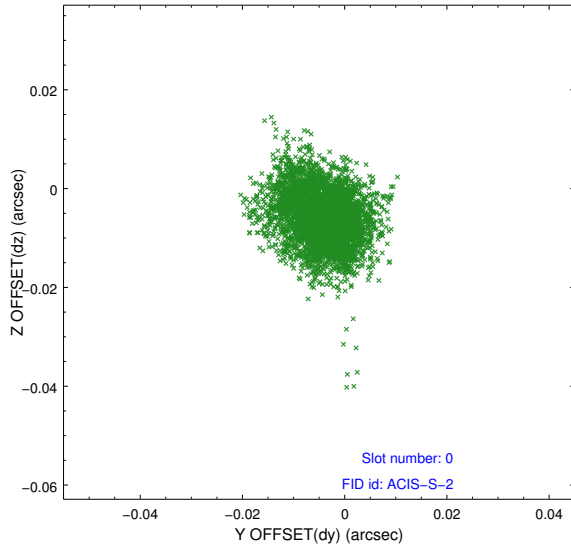


2.4.5 Slot 7

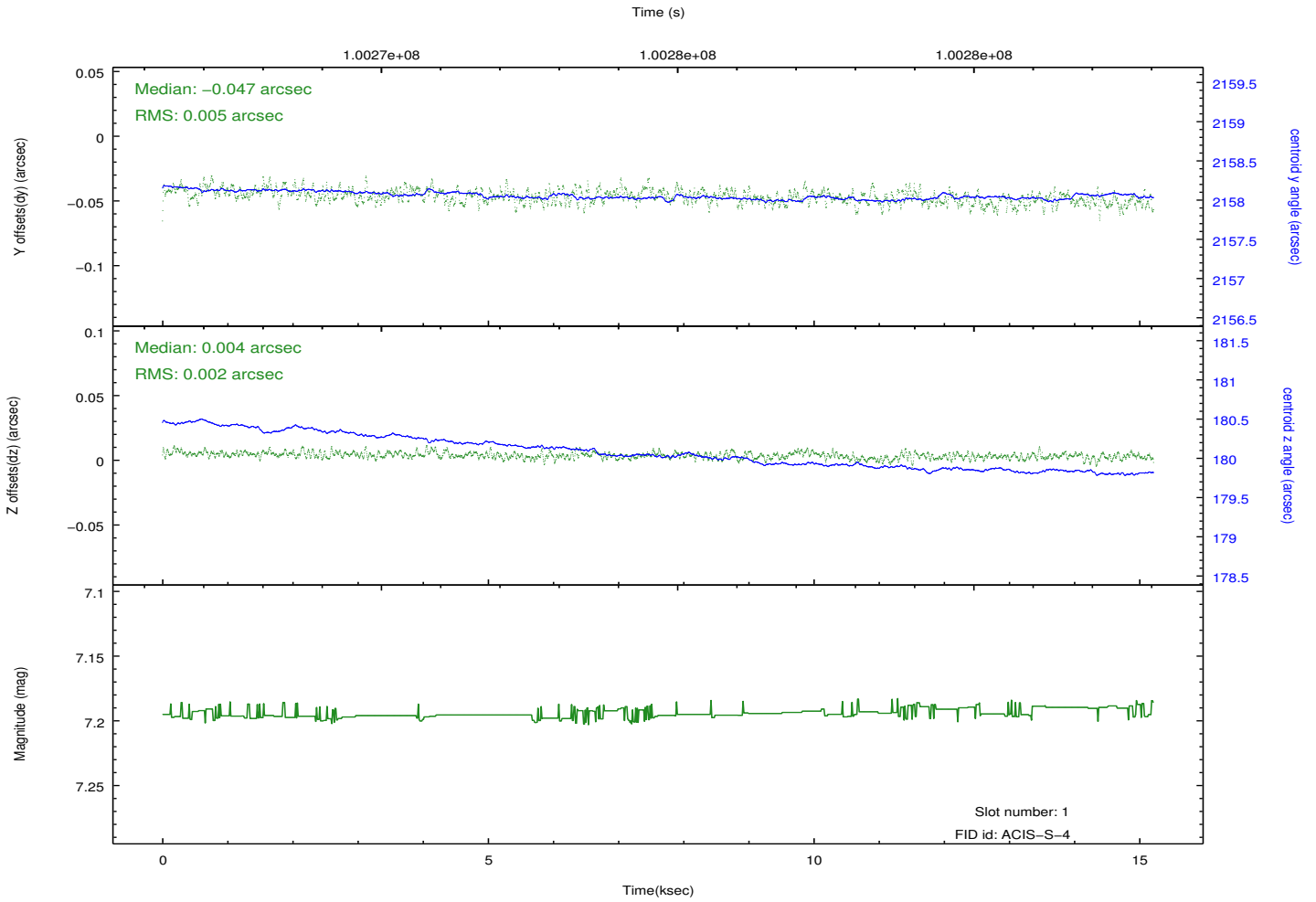
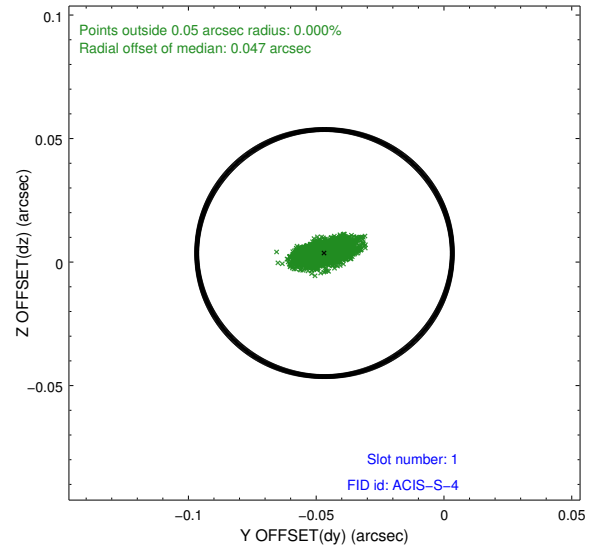
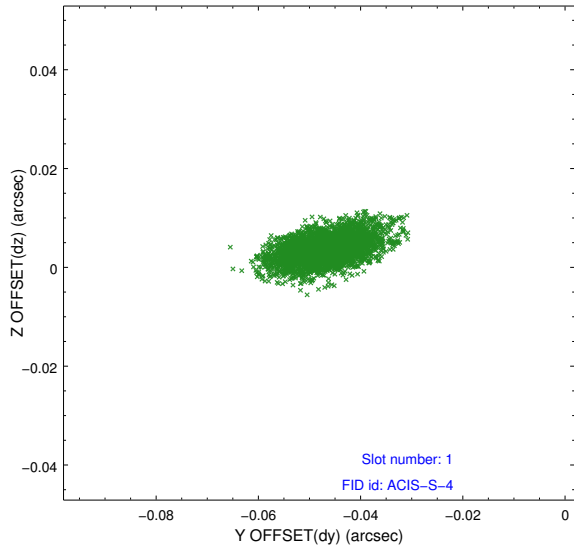


2.5 FID Slots

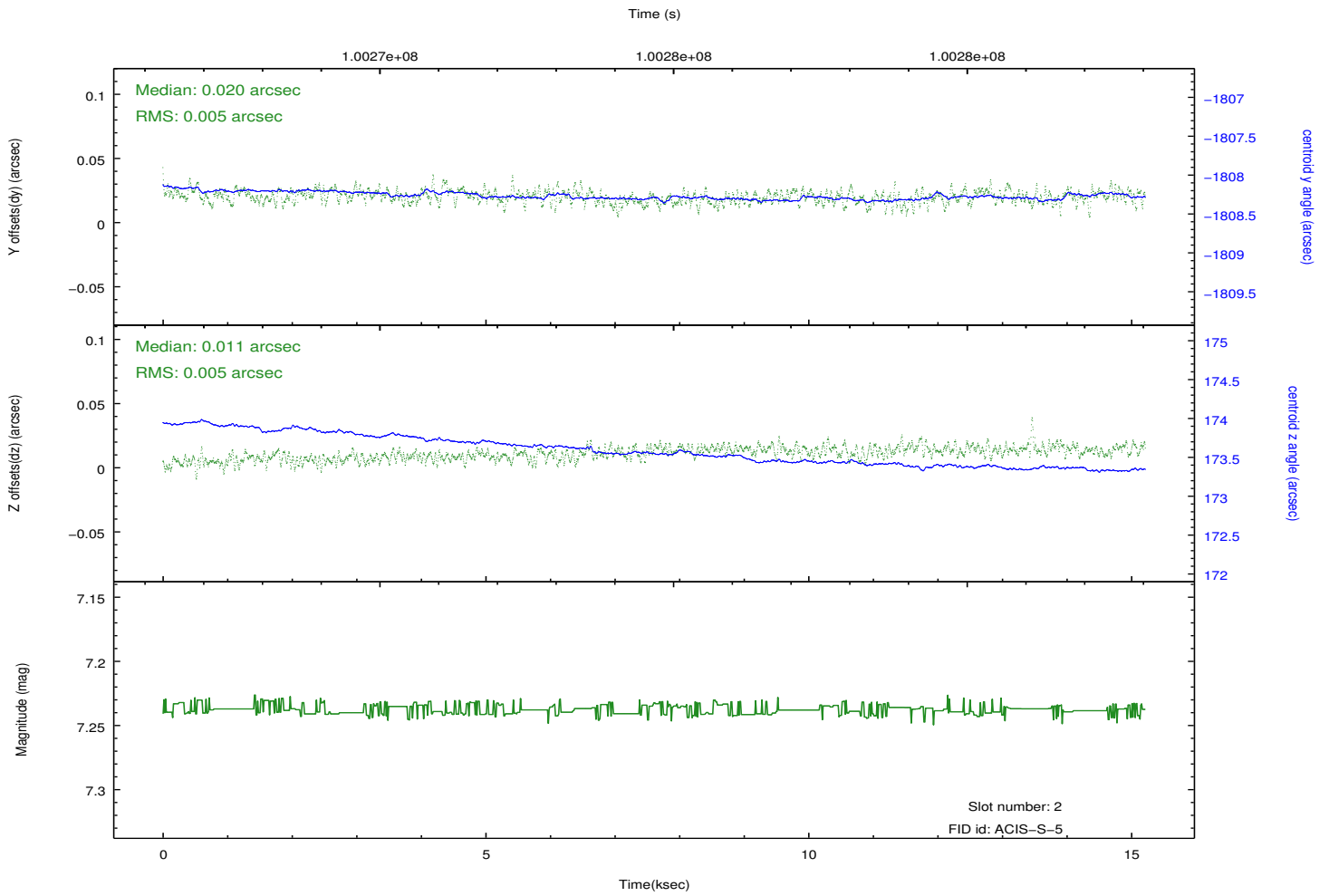
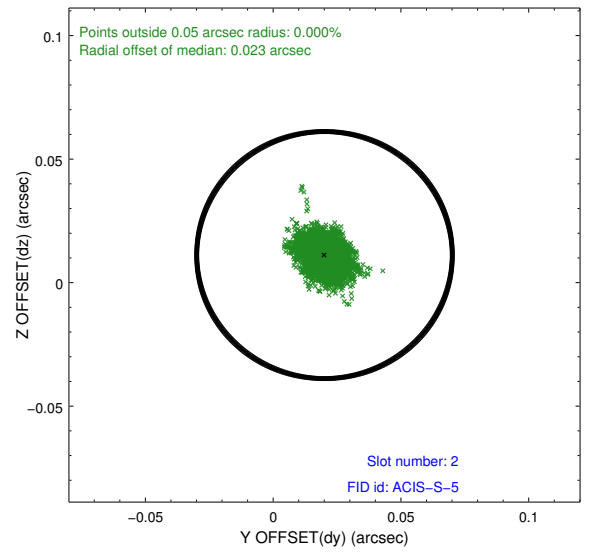
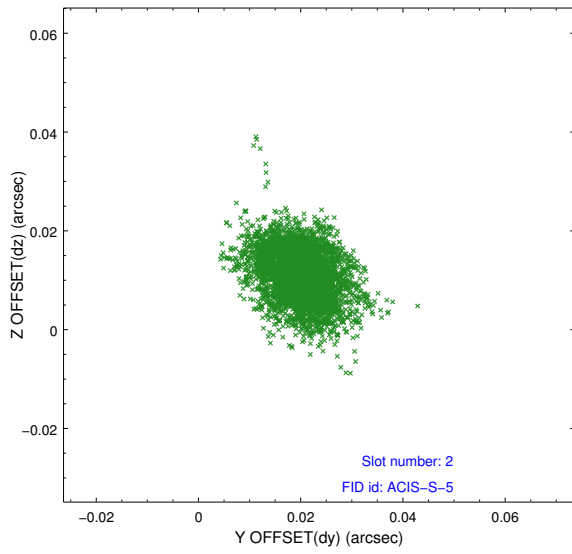
2.5.1 Slot 0



2.5.2 Slot 1



2.5.3 Slot 2



A Summary

A.1 Status

V&V Scientist	Beth Sundheim
V&V Date (YYYY-MM-DD)	2012.09.18
V&V Edition	1
V&V Disposition and Status	OK
V&V Charge Time	14.774

A.2 Comments