

V&V Reference Report

L2 ASCDS Version : 8.4.5

Observation 2127 - L2 Version 3
Chandra X-Ray Center

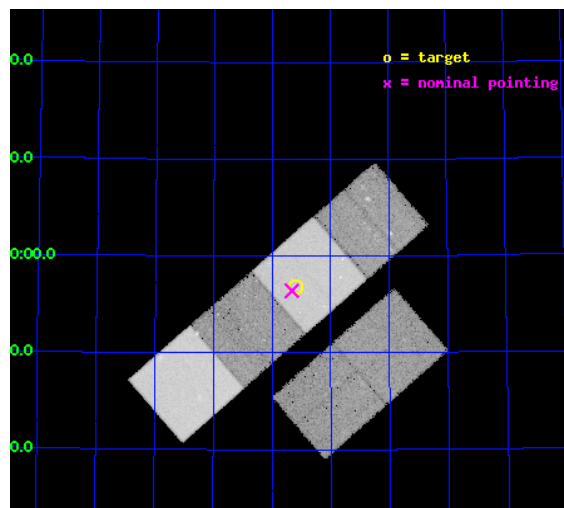
L2 Processing Date : Sep 26 2012

Contents

1	Front	2
2	OBI	3
2.1	OBI	3
2.1.1	Images	3
2.1.2	Bias	3
2.1.3	Parameters	4
2.1.4	Events	4
2.2	Compared Parameters	5
2.3	Aspect	6
2.4	Star Slots	9
2.4.1	Slot 3	9
2.4.2	Slot 4	10
2.4.3	Slot 5	11
2.4.4	Slot 6	12
2.4.5	Slot 7	13
2.5	FID Slots	14
2.5.1	Slot 0	14
2.5.2	Slot 1	15
2.5.3	Slot 2	16
A	Summary	17
A.1	Status	17
A.2	Comments	17

1 Front

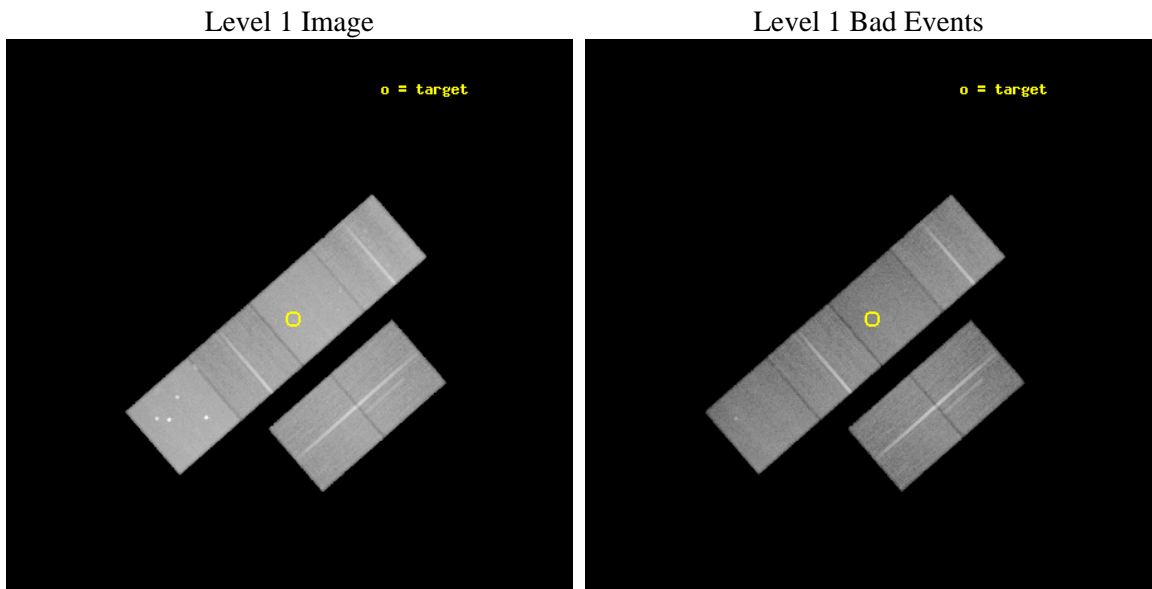
seq_num	700317	Sequence number
obs_id	2127	Observation id
title	MAGNETIC FIELD STRENGTH IN THE HOTSPOTS OF RADIO GALAXIES & QUASARS: SYNCHROTRON SELF-COMPTON EMISSION & EQUIPARTITION	Proposal title
observer	Dr Martin Hardcastle	Principal investigator
object	3C330	Source name
dtcycle	0	
cycle	P	events from which exps? Prim/Second/Both
ra_targ	242.400833	Observer's specified target RA [deg]
dec_targ	65.947889	Observer's specified target Dec [deg]
ra_nom	242.41573736452	Nominal RA [deg]
dec_nom	65.940287693256	Nominal Dec [deg]
roll_nom	318.87522355646	Nominal Roll [deg]
revision	3	Processing version of data
ontime	44751.258150518	Sum of GTIs [s]
livetime	44184.590773843	Livetime [s]
ontime2	44751.299190521	Sum of GTIs [s]
ontime3	44751.135040522	Sum of GTIs [s]
ontime5	44754.458080769	Sum of GTIs [s]
ontime6	44754.41704078	Sum of GTIs [s]
ontime7	44751.258150518	Sum of GTIs [s]
ontime8	44751.094030425	Sum of GTIs [s]
l2events	422330	Number of level 2 events



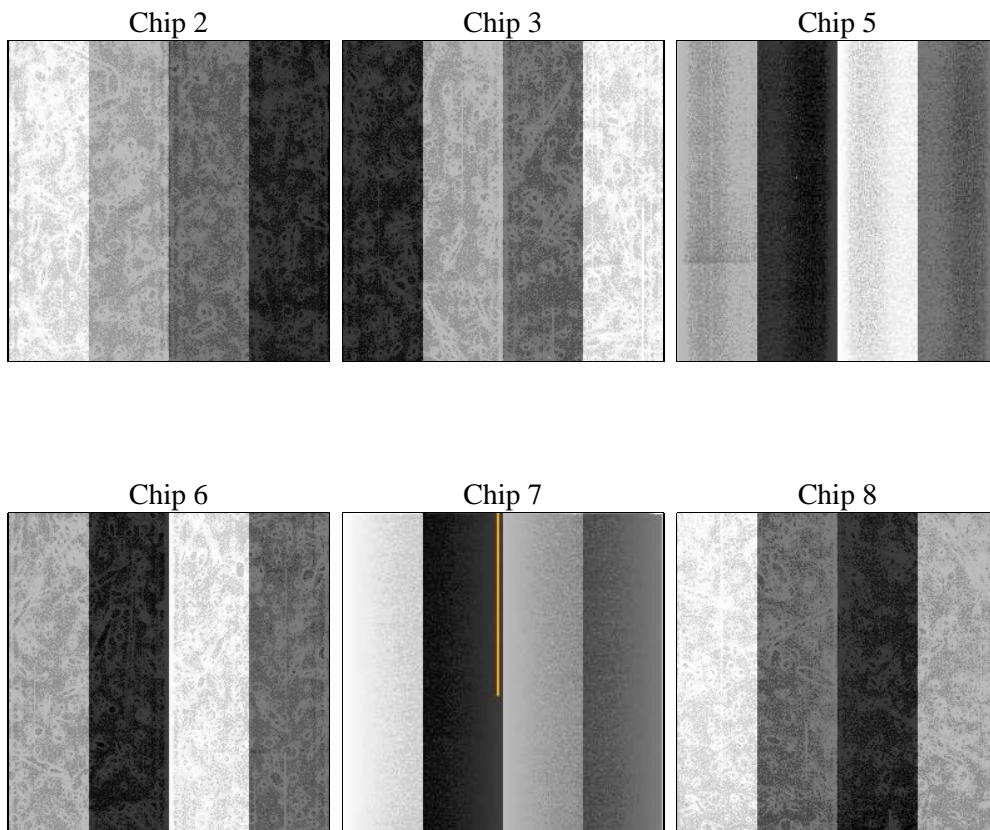
2 OBI

2.1 OBI

2.1.1 Images



2.1.2 Bias



2.1.3 Parameters

obi_num	0	Obi number	sched_exp_time	45000.000000	[s] Scheduled observation exposure time
ascdsver	8.4.5	Processing system revision	ontime	44751.258150518	Sum of GTIs [s]
caldbver	4.5.1.1	 	ontime2	44751.299190521	Sum of GTIs [s]
date	2012-09-26T01:32:52	Date and time of file creation	ontime3	44751.135040522	Sum of GTIs [s]
revision	3	Processing version of data	ontime5	44754.458080769	Sum of GTIs [s]
			ontime6	44754.41704078	Sum of GTIs [s]
			ontime7	44751.258150518	Sum of GTIs [s]
			ontime8	44751.094030425	Sum of GTIs [s]
			l1events	1914629	Number of level 1 events

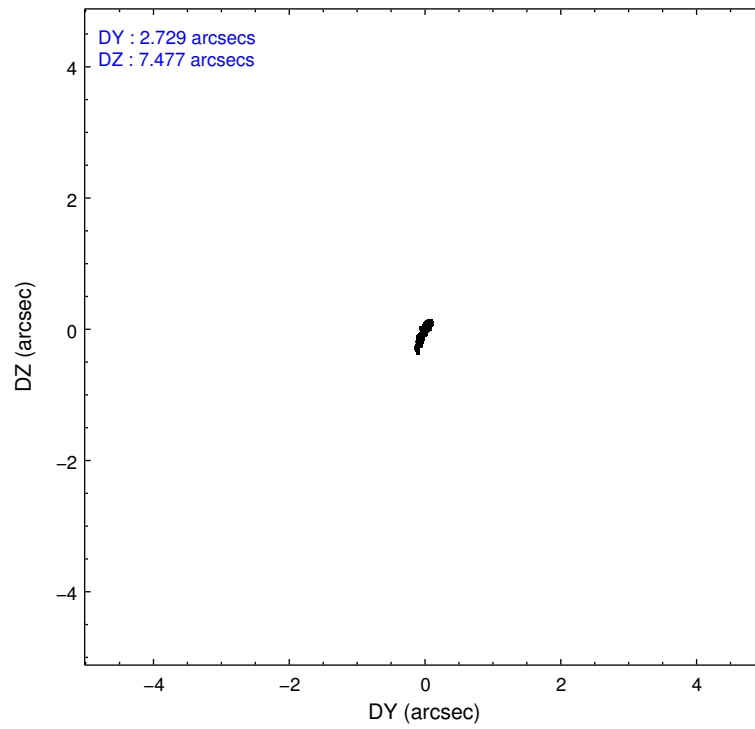
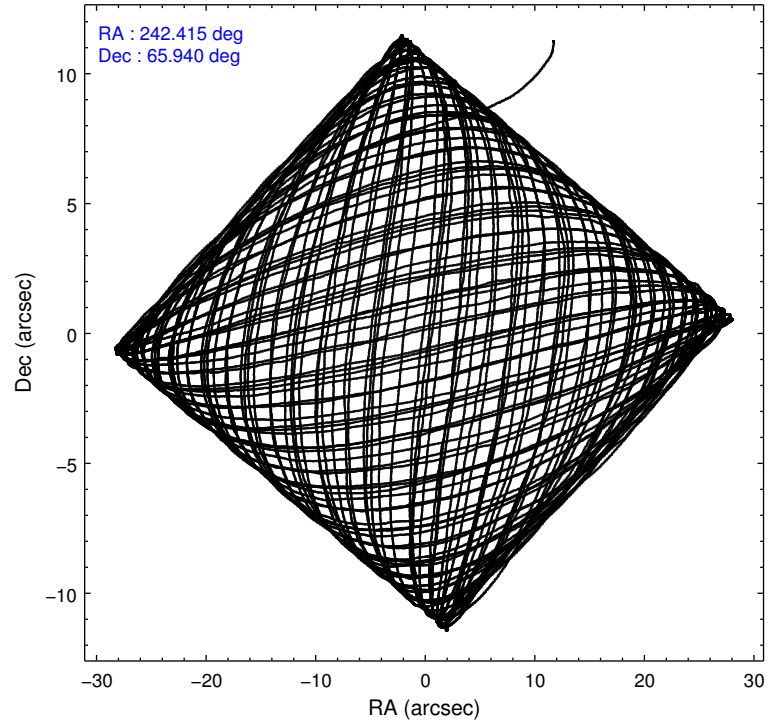
2.1.4 Events

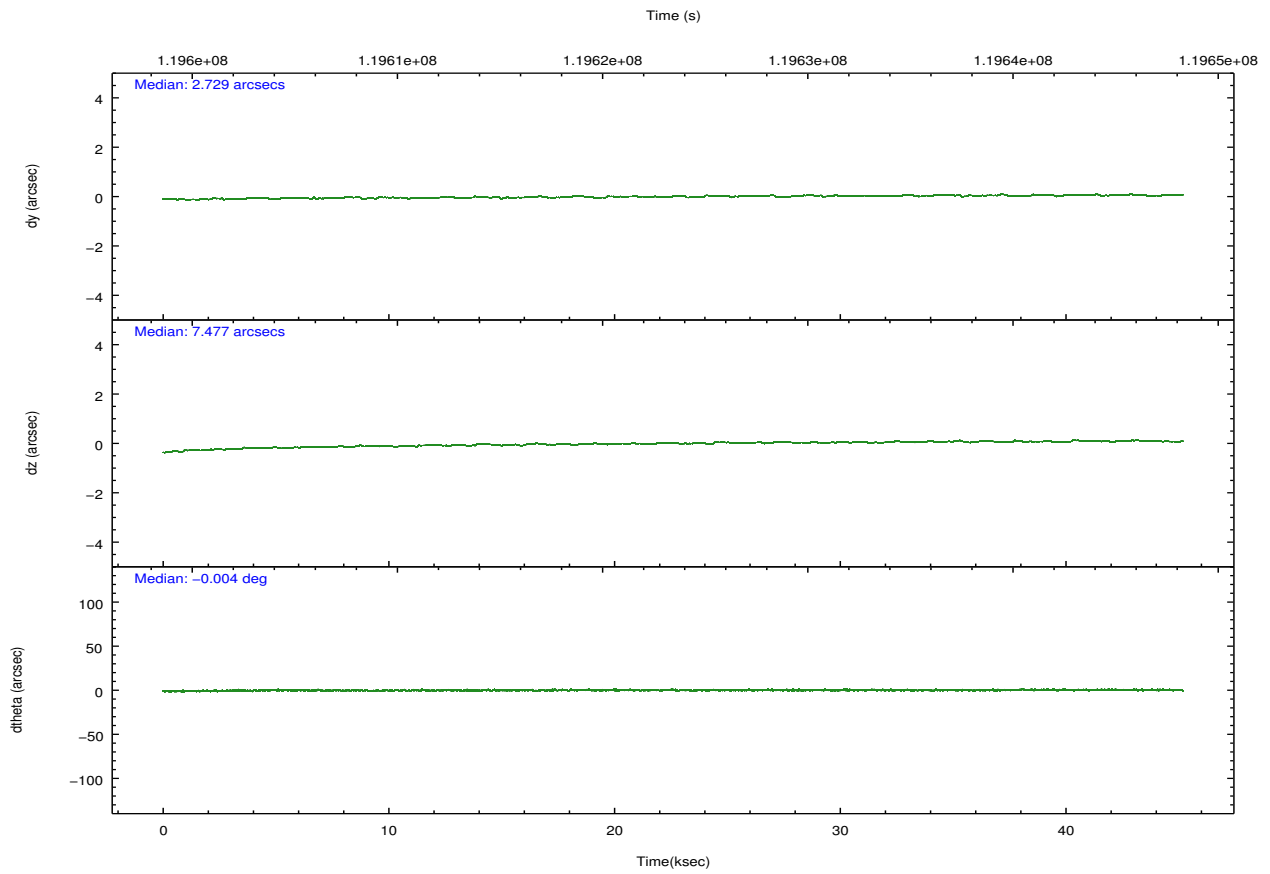
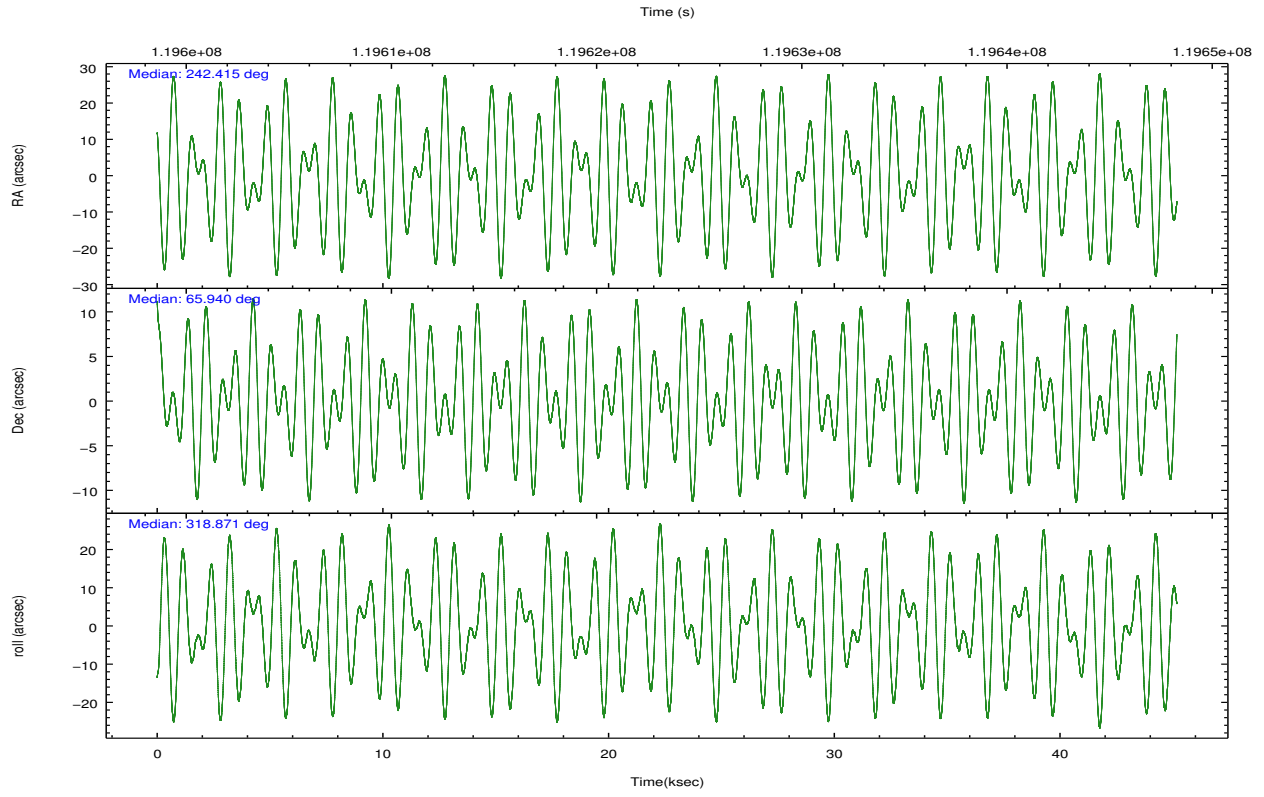
	ccd 2	ccd 3	ccd 5	ccd 6	ccd 7	ccd 8		ccd 2	ccd 3	ccd 5	ccd 6	ccd 7	ccd 8
level 1 events	276533	262826	399753	274471	351935	349111	grade 0 events	13215	12683	34178	12959	14429	22574
rejected events	245601	232579	208032	242146	204914	278310		4%	4%	8%	4%	4%	6%
rejected %	88%	88%	52%	88%	58%	79%	grade 1 events	106	124	1095	102	325	186
								0%	0%	0%	0%	0%	0%
							grade 2 events	6528	6088	50383	6520	28805	15171
								2%	2%	12%	2%	8%	4%
							grade 3 events	2909	3024	7695	3195	13258	7683
								1%	1%	1%	1%	3%	2%
							grade 4 events	2863	2993	7431	3191	13315	7053
								1%	1%	1%	1%	3%	2%
							grade 5 events	9555	10490	29189	11858	33716	14787
								3%	3%	7%	4%	9%	4%
							grade 6 events	5417	5465	92045	6465	77224	18323
								1%	2%	23%	2%	21%	5%
							grade 7 events	235940	221959	177737	230181	170863	263334
								85%	84%	44%	83%	48%	75%

2.2 Compared Parameters

Parameter	Planned	Actual	Parameter	Planned	Actual
Instrument	ACIS	ACIS	Obspar format version number	7	7
Detector	ACIS-235678	ACIS-235678	Obspar file type	PREDICTED	ACTUAL
Grating	NONE	NONE	Obspar update status	NONE	UPDATED
Data mode	FAINT	FAINT	Number of optional ACIS chips dropped	0	0
Observation mode	POINTING	POINTING	On-chip summing requested	N	N
[deg] Pointing RA	242.349975	242.4157373645245	Subarray requested	NONE	NONE
[deg] Pointing Dec	65.945221	65.94028769325612	Alternating exposures requested	N	N
[deg] Pointing Roll	318.778649	318.8752235564647	[s] Primary exposure time	0.000000	3.2
[mm] SIM focus pos	-0.684267	-0.6828225247311905			
[mm] SIM defocus	0	0.001444936568705701			
[mm] SIM translation stage pos	-190.132523	-190.1425803651734			
[mm] SIM translation stage offset	0	0.01005778216563158			
[s] Observation start time (MET)	119601020.184000	119600202.24702			
Observation start date	2001-10-16T06:29:16	2001-10-16T06:16:42			
[s] Observation end time (MET)	119646020.184000	119646680.36136			
Observation end date	2001-10-16T18:59:16	2001-10-16T19:11:20			
Read mode	TIMED	TIMED			

2.3 Aspect



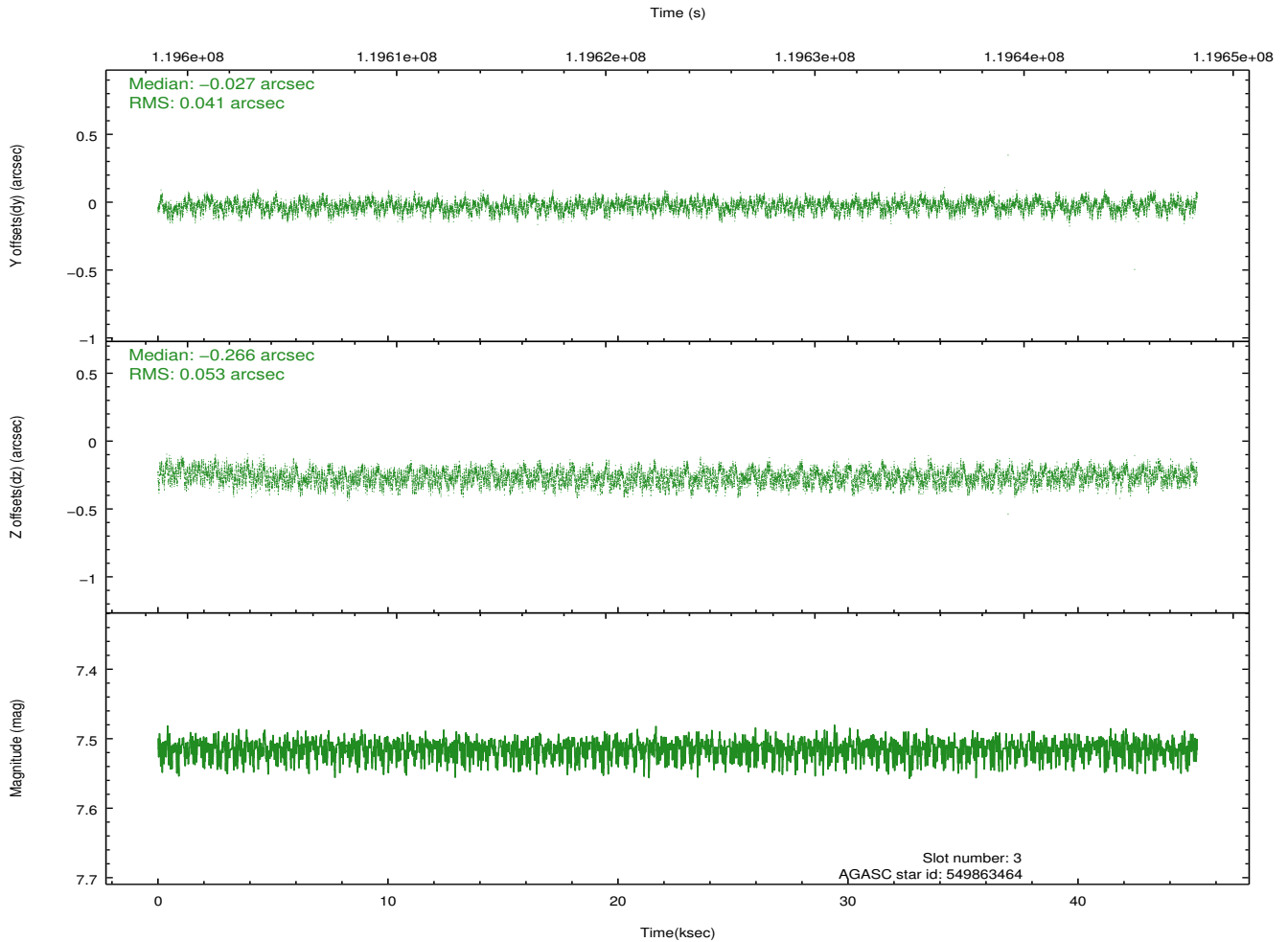
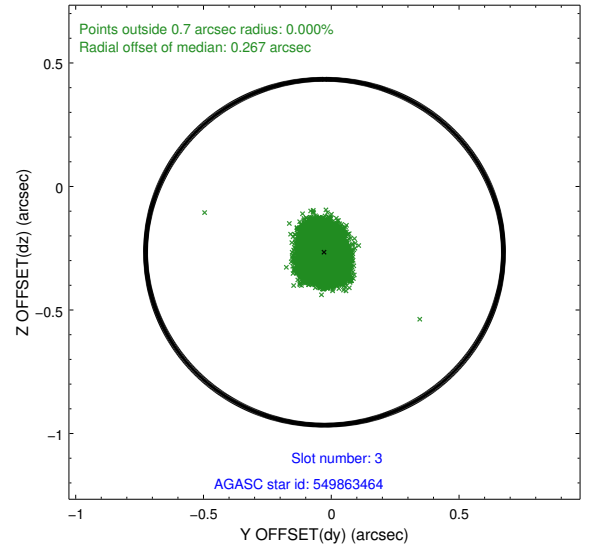
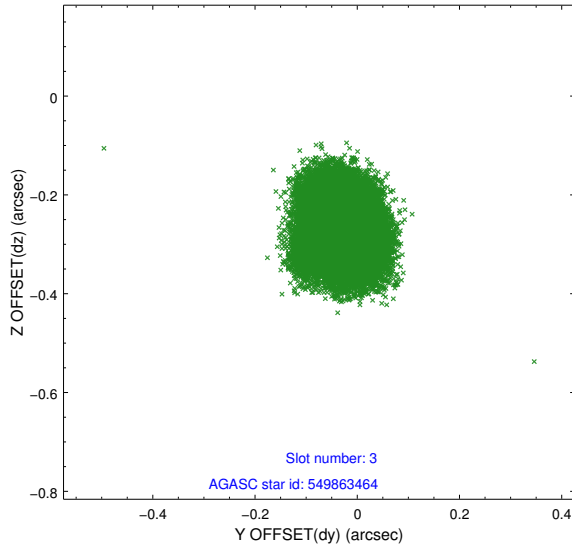


Slot Statistics

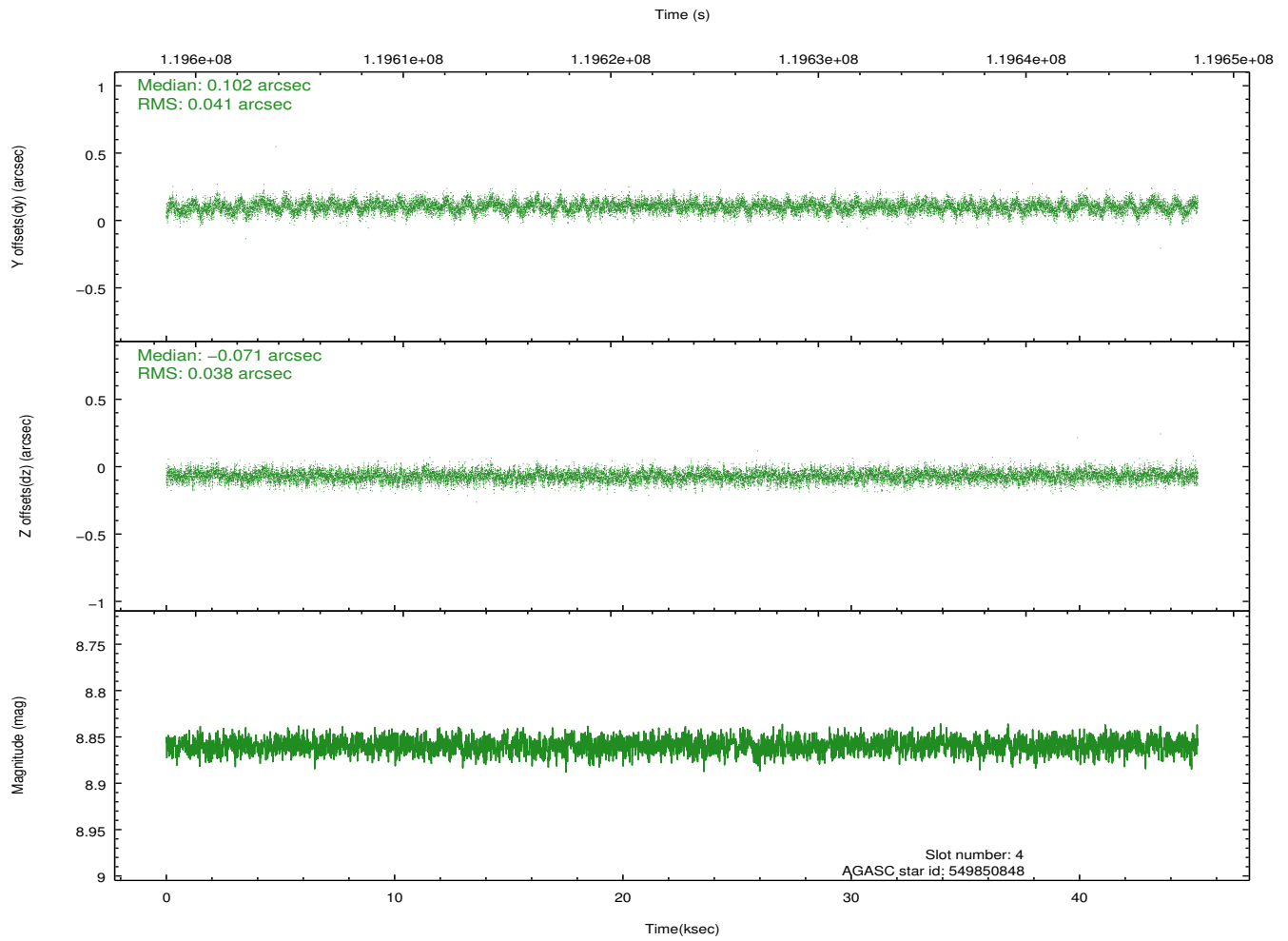
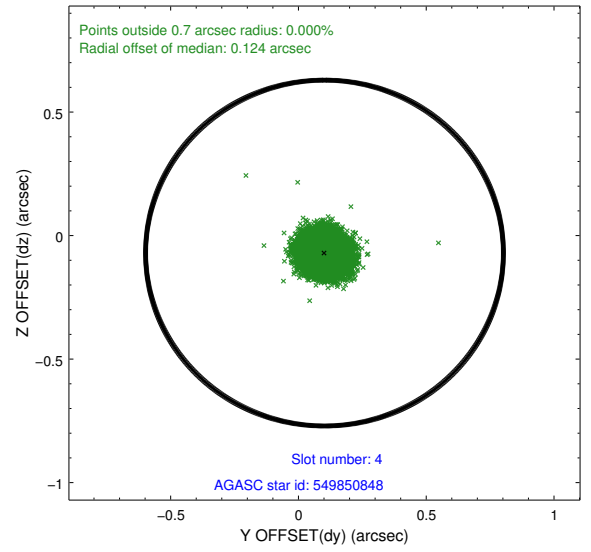
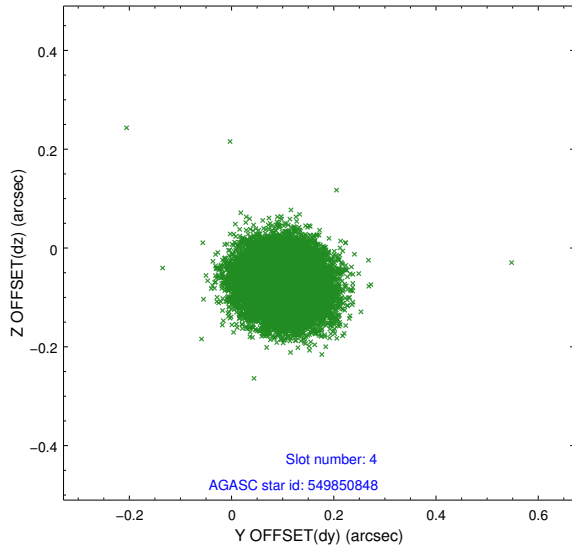
slot	status	id	mag	n_pts	med_dy	med_dz	dr1	dr2	ra	dec	mean_y	mean_z
0	FID	ACIS-S-2	7.11	11019	0.016	0.020	0.007	0.032	0.000000	0.000000	-755.34	-1728.56
1	FID	ACIS-S-4	7.20	11019	-0.028	-0.012	0.007	0.020	0.000000	0.000000	2157.89	179.90
2	FID	ACIS-S-6	7.36	11019	-0.016	0.000	0.008	0.016	0.000000	0.000000	406.61	817.30
3	GUIDE	549863464	7.51	22039	-0.027	-0.266	0.073	0.113	243.630740	66.376841	353.77	2400.72
4	GUIDE	549850848	8.86	22031	0.102	-0.071	0.059	0.096	241.459219	66.322658	-1869.20	180.78
5	GUIDE	549849656	9.20	22023	0.011	0.095	0.132	0.209	240.650889	65.694358	-1320.08	-2311.98
6	GUIDE	549849376	8.91	22037	-0.012	0.174	0.070	0.113	240.870587	65.717688	-1123.64	-2039.30
7	GUIDE	549857088	9.43	22021	-0.071	0.064	0.105	0.172	244.225588	65.817892	2355.50	1509.54

2.4 Star Slots

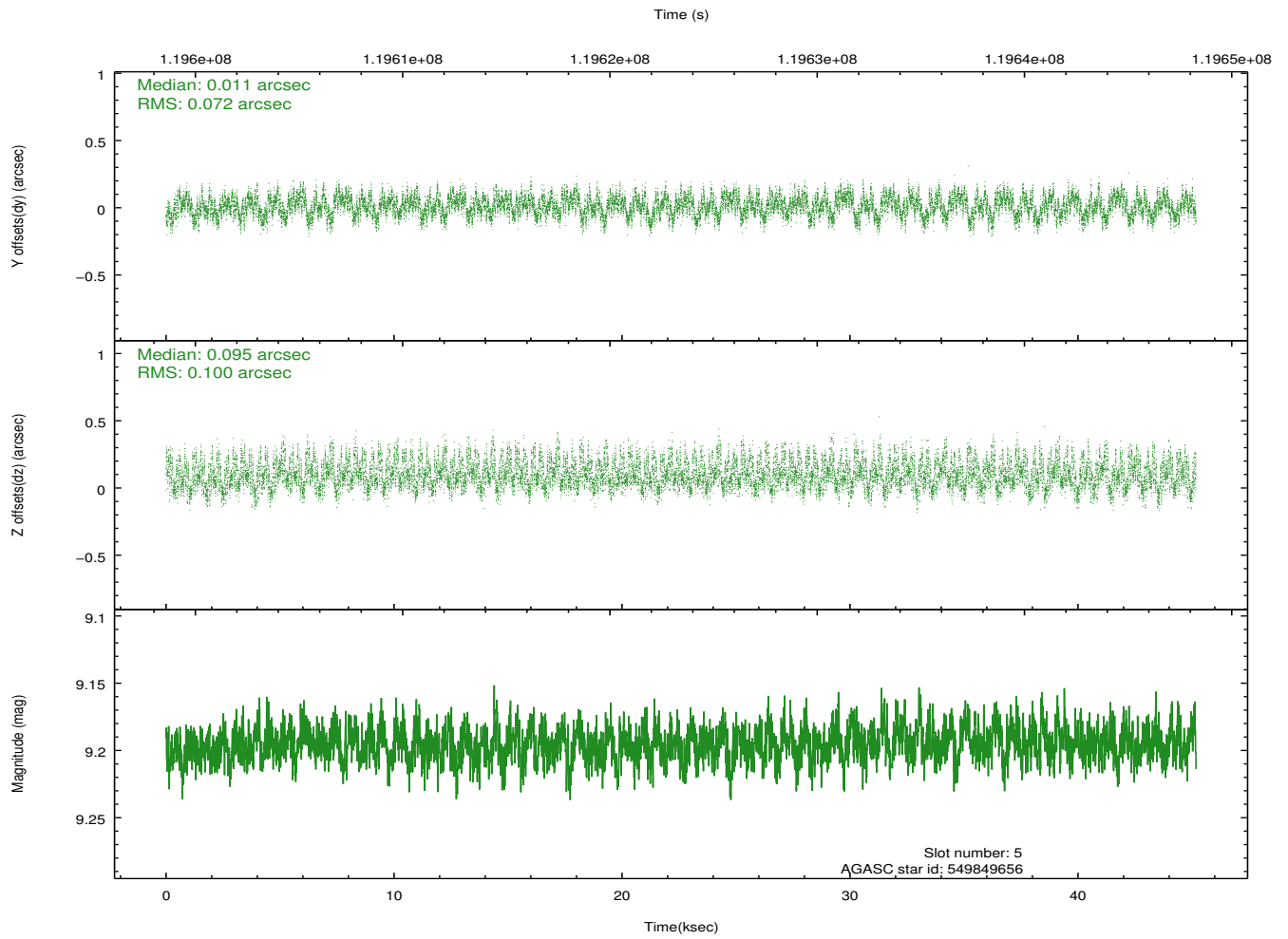
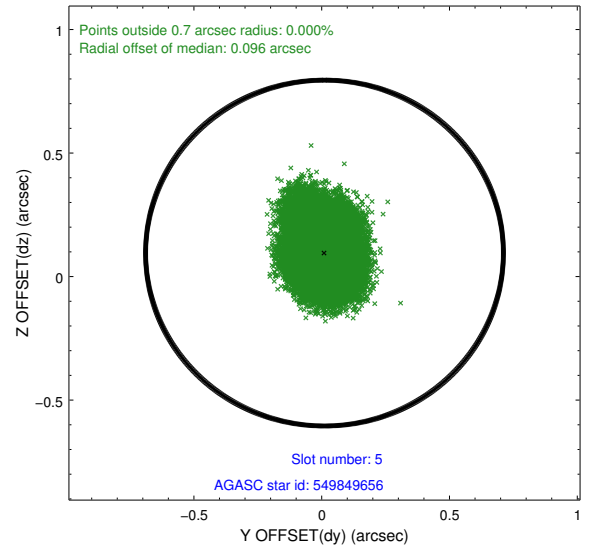
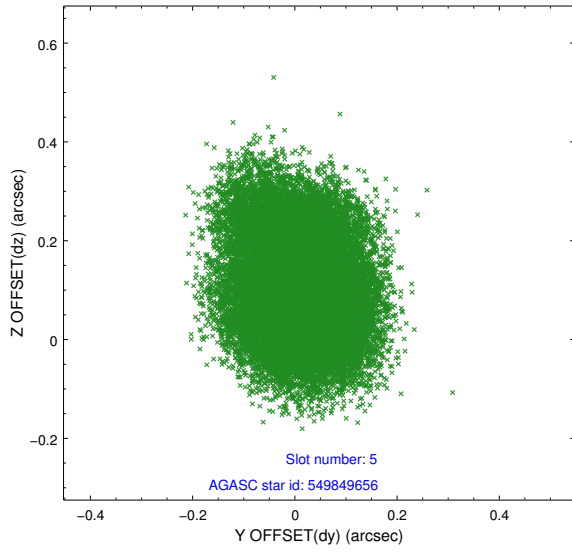
2.4.1 Slot 3



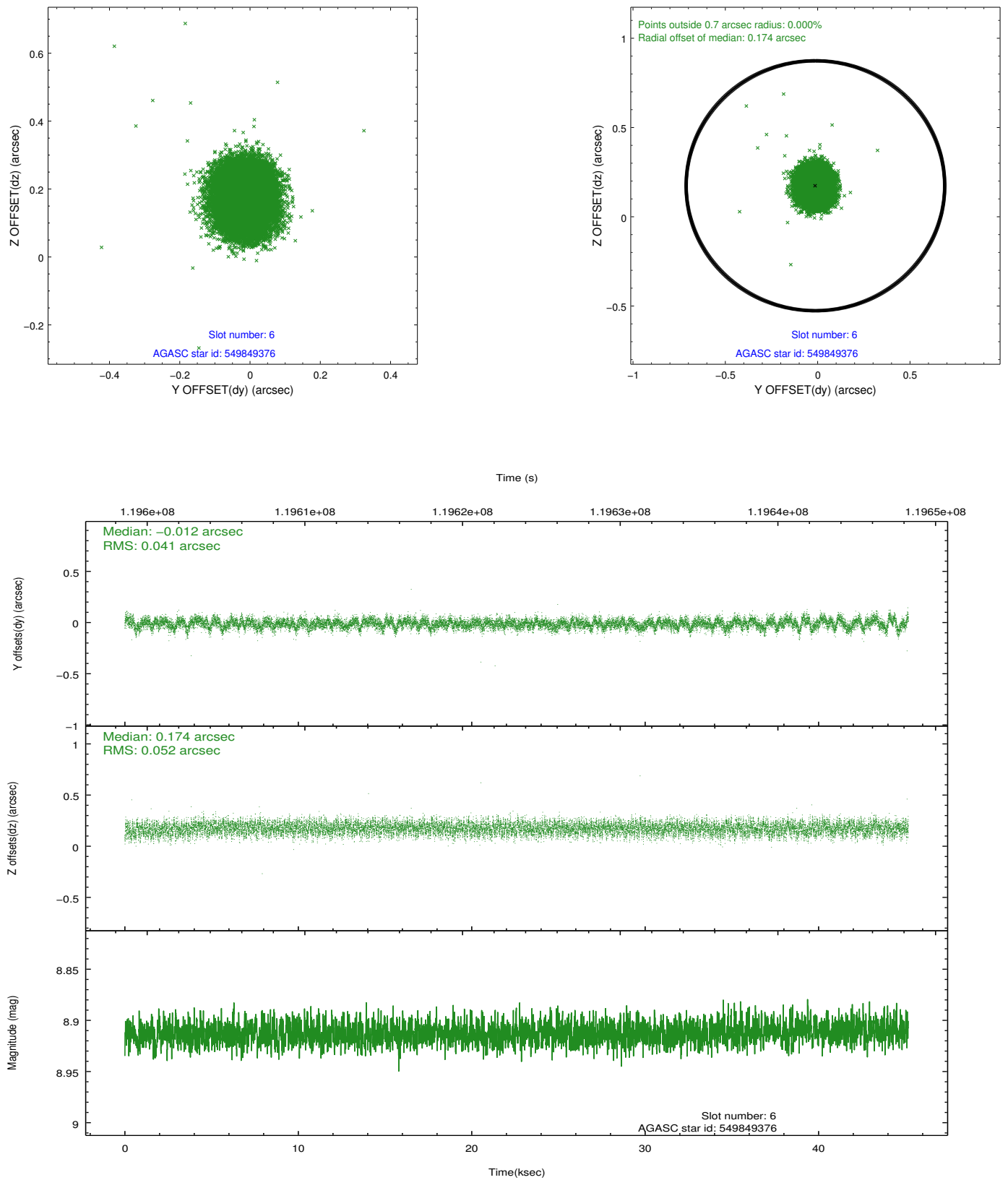
2.4.2 Slot 4



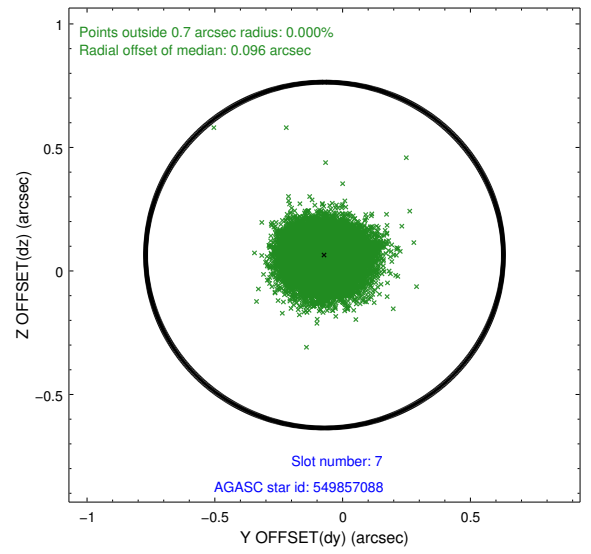
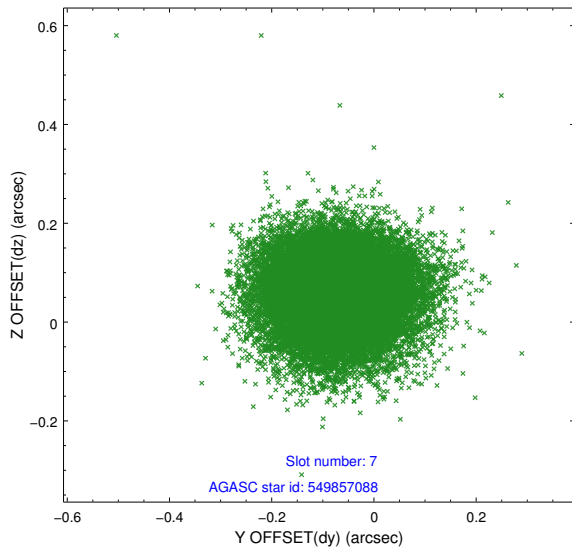
2.4.3 Slot 5



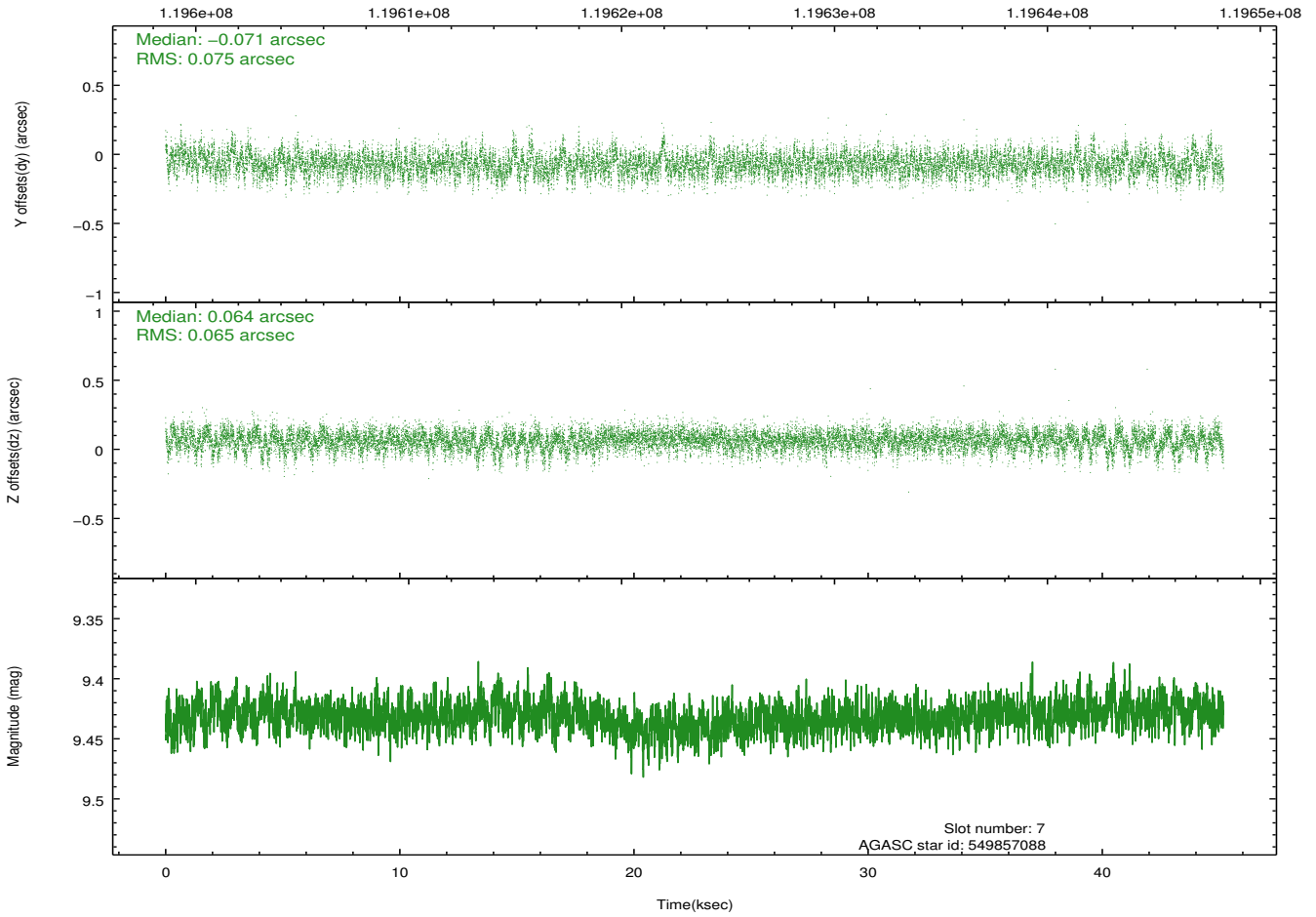
2.4.4 Slot 6



2.4.5 Slot 7

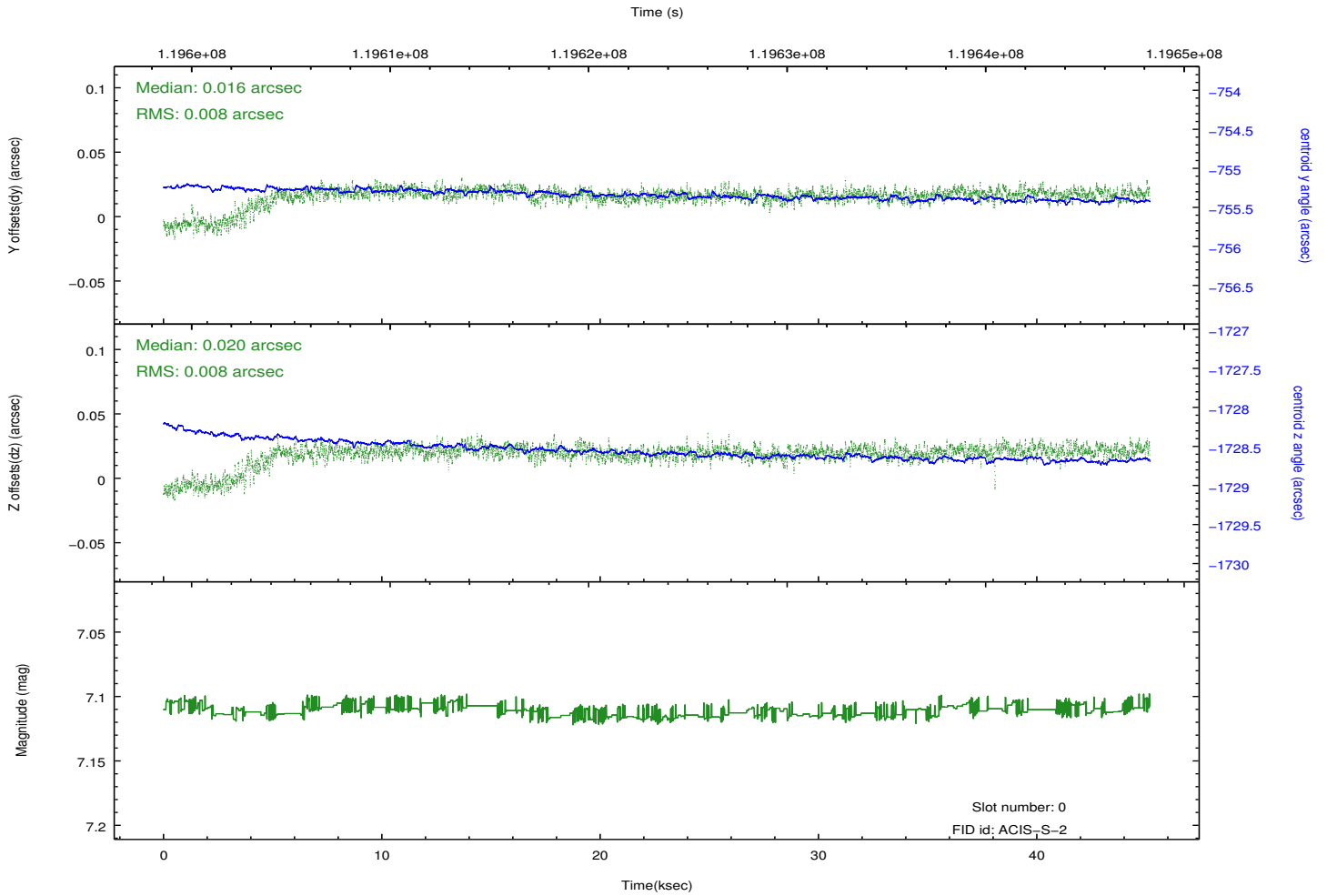
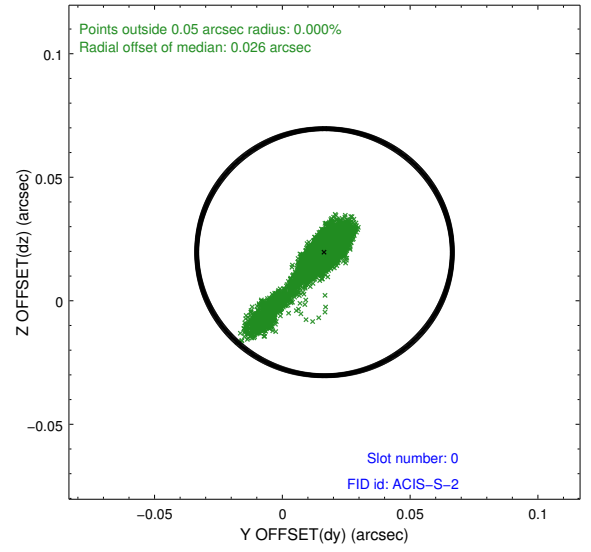
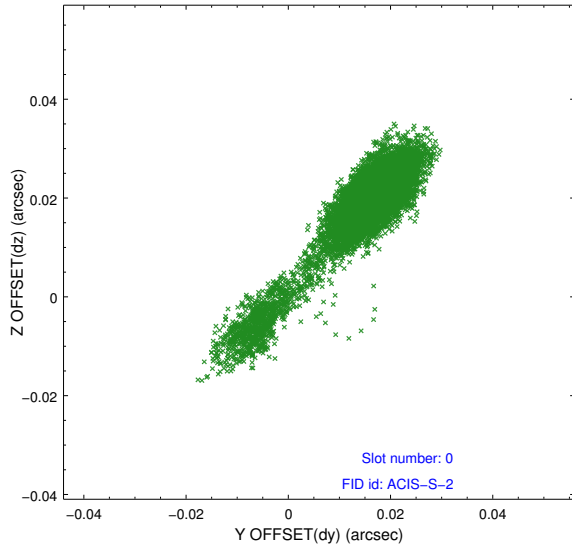


Time (s)

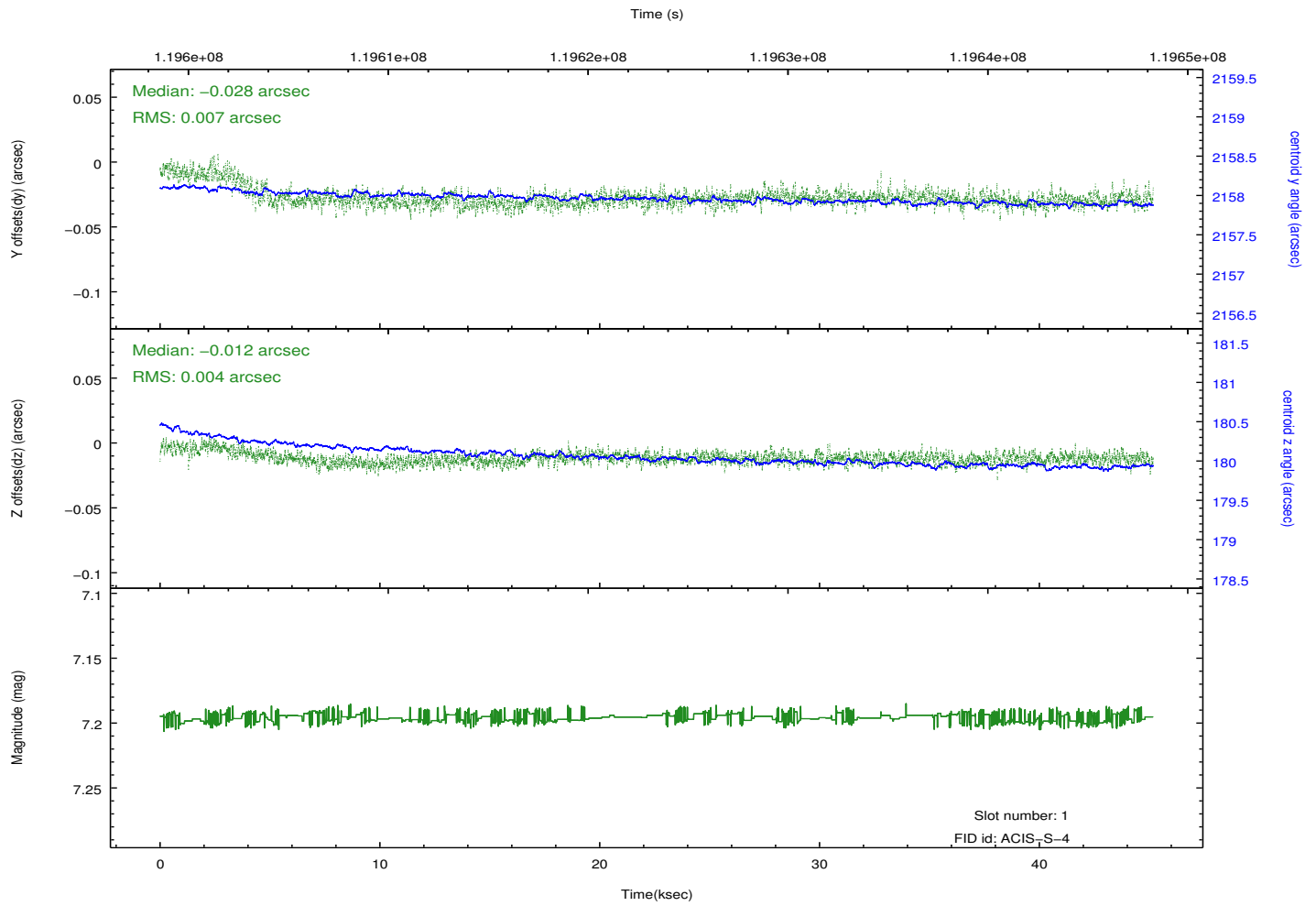
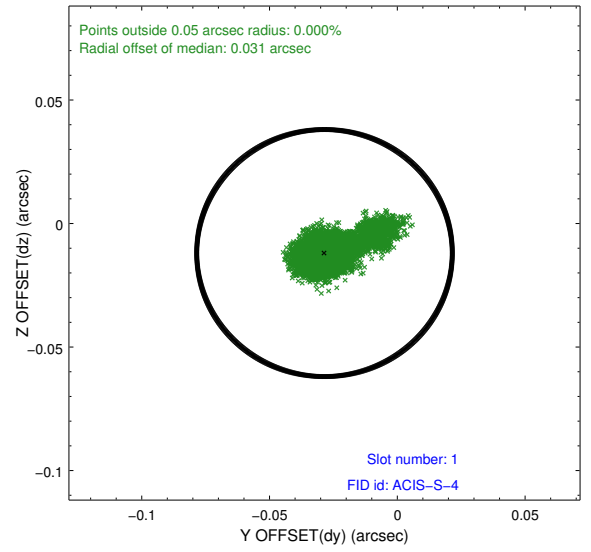
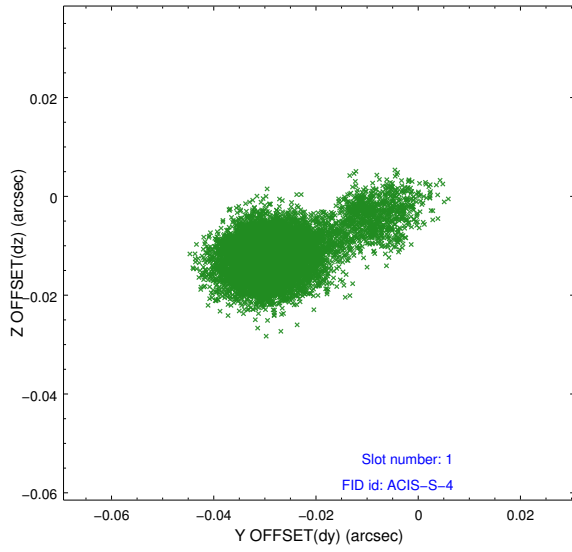


2.5 FID Slots

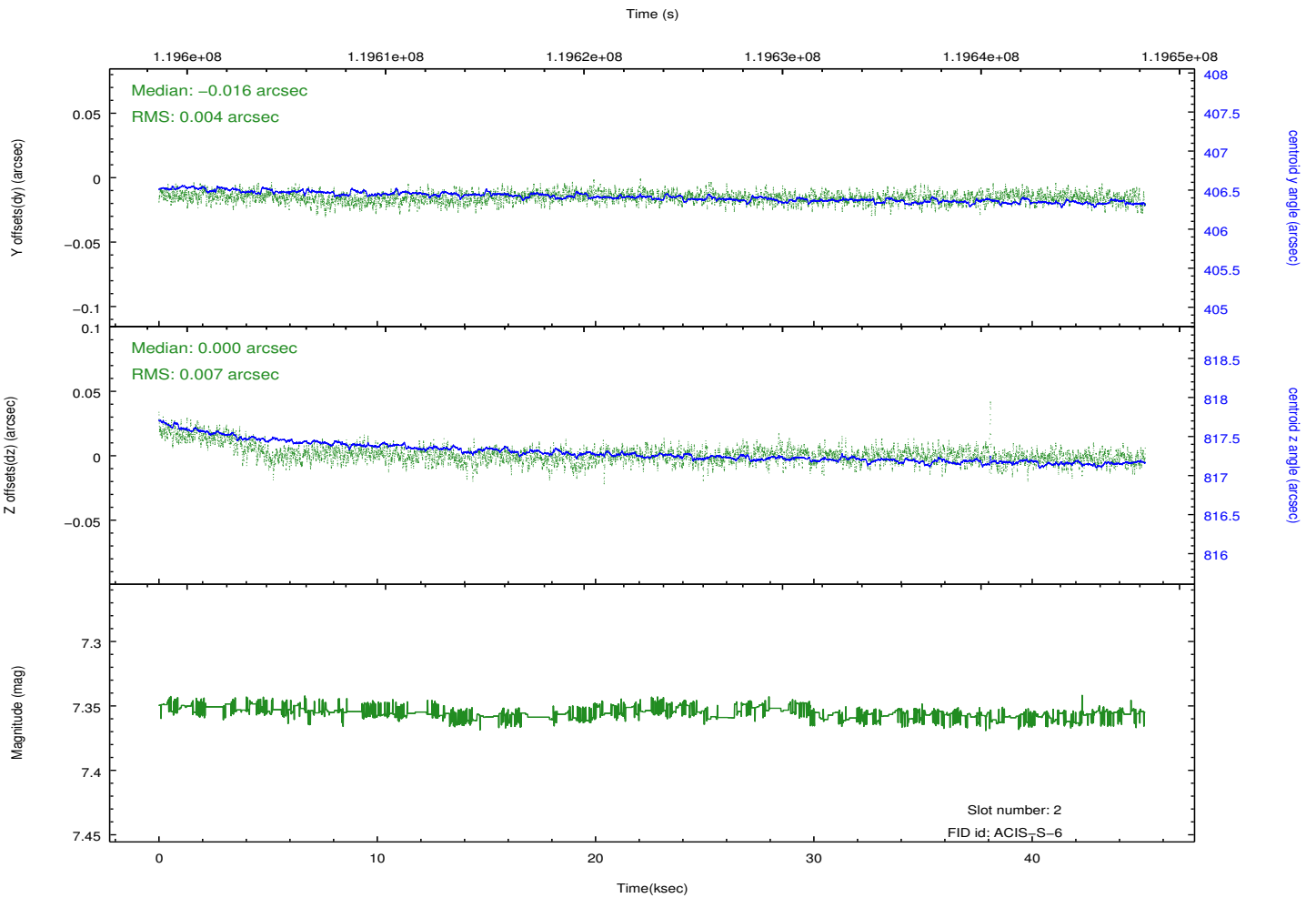
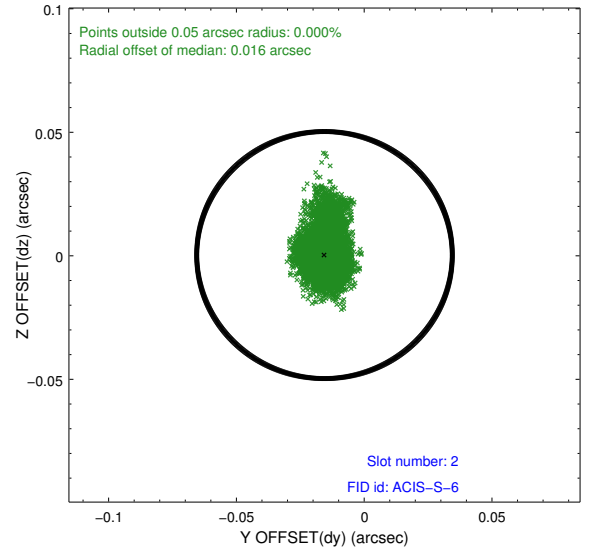
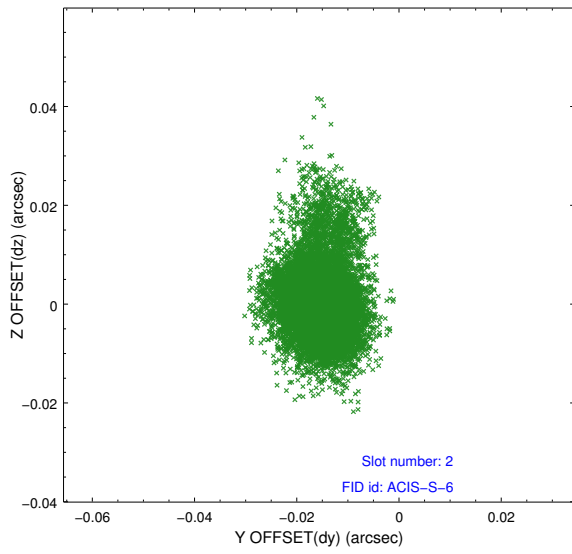
2.5.1 Slot 0



2.5.2 Slot 1



2.5.3 Slot 2



A Summary

A.1 Status

V&V Scientist	Jen Lauer
V&V Date (YYYY-MM-DD)	2012.09.27
V&V Edition	1
V&V Disposition and Status	OK
V&V Charge Time	44.648

A.2 Comments

Charge time for this ObsId remains at previous value of 44.648 ks although with the current processing the charge time would have been 44.75 ksec.