

# V&V Reference Report

## L2 ASCDS Version : 8.4.5

Observation 2797 - L2 Version 4  
Chandra X-Ray Center

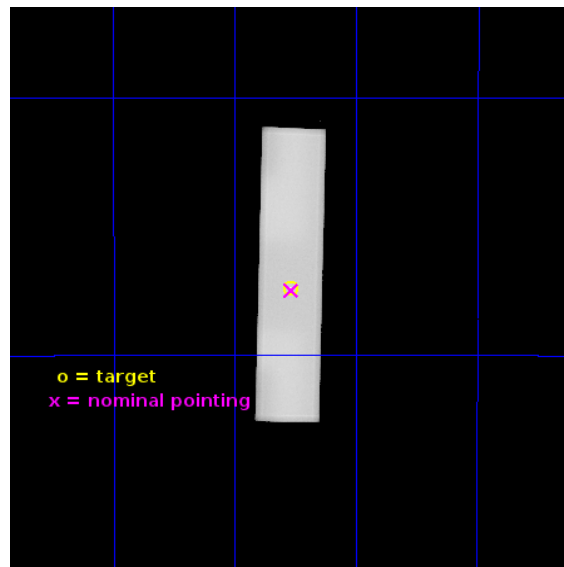
L2 Processing Date : Jun 28 2013

## Contents

<b>1</b>	<b>Front</b>	<b>2</b>
<b>2</b>	<b>OBI</b>	<b>3</b>
2.1	OBI . . . . .	3
2.1.1	Images . . . . .	3
2.1.2	Parameters . . . . .	4
2.1.3	Events . . . . .	4
2.2	Compared Parameters . . . . .	5
2.3	Aspect . . . . .	6
2.4	Star Slots . . . . .	9
2.4.1	Slot 3 . . . . .	9
2.4.2	Slot 4 . . . . .	10
2.4.3	Slot 5 . . . . .	11
2.4.4	Slot 6 . . . . .	12
2.4.5	Slot 7 . . . . .	13
2.5	FID Slots . . . . .	14
2.5.1	Slot 0 . . . . .	14
2.5.2	Slot 1 . . . . .	15
2.5.3	Slot 2 . . . . .	16
<b>A</b>	<b>Summary</b>	<b>17</b>
A.1	Status . . . . .	17
A.2	Comments . . . . .	17

# 1 Front

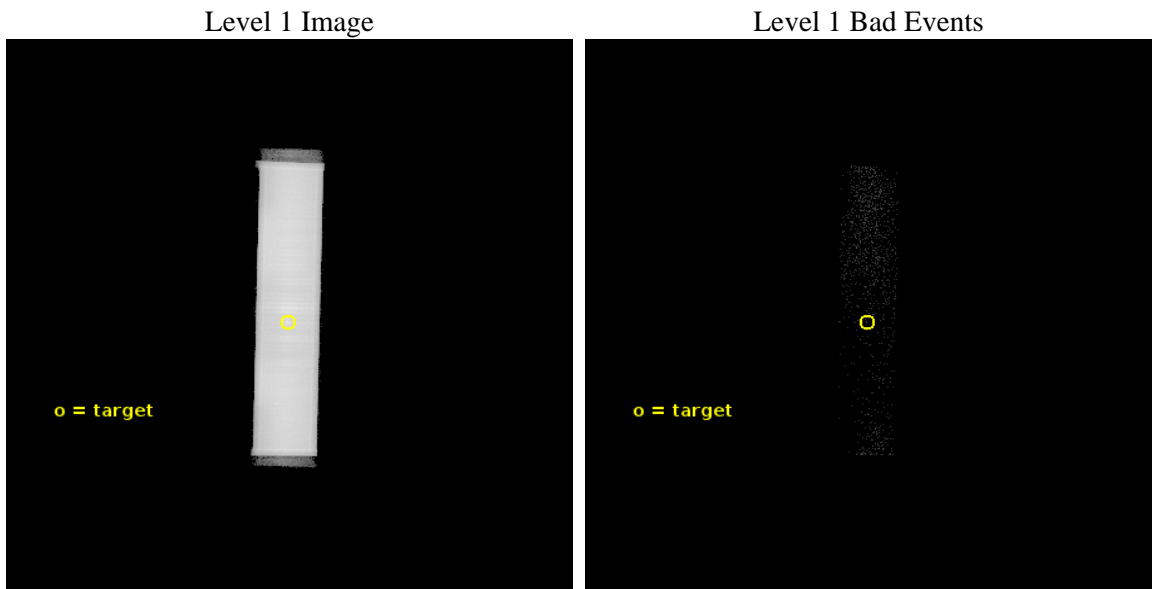
seq_num	500247	Sequence number
obs_id	2797	Observation id
title	BRIDGING THE GAP: DISCOVERING THE INTER-PULSE EMISSION IN PSR B1821-24	Proposal title
observer	Prof. Robert Rutledge	Principal investigator
object	PSR B1821-24	Source name
ra_targ	276.133333	Observer's specified target RA [deg]
dec_targ	-24.869639	Observer's specified target Dec [deg]
ra_nom	276.13329923279	Nominal RA [deg]
dec_nom	-24.874318032261	Nominal Dec [deg]
roll_nom	271.24328222296	Nominal Roll [deg]
revision	4	Processing version of data
ontime	49374.252053827	[s]
livetime	48281.043255736	Ontime multiplied by DTCOR
l2events	2975269	Number of level 2 events



## 2 OBI

### 2.1 OBI

#### 2.1.1 Images



### 2.1.2 Parameters

obi_num	1	Obi number	sched_exp_time	49400.000000	[s] Scheduled observation exposure time
ascdsver	10	Processing system revision	ontime	49374.252053827	[s]
caldsver	4.5.7	&#160	l1events	3717617	Number of level 1 events
date	2013-06-29T00:18:24	Date and time of file creation			
revision	4	Processing version of data			

### 2.1.3 Events

Level 1 Events

	<b>segment 1</b>	<b>segment 2</b>	<b>segment 3</b>
level 1 events	2947	3714663	7
rejected events	1	5271	0
rejected %	0%	0%	0%

## 2.2 Compared Parameters

Parameter	Planned	Actual	Parameter	Planned	Actual
Instrument	HRC	HRC	Obspar format version number	7	7
Detector	HRC-S	HRC-S	Obspar file type	PREDICTED	ACTUAL
Grating	NONE	NONE	Obspar update status	NONE	UPDATED
Data mode	OBSERVING	OBSERVING			
Observation mode	POINTING	POINTING			
[deg] Pointing RA	276.115633	276.1332992327937			
[deg] Pointing Dec	-24.850627	-24.87431803226129			
[deg] Pointing Roll	271.168534	271.2432822229615			
[mm] SIM focus pos	-1.529586	-1.523540733526241			
[mm] SIM defocus	0.003750771043328743	0.009795905878055677			
[mm] SIM translation stage pos	250.455976	250.466033080201			
[mm] SIM translation stage offset	0	-0.01005468664627074			
[s] Observation start time (MET)	153122013.184000	153121315.71112			
Observation start date	2002-11-08T05:52:29	2002-11-08T05:41:55			
[s] Observation end time (MET)	153171413.184000	153172088.06324			
Observation end date	2002-11-08T19:35:49	2002-11-08T19:48:08			

## 2.3 Aspect

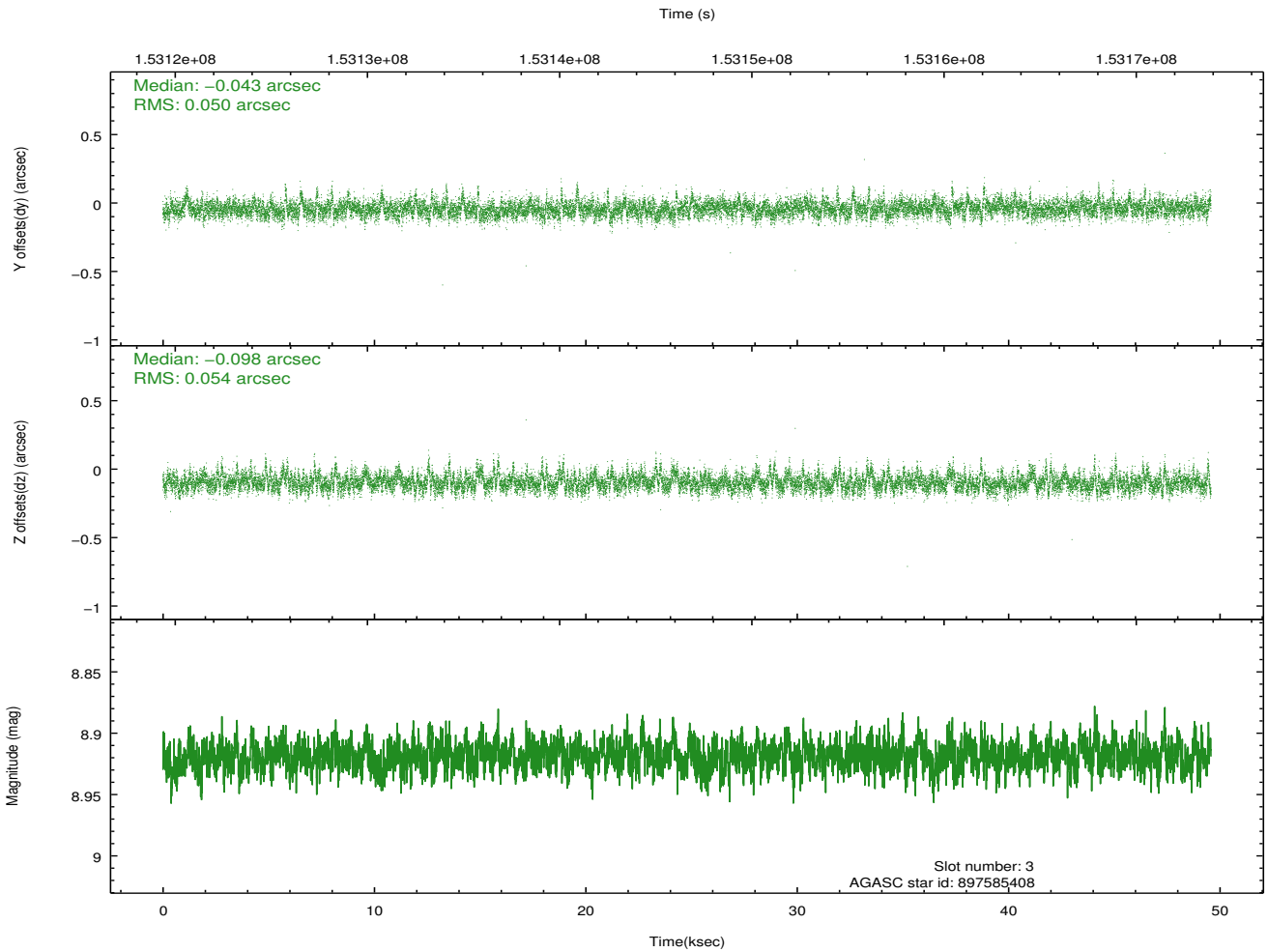
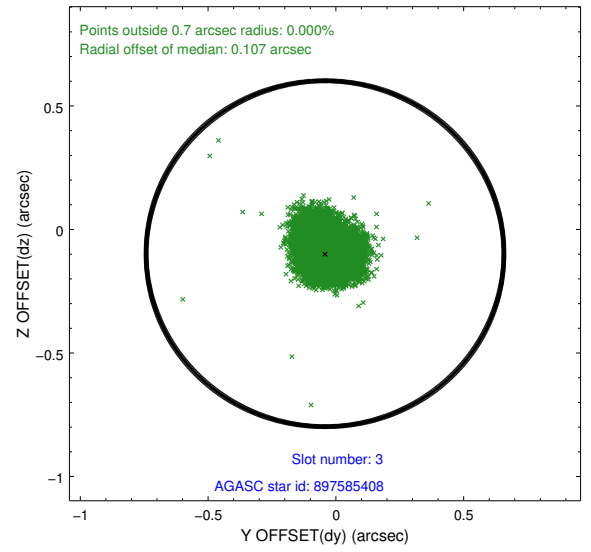
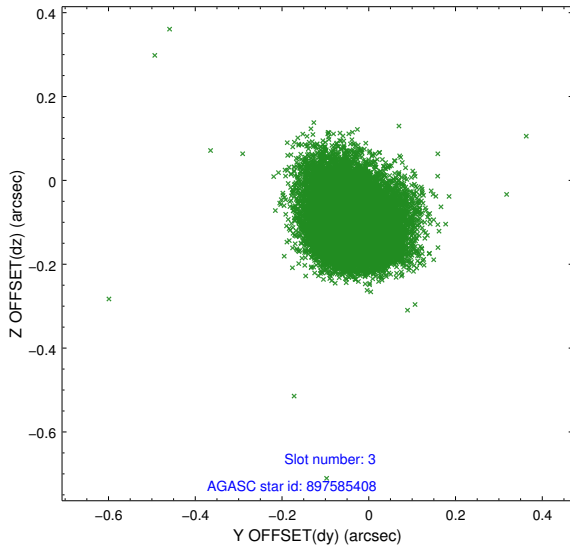


### Slot Statistics

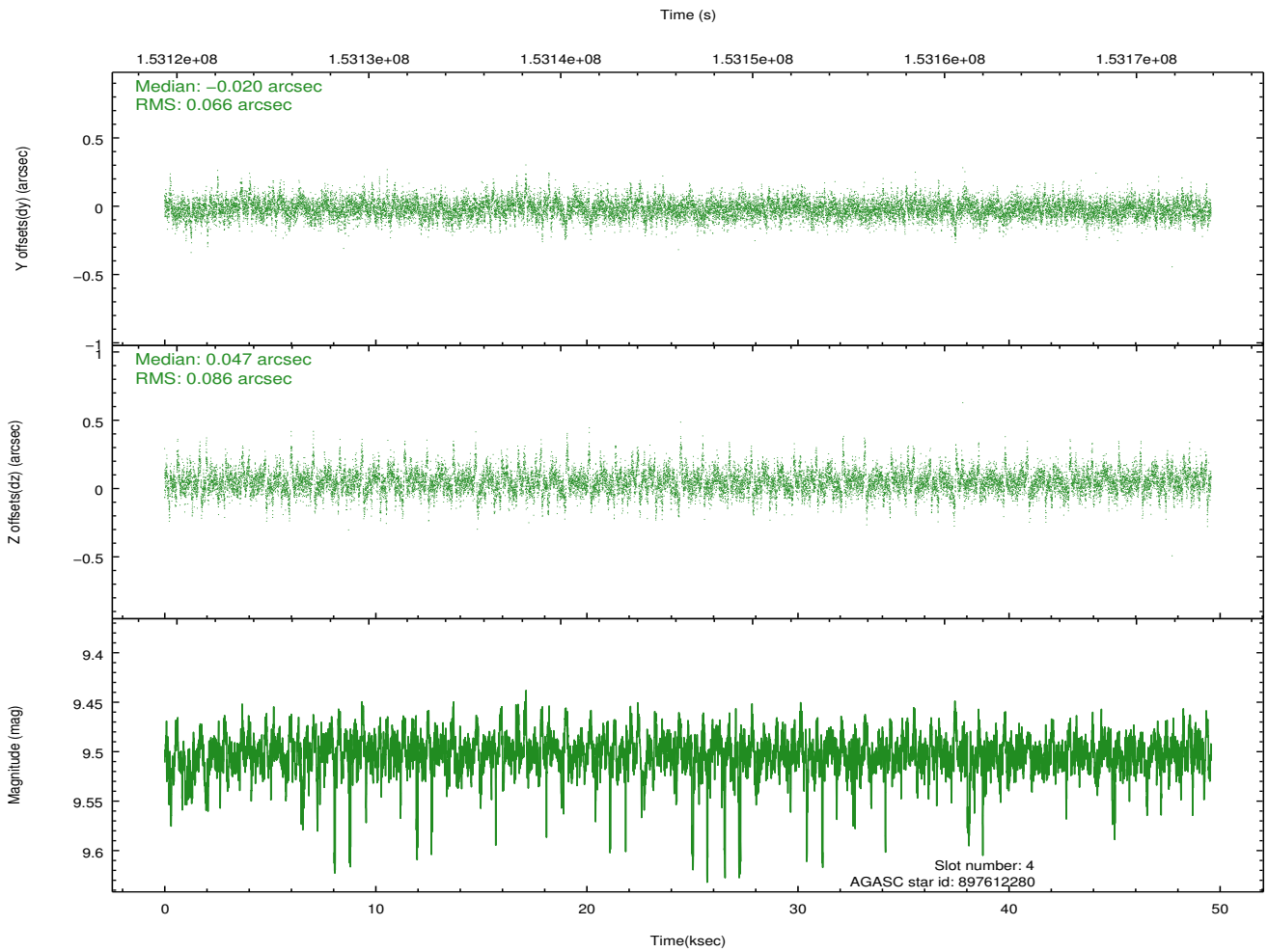
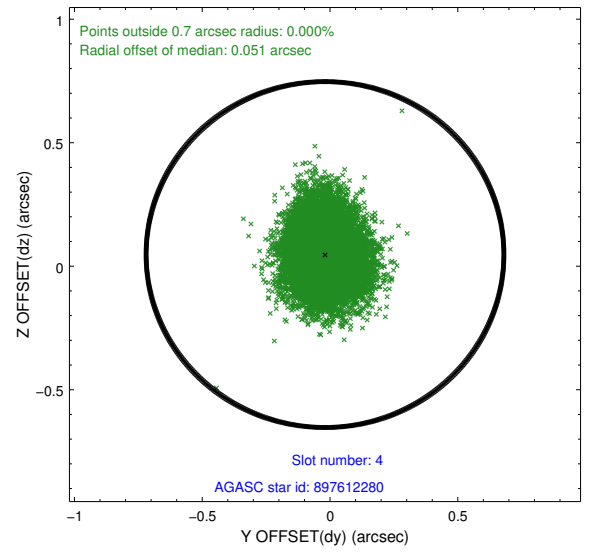
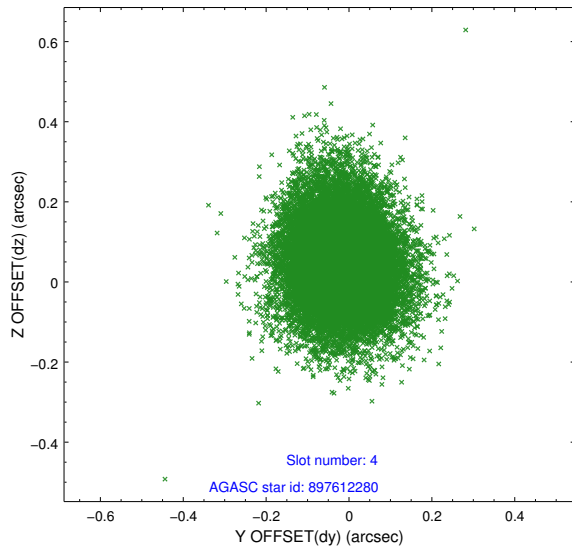
slot	status	id	mag	n_pts	med_dy	med_dz	dr1	dr2	ra	dec	mean_y	mean_z
0	FID	HRC-S-1	7.00	12093	0.153	-0.114	0.011	0.020	0.000000	0.000000	-1157.40	-456.76
1	FID	HRC-S-2	7.01	12093	0.080	-0.089	0.006	0.012	0.000000	0.000000	1242.09	-449.41
2	FID	HRC-S-3	7.02	12093	0.157	-0.099	0.011	0.020	0.000000	0.000000	-1160.01	572.74
3	GUIDE	897585408	8.92	24178	-0.043	-0.098	0.076	0.131	276.128475	-24.385394	-1674.08	76.38
4	GUIDE	897612280	9.50	24133	-0.020	0.047	0.111	0.198	275.649912	-25.401358	1953.58	-1554.16
5	GUIDE	897076488	9.44	24143	-0.026	0.097	0.110	0.189	275.884089	-24.287832	-2040.79	-718.23
6	GUIDE	897610120	8.51	24179	0.148	-0.132	0.092	0.154	275.375820	-25.427247	2032.87	-2447.01
7	GUIDE	897581536	8.77	24176	-0.059	0.084	0.079	0.128	276.270189	-24.414428	-1559.88	538.73

## 2.4 Star Slots

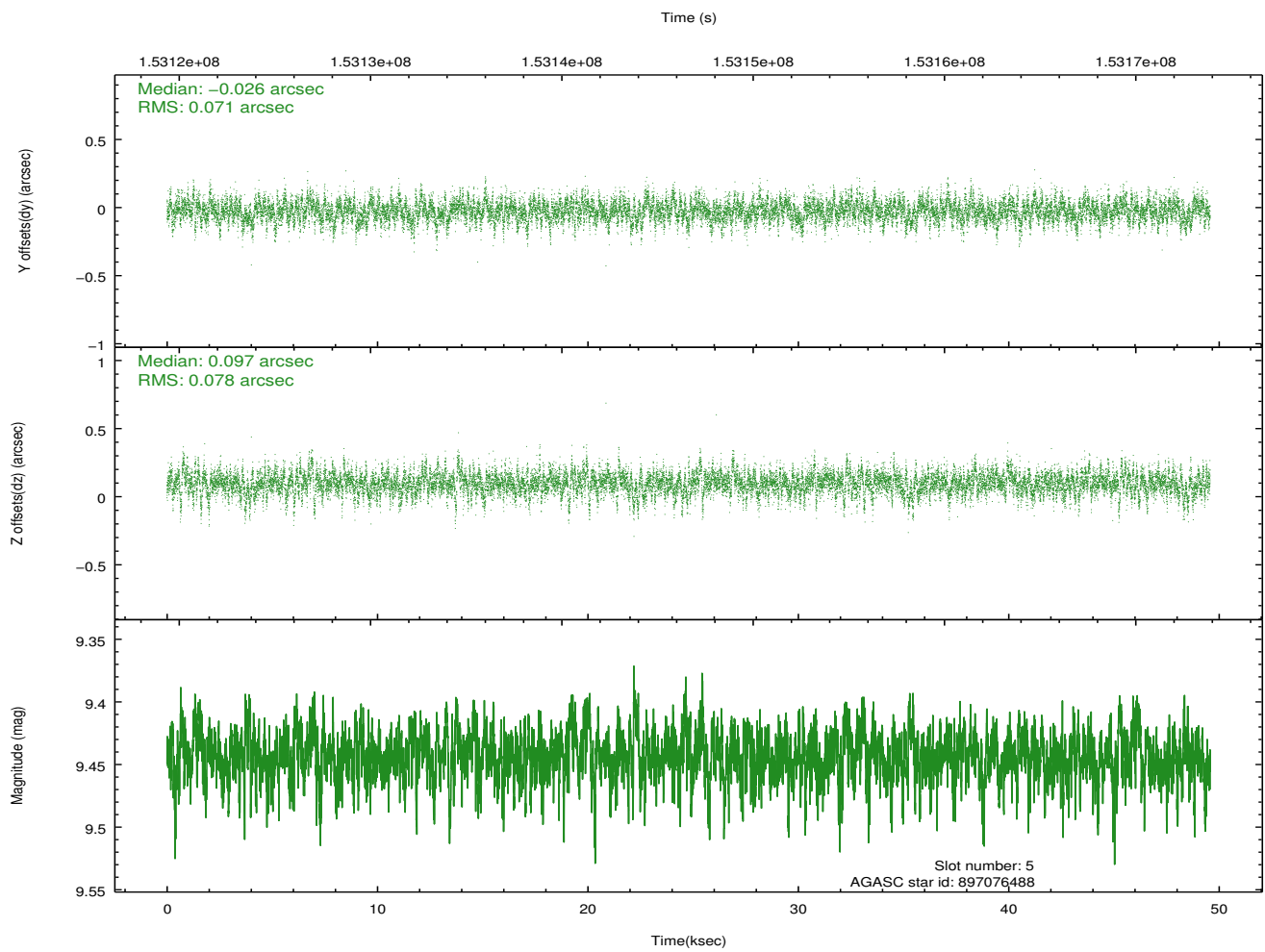
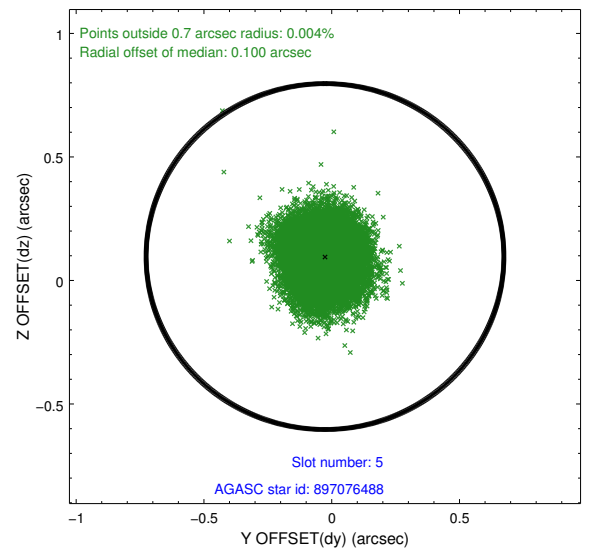
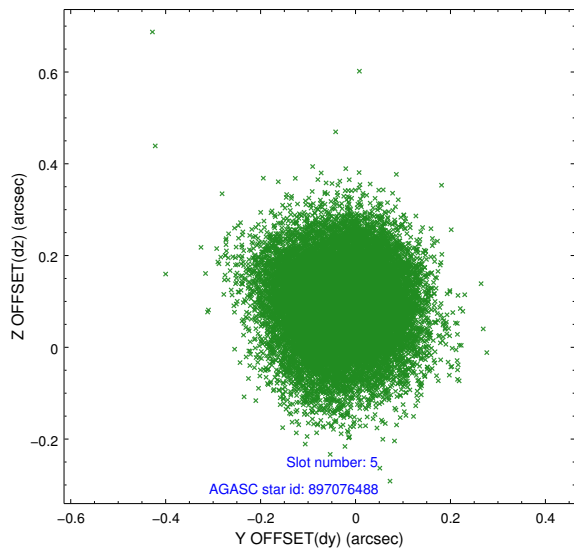
### 2.4.1 Slot 3



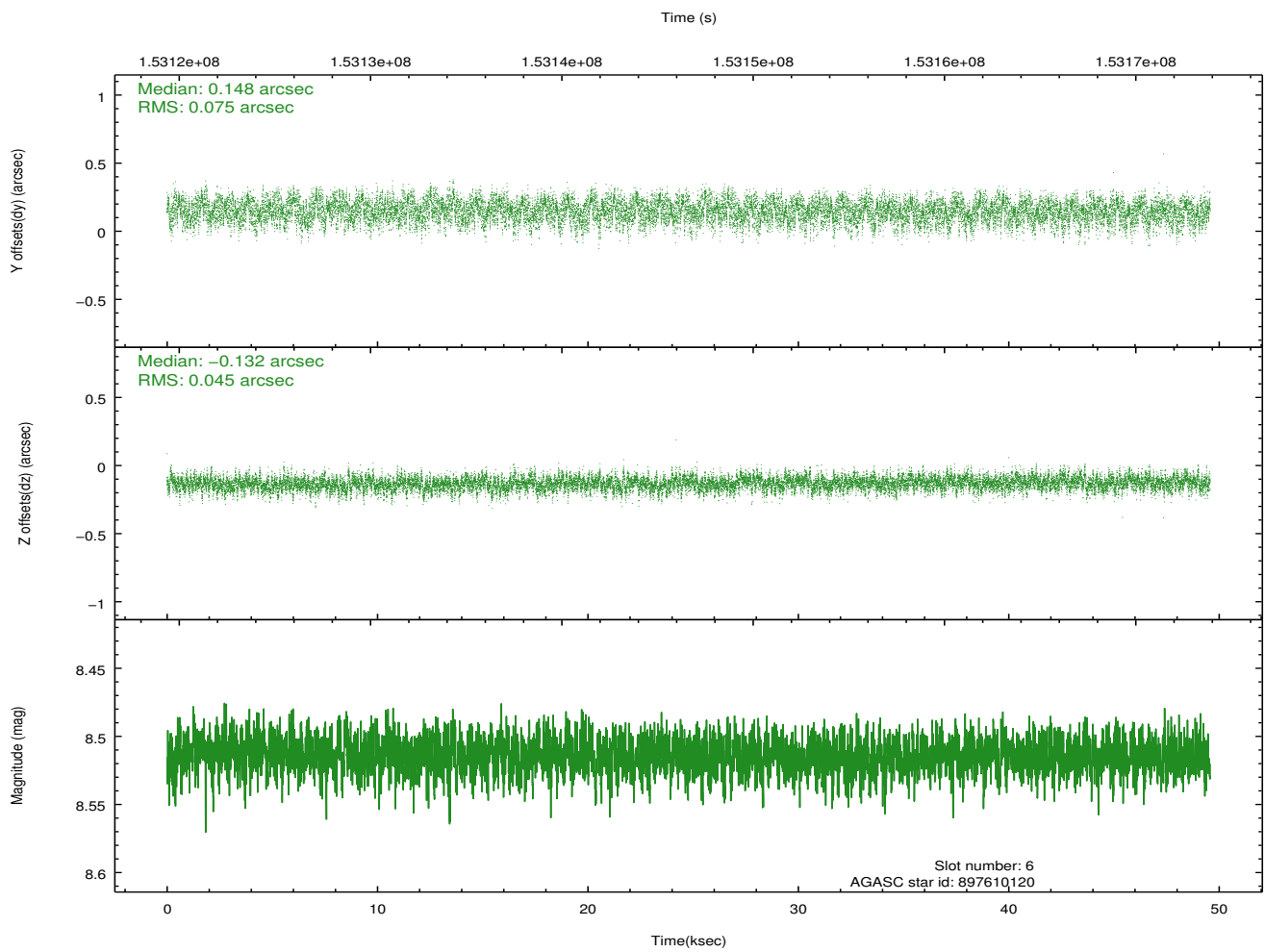
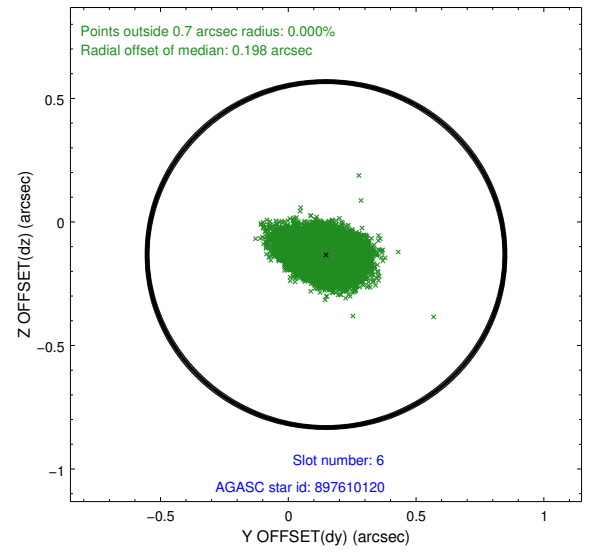
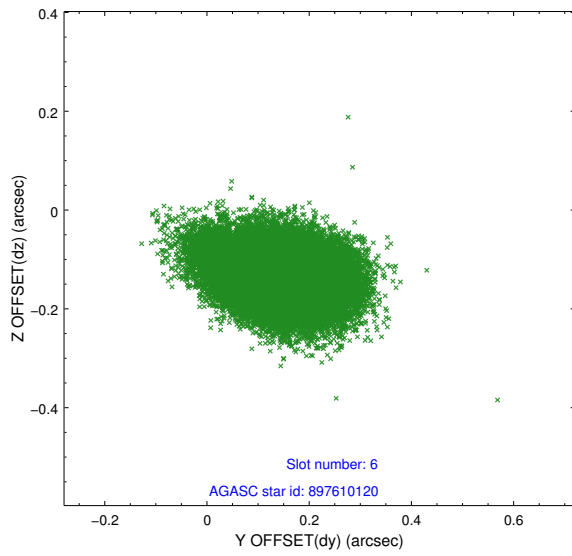
## 2.4.2 Slot 4



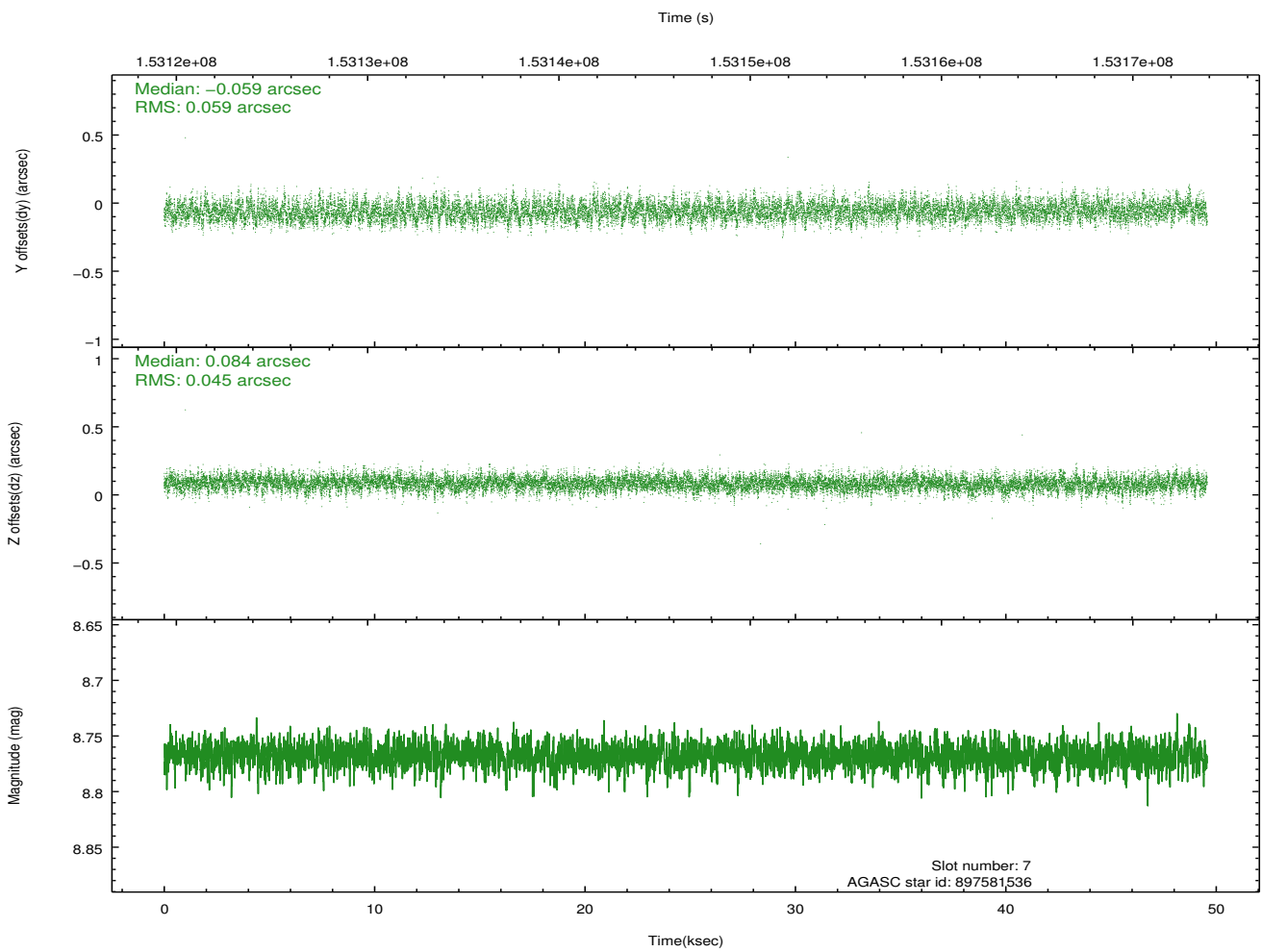
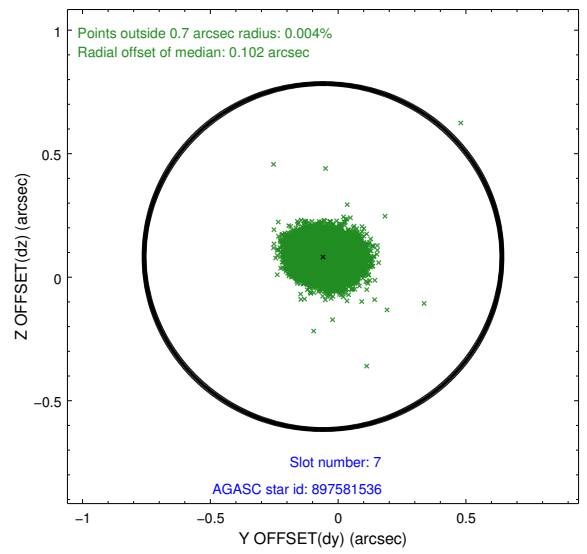
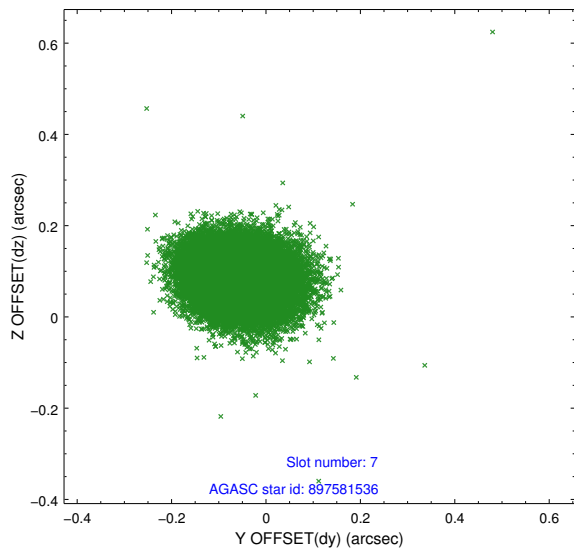
### 2.4.3 Slot 5



## 2.4.4 Slot 6

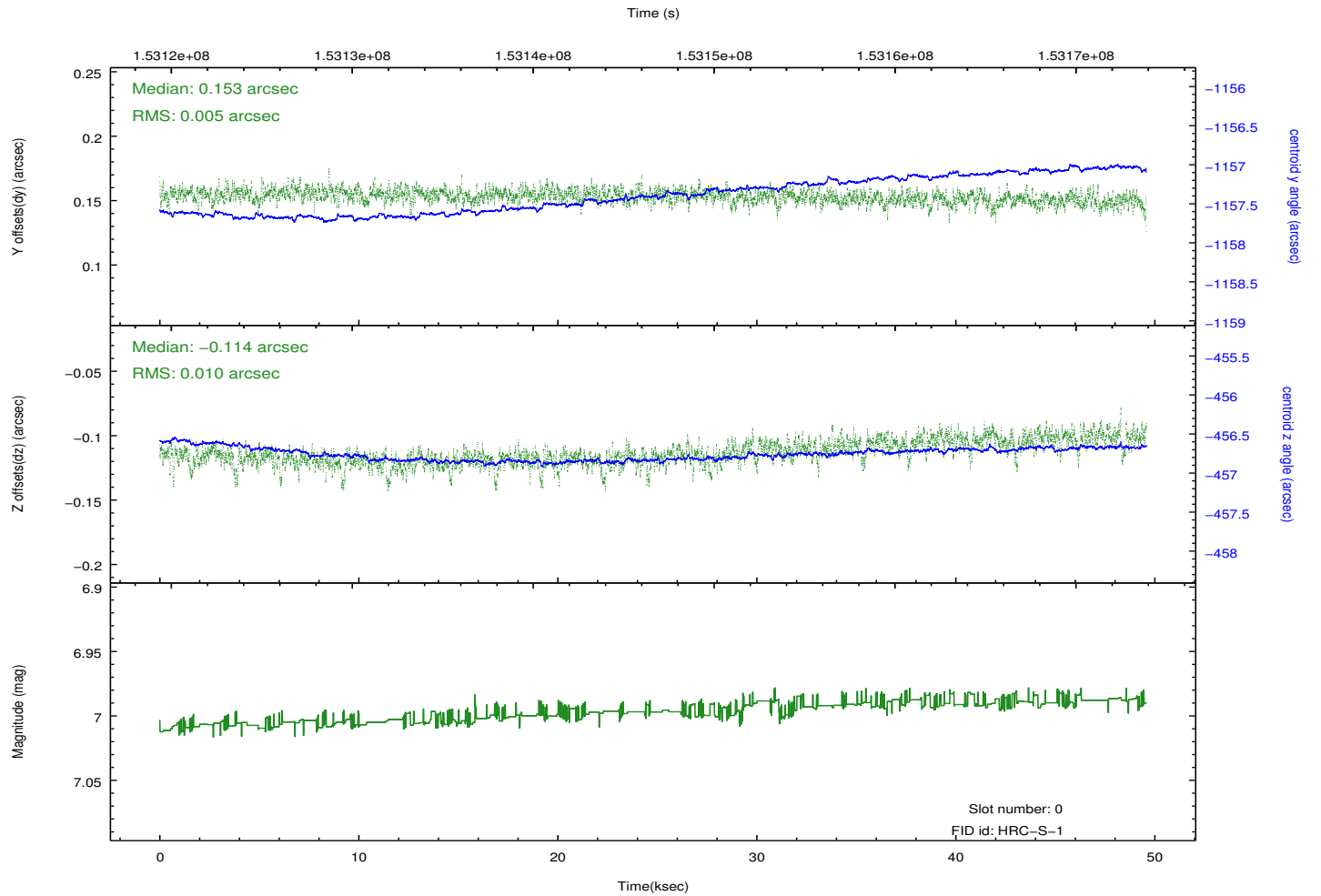
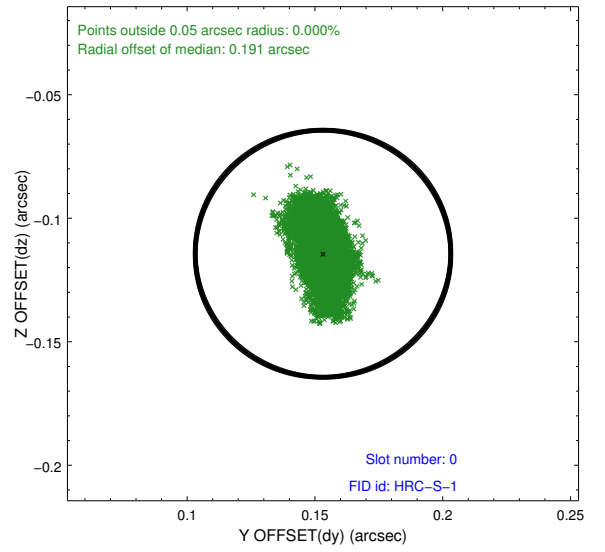
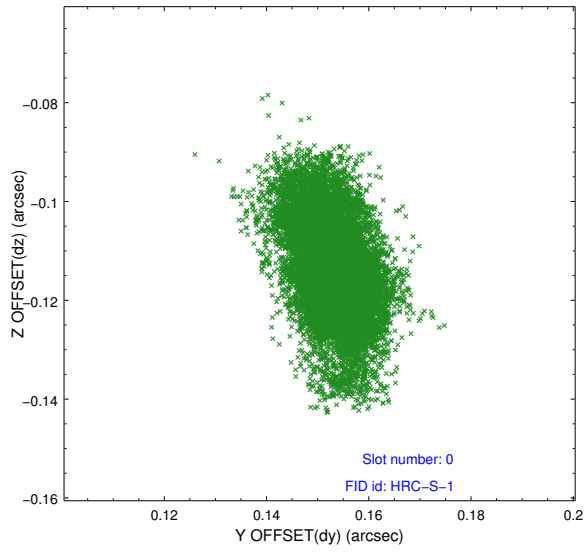


## 2.4.5 Slot 7

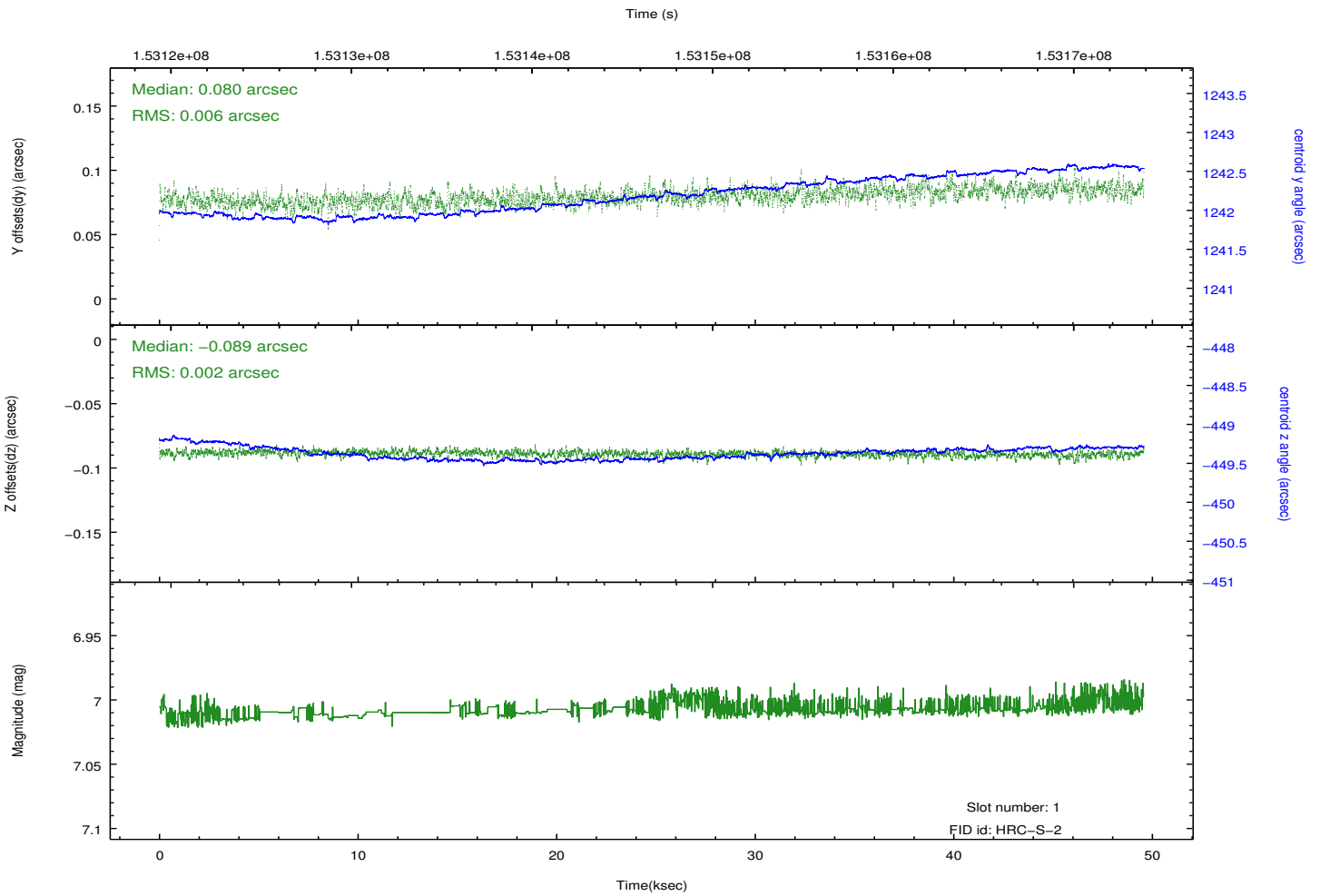
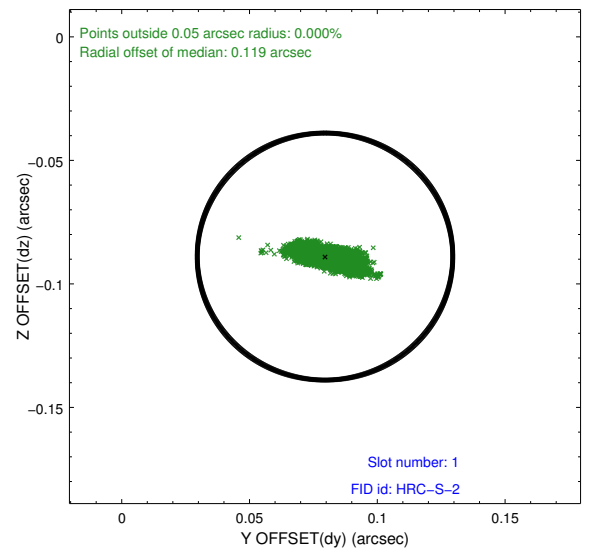
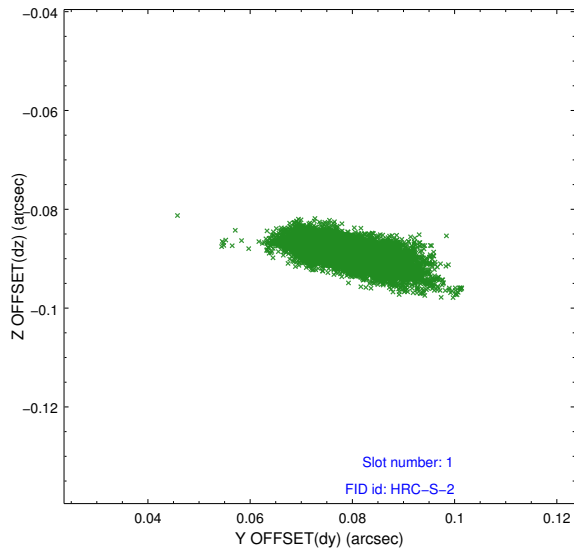


## 2.5 FID Slots

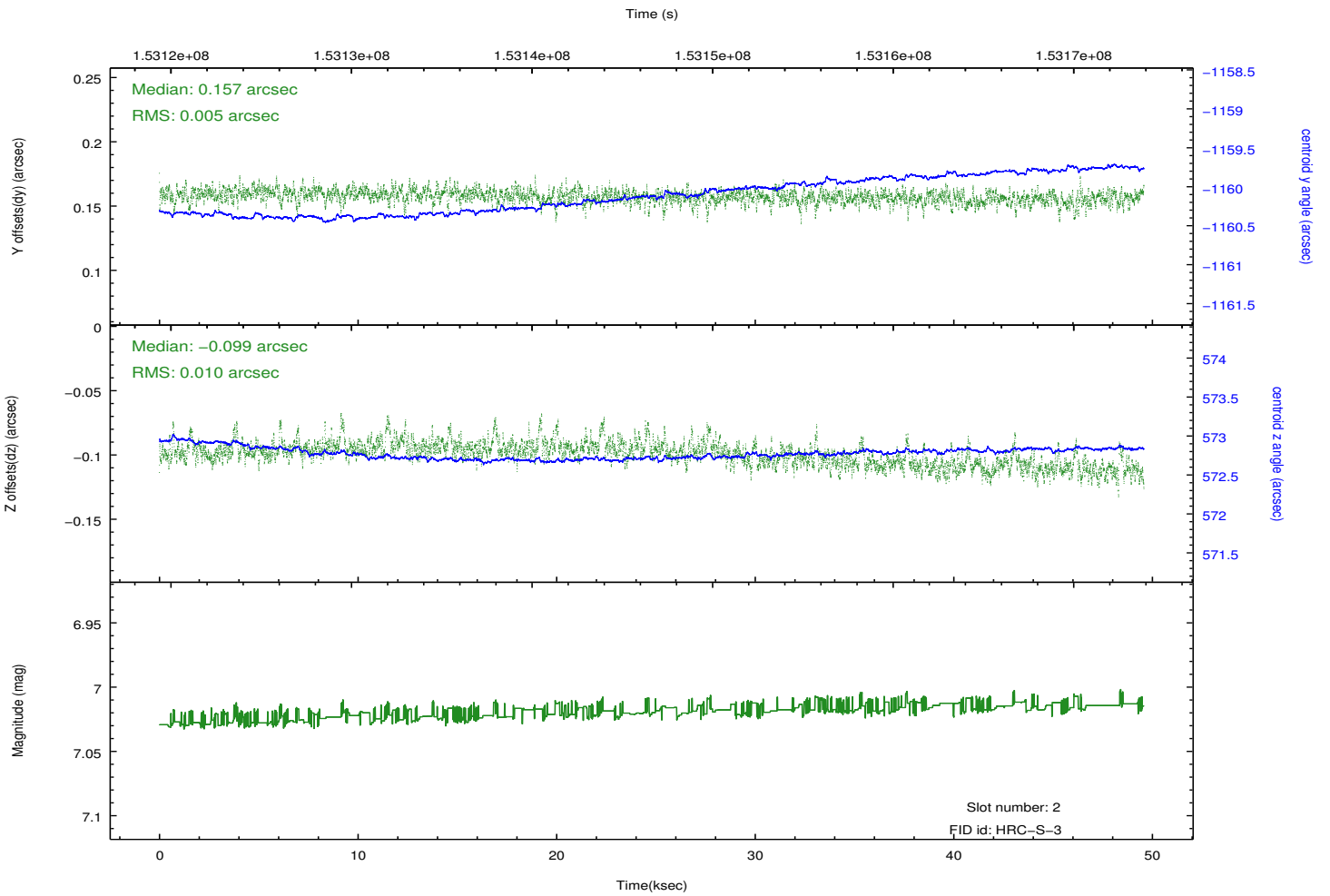
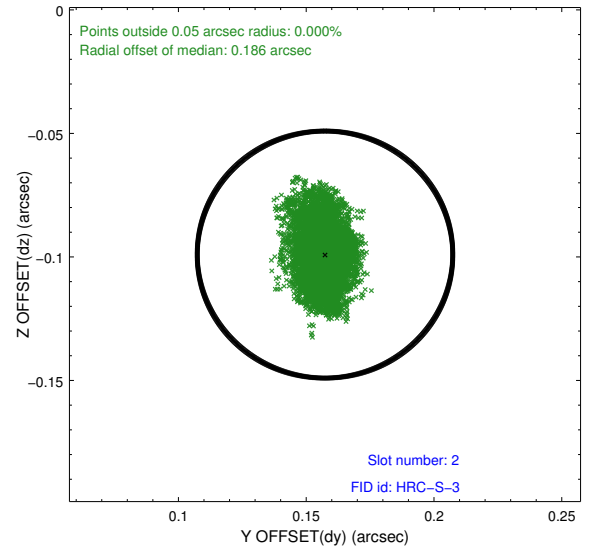
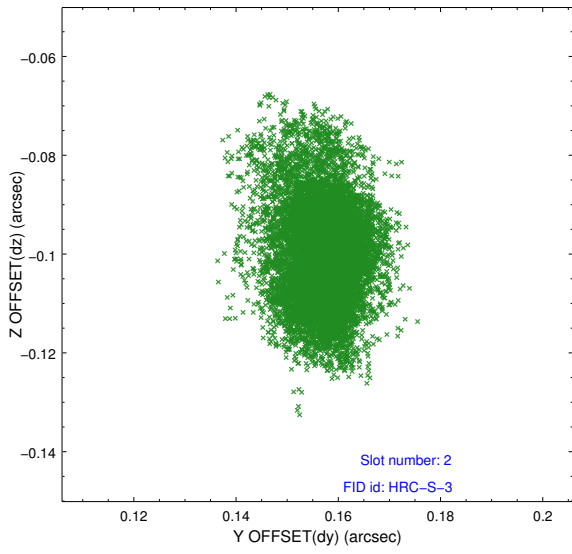
### 2.5.1 Slot 0



## 2.5.2 Slot 1



### 2.5.3 Slot 2



# A Summary

## A.1 Status

V&V Scientist	Beth Sundheim
V&V Date (YYYY-MM-DD)	2013.07.01
V&V Edition	1
V&V Disposition and Status	OK
V&V Charge Time	49.374

## A.2 Comments