

V&V Reference Report

L2 ASCDS Version : 8.4.5

Observation 4177 - L2 Version 3
Chandra X-Ray Center

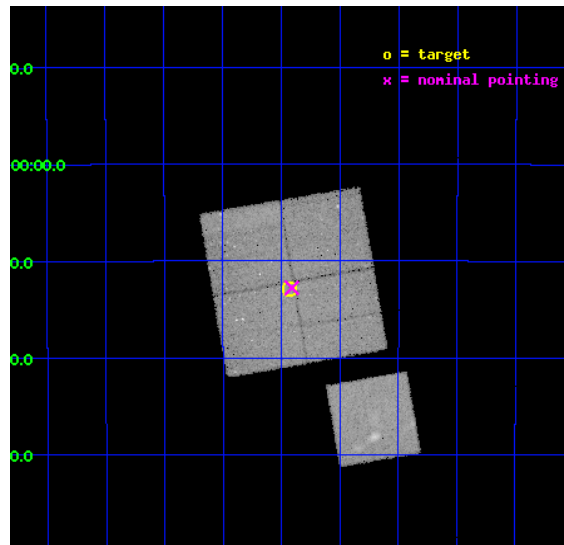
L2 Processing Date : Oct 29 2012

Contents

1	Front	2
2	OBI	3
2.1	OBI	3
2.1.1	Images	3
2.1.2	Bias	3
2.1.3	Parameters	4
2.1.4	Events	4
2.2	Compared Parameters	5
2.3	Aspect	6
2.4	Star Slots	9
2.4.1	Slot 3	9
2.4.2	Slot 4	10
2.4.3	Slot 5	11
2.4.4	Slot 6	12
2.4.5	Slot 7	13
2.5	FID Slots	14
2.5.1	Slot 0	14
2.5.2	Slot 1	15
2.5.3	Slot 2	16
A	Summary	17
A.1	Status	17
A.2	Comments	17

1 Front

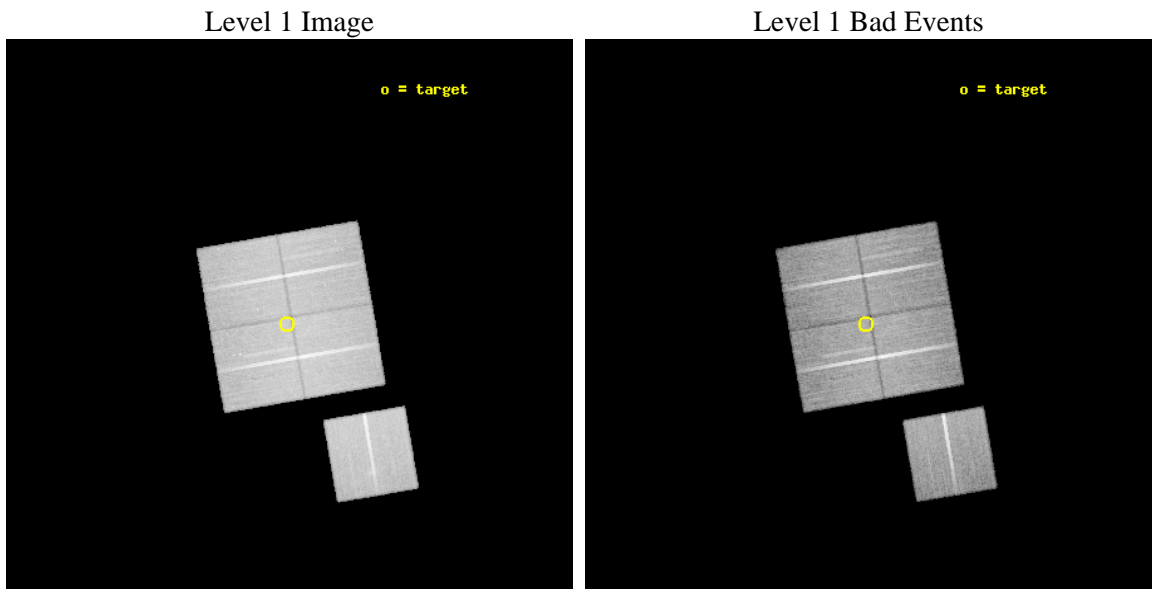
seq_num	800333	Sequence number
obs_id	4177	Observation id
title	SURVEYING THE FORNAX CLUSTER OF GALAXIES	Proposal title
observer	Dr Caleb Scharf	Principal investigator
object	FORNAX CLUSTER	Source name
dtcycle	0	
cycle	P	events from which exps? Prim/Second/Both
ra_targ	54.9825	Observer's specified target RA [deg]
dec_targ	-35.2156	Observer's specified target Dec [deg]
ra_nom	54.977741023351	Nominal RA [deg]
dec_nom	-35.213096744246	Nominal Dec [deg]
roll_nom	170.20593946498	Nominal Roll [deg]
revision	3	Processing version of data
ontime	47575.5771074	Sum of GTIs [s]
livetime	46953.967167861	Livetime [s]
ontime0	47578.717948109	Sum of GTIs [s]
ontime1	47572.43603763	Sum of GTIs [s]
ontime2	47584.999908477	Sum of GTIs [s]
ontime3	47575.5771074	Sum of GTIs [s]
ontime6	47578.717967987	Sum of GTIs [s]
l2events	161848	Number of level 2 events



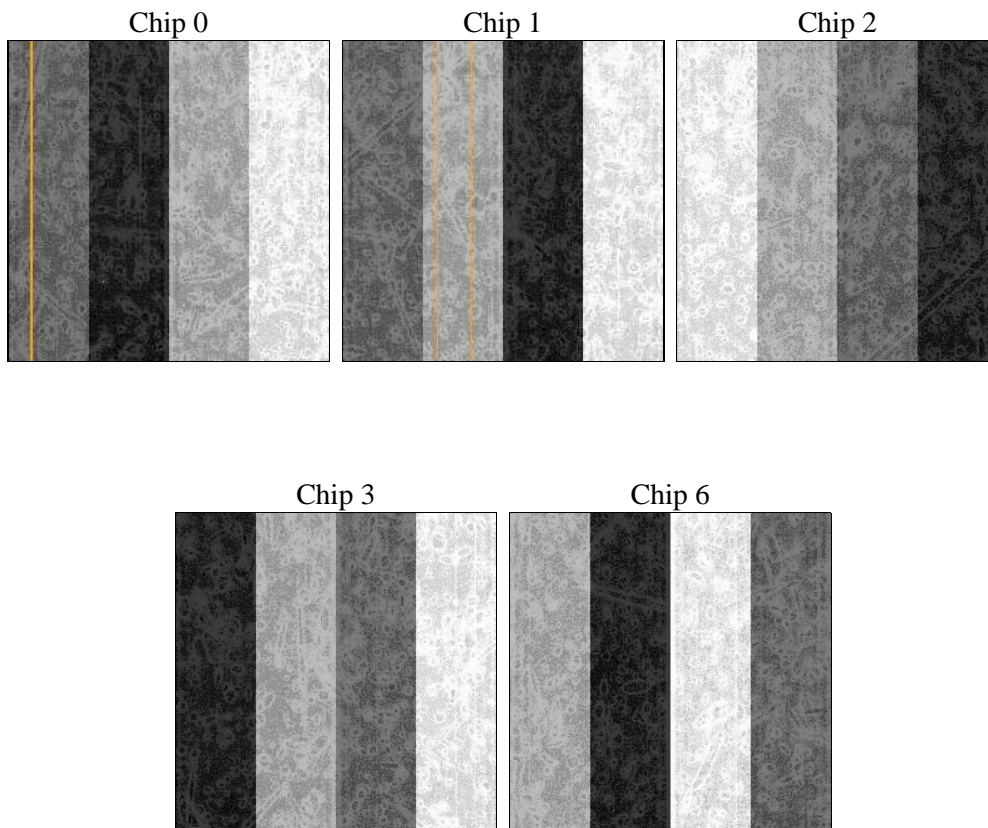
2 OBI

2.1 OBI

2.1.1 Images



2.1.2 Bias



2.1.3 Parameters

obi_num	1	Obi number	sched_exp_time	47816.618000	[s] Scheduled observation exposure time
ascdsver	8.4.5	Processing system revision	ontime	47575.5771074	Sum of GTIs [s]
caldbver	4.5.2	 	ontime0	47578.717948109	Sum of GTIs [s]
date	2012-10-29T05:45:00	Date and time of file creation	ontime1	47572.43603763	Sum of GTIs [s]
revision	3	Processing version of data	ontime2	47584.999908477	Sum of GTIs [s]
			ontime3	47575.5771074	Sum of GTIs [s]
			ontime6	47578.717967987	Sum of GTIs [s]
			l1events	1202324	Number of level 1 events

2.1.4 Events

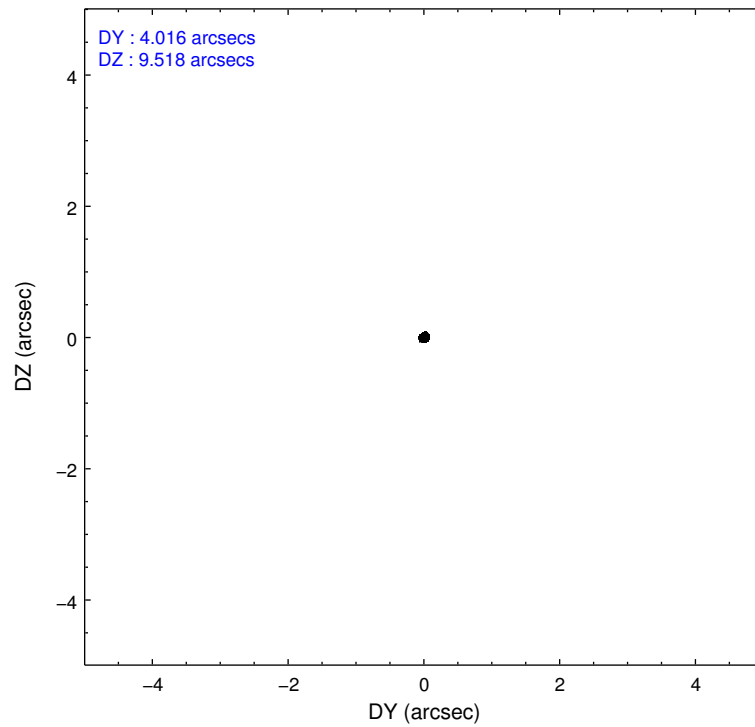
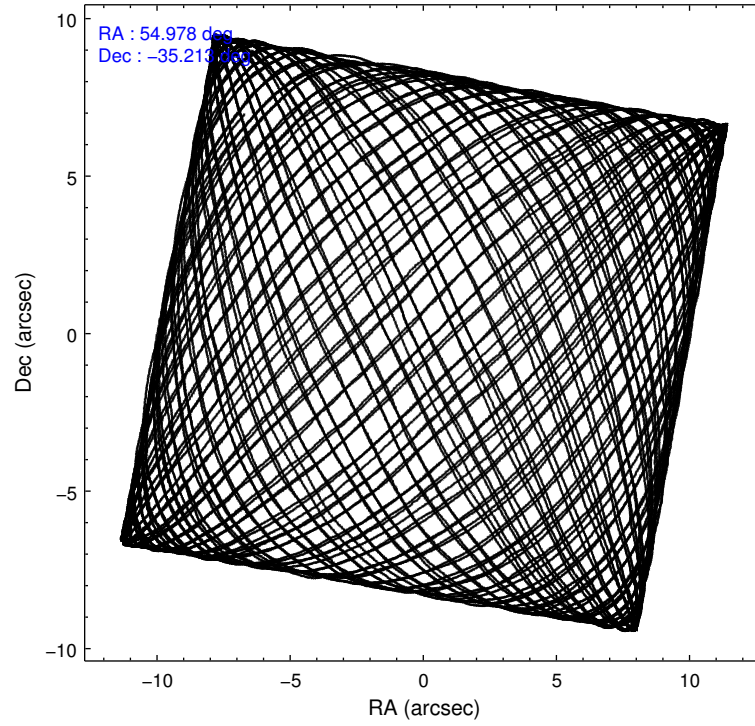
	ccd 0	ccd 1	ccd 2	ccd 3	ccd 6
level 1 events	229297	226783	255722	244184	246338
rejected events	194471	190654	217651	210165	201950
rejected %	84%	84%	85%	86%	81%

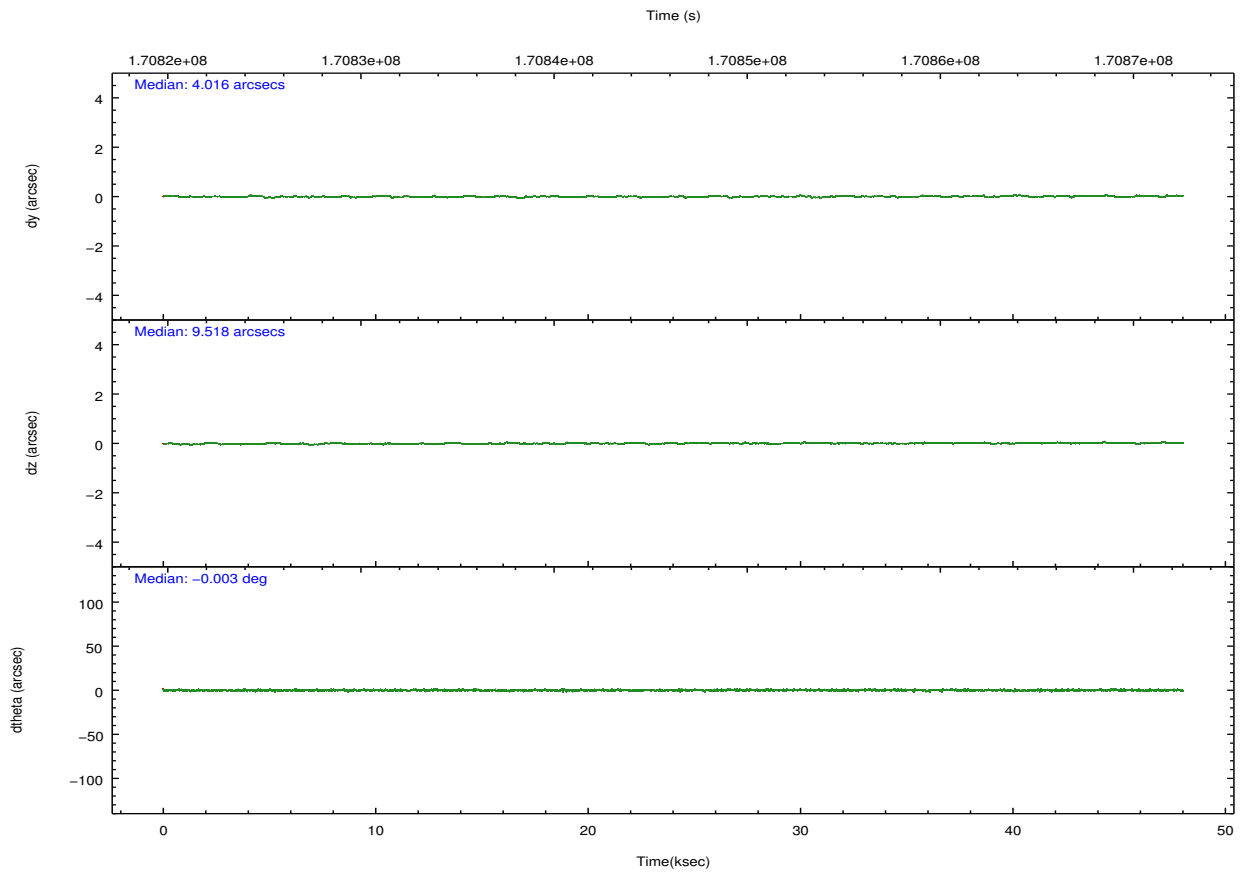
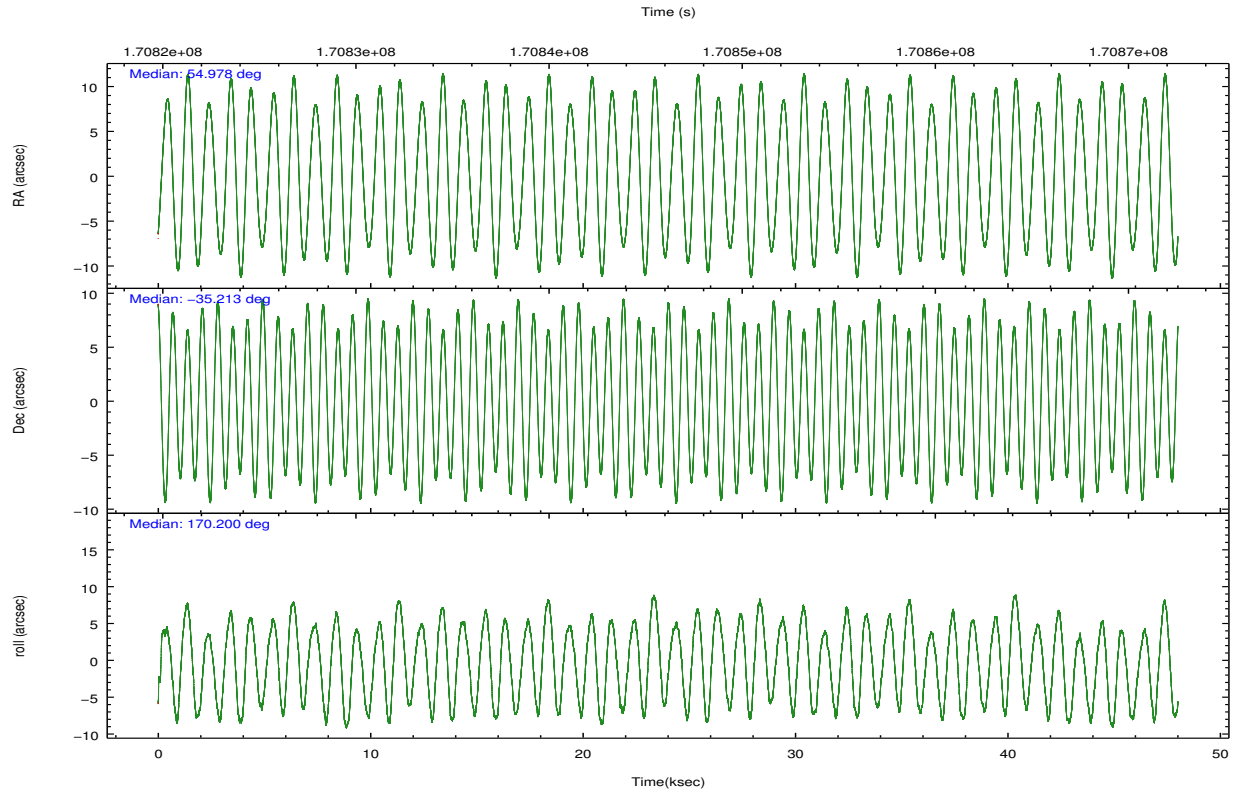
	ccd 0	ccd 1	ccd 2	ccd 3	ccd 6
grade 0 events	18071	18297	21286	18302	25654
	7%	8%	8%	7%	10%
grade 1 events	137	125	156	143	152
	0%	0%	0%	0%	0%
grade 2 events	6535	6378	6501	5702	6883
	2%	2%	2%	2%	2%
grade 3 events	2970	3135	2870	2740	3172
	1%	1%	1%	1%	1%
grade 4 events	2708	3130	2971	2748	3156
	1%	1%	1%	1%	1%
grade 5 events	7758	8346	7474	8837	8676
	3%	3%	2%	3%	3%
grade 6 events	4549	5193	4451	4535	5529
	1%	2%	1%	1%	2%
grade 7 events	186569	182179	210013	201177	193116
	81%	80%	82%	82%	78%

2.2 Compared Parameters

Parameter	Planned	Actual	Parameter	Planned	Actual
Instrument	ACIS	ACIS	Obspar format version number	7	7
Detector	ACIS-01236	ACIS-01236	Obspar file type	PREDICTED	ACTUAL
Grating	NONE	NONE	Obspar update status	NONE	UPDATED
Data mode	VFAINT	VFAINT	Number of optional ACIS chips dropped	0	0
Observation mode	POINTING	POINTING	On-chip summing requested	N	N
[deg] Pointing RA	55.009129	54.97774102335119	Subarray requested	NONE	NONE
[deg] Pointing Dec	-35.203518	-35.21309674424555	Alternating exposures requested	N	N
[deg] Pointing Roll	170.015353	170.2059394649773	[s] Primary exposure time	0.000000	3.1
[mm] SIM focus pos	-0.782348	-0.7809083437167272			
[mm] SIM defocus	0	0.001439871863259334			
[mm] SIM translation stage pos	-233.592463	-233.5874344608287			
[mm] SIM translation stage offset	0	-0.005018542100998502			
[s] Observation start time (MET)	170822344.184000	170821967.65466			
Observation start date	2003-06-01T02:38:00	2003-06-01T02:32:47			
[s] Observation end time (MET)	170870160.184000	170870474.75671			
Observation end date	2003-06-01T15:54:56	2003-06-01T16:01:14			
Read mode	TIMED	TIMED			

2.3 Aspect



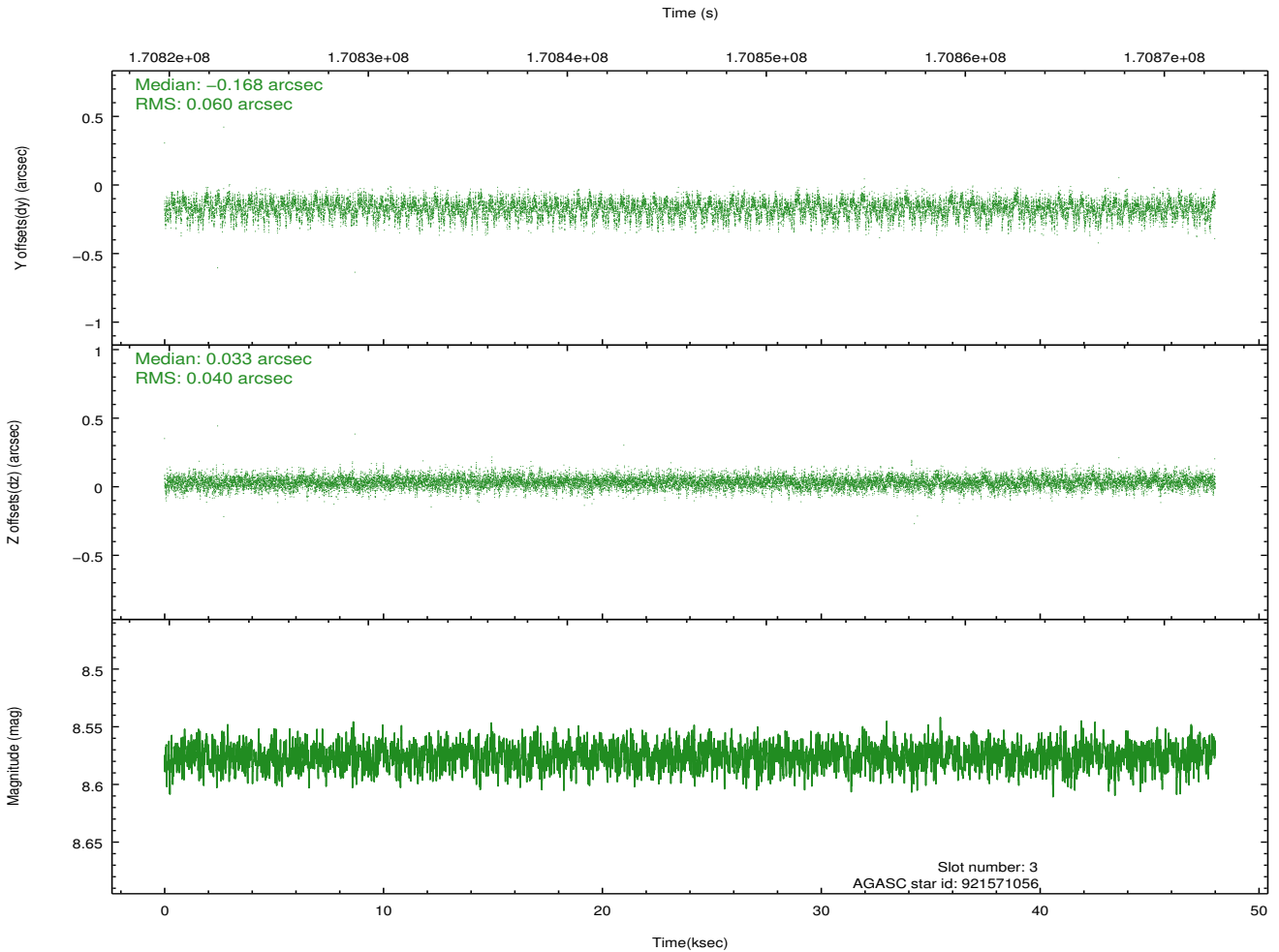
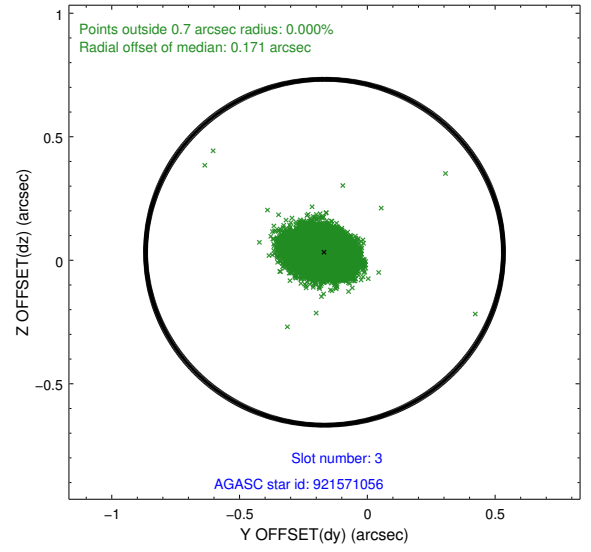
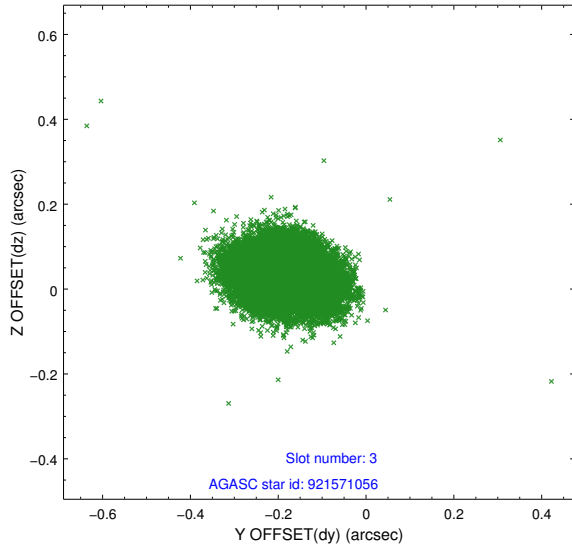


Slot Statistics

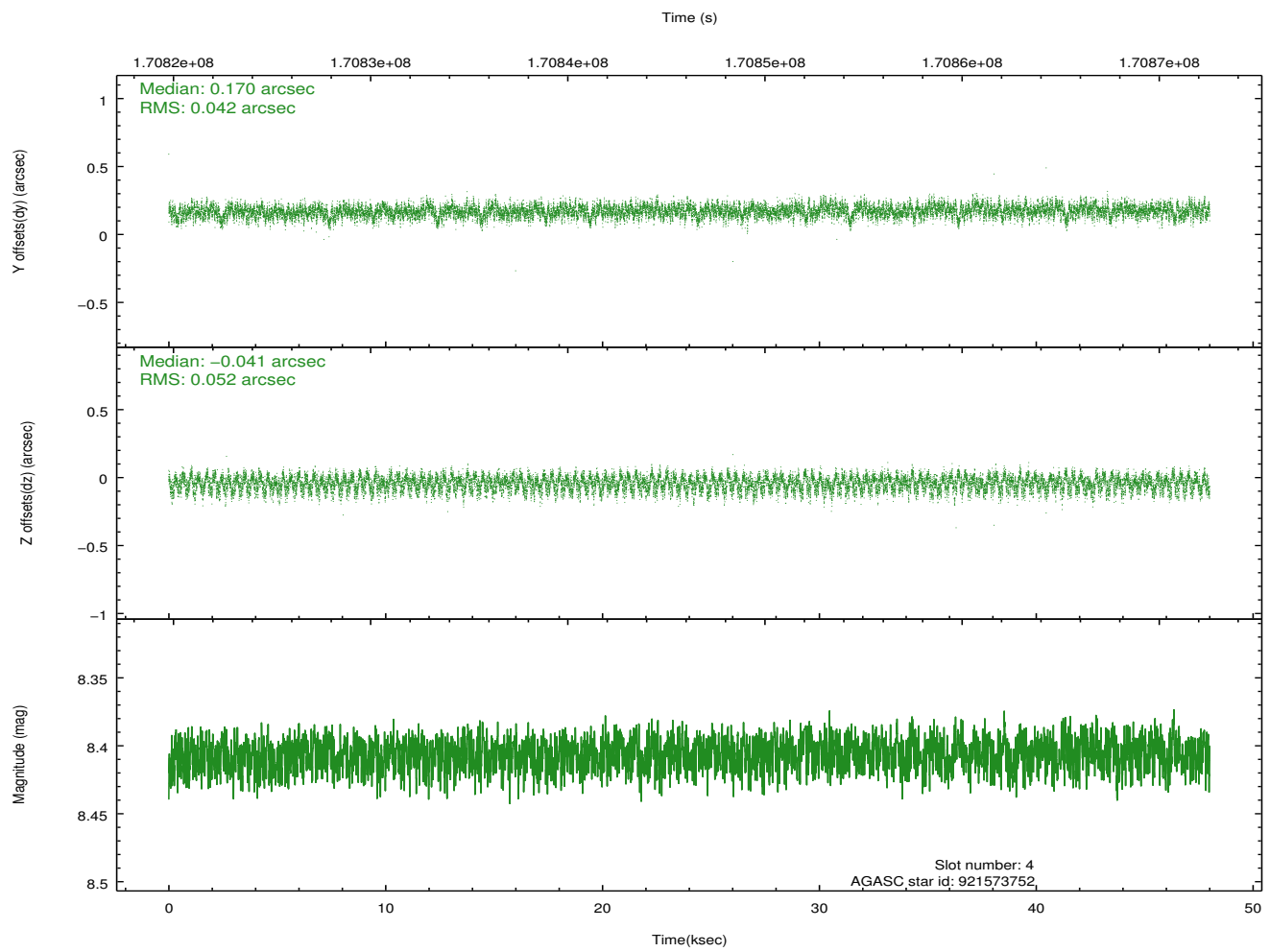
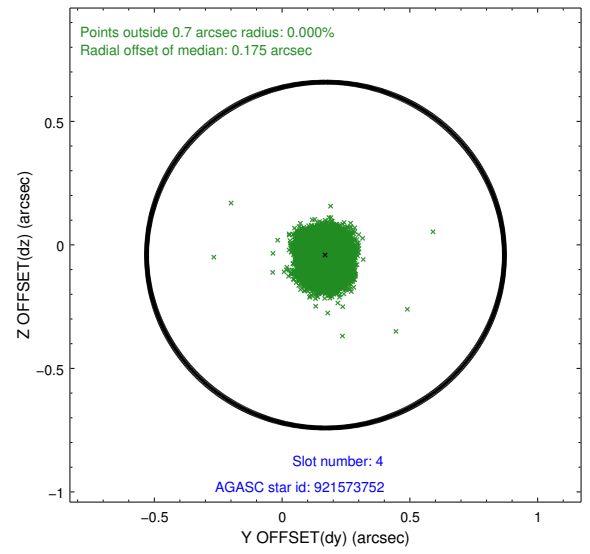
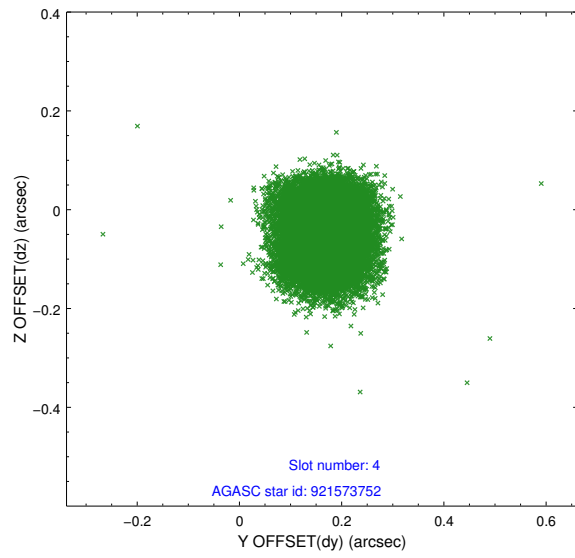
slot	status	id	mag	n_pts	med_dy	med_dz	dr1	dr2	ra	dec	mean_y	mean_z
0	FID	ACIS-I-1	7.24	11709	-0.018	0.032	0.009	0.015	0.000000	0.000000	935.74	-832.93
1	FID	ACIS-I-4	7.17	11710	0.064	0.010	0.008	0.013	0.000000	0.000000	2155.84	1066.87
2	FID	ACIS-I-5	7.23	11710	-0.145	0.029	0.007	0.012	0.000000	0.000000	-1812.42	1064.68
3	GUIDE	921571056	8.58	23406	-0.168	0.033	0.076	0.127	54.339011	-34.649674	2299.39	-1612.61
4	GUIDE	921573752	8.41	23417	0.170	-0.041	0.071	0.113	55.297577	-34.906150	-652.64	-1200.78
5	GUIDE	921575528	7.97	23416	0.007	0.170	0.062	0.100	55.012292	-34.549755	399.27	-2318.81
6	GUIDE	921966544	7.91	23409	-0.025	-0.120	0.068	0.103	54.743508	-35.636012	495.47	1669.31
7	GUIDE	921970112	9.57	23368	0.021	-0.036	0.108	0.170	54.291262	-35.695592	1758.70	2116.48

2.4 Star Slots

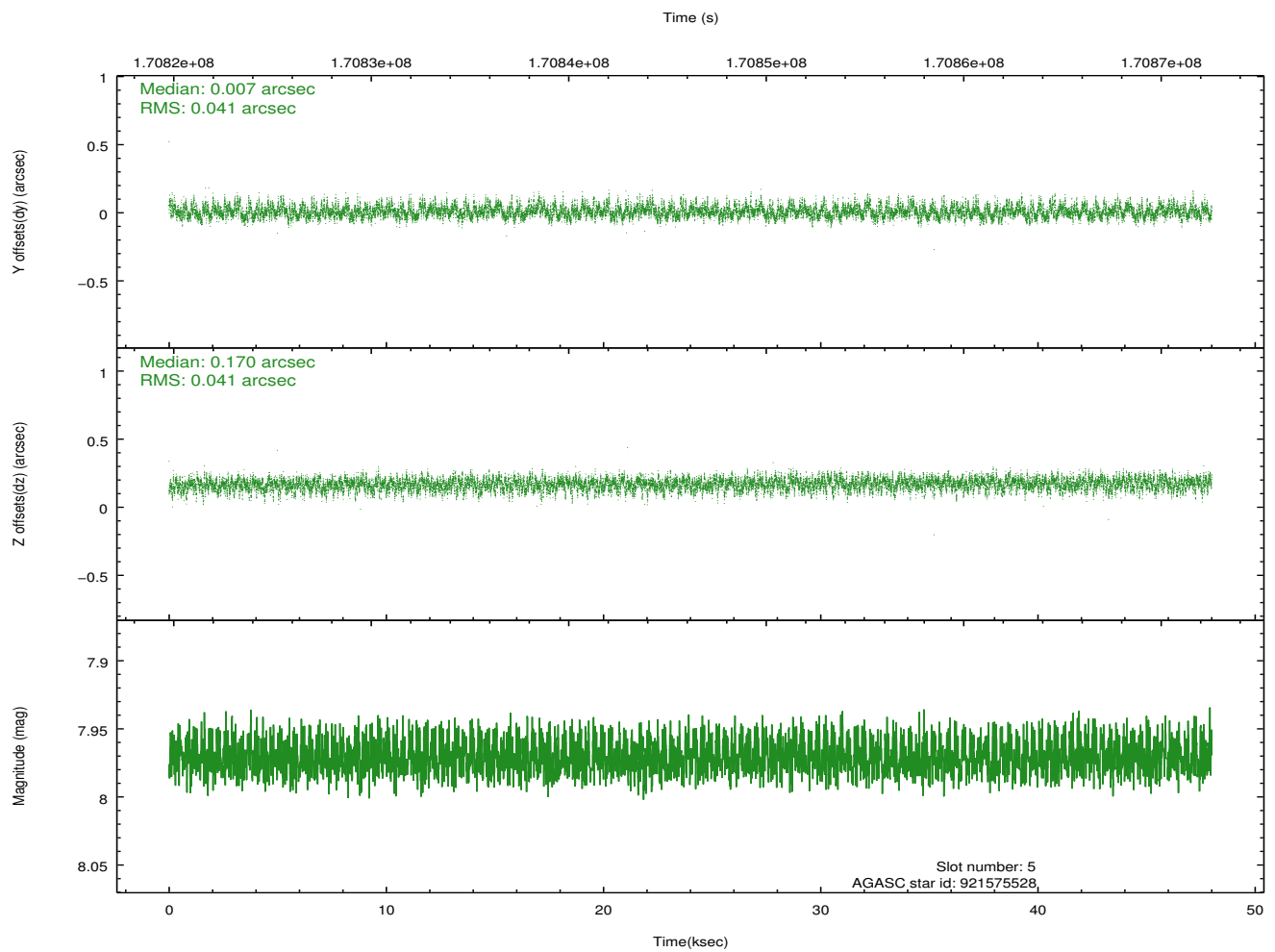
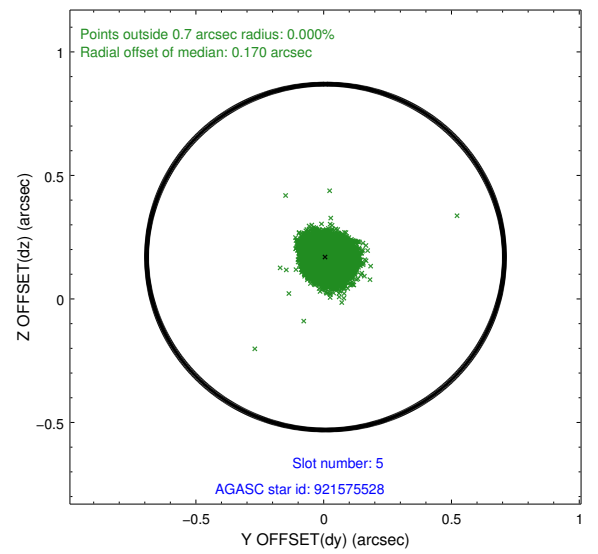
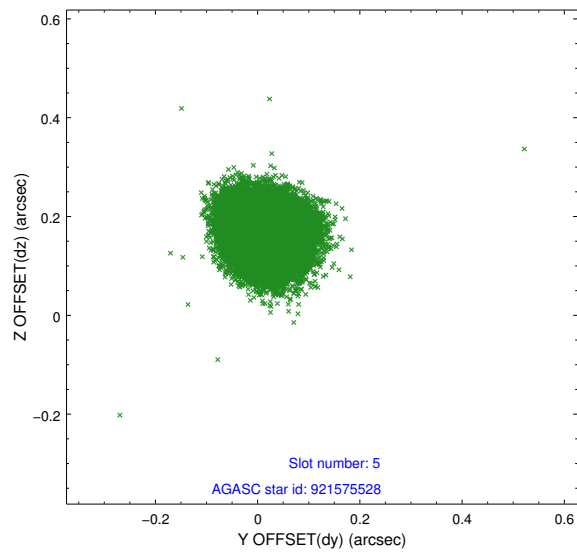
2.4.1 Slot 3



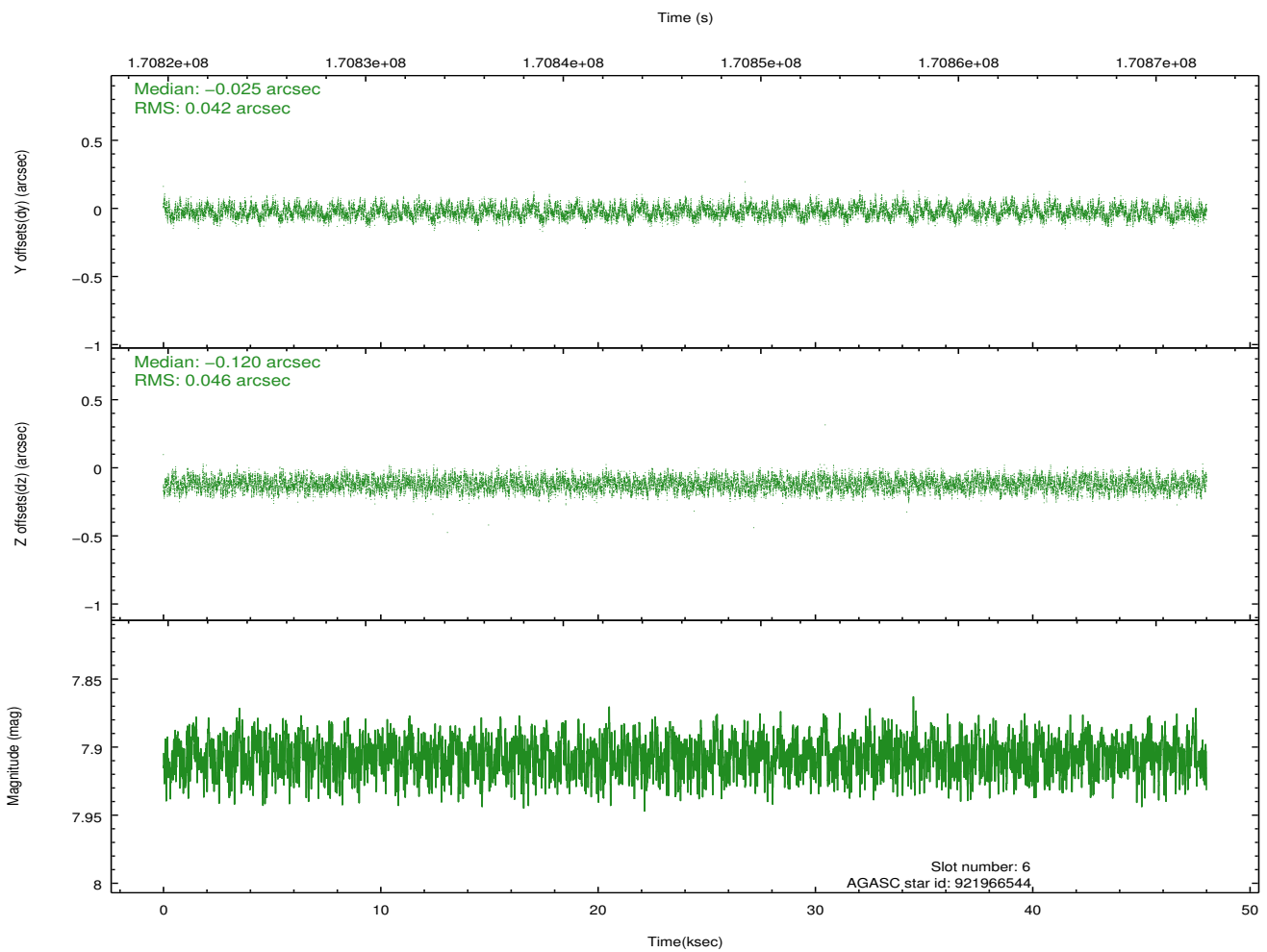
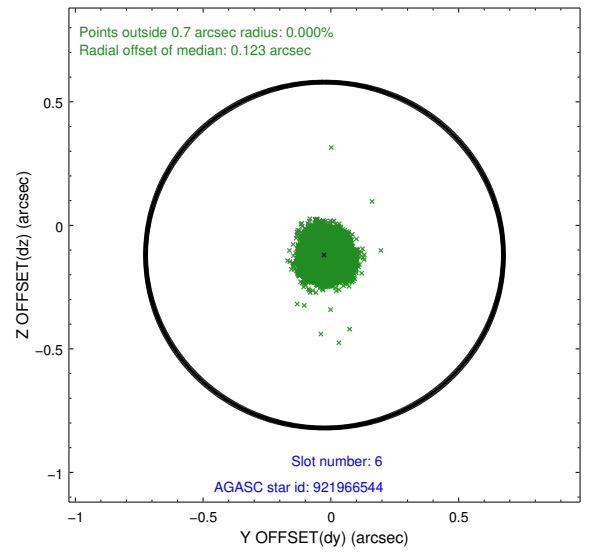
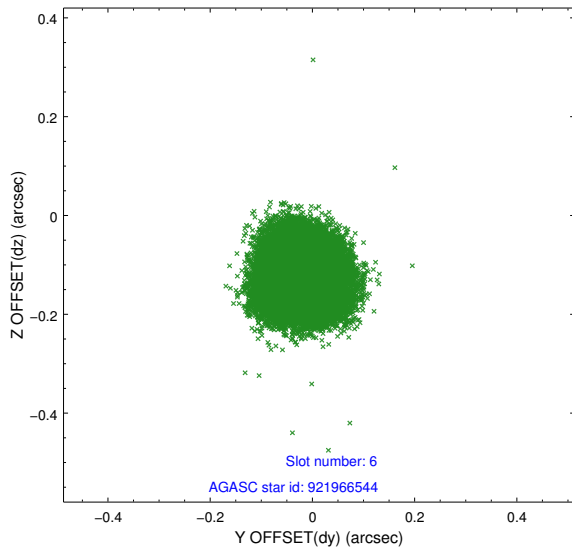
2.4.2 Slot 4



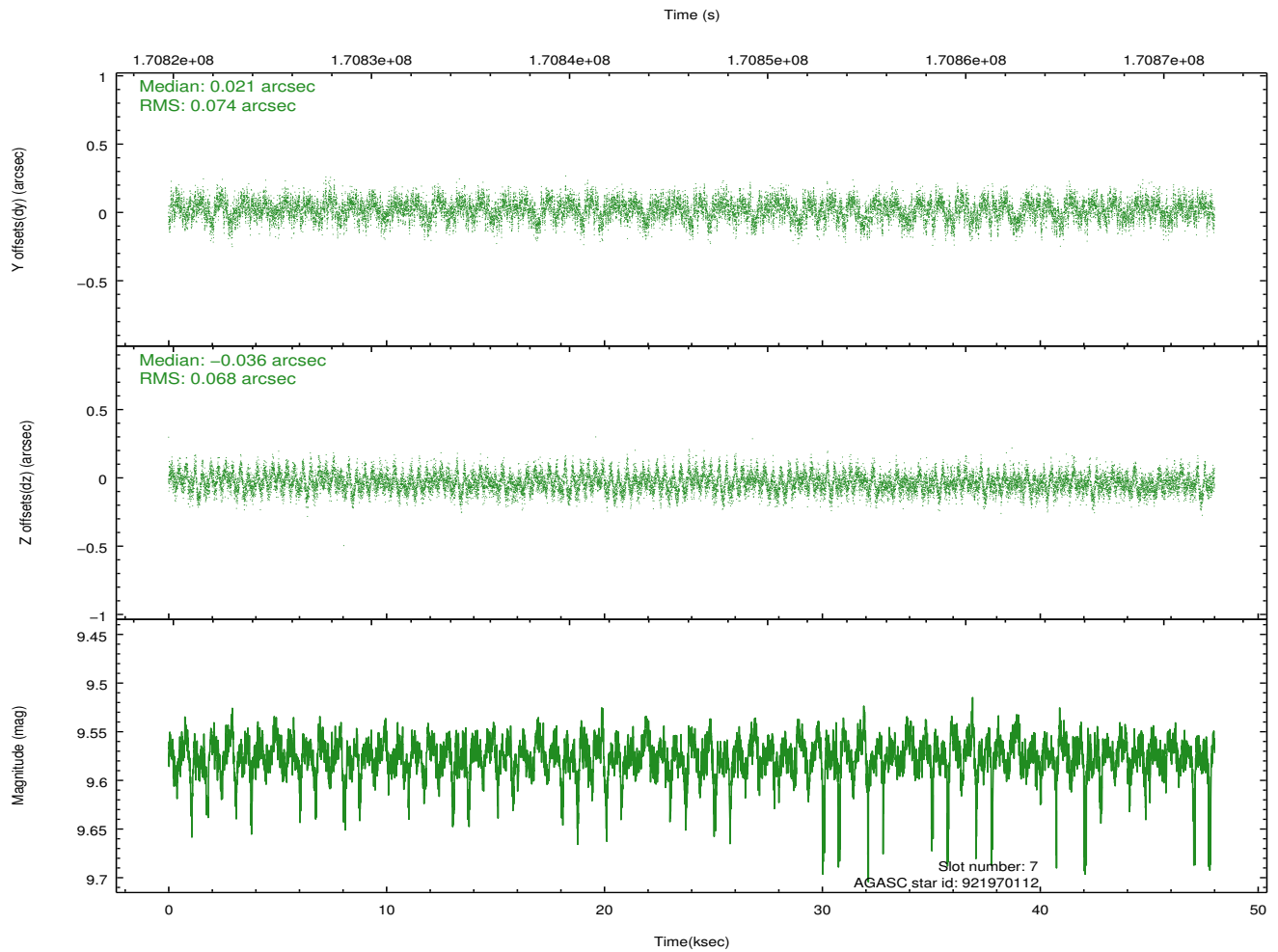
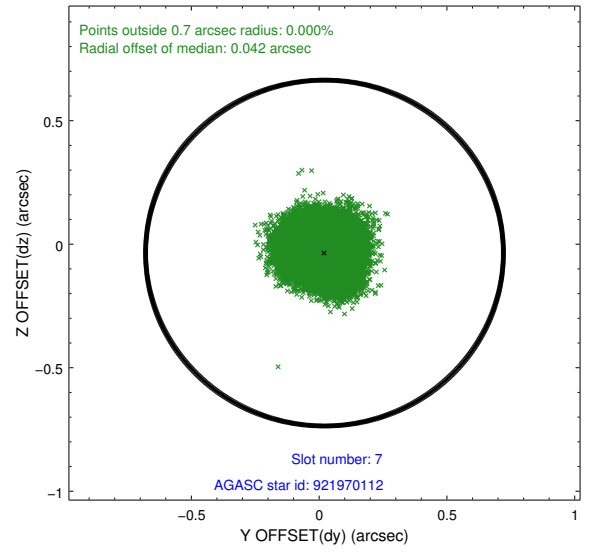
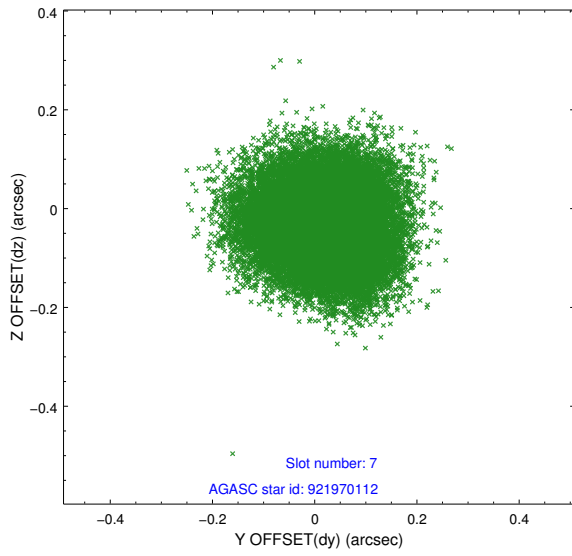
2.4.3 Slot 5



2.4.4 Slot 6

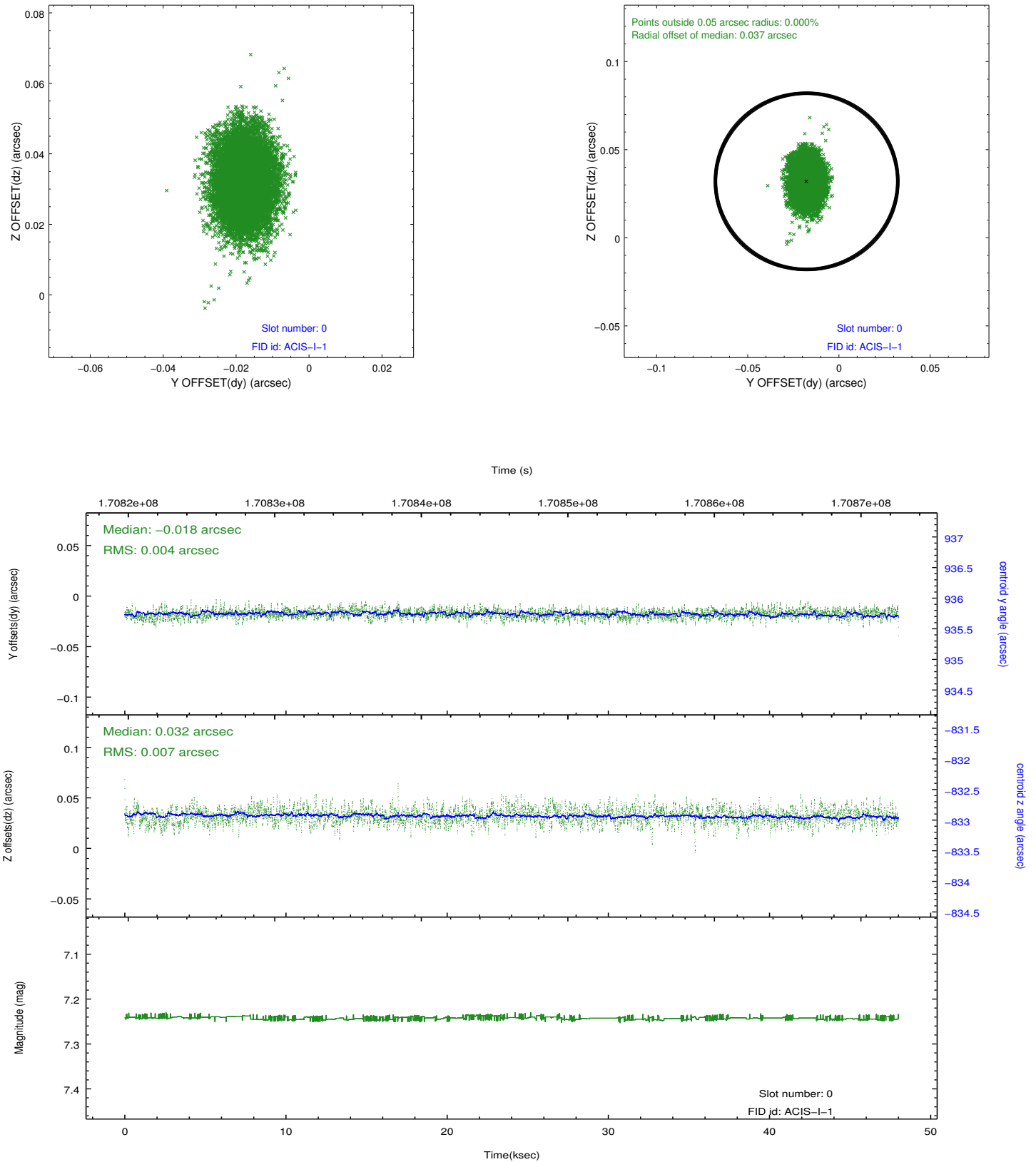


2.4.5 Slot 7

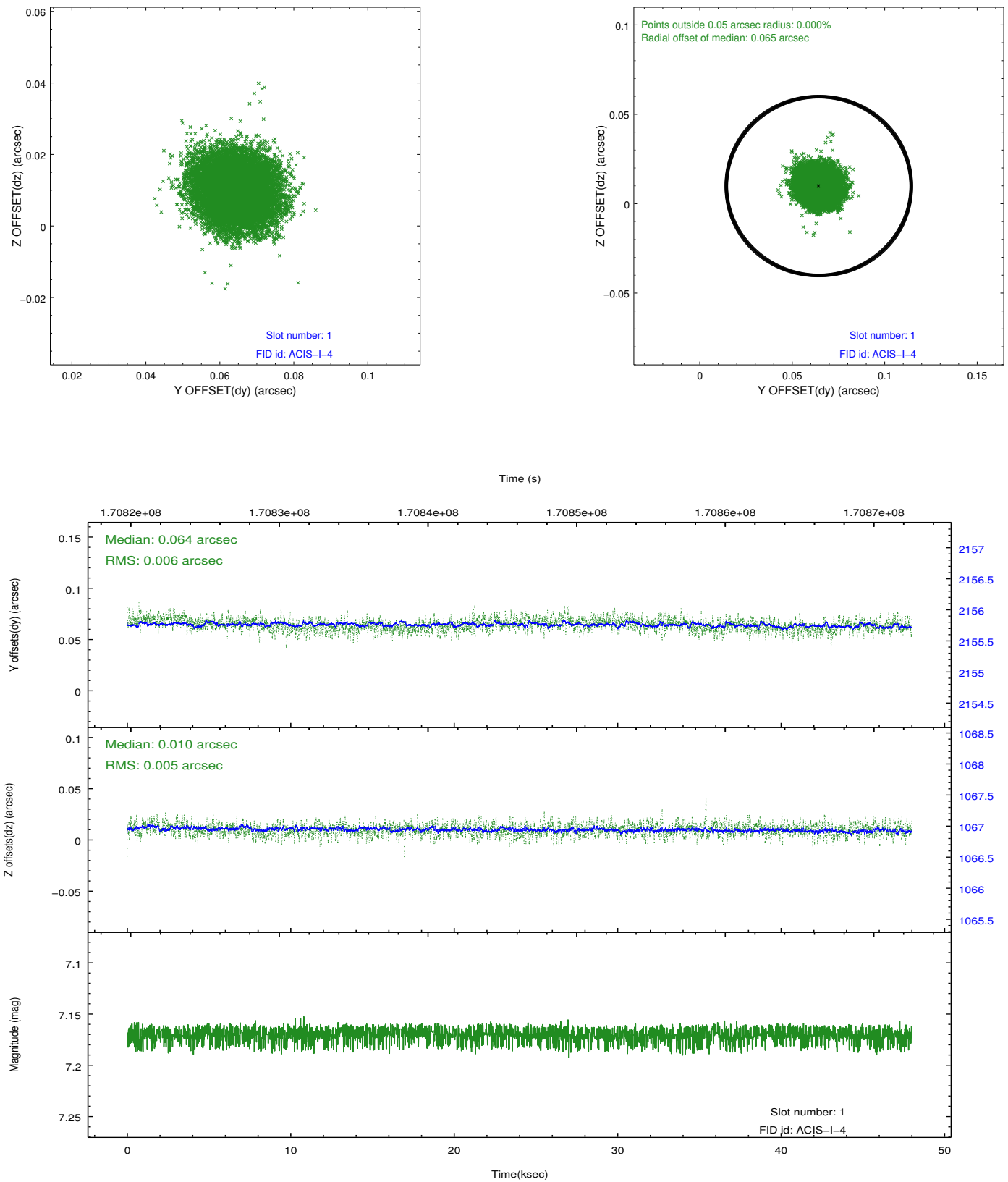


2.5 FID Slots

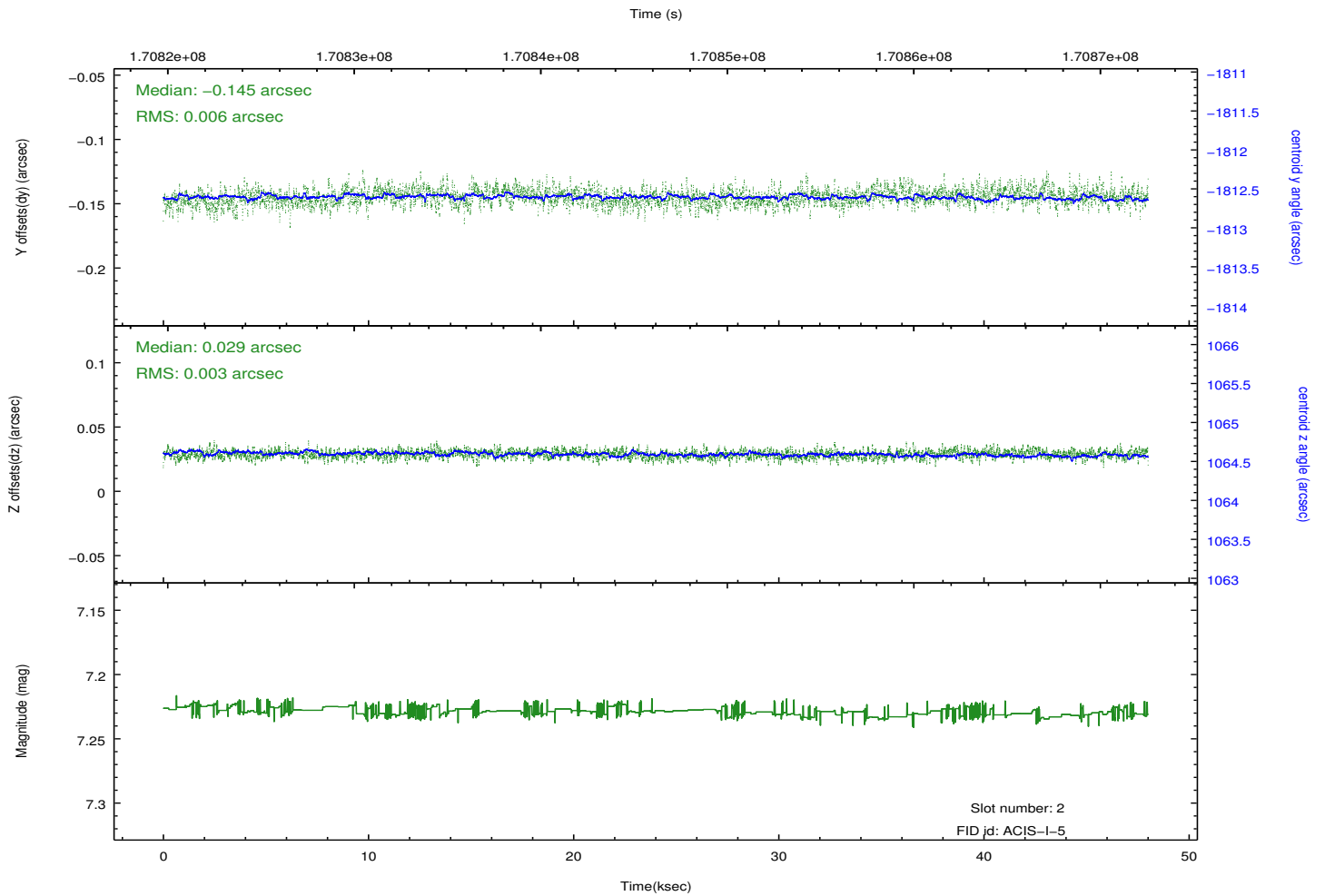
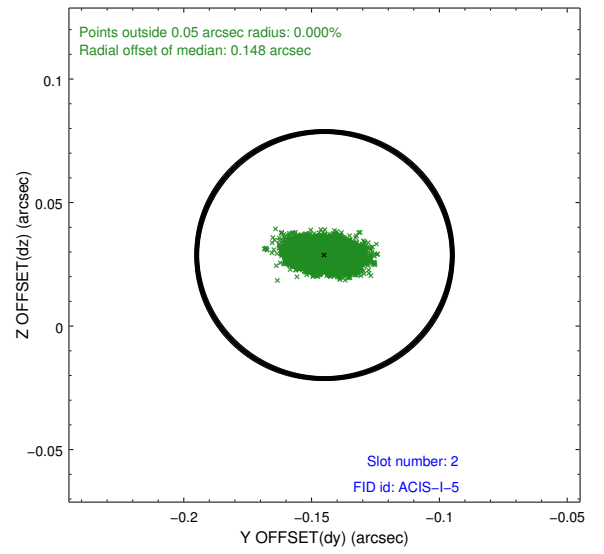
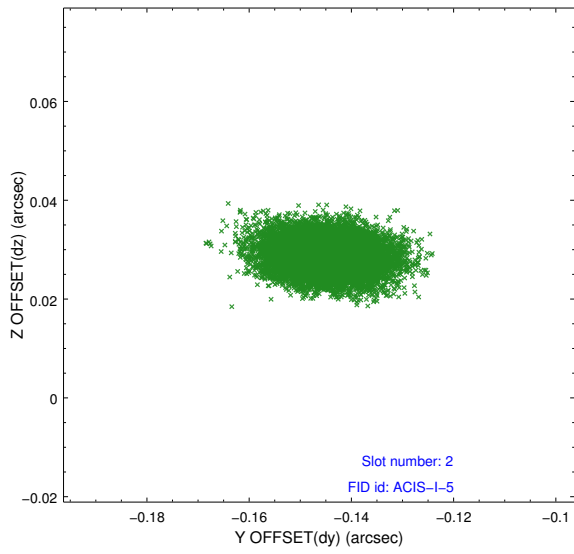
2.5.1 Slot 0



2.5.2 Slot 1



2.5.3 Slot 2



A Summary

A.1 Status

V&V Scientist	Jen Lauer
V&V Date (YYYY-MM-DD)	2012.11.15
V&V Edition	1
V&V Disposition and Status	OK
V&V Charge Time	47.578

A.2 Comments