

V&V Reference Report

L2 ASCDS Version : 8.4.5

Observation 4397 - L2 Version 3
Chandra X-Ray Center

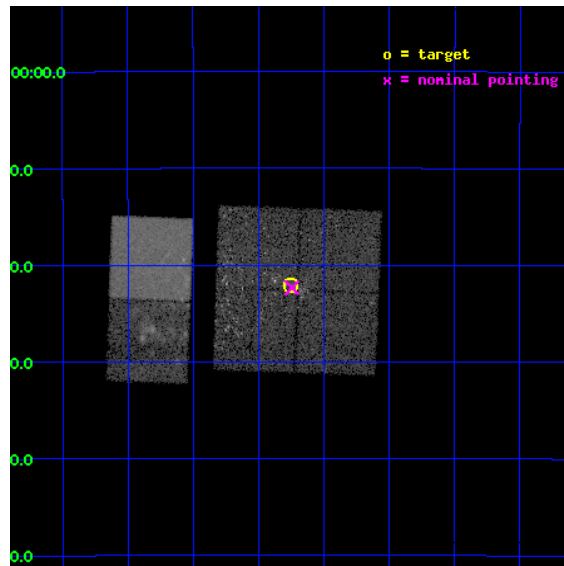
L2 Processing Date : Nov 1 2012

Contents

1	Front	2
2	OBI	3
2.1	OBI	3
2.1.1	Images	3
2.1.2	Bias	3
2.1.3	Parameters	4
2.1.4	Events	4
2.2	Compared Parameters	5
2.3	Aspect	6
2.4	Star Slots	9
2.4.1	Slot 3	9
2.4.2	Slot 4	10
2.4.3	Slot 5	11
2.4.4	Slot 6	12
2.4.5	Slot 7	13
2.5	FID Slots	14
2.5.1	Slot 0	14
2.5.2	Slot 1	15
2.5.3	Slot 2	16
A	Summary	17
A.1	Status	17
A.2	Comments	17

1 Front

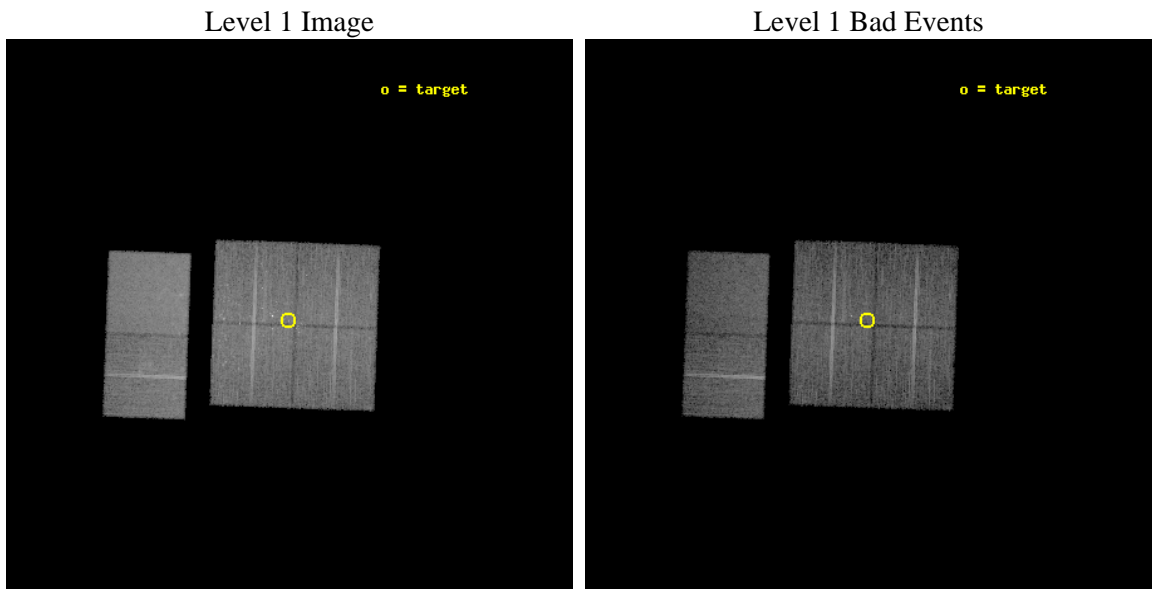
seq_num	200224	Sequence number
obs_id	4397	Observation id
title	DEEP INSIDE THE LAGOON NEBULA	Proposal title
observer	Prof. Marc Gagne	Principal investigator
object	M8	Source name
dtcycle	0	
cycle	P	events from which exps? Prim/Second/Both
ra_targ	270.937917	Observer's specified target RA [deg]
dec_targ	-24.368056	Observer's specified target Dec [deg]
ra_nom	270.93611126394	Nominal RA [deg]
dec_nom	-24.372405879886	Nominal Dec [deg]
roll_nom	272.10793567804	Nominal Roll [deg]
revision	3	Processing version of data
ontime	14822.399944782	Sum of GTIs [s]
livetime	14634.709791704	Livetime [s]
ontime0	14819.158954591	Sum of GTIs [s]
ontime1	14819.158954591	Sum of GTIs [s]
ontime2	14822.399944782	Sum of GTIs [s]
ontime3	14822.399944782	Sum of GTIs [s]
ontime6	14822.399944782	Sum of GTIs [s]
ontime7	14822.399944782	Sum of GTIs [s]
l2events	118022	Number of level 2 events



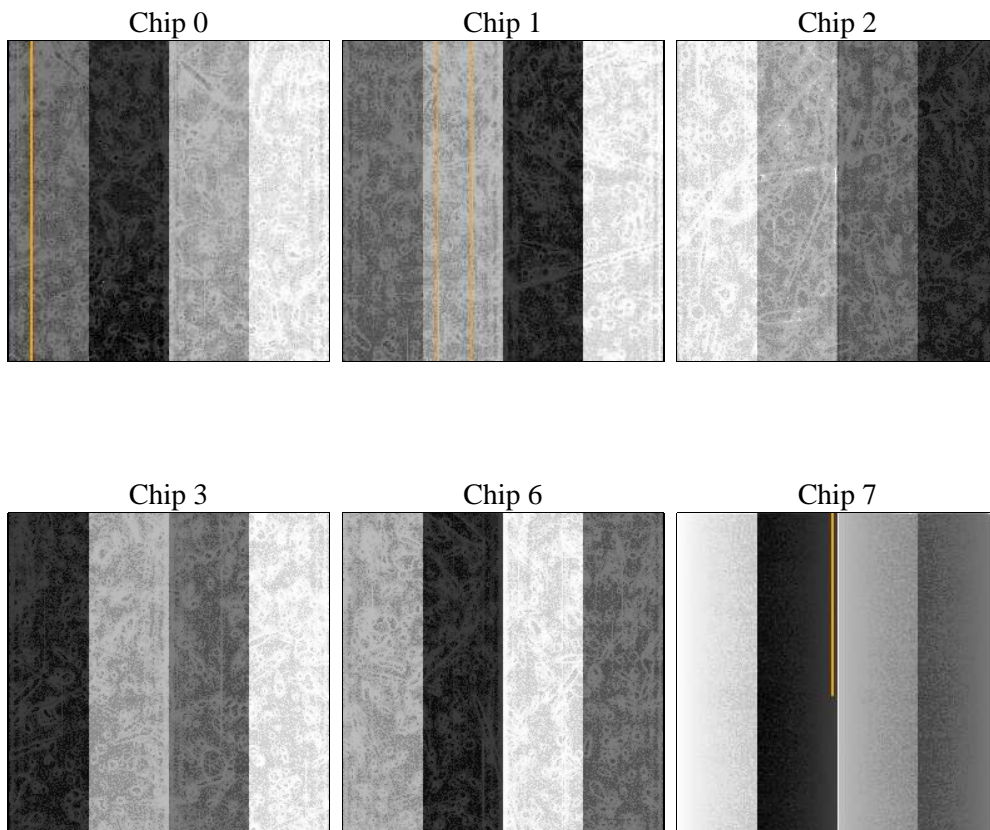
2 OBI

2.1 OBI

2.1.1 Images



2.1.2 Bias



2.1.3 Parameters

obi_num	0	Obi number	sched_exp_time	14687.069000	[s] Scheduled observation exposure time
ascdsver	8.4.5	Processing system revision	ontime	14822.399944782	Sum of GTIs [s]
caldbver	4.5.2	 	ontime0	14819.158954591	Sum of GTIs [s]
date	2012-11-01T09:12:43	Date and time of file creation	ontime1	14819.158954591	Sum of GTIs [s]
revision	3	Processing version of data	ontime2	14822.399944782	Sum of GTIs [s]
			ontime3	14822.399944782	Sum of GTIs [s]
			ontime6	14822.399944782	Sum of GTIs [s]
			ontime7	14822.399944782	Sum of GTIs [s]
			l1events	592691	Number of level 1 events

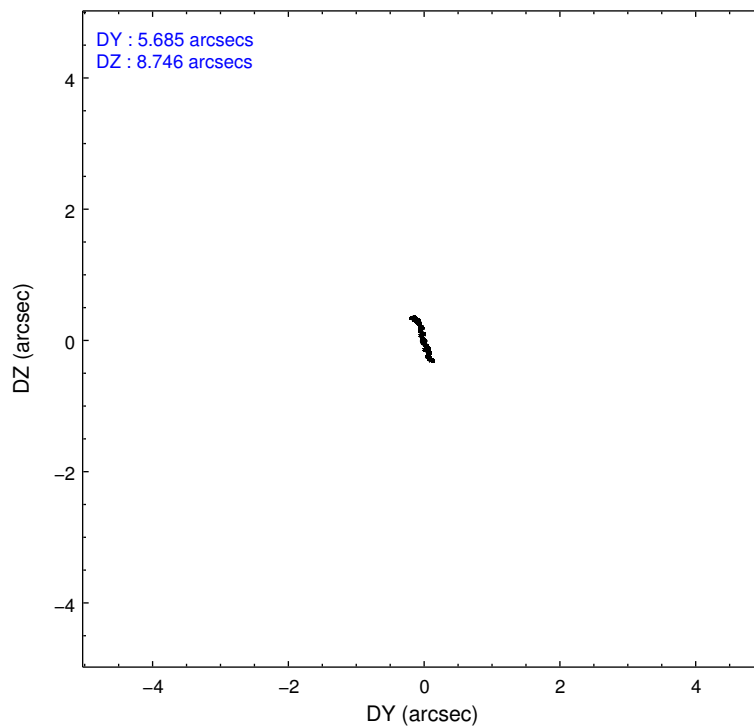
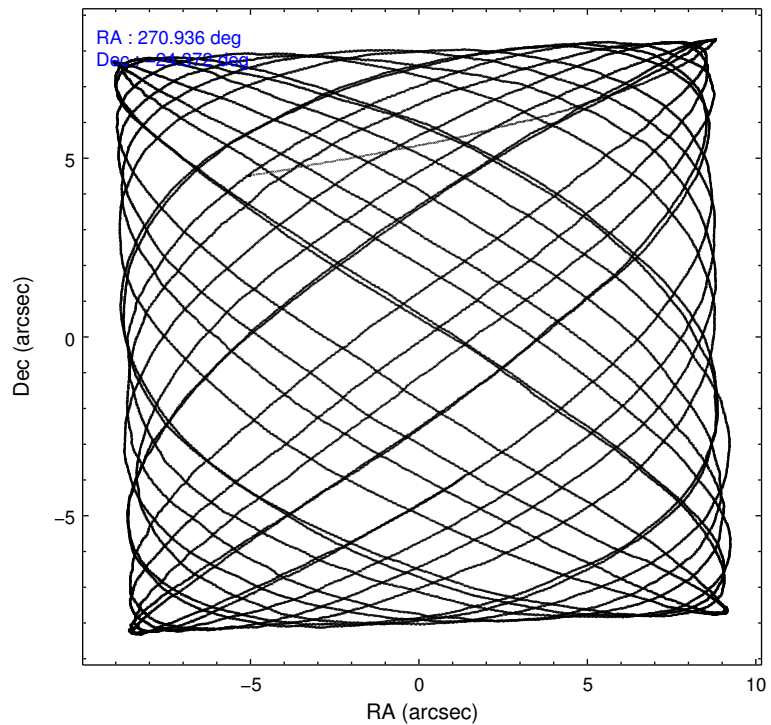
2.1.4 Events

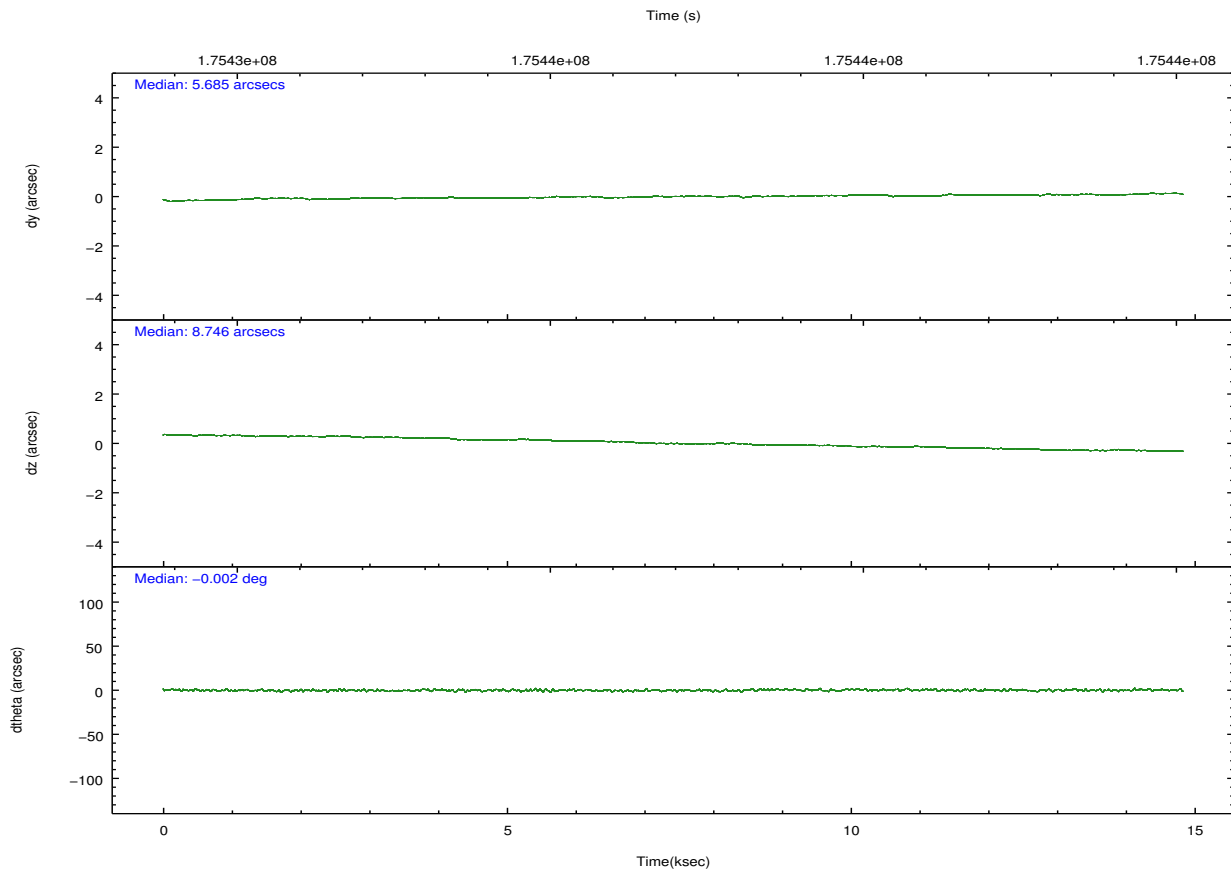
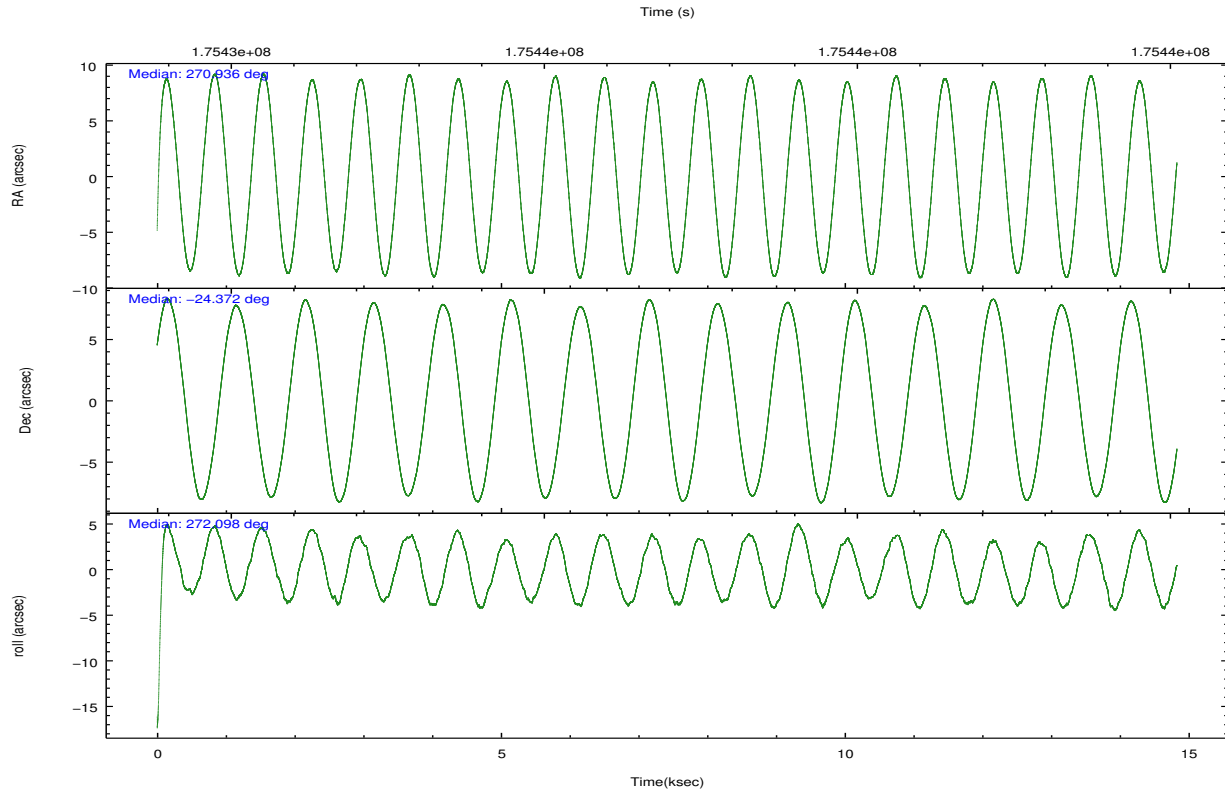
	ccd 0	ccd 1	ccd 2	ccd 3	ccd 6	ccd 7		ccd 0	ccd 1	ccd 2	ccd 3	ccd 6	ccd 7
level 1 events	84925	87939	95594	98343	99411	126479	grade 0 events	5953	6025	8104	11275	7569	5510
rejected events	72531	74610	80959	79676	84408	72768		7%	6%	8%	11%	7%	4%
rejected %	85%	84%	84%	81%	84%	57%	grade 1 events	47	66	70	266	52	131
								0%	0%	0%	0%	0%	0%
							grade 2 events	2399	2597	2439	2856	2679	10992
								2%	2%	2%	2%	2%	8%
							grade 3 events	1121	1204	1110	1272	1208	5004
								1%	1%	1%	1%	1%	3%
							grade 4 events	1017	1214	1154	1306	1274	5038
								1%	1%	1%	1%	1%	3%
							grade 5 events	3591	3867	3491	4140	4240	11951
								4%	4%	3%	4%	4%	9%
							grade 6 events	1936	2321	1859	2000	2321	27284
								2%	2%	1%	2%	2%	21%
							grade 7 events	68861	70645	77367	75228	80068	60569
								81%	80%	80%	76%	80%	47%

2.2 Compared Parameters

Parameter	Planned	Actual	Parameter	Planned	Actual
Instrument	ACIS	ACIS	Obspar format version number	7	7
Detector	ACIS-012367	ACIS-012367	Obspar file type	PREDICTED	ACTUAL
Grating	NONE	NONE	Obspar update status	NONE	UPDATED
Data mode	VFAINT	VFAINT	Number of optional ACIS chips dropped	0	0
Observation mode	POINTING	POINTING	On-chip summing requested	N	N
[deg] Pointing RA	270.920021	270.9361112639383	Subarray requested	NONE	NONE
[deg] Pointing Dec	-24.349255	-24.37240587988601	Alternating exposures requested	N	N
[deg] Pointing Roll	271.892623	272.107935678036	[s] Primary exposure time	0.000000	3.2
[mm] SIM focus pos	-0.782348	-0.7809083437167272			
[mm] SIM defocus	0	0.001439871863259334			
[mm] SIM translation stage pos	-233.592463	-233.5874344608287			
[mm] SIM translation stage offset	0	-0.005018542100998502			
[s] Observation start time (MET)	175429687.184000	175428510.03808			
Observation start date	2003-07-24T10:27:03	2003-07-24T10:08:30			
[s] Observation end time (MET)	175444374.184000	175444688.63877			
Observation end date	2003-07-24T14:31:50	2003-07-24T14:38:08			
Read mode	TIMED	TIMED			

2.3 Aspect





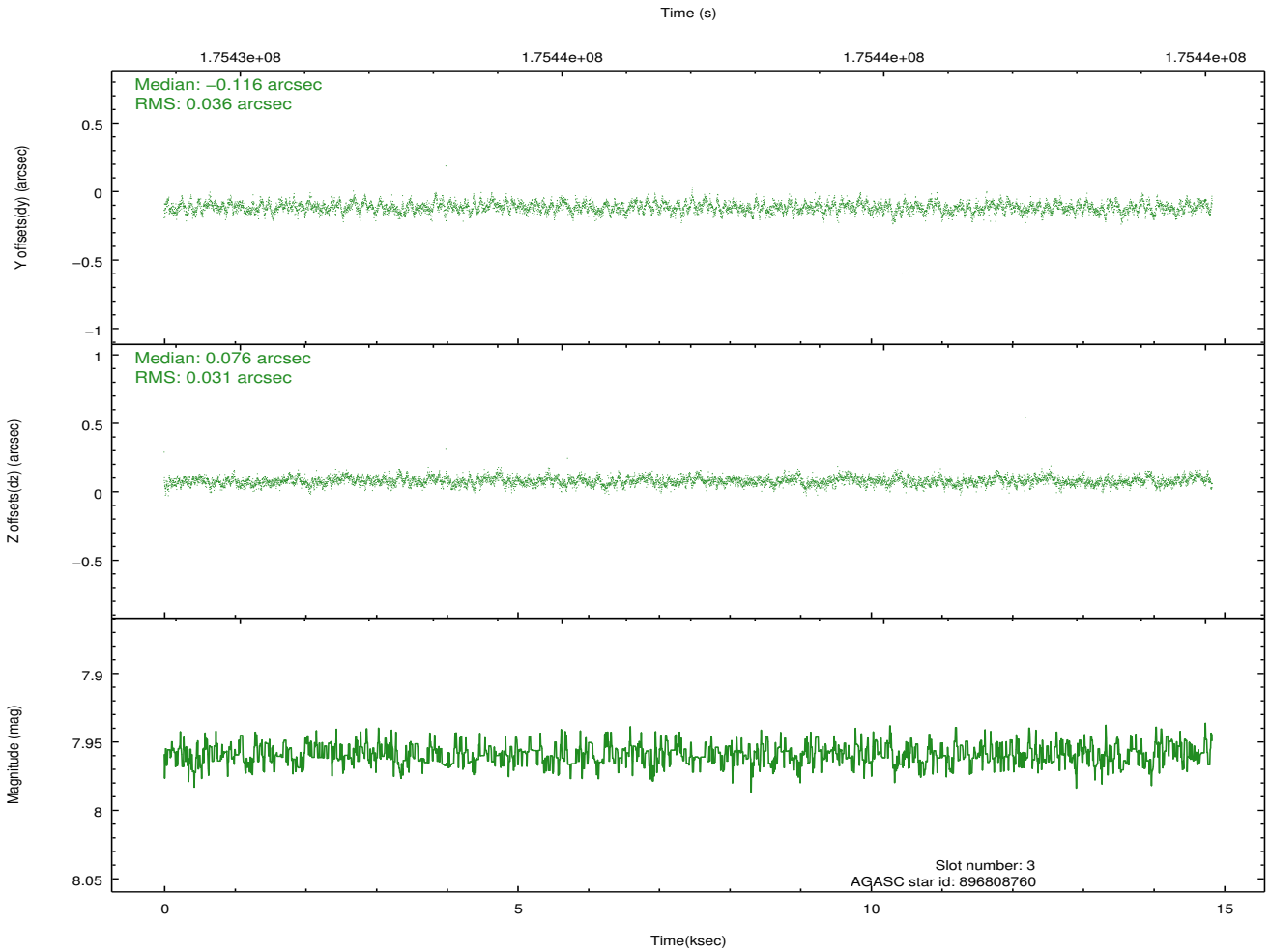
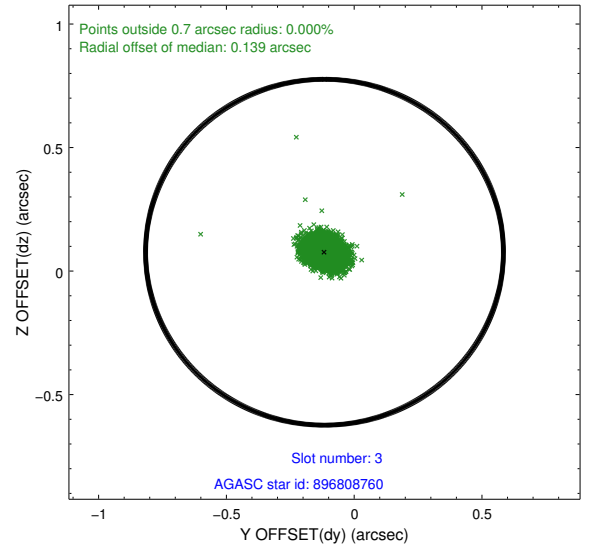
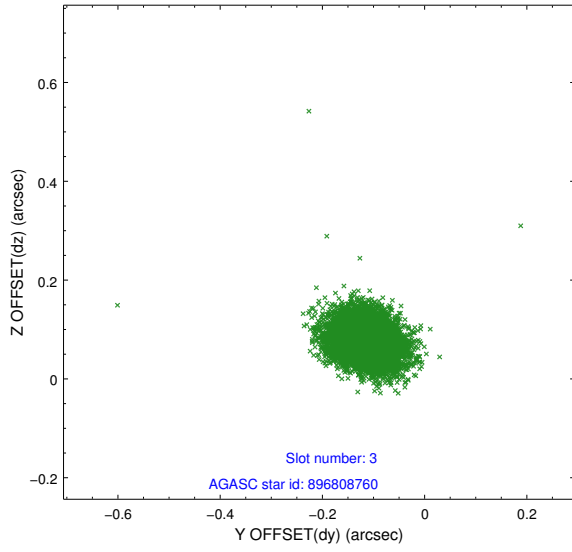
Slot Statistics

slot	status	id	mag	n_pts	med_dy	med_dz	dr1	dr2	ra	dec	mean_y	mean_z
0	FID	ACIS-I-2	7.13	3618	-0.105	-0.036	0.007	0.012	0.000000	0.000000	-760.24	-838.60
1	FID	ACIS-I-4	7.18	3617	0.029	0.063	0.010	0.017	0.000000	0.000000	2153.82	1067.50
2	FID	ACIS-I-6	7.25	3618	-0.025	0.037	0.011	0.018	0.000000	0.000000	400.32	1710.02
3	GUIDE	896808760	7.96	7234	-0.116	0.076	0.050	0.081	271.232719	-23.698206	-2307.29	1107.53
4	GUIDE	896807552	9.21	7234	0.048	-0.022	0.104	0.162	271.624054	-24.159158	-602.11	2333.89
5	GUIDE	897321504	8.81	7235	0.019	-0.021	0.093	0.151	270.176705	-24.677132	1106.69	-2468.78
6	GUIDE	897325632	8.56	7231	0.160	-0.075	0.094	0.150	270.212330	-24.788521	1511.15	-2364.13
7	GUIDE	897321352	7.41	7234	-0.110	0.046	0.047	0.084	270.295938	-25.001856	2286.32	-2112.63

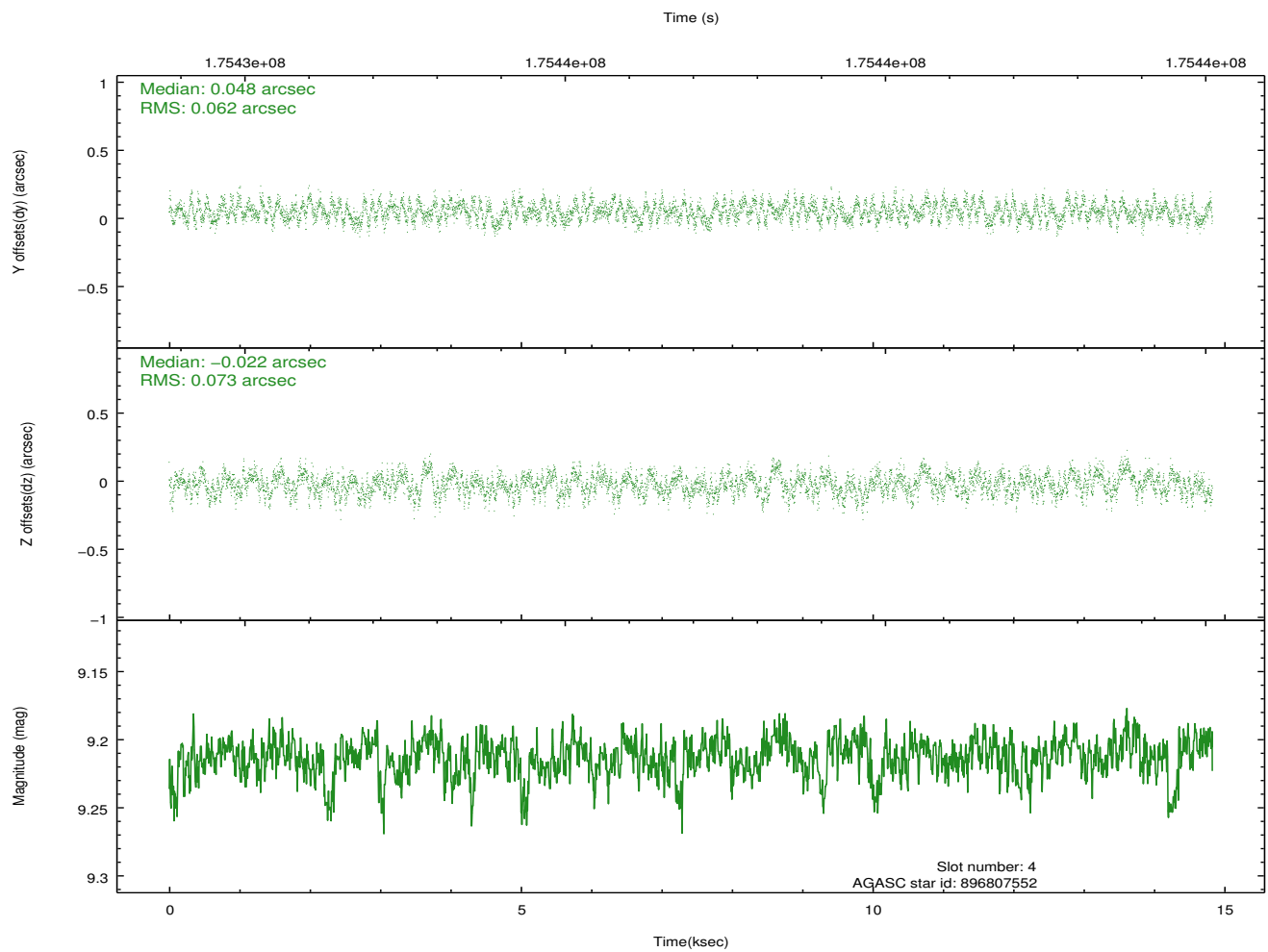
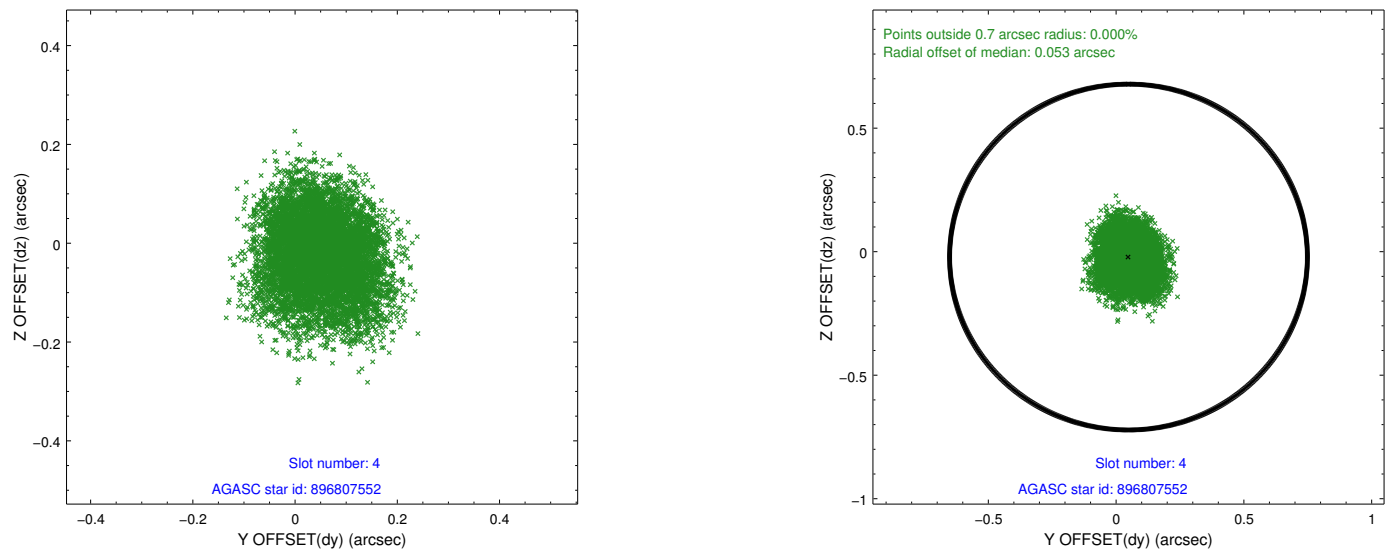
∞

2.4 Star Slots

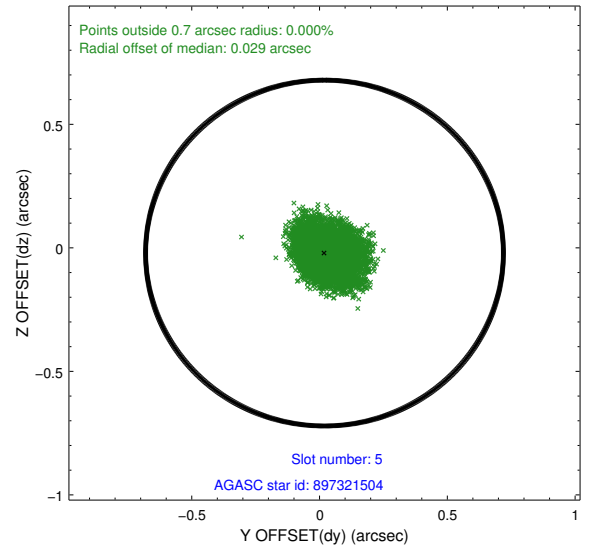
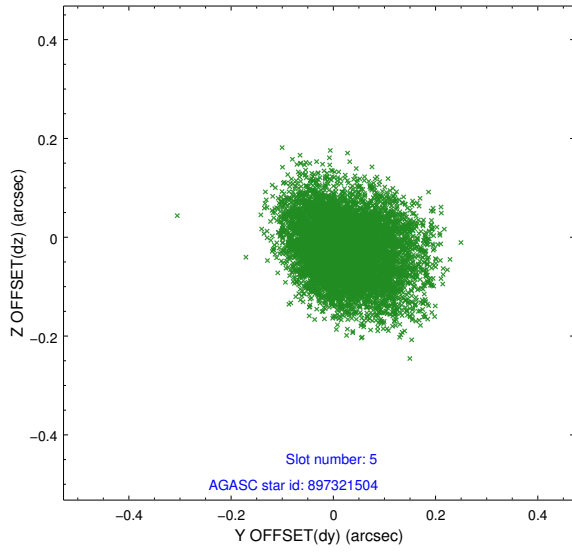
2.4.1 Slot 3



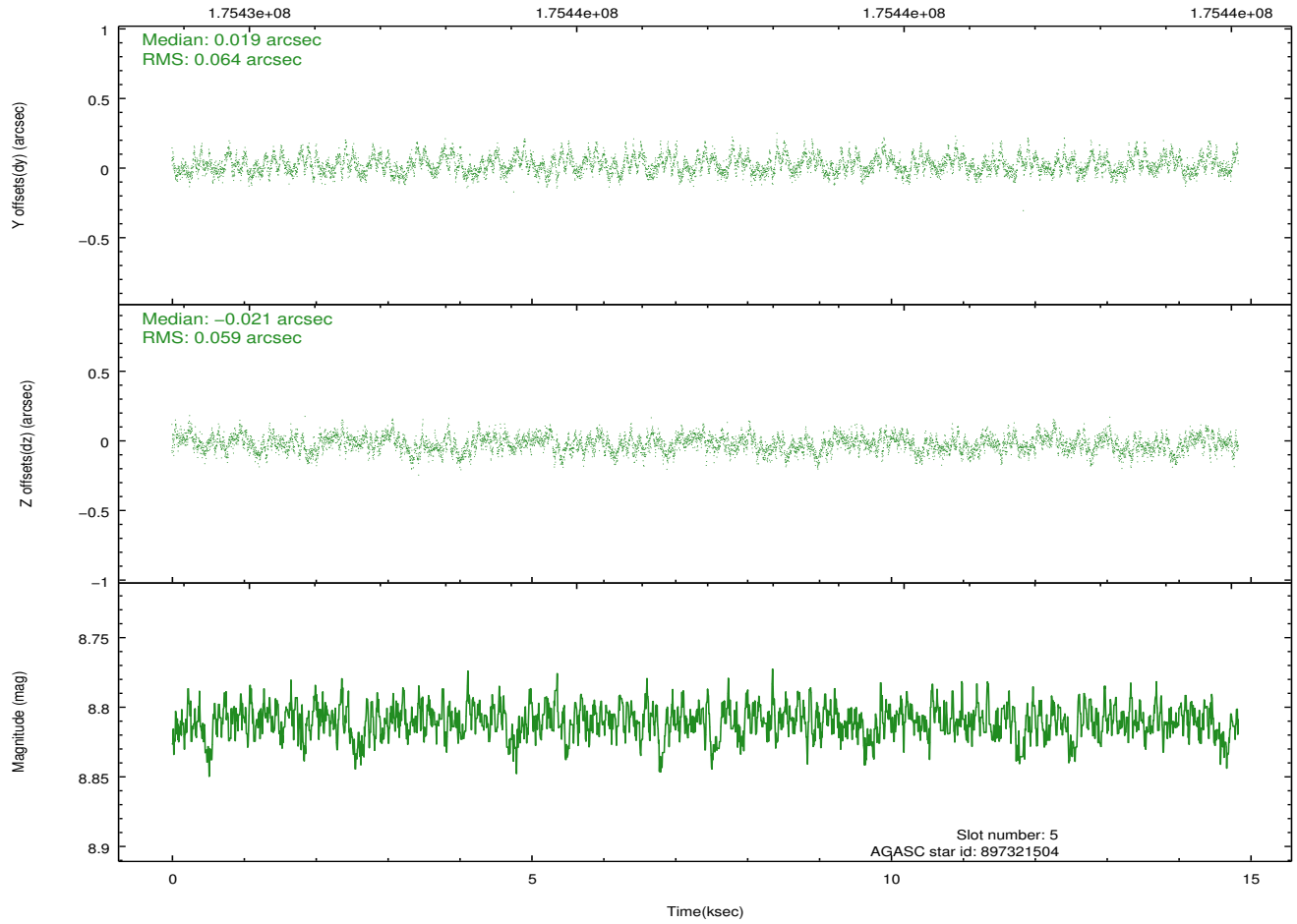
2.4.2 Slot 4



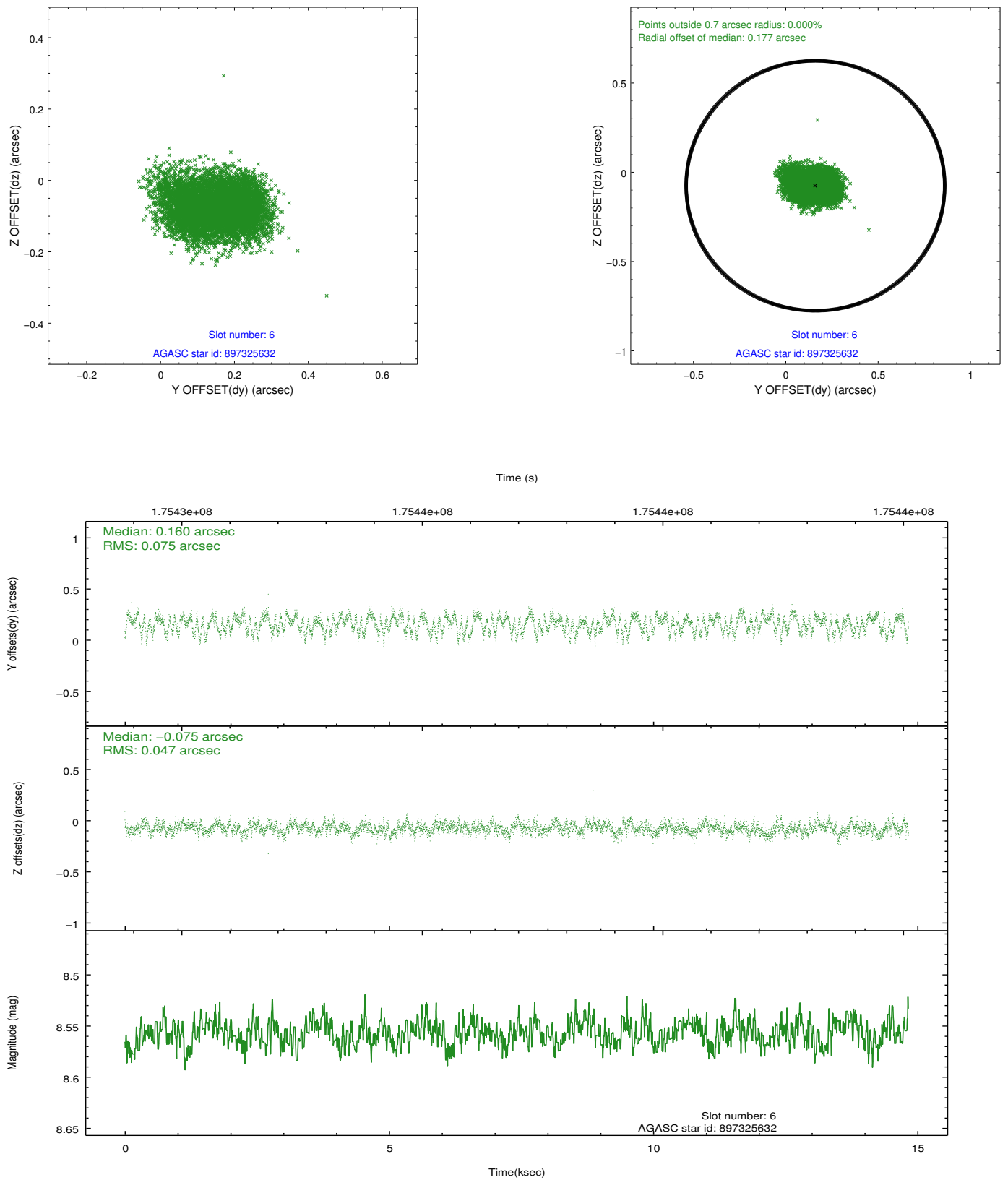
2.4.3 Slot 5



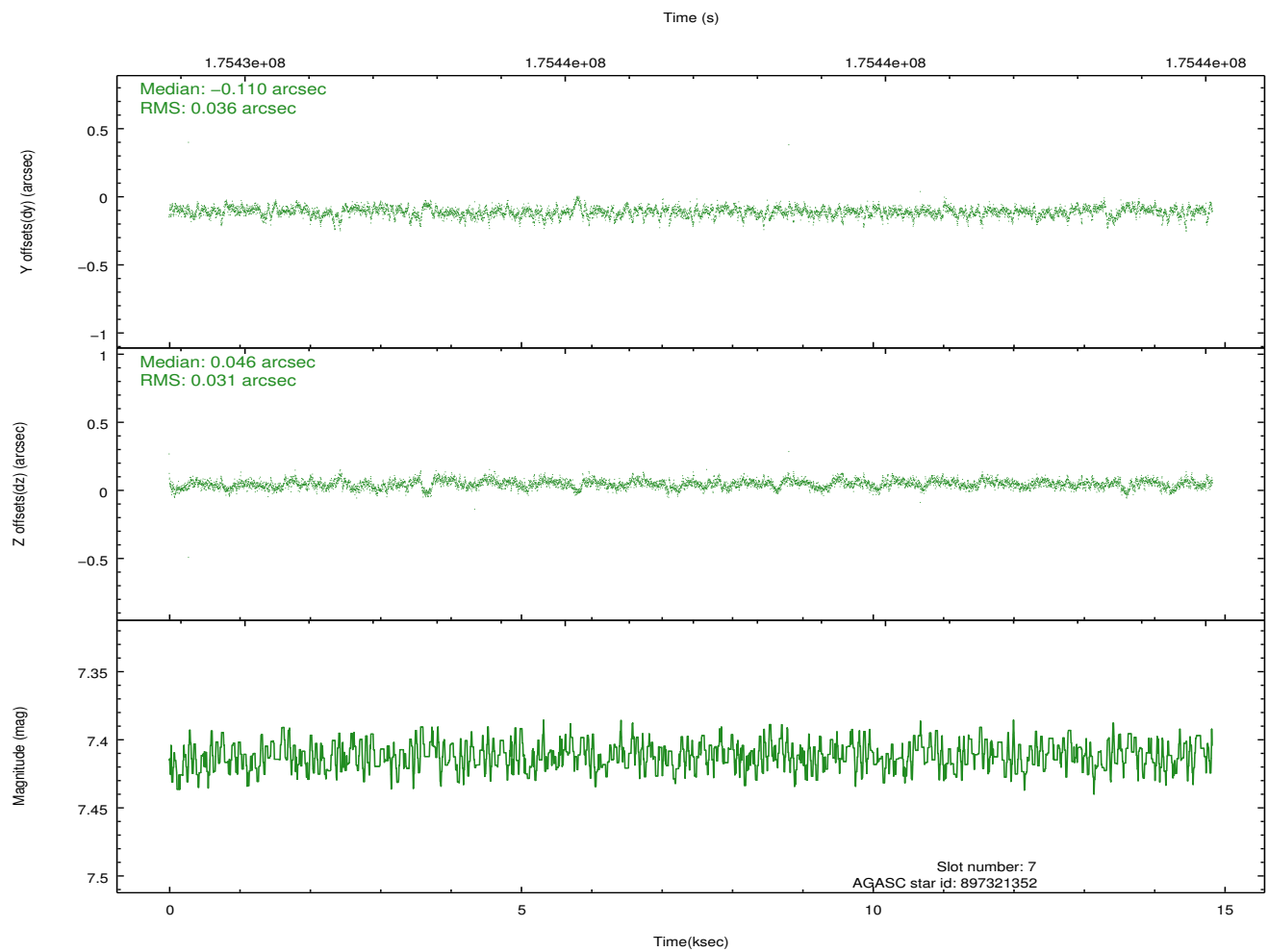
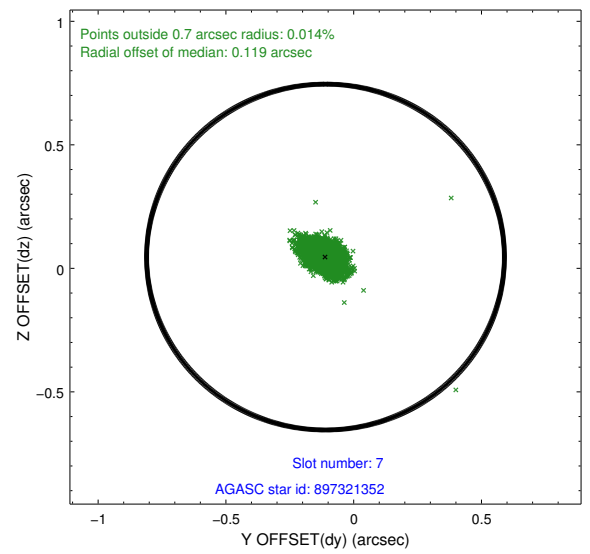
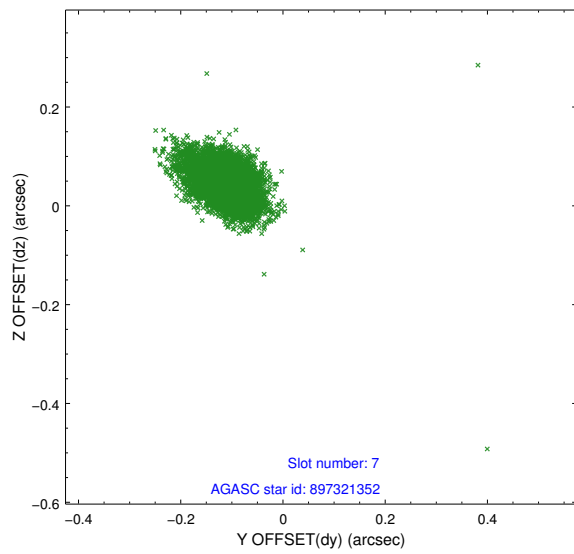
Time (s)



2.4.4 Slot 6

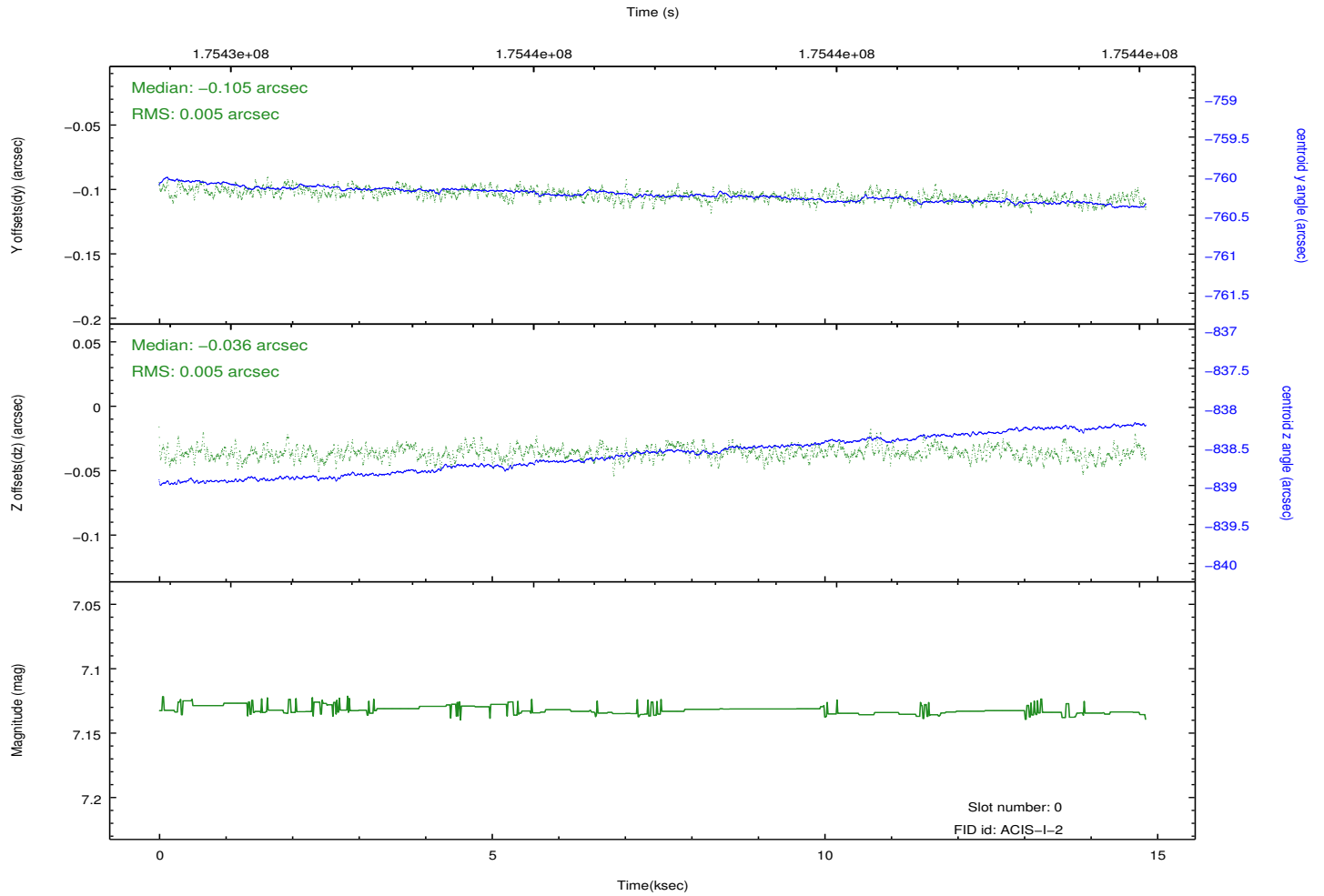
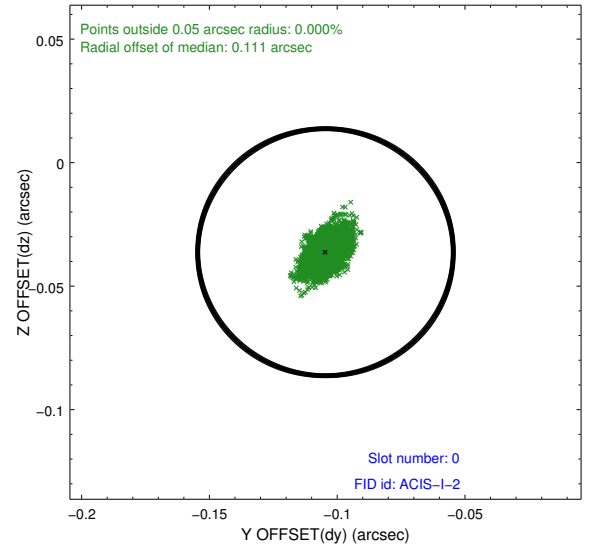
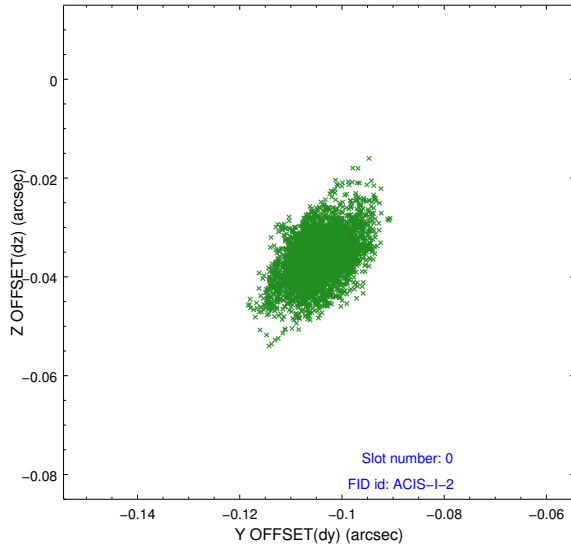


2.4.5 Slot 7

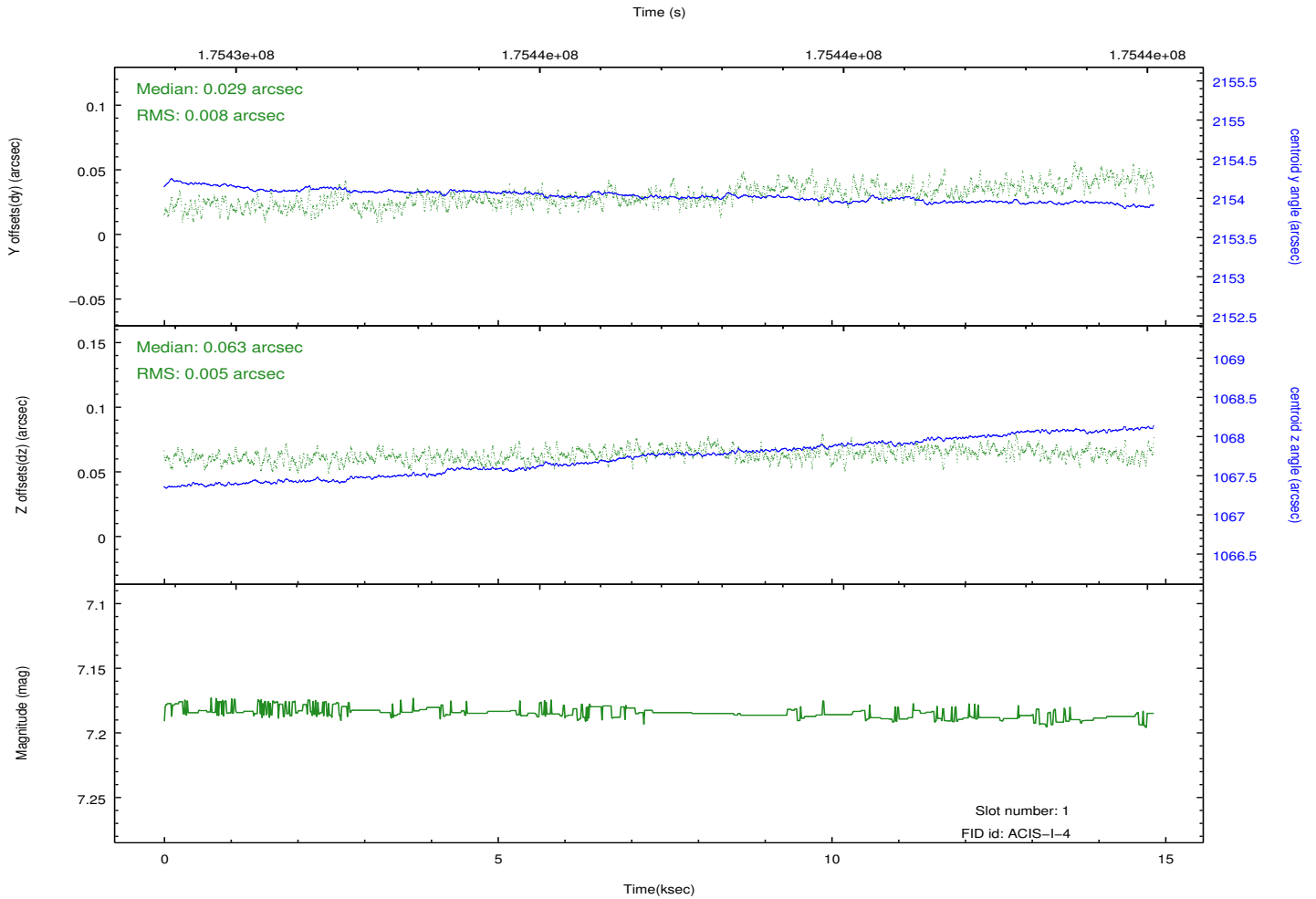
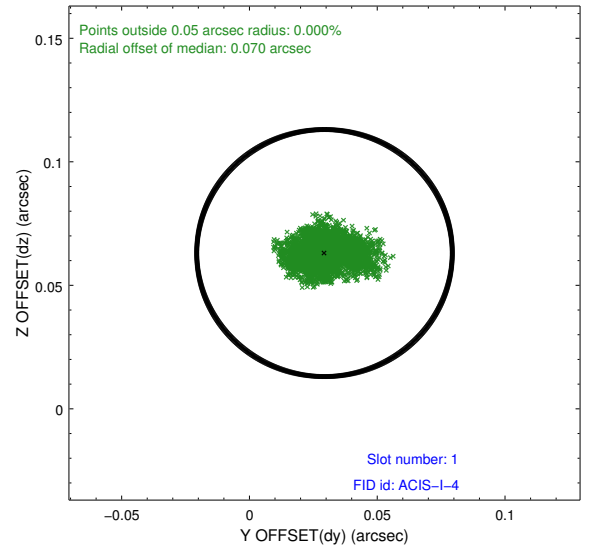
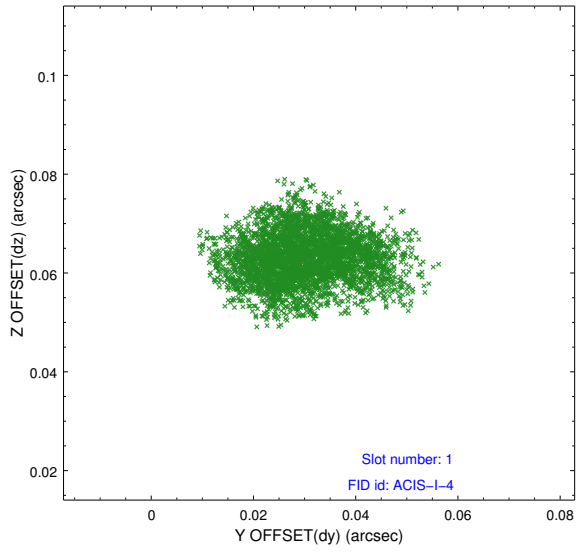


2.5 FID Slots

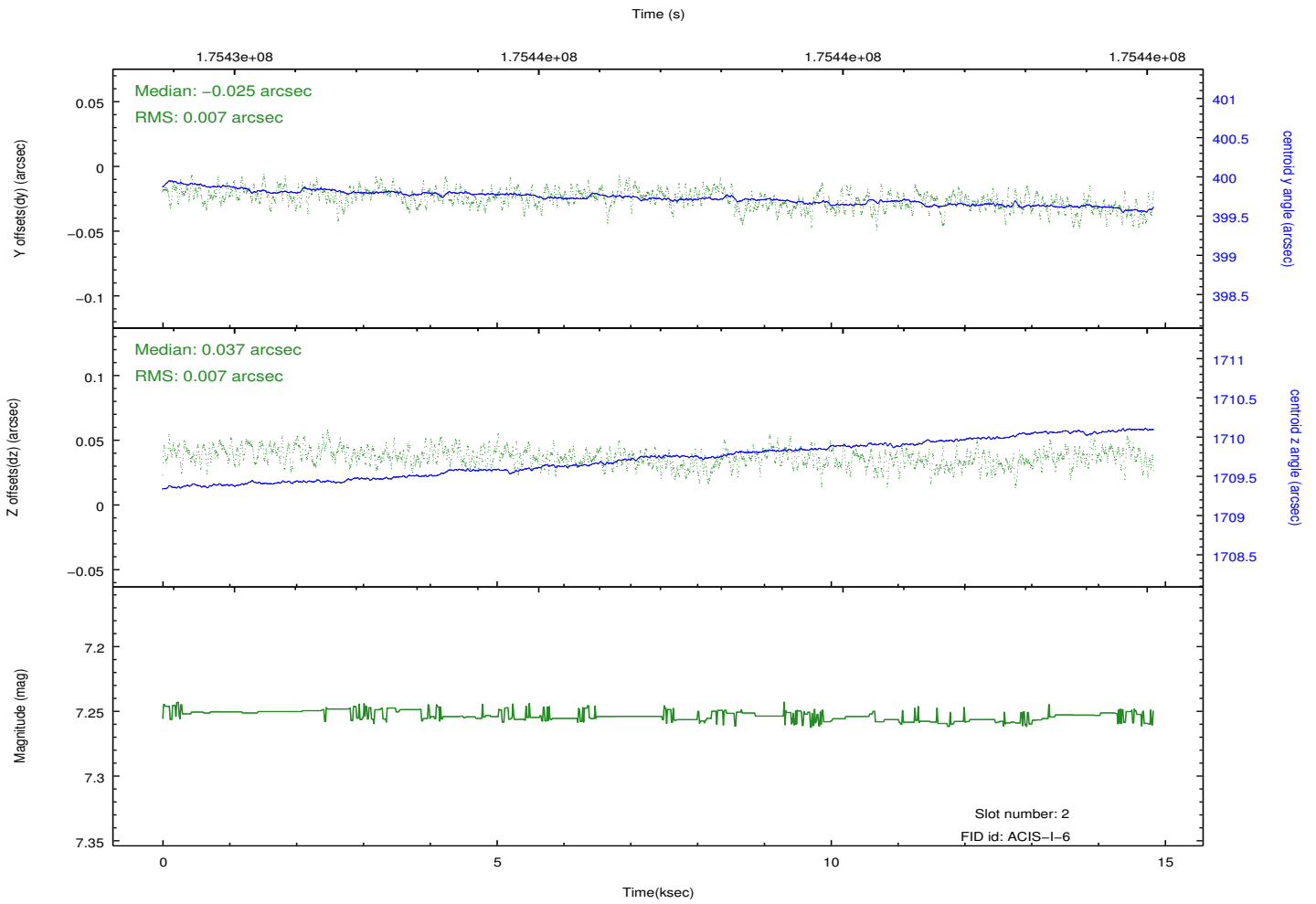
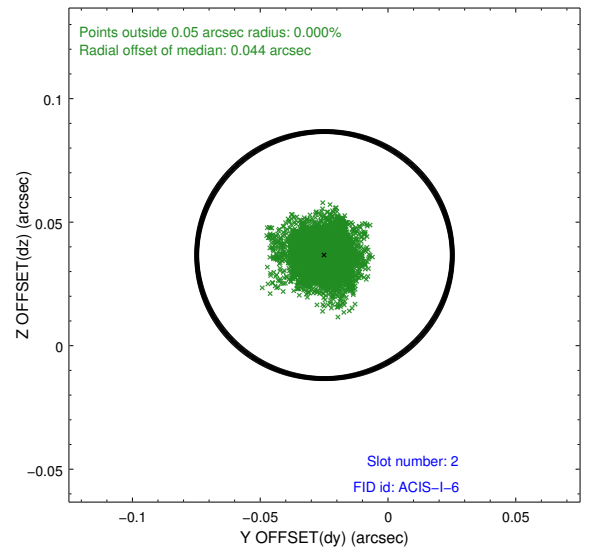
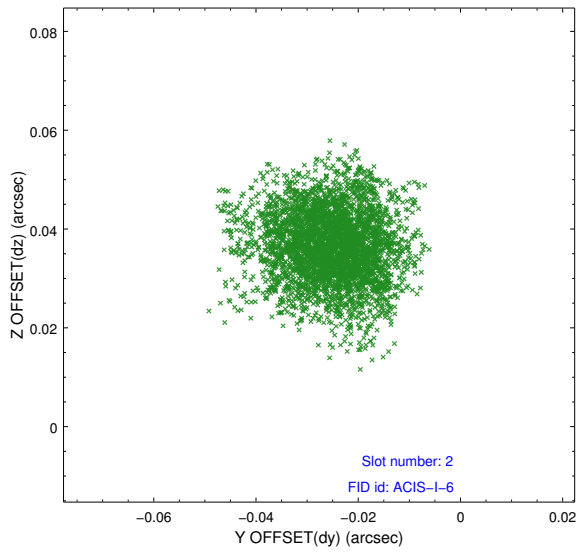
2.5.1 Slot 0



2.5.2 Slot 1



2.5.3 Slot 2



A Summary

A.1 Status

V&V Scientist	Jen Lauer
V&V Date (YYYY-MM-DD)	2012.11.16
V&V Edition	1
V&V Disposition and Status	OK
V&V Charge Time	14.822

A.2 Comments