

V&V Reference Report

L2 ASCDS Version : 8.5.1.1

Observation 5417 - L2 Version 3
Chandra X-Ray Center

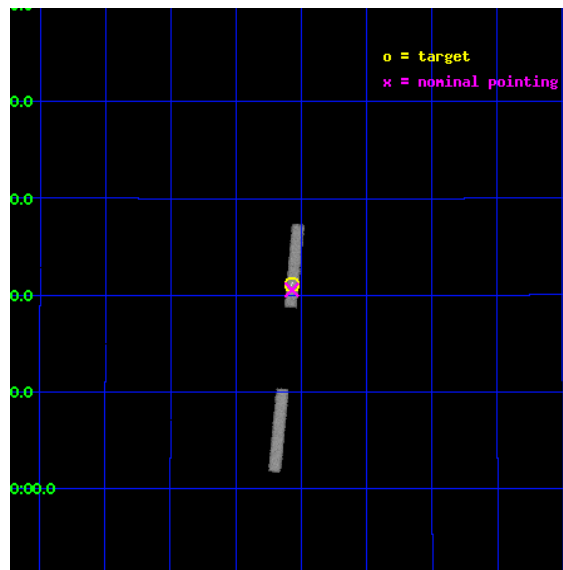
L2 Processing Date : Jan 3 2013

Contents

1	Front	2
2	OBI	3
2.1	OBI	3
2.1.1	Images	3
2.1.2	Bias	3
2.1.3	Parameters	4
2.1.4	Events	4
2.2	Compared Parameters	5
2.3	Aspect	6
2.4	Star Slots	9
2.4.1	Slot 3	9
2.4.2	Slot 4	10
2.4.3	Slot 5	11
2.4.4	Slot 6	12
2.5	FID Slots	13
2.5.1	Slot 0	13
2.5.2	Slot 1	14
2.5.3	Slot 2	15
A	Summary	16
A.1	Status	16
A.2	Comments	16

1 Front

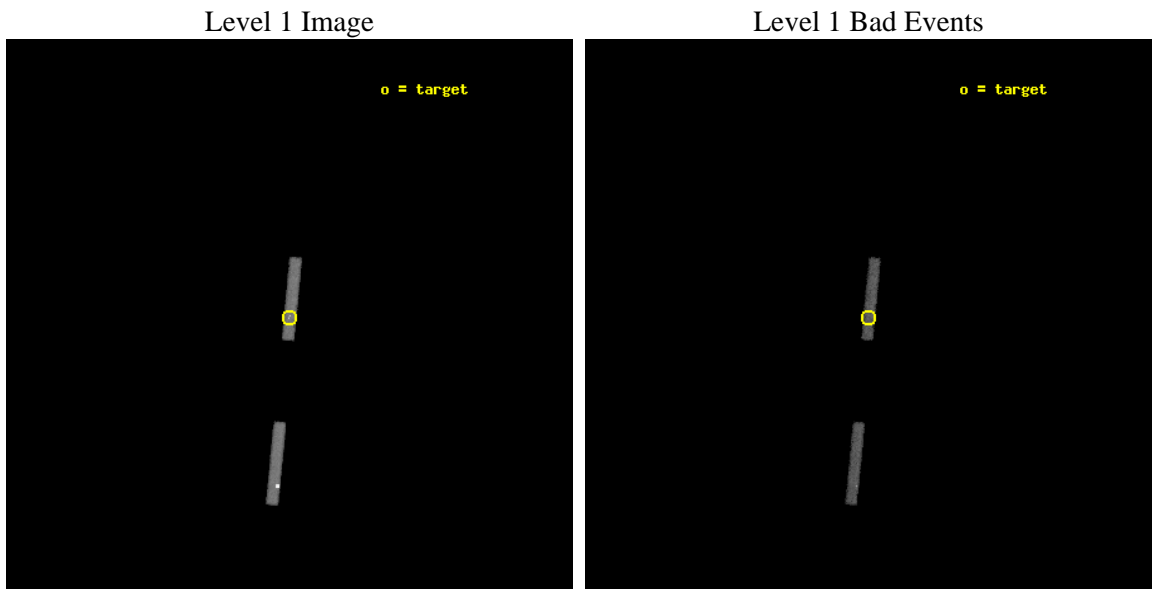
seq_num	200350	Sequence number
obs_id	5417	Observation id
title	Untangling the Accretion Spots on Classical T Tauri Stars	Proposal
observer	Dr. Andisheh Mahdavi	Principal investigator
object	GK Tau	Source name
dtycycle	0	
cycle	P	events from which exps? Prim/Second/Both
ra_targ	68.39375	Observer's specified target RA [deg]
dec_targ	24.3525	Observer's specified target Dec [deg]
ra_nom	68.392889961756	Nominal RA [deg]
dec_nom	24.342838852431	Nominal Dec [deg]
roll_nom	275.54324386454	Nominal Roll [deg]
revision	3	Processing version of data
ontime	15227.0	Sum of GTIs [s]
livetime	14071.972497412	Livetime [s]
ontime5	15227.0	Sum of GTIs [s]
ontime7	15227.0	Sum of GTIs [s]
l2events	19464	Number of level 2 events



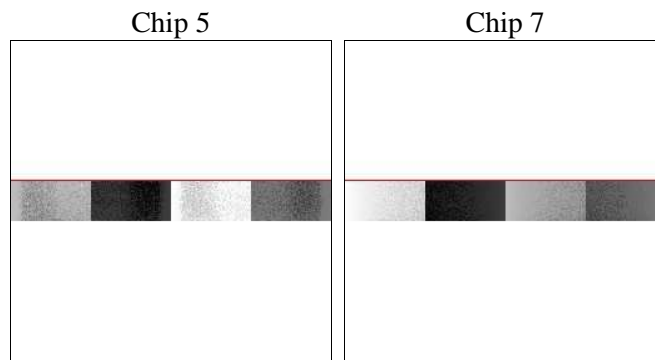
2 OBI

2.1 OBI

2.1.1 Images



2.1.2 Bias



2.1.3 Parameters

obi_num	0	Obi number	sched_exp_time	15200.000000	[s] Scheduled observation exposure time
ascdsver	8.5.1.1	Processing system revision	ontime	15227.0	Sum of GTIs [s]
caldsver	4.5.5	 	ontime5	15227.0	Sum of GTIs [s]
date	2013-01-03T18:07:54	Date and time of file creation	ontime7	15227.0	Sum of GTIs [s]
revision	3	Processing version of data	l1events	69717	Number of level 1 events

2.1.4 Events

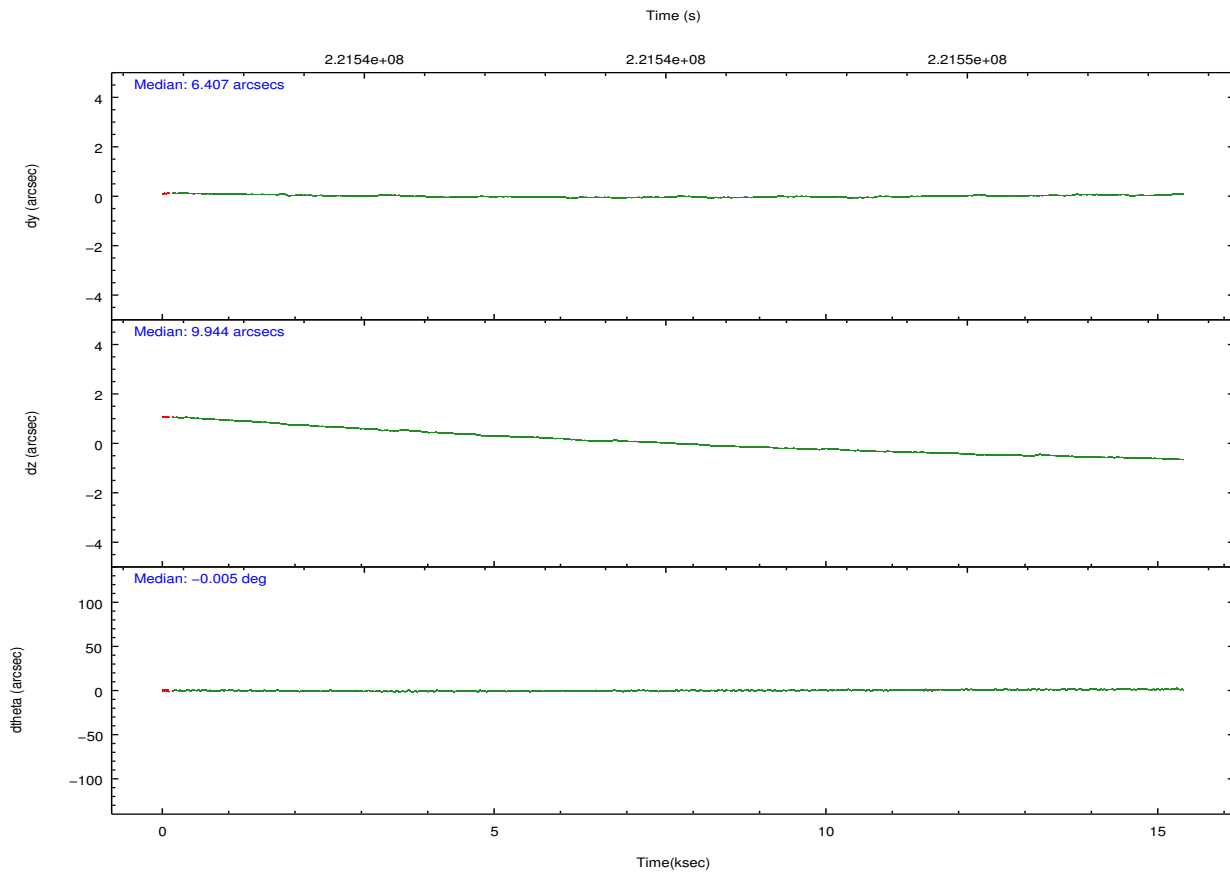
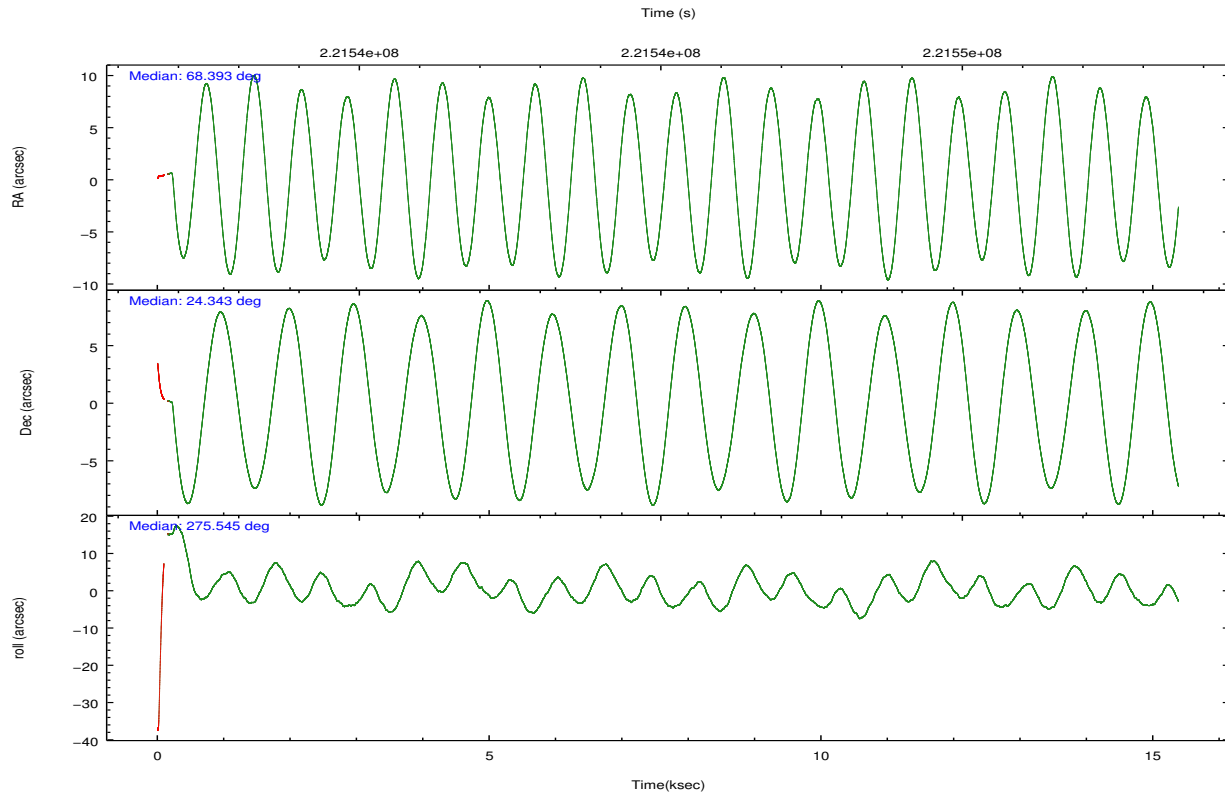
	ccd 5	ccd 7
level 1 events	48284	21433
rejected events	11259	10992
rejected %	23%	51%

	ccd 5	ccd 7
grade 0 events	15886	1498
	32%	6%
grade 1 events	89	29
	0%	0%
grade 2 events	15555	2190
	32%	10%
grade 3 events	848	1288
	1%	6%
grade 4 events	876	1215
	1%	5%
grade 5 events	1677	1803
	3%	8%
grade 6 events	4779	4495
	9%	20%
grade 7 events	8574	8915
	17%	41%

2.2 Compared Parameters

Parameter	Planned	Actual	Parameter	Planned	Actual
Instrument	ACIS	ACIS	Obspar format version number	7	7
Detector	ACIS-57	ACIS-57	Obspar file type	PREDICTED	ACTUAL
Grating	NONE	NONE	Obspar update status	NONE	UPDATED
Data mode	FAINT	FAINT	Number of optional ACIS chips dropped	0	0
Observation mode	POINTING	POINTING	On-chip summing requested	N	N
[deg] Pointing RA	68.375199	68.39288996175583	Subarray requested	CUSTOM	1/8
[deg] Pointing Dec	24.364800	24.34283885243146	Subarray start row	449	449
[deg] Pointing Roll	275.393953	275.5432438645421	Subarray row count	128	128
[mm] SIM focus pos	-0.684267	-0.6828225247311905	Alternating exposures requested	N	N
[mm] SIM defocus	0	0.001444936568705701	[s] Primary exposure time	0.000000	0.5
[mm] SIM translation stage pos	-190.132523	-190.1400660498719			
[mm] SIM translation stage offset	0	0.00754346686406393			
[s] Observation start time (MET)	221537612.184000	221536840.95209			
Observation start date	2005-01-08T02:12:28	2005-01-08T02:00:40			
[s] Observation end time (MET)	221552812.184000	221553413.66534			
Observation end date	2005-01-08T06:25:48	2005-01-08T06:36:53			
Read mode	TIMED	TIMED			

2.3 Aspect

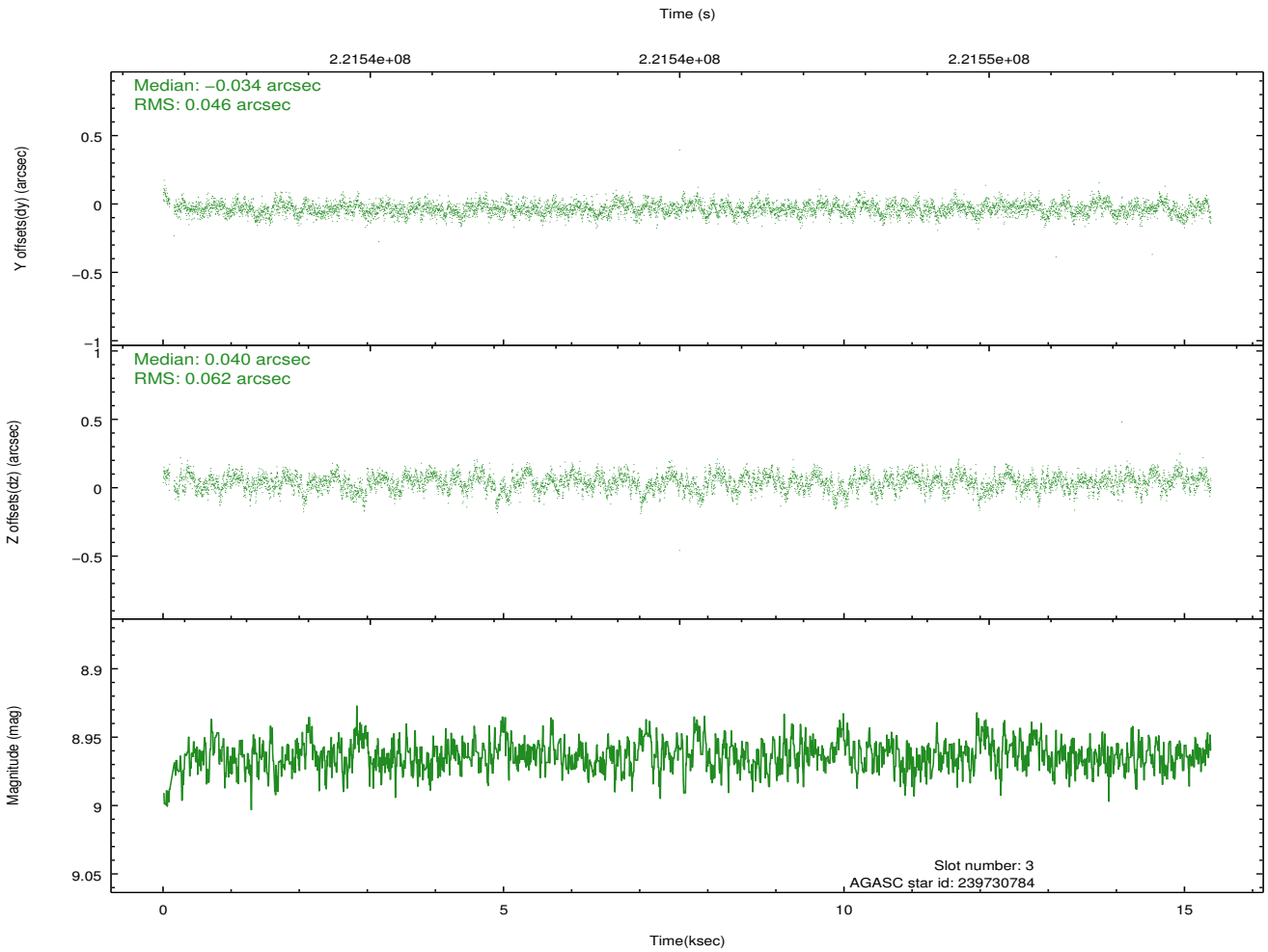
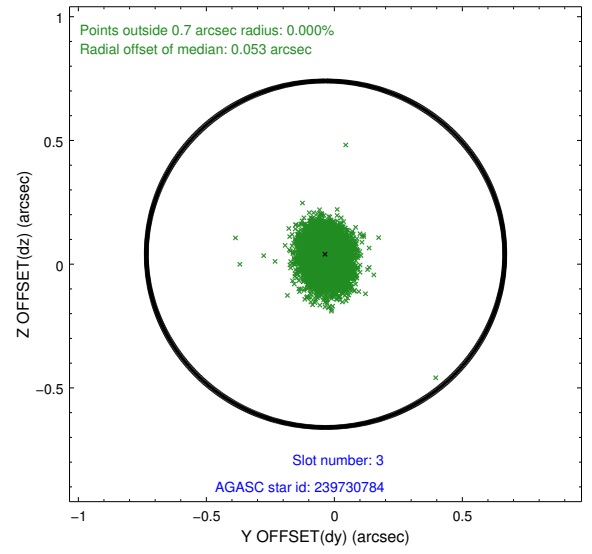
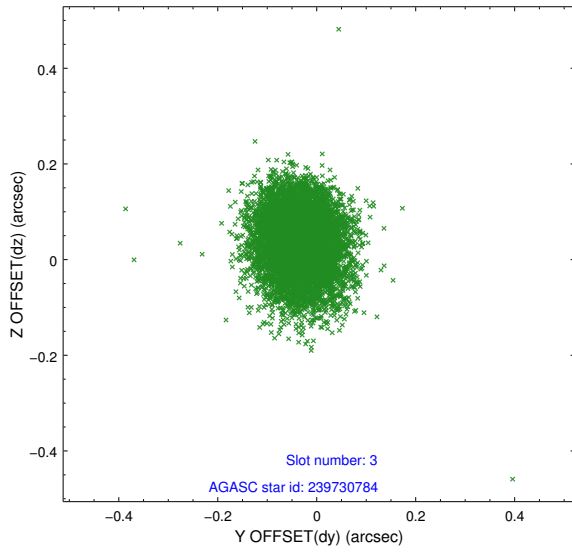


Slot Statistics

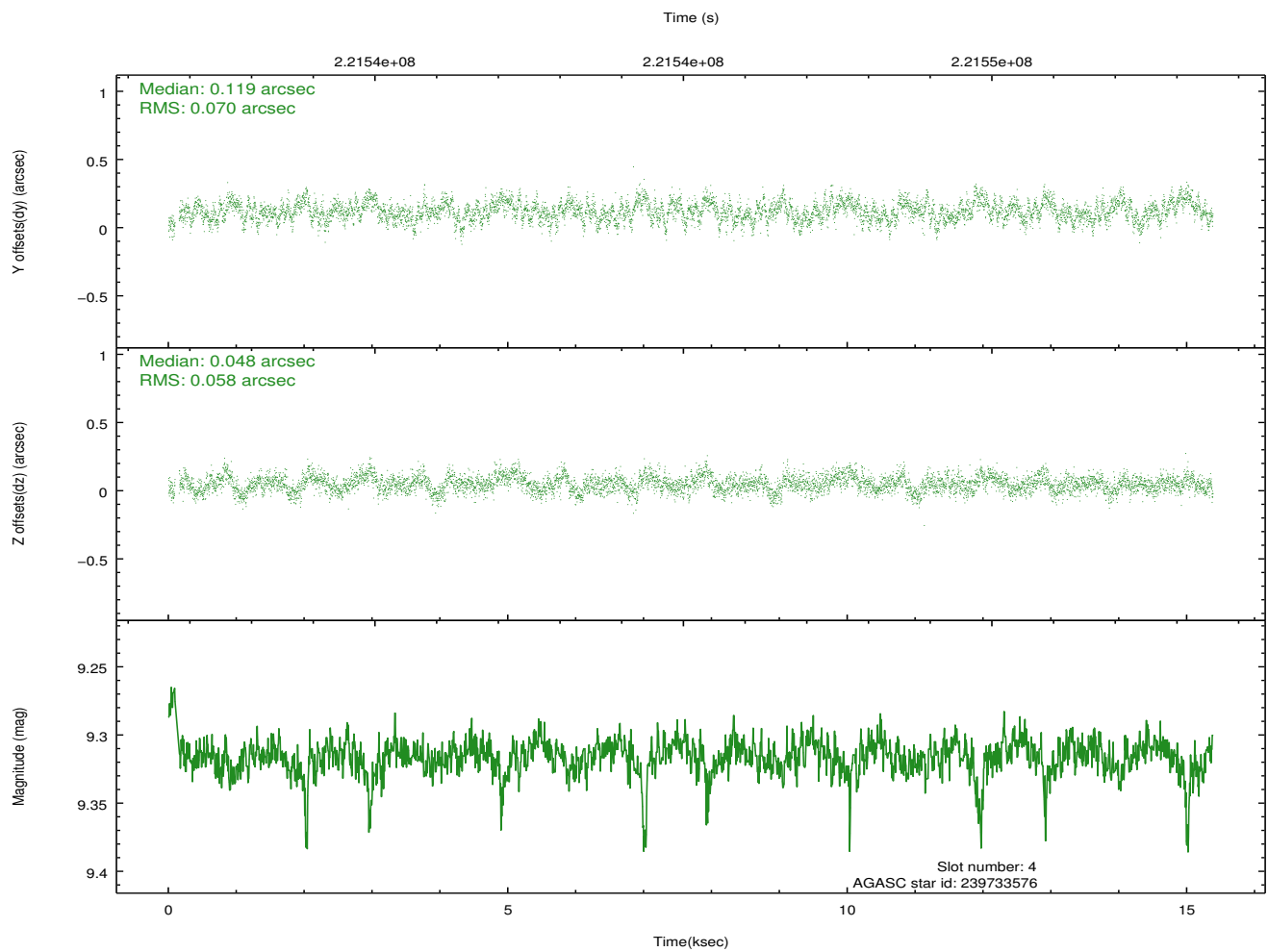
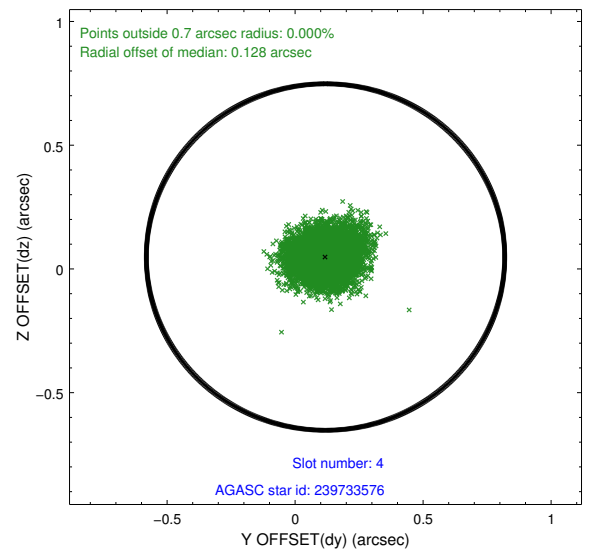
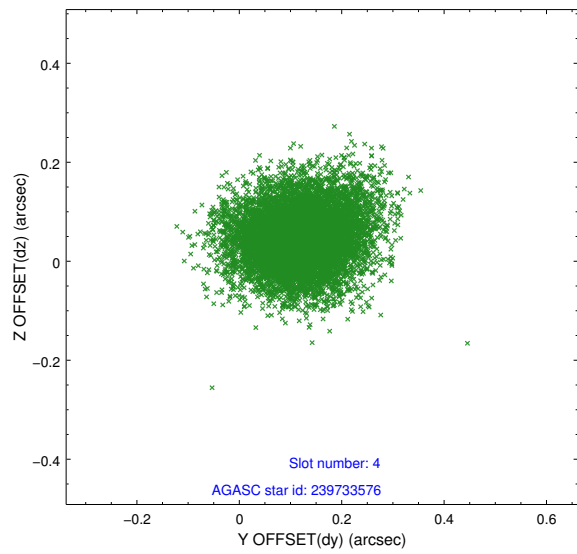
	status	id	mag	n_pts	med_dy	med_dz	dr1
	FID	ACIS-S-2	7.10	3737	-0.065	-0.038	0.012
	FID	ACIS-S-4	7.21	3737	0.103	0.041	0.007
	FID	ACIS-S-5	7.23	3736	-0.069	0.005	0.011
	GUIDE	239730784	8.96	7471	-0.034	0.040	0.081
	GUIDE	239733576	9.32	7471	0.119	0.048	0.097
	GUIDE	240255024	9.20	7466	-0.010	-0.111	0.091
	GUIDE	240263016	8.65	7474	-0.074	0.027	0.063
0.000	0.000	0.000	0.000000	0.000000	0.00	0.00	

2.4 Star Slots

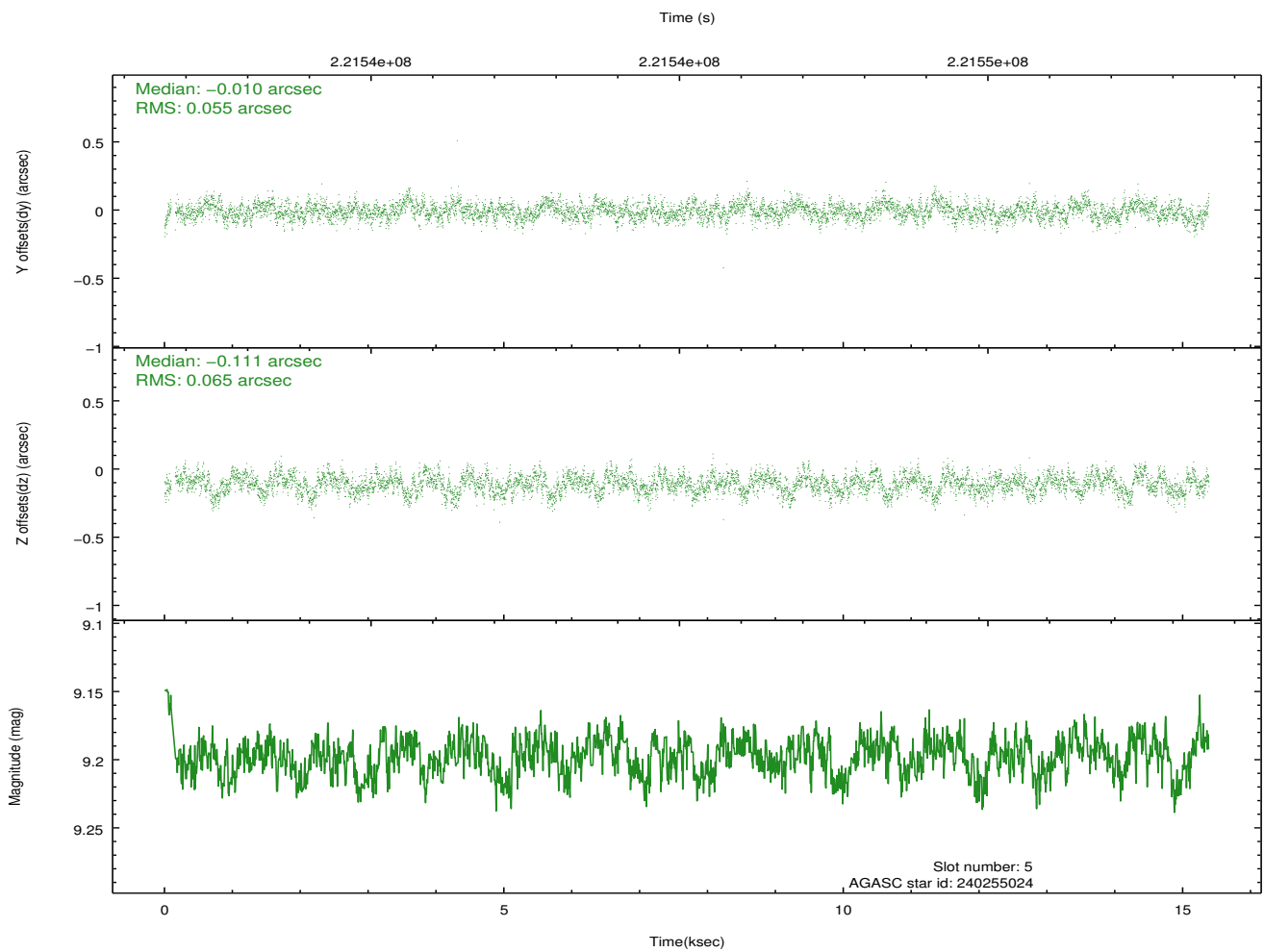
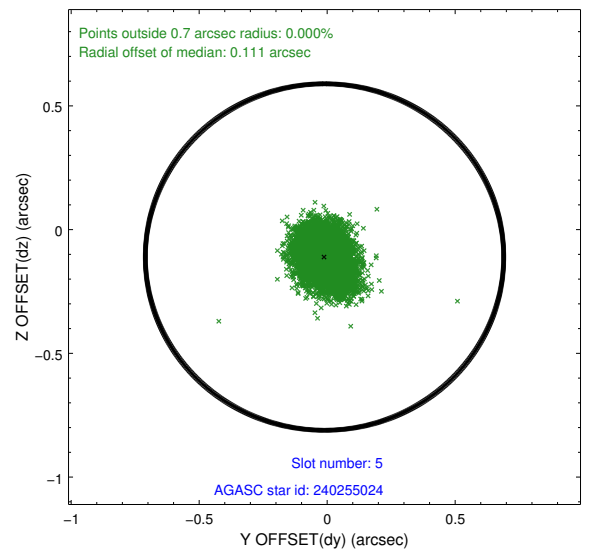
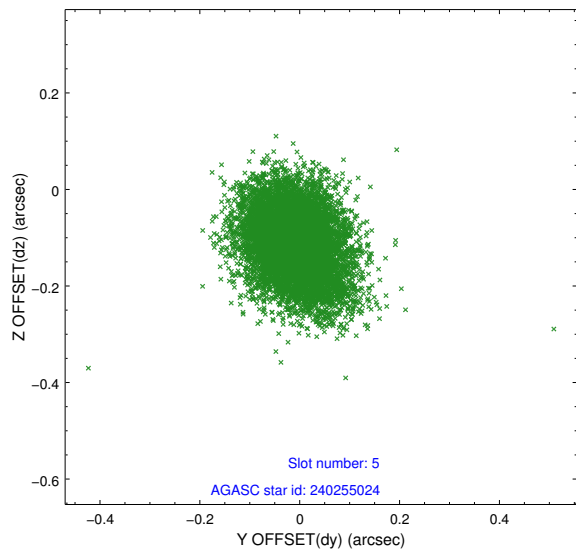
2.4.1 Slot 3



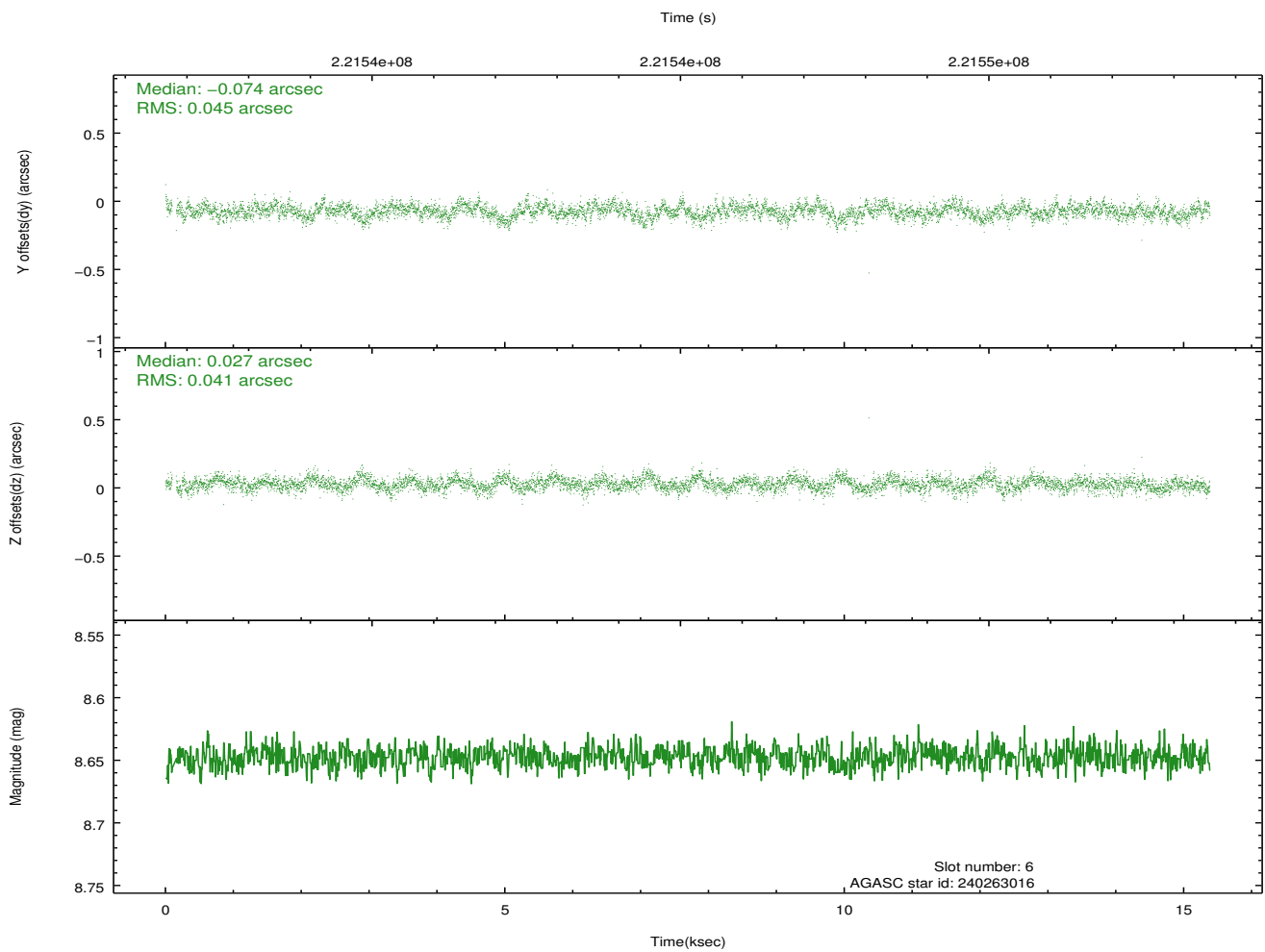
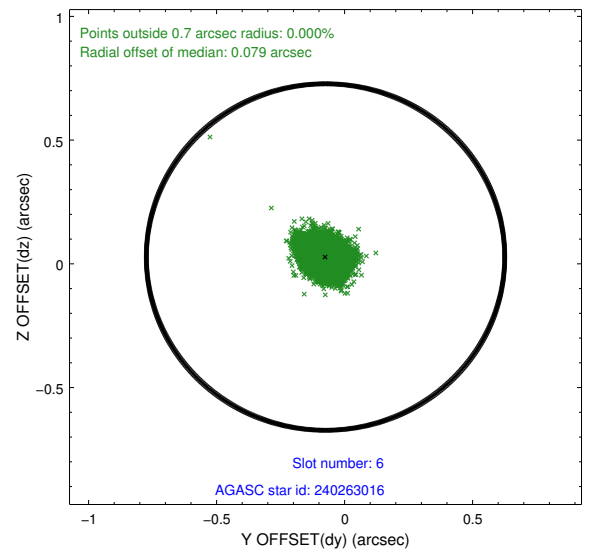
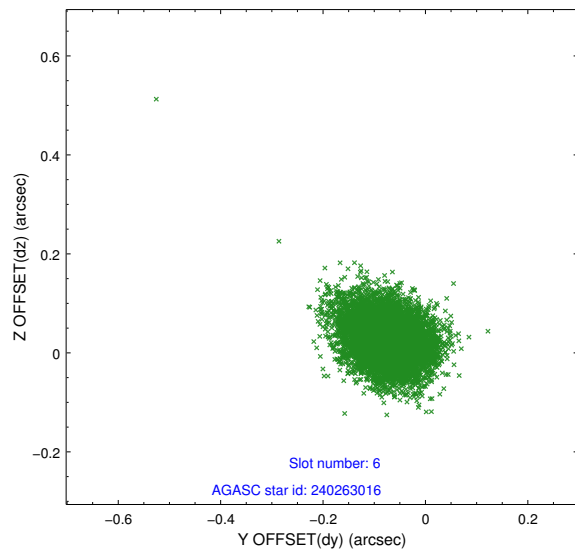
2.4.2 Slot 4



2.4.3 Slot 5

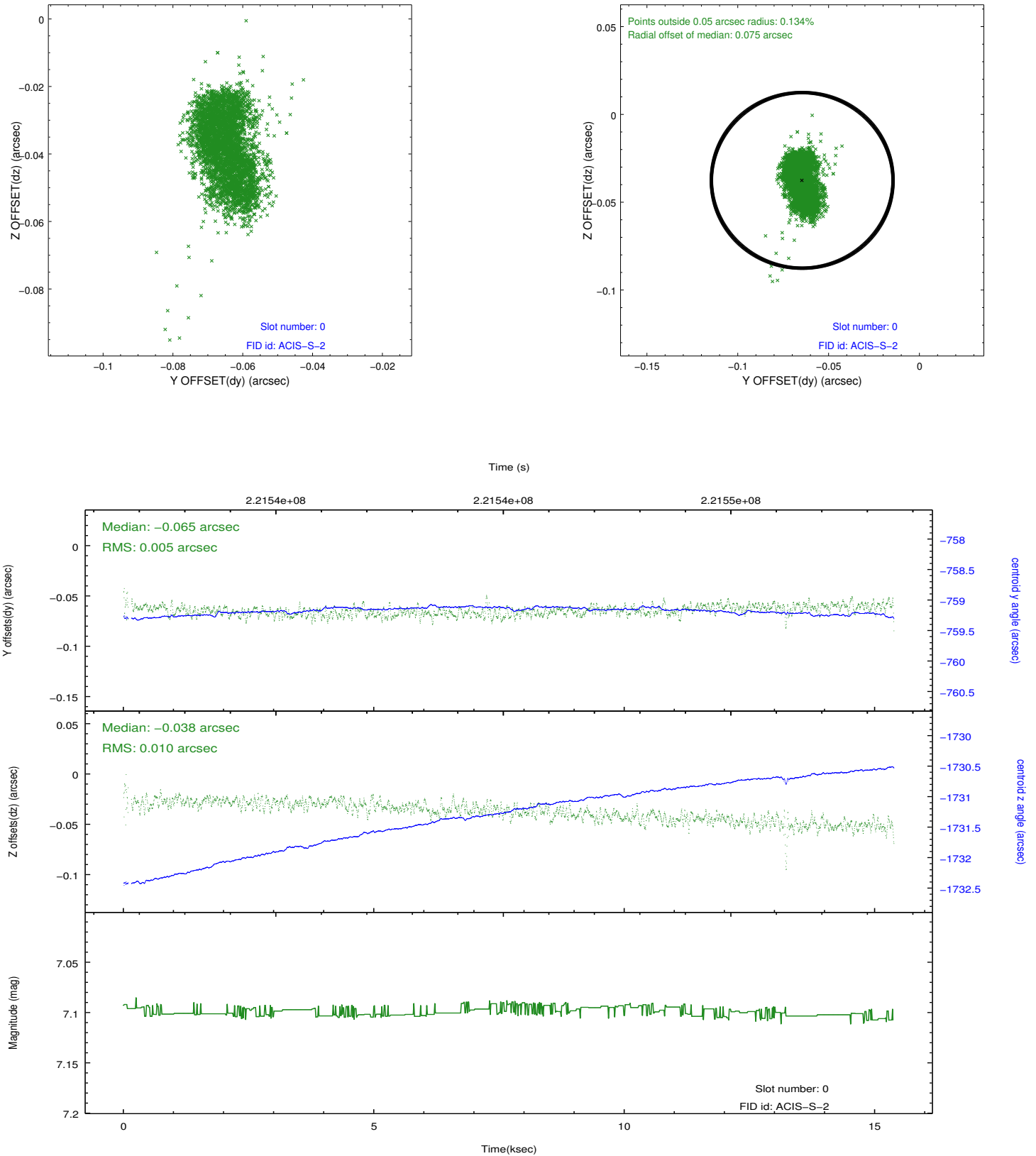


2.4.4 Slot 6

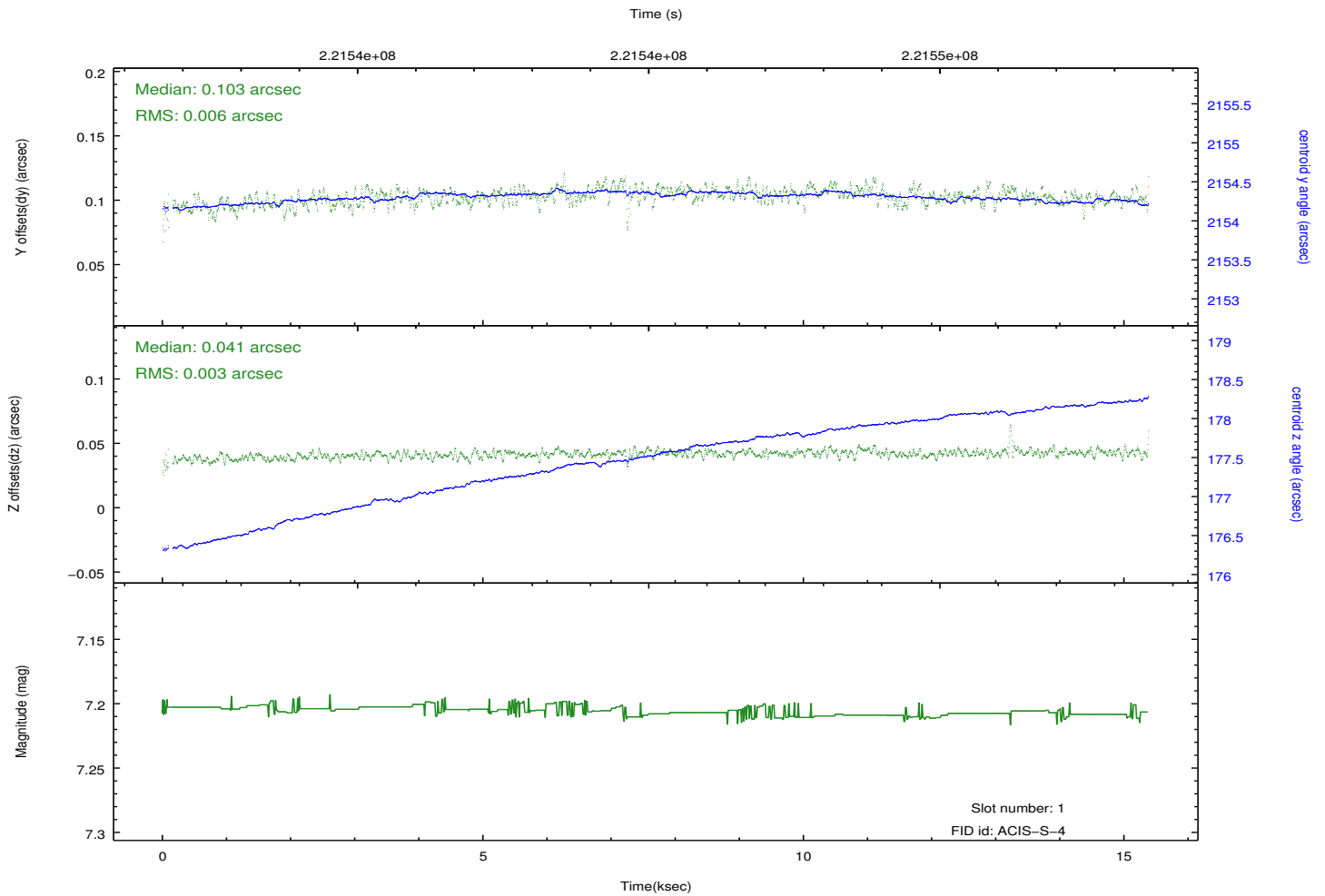
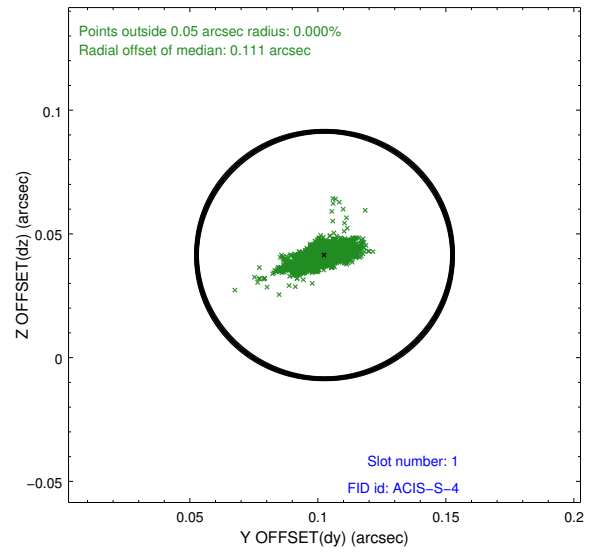
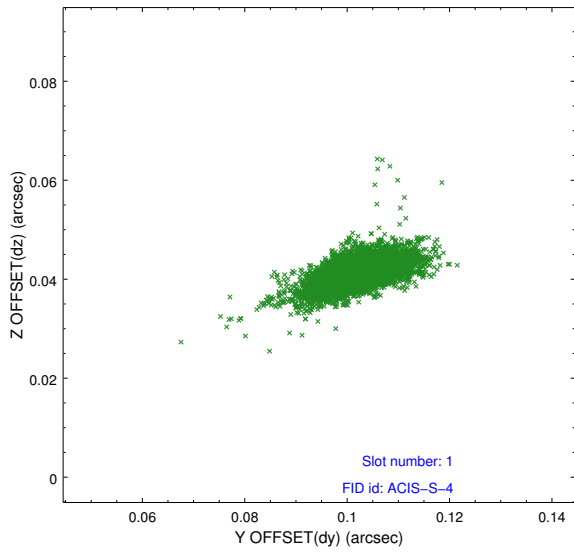


2.5 FID Slots

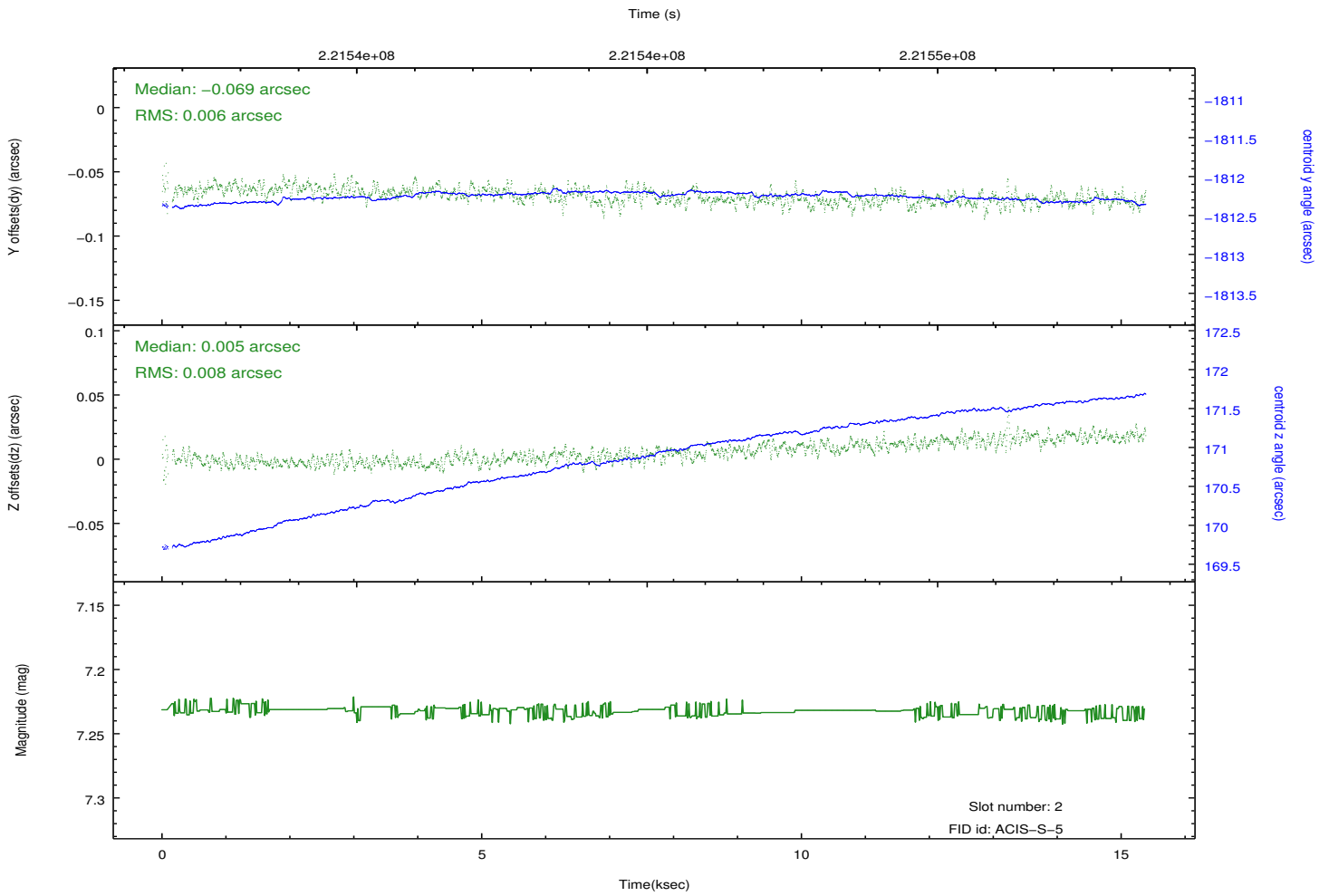
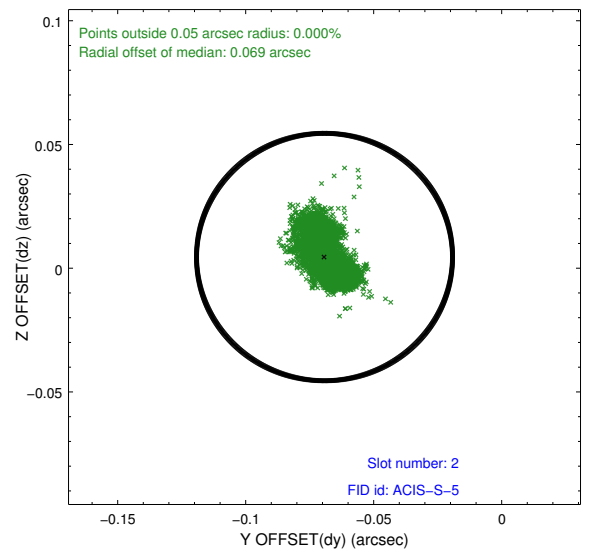
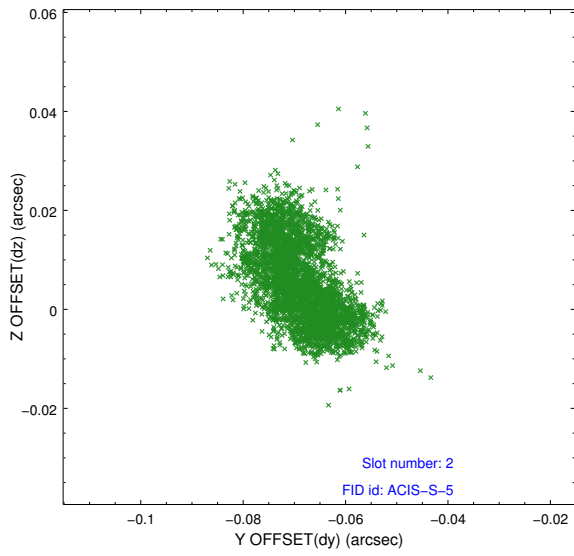
2.5.1 Slot 0



2.5.2 Slot 1



2.5.3 Slot 2



A Summary

A.1 Status

V&V Scientist	Jen Lauer
V&V Date (YYYY-MM-DD)	2013.01.28
V&V Edition	1
V&V Disposition and Status	OK
V&V Charge Time	15.227

A.2 Comments