

V&V Reference Report

L2 ASCDS Version : 10.9.1

Observation 5887 - L2 Version 5
Chandra X-Ray Center

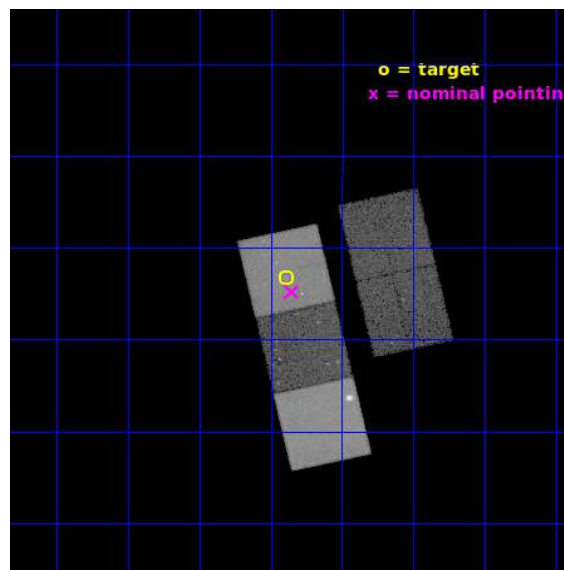
L2 Processing Date : Oct 7 2020

Contents

1	Front	2
2	OBI	3
2.1	OBI	3
2.1.1	Images	3
2.1.2	Bias	3
2.1.3	Parameters	4
2.1.4	Events	4
2.2	Compared Parameters	5
2.3	Aspect	6
2.4	Star Slots	9
2.4.1	Slot 3	9
2.4.2	Slot 4	10
2.4.3	Slot 5	11
2.4.4	Slot 6	12
2.4.5	Slot 7	13
2.5	FID Slots	14
2.5.1	Slot 0	14
2.5.2	Slot 1	15
2.5.3	Slot 2	16
A	Summary	17
A.1	Status	17
A.2	Comments	17

1 Front

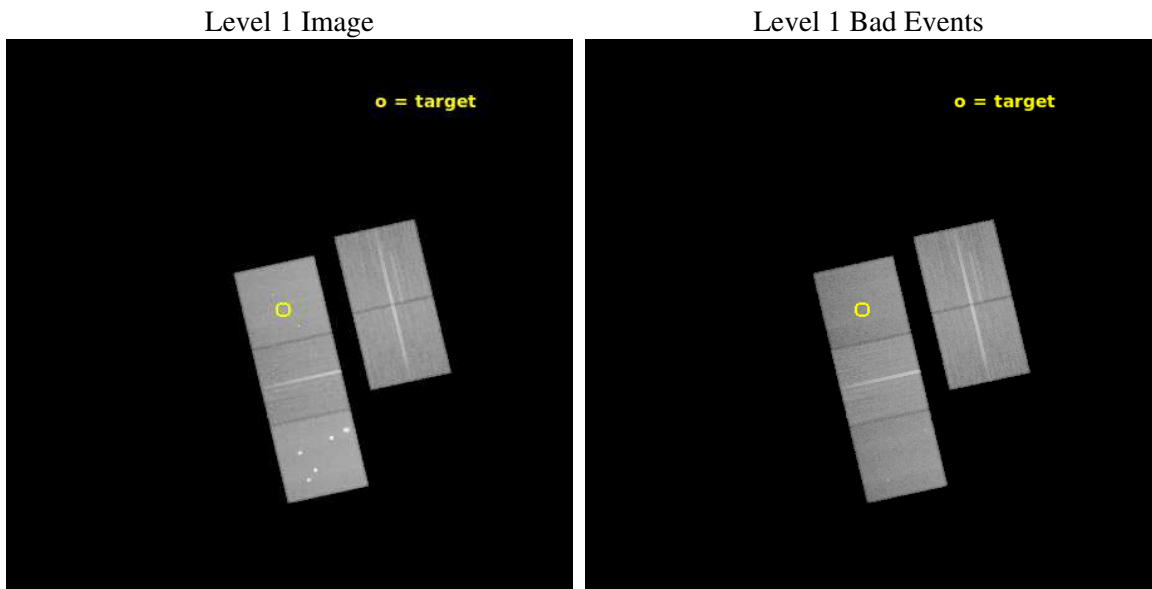
seq_num	900387	Sequence number
obs_id	5887	Observation id
title	X-ray Emission from Optically-Selected, High-Redshift Galaxy Clusters from the RCS Survey	Proposal title
observer	Gordon Garmire	Principal investigator
object	RCS1107.3-0523	Source name
dtcycle	0	
cycle	P	events from which exps? Prim/Second/Both
ra_targ	166.848167	Observer's specified target RA [deg]
dec_targ	-5.387639	Observer's specified target Dec [deg]
ra_nom	166.83781786781	Nominal RA [deg]
dec_nom	-5.4129703394285	Nominal Dec [deg]
roll_nom	257.15771847498	Nominal Roll [deg]
revision	5	Processing version of data
ontime	45182.499913096	Sum of GTIs [s]
livetime	44592.157288859	Livetime [s]
ontime2	45179.358922839	Sum of GTIs [s]
ontime3	45176.217922628	Sum of GTIs [s]
ontime5	45182.499913096	Sum of GTIs [s]
ontime6	45182.499913096	Sum of GTIs [s]
ontime7	45182.499913096	Sum of GTIs [s]
l2events	403621	Number of level 2 events



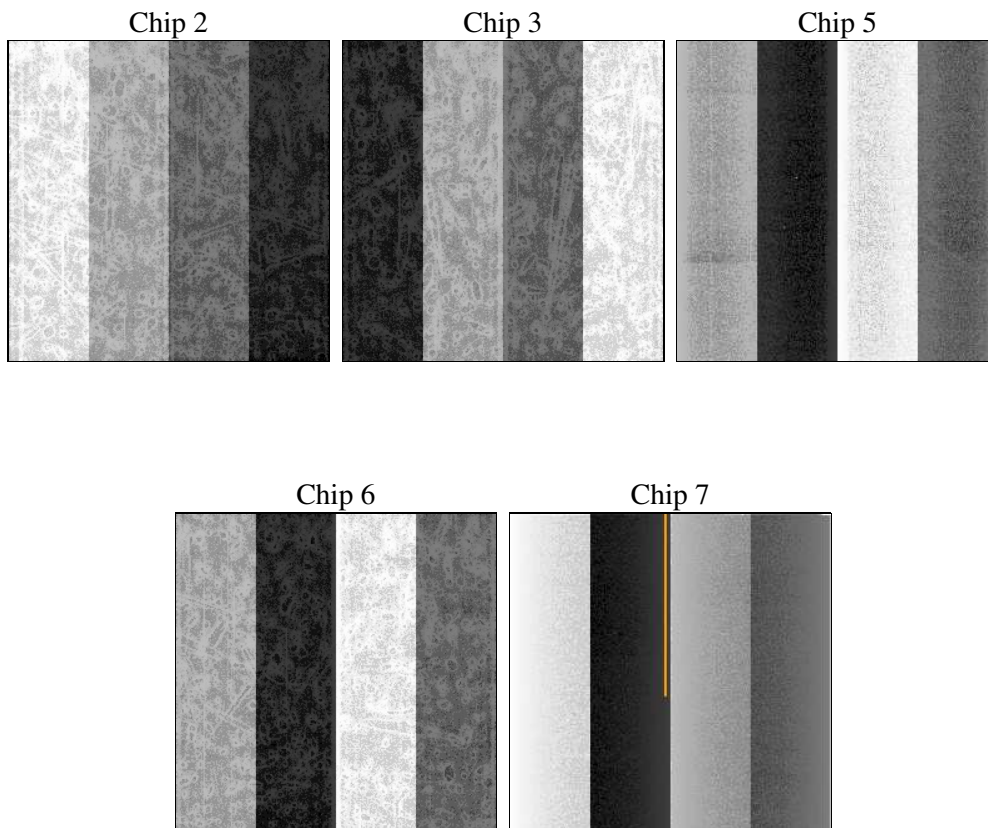
2 OBI

2.1 OBI

2.1.1 Images



2.1.2 Bias



2.1.3 Parameters

obi_num	0	Obi number	sched_exp_time	45000.000000	[s] Scheduled observation exposure time
ascdsver	10.9.1	Processing system revision	ontime	45182.499913096	Sum of GTIs [s]
caldbver	4.9.2	 	ontime2	45179.358922839	Sum of GTIs [s]
date	2020-10-07T18:51:21	Date and time of file creation	ontime3	45176.217922628	Sum of GTIs [s]
revision	5	Processing version of data	ontime5	45182.499913096	Sum of GTIs [s]
			ontime6	45182.499913096	Sum of GTIs [s]
			ontime7	45182.499913096	Sum of GTIs [s]
			l1events	1620997	Number of level 1 events

2.1.4 Events

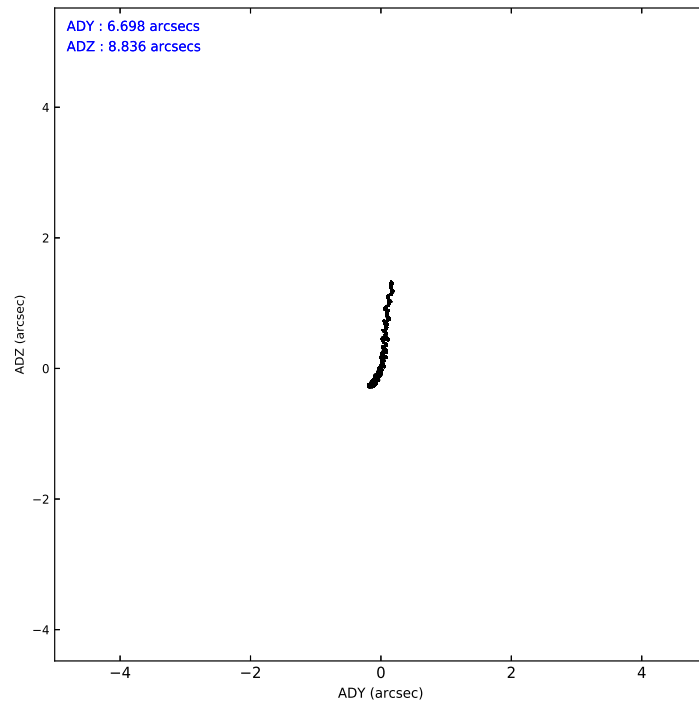
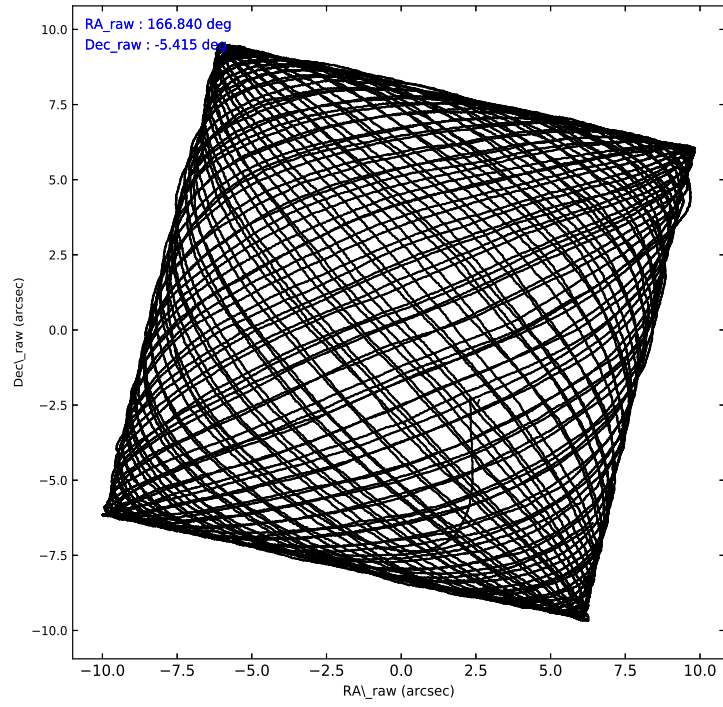
	ccd 2	ccd 3	ccd 5	ccd 6	ccd 7
level 1 events	290716	285765	428198	291964	324354
rejected events	263272	259997	200578	261667	177069
rejected %	90%	90%	46%	89%	54%

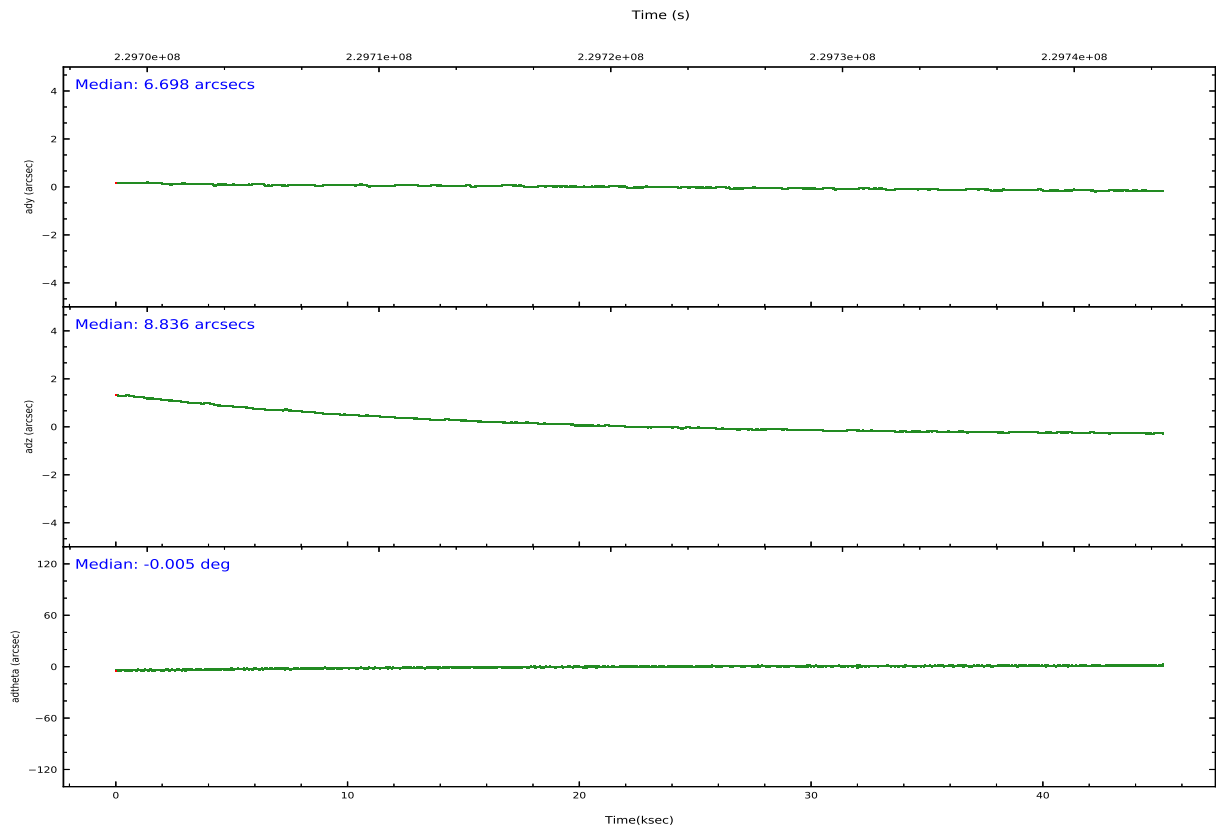
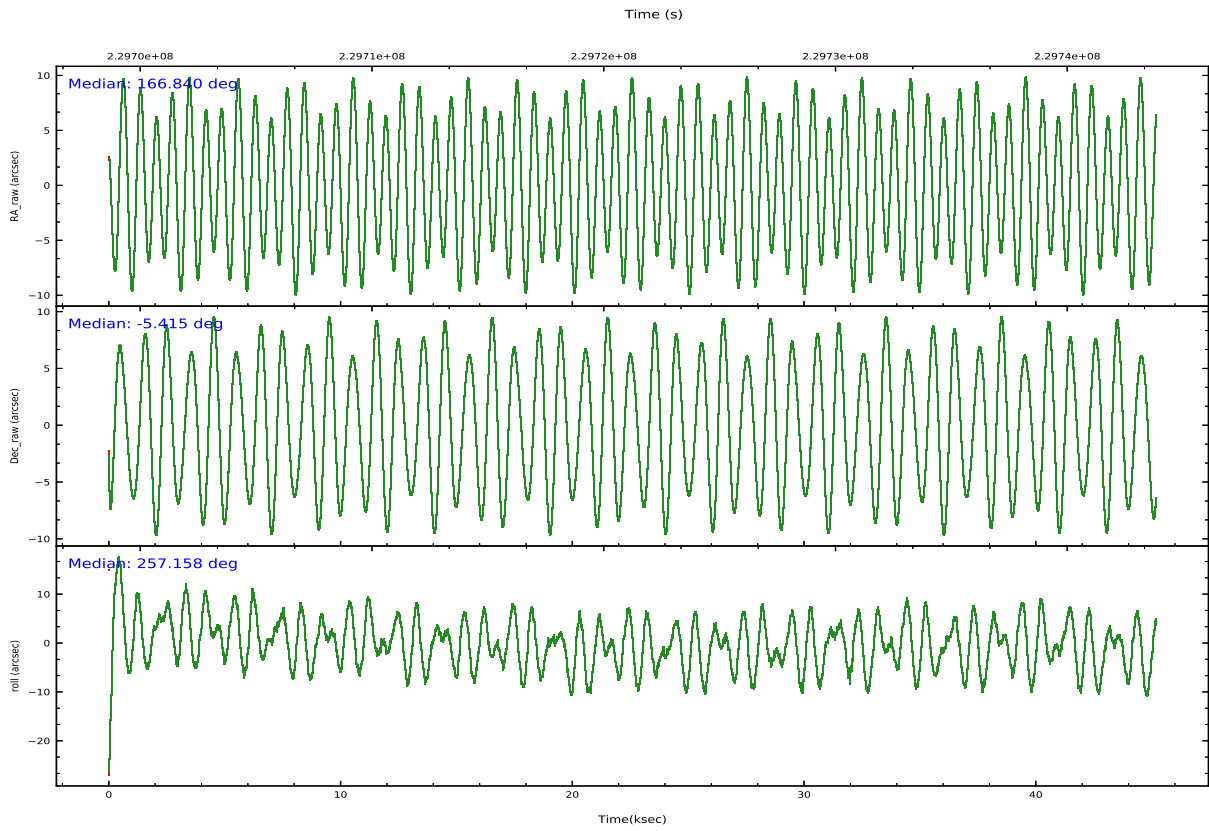
	ccd 2	ccd 3	ccd 5	ccd 6	ccd 7
grade 0 events	9733	8874	47667	10743	13965
	3%	3%	11%	3%	4%
grade 1 events	131	126	649	140	288
	0%	0%	0%	0%	0%
grade 2 events	6538	5648	60351	6444	29862
	2%	1%	14%	2%	9%
grade 3 events	3060	3095	9436	3348	13845
	1%	1%	2%	1%	4%
grade 4 events	3156	3108	9108	3439	13900
	1%	1%	2%	1%	4%
grade 5 events	9392	11285	31859	11714	34008
	3%	3%	7%	4%	10%
grade 6 events	5088	5202	102397	6502	76560
	1%	1%	23%	2%	23%
grade 7 events	253618	248427	166731	249634	141926
	87%	86%	38%	85%	43%

2.2 Compared Parameters

Parameter	Planned	Actual	Parameter	Planned	Actual
Instrument	ACIS	ACIS	Obspar version number	8	8
Detector	ACIS-23567	ACIS-23567	Obspar file type	PREDICTED	ACTUAL
Grating	NONE	NONE	Obspar update status	NONE	UPDATED
Data mode	VFAINT	VFAINT	Number of optional ACIS chips dropped	0	0
Observation mode	POINTING	POINTING	On-chip summing requested	N	N
[deg] Pointing RA	166.831554	166.83781786781	Subarray requested	NONE	NONE
[deg] Pointing Dec	-5.389638	-5.4129703394285	Alternating exposures requested	N	N
[deg] Pointing Roll	256.998436	257.15771847498	[s] Primary exposure time	0.000000	3.1
[mm] SIM focus pos	-0.684267	-0.6828225247311905			
[mm] SIM defocus	0	0.001444936568705701			
[mm] SIM translation stage pos	-190.132523	-190.1400660498719			
[mm] SIM translation stage offset	0	0.00754346686406393			
[s] Observation start time (MET)	229698835.184000	229697698.62157			
Observation start date	2005-04-12T13:12:51	2005-04-12T12:54:58			
[s] Observation end time (MET)	229743835.184000	229745340.11123			
Observation end date	2005-04-13T01:42:51	2005-04-13T02:09:00			
Read mode	TIMED	TIMED			

2.3 Aspect





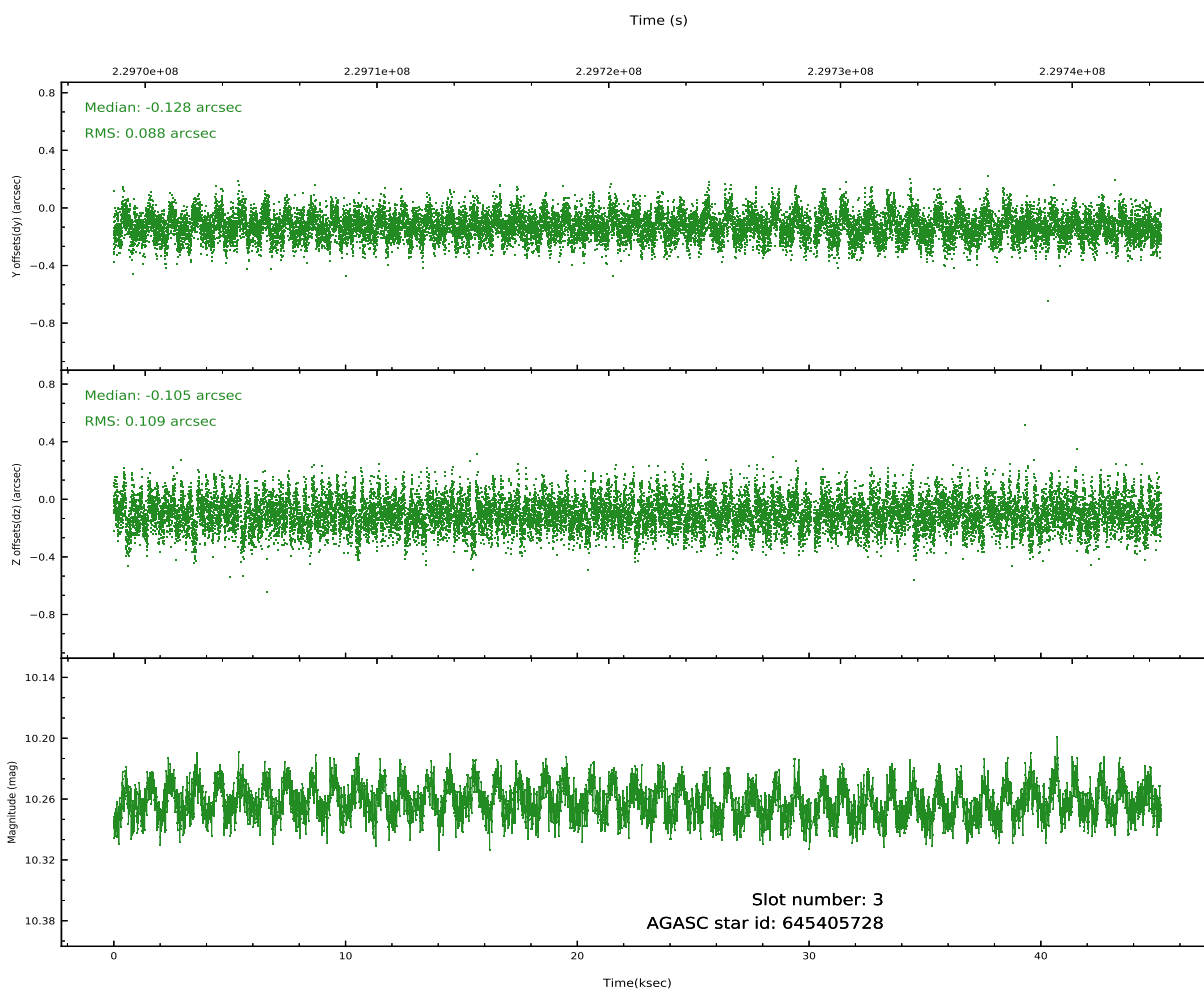
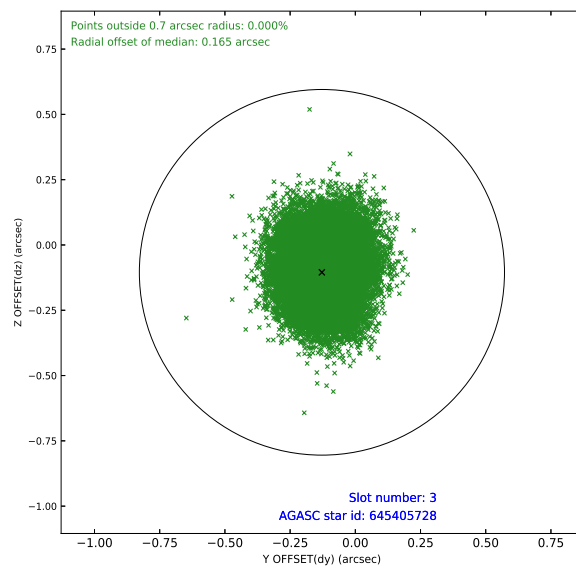
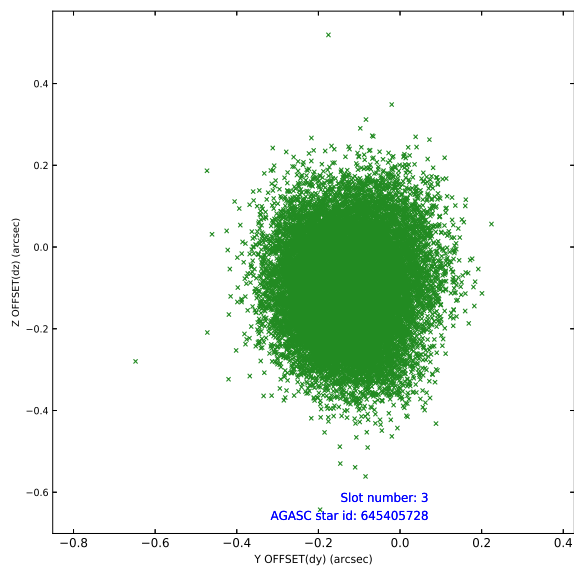
Slot Statistics

slot	status	used	id	mag	n_pts	frac_pts	med_dy	med_dz	dr1	dr2	ra	dec	mean_y	mean_x
0	FID		ACIS-S-2	7.10	11023	1.000	-0.071	-0.085	0.010	0.026	0.000000	0.000000	-759.47	-1730
1	FID		ACIS-S-4	7.21	11023	1.000	0.148	0.057	0.006	0.010	0.000000	0.000000	2154.00	178
2	FID		ACIS-S-5	7.23	11020	1.000	-0.107	0.038	0.010	0.026	0.000000	0.000000	-1812.38	171
3	GUIDE	used	645405728	10.26	21936	1.000	-0.128	-0.105	0.149	0.244	166.379932	-4.876775	-1433.31	-1993
4	GUIDE	used	645408520	10.21	22010	1.000	-0.209	-0.232	0.299	0.462	166.485150	-4.846117	-1626.31	-1650
5	GUIDE	used	645796976	9.88	22022	1.000	0.266	0.224	0.121	0.206	167.205232	-6.141738	2338.74	1913
6	GUIDE	used	645798808	9.62	22024	1.000	-0.066	-0.037	0.128	0.206	166.261457	-5.333958	266.05	-2035
7	GUIDE	used	645801536	10.44	22011	1.000	0.134	0.068	0.197	0.382	166.481888	-5.828422	1821.99	-864

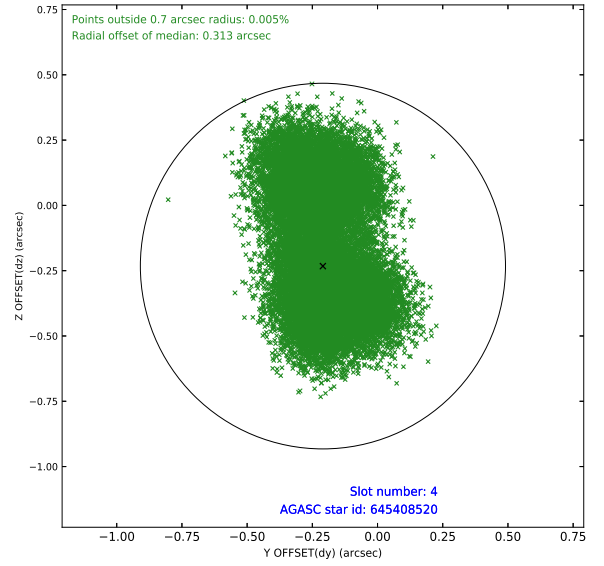
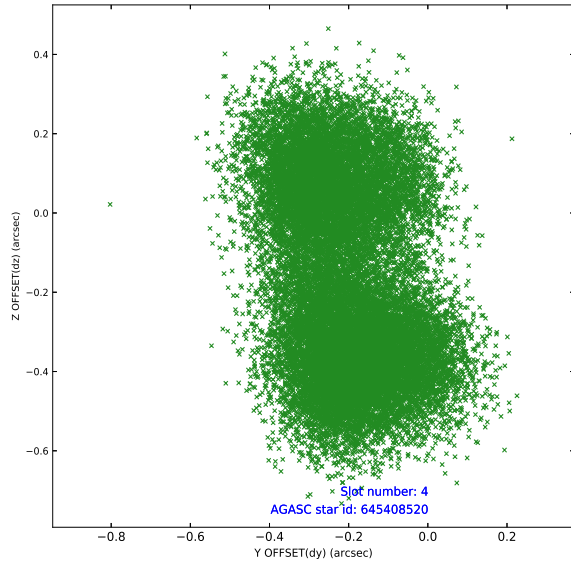
∞

2.4 Star Slots

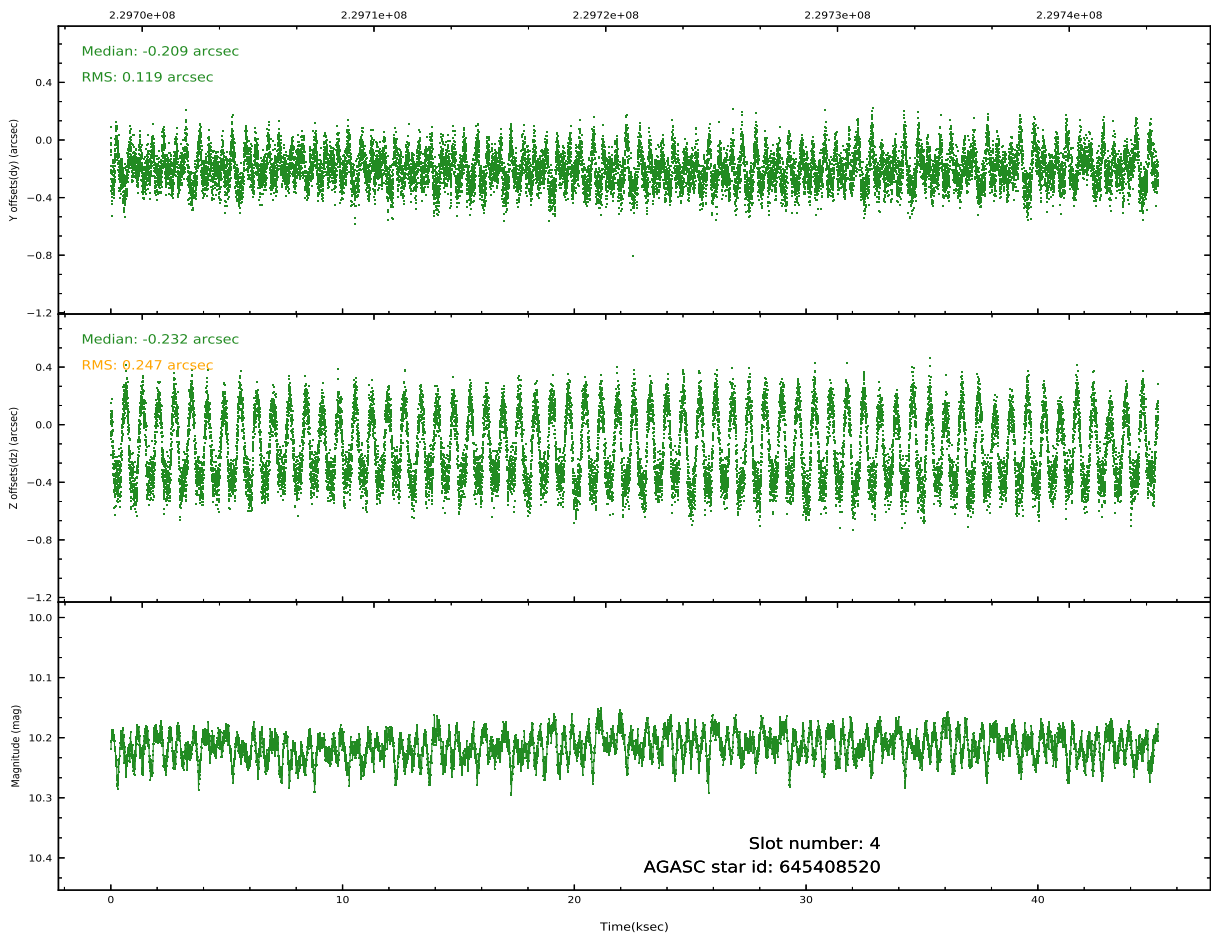
2.4.1 Slot 3



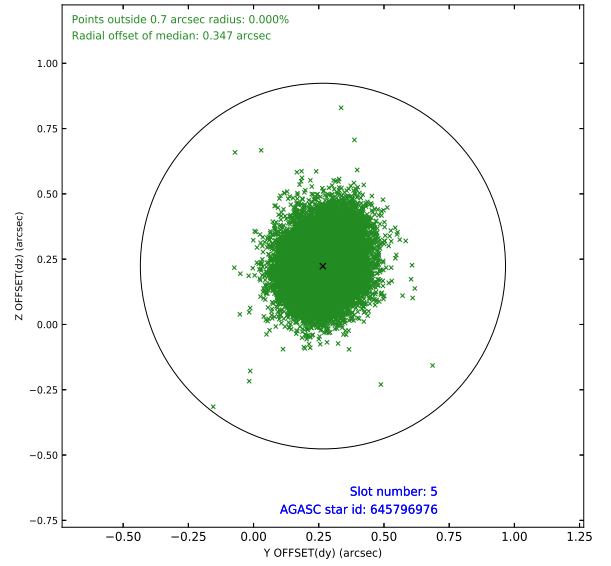
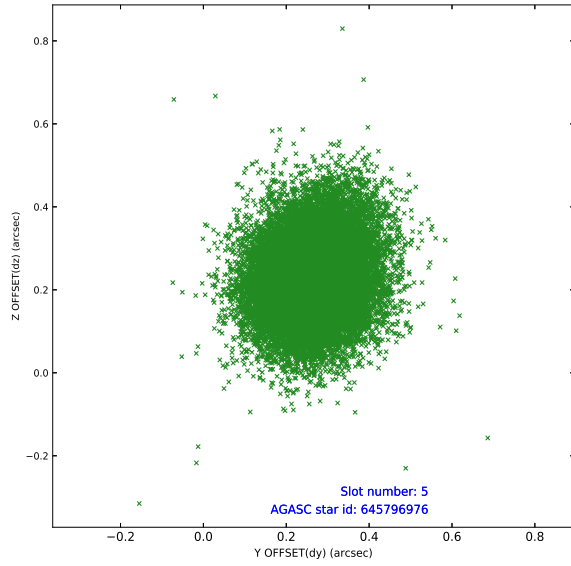
2.4.2 Slot 4



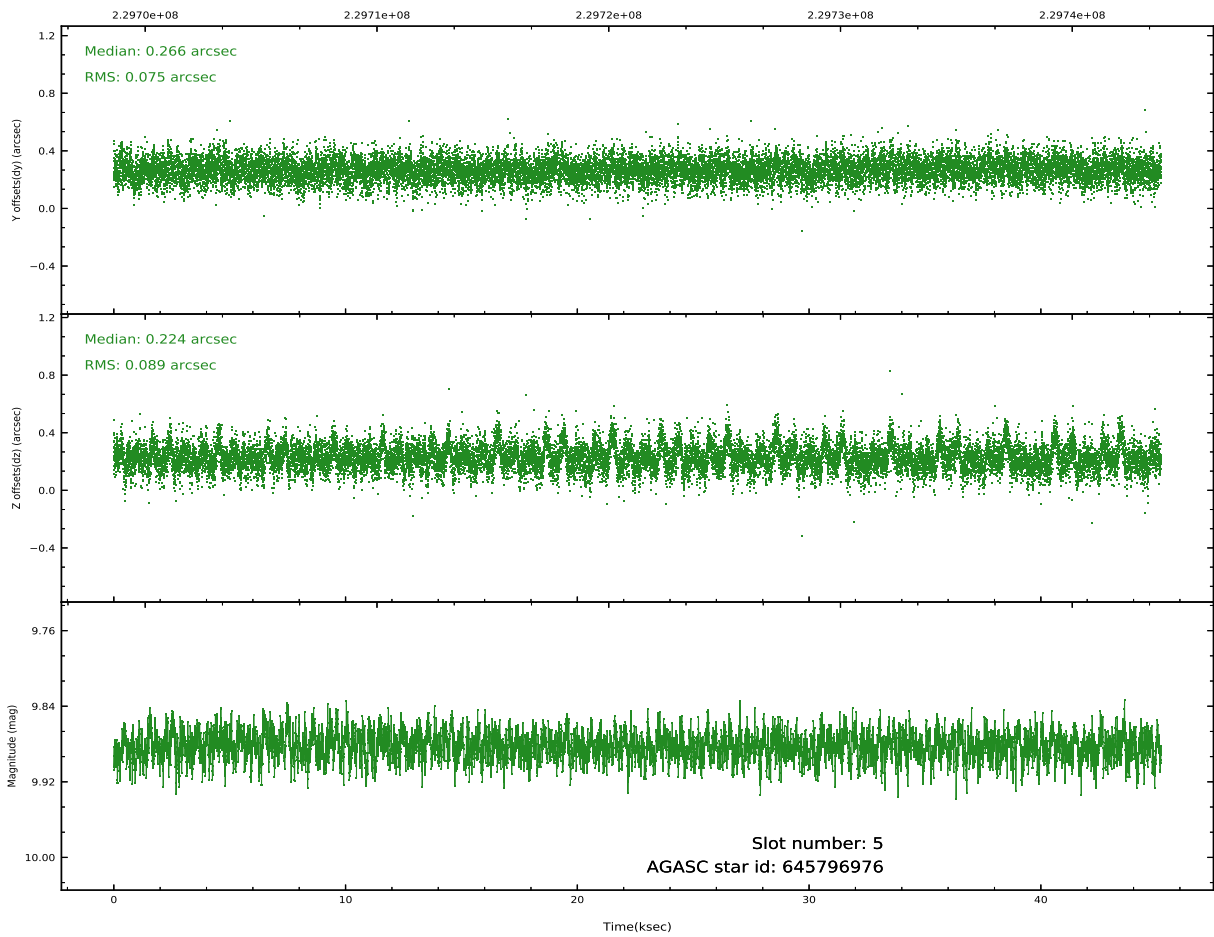
Time (s)



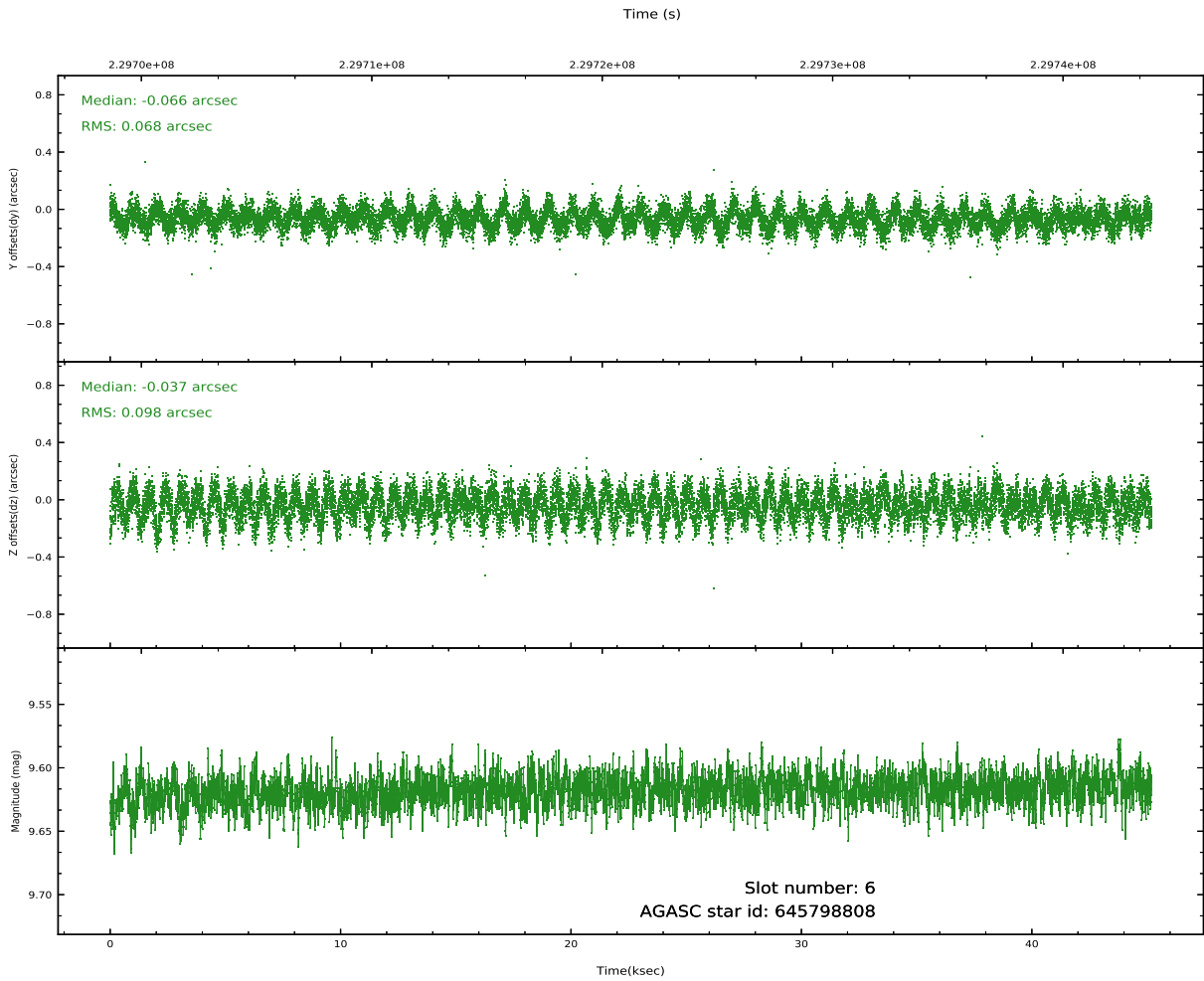
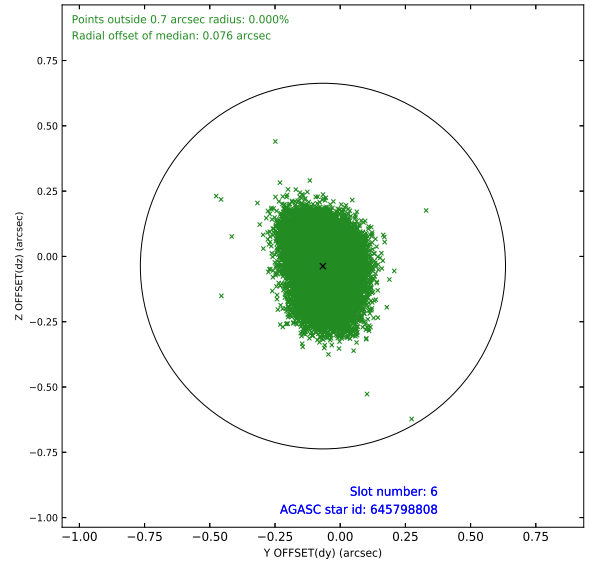
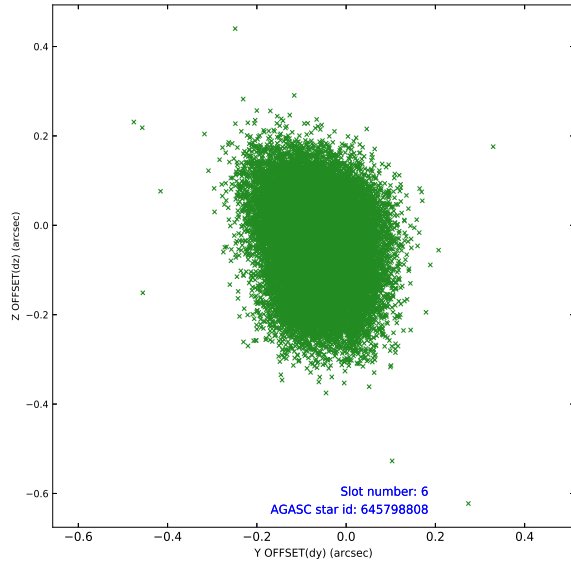
2.4.3 Slot 5



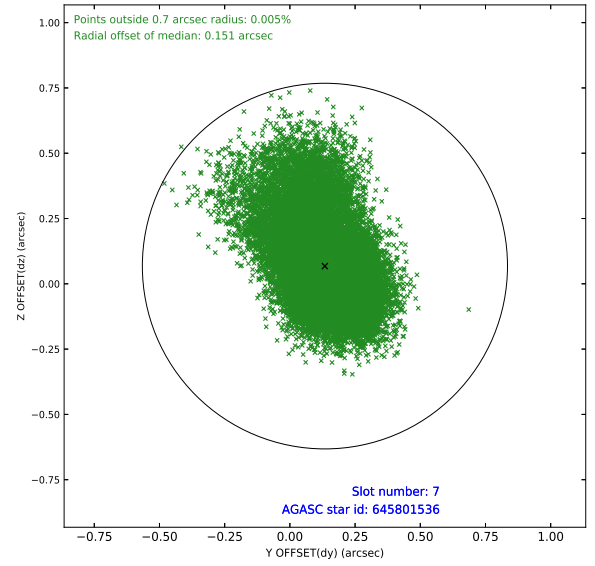
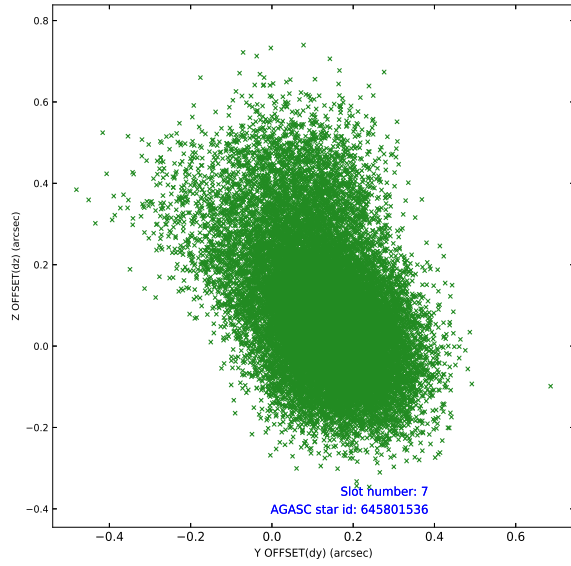
Time (s)



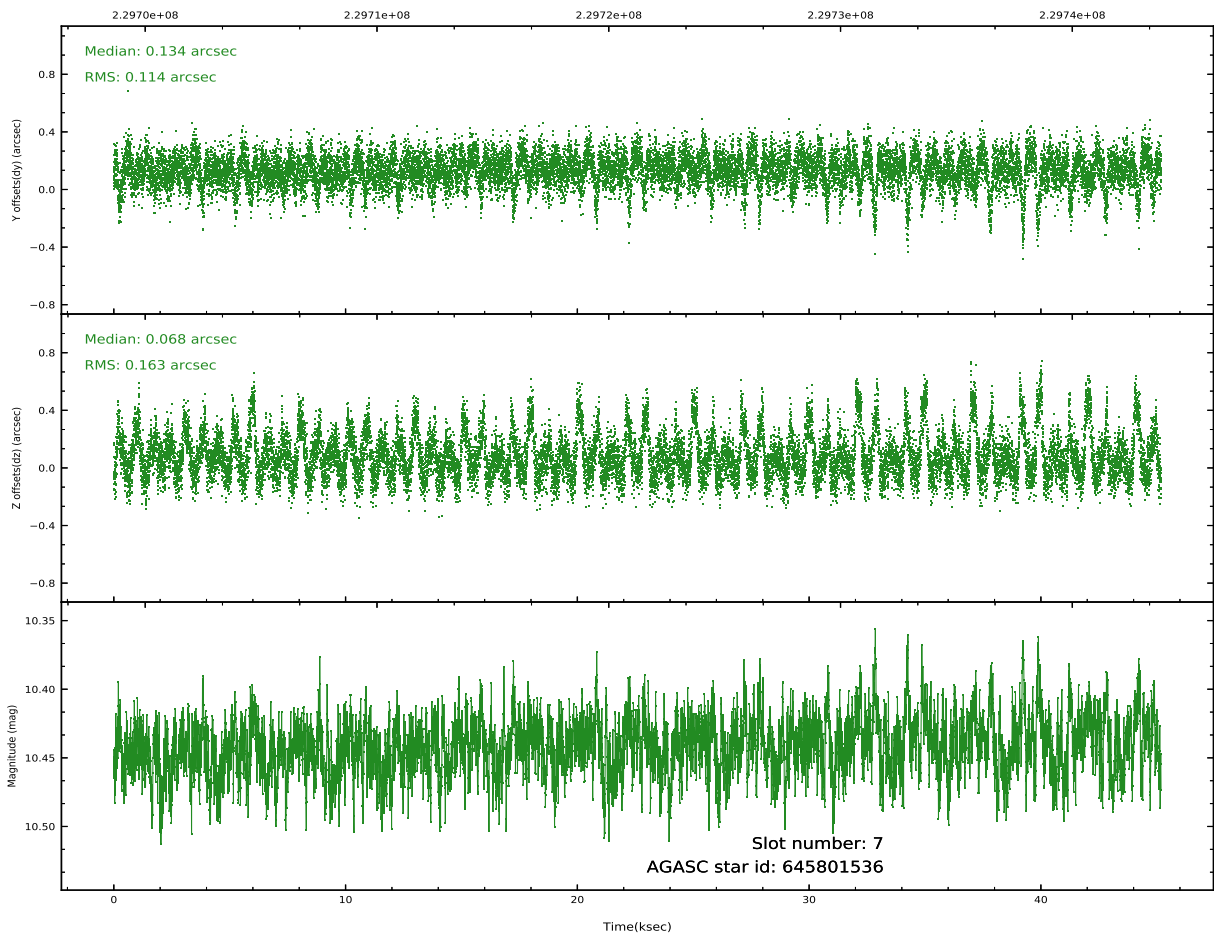
2.4.4 Slot 6



2.4.5 Slot 7

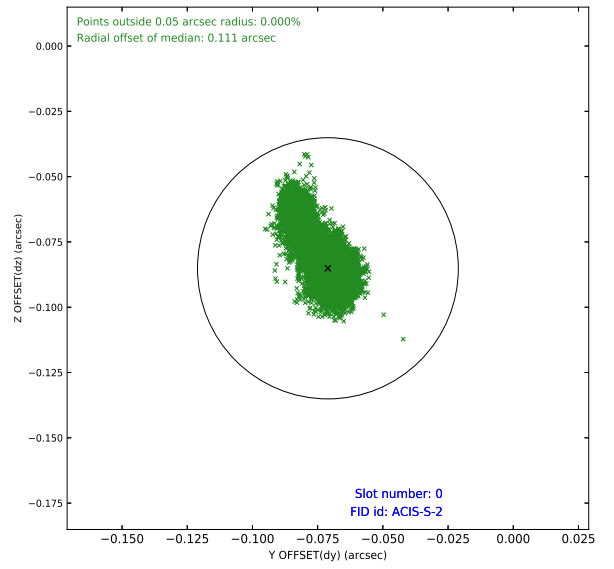
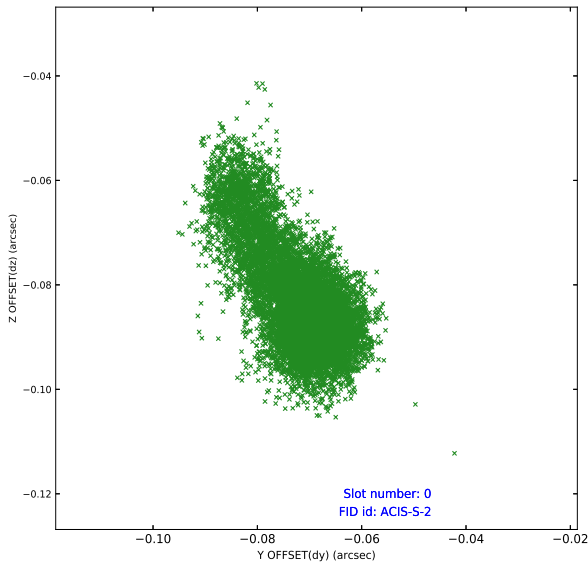


Time (s)

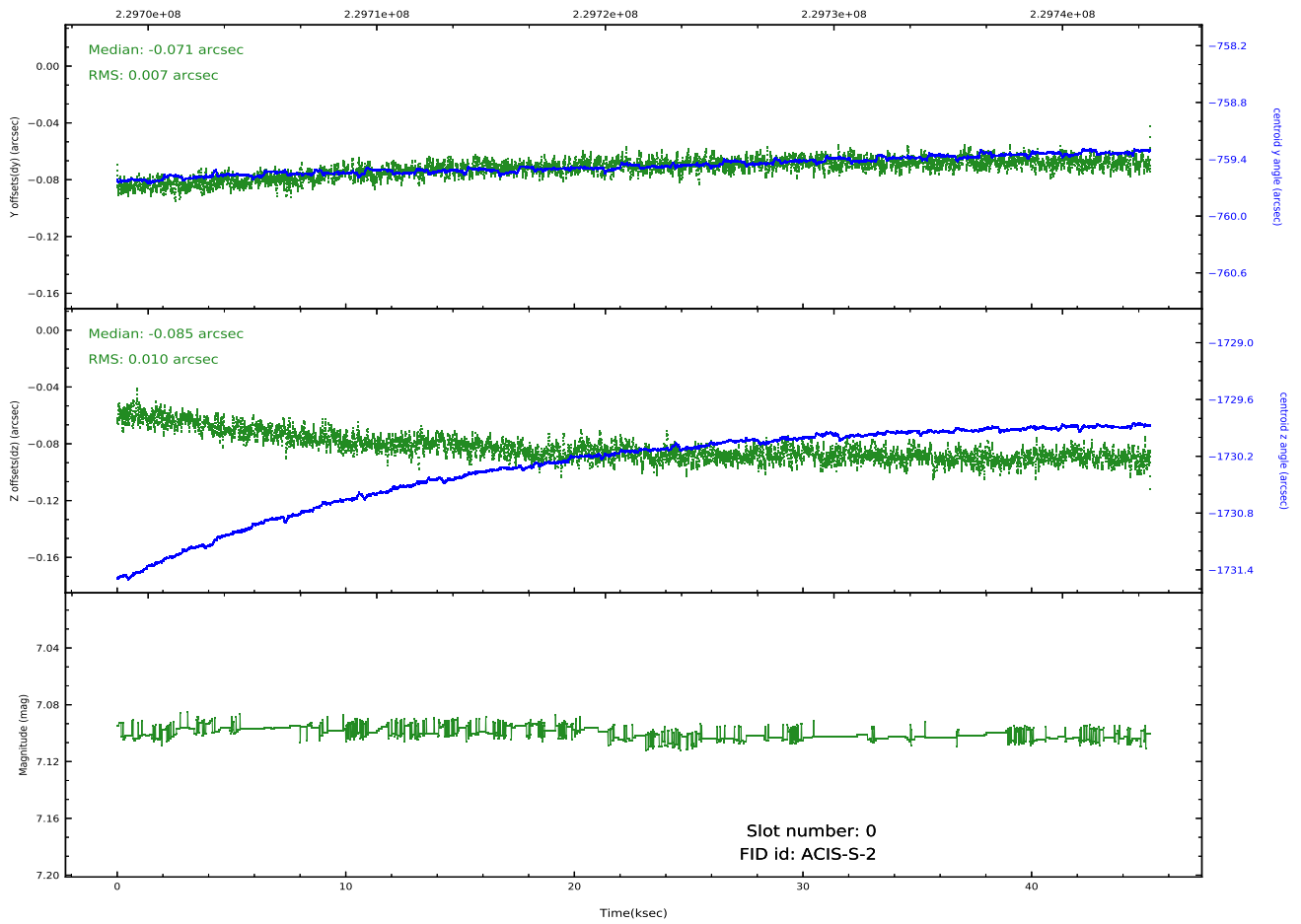


2.5 FID Slots

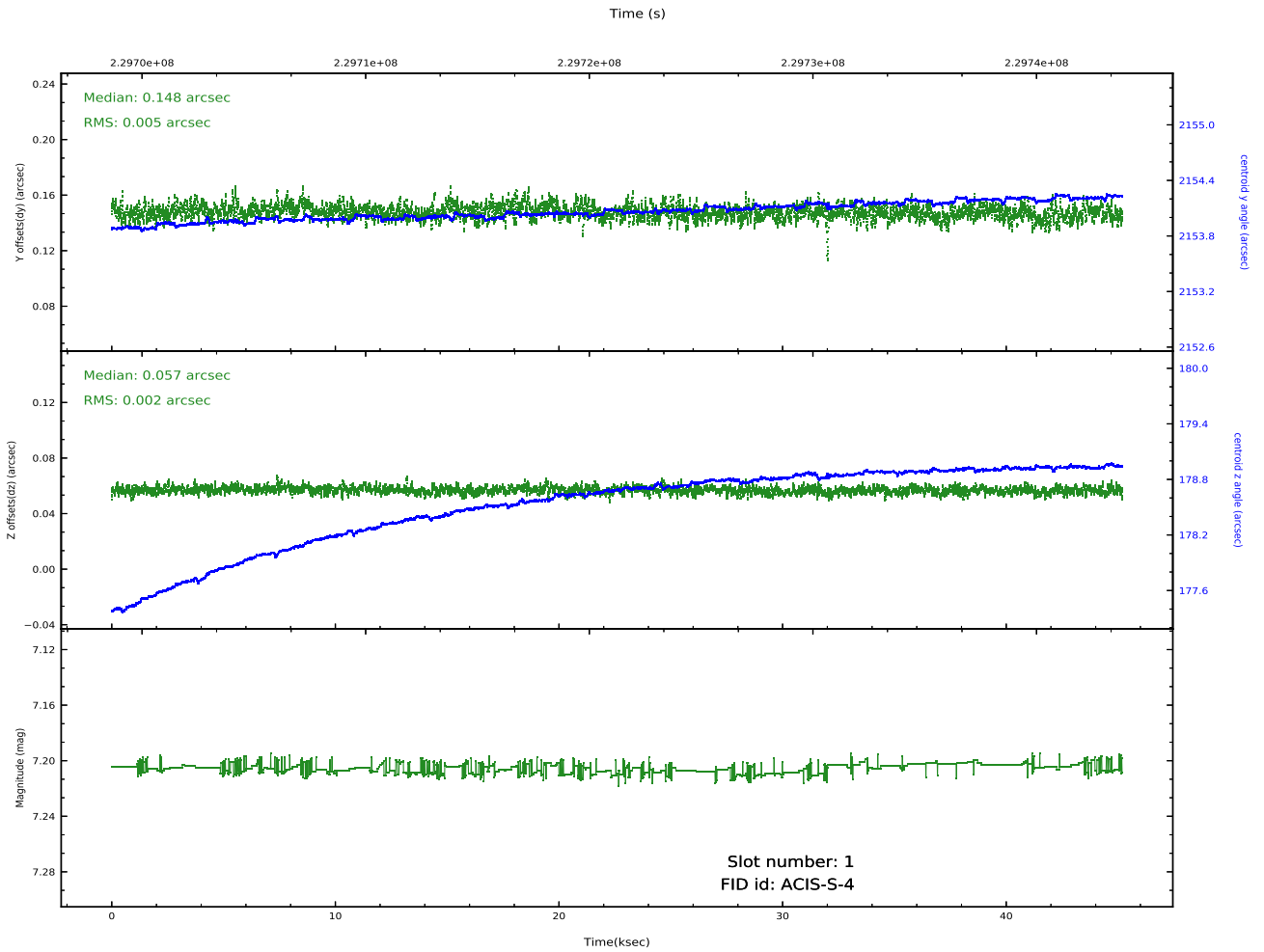
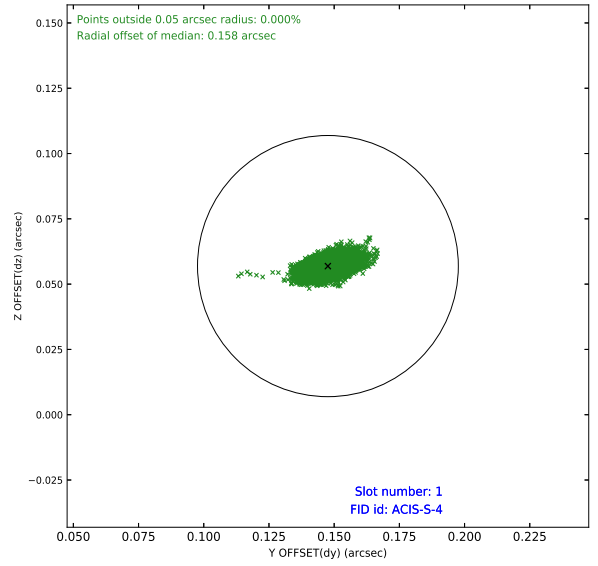
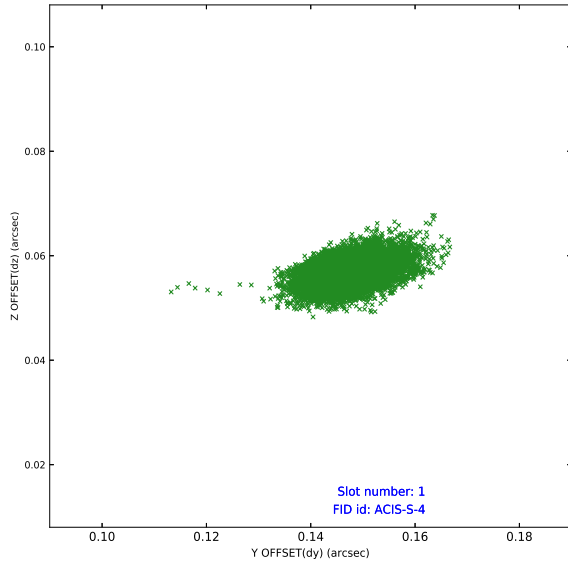
2.5.1 Slot 0



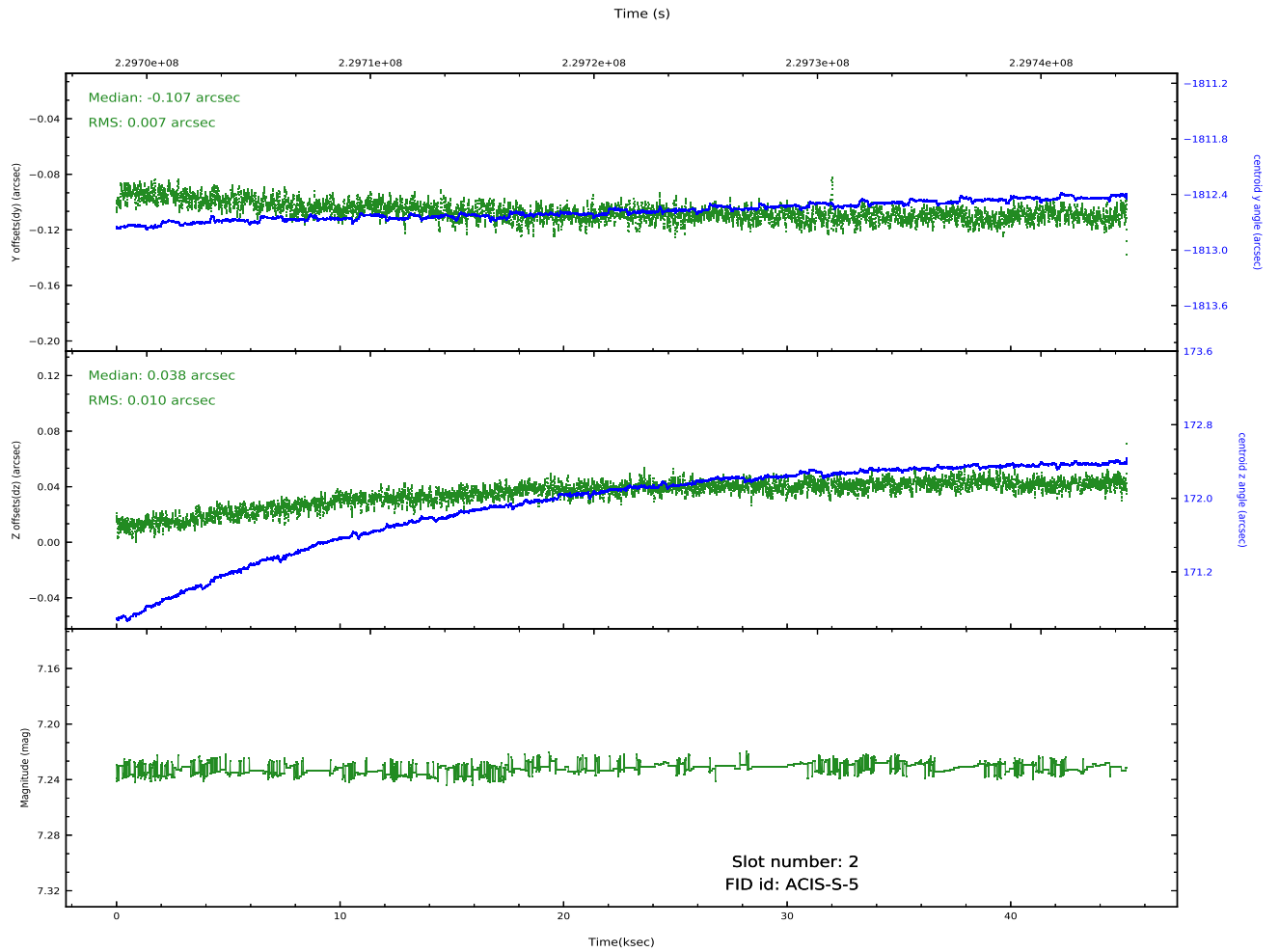
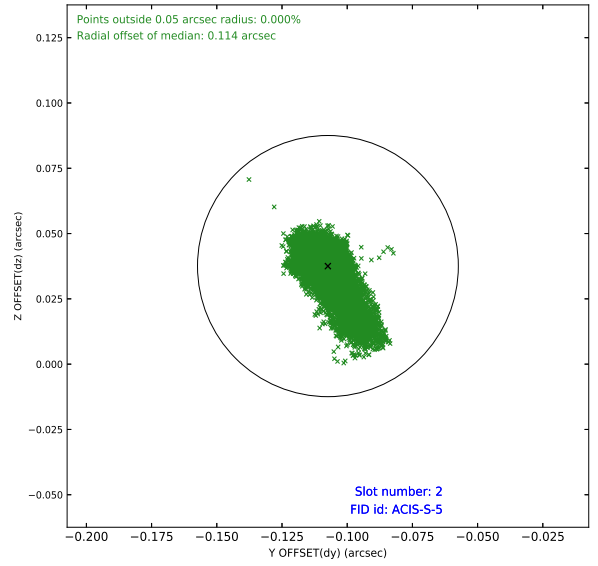
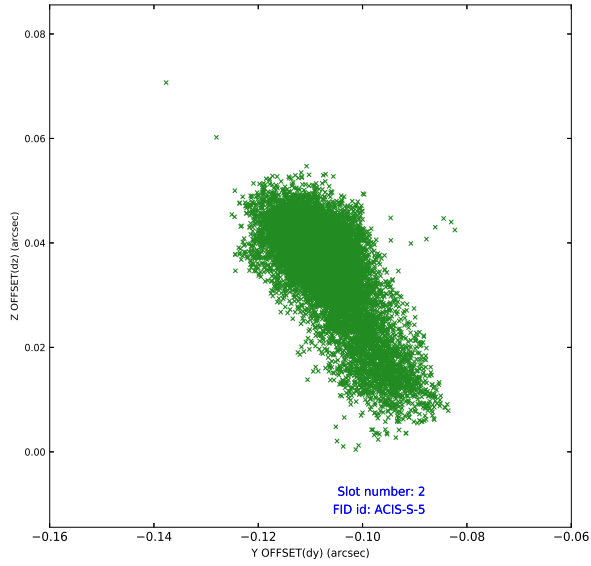
Time (s)



2.5.2 Slot 1



2.5.3 Slot 2



A Summary

A.1 Status

V&V Scientist	Jen Lauer
V&V Date (YYYY-MM-DD)	2020.10.08
V&V Edition	1
V&V Disposition and Status	OK
V&V Charge Time	45.18249

A.2 Comments