

V&V Reference Report

L2 ASCDS Version : 8.5.1

Observation 5957 - L2 Version 3
Chandra X-Ray Center

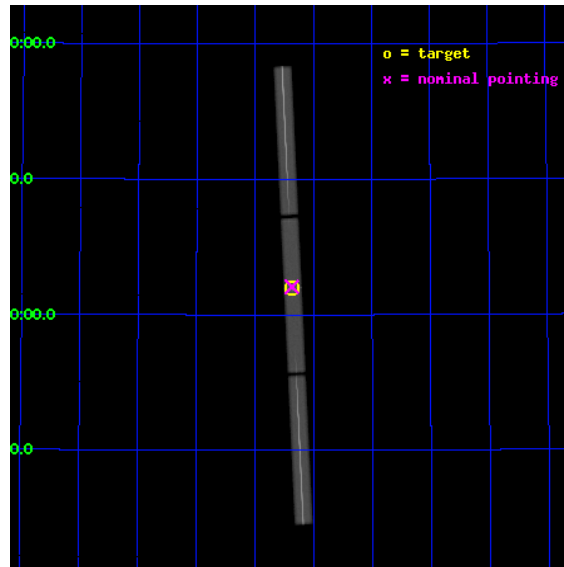
L2 Processing Date : Dec 17 2012

Contents

1	Front	2
2	OBI	3
2.1	OBI	3
2.1.1	Images	3
2.1.2	Parameters	4
2.1.3	Events	4
2.2	Compared Parameters	5
2.3	Aspect	6
2.4	Star Slots	9
2.4.1	Slot 3	9
2.4.2	Slot 4	10
2.4.3	Slot 5	11
2.4.4	Slot 6	12
2.4.5	Slot 7	13
2.5	FID Slots	14
2.5.1	Slot 0	14
2.5.2	Slot 1	15
2.5.3	Slot 2	16
3	Gratings	17
3.1	LETG Arm	17
A	Summary	19
A.1	Status	19
A.2	Comments	19

1 Front

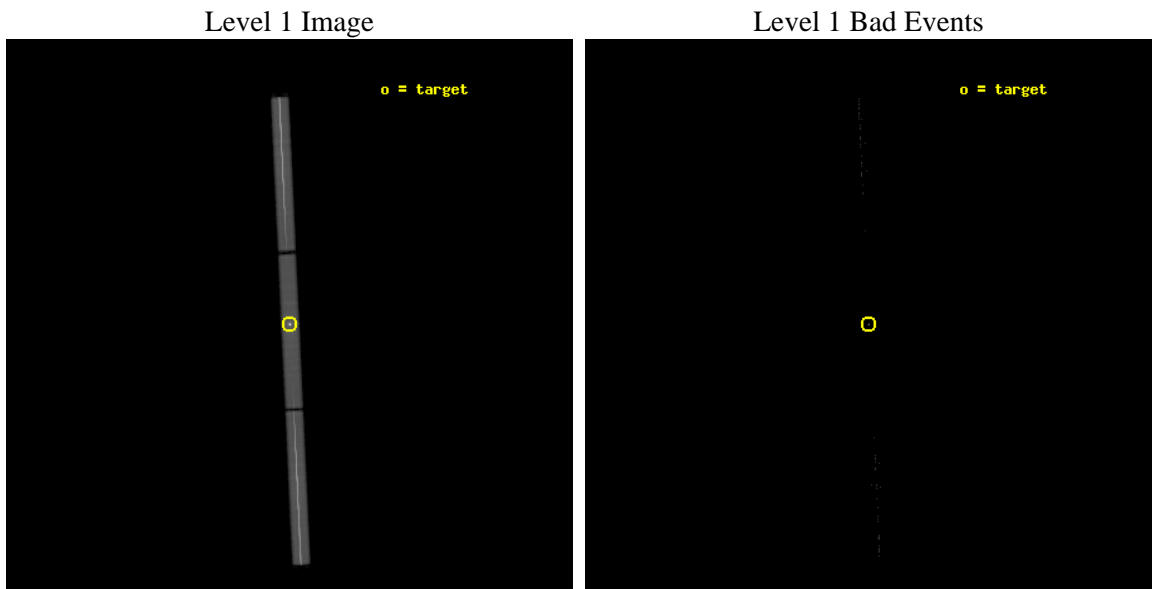
seq_num	290449	Sequence number
obs_id	5957	Observation id
title	AO6 Calibration Observations of HZ43	Proposal title
observer	Dr. CXC Calibration	Principal investigator
object	HZ43	Source name
ra_targ	199.092083	Observer's specified target RA [deg]
dec_targ	29.099	Observer's specified target Dec [deg]
ra_nom	199.09242206894	Nominal RA [deg]
dec_nom	29.103583423981	Nominal Dec [deg]
roll_nom	87.243918782481	Nominal Roll [deg]
revision	3	Processing version of data
ontime	20185.582162768	[s]
livetime	19990.640370125	Ontime multiplied by DTCOR
l2events	1895205	Number of level 2 events



2 OBI

2.1 OBI

2.1.1 Images



2.1.2 Parameters

obi_num	0	Obi number	sched_exp_time	20000.000000	[s] Scheduled observation exposure time
ascdsver	8.5.1	Processing system revision	ontime	20185.582162768	[s]
caldsver	4.5.5	 	l1events	2386281	Number of level 1 events
date	2012-12-17T02:21:57	Date and time of file creation			
revision	3	Processing version of data			

2.1.3 Events

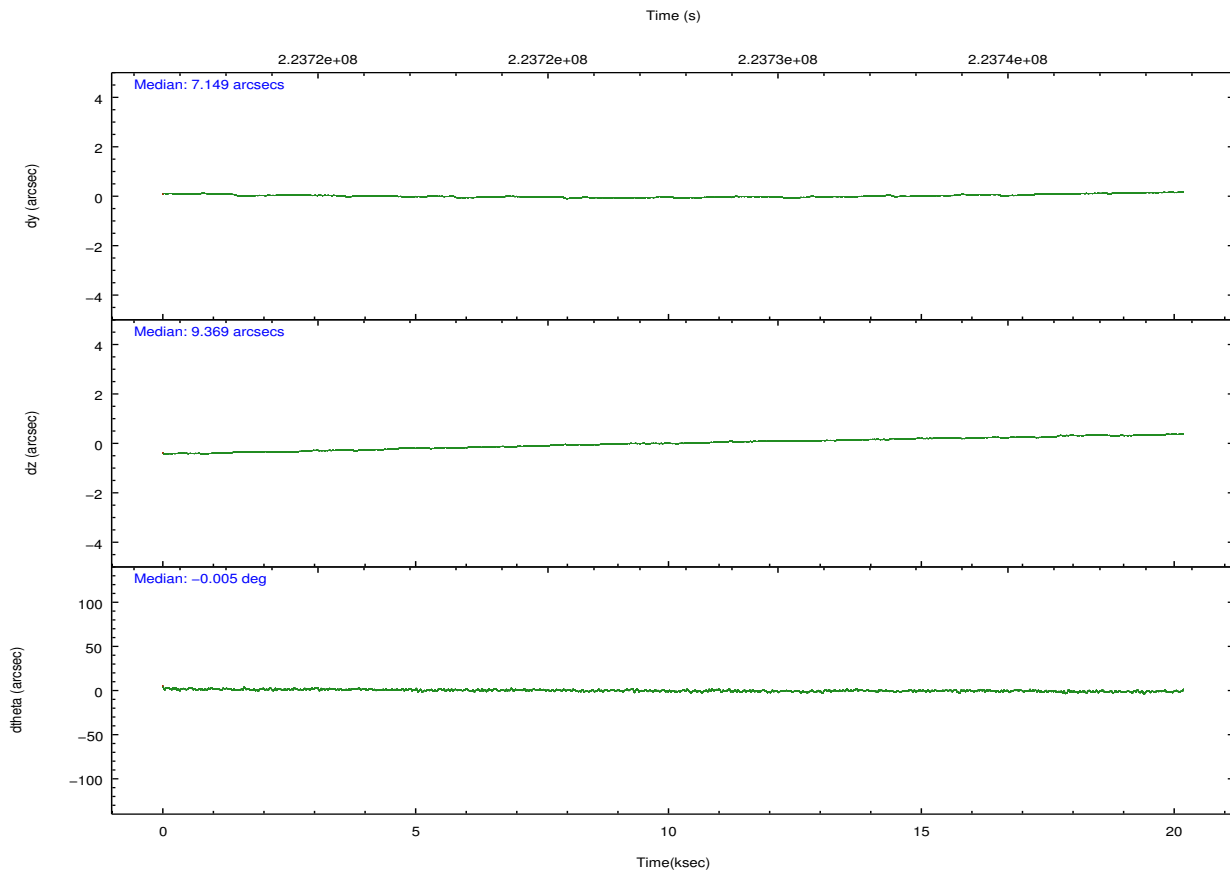
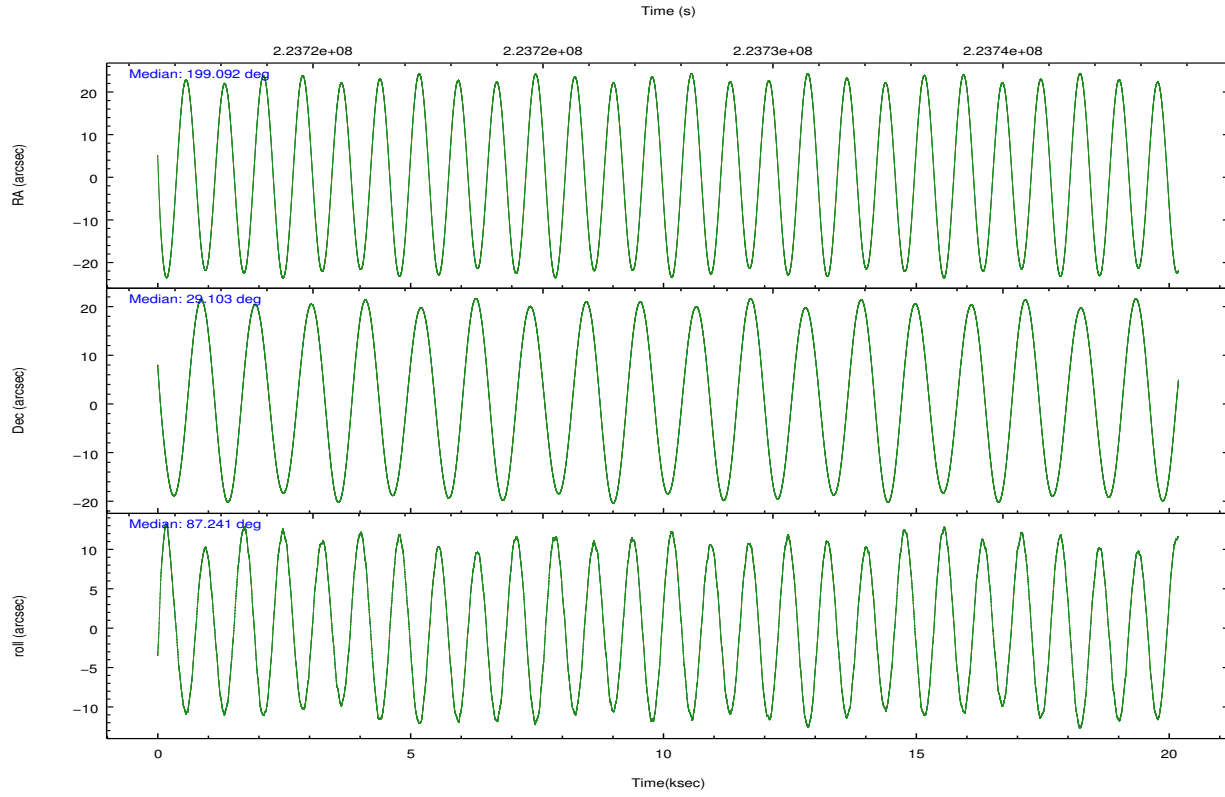
Level 1 Events

	segment 1	segment 2	segment 3
level 1 events	828631	715026	842624
rejected events	21918	20757	21991
rejected %	2%	2%	2%

2.2 Compared Parameters

Parameter	Planned	Actual	Parameter	Planned	Actual
Instrument	HRC	HRC	Obspar format version number	7	7
Detector	HRC-S	HRC-S			
Grating	LETG	LETG			
Data mode	OBSERVING	OBSERVING	Obspar file type	PREDICTED	ACTUAL
Observation mode	POINTING	POINTING			
[deg] Pointing RA	199.108896	199.0924220689381	Obspar update status	NONE	UPDATED
[deg] Pointing Dec	29.078913	29.10358342398062			
[deg] Pointing Roll	87.168577	87.24391878248147			
[s] Window start time (MET)	218246464.184000	218246464.184000			
[s] Window stop time (MET)	225936064.184000	225936064.184000			
[mm] SIM focus pos	-1.429586	-1.428180813131781			
[mm] SIM defocus	0.1037507710433287	0.1051558262725154			
[mm] SIM translation stage pos	250.455976	250.4635187648994			
[mm] SIM translation stage offset	0	-0.007540371344731511			
[s] Observation start time (MET)	223717816.184000	223716934.05049			
Observation start date	2005-02-02T07:49:12	2005-02-02T07:35:34			
[s] Observation end time (MET)	223737816.184000	223739236.0015			
Observation end date	2005-02-02T13:22:32	2005-02-02T13:47:16			

2.3 Aspect

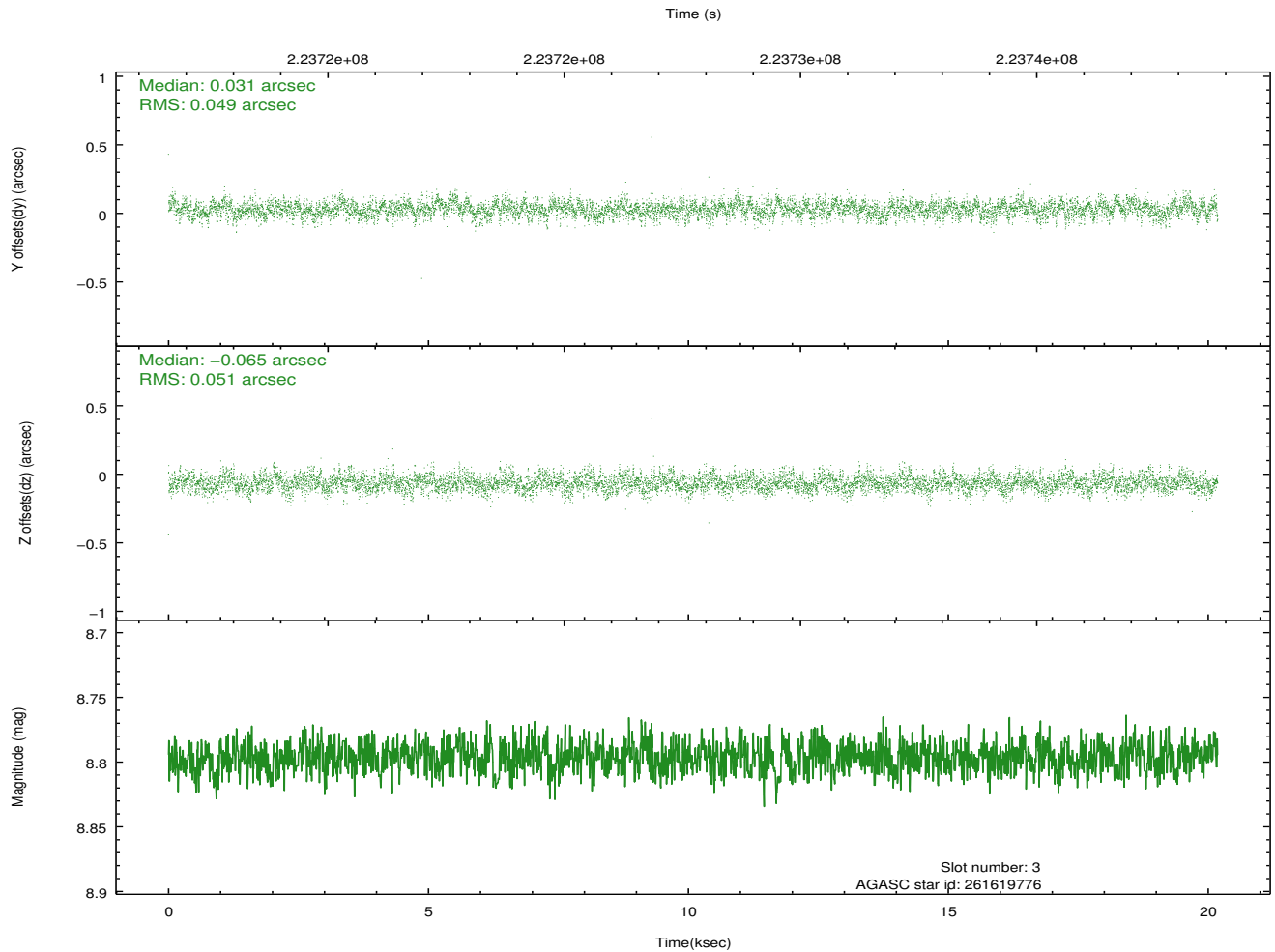
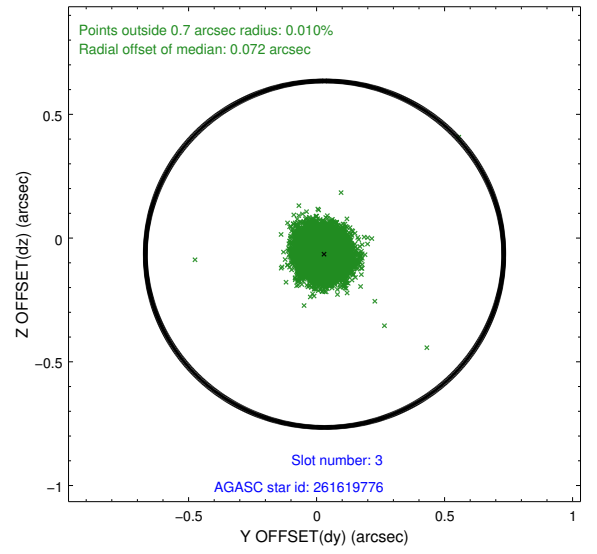
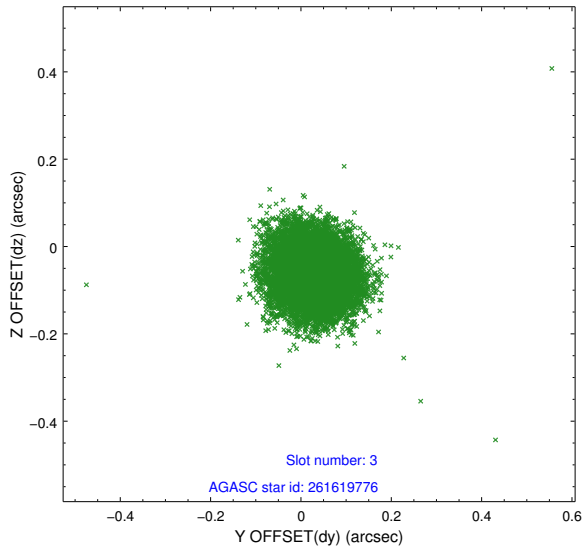


Slot Statistics

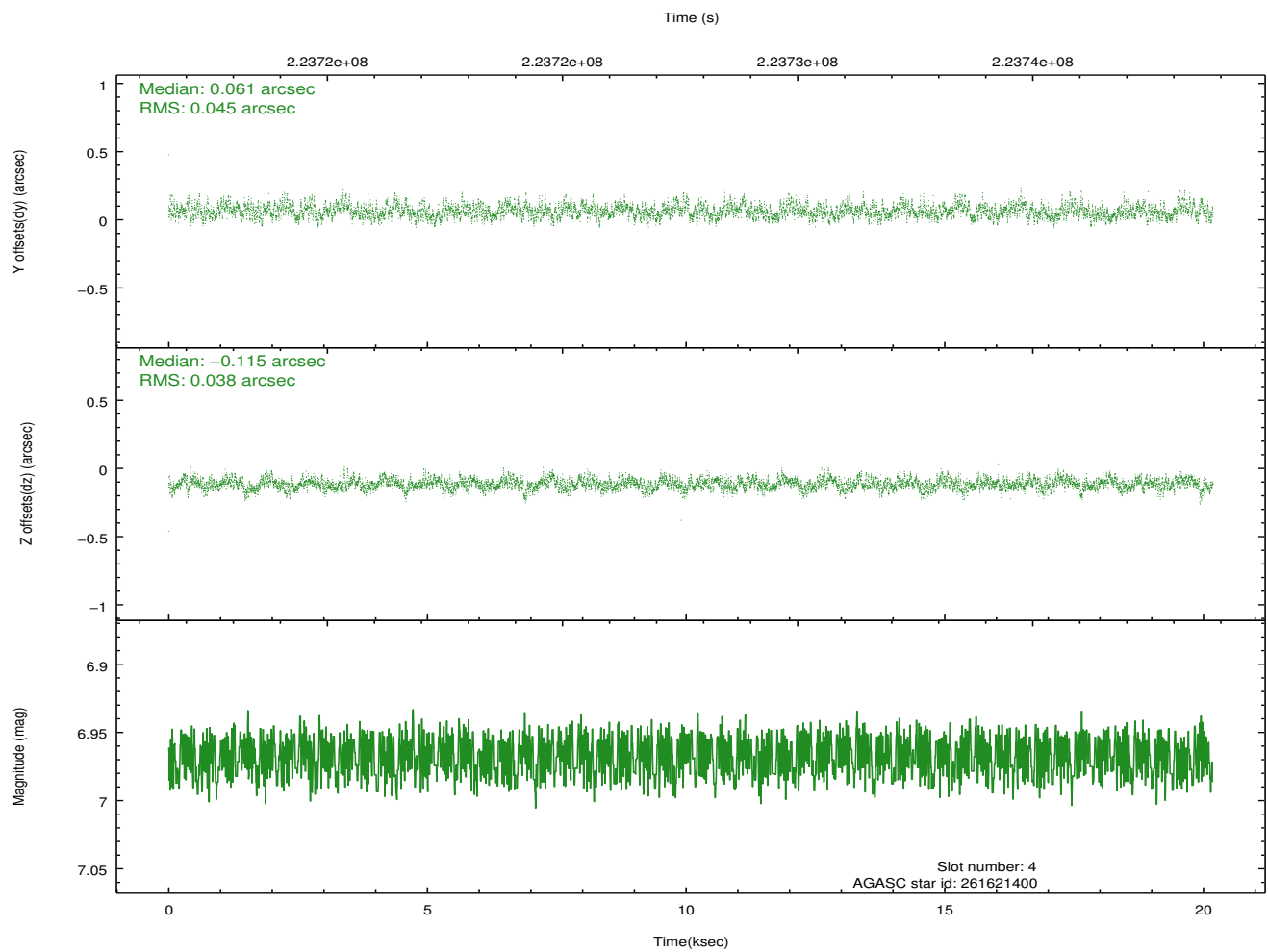
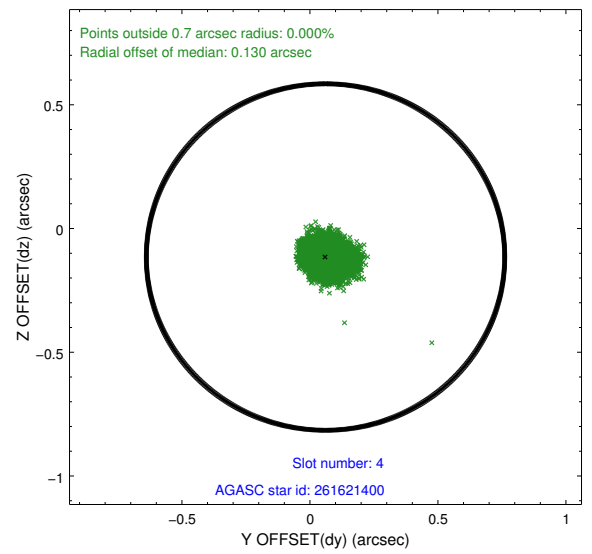
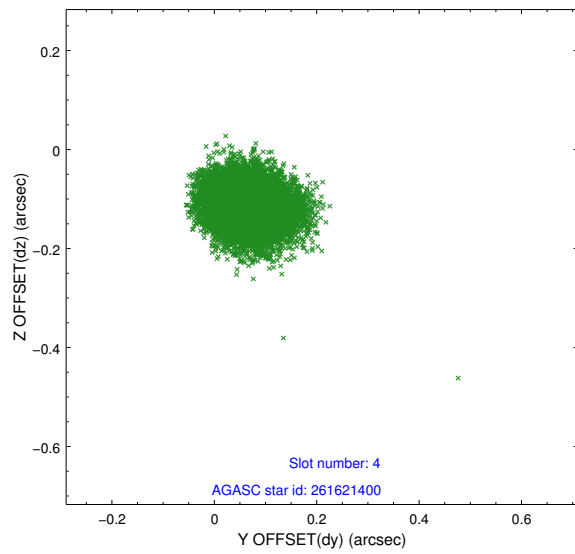
slot	status	id	mag	n_pts	med_dy	med_dz	dr1	dr2	ra	dec	mean_y	mean_z
0	FID	HRC-S-1	7.01	4924	0.084	-0.130	0.005	0.010	0.000000	0.000000	-1161.35	-457.97
1	FID	HRC-S-2	7.00	4924	0.120	-0.123	0.014	0.023	0.000000	0.000000	1238.13	-450.65
2	FID	HRC-S-4	6.97	4924	0.199	-0.051	0.013	0.021	0.000000	0.000000	1237.25	574.16
3	GUIDE	261619776	8.80	9844	0.031	-0.065	0.075	0.121	198.654383	29.401174	1091.20	1480.78
4	GUIDE	261621400	6.97	9848	0.061	-0.115	0.063	0.101	198.901600	28.741982	-1242.70	593.65
5	GUIDE	261624456	7.30	9842	0.103	0.197	0.060	0.097	199.758056	28.567828	-1729.73	-2140.21
6	GUIDE	261626352	8.62	9845	0.040	0.003	0.062	0.097	198.417097	29.781420	2426.10	2284.72
7	GUIDE	261623040	9.14	9835	-0.235	-0.020	0.082	0.135	198.792686	29.757643	2393.29	1108.05

2.4 Star Slots

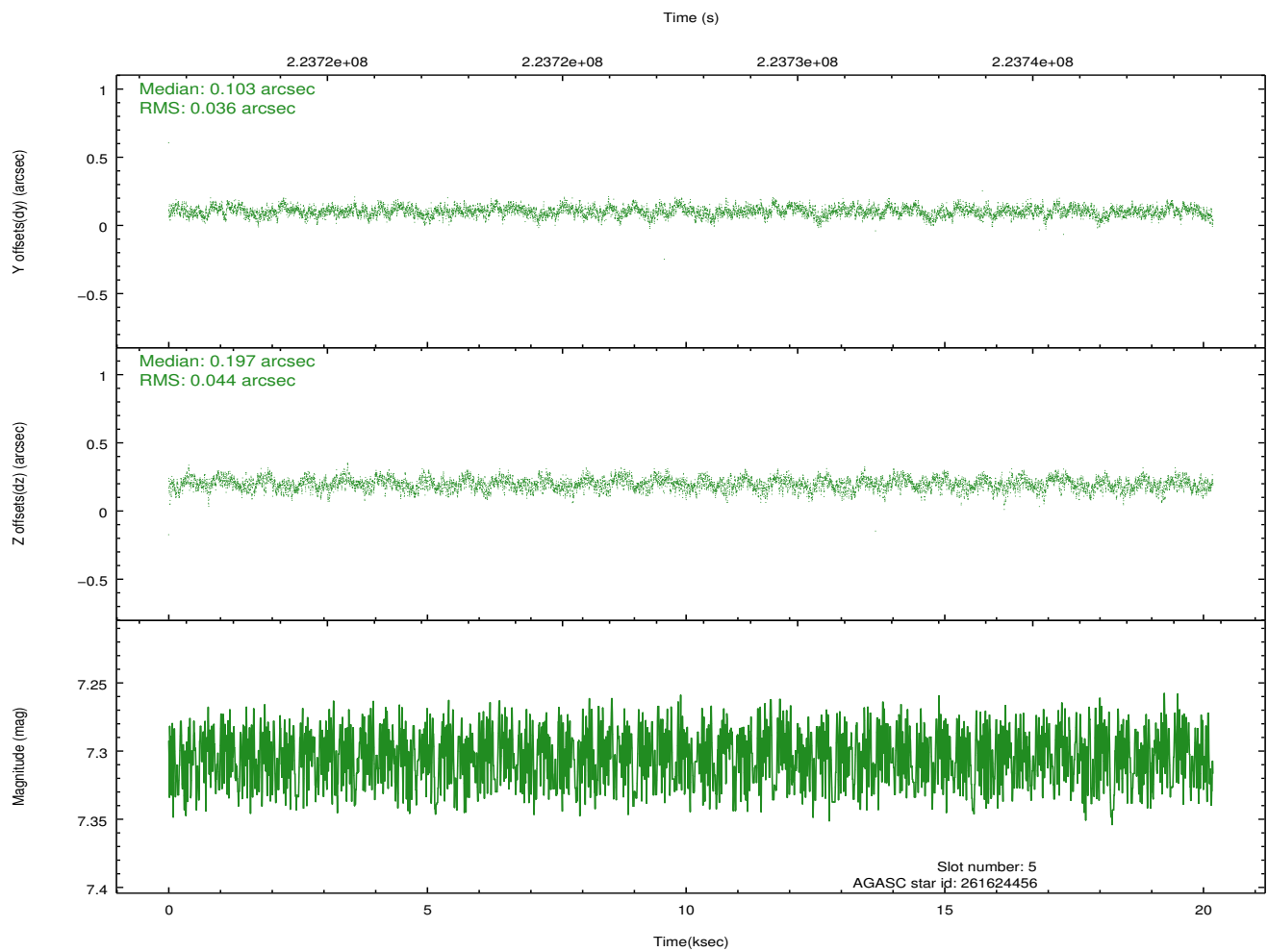
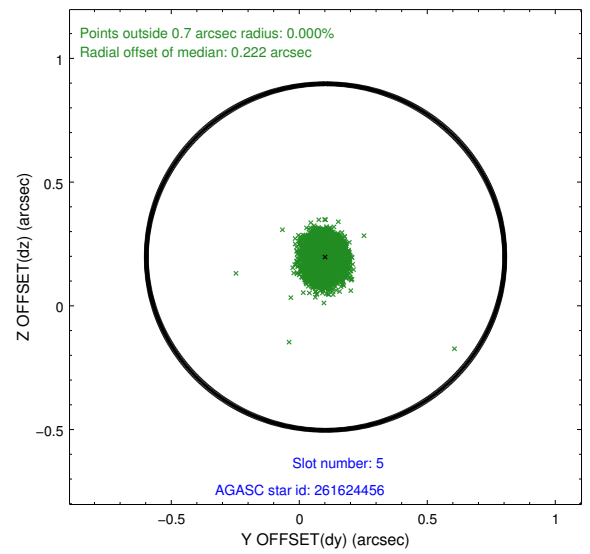
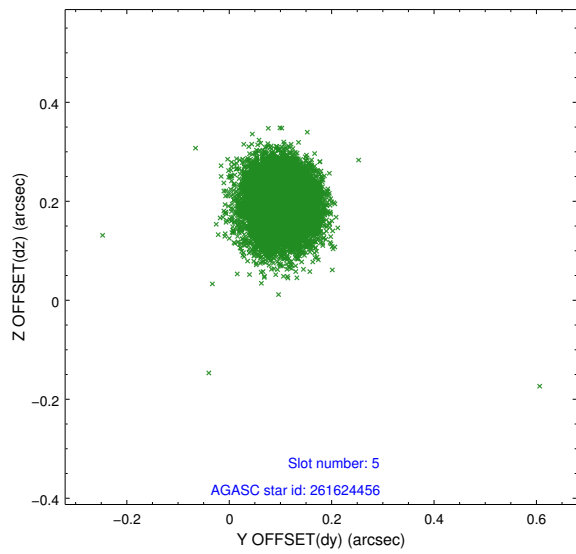
2.4.1 Slot 3



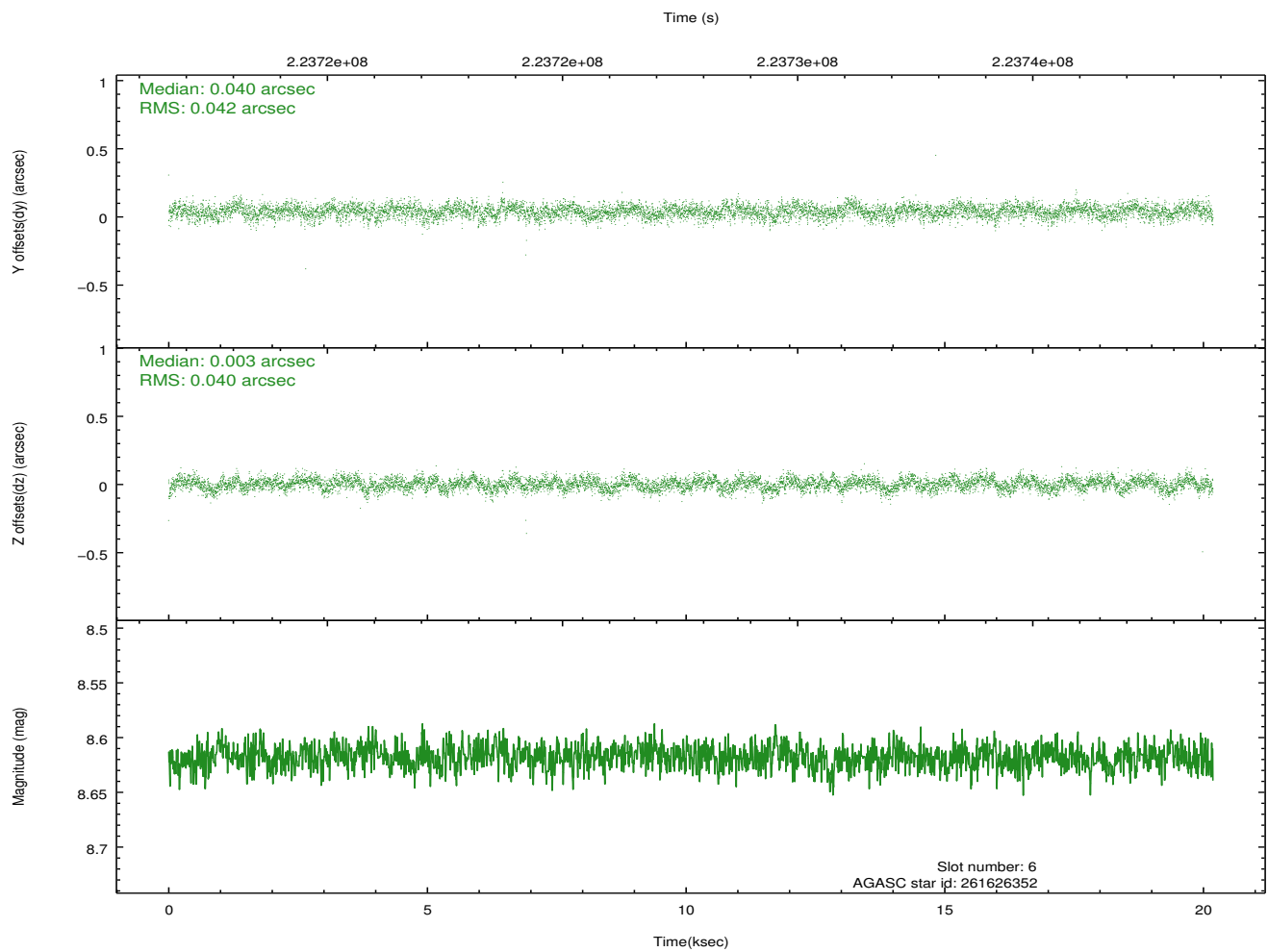
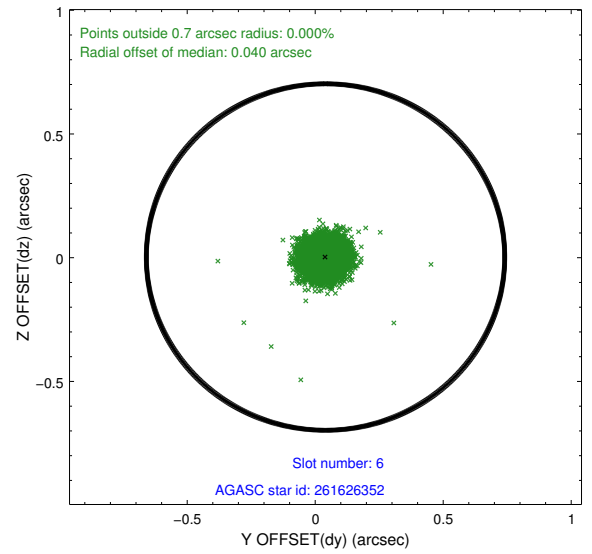
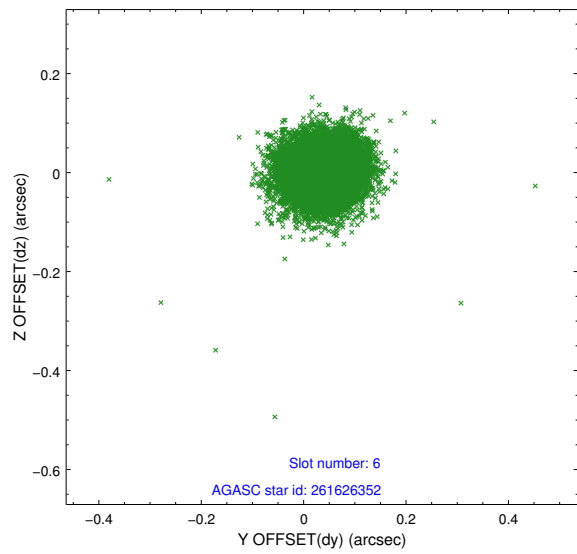
2.4.2 Slot 4



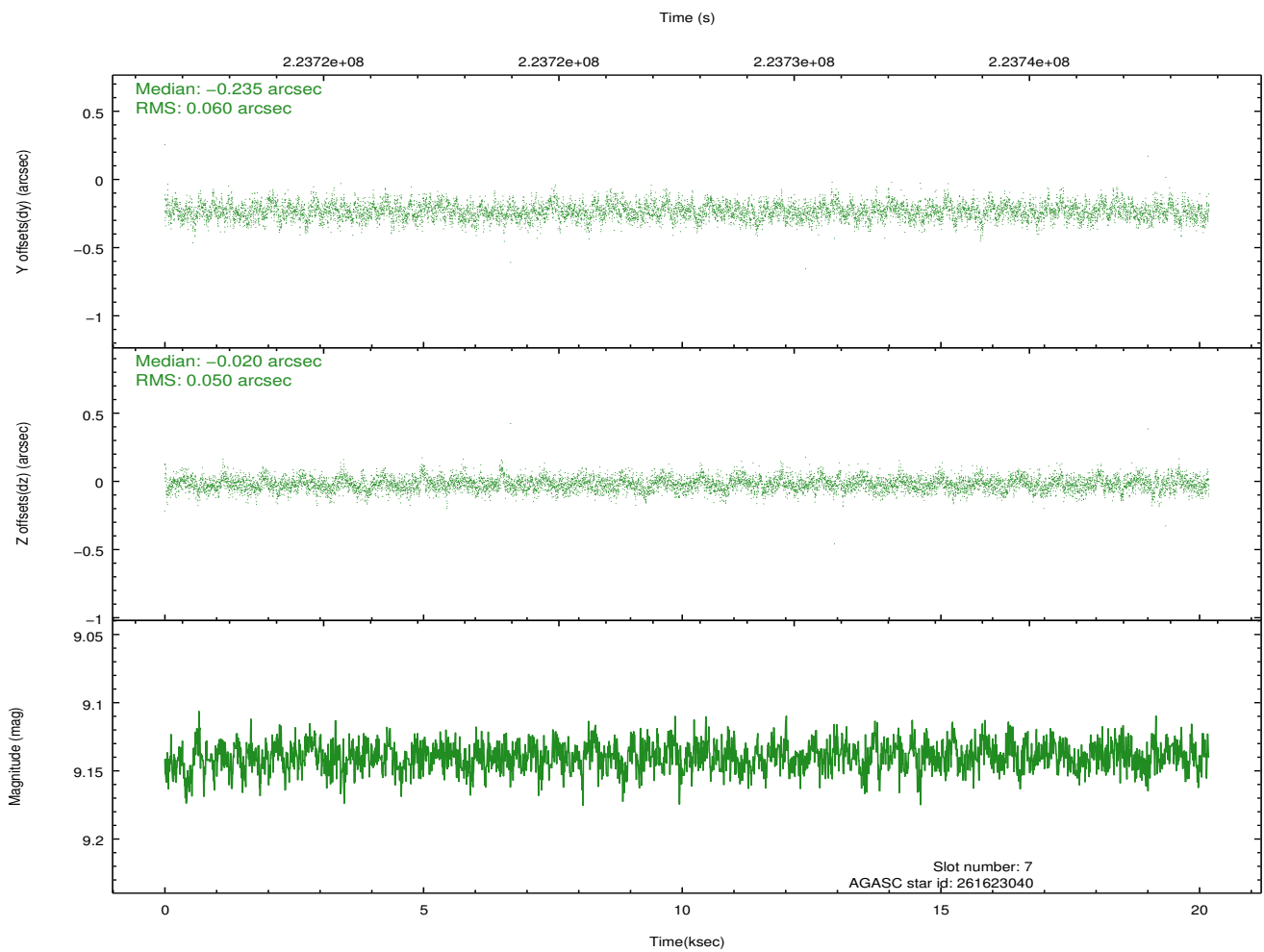
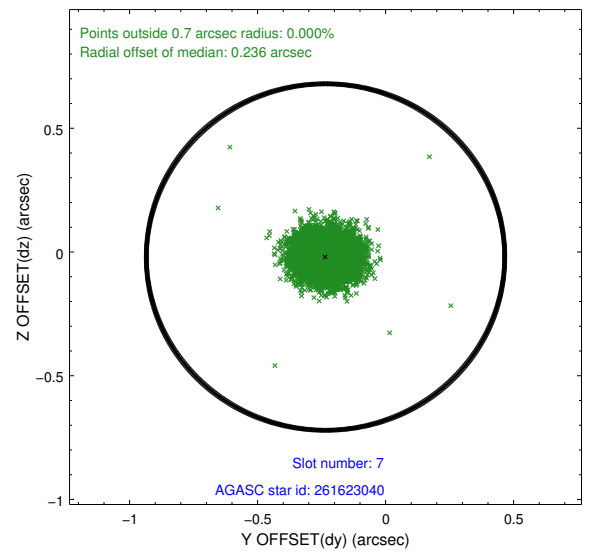
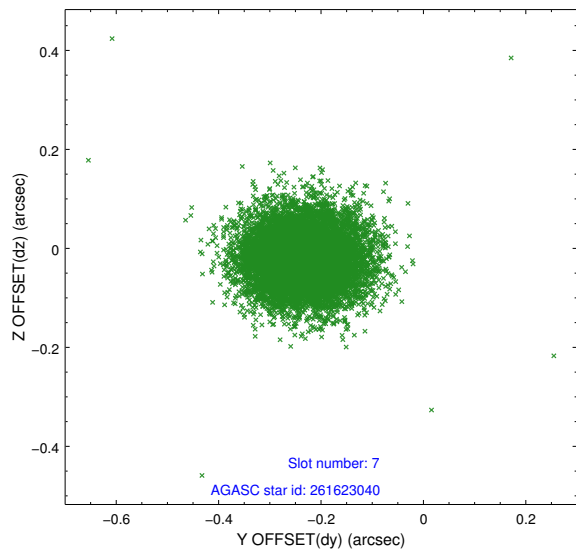
2.4.3 Slot 5



2.4.4 Slot 6

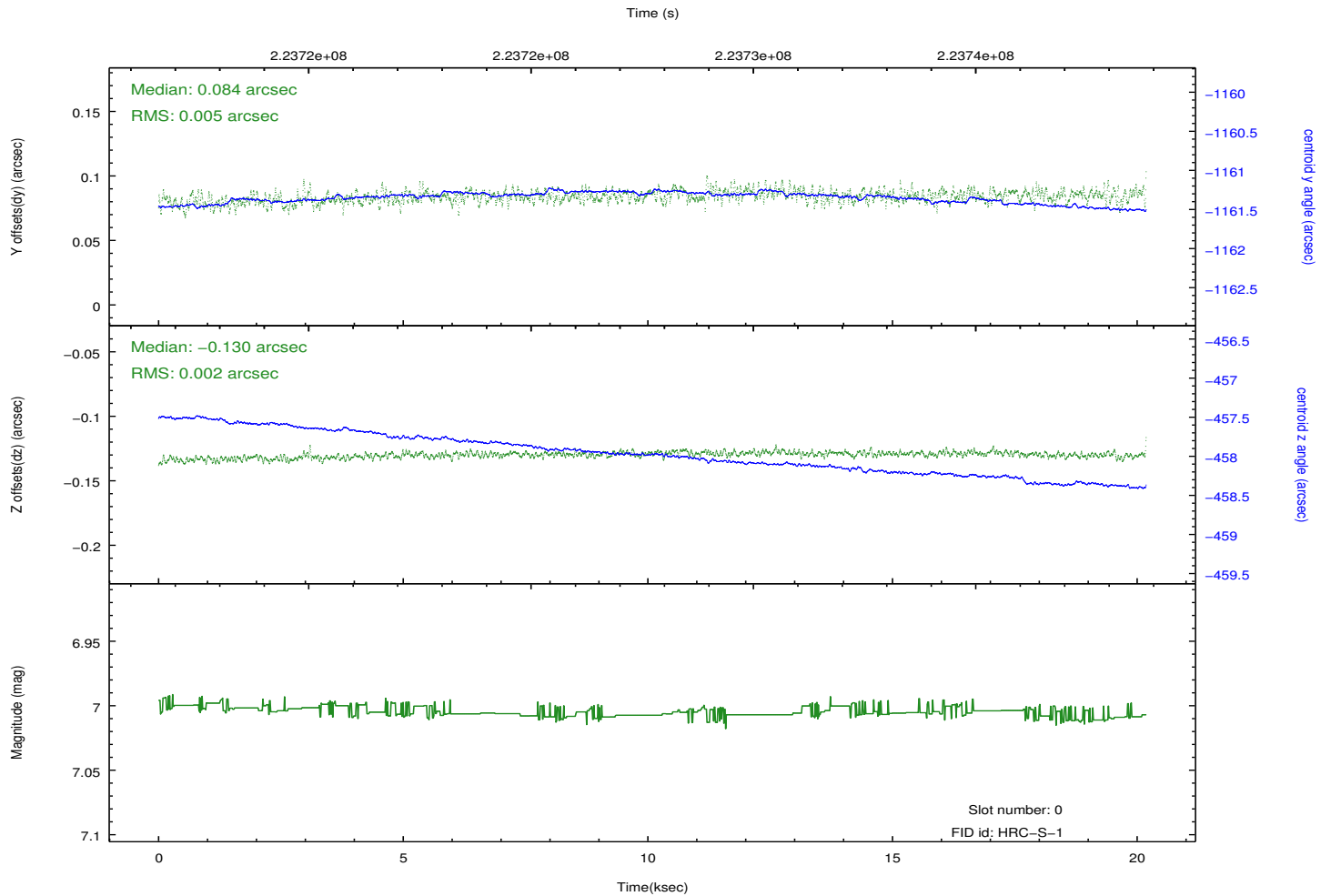
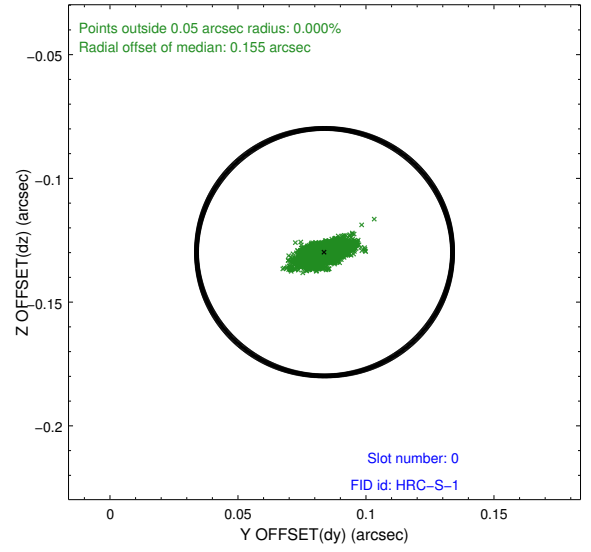
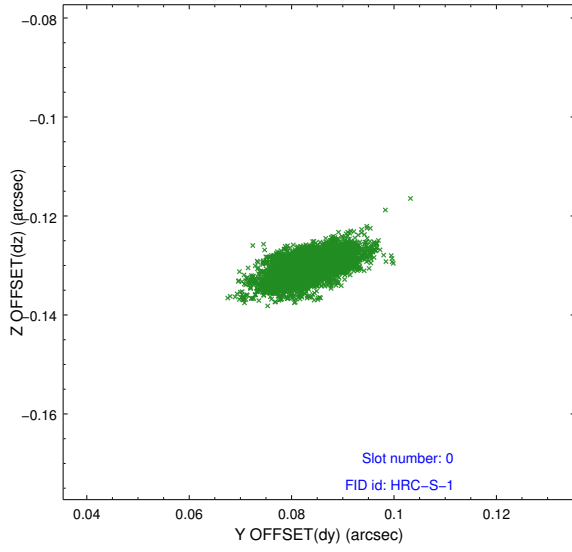


2.4.5 Slot 7

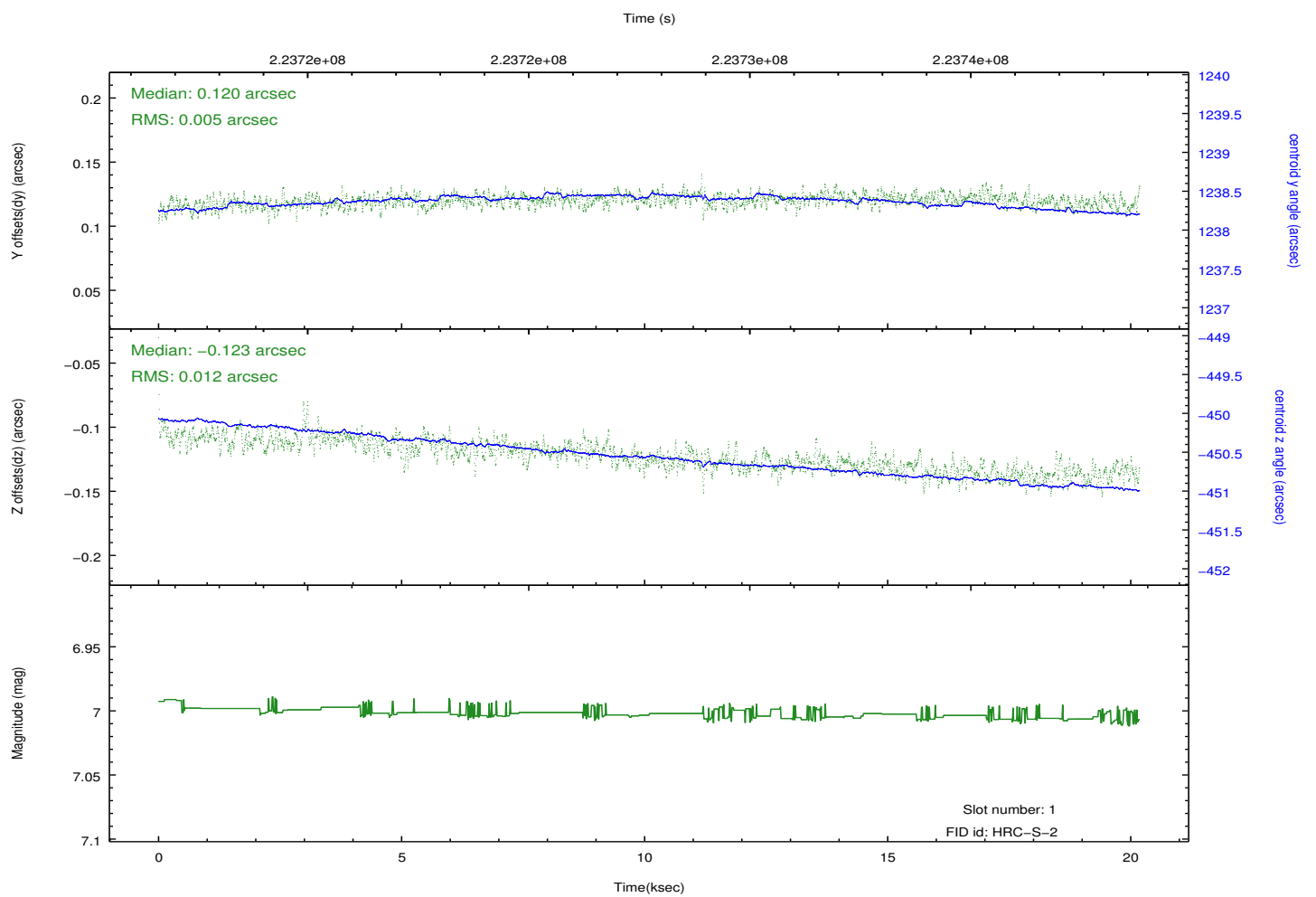
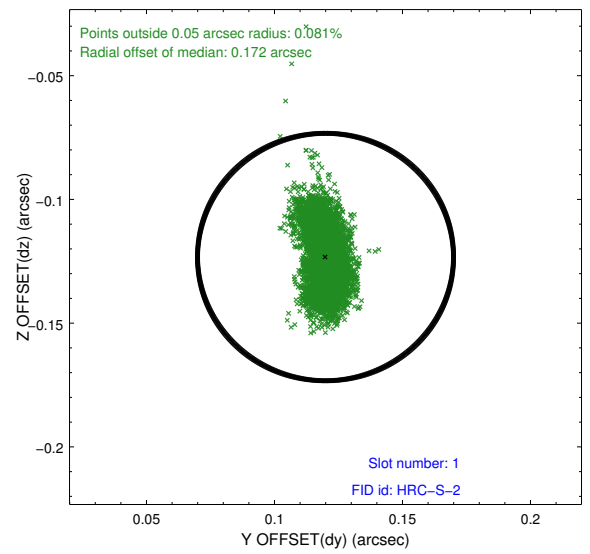
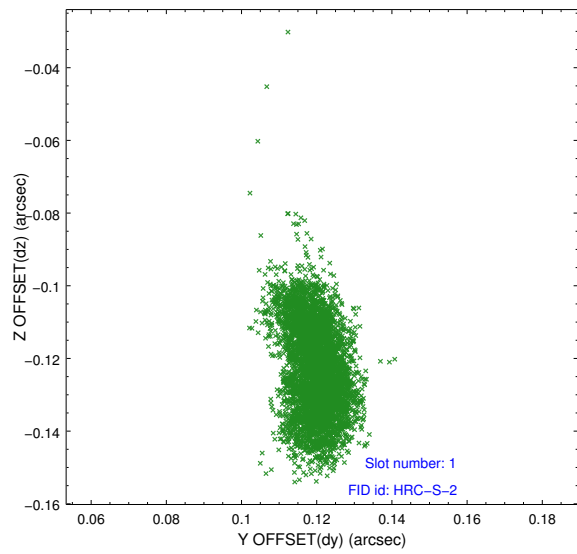


2.5 FID Slots

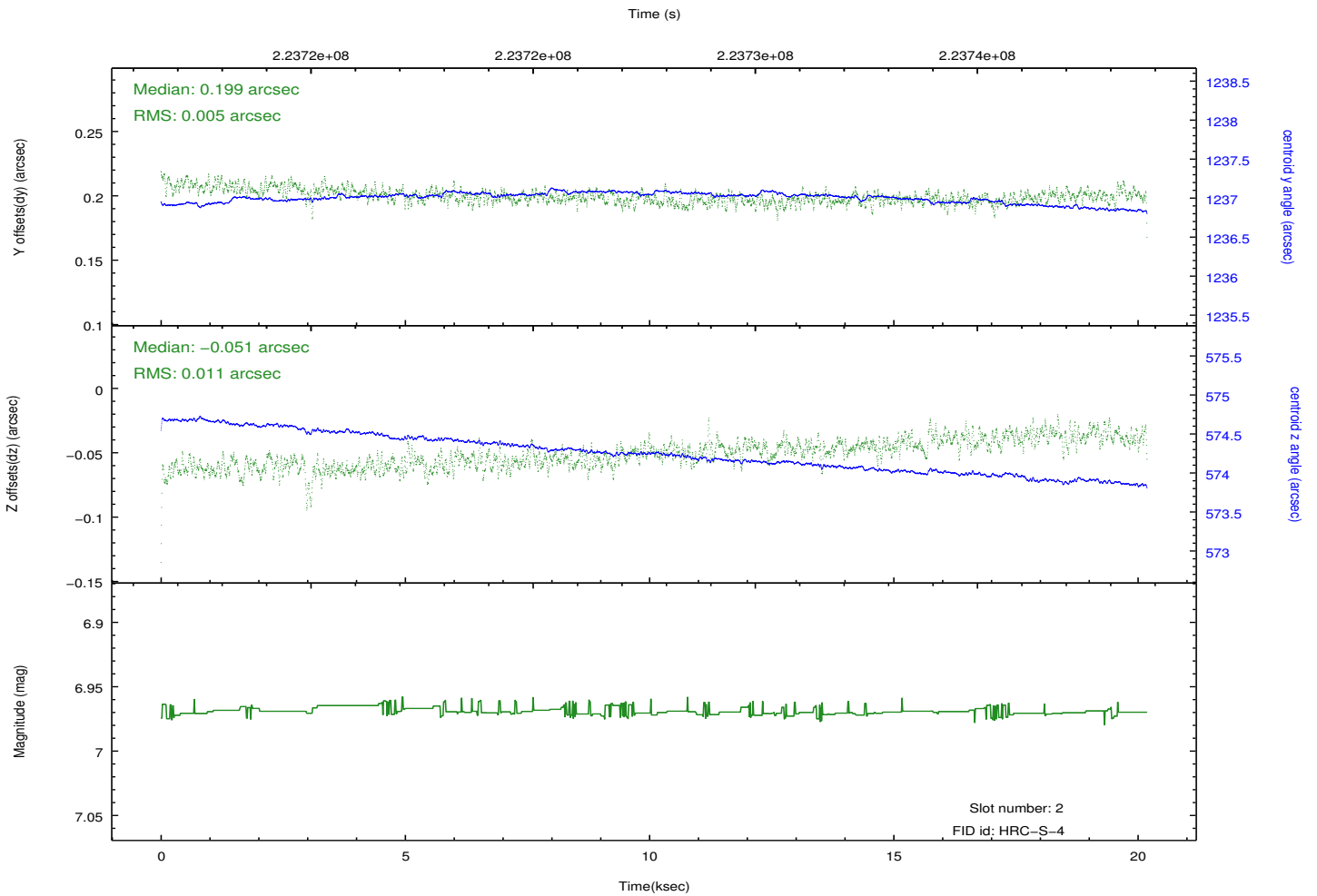
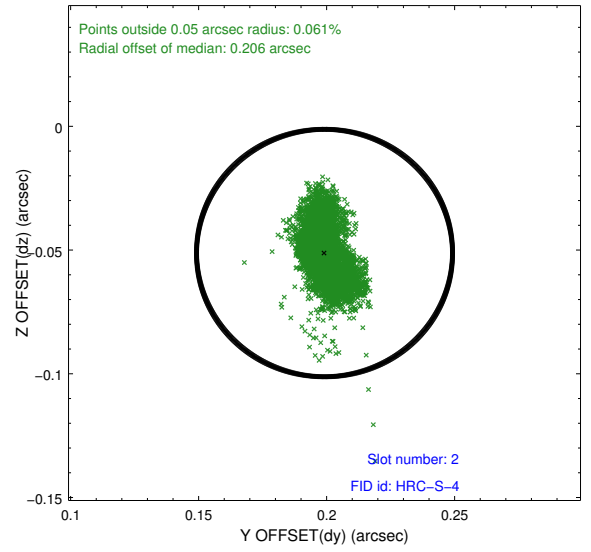
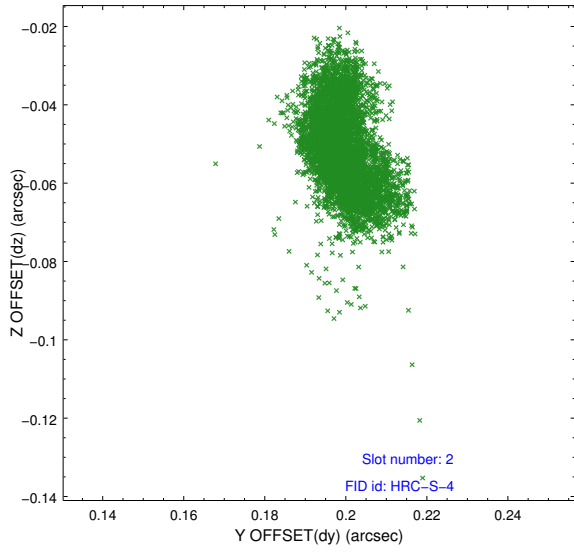
2.5.1 Slot 0



2.5.2 Slot 1

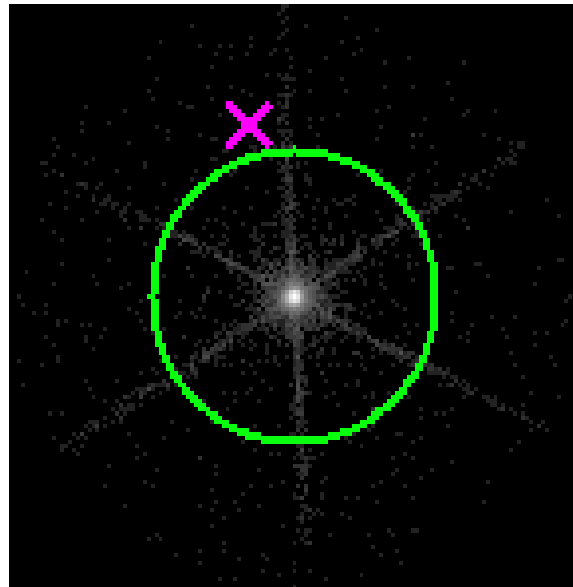


2.5.3 Slot 2

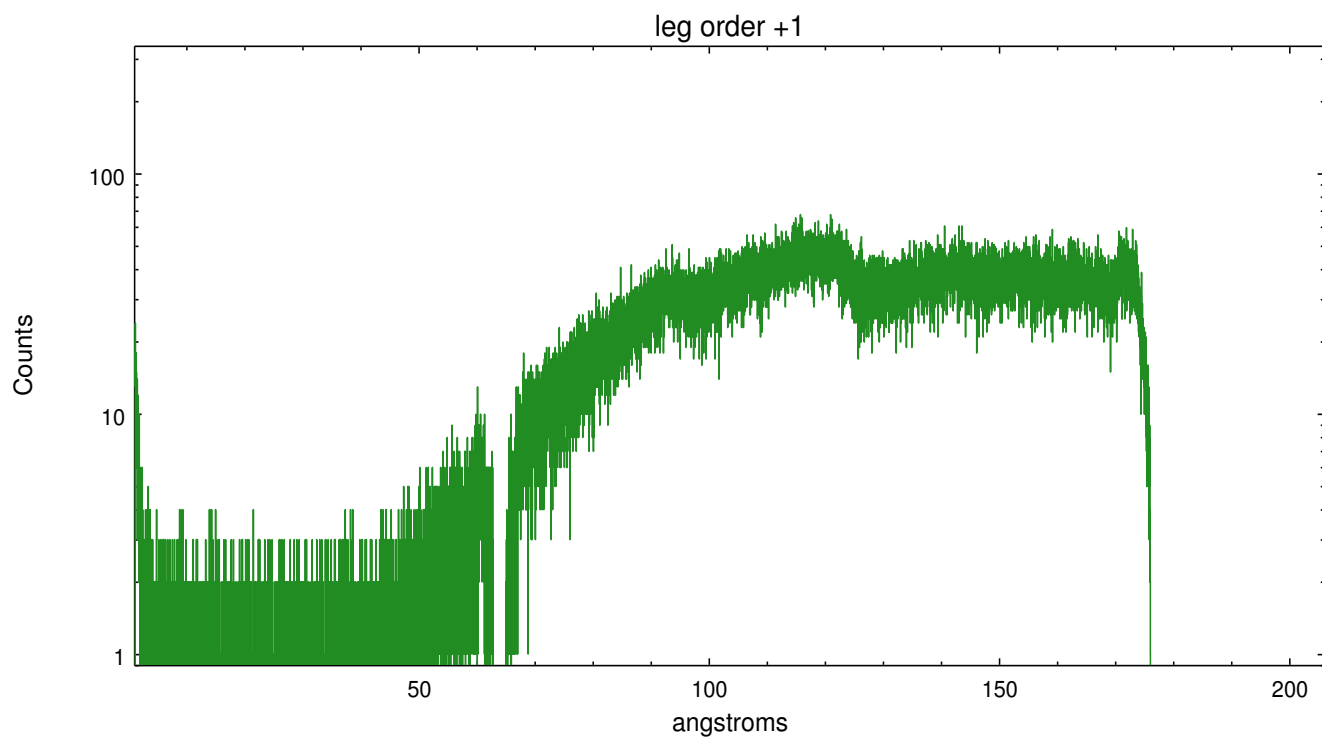
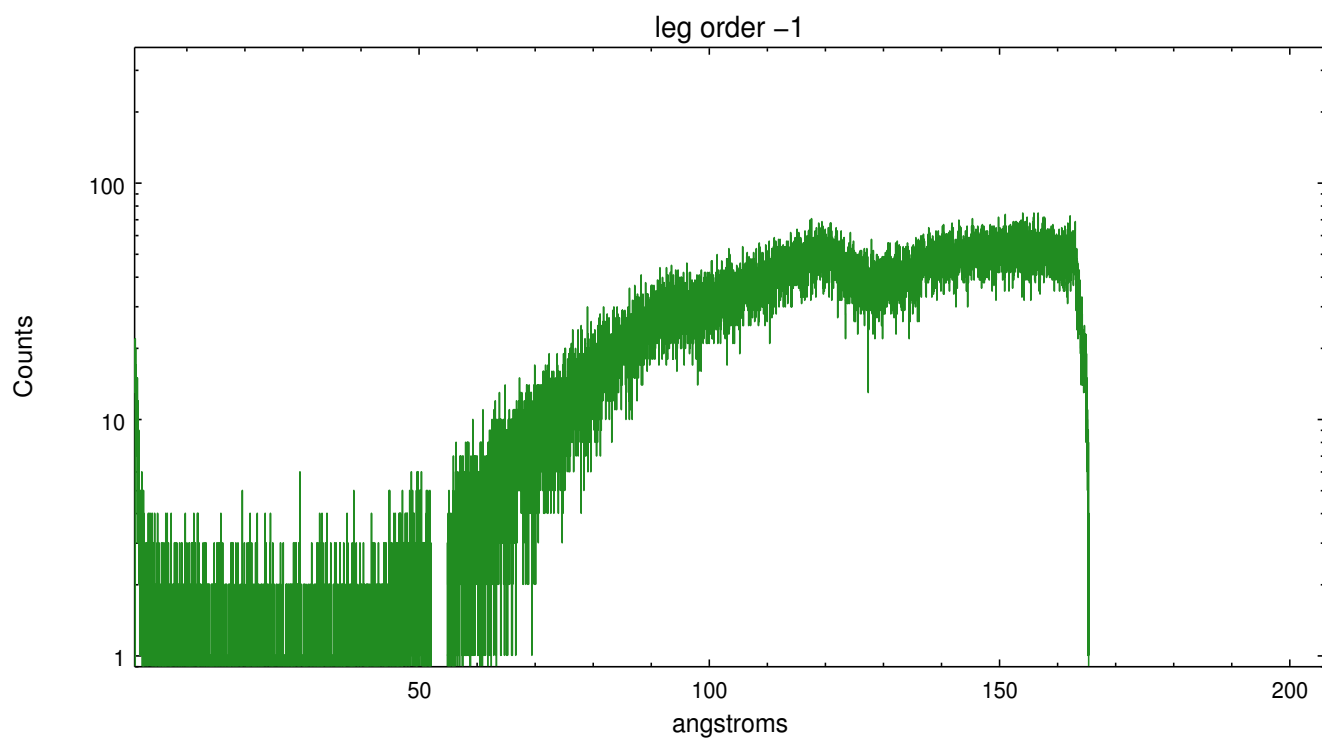


3 Gratings

3.1 LETG Arm



LETG Zero Order



A Summary

A.1 Status

V&V Scientist	Joy Nichols
V&V Date (YYYY-MM-DD)	2013.01.16
V&V Edition	1
V&V Disposition and Status	OK
V&V Charge Time	20.18558

A.2 Comments