

V&V Reference Report

L2 ASCDS Version : 7.6.7

Observation 59667 - L2 Version 002
Chandra X-Ray Center

L2 Processing Date: Mar 3 2006

Contents

1	Front	2
2	OBI	3
2.1	OBI	3
2.1.1	Images	3
2.1.2	Bias	3
2.1.3	Parameters	4
2.1.4	Events	4
2.2	Compared Parameters	5
2.3	Aspect	6
2.4	Star Slots	8
2.5	FID Slots	8
A	Summary	9
A.1	Status	9
A.2	Comments	9

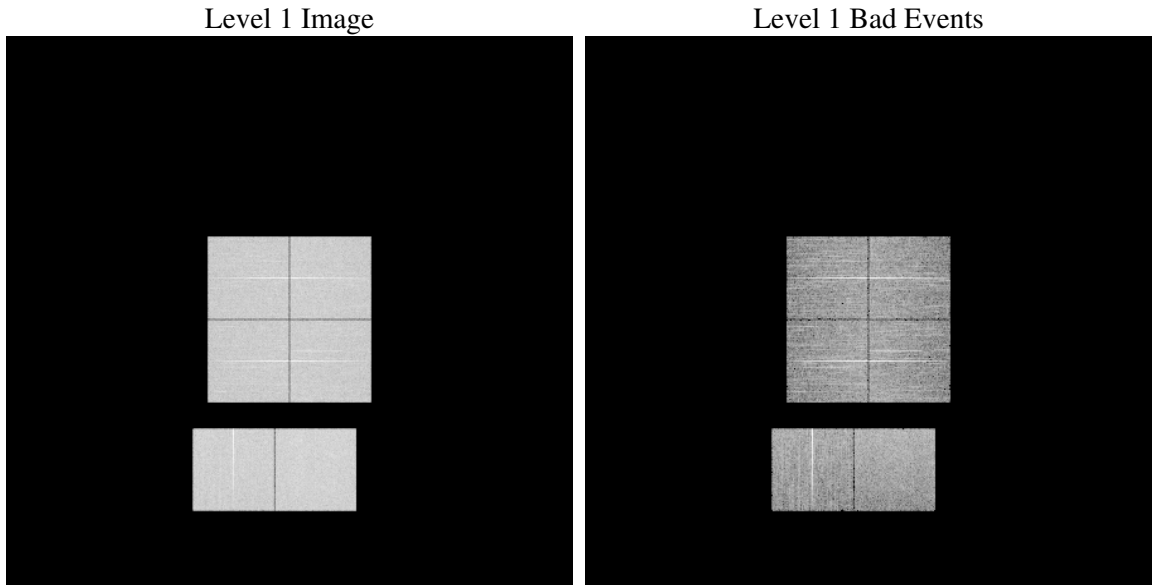
1 Front

seq_num	
obs_id	59667
title	ACIS-012367 diagnostics
observer	CHANDRA engineering request/realtime commanding
object	
dtcycle	0
cycle	P
ra_targ	0.0
dec_targ	0.0
ra_nom	201.00429698931
dec_nom	-7.5282790602213
roll_nom	245.66252313173
revision	2
ontime	8280.4508132637
livetime	8175.5987591772
ontime0	7687.3931887746
ontime1	7891.6157175899
ontime2	7502.7391535044
ontime3	7606.2866516113
ontime6	8060.2285128832
ontime7	8280.4508132637
l2events	1090649

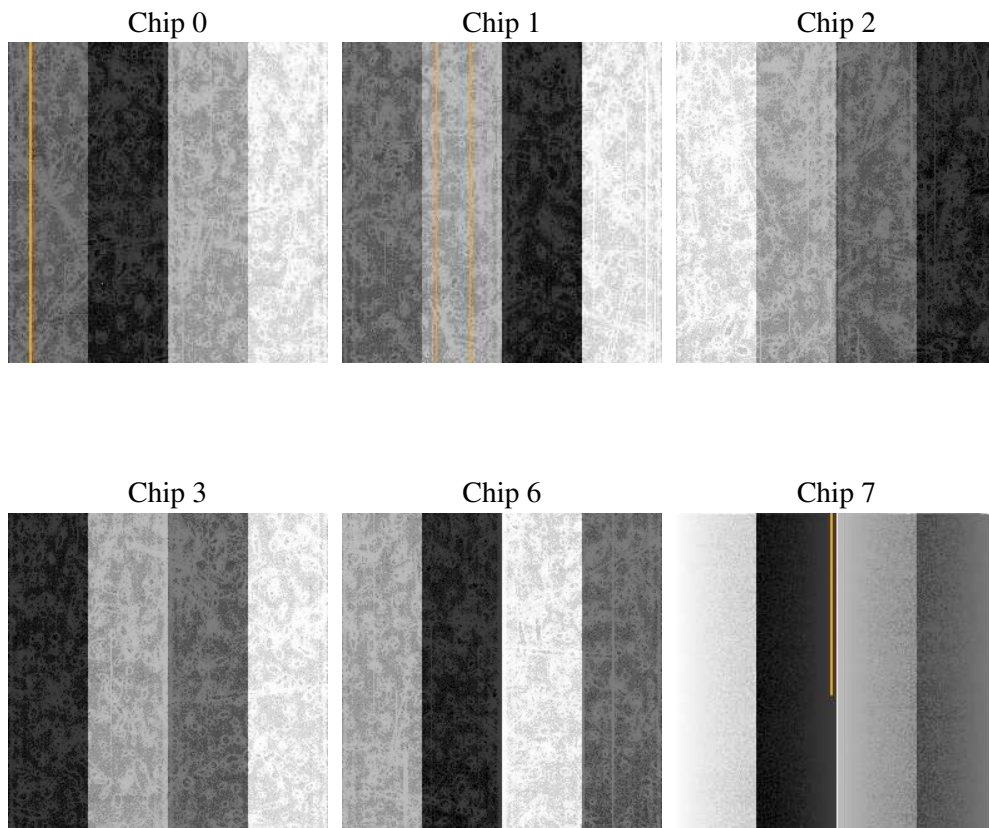
2 OBI

2.1 OBI

2.1.1 Images



2.1.2 Bias



2.1.3 Parameters

obi_num	0
ascdsver	7.6.7
caldbver	3.2.1
date	2006-03-03T14:59:48
revision	2

sched_exp_time	0.0
ontime	8280.7736568749
ontime0	7687.6749923825
ontime1	7891.8564811945
ontime2	7502.9388771057
ontime3	7606.6505352259
ontime6	8060.387196511
ontime7	8280.7736568749
l1events	1488465

2.1.4 Events

	ccd 0	ccd 1	ccd 2	ccd 3	ccd 6	ccd 7
level 1 events	237824	242912	235385	239136	260729	272479
rejected events	53889	54353	55321	55327	60357	61990
rejected %	22%	22%	23%	23%	23%	22%

	ccd 0	ccd 1	ccd 2	ccd 3	ccd 6	ccd 7
grade 0 events	101582	102188	101495	103906	107973	32190
	42%	42%	43%	43%	41%	11%
grade 1 events	570	446	636	589	501	94
	0%	0%	0%	0%	0%	0%
grade 2 events	32276	34513	29773	30641	35738	66099
	13%	14%	12%	12%	13%	24%
grade 3 events	11837	11906	11801	11736	12105	13930
	4%	4%	5%	4%	4%	5%
grade 4 events	11743	11775	11684	11873	12056	13534
	4%	4%	4%	4%	4%	4%
grade 5 events	3222	3397	2964	3444	3696	6772
	1%	1%	1%	1%	1%	2%
grade 6 events	26497	28177	25311	25653	32500	84736
	11%	11%	10%	10%	12%	31%
grade 7 events	50097	50510	51721	51294	56160	55124
	21%	20%	21%	21%	21%	20%

2.2 Compared Parameters

Parameter	Planned	Actual	Parameter	Planned	Actual
Instrument	ACIS	ACIS	Obspar format version number	6	6
Detector	ACIS-012367	ACIS-012367	Obspar file type	PREDICTED	ACTUAL
Grating	NONE	NONE	Obspar update status	NONE	UPDATED
Data mode	FAINT	FAINT	On-chip summing requested	N	N
Observation mode	SECONDARY	SECONDARY	Subarray requested	NONE	NONE
Pointing RA	0	201.0042969893062	Alternating exposures requested	N	N
Pointing Dec	0	-7.528279060221271	Primary exposure time	3.2	3.2
Pointing Roll	0.0	245.6625231317262			
SIM focus pos (mm)	-0.782348	-0.7809083437167272			
SIM defocus (mm)	0	0.7524282956875696			
SIM translation stage pos (mm)	-233.592463	250.4635187648994			
SIM translation stage offset (mm)	0	-0.007540371344731511			
Observation start time	231922035.335259	231922034.31026			
Observation start date	2005-05-08T06:47:15	2005-05-08T06:47:14			
Observation end time	231945436.086325	231945435.06133			
Observation end date	2005-05-08T13:17:16	2005-05-08T13:17:15			
Read mode	TIMED	TIMED			

2.3 Aspect

2.4 Star Slots

2.5 FID Slots

A Summary

A.1 Status

V&V Scientist	Beth Sundheim
V&V Date (YYYY-MM-DD)	2006.03.03
V&V Edition	1
V&V Disposition and Status	OK
V&V Charge Time	8.28045081

A.2 Comments

Focal plane temperature is elevated. Calibration may be affected.