

V&V Reference Report

L2 ASCDS Version : 8.5.1

Observation 6177 - L2 Version 4
Chandra X-Ray Center

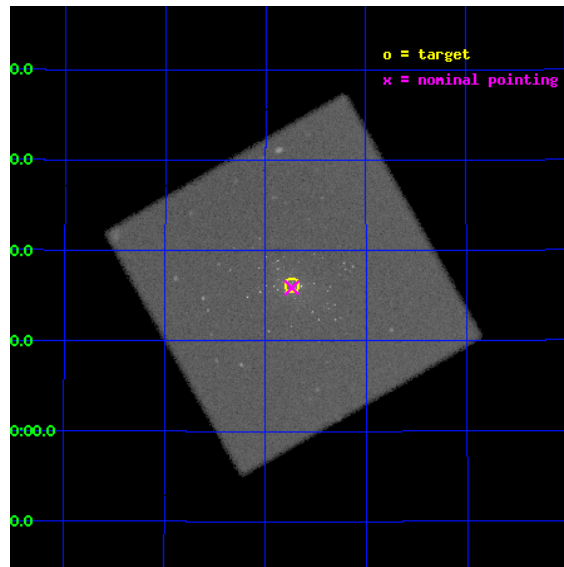
L2 Processing Date : Dec 15 2012

Contents

1	Front	2
2	OBI	3
2.1	OBI	3
2.1.1	Images	3
2.1.2	Parameters	4
2.1.3	Events	4
2.2	Compared Parameters	5
2.3	Aspect	6
2.4	Star Slots	9
2.4.1	Slot 3	9
2.4.2	Slot 4	10
2.4.3	Slot 5	11
2.4.4	Slot 6	12
2.4.5	Slot 7	13
2.5	FID Slots	14
2.5.1	Slot 0	14
2.5.2	Slot 1	15
2.5.3	Slot 2	16
A	Summary	17
A.1	Status	17
A.2	Comments	17

1 Front

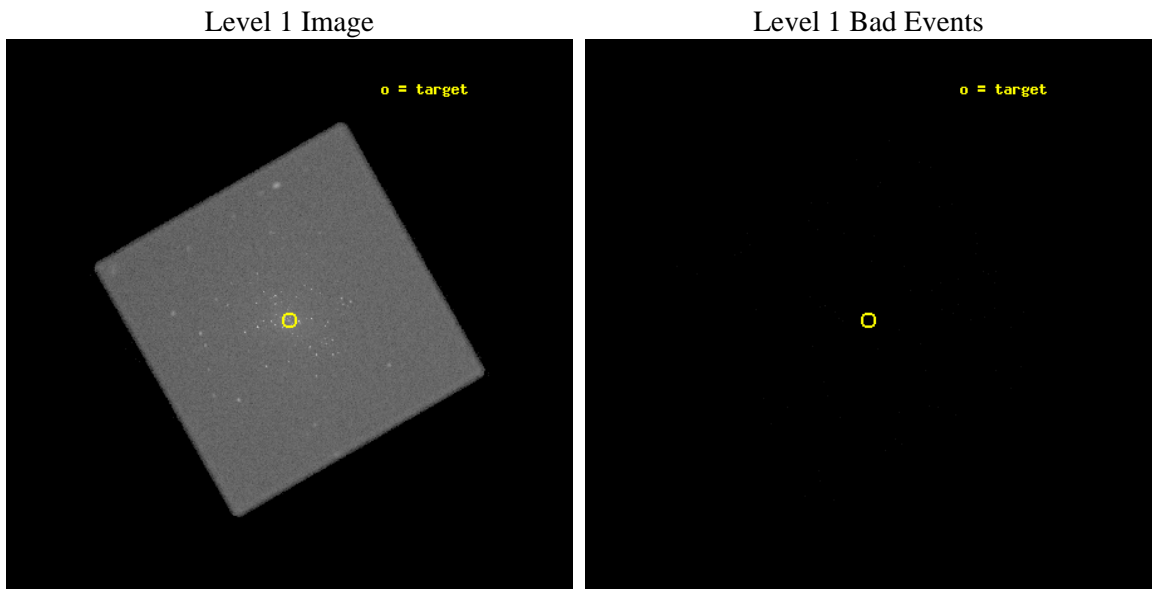
seq_num	600445	Sequence number
obs_id	6177	Observation id
title	M31* - The Nearest Extra-galactic SuperMassive Black Hole	Proposal
observer	Dr. Michael Garcia	Principal investigator
object	M31*	Source name
ra_targ	10.685	Observer's specified target RA [deg]
dec_targ	41.268972	Observer's specified target Dec [deg]
ra_nom	10.684280413851	Nominal RA [deg]
dec_nom	41.264914840779	Nominal Dec [deg]
roll_nom	285.27013419996	Nominal Roll [deg]
revision	4	Processing version of data
ontime	20187.632159561	[s]
livedtime	20037.994823935	Ontime multiplied by DTCOR
l2events	850721	Number of level 2 events



2 OBI

2.1 OBI

2.1.1 Images



2.1.2 Parameters

obi_num	0	Obi number	sched_exp_time	20000.000000	[s] Scheduled observation exposure time
ascdsver	8.5.1	Processing system revision	ontime	20187.632159561	[s]
caldbver	4.5.5	 	l1events	1341824	Number of level 1 events
date	2012-12-15T05:14:56	Date and time of file creation			
revision	4	Processing version of data			

2.1.3 Events

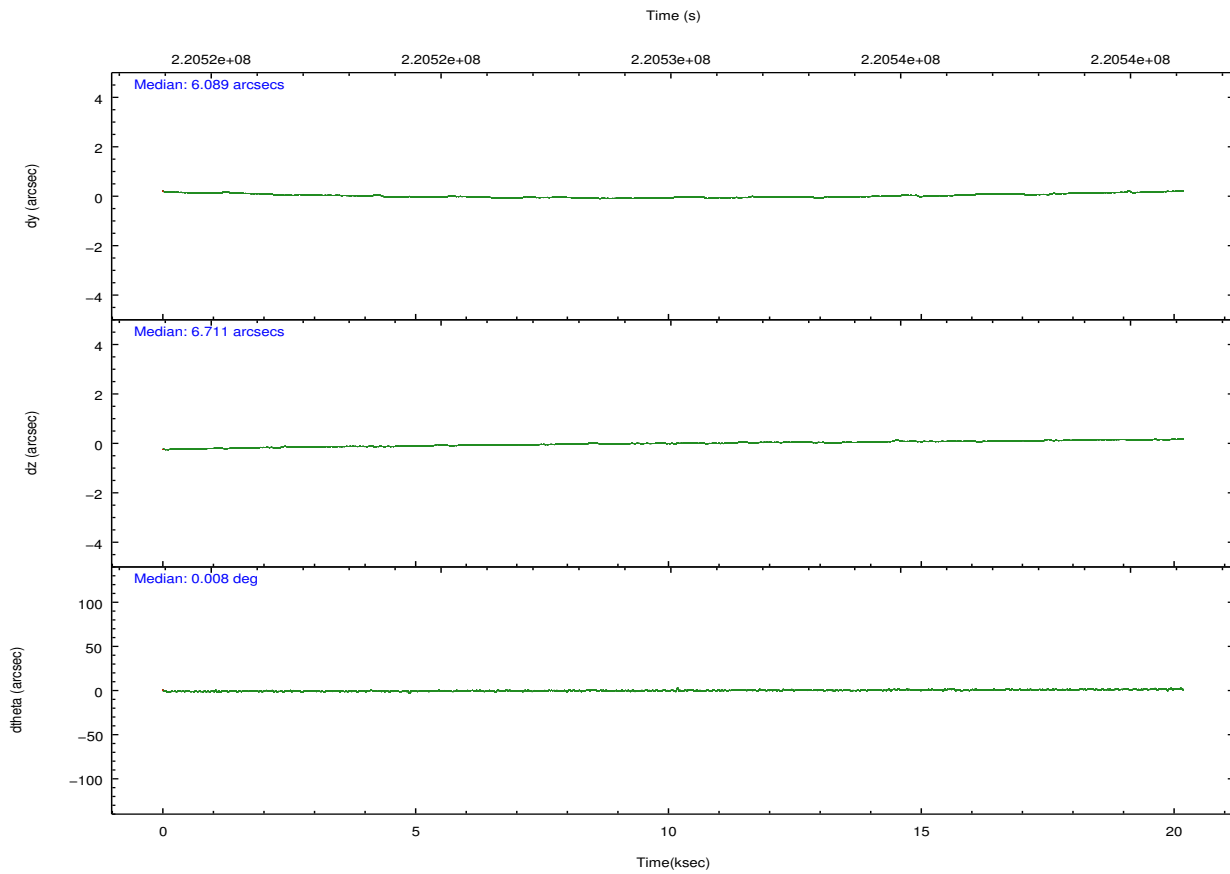
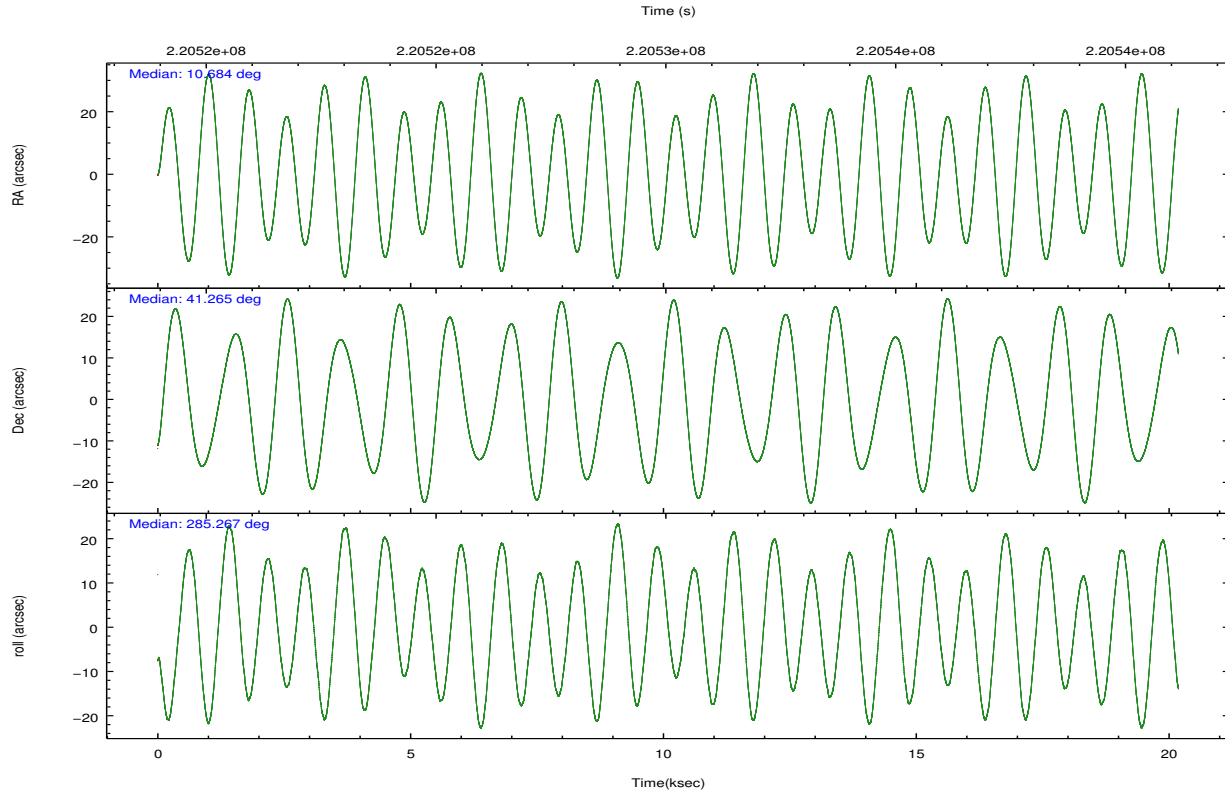
Level 1 Events

	segment 0
level 1 events	1341824
rejected events	101340
rejected %	7%

2.2 Compared Parameters

Parameter	Planned	Actual	Parameter	Planned	Actual
Instrument	HRC	HRC	Obspar format version number	7	7
Detector	HRC-I	HRC-I	Obspar file type	PREDICTED	ACTUAL
Grating	NONE	NONE	Obspar update status	NONE	UPDATED
Data mode	OBSERVING	OBSERVING			
Observation mode	POINTING	POINTING			
[deg] Pointing RA	10.658077	10.68428041385102			
[deg] Pointing Dec	41.283463	41.26491484077876			
[deg] Pointing Roll	285.382902	285.2701341999612			
[mm] SIM focus pos	-1.040293	-1.038866356238299			
[mm] SIM defocus	0	0.001426264420575141			
[mm] SIM translation stage pos	126.985494	126.9854943052878			
[mm] SIM translation stage offset	0	-5.413686238853188e-06			
[s] Observation start time (MET)	220520138.184000	220519157.86872			
Observation start date	2004-12-27T07:34:34	2004-12-27T07:19:17			
[s] Observation end time (MET)	220540138.184000	220540890.9447			
Observation end date	2004-12-27T13:07:54	2004-12-27T13:21:30			

2.3 Aspect

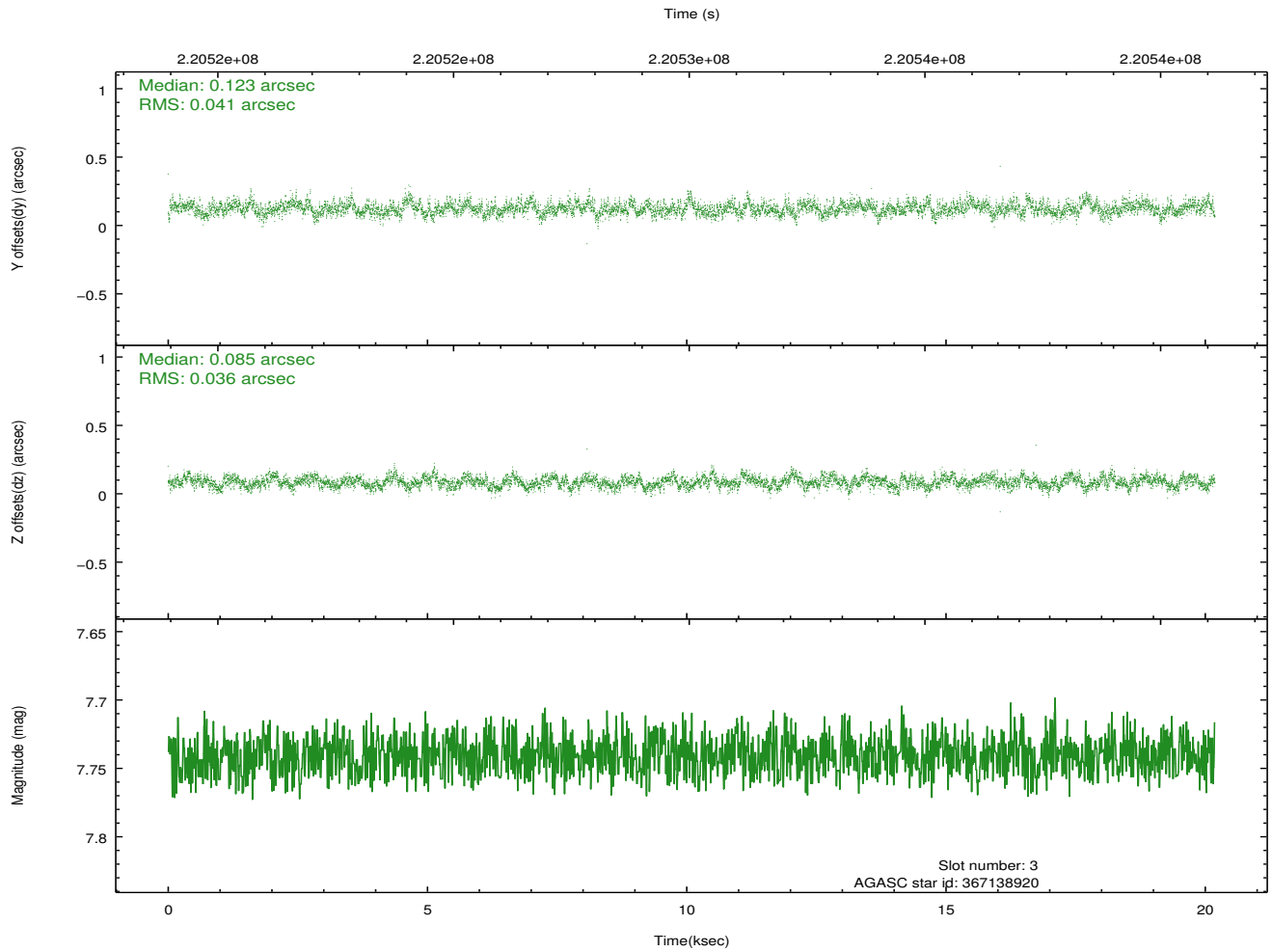
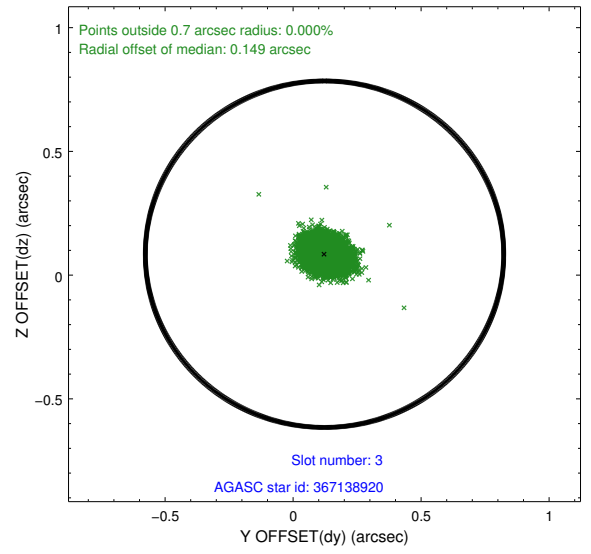
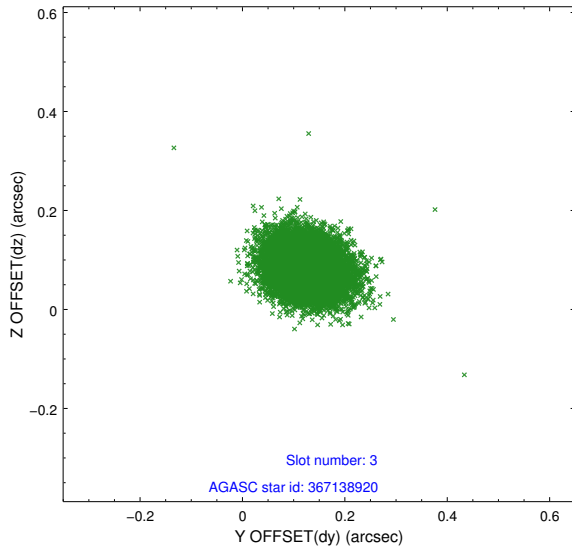


Slot Statistics

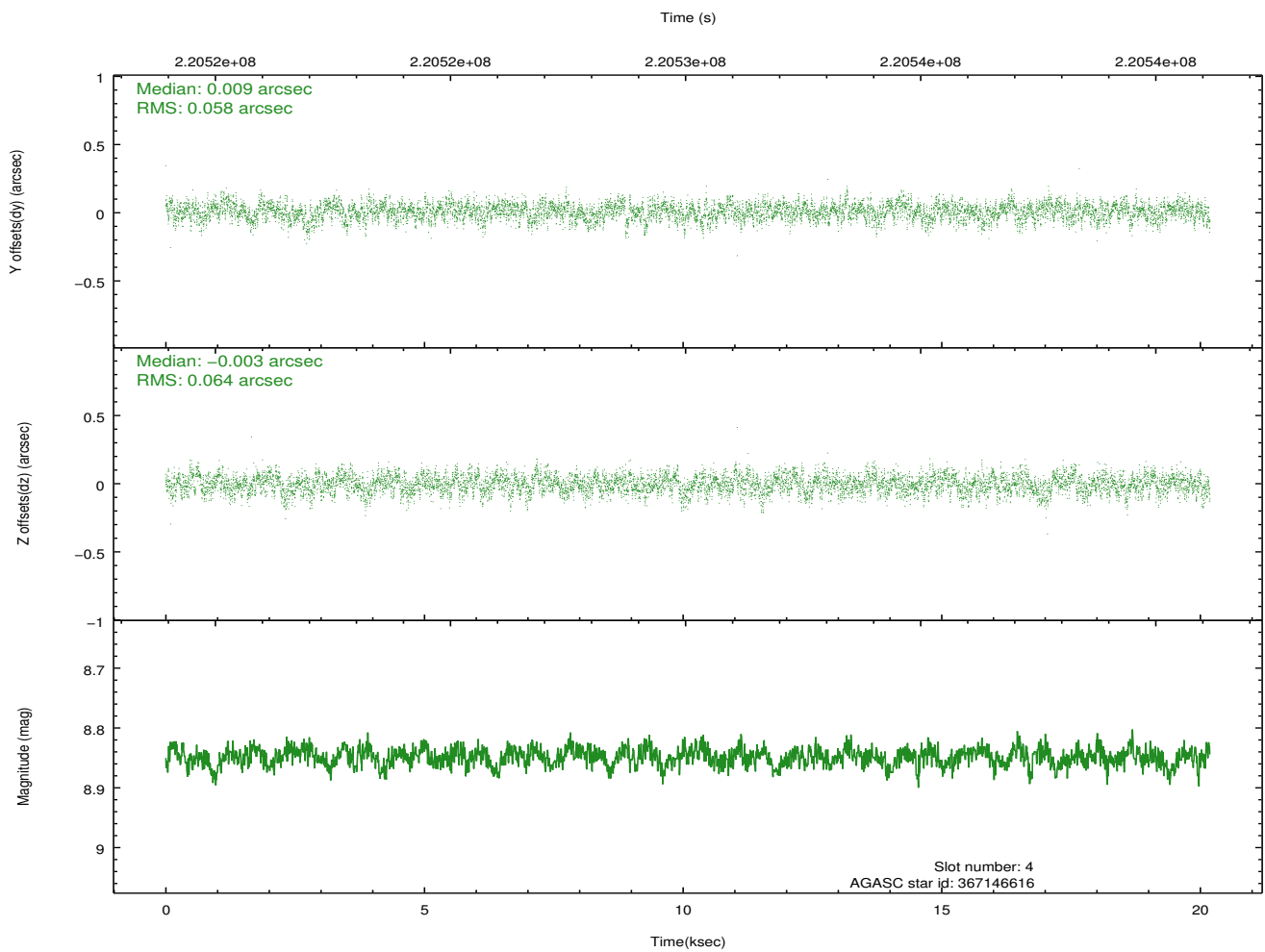
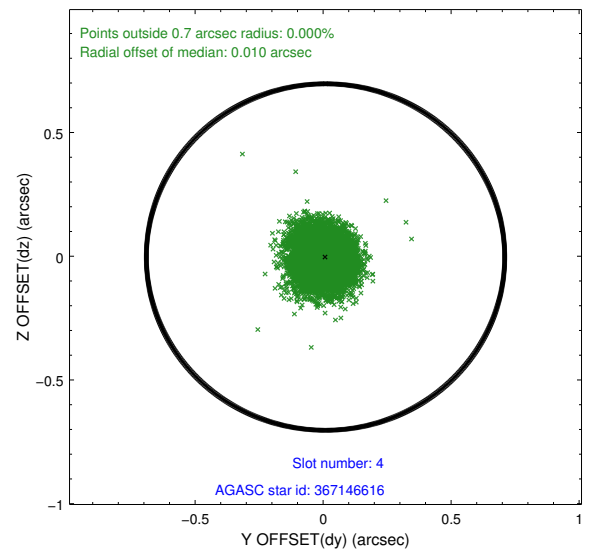
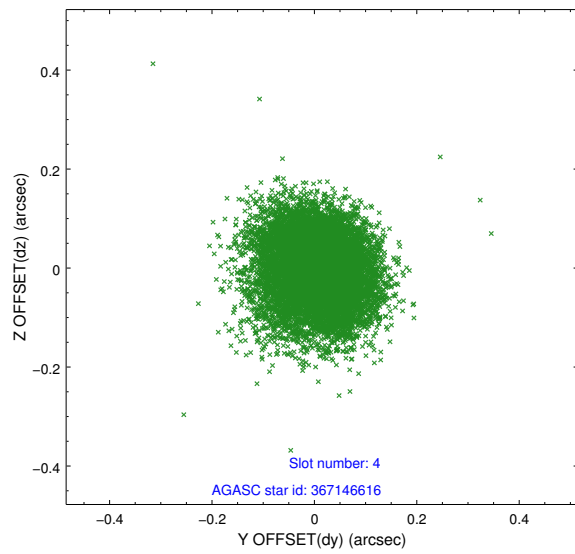
slot	status	id	mag	n_pts	med_dy	med_dz	dr1	dr2	ra	dec	mean_y	mean_z
0	FID	HRC-I-1	7.00	4925	0.011	-0.014	0.008	0.014	0.000000	0.000000	-761.64	-1294.61
1	FID	HRC-I-2	7.04	4925	0.104	-0.074	0.008	0.014	0.000000	0.000000	850.93	-1296.48
2	FID	HRC-I-3	7.09	4925	0.004	-0.001	0.007	0.012	0.000000	0.000000	-1189.99	1009.70
3	GUIDE	367138920	7.74	9849	0.123	0.085	0.057	0.093	11.513485	40.808909	2255.40	1797.80
4	GUIDE	367146616	8.85	9847	0.009	-0.003	0.092	0.147	11.418645	41.190163	862.34	1900.13
5	GUIDE	367148872	7.24	9848	0.039	-0.035	0.072	0.112	10.505940	40.688258	1956.42	-968.64
6	GUIDE	367658664	9.60	9843	-0.039	-0.014	0.112	0.184	10.374070	41.369746	-503.56	-657.24
7	GUIDE	367663272	9.29	9840	-0.133	-0.031	0.091	0.149	10.656279	41.699429	-1444.76	391.95

2.4 Star Slots

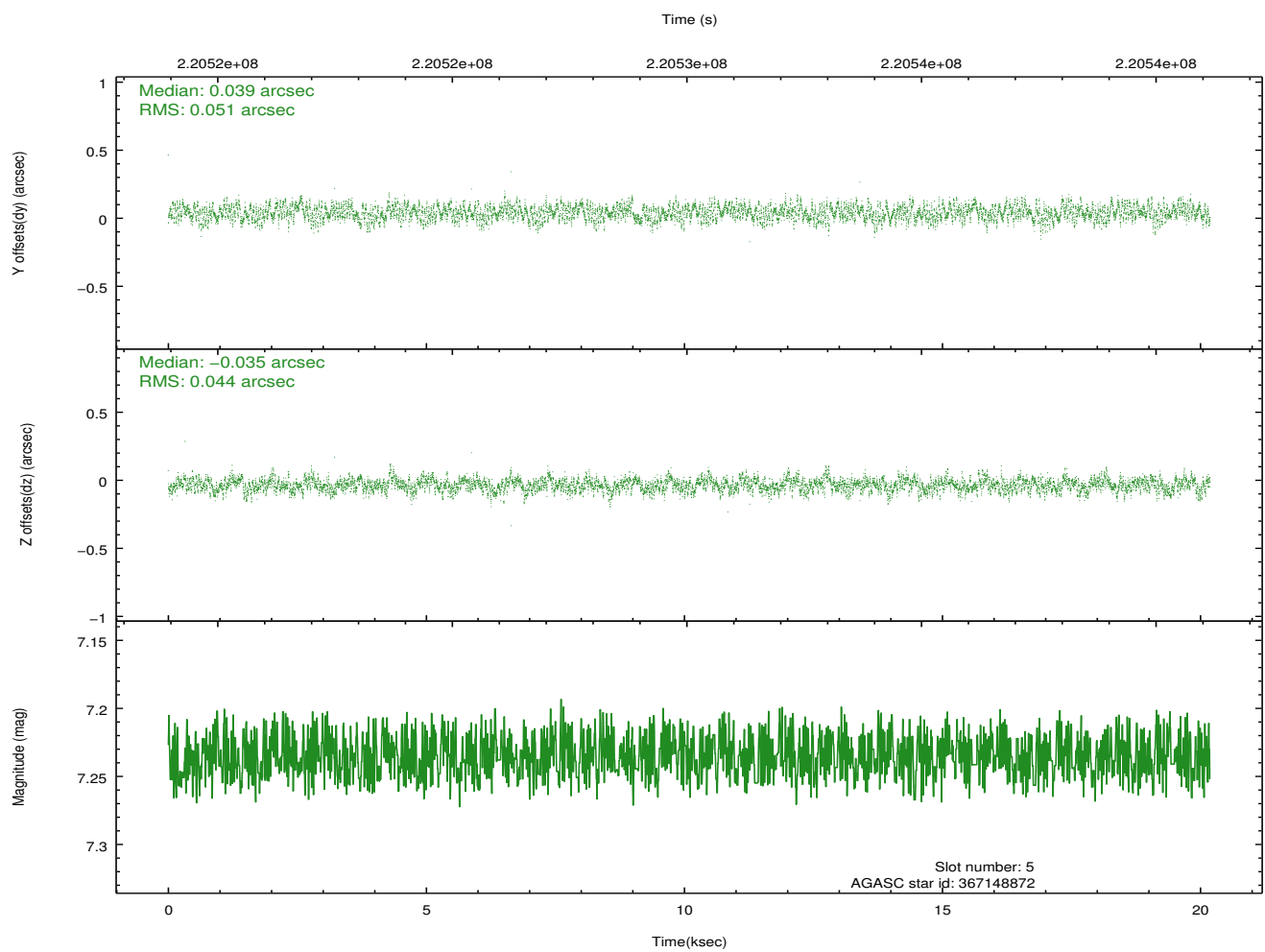
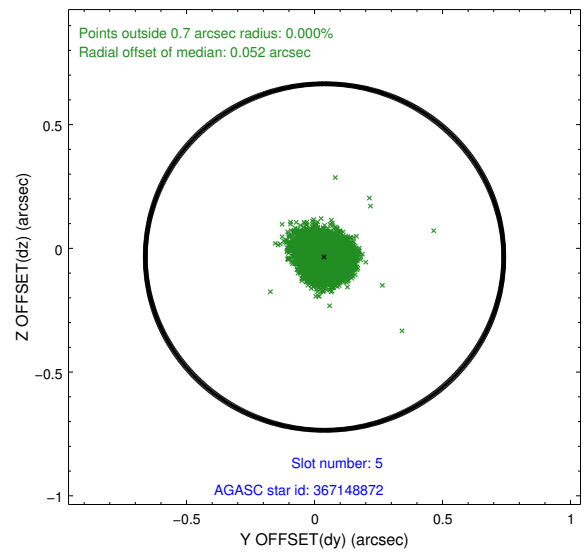
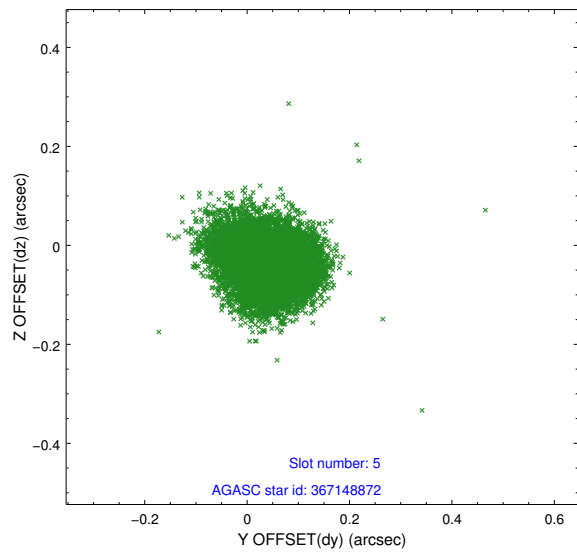
2.4.1 Slot 3



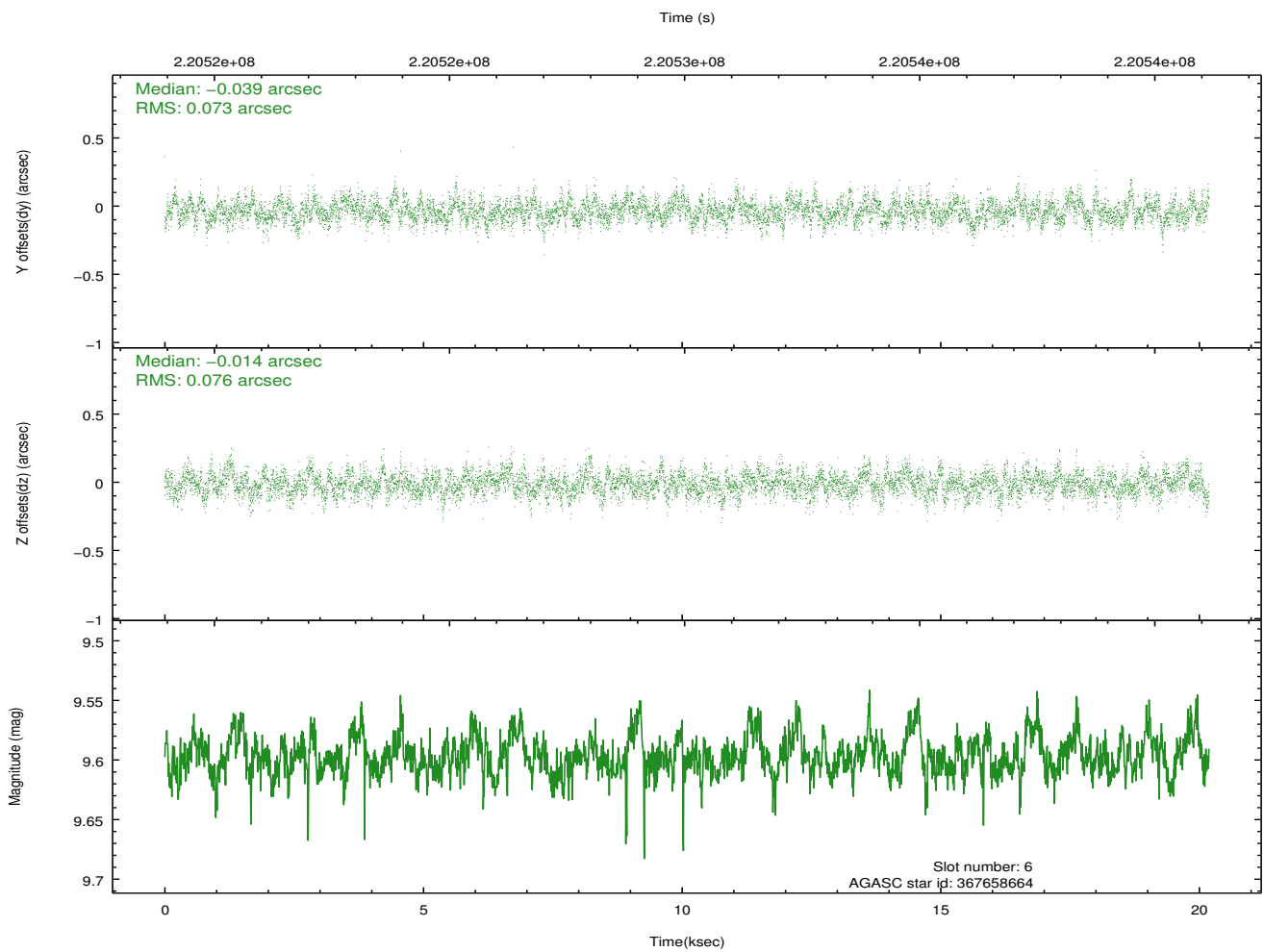
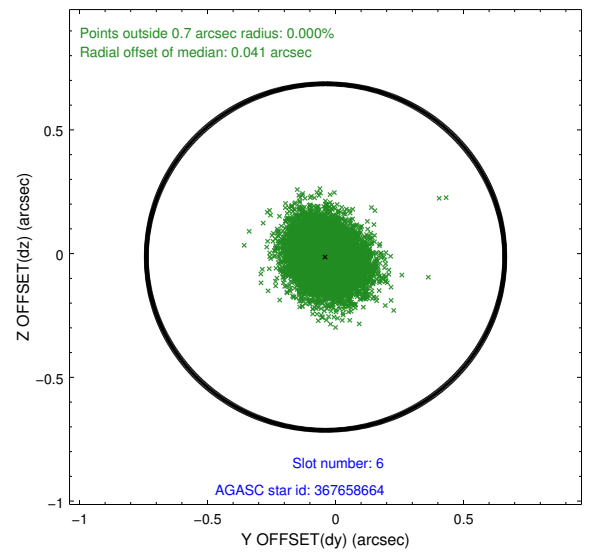
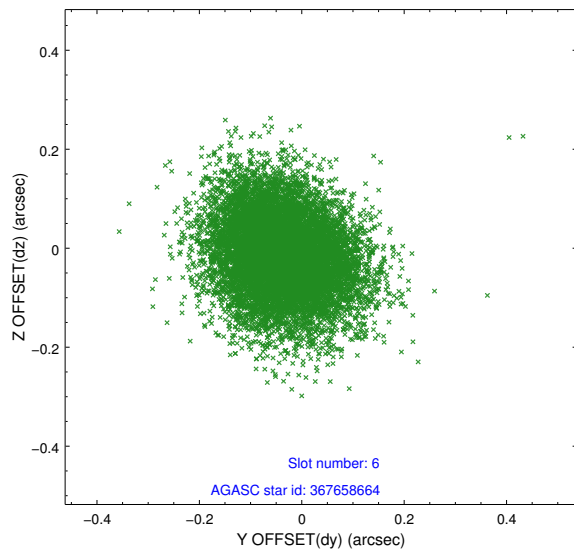
2.4.2 Slot 4



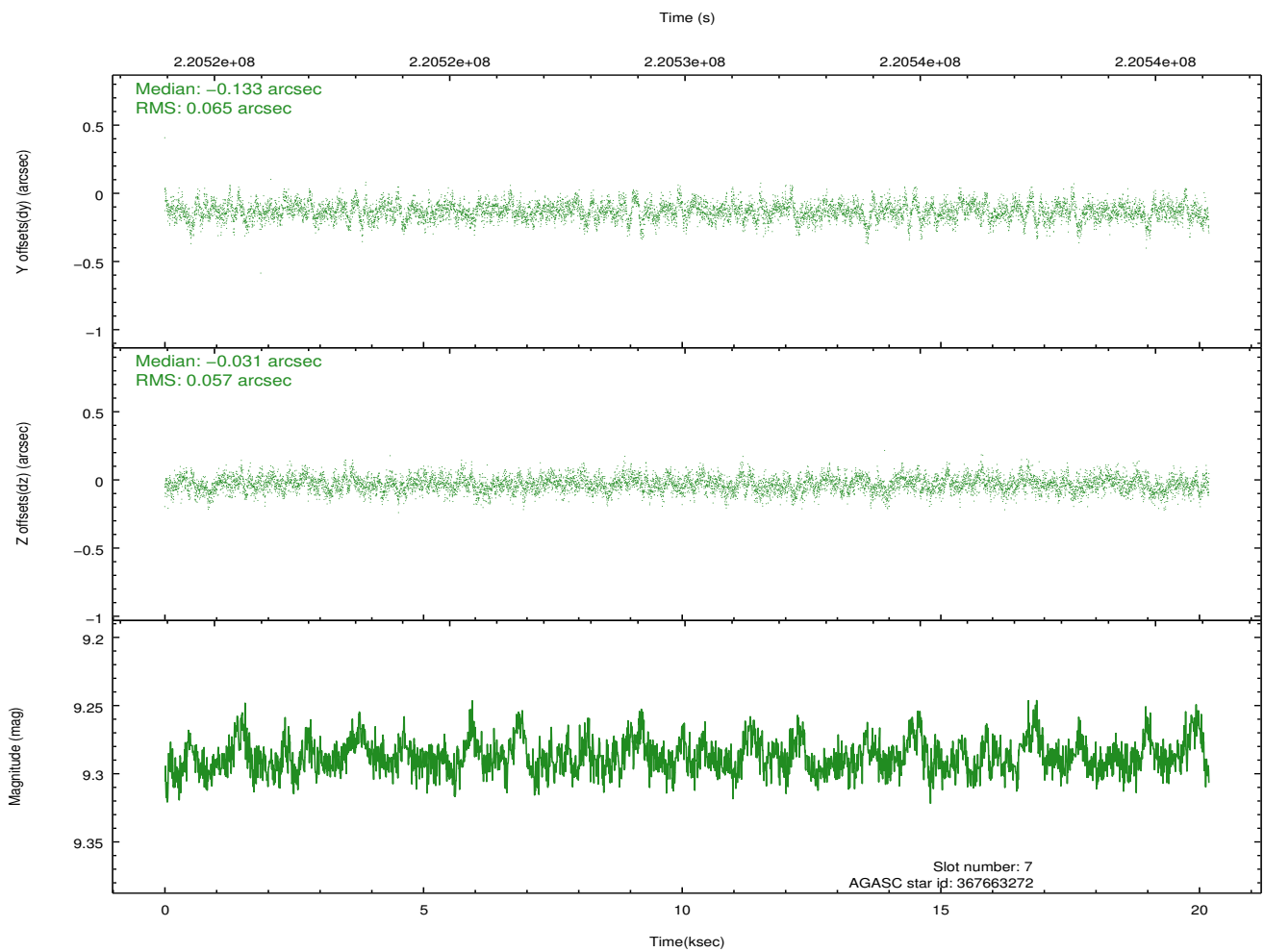
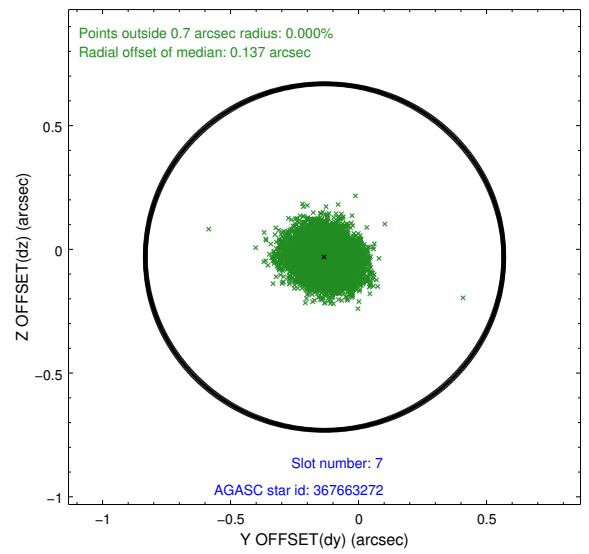
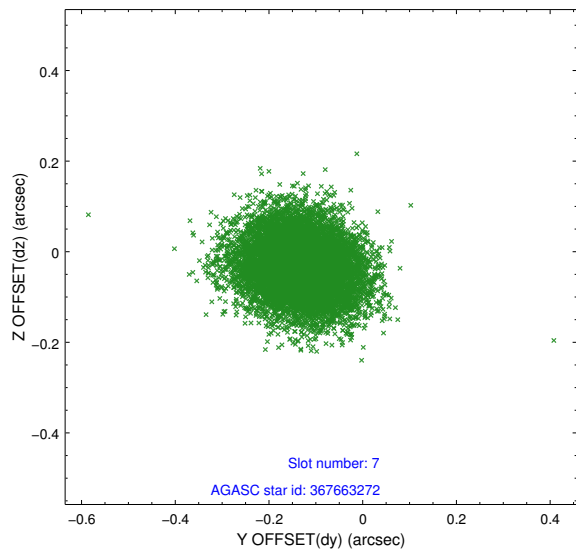
2.4.3 Slot 5



2.4.4 Slot 6

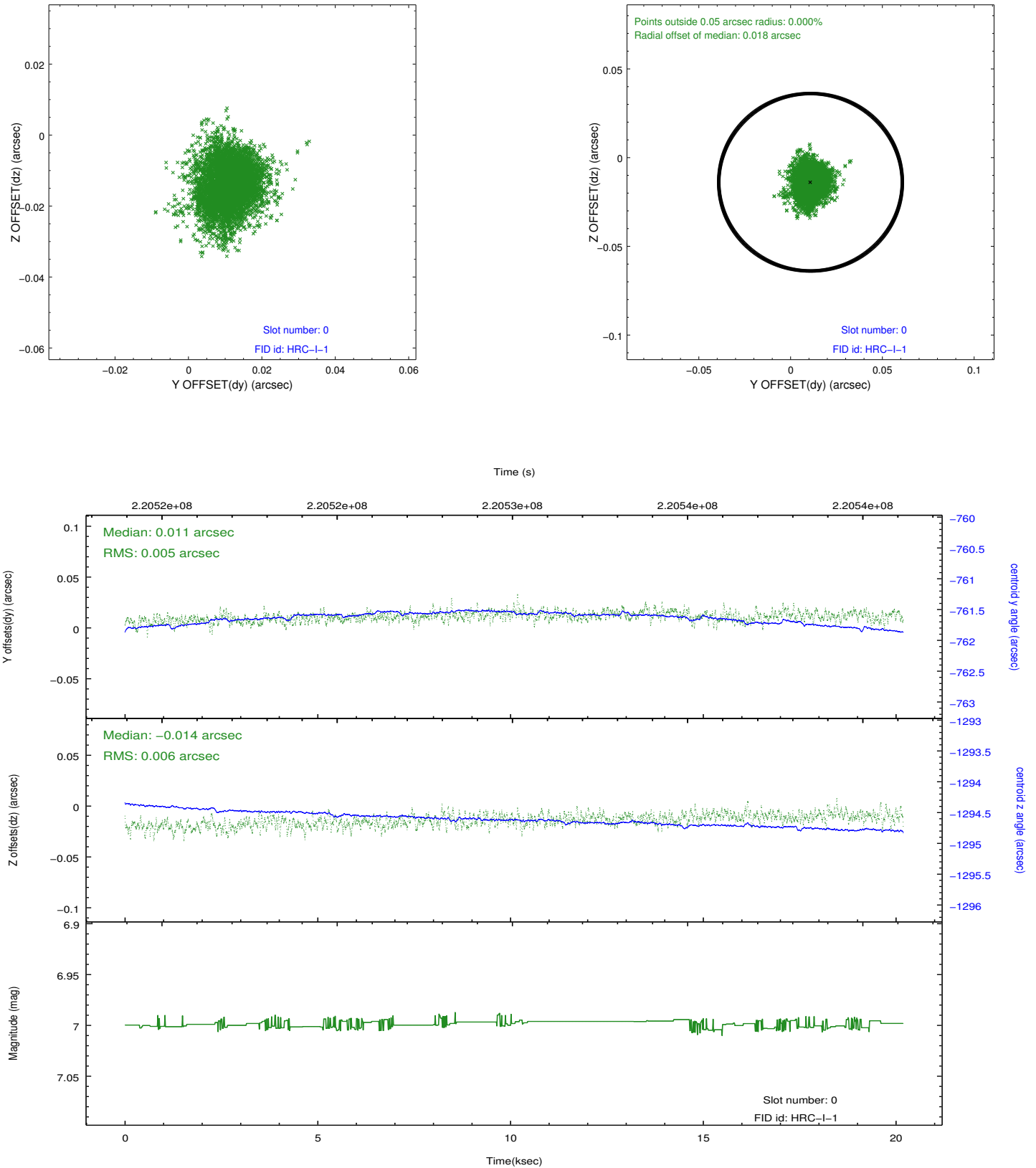


2.4.5 Slot 7

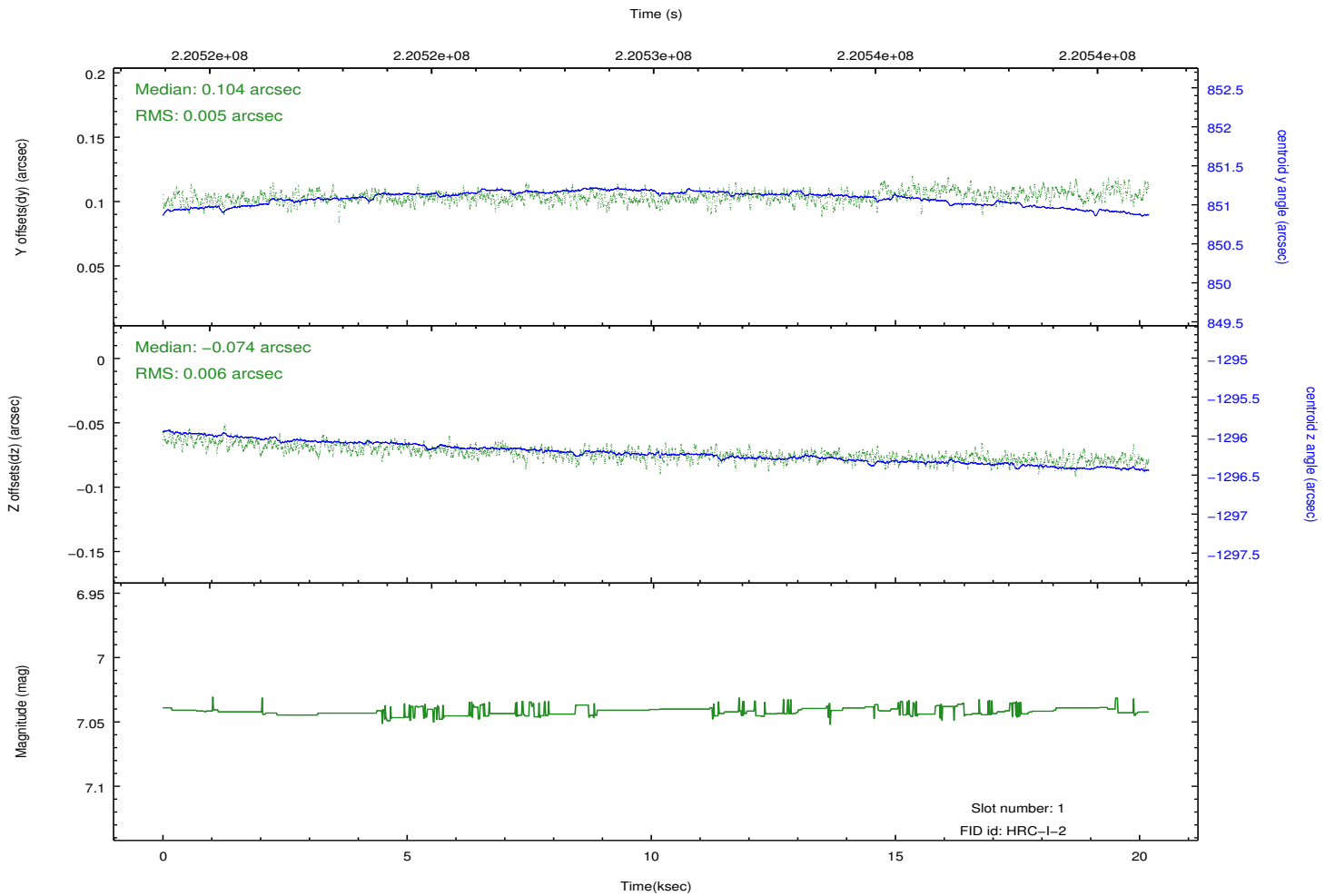
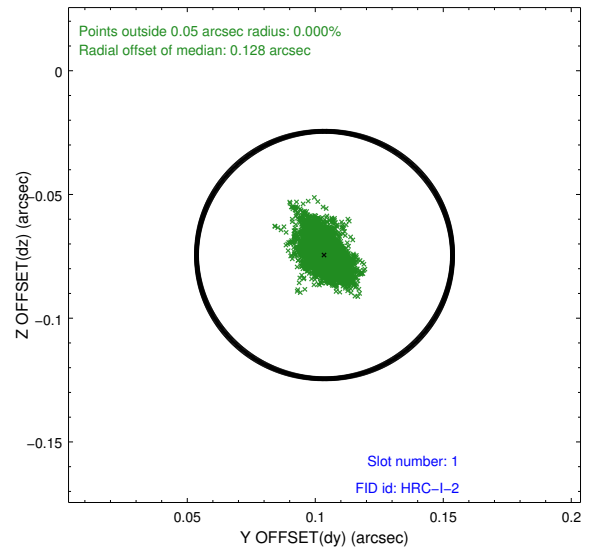
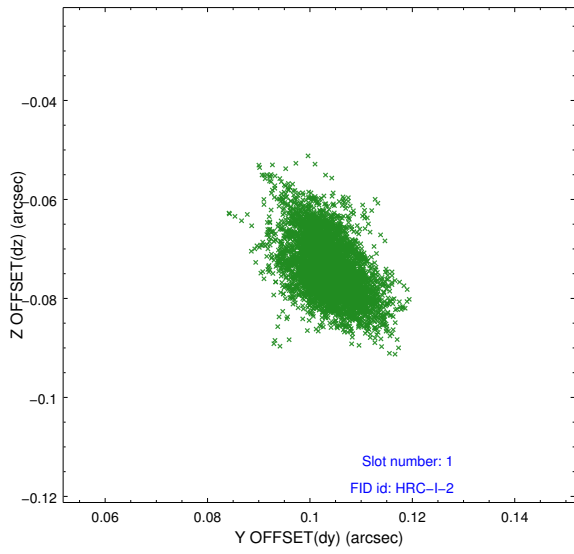


2.5 FID Slots

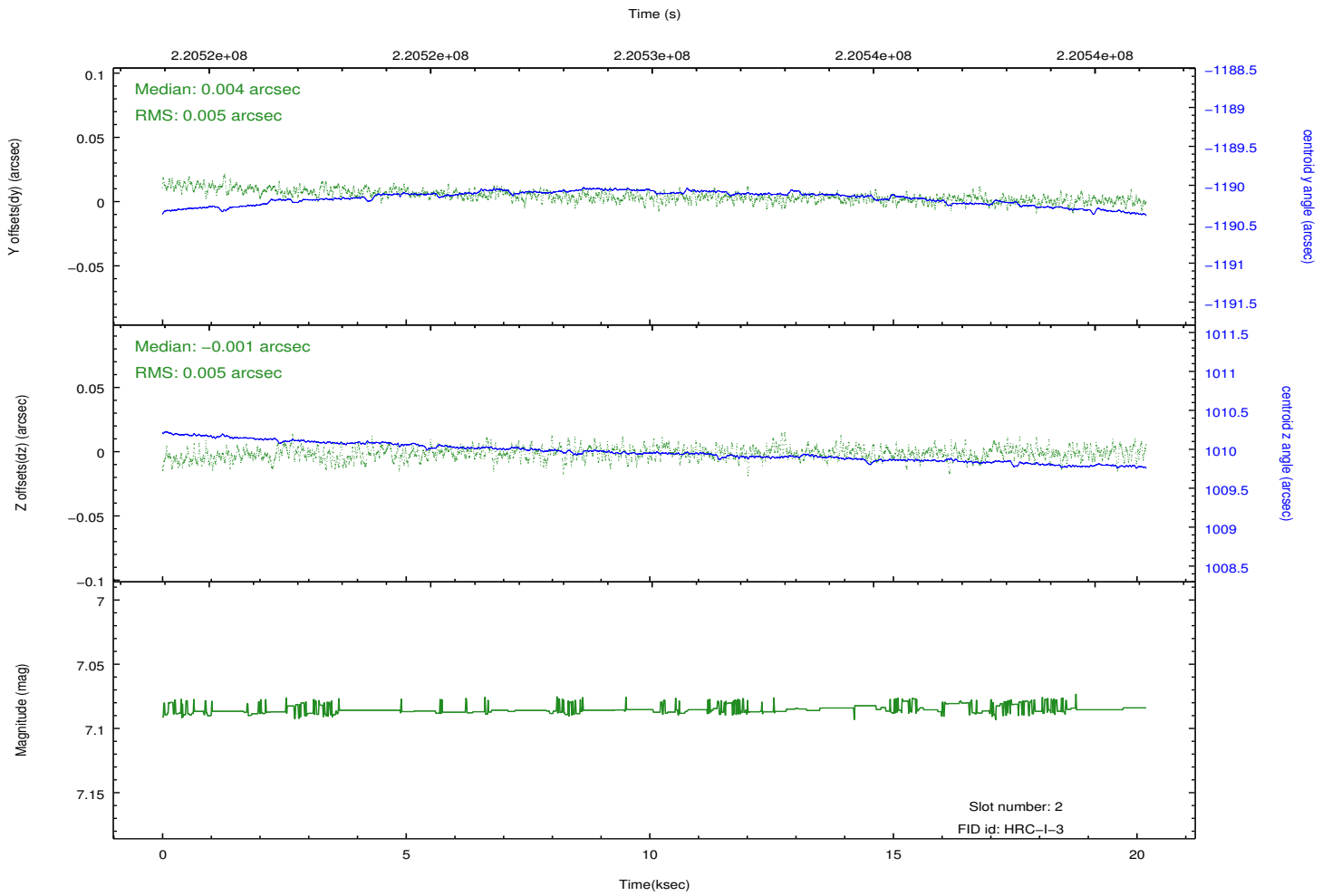
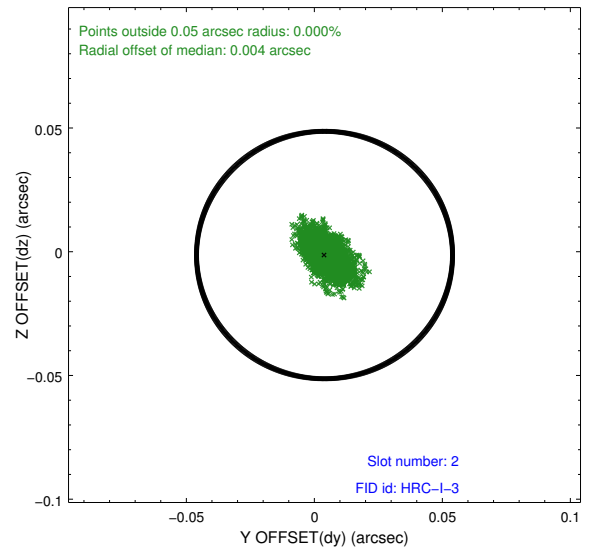
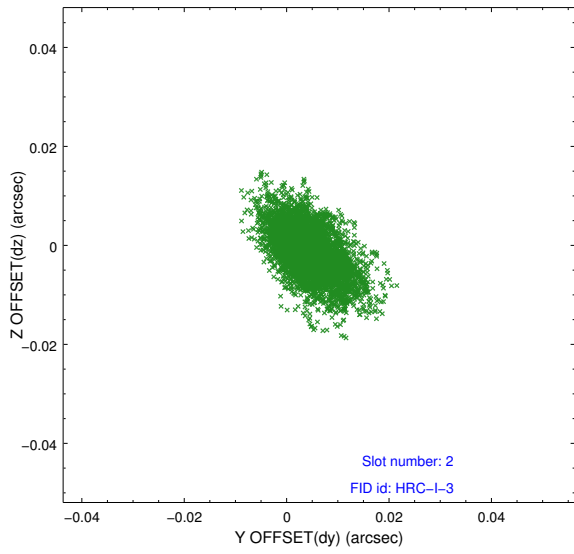
2.5.1 Slot 0



2.5.2 Slot 1



2.5.3 Slot 2



A Summary

A.1 Status

V&V Scientist	Jen Lauer
V&V Date (YYYY-MM-DD)	2013.01.08
V&V Edition	1
V&V Disposition and Status	OK
V&V Charge Time	20.18763

A.2 Comments

Joint Proposal: NRAO