

V&V Reference Report

L2 ASCDS Version : 8.4.3

Observation 6307 - L2 Version 2
Chandra X-Ray Center

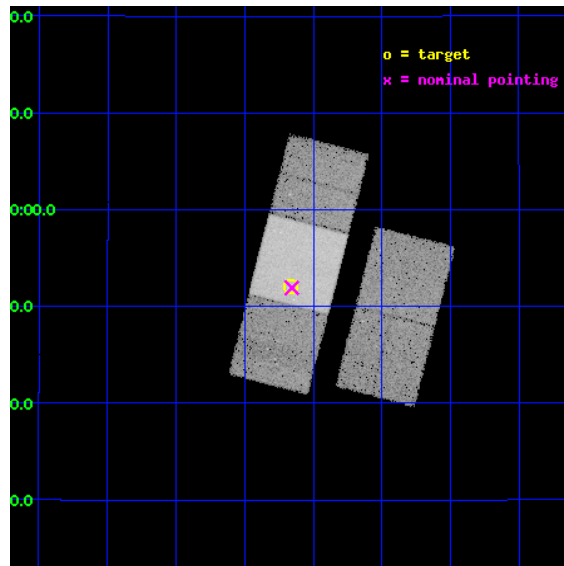
L2 Processing Date : Mar 26 2012

Contents

1	Front	2
2	OBI	3
2.1	OBI	3
2.1.1	Images	3
2.1.2	Bias	3
2.1.3	Parameters	4
2.1.4	Events	4
2.2	Compared Parameters	5
2.3	Aspect	6
2.4	Star Slots	9
2.4.1	Slot 3	9
2.4.2	Slot 4	10
2.4.3	Slot 5	11
2.4.4	Slot 6	12
2.4.5	Slot 7	13
2.5	FID Slots	14
2.5.1	Slot 0	14
2.5.2	Slot 1	15
2.5.3	Slot 2	16
A	Summary	17
A.1	Status	17
A.2	Comments	17

1 Front

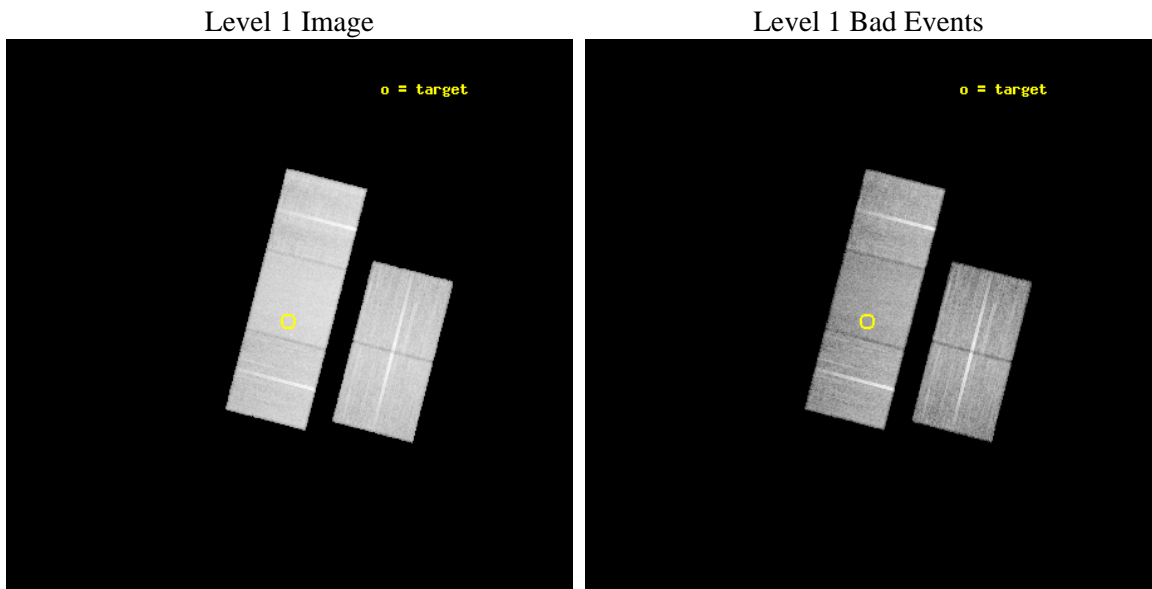
seq_num	500605	Sequence number
obs_id	6307	Observation id
title	Gamma-Ray Bursts from Start to Finish: A Legacy Approach	Proposal
observer	Prof. Shrinivas Kulkarni	Principal investigator
object	GRB 060218	Source name
dtcycle	0	
cycle	P	events from which exps? Prim/Second/Both
ra_targ	50.415417	Observer's specified target RA [deg]
dec_targ	16.867167	Observer's specified target Dec [deg]
ra_nom	50.414055308898	Nominal RA [deg]
dec_nom	16.865535185001	Nominal Dec [deg]
roll_nom	284.46256992768	Nominal Roll [deg]
revision	2	Processing version of data
ontime	20174.758990884	Sum of GTIs [s]
livetime	19911.160912226	Livetime [s]
ontime2	20174.758990884	Sum of GTIs [s]
ontime3	20171.618050605	Sum of GTIs [s]
ontime6	20171.618020624	Sum of GTIs [s]
ontime7	20174.758990884	Sum of GTIs [s]
ontime8	20177.899961174	Sum of GTIs [s]
l2events	169172	Number of level 2 events



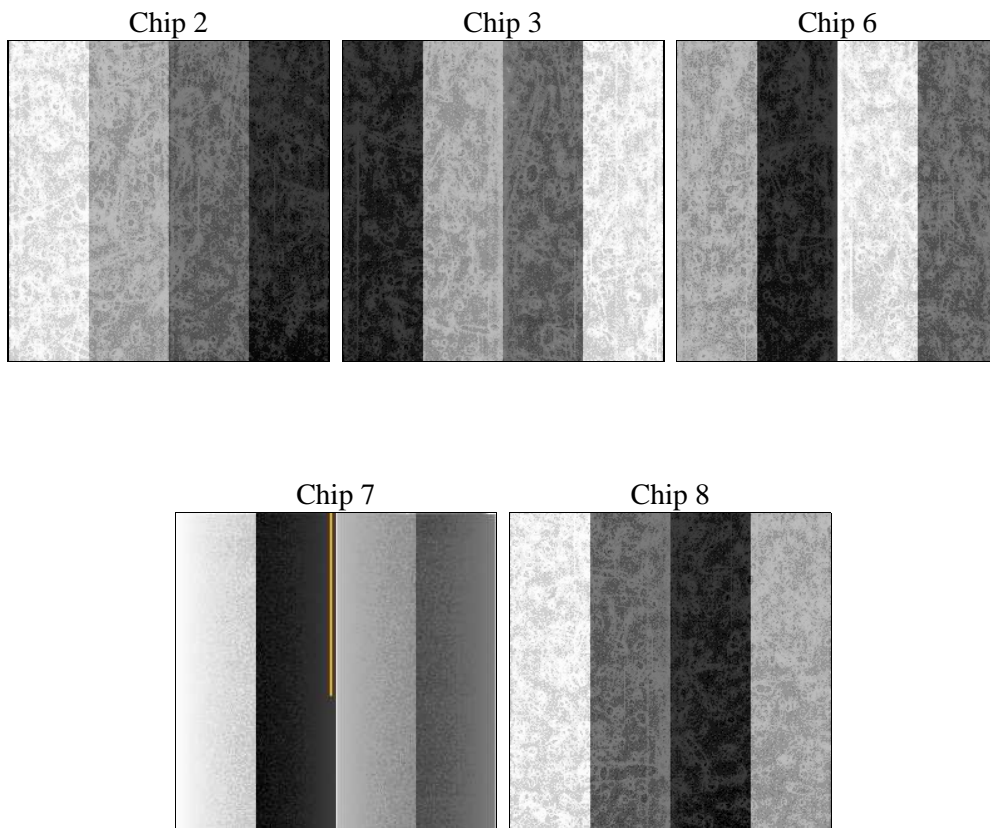
2 OBI

2.1 OBI

2.1.1 Images



2.1.2 Bias



2.1.3 Parameters

obi_num	0	Obi number	sched_exp_time	20000.000000	[s] Scheduled observation exposure time
ascdsver	8.4.3	Processing system revision	ontime	20174.758990884	Sum of GTIs [s]
caldsver	4.4.8	 	ontime2	20174.758990884	Sum of GTIs [s]
date	2012-03-26T06:47:59	Date and time of file creation	ontime3	20171.618050605	Sum of GTIs [s]
revision	2	Processing version of data	ontime6	20171.618020624	Sum of GTIs [s]
			ontime7	20174.758990884	Sum of GTIs [s]
			ontime8	20177.899961174	Sum of GTIs [s]
			l1events	1031940	Number of level 1 events

2.1.4 Events

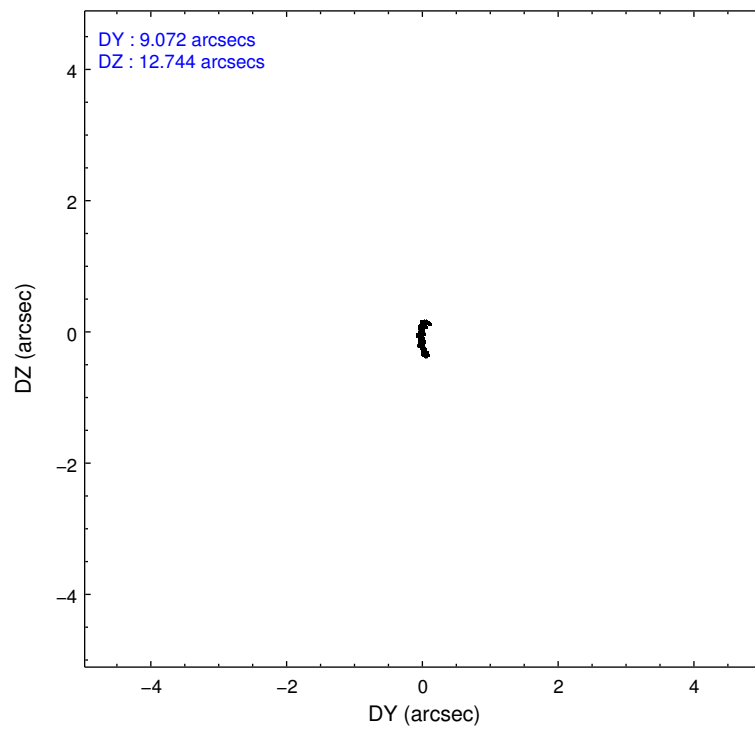
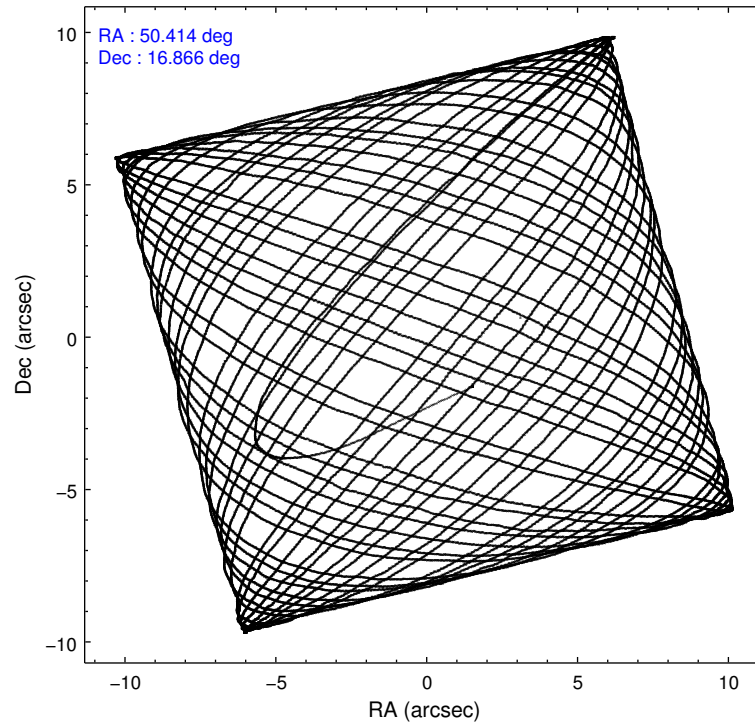
	ccd 2	ccd 3	ccd 6	ccd 7	ccd 8
level 1 events	182971	178094	186592	251075	233208
rejected events	162512	157879	166011	153547	185022
rejected %	88%	88%	88%	61%	79%

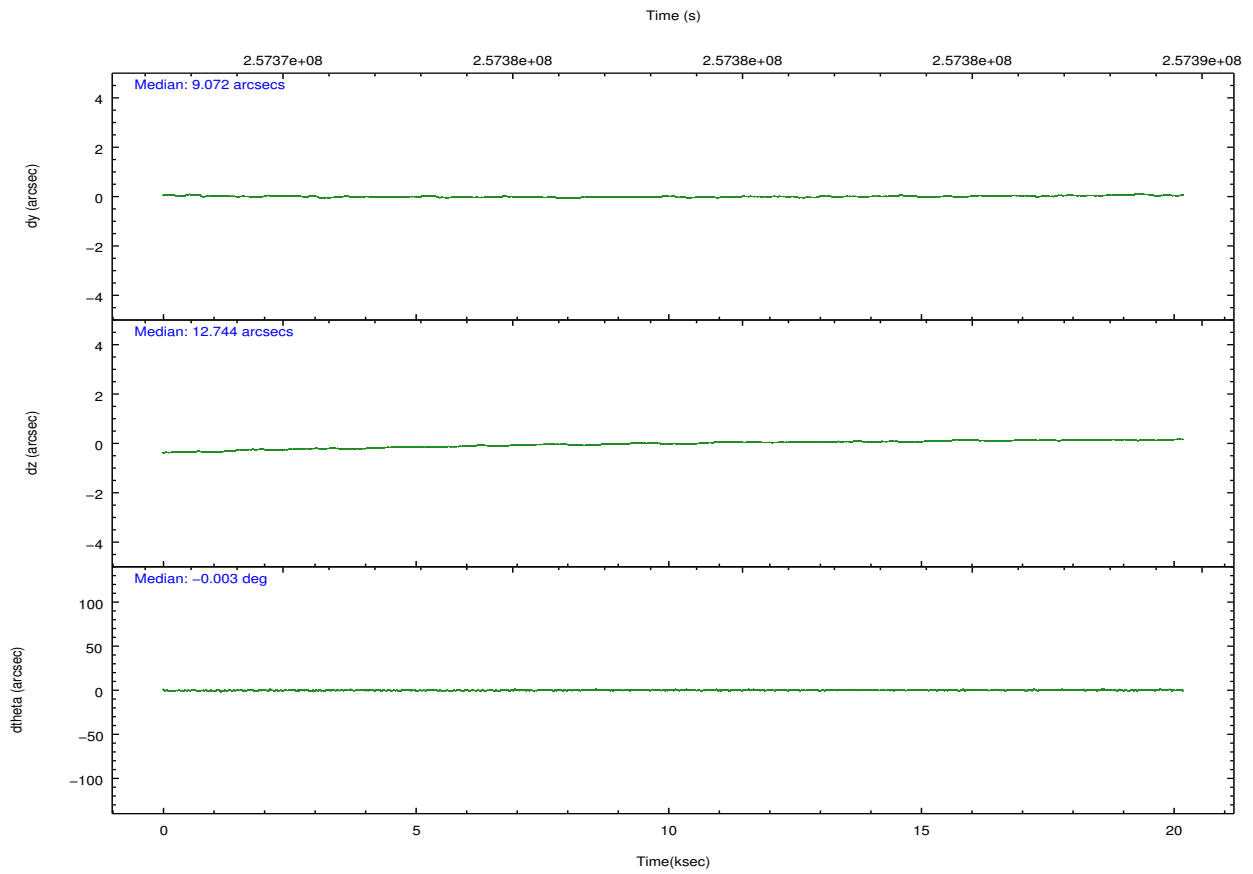
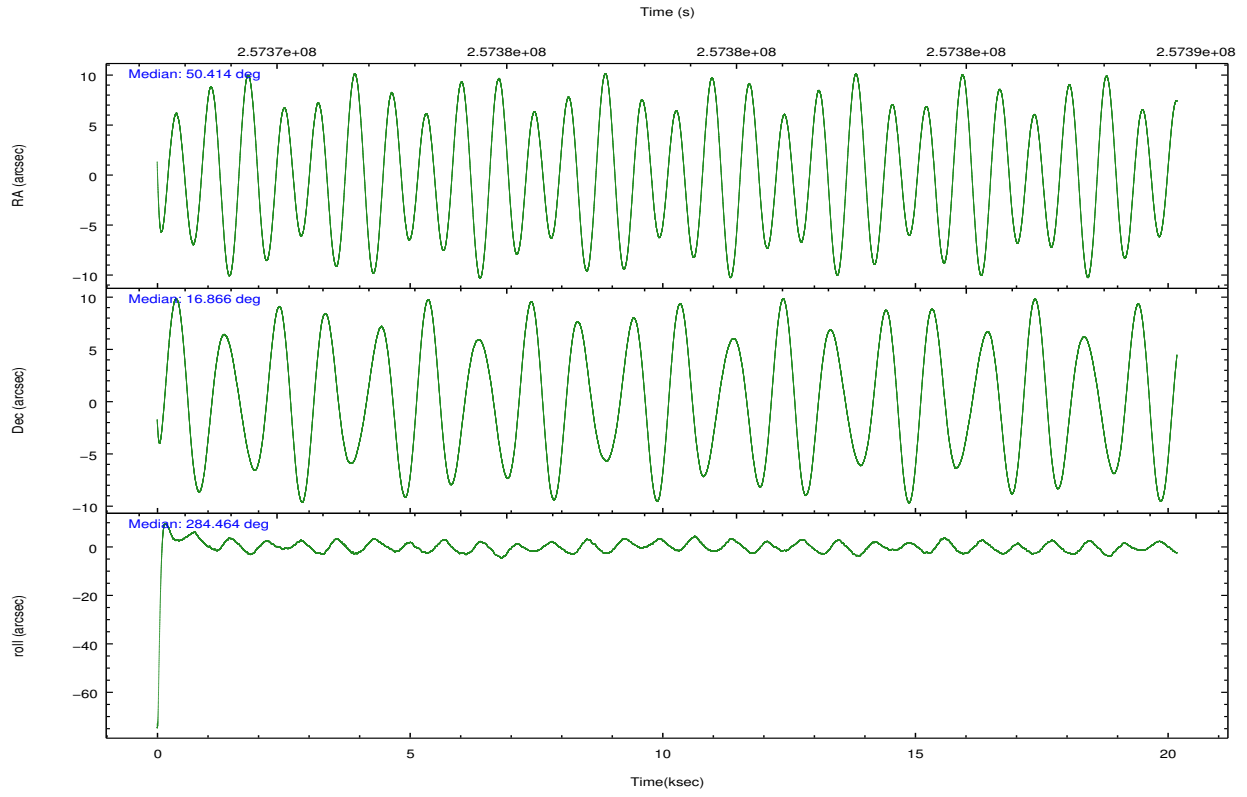
	ccd 2	ccd 3	ccd 6	ccd 7	ccd 8
grade 0 events	9630	9187	8302	8963	15430
	5%	5%	4%	3%	6%
grade 1 events	121	111	101	231	150
	0%	0%	0%	0%	0%
grade 2 events	4385	4062	4629	20521	11530
	2%	2%	2%	8%	4%
grade 3 events	1939	2100	2079	8905	5278
	1%	1%	1%	3%	2%
grade 4 events	2037	2072	2108	8871	4874
	1%	1%	1%	3%	2%
grade 5 events	6930	8170	8676	23769	11370
	3%	4%	4%	9%	4%
grade 6 events	3581	3860	4560	55565	13768
	1%	2%	2%	22%	5%
grade 7 events	154348	148532	156137	124250	170808
	84%	83%	83%	49%	73%

2.2 Compared Parameters

Parameter	Planned	Actual	Parameter	Planned	Actual
Instrument	ACIS	ACIS	Obspar format version number	7	7
Detector	ACIS-23678	ACIS-23678	Obspar file type	PREDICTED	ACTUAL
Grating	NONE	NONE	Obspar update status	NONE	UPDATED
Data mode	VFAINT	VFAINT	Number of optional ACIS chips dropped	0	0
Observation mode	POINTING	POINTING	On-chip summing requested	N	N
[deg] Pointing RA	50.393849	50.41405530889801	Subarray requested	NONE	NONE
[deg] Pointing Dec	16.884716	16.86553518500134	Alternating exposures requested	N	N
[deg] Pointing Roll	284.311865	284.4625699276758	[s] Primary exposure time	0.000000	3.1
[mm] SIM focus pos	-0.684267	-0.6828225247311905			
[mm] SIM defocus	0	0.001444936568705701			
[mm] SIM translation stage pos	-190.132523	-190.1400660498719			
[mm] SIM translation stage offset	0	0.00754346686406393			
[s] Observation start time (MET)	257368576.184000	257366896.85606			
Observation start date	2006-02-26T19:15:11	2006-02-26T18:48:16			
[s] Observation end time (MET)	257388576.184000	257389412.0071			
Observation end date	2006-02-27T00:48:31	2006-02-27T01:03:32			
Read mode	TIMED	TIMED			

2.3 Aspect



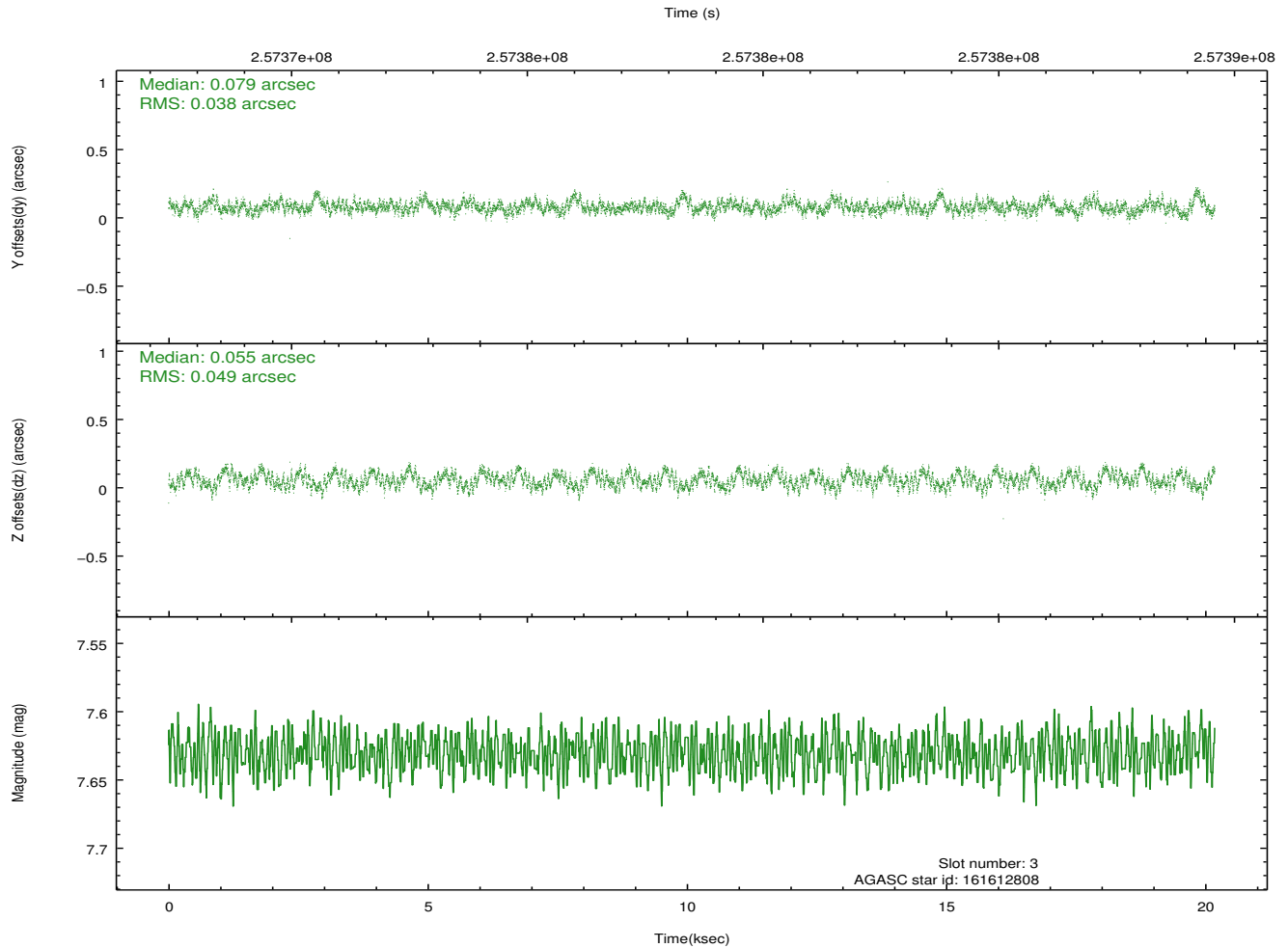
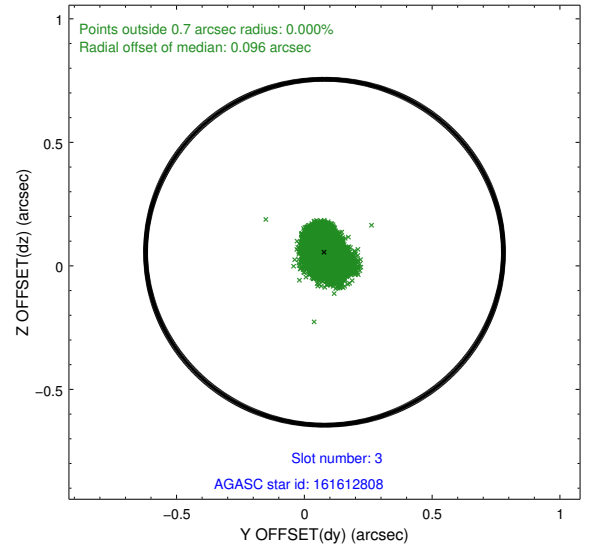
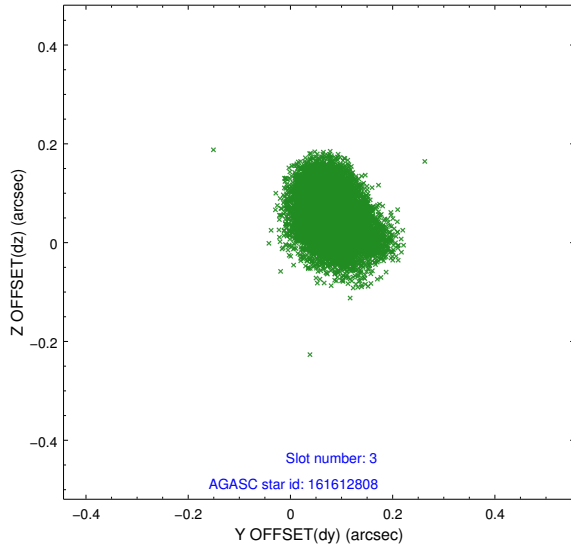


Slot Statistics

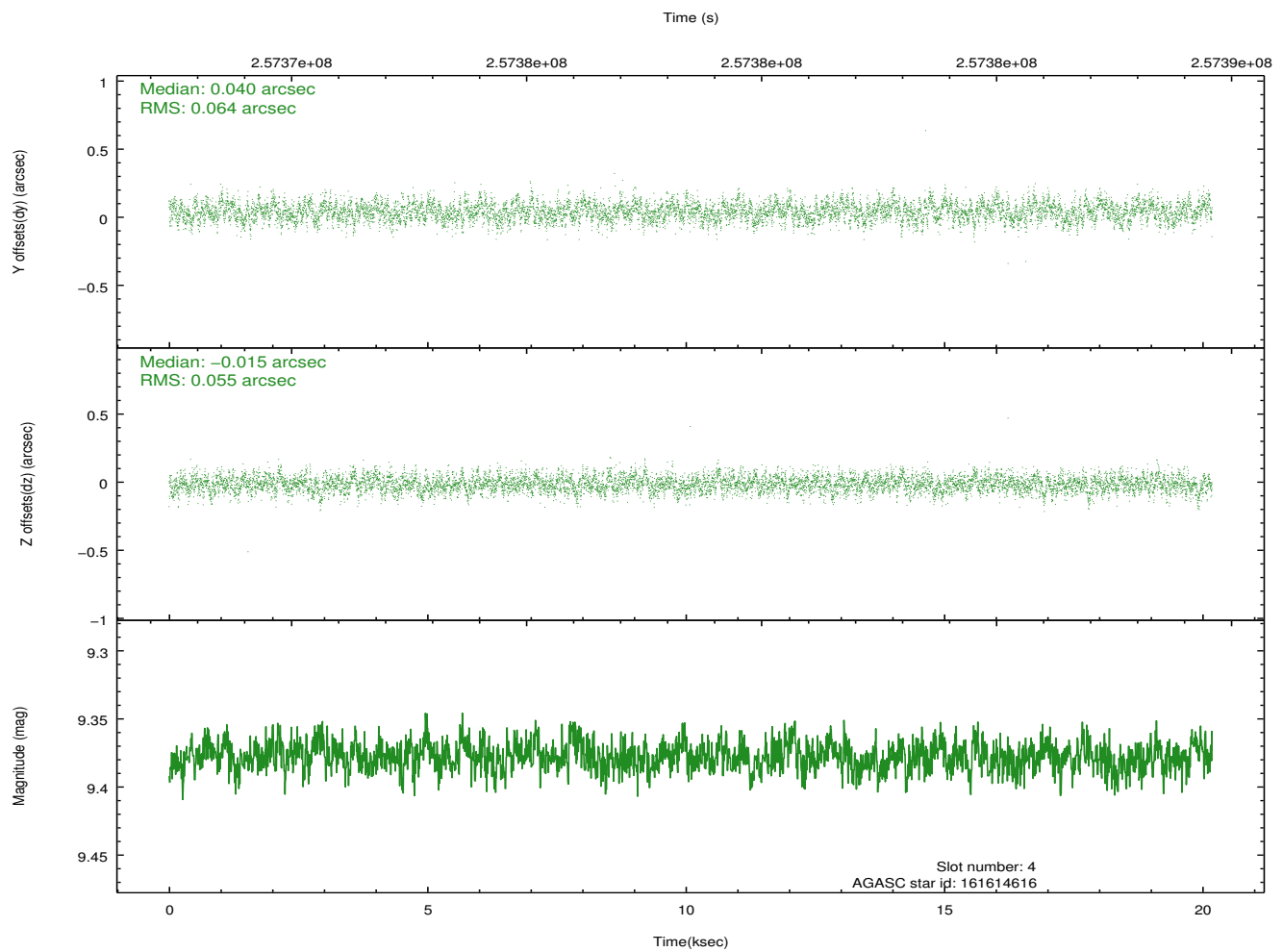
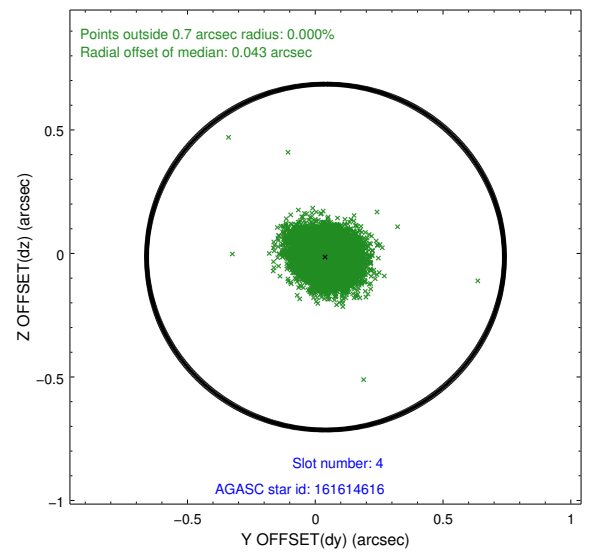
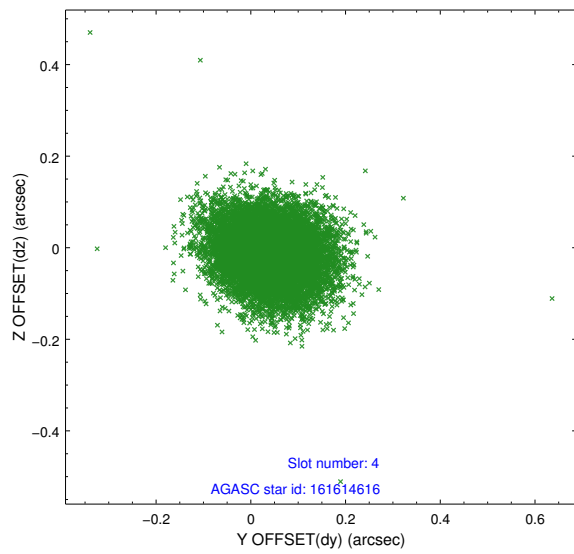
slot	status	id	mag	n_pts	med_dy	med_dz	dr1	dr2	ra	dec	mean_y	mean_z
0	FID	ACIS-S-2	7.11	4922	-0.011	-0.045	0.008	0.013	0.000000	0.000000	-761.91	-1734.06
1	FID	ACIS-S-4	7.20	4922	0.128	0.018	0.005	0.010	0.000000	0.000000	2151.44	174.26
2	FID	ACIS-S-5	7.23	4922	-0.148	0.036	0.007	0.012	0.000000	0.000000	-1814.63	168.20
3	GUIDE	161612808	7.63	9844	0.079	0.055	0.067	0.105	50.828870	16.565729	1482.70	1171.33
4	GUIDE	161614616	9.38	9841	0.040	-0.015	0.090	0.145	50.135712	16.332986	1704.17	-1354.69
5	GUIDE	161616896	8.99	9839	0.115	0.003	0.076	0.126	50.723185	16.359747	2112.38	635.23
6	GUIDE	162136352	9.21	9833	-0.202	-0.010	0.110	0.169	50.340715	17.255337	-1337.53	153.18
7	GUIDE	162138640	8.92	9836	-0.035	-0.041	0.073	0.121	50.402579	16.915943	-101.27	57.16

2.4 Star Slots

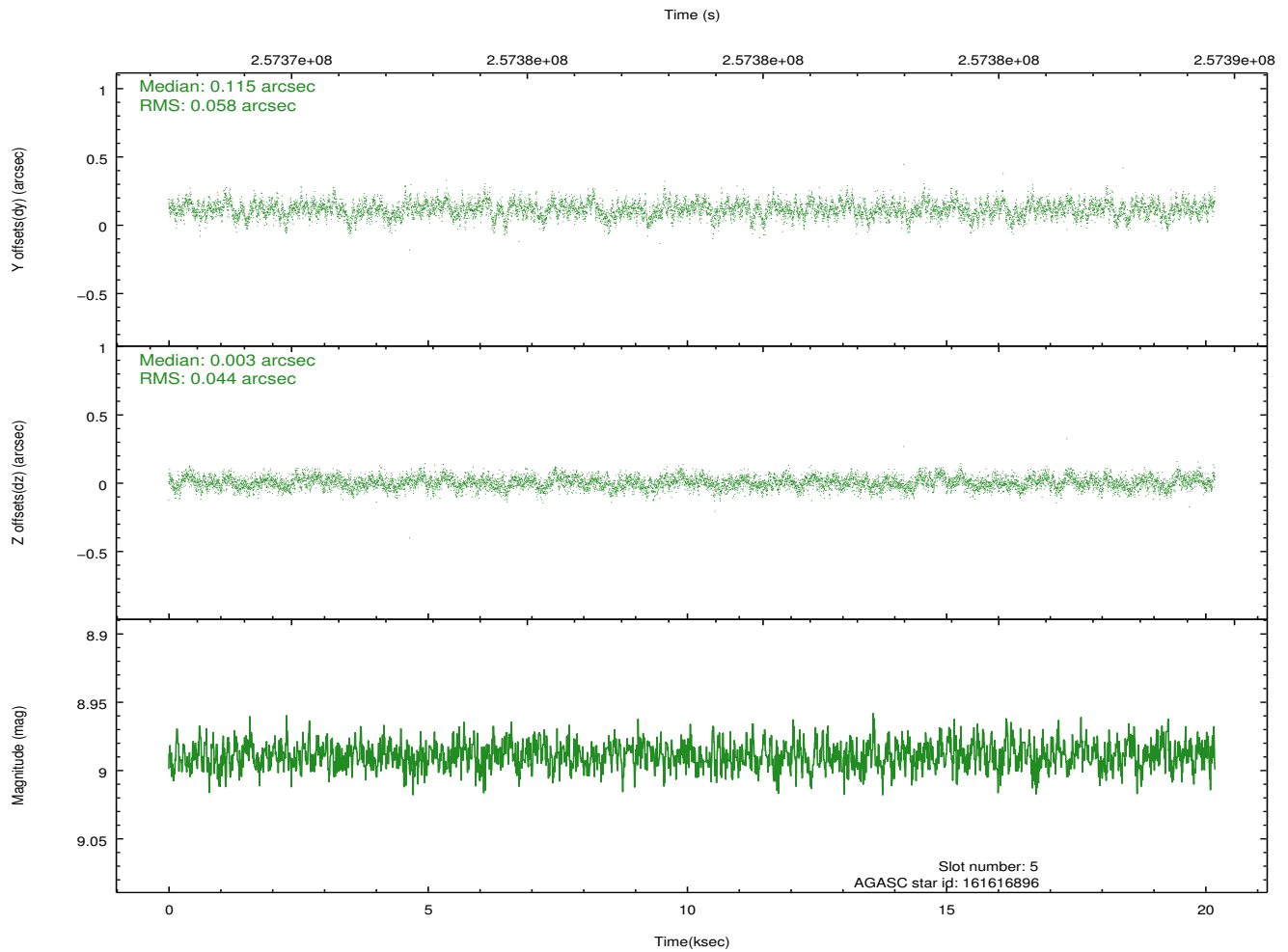
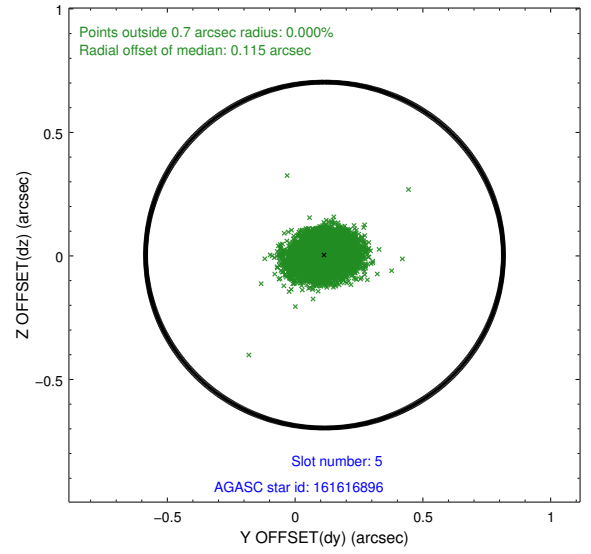
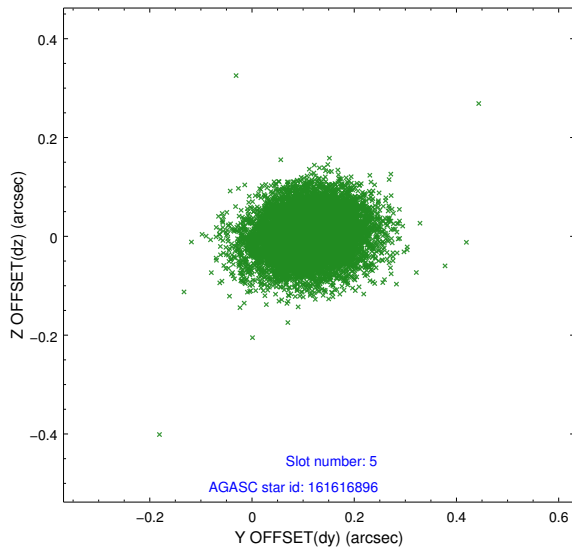
2.4.1 Slot 3



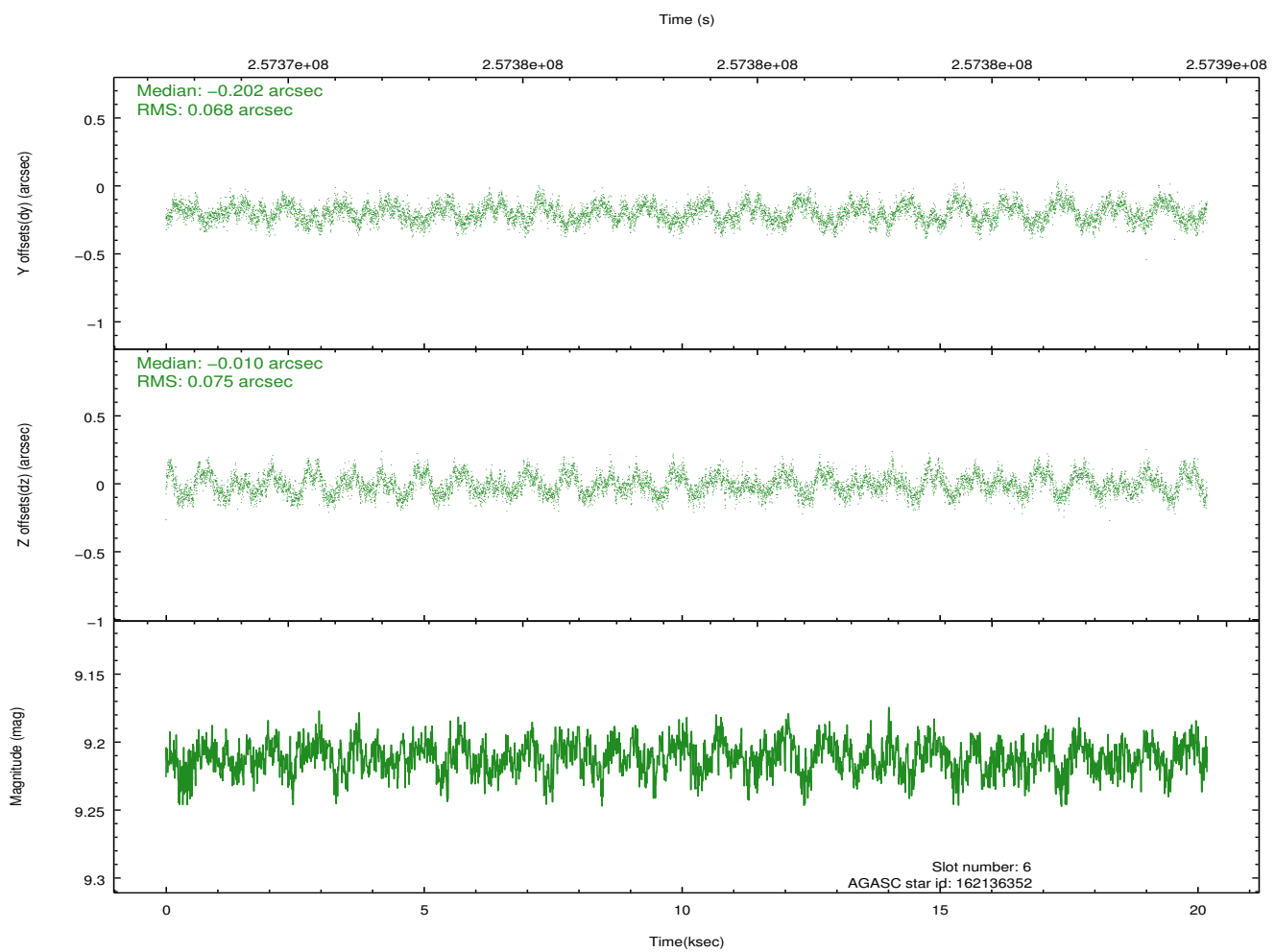
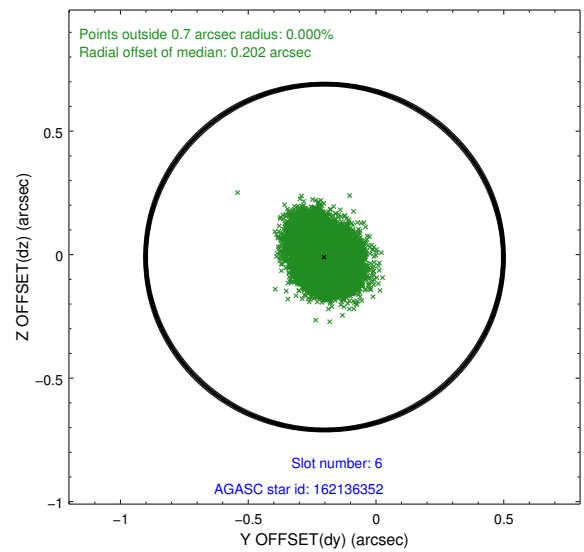
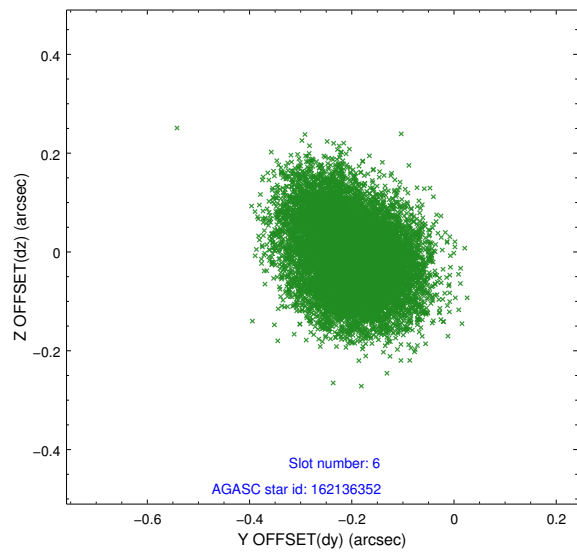
2.4.2 Slot 4



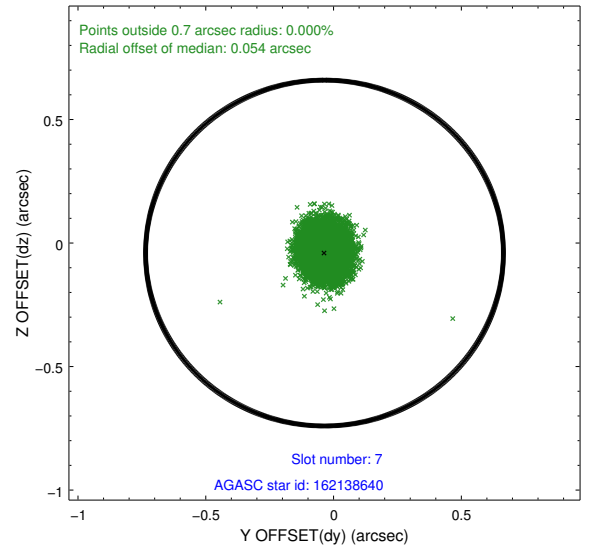
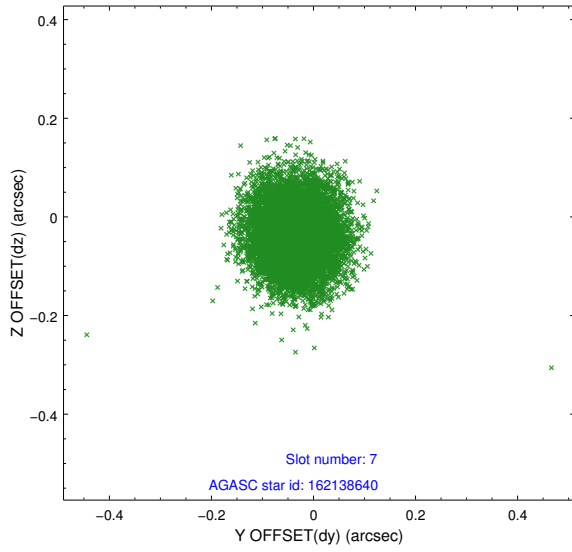
2.4.3 Slot 5



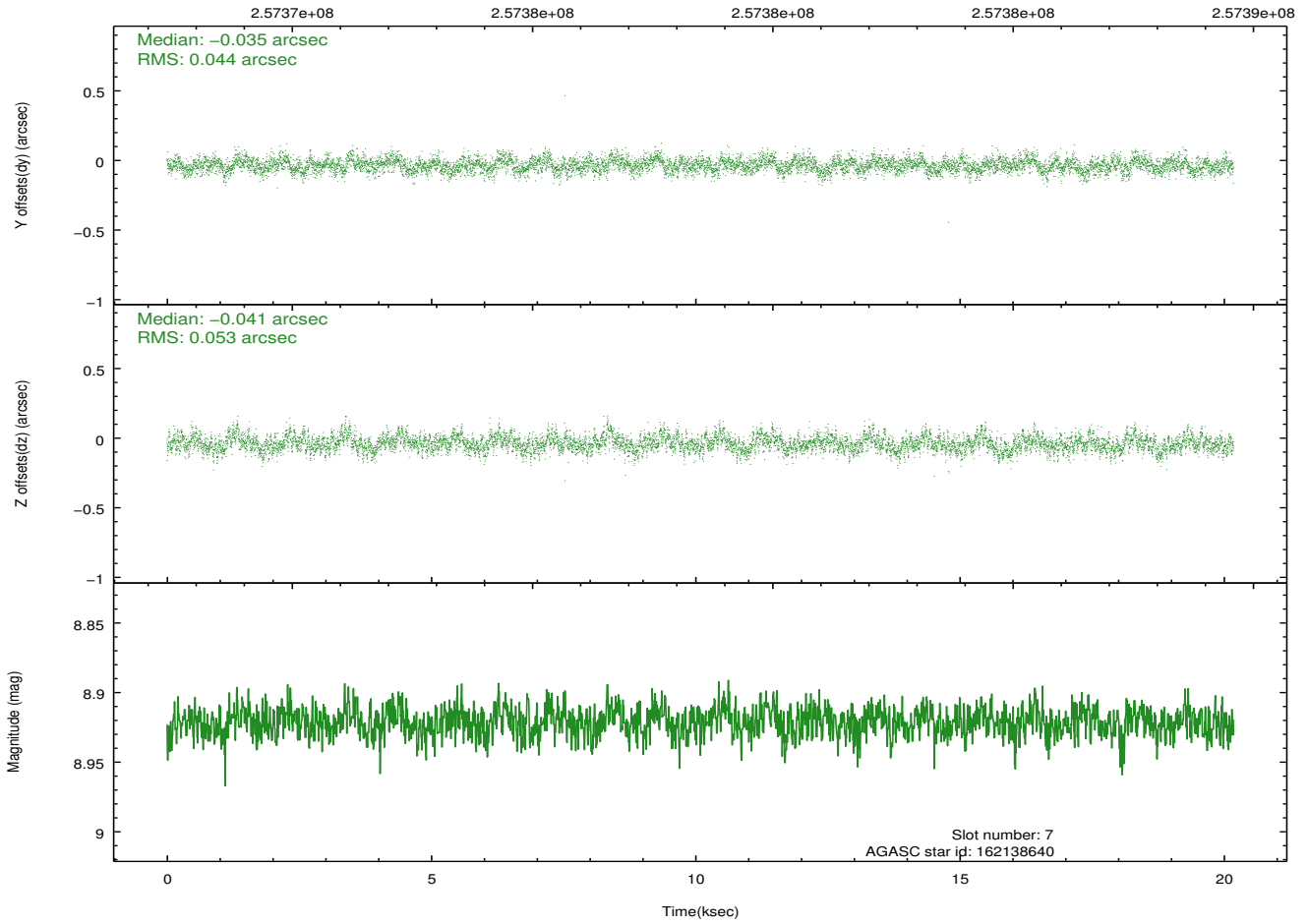
2.4.4 Slot 6



2.4.5 Slot 7

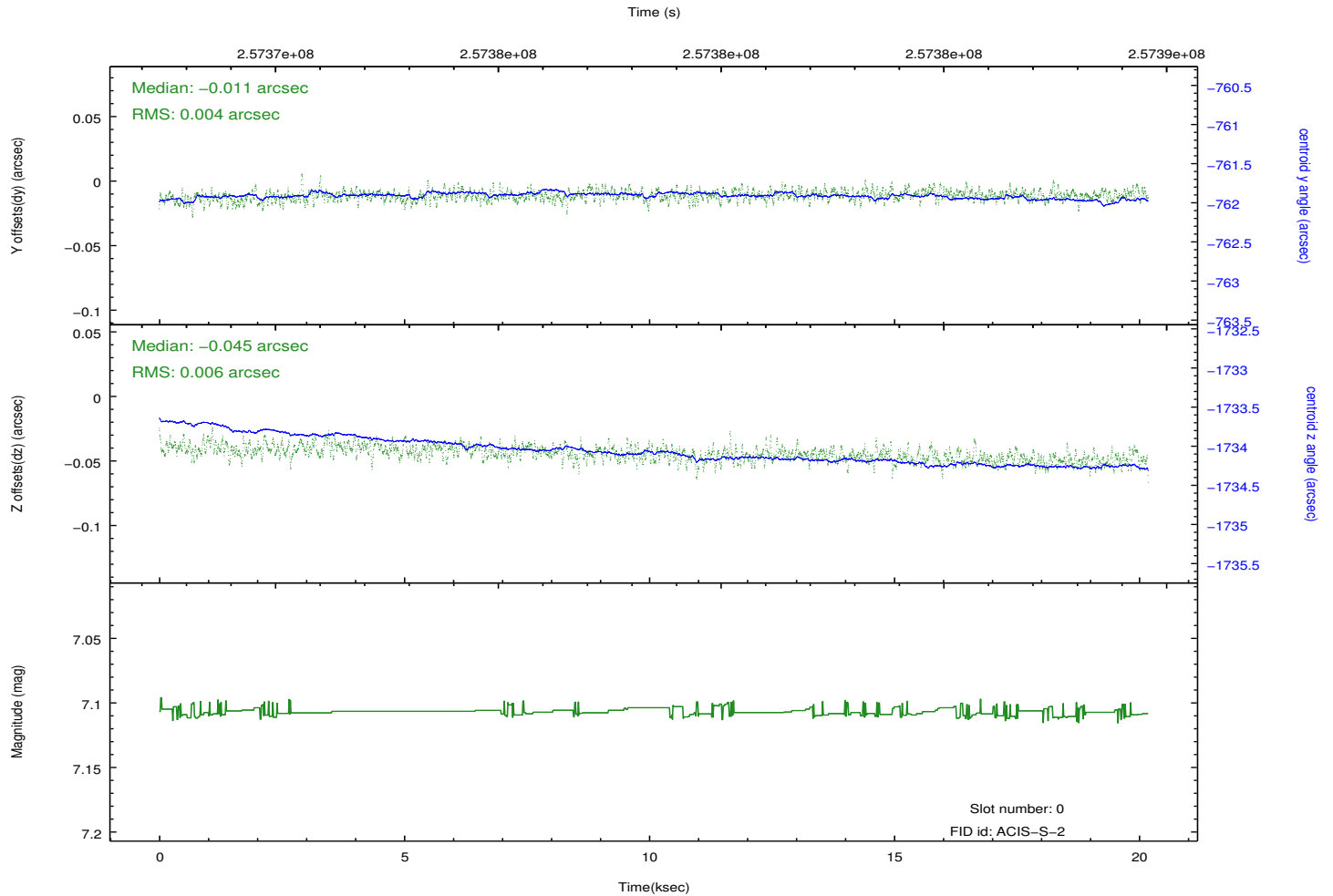
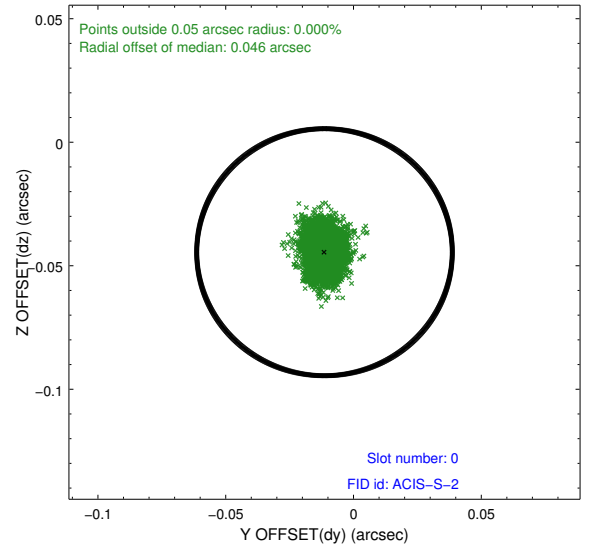
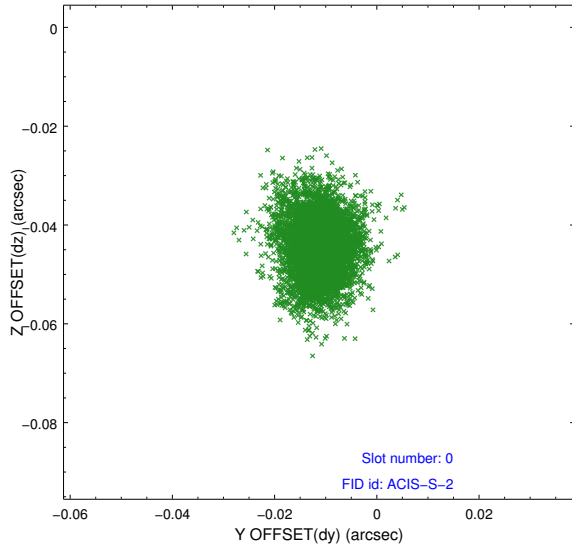


Time (s)

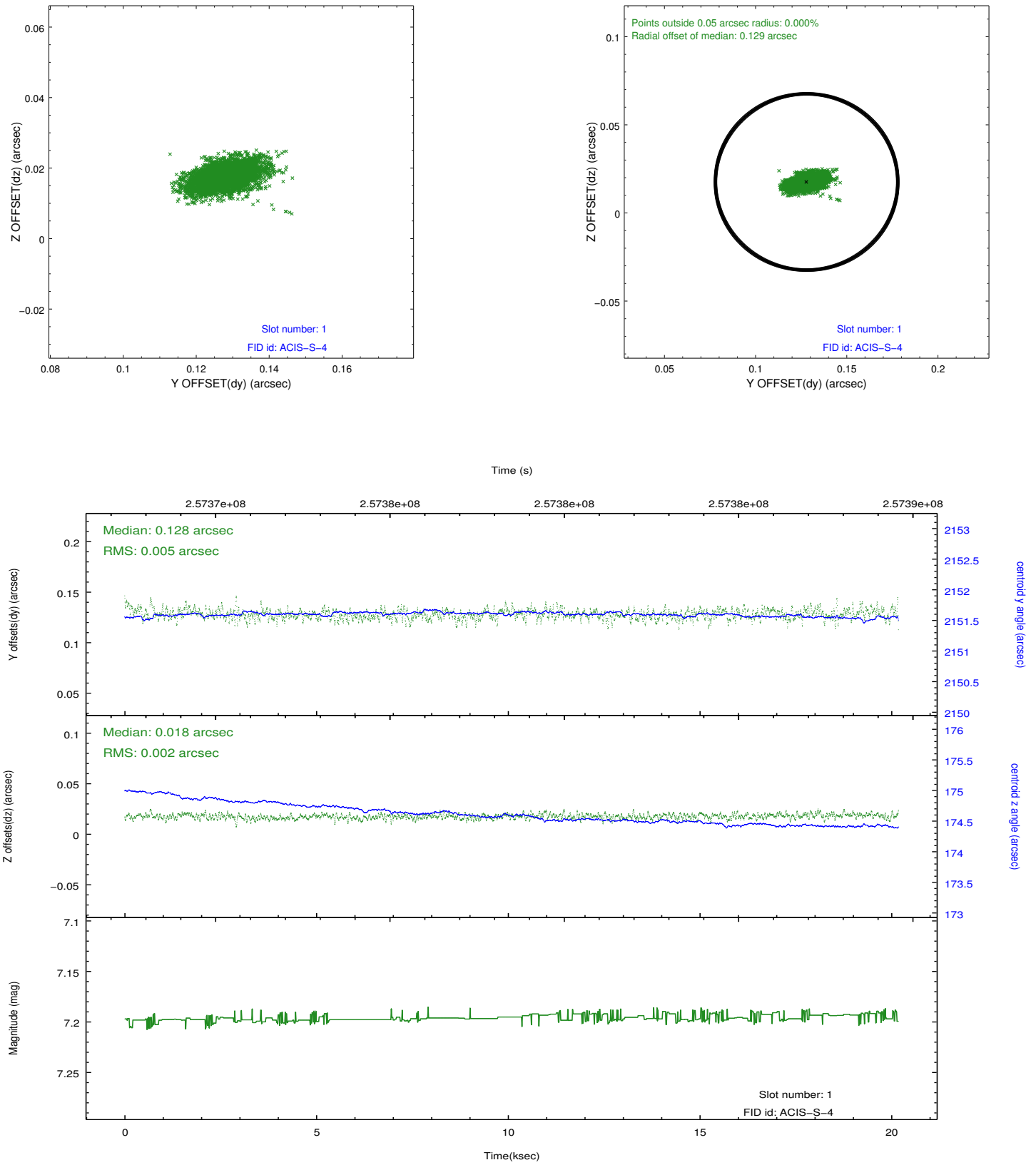


2.5 FID Slots

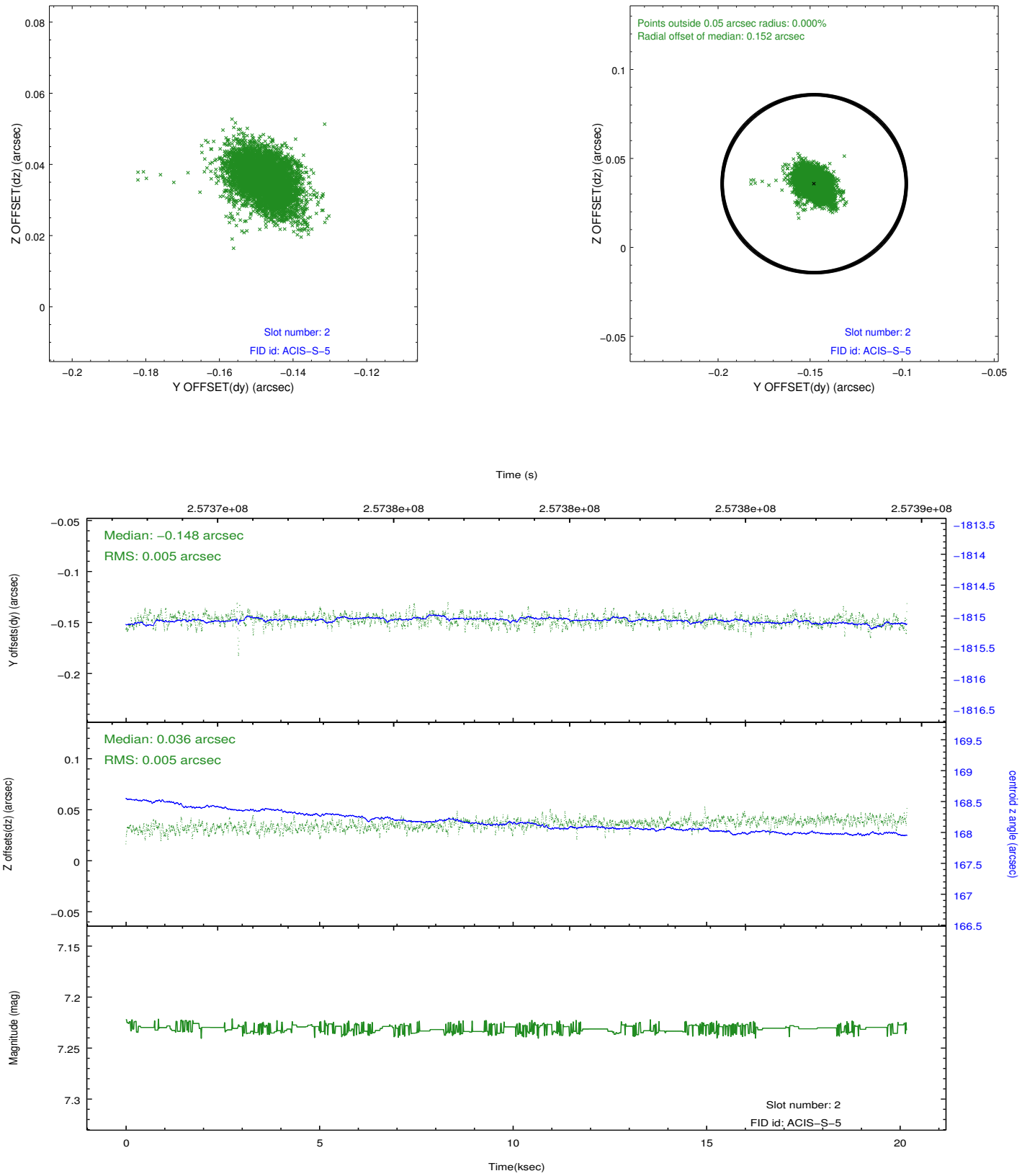
2.5.1 Slot 0



2.5.2 Slot 1



2.5.3 Slot 2



A Summary

A.1 Status

V&V Scientist	Jen Lauer
V&V Date (YYYY-MM-DD)	2012.03.27
V&V Edition	1
V&V Disposition and Status	OK
V&V Charge Time	20.1747589

A.2 Comments