

V&V Reference Report

L2 ASCDS Version : 8.5.1.1

Observation 6357 - L2 Version 3
Chandra X-Ray Center

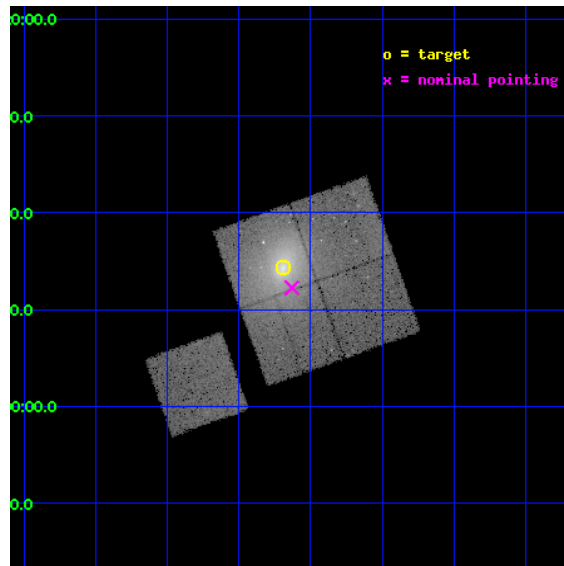
L2 Processing Date : Dec 27 2012

Contents

1	Front	2
2	OBI	3
2.1	OBI	3
2.1.1	Images	3
2.1.2	Bias	3
2.1.3	Parameters	4
2.1.4	Events	4
2.2	Compared Parameters	5
2.3	Aspect	6
2.4	Star Slots	9
2.4.1	Slot 3	9
2.4.2	Slot 4	10
2.4.3	Slot 5	11
2.4.4	Slot 6	12
2.4.5	Slot 7	13
2.5	FID Slots	14
2.5.1	Slot 0	14
2.5.2	Slot 1	15
2.5.3	Slot 2	16
A	Summary	17
A.1	Status	17
A.2	Comments	17

1 Front

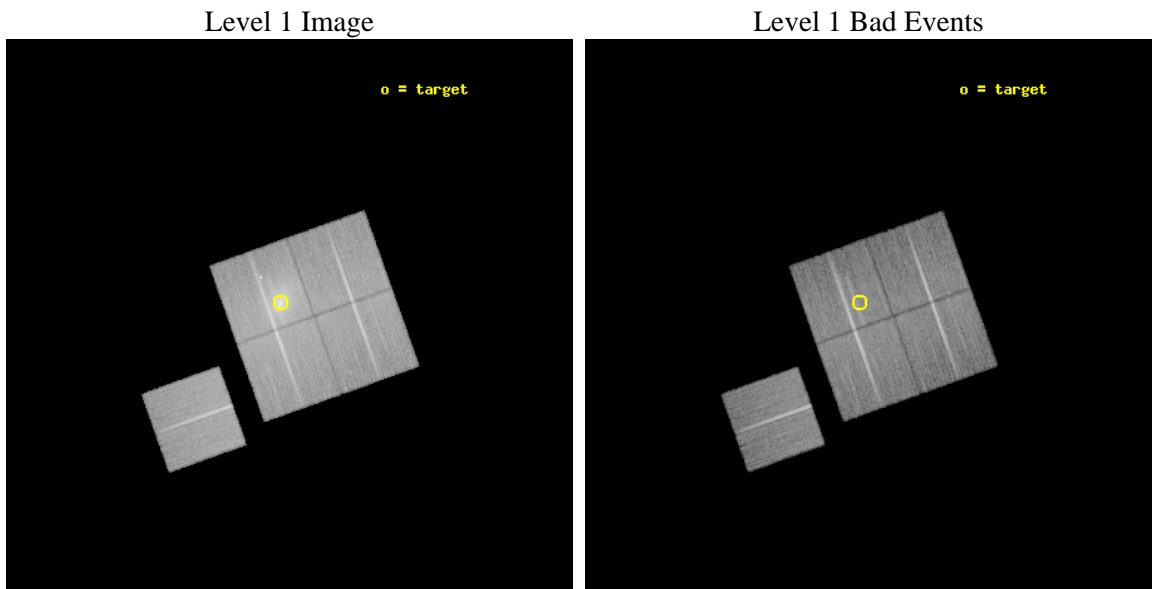
seq_num	800535	Sequence number
obs_id	6357	Observation id
title	A Deep Observation of a Radio-Quiet Cooling Flow	Proposal title
observer	Prof Megan Donahue	Principal investigator
object	Abell 1650	Source name
dtycycle	0	
cycle	P	events from which exps? Prim/Second/Both
ra_targ	194.672083	Observer's specified target RA [deg]
dec_targ	-1.761389	Observer's specified target Dec [deg]
ra_nom	194.65764083003	Nominal RA [deg]
dec_nom	-1.7961935447546	Nominal Dec [deg]
roll_nom	250.40561802578	Nominal Roll [deg]
revision	3	Processing version of data
ontime	33089.358966082	Sum of GTIs [s]
livetime	32657.022131159	Livetime [s]
ontime0	33092.499936342	Sum of GTIs [s]
ontime1	33092.499936342	Sum of GTIs [s]
ontime2	33089.358966053	Sum of GTIs [s]
ontime3	33089.358966082	Sum of GTIs [s]
ontime6	33086.217985928	Sum of GTIs [s]
l2events	190004	Number of level 2 events



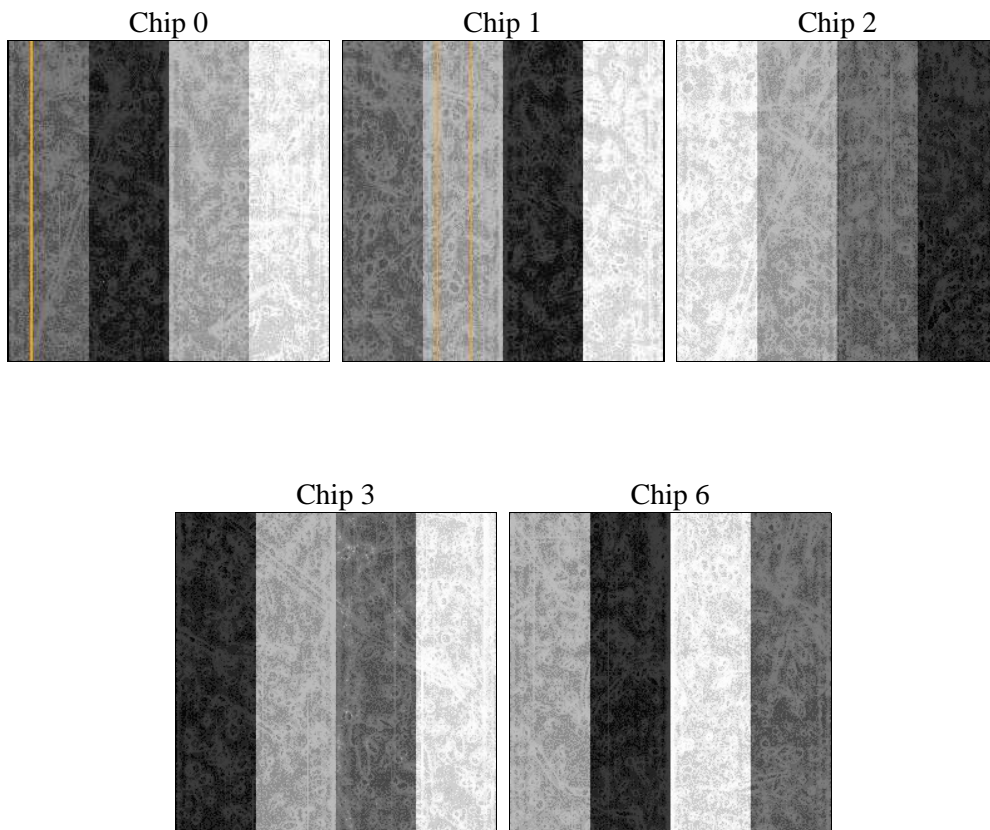
2 OBI

2.1 OBI

2.1.1 Images



2.1.2 Bias



2.1.3 Parameters

obi_num	0	Obi number	sched_exp_time	33000.000000	[s] Scheduled observation exposure time
ascdsver	8.5.1.1	Processing system revision	ontime	33089.358966082	Sum of GTIs [s]
caldbver	4.5.5	 	ontime0	33092.499936342	Sum of GTIs [s]
date	2012-12-27T05:01:47	Date and time of file creation	ontime1	33092.499936342	Sum of GTIs [s]
revision	3	Processing version of data	ontime2	33089.358966053	Sum of GTIs [s]
			ontime3	33089.358966082	Sum of GTIs [s]
			ontime6	33086.217985928	Sum of GTIs [s]
			l1events	1108861	Number of level 1 events

2.1.4 Events

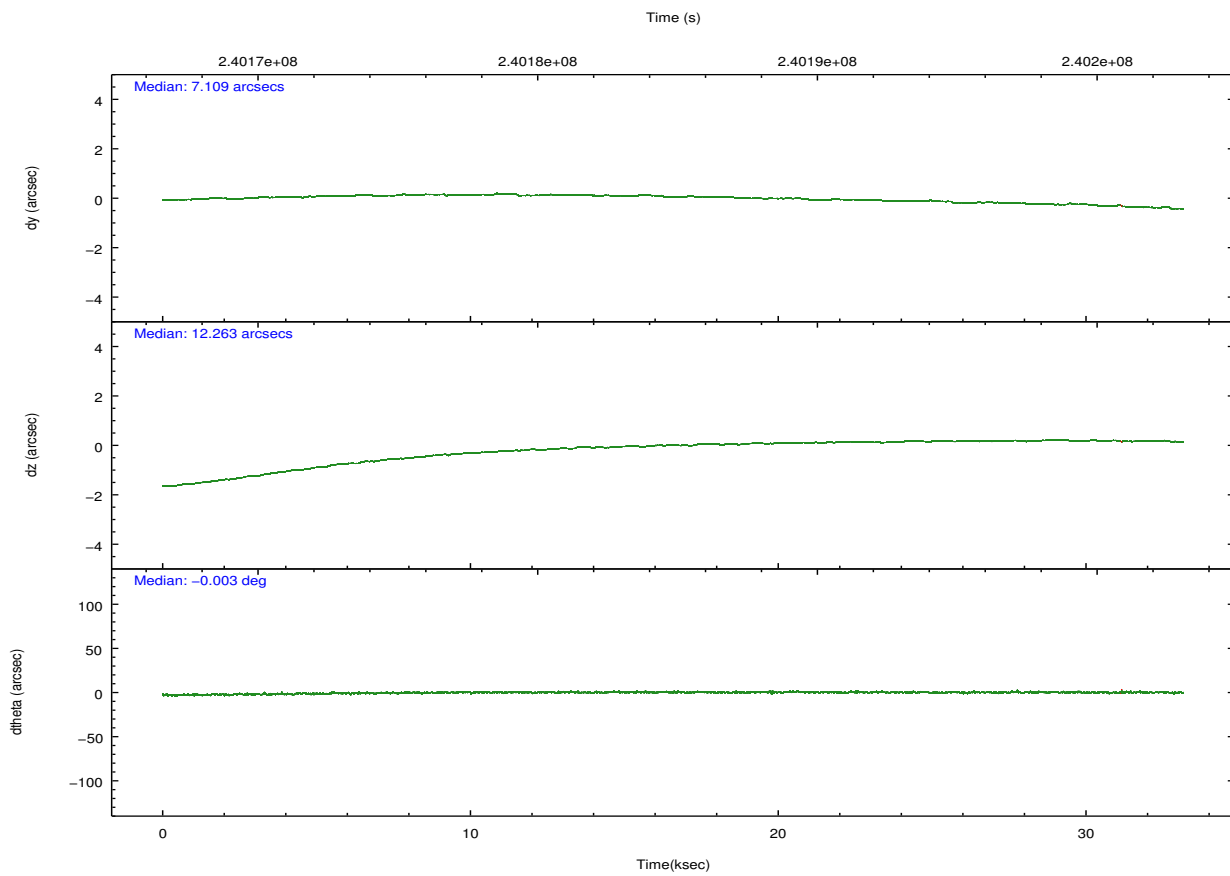
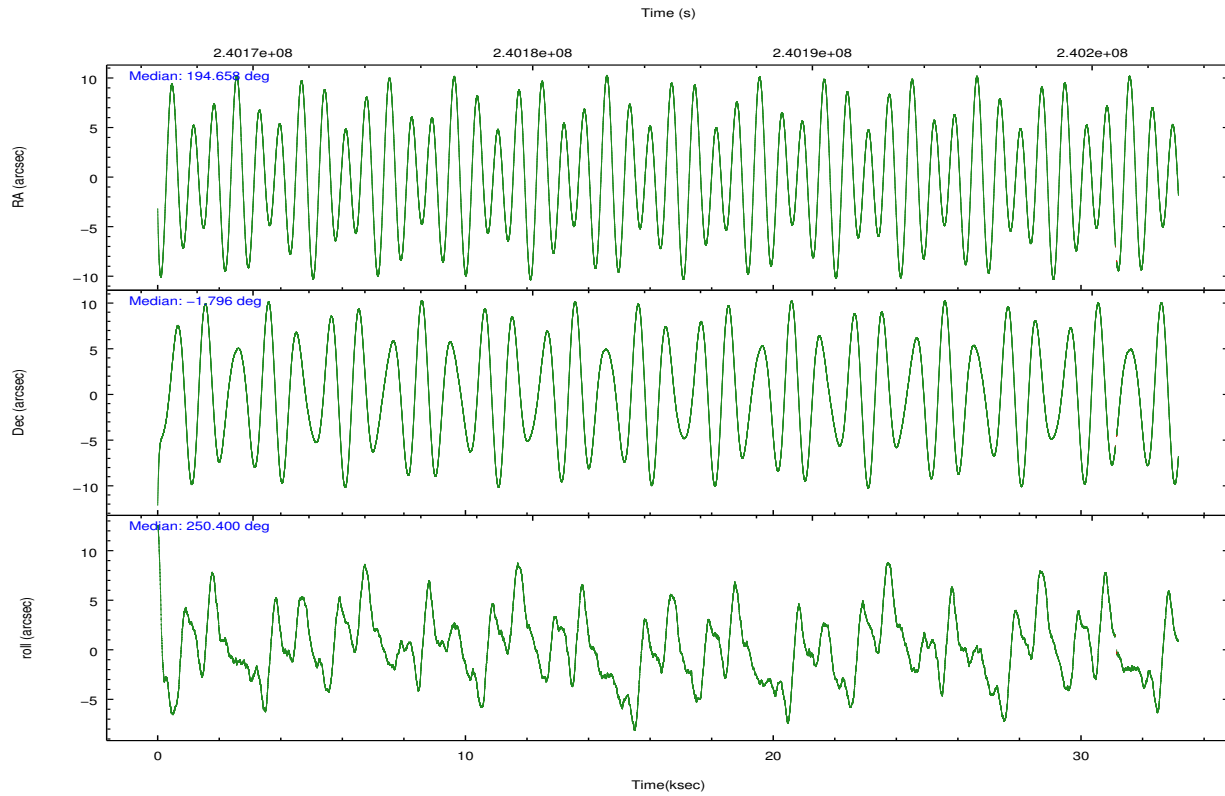
	ccd 0	ccd 1	ccd 2	ccd 3	ccd 6
level 1 events	195480	195011	223405	292138	202827
rejected events	173512	165284	193309	184550	181833
rejected %	88%	84%	86%	63%	89%

	ccd 0	ccd 1	ccd 2	ccd 3	ccd 6
grade 0 events	8784	14596	15719	80523	7713
	4%	7%	7%	27%	3%
grade 1 events	114	112	139	498	91
	0%	0%	0%	0%	0%
grade 2 events	4894	5646	5679	12539	4441
	2%	2%	2%	4%	2%
grade 3 events	2364	2632	2534	4768	2349
	1%	1%	1%	1%	1%
grade 4 events	2248	2568	2564	4761	2328
	1%	1%	1%	1%	1%
grade 5 events	7118	7962	6911	8402	7998
	3%	4%	3%	2%	3%
grade 6 events	3870	4623	3824	5758	4354
	1%	2%	1%	1%	2%
grade 7 events	166088	156872	186035	174889	173553
	84%	80%	83%	59%	85%

2.2 Compared Parameters

Parameter	Planned	Actual	Parameter	Planned	Actual
Instrument	ACIS	ACIS	Obspar format version number	7	7
Detector	ACIS-01236	ACIS-01236	Obspar file type	PREDICTED	ACTUAL
Grating	NONE	NONE	Obspar update status	NONE	UPDATED
Data mode	VFAINT	VFAINT	Number of optional ACIS chips dropped	0	0
Observation mode	POINTING	POINTING	On-chip summing requested	N	N
[deg] Pointing RA	194.652591	194.6576408300283	Subarray requested	NONE	NONE
[deg] Pointing Dec	-1.769260	-1.796193544754606	Alternating exposures requested	N	N
[deg] Pointing Roll	250.196774	250.405618025782	[s] Primary exposure time	0.000000	3.1
[mm] SIM focus pos	-0.782348	-0.7809083437167272			
[mm] SIM defocus	0	0.001439871863259334			
[mm] SIM translation stage pos	-227.592463	-227.5933067819097			
[mm] SIM translation stage offset	-6	-5.999146221020027			
[s] Observation start time (MET)	240168423.184000	240167314.57445			
Observation start date	2005-08-11T17:25:59	2005-08-11T17:08:34			
[s] Observation end time (MET)	240201423.184000	240201938.05104			
Observation end date	2005-08-12T02:35:59	2005-08-12T02:45:38			
Read mode	TIMED	TIMED			

2.3 Aspect

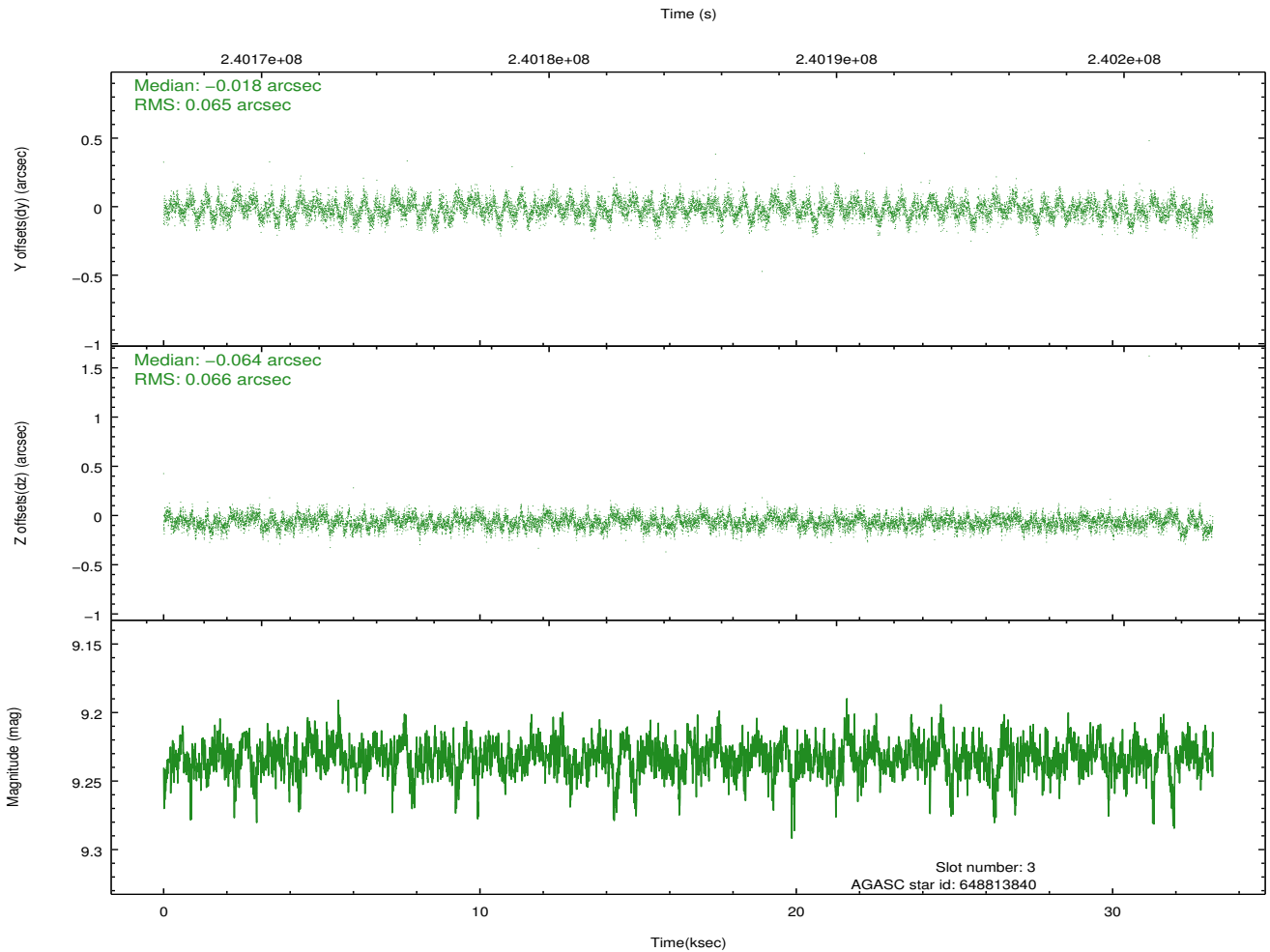
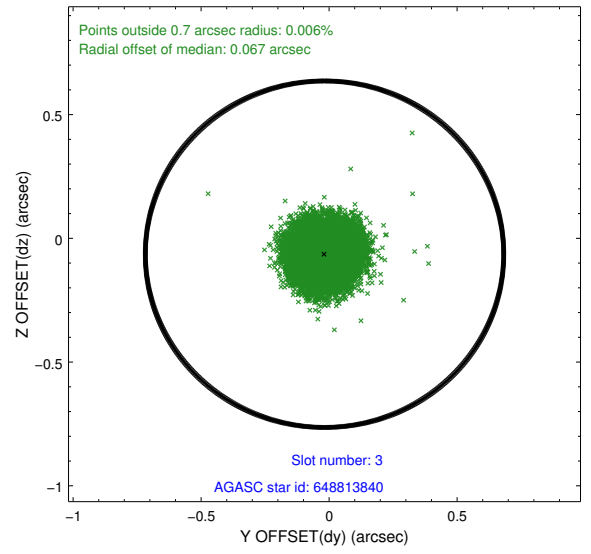
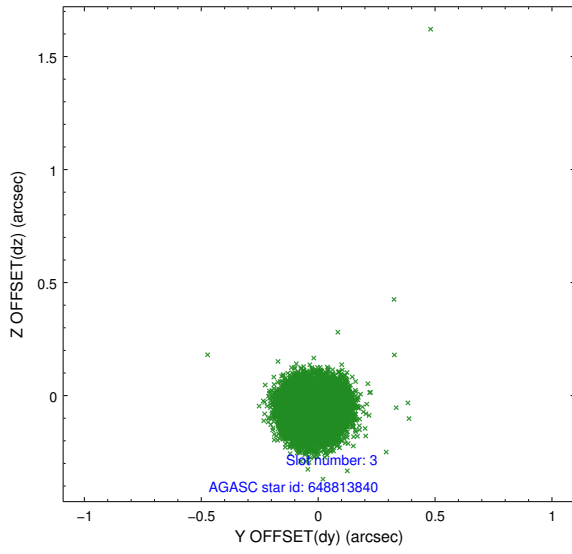


Slot Statistics

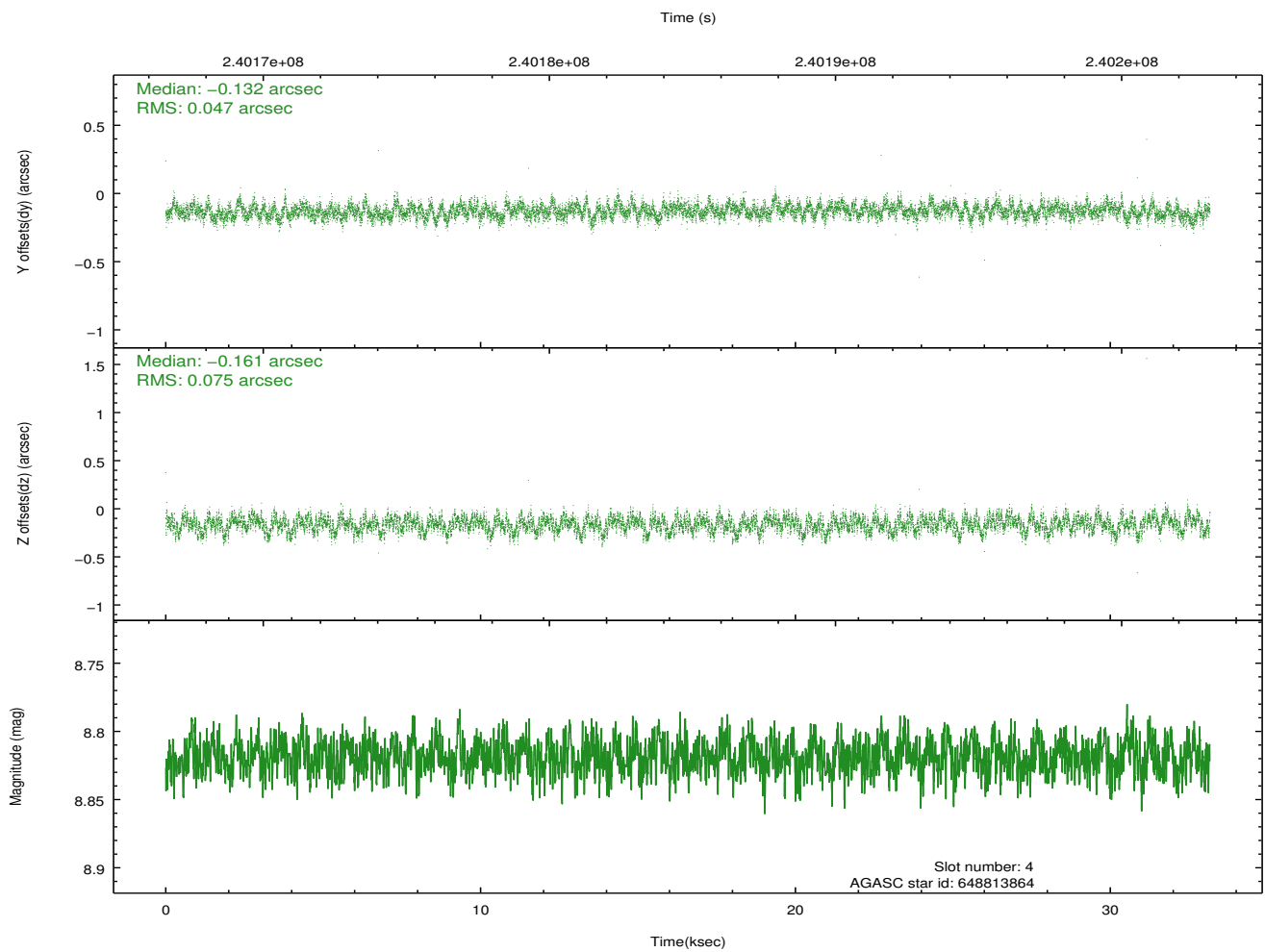
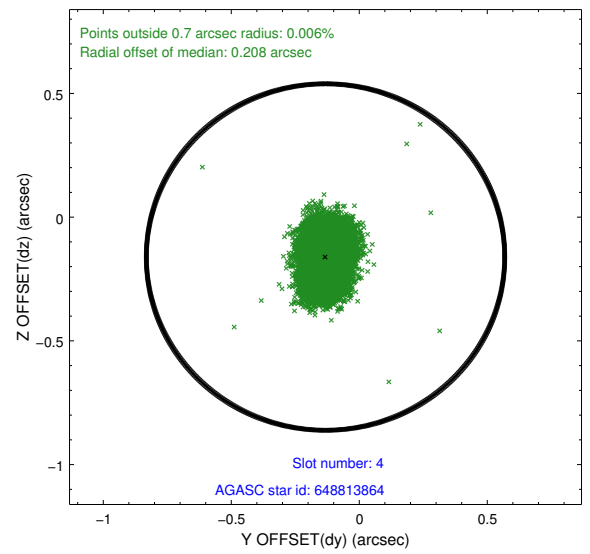
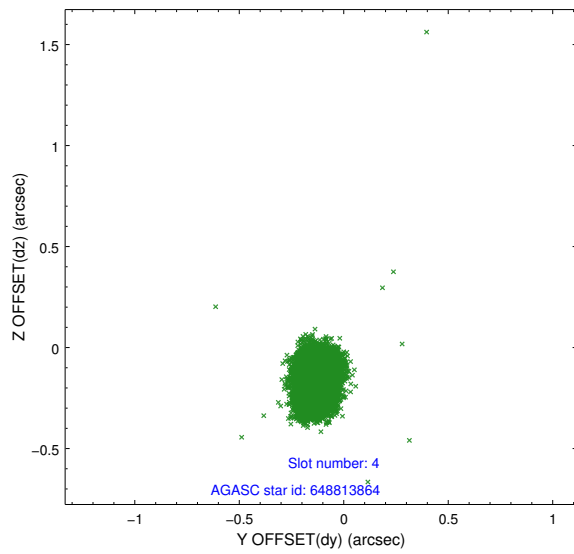
slot	status	id	mag	n_pts	med_dy	med_dz	dr1	dr2	ra	dec	mean_y	mean_z
0	FID	ACIS-I-1	7.23	8082	0.072	-0.170	0.015	0.065	0.000000	0.000000	932.58	-958.82
1	FID	ACIS-I-4	7.15	8082	0.024	0.106	0.017	0.036	0.000000	0.000000	2152.22	941.99
2	FID	ACIS-I-5	7.22	8082	-0.191	0.134	0.013	0.028	0.000000	0.000000	-1815.65	939.09
3	GUIDE	648813840	9.23	16150	-0.018	-0.064	0.098	0.154	194.717621	-1.945504	518.27	435.70
4	GUIDE	648813864	8.82	16160	-0.132	-0.161	0.092	0.152	194.235605	-1.103465	-1746.09	-2224.18
5	GUIDE	648815736	9.93	16146	0.129	-0.093	0.135	0.214	194.100949	-2.130858	1897.93	-1425.89
6	GUIDE	648815800	9.56	16075	0.178	0.127	0.121	0.188	194.475560	-2.052849	1176.80	-253.04
7	GUIDE	649731776	10.02	16139	-0.162	0.193	0.197	0.302	195.271404	-1.336449	-2220.15	1567.93

2.4 Star Slots

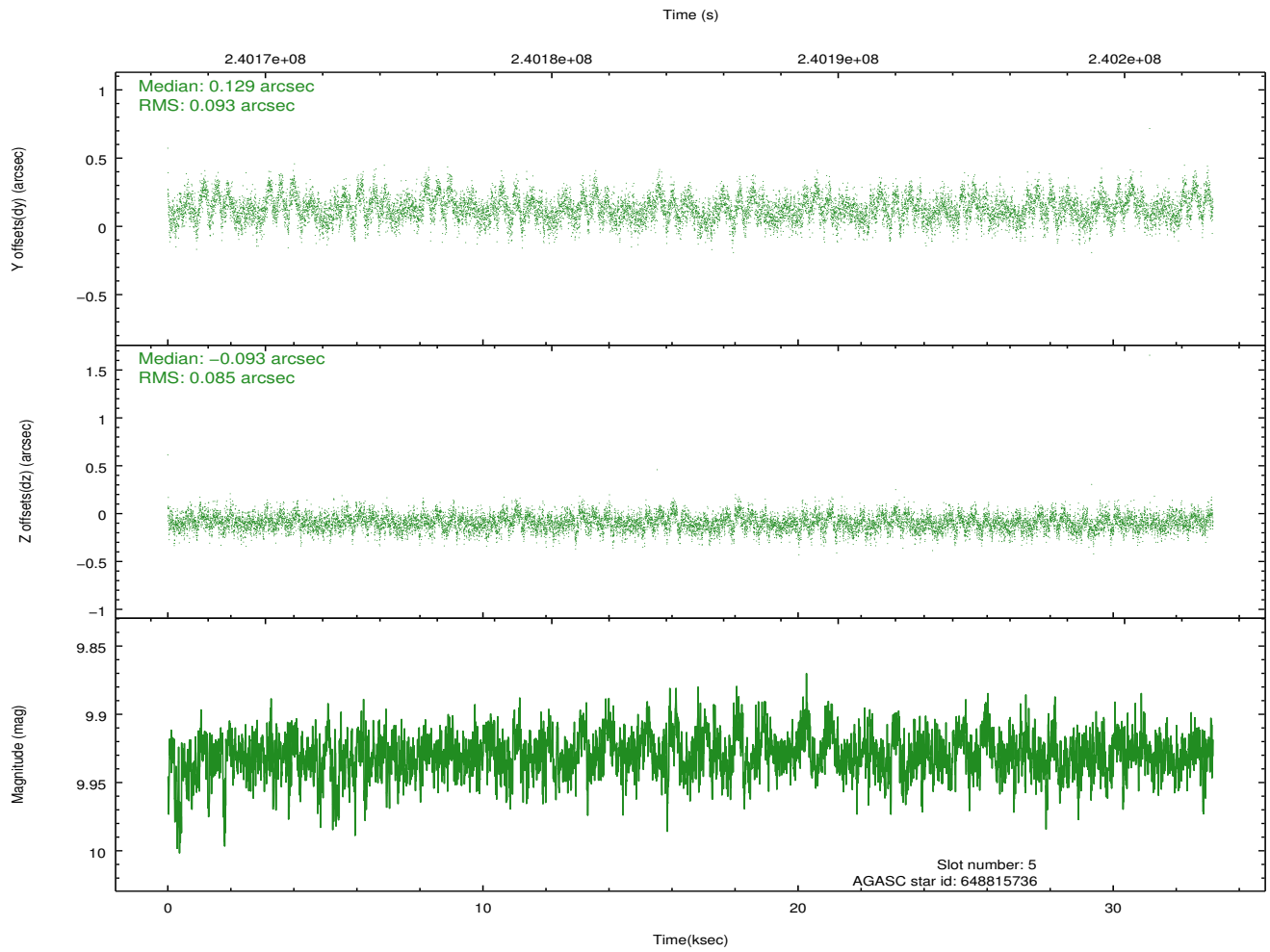
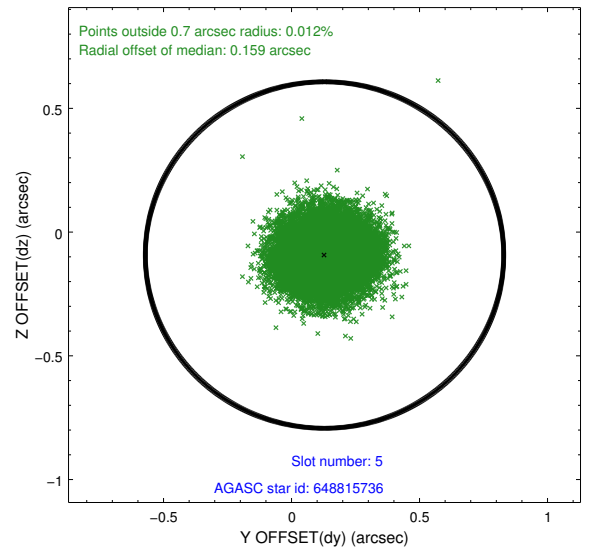
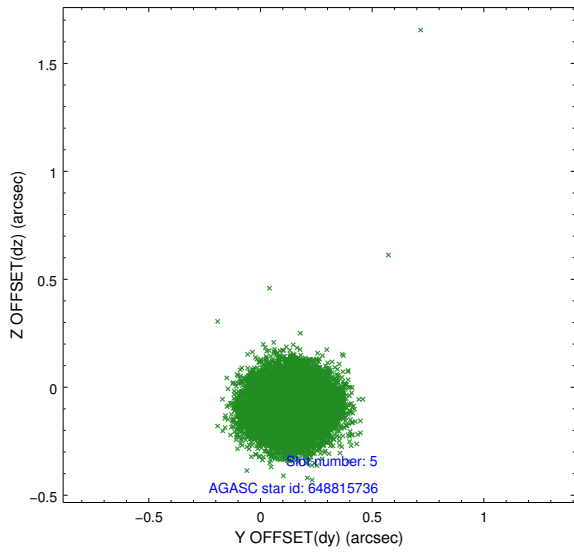
2.4.1 Slot 3



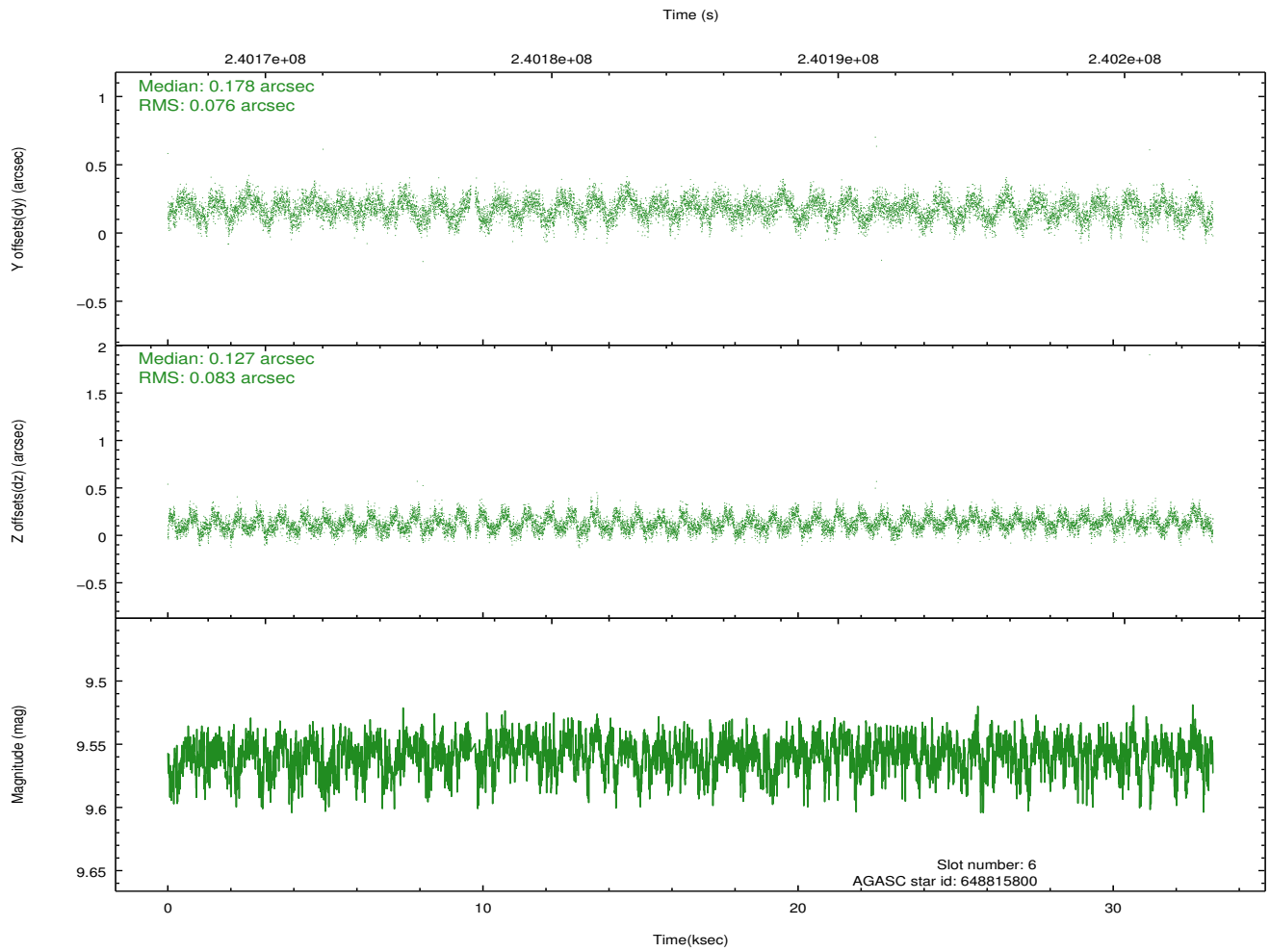
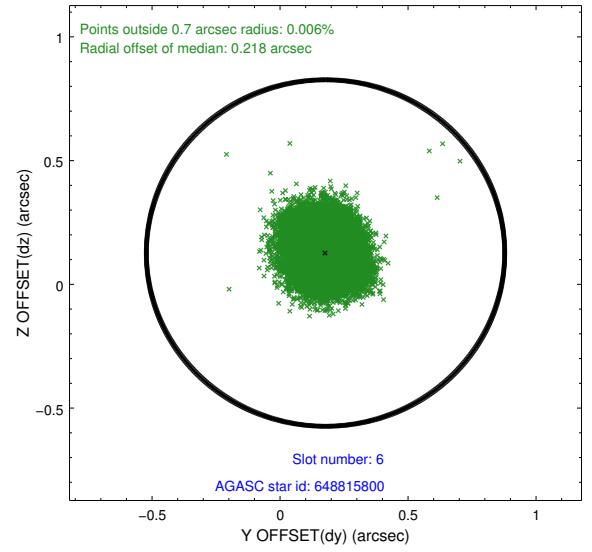
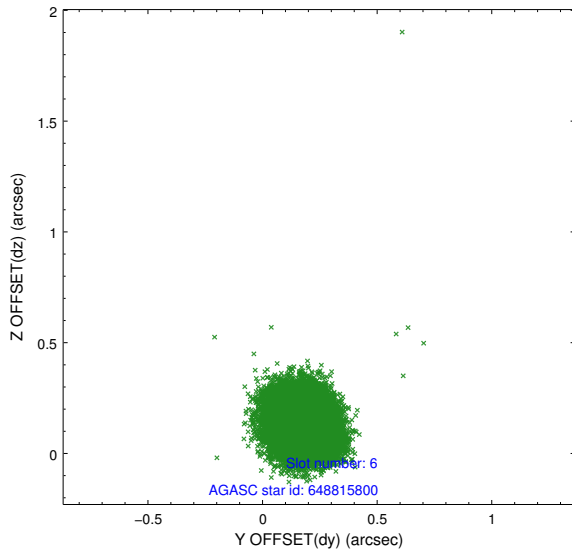
2.4.2 Slot 4



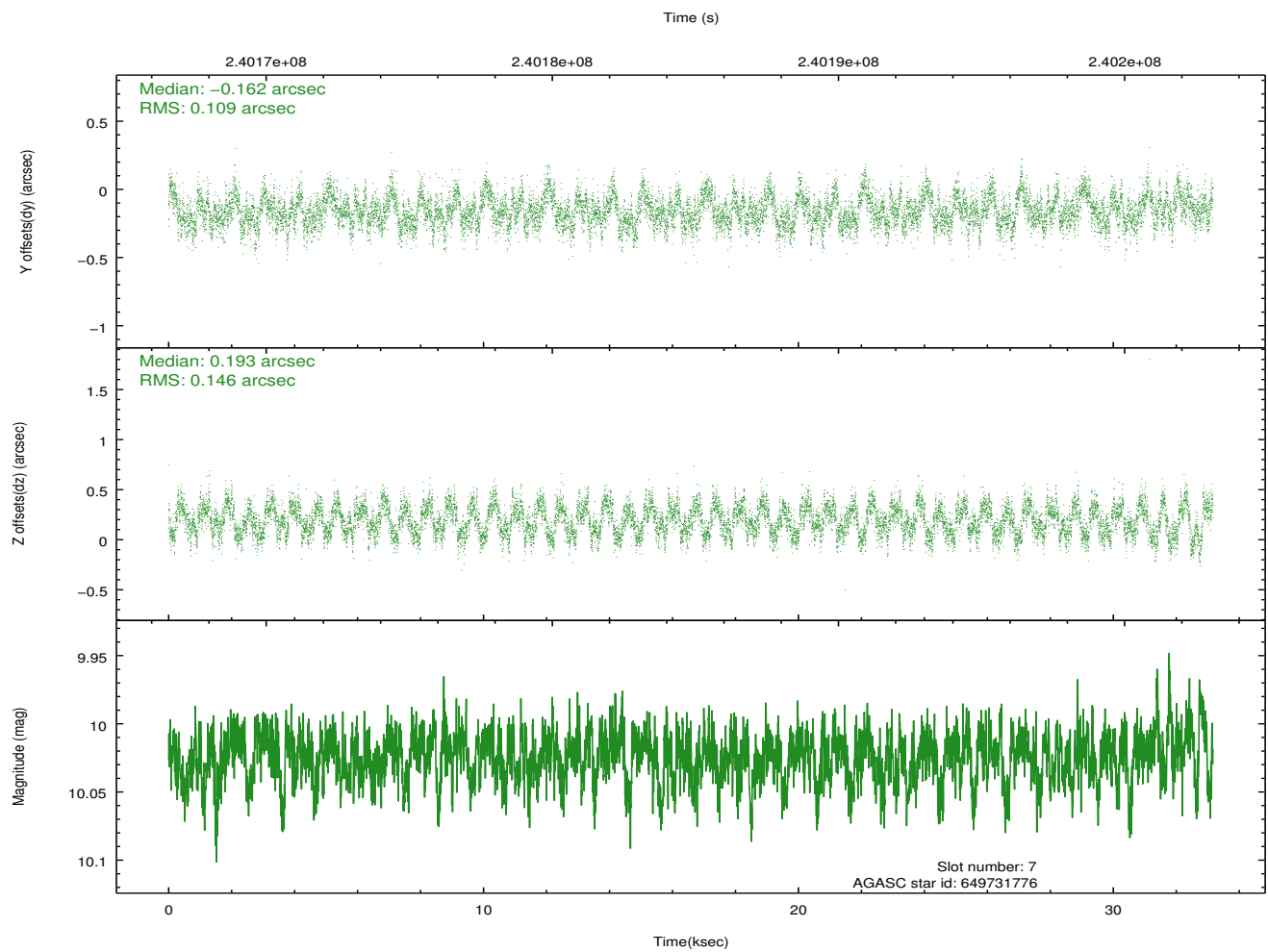
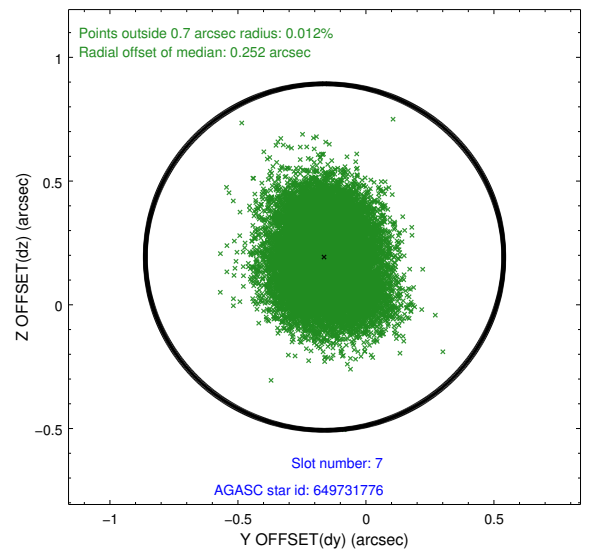
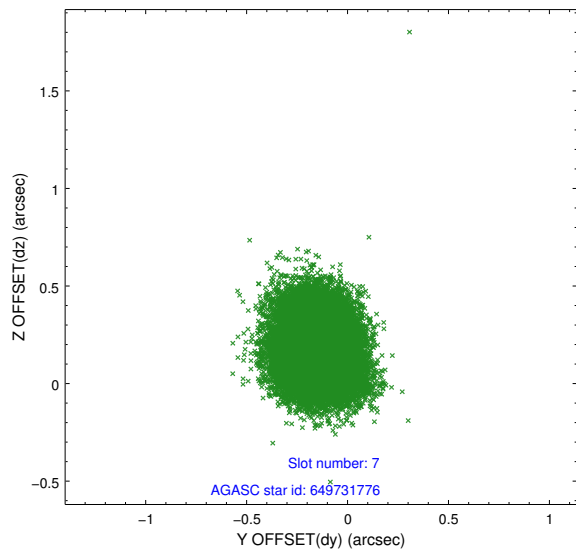
2.4.3 Slot 5



2.4.4 Slot 6

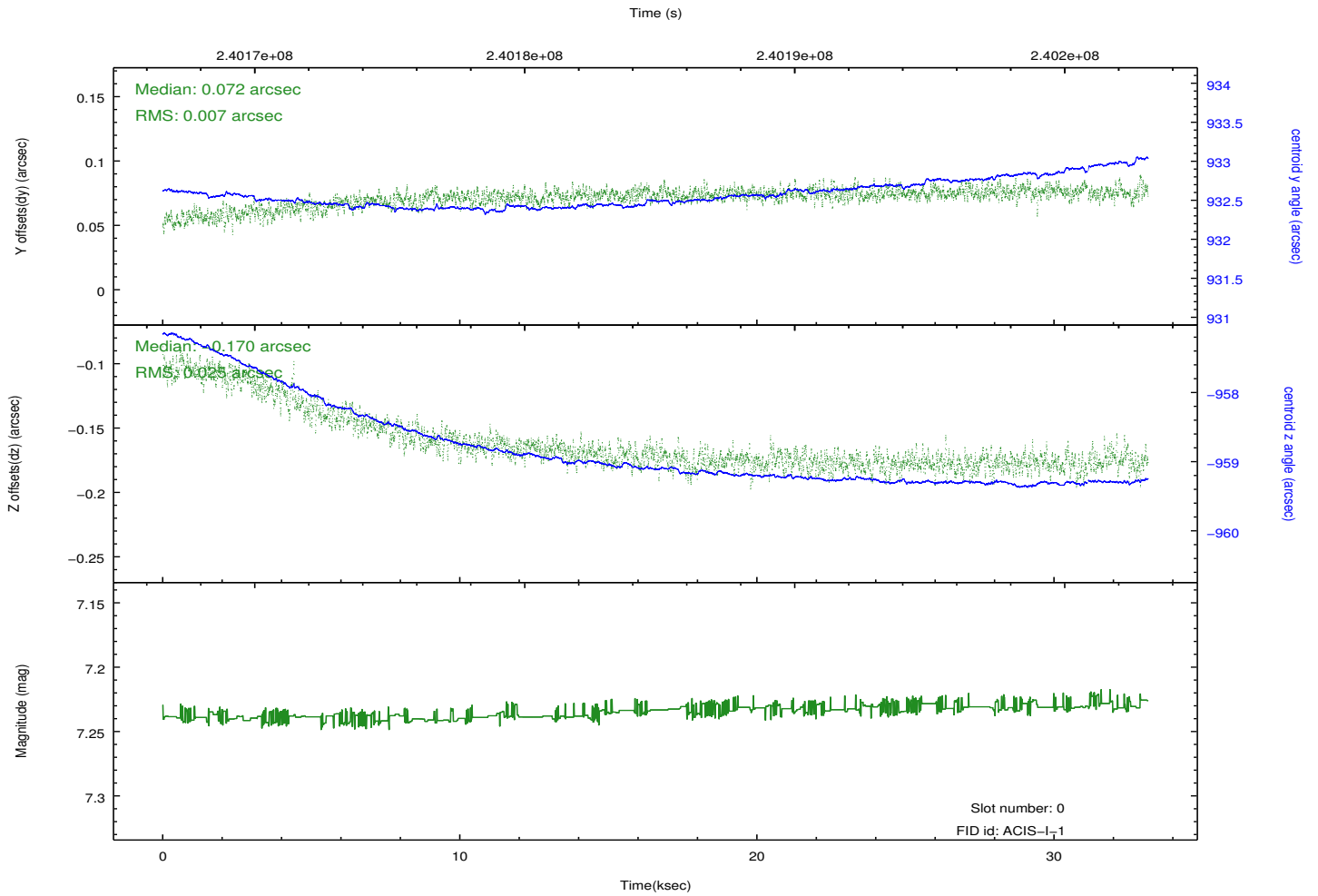
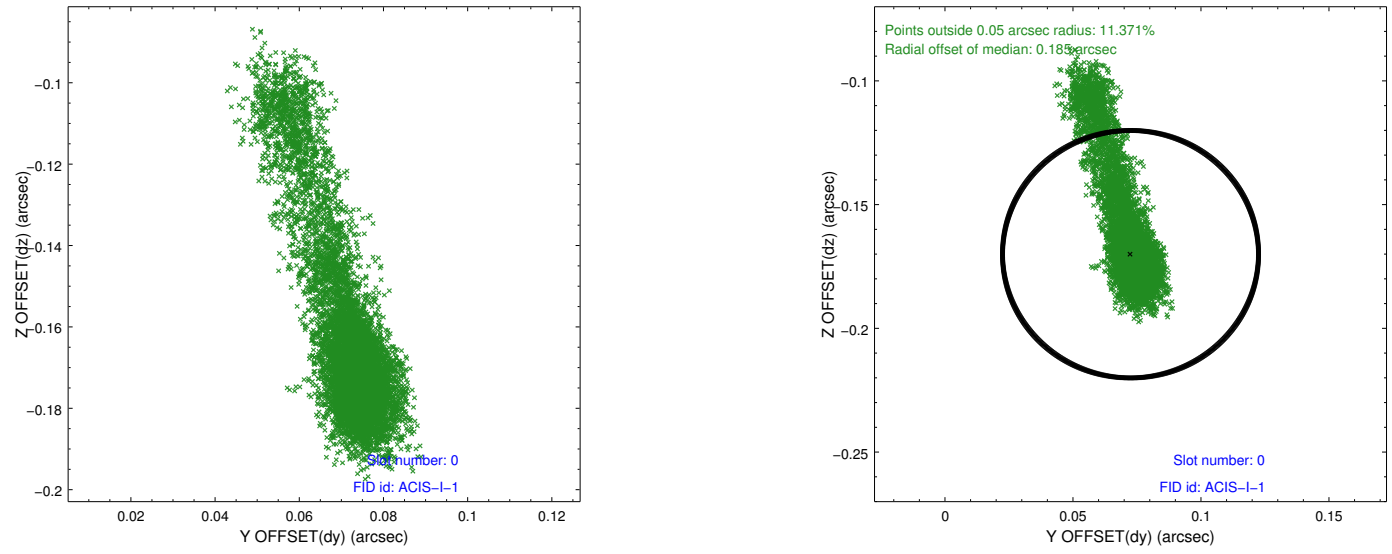


2.4.5 Slot 7

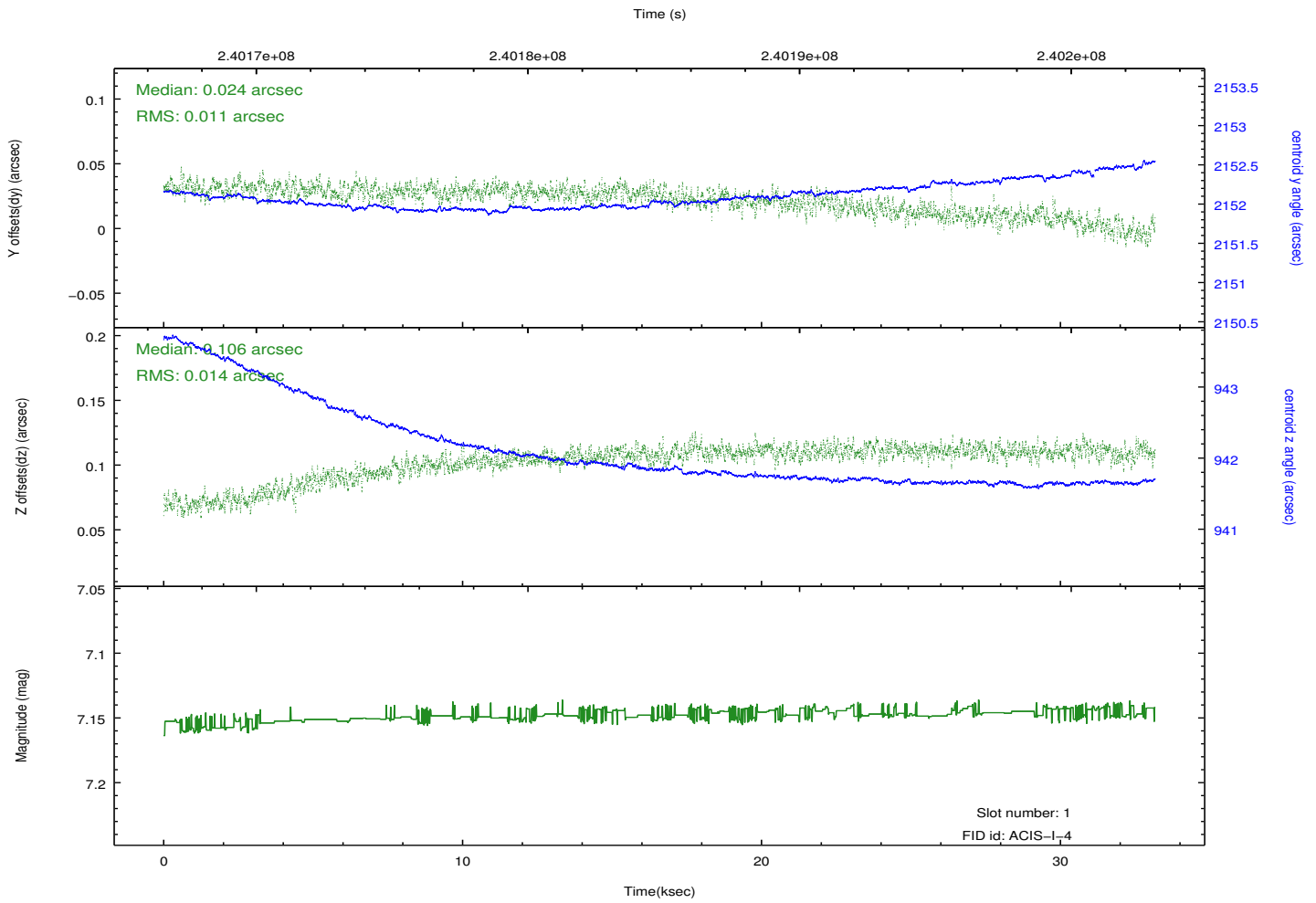
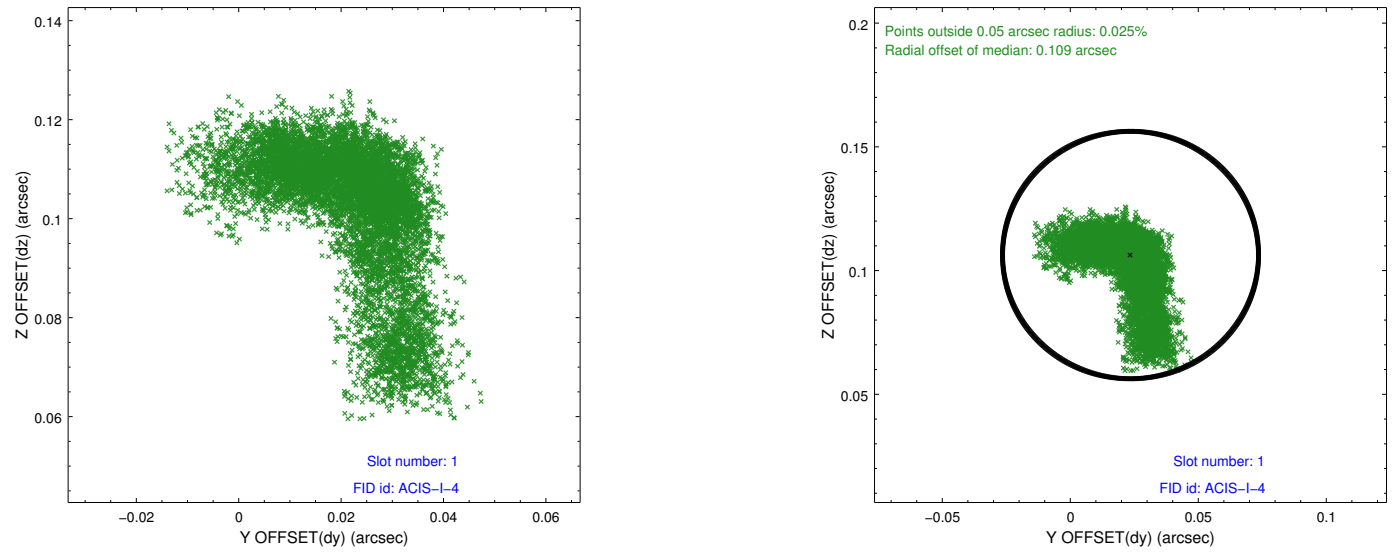


2.5 FID Slots

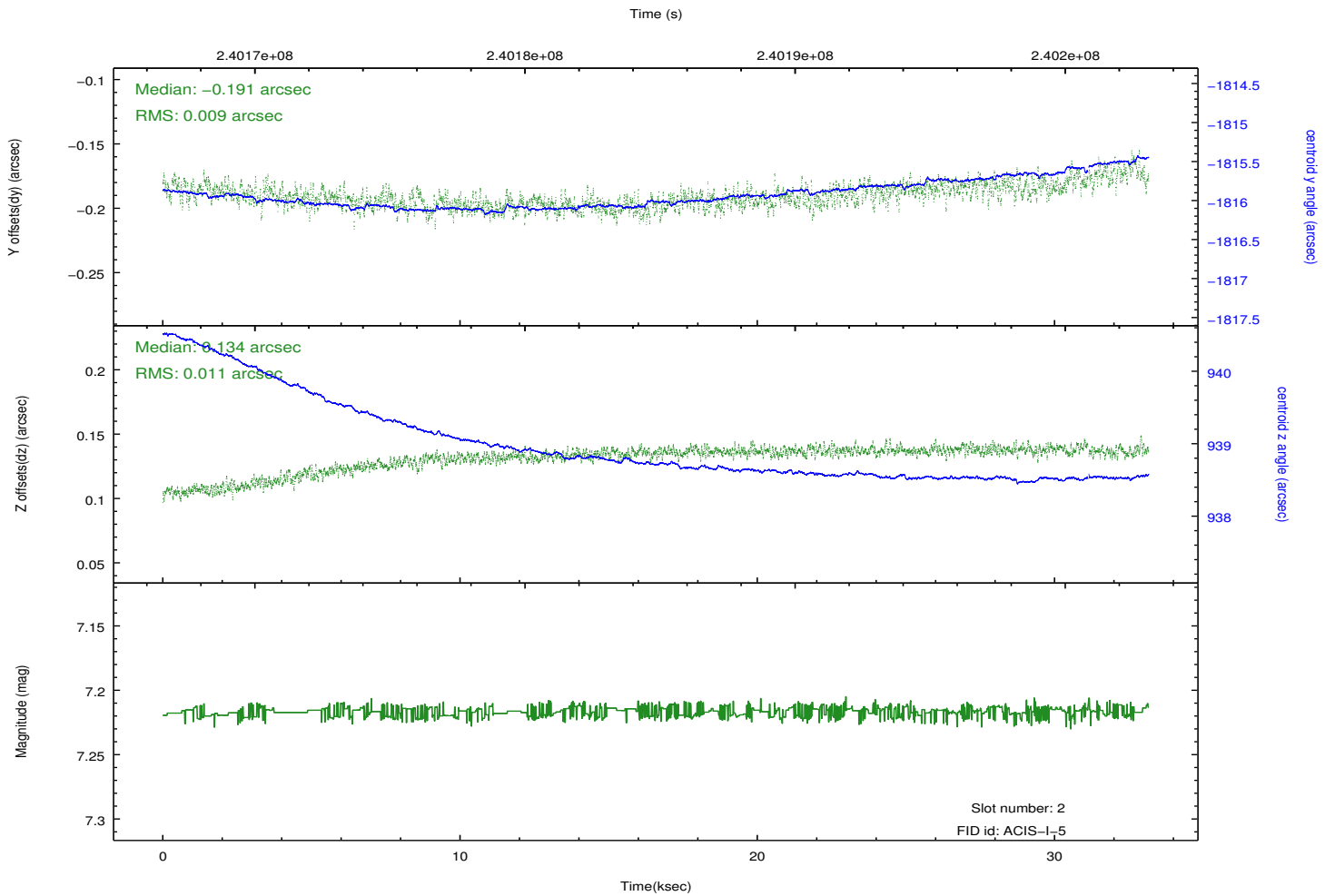
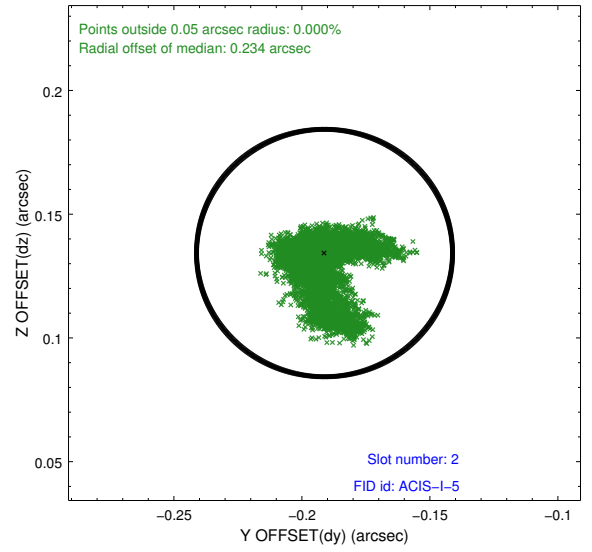
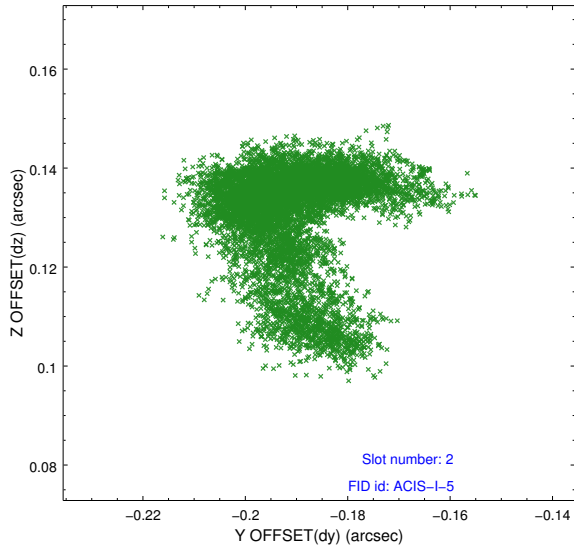
2.5.1 Slot 0



2.5.2 Slot 1



2.5.3 Slot 2



A Summary

A.1 Status

V&V Scientist	Jen Lauer
V&V Date (YYYY-MM-DD)	2013.01.24
V&V Edition	1
V&V Disposition and Status	OK
V&V Charge Time	33.08935

A.2 Comments