

V&V Reference Report

L2 ASCDS Version : 8.4.5

Observation 737 - L2 Version 4
Chandra X-Ray Center

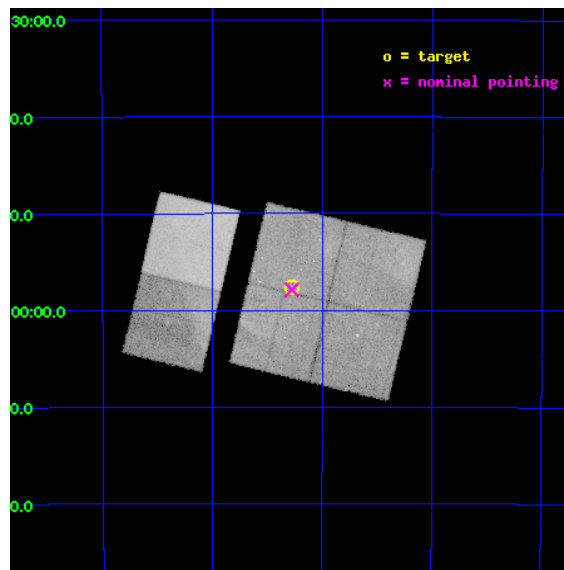
L2 Processing Date : Aug 30 2012

Contents

1	Front	2
2	OBI	3
2.1	OBI	3
2.1.1	Images	3
2.1.2	Bias	3
2.1.3	Parameters	4
2.1.4	Events	4
2.2	Compared Parameters	5
2.3	Aspect	6
2.4	Star Slots	9
2.4.1	Slot 3	9
2.4.2	Slot 4	10
2.4.3	Slot 5	11
2.4.4	Slot 6	12
2.4.5	Slot 7	13
2.5	FID Slots	14
2.5.1	Slot 0	14
2.5.2	Slot 1	15
2.5.3	Slot 2	16
A	Summary	17
A.1	Status	17
A.2	Comments	17

1 Front

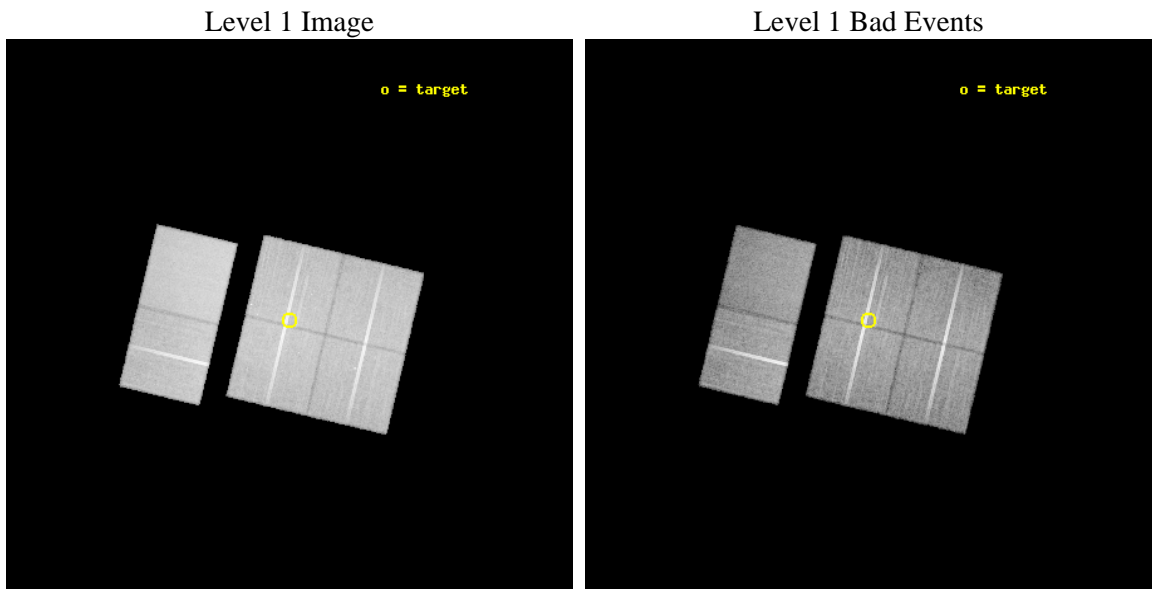
seq_num	500033	Sequence number
obs_id	737	Observation id
title	AN AXAF STUDY OF THE NONTHERMAL EMISSION IN G347.5-0.5	Proposal ti
observer	Dr. Patrick Slane	Principal investigator
object	G347.5-0.5	Source name
dtcycle	0	
cycle	P	events from which exps? Prim/Second/Both
ra_targ	258.82	Observer's specified target RA [deg]
dec_targ	-39.96	Observer's specified target Dec [deg]
ra_nom	258.81892233573	Nominal RA [deg]
dec_nom	-39.964874291597	Nominal Dec [deg]
roll_nom	283.36168068333	Nominal Roll [deg]
revision	4	Processing version of data
ontime	38959.288398966	Sum of GTIs [s]
livetime	38465.962430791	Livetime [s]
ontime0	38959.165278971	Sum of GTIs [s]
ontime1	38959.206318974	Sum of GTIs [s]
ontime2	38959.247358978	Sum of GTIs [s]
ontime3	38959.288398966	Sum of GTIs [s]
ontime6	38959.370478973	Sum of GTIs [s]
ontime7	38959.329438969	Sum of GTIs [s]
l2events	348751	Number of level 2 events



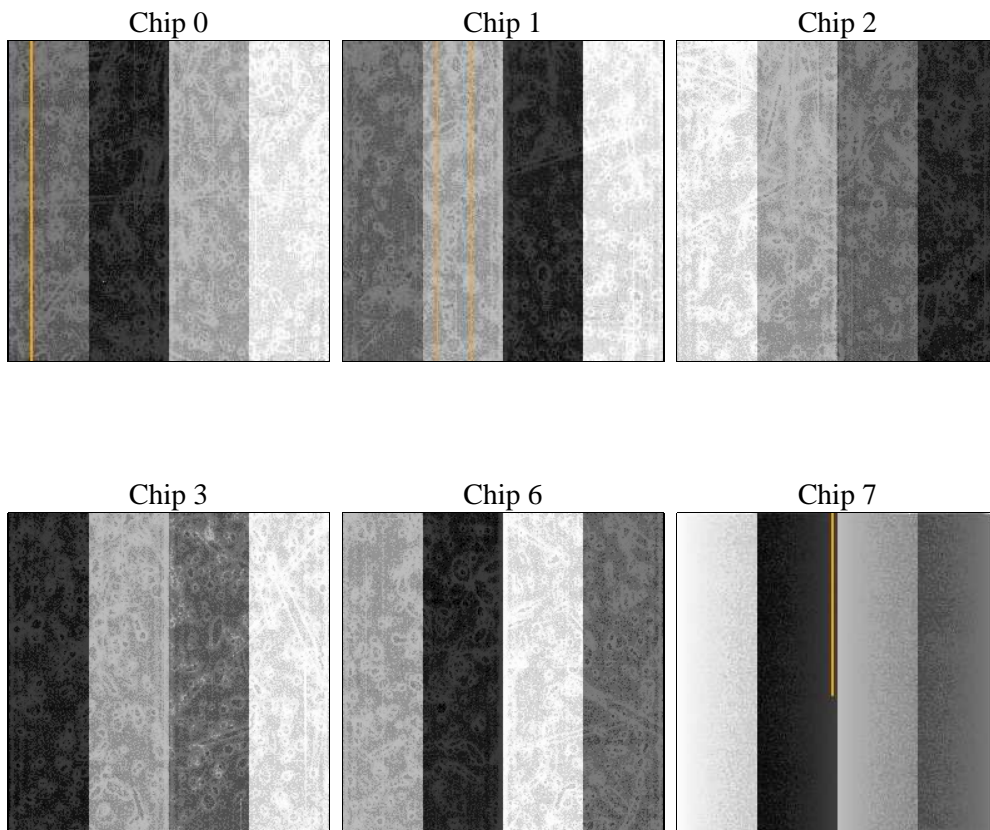
2 OBI

2.1 OBI

2.1.1 Images



2.1.2 Bias



2.1.3 Parameters

obi_num	0	Obi number	sched_exp_time	39000.000000	[s] Scheduled observation exposure time
ascdsver	8.4.5	Processing system revision	ontime	38959.288398966	Sum of GTIs [s]
caldbver	4.5.1.1	 	ontime0	38959.165278971	Sum of GTIs [s]
date	2012-08-30T19:12:53	Date and time of file creation	ontime1	38959.206318974	Sum of GTIs [s]
revision	4	Processing version of data	ontime2	38959.247358978	Sum of GTIs [s]
			ontime3	38959.288398966	Sum of GTIs [s]
			ontime6	38959.370478973	Sum of GTIs [s]
			ontime7	38959.329438969	Sum of GTIs [s]
			l1events	1476619	Number of level 1 events

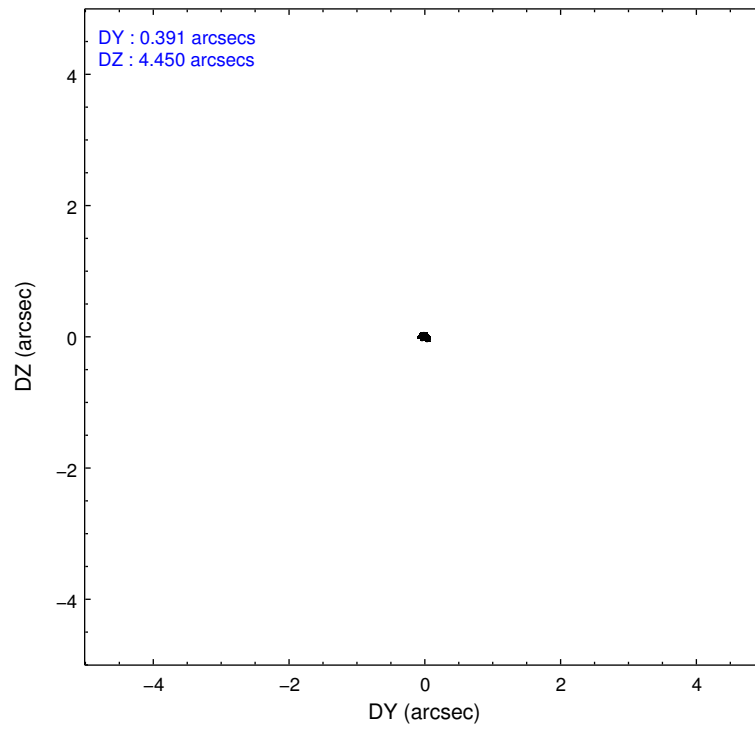
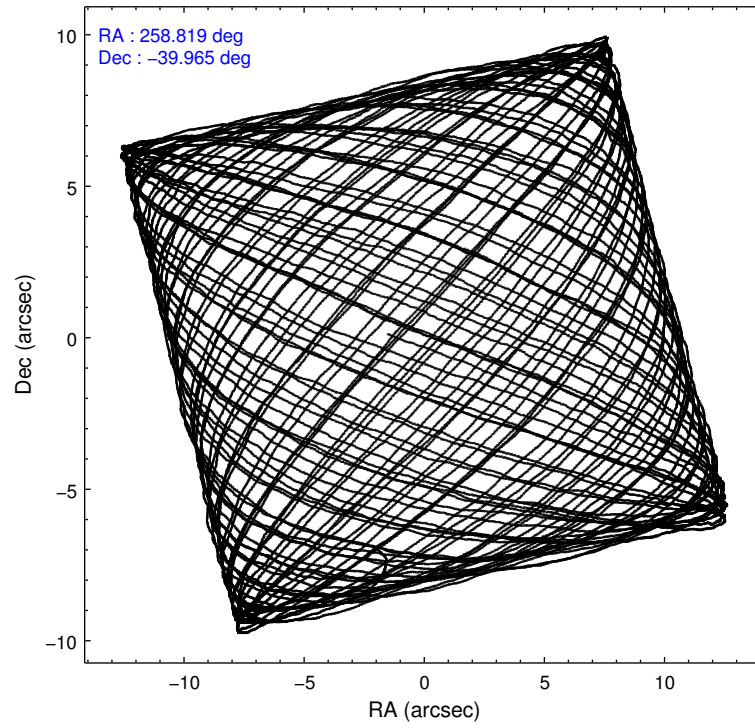
2.1.4 Events

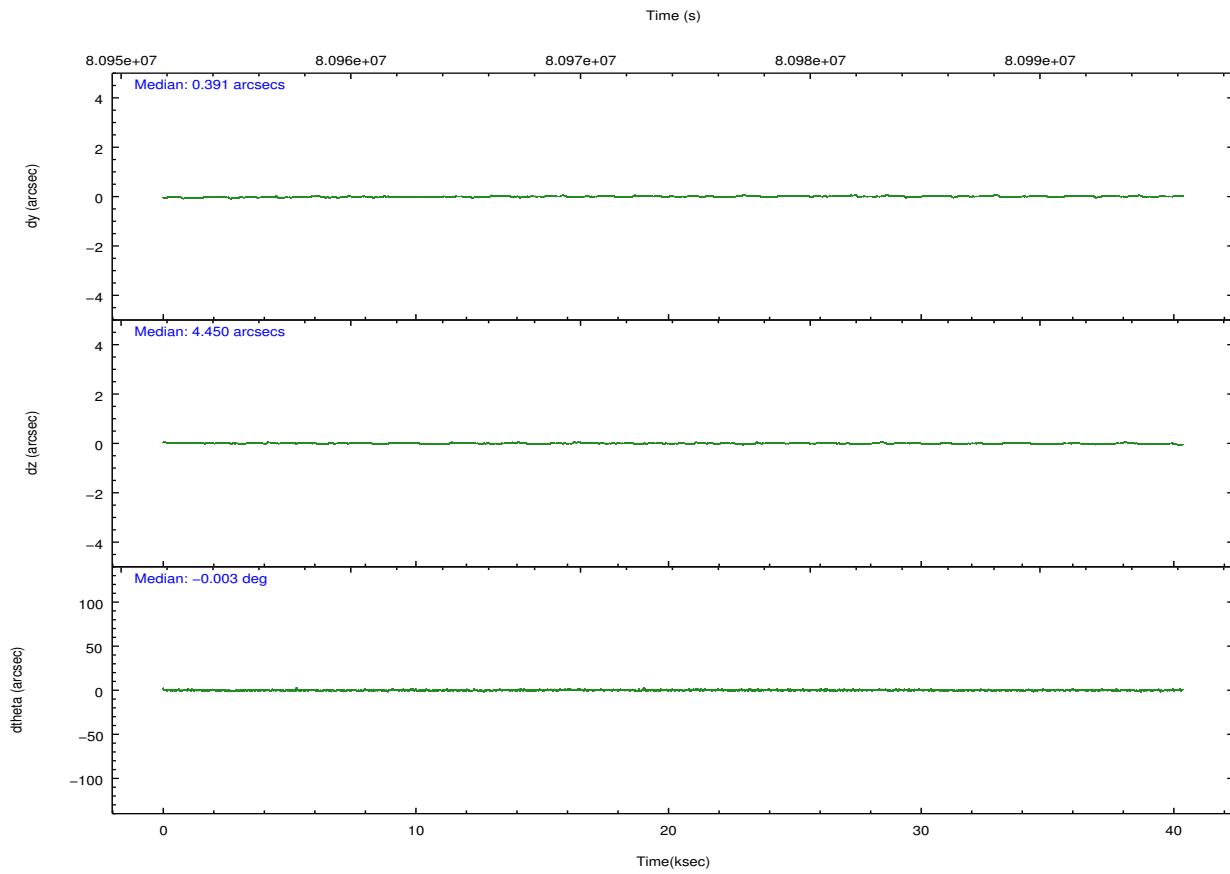
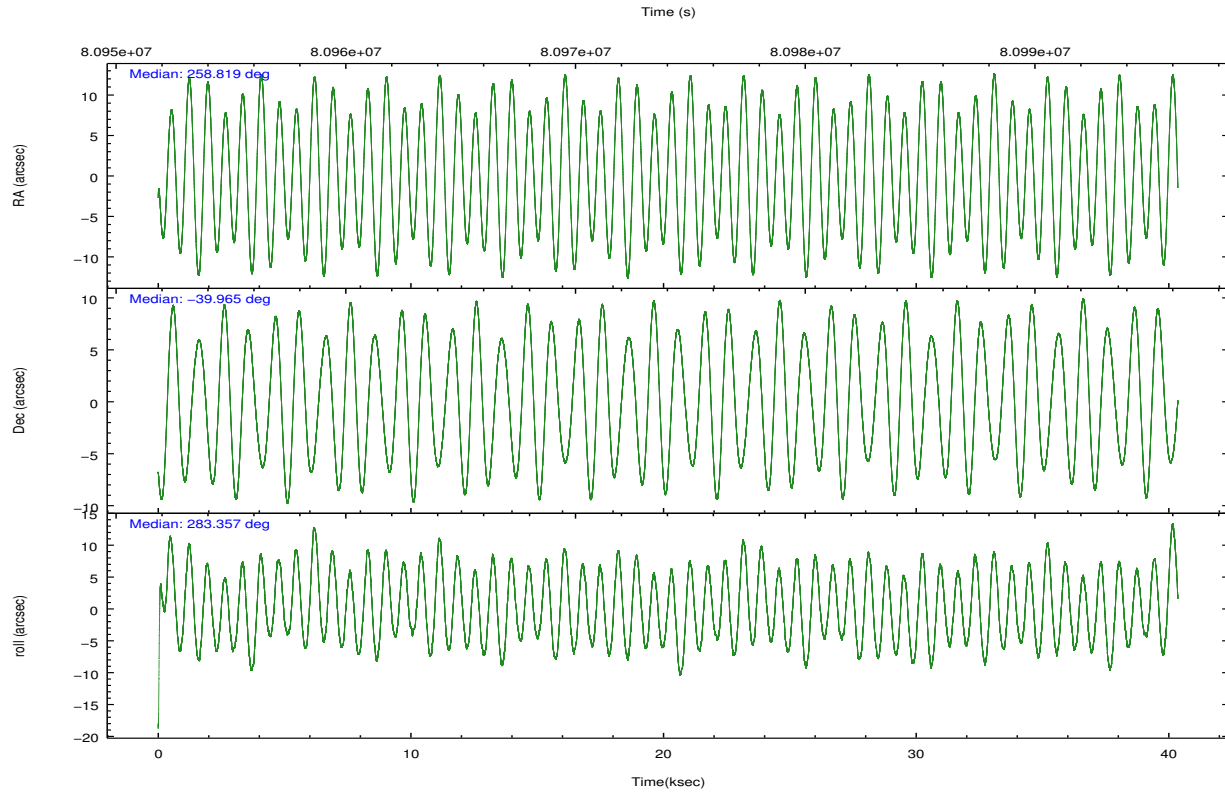
	ccd 0	ccd 1	ccd 2	ccd 3	ccd 6	ccd 7		ccd 0	ccd 1	ccd 2	ccd 3	ccd 6	ccd 7
level 1 events	218507	230617	249824	244631	237878	295162	grade 0 events	24757	33214	32631	32377	19917	17511
rejected events	176039	176190	197746	192997	200805	156392		11%	14%	13%	13%	8%	5%
rejected %	80%	76%	79%	78%	84%	52%	grade 1 events	136	171	179	169	131	253
								0%	0%	0%	0%	0%	0%
							grade 2 events	6946	8261	8114	7720	6263	28976
								3%	3%	3%	3%	2%	9%
							grade 3 events	3055	3675	3173	3286	2867	13563
								1%	1%	1%	1%	1%	4%
							grade 4 events	2868	3647	3314	3315	2778	13328
								1%	1%	1%	1%	1%	4%
							grade 5 events	7435	8168	7154	7926	9032	26077
								3%	3%	2%	3%	3%	8%
							grade 6 events	4843	5636	4847	4944	5250	65398
								2%	2%	1%	2%	2%	22%
							grade 7 events	168467	167845	190412	184894	191640	130056
								77%	72%	76%	75%	80%	44%

2.2 Compared Parameters

Parameter	Planned	Actual	Parameter	Planned	Actual
Instrument	ACIS	ACIS	Obspar format version number	7	7
Detector	ACIS-012367	ACIS-012367	Obspar file type	PREDICTED	ACTUAL
Grating	NONE	NONE	Obspar update status	NONE	UPDATED
Data mode	FAINT	FAINT	Number of optional ACIS chips dropped	0	0
Observation mode	POINTING	POINTING	On-chip summing requested	N	N
[deg] Pointing RA	258.794361	258.8189223357288	Subarray requested	NONE	NONE
[deg] Pointing Dec	-39.944747	-39.96487429159725	Alternating exposures requested	N	N
[deg] Pointing Roll	283.137231	283.3616806833287	[s] Primary exposure time	0.000000	3.2
[mm] SIM focus pos	-0.782348	-0.7809083437167272			
[mm] SIM defocus	0	0.001439871863259334			
[mm] SIM translation stage pos	-223.592463	-223.5930311371277			
[mm] SIM translation stage offset	-10	-9.999421865801992			
[s] Observation start time (MET)	80955208.184000	80953662.25701199			
Observation start date	2000-07-25T23:32:24	2000-07-25T23:07:42			
[s] Observation end time (MET)	80994208.184000	80994633.04603501			
Observation end date	2000-07-26T10:22:24	2000-07-26T10:30:33			
Read mode	TIMED	TIMED			

2.3 Aspect





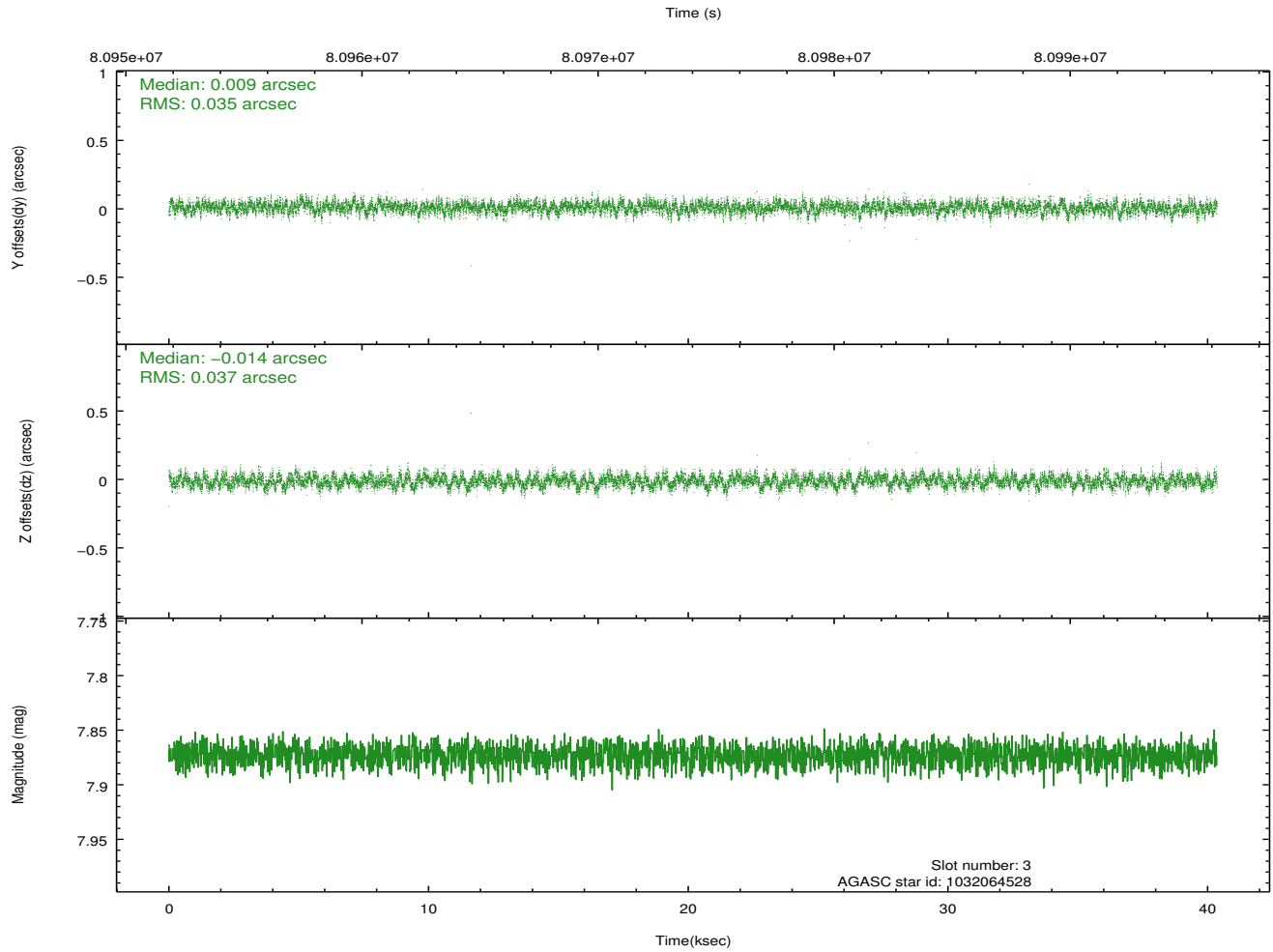
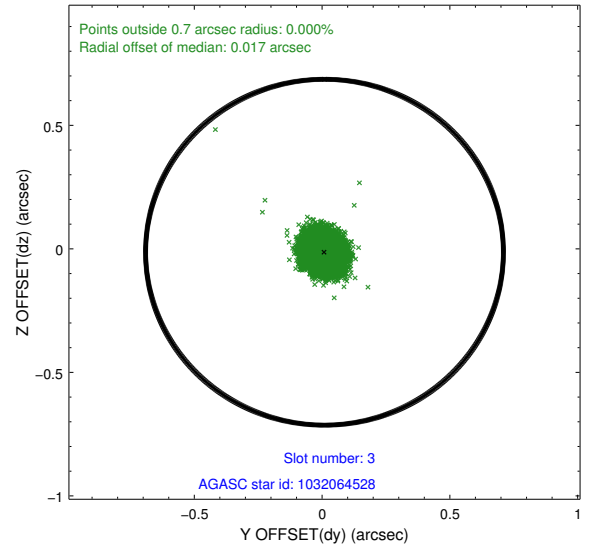
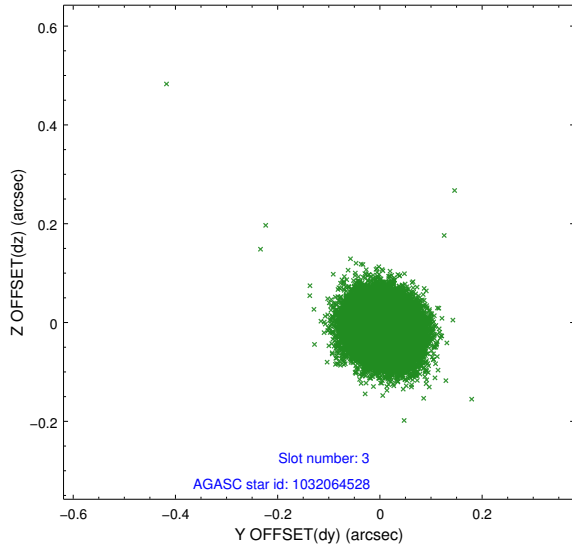
Slot Statistics

slot	status	id	mag	n_pts	med_dy	med_dz	dr1	dr2	ra	dec	mean_y	mean_z
0	FID	ACIS-I-1	7.22	9845	0.092	-0.156	0.008	0.014	0.000000	0.000000	939.41	-1033.22
1	FID	ACIS-I-4	7.15	9844	-0.093	0.088	0.009	0.014	0.000000	0.000000	2158.67	868.08
2	FID	ACIS-I-5	7.23	9845	-0.098	0.139	0.007	0.013	0.000000	0.000000	-1808.80	864.67
3	GUIDE	1032064528	7.87	19688	0.009	-0.014	0.054	0.086	259.076580	-39.610595	-992.28	1036.02
4	GUIDE	1032067312	7.81	19689	-0.121	-0.054	0.061	0.098	258.048957	-39.760316	-1106.94	-1859.26
5	GUIDE	1032064704	8.53	19689	0.026	-0.042	0.058	0.095	258.960381	-39.623855	-1019.86	711.30
6	GUIDE	1032067112	9.75	19686	0.116	0.024	0.090	0.147	259.037898	-39.997002	336.92	611.93
7	GUIDE	1032067968	10.04	19672	-0.028	0.086	0.149	0.242	259.136699	-40.503071	2172.23	456.37

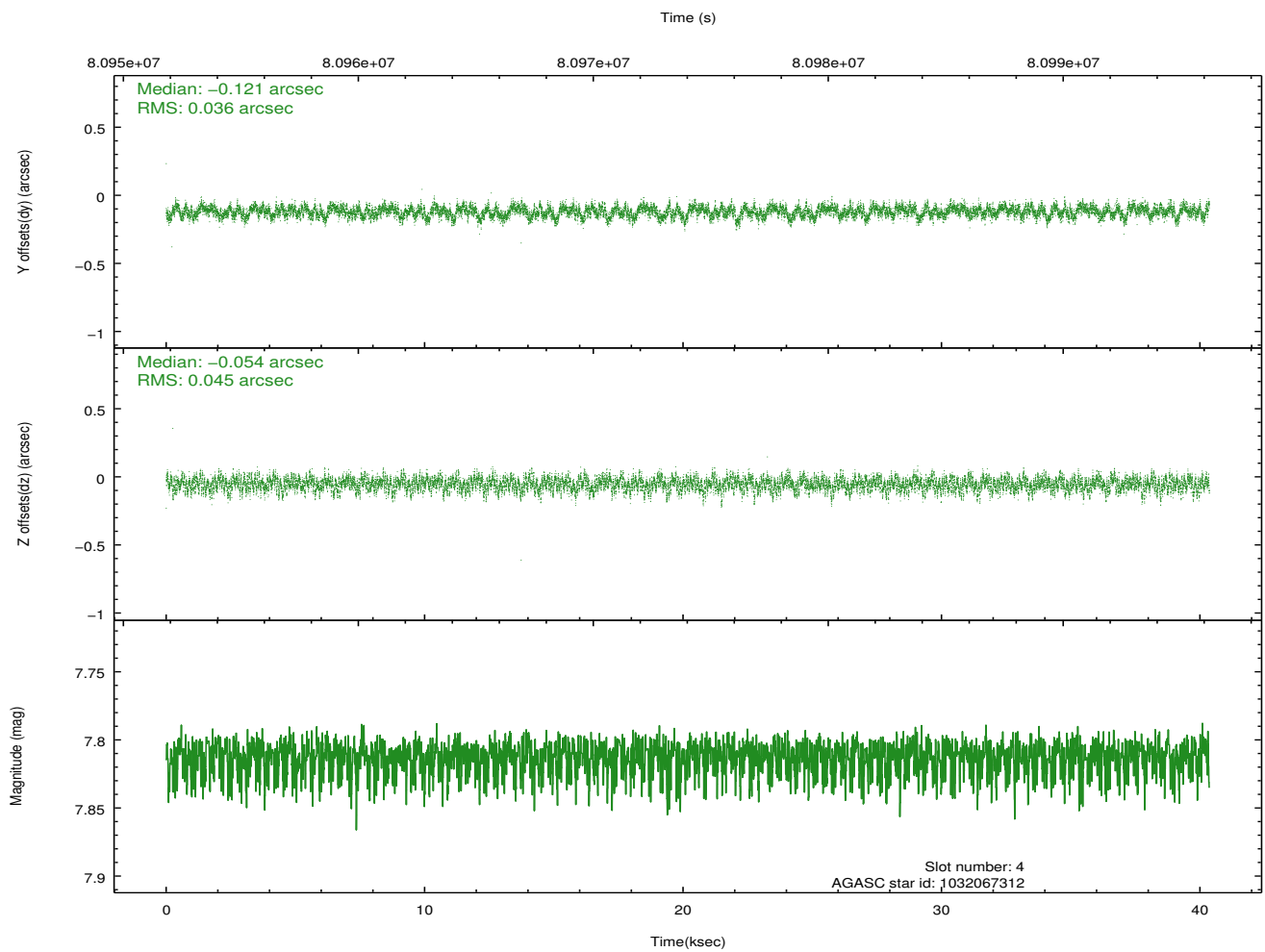
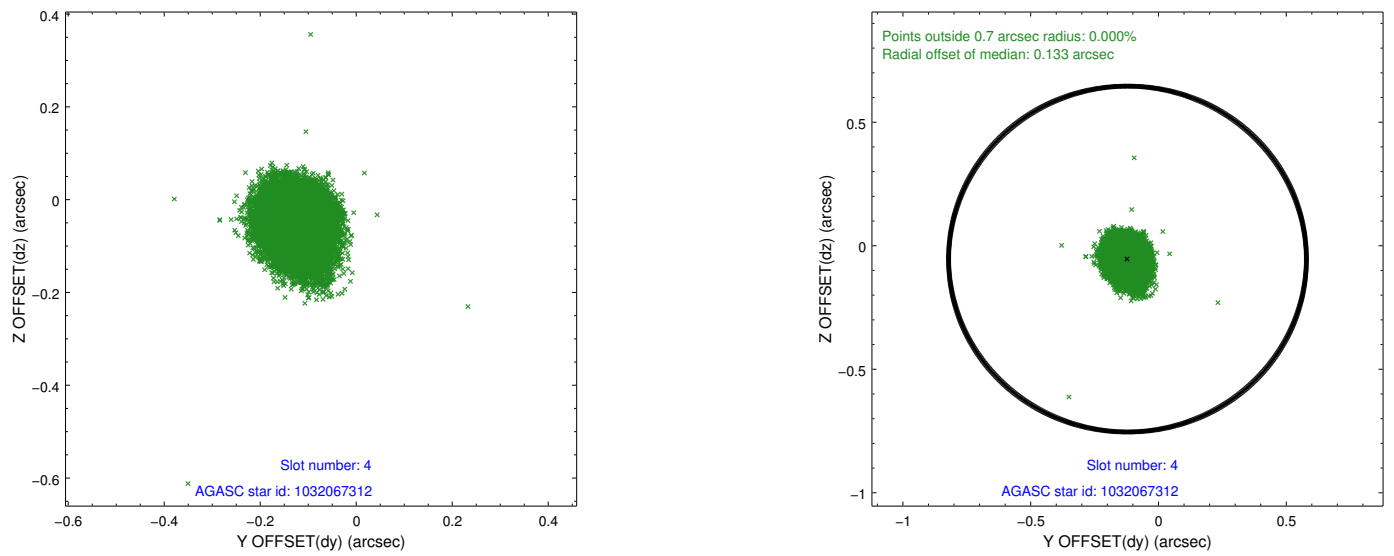
∞

2.4 Star Slots

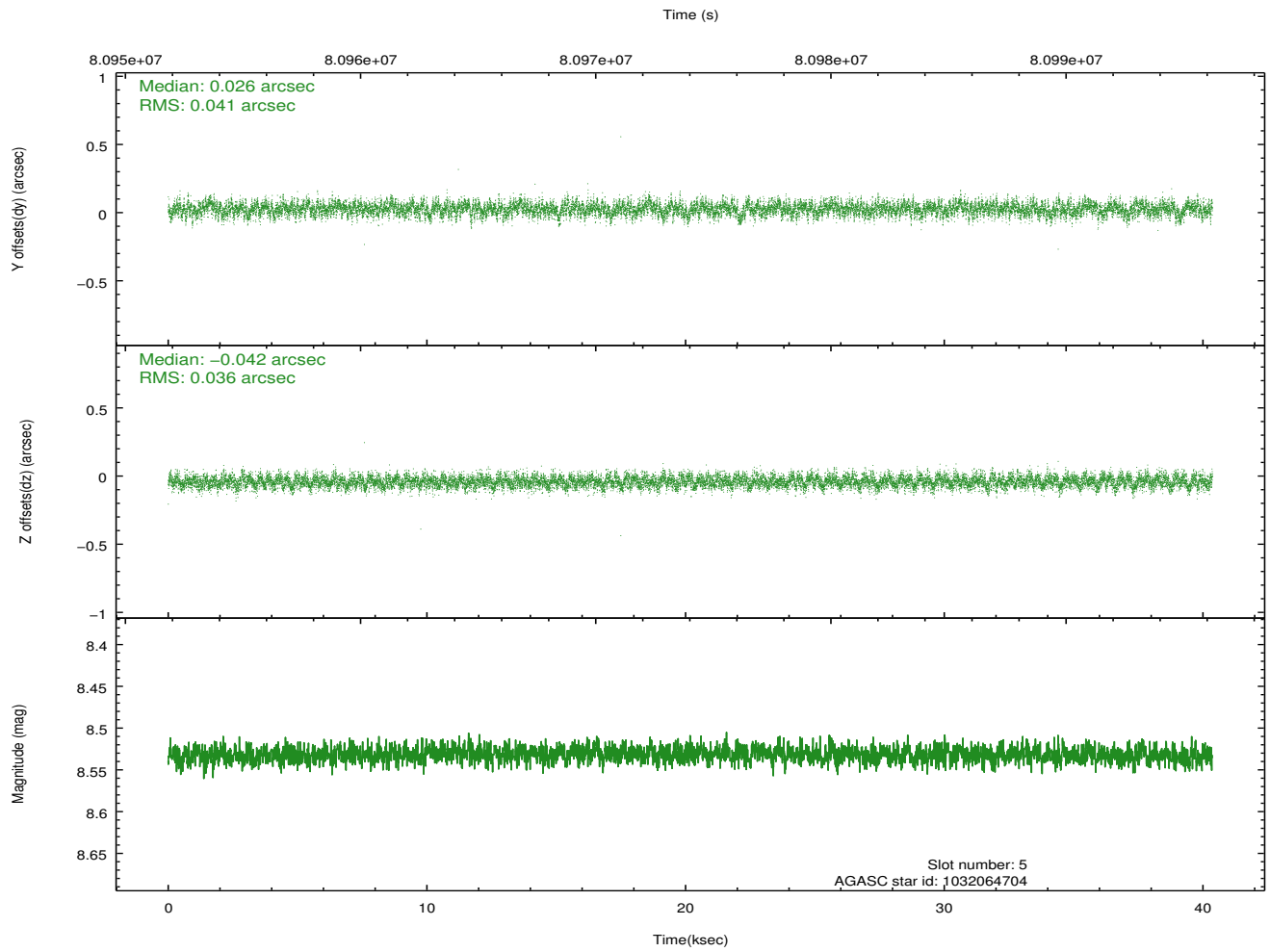
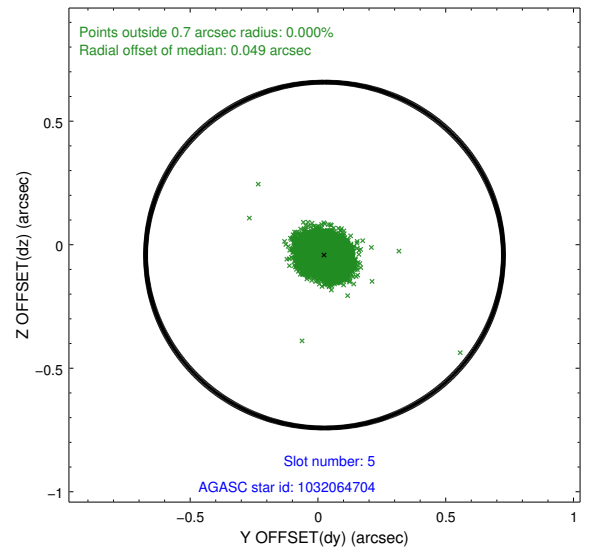
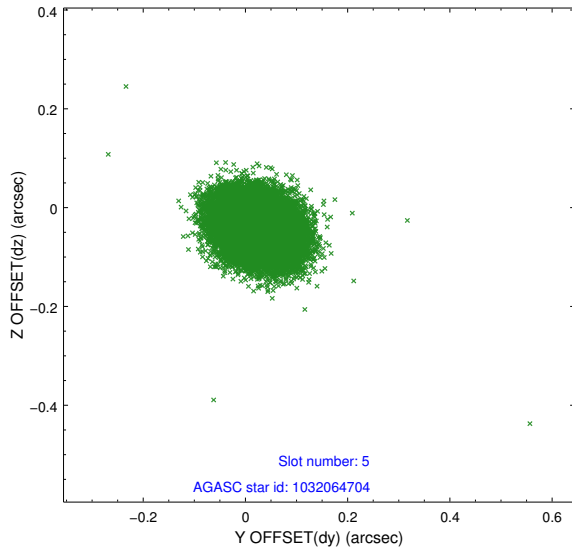
2.4.1 Slot 3



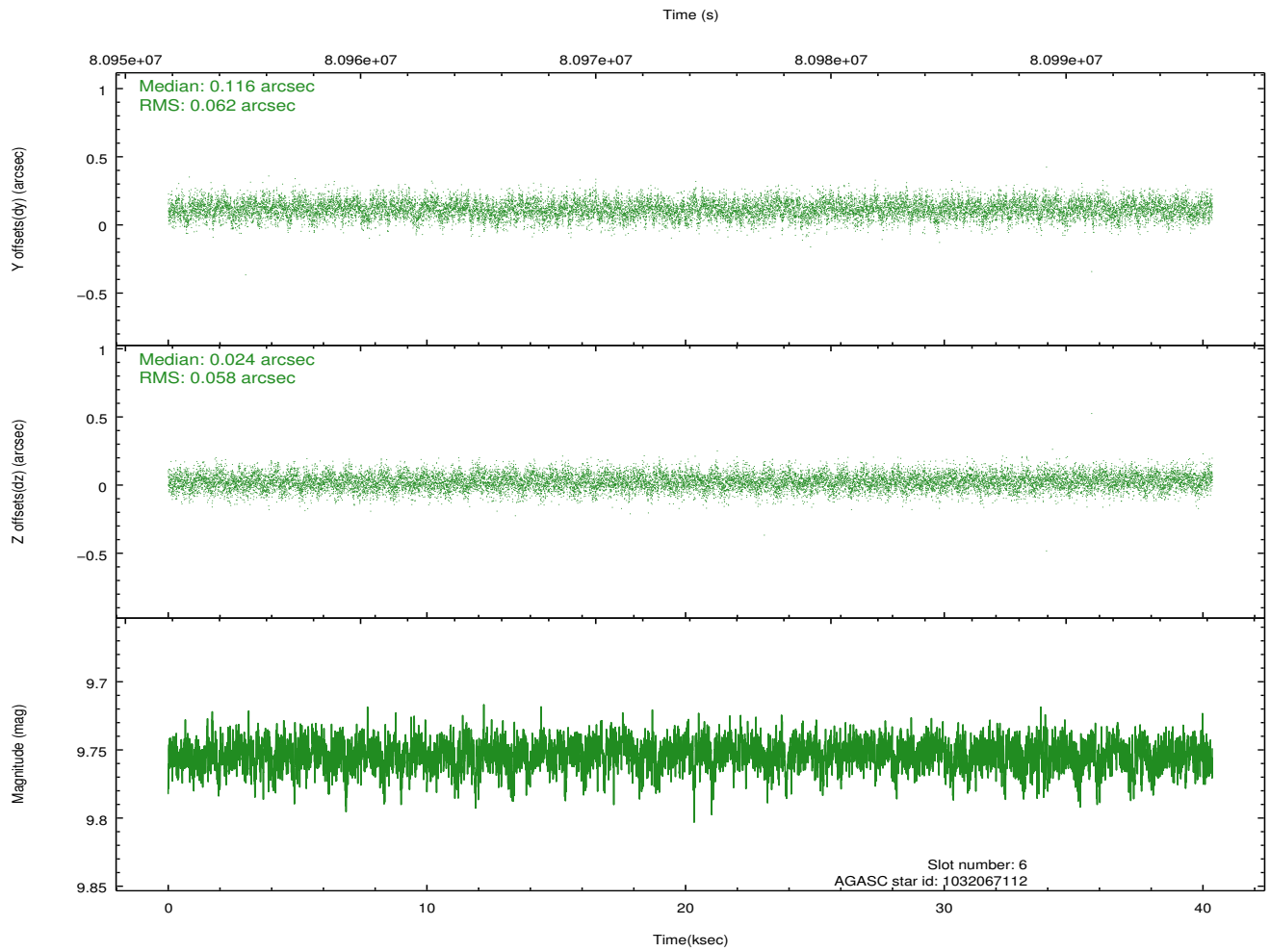
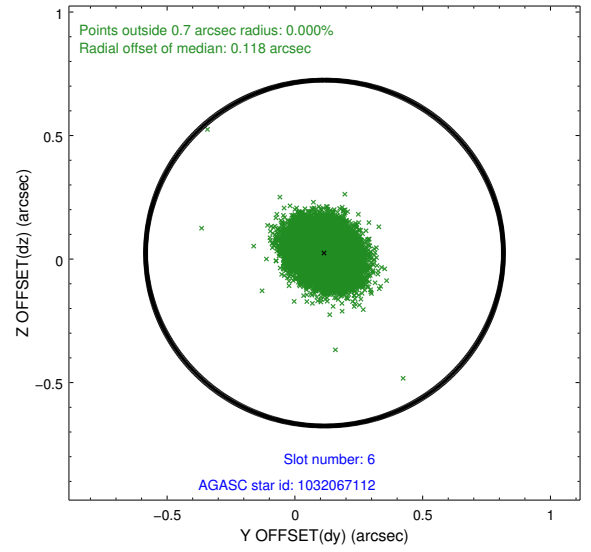
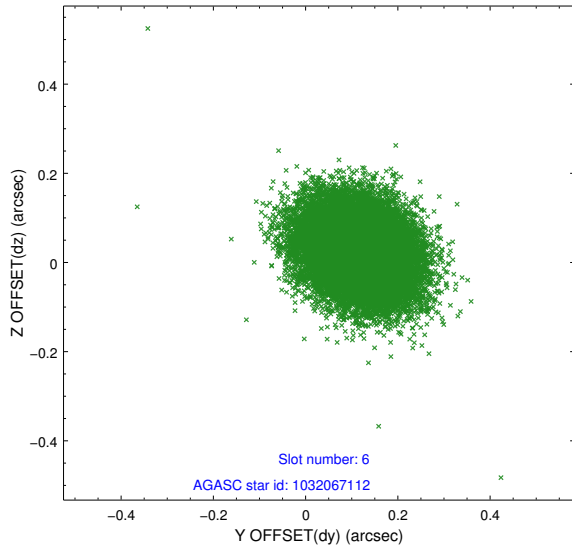
2.4.2 Slot 4



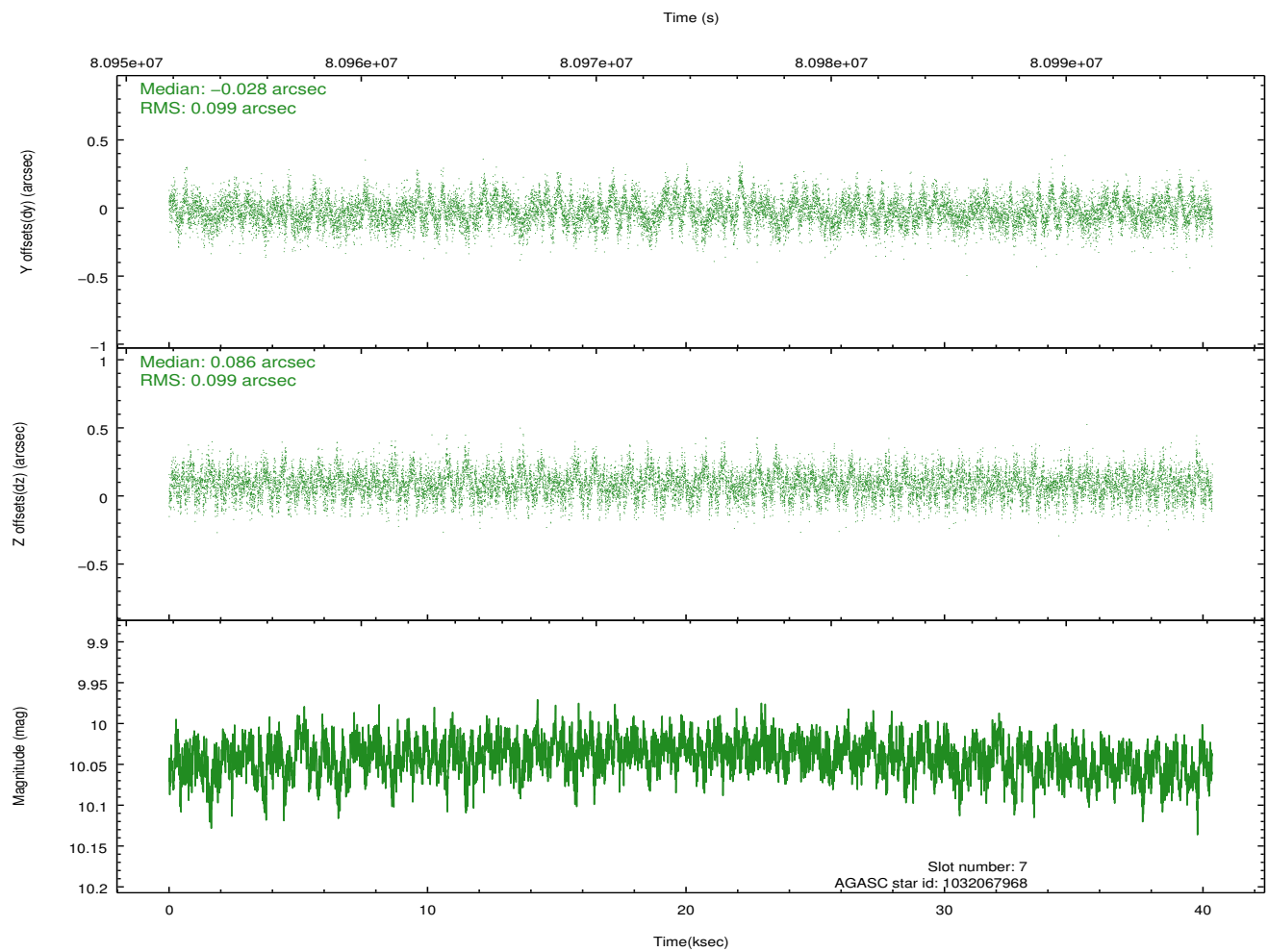
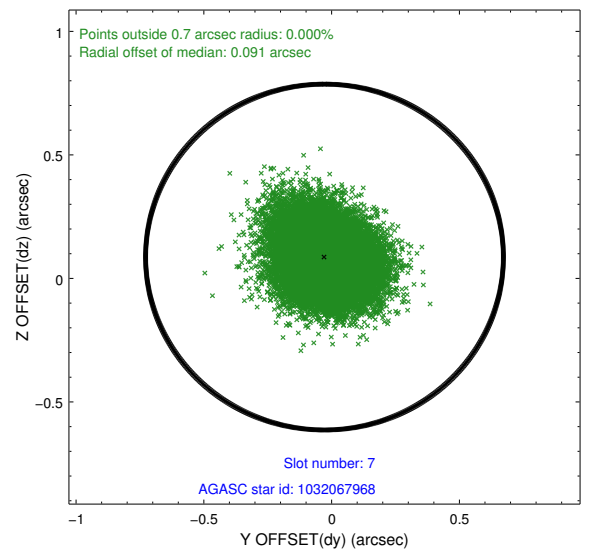
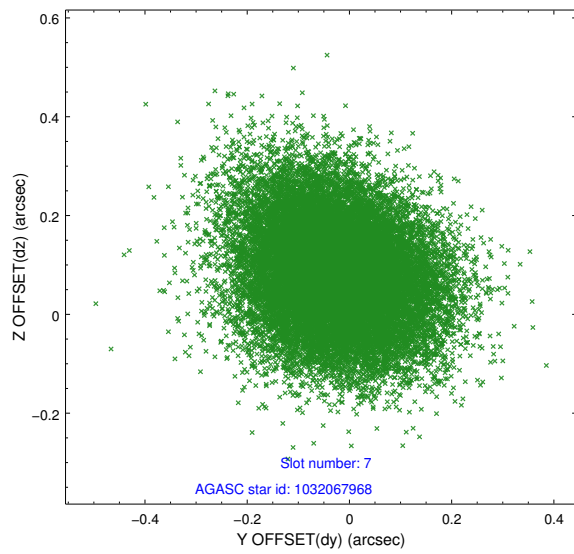
2.4.3 Slot 5



2.4.4 Slot 6

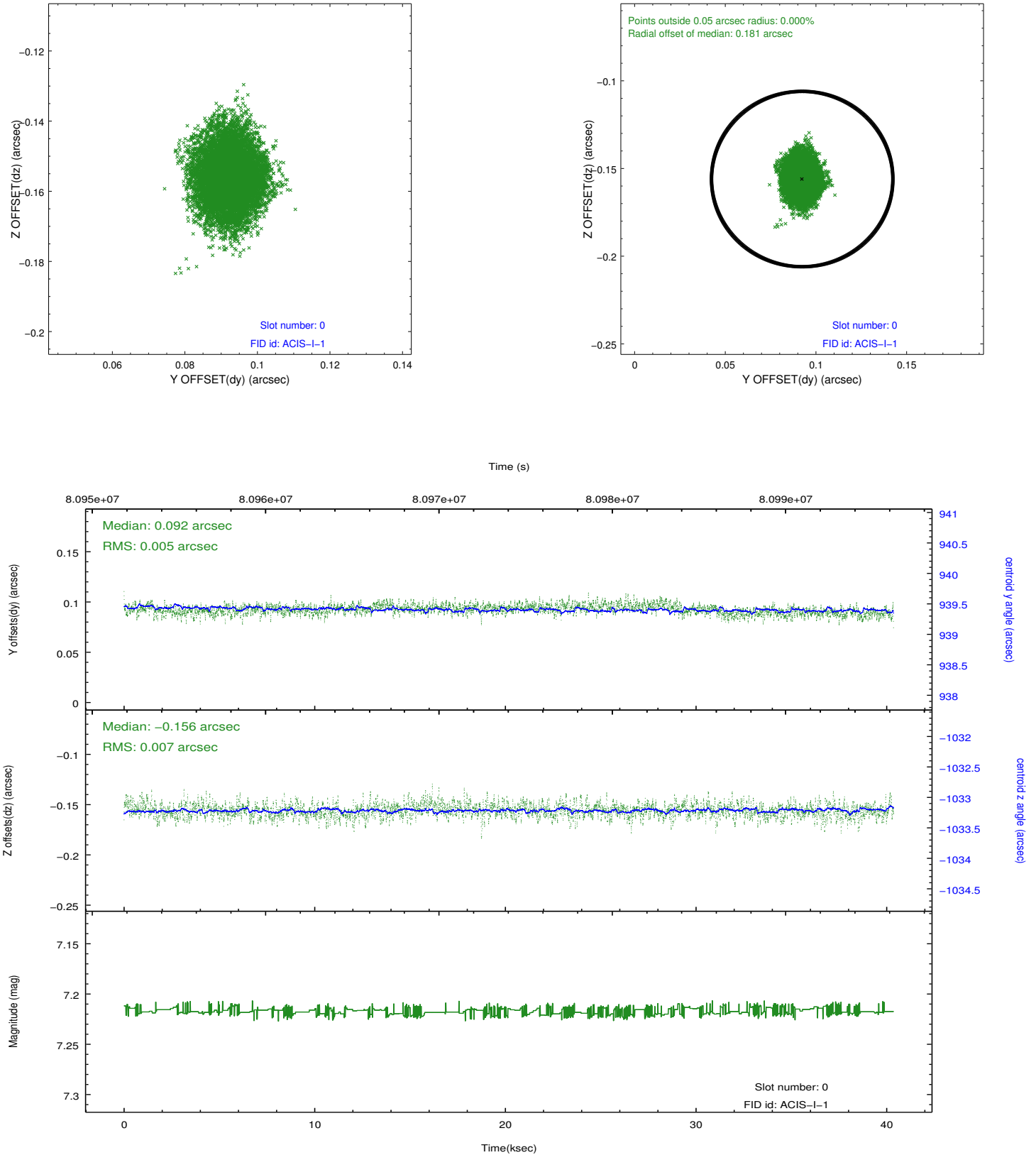


2.4.5 Slot 7

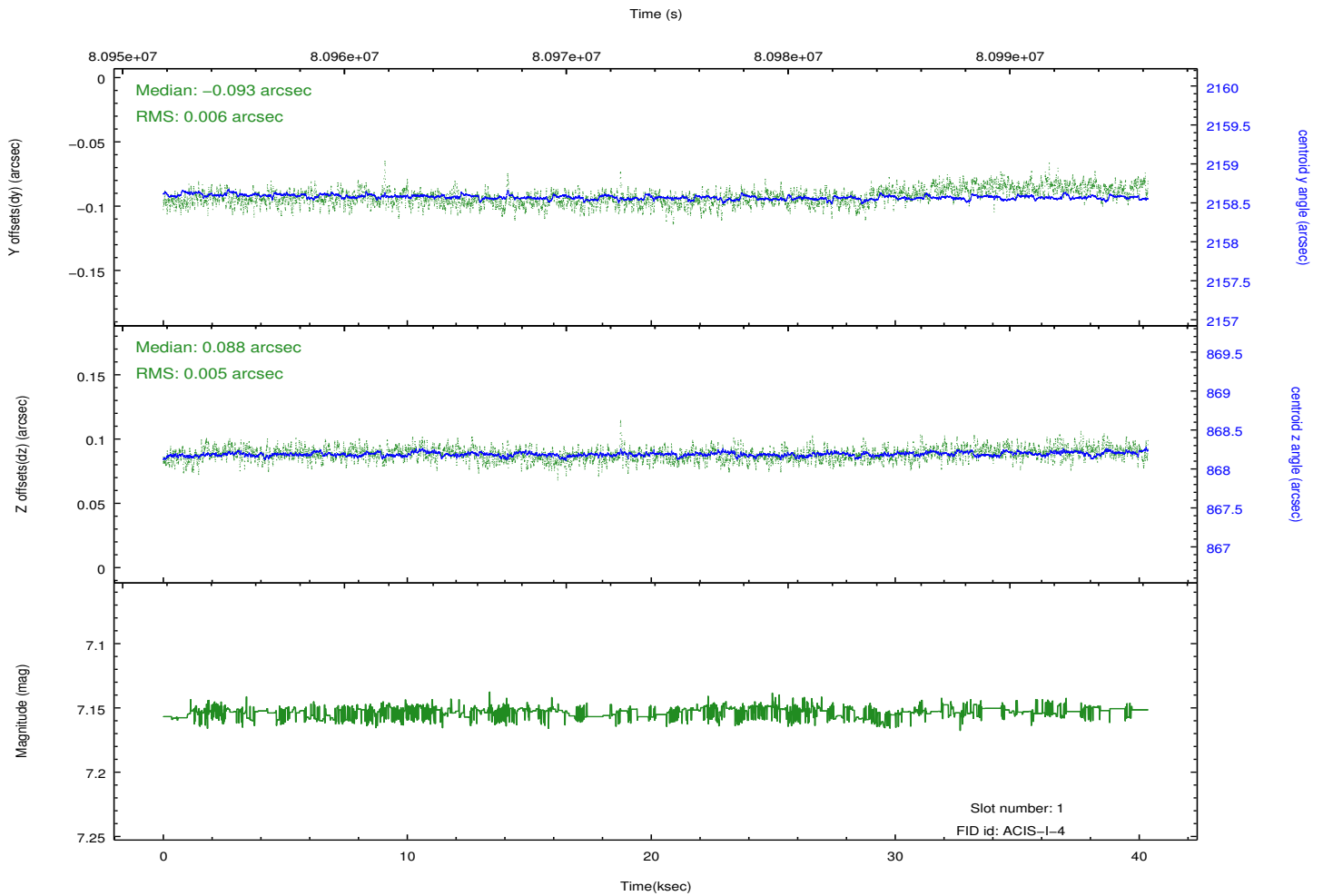
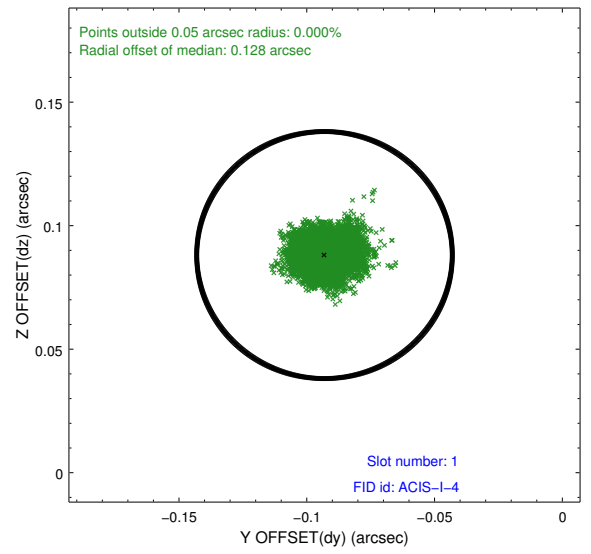
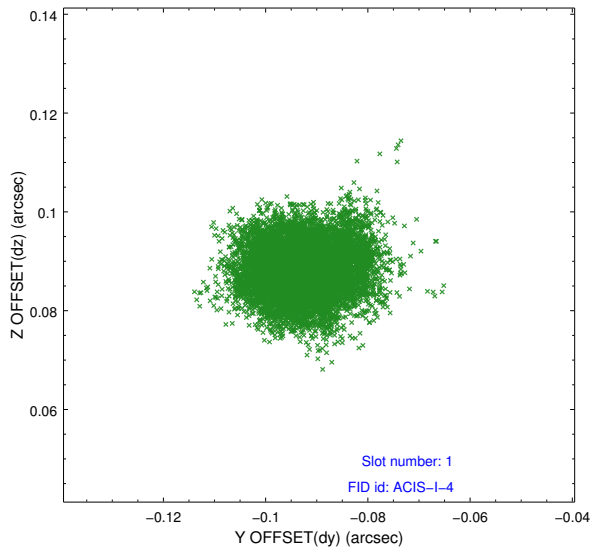


2.5 FID Slots

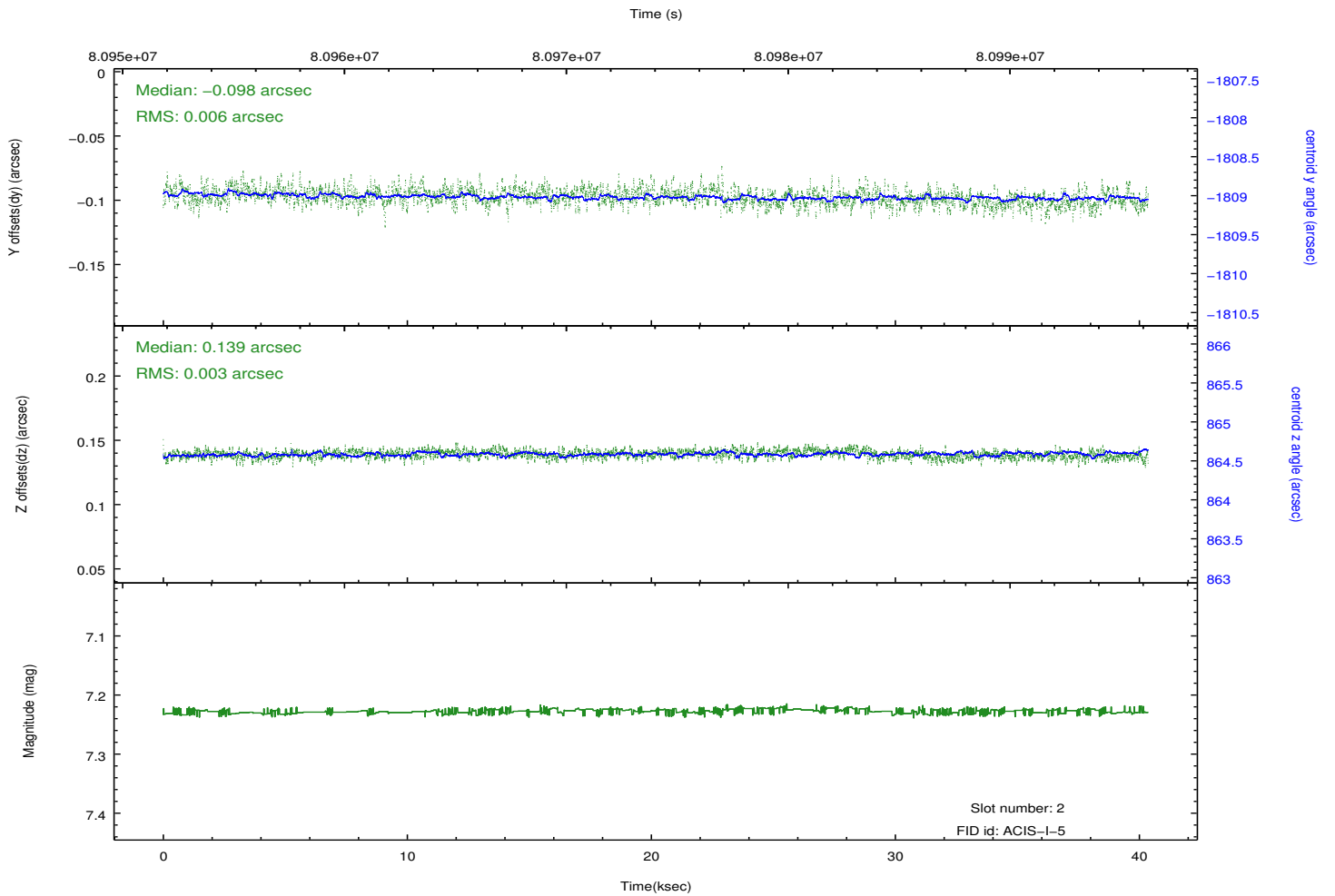
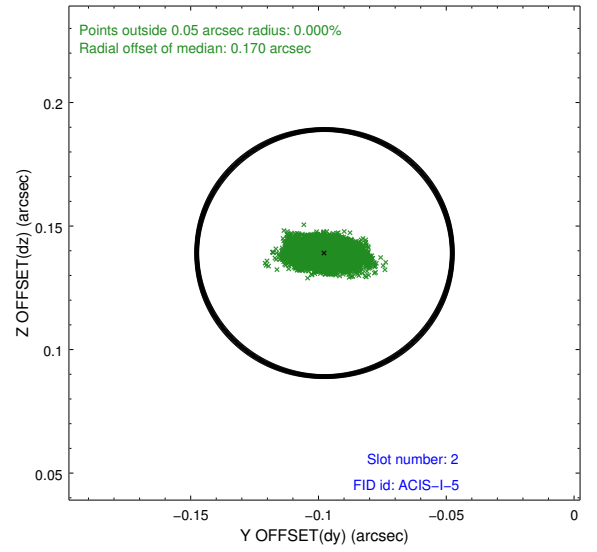
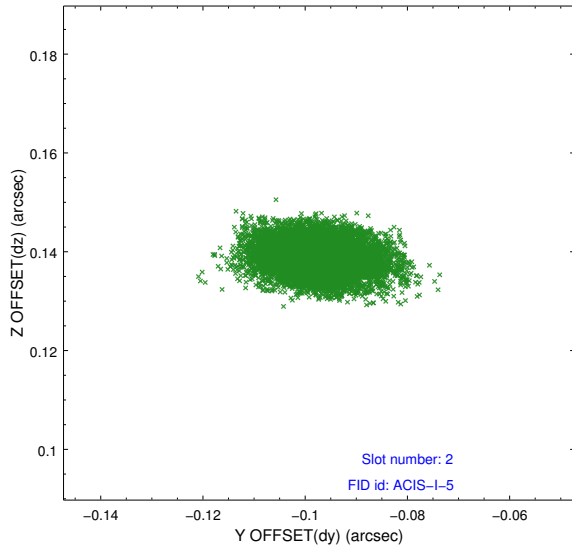
2.5.1 Slot 0



2.5.2 Slot 1



2.5.3 Slot 2



A Summary

A.1 Status

V&V Scientist	Jen Lauer
V&V Date (YYYY-MM-DD)	2012.09.05
V&V Edition	1
V&V Disposition and Status	OK
V&V Charge Time	38.963

A.2 Comments