

V&V Reference Report

L2 ASCDS Version : 8.4.4

Observation 7567 - L2 Version 3
Chandra X-Ray Center

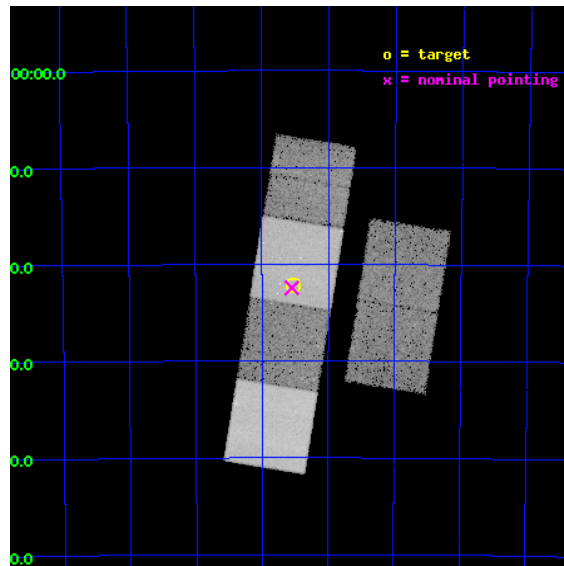
L2 Processing Date : Apr 21 2012

Contents

1	Front	2
2	OBI	3
2.1	OBI	3
2.1.1	Images	3
2.1.2	Bias	3
2.1.3	Parameters	4
2.1.4	Events	4
2.2	Compared Parameters	5
2.3	Aspect	6
2.4	Star Slots	9
2.4.1	Slot 3	9
2.4.2	Slot 4	10
2.4.3	Slot 5	11
2.4.4	Slot 6	12
2.4.5	Slot 7	13
2.5	FID Slots	14
2.5.1	Slot 0	14
2.5.2	Slot 1	15
2.5.3	Slot 2	16
A	Summary	17
A.1	Status	17
A.2	Comments	17

1 Front

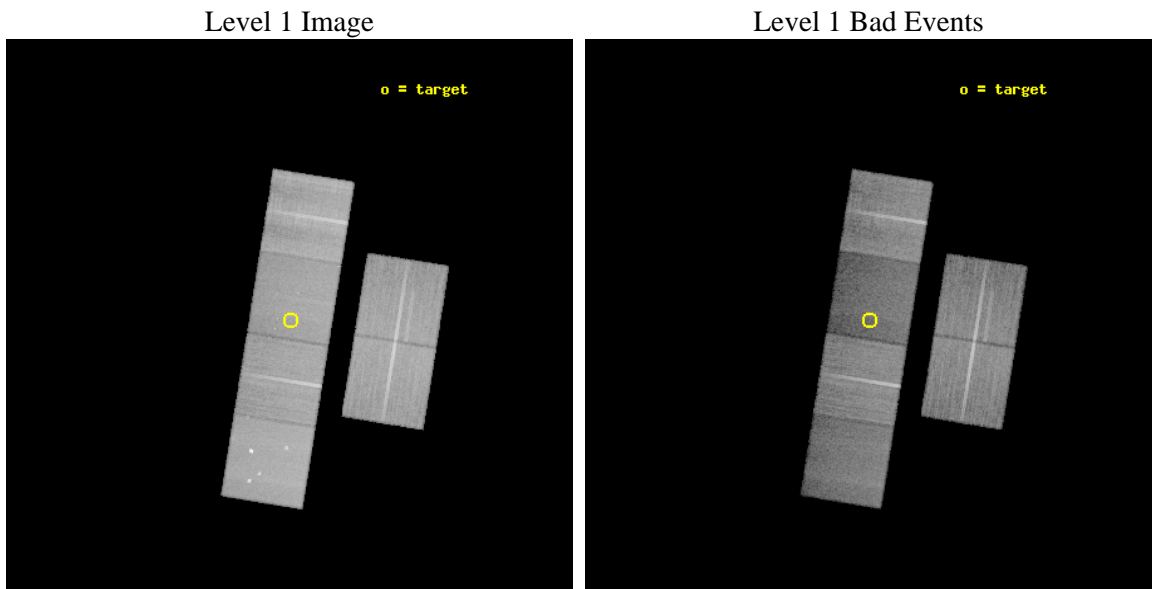
seq_num	500699	Sequence number
obs_id	7567	Observation id
title	A Search for Jet Breaks in Long GRB afterglows	Proposal title
observer	Professor Gordon Garmire	Principal investigator
object	GRB 060729	Source name
dtycycle	0	
cycle	P	events from which exps? Prim/Second/Both
ra_targ	95.380417	Observer's specified target RA [deg]
dec_targ	-62.370389	Observer's specified target Dec [deg]
ra_nom	95.387261718994	Nominal RA [deg]
dec_nom	-62.374065776228	Nominal Dec [deg]
roll_nom	279.16269445256	Nominal Roll [deg]
revision	3	Processing version of data
ontime	28043.444804013	Sum of GTIs [s]
livetime	27688.341820169	Livetime [s]
ontime2	28037.003973126	Sum of GTIs [s]
ontime3	28036.839733481	Sum of GTIs [s]
ontime5	28043.403764009	Sum of GTIs [s]
ontime6	28043.362724006	Sum of GTIs [s]
ontime7	28043.444804013	Sum of GTIs [s]
ontime8	28043.280644	Sum of GTIs [s]
l2events	283936	Number of level 2 events



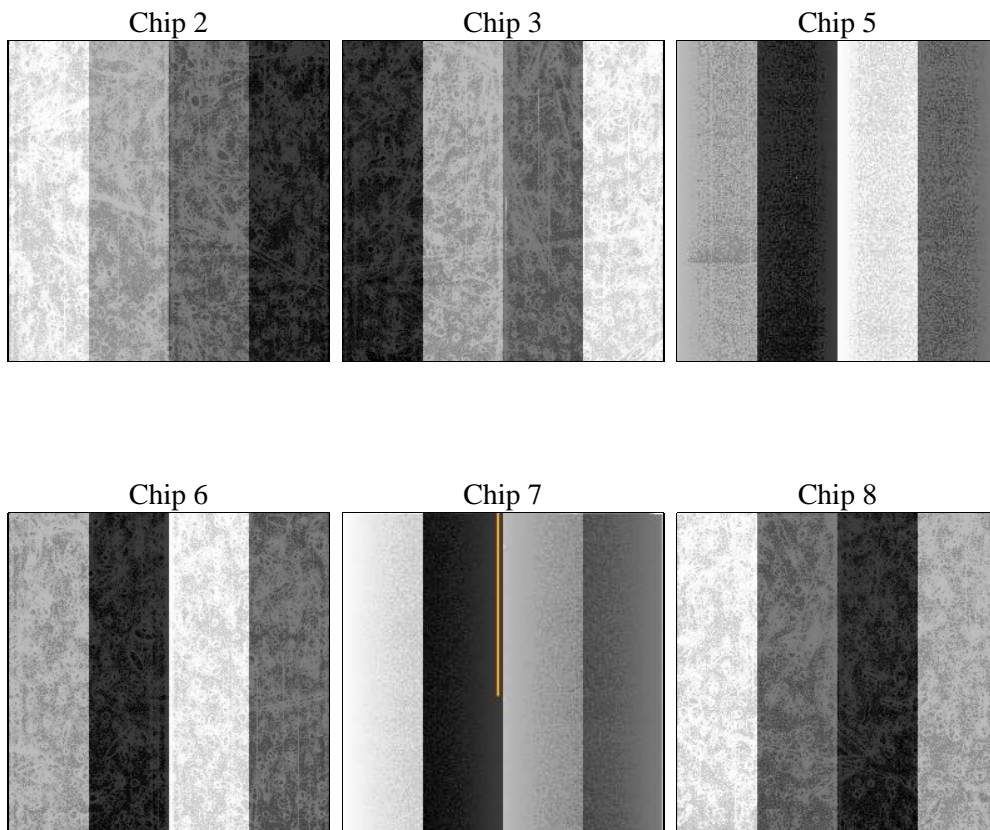
2 OBI

2.1 OBI

2.1.1 Images



2.1.2 Bias



2.1.3 Parameters

obi_num	0	Obi number	sched_exp_time	28000.000000	[s] Scheduled observation exposure time
ascdsver	8.4.4	Processing system revision	ontime	28043.444804013	Sum of GTIs [s]
caldbver	4.4.9	 	ontime2	28037.003973126	Sum of GTIs [s]
date	2012-04-21T14:49:57	Date and time of file creation	ontime3	28036.839733481	Sum of GTIs [s]
revision	3	Processing version of data	ontime5	28043.403764009	Sum of GTIs [s]
			ontime6	28043.362724006	Sum of GTIs [s]
			ontime7	28043.444804013	Sum of GTIs [s]
			ontime8	28043.280644	Sum of GTIs [s]
			l1events	1313257	Number of level 1 events

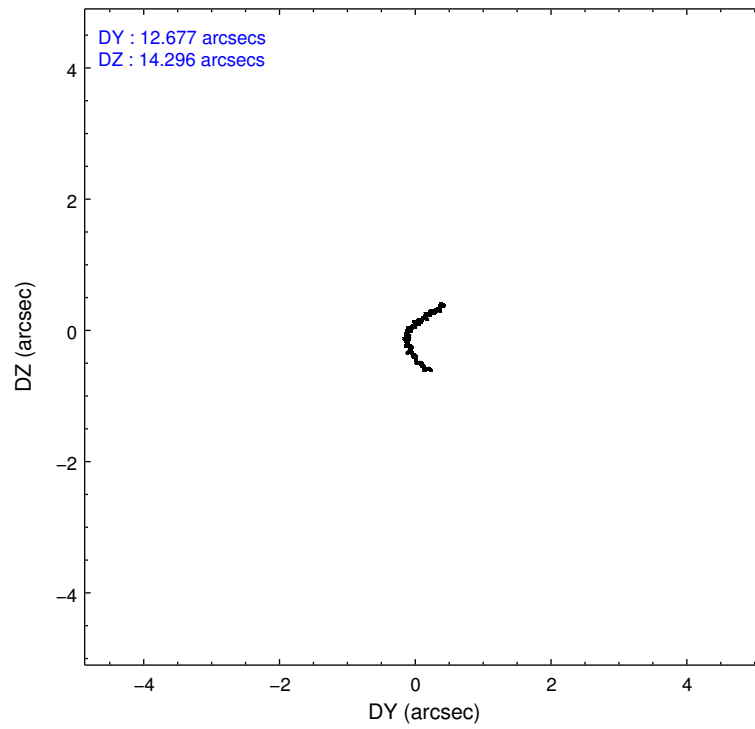
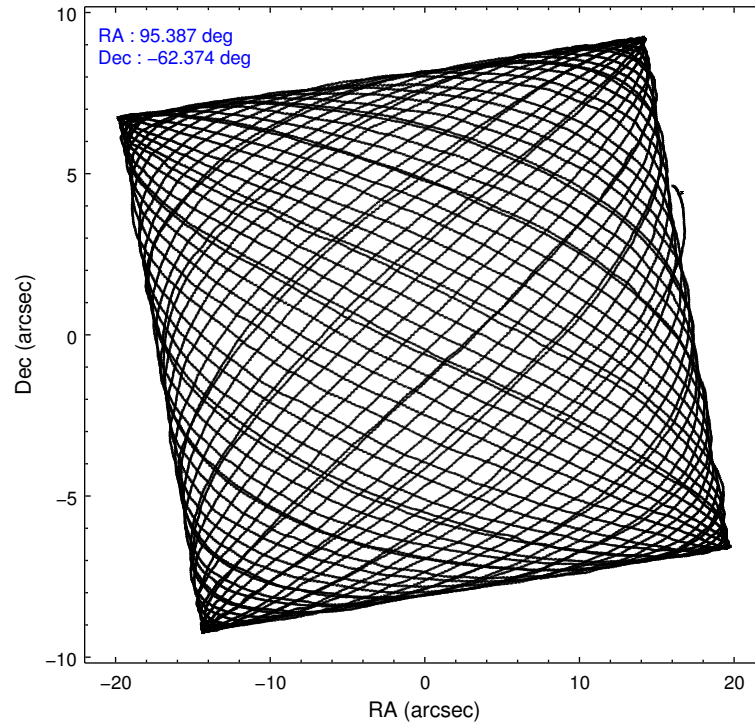
2.1.4 Events

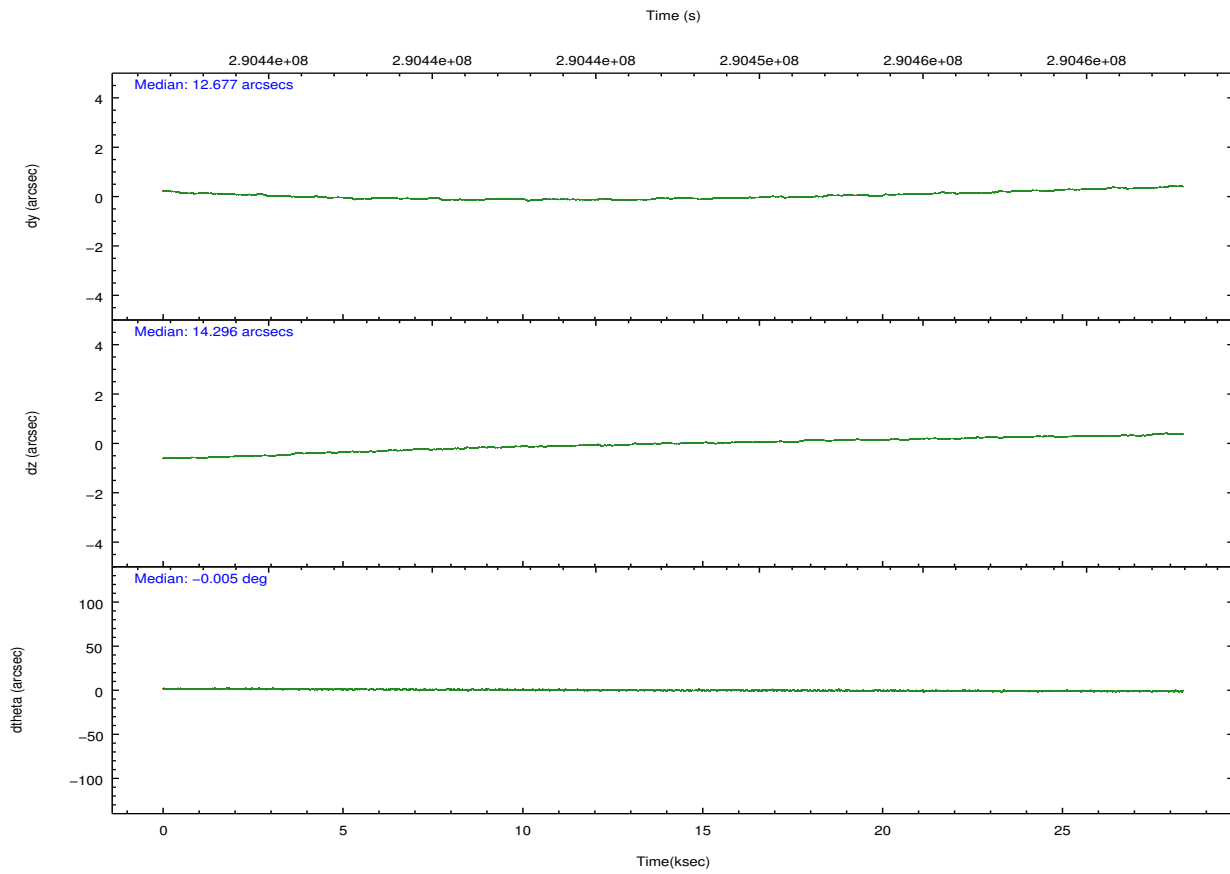
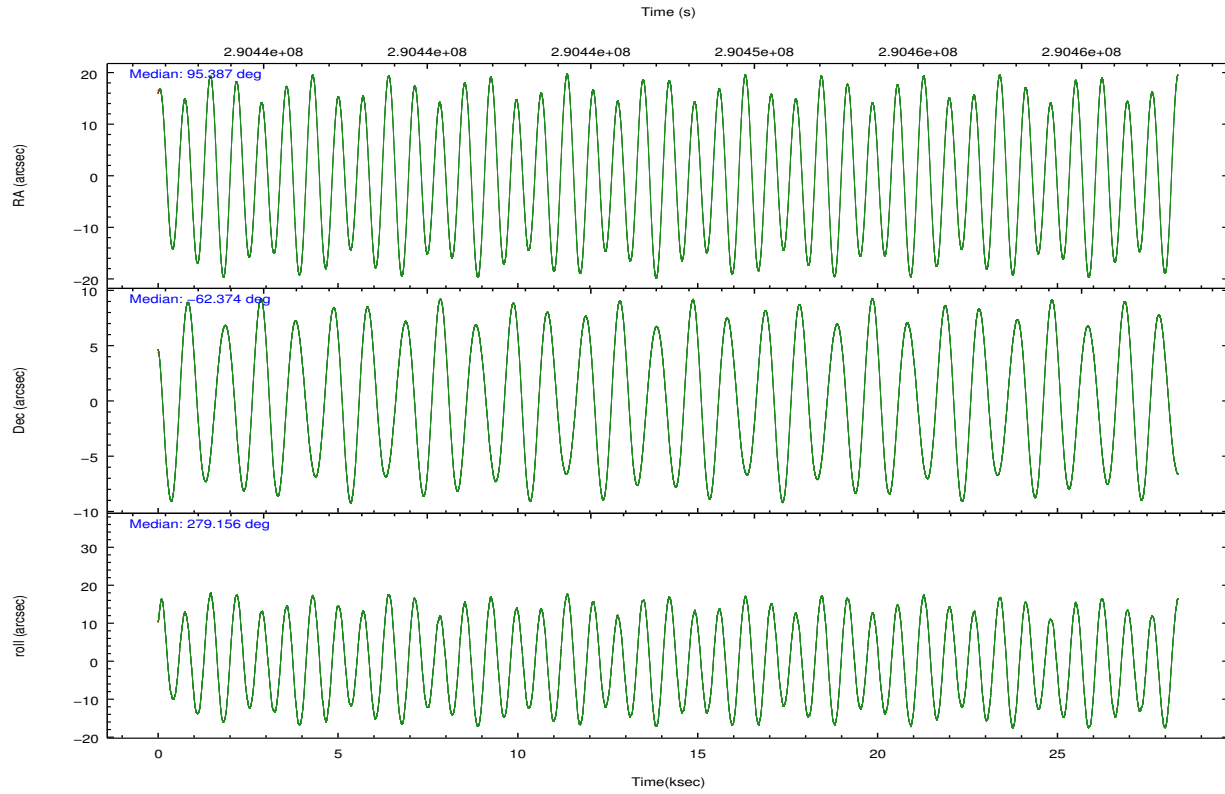
	ccd 2	ccd 3	ccd 5	ccd 6	ccd 7	ccd 8		ccd 2	ccd 3	ccd 5	ccd 6	ccd 7	ccd 8
level 1 events	216607	193124	254542	207874	191086	250024	grade 0 events	6762	6412	19478	7388	10060	16626
rejected events	197798	175383	117217	187431	96080	188733		3%	3%	7%	3%	5%	6%
rejected %	91%	90%	46%	90%	50%	75%	grade 1 events	107	110	582	95	264	174
								0%	0%	0%	0%	0%	0%
							grade 2 events	4657	3813	39332	4575	20185	14338
								2%	1%	15%	2%	10%	5%
							grade 3 events	2017	2026	6133	2243	9183	6902
								0%	1%	2%	1%	4%	2%
							grade 4 events	2107	2055	5969	2142	8925	6309
								0%	1%	2%	1%	4%	2%
							grade 5 events	5650	6604	20487	6760	20297	10364
								2%	3%	8%	3%	10%	4%
							grade 6 events	3266	3435	66428	4098	46659	17118
								1%	1%	26%	1%	24%	6%
							grade 7 events	192041	168669	96133	180573	75513	178193
								88%	87%	37%	86%	39%	71%

2.2 Compared Parameters

Parameter	Planned	Actual	Parameter	Planned	Actual
Instrument	ACIS	ACIS	Obspar format version number	7	7
Detector	ACIS-235678	ACIS-235678	Obspar file type	PREDICTED	ACTUAL
Grating	NONE	NONE	Obspar update status	NONE	UPDATED
Data mode	VFAINT	VFAINT	Number of optional ACIS chips dropped	0	0
Observation mode	POINTING	POINTING	On-chip summing requested	N	N
[deg] Pointing RA	95.349417	95.38726171899364	Subarray requested	NONE	NONE
[deg] Pointing Dec	-62.353091	-62.37406577622846	Alternating exposures requested	N	N
[deg] Pointing Roll	278.972541	279.1626944525573	[s] Primary exposure time	0.000000	3.2
[mm] SIM focus pos	-0.684267	-0.6828225247311905			
[mm] SIM defocus	0	0.001444936568705701			
[mm] SIM translation stage pos	-190.132523	-190.1400660498719			
[mm] SIM translation stage offset	0	0.00754346686406393			
[s] Observation start time (MET)	290433533.184000	290432389.29808			
Observation start date	2007-03-16T11:57:48	2007-03-16T11:39:49			
[s] Observation end time (MET)	290461533.184000	290462199.88699			
Observation end date	2007-03-16T19:44:28	2007-03-16T19:56:39			
Read mode	TIMED	TIMED			

2.3 Aspect



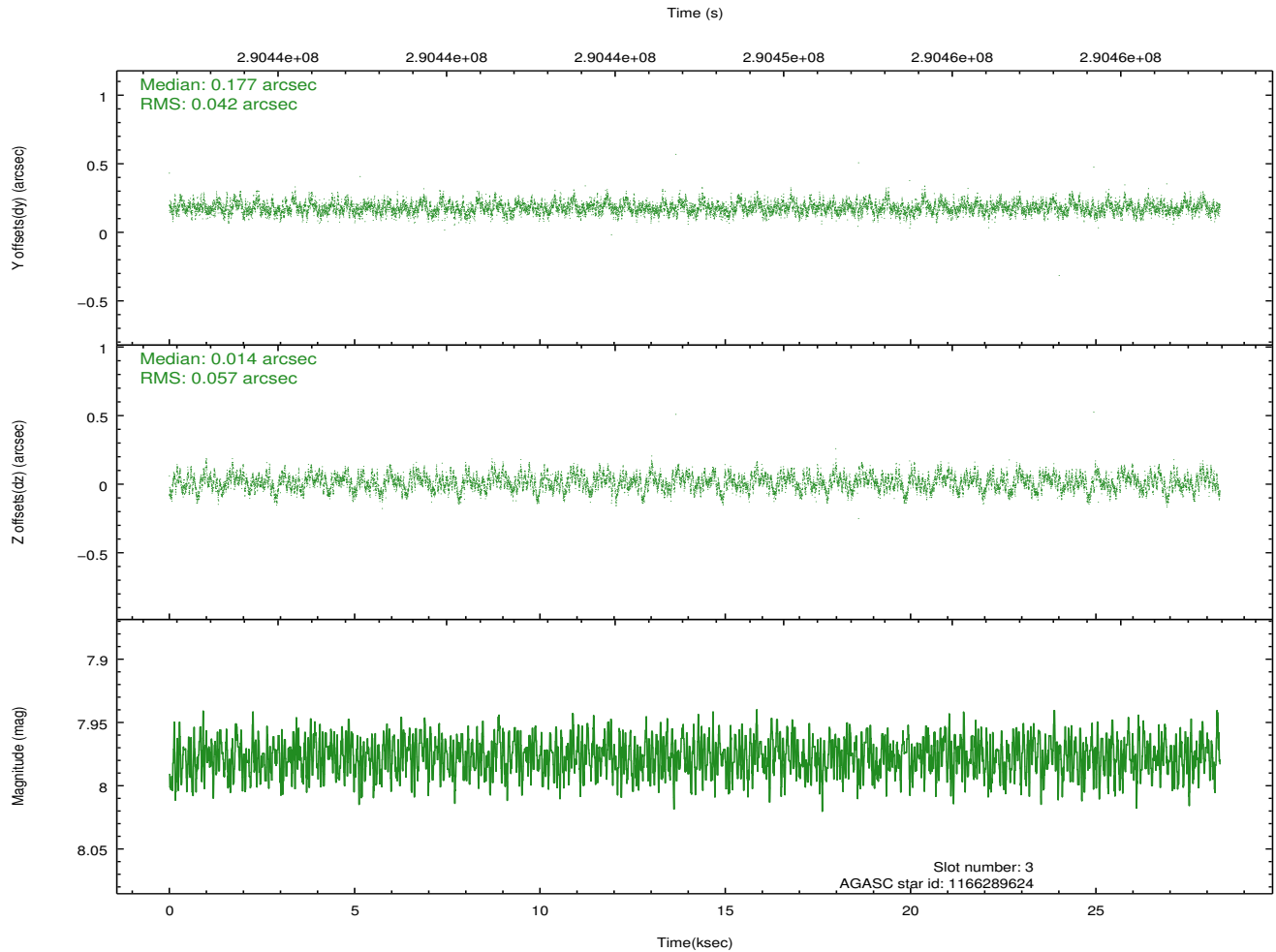
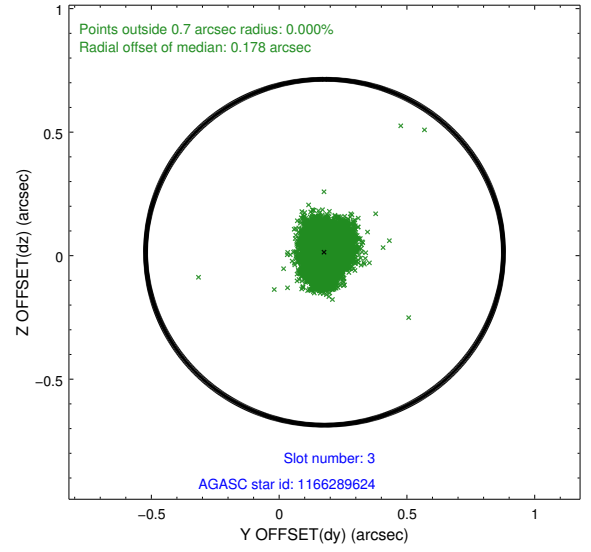
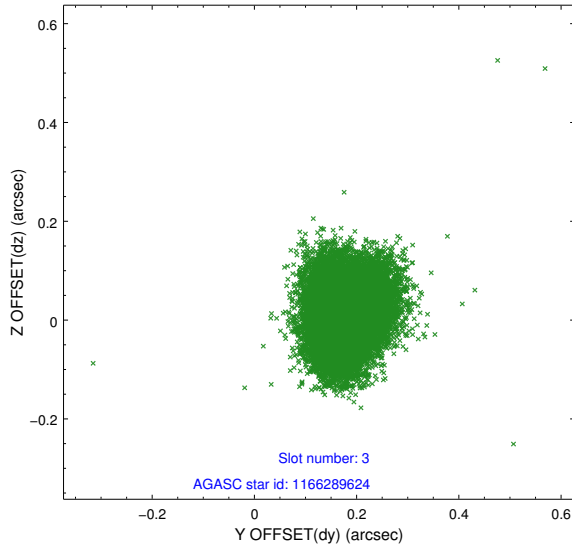


Slot Statistics

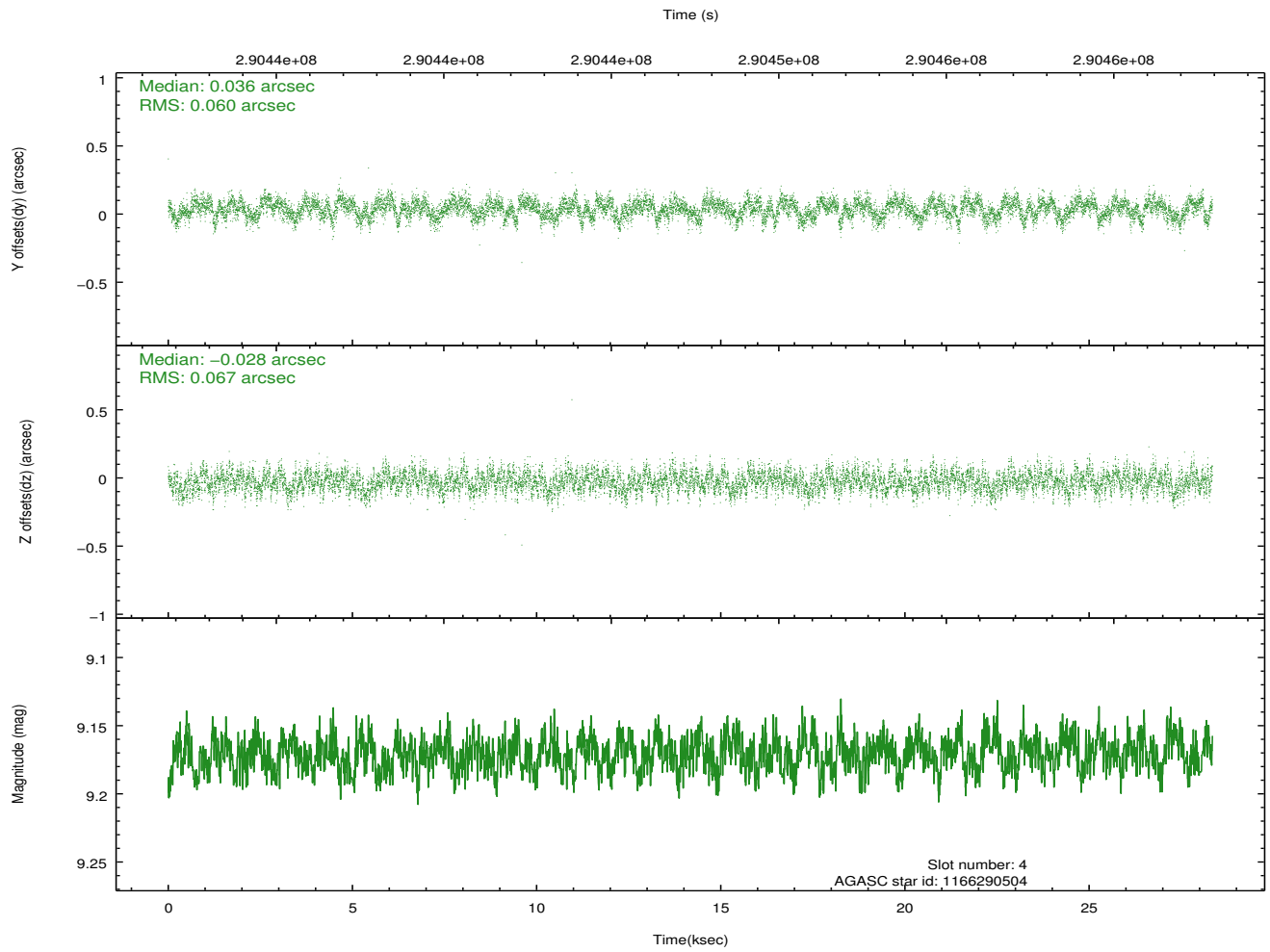
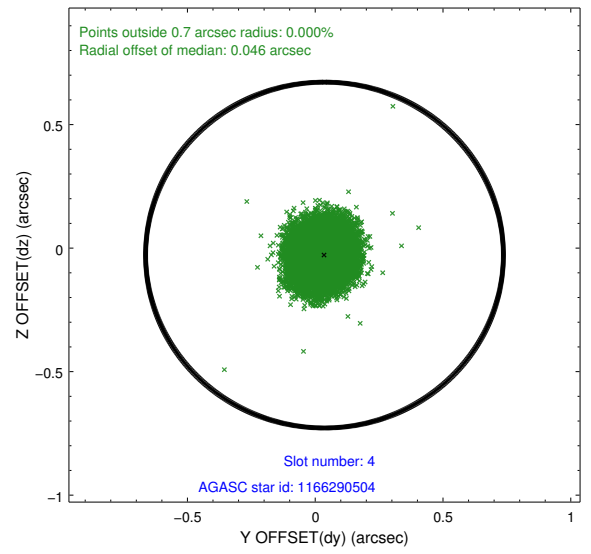
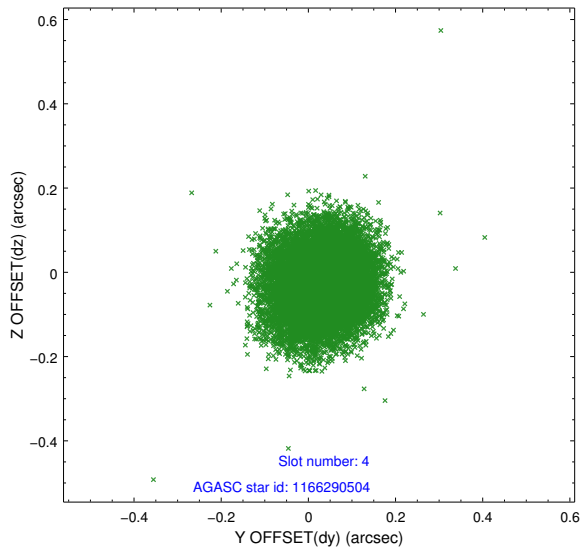
slot	status	id	mag	n_pts	med_dy	med_dz	dr1	dr2	ra	dec	mean_y	mean_z
0	FID	ACIS-S-2	7.09	6915	-0.039	-0.045	0.010	0.017	0.000000	0.000000	-765.65	-1735.66
1	FID	ACIS-S-4	7.20	6915	0.156	0.031	0.010	0.024	0.000000	0.000000	2147.77	172.83
2	FID	ACIS-S-5	7.23	6914	-0.150	0.022	0.011	0.018	0.000000	0.000000	-1818.51	166.56
3	GUIDE	1166289624	7.98	13829	0.177	0.014	0.076	0.122	95.229966	-62.354097	-26.98	-197.29
4	GUIDE	1166290504	9.17	13818	0.036	-0.028	0.096	0.155	94.421217	-62.304320	-404.48	-1508.09
5	GUIDE	1165770328	9.10	13821	-0.121	0.187	0.085	0.136	94.916512	-61.741093	-2288.80	-385.42
6	GUIDE	1165766936	9.07	13823	-0.016	-0.112	0.091	0.146	96.498055	-61.624413	-2267.80	2347.61
7	GUIDE	1166288232	8.45	13768	-0.076	-0.061	0.067	0.110	96.353495	-62.422658	520.53	1612.30

2.4 Star Slots

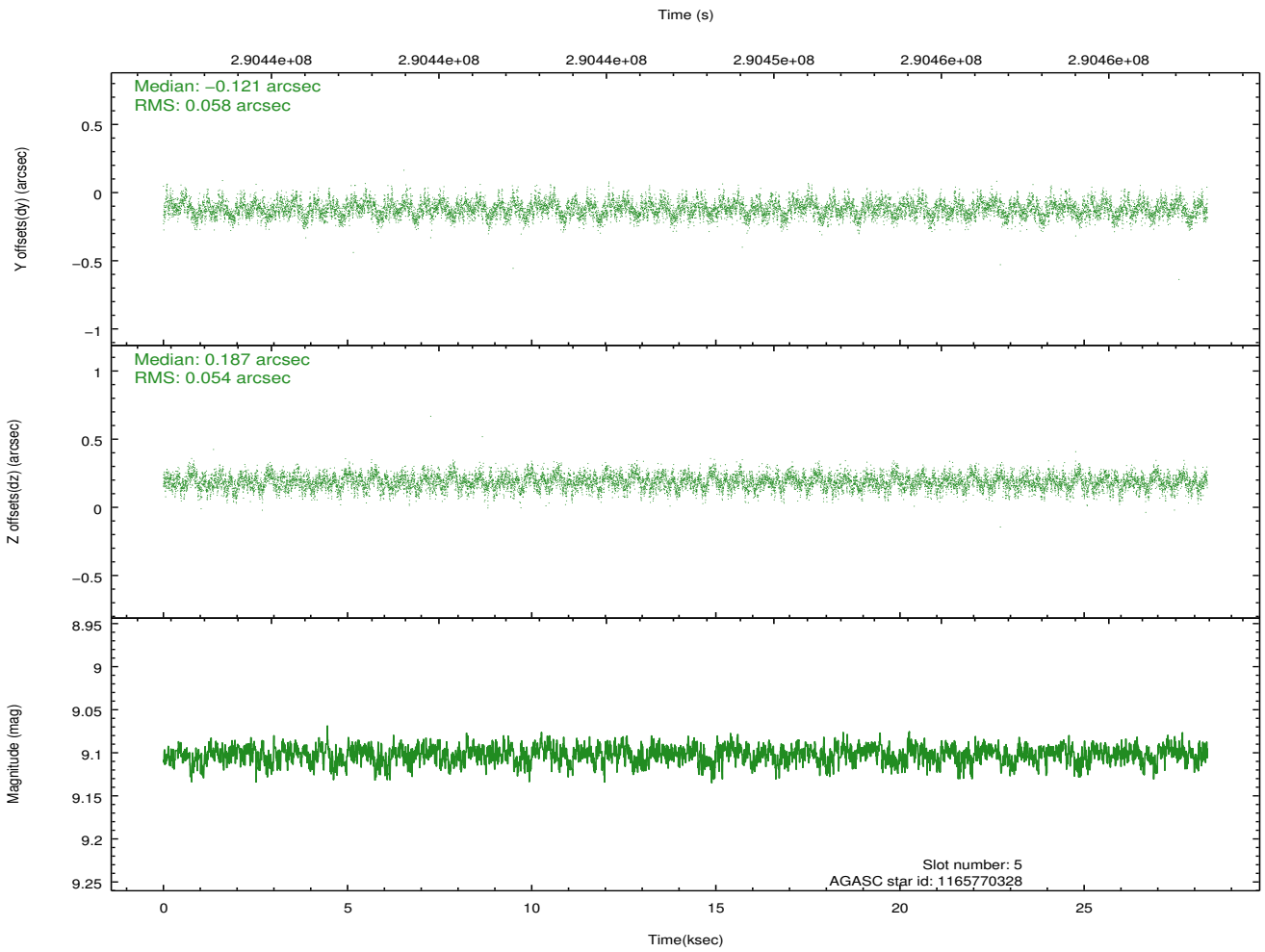
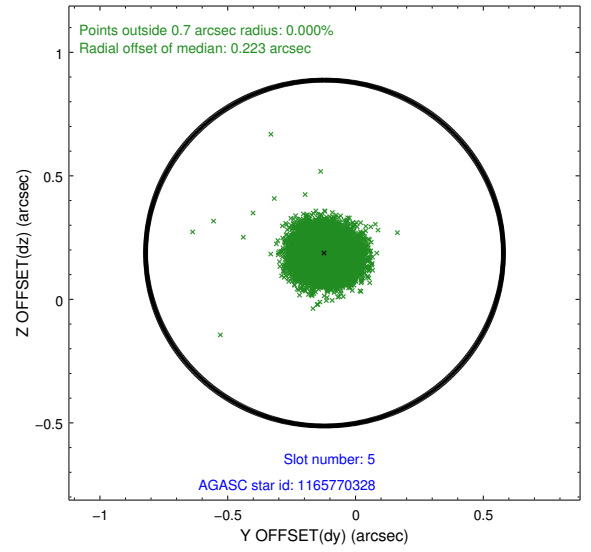
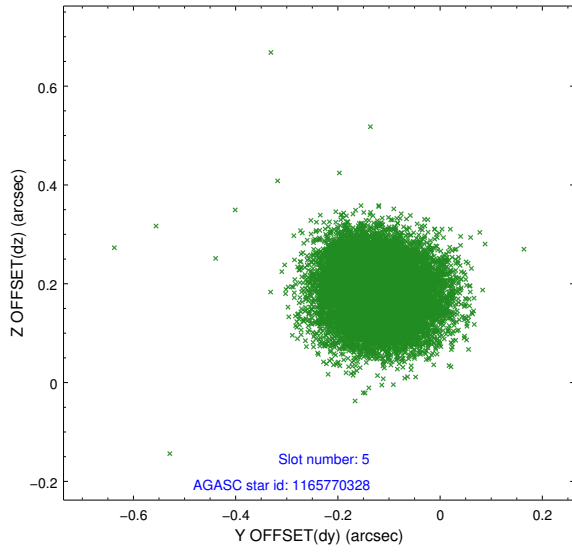
2.4.1 Slot 3



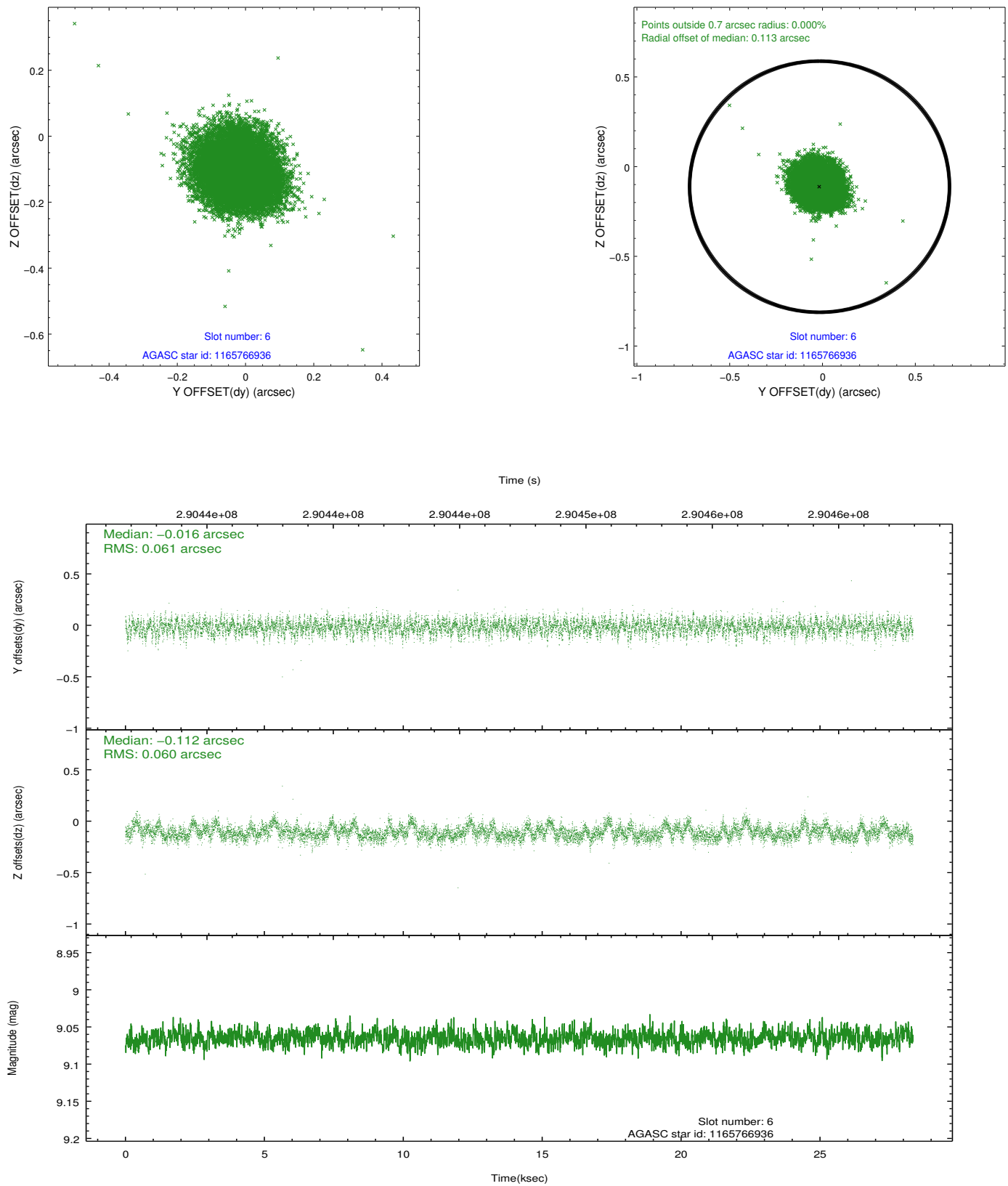
2.4.2 Slot 4



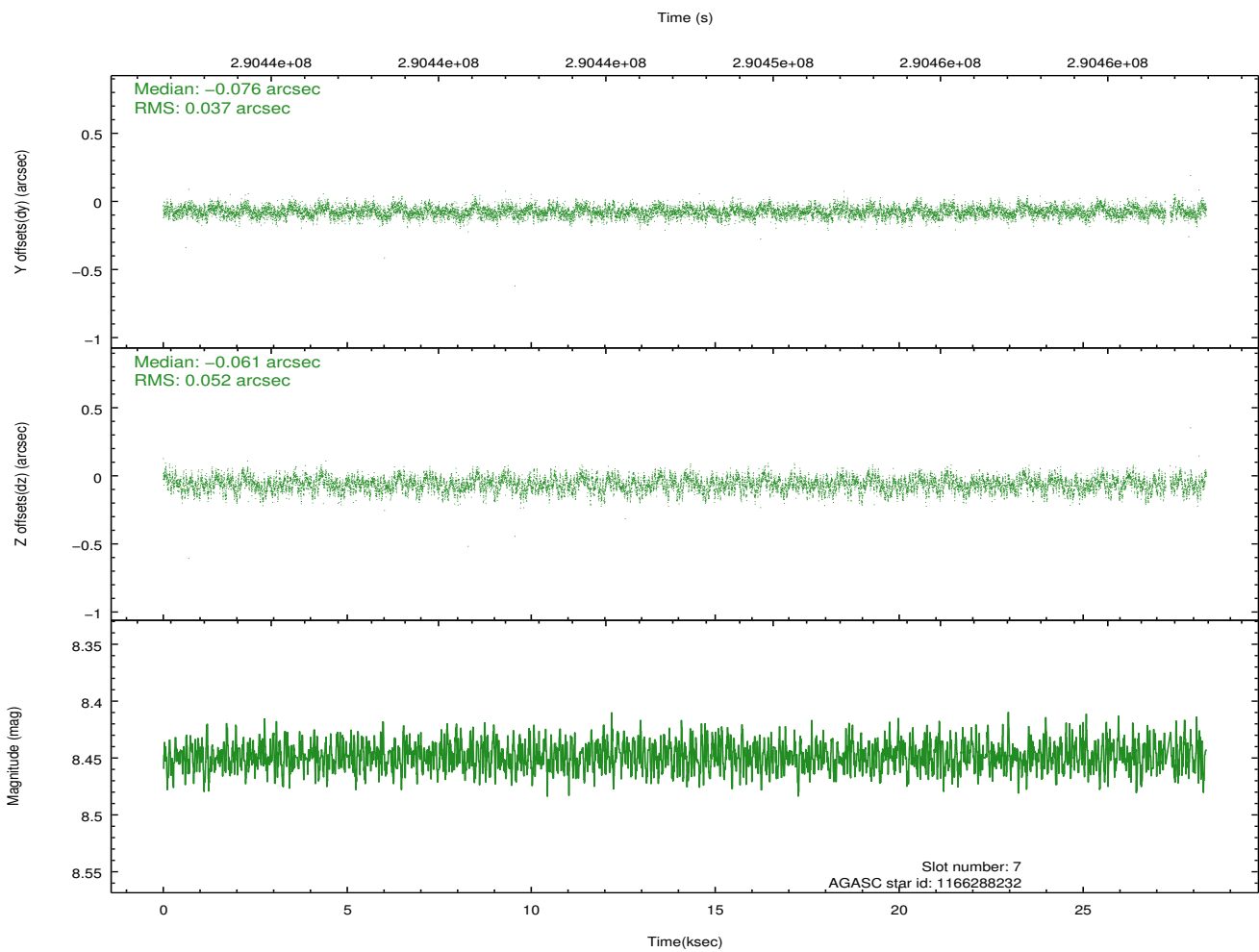
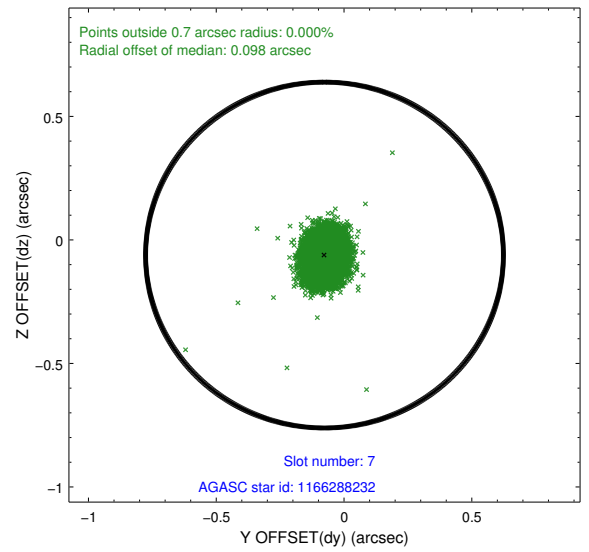
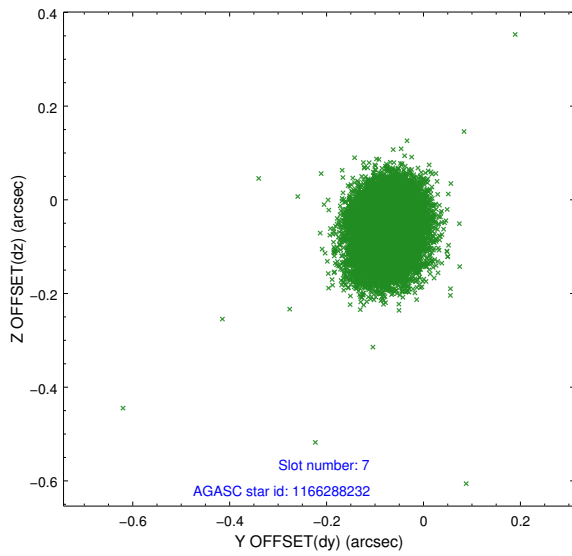
2.4.3 Slot 5



2.4.4 Slot 6

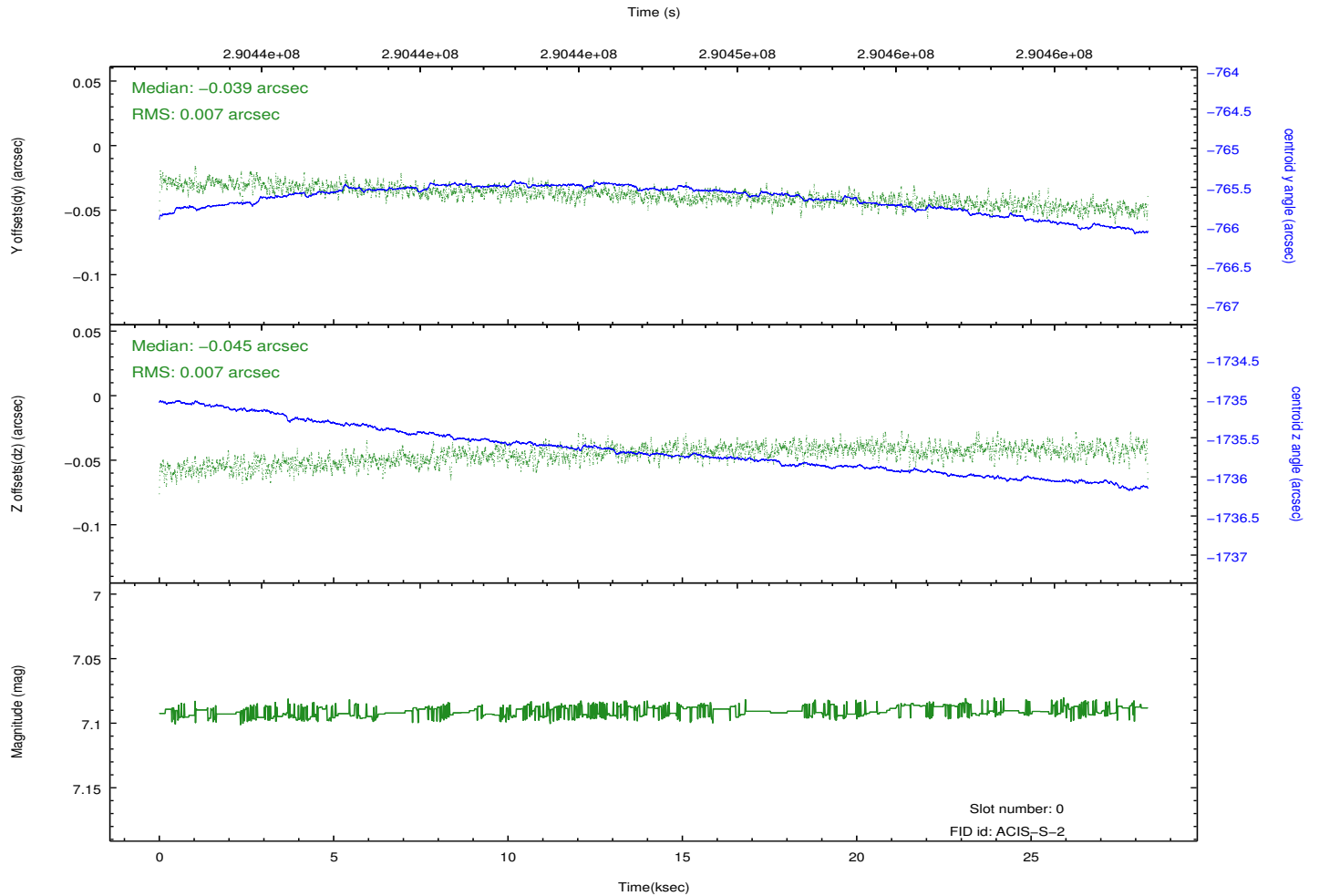
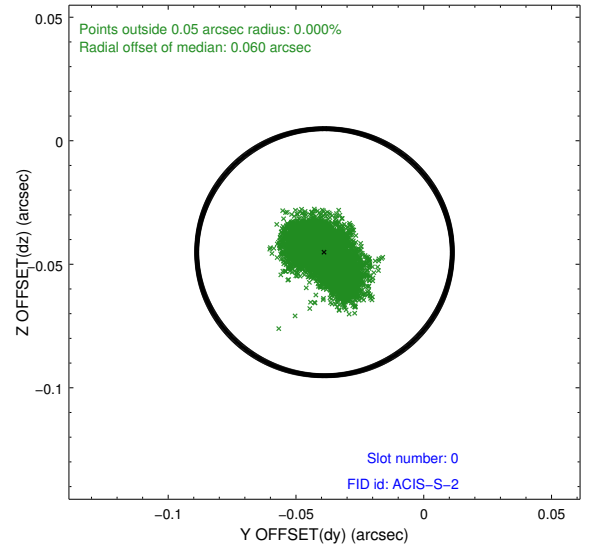
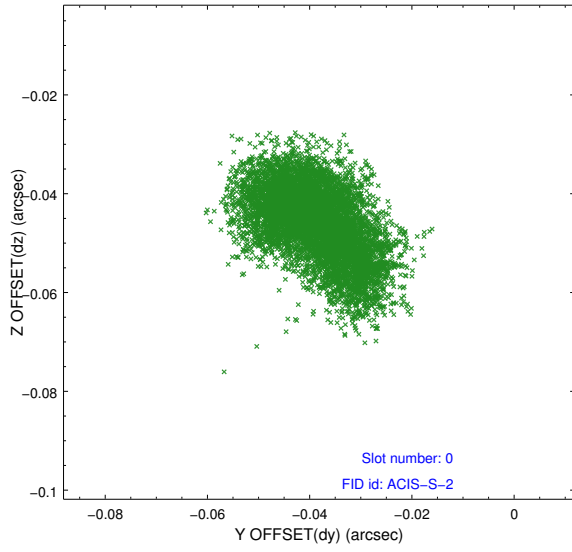


2.4.5 Slot 7

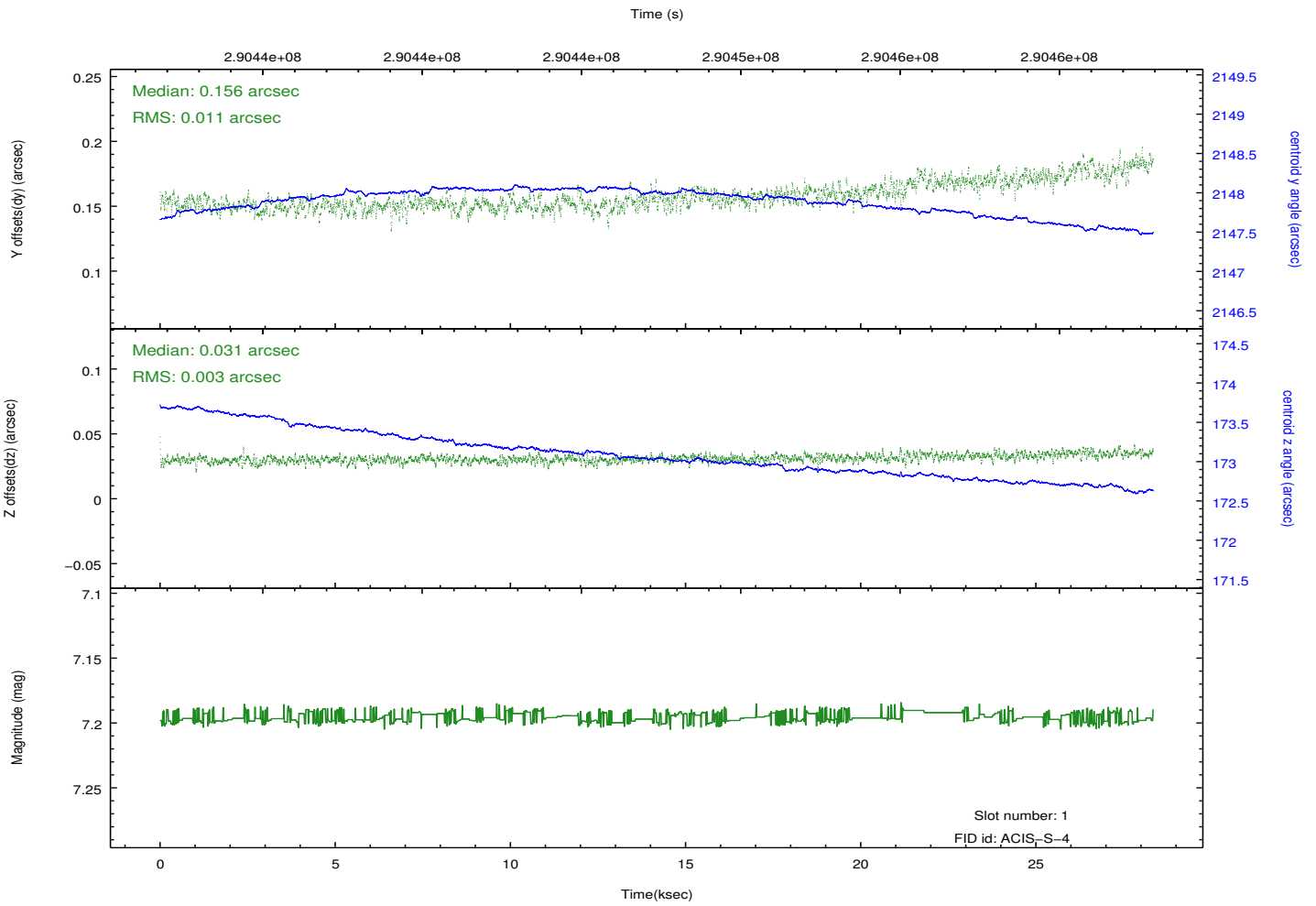
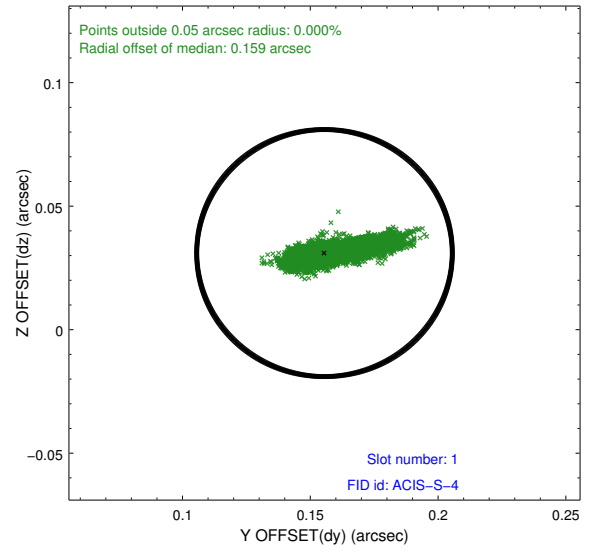
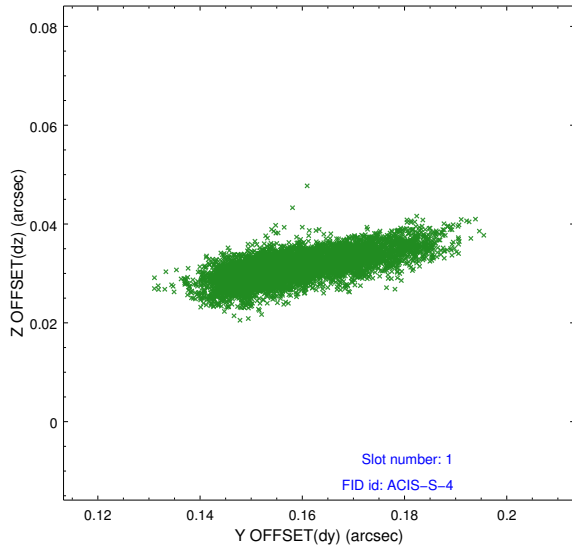


2.5 FID Slots

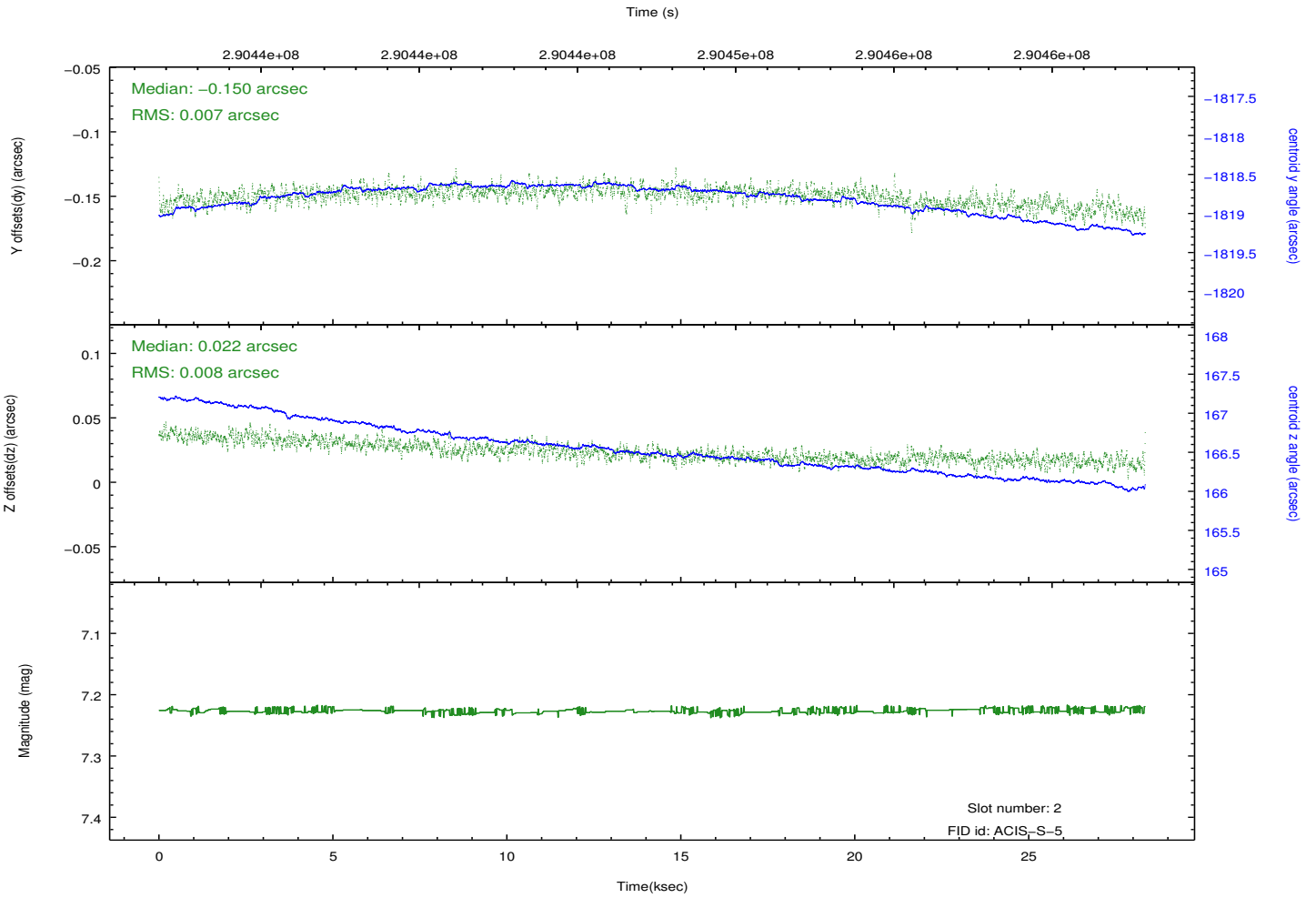
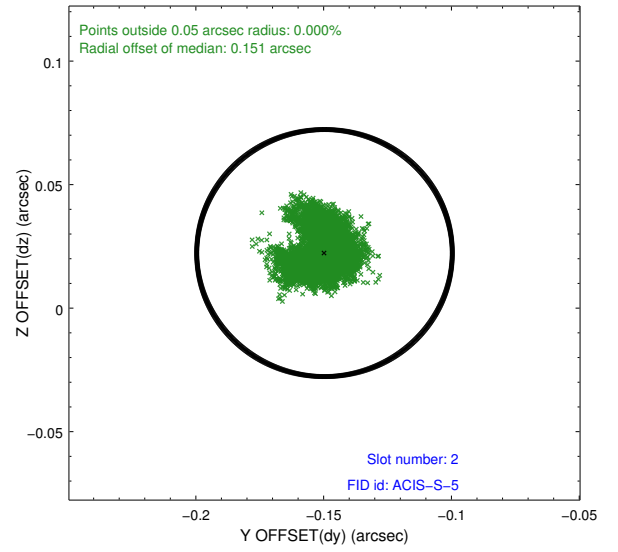
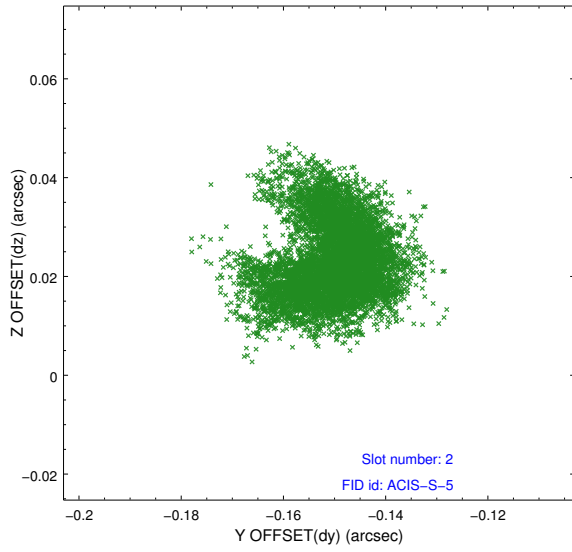
2.5.1 Slot 0



2.5.2 Slot 1



2.5.3 Slot 2



A Summary

A.1 Status

V&V Scientist	Beth Sundheim
V&V Date (YYYY-MM-DD)	2012.04.23
V&V Edition	1
V&V Disposition and Status	OK
V&V Charge Time	28.0447998

A.2 Comments