

V&V Reference Report

L2 ASCDS Version : 8.4.5

Observation 757 - L2 Version 4
Chandra X-Ray Center

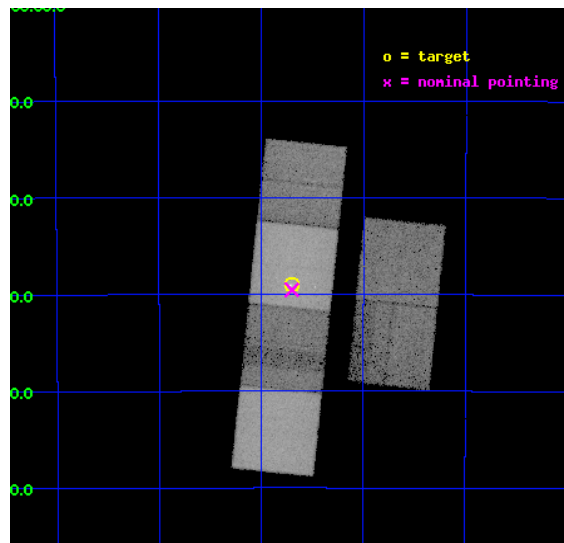
L2 Processing Date : Aug 31 2012

Contents

1	Front	2
2	OBI	3
2.1	OBI	3
2.1.1	Images	3
2.1.2	Bias	3
2.1.3	Parameters	4
2.1.4	Events	4
2.2	Compared Parameters	5
2.3	Aspect	6
2.4	Star Slots	9
2.4.1	Slot 3	9
2.4.2	Slot 4	10
2.4.3	Slot 5	11
2.4.4	Slot 6	12
2.4.5	Slot 7	13
2.5	FID Slots	14
2.5.1	Slot 0	14
2.5.2	Slot 1	15
2.5.3	Slot 2	16
A	Summary	17
A.1	Status	17
A.2	Comments	17

1 Front

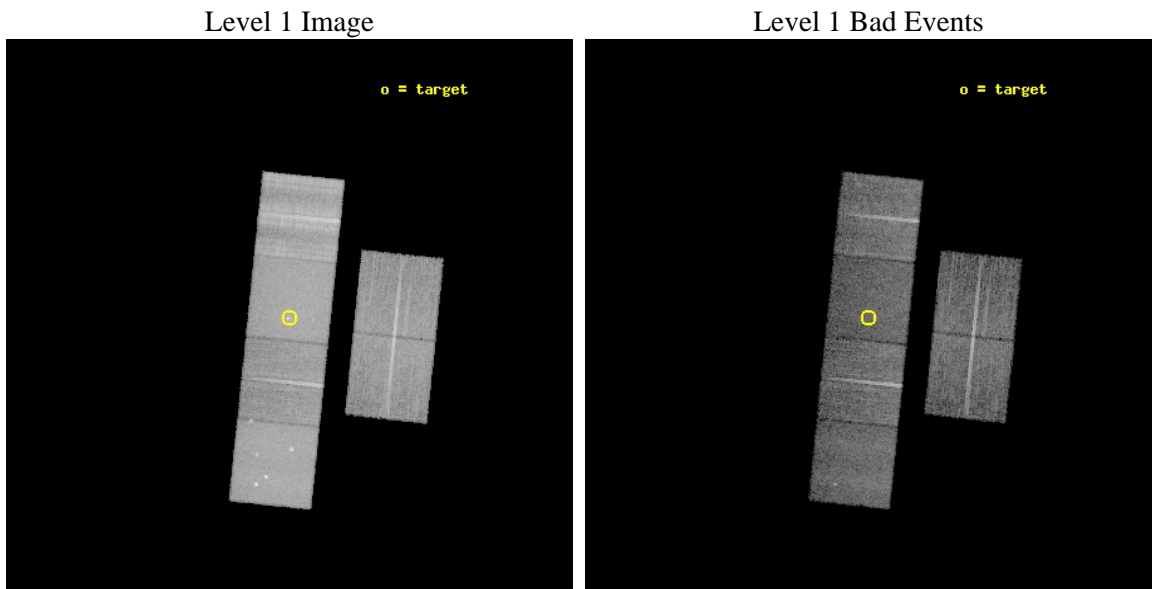
seq_num	500053	Sequence number
obs_id	757	Observation id
title	TEMPORAL, SPECTRAL, AND SPATIAL CHARACTERIZATION OF PSR B1706-44	P
observer	PROF. John Finley	Principal investigator
object	PSR B1706-44	Source name
dtcycle	0	
cycle	P	events from which exps? Prim/Second/Both
ra_targ	257.425833	Observer's specified target RA [deg]
dec_targ	-44.4825	Observer's specified target Dec [deg]
ra_nom	257.42475714797	Nominal RA [deg]
dec_nom	-44.492361166539	Nominal Dec [deg]
roll_nom	275.8982328087	Nominal Roll [deg]
revision	4	Processing version of data
ontime	14441.600013435	Sum of GTIs [s]
livetime	14258.731778377	Livetime [s]
ontime2	14441.600013435	Sum of GTIs [s]
ontime3	14438.359053195	Sum of GTIs [s]
ontime5	14441.600013435	Sum of GTIs [s]
ontime6	14441.600013435	Sum of GTIs [s]
ontime7	14441.600013435	Sum of GTIs [s]
ontime8	14441.600013435	Sum of GTIs [s]
l2events	259540	Number of level 2 events



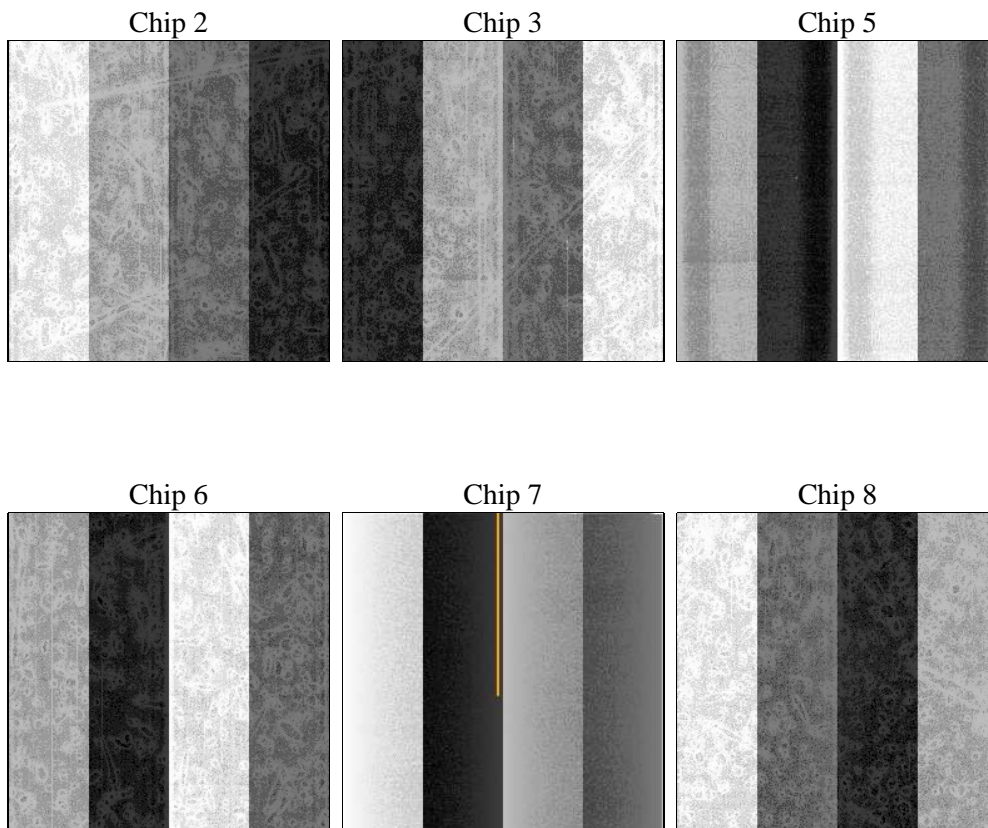
2 OBI

2.1 OBI

2.1.1 Images



2.1.2 Bias



2.1.3 Parameters

obi_num	0	Obi number	sched_exp_time	14490.000000	[s] Scheduled observation exposure time
ascdsver	8.4.5	Processing system revision	ontime	14441.600013435	Sum of GTIs [s]
caldbver	4.5.1.1	 	ontime2	14441.600013435	Sum of GTIs [s]
date	2012-08-31T13:32:03	Date and time of file creation	ontime3	14438.359053195	Sum of GTIs [s]
revision	4	Processing version of data	ontime5	14441.600013435	Sum of GTIs [s]
			ontime6	14441.600013435	Sum of GTIs [s]
			ontime7	14441.600013435	Sum of GTIs [s]
			ontime8	14441.600013435	Sum of GTIs [s]
			l1events	798014	Number of level 1 events

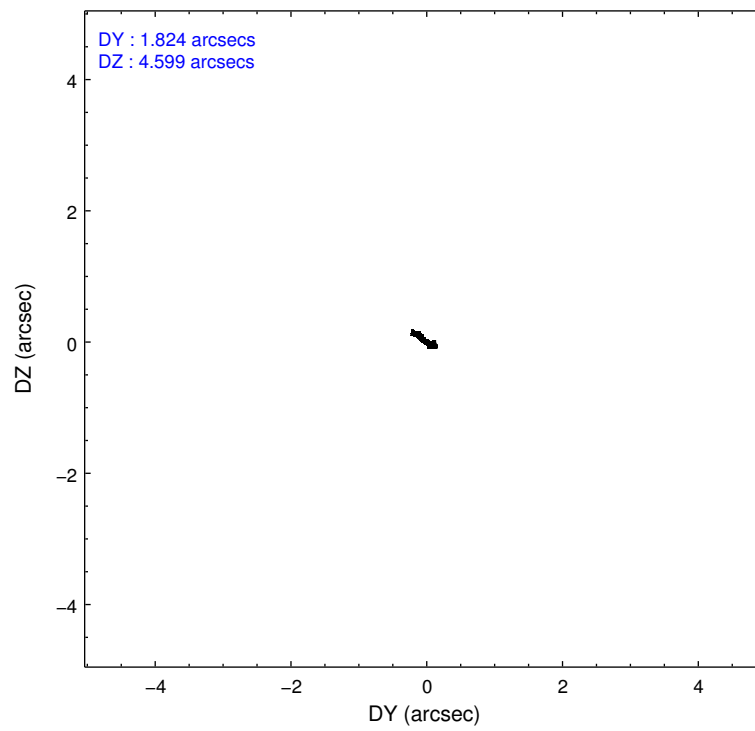
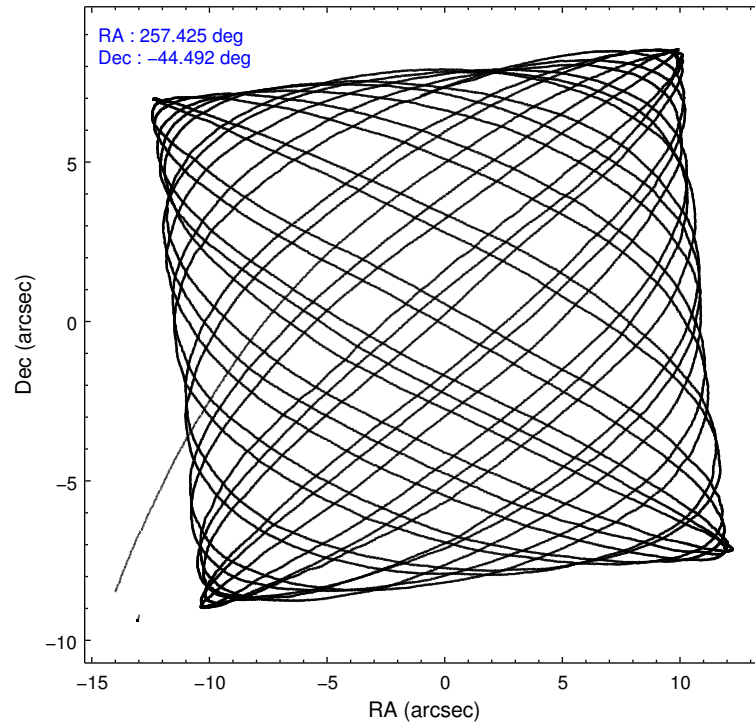
2.1.4 Events

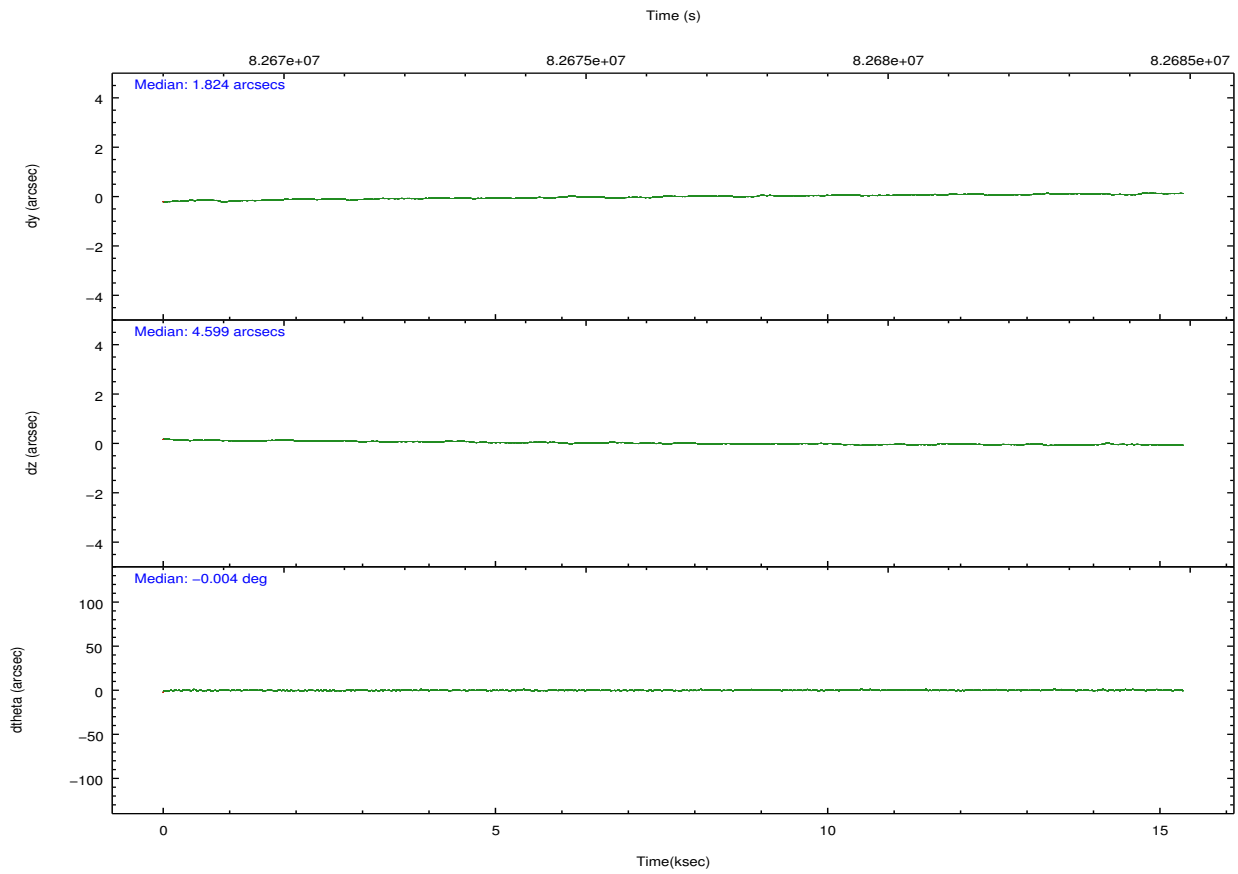
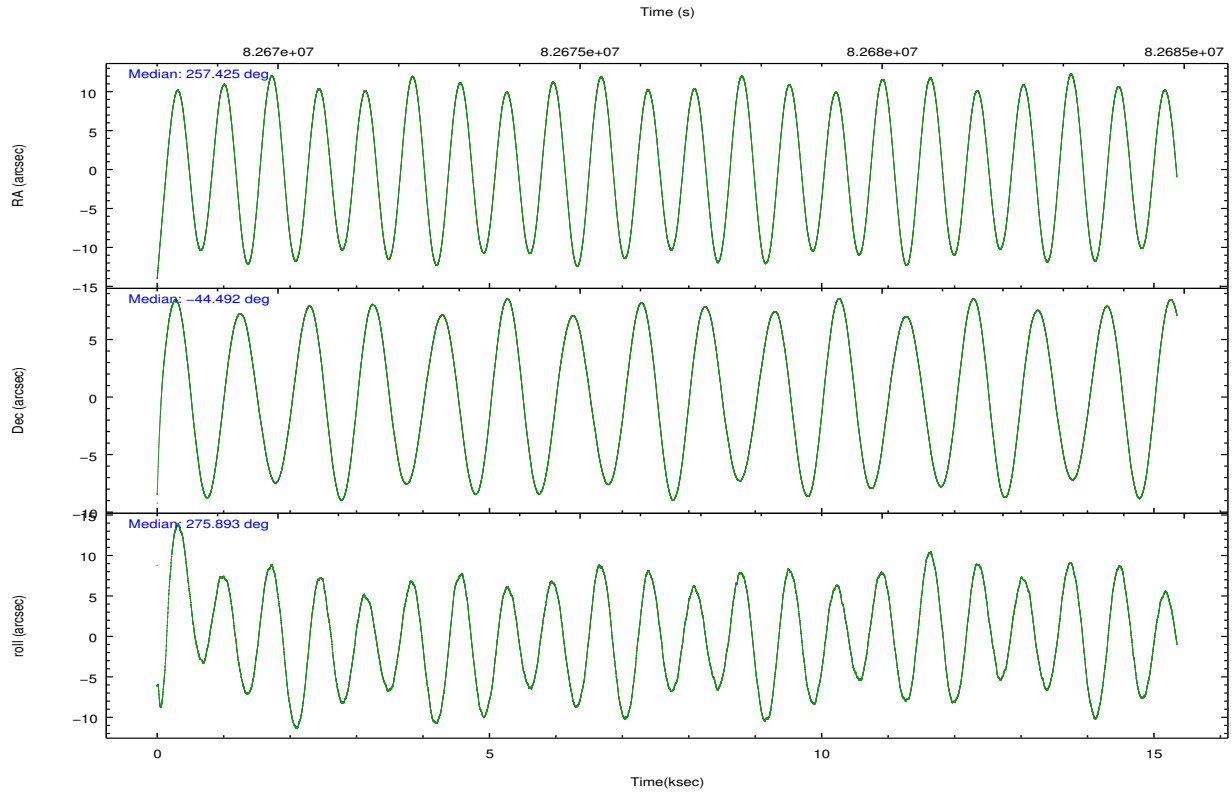
	ccd 2	ccd 3	ccd 5	ccd 6	ccd 7	ccd 8		ccd 2	ccd 3	ccd 5	ccd 6	ccd 7	ccd 8
level 1 events	101361	100847	156111	104342	150209	185144	grade 0 events	10360	11732	13668	12717	10708	39963
rejected events	80439	77530	67072	80452	60131	90948		10%	11%	8%	12%	7%	21%
rejected %	79%	76%	42%	77%	40%	49%	grade 1 events	69	62	252	72	140	284
								0%	0%	0%	0%	0%	0%
							grade 2 events	4852	5752	25053	5265	17611	12621
								4%	5%	16%	5%	11%	6%
							grade 3 events	1020	1104	4947	1186	7850	14663
								1%	1%	3%	1%	5%	7%
							grade 4 events	1329	1186	4787	1233	7731	13113
								1%	1%	3%	1%	5%	7%
							grade 5 events	2722	2970	9316	3183	9982	4695
								2%	2%	5%	3%	6%	2%
							grade 6 events	3373	3555	40641	3509	46269	13903
								3%	3%	26%	3%	30%	7%
							grade 7 events	77636	74486	57447	77177	49918	85902
								76%	73%	36%	73%	33%	46%

2.2 Compared Parameters

Parameter	Planned	Actual	Parameter	Planned	Actual
Instrument	ACIS	ACIS	Obspar format version number	7	7
Detector	ACIS-235678	ACIS-235678	Obspar file type	PREDICTED	ACTUAL
Grating	NONE	NONE	Obspar update status	NONE	UPDATED
Data mode	FAINT	FAINT	Number of optional ACIS chips dropped	0	0
Observation mode	POINTING	POINTING	On-chip summing requested	N	N
[deg] Pointing RA	257.402053	257.4247571479731	Subarray requested	NONE	NONE
[deg] Pointing Dec	-44.470302	-44.49236116653901	Alternating exposures requested	N	N
[deg] Pointing Roll	275.725684	275.8982328087033	[s] Primary exposure time	0.000000	3.2
[mm] SIM focus pos	-0.684267	-0.6828225247311905			
[mm] SIM defocus	0	0.001444936568705701			
[mm] SIM translation stage pos	-190.132523	-190.1425803651734			
[mm] SIM translation stage offset	0	0.01005778216563158			
[s] Observation start time (MET)	82669629.184000	82668246.445895			
Observation start date	2000-08-14T19:46:05	2000-08-14T19:24:06			
[s] Observation end time (MET)	82684119.184000	82684428.121501			
Observation end date	2000-08-14T23:47:35	2000-08-14T23:53:48			
Read mode	TIMED	TIMED			

2.3 Aspect



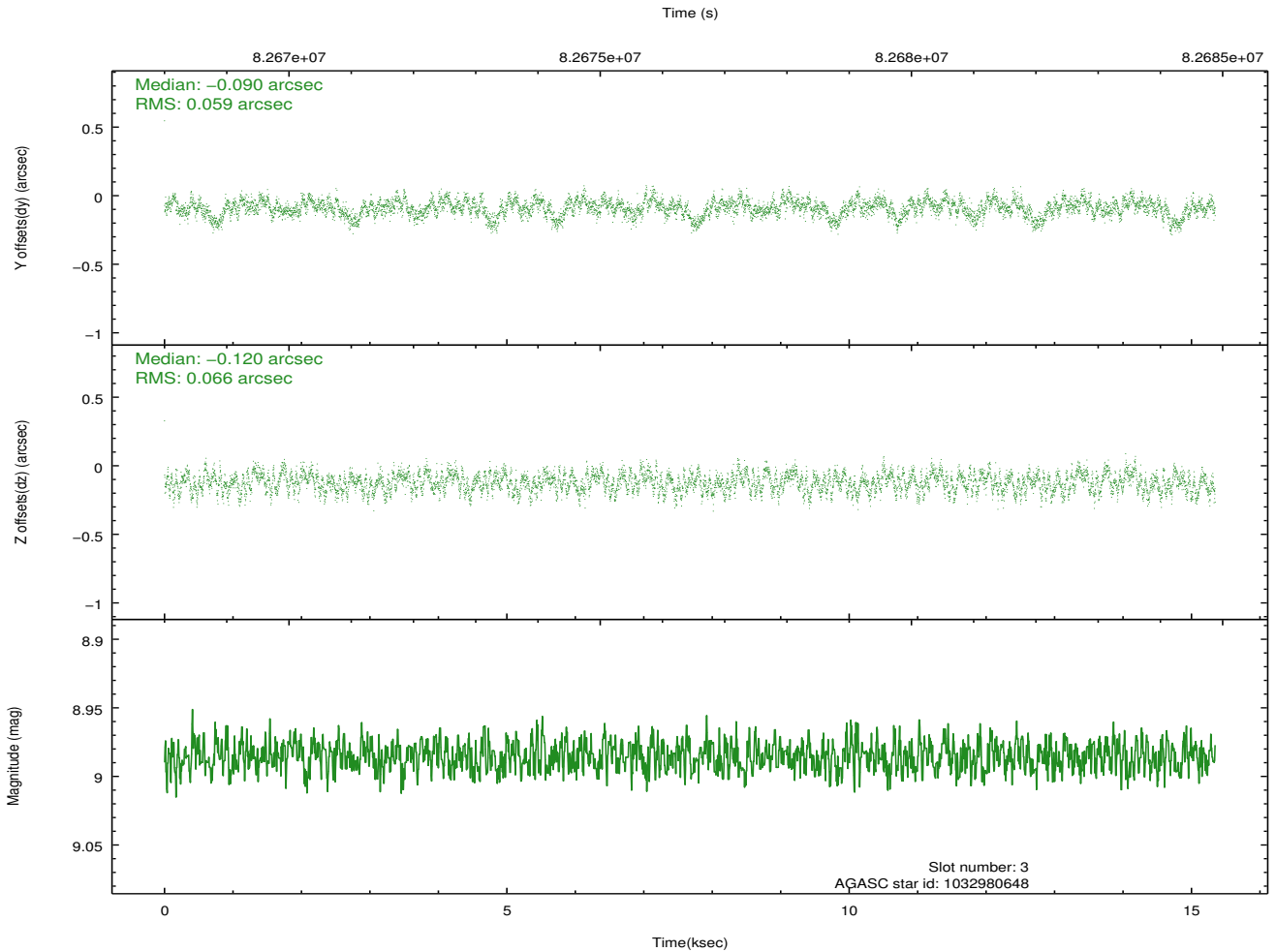
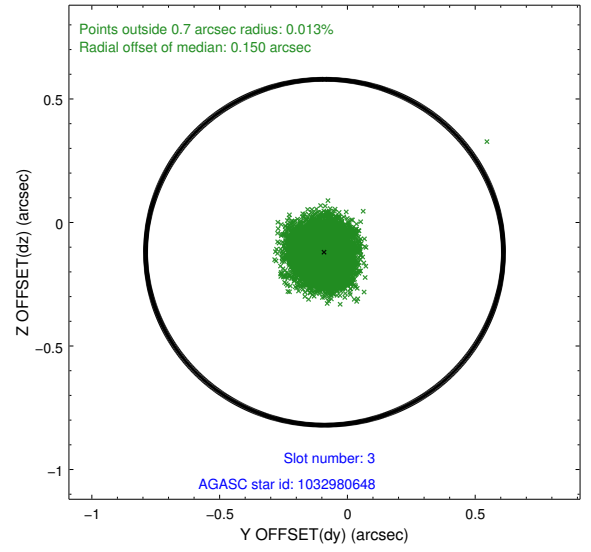
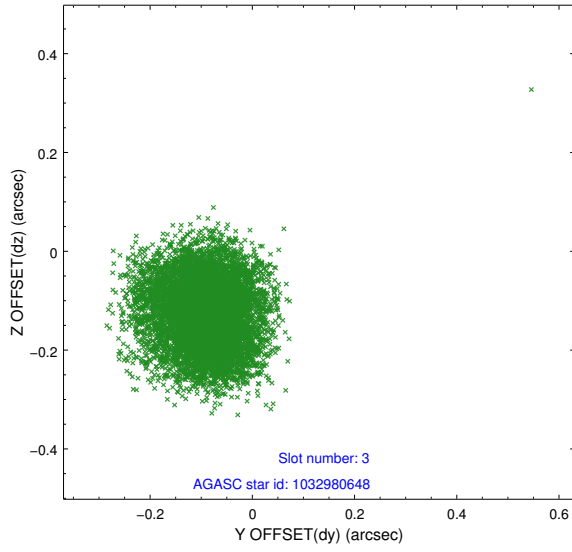


Slot Statistics

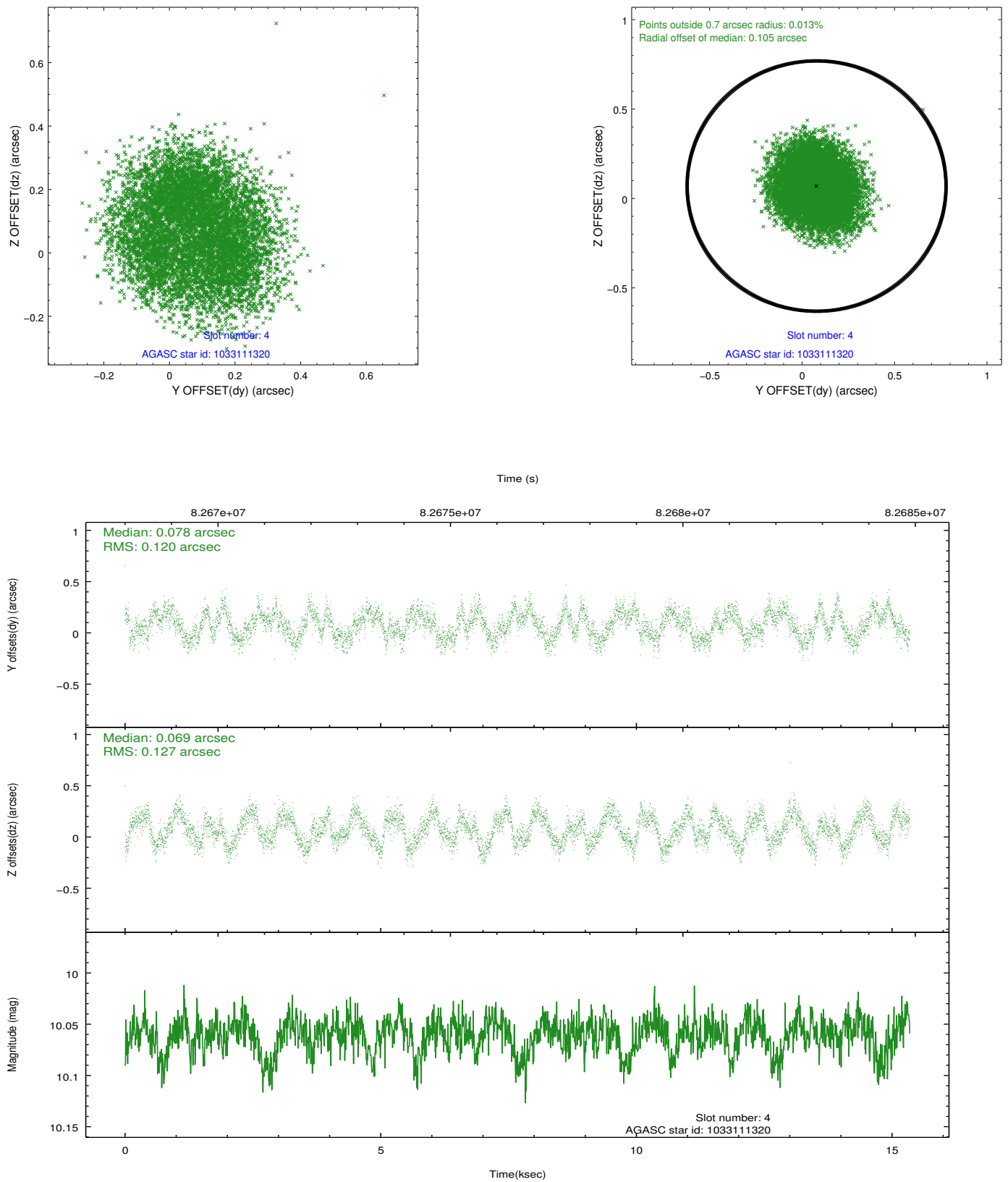
slot	status	id	mag	n_pts	med_dy	med_dz	dr1	dr2	ra	dec	mean_y	mean_z
0	FID	ACIS-S-2	7.12	3744	-0.024	-0.009	0.007	0.012	0.000000	0.000000	-754.45	-1725.67
1	FID	ACIS-S-4	7.21	3743	-0.018	0.014	0.005	0.010	0.000000	0.000000	2158.71	182.53
2	FID	ACIS-S-5	7.24	3743	0.011	0.004	0.007	0.012	0.000000	0.000000	-1806.88	176.53
3	GUIDE	1032980648	8.99	7485	-0.090	-0.120	0.096	0.148	256.588109	-44.440758	-302.63	-2072.51
4	GUIDE	1033111320	10.06	7481	0.078	0.069	0.192	0.281	257.828432	-44.679268	861.69	1010.22
5	GUIDE	1033111848	9.17	7485	0.070	0.071	0.086	0.137	257.770921	-44.964714	1868.48	757.14
6	GUIDE	1032986656	10.23	7481	0.014	-0.115	0.145	0.234	256.880697	-44.255553	-897.25	-1261.28
7	GUIDE	1033111096	9.65	7485	-0.072	0.094	0.106	0.174	257.807432	-44.097992	-1225.32	1175.80

2.4 Star Slots

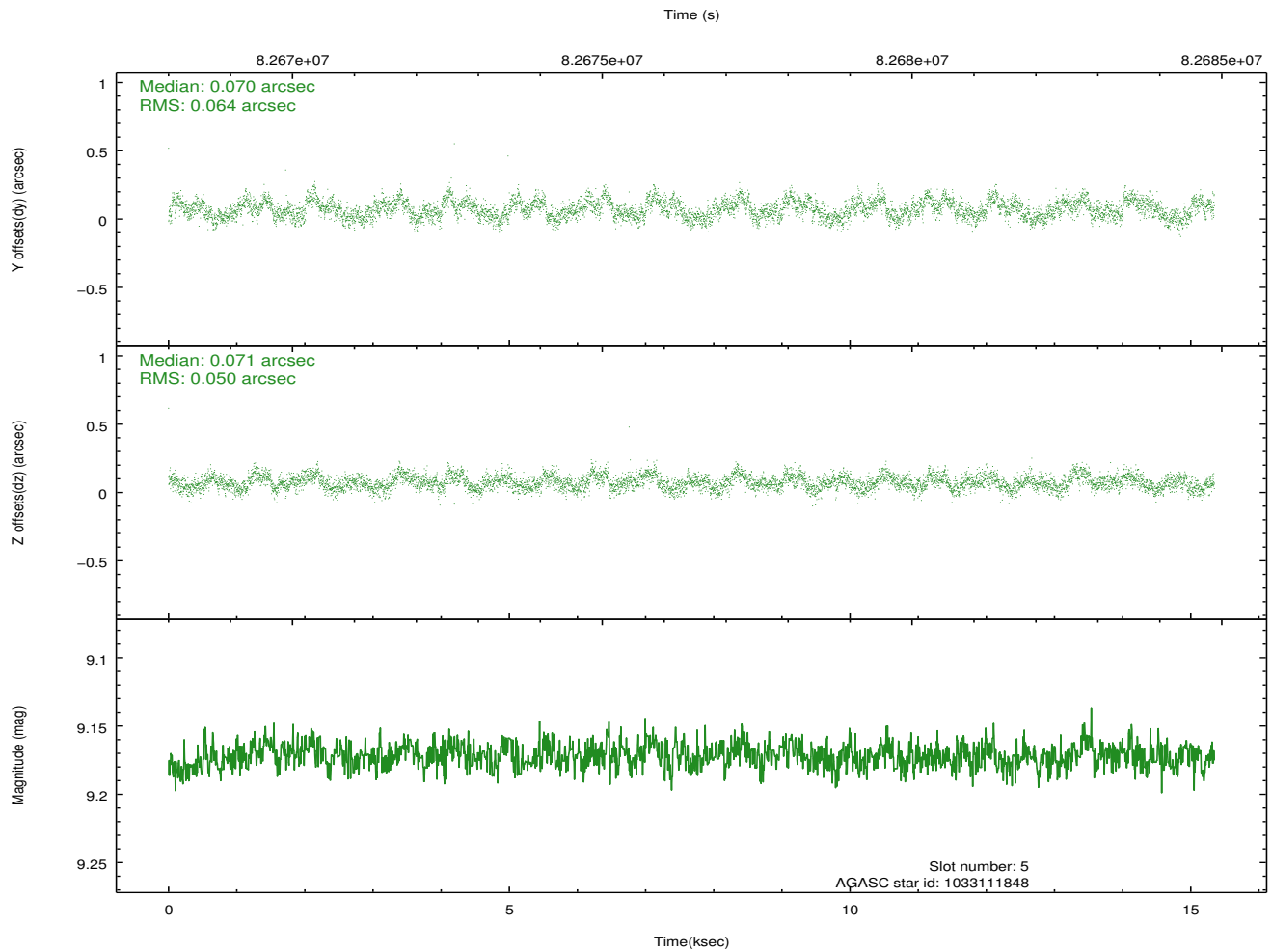
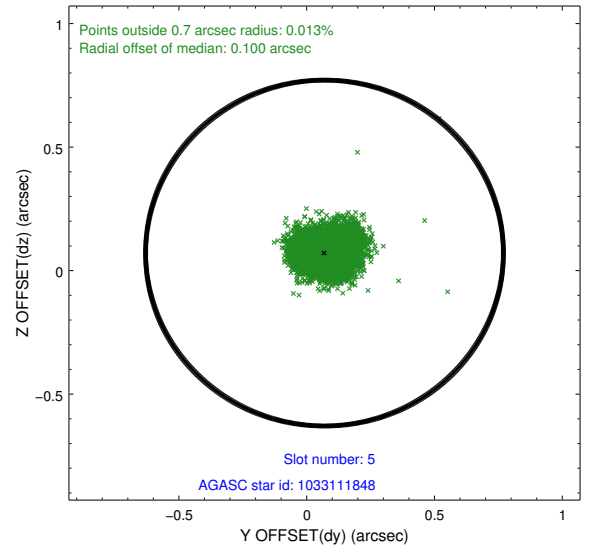
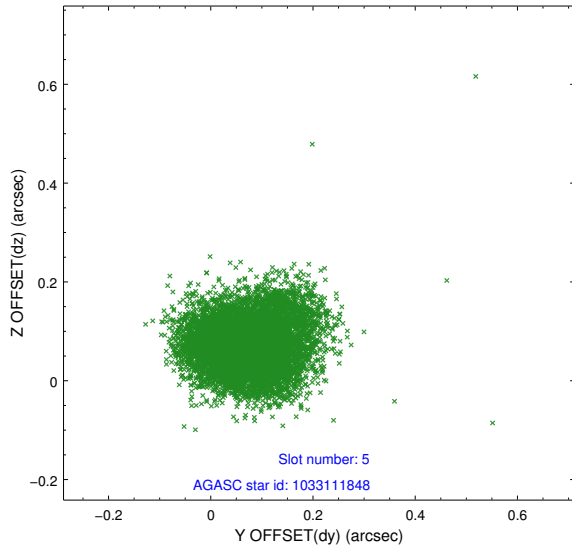
2.4.1 Slot 3



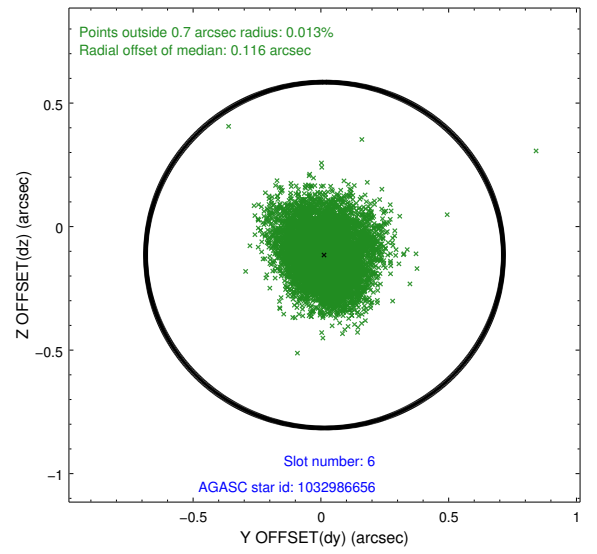
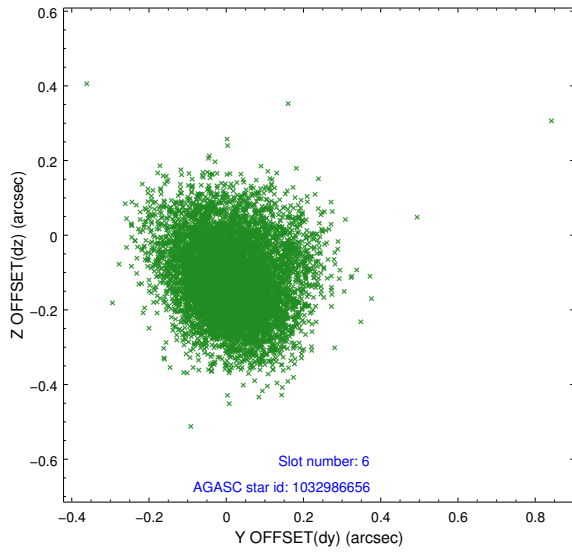
2.4.2 Slot 4



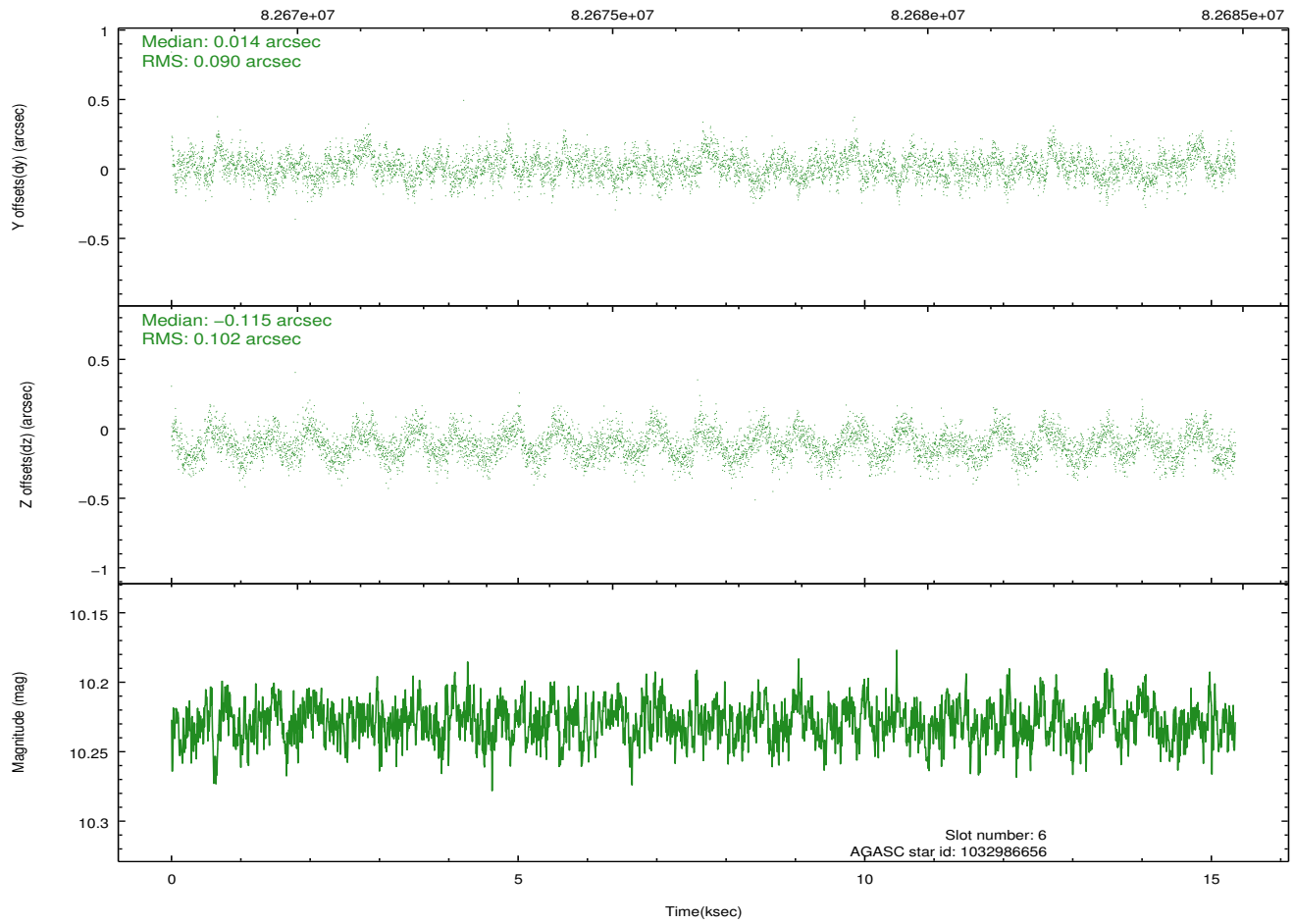
2.4.3 Slot 5



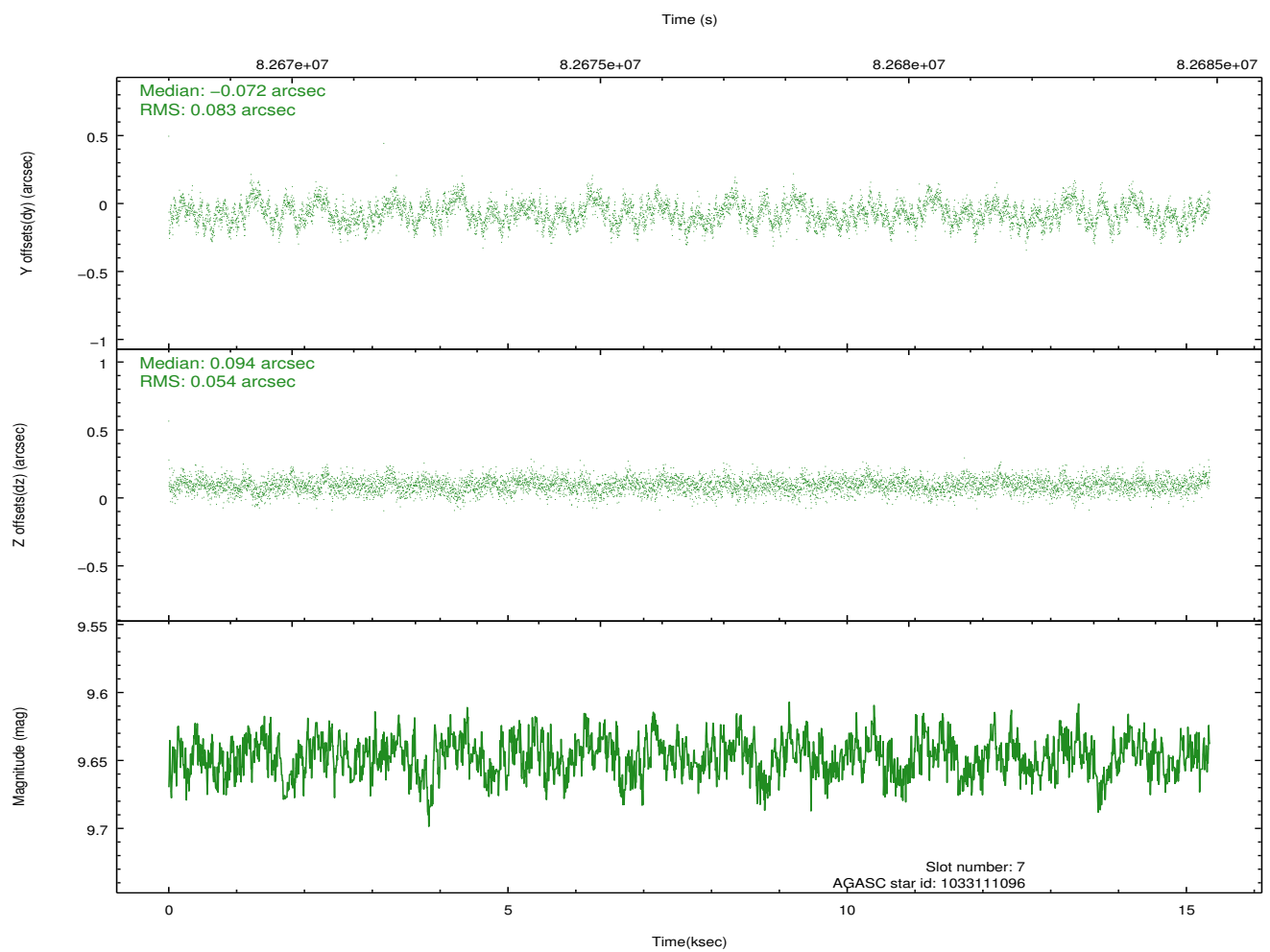
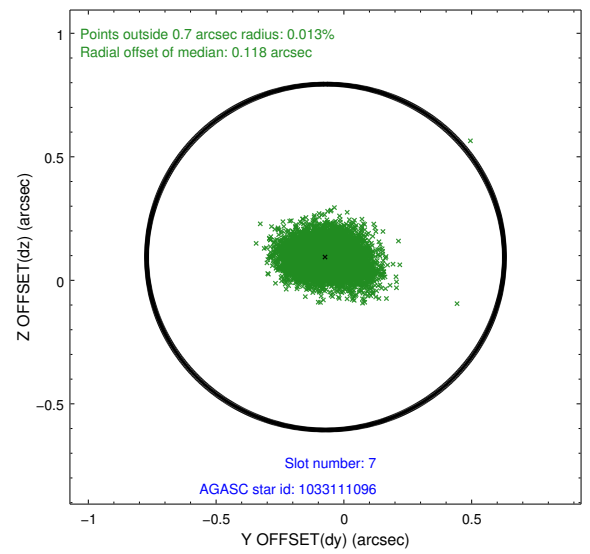
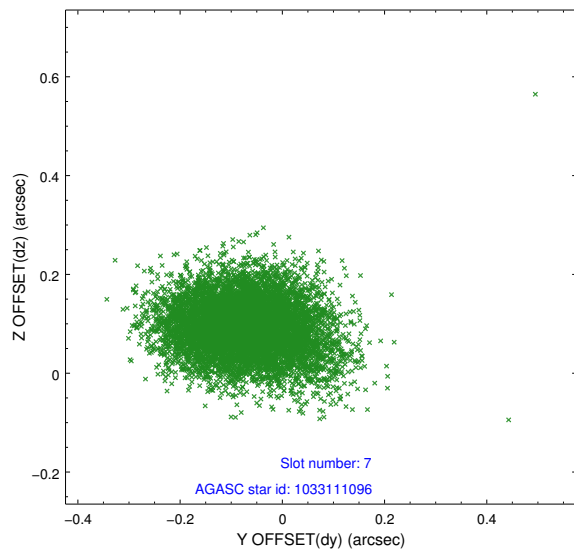
2.4.4 Slot 6



Time (s)

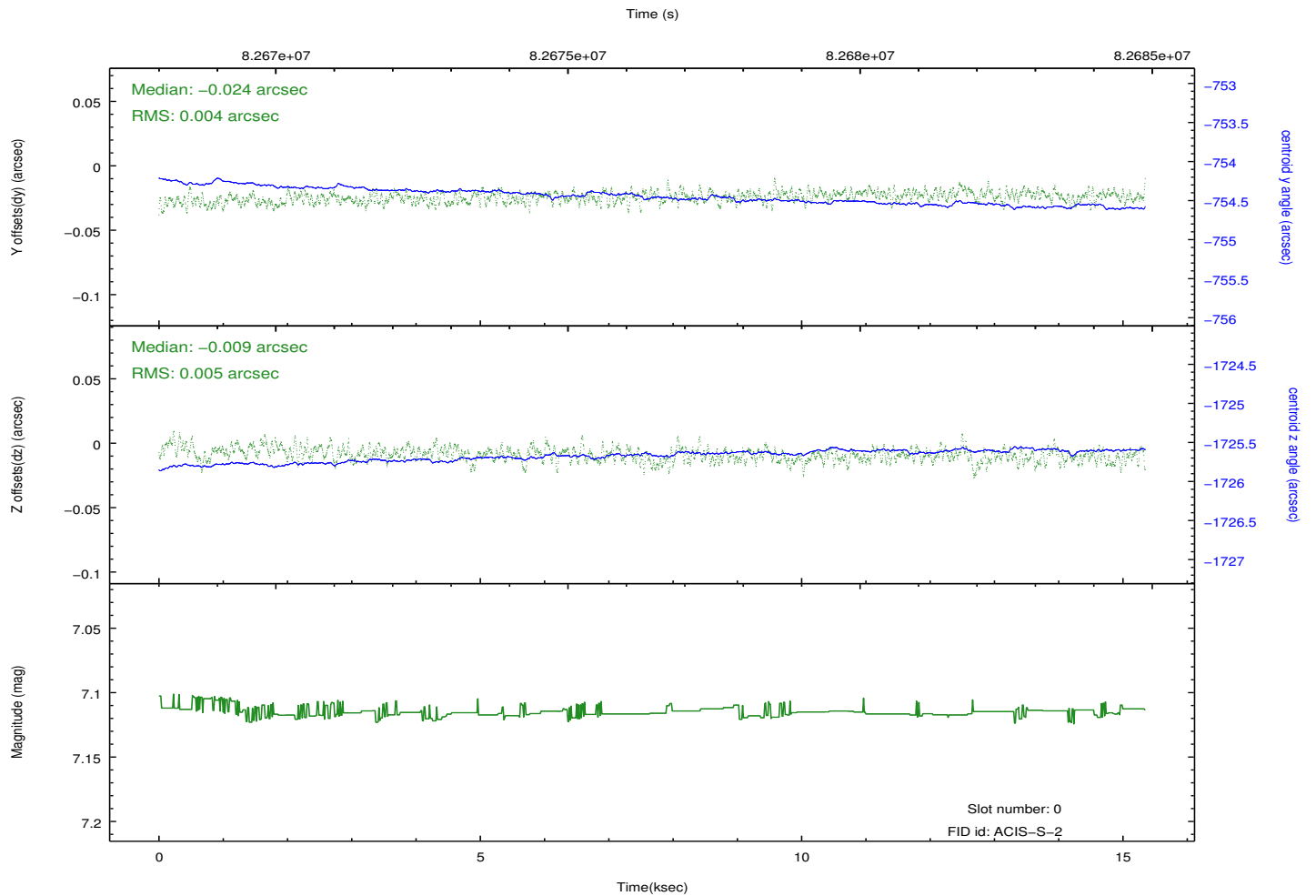
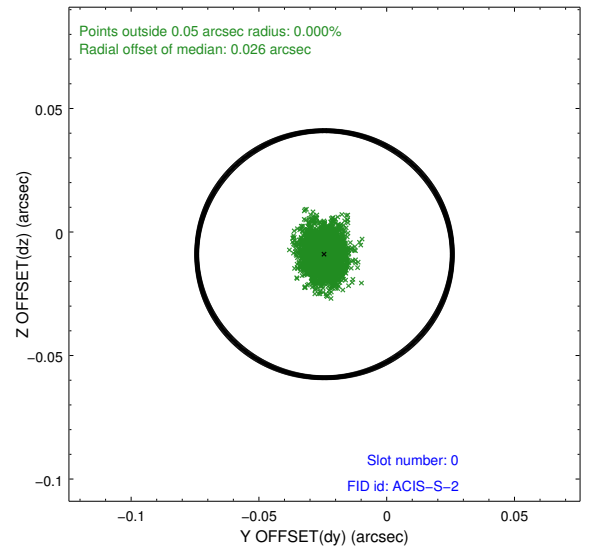
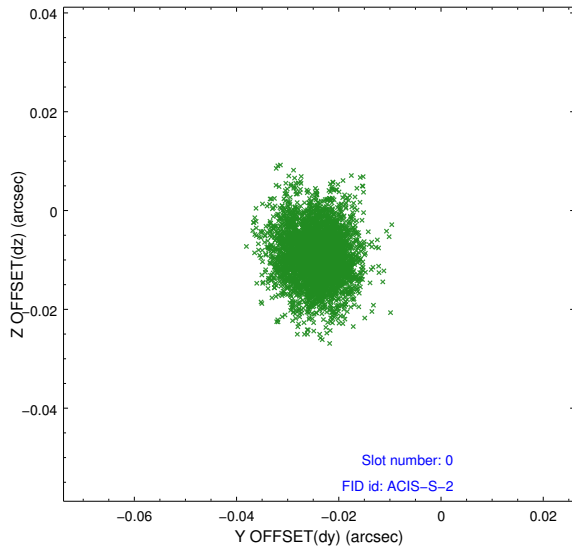


2.4.5 Slot 7

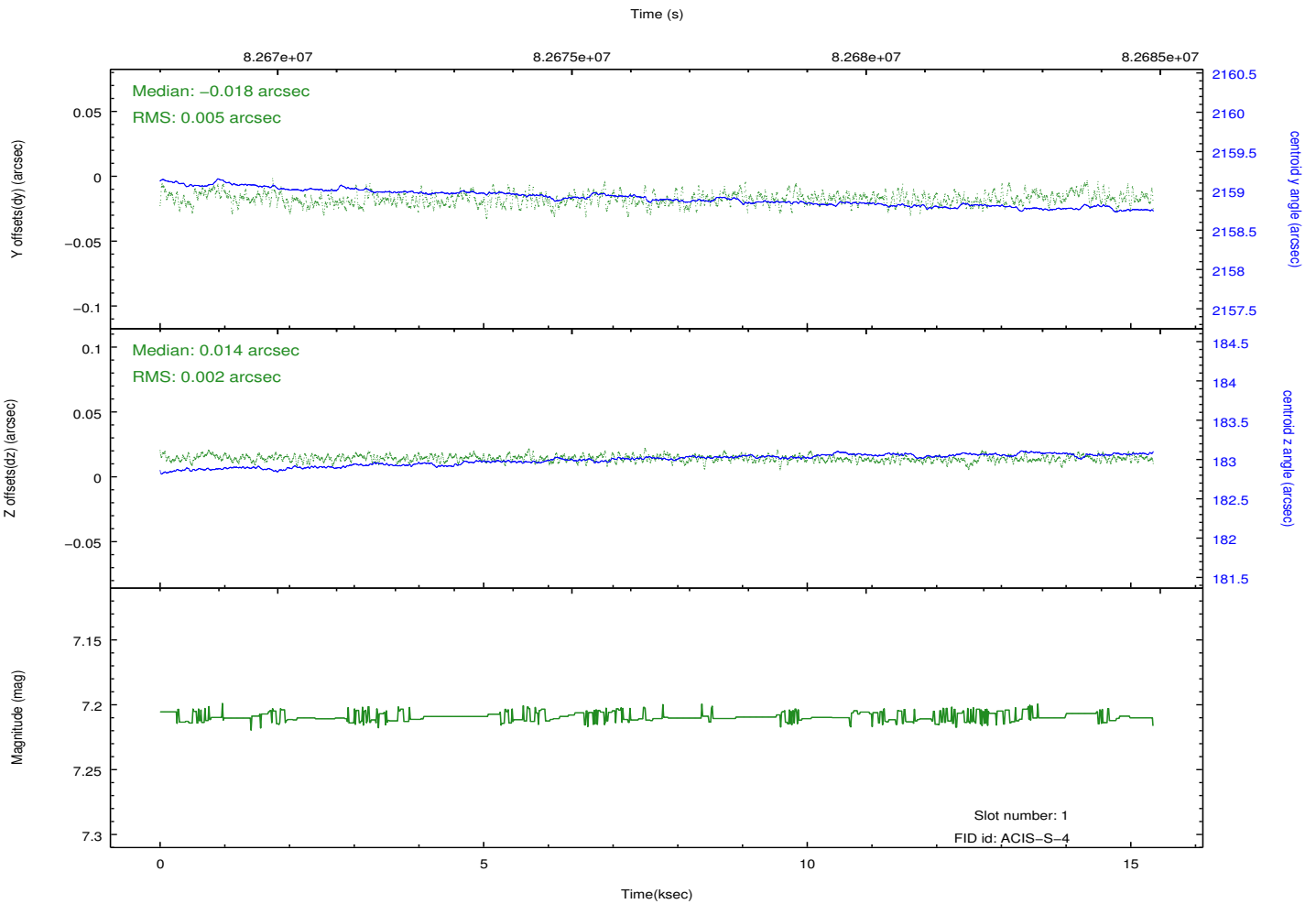
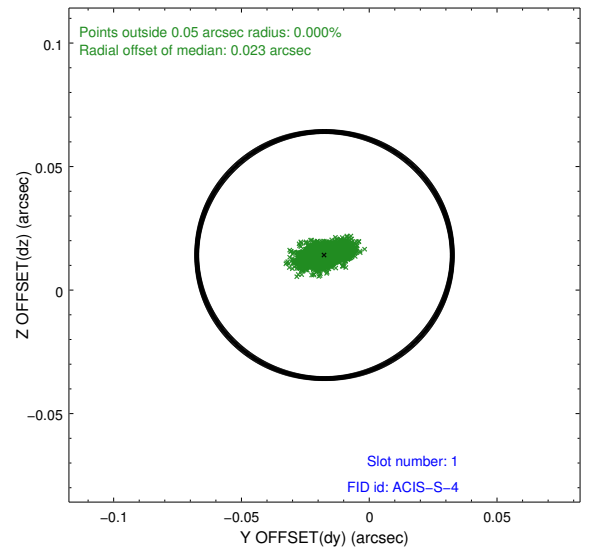
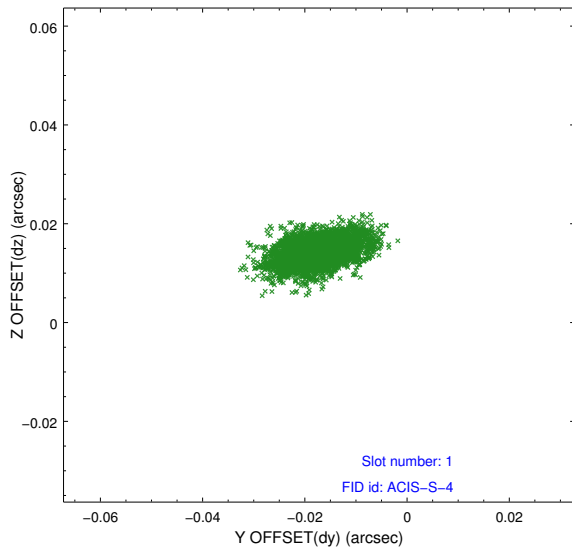


2.5 FID Slots

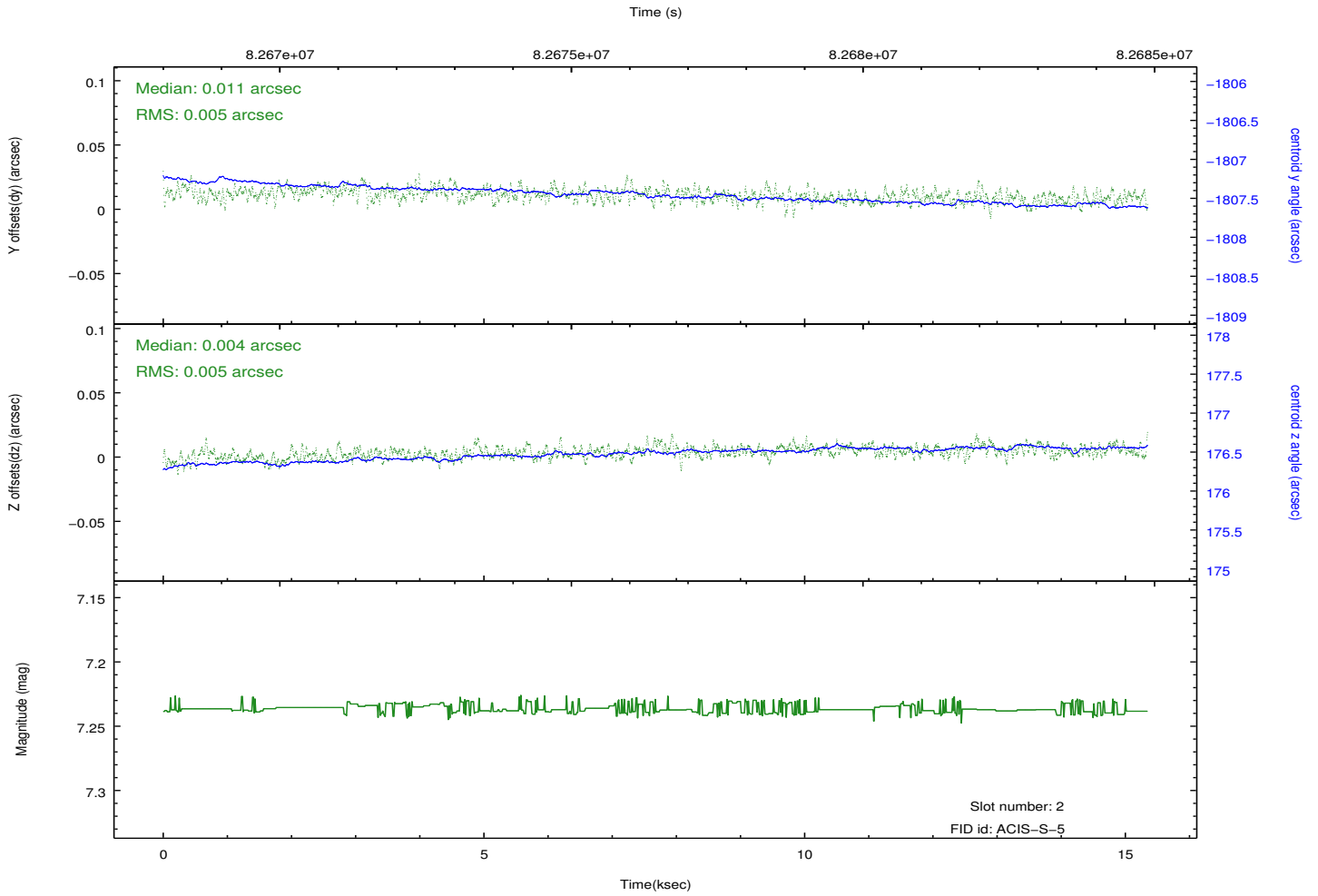
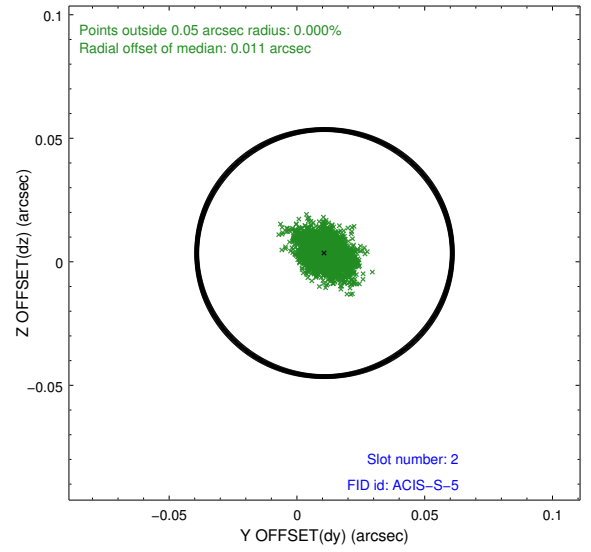
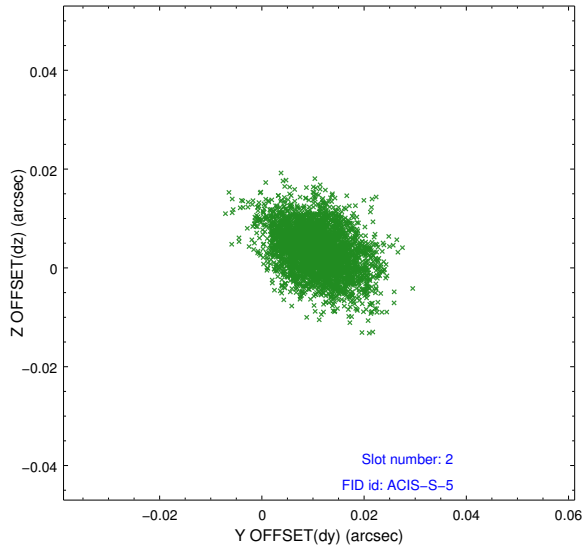
2.5.1 Slot 0



2.5.2 Slot 1



2.5.3 Slot 2



A Summary

A.1 Status

V&V Scientist	Jen Lauer
V&V Date (YYYY-MM-DD)	2012.09.06
V&V Edition	1
V&V Disposition and Status	OK
V&V Charge Time	14.435

A.2 Comments