

# V&V Reference Report

## L2 ASCDS Version : 8.4.4

Observation 7637 - L2 Version 2  
Chandra X-Ray Center

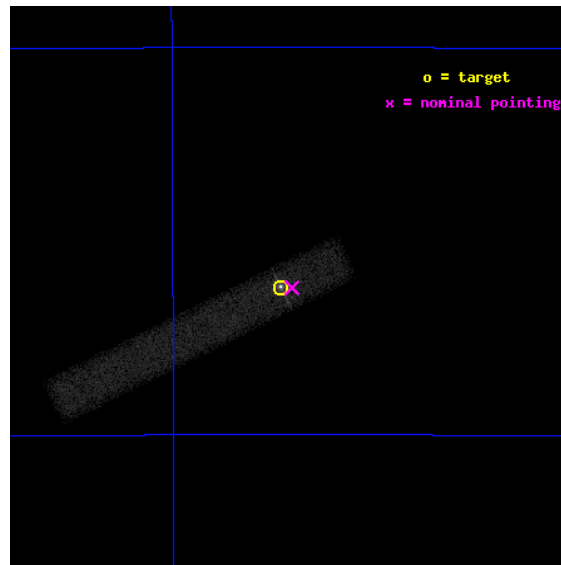
L2 Processing Date : Apr 28 2012

## Contents

<b>1</b>	<b>Front</b>	<b>2</b>
<b>2</b>	<b>OBI</b>	<b>3</b>
2.1	OBI . . . . .	3
2.1.1	Images . . . . .	3
2.1.2	Bias . . . . .	3
2.1.3	Parameters . . . . .	4
2.1.4	Events . . . . .	4
2.2	Compared Parameters . . . . .	5
2.3	Aspect . . . . .	6
2.4	Star Slots . . . . .	9
2.4.1	Slot 3 . . . . .	9
2.4.2	Slot 4 . . . . .	10
2.4.3	Slot 5 . . . . .	11
2.4.4	Slot 6 . . . . .	12
2.4.5	Slot 7 . . . . .	13
2.5	FID Slots . . . . .	14
2.5.1	Slot 0 . . . . .	14
2.5.2	Slot 1 . . . . .	15
2.5.3	Slot 2 . . . . .	16
<b>A</b>	<b>Summary</b>	<b>17</b>
A.1	Status . . . . .	17
A.2	Comments . . . . .	17

# 1 Front

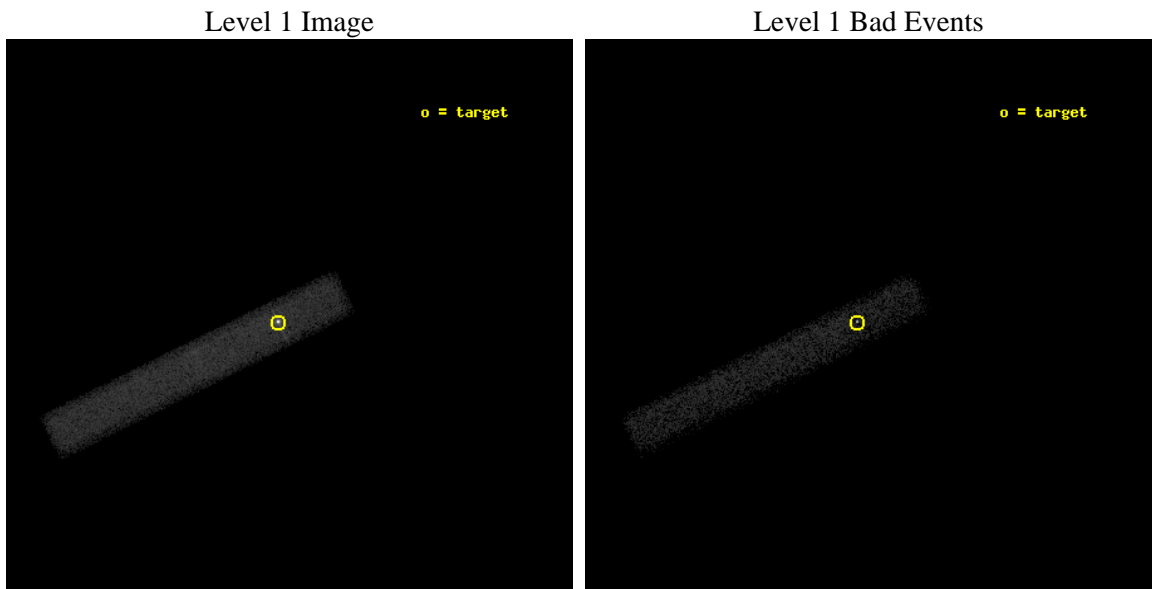
seq_num	500766	Sequence number
obs_id	7637	Observation id
title	Chandra Monitoring of SNR 1987A in A08	Proposal title
observer	Prof. David Burrows	Principal investigator
object	SNR 1987A	Source name
dtcycle	0	&#160
cycle	P	events from which exps? Prim/Second/Both
ra_targ	83.866667	Observer's specified target RA [deg]
dec_targ	-69.26975	Observer's specified target Dec [deg]
ra_nom	83.853096243659	Nominal RA [deg]
dec_nom	-69.2702118605	Nominal Dec [deg]
roll_nom	153.702103897	Nominal Roll [deg]
revision	2	Processing version of data
ontime	28360.798309565	Sum of GTIs [s]
livetime	25721.747061096	Livetime [s]
ontime7	28360.798309565	Sum of GTIs [s]
l2events	53313	Number of level 2 events



## 2 OBI

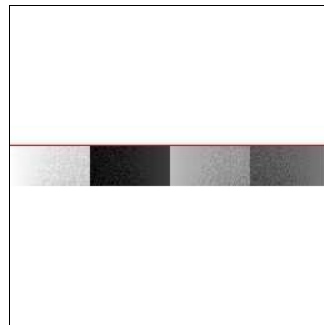
### 2.1 OBI

#### 2.1.1 Images



#### 2.1.2 Bias

Chip 7



### 2.1.3 Parameters

obi_num	0	Obi number	sched_exp_time	28200.000000	[s] Scheduled observation exposure time
ascdsver	8.4.4	Processing system revision	ontime	28360.798309565	Sum of GTIs [s]
caldbver	4.4.9	&#160	ontime7	28360.798309565	Sum of GTIs [s]
date	2012-04-28T01:11:00	Date and time of file creation	l1events	84577	Number of level 1 events
revision	2	Processing version of data			

### 2.1.4 Events

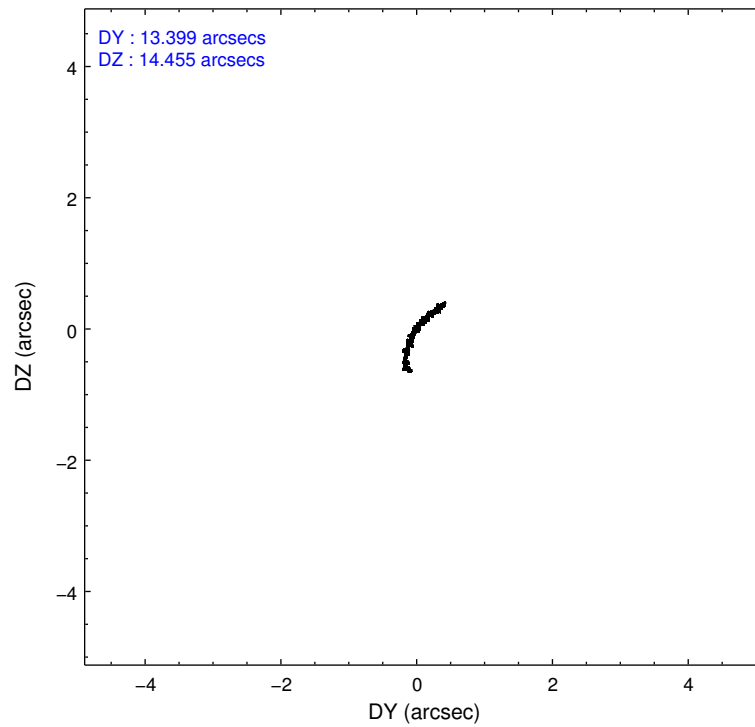
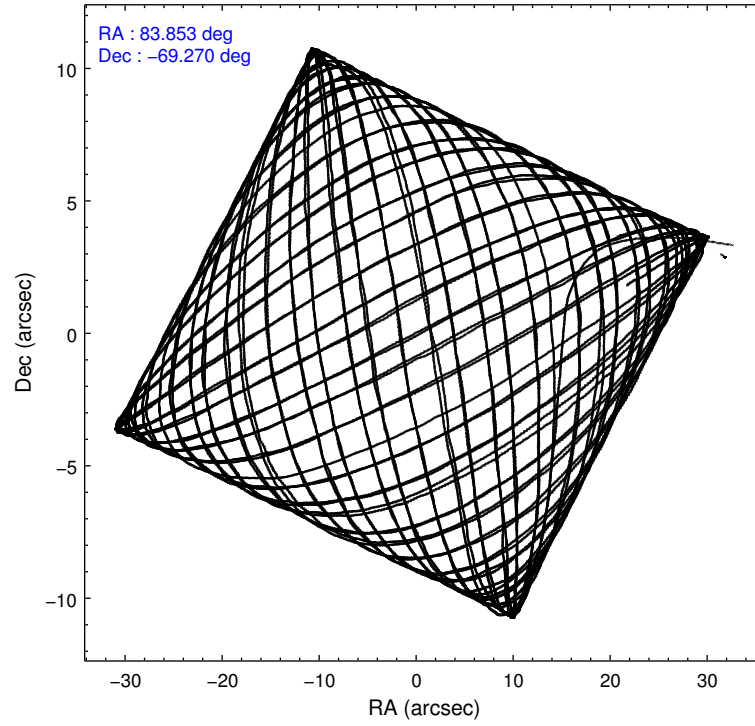
	<b>ccd 7</b>
level 1 events	84577
rejected events	30350
rejected %	<b>35%</b>

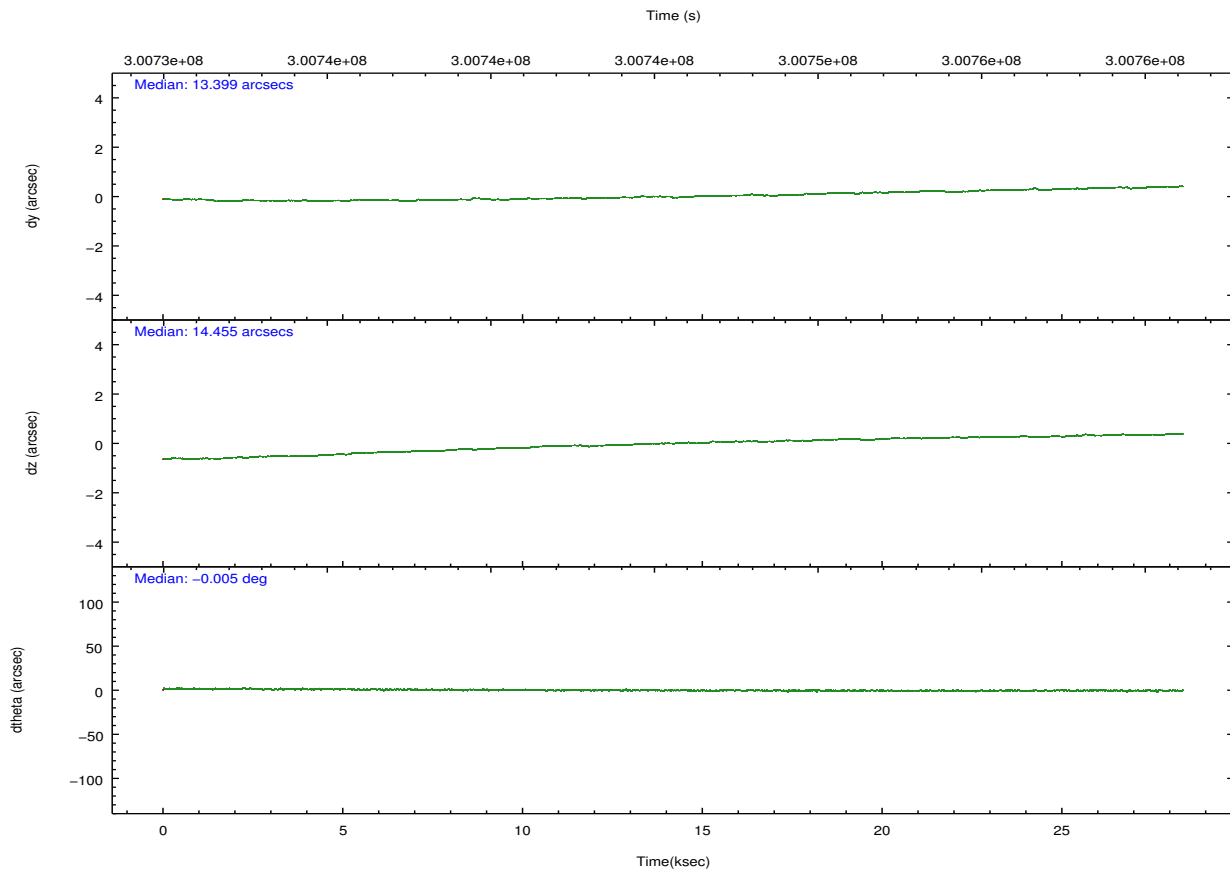
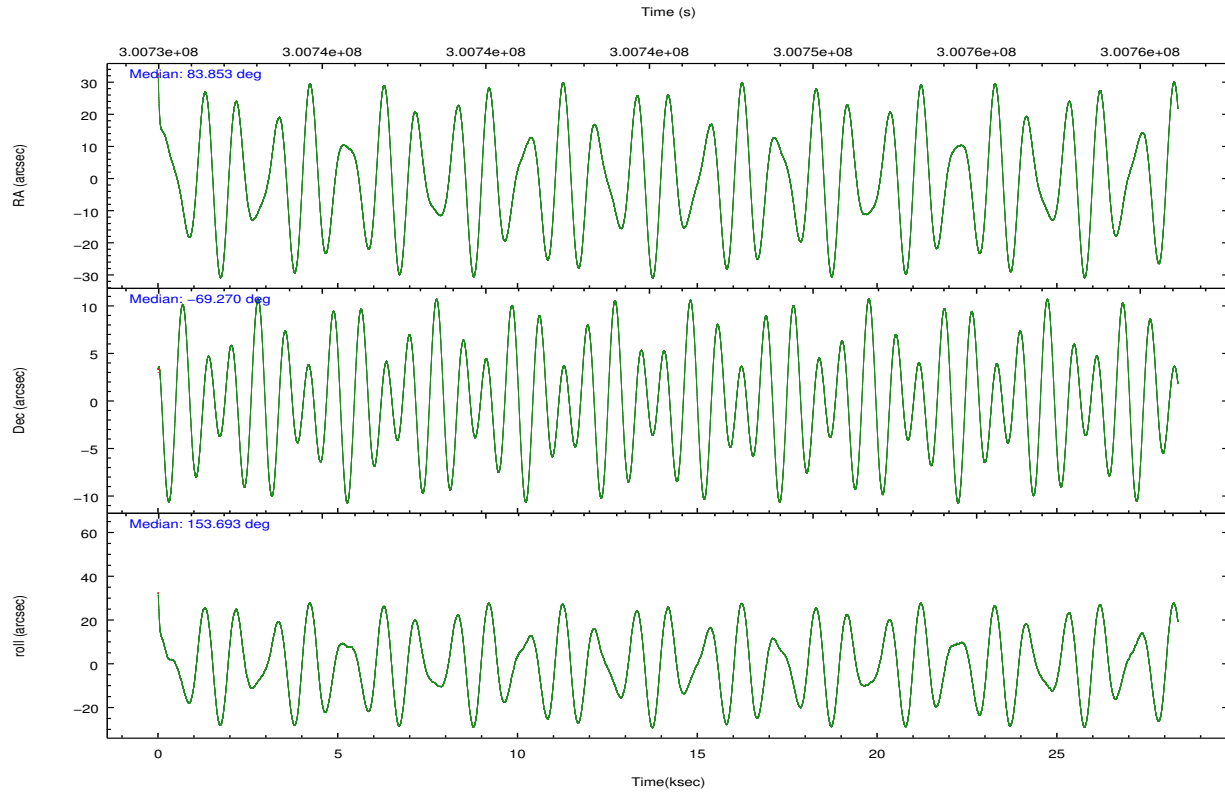
	<b>ccd 7</b>
grade 0 events	11559
	13%
grade 1 events	432
	0%
grade 2 events	13248
	15%
grade 3 events	6776
	8%
grade 4 events	6666
	7%
grade 5 events	5638
	6%
grade 6 events	16902
	19%
grade 7 events	23356
	27%

## 2.2 Compared Parameters

Parameter	Planned	Actual	Parameter	Planned	Actual
Instrument	ACIS	ACIS	Obspar format version number	7	7
Detector	ACIS-7	ACIS-7	Obspar file type	PREDICTED	ACTUAL
Grating	NONE	NONE	Obspar update status	NONE	UPDATED
Data mode	VFAINT	VFAINT	Number of optional ACIS chips dropped	0	0
Observation mode	POINTING	POINTING	On-chip summing requested	N	N
[deg] Pointing RA	83.930016	83.85309624365854	Subarray requested	CUSTOM	1/8
[deg] Pointing Dec	-69.268055	-69.27021186050032	Subarray start row	449	449
[deg] Pointing Roll	153.617410	153.7021038970024	Subarray row count	128	128
[mm] SIM focus pos	-0.684267	-0.6828225247311905	Alternating exposures requested	N	N
[mm] SIM defocus	0	0.001444936568705701	[s] Primary exposure time	0.000000	0.4
[mm] SIM translation stage pos	-190.132523	-190.1400660498719			
[mm] SIM translation stage offset	0	0.00754346686406393			
[s] Observation start time (MET)	300731559.184000	300730414.62726			
Observation start date	2007-07-13T16:31:34	2007-07-13T16:13:34			
[s] Observation end time (MET)	300759759.184000	300760607.0287			
Observation end date	2007-07-14T00:21:34	2007-07-14T00:36:47			
Read mode	TIMED	TIMED			

## 2.3 Aspect



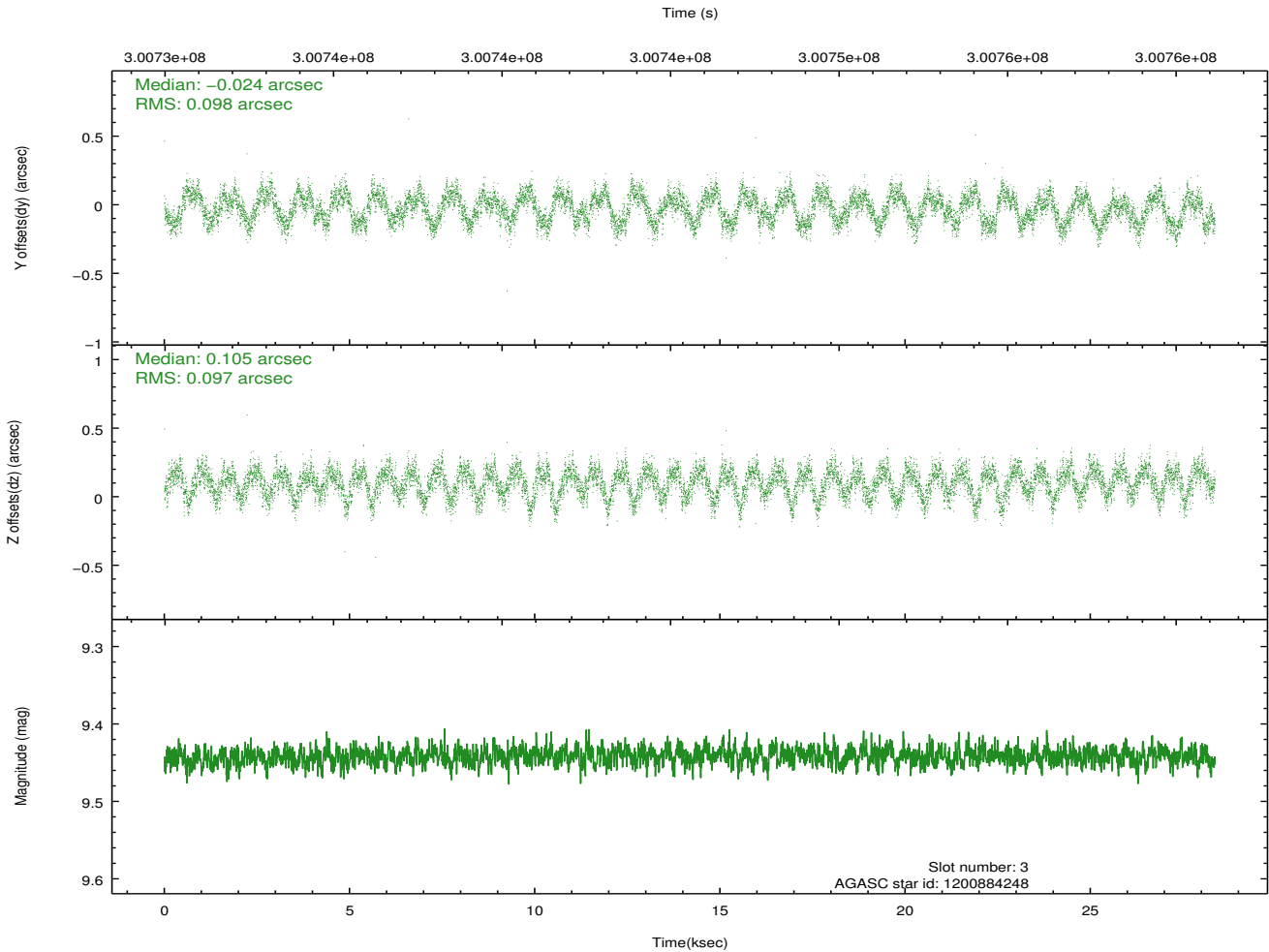
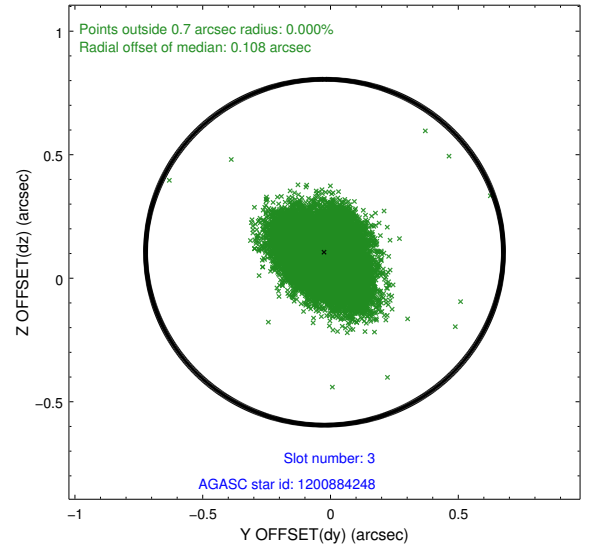
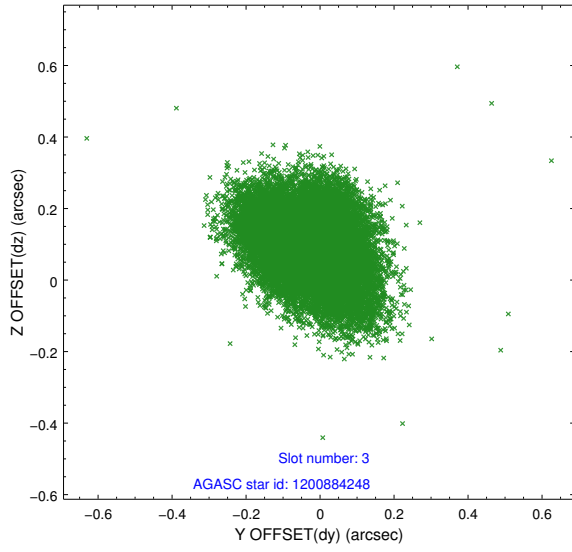


### Slot Statistics

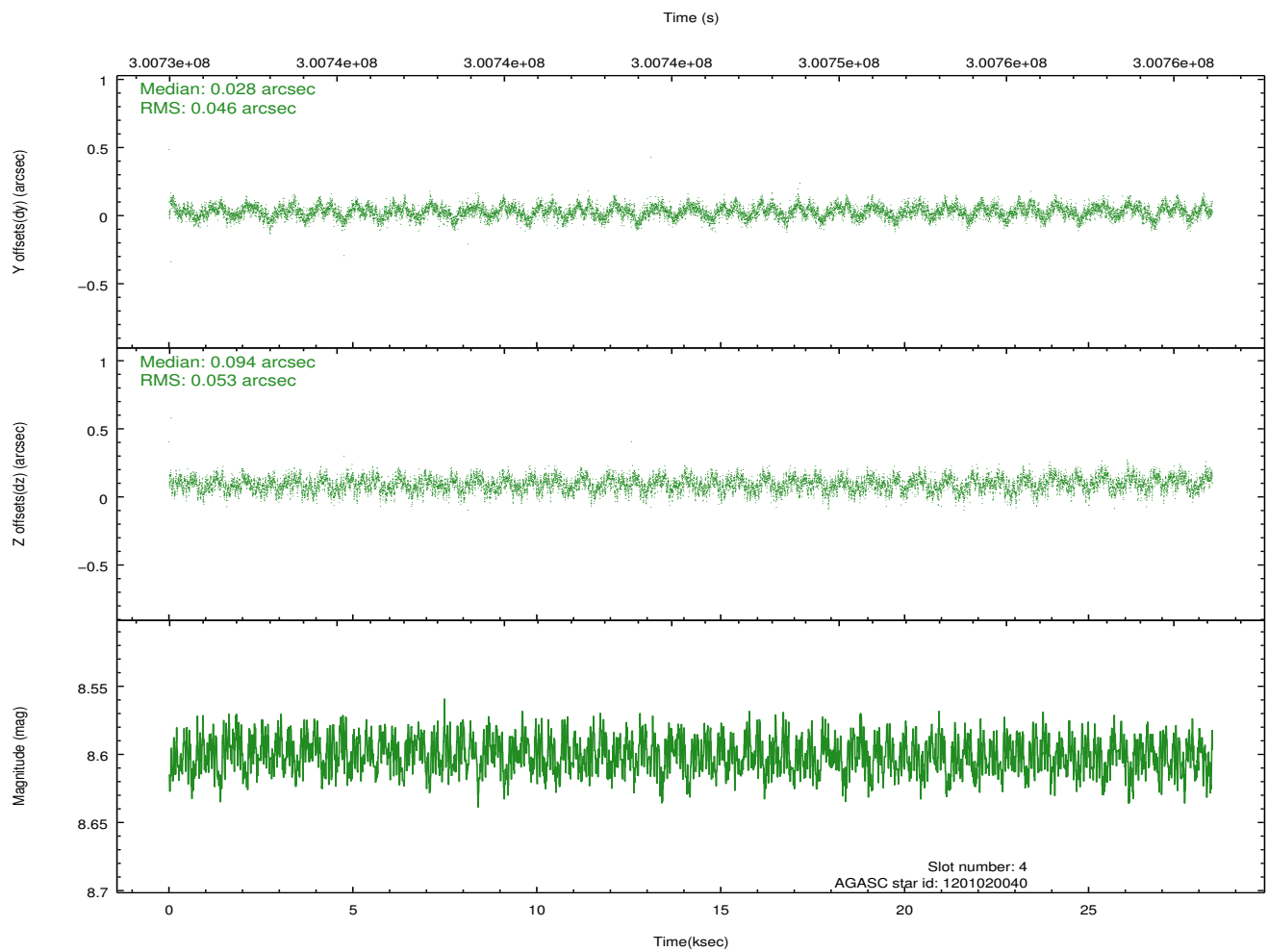
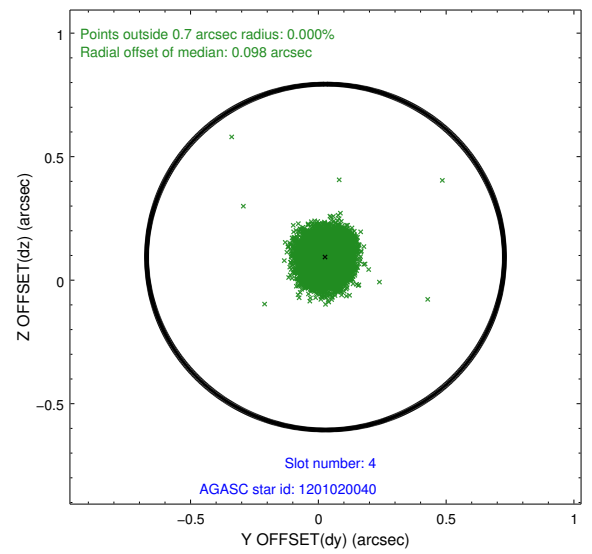
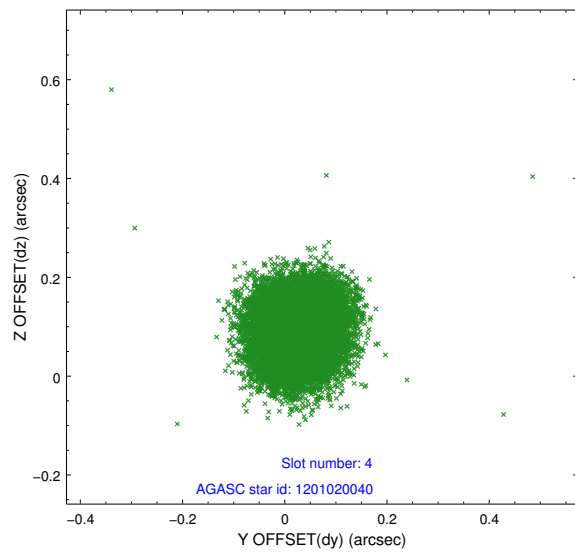
slot	status	id	mag	n_pts	med_dy	med_dz	dr1	dr2	ra	dec	mean_y	mean_z
0	FID	ACIS-S-2	7.09	6918	-0.059	-0.058	0.016	0.026	0.000000	0.000000	-766.41	-1735.82
1	FID	ACIS-S-4	7.19	6916	0.203	0.043	0.012	0.021	0.000000	0.000000	2147.07	172.69
2	FID	ACIS-S-5	7.22	6917	-0.175	0.022	0.014	0.024	0.000000	0.000000	-1819.27	166.41
3	GUIDE	1200884248	9.44	13818	-0.024	0.105	0.147	0.227	83.880915	-68.565170	1182.83	-2237.59
4	GUIDE	1201020040	8.60	13828	0.028	0.094	0.075	0.118	85.379163	-68.879396	-1071.31	-2068.57
5	GUIDE	1201542672	8.19	13832	0.076	-0.163	0.082	0.130	84.492488	-69.957531	-1725.96	1916.69
6	GUIDE	1201019672	6.83	13834	-0.087	0.014	0.062	0.101	85.312192	-68.770187	-826.15	-2387.56
7	GUIDE	1201540776	9.57	13820	0.018	-0.049	0.113	0.192	85.107945	-69.858480	-2258.79	1267.87

## 2.4 Star Slots

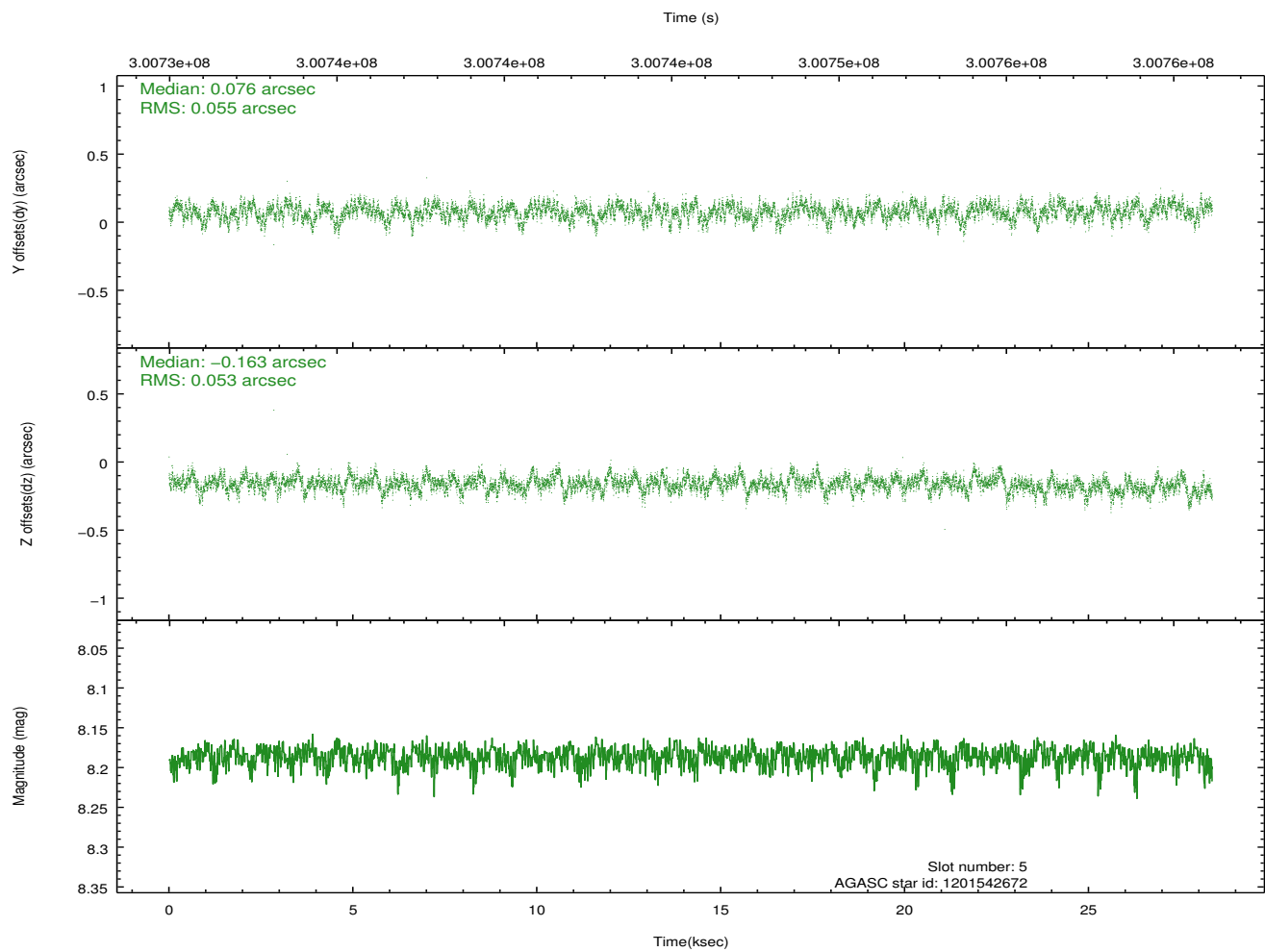
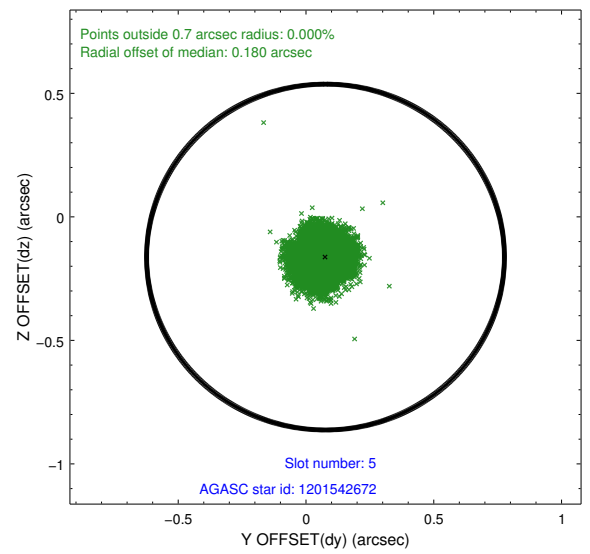
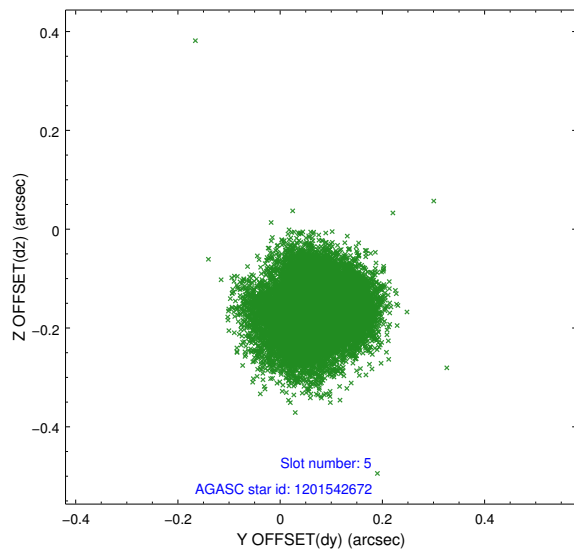
### 2.4.1 Slot 3



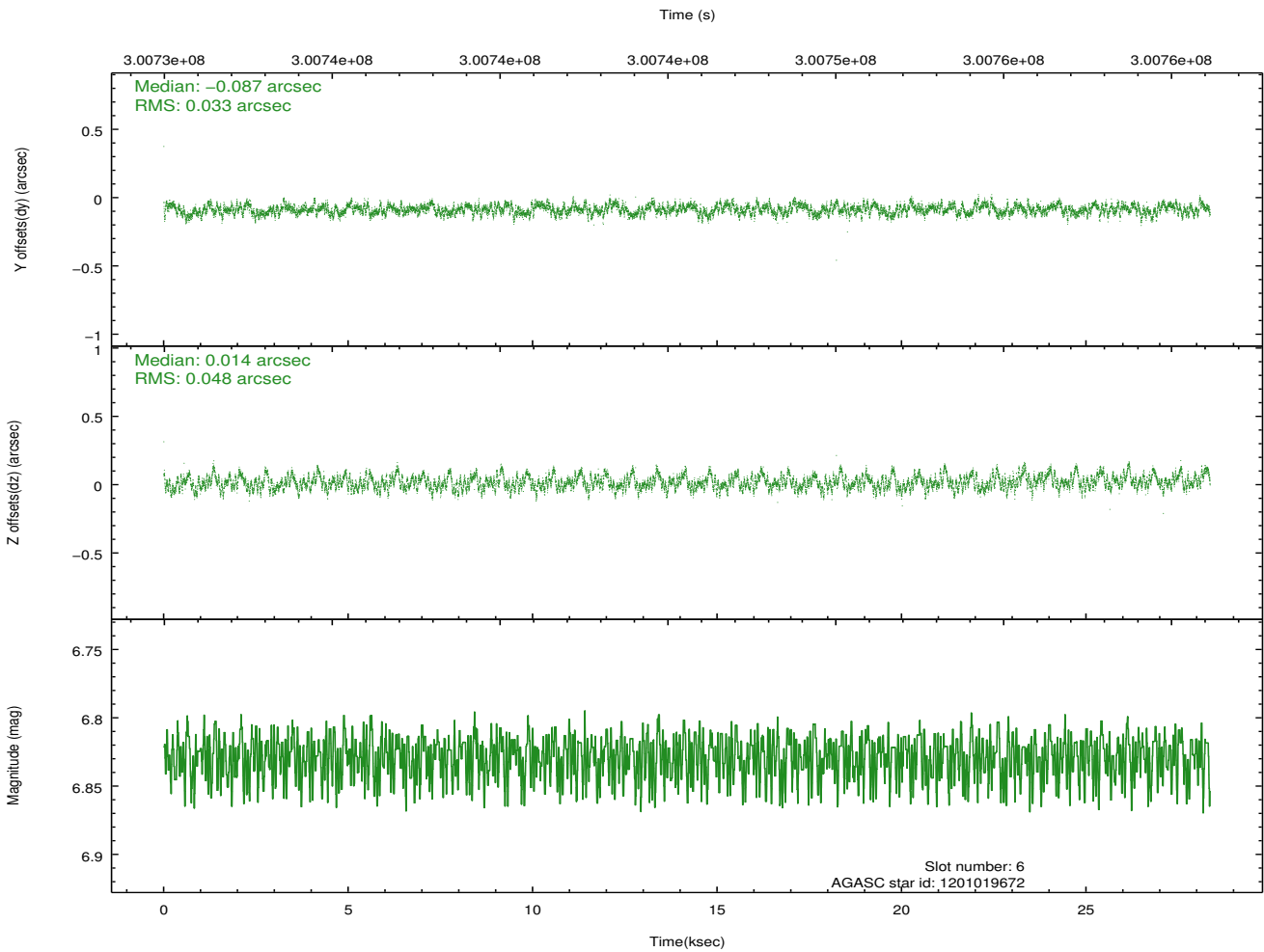
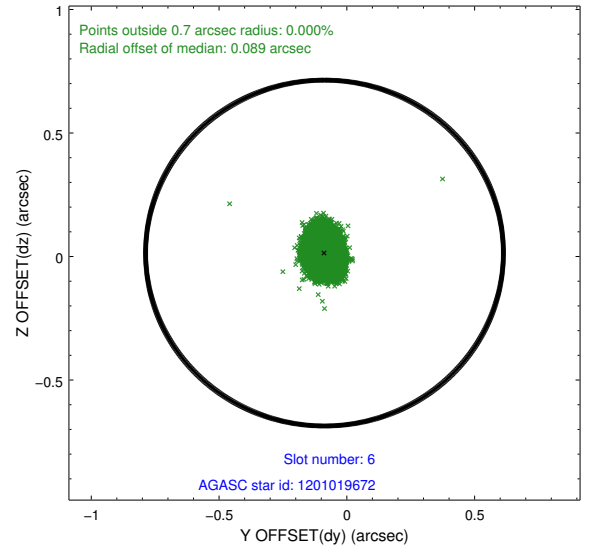
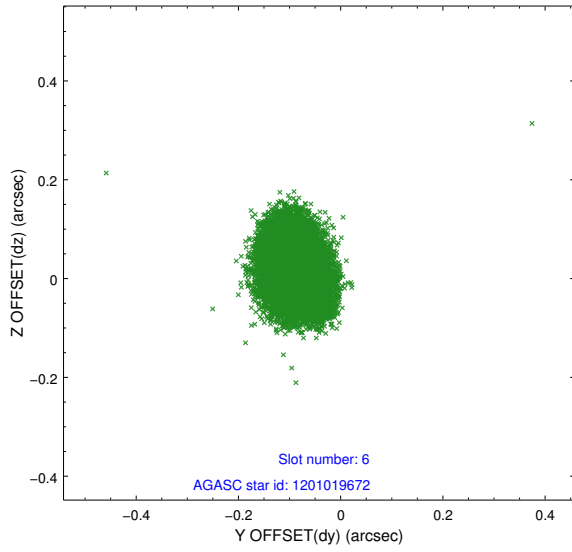
## 2.4.2 Slot 4



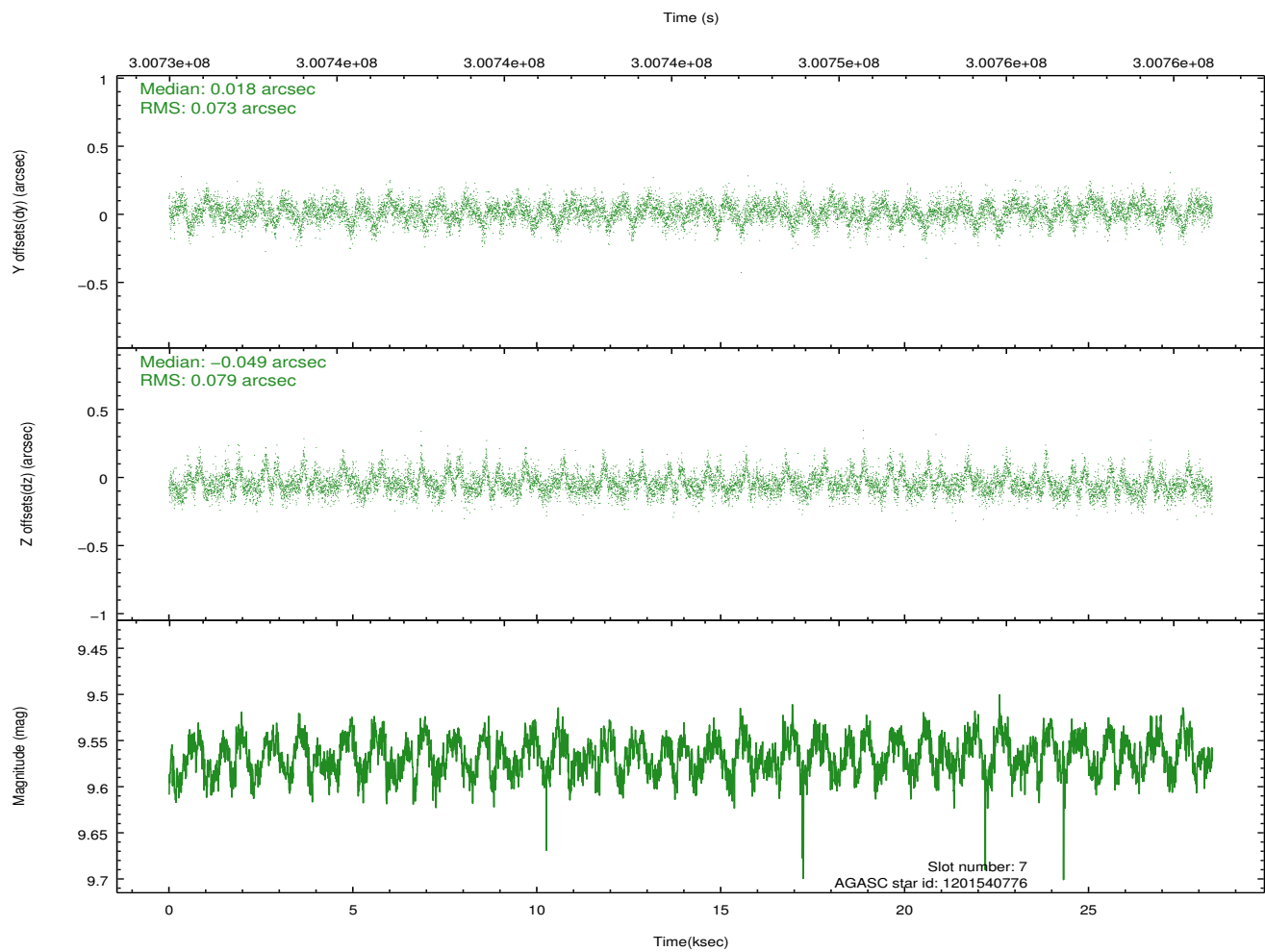
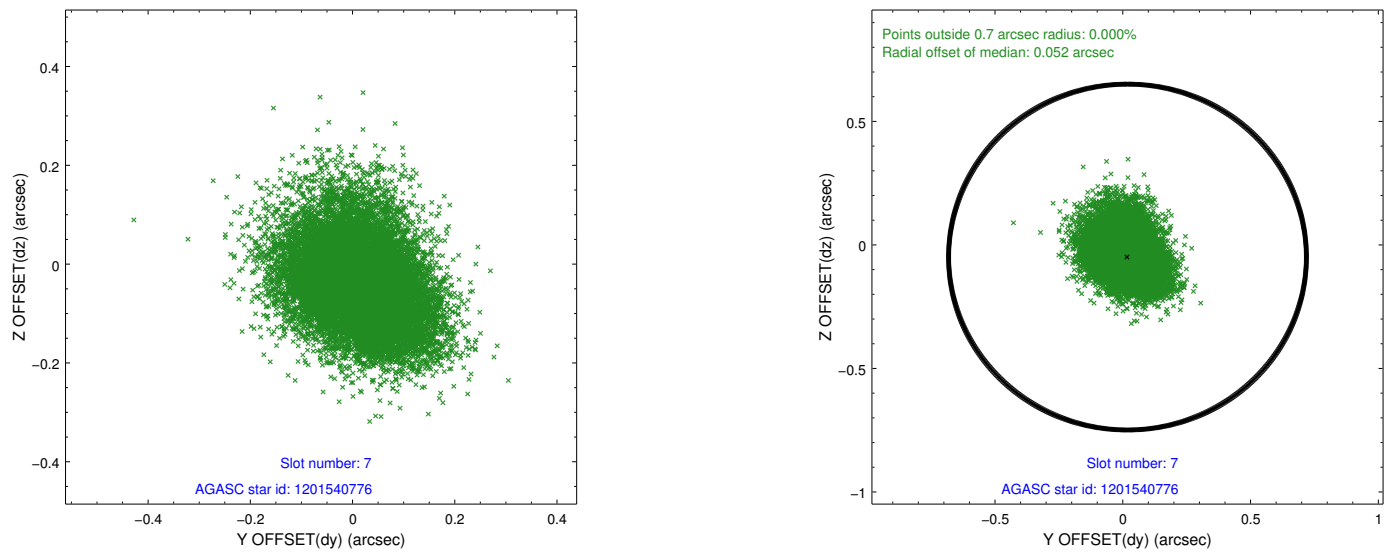
### 2.4.3 Slot 5



### 2.4.4 Slot 6

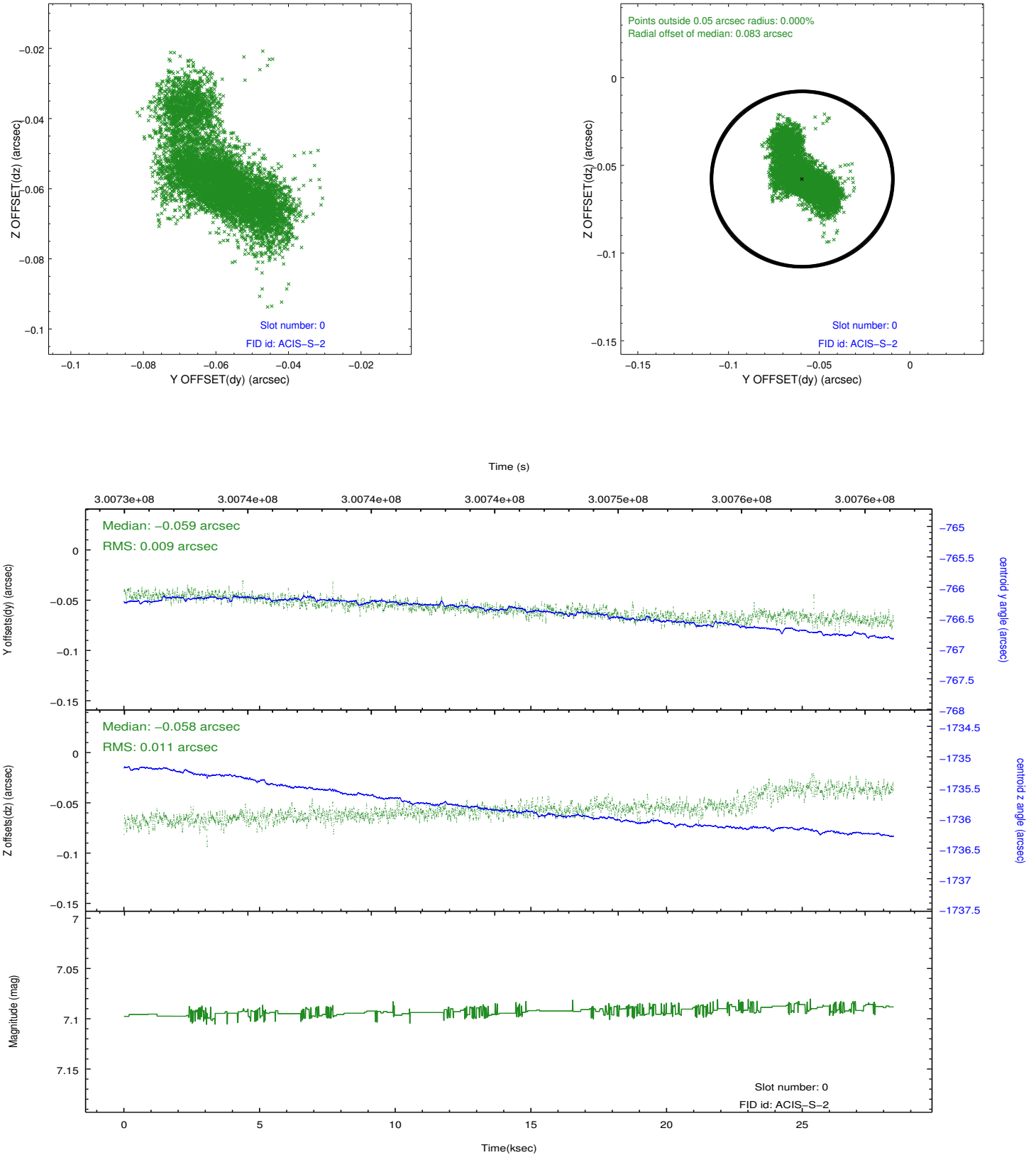


## 2.4.5 Slot 7

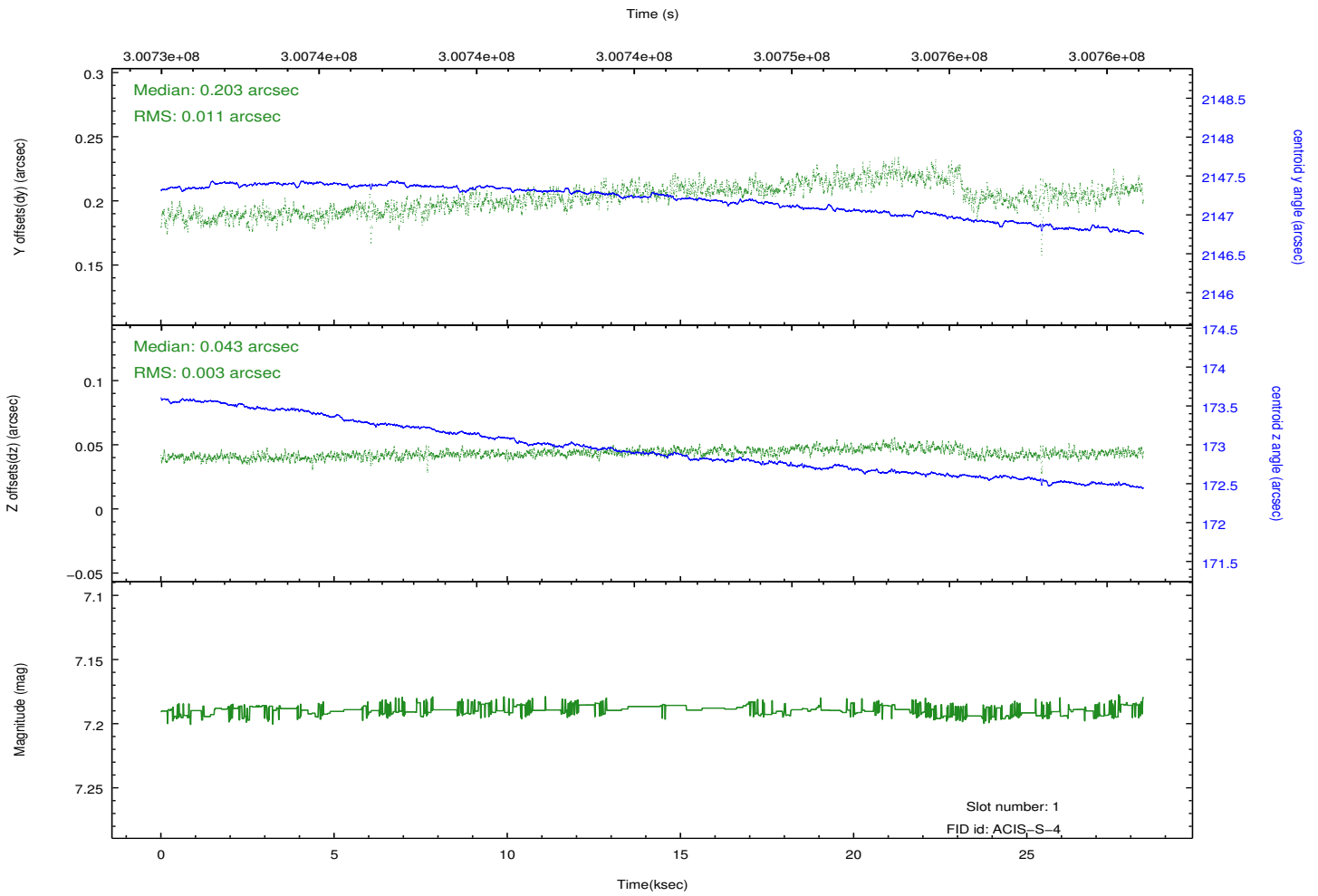
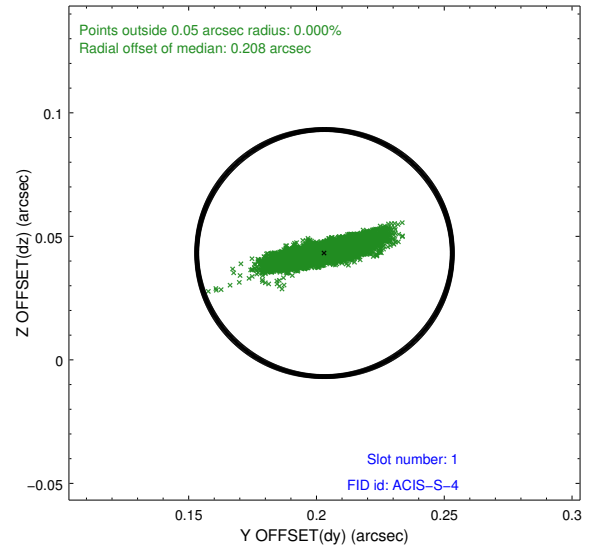
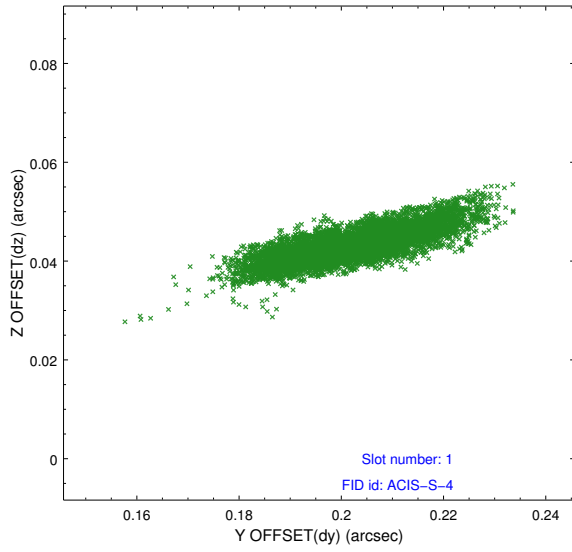


## 2.5 FID Slots

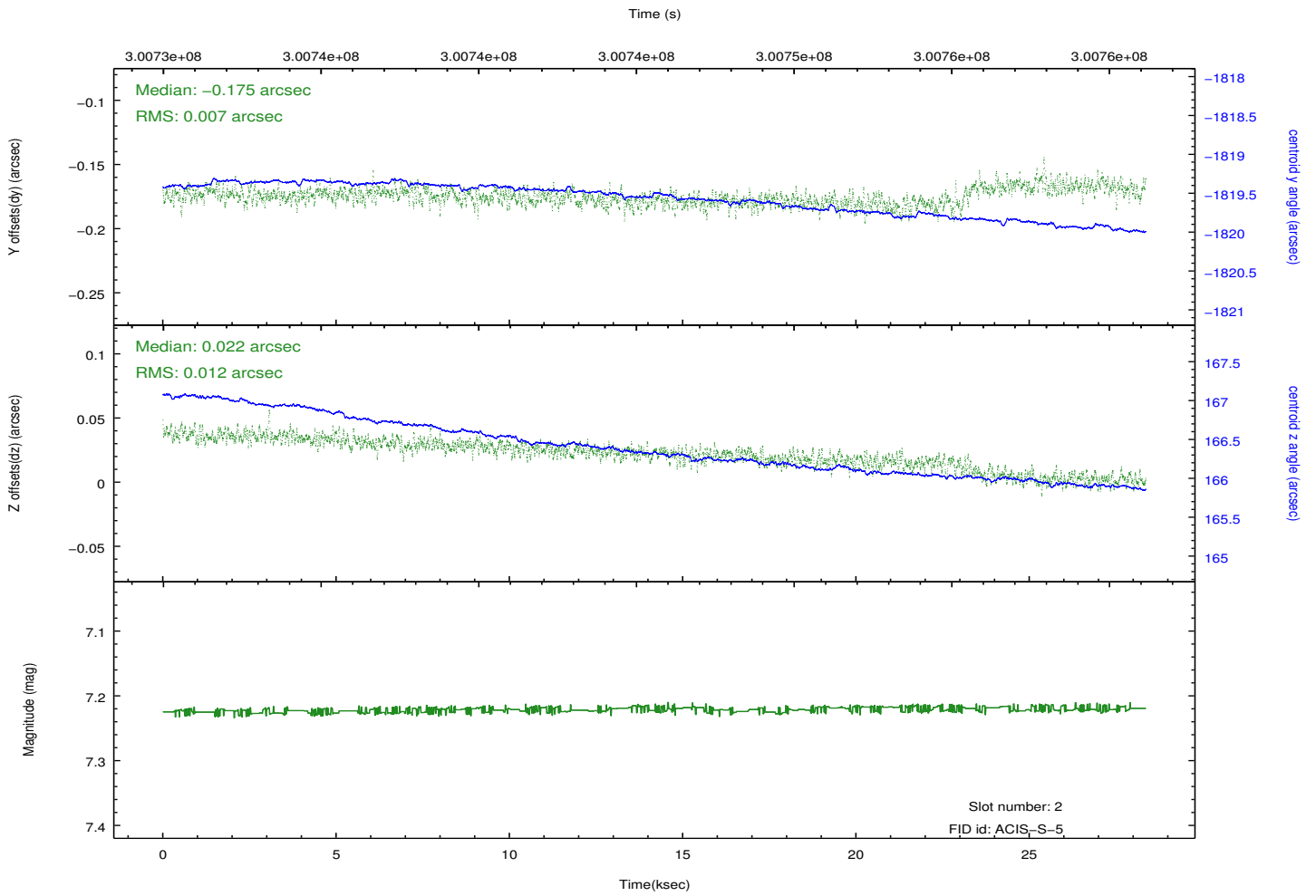
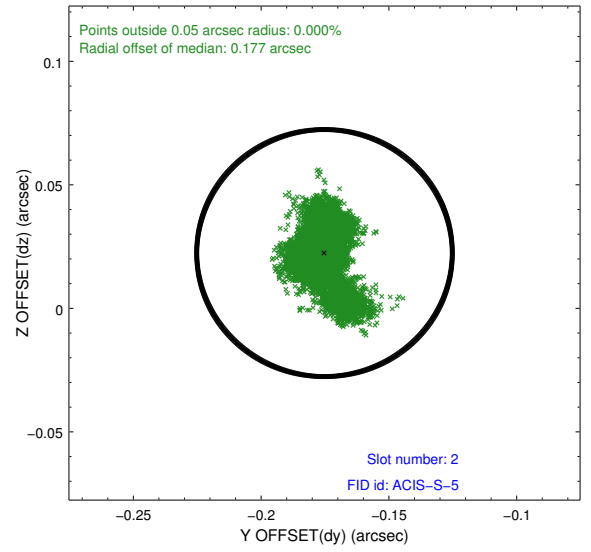
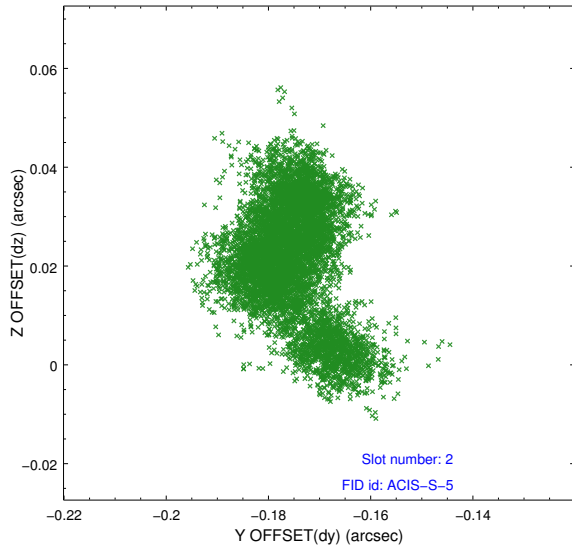
### 2.5.1 Slot 0



## 2.5.2 Slot 1



### 2.5.3 Slot 2



# A Summary

## A.1 Status

V&V Scientist	Jen Lauer
V&V Date (YYYY-MM-DD)	2012.04.30
V&V Edition	1
V&V Disposition and Status	OK
V&V Charge Time	28.3607983

## A.2 Comments

Monitoring constraint met.