

V&V Reference Report

L2 ASCDS Version : 8.4.5

Observation 777 - L2 Version 4
Chandra X-Ray Center

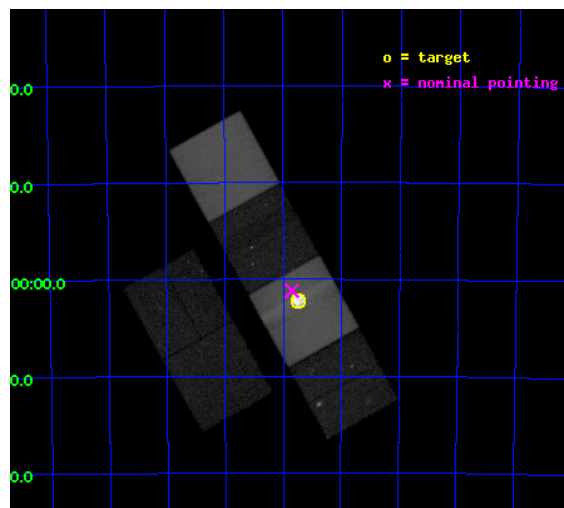
L2 Processing Date : Sep 2 2012

Contents

1	Front	2
2	OBI	3
2.1	OBI	3
2.1.1	Images	3
2.1.2	Bias	3
2.1.3	Parameters	4
2.1.4	Events	4
2.2	Compared Parameters	5
2.3	Aspect	6
2.4	Star Slots	9
2.4.1	Slot 3	9
2.4.2	Slot 4	10
2.4.3	Slot 5	11
2.4.4	Slot 6	12
2.4.5	Slot 7	13
2.5	FID Slots	14
2.5.1	Slot 0	14
2.5.2	Slot 1	15
2.5.3	Slot 2	16
A	Summary	17
A.1	Status	17
A.2	Comments	17

1 Front

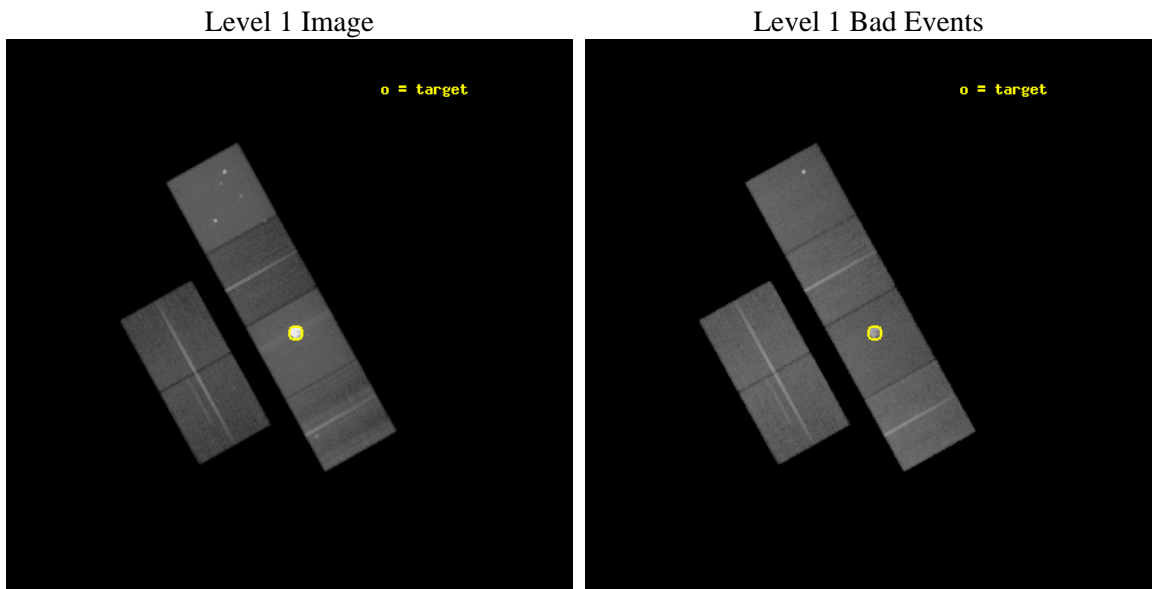
seq_num	500073	Sequence number
obs_id	777	Observation id
title	A SYSTEMATIC STUDY OF LMC SNRS WITH AXAF	Proposal title
observer	Prof. John Hughes	Principal investigator
object	N63A	Source name
dtycycle	0	
cycle	P	events from which exps? Prim/Second/Both
ra_targ	83.93375	Observer's specified target RA [deg]
dec_targ	-66.037222	Observer's specified target Dec [deg]
ra_nom	83.962680447461	Nominal RA [deg]
dec_nom	-66.019855577906	Nominal Dec [deg]
roll_nom	60.884041118434	Nominal Roll [deg]
revision	4	Processing version of data
ontime	43906.19257319	Sum of GTIs [s]
livetime	43350.225925693	Livetime [s]
ontime2	43906.233613193	Sum of GTIs [s]
ontime3	43906.069423288	Sum of GTIs [s]
ontime5	43906.151563093	Sum of GTIs [s]
ontime6	43906.110493198	Sum of GTIs [s]
ontime7	43906.19257319	Sum of GTIs [s]
ontime8	43906.028413191	Sum of GTIs [s]
l2events	1902178	Number of level 2 events



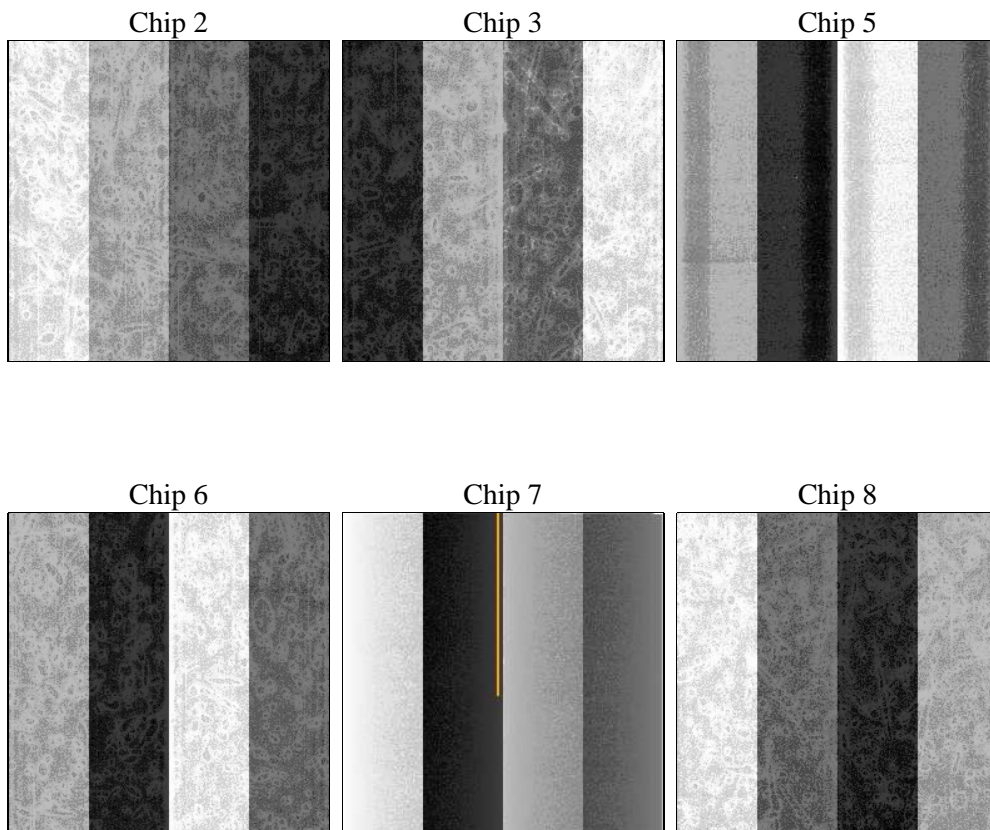
2 OBI

2.1 OBI

2.1.1 Images



2.1.2 Bias



2.1.3 Parameters

obi_num	0	Obi number	sched_exp_time	44000.000000	[s] Scheduled observation exposure time
ascdsver	8.4.5	Processing system revision	ontime	43906.19257319	Sum of GTIs [s]
caldbver	4.5.1.1	 	ontime2	43906.233613193	Sum of GTIs [s]
date	2012-09-02T11:11:38	Date and time of file creation	ontime3	43906.069423288	Sum of GTIs [s]
revision	4	Processing version of data	ontime5	43906.151563093	Sum of GTIs [s]
			ontime6	43906.110493198	Sum of GTIs [s]
			ontime7	43906.19257319	Sum of GTIs [s]
			ontime8	43906.028413191	Sum of GTIs [s]
			l1events	3573210	Number of level 1 events

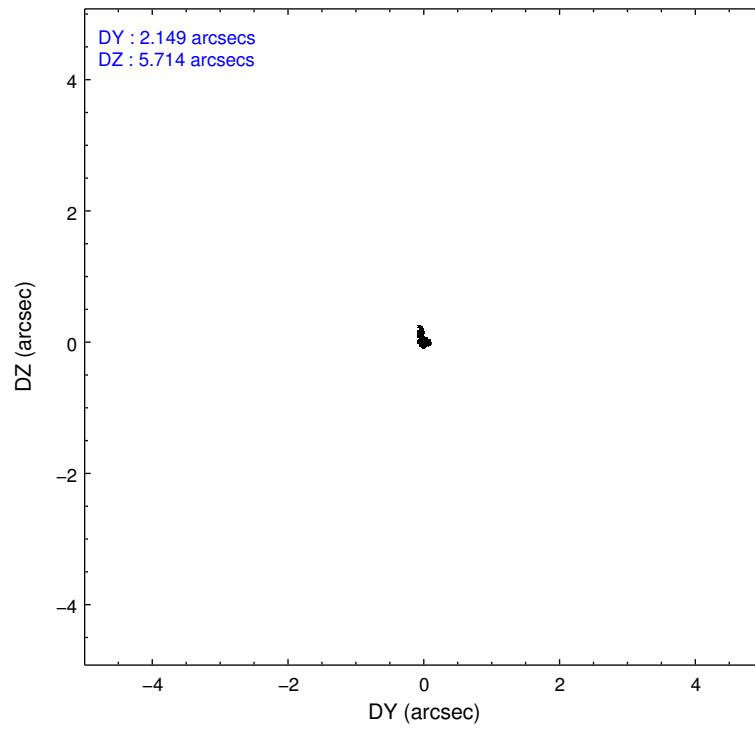
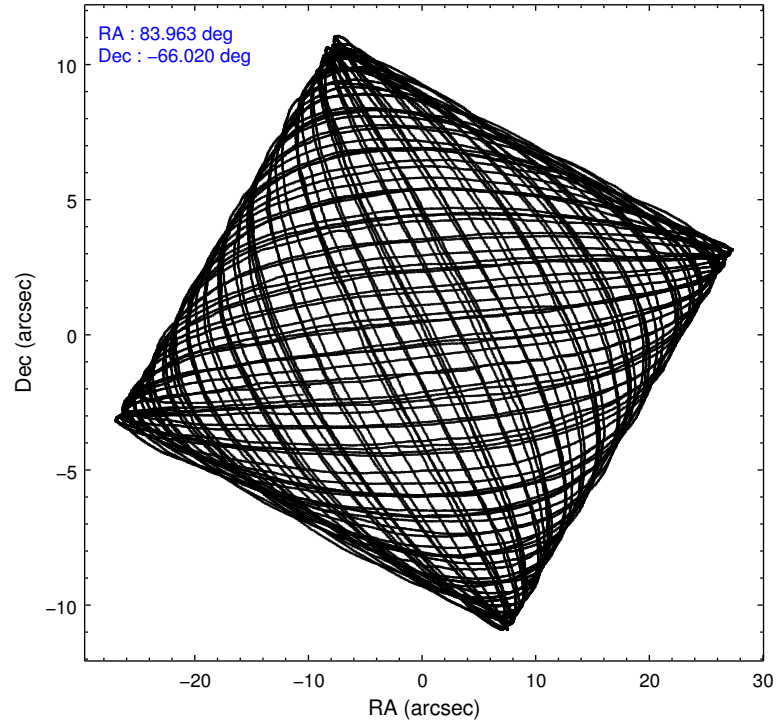
2.1.4 Events

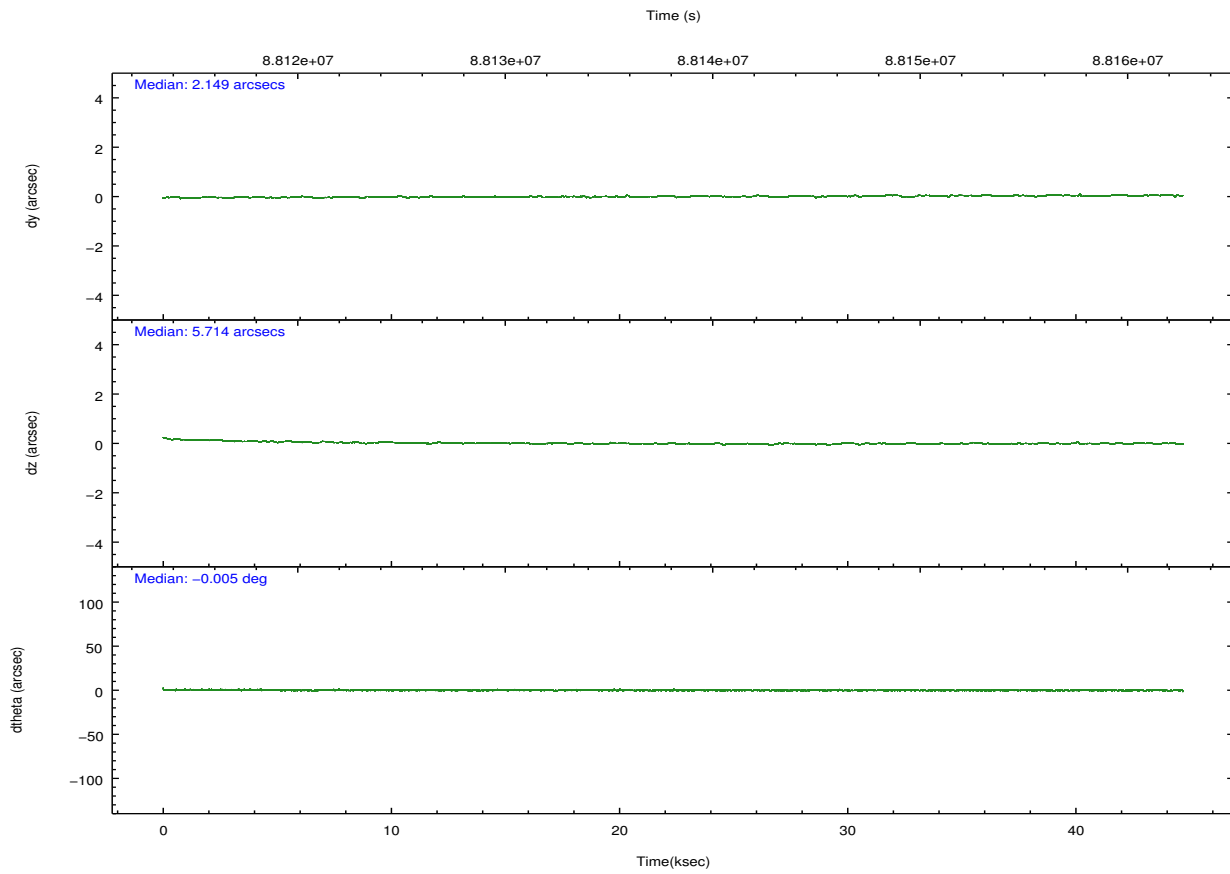
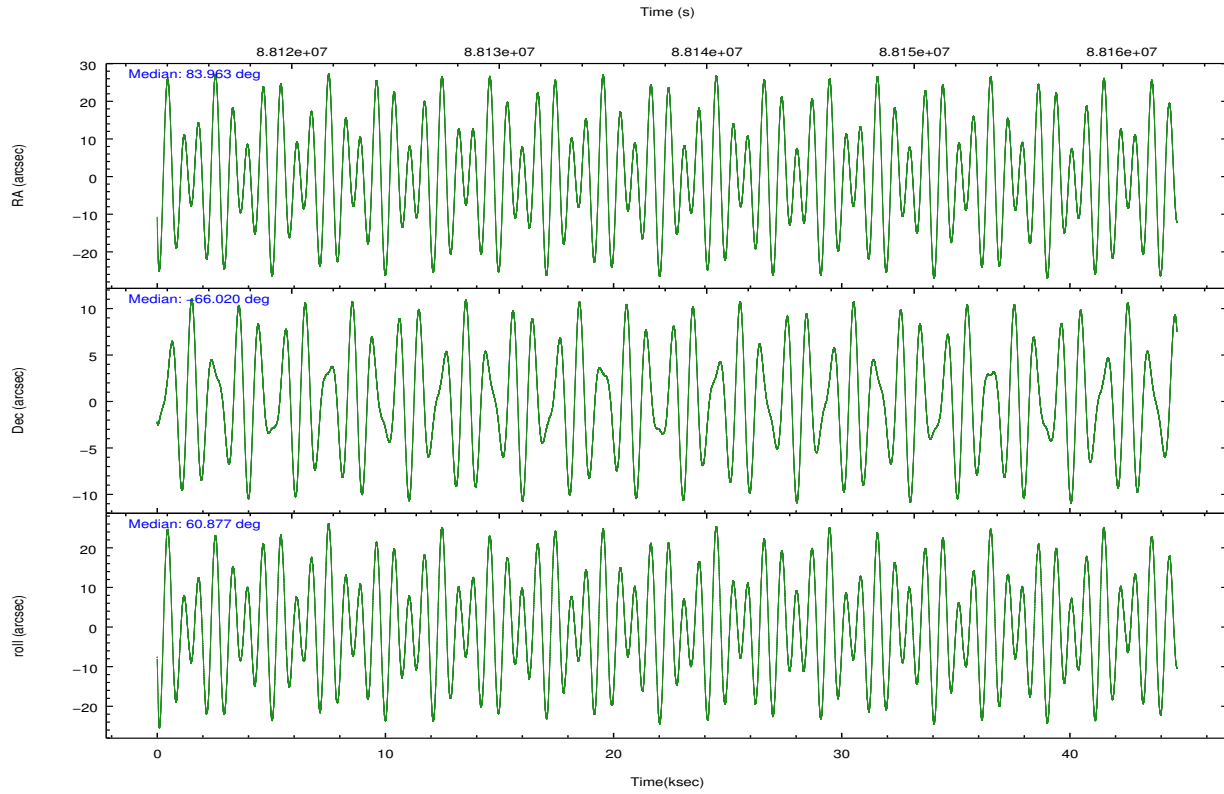
	ccd 2	ccd 3	ccd 5	ccd 6	ccd 7	ccd 8		ccd 2	ccd 3	ccd 5	ccd 6	ccd 7	ccd 8
level 1 events	307606	288940	538805	302915	1719252	415692	grade 0 events	17159	16259	55873	20673	459848	39814
rejected events	270849	254397	222915	261316	243615	296347		5%	5%	10%	6%	26%	9%
rejected %	88%	88%	41%	86%	14%	71%	grade 1 events	107	139	9380	160	9533	305
								0%	0%	1%	0%	0%	0%
							grade 2 events	7884	6681	86254	7887	372622	21957
								2%	2%	16%	2%	21%	5%
							grade 3 events	3047	3022	18044	3414	167630	15488
								0%	1%	3%	1%	9%	3%
							grade 4 events	3126	3083	17735	3287	165998	13658
								1%	1%	3%	1%	9%	3%
							grade 5 events	9329	10190	30975	11137	54476	14793
								3%	3%	5%	3%	3%	3%
							grade 6 events	5544	5502	138044	6342	309789	28446
								1%	1%	25%	2%	18%	6%
							grade 7 events	261410	244064	182500	250015	179356	281231
								84%	84%	33%	82%	10%	67%

2.2 Compared Parameters

Parameter	Planned	Actual	Parameter	Planned	Actual
Instrument	ACIS	ACIS	Obspar format version number	7	7
Detector	ACIS-235678	ACIS-235678	Obspar file type	PREDICTED	ACTUAL
Grating	NONE	NONE	Obspar update status	NONE	UPDATED
Data mode	FAINT	FAINT	Number of optional ACIS chips dropped	0	0
Observation mode	POINTING	POINTING	On-chip summing requested	N	N
[deg] Pointing RA	83.964180	83.96268044746083	Subarray requested	NONE	NONE
[deg] Pointing Dec	-66.047206	-66.01985557790579	Alternating exposures requested	N	N
[deg] Pointing Roll	60.728787	60.88404111843396	[s] Primary exposure time	0.000000	3.2
[mm] SIM focus pos	-0.684267	-0.6828225247311905			
[mm] SIM defocus	0	0.001444936568705701			
[mm] SIM translation stage pos	-190.132523	-190.1425803651734			
[mm] SIM translation stage offset	0	0.01005778216563158			
[s] Observation start time (MET)	88116435.184000	88115222.725776			
Observation start date	2000-10-16T20:46:11	2000-10-16T20:27:02			
[s] Observation end time (MET)	88160435.184000	88160950.540004			
Observation end date	2000-10-17T08:59:31	2000-10-17T09:09:10			
Read mode	TIMED	TIMED			

2.3 Aspect



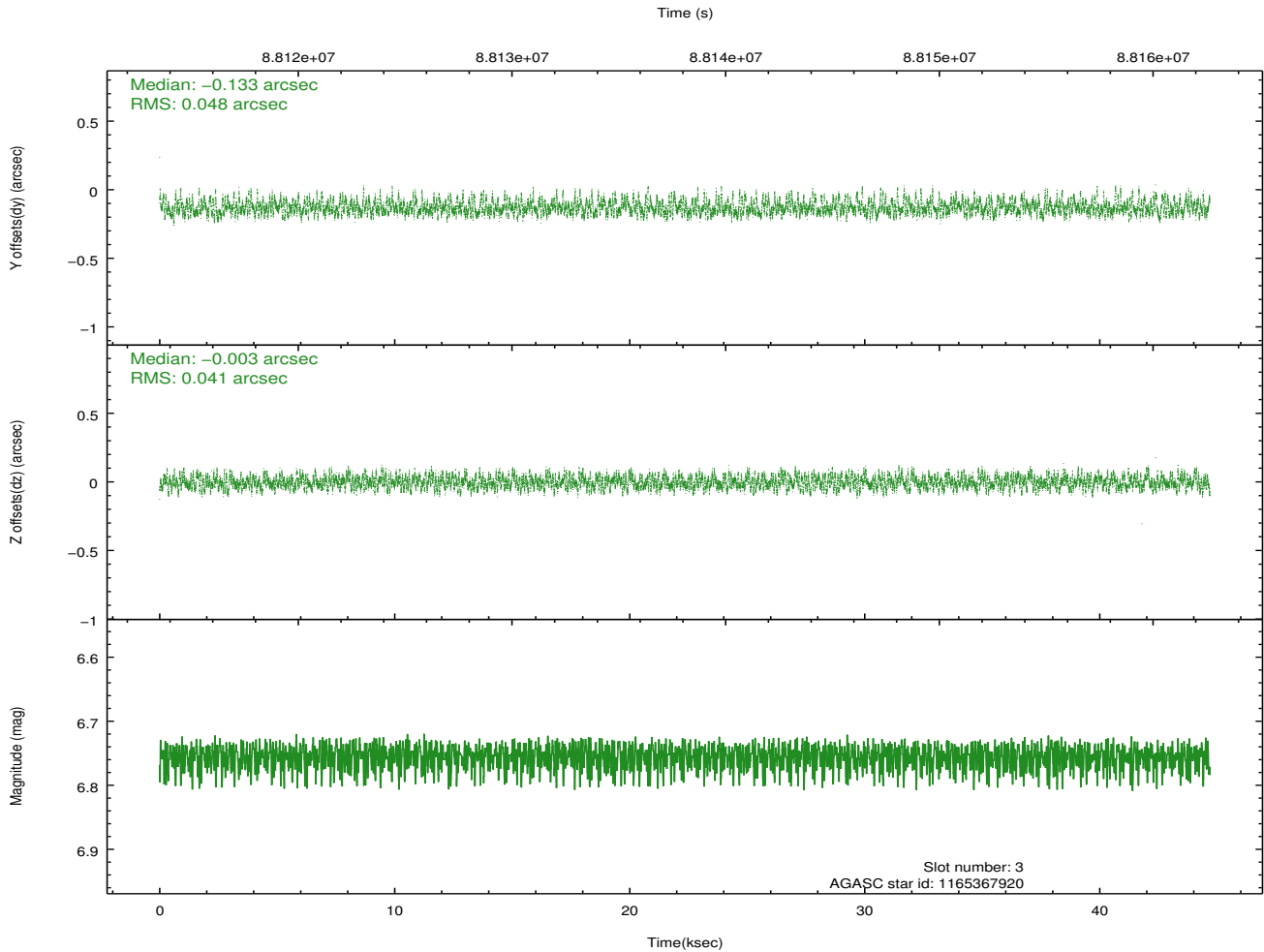
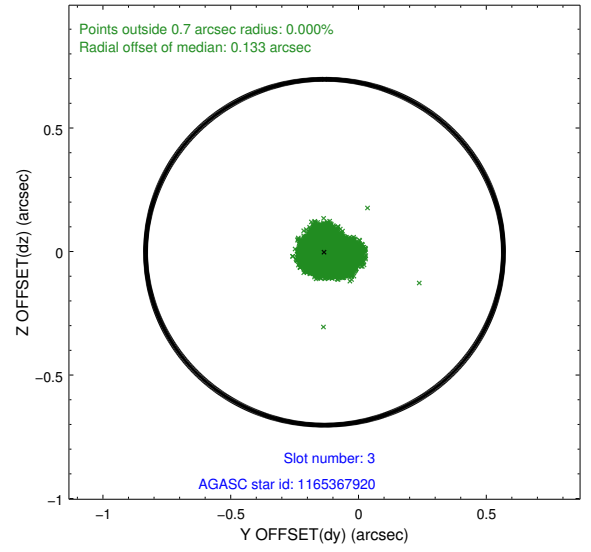
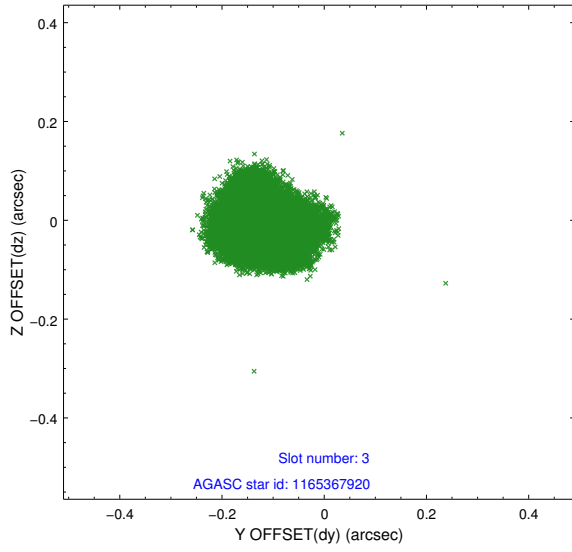


Slot Statistics

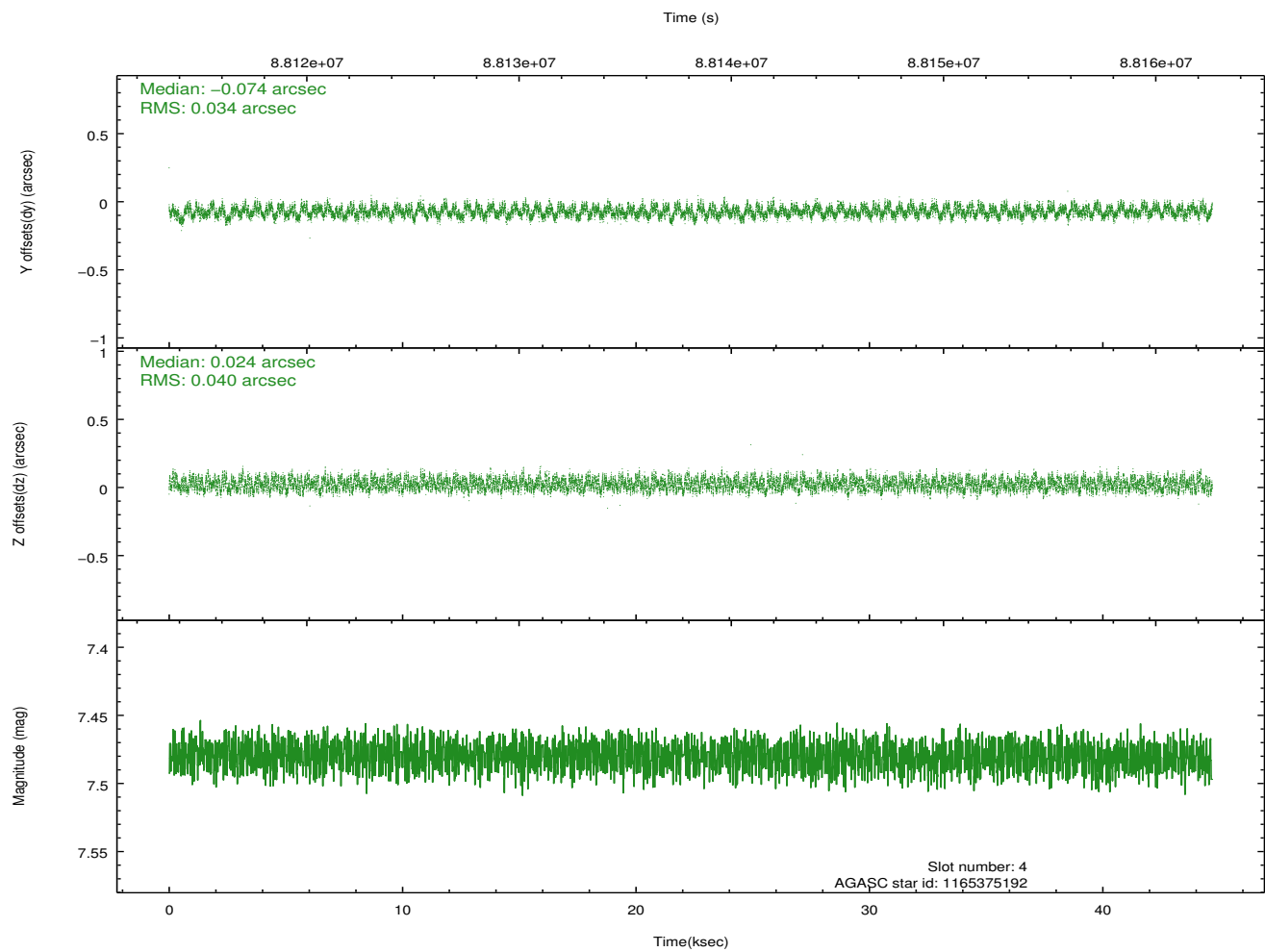
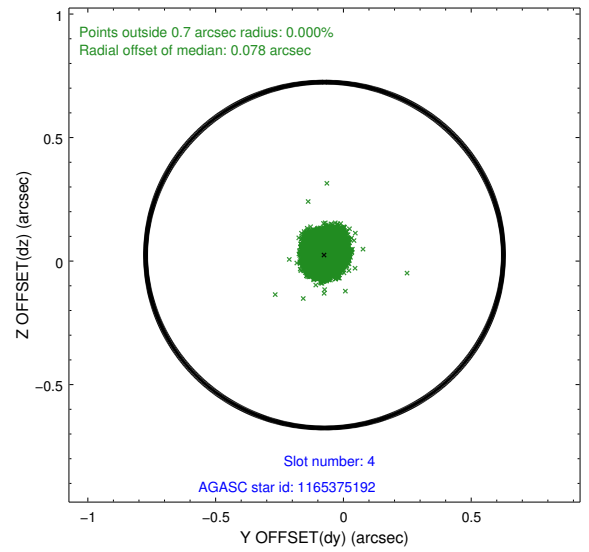
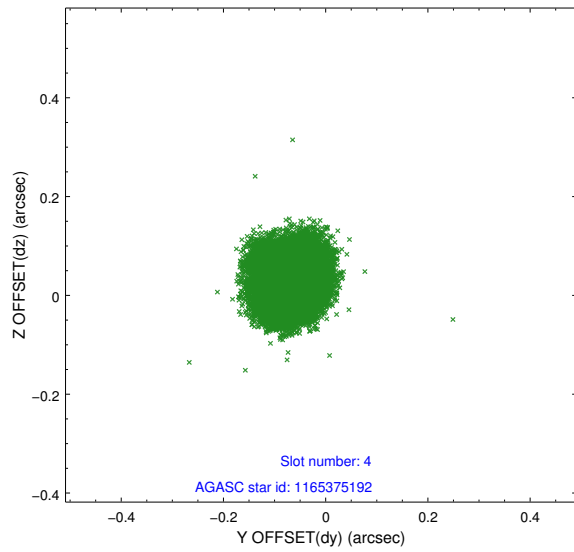
slot	status	id	mag	n_pts	med_dy	med_dz	dr1	dr2	ra	dec	mean_y	mean_z
0	FID	ACIS-S-2	7.11	10898	-0.047	-0.001	0.007	0.011	0.000000	0.000000	-754.79	-1726.82
1	FID	ACIS-S-4	7.20	10898	-0.004	0.023	0.006	0.011	0.000000	0.000000	2158.50	181.74
2	FID	ACIS-S-5	7.23	10898	0.019	-0.013	0.007	0.011	0.000000	0.000000	-1807.60	175.30
3	GUIDE	1165367920	6.76	21795	-0.133	-0.003	0.068	0.104	84.229085	-66.560284	-1426.00	-1234.17
4	GUIDE	1165375192	7.48	21800	-0.074	0.024	0.057	0.087	84.093045	-66.290326	-672.06	-590.43
5	GUIDE	1167069360	9.57	21786	0.151	0.004	0.115	0.183	85.839523	-65.726950	2327.18	-1876.57
6	GUIDE	1165371736	10.16	21667	0.132	-0.031	0.126	0.201	82.443391	-66.041658	-1092.56	1935.93
7	GUIDE	1165374200	9.85	21781	-0.080	0.002	0.110	0.177	83.207893	-65.682736	590.62	1616.82

2.4 Star Slots

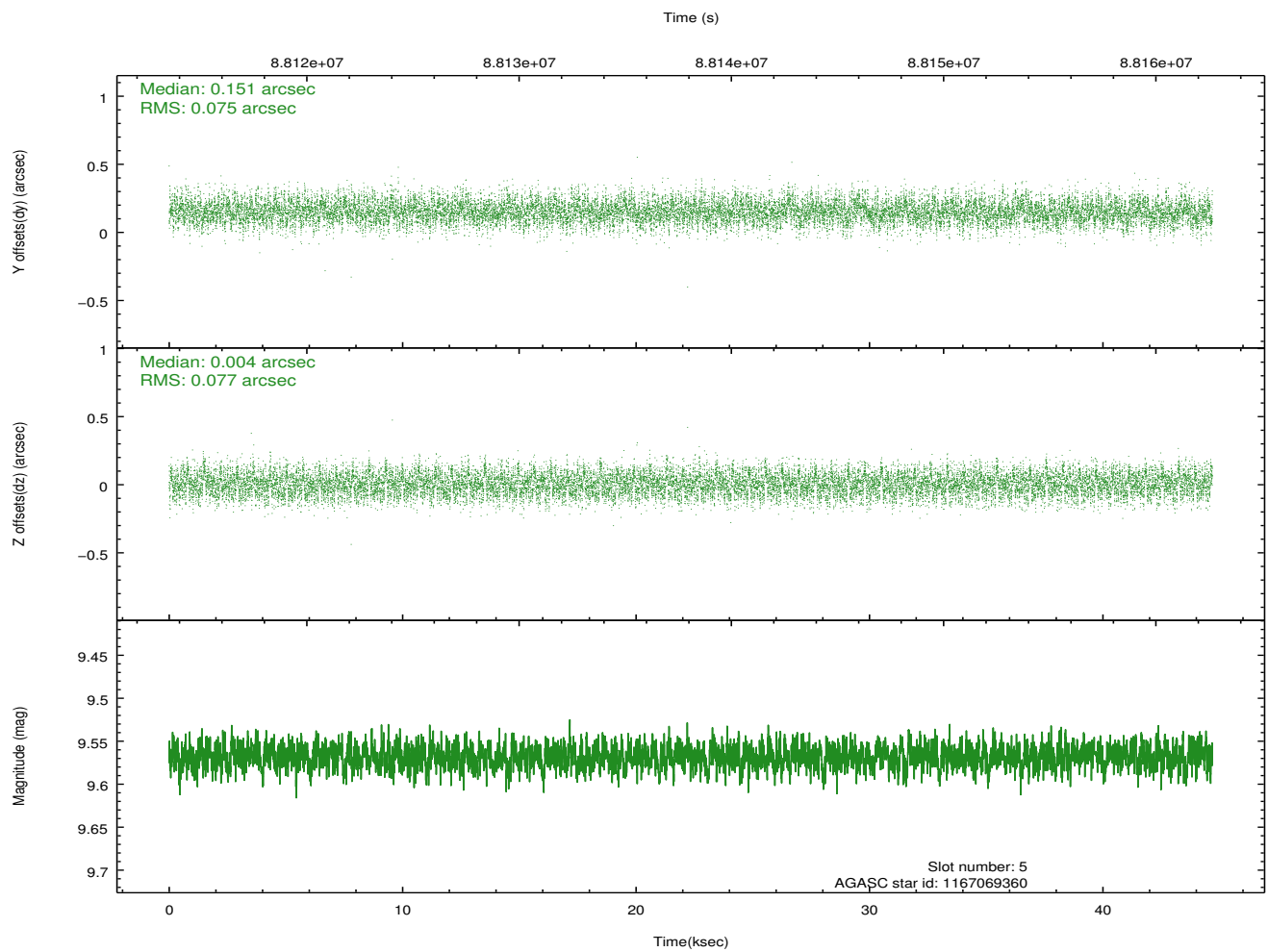
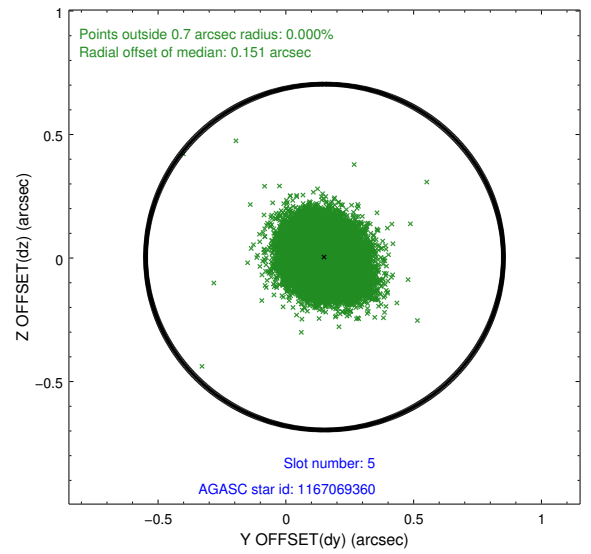
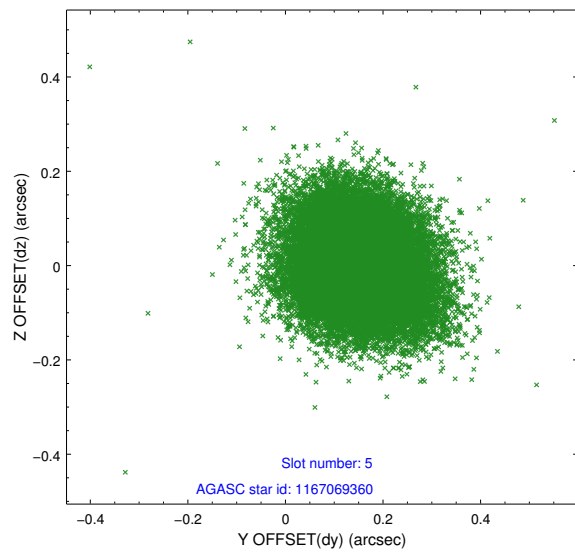
2.4.1 Slot 3



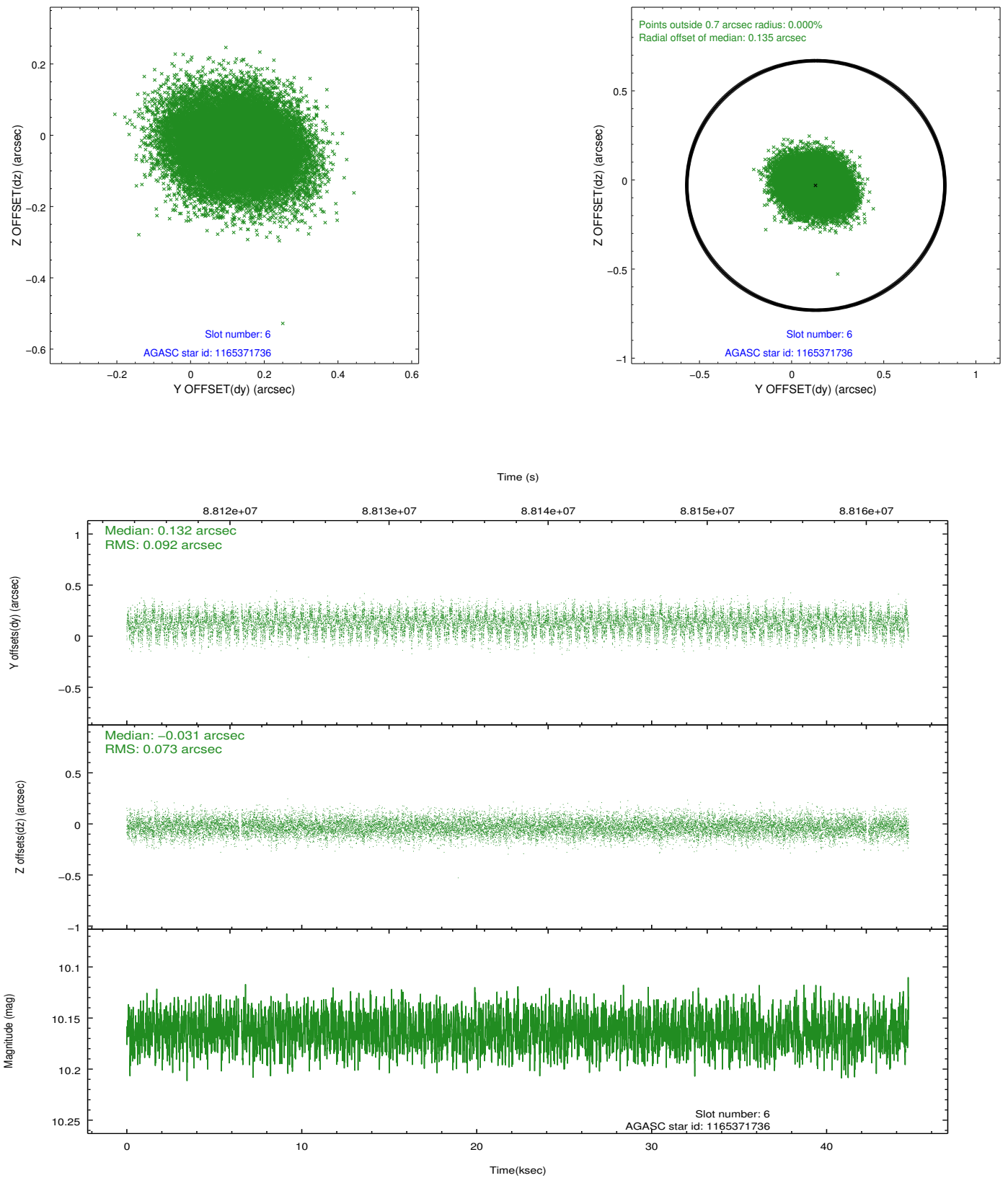
2.4.2 Slot 4



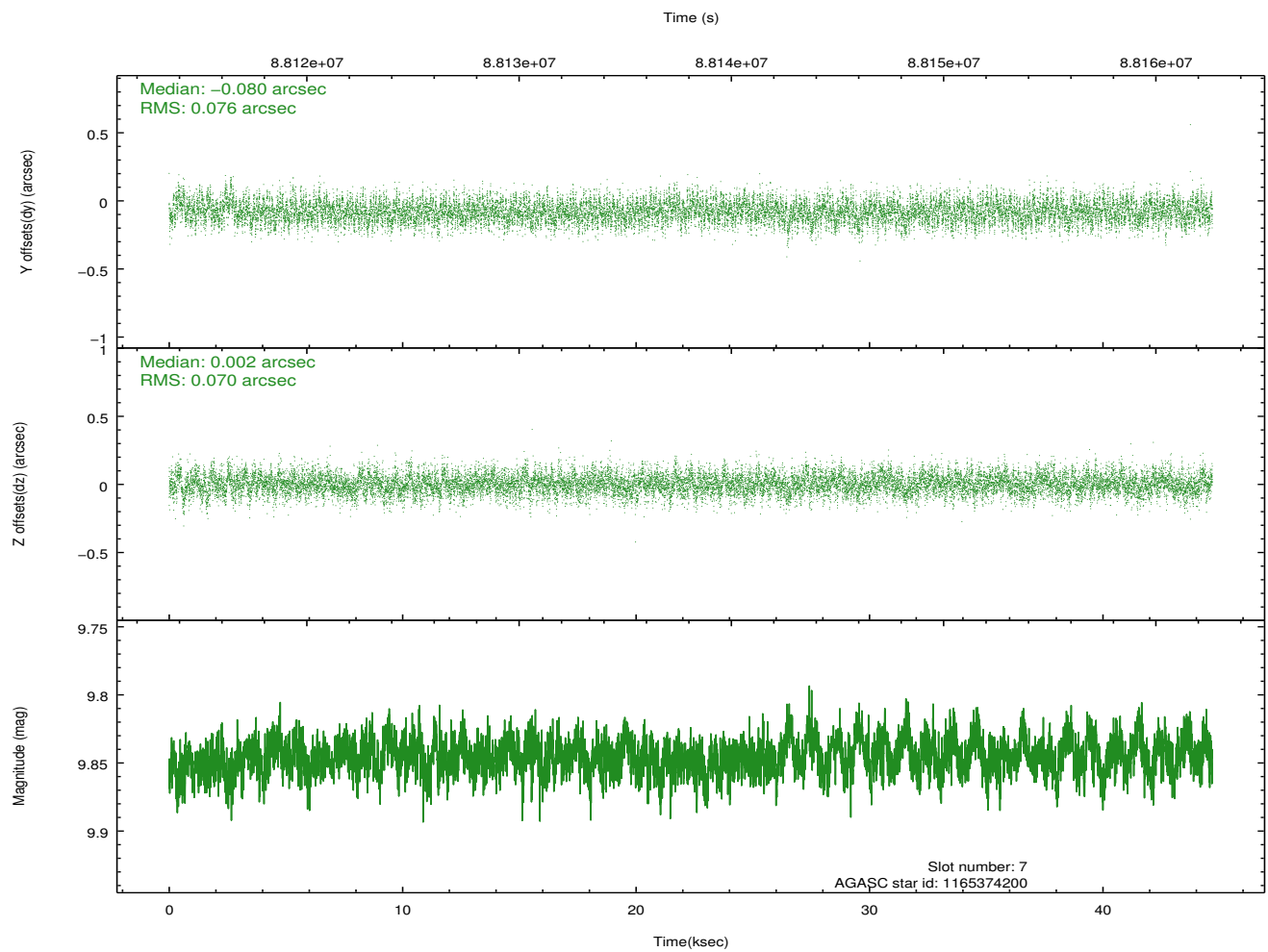
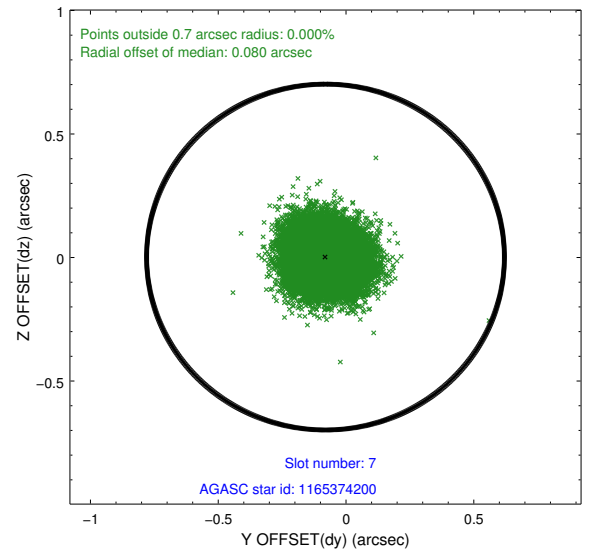
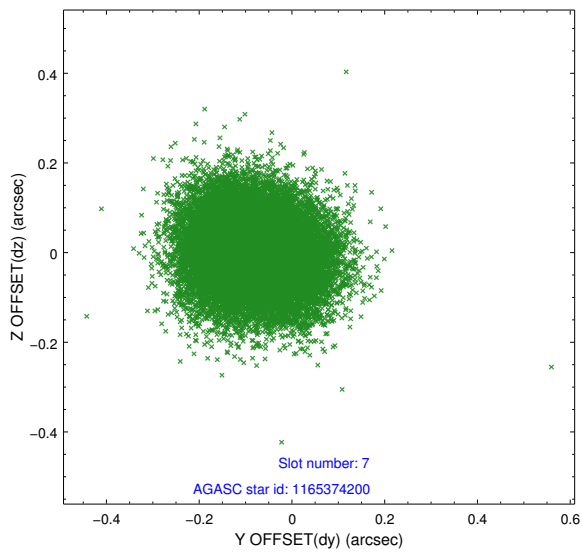
2.4.3 Slot 5



2.4.4 Slot 6

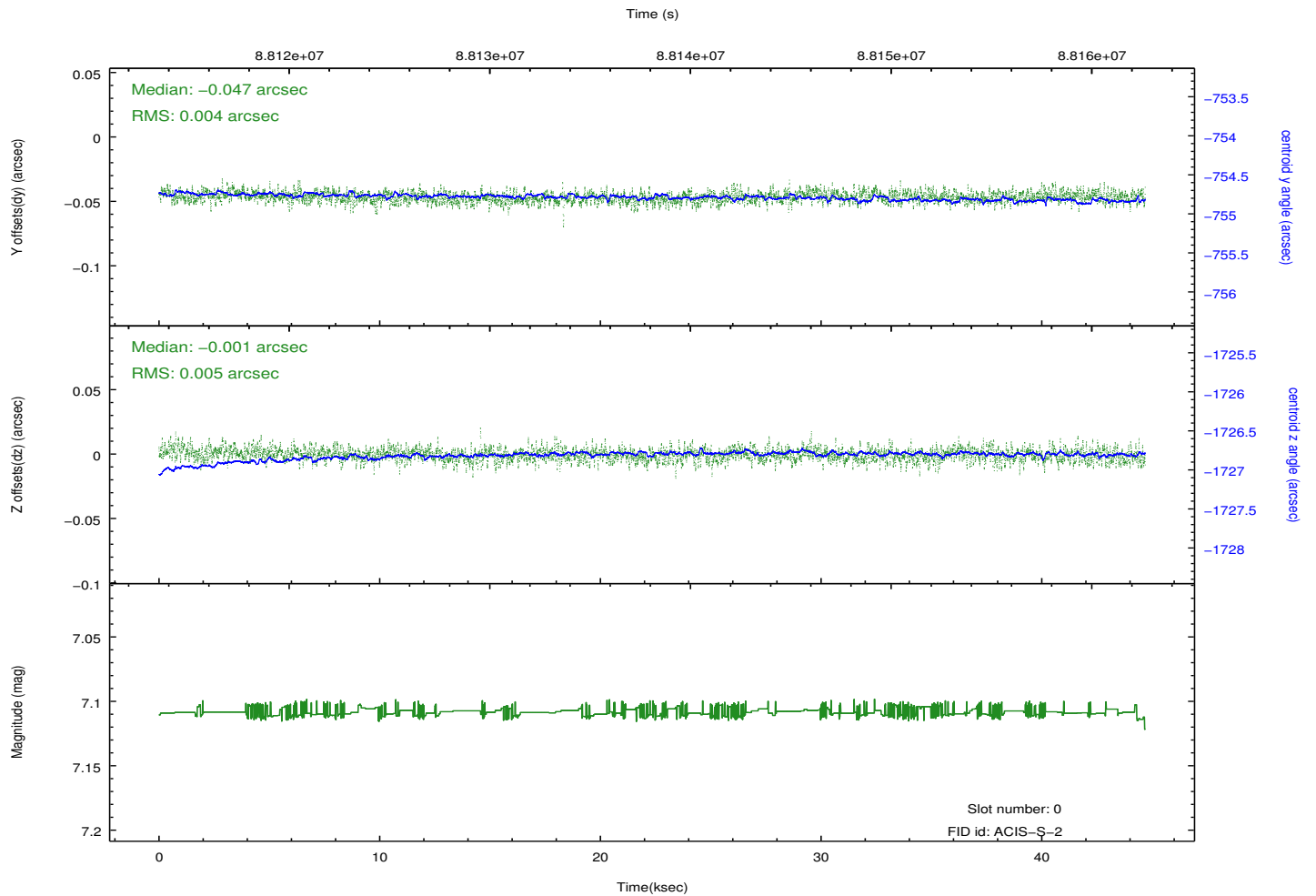
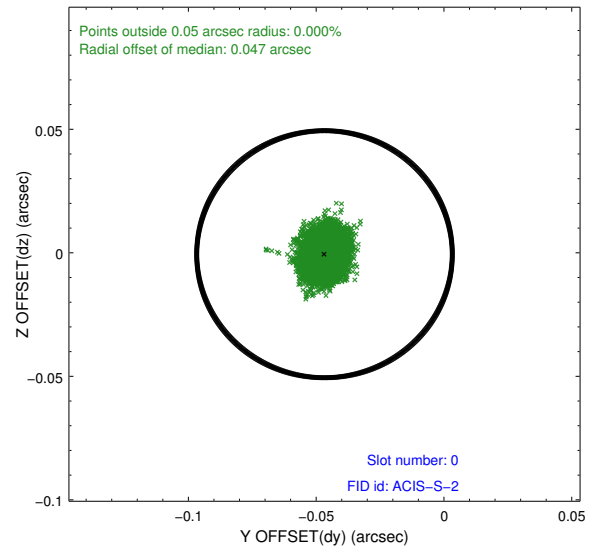
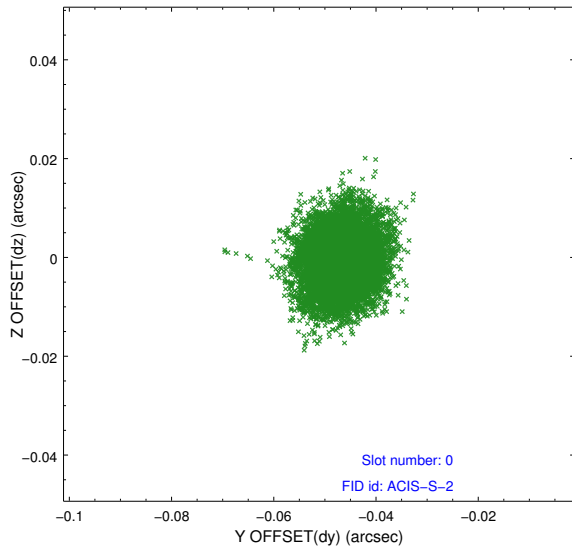


2.4.5 Slot 7

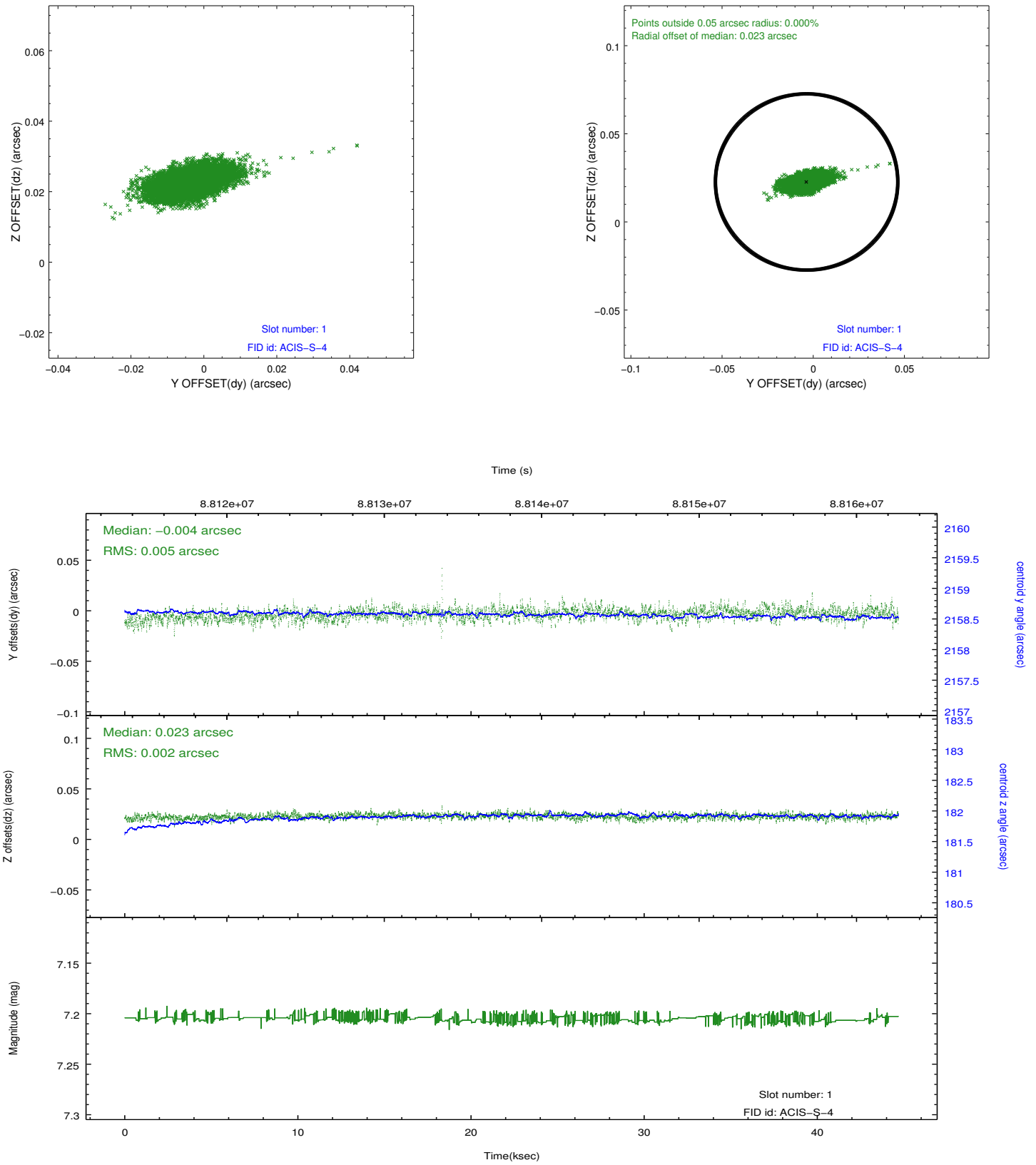


2.5 FID Slots

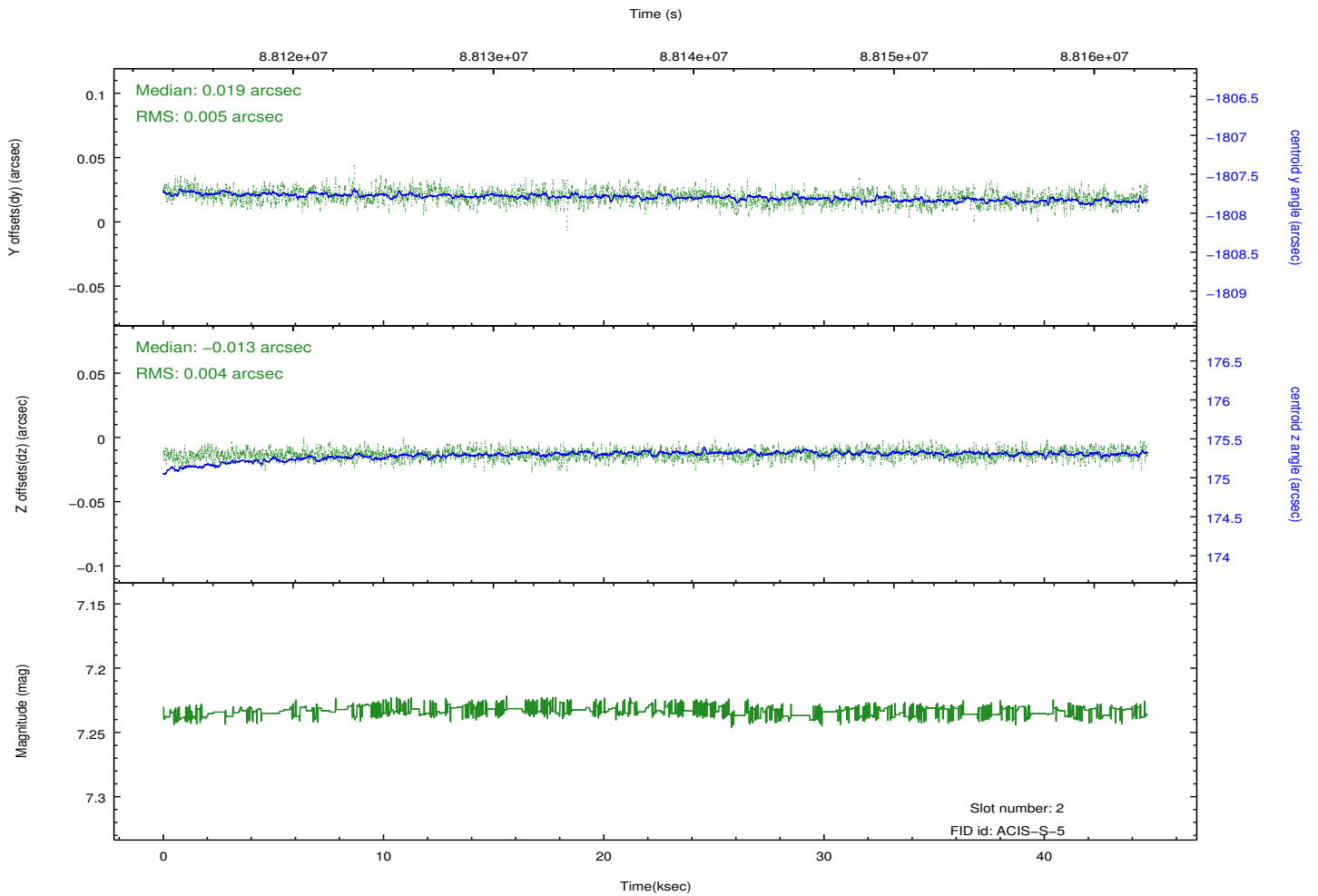
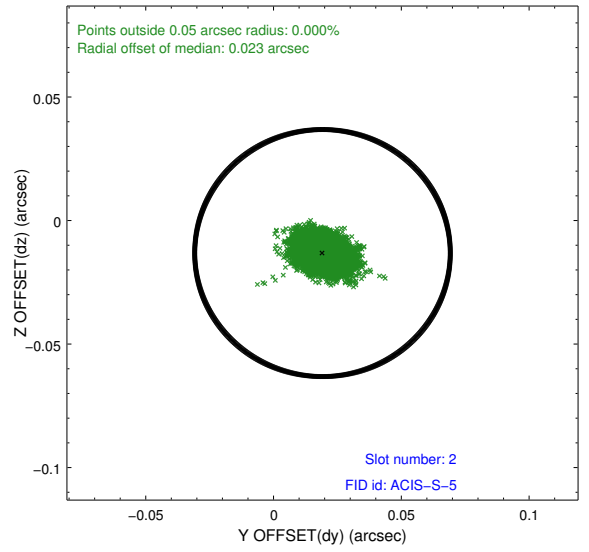
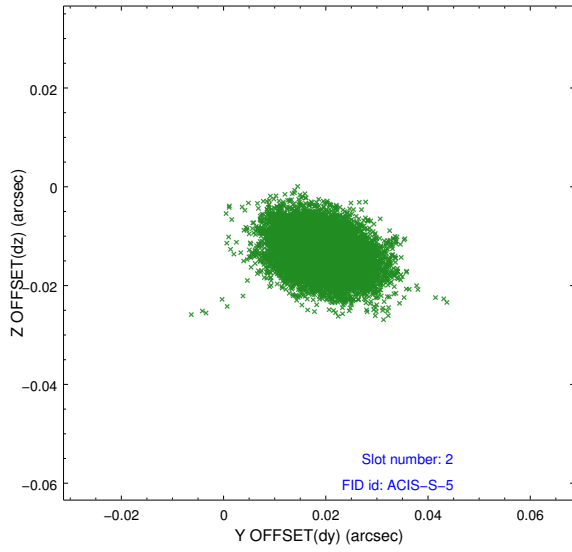
2.5.1 Slot 0



2.5.2 Slot 1



2.5.3 Slot 2



A Summary

A.1 Status

V&V Scientist	Joy Nichols
V&V Date (YYYY-MM-DD)	2012.10.11
V&V Edition	1
V&V Disposition and Status	OK
V&V Charge Time	43.83

A.2 Comments

Charge time for this ObsId remains at previous value of 43.83 ks, although with the current processing the charge time would be 43.906 ks.

===

Spike in count rate from about 10 counts per second to about 40 counts per second between 20 and 25 ksec into the observation. Some of this time period is included in the good time interval, and therefore is in the Level 2 data products.