

V&V Reference Report

L2 ASCDS Version : 8.4.4

Observation 8907 - L2 Version 3
Chandra X-Ray Center

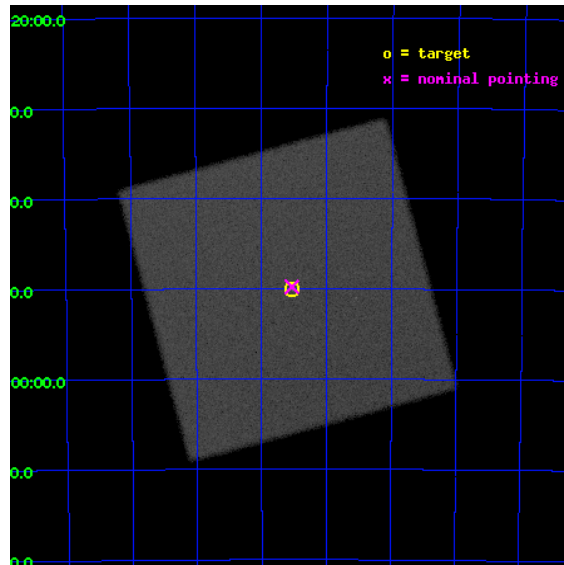
L2 Processing Date : Aug 12 2012

Contents

1	Front	2
2	OBI	3
2.1	OBI	3
2.1.1	Images	3
2.1.2	Parameters	4
2.1.3	Events	4
2.2	Compared Parameters	5
2.3	Aspect	6
2.4	Star Slots	9
2.4.1	Slot 3	9
2.4.2	Slot 4	10
2.4.3	Slot 5	11
2.4.4	Slot 6	12
2.4.5	Slot 7	13
2.5	FID Slots	14
2.5.1	Slot 0	14
2.5.2	Slot 1	15
2.5.3	Slot 2	16
A	Summary	17
A.1	Status	17
A.2	Comments	17

1 Front

seq_num	200488	Sequence number
obs_id	8907	Observation id
title	The Further Fainting of Alpha Cen A	Proposal title
observer	Dr. Thomas Ayres	Principal investigator
object	Alpha Centauri	Source name
ra_targ	219.884583	Observer's specified target RA [deg]
dec_targ	-60.833889	Observer's specified target Dec [deg]
ra_nom	219.88333135702	Nominal RA [deg]
dec_nom	-60.829891659124	Nominal Dec [deg]
roll_nom	119.94864253008	Nominal Roll [deg]
revision	3	Processing version of data
ontime	9961.2067430615	[s]
livetime	9336.9492983877	Ontime multiplied by DTCOR
l2events	670276	Number of level 2 events

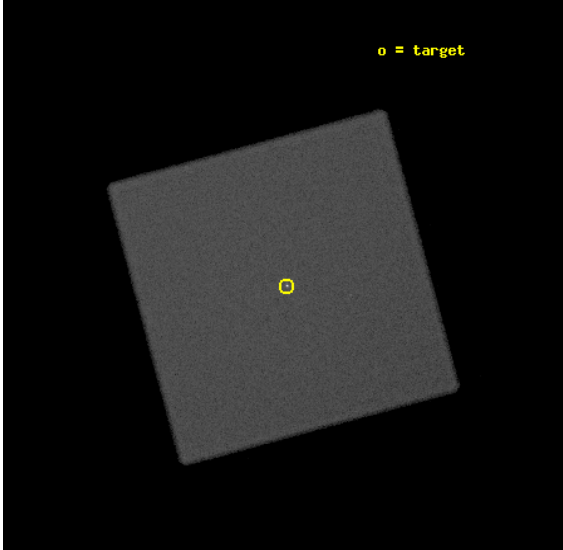


2 OBI

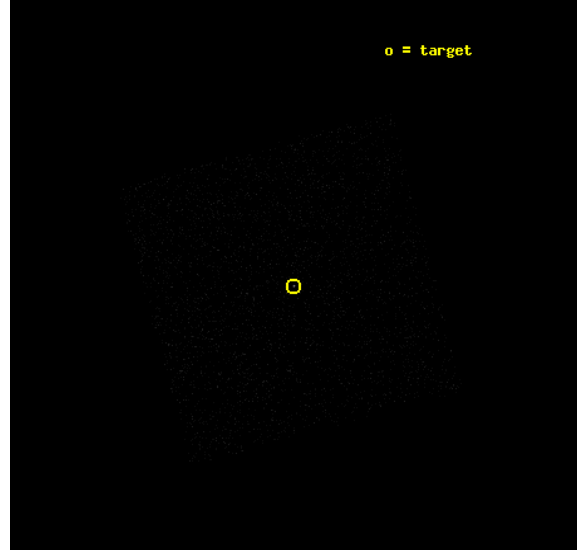
2.1 OBI

2.1.1 Images

Level 1 Image



Level 1 Bad Events



2.1.2 Parameters

obi_num	0	Obi number	sched_exp_time	10000.000000	[s] Scheduled observation exposure time
ascdsver	8.4.5	Processing system revision	ontime	9961.2067430615	[s]
caldbver	4.5.1.1	 	l1events	1004163	Number of level 1 events
date	2012-08-12T23:33:55	Date and time of file creation			
revision	3	Processing version of data			

2.1.3 Events

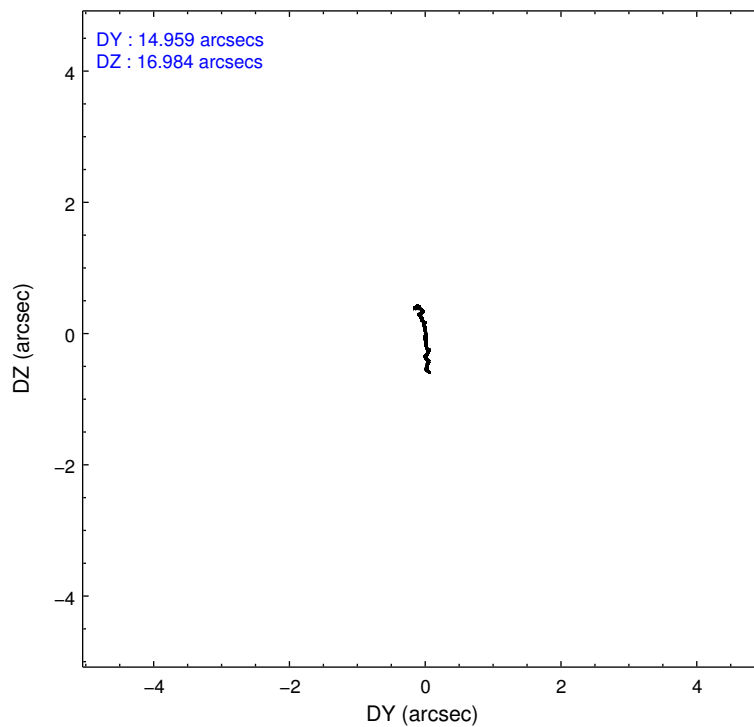
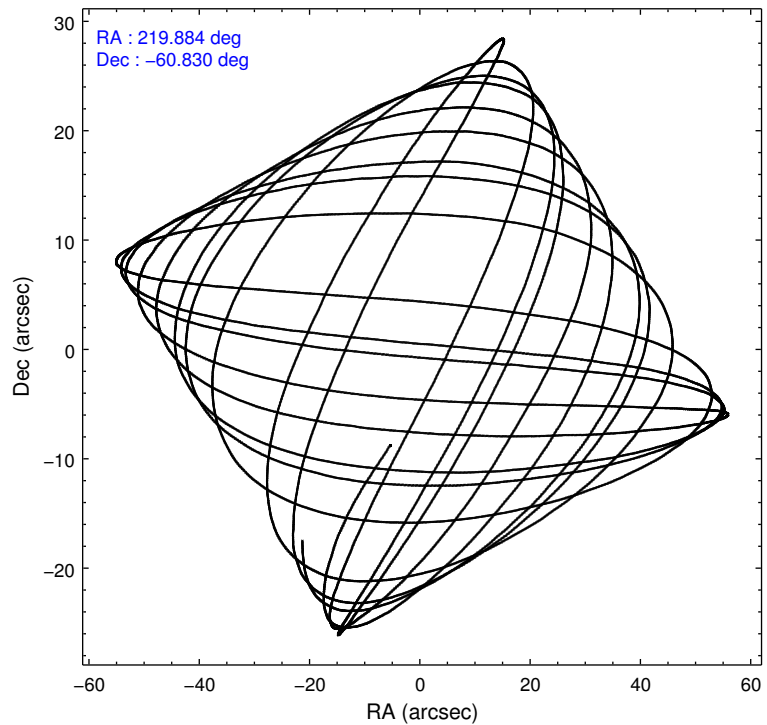
Level 1 Events

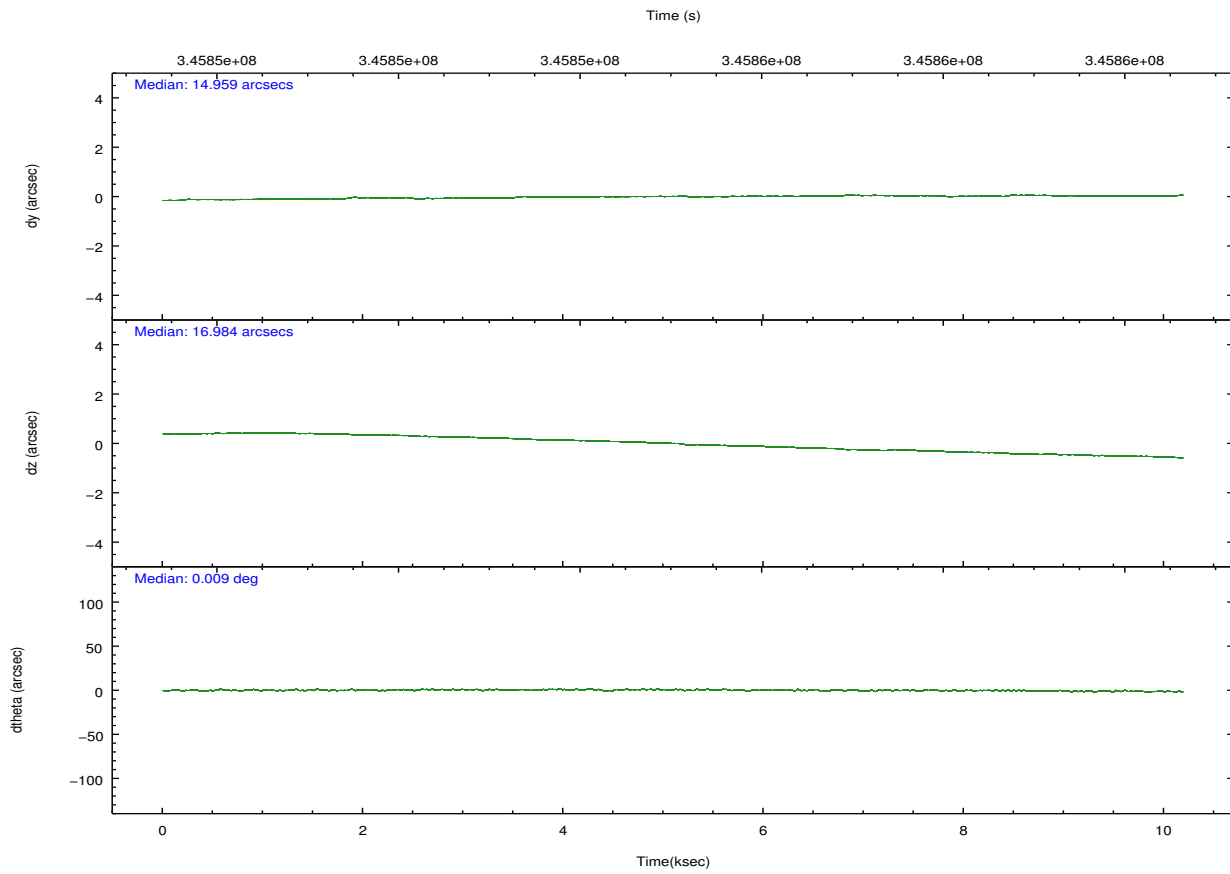
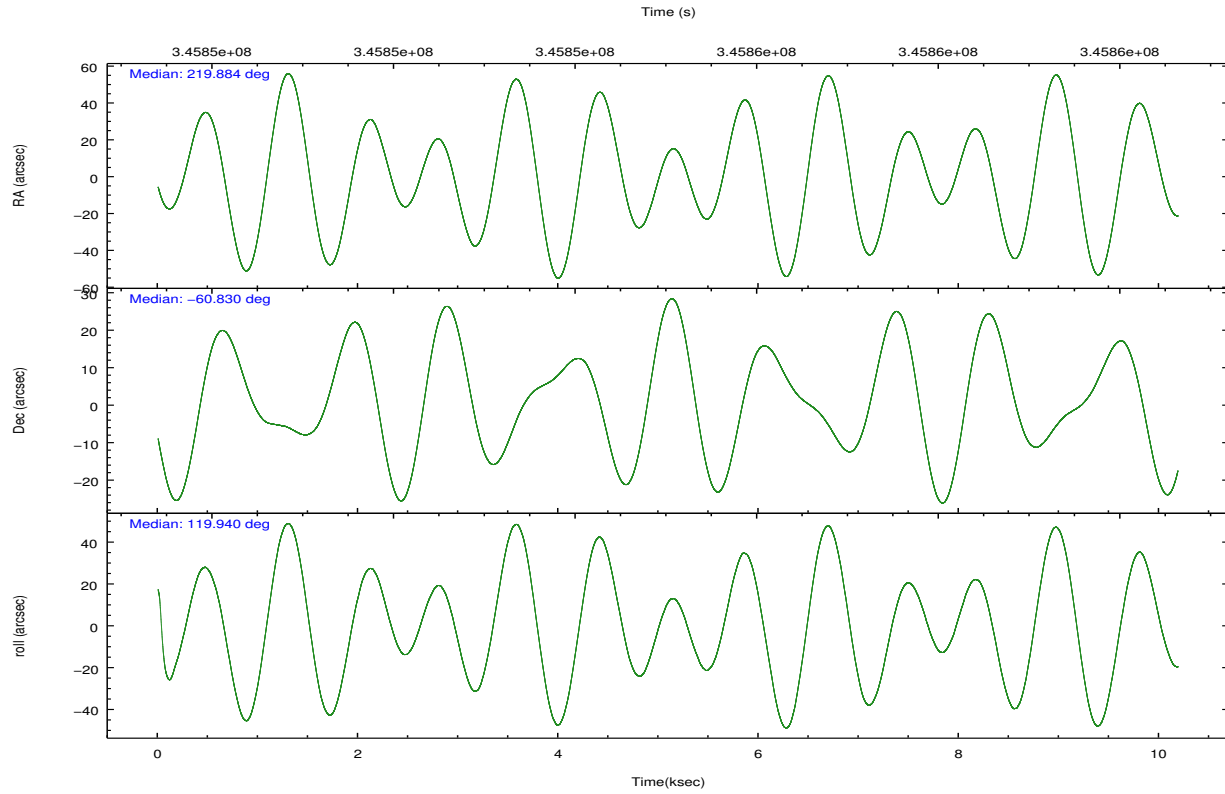
	segment 0
level 1 events	1004163
rejected events	21421
rejected %	2%

2.2 Compared Parameters

Parameter	Planned	Actual	Parameter	Planned	Actual
Instrument	HRC	HRC	Obspar format version number	7	7
Detector	HRC-I	HRC-I	Obspar file type	PREDICTED	ACTUAL
Grating	NONE	NONE	Obspar update status	NONE	UPDATED
Data mode	OBSERVING	OBSERVING			
Observation mode	POINTING	POINTING			
[deg] Pointing RA	219.932287	219.8833313570154			
[deg] Pointing Dec	-60.842777	-60.8298916591236			
[deg] Pointing Roll	120.086892	119.9486425300828			
[s] Window start time (MET)	344476865.184000	344476865.184000			
[s] Window stop time (MET)	347155266.184000	347155266.184000			
[mm] SIM focus pos	-1.040293	-1.038866356238299			
[mm] SIM defocus	0	0.001426264420575141			
[mm] SIM translation stage pos	126.985494	126.9829799899862			
[mm] SIM translation stage offset	0	0.002508901615314585			
[s] Observation start time (MET)	345850113.184000	345849617.40813			
Observation start date	2008-12-16T21:27:28	2008-12-16T21:20:17			
[s] Observation end time (MET)	345860113.184000	345860410.65866			
Observation end date	2008-12-17T00:14:08	2008-12-17T00:20:10			

2.3 Aspect



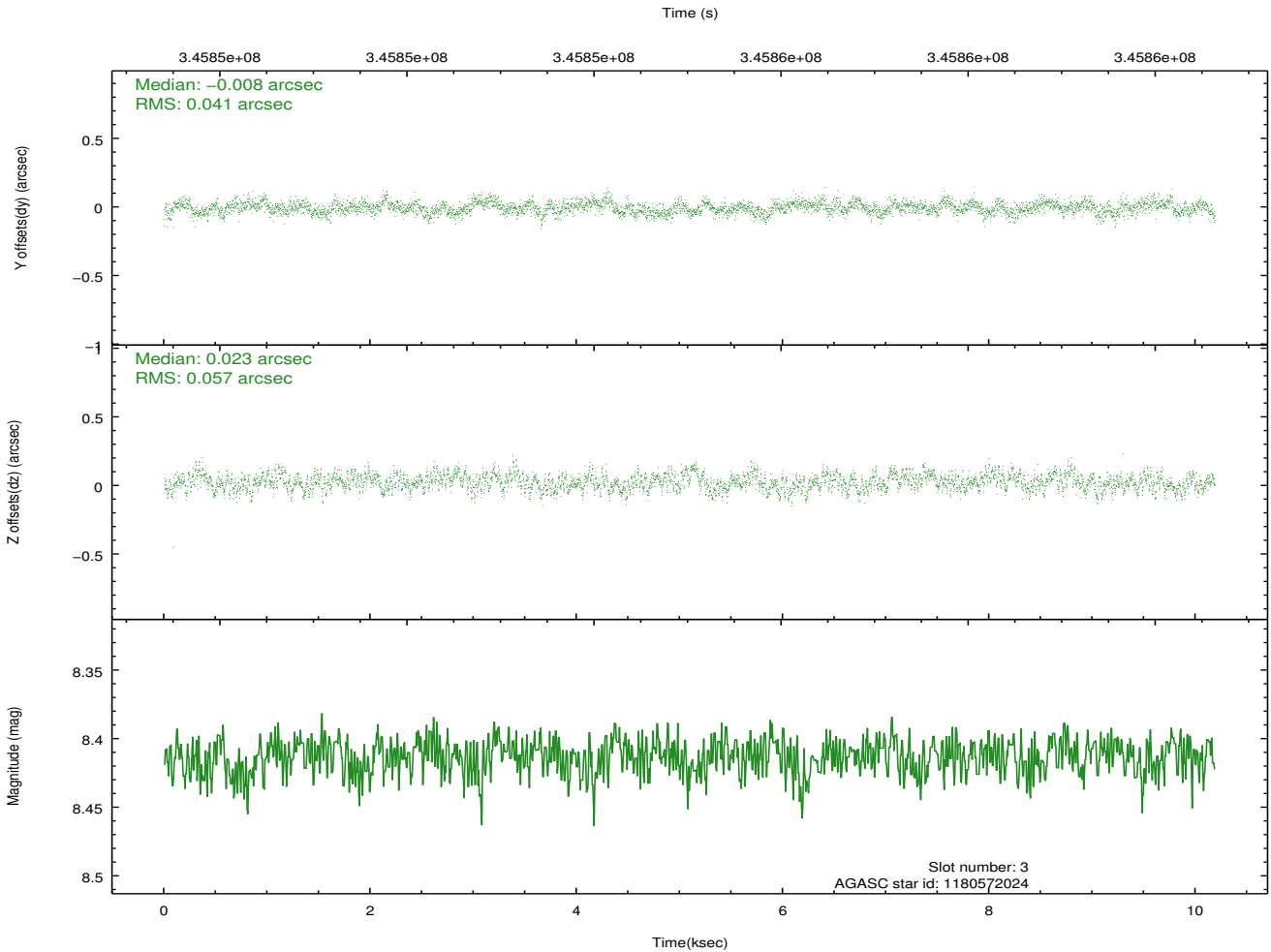
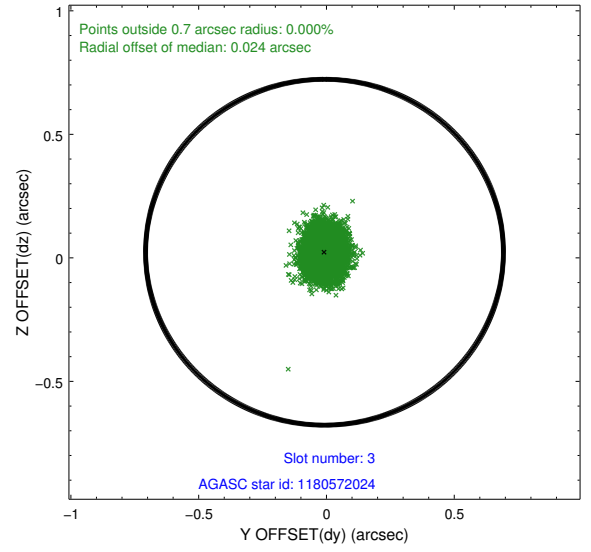
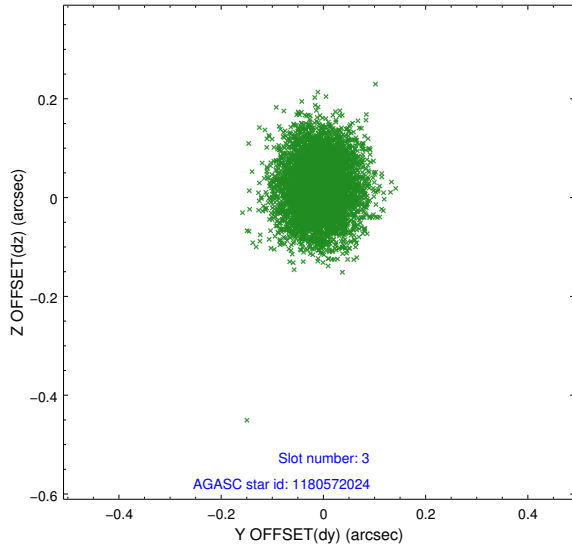


Slot Statistics

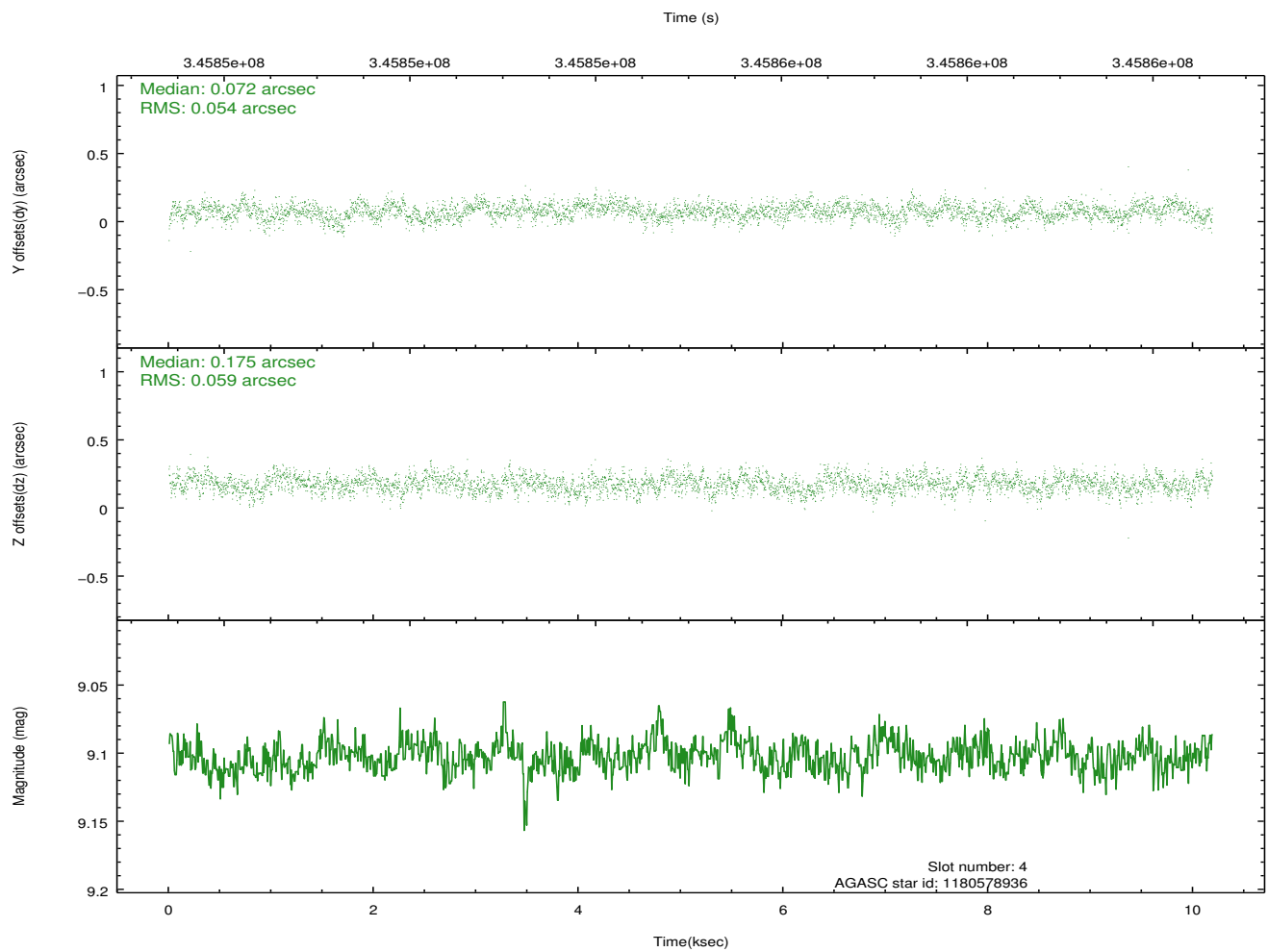
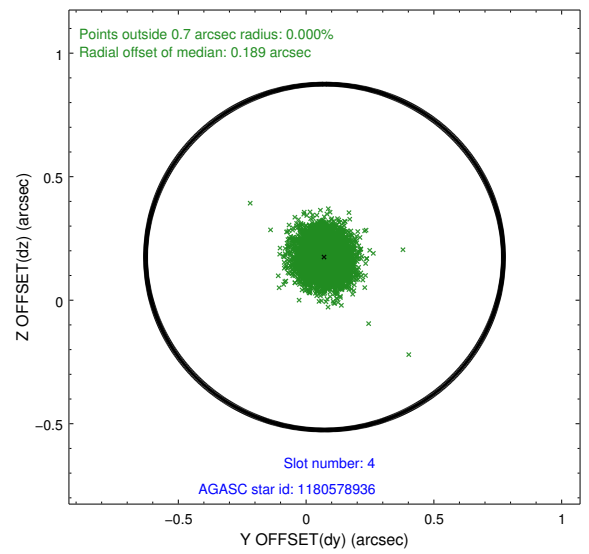
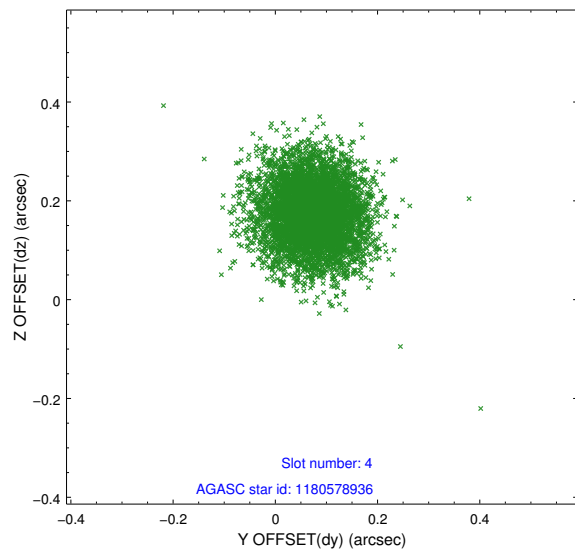
slot	status	id	mag	n_pts	med_dy	med_dz	dr1	dr2	ra	dec	mean_y	mean_z
0	FID	HRC-I-1	7.06	2484	-0.083	-0.006	0.011	0.018	0.000000	0.000000	-770.82	-1305.11
1	FID	HRC-I-2	7.11	2485	0.292	-0.184	0.016	0.027	0.000000	0.000000	841.88	-1307.37
2	FID	HRC-I-3	7.16	2485	-0.091	0.100	0.014	0.022	0.000000	0.000000	-1198.97	999.04
3	GUIDE	1180572024	8.41	4970	-0.008	0.023	0.074	0.120	220.930377	-60.981487	-1316.23	-1251.06
4	GUIDE	1180578936	9.10	4967	0.072	0.175	0.085	0.138	220.919358	-61.155393	-1843.49	-912.76
5	GUIDE	1180579504	9.59	4927	-0.032	-0.072	0.119	0.202	219.500103	-61.658654	-2173.21	2112.51
6	GUIDE	1180589152	9.28	4958	0.065	-0.179	0.097	0.168	219.760705	-61.382926	-1534.27	1231.30
7	GUIDE	1180612104	8.98	4967	-0.099	0.053	0.088	0.147	220.502279	-60.631704	149.92	-1248.89

2.4 Star Slots

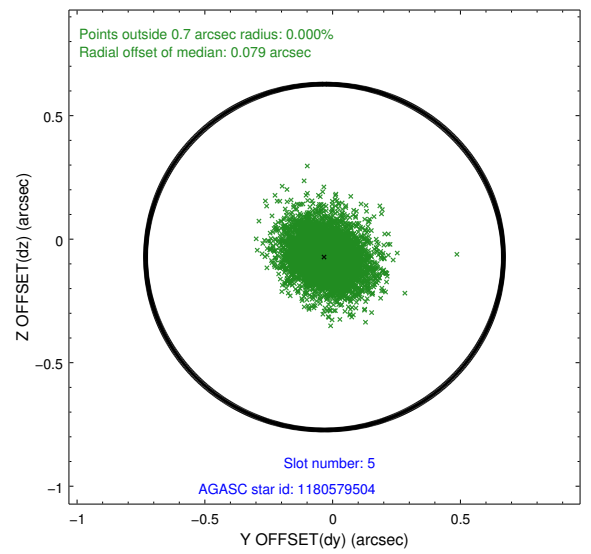
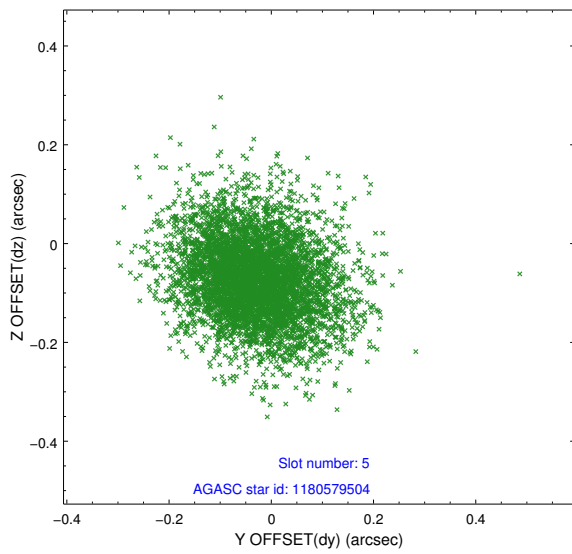
2.4.1 Slot 3



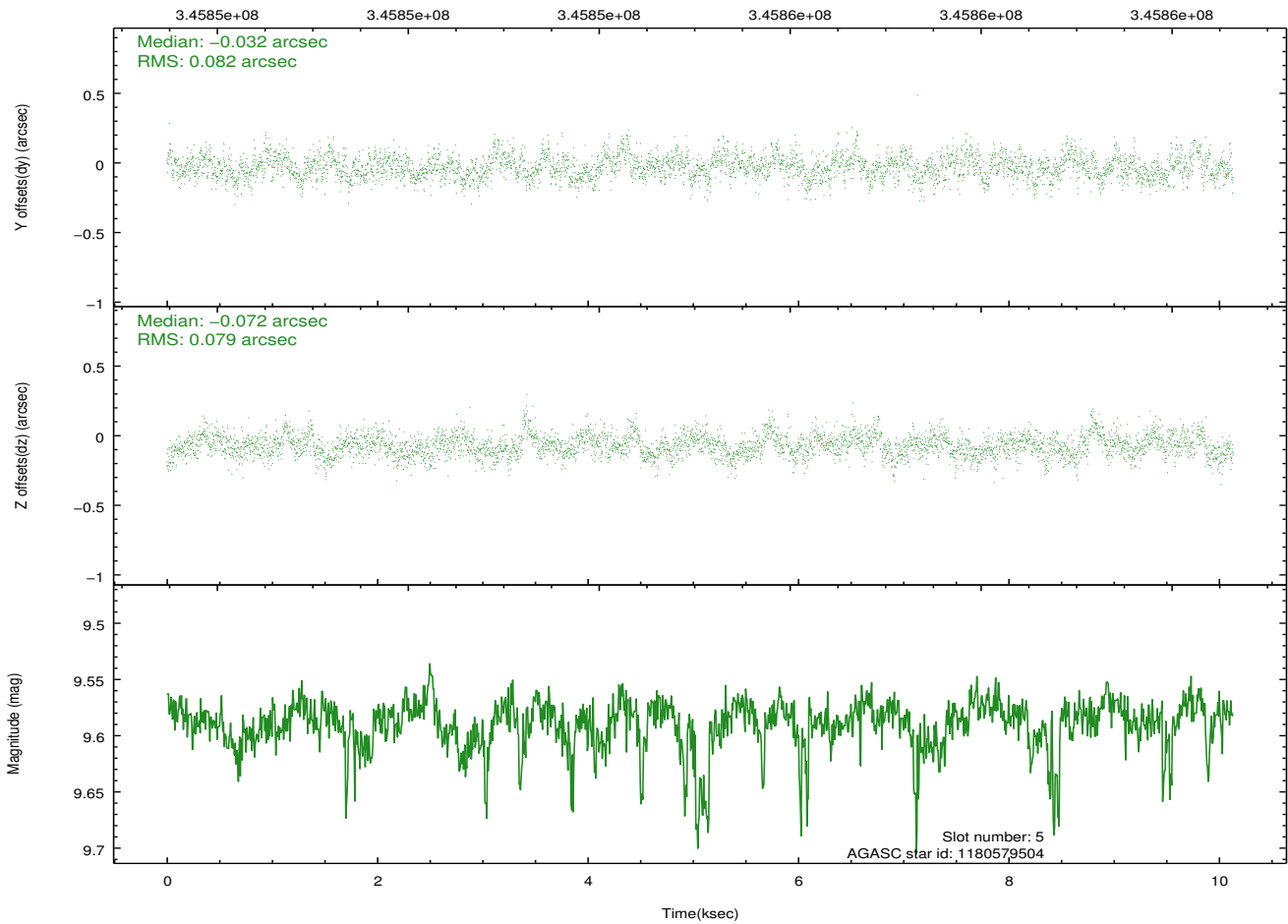
2.4.2 Slot 4



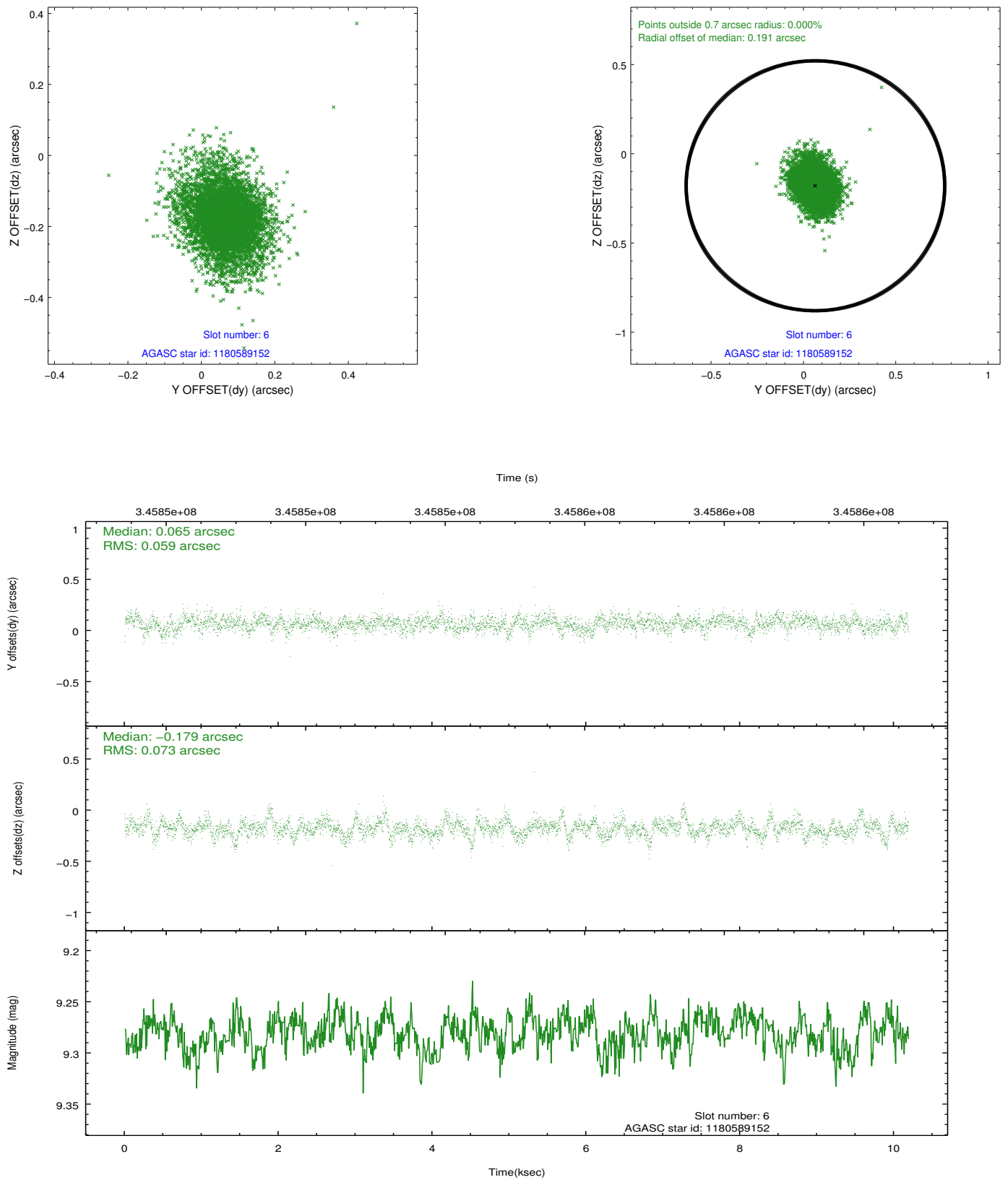
2.4.3 Slot 5



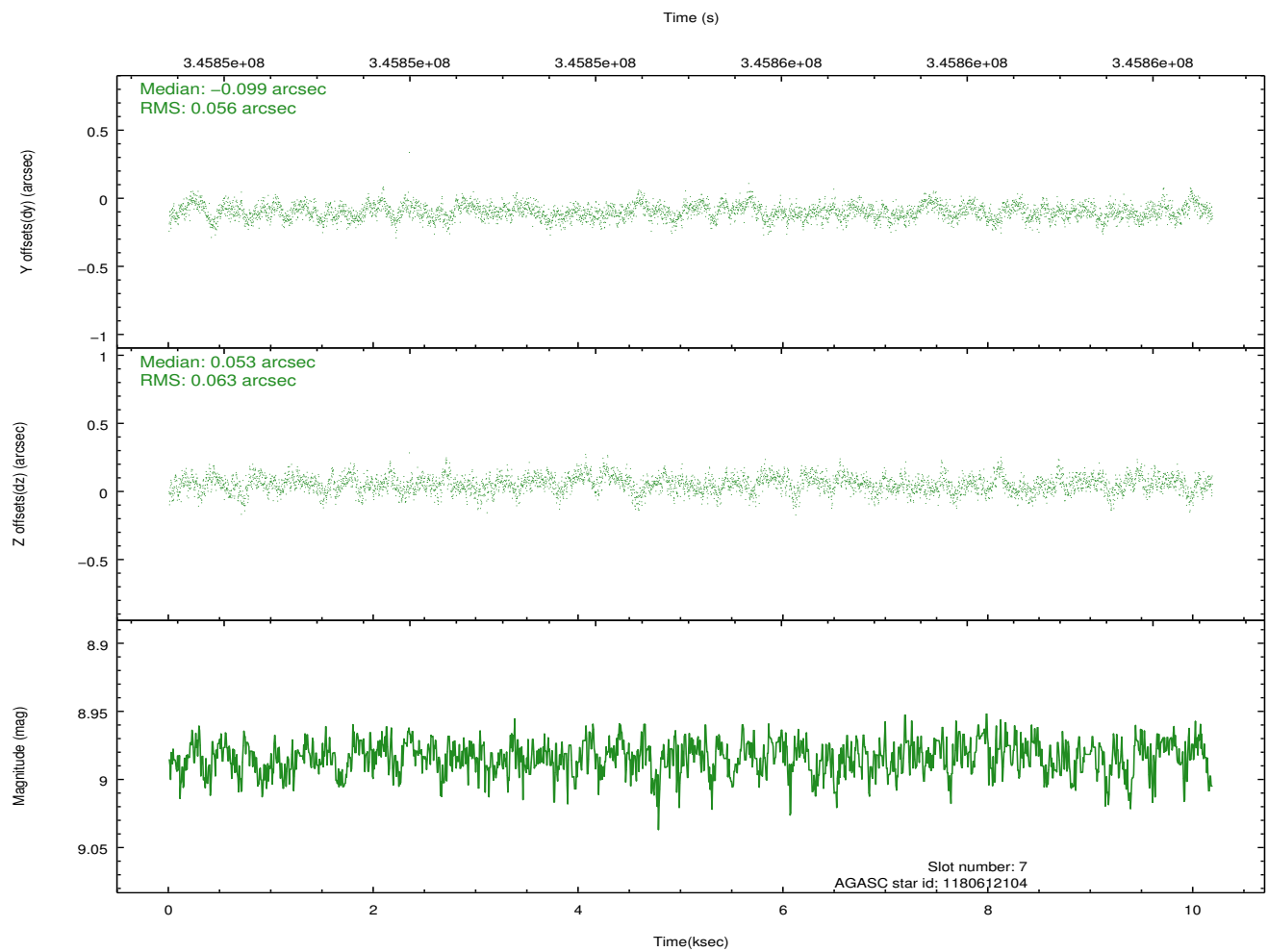
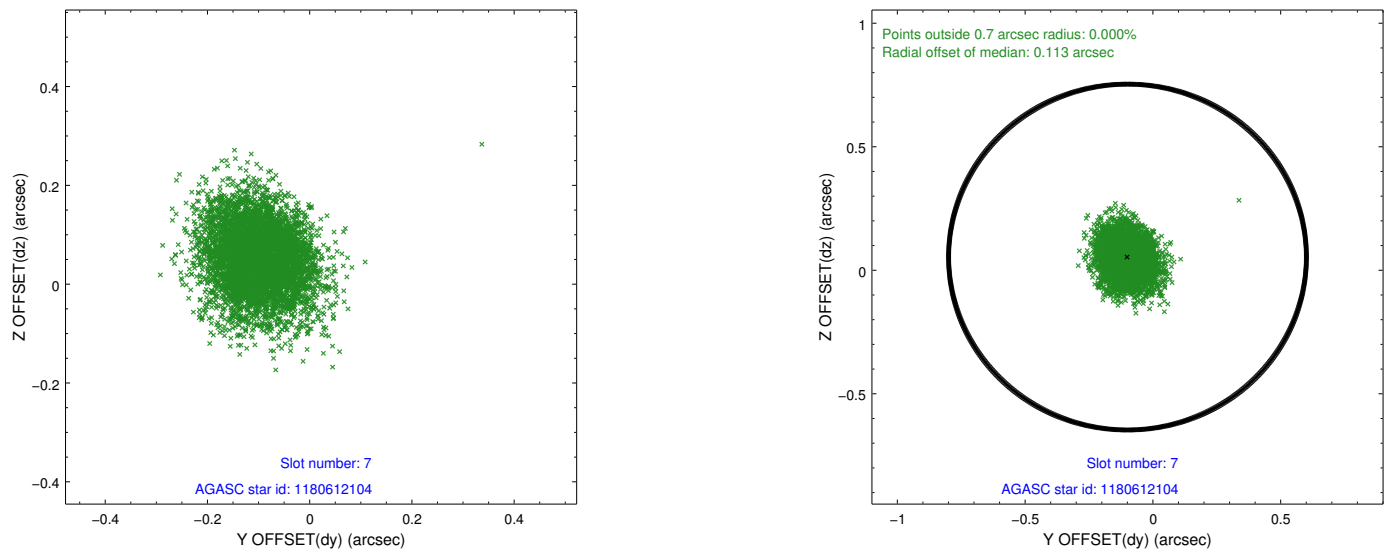
Time (s)



2.4.4 Slot 6

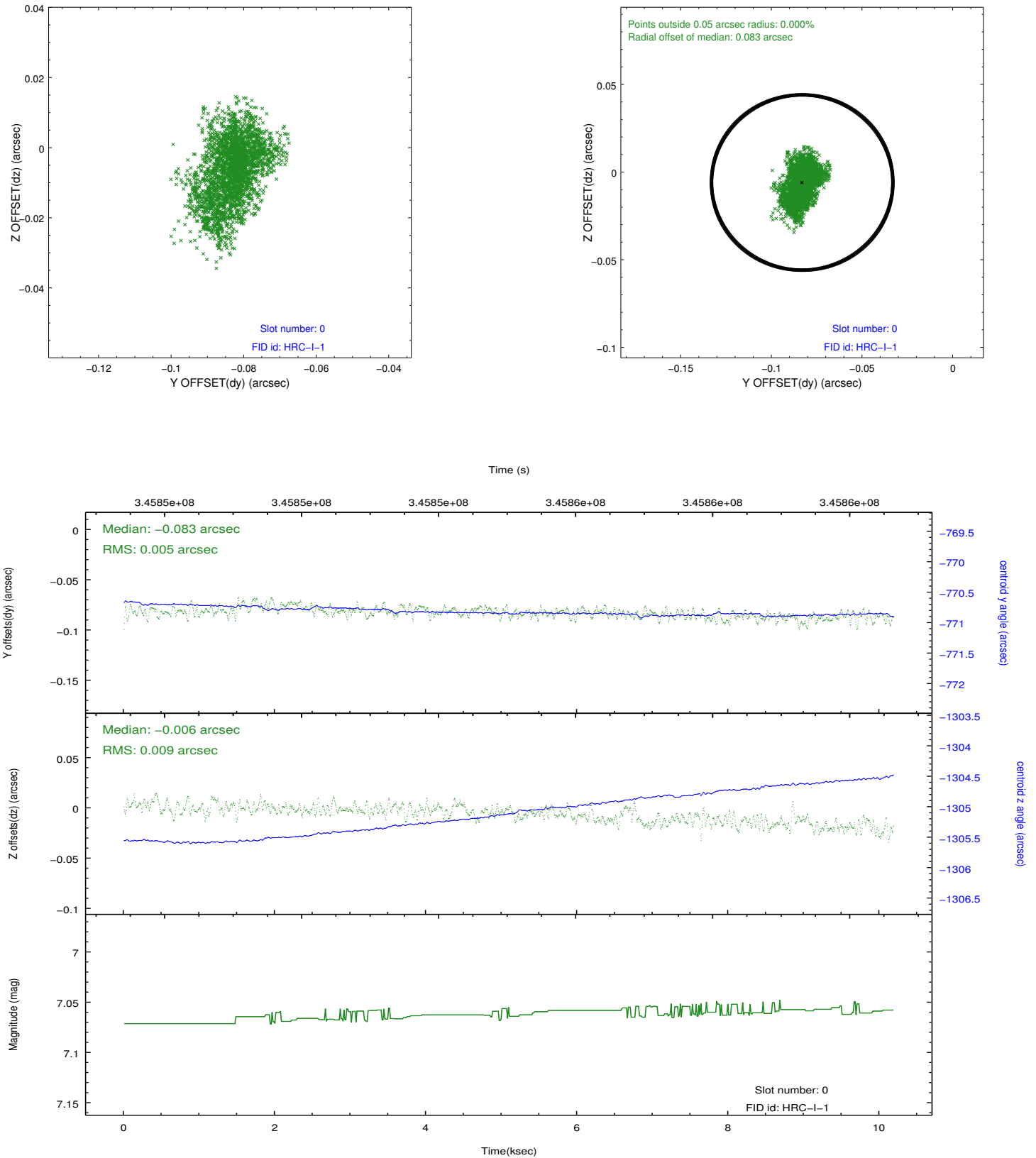


2.4.5 Slot 7

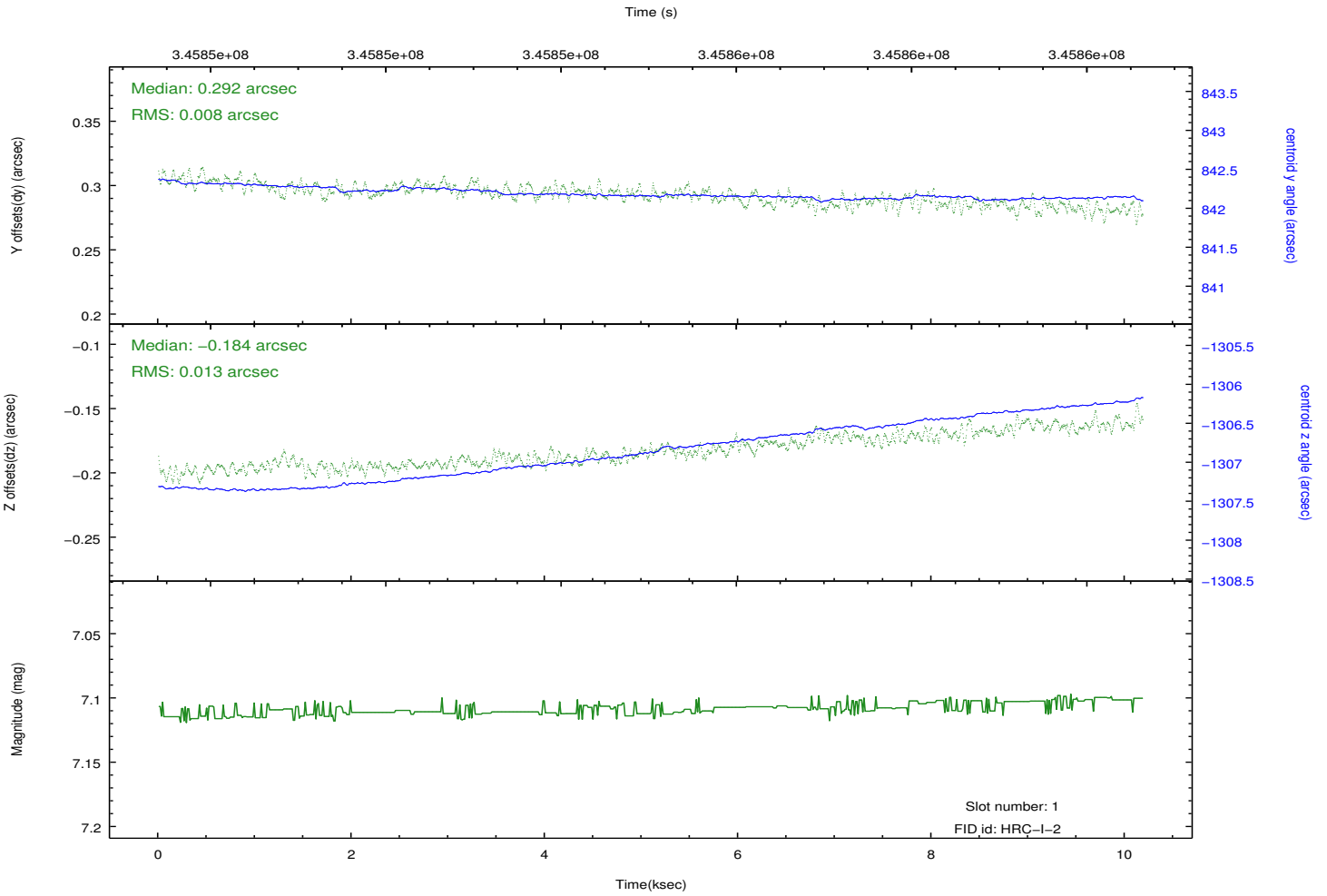
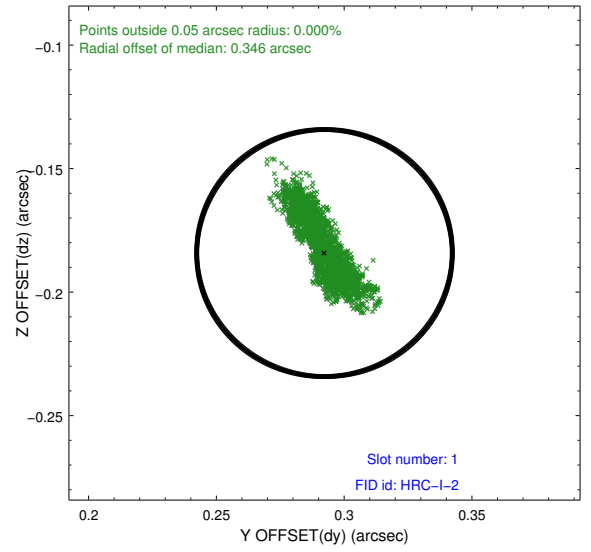
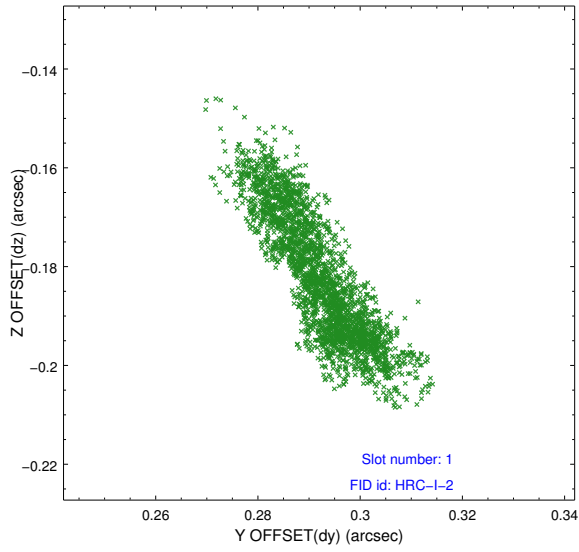


2.5 FID Slots

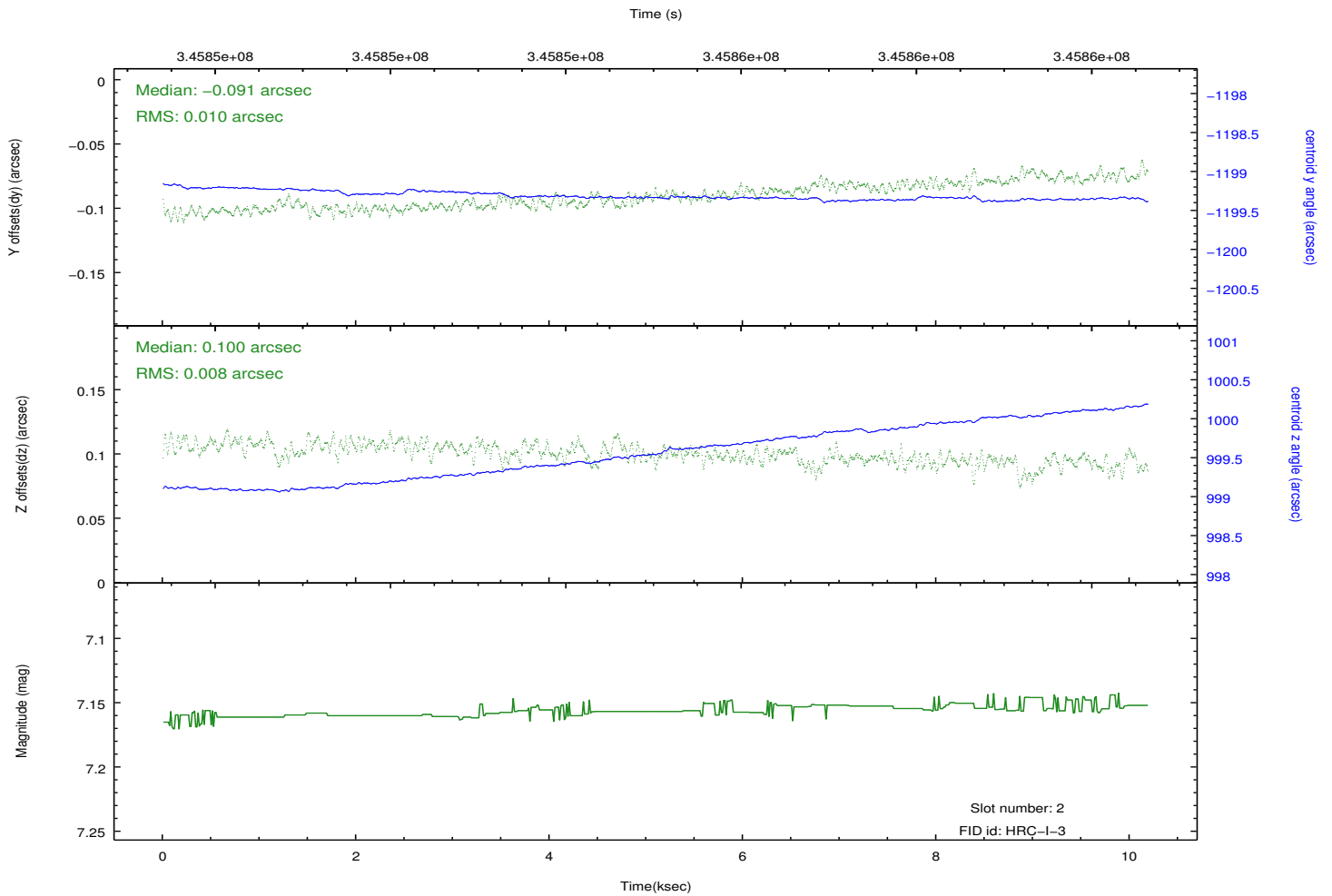
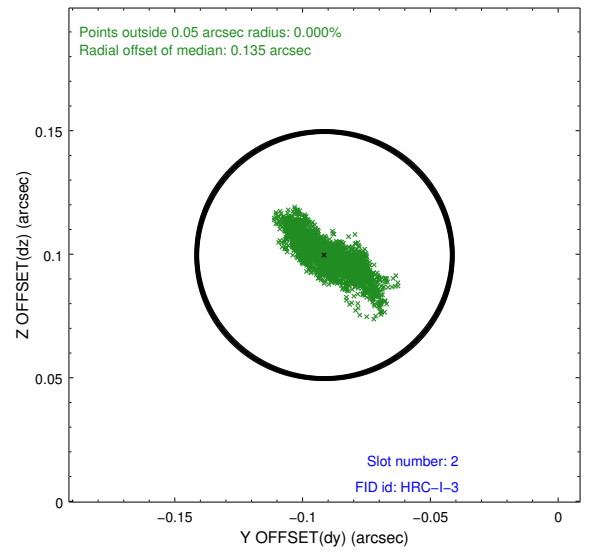
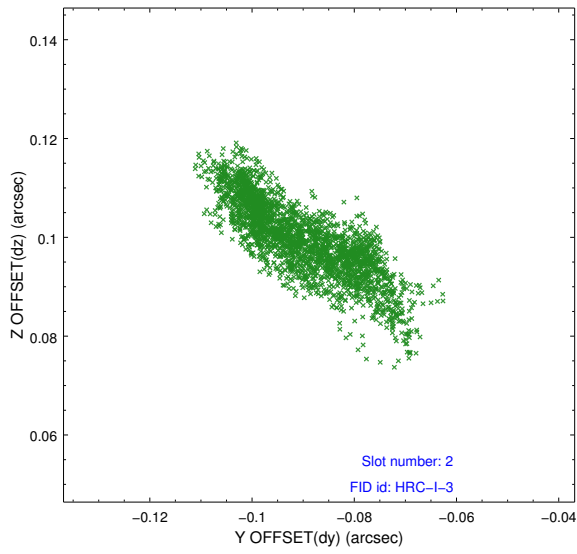
2.5.1 Slot 0



2.5.2 Slot 1



2.5.3 Slot 2



A Summary

A.1 Status

V&V Scientist	Jen Lauer
V&V Date (YYYY-MM-DD)	2012.08.20
V&V Edition	1
V&V Disposition and Status	OK
V&V Charge Time	9.96120674

A.2 Comments

Window constraint met.