

# V&V Reference Report

## L2 ASCDS Version : 8.4.4

Observation 9237 - L2 Version 2  
Chandra X-Ray Center

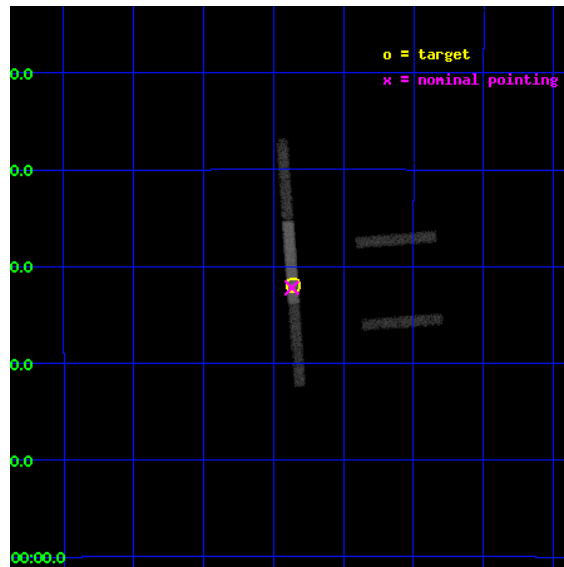
L2 Processing Date : May 13 2012

## Contents

<b>1</b>	<b>Front</b>	<b>2</b>
<b>2</b>	<b>OBI</b>	<b>3</b>
2.1	OBI . . . . .	3
2.1.1	Images . . . . .	3
2.1.2	Bias . . . . .	3
2.1.3	Parameters . . . . .	4
2.1.4	Events . . . . .	4
2.2	Compared Parameters . . . . .	5
2.3	Aspect . . . . .	6
2.4	Star Slots . . . . .	9
2.4.1	Slot 3 . . . . .	9
2.4.2	Slot 4 . . . . .	10
2.4.3	Slot 5 . . . . .	11
2.4.4	Slot 6 . . . . .	12
2.4.5	Slot 7 . . . . .	13
2.5	FID Slots . . . . .	14
2.5.1	Slot 0 . . . . .	14
2.5.2	Slot 1 . . . . .	15
2.5.3	Slot 2 . . . . .	16
<b>A</b>	<b>Summary</b>	<b>17</b>
A.1	Status . . . . .	17
A.2	Comments . . . . .	17

# 1 Front

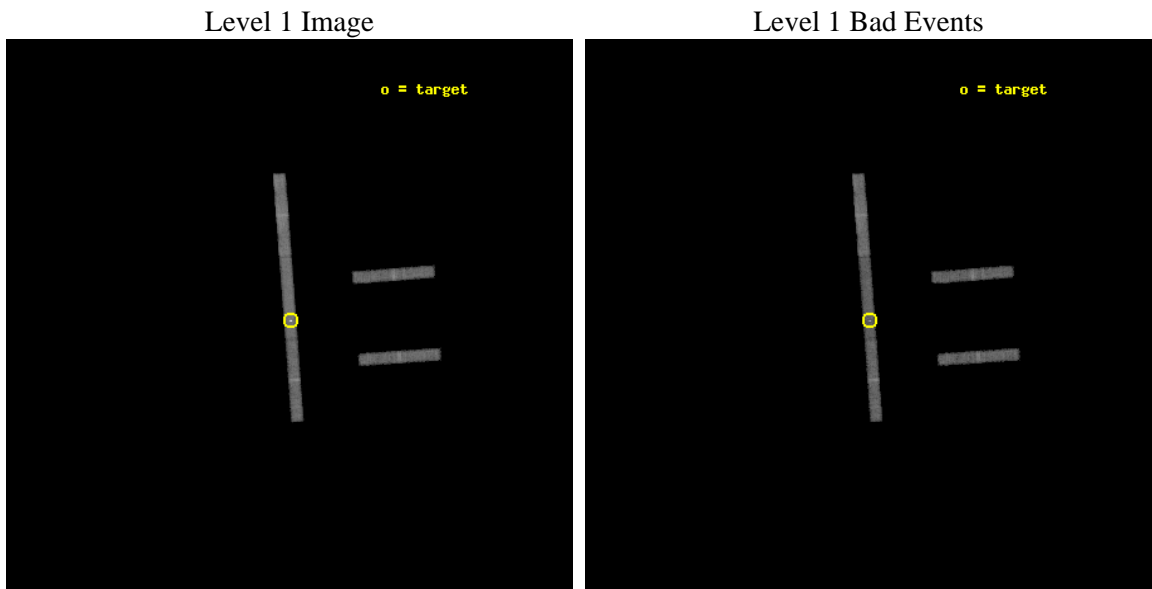
seq_num	701678	Sequence number
obs_id	9237	Observation id
title	Dissecting Accretion Disks	Proposal title
observer	Prof. Christopher Kochanek	Principal investigator
object	RXJ1131-1231	Source name
dtcycle	0	&#160
cycle	P	events from which exps? Prim/Second/Both
ra_targ	172.965	Observer's specified target RA [deg]
dec_targ	-12.5325	Observer's specified target Dec [deg]
ra_nom	172.96726255762	Nominal RA [deg]
dec_nom	-12.536815099706	Nominal Dec [deg]
roll_nom	265.75061149437	Nominal Roll [deg]
revision	2	Processing version of data
ontime	15145.899742007	Sum of GTIs [s]
livetime	14307.09518974	Livetime [s]
ontime2	15145.899742007	Sum of GTIs [s]
ontime3	15145.899742007	Sum of GTIs [s]
ontime6	15145.899742007	Sum of GTIs [s]
ontime7	15145.899742007	Sum of GTIs [s]
ontime8	15144.417592287	Sum of GTIs [s]
l2events	33078	Number of level 2 events



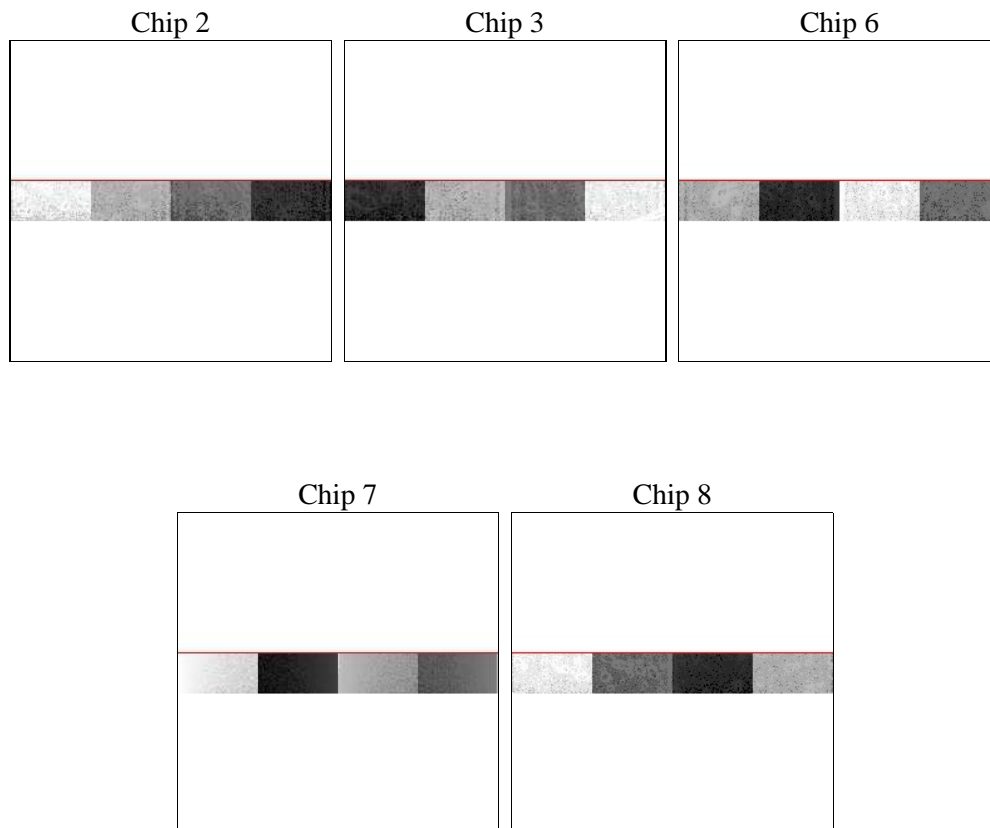
## 2 OBI

### 2.1 OBI

#### 2.1.1 Images



#### 2.1.2 Bias



### 2.1.3 Parameters

obi_num	0	Obi number	sched_exp_time	14977.598000	[s] Scheduled observation exposure time
ascdsver	8.4.4	Processing system revision	ontime	15145.899742007	Sum of GTIs [s]
caldbver	4.4.9	&#160	ontime2	15145.899742007	Sum of GTIs [s]
date	2012-05-13T12:29:41	Date and time of file creation	ontime3	15145.899742007	Sum of GTIs [s]
revision	2	Processing version of data	ontime6	15145.899742007	Sum of GTIs [s]
			ontime7	15145.899742007	Sum of GTIs [s]
			ontime8	15144.417592287	Sum of GTIs [s]
			l1events	155460	Number of level 1 events

### 2.1.4 Events

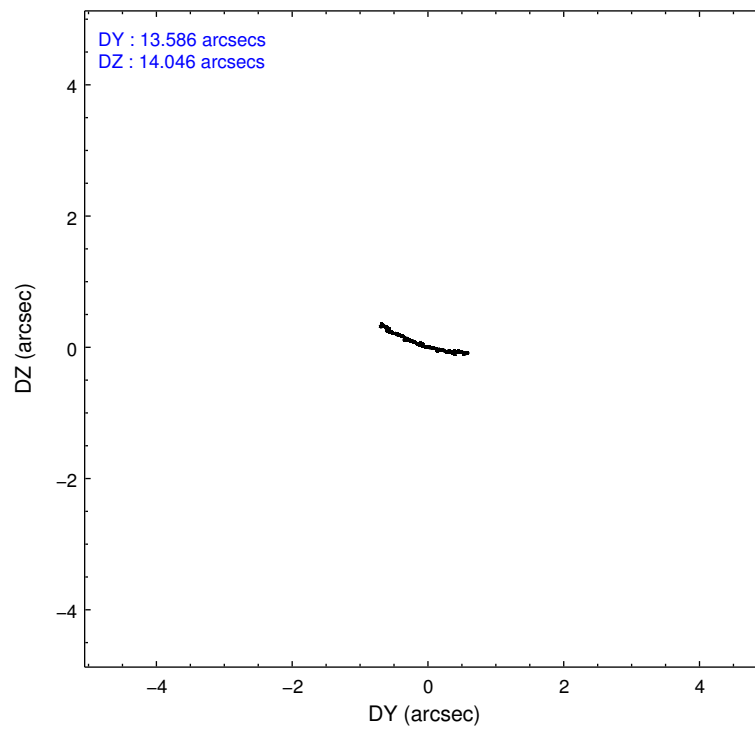
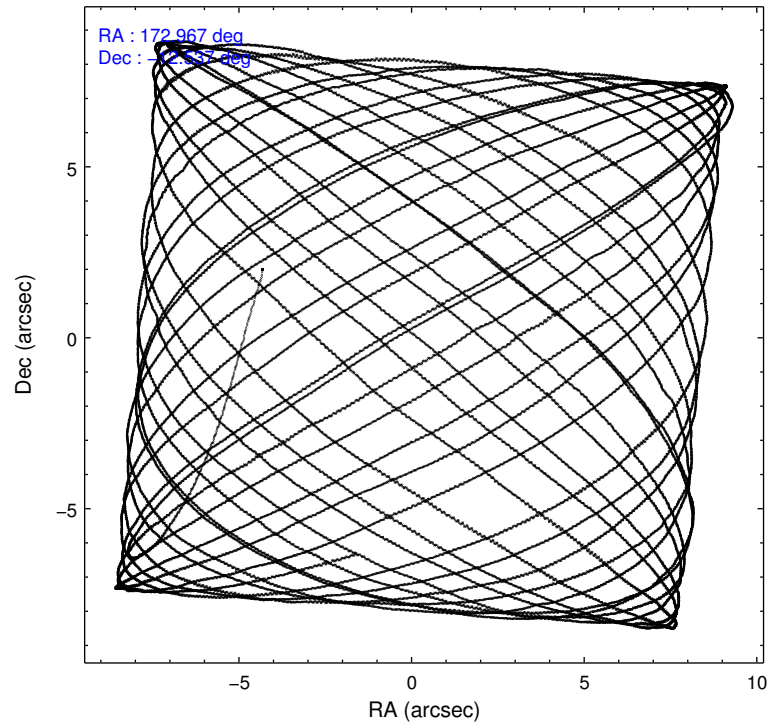
	ccd 2	ccd 3	ccd 6	ccd 7	ccd 8
level 1 events	23981	23965	25499	42866	39149
rejected events	21293	21227	22467	18837	32136
rejected %	88%	88%	88%	43%	82%

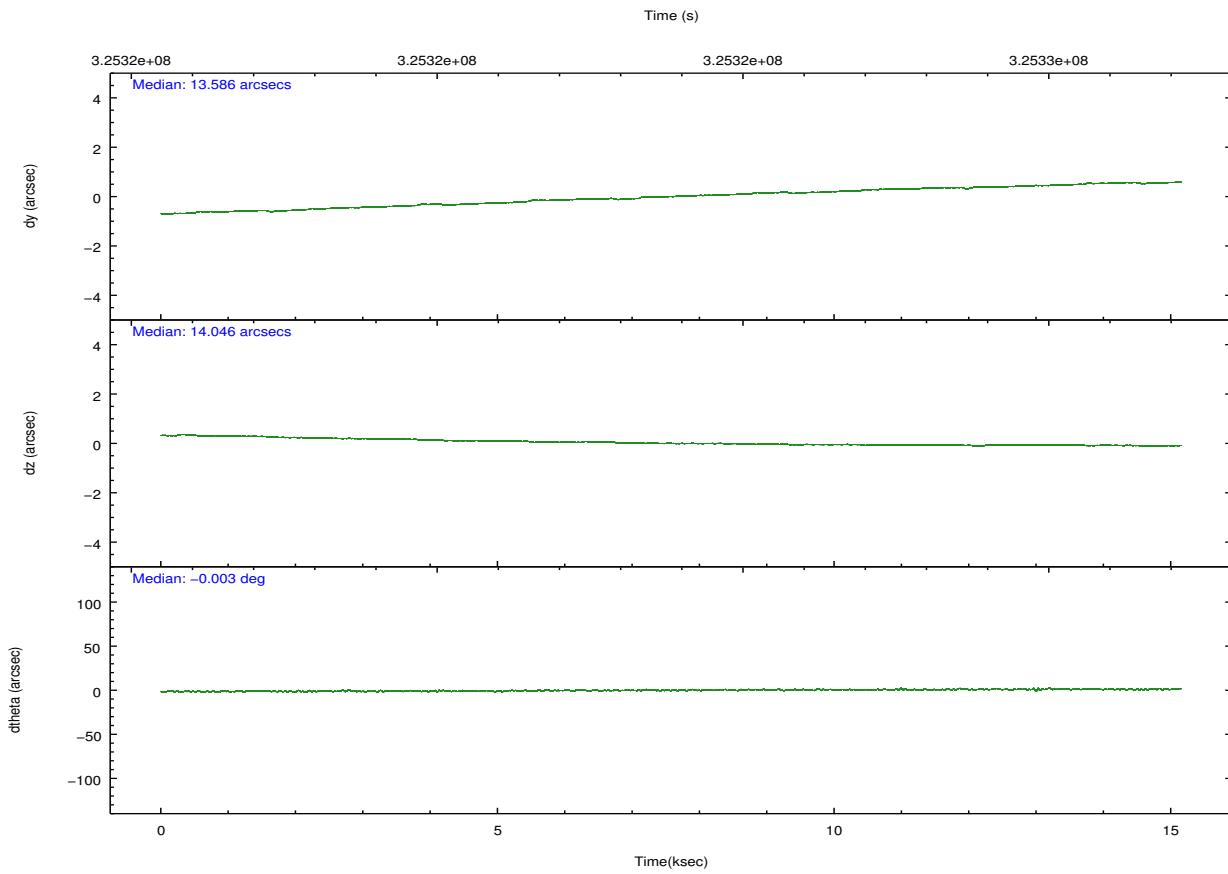
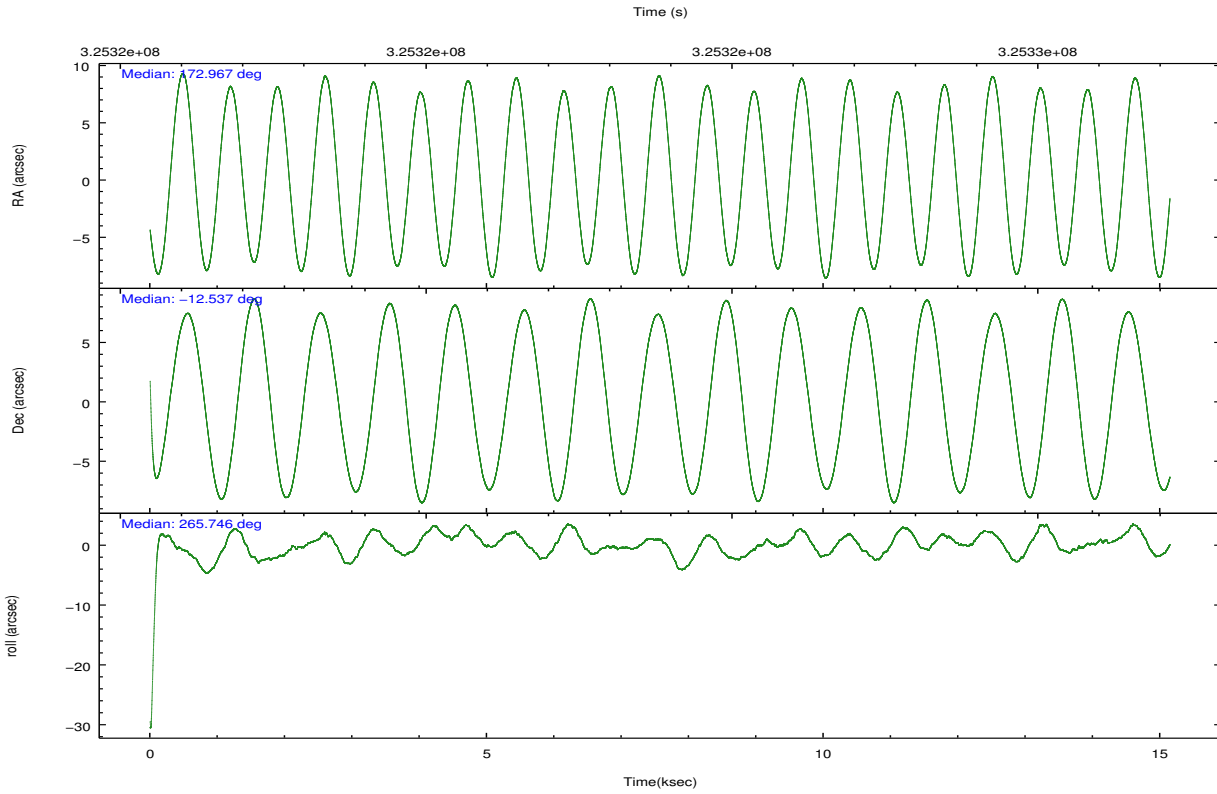
	ccd 2	ccd 3	ccd 6	ccd 7	ccd 8
grade 0 events	1134	1199	1177	4690	1974
	4%	5%	4%	10%	5%
grade 1 events	8	11	11	141	6
	0%	0%	0%	0%	0%
grade 2 events	492	471	583	5841	1681
	2%	1%	2%	13%	4%
grade 3 events	436	428	491	2840	755
	1%	1%	1%	6%	1%
grade 4 events	452	427	474	2795	696
	1%	1%	1%	6%	1%
grade 5 events	724	941	1002	3041	1373
	3%	3%	3%	7%	3%
grade 6 events	432	455	577	8993	2500
	1%	1%	2%	20%	6%
grade 7 events	20303	20033	21184	14525	30164
	84%	83%	83%	33%	77%

## 2.2 Compared Parameters

Parameter	Planned	Actual	Parameter	Planned	Actual
Instrument	ACIS	ACIS	Obspar format version number	7	7
Detector	ACIS-23678	ACIS-23678	Obspar file type	PREDICTED	ACTUAL
Grating	NONE	NONE	Obspar update status	NONE	UPDATED
Data mode	VFAINT	VFAINT	Number of optional ACIS chips dropped	0	0
Observation mode	POINTING	POINTING	On-chip summing requested	N	N
[deg] Pointing RA	172.954771	172.9672625576208	Subarray requested	CUSTOM	1/8
[deg] Pointing Dec	-12.512340	-12.5368150997059	Subarray start row	449	449
[deg] Pointing Roll	265.591308	265.7506114943718	Subarray row count	128	128
[mm] SIM focus pos	-0.684267	-0.6828225247311905	Alternating exposures requested	N	N
[mm] SIM defocus	0	0.001444936568705701	[s] Primary exposure time	0.000000	0.7
[mm] SIM translation stage pos	-190.132523	-190.1400660498719			
[mm] SIM translation stage offset	0	0.00754346686406393			
[s] Observation start time (MET)	325316430.184000	325315041.84053			
Observation start date	2008-04-23T05:39:25	2008-04-23T05:17:21			
[s] Observation end time (MET)	325331408.184000	325331628.39134			
Observation end date	2008-04-23T09:49:03	2008-04-23T09:53:48			
Read mode	TIMED	TIMED			

## 2.3 Aspect



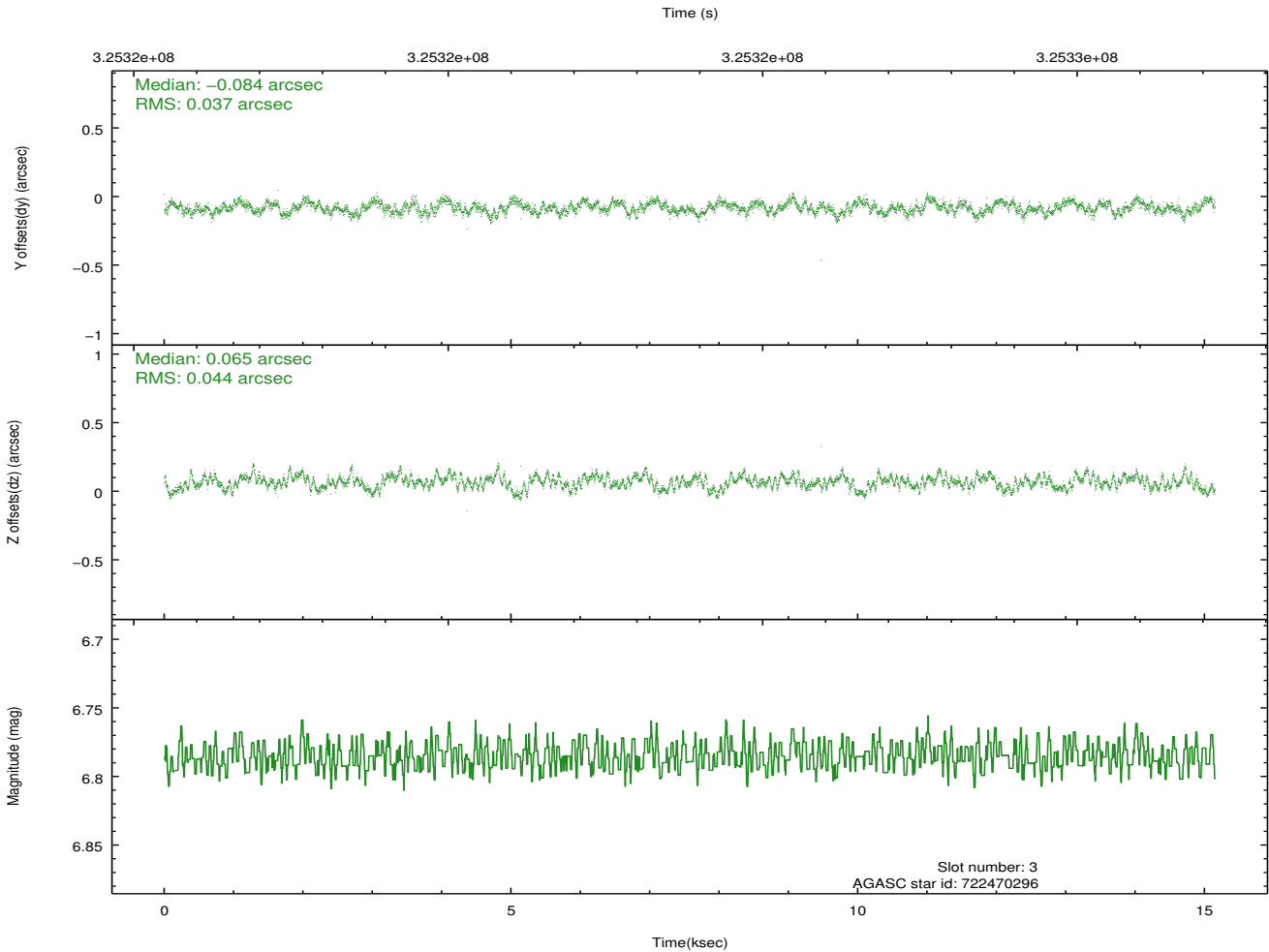
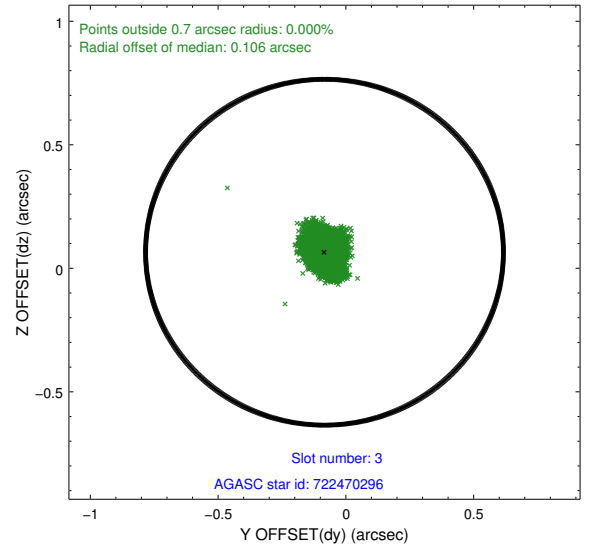
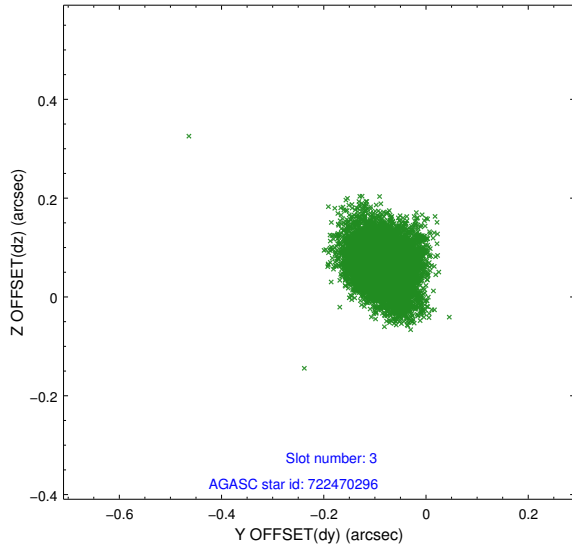


### Slot Statistics

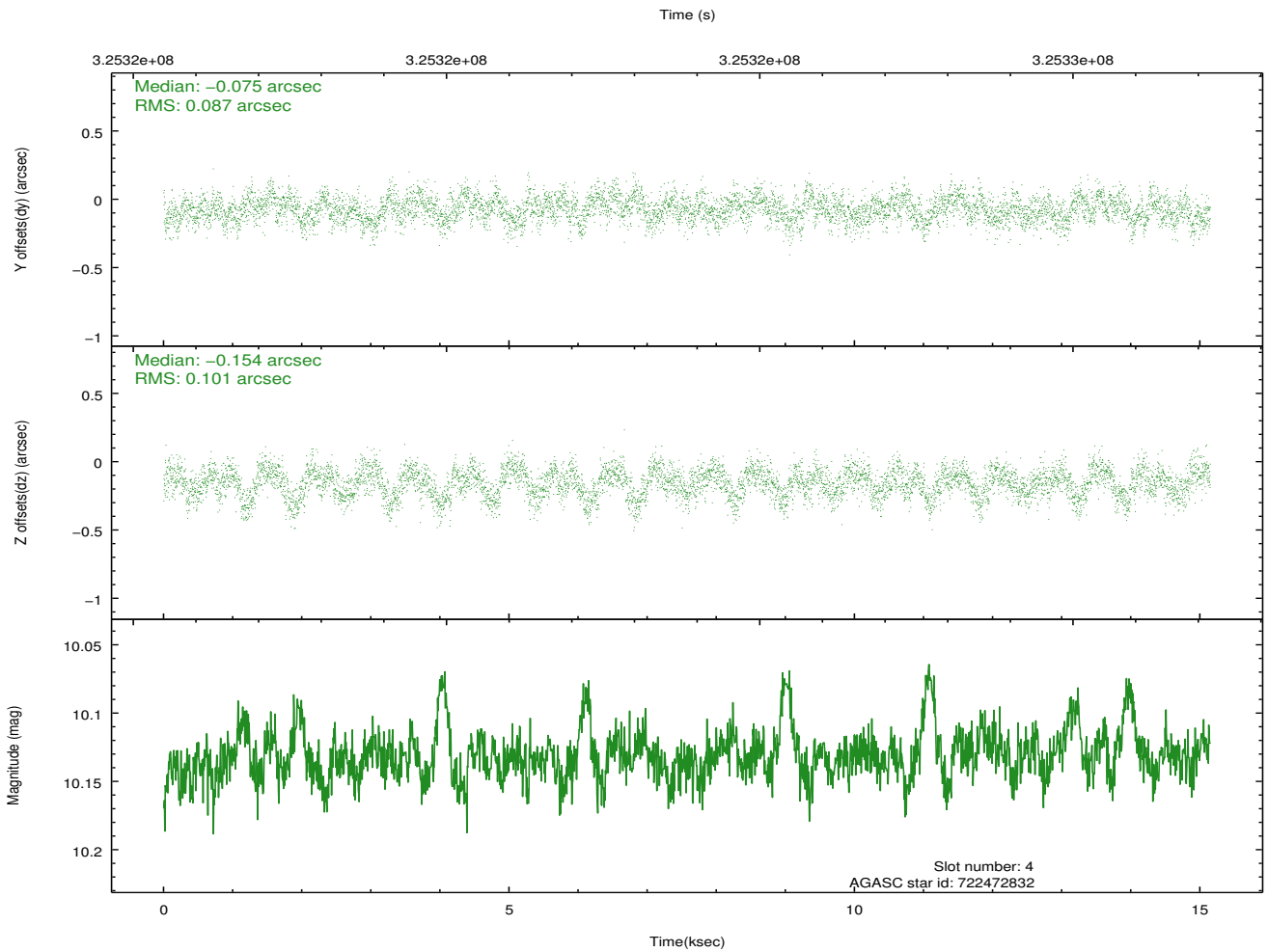
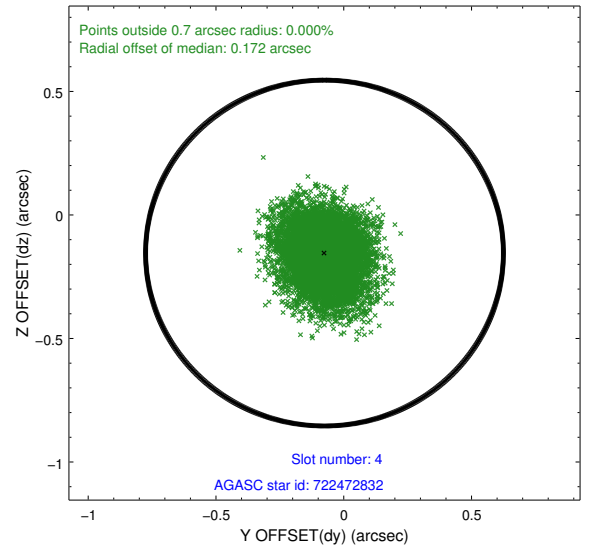
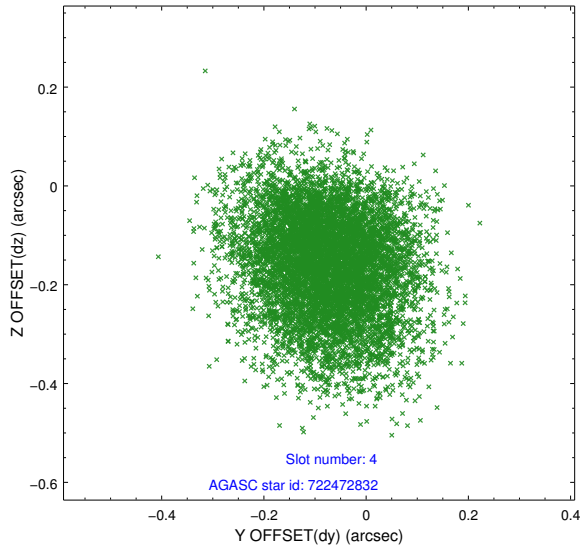
slot	status	id	mag	n_pts	med_dy	med_dz	dr1	dr2	ra	dec	mean_y	mean_z
0	FID	ACIS-S-1	6.92	3695	0.036	0.030	0.008	0.014	0.000000	0.000000	929.51	-1731.08
1	FID	ACIS-S-2	6.85	3693	-0.107	-0.050	0.011	0.018	0.000000	0.000000	-766.37	-1735.96
2	FID	ACIS-S-4	6.92	3694	0.045	0.027	0.011	0.019	0.000000	0.000000	2146.69	172.73
3	GUIDE	722470296	6.79	7390	-0.084	0.065	0.061	0.099	172.921689	-12.381367	-461.01	-152.16
4	GUIDE	722472832	10.13	7381	-0.075	-0.154	0.142	0.231	173.078970	-12.015349	-1817.25	298.45
5	GUIDE	722473176	9.48	7380	-0.035	0.091	0.103	0.165	172.599746	-12.066793	-1502.09	-1369.33
6	GUIDE	722871728	9.67	7380	0.125	0.030	0.114	0.184	173.202235	-12.568355	134.75	882.45
7	GUIDE	722873464	7.32	7388	0.068	-0.016	0.065	0.102	172.661543	-13.050266	2011.31	-875.67

## 2.4 Star Slots

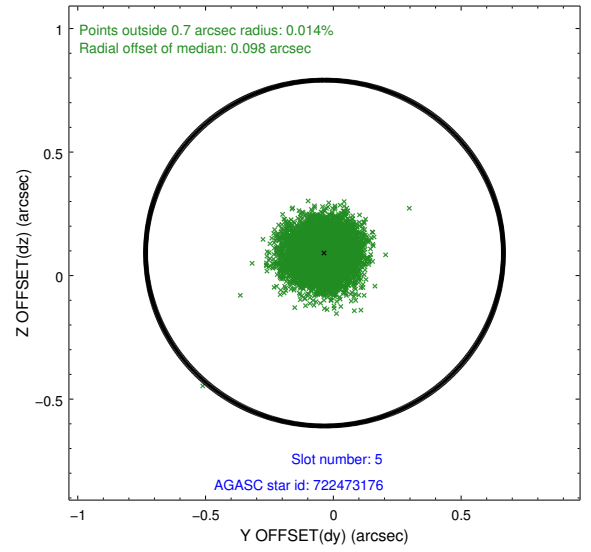
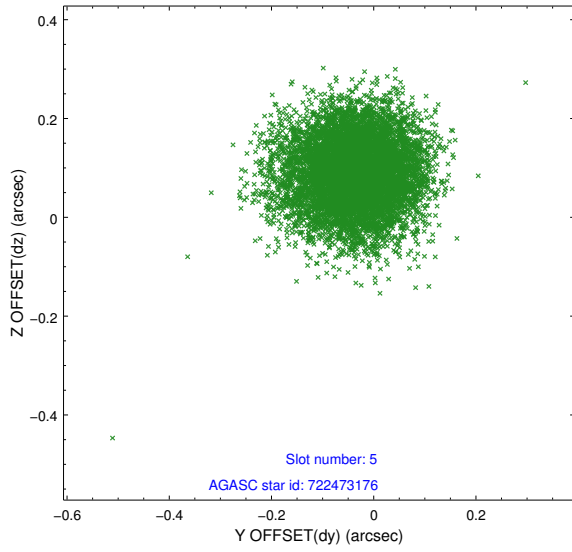
### 2.4.1 Slot 3



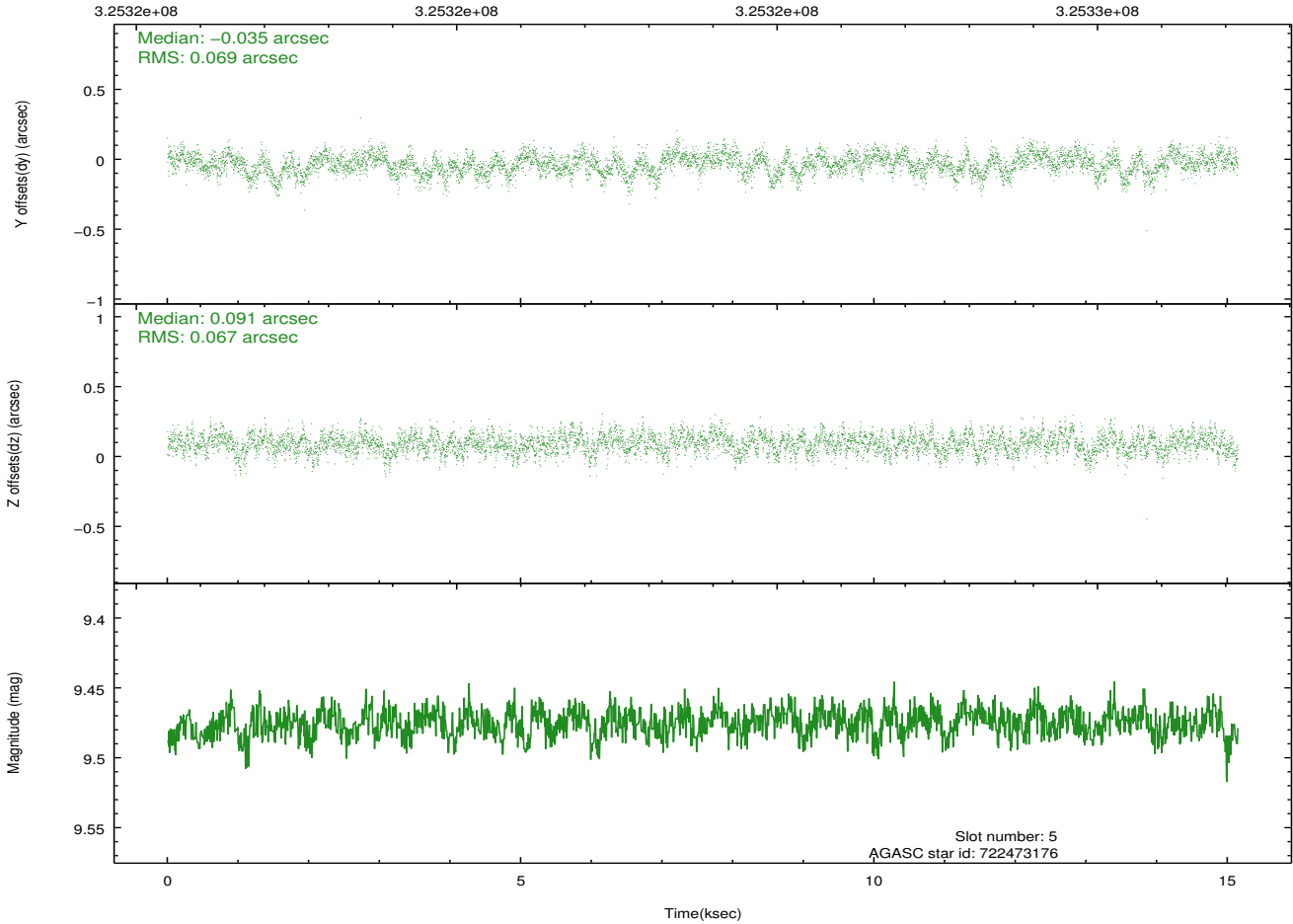
## 2.4.2 Slot 4



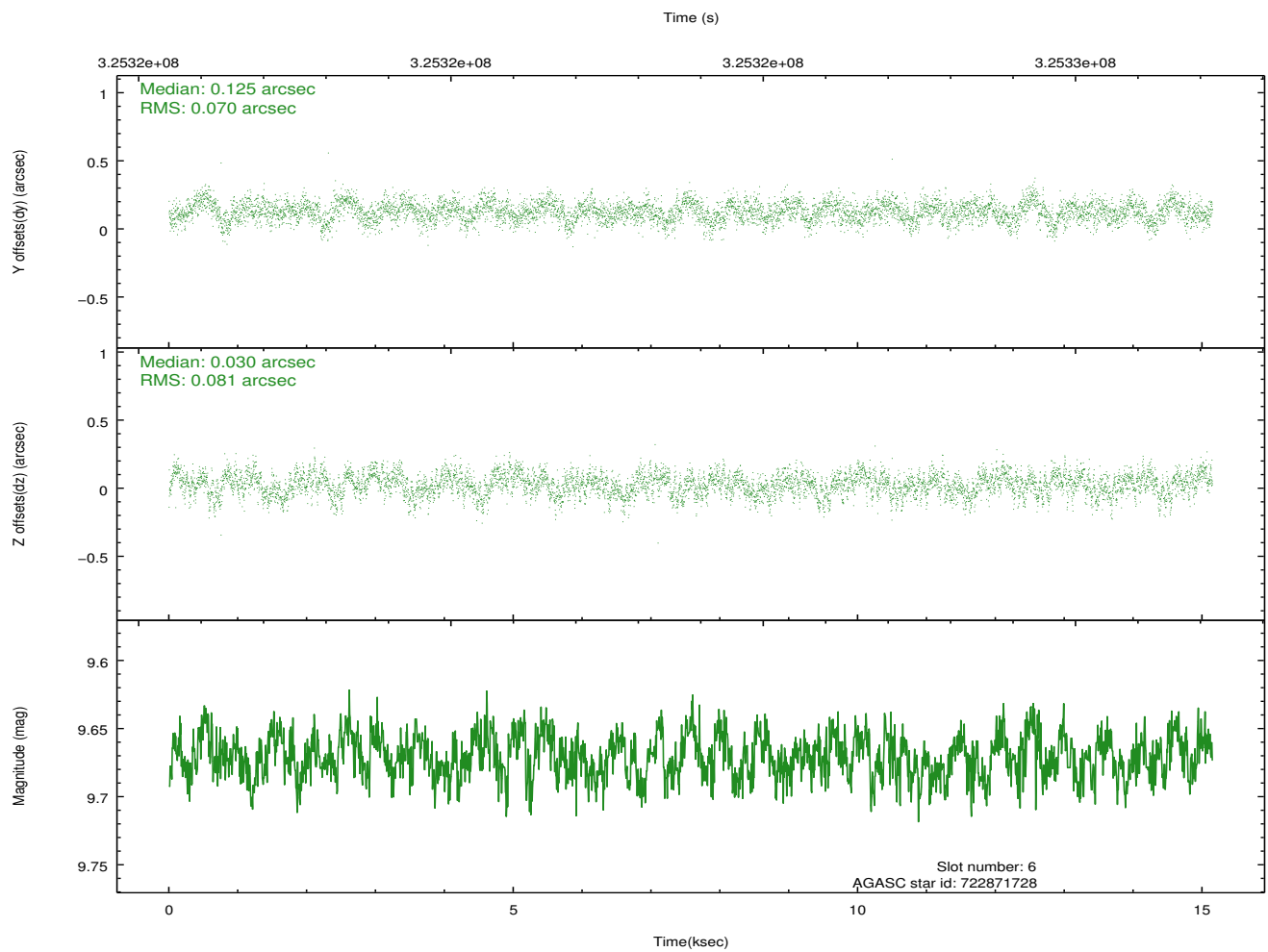
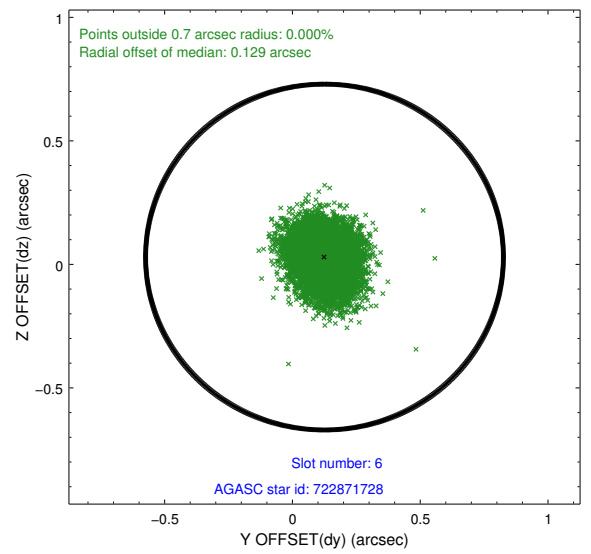
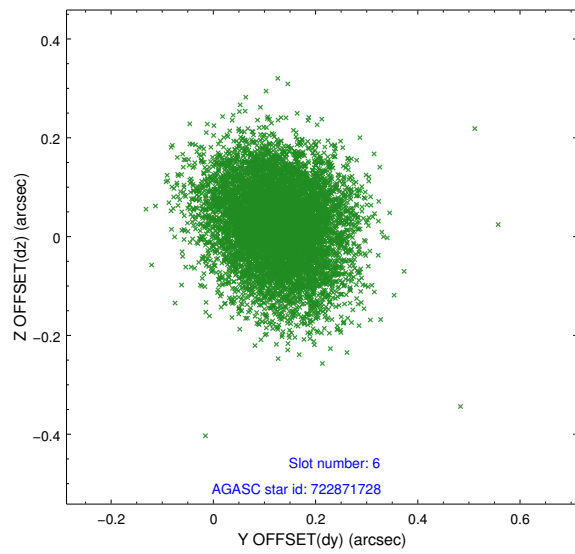
### 2.4.3 Slot 5



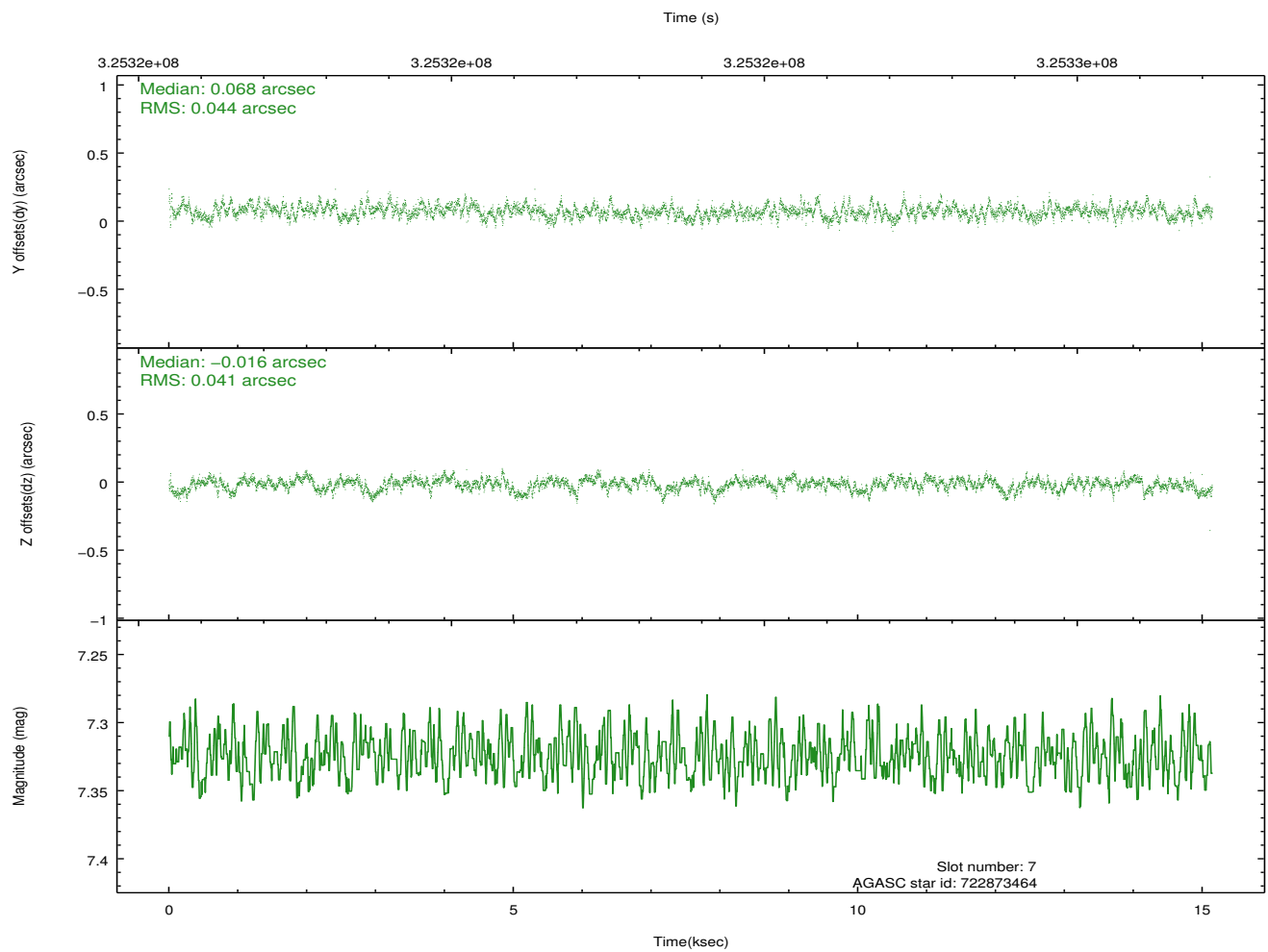
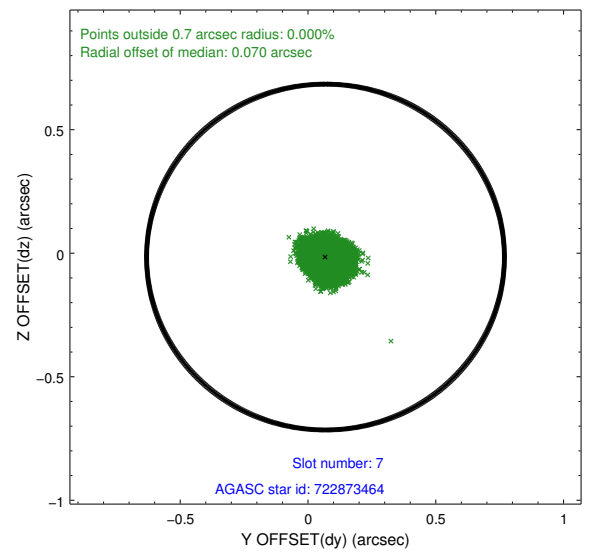
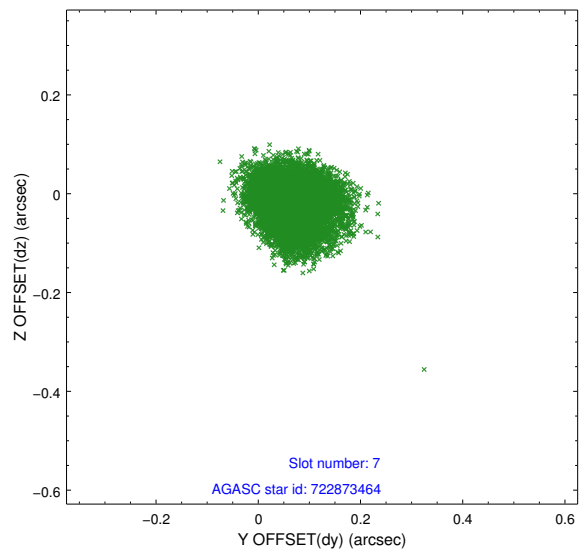
Time (s)



### 2.4.4 Slot 6

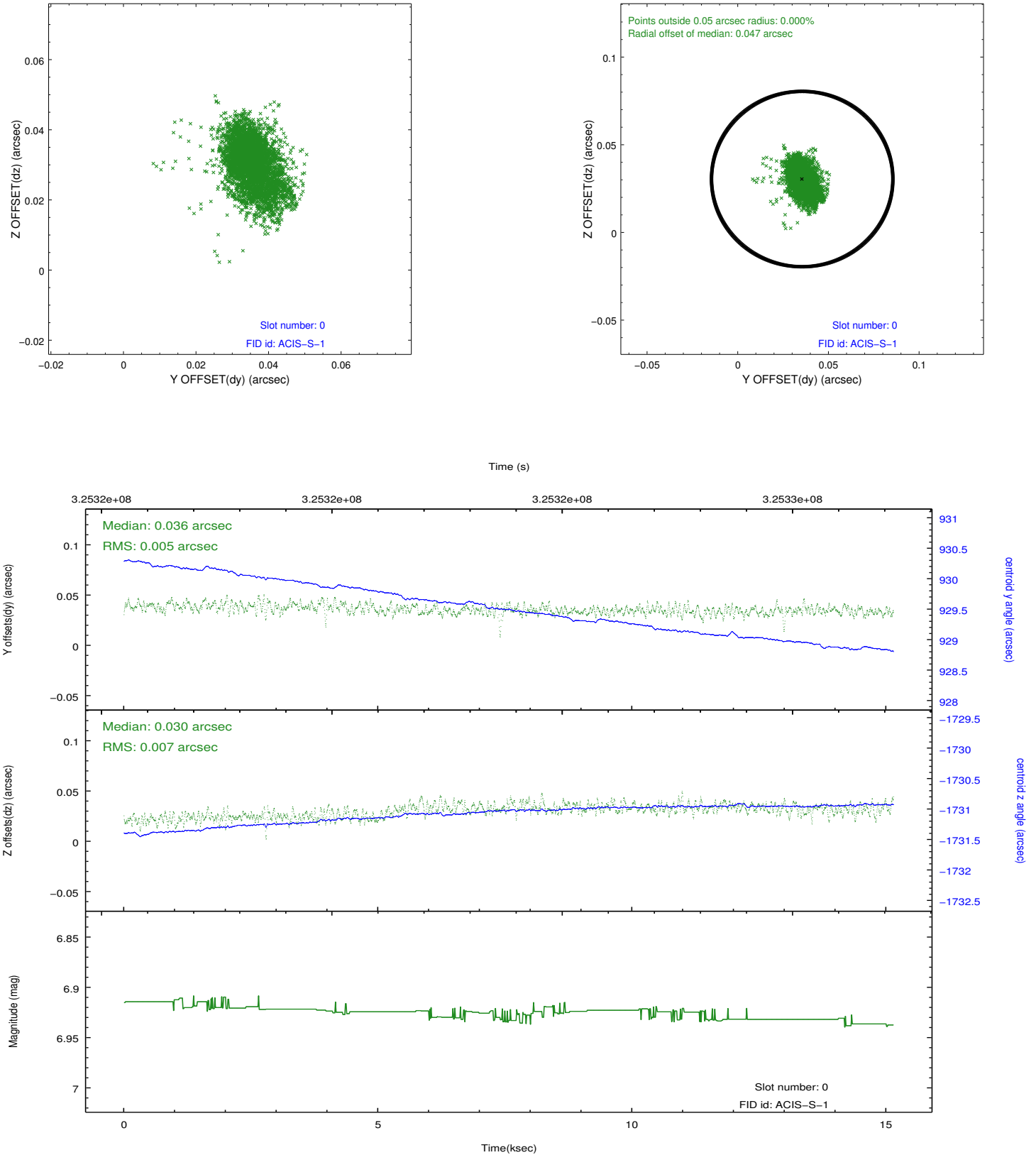


## 2.4.5 Slot 7

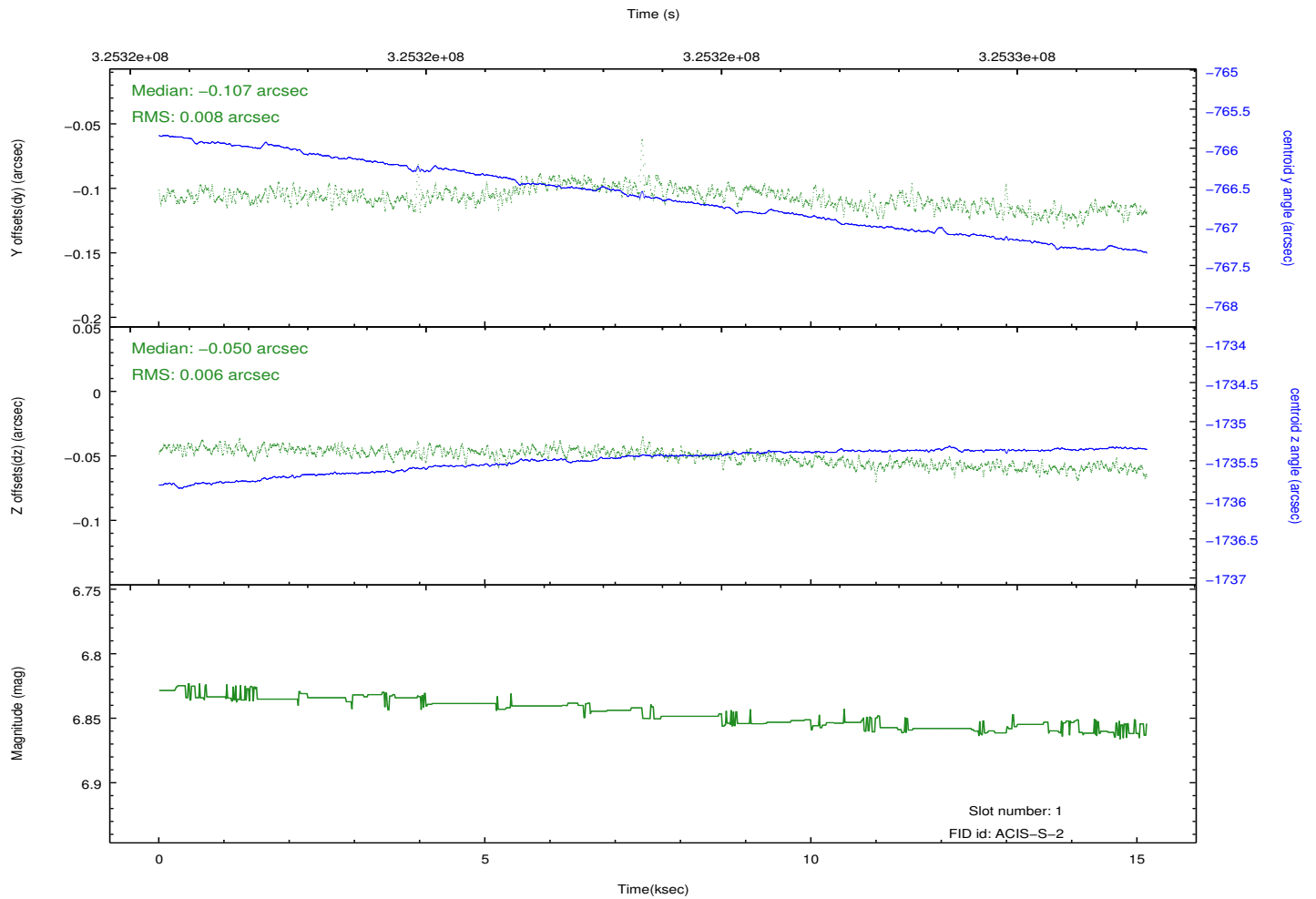
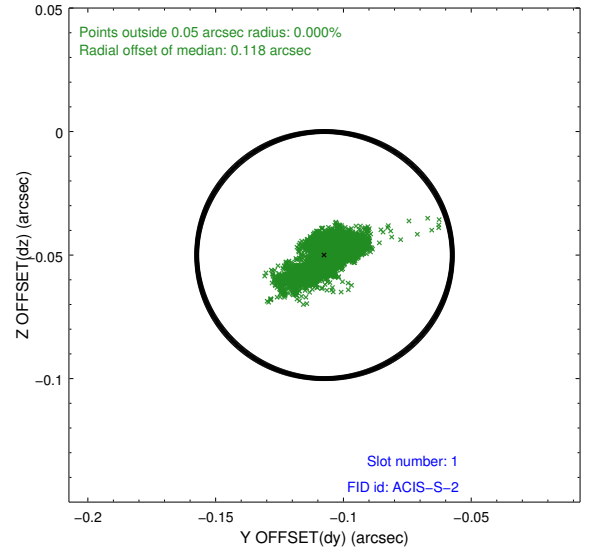
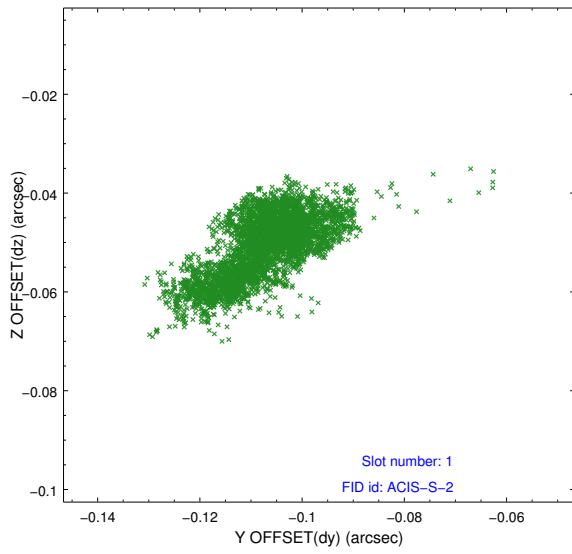


## 2.5 FID Slots

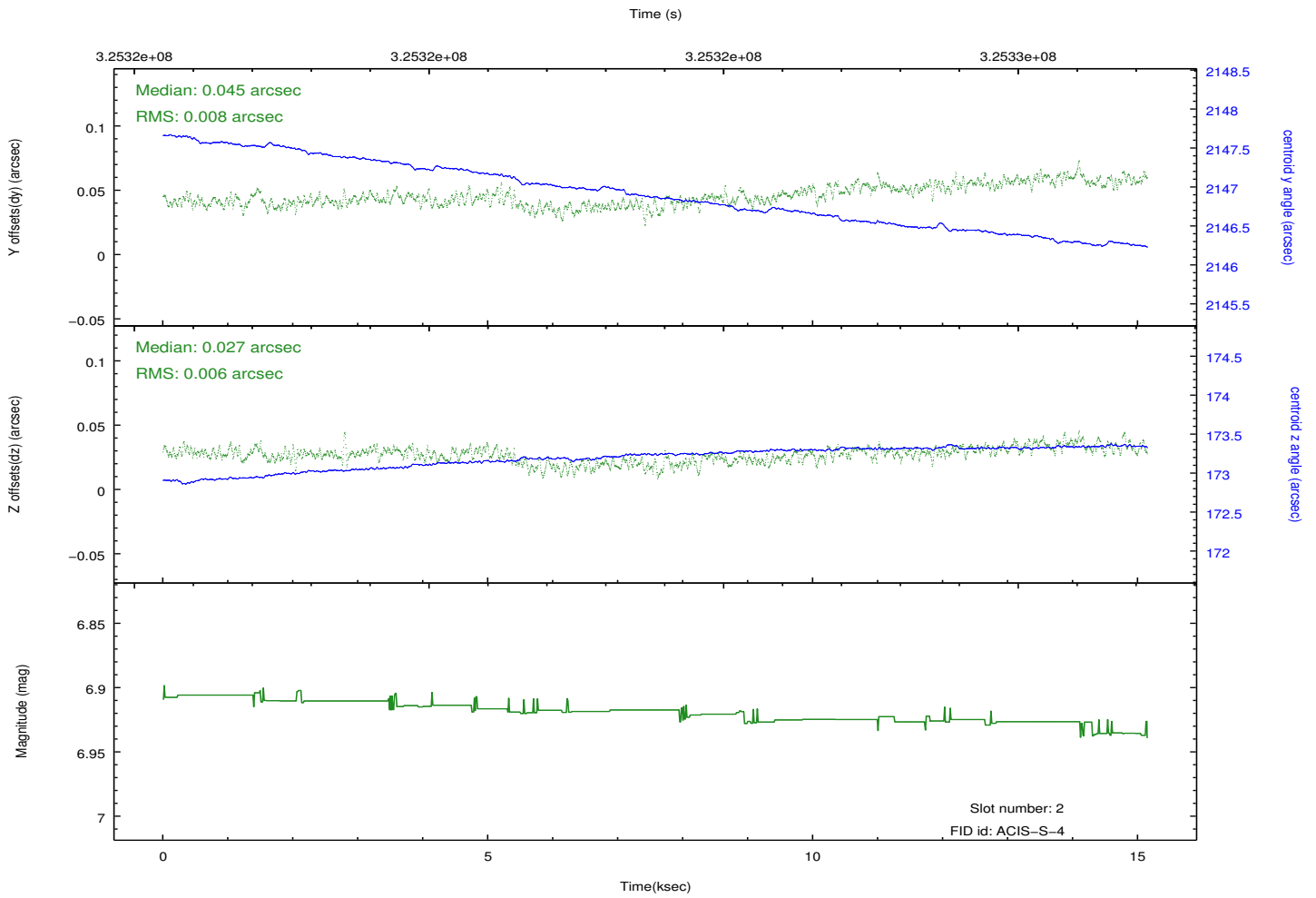
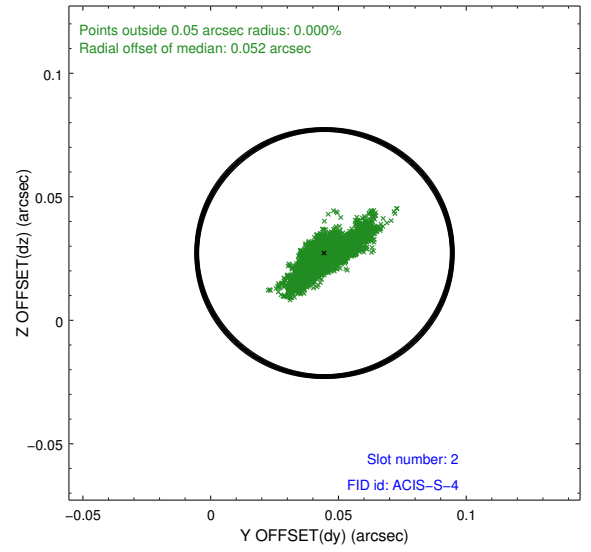
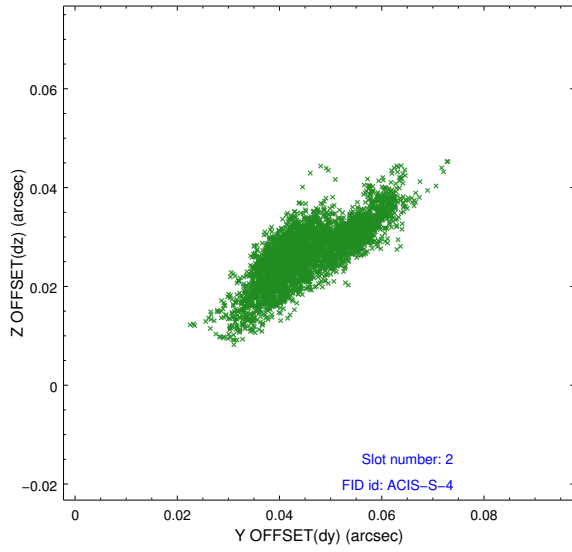
### 2.5.1 Slot 0



## 2.5.2 Slot 1



### 2.5.3 Slot 2



# A Summary

## A.1 Status

V&V Scientist	Beth Sundheim
V&V Date (YYYY-MM-DD)	2012.05.15
V&V Edition	1
V&V Disposition and Status	OK
V&V Charge Time	15.1458997

## A.2 Comments