

# V&V Reference Report

## L2 ASCDS Version : 8.4.4

Observation 9457 - L2 Version 2  
Chandra X-Ray Center

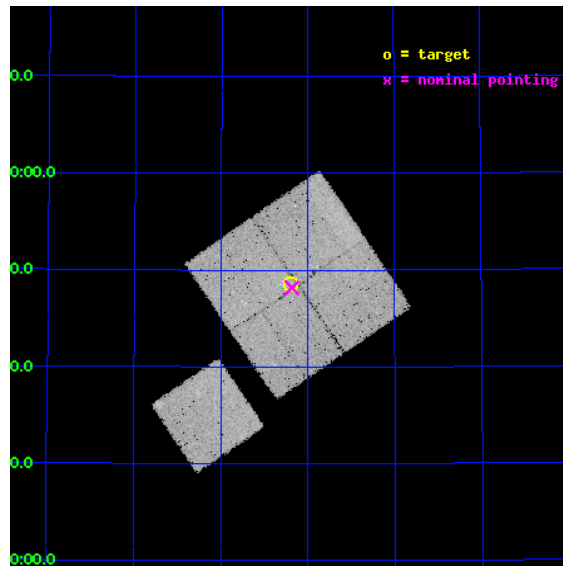
L2 Processing Date : May 17 2012

## Contents

<b>1</b>	<b>Front</b>	<b>2</b>
<b>2</b>	<b>OBI</b>	<b>3</b>
2.1	OBI . . . . .	3
2.1.1	Images . . . . .	3
2.1.2	Bias . . . . .	3
2.1.3	Parameters . . . . .	4
2.1.4	Events . . . . .	4
2.2	Compared Parameters . . . . .	5
2.3	Aspect . . . . .	6
2.4	Star Slots . . . . .	9
2.4.1	Slot 3 . . . . .	9
2.4.2	Slot 4 . . . . .	10
2.4.3	Slot 5 . . . . .	11
2.4.4	Slot 6 . . . . .	12
2.4.5	Slot 7 . . . . .	13
2.5	FID Slots . . . . .	14
2.5.1	Slot 0 . . . . .	14
2.5.2	Slot 1 . . . . .	15
2.5.3	Slot 2 . . . . .	16
<b>A</b>	<b>Summary</b>	<b>17</b>
A.1	Status . . . . .	17
A.2	Comments . . . . .	17

# 1 Front

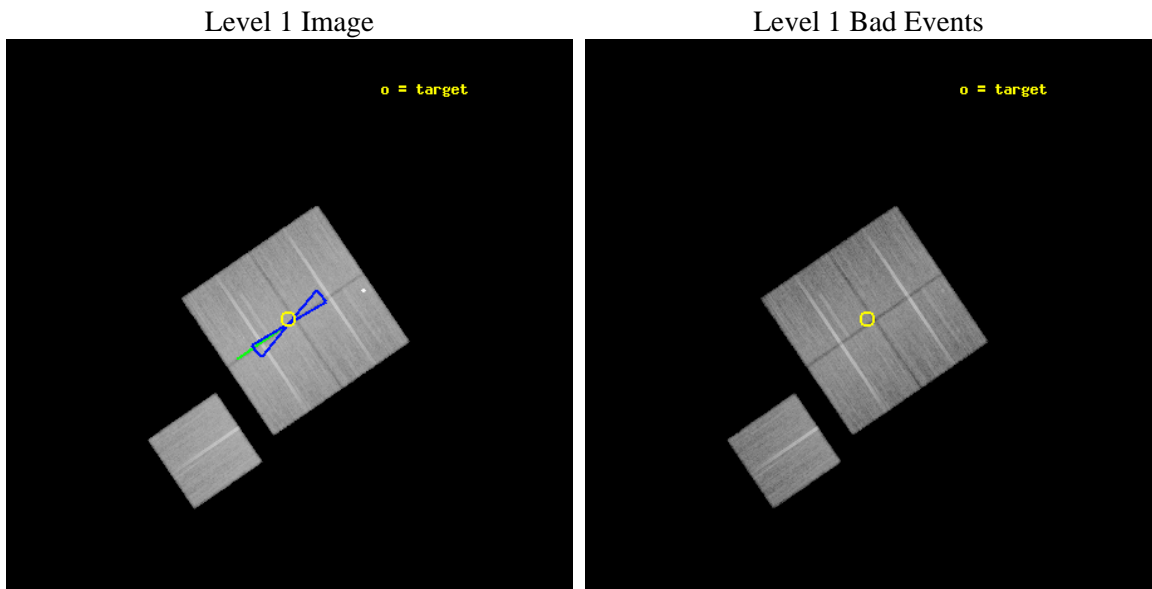
seq_num	900797	Sequence number
obs_id	9457	Observation id
title	The Evolution of Faint AGN at High Redshift	Proposal title
observer	Prof Kirpal Nandra	Principal investigator
object	AEGIS-2	Source name
dtcycle	0	&#160
cycle	P	events from which exps? Prim/Second/Both
ra_targ	214.8	Observer's specified target RA [deg]
dec_targ	52.810611	Observer's specified target Dec [deg]
ra_nom	214.79607481321	Nominal RA [deg]
dec_nom	52.802875771178	Nominal Dec [deg]
roll_nom	235.71180974087	Nominal Roll [deg]
revision	2	Processing version of data
ontime	33169.918304682	Sum of GTIs [s]
livetime	32736.528902693	Livetime [s]
ontime0	33166.777334273	Sum of GTIs [s]
ontime1	33169.918294489	Sum of GTIs [s]
ontime2	33176.200255156	Sum of GTIs [s]
ontime3	33169.918304682	Sum of GTIs [s]
ontime6	33169.918334484	Sum of GTIs [s]
l2events	111164	Number of level 2 events



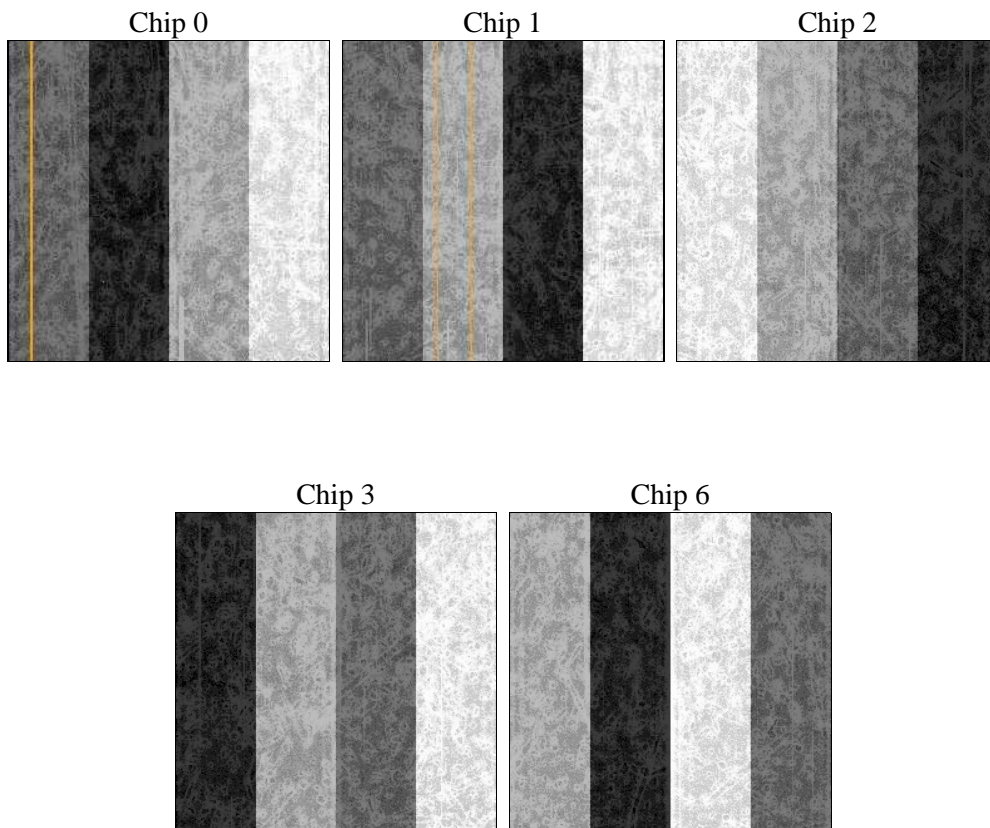
## 2 OBI

### 2.1 OBI

#### 2.1.1 Images



#### 2.1.2 Bias



### 2.1.3 Parameters

obi_num	0	Obi number	sched_exp_time	33000.000000	[s] Scheduled observation exposure time
ascdsver	8.4.4	Processing system revision	ontime	33169.918304682	Sum of GTIs [s]
caldsver	4.4.9	&#160	ontime0	33166.777334273	Sum of GTIs [s]
date	2012-05-17T04:00:36	Date and time of file creation	ontime1	33169.918294489	Sum of GTIs [s]
revision	2	Processing version of data	ontime2	33176.200255156	Sum of GTIs [s]
			ontime3	33169.918304682	Sum of GTIs [s]
			ontime6	33169.918334484	Sum of GTIs [s]
			l1events	1298193	Number of level 1 events

### 2.1.4 Events

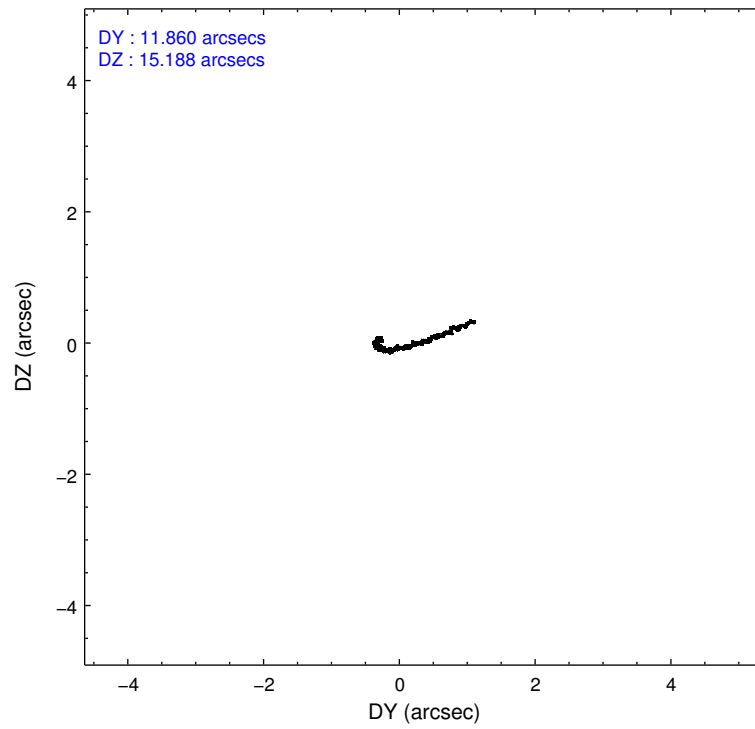
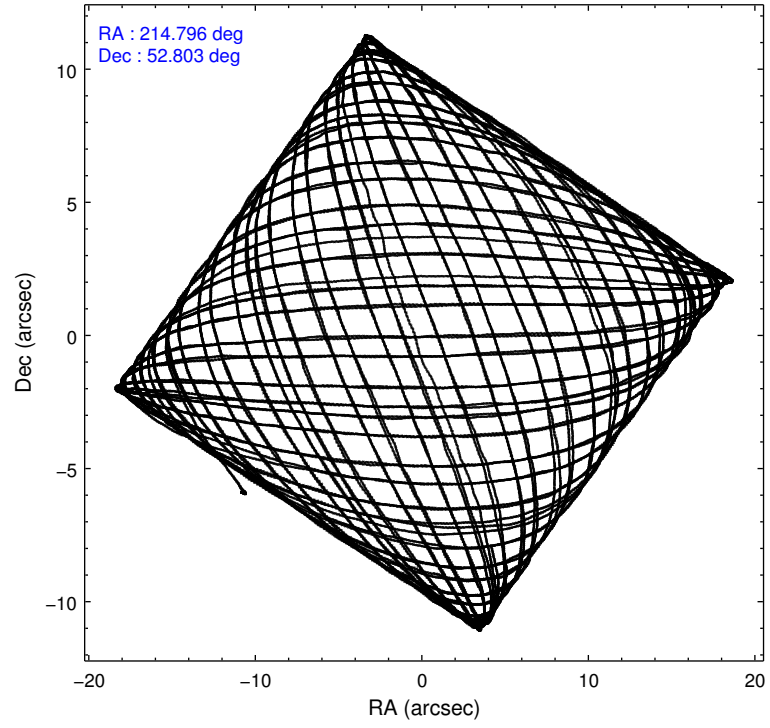
	ccd 0	ccd 1	ccd 2	ccd 3	ccd 6
level 1 events	260857	245259	271643	258480	261954
rejected events	224264	215915	245679	233239	235022
rejected %	85%	88%	90%	90%	89%

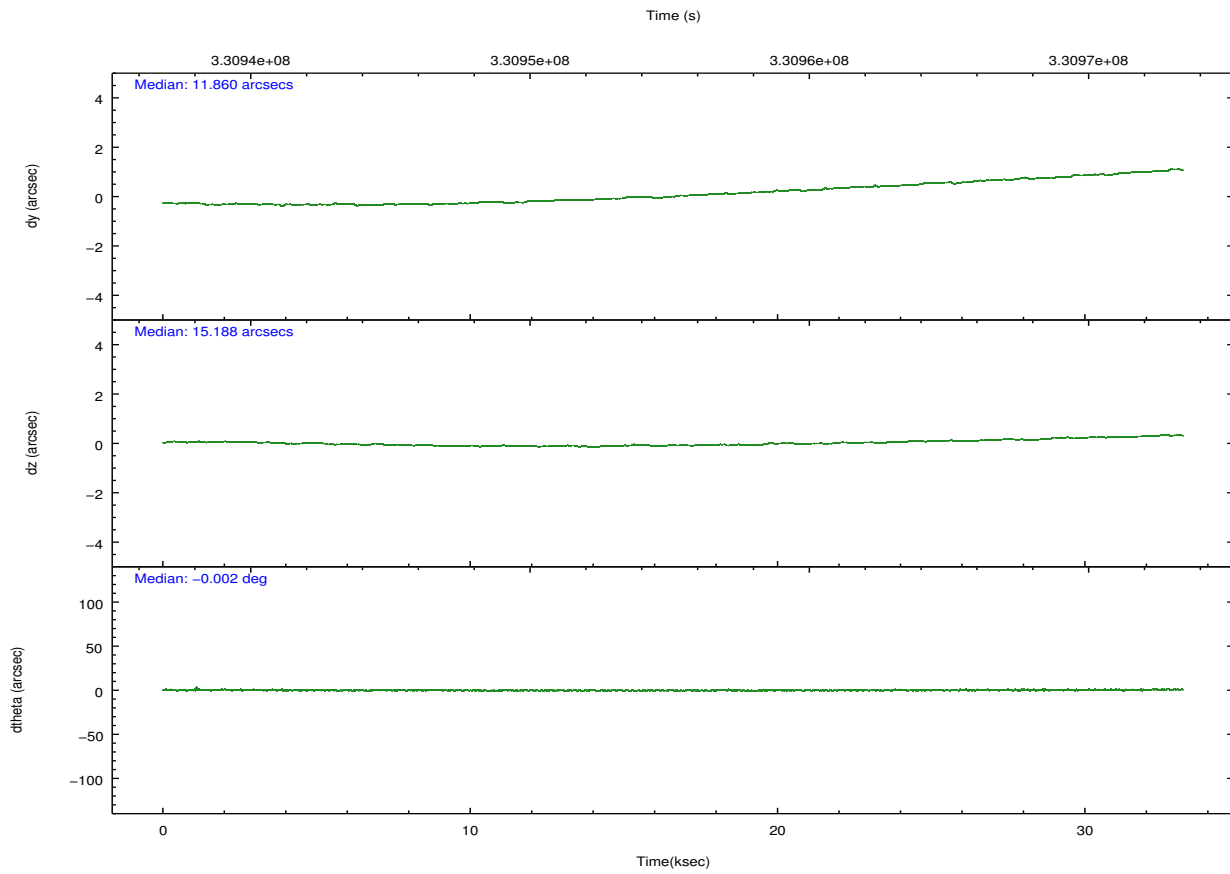
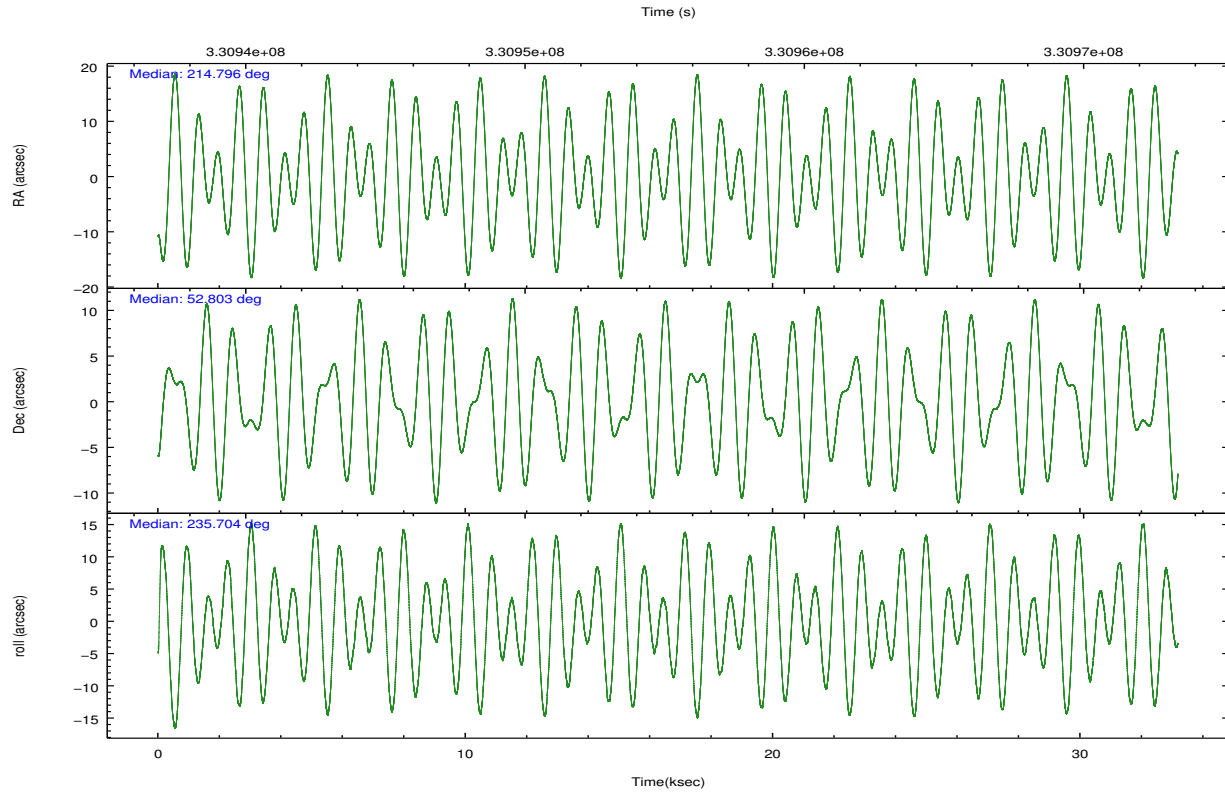
	ccd 0	ccd 1	ccd 2	ccd 3	ccd 6
grade 0 events	19028	10369	9129	8938	9328
	7%	4%	3%	3%	3%
grade 1 events	220	134	142	147	135
	0%	0%	0%	0%	0%
grade 2 events	6554	6818	6196	5555	5887
	2%	2%	2%	2%	2%
grade 3 events	2943	3145	2763	2823	2948
	1%	1%	1%	1%	1%
grade 4 events	2841	3224	2859	2785	2930
	1%	1%	1%	1%	1%
grade 5 events	9241	10411	8932	10830	10598
	3%	4%	3%	4%	4%
grade 6 events	5243	5797	5029	5150	5850
	2%	2%	1%	1%	2%
grade 7 events	214787	205361	236593	222252	224278
	82%	83%	87%	85%	85%

## 2.2 Compared Parameters

Parameter	Planned	Actual	Parameter	Planned	Actual
Instrument	ACIS	ACIS	Obspar format version number	7	7
Detector	ACIS-01236	ACIS-01236	Obspar file type	PREDICTED	ACTUAL
Grating	NONE	NONE	Obspar update status	NONE	UPDATED
Data mode	VFAINT	VFAINT	CCD I0 on	Y	Y
Observation mode	POINTING	POINTING	CCD I1 on	Y	Y
[deg] Pointing RA	214.799319	214.7960748132104	CCD I2 on	Y	Y
[deg] Pointing Dec	52.830302	52.80287577117785	CCD I3 on	Y	Y
[deg] Pointing Roll	235.500545	235.7118097408675	CCD S0 on	N	N
[deg] Roll angle	50.000000	50.000000	CCD S1 on	N	N
[deg] Roll tolerance	10.000000	10.000000	CCD S2 on	O1	Y
Roll constraint allows 180D rotation	Y	Y	CCD S3 on	N	N
[mm] SIM focus pos	-0.782348	-0.7809083437167272	CCD S4 on	N	N
[mm] SIM defocus	0	0.001439871863259334	CCD S5 on	N	N
[mm] SIM translation stage pos	-233.592463	-233.5874344608287	Number of optional ACIS chips dropped	0	0
[mm] SIM translation stage offset	0	-0.005018542100998502	On-chip summing requested	N	N
[s] Observation start time (MET)	330938718.184000	330937718.05243	Subarray requested	NONE	NONE
Observation start date	2008-06-27T07:24:13	2008-06-27T07:08:38	Alternating exposures requested	N	N
[s] Observation end time (MET)	330971718.184000	330972489.64164	[s] Primary exposure time	0.000000	3.1
Observation end date	2008-06-27T16:34:13	2008-06-27T16:48:09			
Read mode	TIMED	TIMED			

## 2.3 Aspect



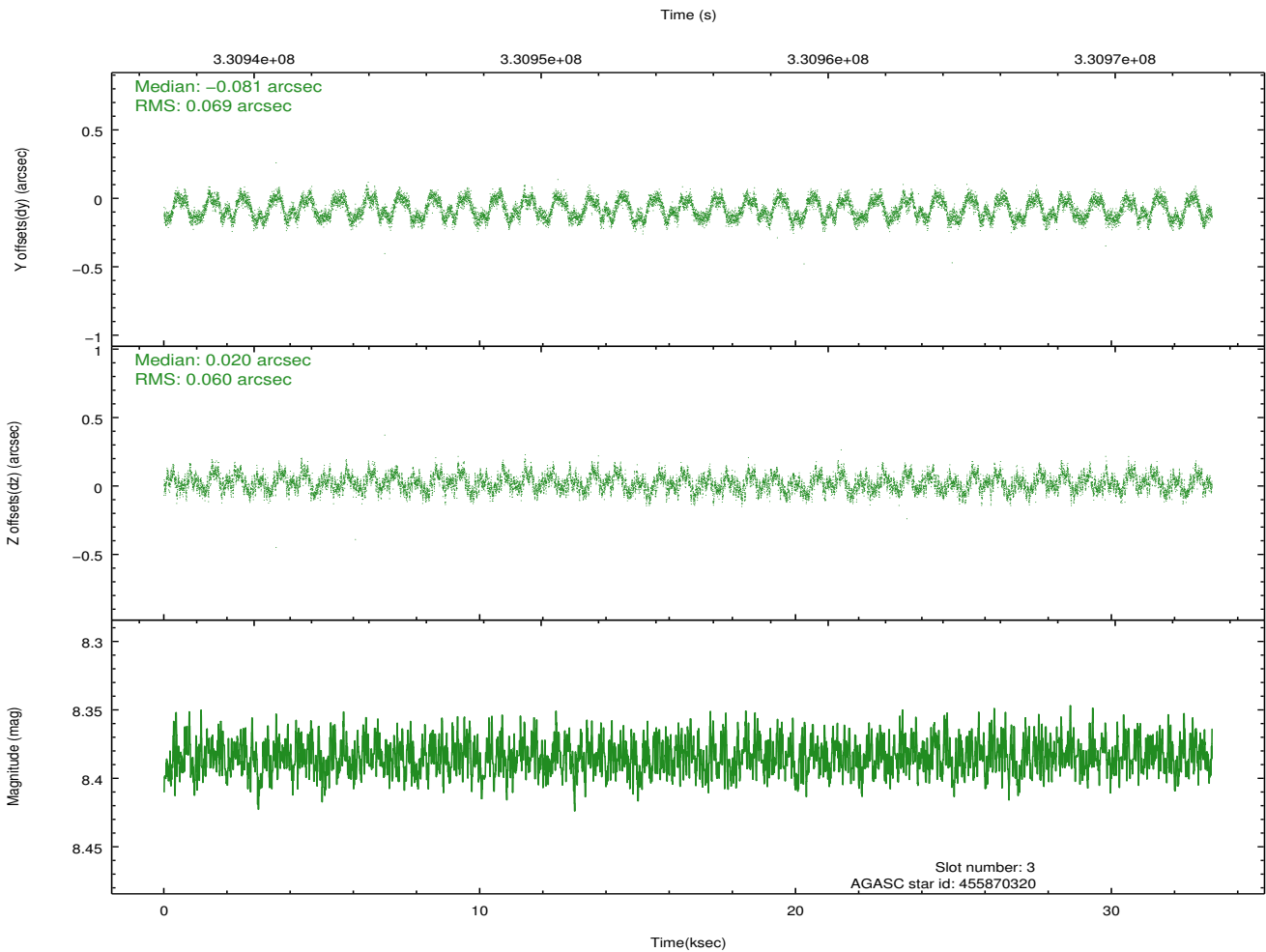
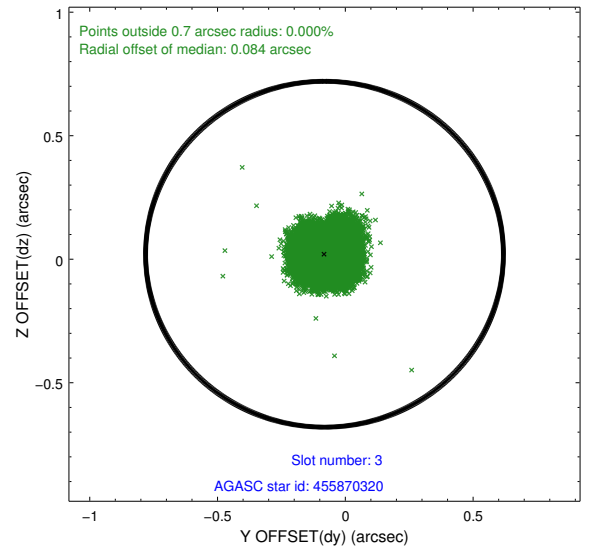
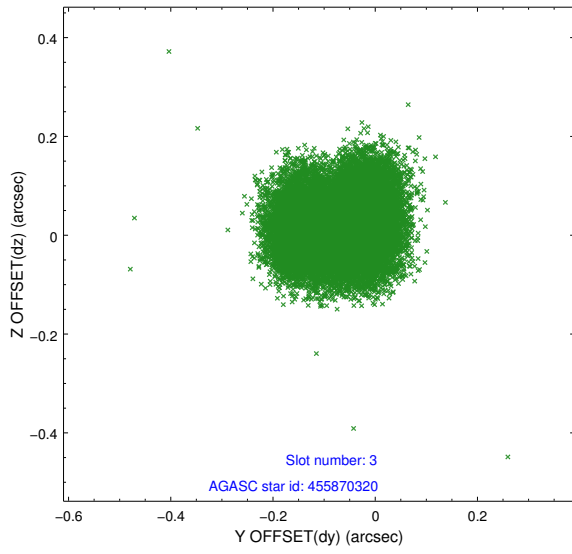


### Slot Statistics

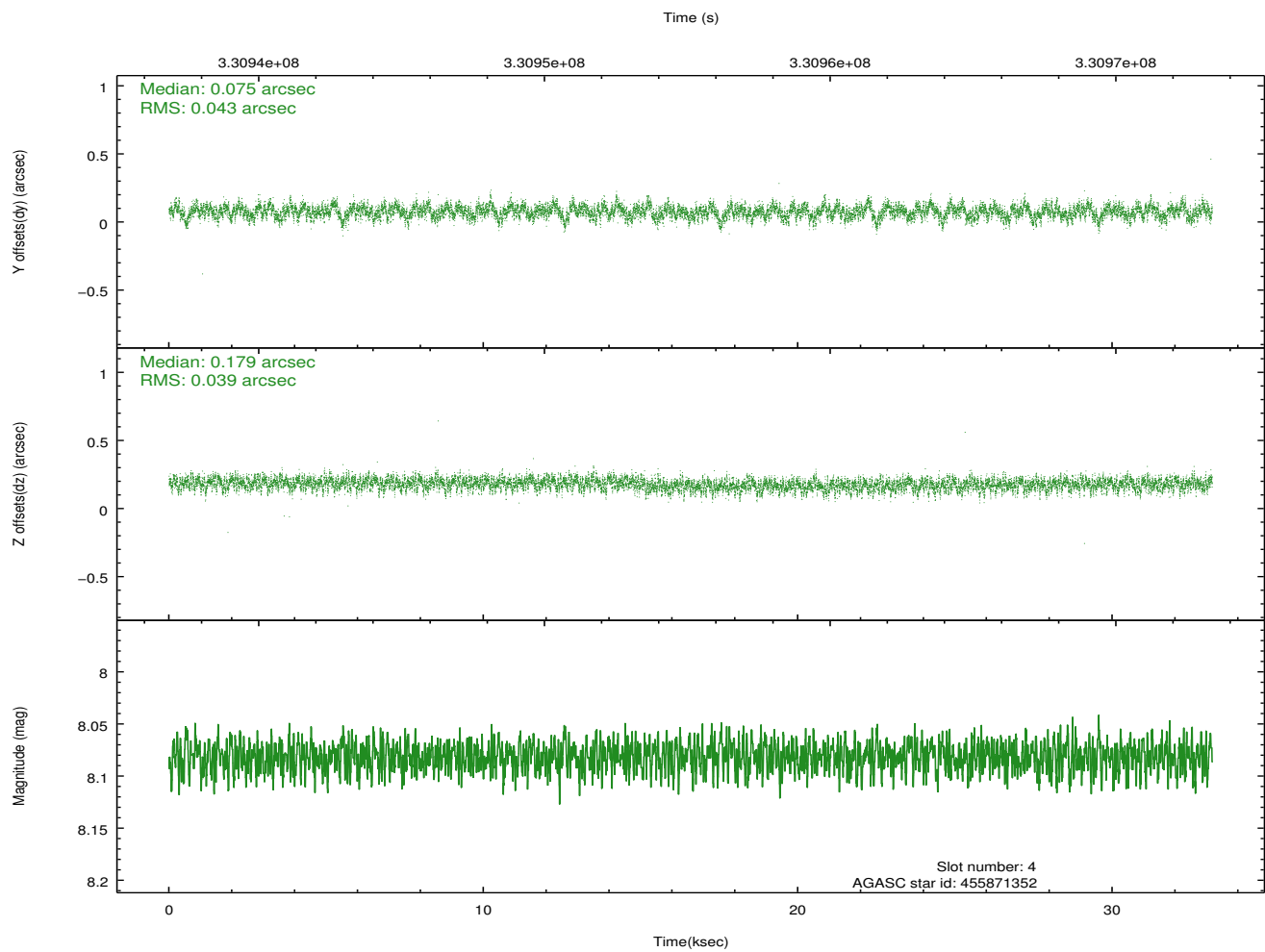
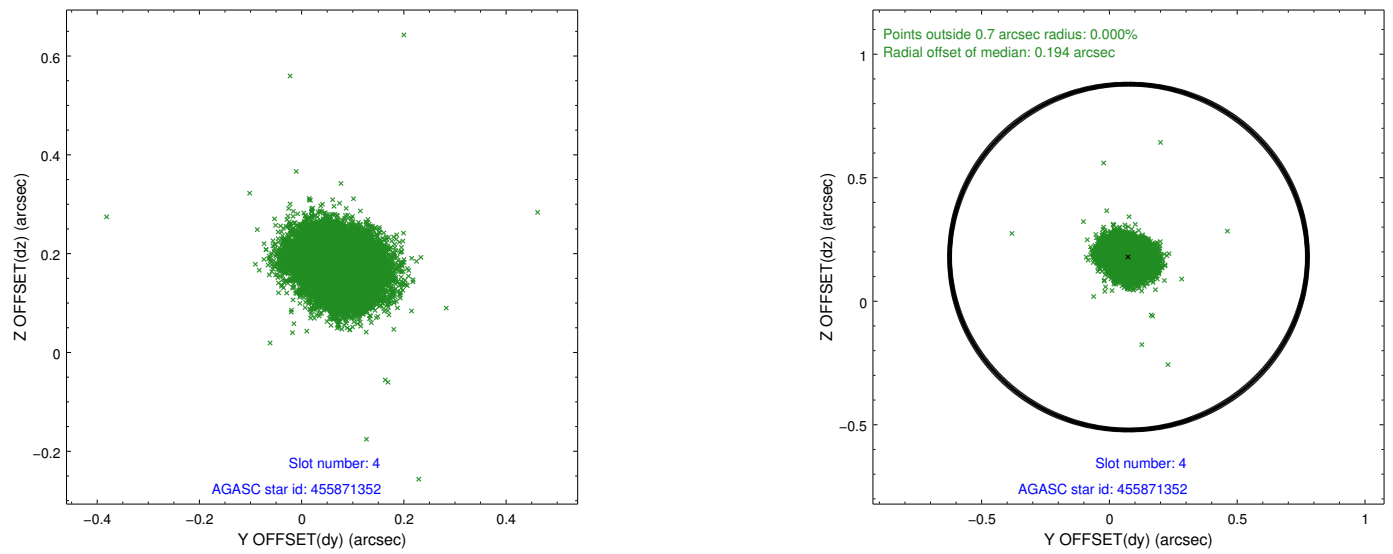
slot	status	id	mag	n_pts	med_dy	med_dz	dr1	dr2	ra	dec	mean_y	mean_z
0	FID	ACIS-I-1	6.97	8092	-0.005	0.020	0.013	0.027	0.000000	0.000000	927.54	-838.80
1	FID	ACIS-I-5	6.96	8092	-0.144	0.020	0.012	0.028	0.000000	0.000000	-1820.69	1058.66
2	FID	ACIS-I-6	6.97	8093	0.057	0.030	0.009	0.017	0.000000	0.000000	393.08	1703.23
3	GUIDE	455870320	8.38	16178	-0.081	0.020	0.100	0.144	214.874440	52.401638	1178.46	1010.31
4	GUIDE	455871352	8.08	16176	0.075	0.179	0.061	0.099	215.099961	52.172669	1574.29	1887.67
5	GUIDE	505806936	7.03	16184	0.137	-0.024	0.071	0.114	213.820815	52.535927	2075.72	-1173.48
6	GUIDE	505812088	8.15	16183	-0.051	0.023	0.064	0.110	214.186617	53.263562	-542.12	-1974.06
7	GUIDE	505812376	7.67	16181	-0.082	-0.196	0.048	0.079	214.039537	52.937930	607.63	-1583.17

## 2.4 Star Slots

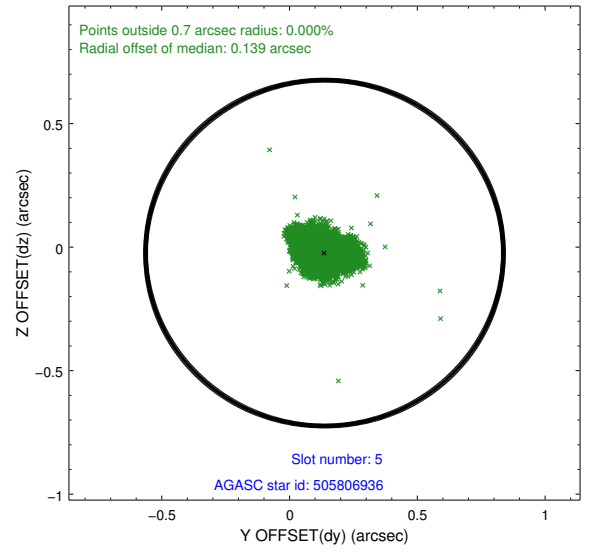
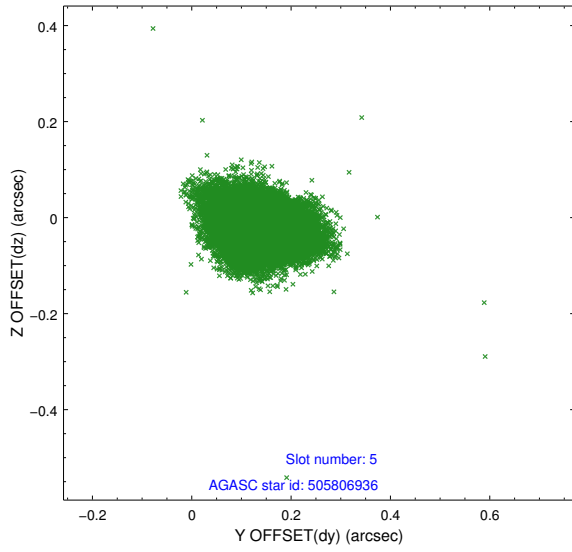
### 2.4.1 Slot 3



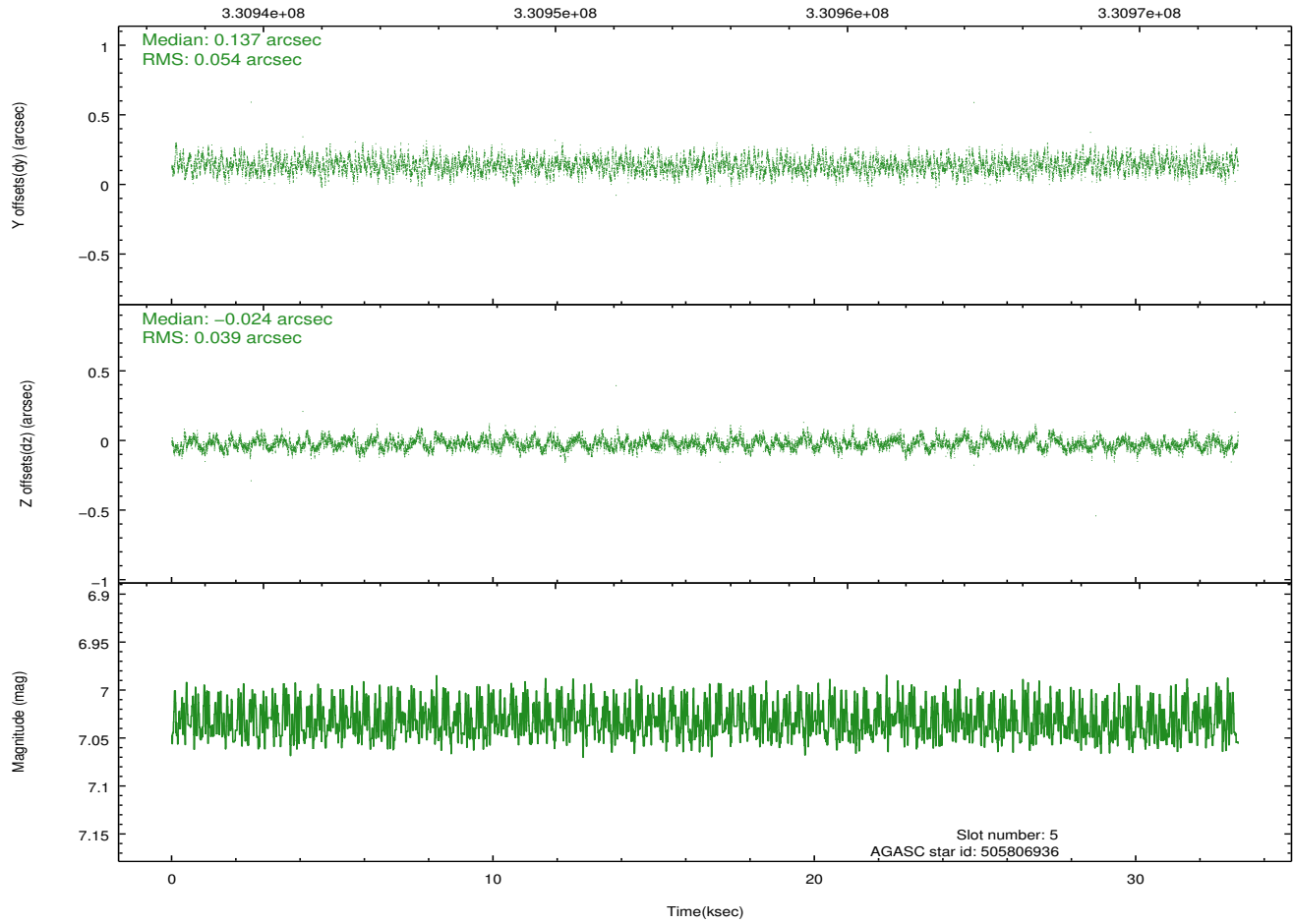
## 2.4.2 Slot 4



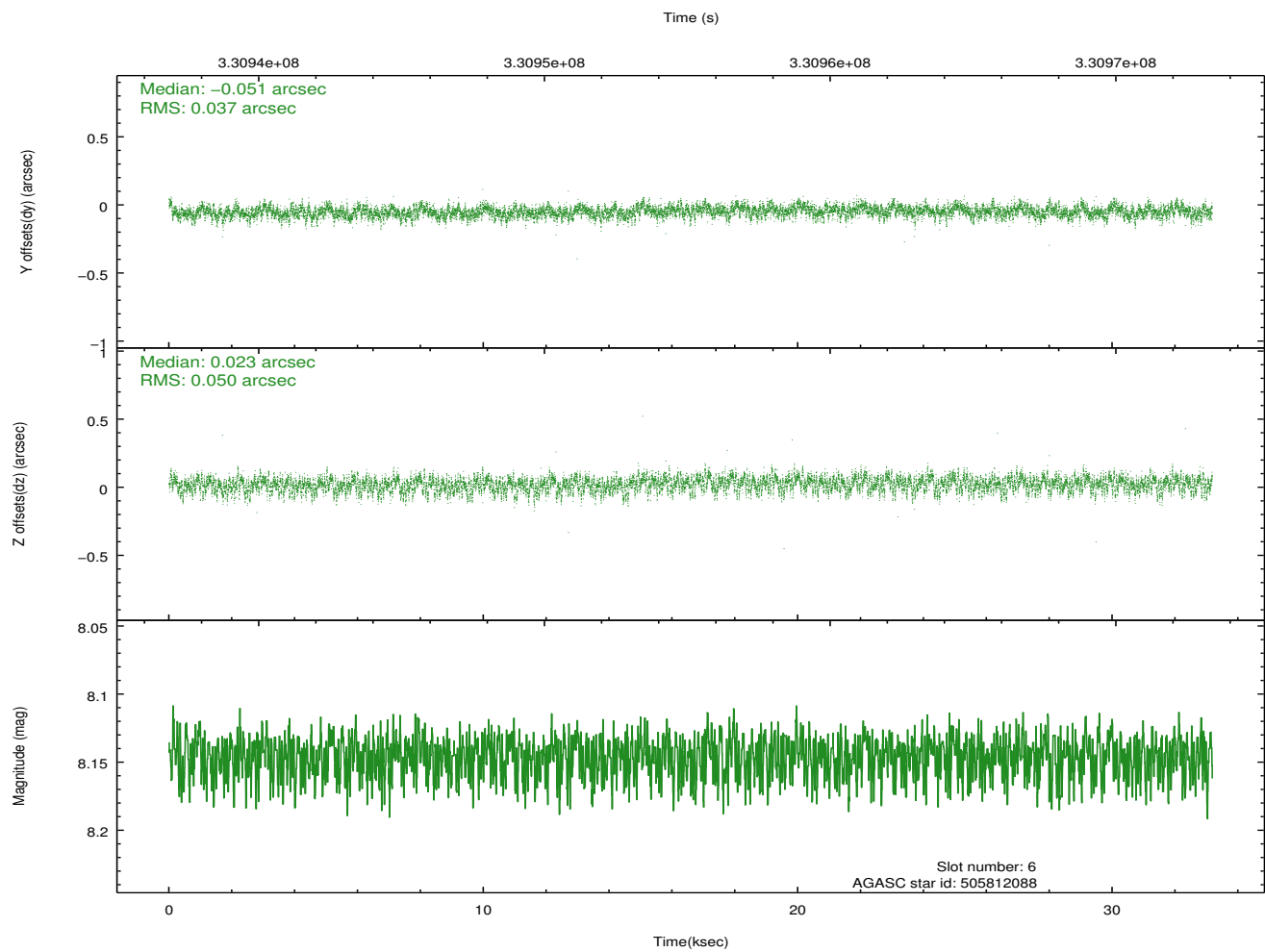
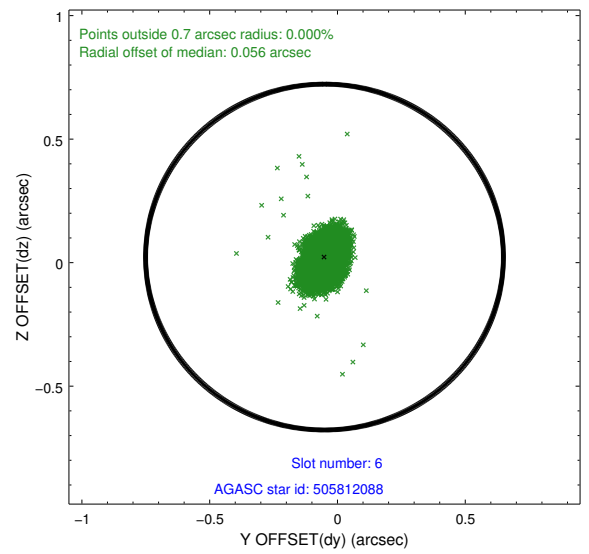
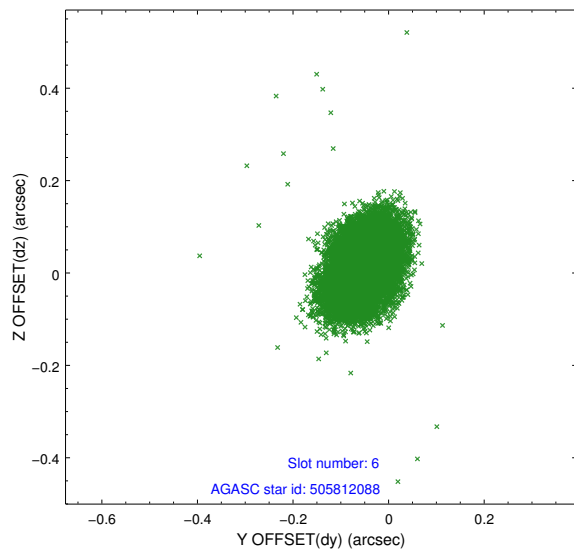
### 2.4.3 Slot 5



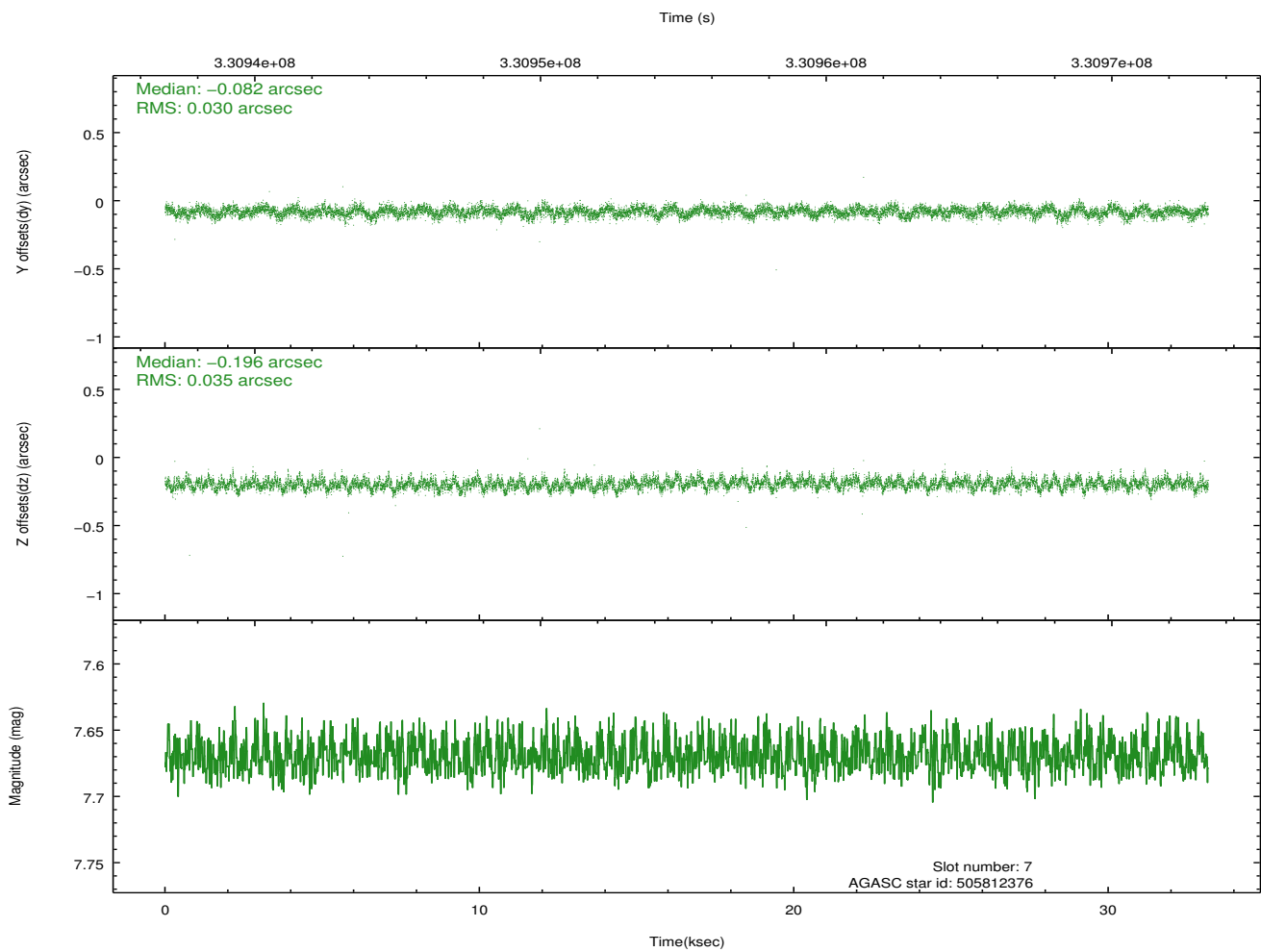
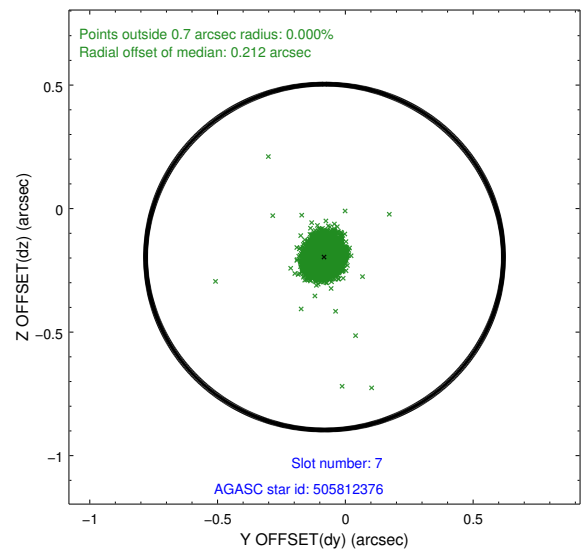
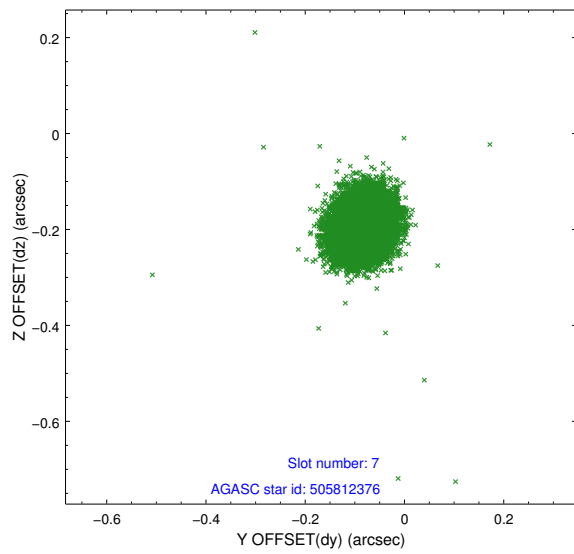
Time (s)



## 2.4.4 Slot 6

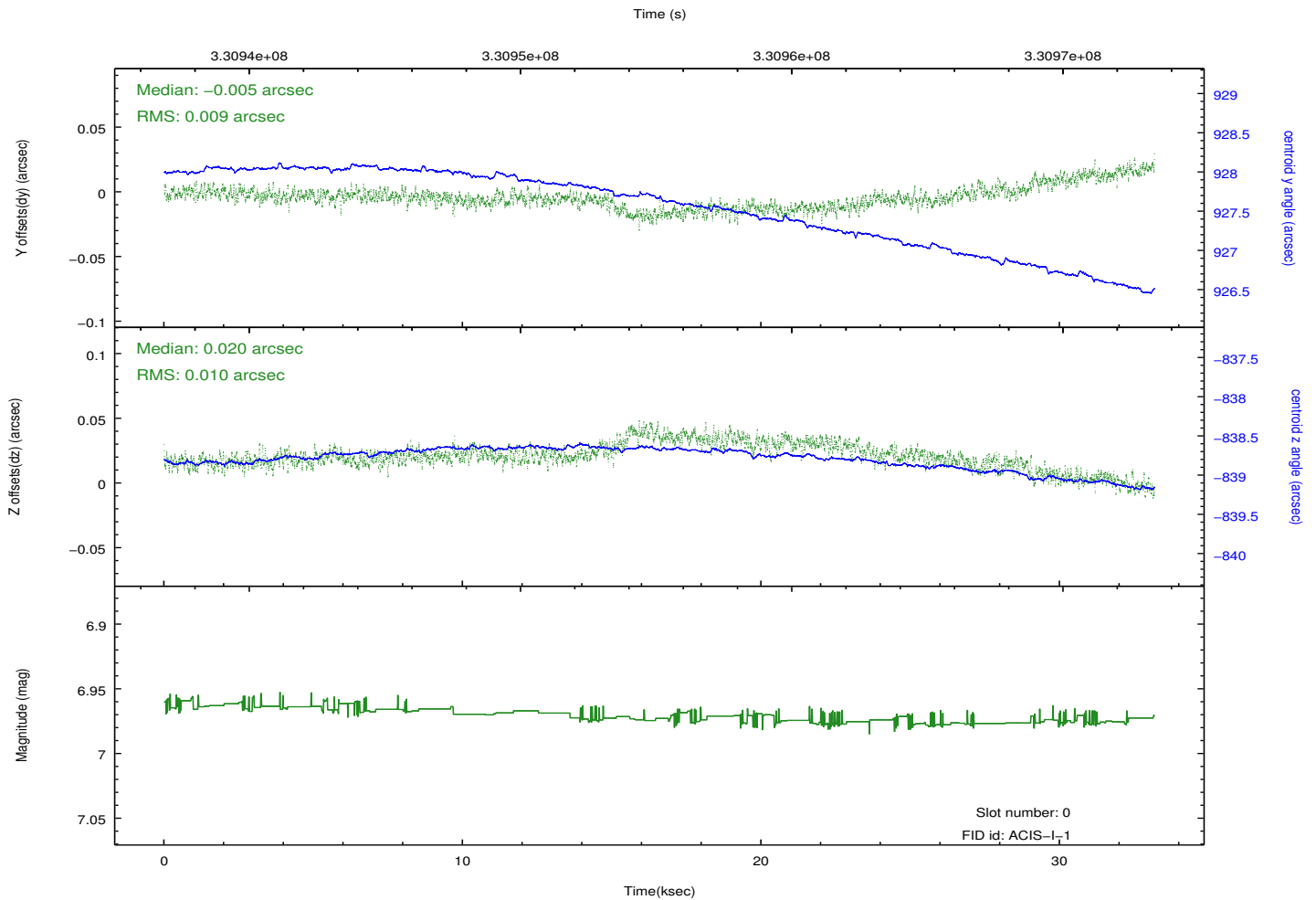
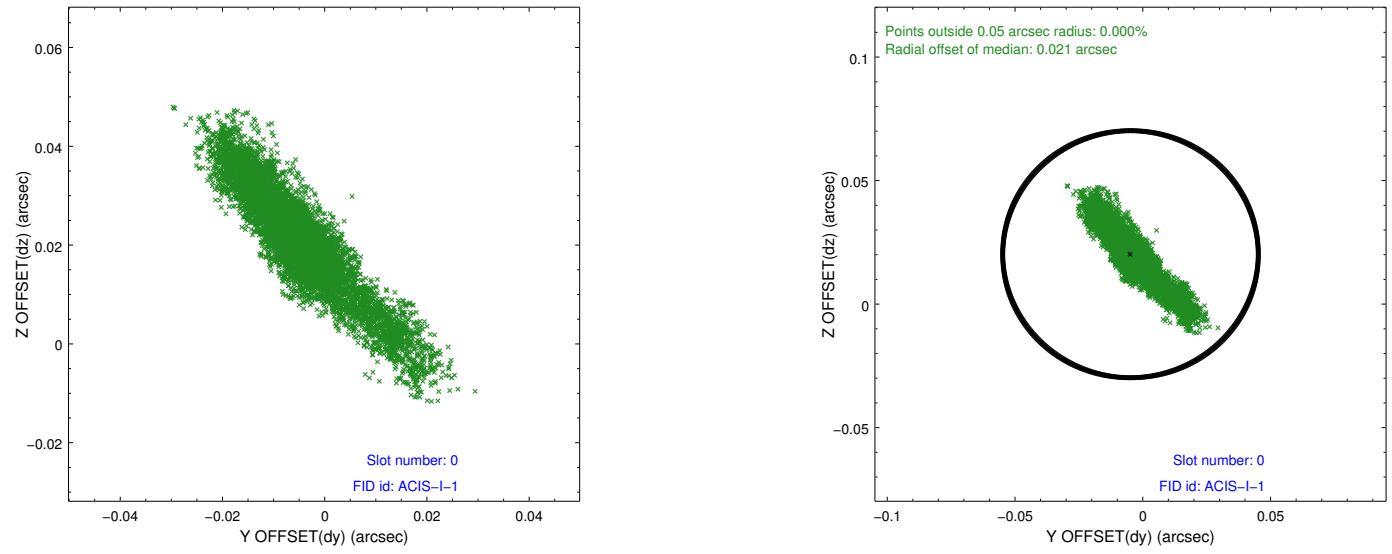


## 2.4.5 Slot 7

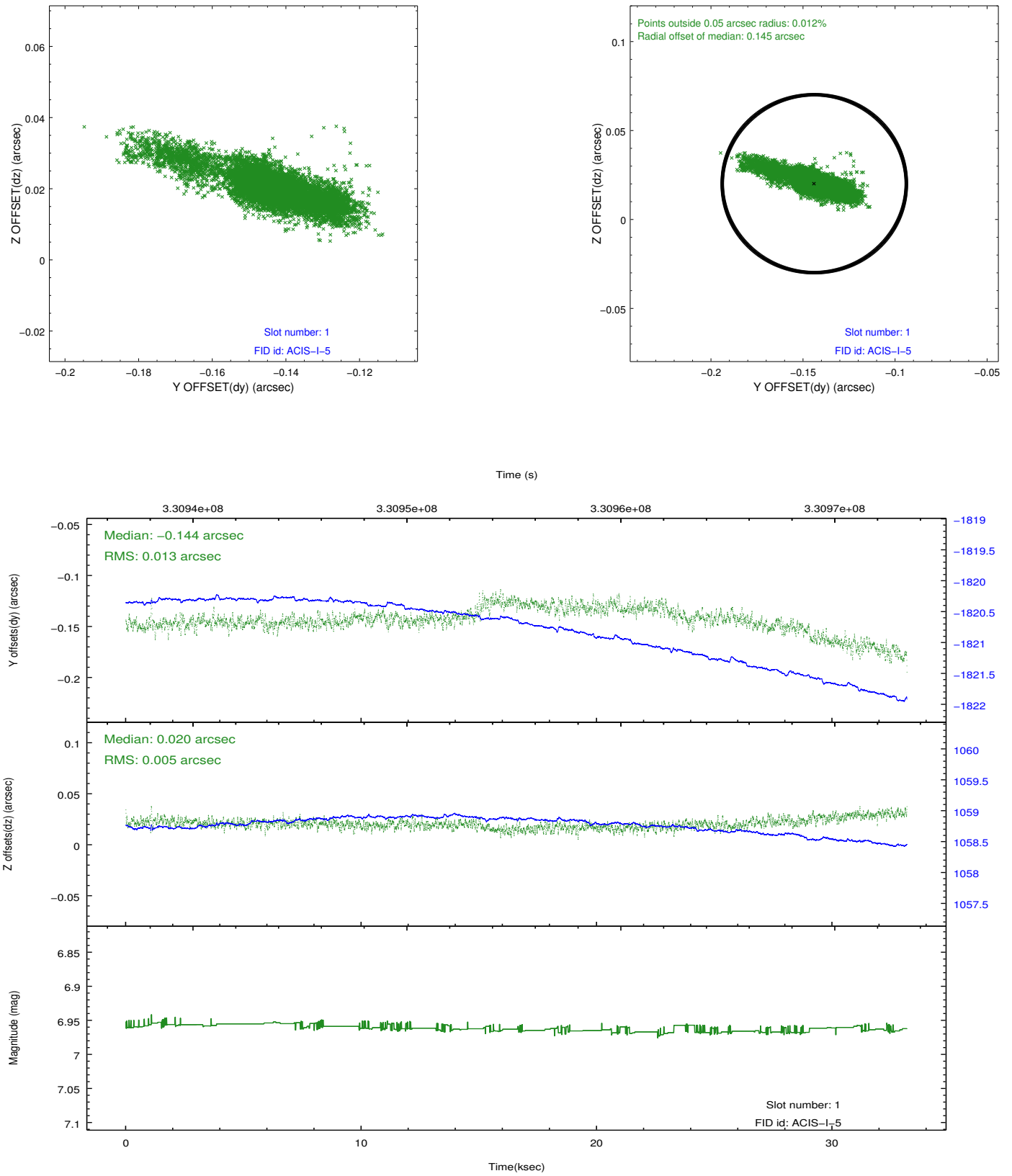


## 2.5 FID Slots

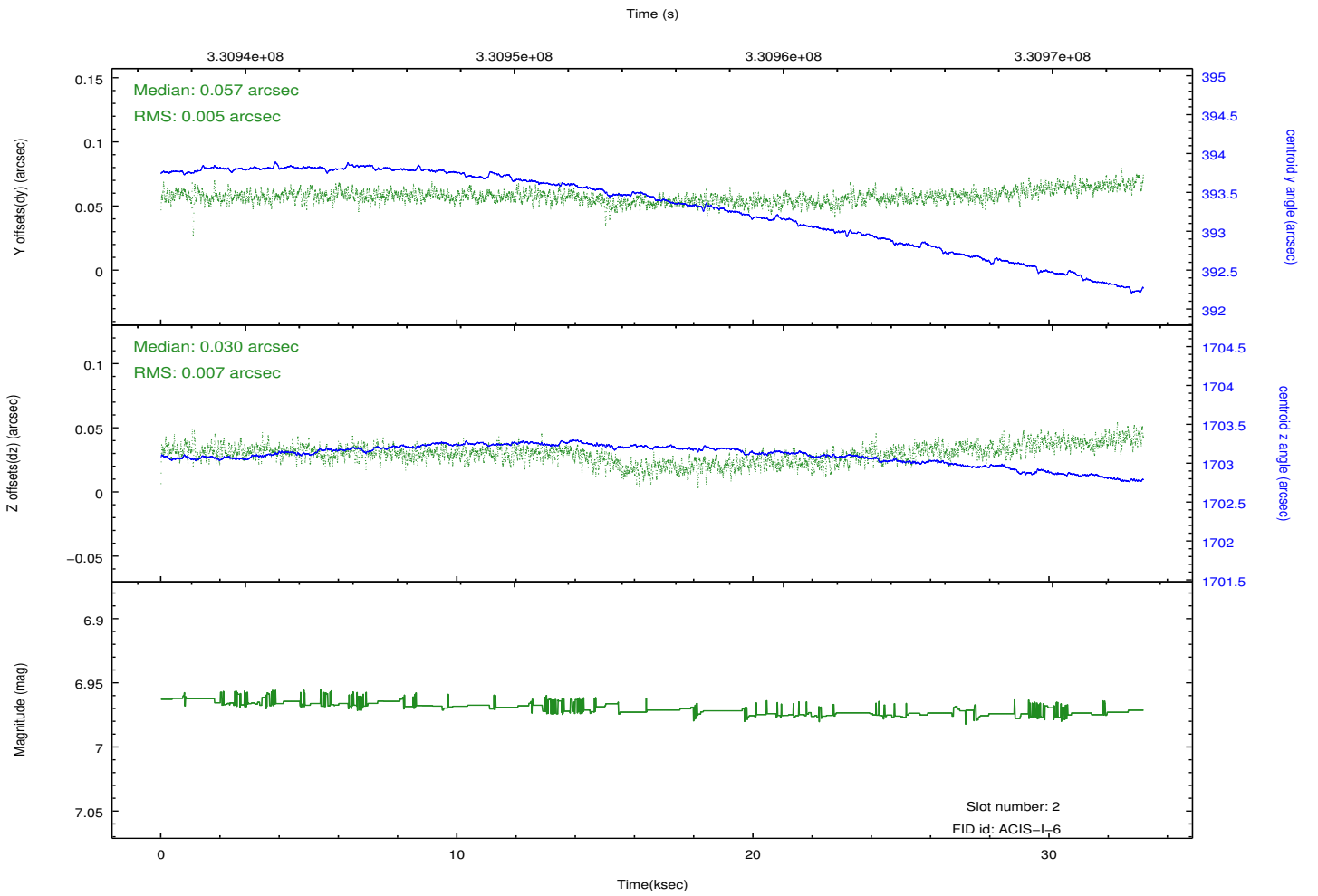
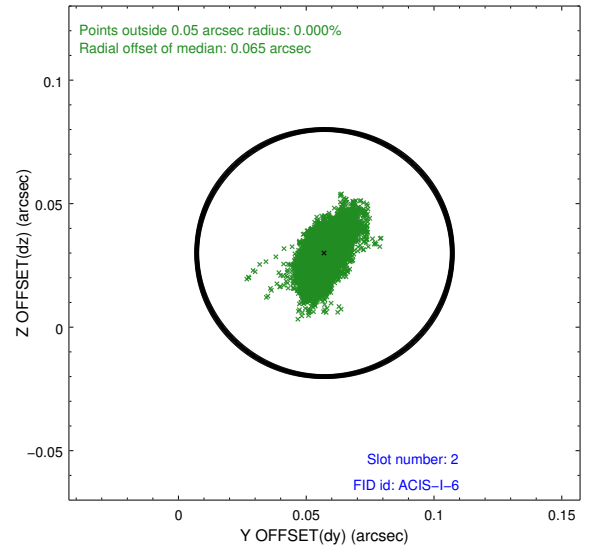
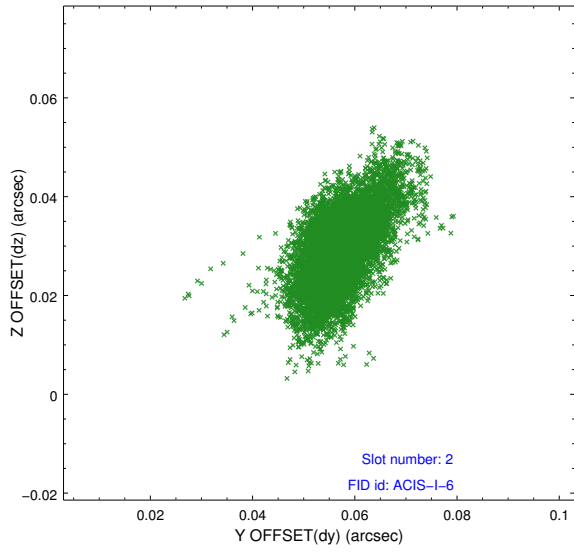
### 2.5.1 Slot 0



## 2.5.2 Slot 1



### 2.5.3 Slot 2



# A Summary

## A.1 Status

V&V Scientist	Beth Sundheim
V&V Date (YYYY-MM-DD)	2012.05.23
V&V Edition	1
V&V Disposition and Status	OK
V&V Charge Time	33.1699183

## A.2 Comments

Joint proposal with Spitzer.

Roll preference met.