

V&V Reference Report

L2 ASCDS Version : 8.4.4

Observation 9547 - L2 Version 2
Chandra X-Ray Center

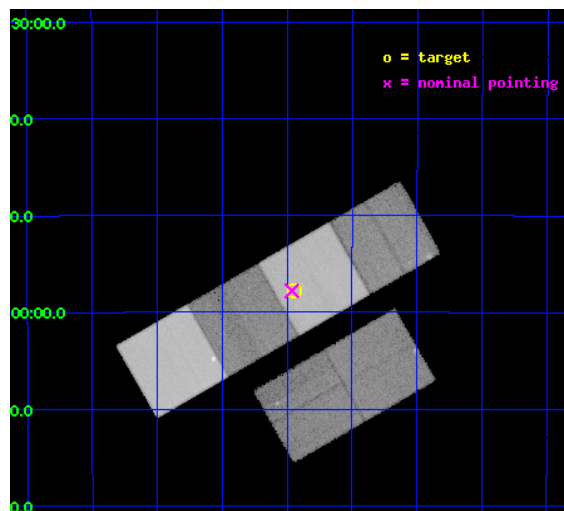
L2 Processing Date : May 23 2012

Contents

1	Front	2
2	OBI	3
2.1	OBI	3
2.1.1	Images	3
2.1.2	Bias	3
2.1.3	Parameters	4
2.1.4	Events	4
2.2	Compared Parameters	5
2.3	Aspect	6
2.4	Star Slots	9
2.4.1	Slot 3	9
2.4.2	Slot 4	10
2.4.3	Slot 5	11
2.4.4	Slot 6	12
2.4.5	Slot 7	13
2.5	FID Slots	14
2.5.1	Slot 0	14
2.5.2	Slot 1	15
2.5.3	Slot 2	16
A	Summary	17
A.1	Status	17
A.2	Comments	17

1 Front

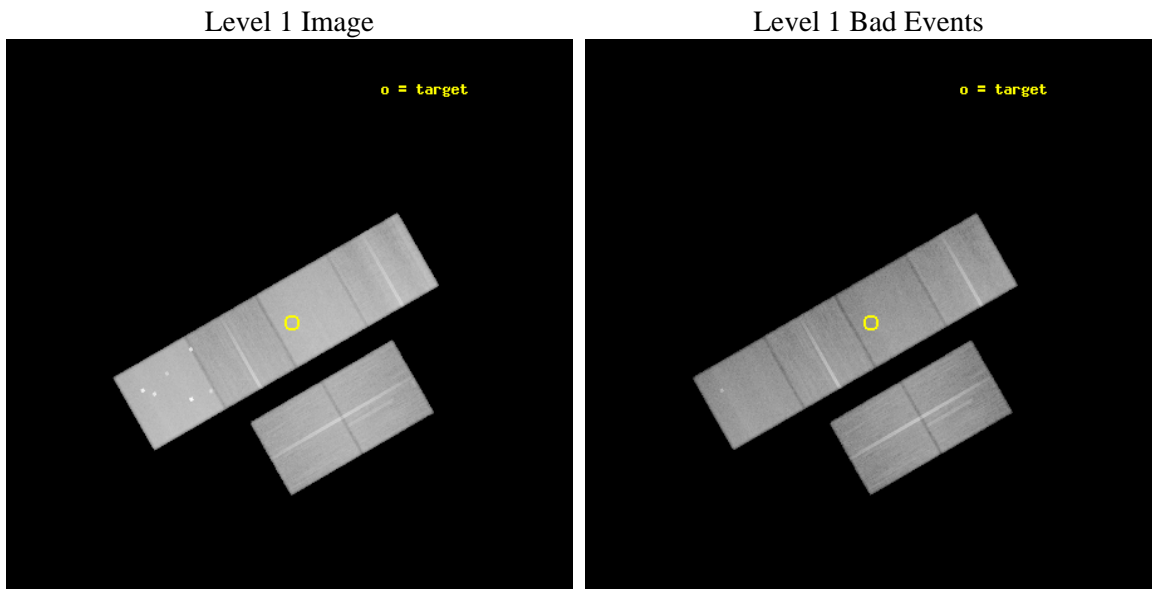
seq_num	600688	Sequence number
obs_id	9547	Observation id
title	Galaxies across the Octaves: A Chandra Legacy Survey of SINGS Galaxies	Proposal title
observer	Dr Leigh Jenkins	Principal investigator
object	NGC 24	Source name
dtcycle	0	
cycle	P	events from which exps? Prim/Second/Both
ra_targ	2.485417	Observer's specified target RA [deg]
dec_targ	-24.963333	Observer's specified target Dec [deg]
ra_nom	2.4907735111639	Nominal RA [deg]
dec_nom	-24.963177573836	Nominal Dec [deg]
roll_nom	330.15888619213	Nominal Roll [deg]
revision	2	Processing version of data
ontime	43779.199836969	Sum of GTIs [s]
livetime	43224.841247964	Livetime [s]
ontime2	43775.958806634	Sum of GTIs [s]
ontime3	43779.199836969	Sum of GTIs [s]
ontime5	43779.199836969	Sum of GTIs [s]
ontime6	43779.199836969	Sum of GTIs [s]
ontime7	43779.199836969	Sum of GTIs [s]
ontime8	43779.199836969	Sum of GTIs [s]
l2events	723472	Number of level 2 events



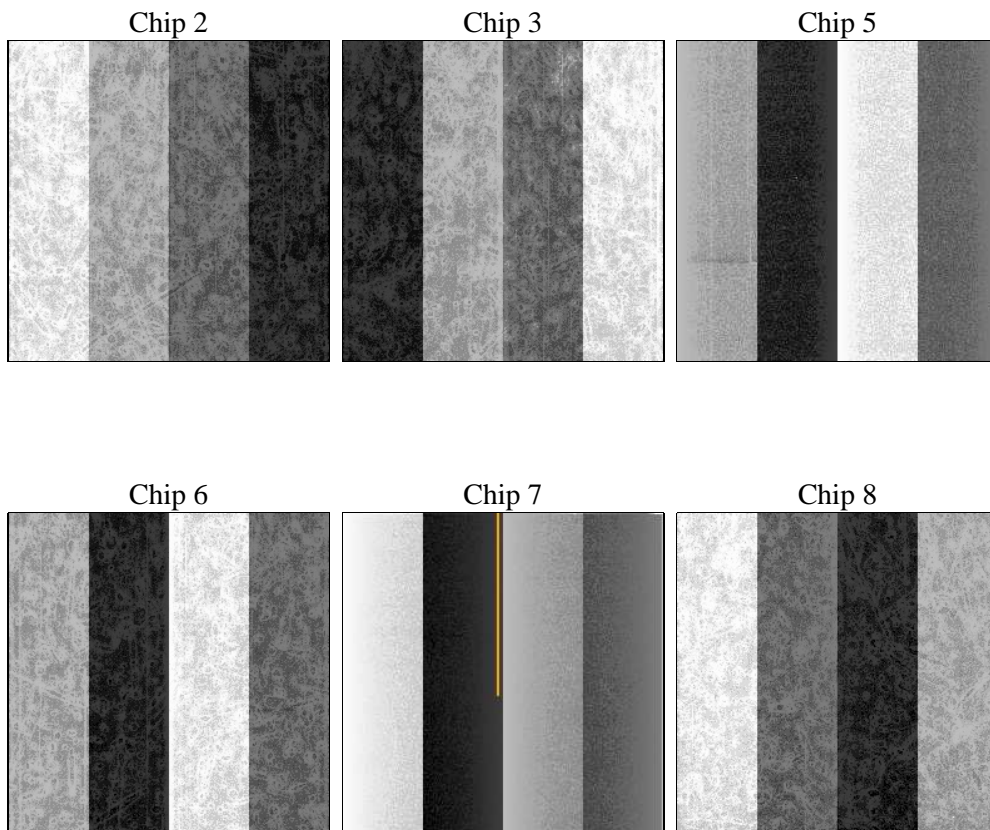
2 OBI

2.1 OBI

2.1.1 Images



2.1.2 Bias



2.1.3 Parameters

obi_num	0	Obi number	sched_exp_time	43600.000000	[s] Scheduled observation exposure time
ascdsver	8.4.4	Processing system revision	ontime	43779.199836969	Sum of GTIs [s]
caldbver	4.4.9	 	ontime2	43775.958806634	Sum of GTIs [s]
date	2012-05-22T22:59:43	Date and time of file creation	ontime3	43779.199836969	Sum of GTIs [s]
revision	2	Processing version of data	ontime5	43779.199836969	Sum of GTIs [s]
			ontime6	43779.199836969	Sum of GTIs [s]
			ontime7	43779.199836969	Sum of GTIs [s]
			ontime8	43779.199836969	Sum of GTIs [s]
			l1events	3211576	Number of level 1 events

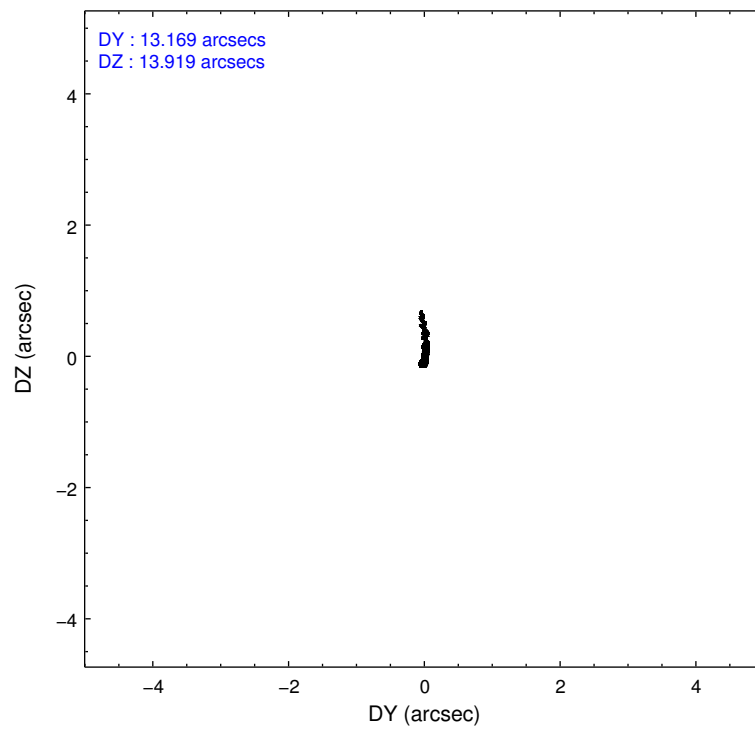
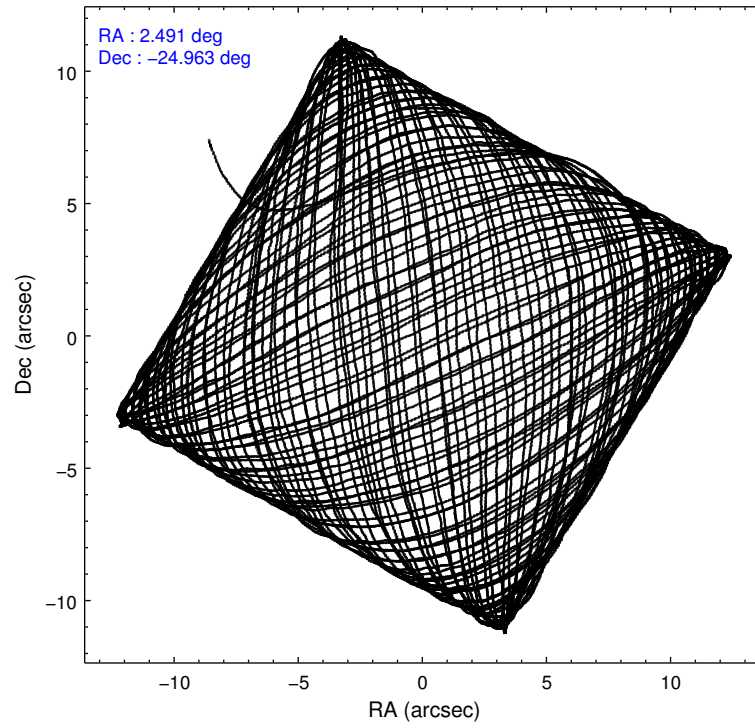
2.1.4 Events

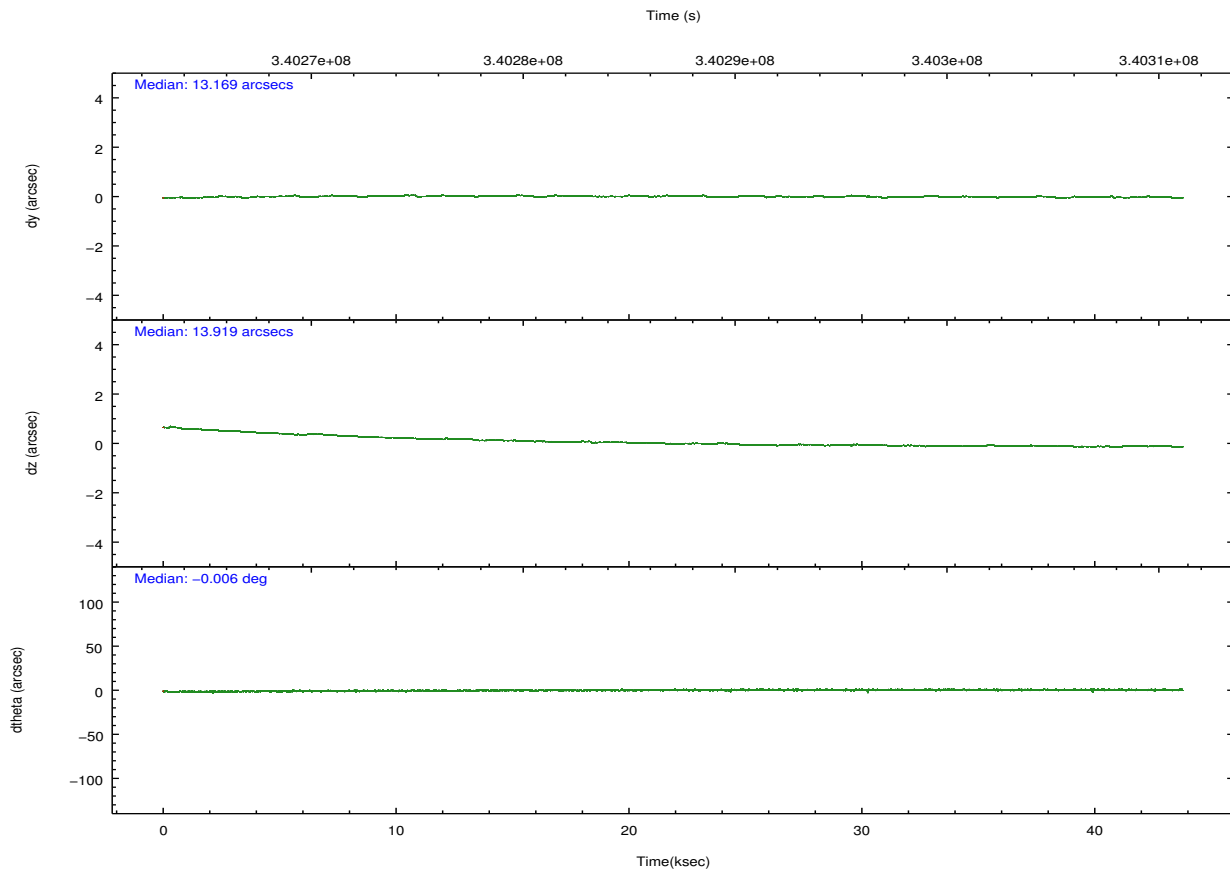
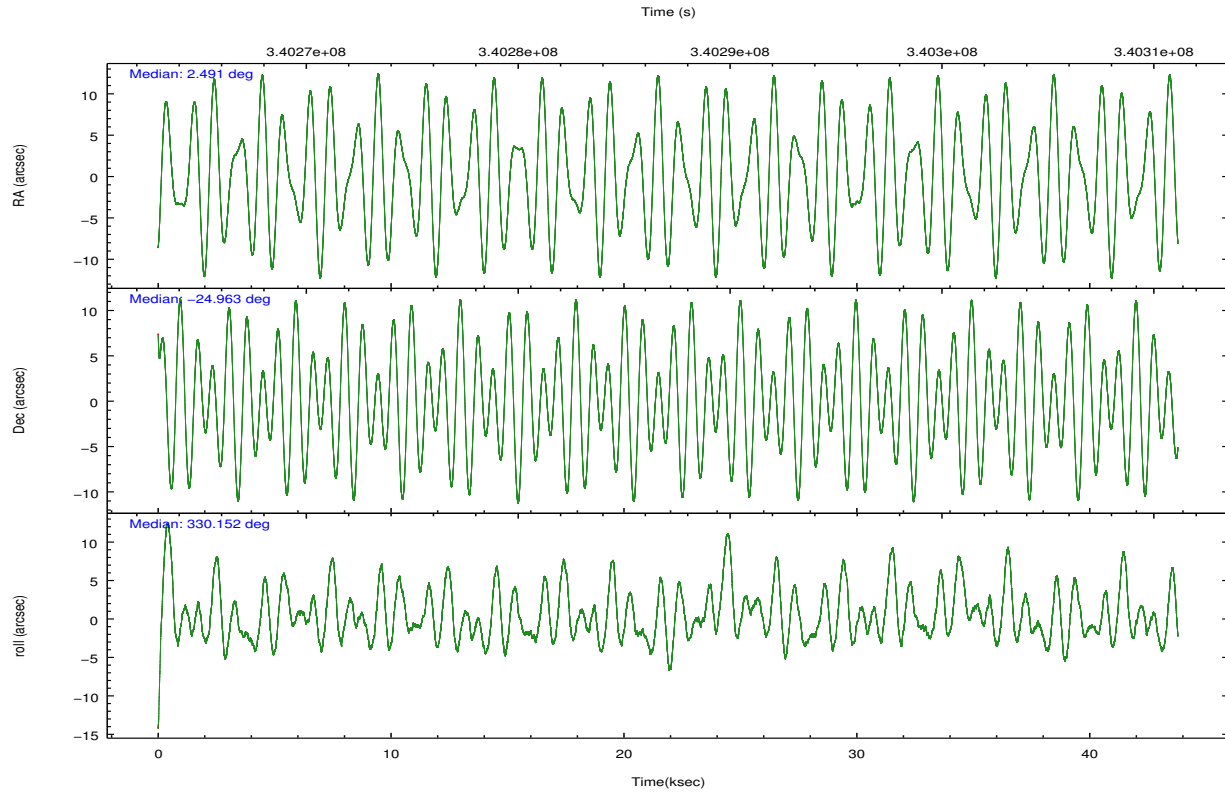
	ccd 2	ccd 3	ccd 5	ccd 6	ccd 7	ccd 8		ccd 2	ccd 3	ccd 5	ccd 6	ccd 7	ccd 8
level 1 events	449844	433157	708409	443045	617223	559898	grade 0 events	21401	23021	42352	20598	21928	40571
rejected events	399608	381658	381783	390559	367071	435156		4%	5%	5%	4%	3%	7%
rejected %	88%	88%	53%	88%	59%	77%	grade 1 events	303	296	1100	256	650	402
								0%	0%	0%	0%	0%	0%
							grade 2 events	11324	10478	100956	11848	52712	28711
								2%	2%	14%	2%	8%	5%
							grade 3 events	4846	4893	11136	5006	21377	13456
								1%	1%	1%	1%	3%	2%
							grade 4 events	4847	4961	10765	4952	21327	12603
								1%	1%	1%	1%	3%	2%
							grade 5 events	18326	20945	48601	21158	58586	28079
								4%	4%	6%	4%	9%	5%
							grade 6 events	8881	9246	168210	11163	138169	32147
								1%	2%	23%	2%	22%	5%
							grade 7 events	379916	359317	325289	368064	302474	403929
								84%	82%	45%	83%	49%	72%

2.2 Compared Parameters

Parameter	Planned	Actual	Parameter	Planned	Actual
Instrument	ACIS	ACIS	Obspar format version number	7	7
Detector	ACIS-235678	ACIS-235678	Obspar file type	PREDICTED	ACTUAL
Grating	NONE	NONE	Obspar update status	NONE	UPDATED
Data mode	FAINT	FAINT	CCD I0 on	N	N
Observation mode	POINTING	POINTING	CCD I1 on	N	N
[deg] Pointing RA	2.460614	2.490773511163866	CCD I2 on	O1	Y
[deg] Pointing Dec	-24.963621	-24.96317757383552	CCD I3 on	O2	Y
[deg] Pointing Roll	329.989532	330.1588861921302	CCD S0 on	N	N
[mm] SIM focus pos	-0.684267	-0.6828225247311905	CCD S1 on	Y	Y
[mm] SIM defocus	0	0.001444936568705701	CCD S2 on	Y	Y
[mm] SIM translation stage pos	-190.132523	-190.1425803651734	CCD S3 on	Y	Y
[mm] SIM translation stage offset	0	0.01005778216563158	CCD S4 on	Y	Y
[s] Observation start time (MET)	340265369.184000	340263833.50744	CCD S5 on	N	N
Observation start date	2008-10-13T06:08:24	2008-10-13T05:43:53	Number of optional ACIS chips dropped	0	0
[s] Observation end time (MET)	340308969.184000	340309867.79721	On-chip summing requested	N	N
Observation end date	2008-10-13T18:15:04	2008-10-13T18:31:07	Subarray requested	NONE	NONE
Read mode	TIMED	TIMED	Alternating exposures requested	N	N
			[s] Primary exposure time	0.000000	3.2

2.3 Aspect



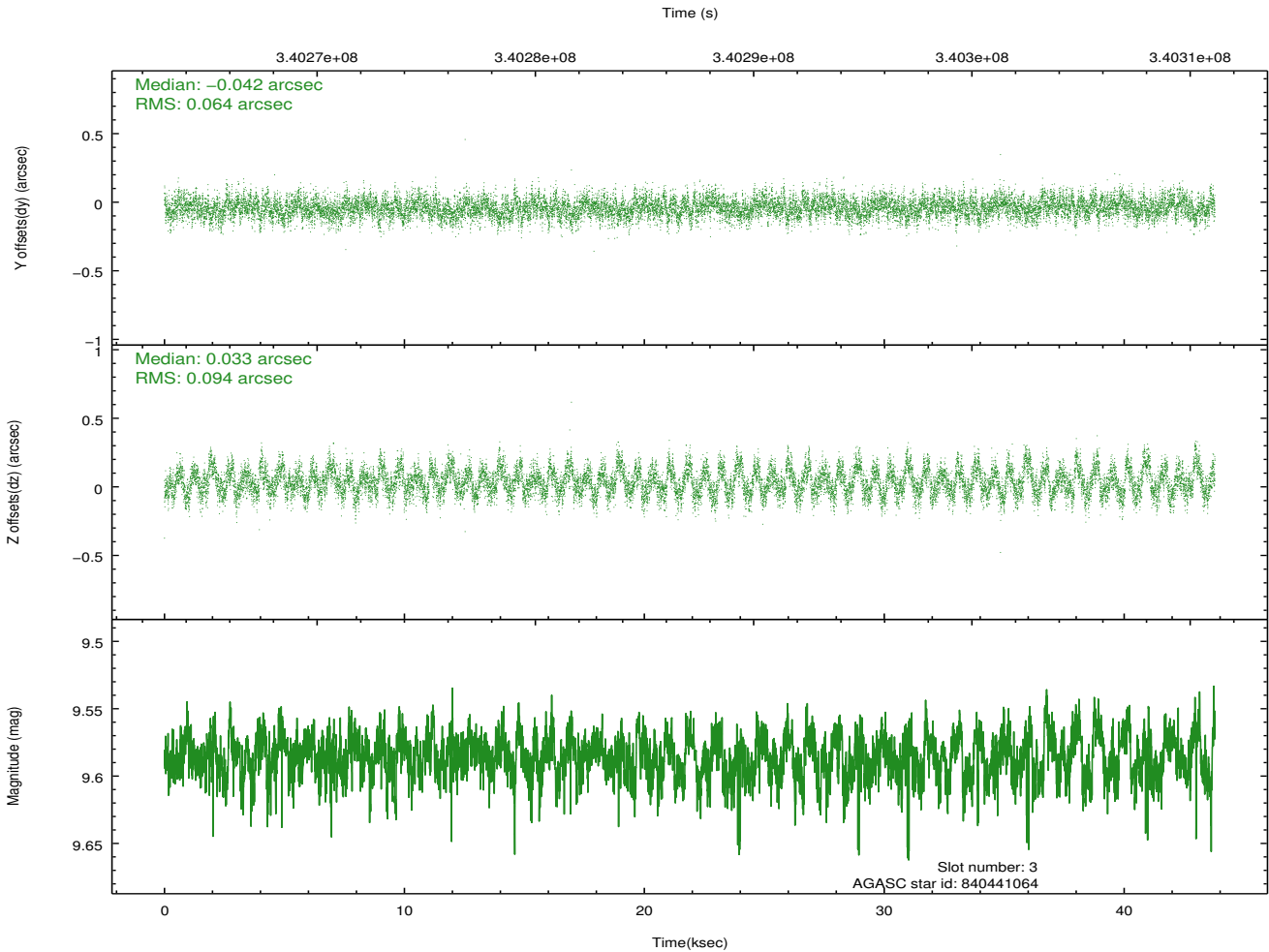
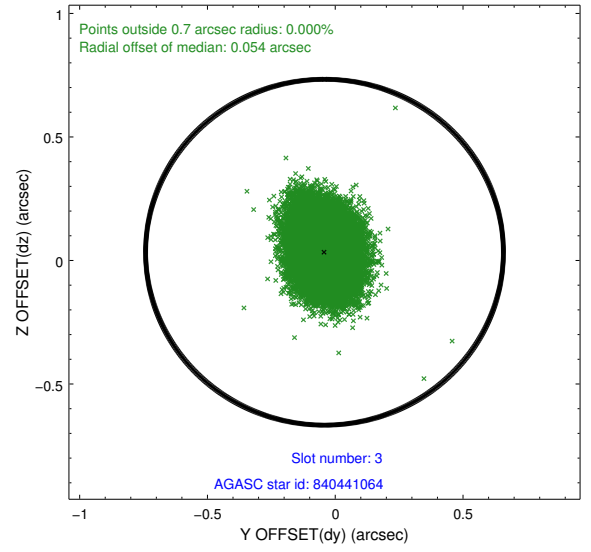
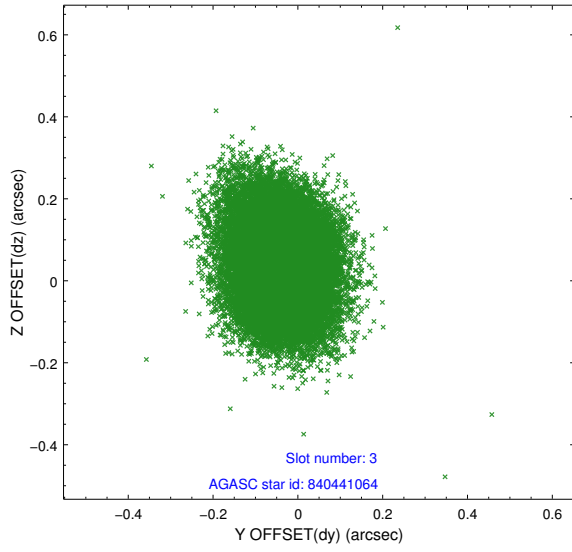


Slot Statistics

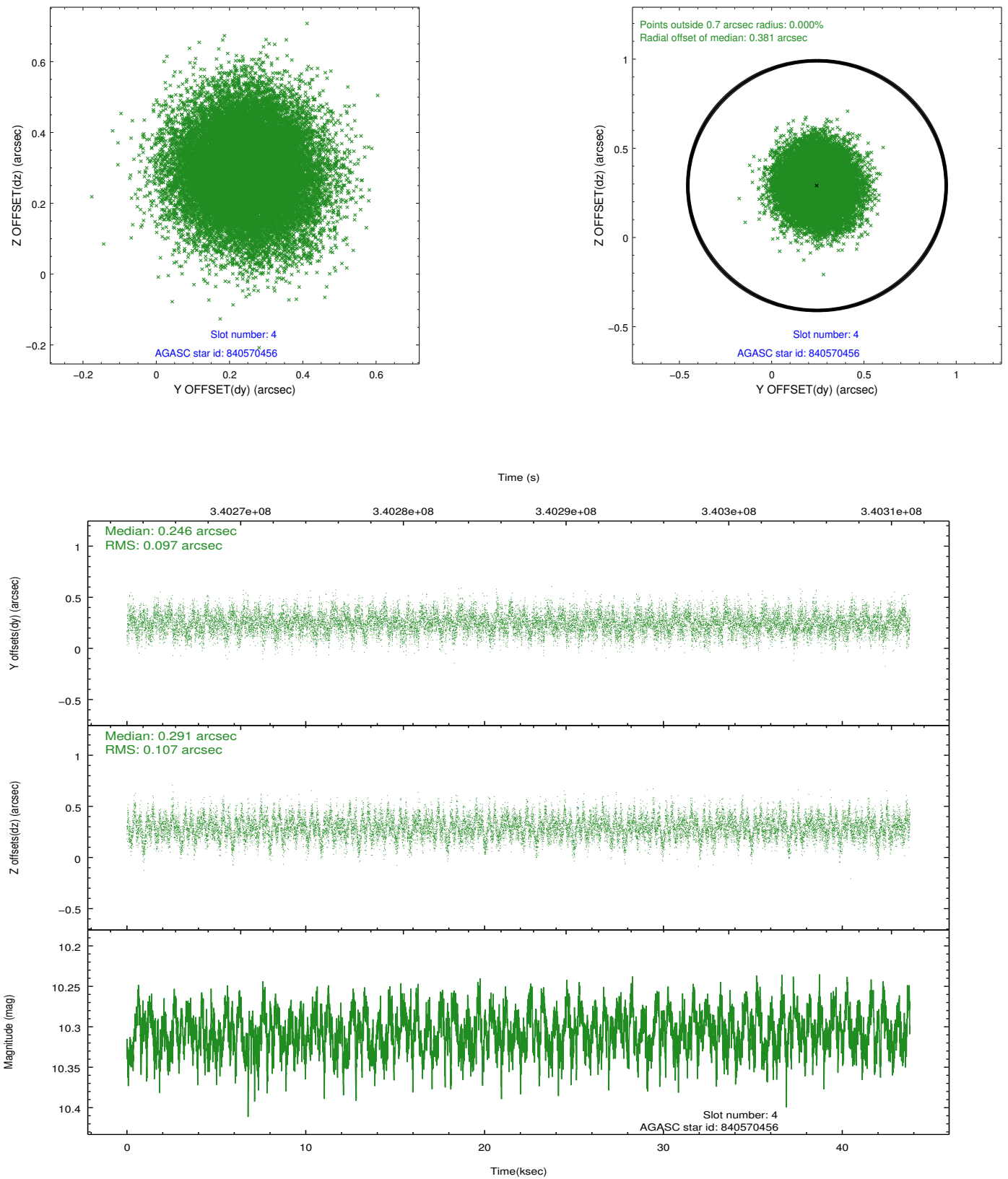
slot	status	id	mag	n_pts	med_dy	med_dz	dr1	dr2	ra	dec	mean_y	mean_z
0	FID	ACIS-S-1	7.02	10679	0.080	-0.034	0.007	0.012	0.000000	0.000000	930.04	-1730.96
1	FID	ACIS-S-5	7.05	10679	-0.133	0.059	0.008	0.013	0.000000	0.000000	-1819.18	166.67
2	FID	ACIS-S-6	7.15	10679	0.032	-0.013	0.010	0.019	0.000000	0.000000	395.53	810.58
3	GUIDE	840441064	9.59	21339	-0.042	0.033	0.121	0.196	2.411711	-24.385044	-1180.50	1723.37
4	GUIDE	840570456	10.31	21318	0.246	0.291	0.155	0.249	3.323291	-24.817157	2181.94	1859.36
5	GUIDE	840571592	10.13	21308	0.047	-0.034	0.217	0.341	3.265313	-24.954704	2263.02	1335.20
6	GUIDE	840573384	7.14	21358	-0.110	-0.206	0.078	0.146	2.999144	-24.566245	812.95	2117.63
7	GUIDE	840834872	7.24	21357	-0.134	-0.116	0.073	0.112	1.843938	-25.356645	-1024.86	-2232.75

2.4 Star Slots

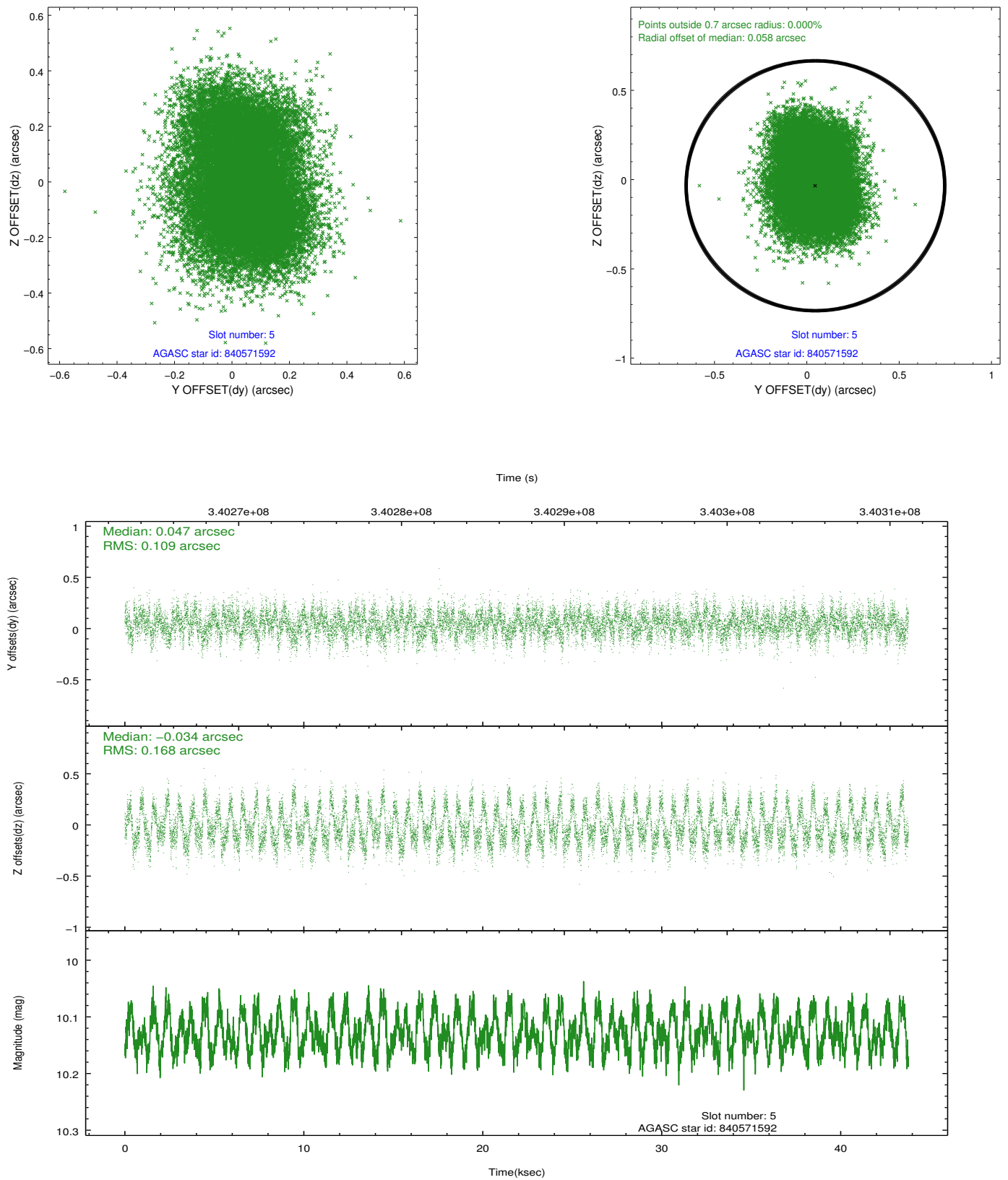
2.4.1 Slot 3



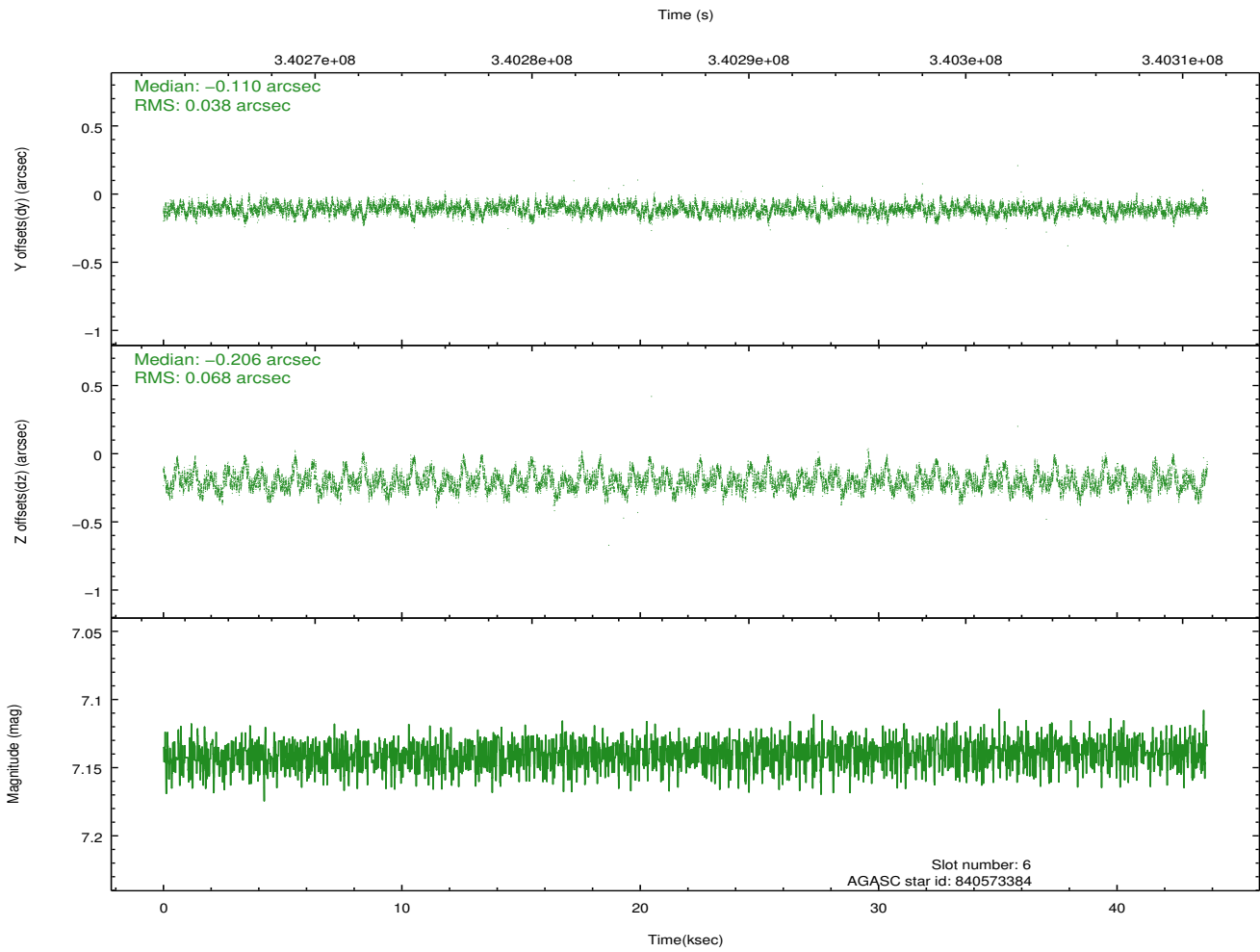
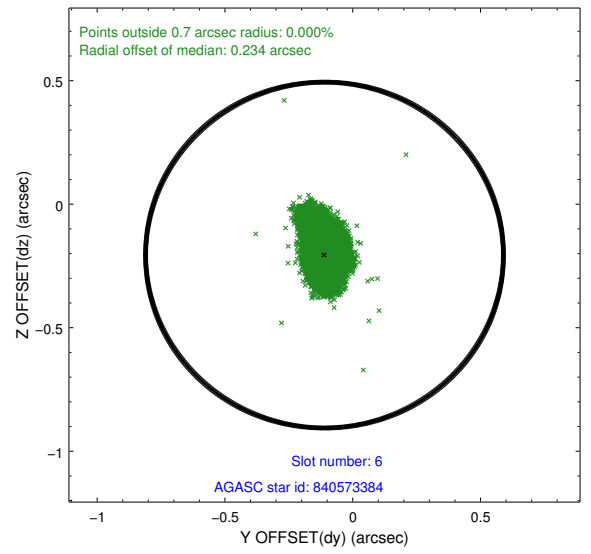
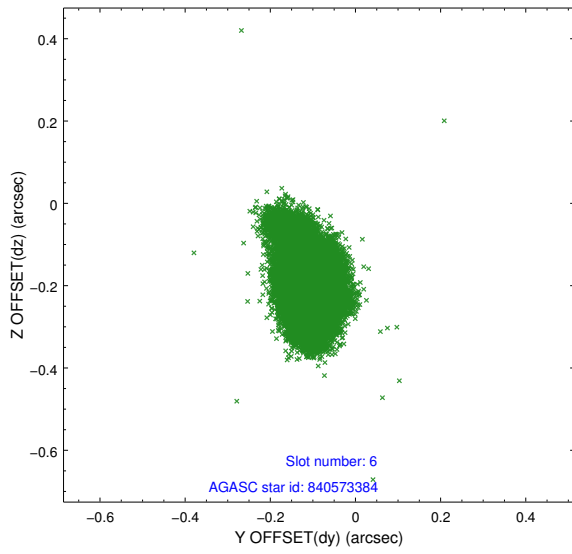
2.4.2 Slot 4



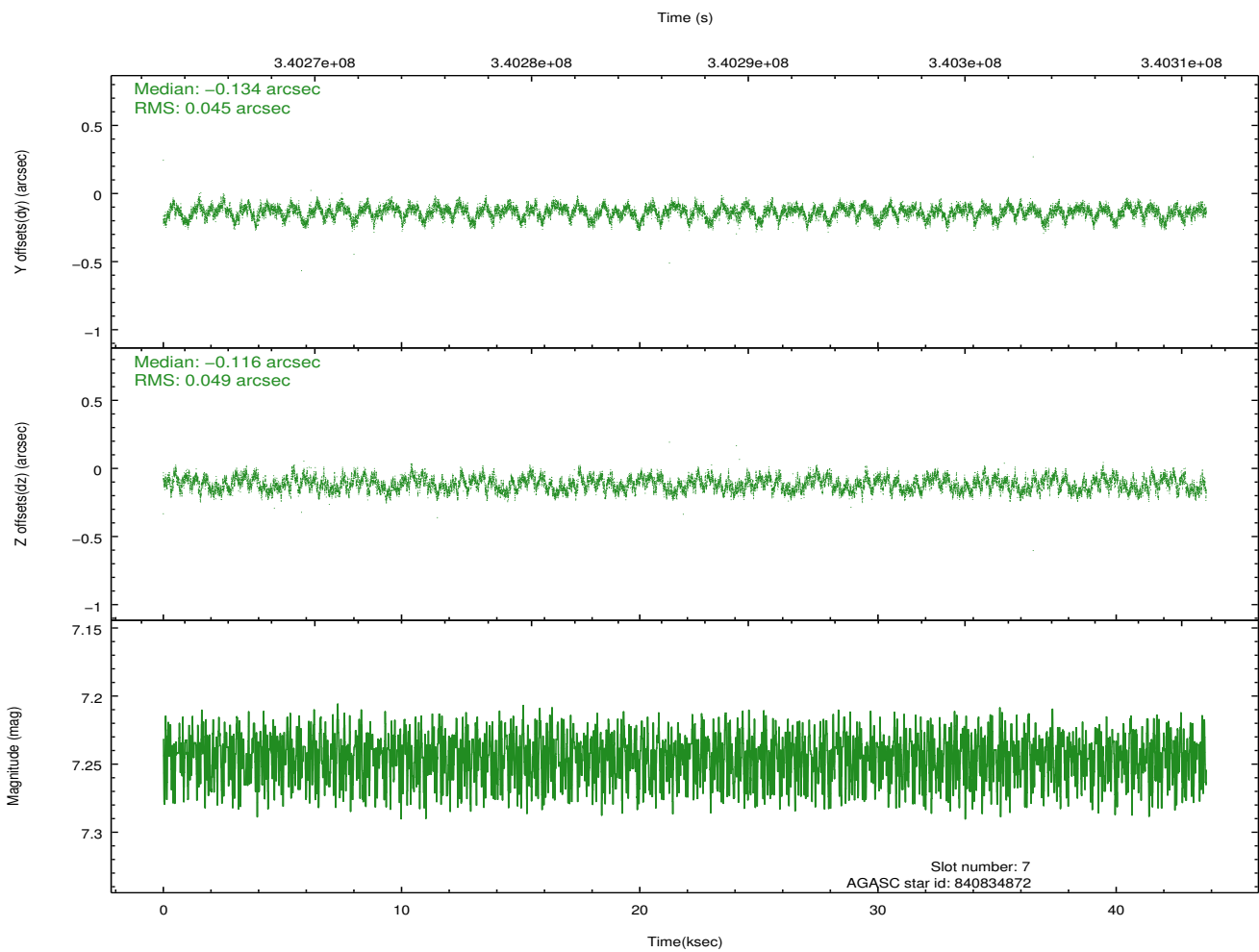
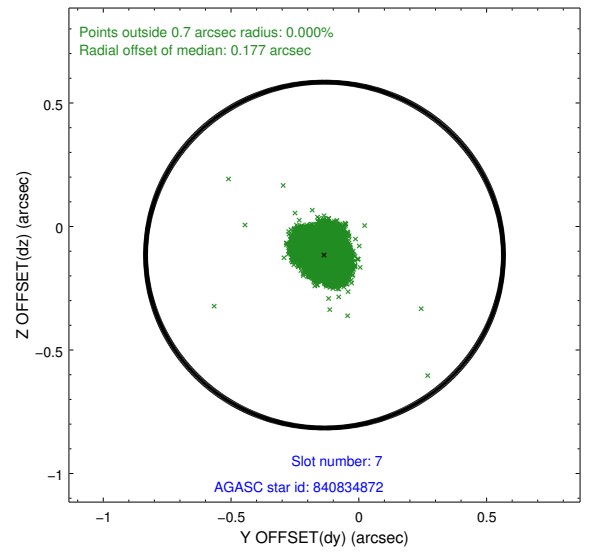
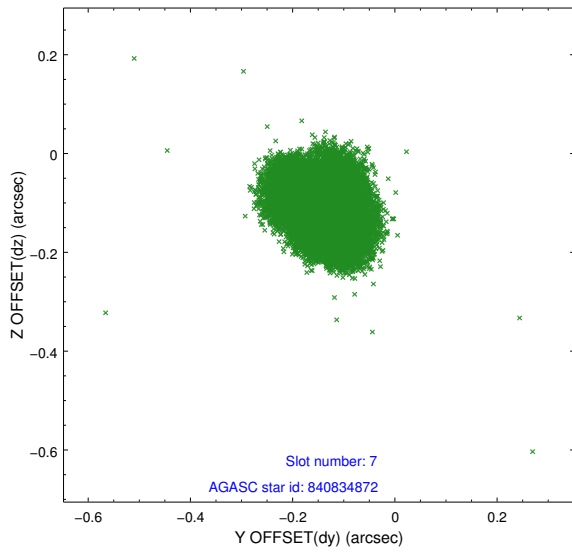
2.4.3 Slot 5



2.4.4 Slot 6

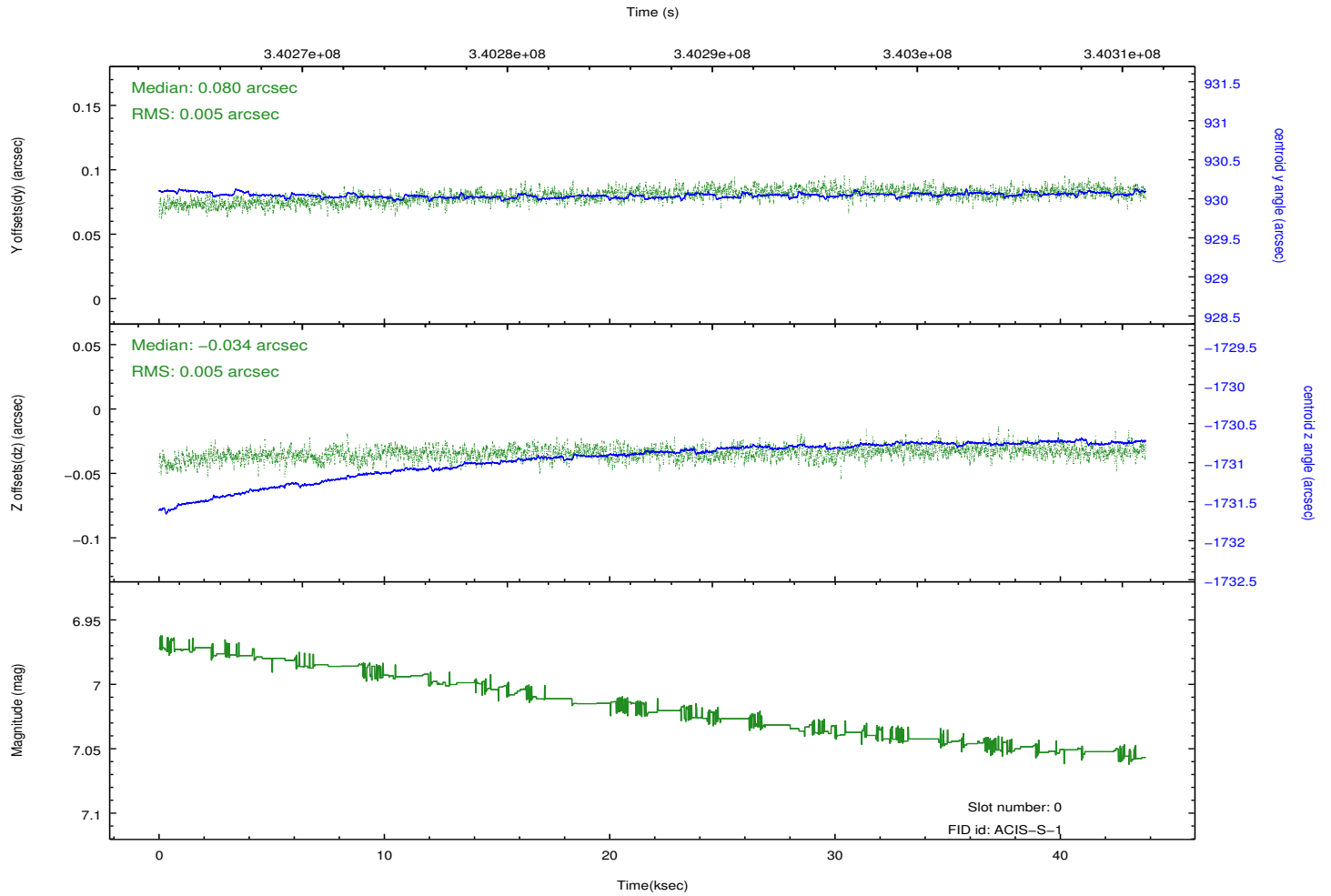
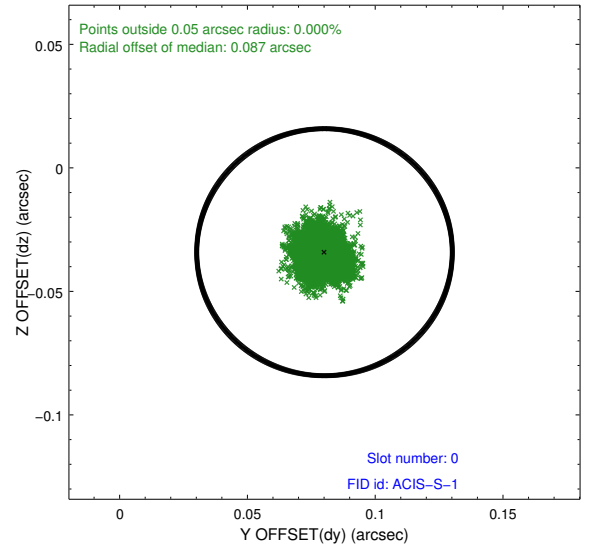
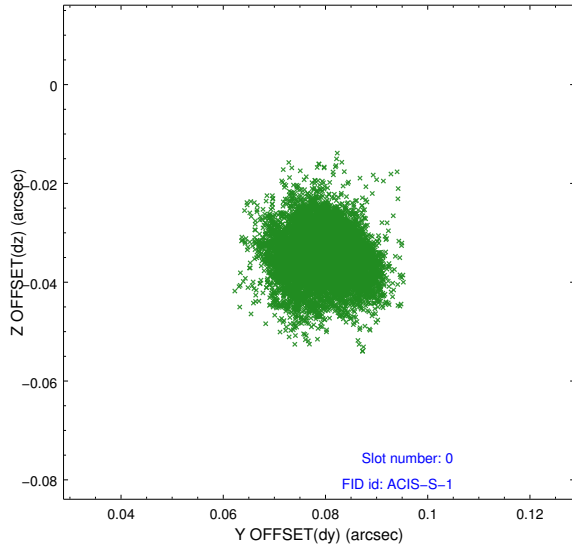


2.4.5 Slot 7

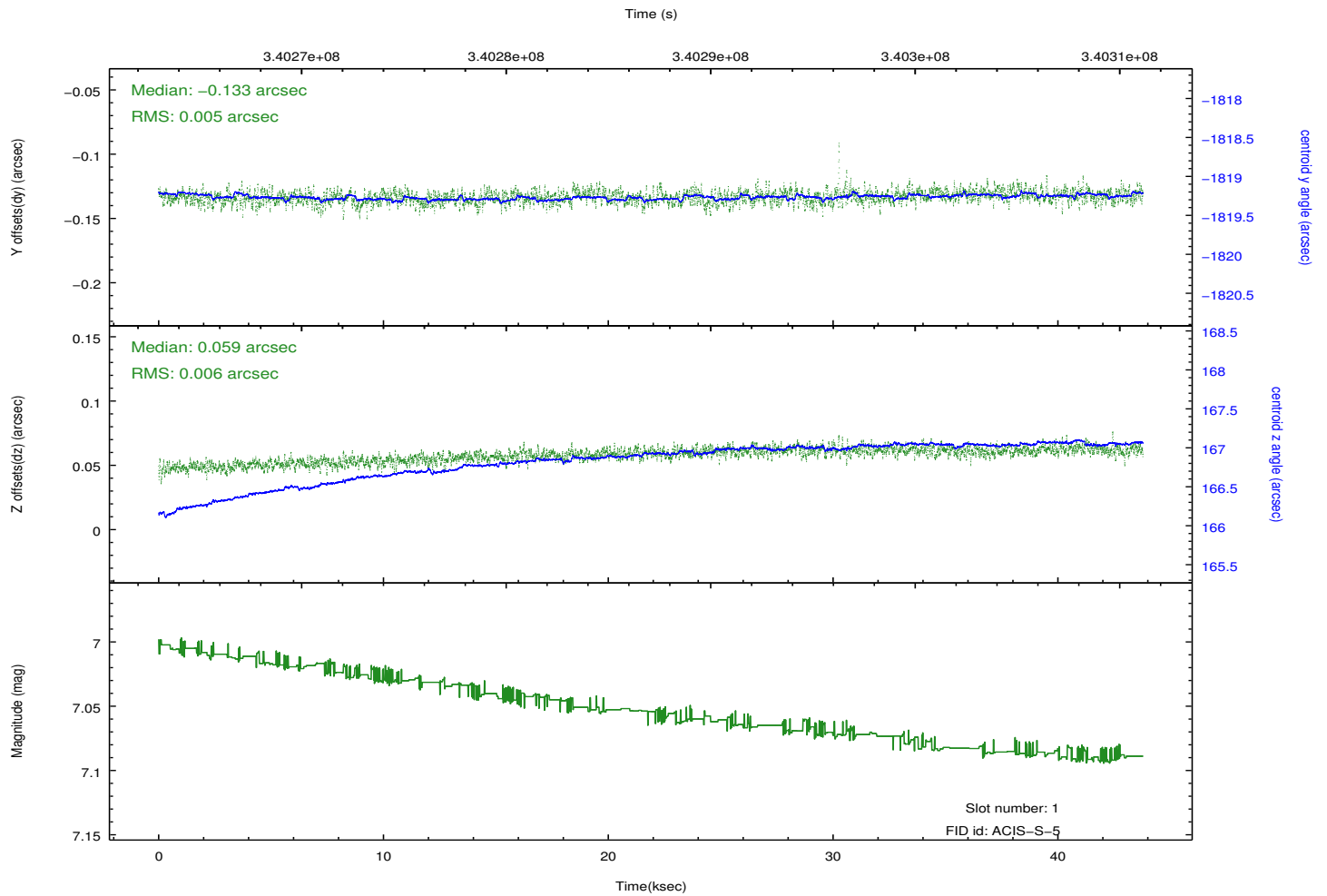
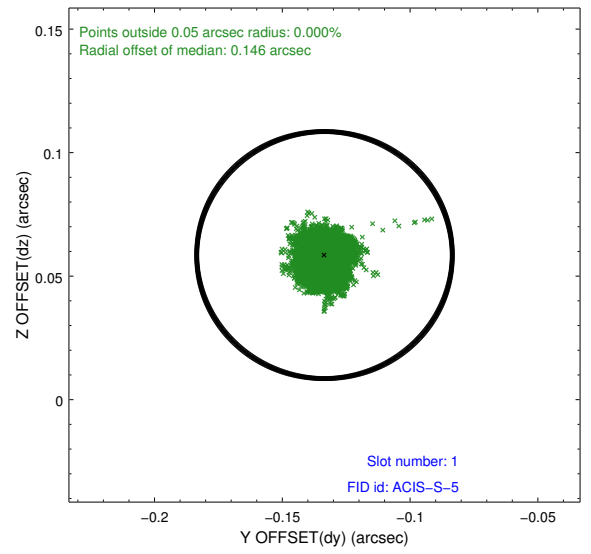
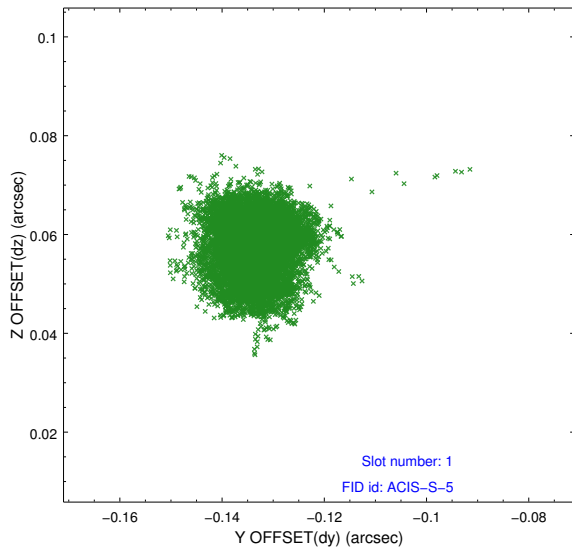


2.5 FID Slots

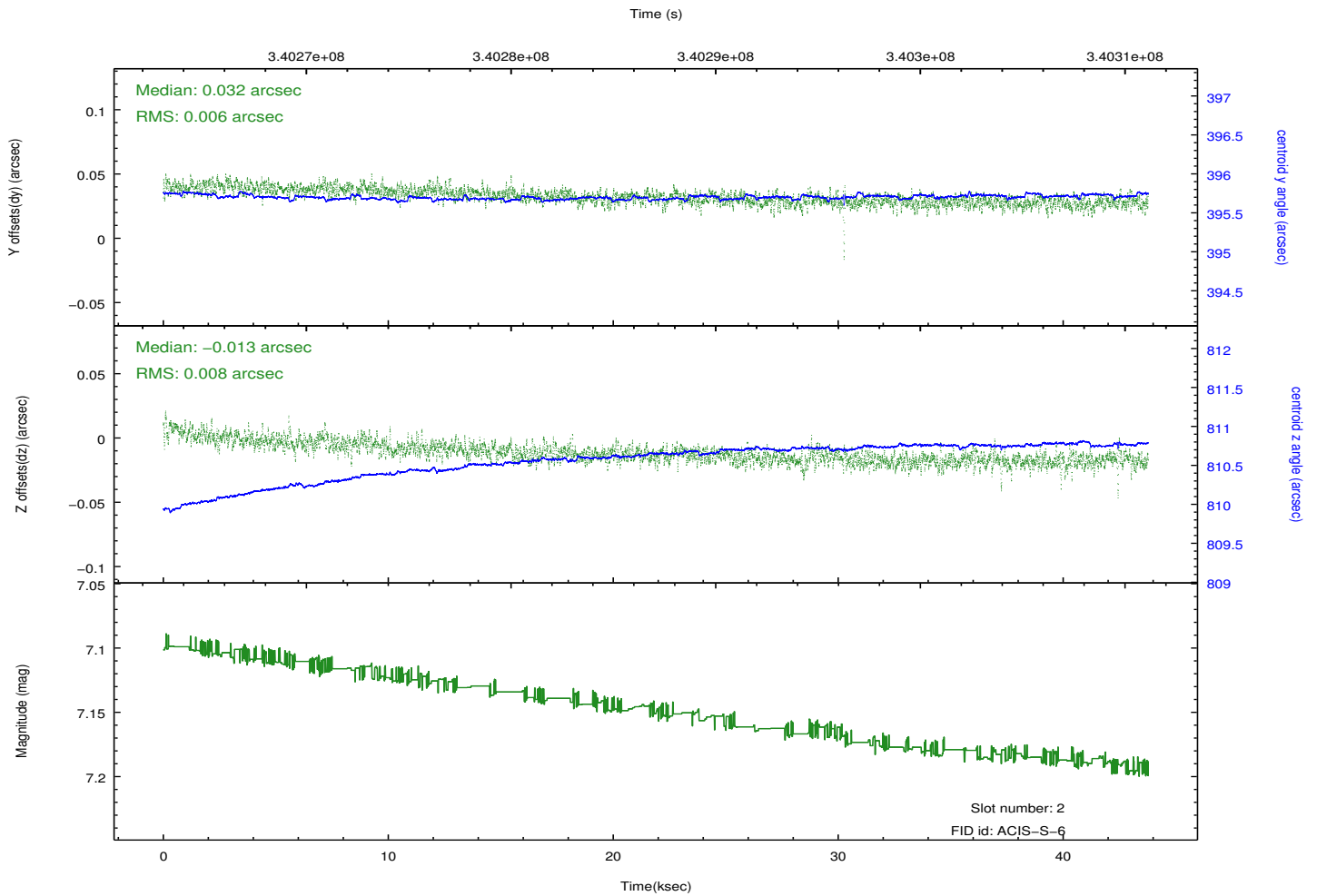
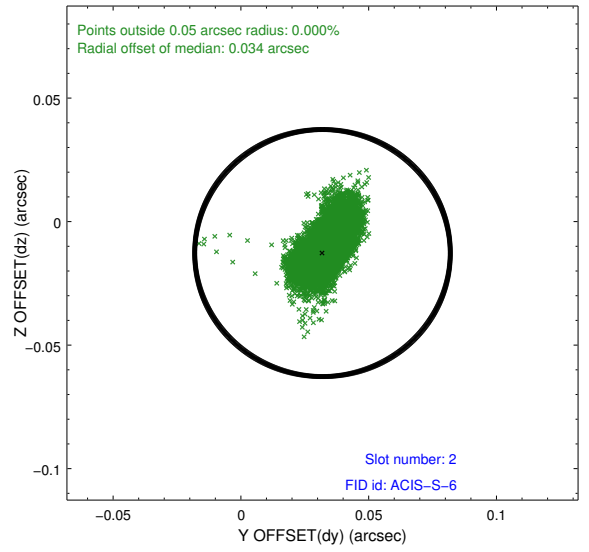
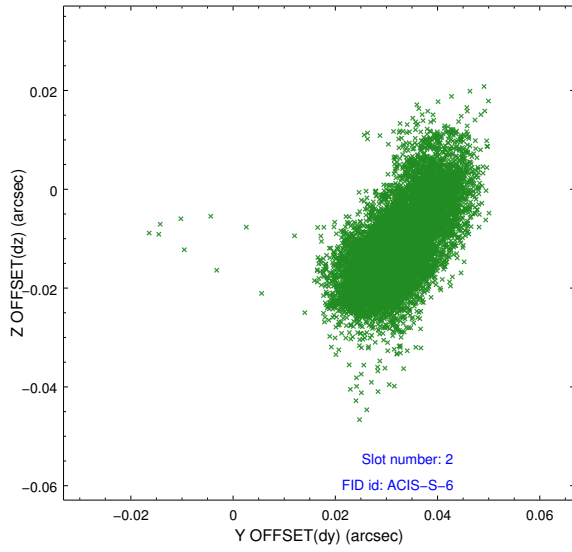
2.5.1 Slot 0



2.5.2 Slot 1



2.5.3 Slot 2



A Summary

A.1 Status

V&V Scientist	Beth Sundheim
V&V Date (YYYY-MM-DD)	2012.05.31
V&V Edition	1
V&V Disposition and Status	OK
V&V Charge Time	43.7791998

A.2 Comments