

V&V Reference Report

L2 ASCDS Version : 8.4.4

Observation 9597 - L2 Version 2
Chandra X-Ray Center

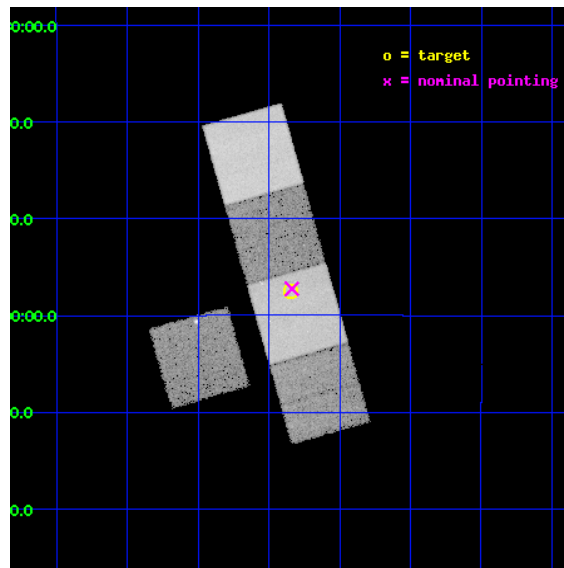
L2 Processing Date : Jun 1 2012

Contents

1	Front	2
2	OBI	3
2.1	OBI	3
2.1.1	Images	3
2.1.2	Bias	3
2.1.3	Parameters	4
2.1.4	Events	4
2.2	Compared Parameters	5
2.3	Aspect	6
2.4	Star Slots	9
2.4.1	Slot 3	9
2.4.2	Slot 4	10
2.4.3	Slot 5	11
2.4.4	Slot 6	12
2.4.5	Slot 7	13
2.5	FID Slots	14
2.5.1	Slot 0	14
2.5.2	Slot 1	15
2.5.3	Slot 2	16
A	Summary	17
A.1	Status	17
A.2	Comments	17

1 Front

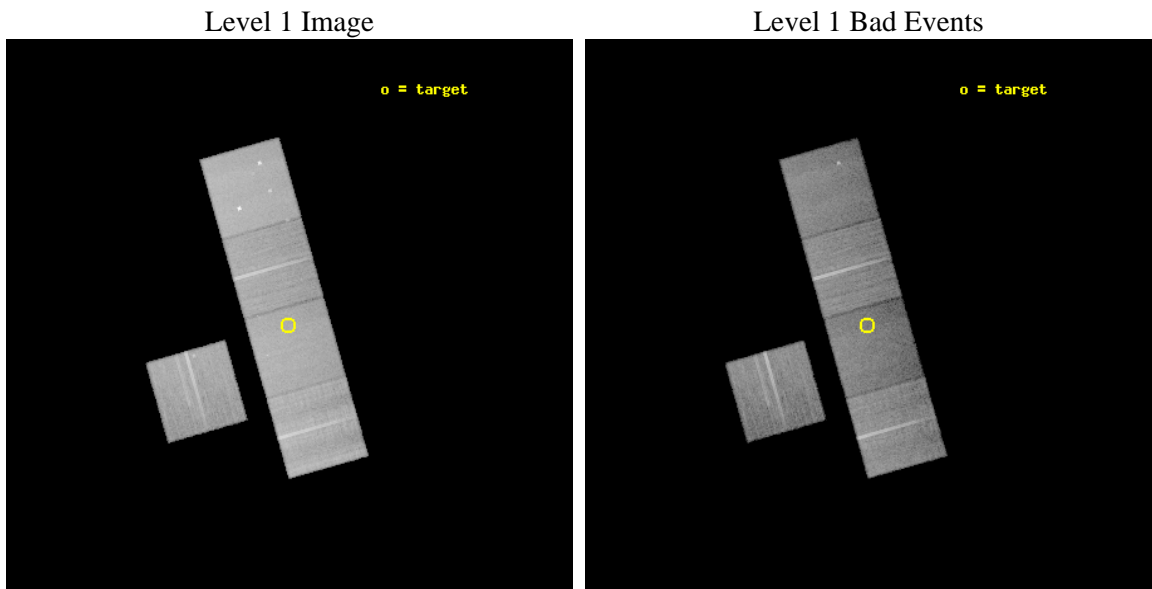
seq_num	300231	Sequence number
obs_id	9597	Observation id
title	A Chandra Legacy Survey of Dynamically Active Globular Clusters	Pr
observer	Prof. David Pooley	Principal investigator
object	NGC 6517	Source name
dtcycle	0	
cycle	P	events from which exps? Prim/Second/Both
ra_targ	270.460833	Observer's specified target RA [deg]
dec_targ	-8.958889	Observer's specified target Dec [deg]
ra_nom	270.45948379423	Nominal RA [deg]
dec_nom	-8.9541925885084	Nominal Dec [deg]
roll_nom	74.156412063323	Nominal Roll [deg]
revision	2	Processing version of data
ontime	23931.623645842	Sum of GTIs [s]
livetime	23618.939364704	Livetime [s]
ontime3	23931.500525832	Sum of GTIs [s]
ontime5	23931.582605839	Sum of GTIs [s]
ontime6	23931.541565835	Sum of GTIs [s]
ontime7	23931.623645842	Sum of GTIs [s]
ontime8	23931.459485829	Sum of GTIs [s]
l2events	295849	Number of level 2 events



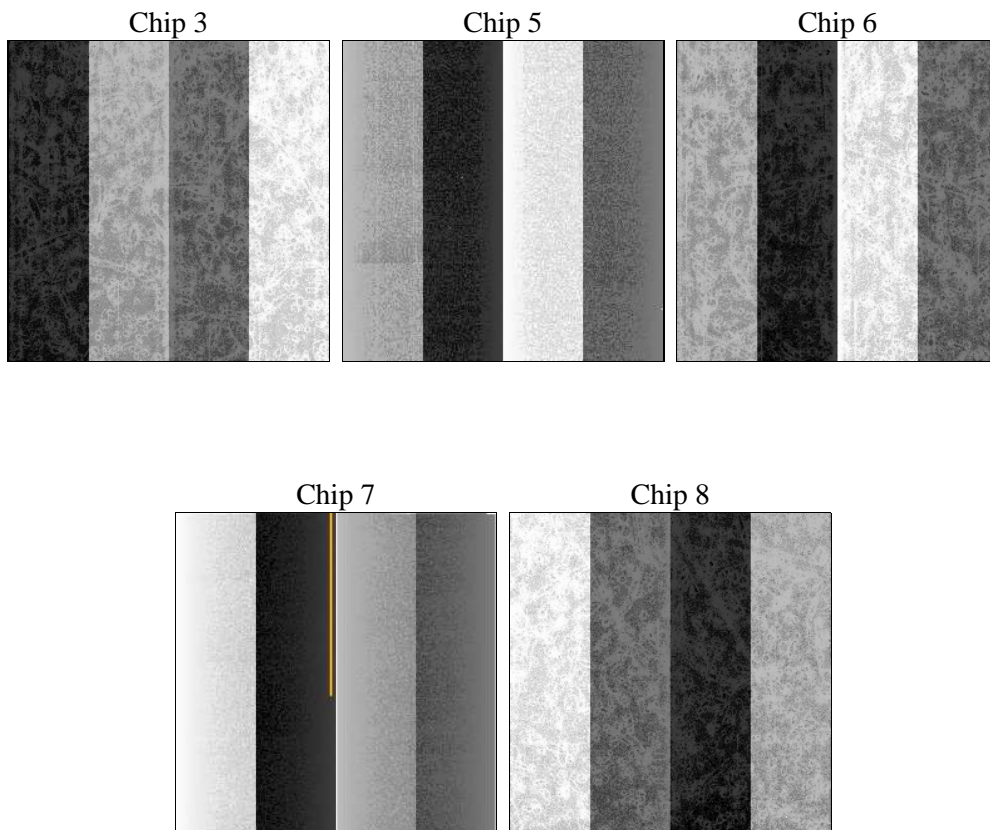
2 OBI

2.1 OBI

2.1.1 Images



2.1.2 Bias



2.1.3 Parameters

obi_num	0	Obi number	sched_exp_time	23900.000000	[s] Scheduled observation exposure time
ascdsver	8.4.4	Processing system revision	ontime	23931.623645842	Sum of GTIs [s]
caldbver	4.4.9	 	ontime3	23931.500525832	Sum of GTIs [s]
date	2012-06-01T09:18:15	Date and time of file creation	ontime5	23931.582605839	Sum of GTIs [s]
revision	2	Processing version of data	ontime6	23931.541565835	Sum of GTIs [s]
			ontime7	23931.623645842	Sum of GTIs [s]
			ontime8	23931.459485829	Sum of GTIs [s]
			l1events	1186733	Number of level 1 events

2.1.4 Events

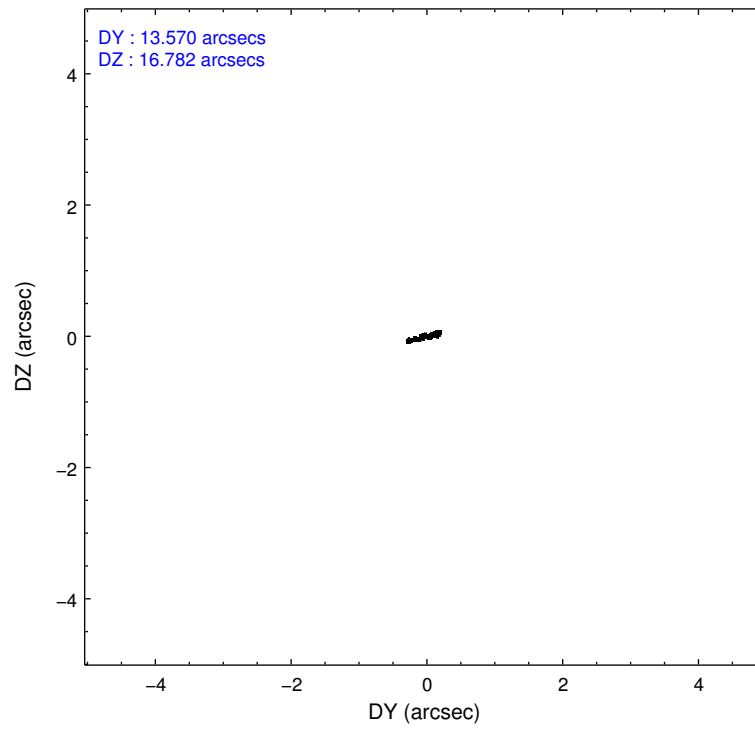
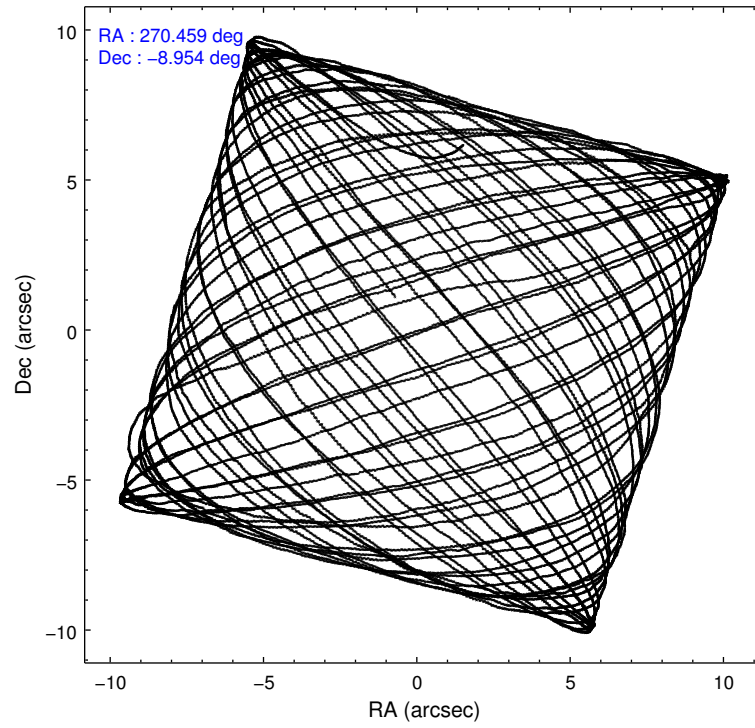
	ccd 3	ccd 5	ccd 6	ccd 7	ccd 8
level 1 events	198704	290435	205102	231635	260857
rejected events	179353	144725	183728	126248	194183
rejected %	90%	49%	89%	54%	74%

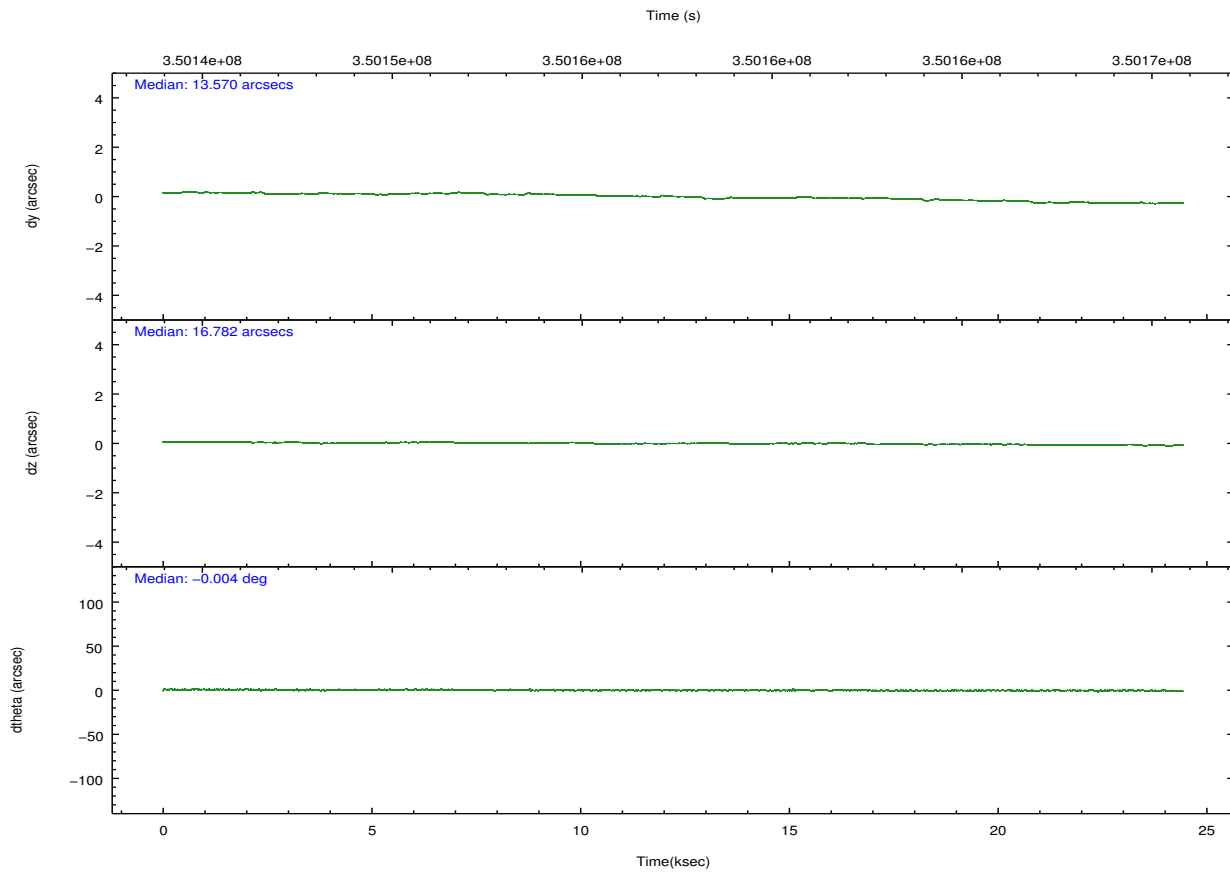
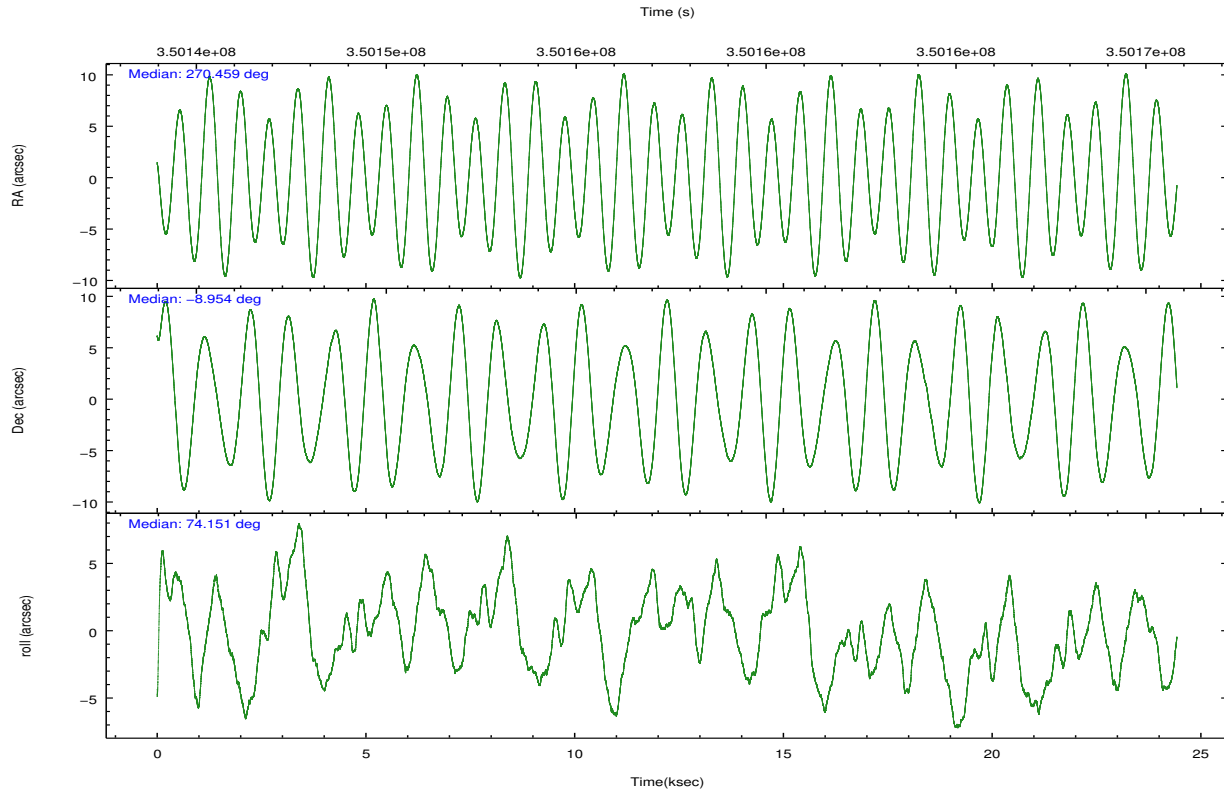
	ccd 3	ccd 5	ccd 6	ccd 7	ccd 8
grade 0 events	7050	15822	7434	9747	19881
	3%	5%	3%	4%	7%
grade 1 events	119	548	99	325	213
	0%	0%	0%	0%	0%
grade 2 events	4169	42931	4792	21629	15580
	2%	14%	2%	9%	5%
grade 3 events	2195	6443	2302	9562	7093
	1%	2%	1%	4%	2%
grade 4 events	2200	5523	2286	9375	6404
	1%	1%	1%	4%	2%
grade 5 events	8135	23049	8269	23911	12259
	4%	7%	4%	10%	4%
grade 6 events	3740	75033	4563	55101	17733
	1%	25%	2%	23%	6%
grade 7 events	171096	121086	175357	101985	181694
	86%	41%	85%	44%	69%

2.2 Compared Parameters

Parameter	Planned	Actual	Parameter	Planned	Actual
Instrument	ACIS	ACIS	Obspar format version number	7	7
Detector	ACIS-35678	ACIS-35678	Obspar file type	PREDICTED	ACTUAL
Grating	NONE	NONE	Obspar update status	NONE	UPDATED
Data mode	VFAINT	VFAINT	CCD I0 on	N	N
Observation mode	POINTING	POINTING	CCD I1 on	N	N
[deg] Pointing RA	270.466630	270.4594837942343	CCD I2 on	O1	N
[deg] Pointing Dec	-8.980641	-8.954192588508377	CCD I3 on	O2	Y
[deg] Pointing Roll	74.000908	74.15641206332343	CCD S0 on	N	N
[mm] SIM focus pos	-0.684267	-0.6828225247311905	CCD S1 on	Y	Y
[mm] SIM defocus	0	0.001444936568705701	CCD S2 on	Y	Y
[mm] SIM translation stage pos	-190.132523	-190.1425803651734	CCD S3 on	Y	Y
[mm] SIM translation stage offset	0	0.01005778216563158	CCD S4 on	Y	Y
[s] Observation start time (MET)	350145710.184000	350144609.00815	CCD S5 on	N	N
Observation start date	2009-02-04T14:40:44	2009-02-04T14:23:29	Number of optional ACIS chips dropped	1	1
[s] Observation end time (MET)	350169610.184000	350170879.75946	On-chip summing requested	N	N
Observation end date	2009-02-04T21:19:04	2009-02-04T21:41:19	Subarray requested	NONE	NONE
Read mode	TIMED	TIMED	Alternating exposures requested	N	N
			[s] Primary exposure time	0.000000	3.1

2.3 Aspect



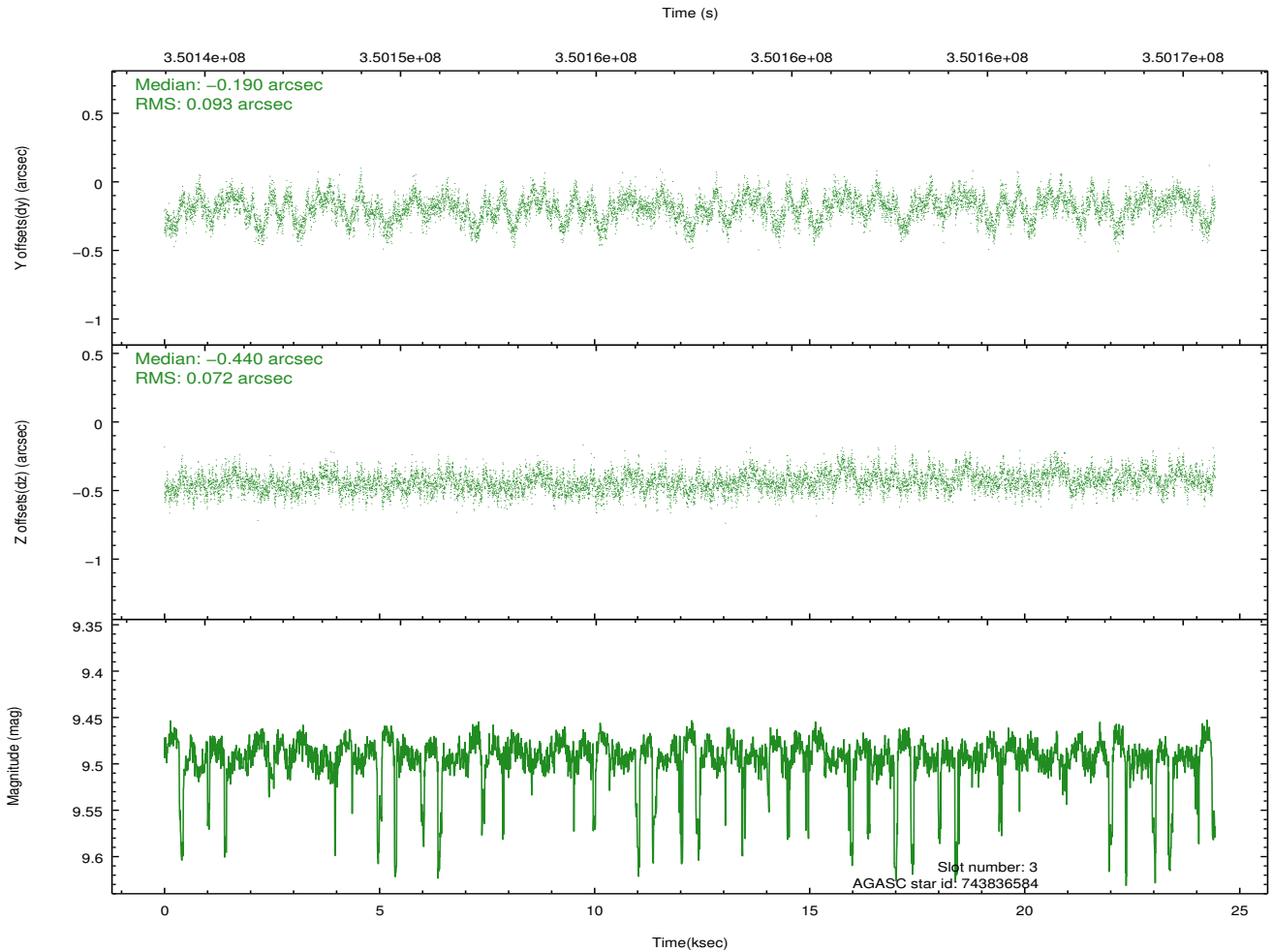
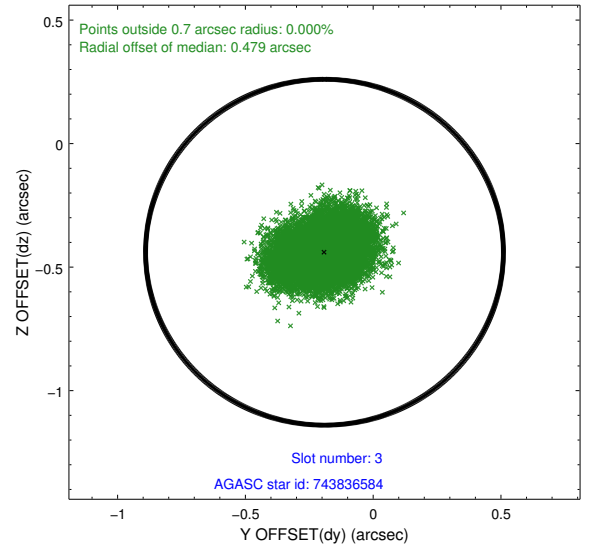
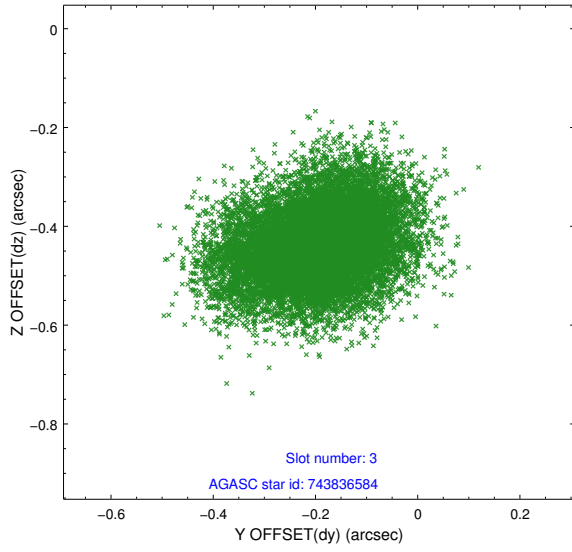


Slot Statistics

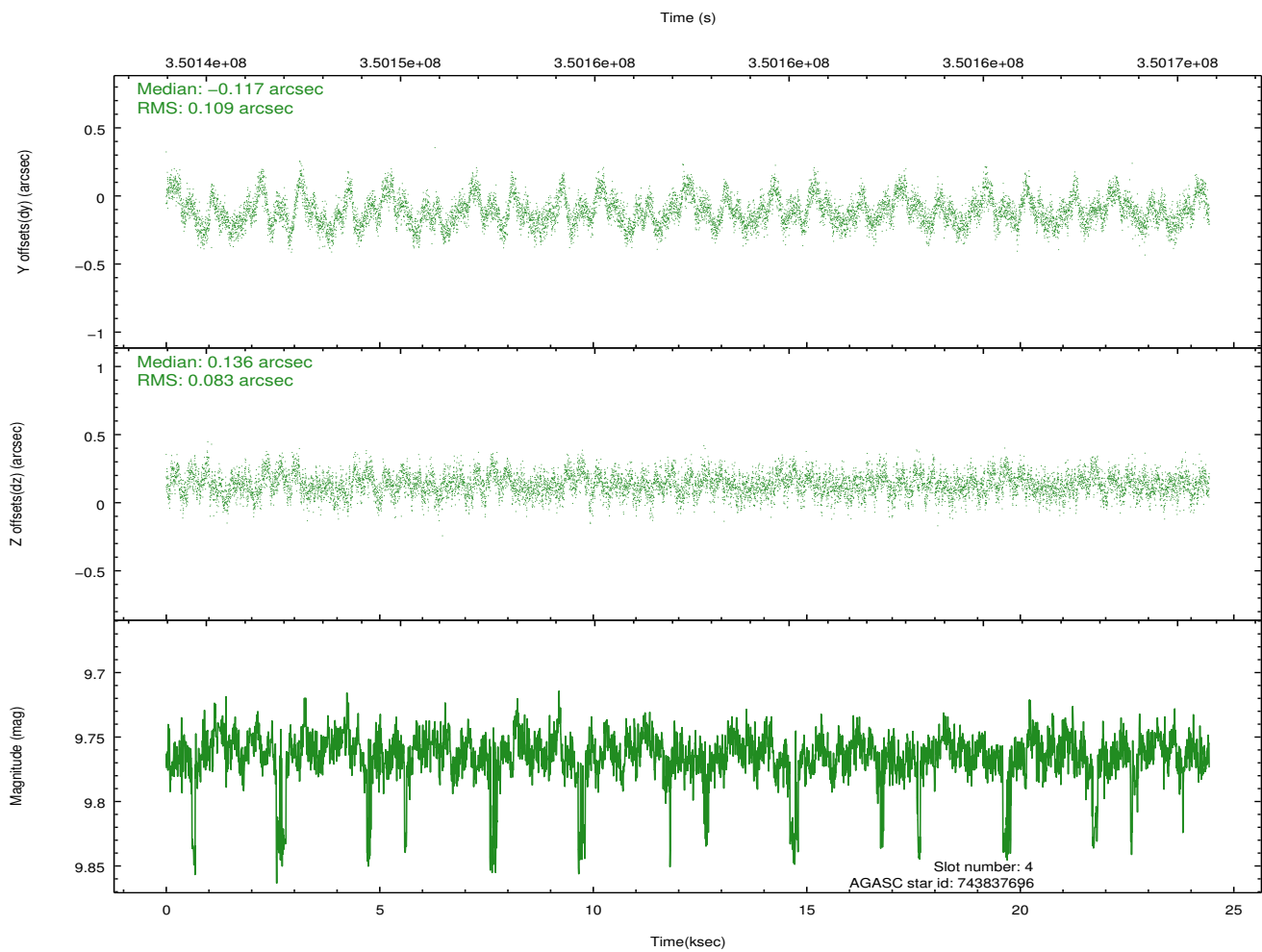
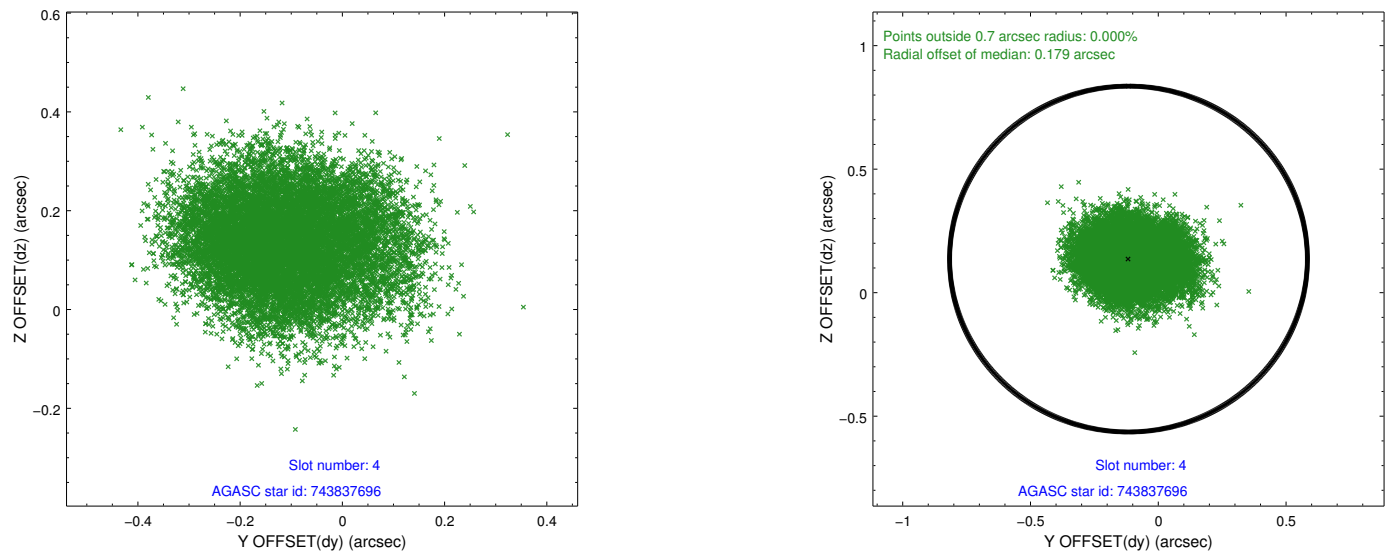
slot	status	id	mag	n_pts	med_dy	med_dz	dr1	dr2	ra	dec	mean_y	mean_z
0	FID	ACIS-S-2	6.88	5958	-0.027	-0.019	0.009	0.016	0.000000	0.000000	-766.52	-1738.17
1	FID	ACIS-S-4	6.96	5958	0.156	0.018	0.009	0.016	0.000000	0.000000	2146.89	170.20
2	FID	ACIS-S-5	6.99	5958	-0.161	0.010	0.010	0.016	0.000000	0.000000	-1819.32	164.04
3	GUIDE	743836584	9.49	11815	-0.190	-0.440	0.127	0.204	270.037787	-8.284616	1986.78	2158.87
4	GUIDE	743837696	9.76	11887	-0.117	0.136	0.147	0.234	271.010457	-8.848608	989.19	-1728.20
5	GUIDE	743837936	9.35	11863	0.006	-0.042	0.104	0.165	270.667023	-8.752236	987.26	-458.83
6	GUIDE	743838928	8.26	11911	0.136	0.094	0.082	0.127	270.977000	-9.252919	-443.24	-2014.01
7	GUIDE	743836984	9.73	11896	0.158	0.247	0.133	0.220	271.102916	-9.261879	-351.52	-2453.15

2.4 Star Slots

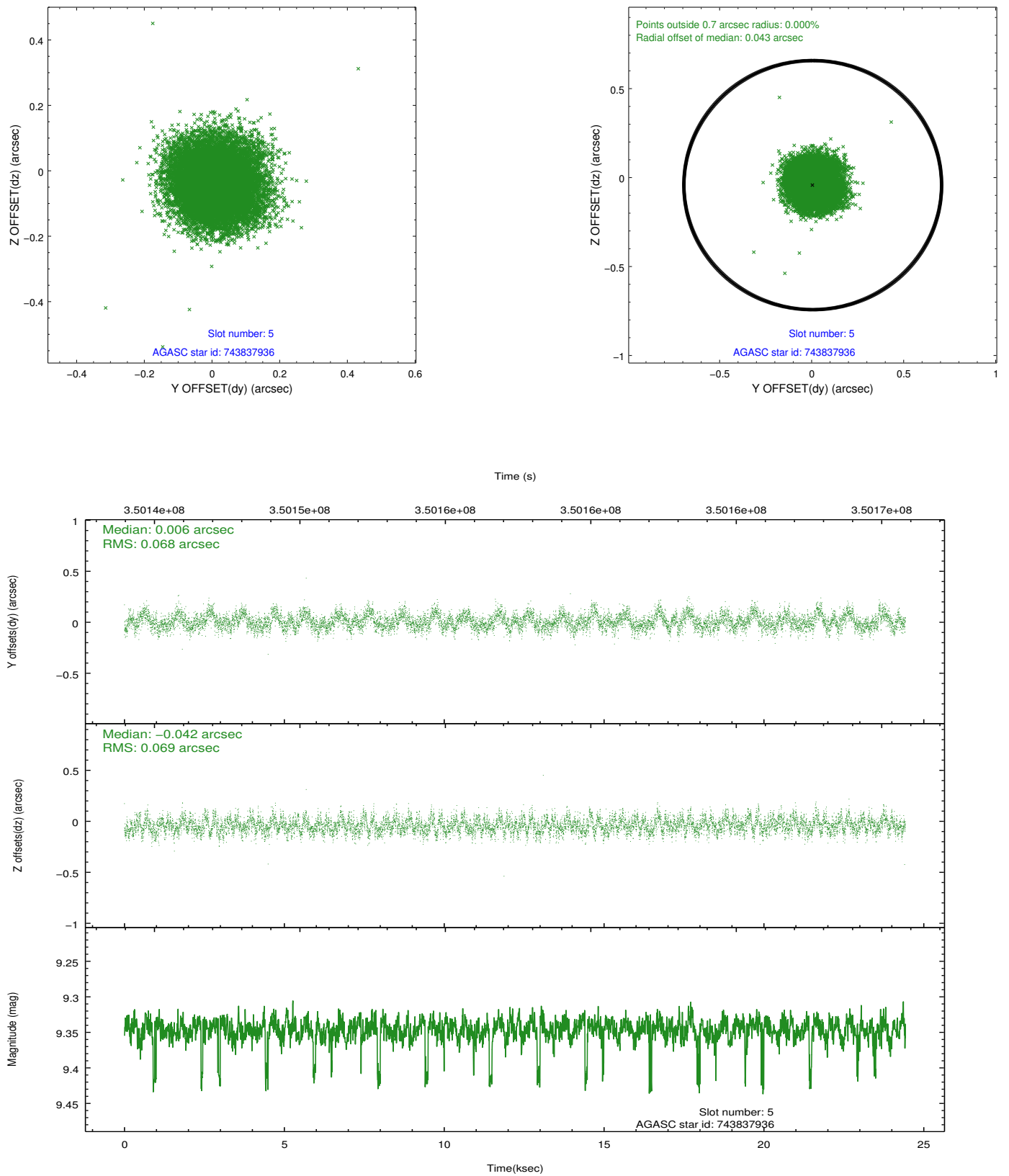
2.4.1 Slot 3



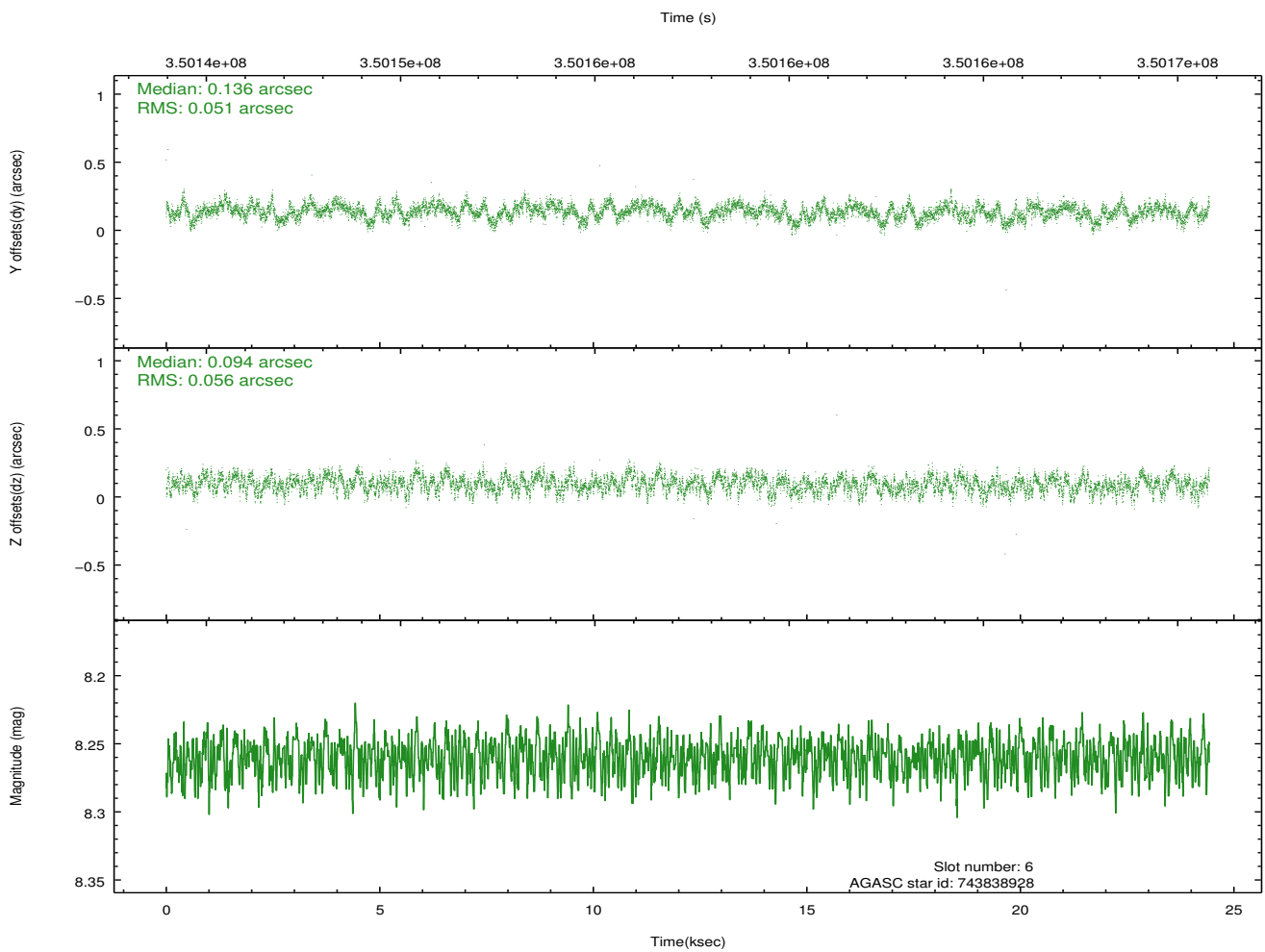
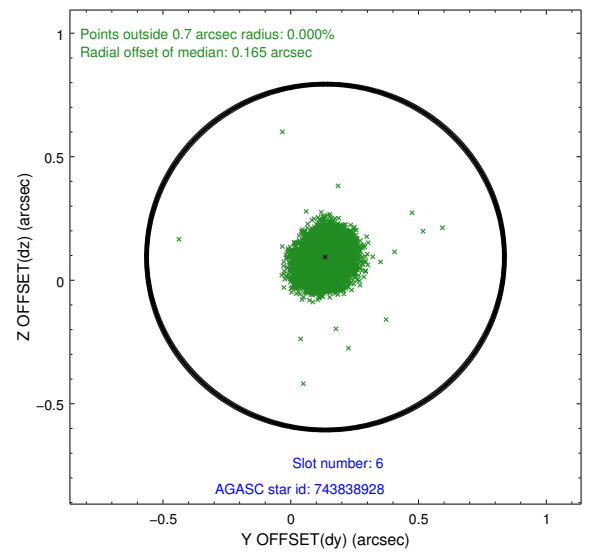
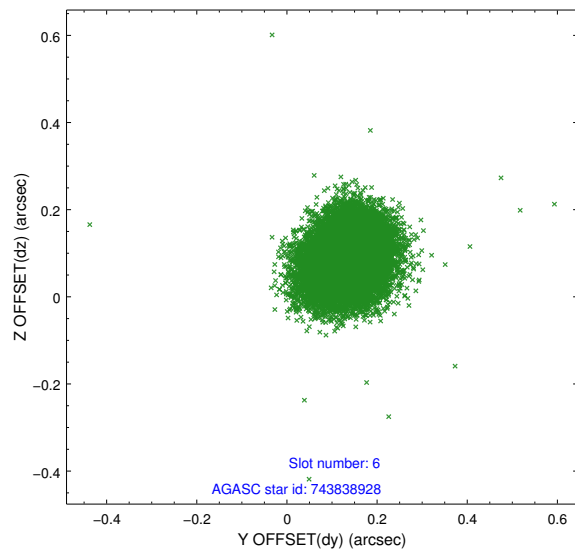
2.4.2 Slot 4



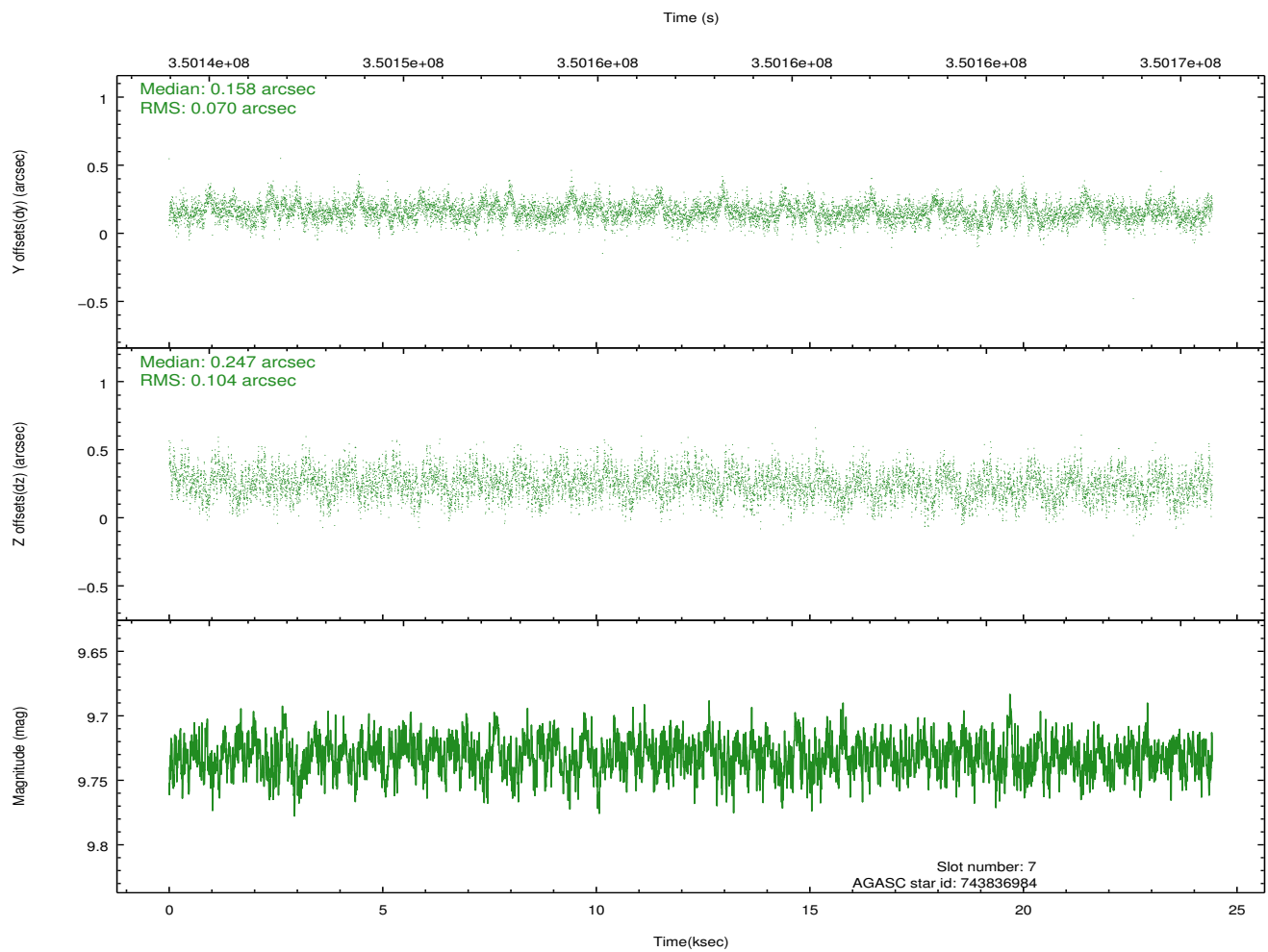
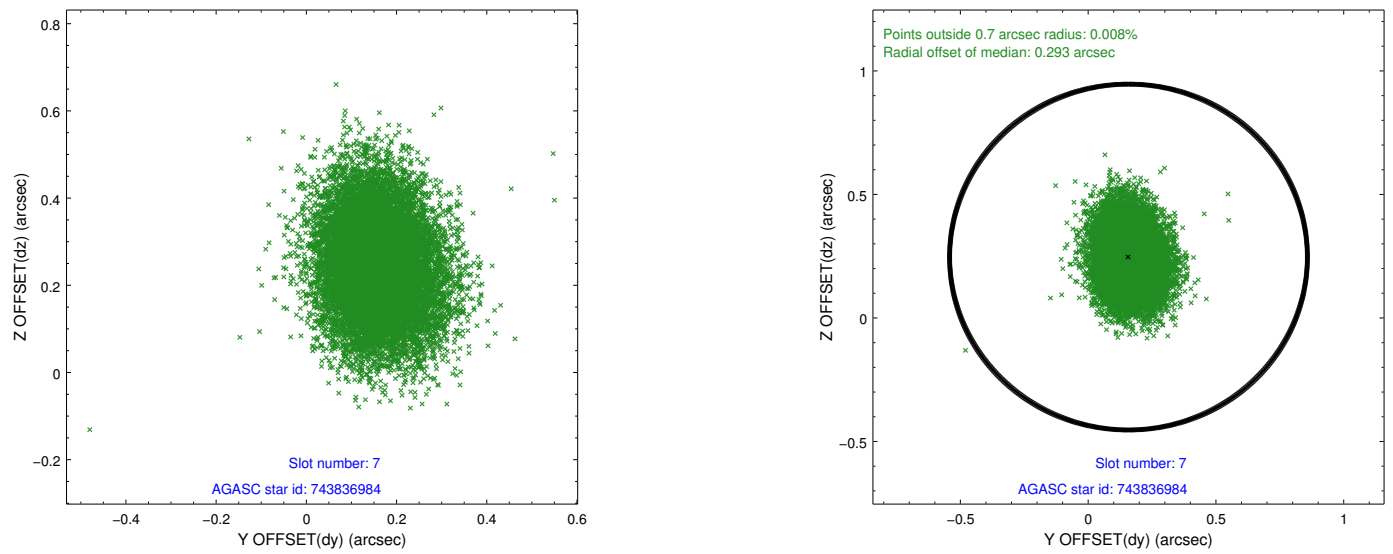
2.4.3 Slot 5



2.4.4 Slot 6

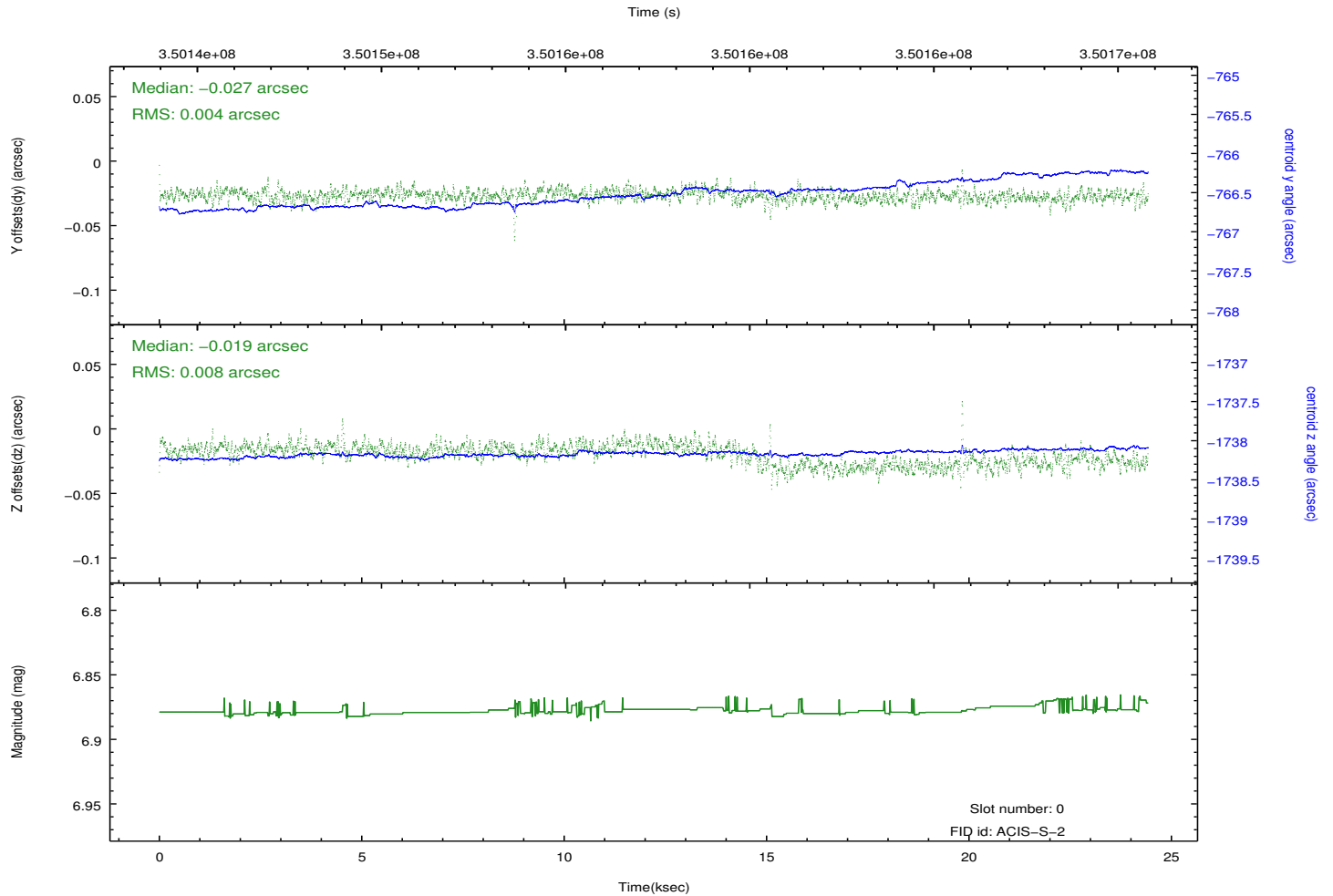
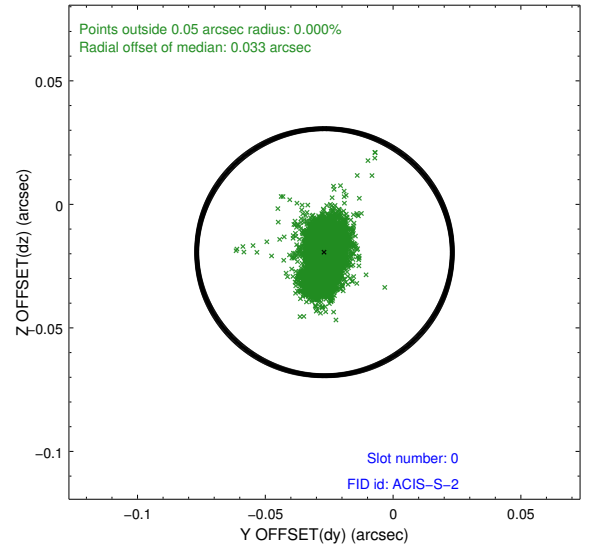
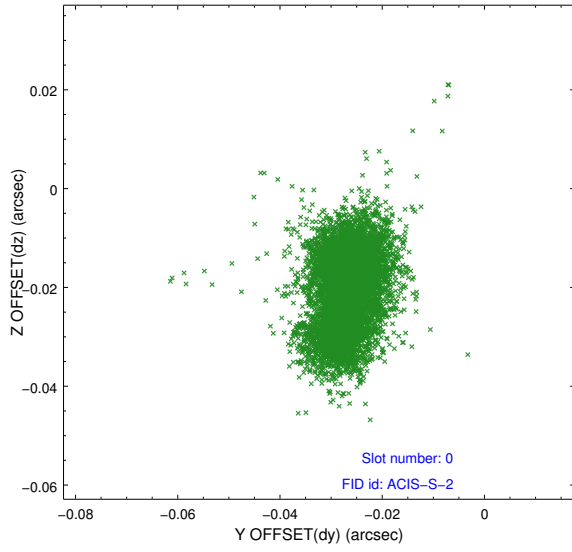


2.4.5 Slot 7

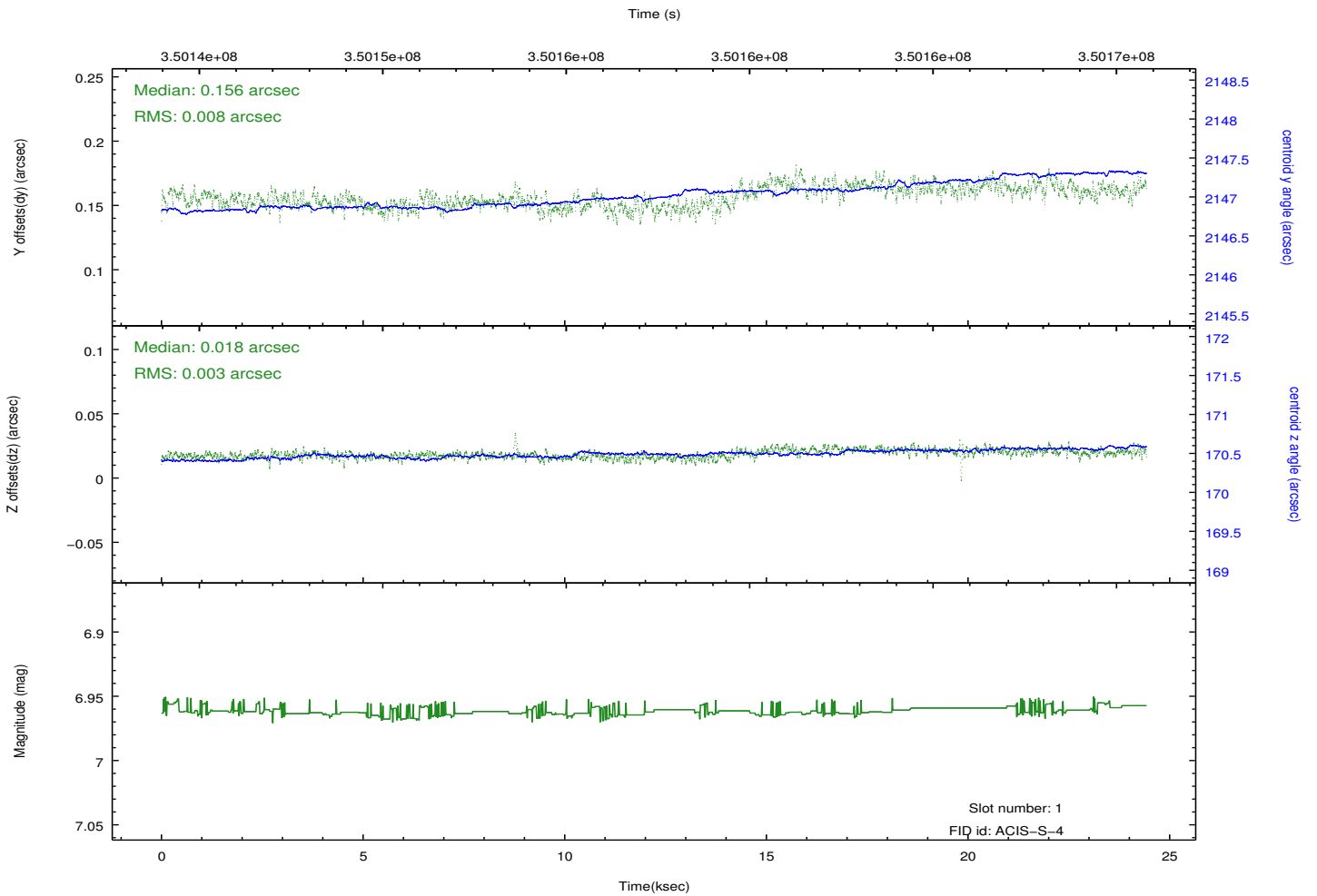
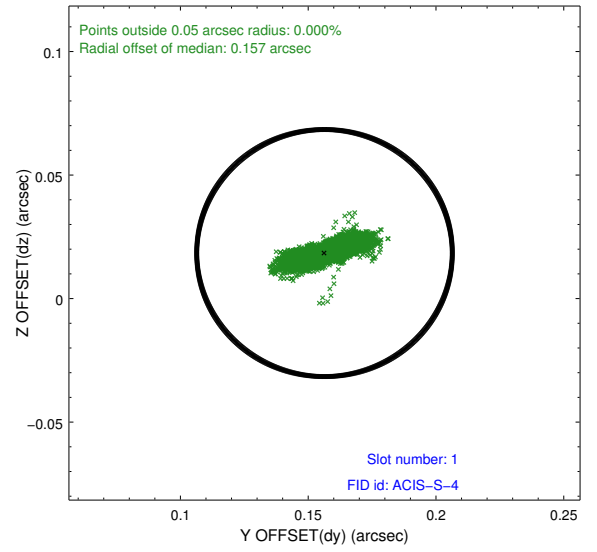
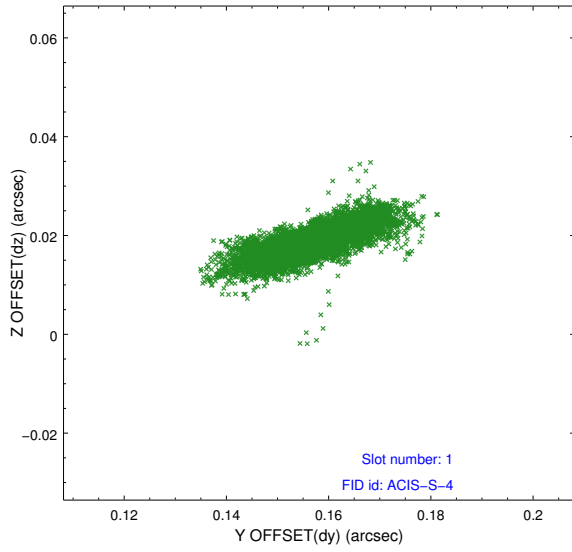


2.5 FID Slots

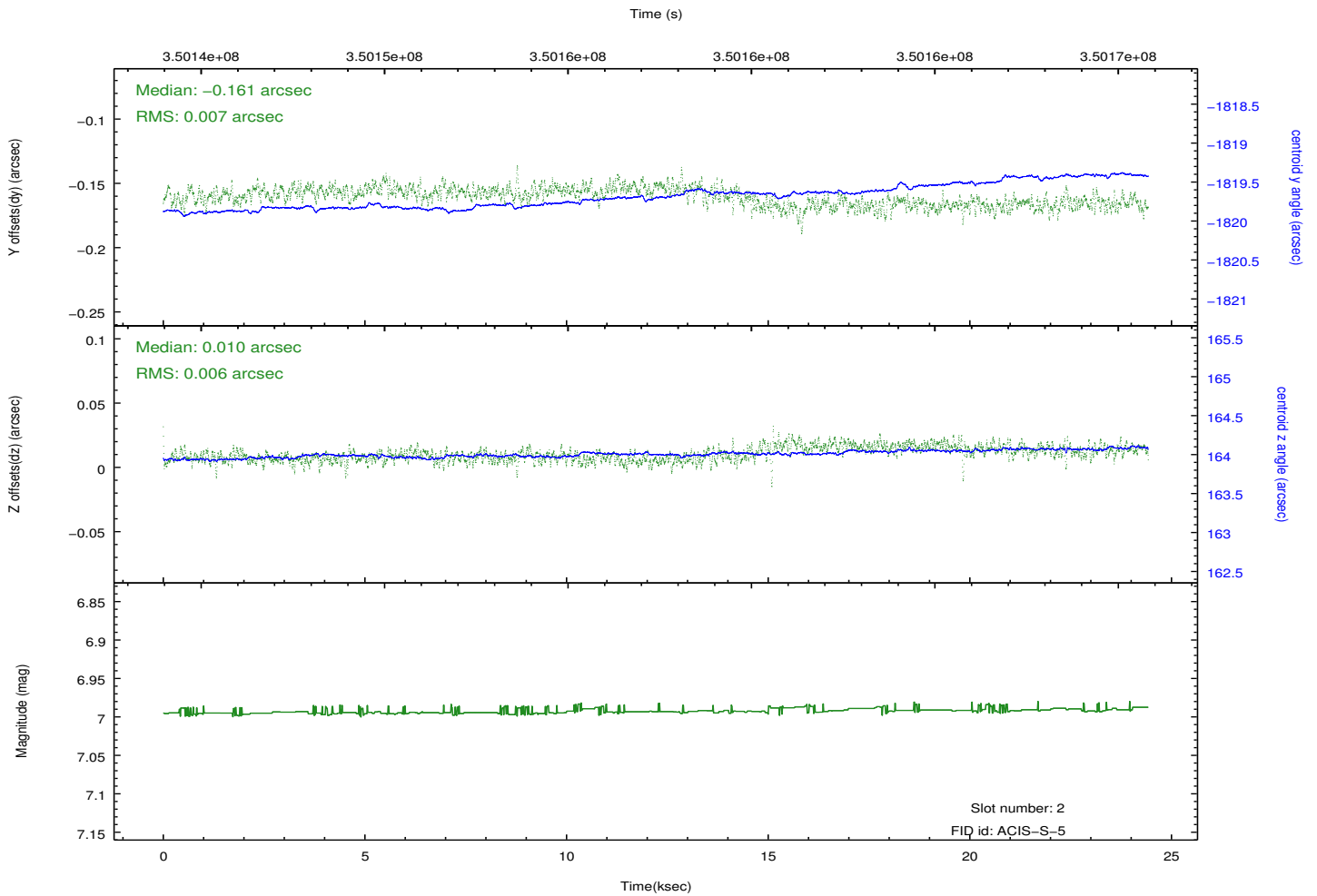
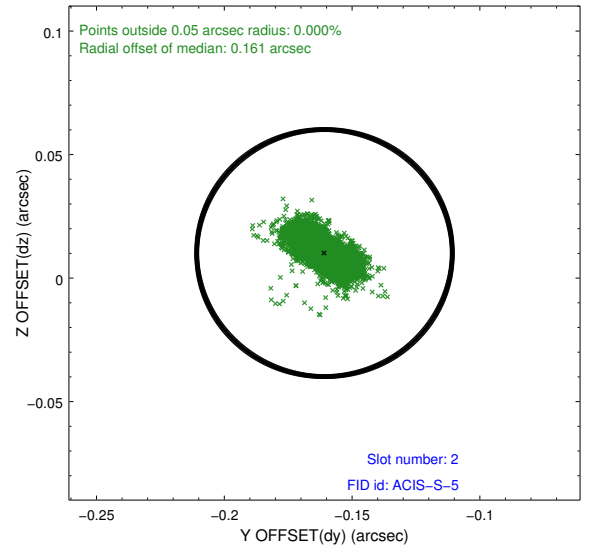
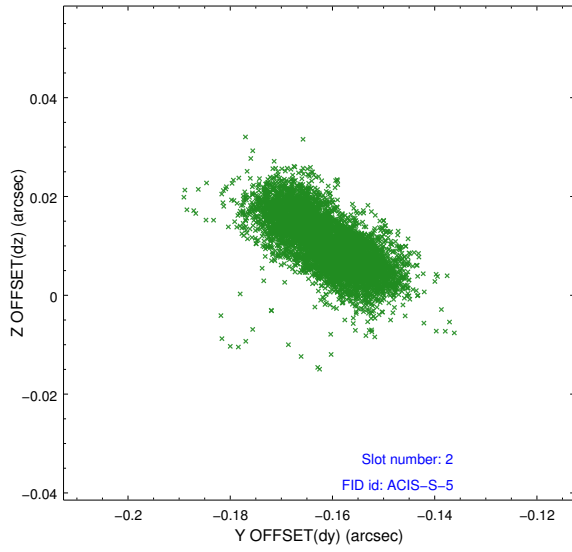
2.5.1 Slot 0



2.5.2 Slot 1



2.5.3 Slot 2



A Summary

A.1 Status

V&V Scientist	Jen Lauer
V&V Date (YYYY-MM-DD)	2012.06.06
V&V Edition	1
V&V Disposition and Status	OK
V&V Charge Time	23.9320001

A.2 Comments

Optional chip CCD I2 not used.