

# V&V Reference Report

## L2 ASCDS Version : 8.4.4

Observation 9617 - L2 Version 3  
Chandra X-Ray Center

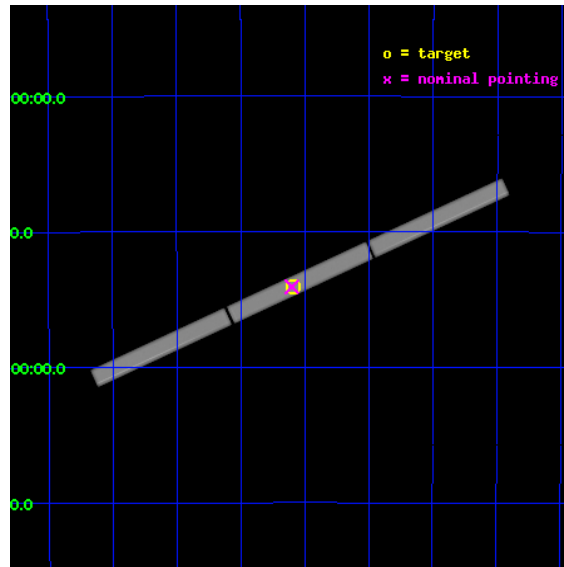
L2 Processing Date : Aug 12 2012

## Contents

<b>1</b>	<b>Front</b>	<b>2</b>
<b>2</b>	<b>OBI</b>	<b>3</b>
2.1	OBI . . . . .	3
2.1.1	Images . . . . .	3
2.1.2	Parameters . . . . .	4
2.1.3	Events . . . . .	4
2.2	Compared Parameters . . . . .	5
2.3	Aspect . . . . .	6
2.4	Star Slots . . . . .	9
2.4.1	Slot 3 . . . . .	9
2.4.2	Slot 4 . . . . .	10
2.4.3	Slot 5 . . . . .	11
2.4.4	Slot 6 . . . . .	12
2.4.5	Slot 7 . . . . .	13
2.5	FID Slots . . . . .	14
2.5.1	Slot 0 . . . . .	14
2.5.2	Slot 1 . . . . .	15
2.5.3	Slot 2 . . . . .	16
<b>3</b>	<b>Gratings</b>	<b>17</b>
3.1	LETG Arm . . . . .	17
<b>A</b>	<b>Summary</b>	<b>19</b>
A.1	Status . . . . .	19
A.2	Comments . . . . .	19

# 1 Front

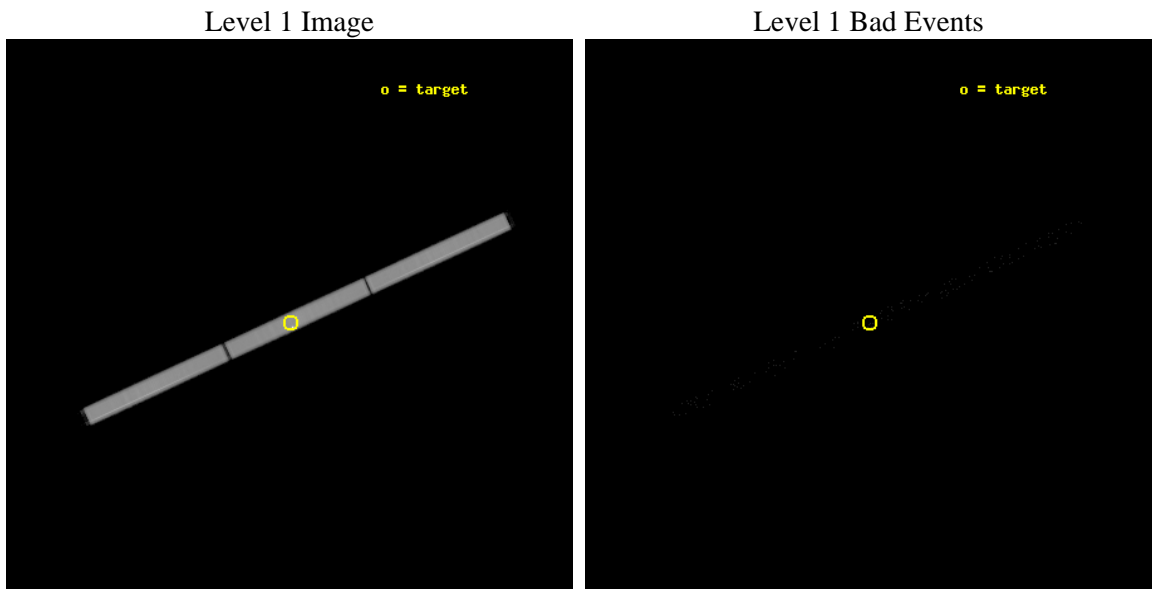
seq_num	290740	Sequence number
obs_id	9617	Observation id
title	AO9 Calibration Observations of Sirius B	Proposal title
observer	Dr. CXC Calibration	Principal investigator
object	Sirius B	Source name
ra_targ	101.295833	Observer's specified target RA [deg]
dec_targ	-16.701389	Observer's specified target Dec [deg]
ra_nom	101.30031042624	Nominal RA [deg]
dec_nom	-16.703455640194	Nominal Dec [deg]
roll_nom	335.19717556342	Nominal Roll [deg]
revision	3	Processing version of data
ontime	47168.45228523	[s]
livedtime	46703.349353784	Ontime multiplied by DTCOR
l2events	3983561	Number of level 2 events



## 2 OBI

### 2.1 OBI

#### 2.1.1 Images



## 2.1.2 Parameters

obi_num	0	Obi number	sched_exp_time	47000.000000	[s] Scheduled observation exposure time
ascdsver	8.4.5	Processing system revision	ontime	47168.45228523	[s]
caldbver	4.5.1.1	&#160	l1events	5216859	Number of level 1 events
date	2012-08-12T09:10:06	Date and time of file creation			
revision	3	Processing version of data			

## 2.1.3 Events

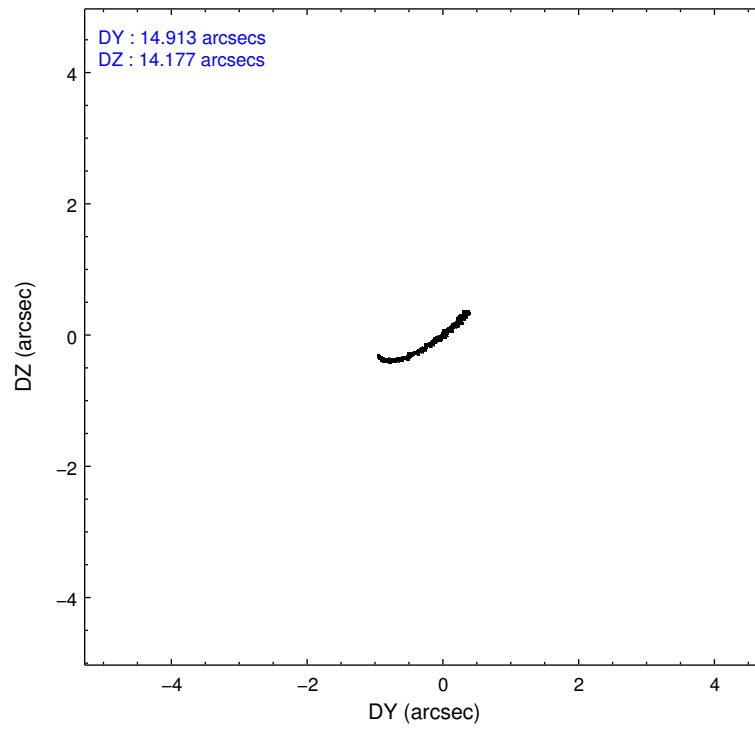
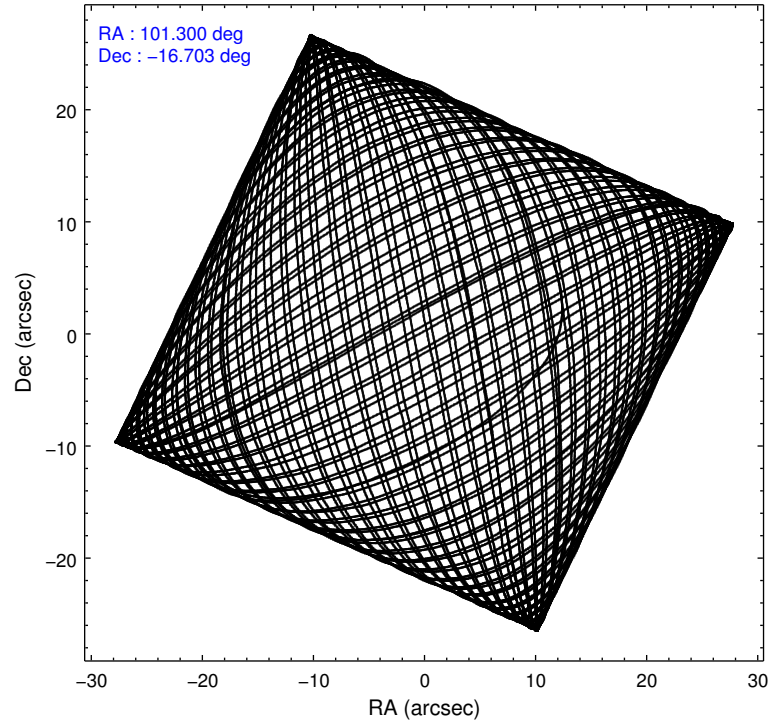
### Level 1 Events

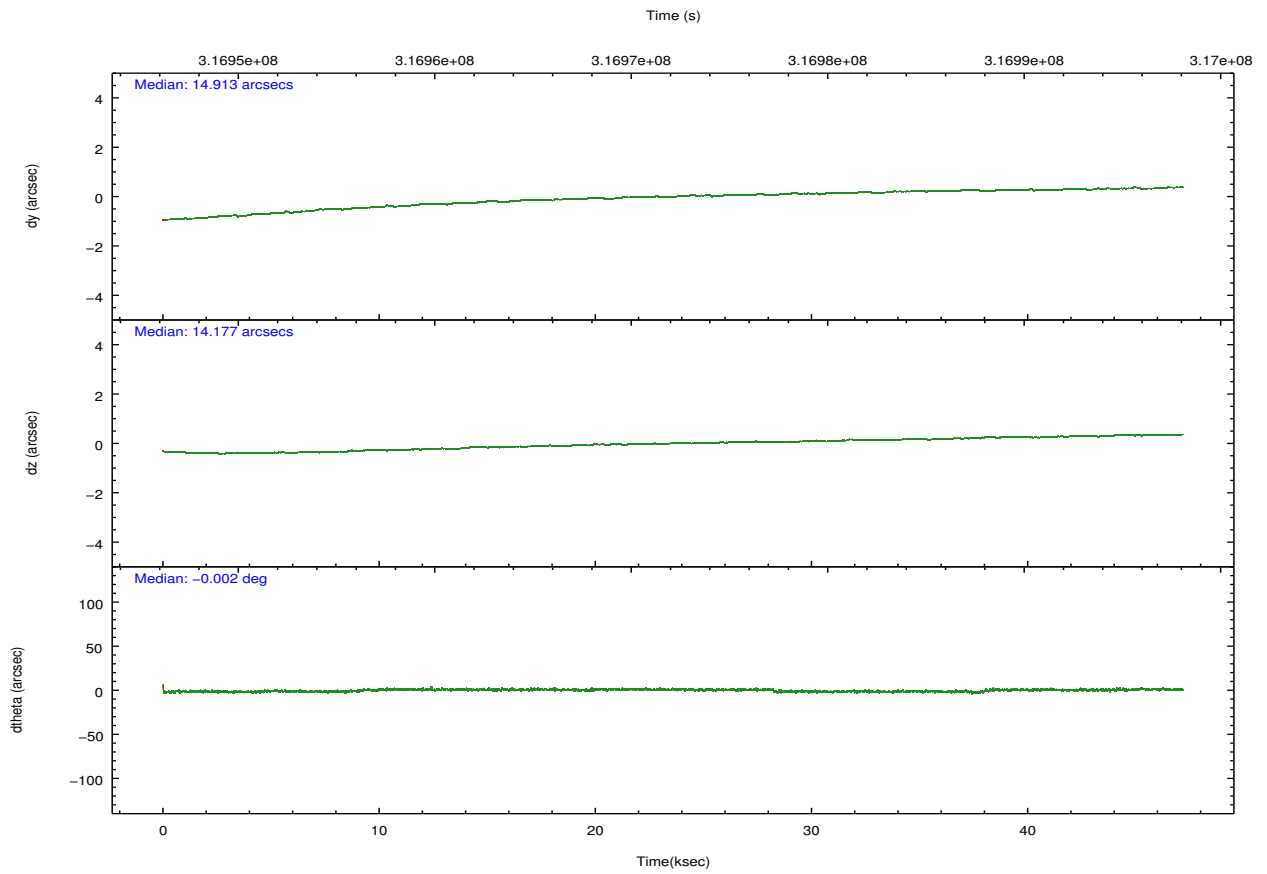
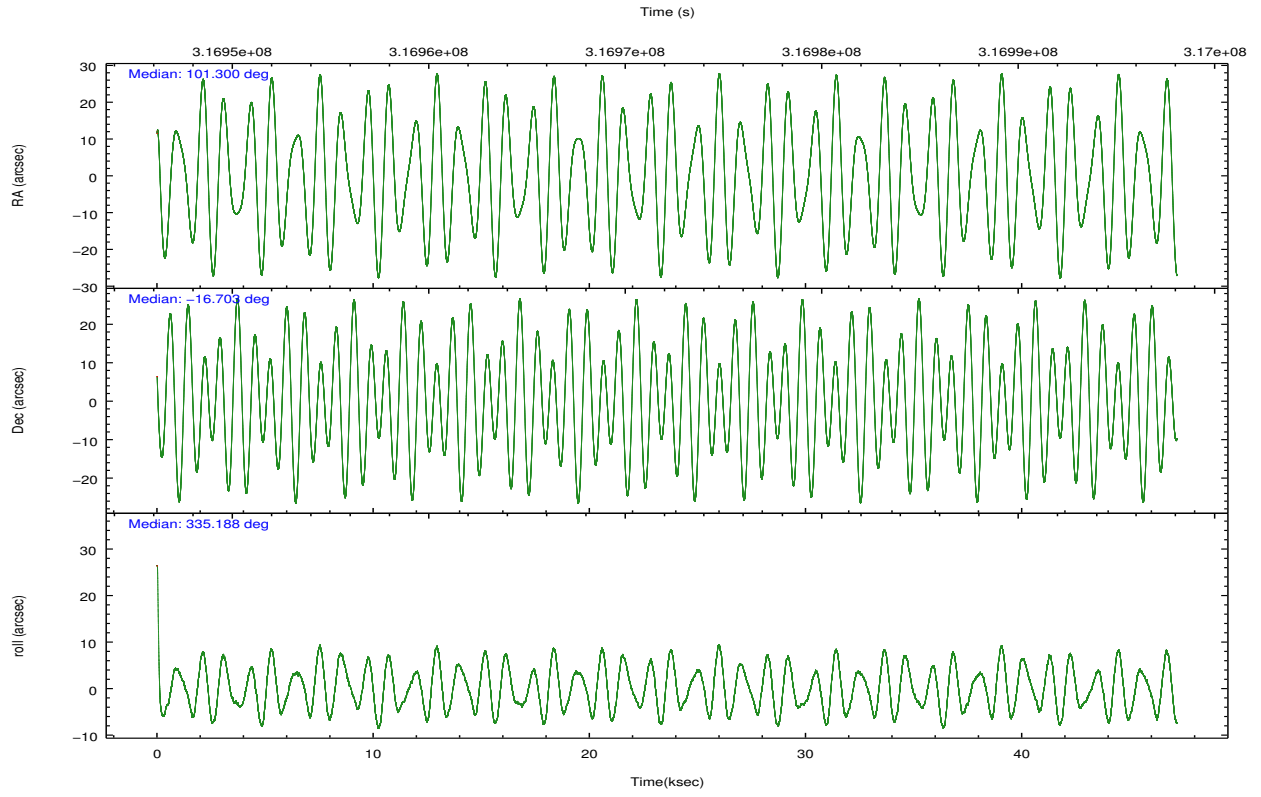
	<b>segment 1</b>	<b>segment 2</b>	<b>segment 3</b>
level 1 events	1747325	1709671	1759863
rejected events	18969	18773	19367
rejected %	1%	1%	1%

## 2.2 Compared Parameters

Parameter	Planned	Actual	Parameter	Planned	Actual
Instrument	HRC	HRC	Obspar format version number	7	7
Detector	HRC-S	HRC-S	Obspar file type	PREDICTED	ACTUAL
Grating	LETG	LETG	Obspar update status	NONE	UPDATED
Data mode	OBSERVING	OBSERVING			
Observation mode	POINTING	POINTING			
[deg] Pointing RA	101.270639	101.3003104262413			
[deg] Pointing Dec	-16.707467	-16.70345564019447			
[deg] Pointing Roll	335.121304	335.1971755634186			
[mm] SIM focus pos	-1.429586	-1.428180813131781			
[mm] SIM defocus	0.1037507710433287	0.1051558262725154			
[mm] SIM translation stage pos	250.455976	250.466033080201			
[mm] SIM translation stage offset	0	-0.01005468664627074			
[s] Observation start time (MET)	316948725.184000	316947872.64642			
Observation start date	2008-01-17T09:17:40	2008-01-17T09:04:32			
[s] Observation end time (MET)	316995725.184000	316996501.72378			
Observation end date	2008-01-17T22:21:00	2008-01-17T22:35:01			

## 2.3 Aspect



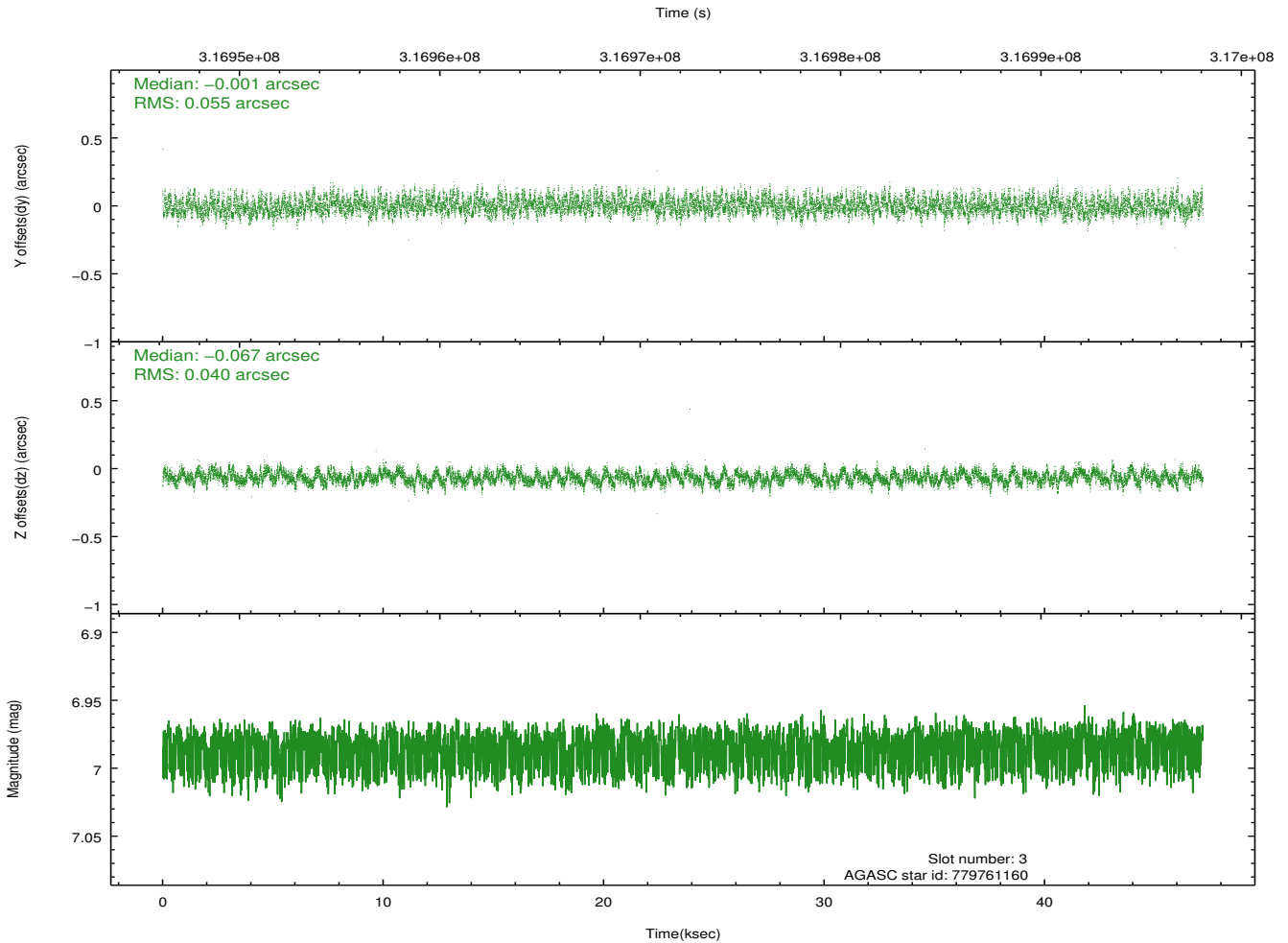
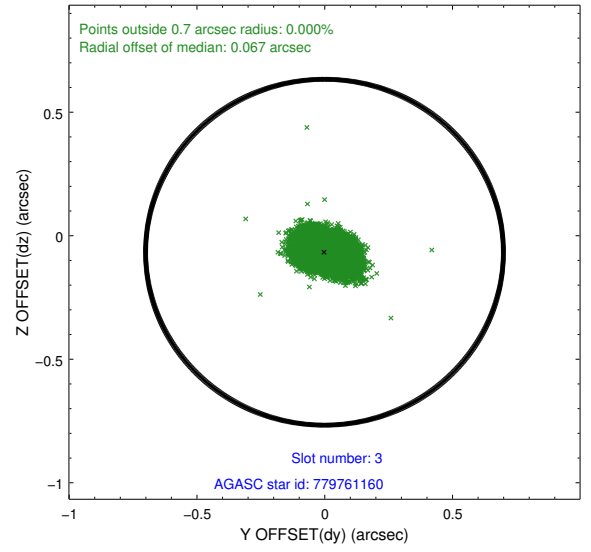
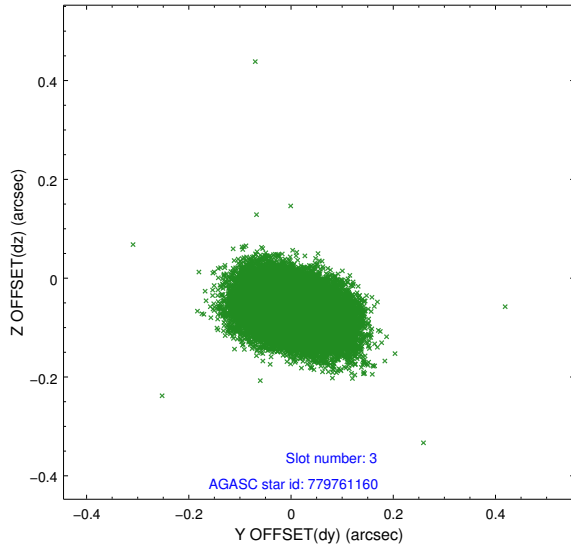


### Slot Statistics

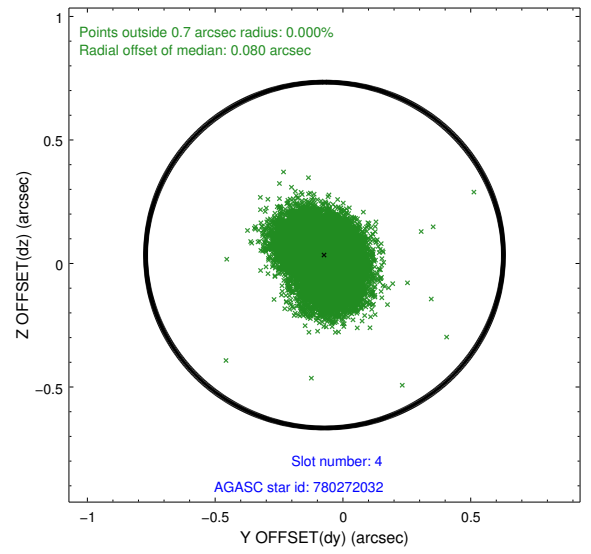
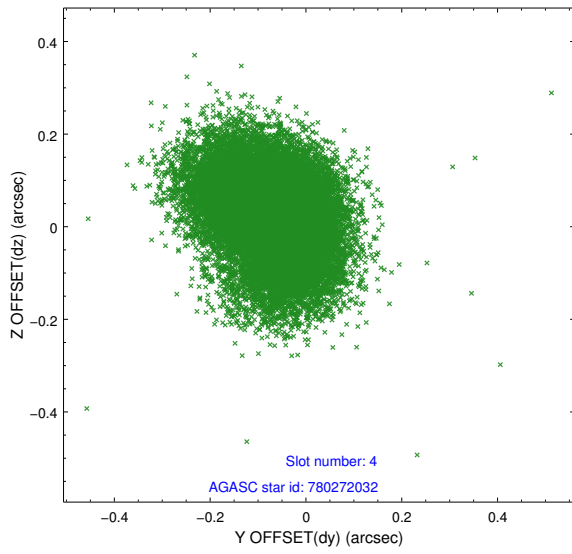
slot	status	id	mag	n_pts	med_dy	med_dz	dr1	dr2	ra	dec	mean_y	mean_z
0	FID	HRC-S-2	6.98	11505	0.164	-0.113	0.029	0.043	0.000000	0.000000	1230.53	-455.62
1	FID	HRC-S-3	7.01	11505	0.076	-0.086	0.012	0.018	0.000000	0.000000	-1171.82	566.62
2	FID	HRC-S-4	6.96	11502	0.167	-0.093	0.026	0.040	0.000000	0.000000	1229.04	569.19
3	GUIDE	779761160	6.99	23007	-0.001	-0.067	0.072	0.117	100.924262	-16.049952	-2082.49	1642.19
4	GUIDE	780272032	9.41	22985	-0.072	0.034	0.115	0.196	101.484293	-17.270688	1519.95	-1530.27
5	GUIDE	779766656	8.91	22923	-0.009	-0.082	0.094	0.146	101.759736	-16.190760	752.36	2397.18
6	GUIDE	780283312	8.66	22994	0.031	0.003	0.079	0.134	101.569387	-16.934625	1278.21	-309.23
7	GUIDE	779768416	8.47	23004	0.053	0.120	0.067	0.108	101.120303	-16.716200	-456.43	-246.51

## 2.4 Star Slots

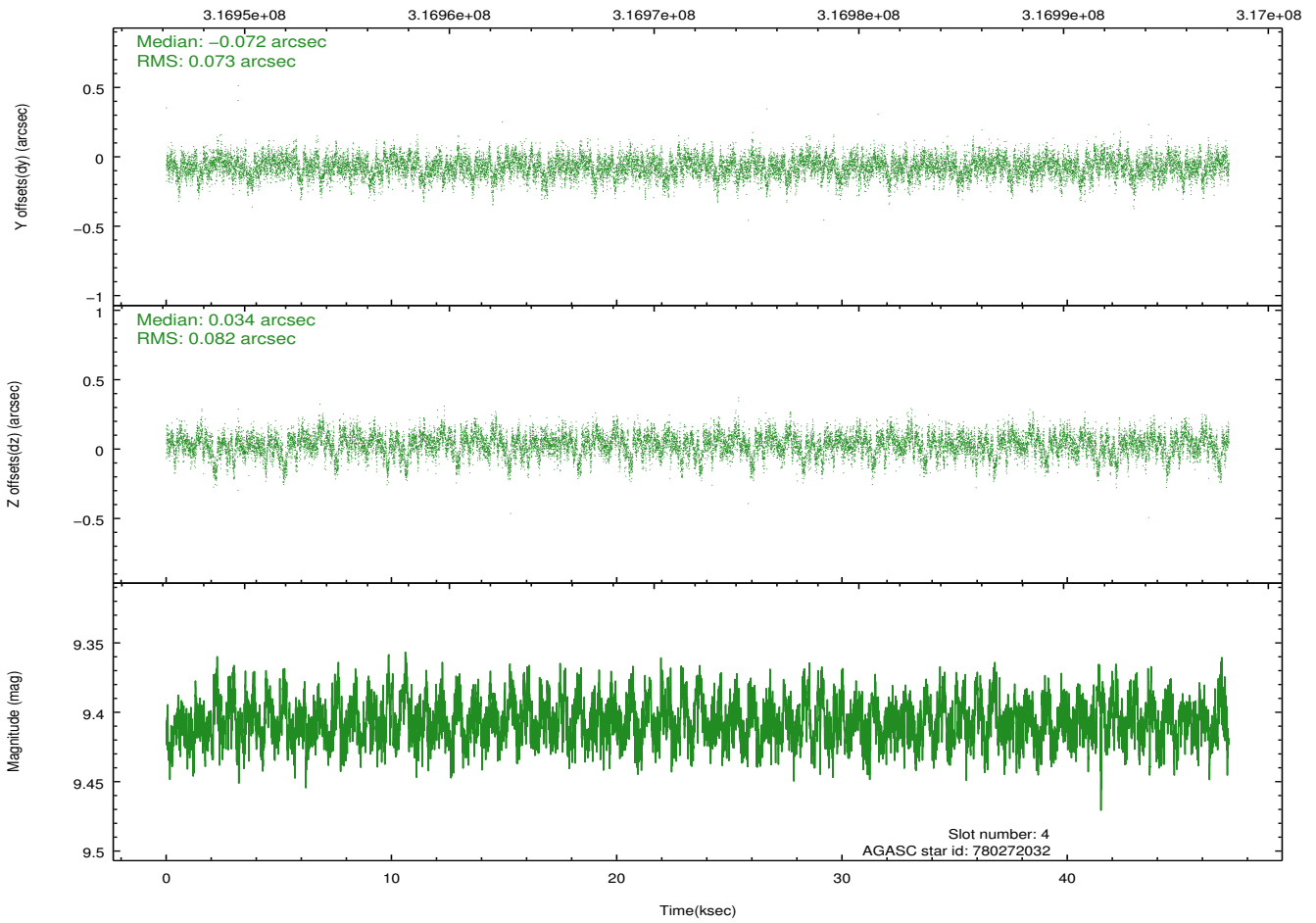
### 2.4.1 Slot 3



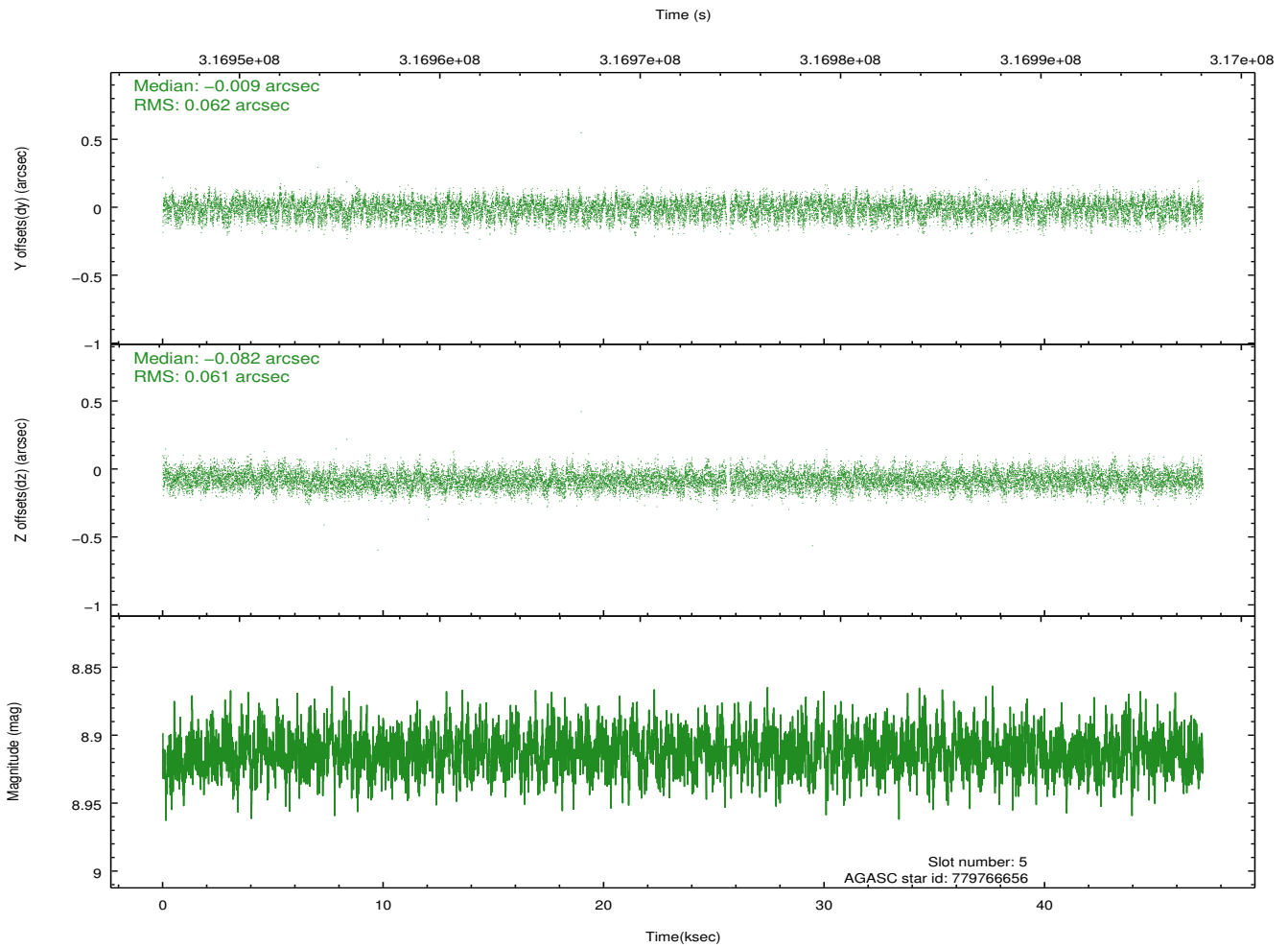
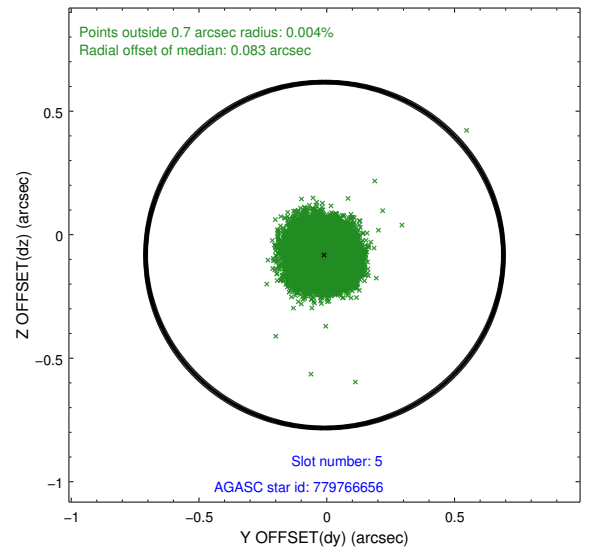
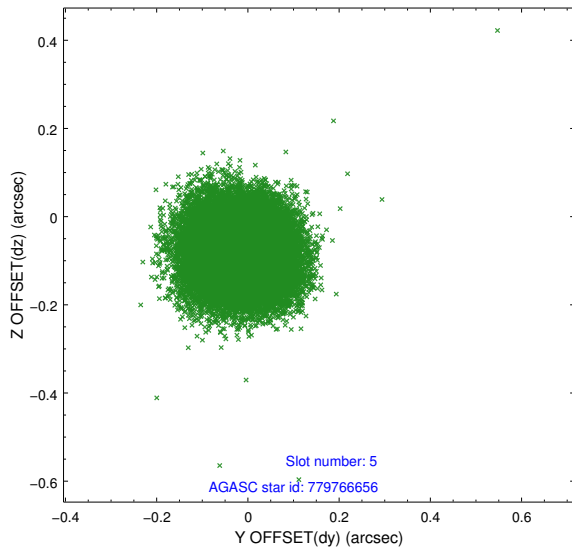
## 2.4.2 Slot 4



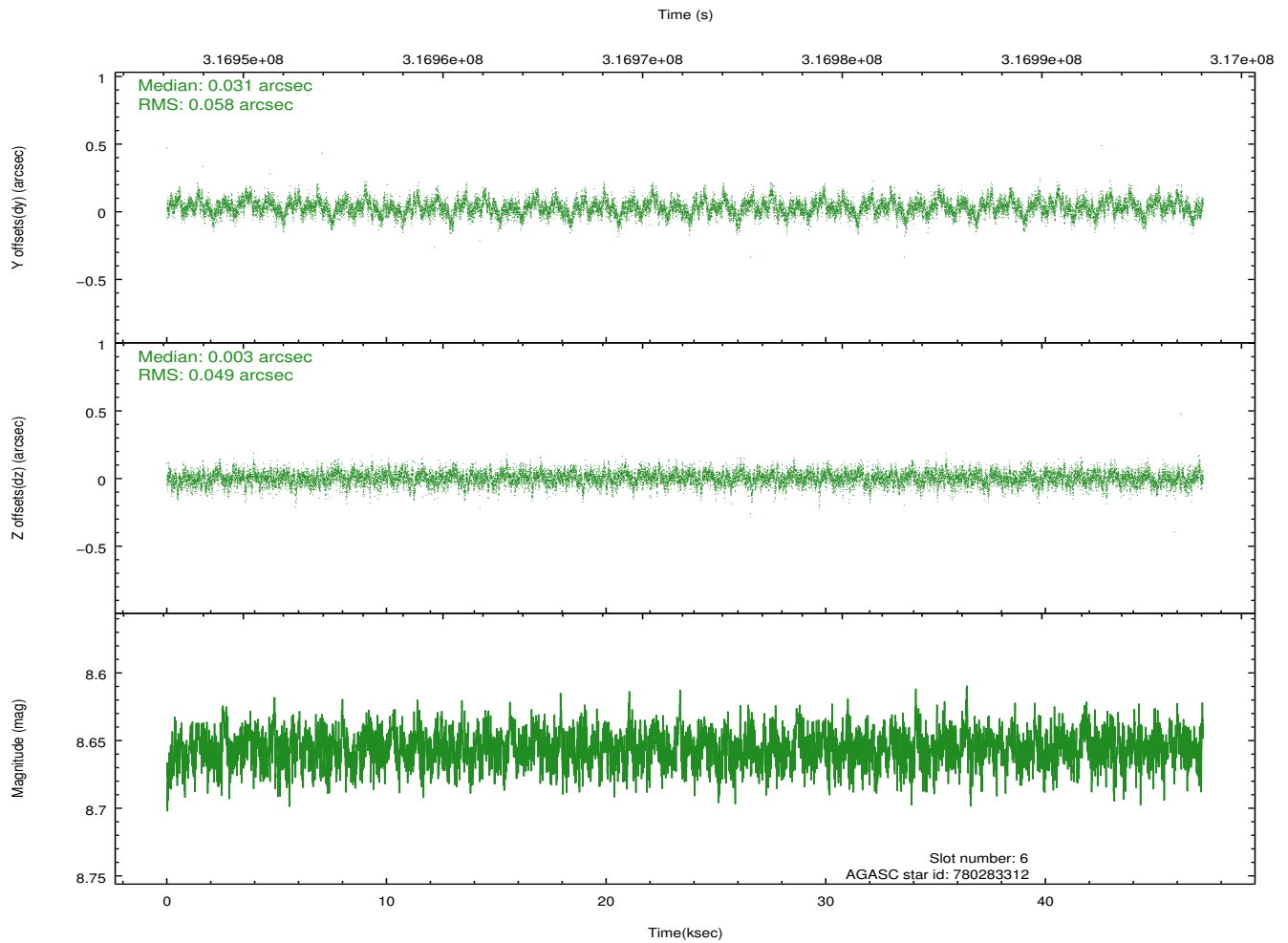
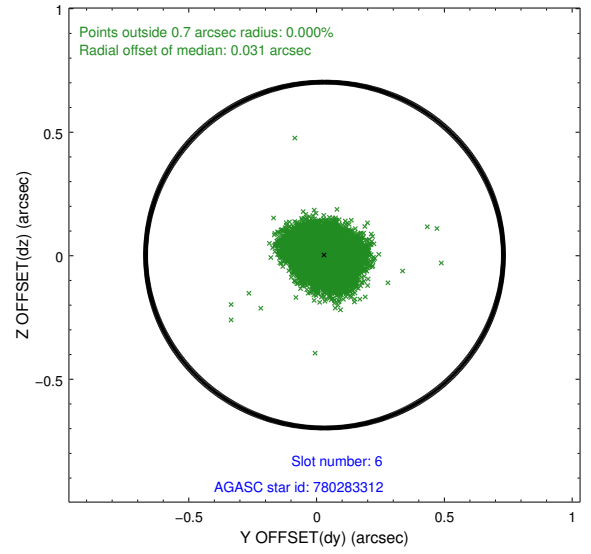
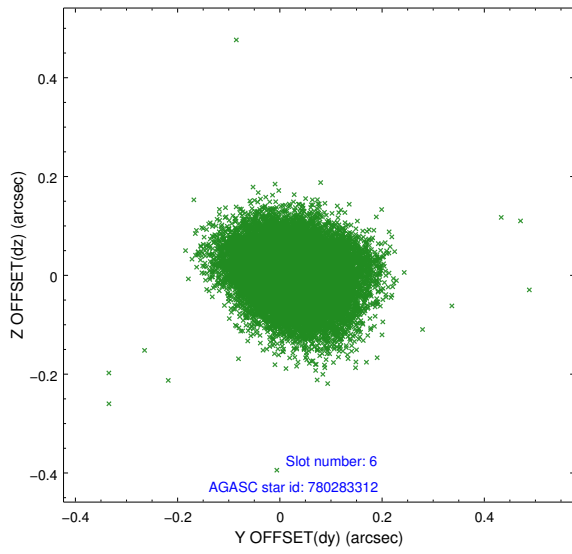
Time (s)



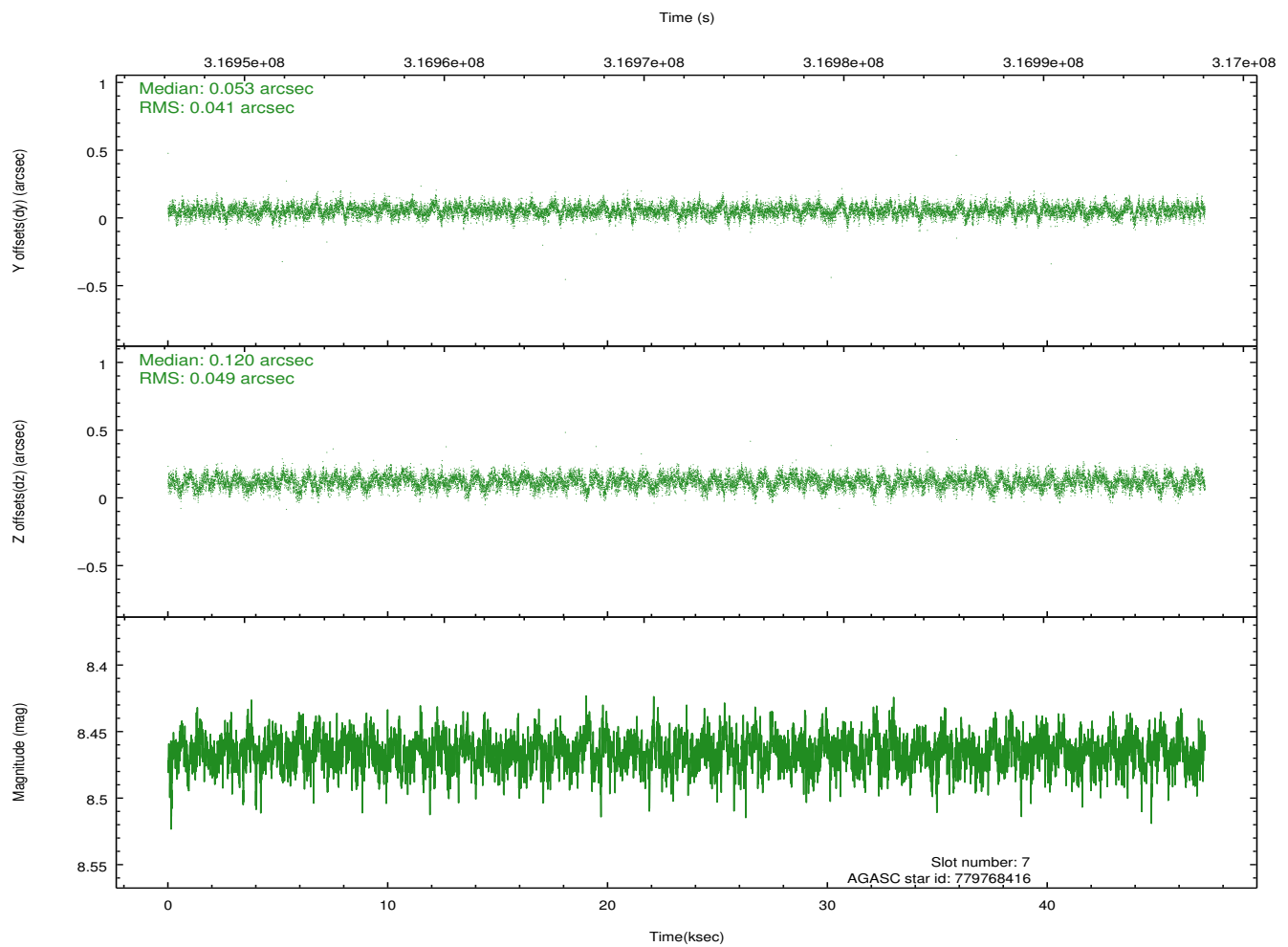
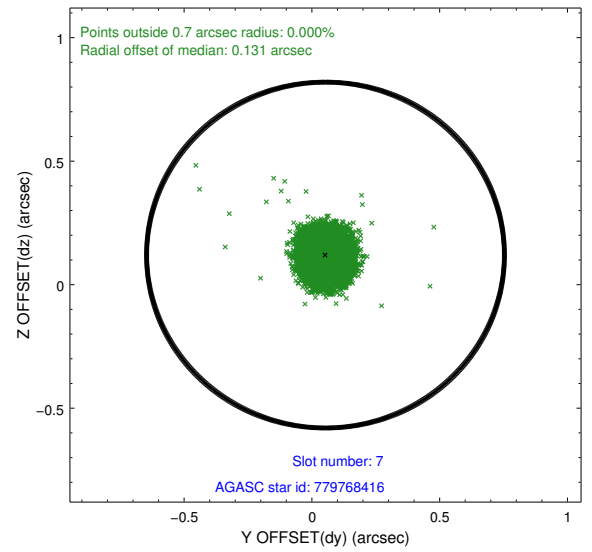
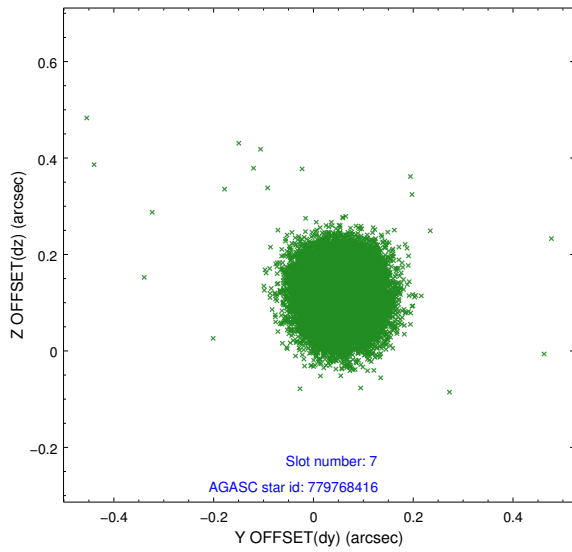
### 2.4.3 Slot 5



### 2.4.4 Slot 6

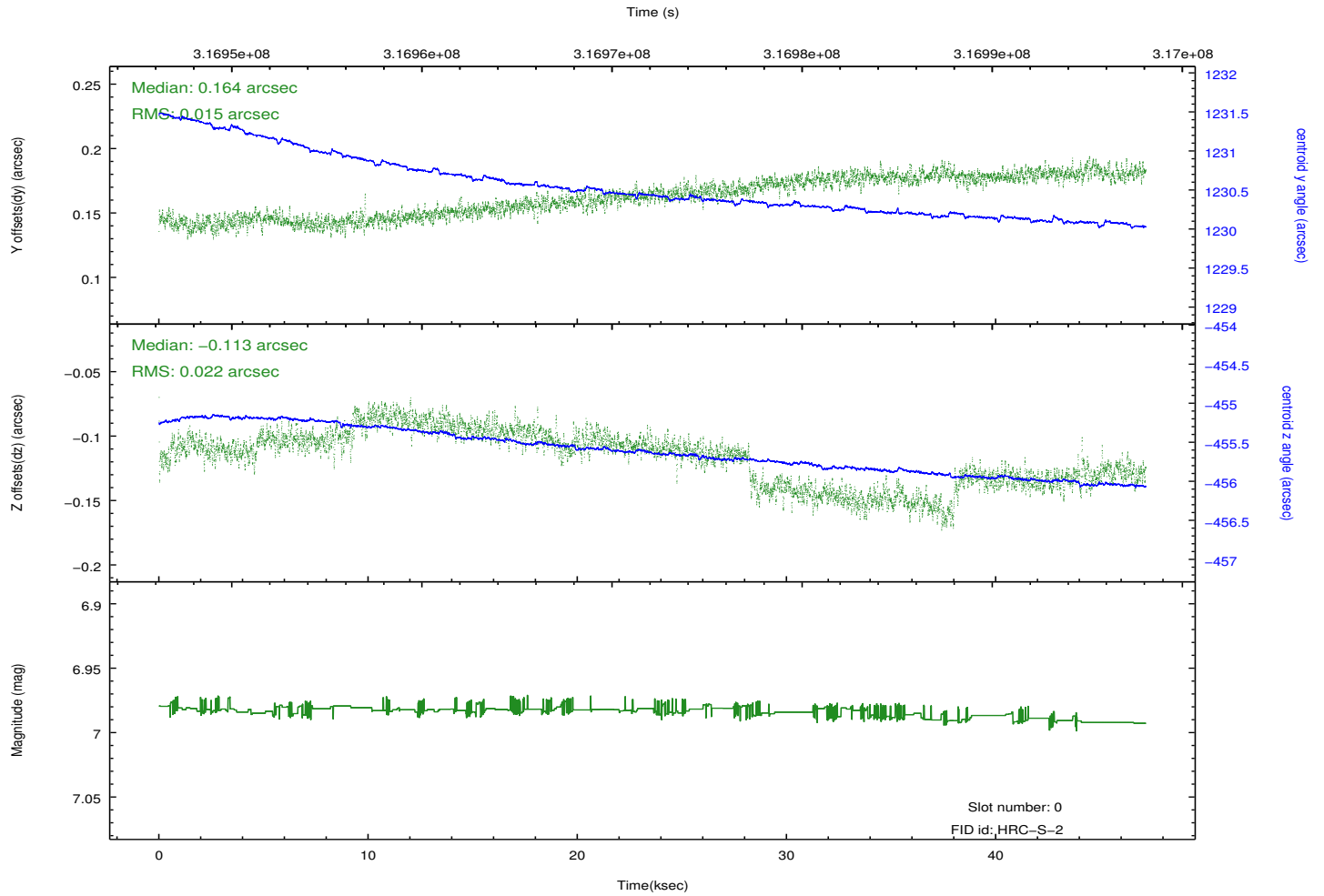
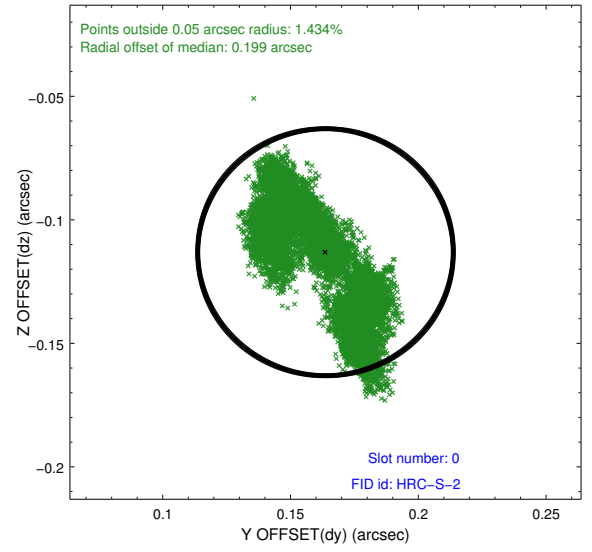
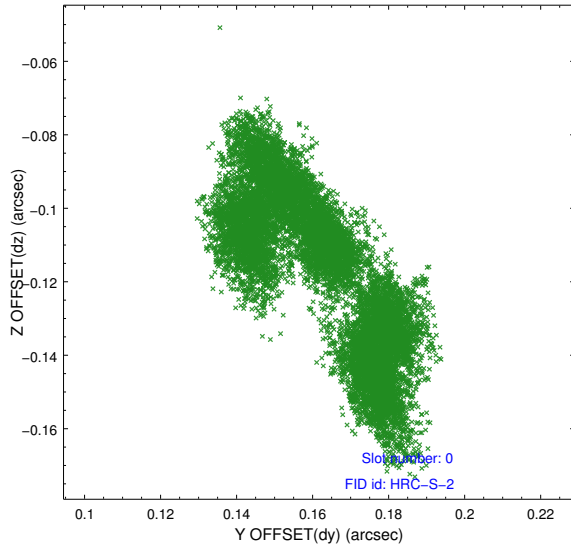


## 2.4.5 Slot 7

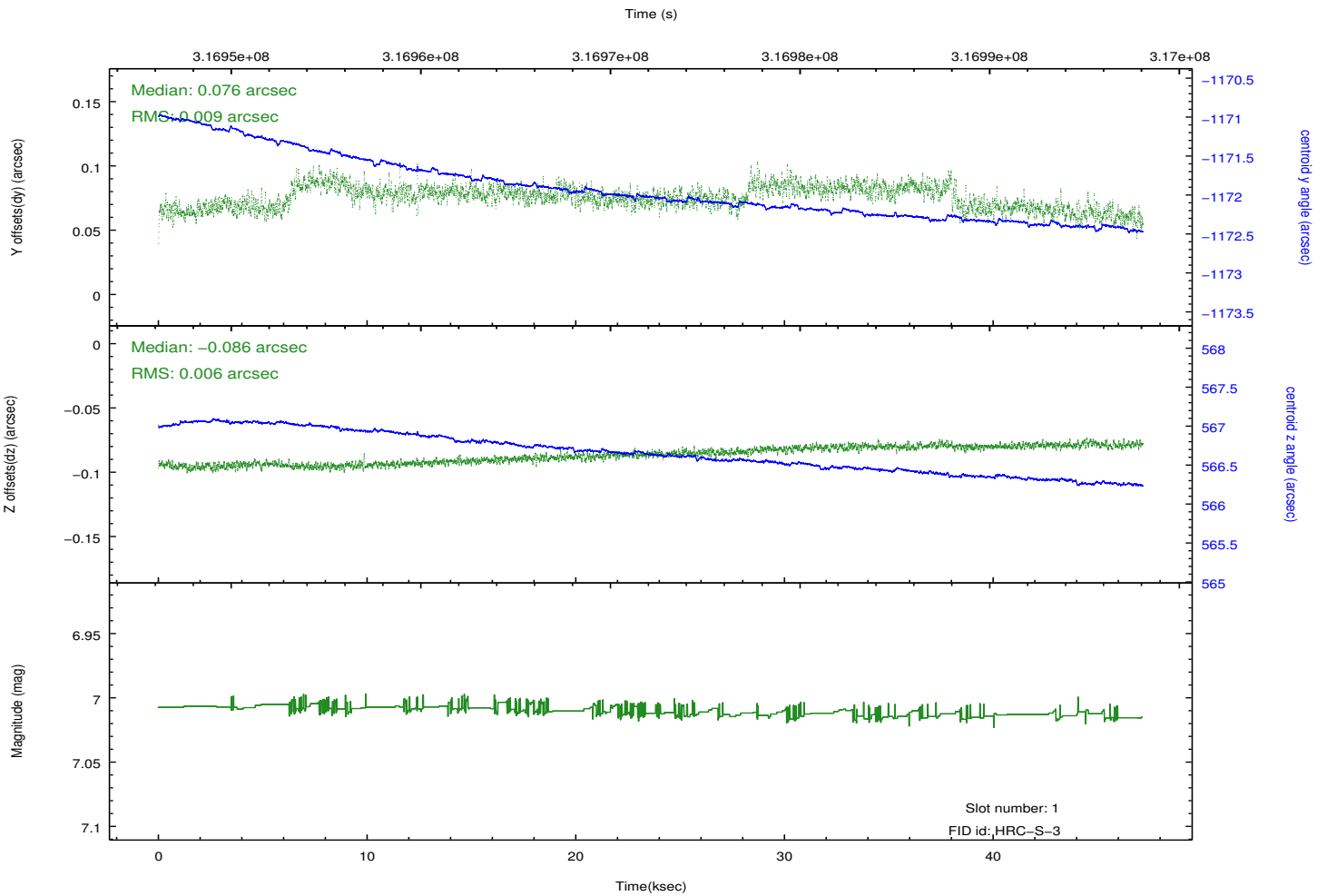
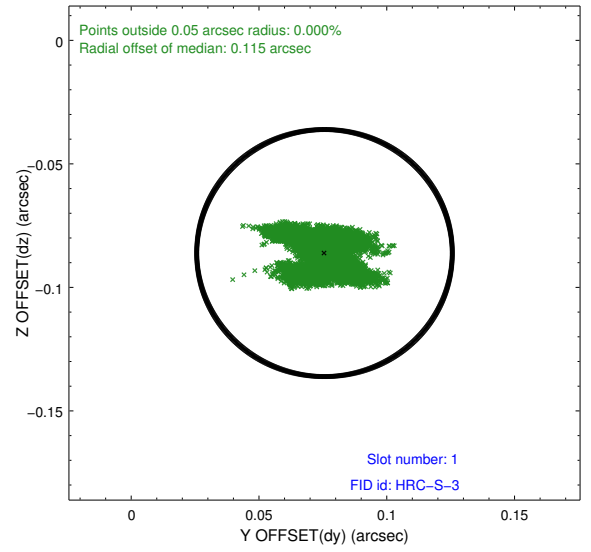
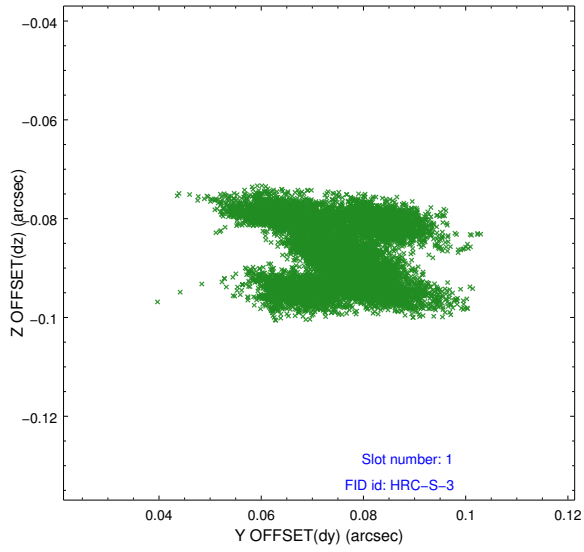


## 2.5 FID Slots

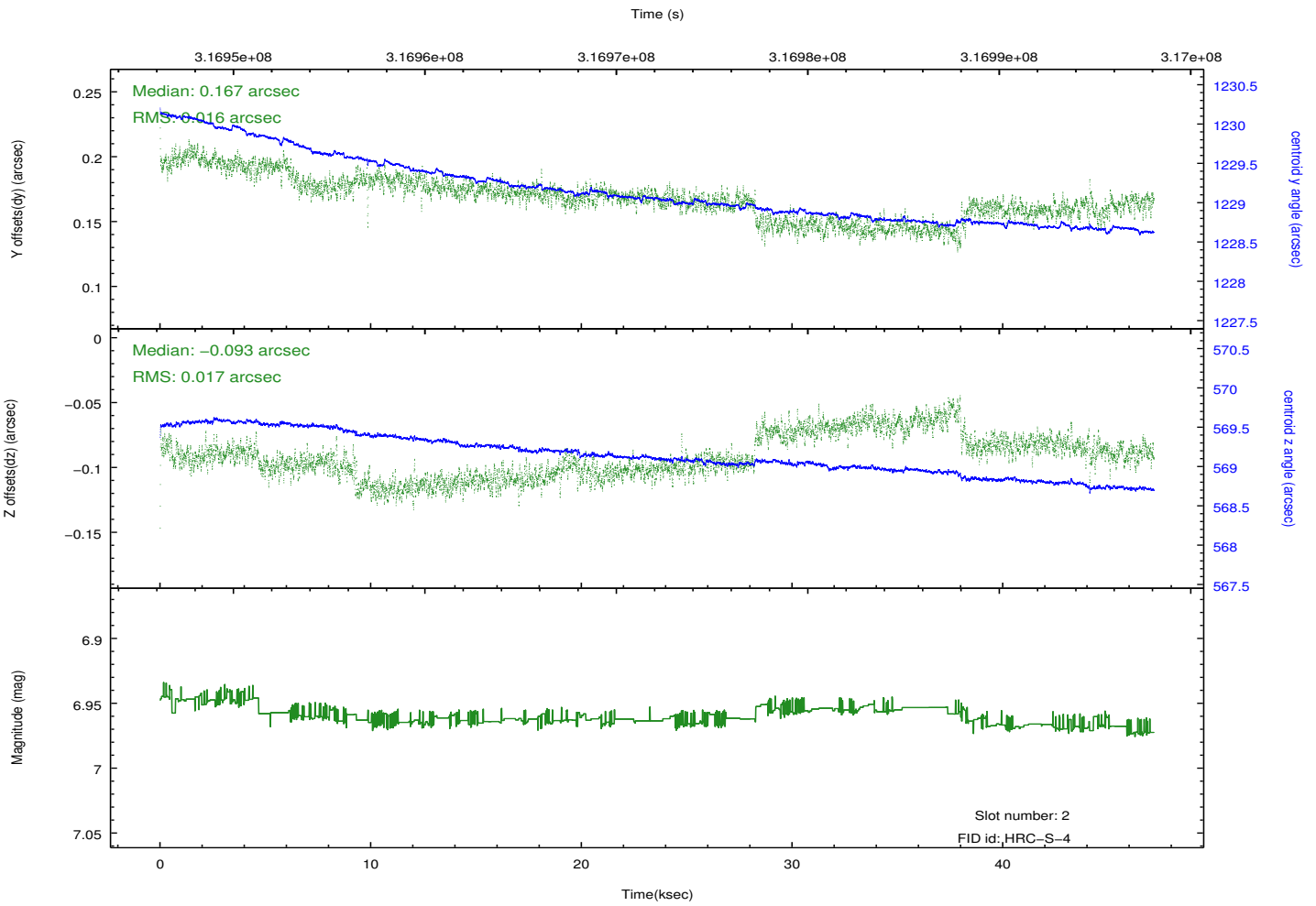
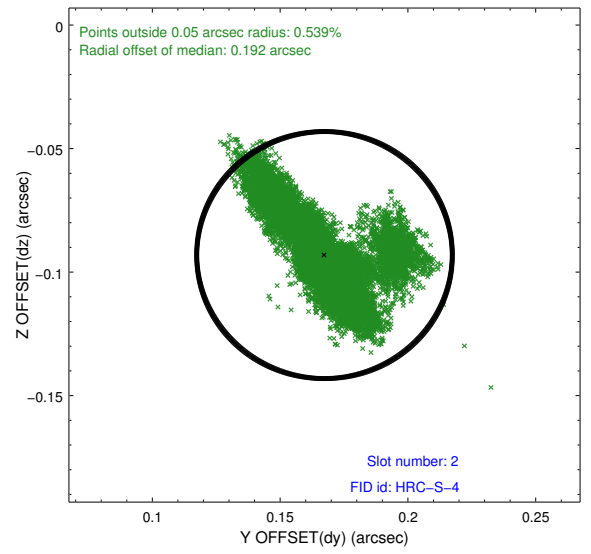
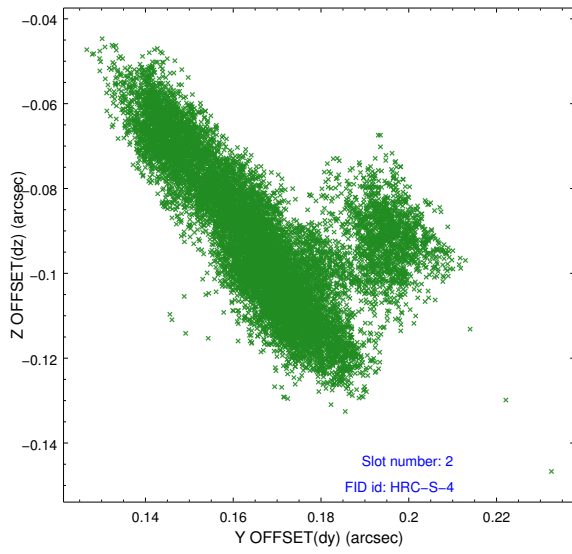
### 2.5.1 Slot 0



## 2.5.2 Slot 1

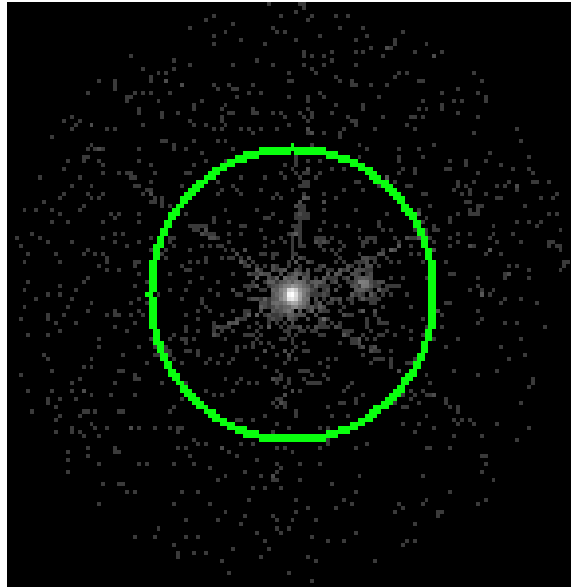


### 2.5.3 Slot 2

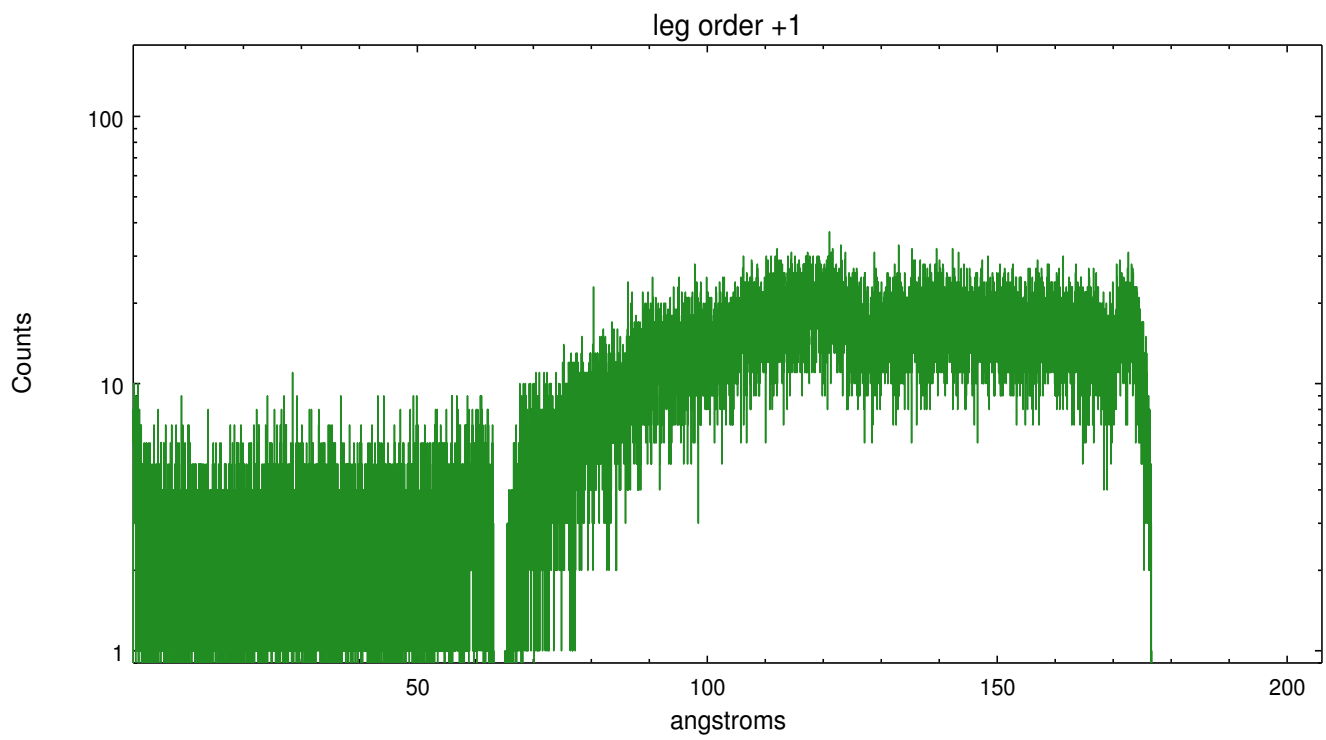
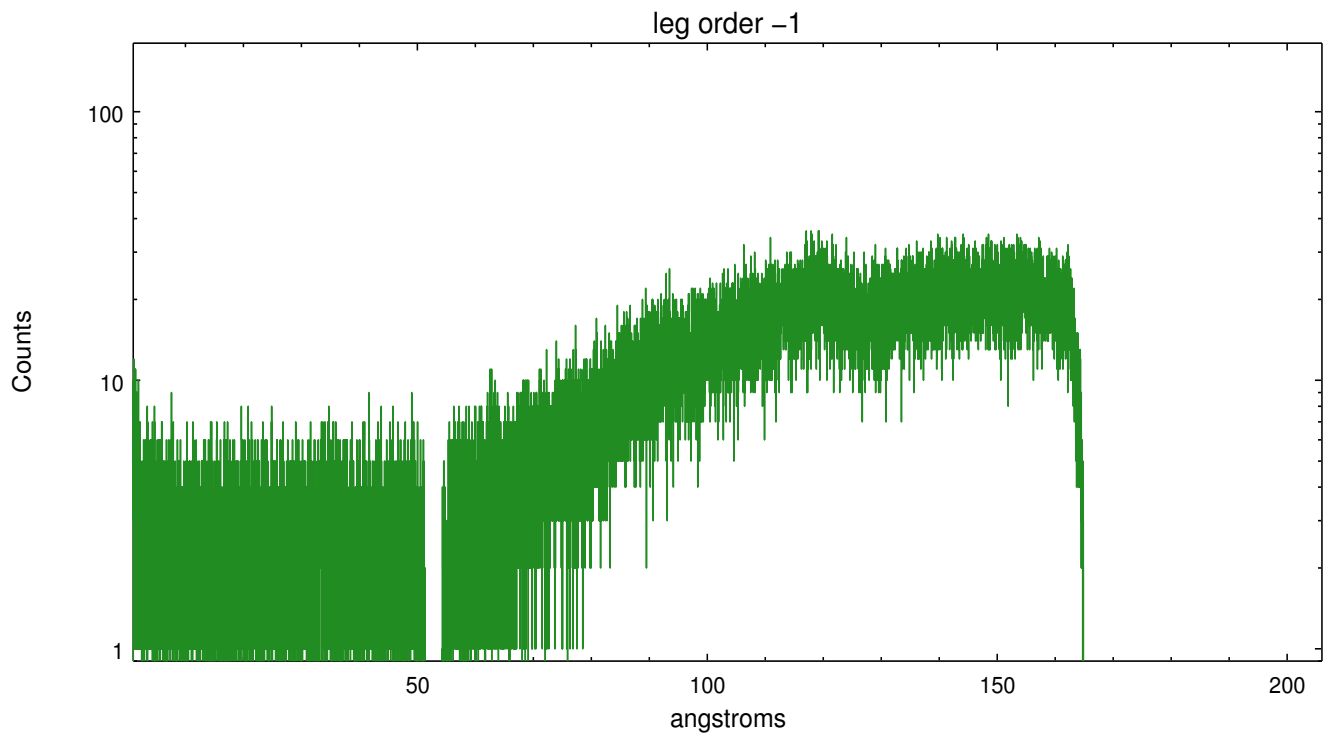


## 3 Gratings

### 3.1 LETG Arm



LETG Zero Order



# A Summary

## A.1 Status

V&V Scientist	Joy Nichols
V&V Date (YYYY-MM-DD)	2012.08.20
V&V Edition	1
V&V Disposition and Status	OK
V&V Charge Time	47.1684522

## A.2 Comments

Requested target coordinates were in error by 1 arcmin, resulting in the target being offset from the center of the detector. The target position was accurately found by the tool `tgdetect` and the spectral extraction region is centered on the dispersed spectrum. Custom extraction procedures will be needed to deal with the background since the source is near the edge of the detector.