

V&V Reference Report

L2 ASCDS Version : 8.4.4

Observation 9767 - L2 Version 2
Chandra X-Ray Center

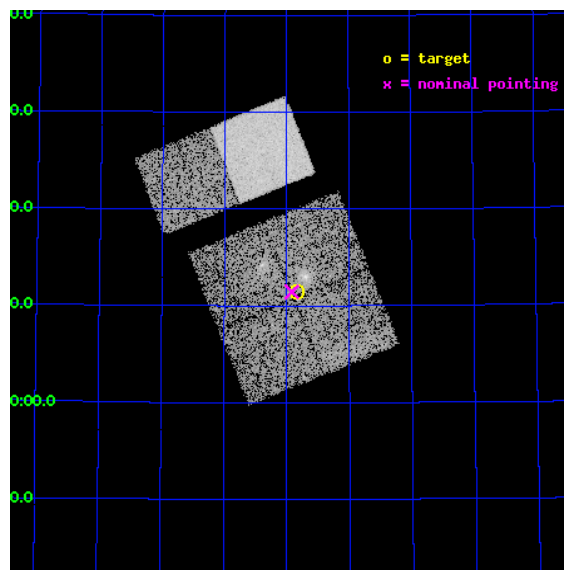
L2 Processing Date : May 5 2012

Contents

1	Front	2
2	OBI	3
2.1	OBI	3
2.1.1	Images	3
2.1.2	Bias	3
2.1.3	Parameters	4
2.1.4	Events	4
2.2	Compared Parameters	5
2.3	Aspect	6
2.4	Star Slots	9
2.4.1	Slot 3	9
2.4.2	Slot 4	10
2.4.3	Slot 5	11
2.4.4	Slot 6	12
2.4.5	Slot 7	13
2.5	FID Slots	14
2.5.1	Slot 0	14
2.5.2	Slot 1	15
2.5.3	Slot 2	16
A	Summary	17
A.1	Status	17
A.2	Comments	17

1 Front

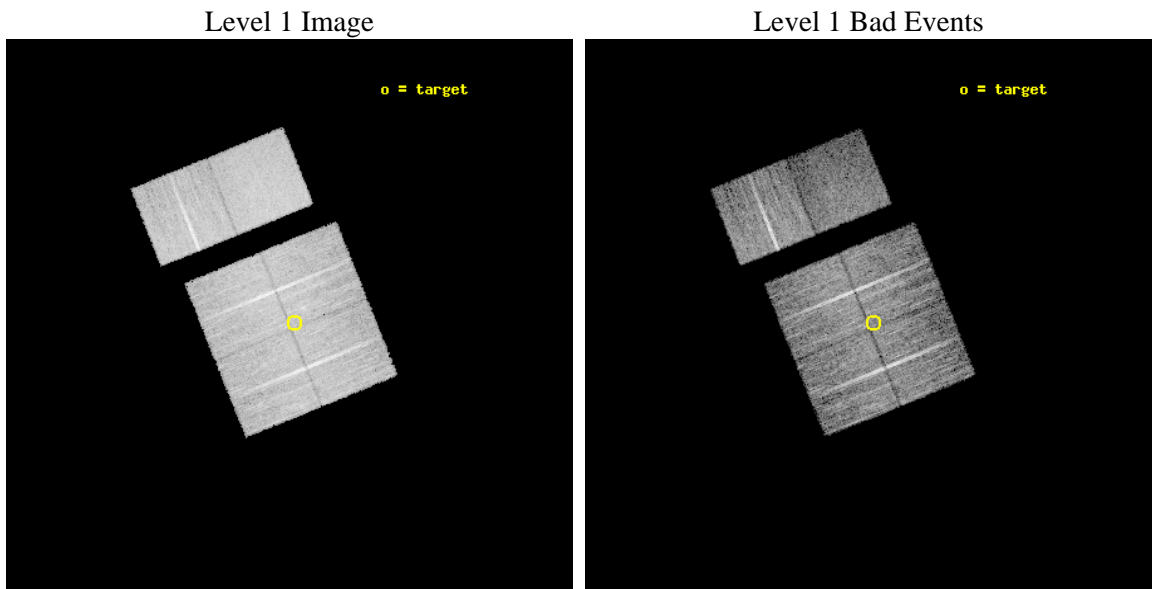
seq_num	900576	Sequence number
obs_id	9767	Observation id
title	AGN in the Cosmic Web: A Proto-Cluster at z=2.3	Proposal title
observer	Prof Kirpal Nandra	Principal investigator
object	HS 1700+643	Source name
dtcycle	0	
cycle	P	events from which exps? Prim/Second/Both
ra_targ	255.210833	Observer's specified target RA [deg]
dec_targ	64.191417	Observer's specified target Dec [deg]
ra_nom	255.22925519188	Nominal RA [deg]
dec_nom	64.190822833891	Nominal Dec [deg]
roll_nom	337.99209561081	Nominal Roll [deg]
revision	2	Processing version of data
ontime	9155.1999659538	Sum of GTIs [s]
liveltime	9039.2713113853	Livetime [s]
ontime0	9155.1999659538	Sum of GTIs [s]
ontime1	9155.1999659538	Sum of GTIs [s]
ontime2	9155.1999659538	Sum of GTIs [s]
ontime3	9155.1999659538	Sum of GTIs [s]
ontime6	9151.9589657187	Sum of GTIs [s]
ontime7	9155.1999659538	Sum of GTIs [s]
l2events	69637	Number of level 2 events



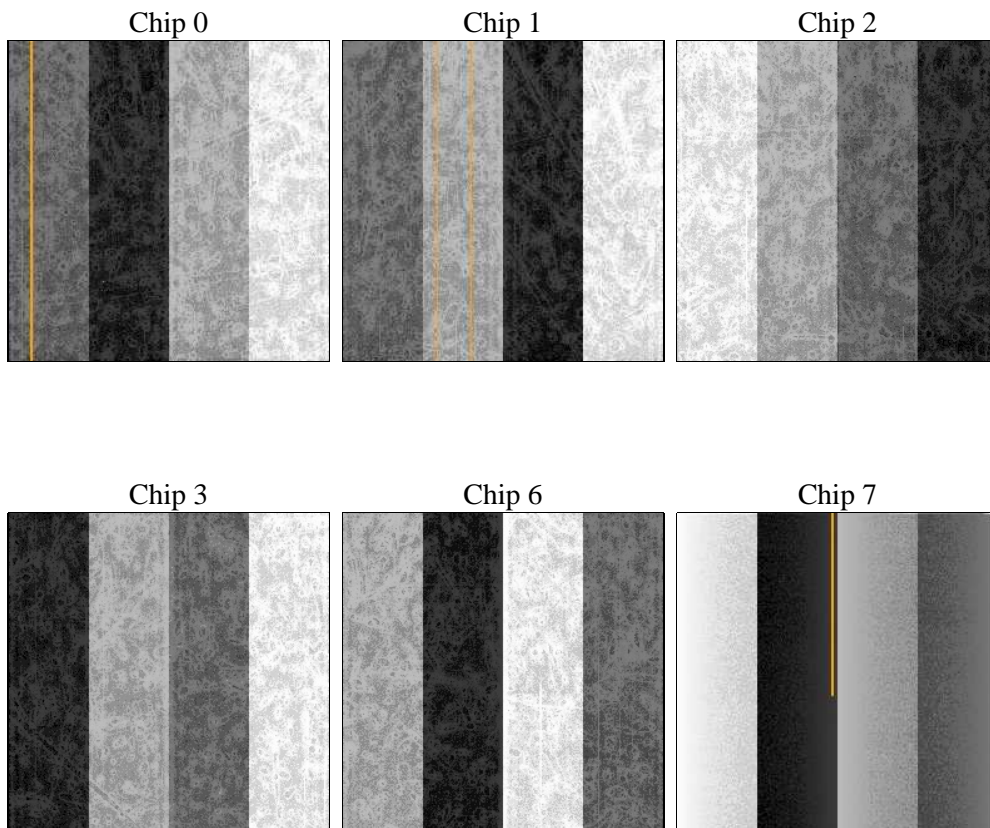
2 OBI

2.1 OBI

2.1.1 Images



2.1.2 Bias



2.1.3 Parameters

obi_num	0	Obi number	sched_exp_time	9400.000000	[s] Scheduled observation exposure time
ascdsver	8.4.4	Processing system revision	ontime	9155.1999659538	Sum of GTIs [s]
caldsver	4.4.9	 	ontime0	9155.1999659538	Sum of GTIs [s]
date	2012-05-05T05:12:29	Date and time of file creation	ontime1	9155.1999659538	Sum of GTIs [s]
revision	2	Processing version of data	ontime2	9155.1999659538	Sum of GTIs [s]
			ontime3	9155.1999659538	Sum of GTIs [s]
			ontime6	9151.9589657187	Sum of GTIs [s]
			ontime7	9155.1999659538	Sum of GTIs [s]
			l1events	433683	Number of level 1 events

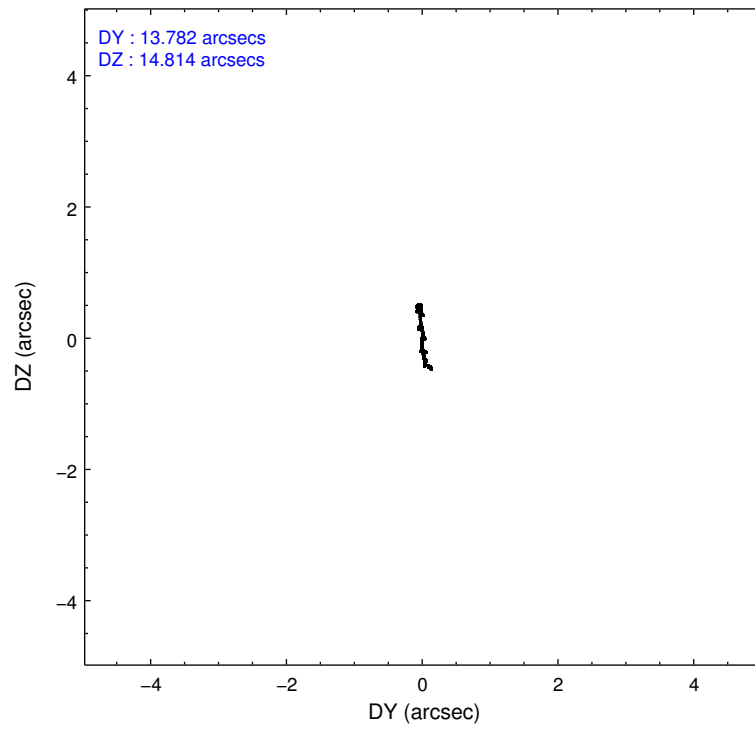
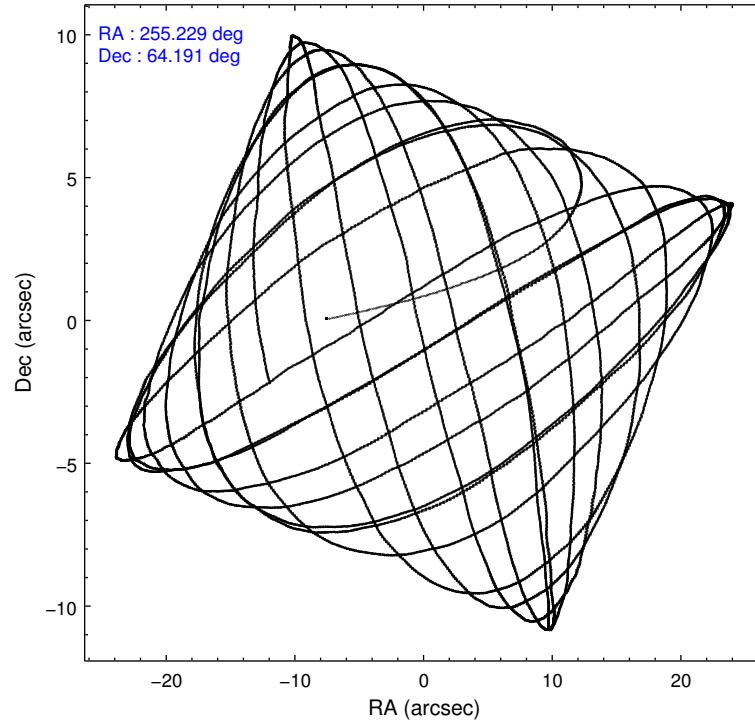
2.1.4 Events

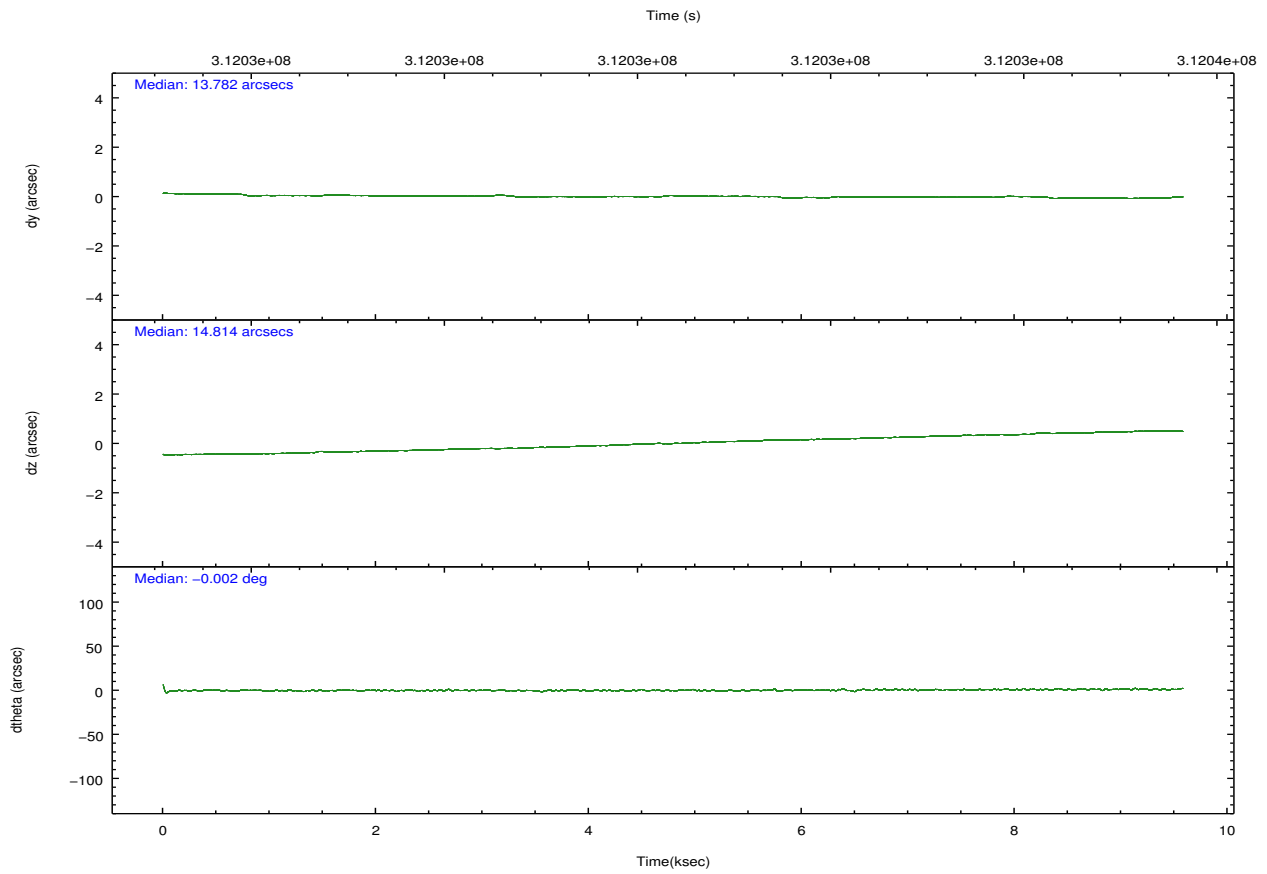
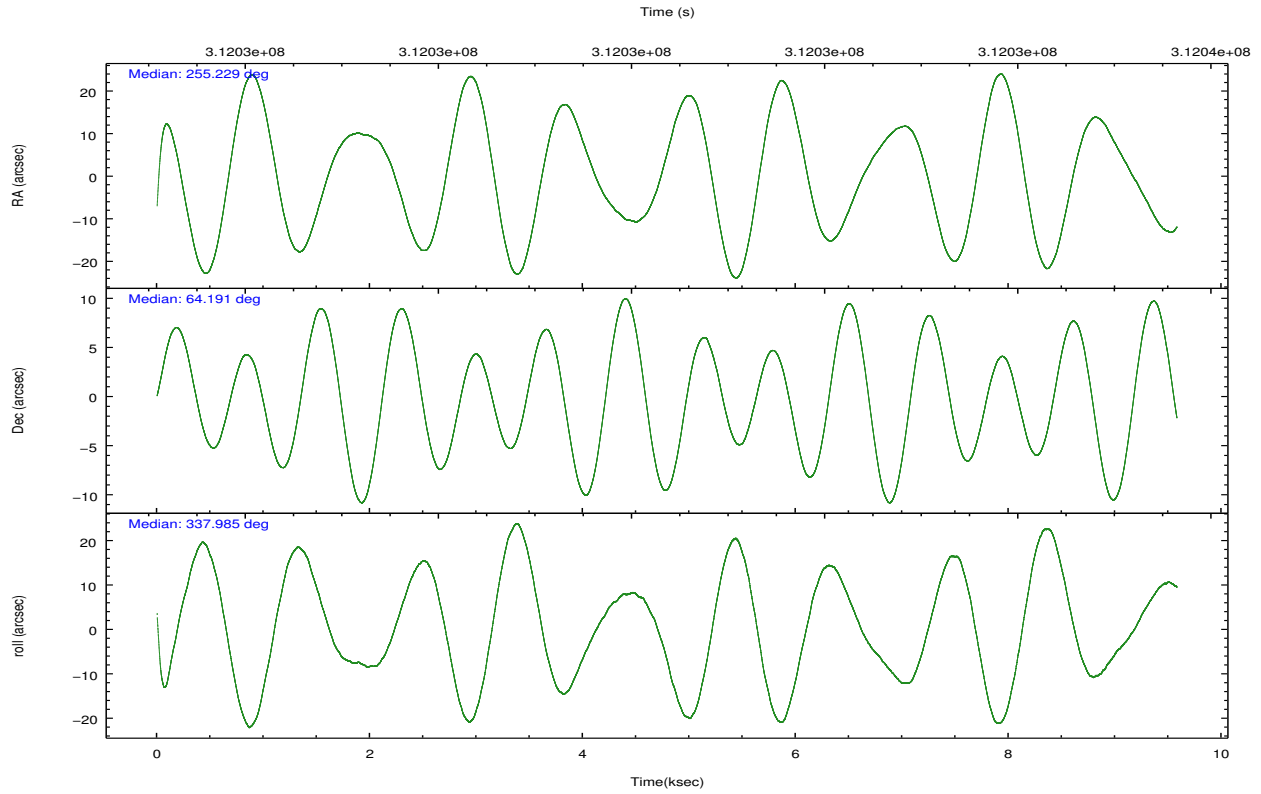
	ccd 0	ccd 1	ccd 2	ccd 3	ccd 6	ccd 7		ccd 0	ccd 1	ccd 2	ccd 3	ccd 6	ccd 7
level 1 events	68161	65652	75005	69088	74251	81526	grade 0 events	2586	2961	3302	3230	2901	3603
rejected events	60981	57606	67238	61477	66450	43304		3%	4%	4%	4%	3%	4%
rejected %	89%	87%	89%	88%	89%	53%	grade 1 events	32	29	47	39	42	102
								0%	0%	0%	0%	0%	0%
							grade 2 events	1688	1746	1682	1454	1629	7616
								2%	2%	2%	2%	2%	9%
							grade 3 events	785	879	772	744	803	3367
								1%	1%	1%	1%	1%	4%
							grade 4 events	768	820	753	797	772	3224
								1%	1%	1%	1%	1%	3%
							grade 5 events	2438	2684	2211	2807	2955	8030
								3%	4%	2%	4%	3%	9%
							grade 6 events	1357	1646	1267	1389	1703	20444
								1%	2%	1%	2%	2%	25%
							grade 7 events	58507	54887	64971	58628	63446	35140
								85%	83%	86%	84%	85%	43%

2.2 Compared Parameters

Parameter	Planned	Actual	Parameter	Planned	Actual
Instrument	ACIS	ACIS	Obspar format version number	7	7
Detector	ACIS-012367	ACIS-012367	Obspar file type	PREDICTED	ACTUAL
Grating	NONE	NONE	Obspar update status	NONE	UPDATED
Data mode	VFAINT	VFAINT	CCD I0 on	Y	Y
Observation mode	POINTING	POINTING	CCD I1 on	Y	Y
[deg] Pointing RA	255.166840	255.2292551918849	CCD I2 on	Y	Y
[deg] Pointing Dec	64.186820	64.19082283389096	CCD I3 on	Y	Y
[deg] Pointing Roll	337.839603	337.9920956108051	CCD S0 on	N	N
[mm] SIM focus pos	-0.782348	-0.7809083437167272	CCD S1 on	N	N
[mm] SIM defocus	0	0.001439871863259334	CCD S2 on	Y	Y
[mm] SIM translation stage pos	-233.592463	-233.5874344608287	CCD S3 on	O1	Y
[mm] SIM translation stage offset	0	-0.005018542100998502	CCD S4 on	N	N
[s] Observation start time (MET)	312025755.184000	312024812.78327	CCD S5 on	N	N
Observation start date	2007-11-21T09:48:10	2007-11-21T09:33:32	Number of optional ACIS chips dropped	0	0
[s] Observation end time (MET)	312035155.184000	312035905.8463	On-chip summing requested	N	N
Observation end date	2007-11-21T12:24:50	2007-11-21T12:38:25	Subarray requested	NONE	NONE
Read mode	TIMED	TIMED	Alternating exposures requested	N	N
			[s] Primary exposure time	0.000000	3.2

2.3 Aspect



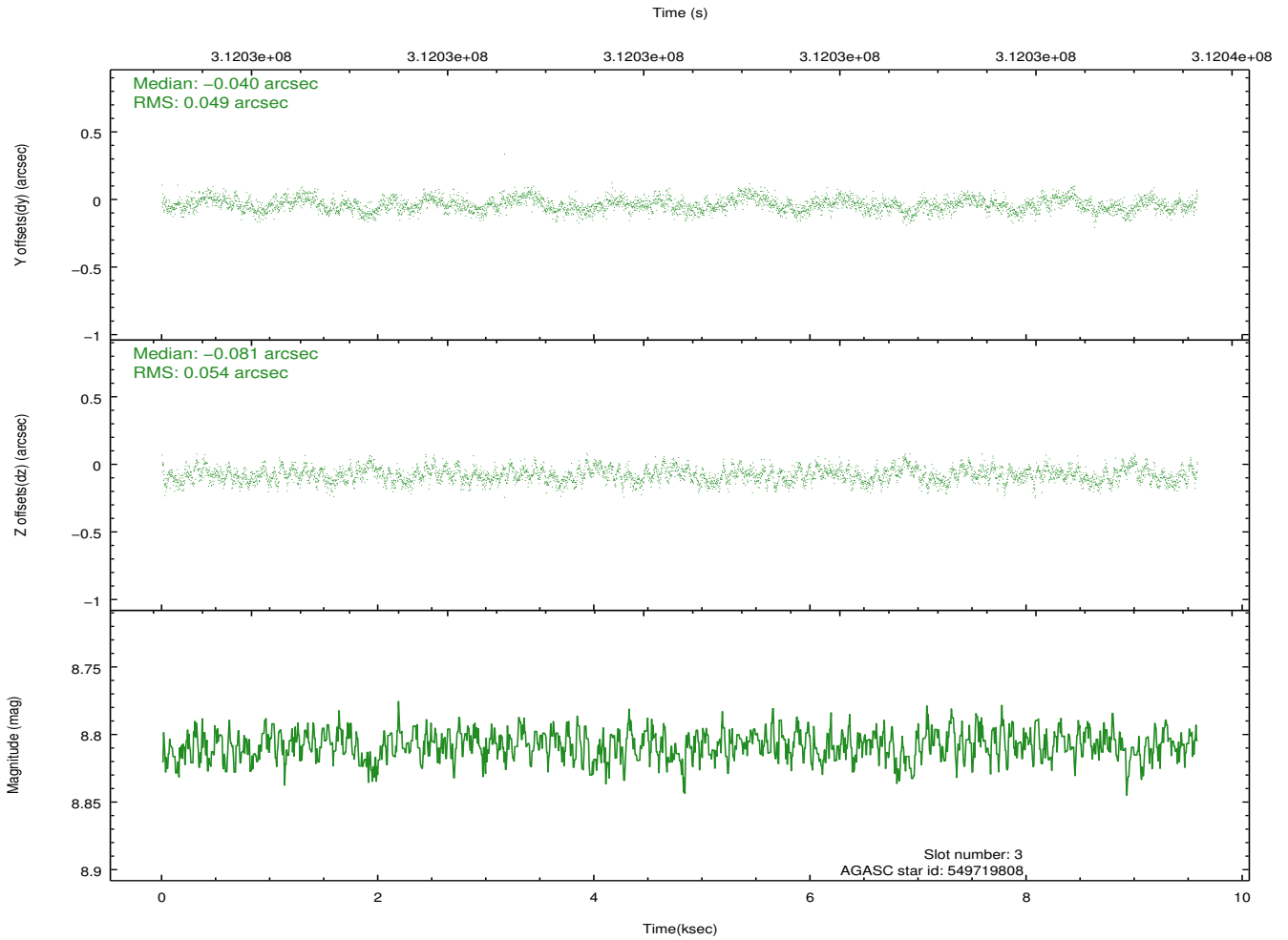
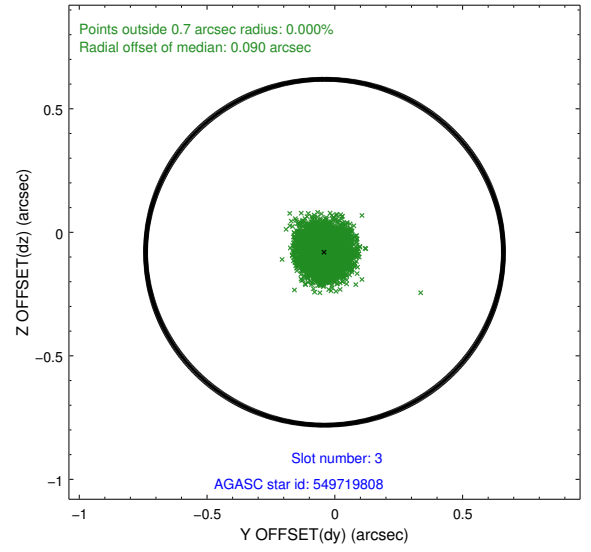
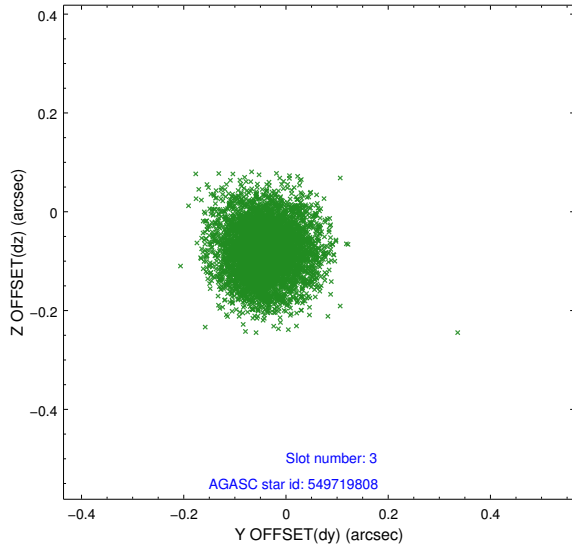


Slot Statistics

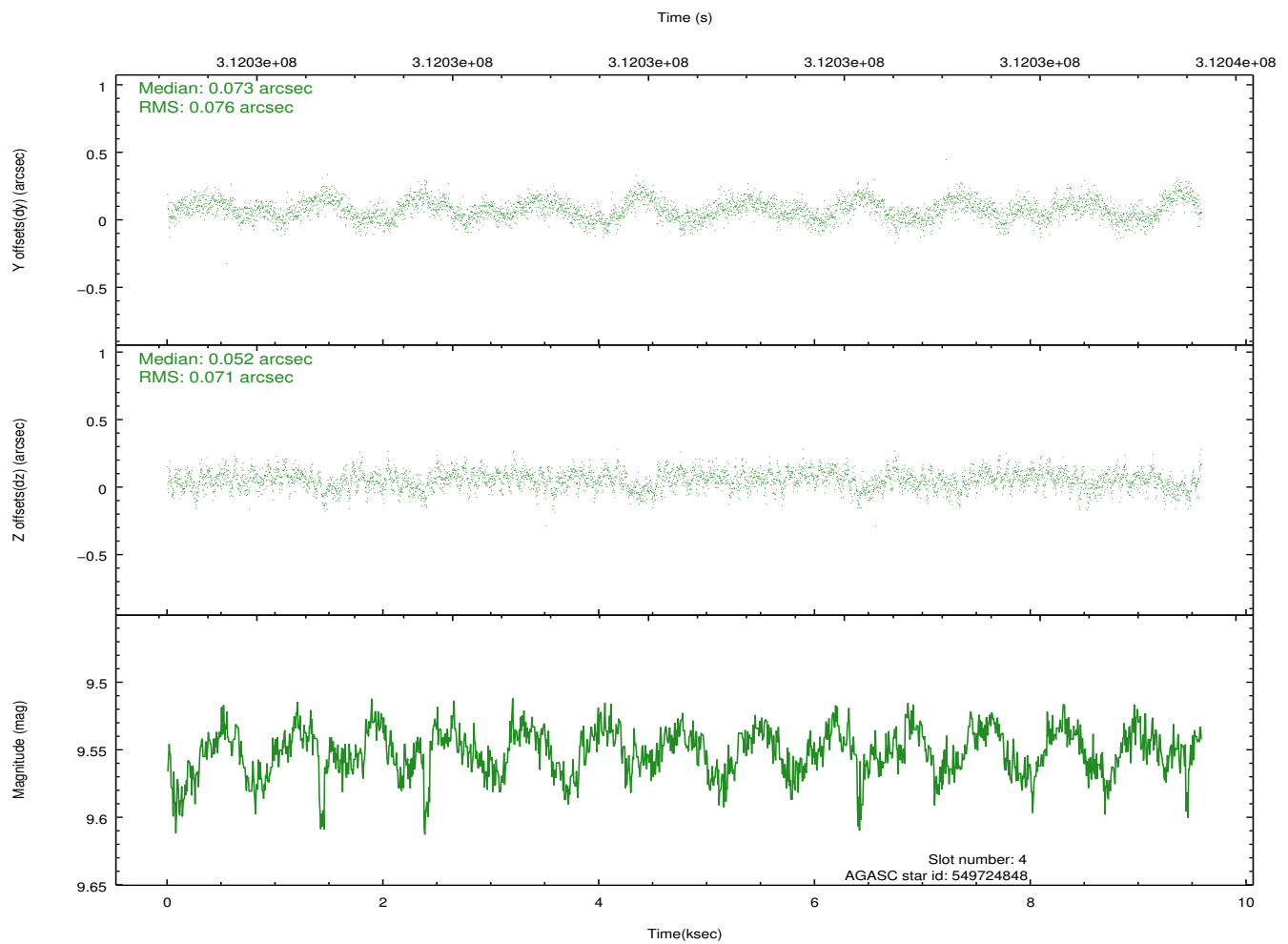
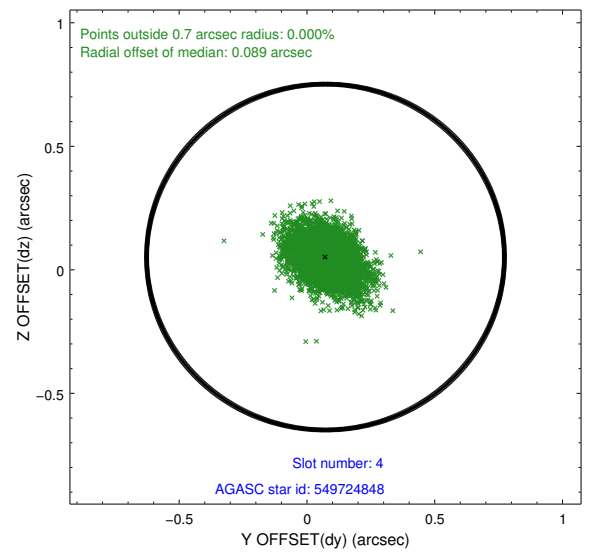
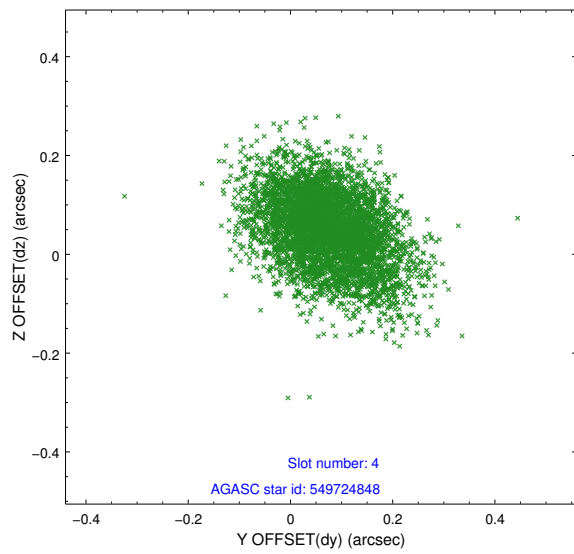
slot	status	id	mag	n_pts	med_dy	med_dz	dr1	dr2	ra	dec	mean_y	mean_z
0	FID	ACIS-I-1	7.23	2337	-0.009	-0.010	0.024	0.034	0.000000	0.000000	925.70	-838.42
1	FID	ACIS-I-4	7.15	2337	0.185	0.035	0.016	0.024	0.000000	0.000000	2146.25	1061.15
2	FID	ACIS-I-5	7.22	2337	-0.274	0.045	0.010	0.016	0.000000	0.000000	-1821.85	1059.65
3	GUIDE	549719808	8.81	4671	-0.040	-0.081	0.078	0.122	255.292775	64.694097	-509.03	1764.54
4	GUIDE	549724848	9.55	4671	0.073	0.052	0.109	0.182	255.389284	63.950133	647.59	-655.30
5	GUIDE	549726784	8.97	4674	0.009	0.019	0.098	0.156	255.680869	64.026795	967.48	-224.72
6	GUIDE	549726944	8.19	4674	-0.044	-0.196	0.085	0.140	254.598381	64.304516	-982.93	61.20
7	GUIDE	549728568	9.33	4667	0.003	0.217	0.100	0.161	253.813006	64.122814	-1890.91	-994.69

2.4 Star Slots

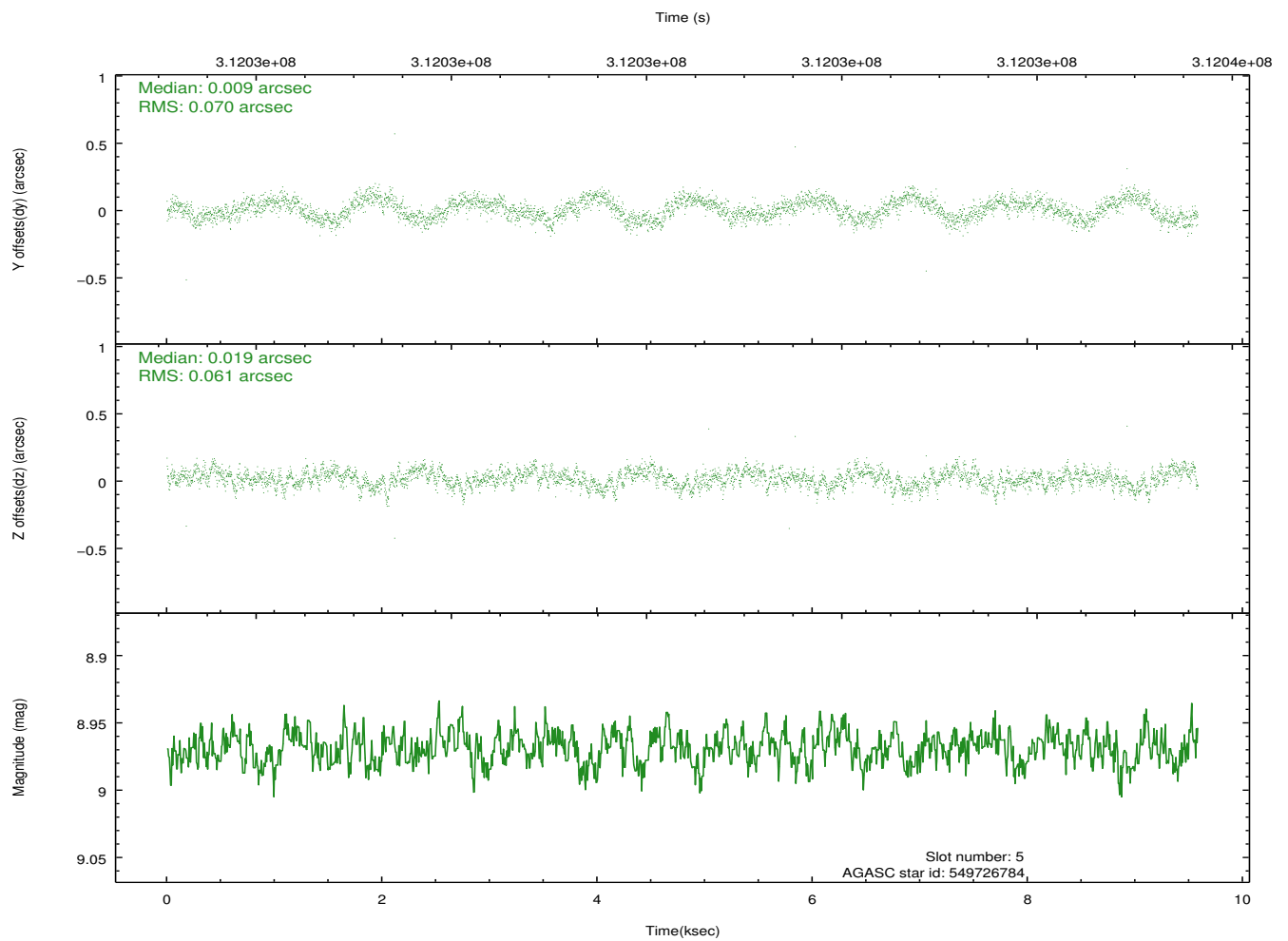
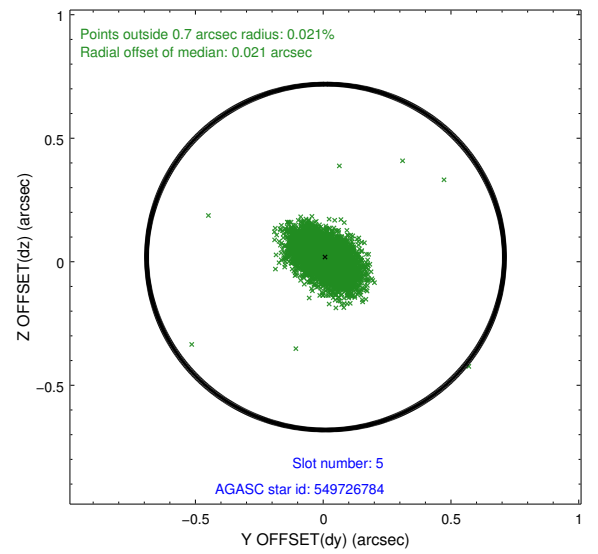
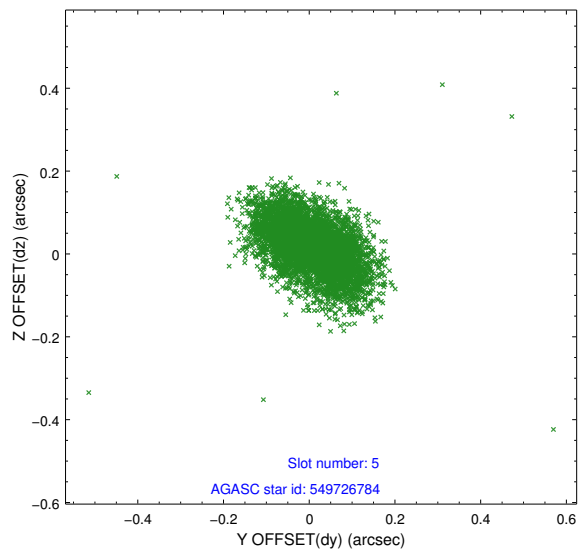
2.4.1 Slot 3



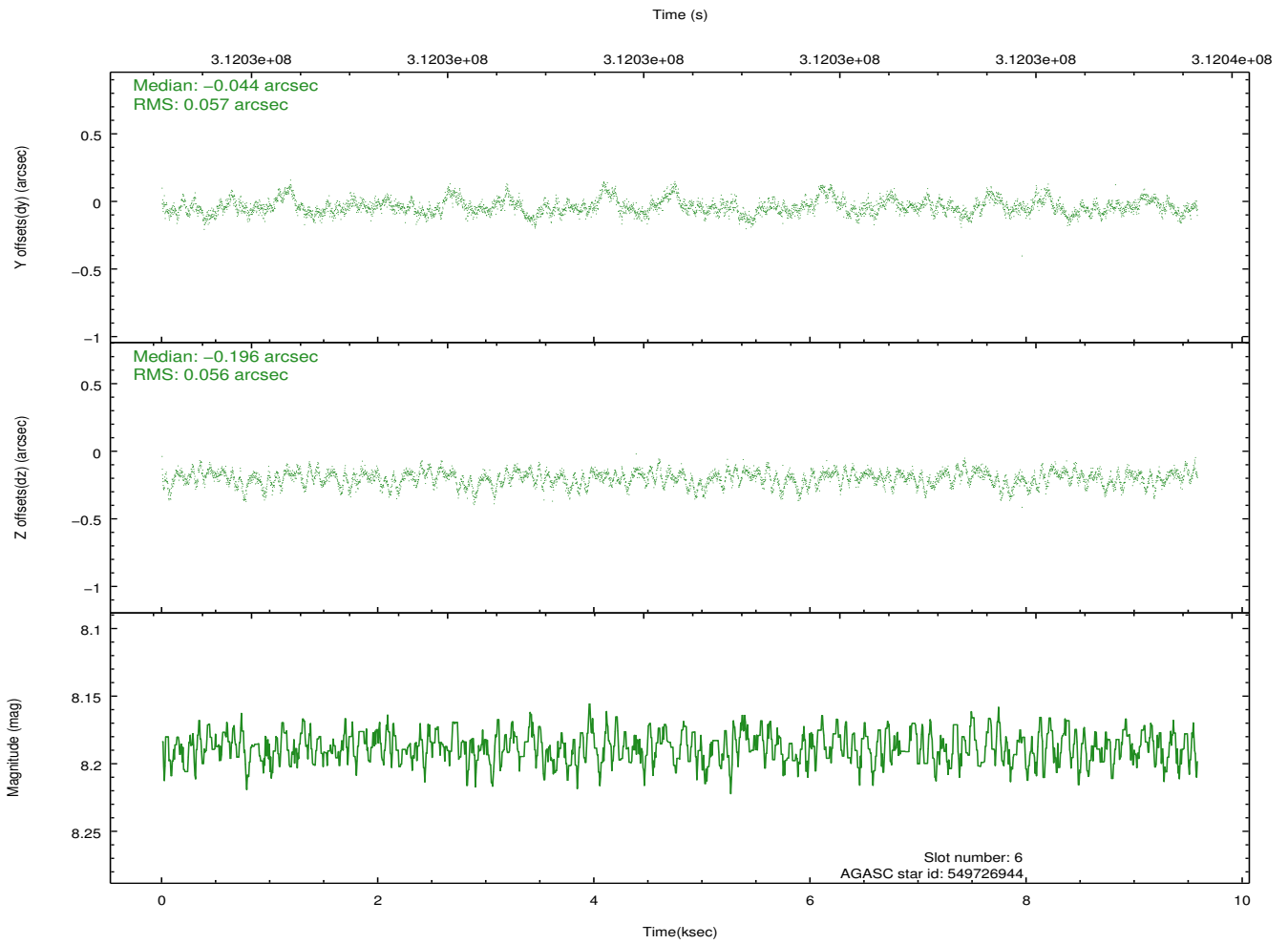
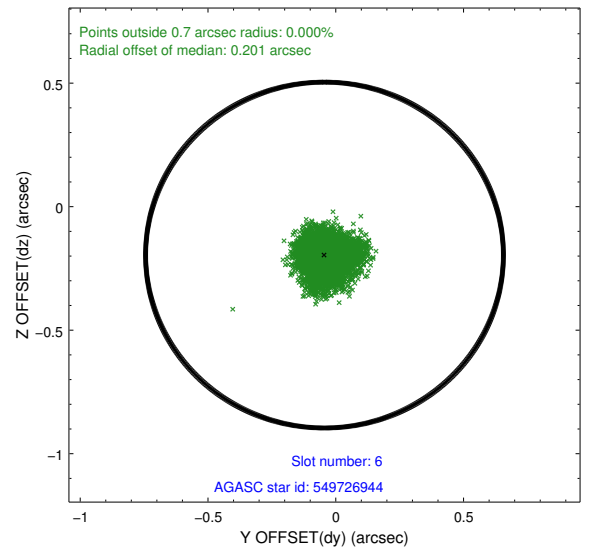
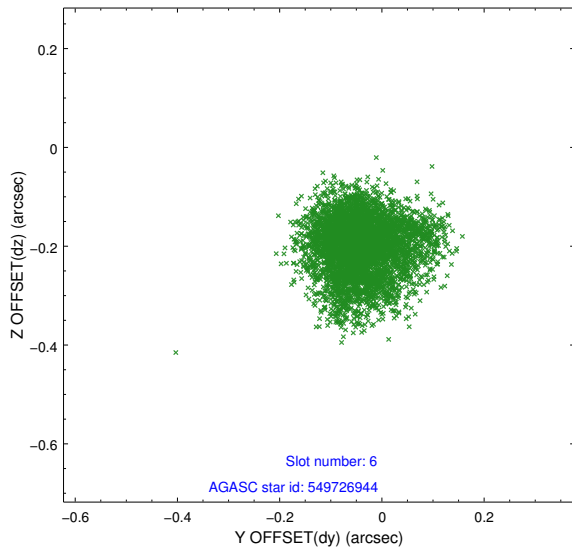
2.4.2 Slot 4



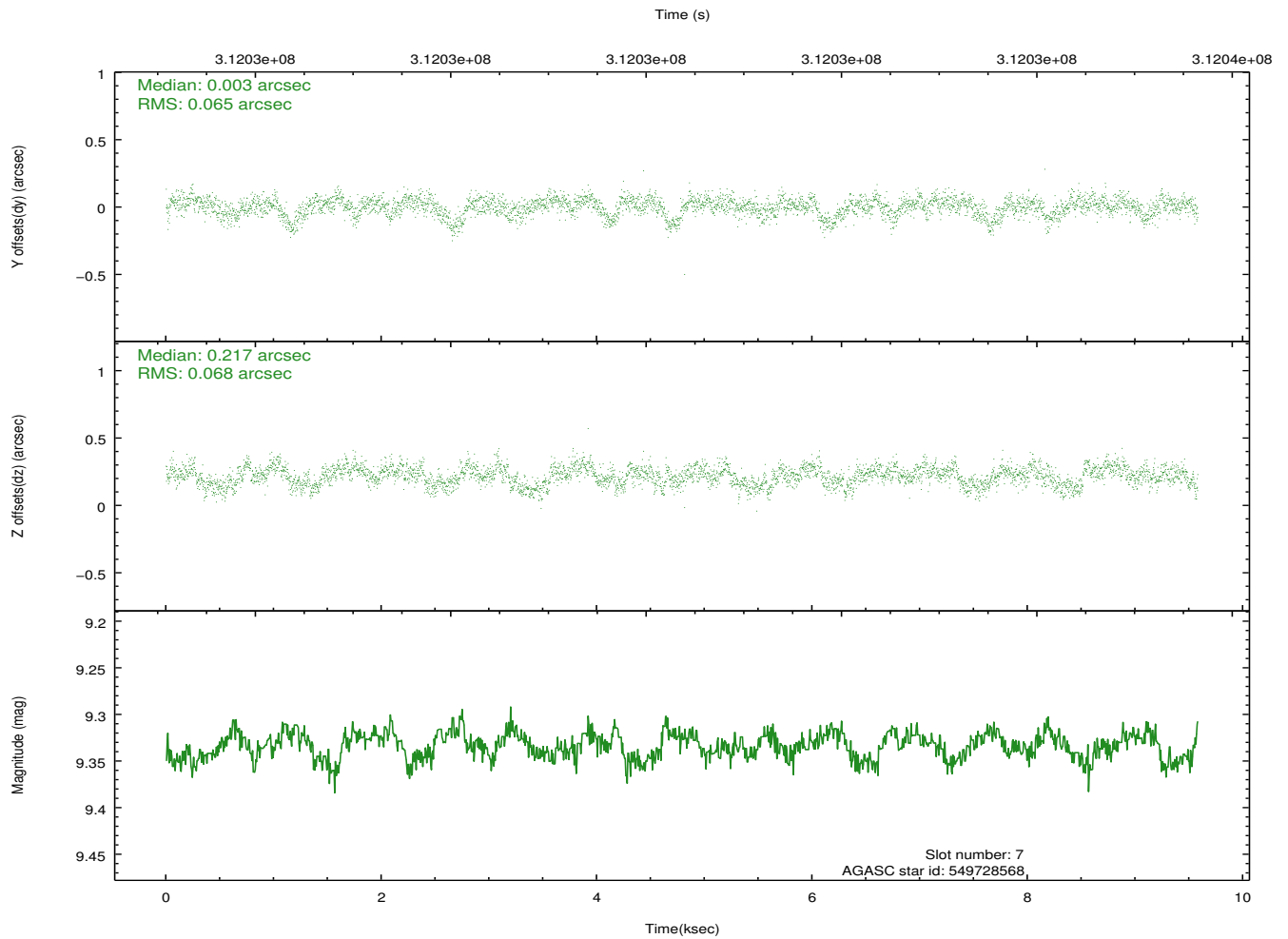
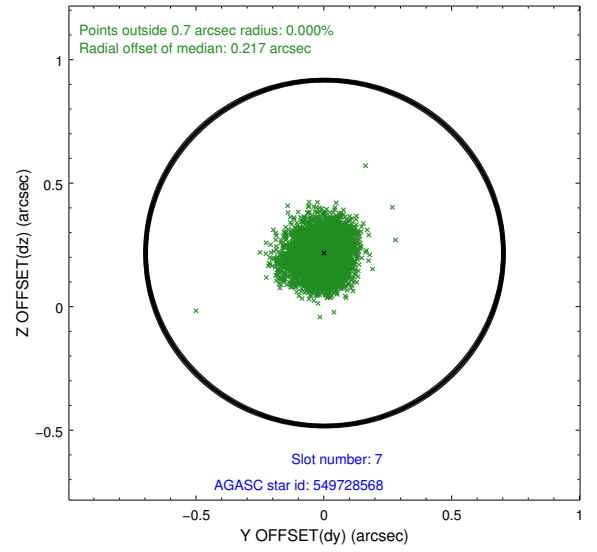
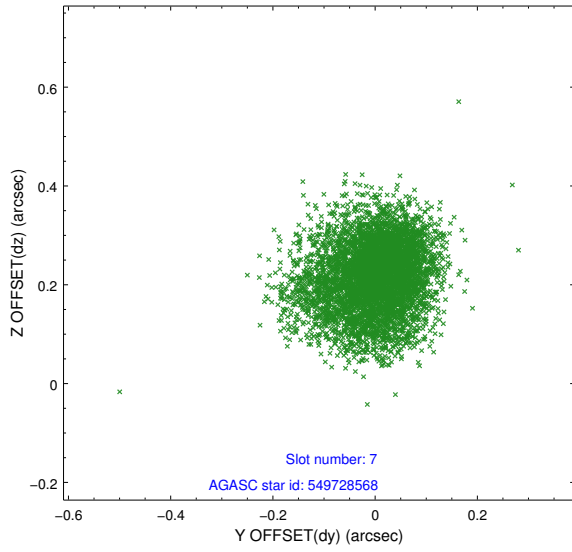
2.4.3 Slot 5



2.4.4 Slot 6

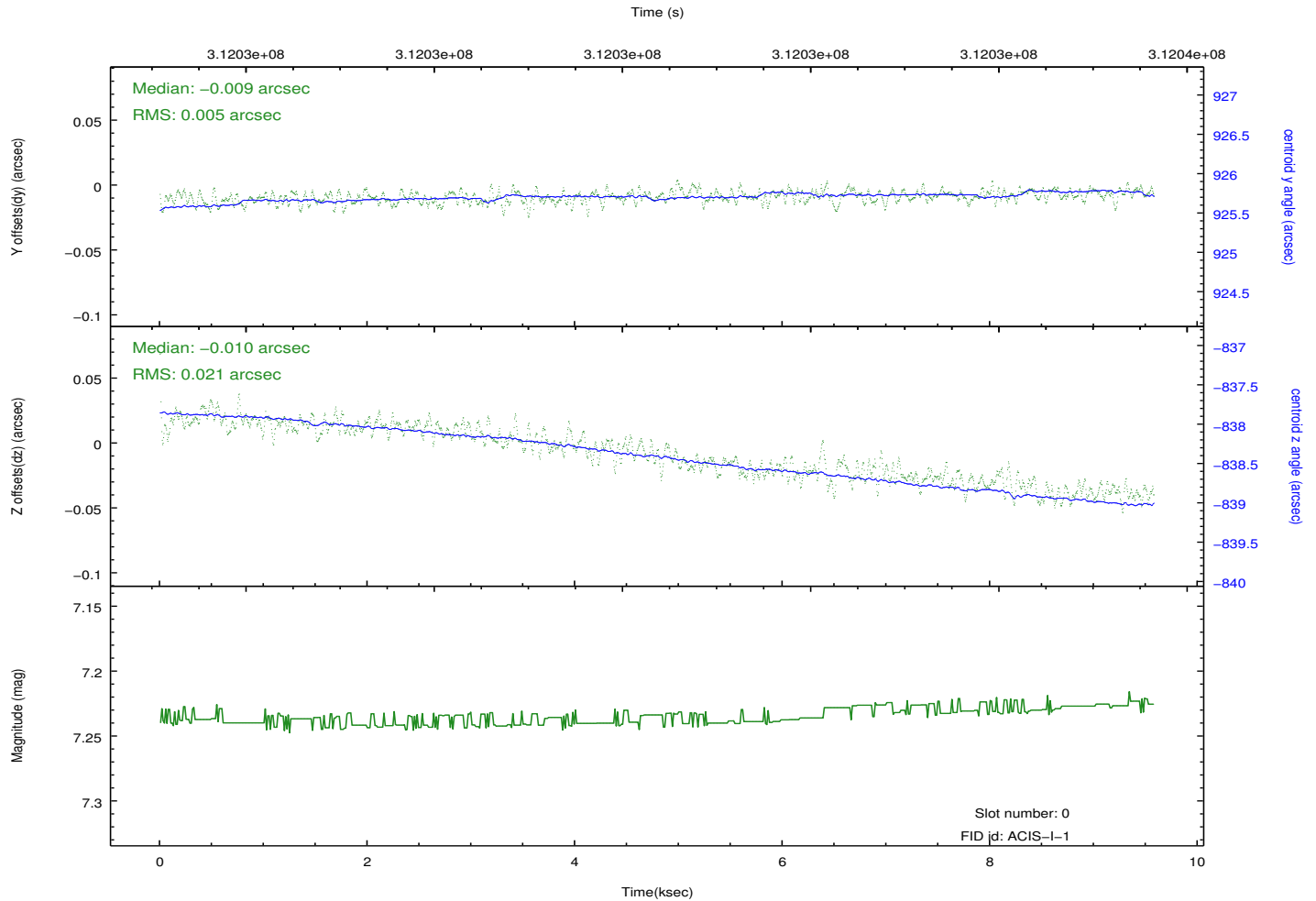
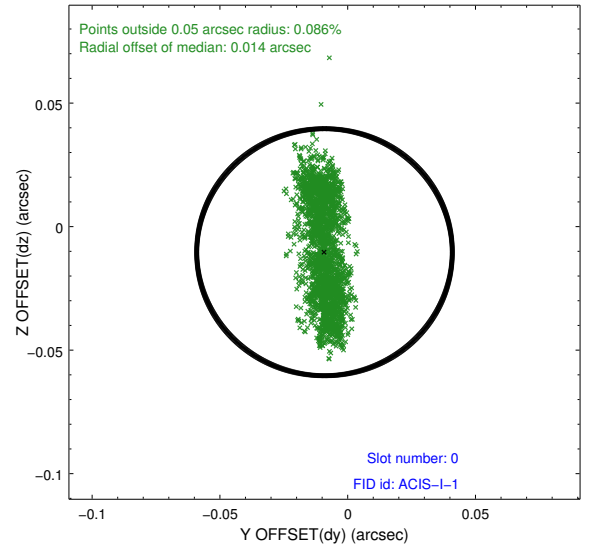
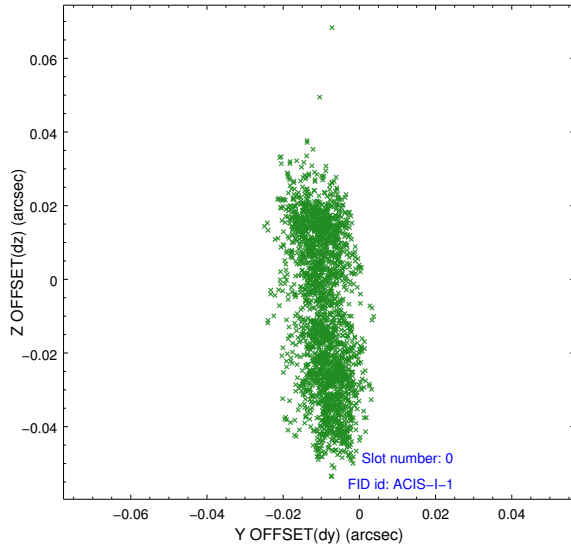


2.4.5 Slot 7

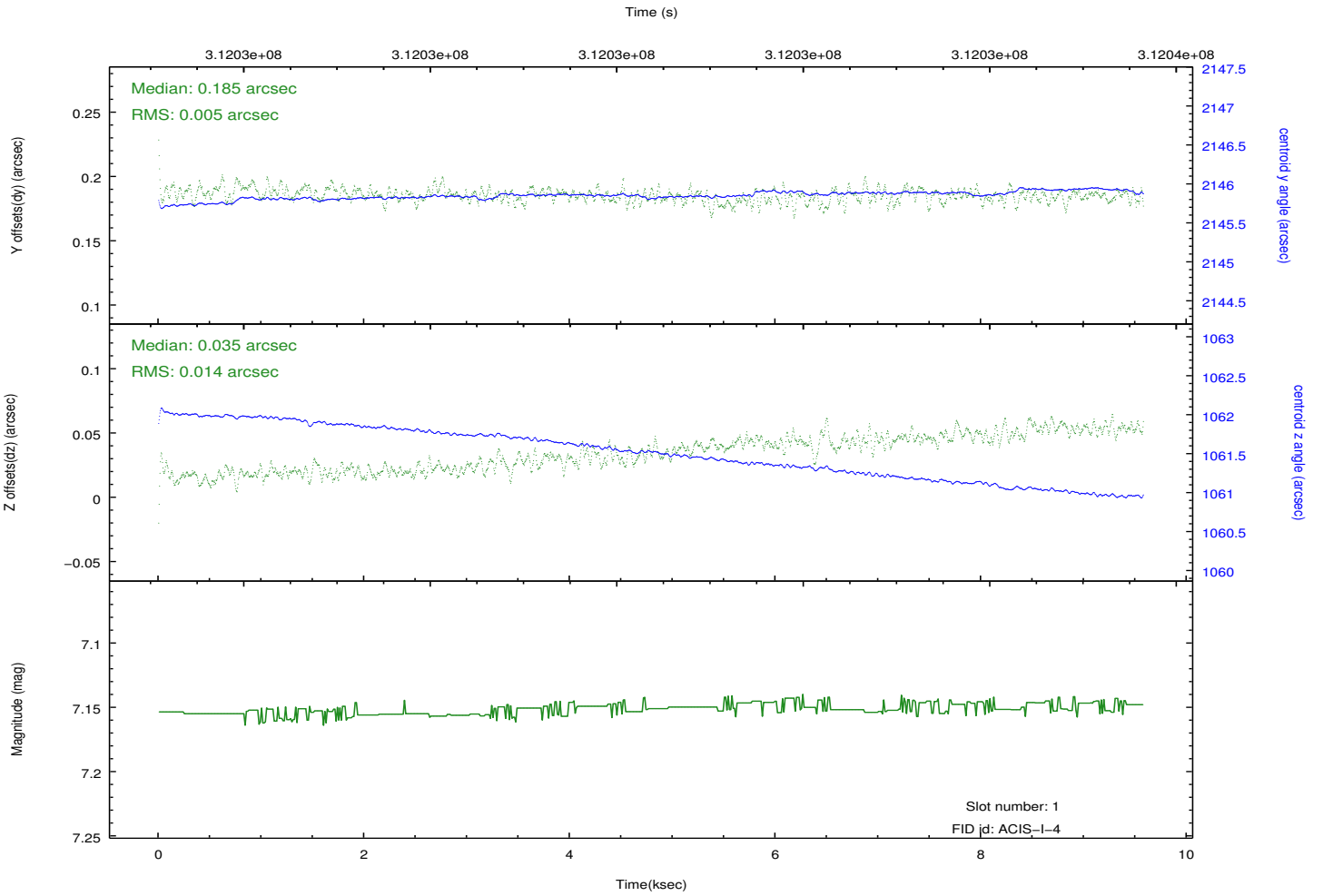
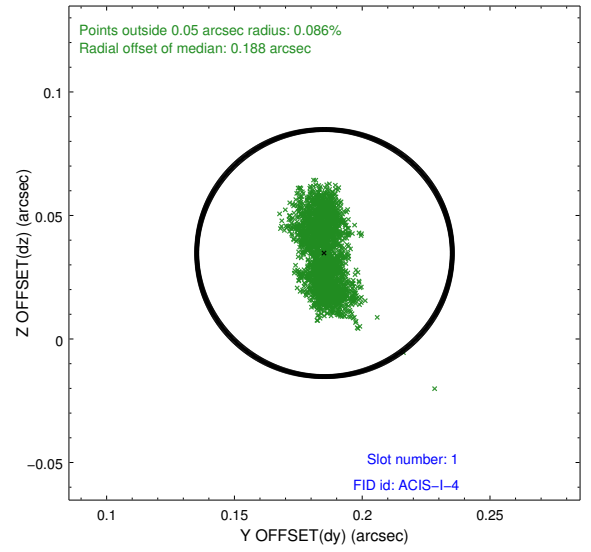
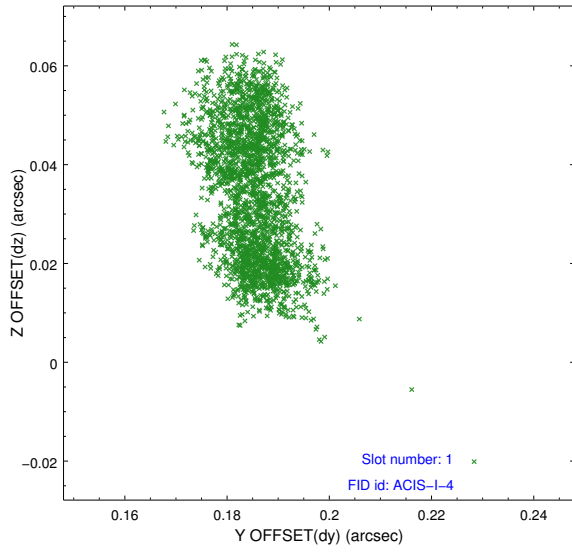


2.5 FID Slots

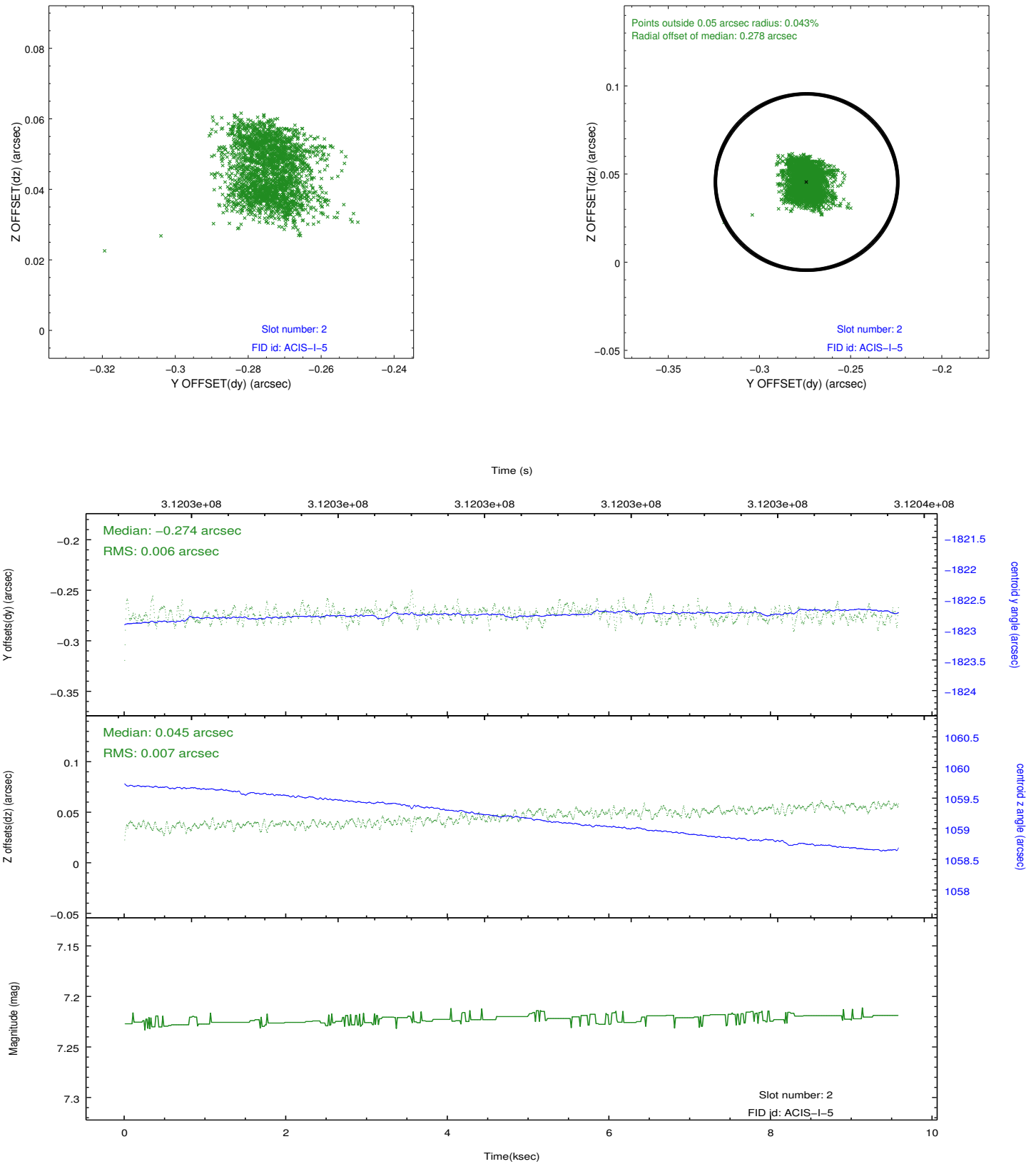
2.5.1 Slot 0



2.5.2 Slot 1



2.5.3 Slot 2



A Summary

A.1 Status

V&V Scientist	Jen Lauer
V&V Date (YYYY-MM-DD)	2012.05.07
V&V Edition	1
V&V Disposition and Status	OK
V&V Charge Time	9.15519996

A.2 Comments

Roll preference met.