

V&V Reference Report

L2 ASCDS Version : 8.4.5

Observation 10118 - L2 Version 2
Chandra X-Ray Center

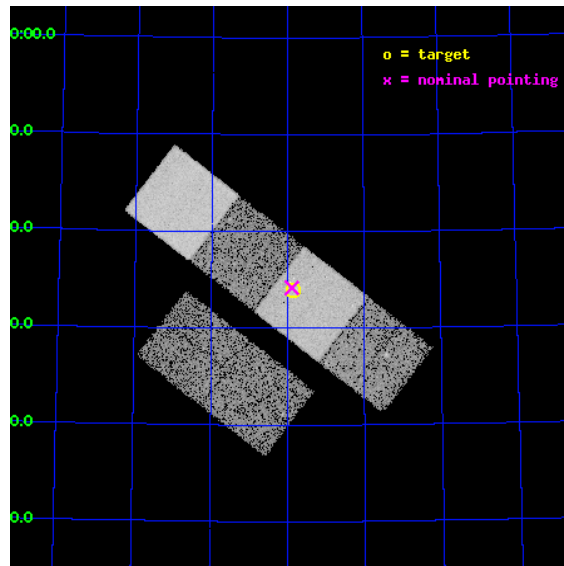
L2 Processing Date : Jun 28 2012

Contents

1	Front	2
2	OBI	3
2.1	OBI	3
2.1.1	Images	3
2.1.2	Bias	3
2.1.3	Parameters	4
2.1.4	Events	4
2.2	Compared Parameters	5
2.3	Aspect	6
2.4	Star Slots	9
2.4.1	Slot 3	9
2.4.2	Slot 4	10
2.4.3	Slot 5	11
2.4.4	Slot 6	12
2.4.5	Slot 7	13
2.5	FID Slots	14
2.5.1	Slot 0	14
2.5.2	Slot 1	15
2.5.3	Slot 2	16
A	Summary	17
A.1	Status	17
A.2	Comments	17

1 Front

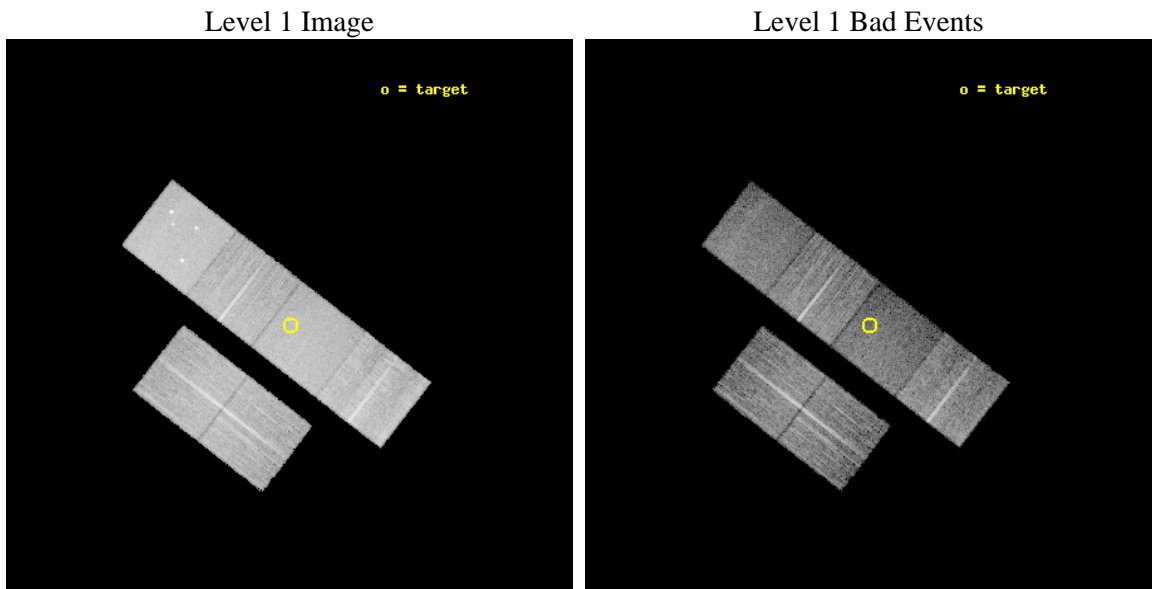
seq_num	501045	Sequence number
obs_id	10118	Observation id
title	Chandra Observations of New X-ray Supernovae	Proposal title
observer	Prof. David Pooley	Principal investigator
object	SN 2008ij	Source name
dtycycle	0	
cycle	P	events from which exps? Prim/Second/Both
ra_targ	274.965875	Observer's specified target RA [deg]
dec_targ	74.56525	Observer's specified target Dec [deg]
ra_nom	274.97214046577	Nominal RA [deg]
dec_nom	74.569770595683	Nominal Dec [deg]
roll_nom	37.758688740452	Nominal Roll [deg]
revision	2	Processing version of data
ontime	9983.9999628663	Sum of GTIs [s]
livetime	9857.5765436935	Livetime [s]
ontime2	9983.9999628663	Sum of GTIs [s]
ontime3	9983.9999628663	Sum of GTIs [s]
ontime5	9983.9999628663	Sum of GTIs [s]
ontime6	9983.9999628663	Sum of GTIs [s]
ontime7	9983.9999628663	Sum of GTIs [s]
ontime8	9980.7590421438	Sum of GTIs [s]
l2events	128189	Number of level 2 events



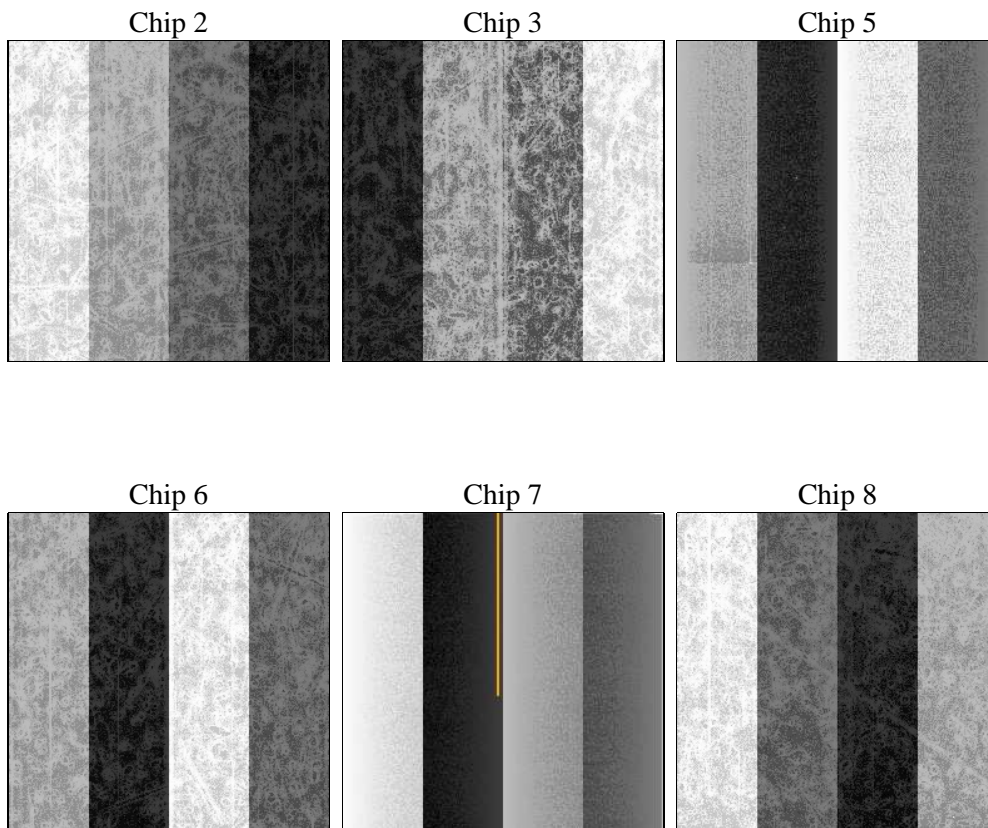
2 OBI

2.1 OBI

2.1.1 Images



2.1.2 Bias



2.1.3 Parameters

obi_num	0	Obi number	sched_exp_time	10000.000000	[s] Scheduled observation exposure time
ascdsver	8.4.5	Processing system revision	ontime	9983.9999628663	Sum of GTIs [s]
caldbver	4.5.0	 	ontime2	9983.9999628663	Sum of GTIs [s]
date	2012-06-28T12:47:49	Date and time of file creation	ontime3	9983.9999628663	Sum of GTIs [s]
revision	2	Processing version of data	ontime5	9983.9999628663	Sum of GTIs [s]
			ontime6	9983.9999628663	Sum of GTIs [s]
			ontime7	9983.9999628663	Sum of GTIs [s]
			ontime8	9980.7590421438	Sum of GTIs [s]
			l1events	573770	Number of level 1 events

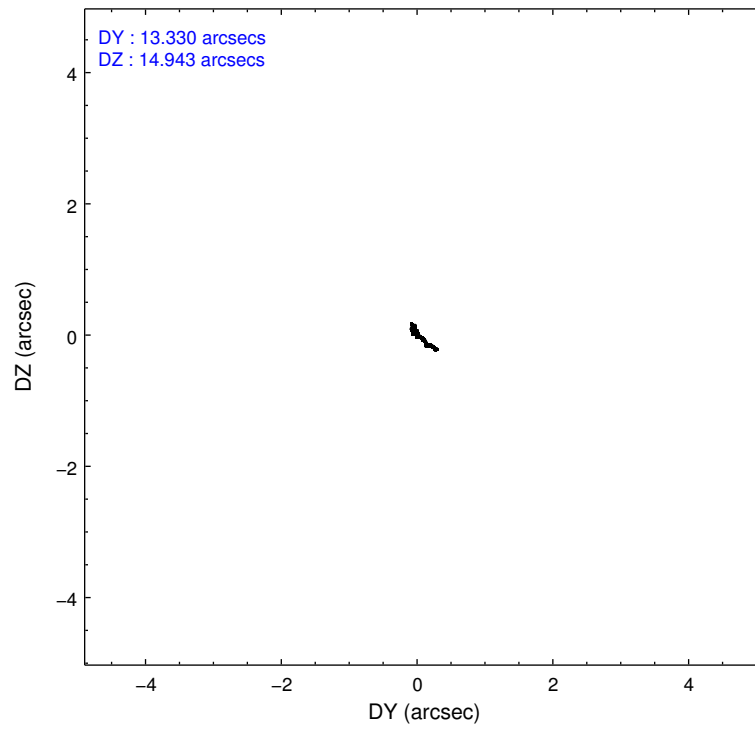
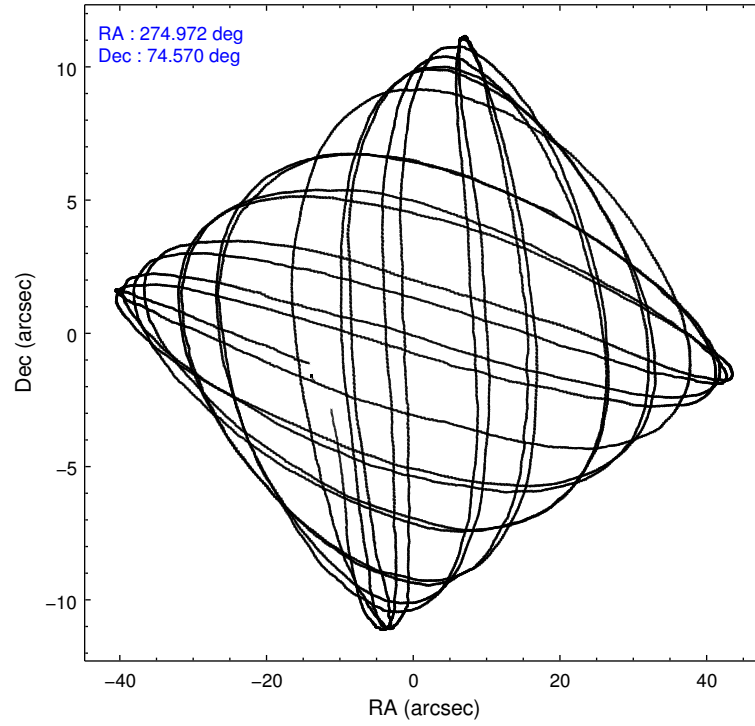
2.1.4 Events

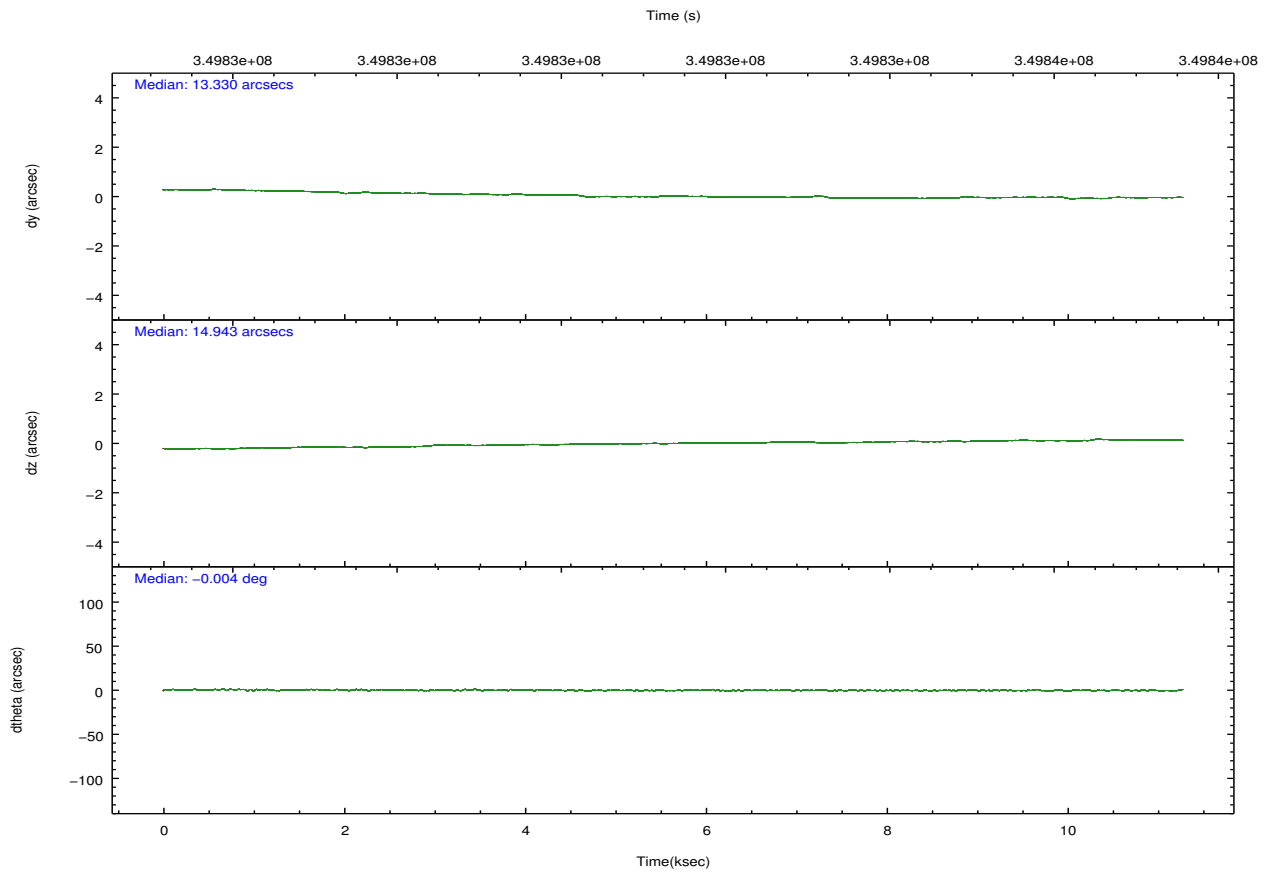
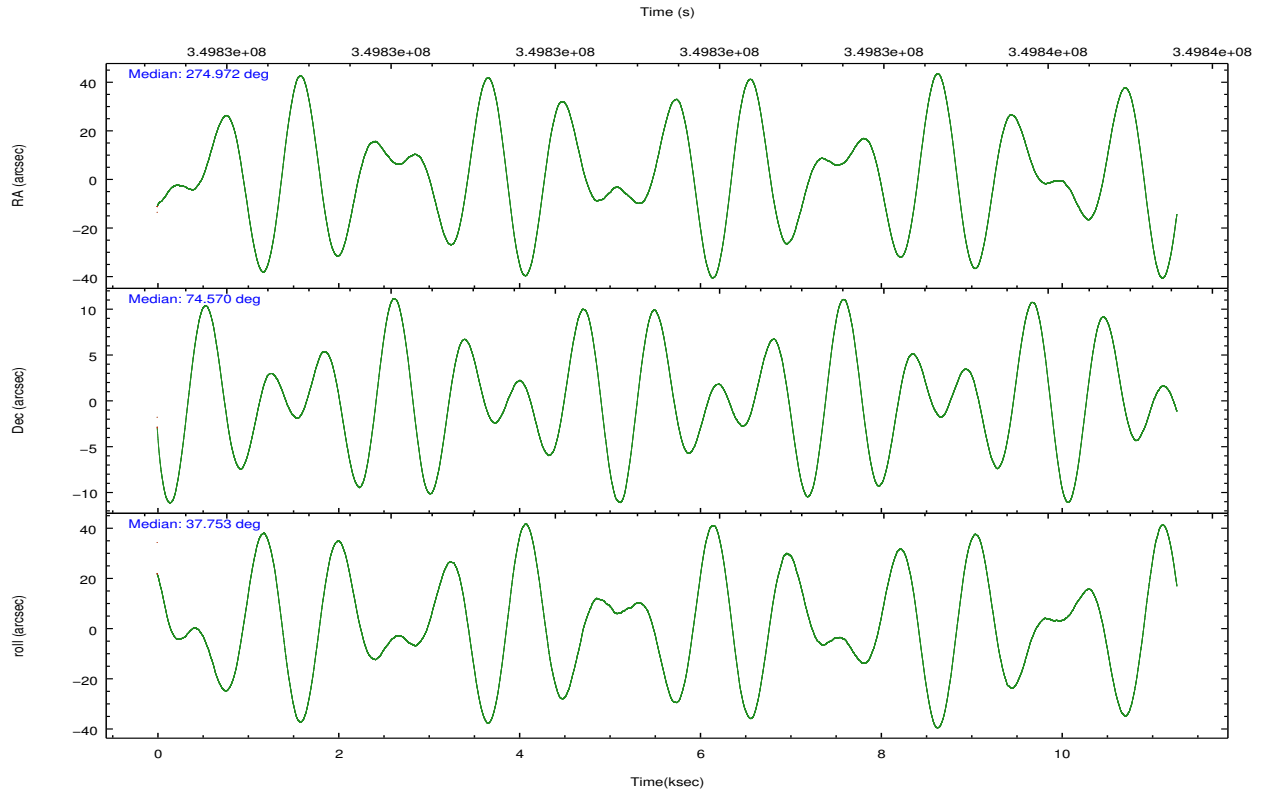
	ccd 2	ccd 3	ccd 5	ccd 6	ccd 7	ccd 8		ccd 2	ccd 3	ccd 5	ccd 6	ccd 7	ccd 8
level 1 events	87548	80097	118272	86046	95543	106264	grade 0 events	3033	2709	6805	3002	4261	8074
rejected events	79106	72392	58573	77327	51869	79981		3%	3%	5%	3%	4%	7%
rejected %	90%	90%	49%	89%	54%	75%	grade 1 events	60	50	257	47	143	76
								0%	0%	0%	0%	0%	0%
							grade 2 events	2046	1656	17386	2001	9056	5899
								2%	2%	14%	2%	9%	5%
							grade 3 events	867	922	2475	971	3901	2699
								0%	1%	2%	1%	4%	2%
							grade 4 events	877	851	2317	917	3889	2594
								1%	1%	1%	1%	4%	2%
							grade 5 events	2918	3405	9094	3393	10024	5082
								3%	4%	7%	3%	10%	4%
							grade 6 events	1625	1570	30736	1832	22585	7019
								1%	1%	25%	2%	23%	6%
							grade 7 events	76122	68934	49202	73883	41684	74821
								86%	86%	41%	85%	43%	70%

2.2 Compared Parameters

Parameter	Planned	Actual	Parameter	Planned	Actual
Instrument	ACIS	ACIS	Obspar format version number	7	7
Detector	ACIS-235678	ACIS-235678	Obspar file type	PREDICTED	ACTUAL
Grating	NONE	NONE	Obspar update status	NONE	UPDATED
Data mode	VFAINT	VFAINT	CCD I0 on	N	N
Observation mode	POINTING	POINTING	CCD I1 on	N	N
[deg] Pointing RA	274.934726	274.9721404657725	CCD I2 on	O2	Y
[deg] Pointing Dec	74.544325	74.56977059568281	CCD I3 on	O1	Y
[deg] Pointing Roll	37.638134	37.75868874045236	CCD S0 on	N	N
[mm] SIM focus pos	-0.684267	-0.6828225247311905	CCD S1 on	Y	Y
[mm] SIM defocus	0	0.001444936568705701	CCD S2 on	Y	Y
[mm] SIM translation stage pos	-190.132523	-190.1400660498719	CCD S3 on	Y	Y
[mm] SIM translation stage offset	0	0.00754346686406393	CCD S4 on	Y	Y
[s] Observation start time (MET)	349826996.184000	349824880.22979	CCD S5 on	N	N
Observation start date	2009-01-31T22:08:50	2009-01-31T21:34:40	Number of optional ACIS chips dropped	0	0
[s] Observation end time (MET)	349836996.184000	349837674.79293	On-chip summing requested	N	N
Observation end date	2009-02-01T00:55:30	2009-02-01T01:07:54	Subarray requested	NONE	NONE
Read mode	TIMED	TIMED	Alternating exposures requested	N	N
			[s] Primary exposure time	0.000000	3.2

2.3 Aspect



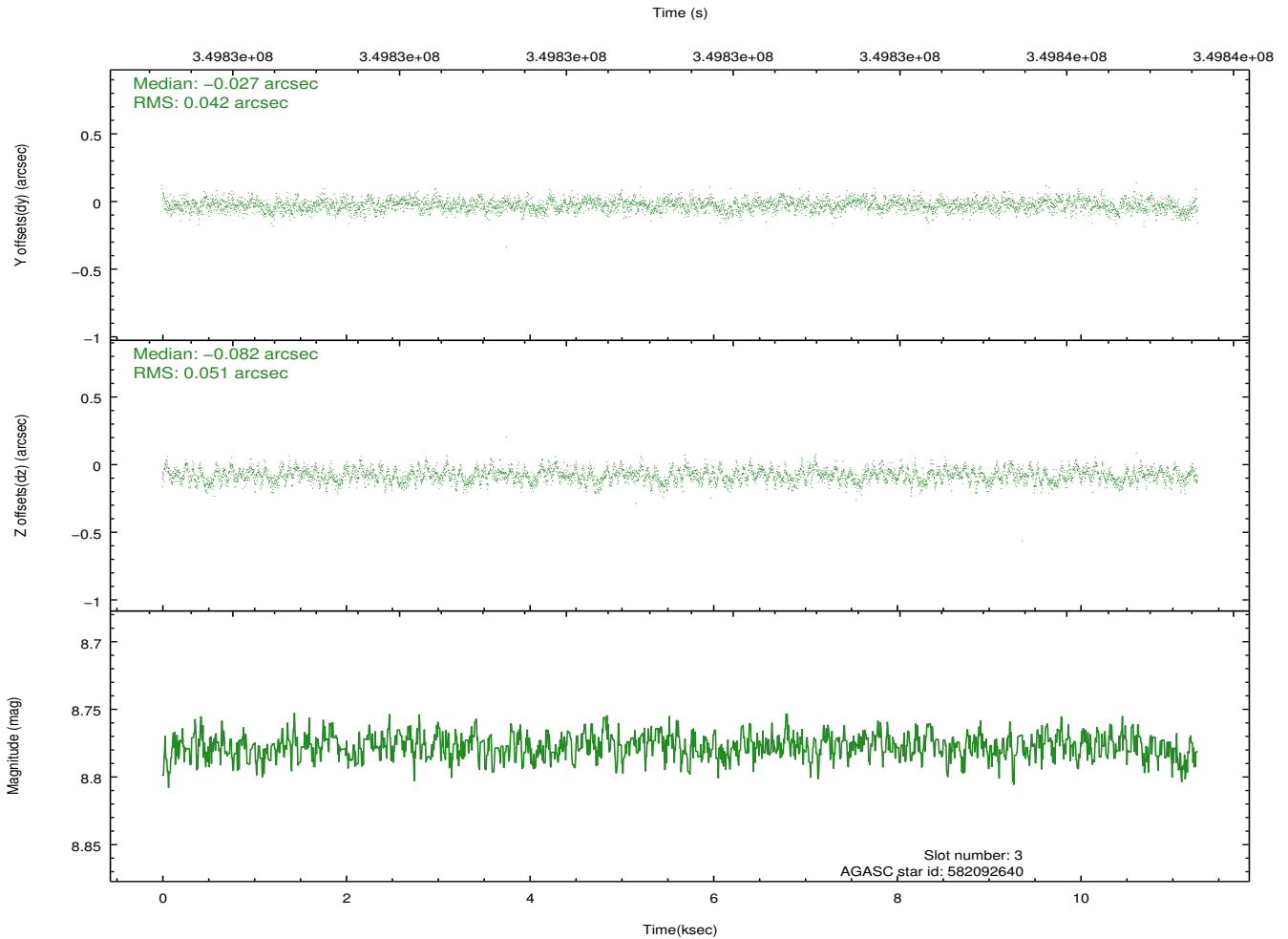
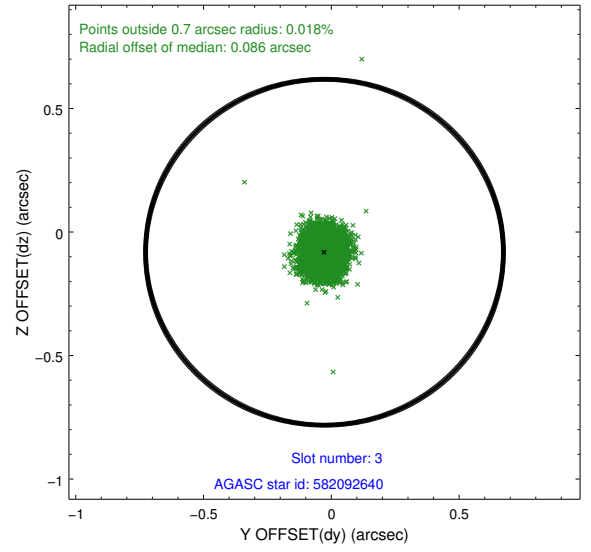
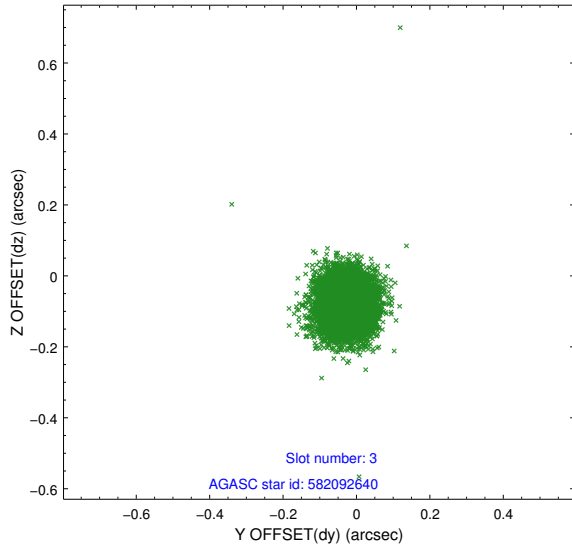


Slot Statistics

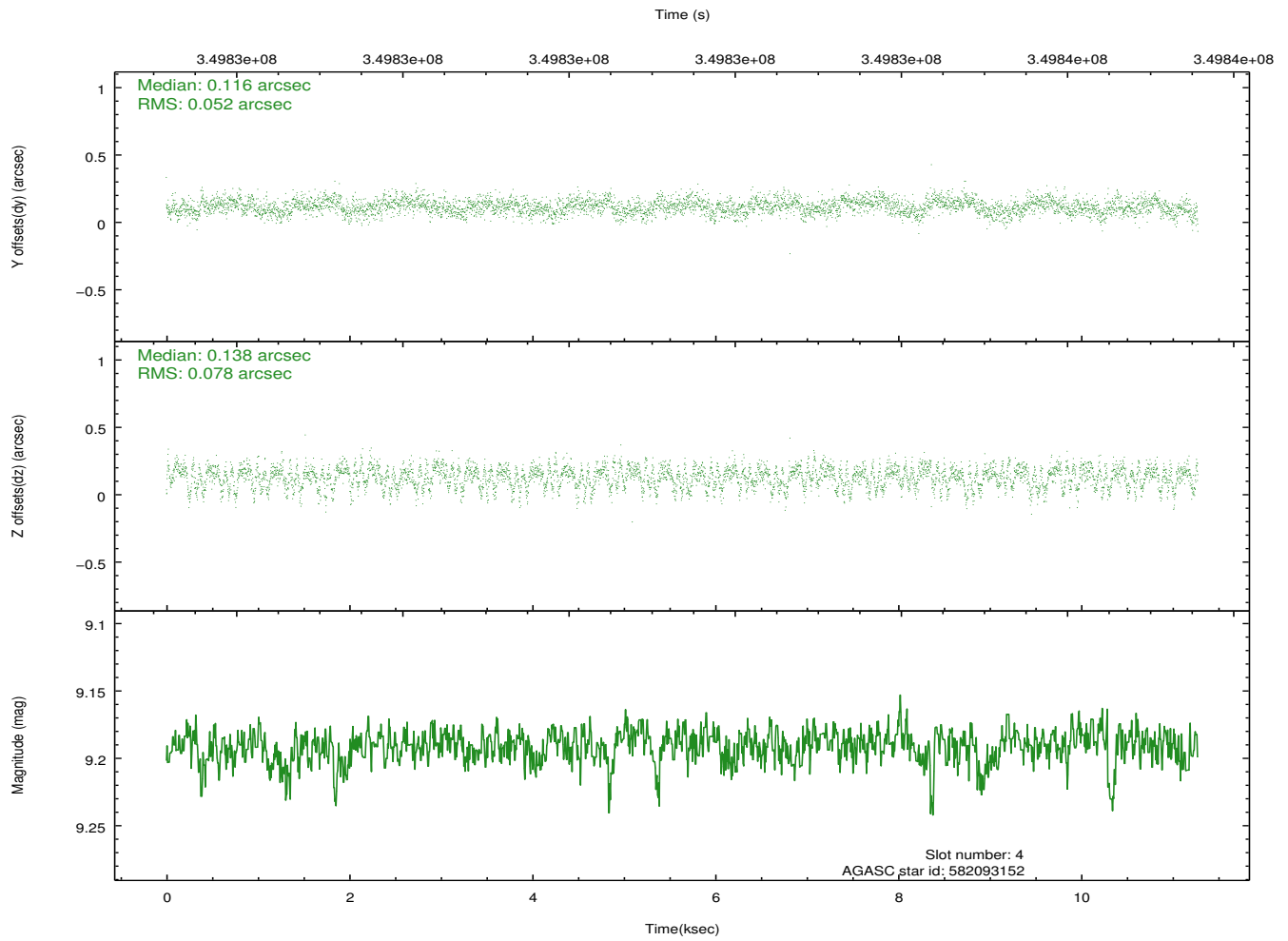
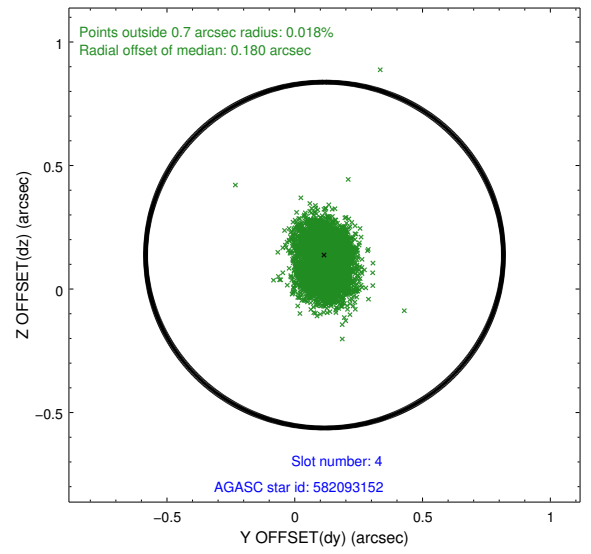
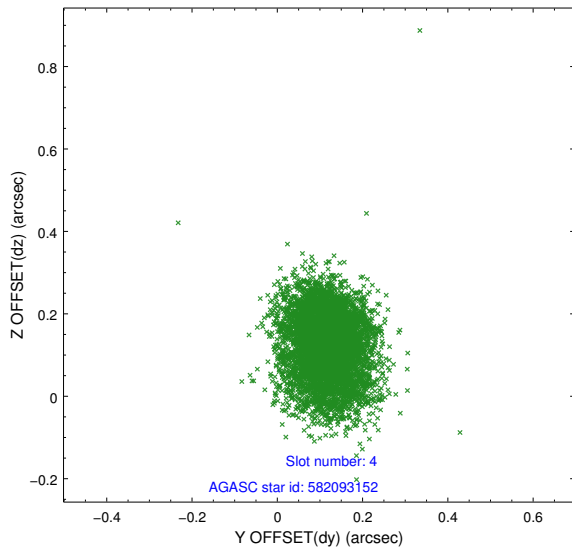
slot	status	id	mag	n_pts	med_dy	med_dz	dr1	dr2	ra	dec	mean_y	mean_z
0	FID	ACIS-S-2	6.90	2751	-0.091	-0.054	0.007	0.013	0.000000	0.000000	-766.40	-1736.36
1	FID	ACIS-S-4	6.99	2751	0.111	0.044	0.007	0.012	0.000000	0.000000	2146.88	171.75
2	FID	ACIS-S-6	7.12	2751	-0.047	0.016	0.007	0.011	0.000000	0.000000	396.21	809.64
3	GUIDE	582092640	8.78	5498	-0.027	-0.082	0.069	0.111	273.409601	74.270968	-1767.50	144.67
4	GUIDE	582093152	9.19	5491	0.116	0.138	0.098	0.166	275.879645	74.167964	-87.73	-1633.40
5	GUIDE	582096192	7.61	5502	-0.068	0.016	0.067	0.109	273.025493	74.334045	-1913.34	557.14
6	GUIDE	582098136	8.26	5502	0.001	0.039	0.063	0.098	272.884914	74.391481	-1887.08	803.87
7	GUIDE	582224240	8.71	5494	-0.026	-0.099	0.096	0.161	277.682033	74.602036	2242.52	-1390.20

2.4 Star Slots

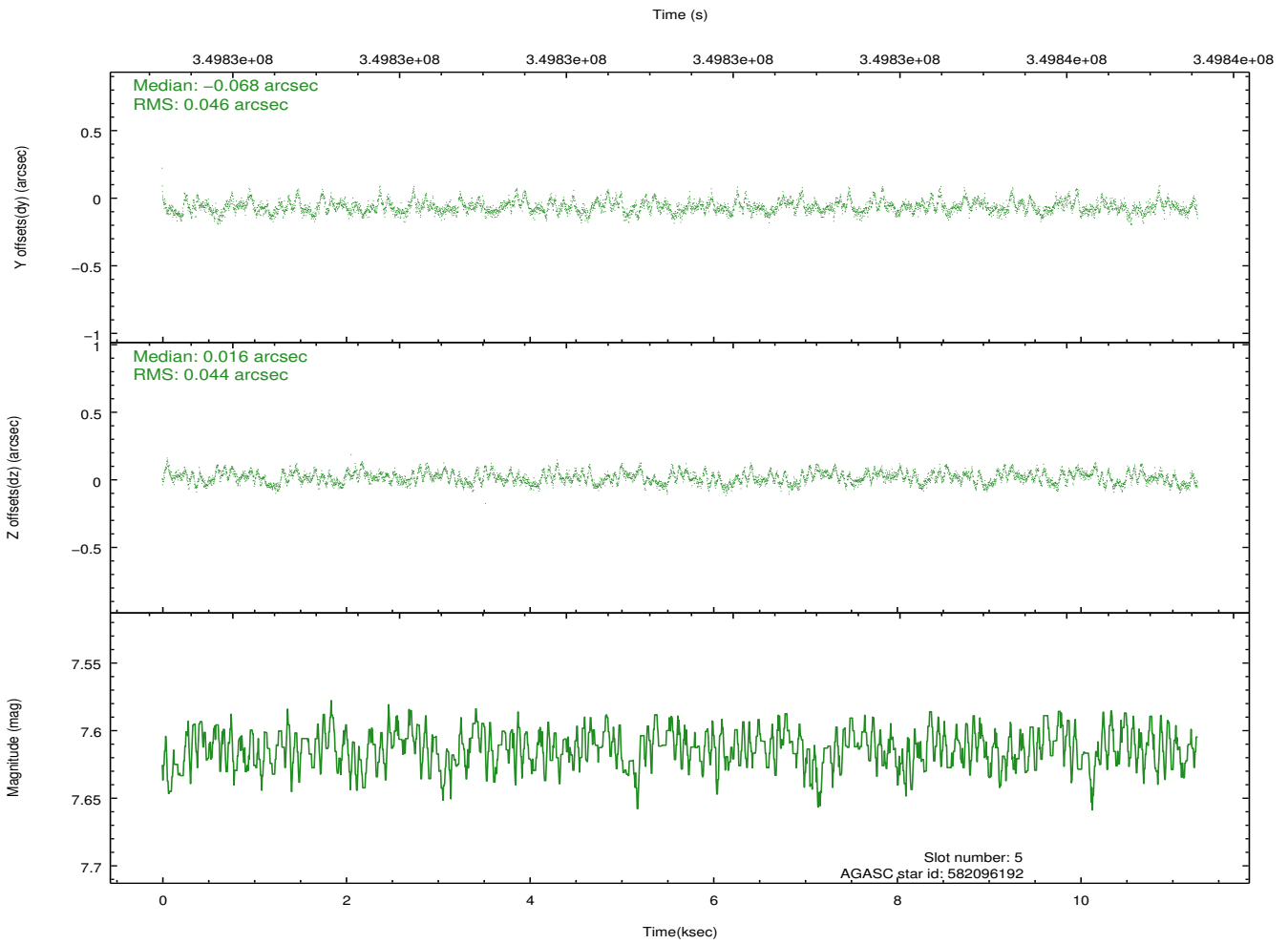
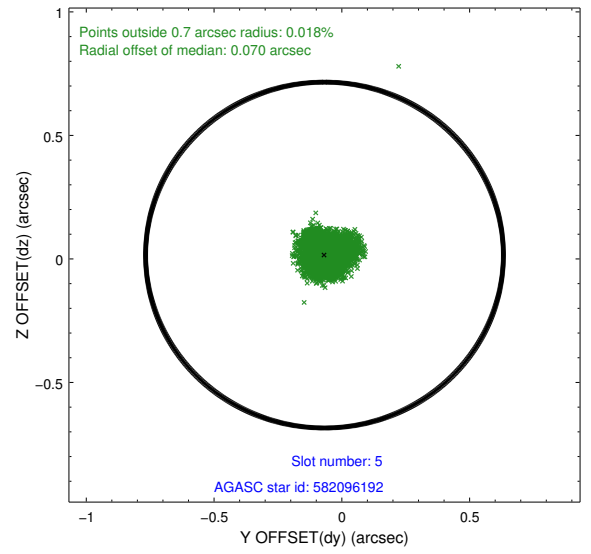
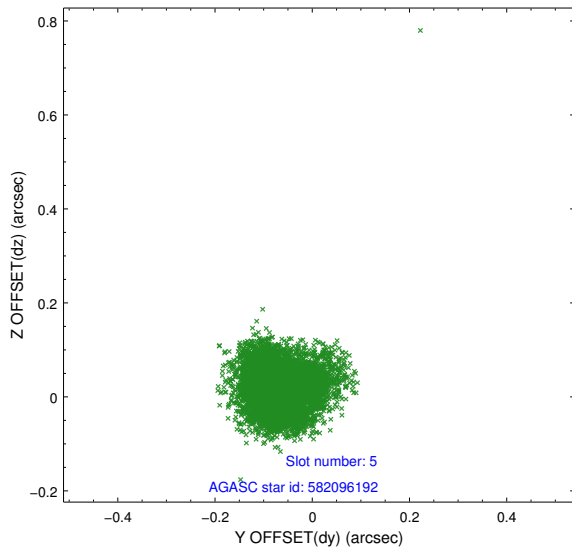
2.4.1 Slot 3



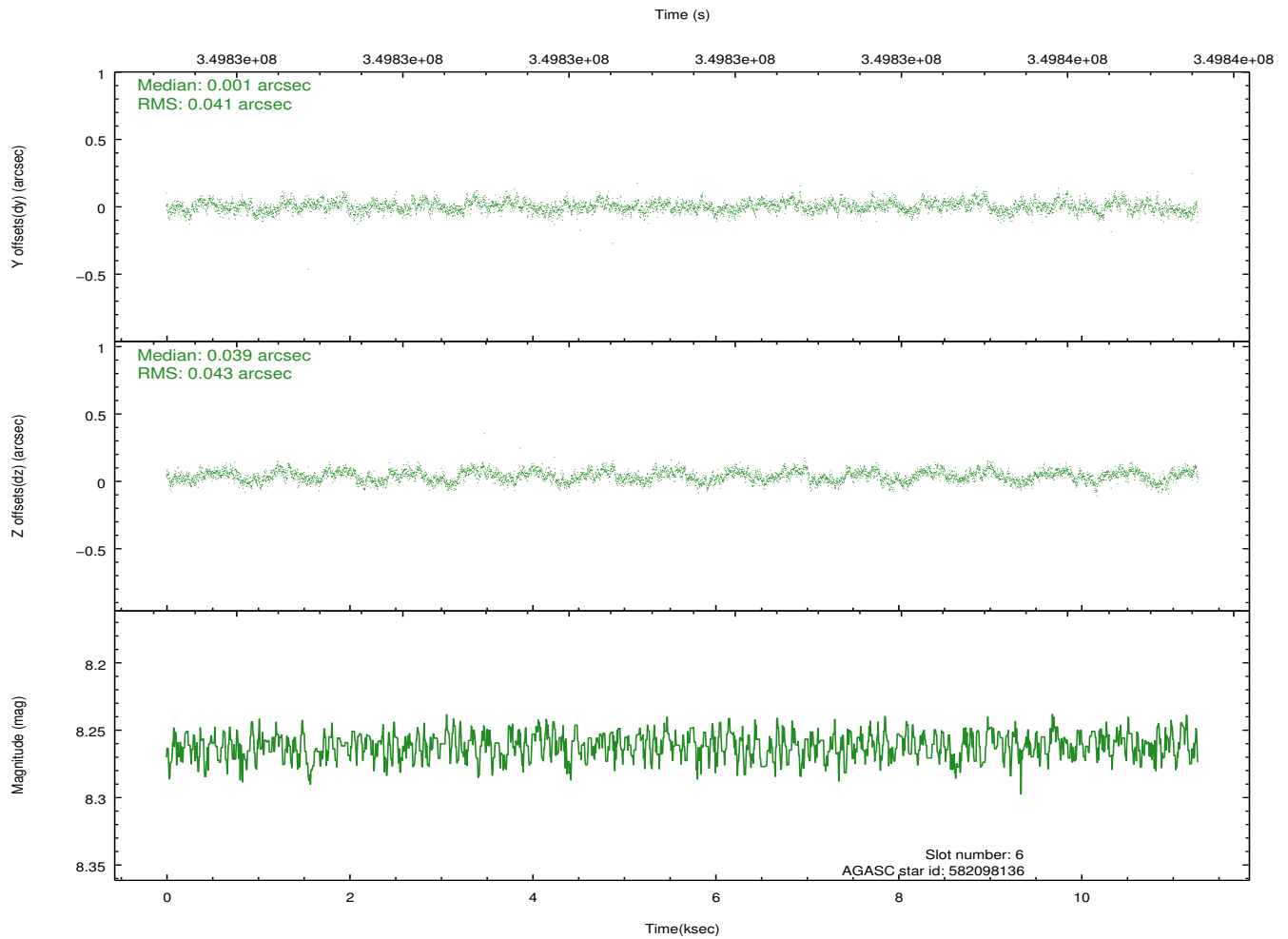
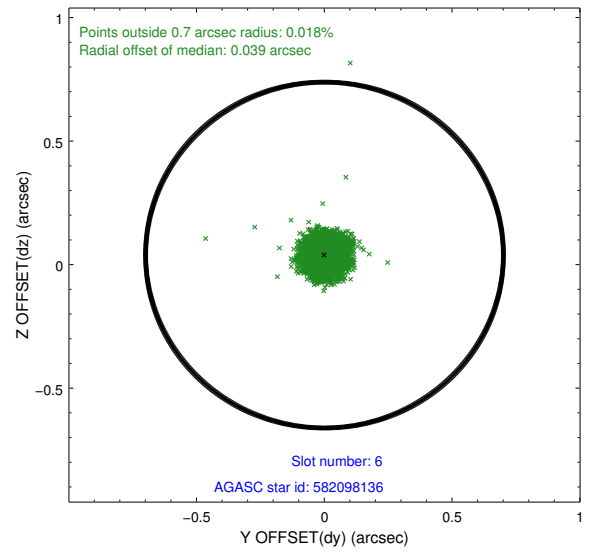
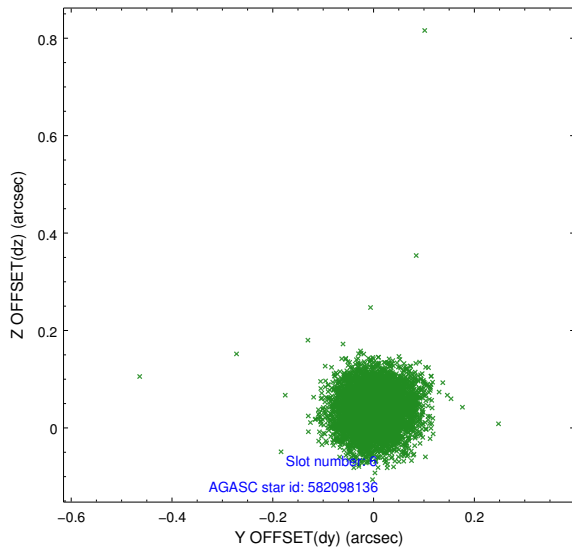
2.4.2 Slot 4



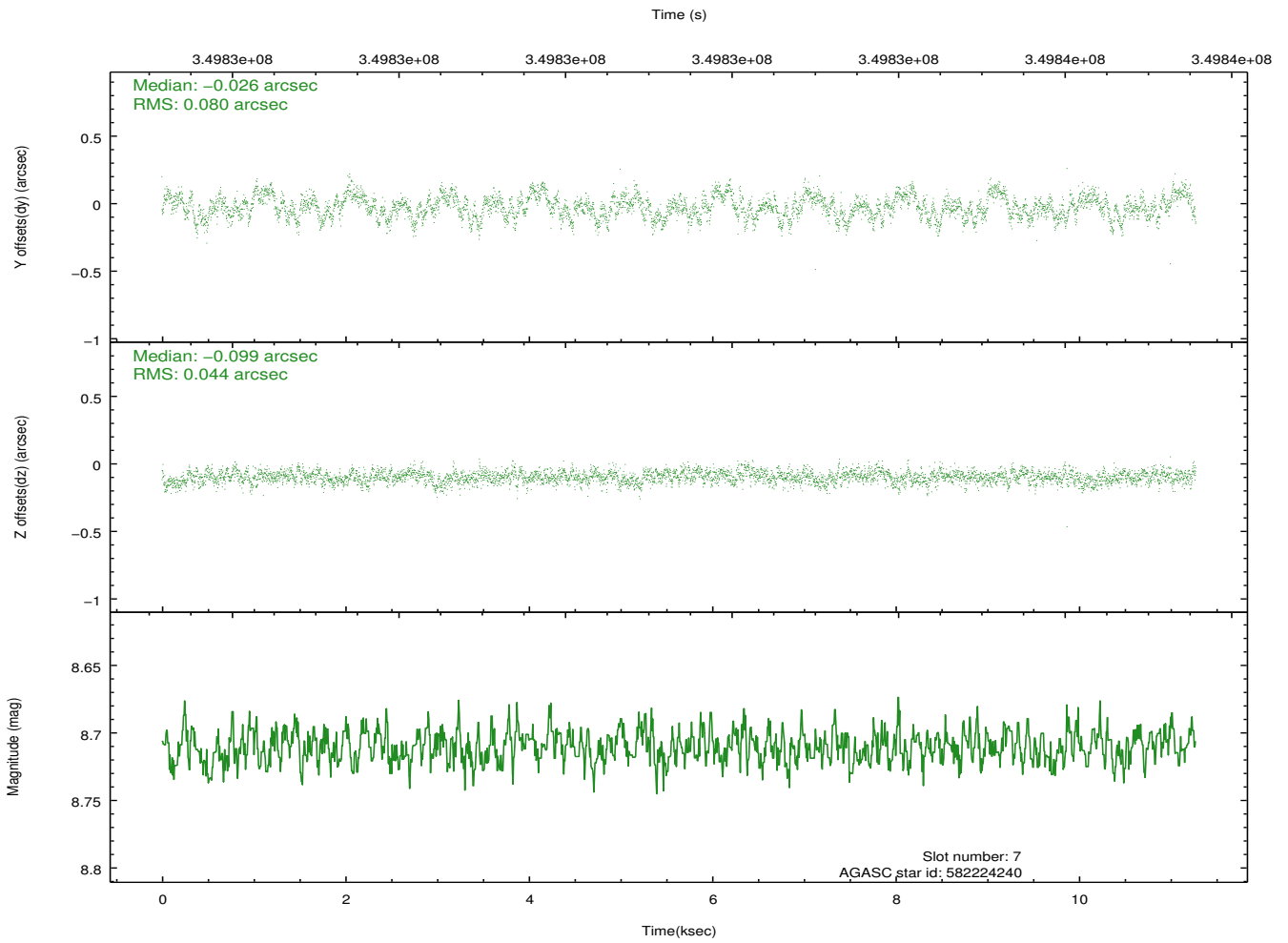
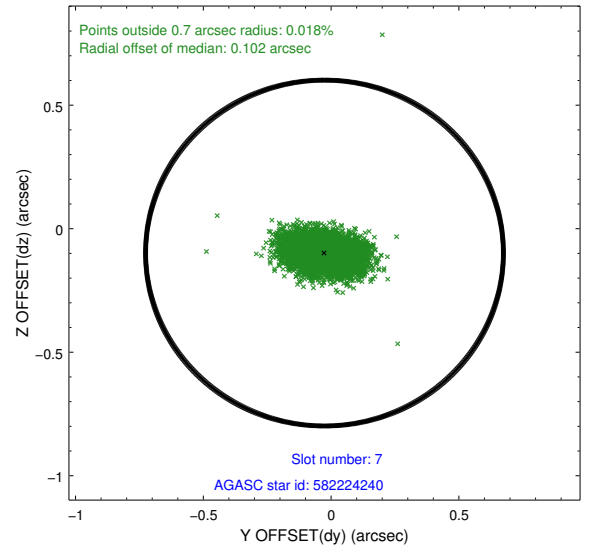
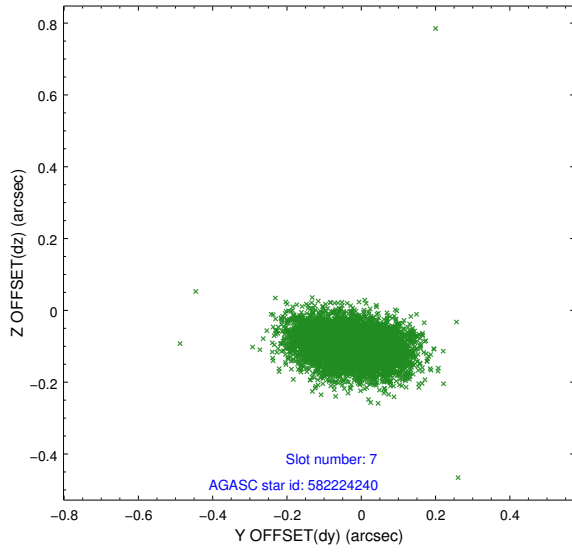
2.4.3 Slot 5



2.4.4 Slot 6

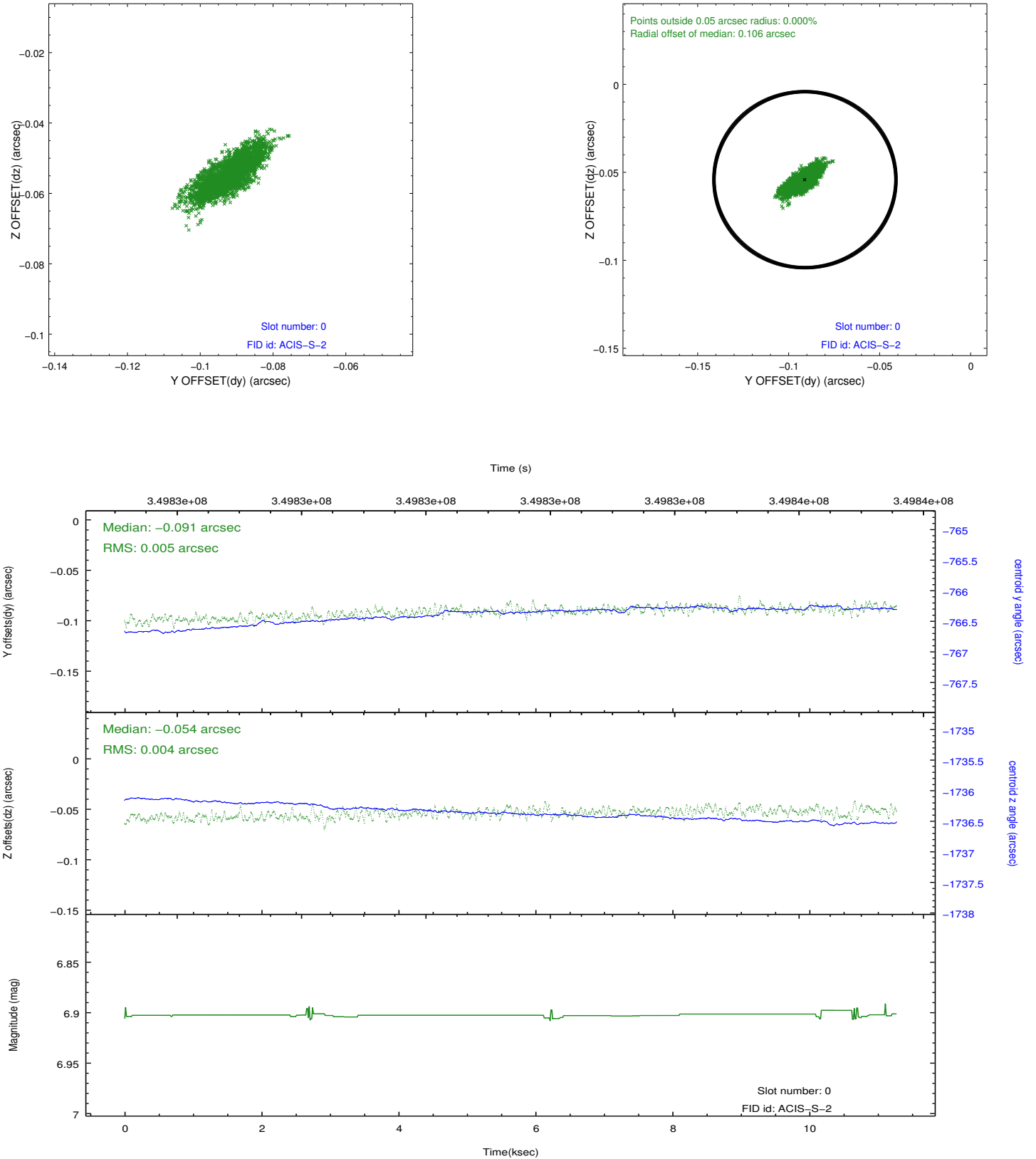


2.4.5 Slot 7

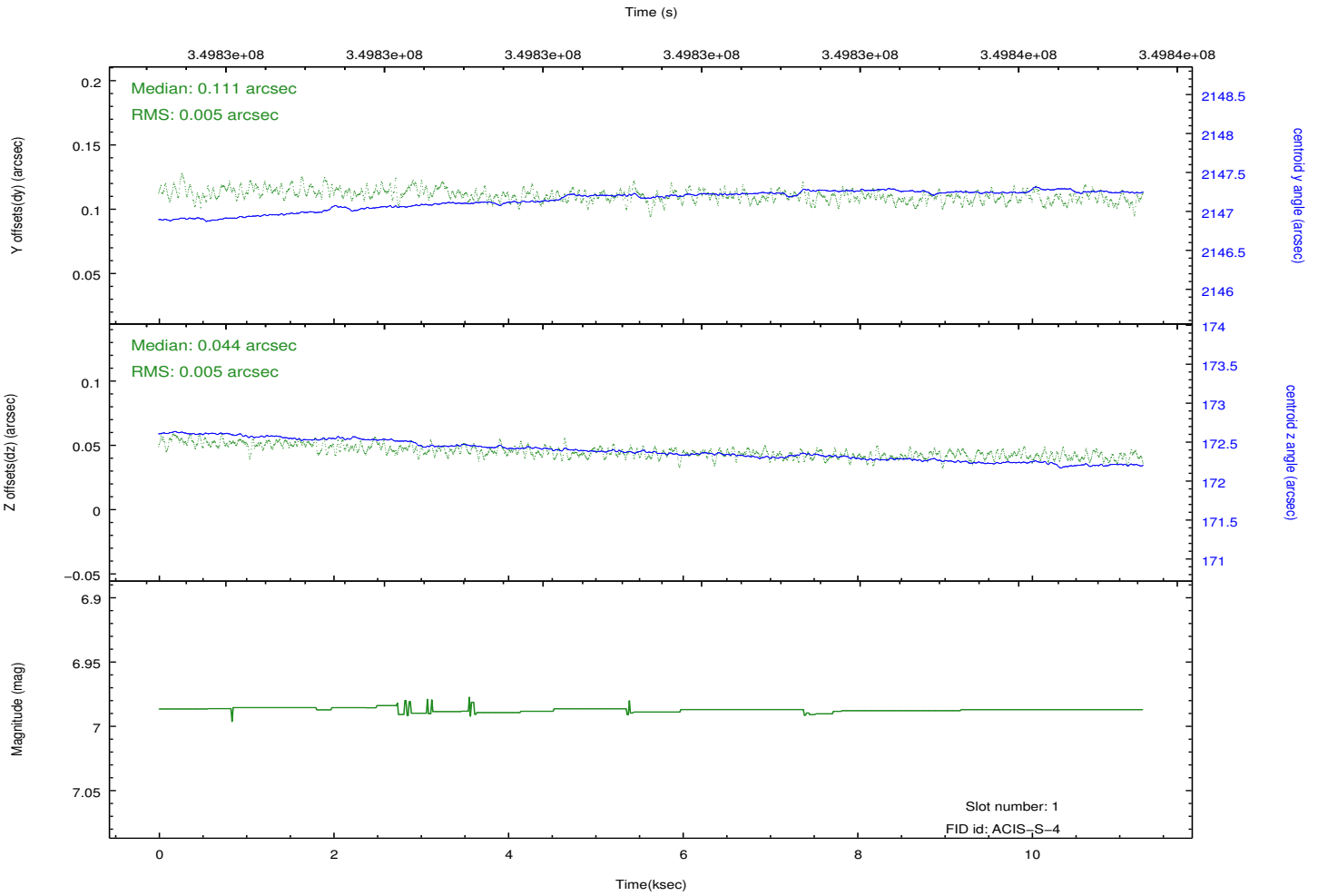
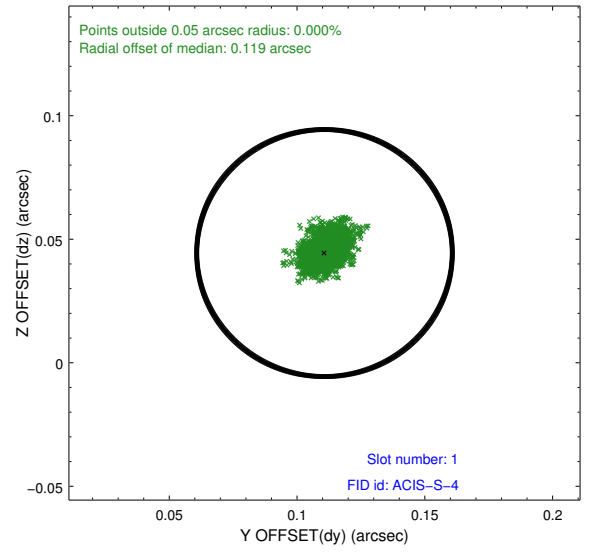
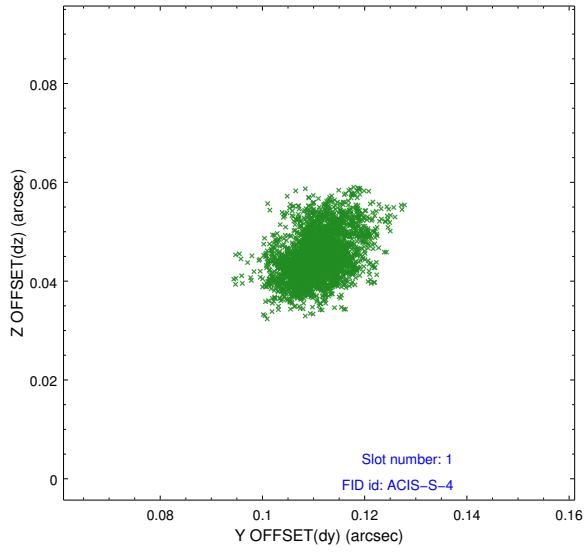


2.5 FID Slots

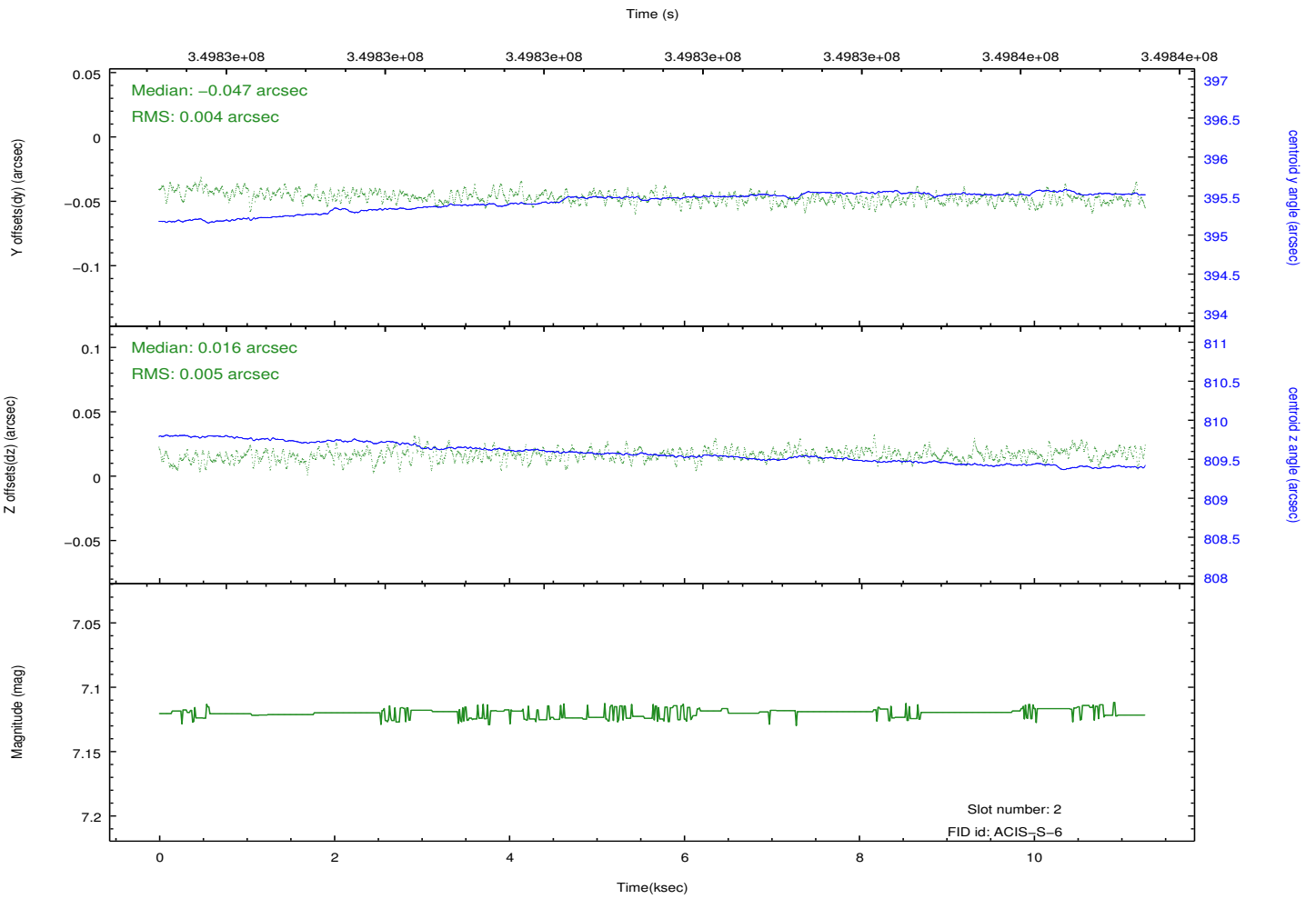
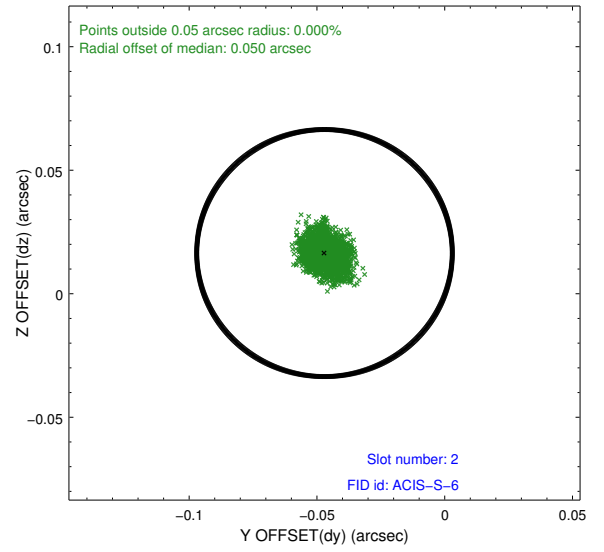
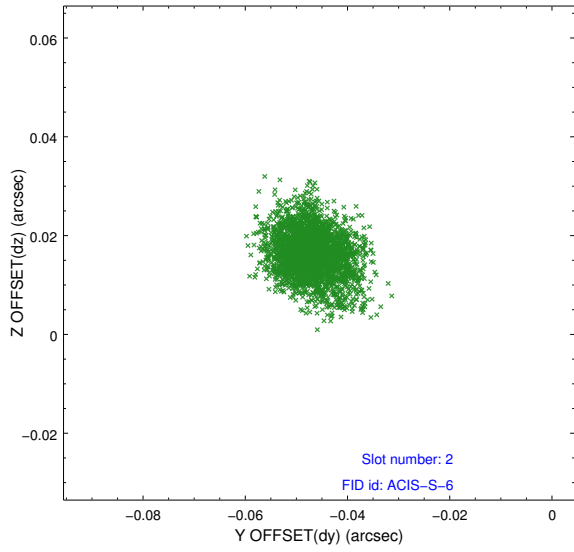
2.5.1 Slot 0



2.5.2 Slot 1



2.5.3 Slot 2



A Summary

A.1 Status

V&V Scientist	Jen Lauer
V&V Date (YYYY-MM-DD)	2012.07.05
V&V Edition	1
V&V Disposition and Status	OK
V&V Charge Time	9.98399996

A.2 Comments