

V&V Reference Report

L2 ASCDS Version : 8.4.5

Observation 10458 - L2 Version 2
Chandra X-Ray Center

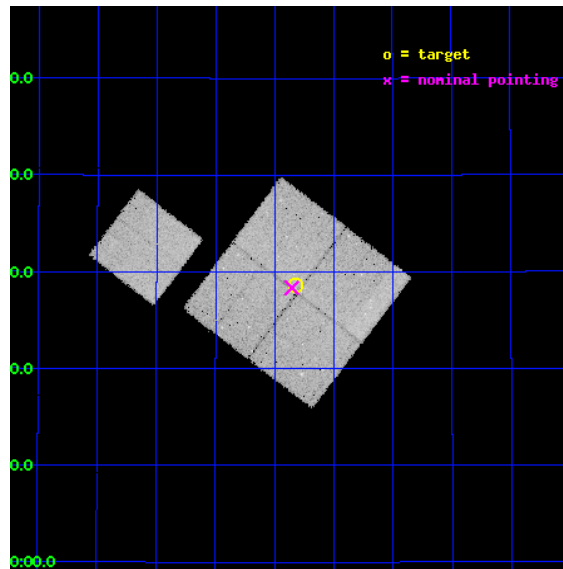
L2 Processing Date : Jun 13 2012

Contents

1	Front	2
2	OBI	3
2.1	OBI	3
2.1.1	Images	3
2.1.2	Bias	3
2.1.3	Parameters	4
2.1.4	Events	4
2.2	Compared Parameters	5
2.3	Aspect	6
2.4	Star Slots	9
2.4.1	Slot 3	9
2.4.2	Slot 4	10
2.4.3	Slot 5	11
2.4.4	Slot 6	12
2.4.5	Slot 7	13
2.5	FID Slots	14
2.5.1	Slot 0	14
2.5.2	Slot 1	15
2.5.3	Slot 2	16
A	Summary	17
A.1	Status	17
A.2	Comments	17

1 Front

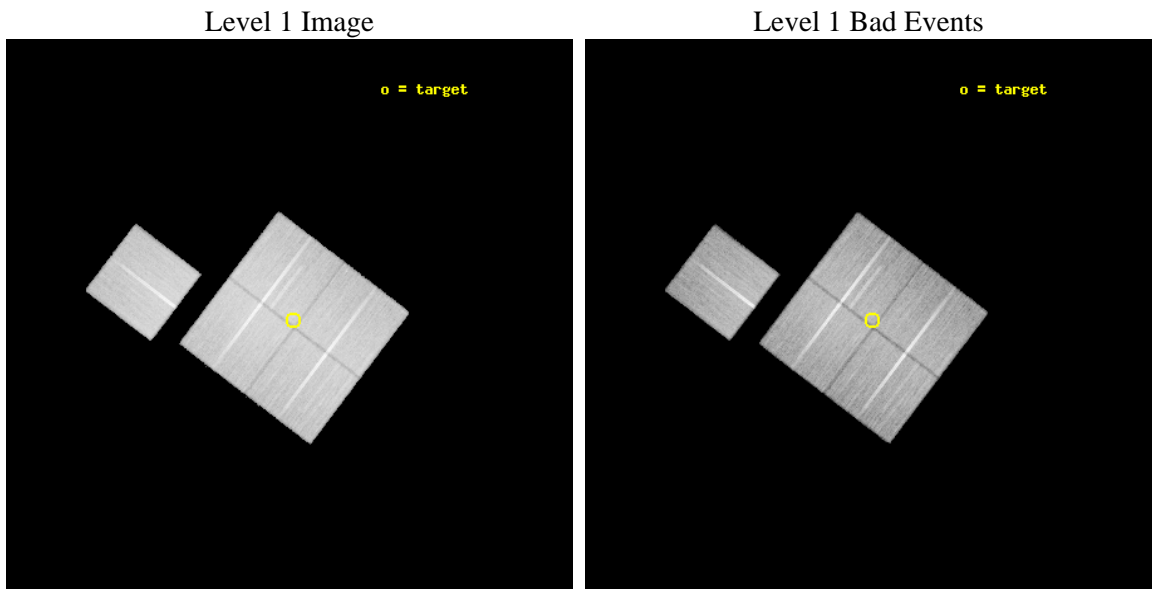
seq_num	800819	Sequence number
obs_id	10458	Observation id
title	The Role of AGN in Massive Galaxy Formation	Proposal title
observer	Dr. Spencer Stanford	Principal investigator
object	ISCS0890	Source name
dtcycle	0	
cycle	P	events from which exps? Prim/Second/Both
ra_targ	216.330417	Observer's specified target RA [deg]
dec_targ	34.477278	Observer's specified target Dec [deg]
ra_nom	216.33839793268	Nominal RA [deg]
dec_nom	34.472576233313	Nominal Dec [deg]
roll_nom	307.26707005967	Nominal Roll [deg]
revision	2	Processing version of data
ontime	37178.136454523	Sum of GTIs [s]
livetime	36692.376731598	Livetime [s]
ontime0	37190.700286031	Sum of GTIs [s]
ontime1	37181.277375042	Sum of GTIs [s]
ontime2	37187.559325695	Sum of GTIs [s]
ontime3	37178.136454523	Sum of GTIs [s]
ontime6	37187.559325695	Sum of GTIs [s]
l2events	138453	Number of level 2 events



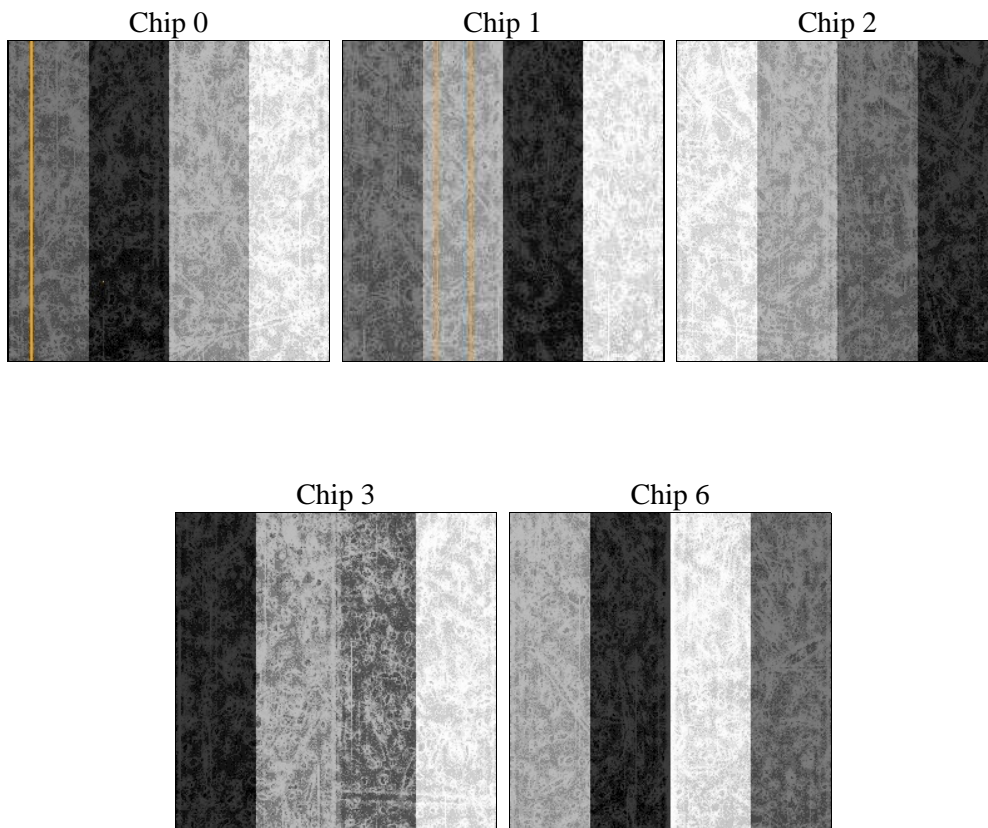
2 OBI

2.1 OBI

2.1.1 Images



2.1.2 Bias



2.1.3 Parameters

obi_num	0	Obi number	sched_exp_time	37000.000000	[s] Scheduled observation exposure time
ascdsver	8.4.5	Processing system revision	ontime	37178.136454523	Sum of GTIs [s]
caldbver	4.4.10	 	ontime0	37190.700286031	Sum of GTIs [s]
date	2012-06-13T21:49:17	Date and time of file creation	ontime1	37181.277375042	Sum of GTIs [s]
revision	2	Processing version of data	ontime2	37187.559325695	Sum of GTIs [s]
			ontime3	37178.136454523	Sum of GTIs [s]
			ontime6	37187.559325695	Sum of GTIs [s]
			l1events	1591080	Number of level 1 events

2.1.4 Events

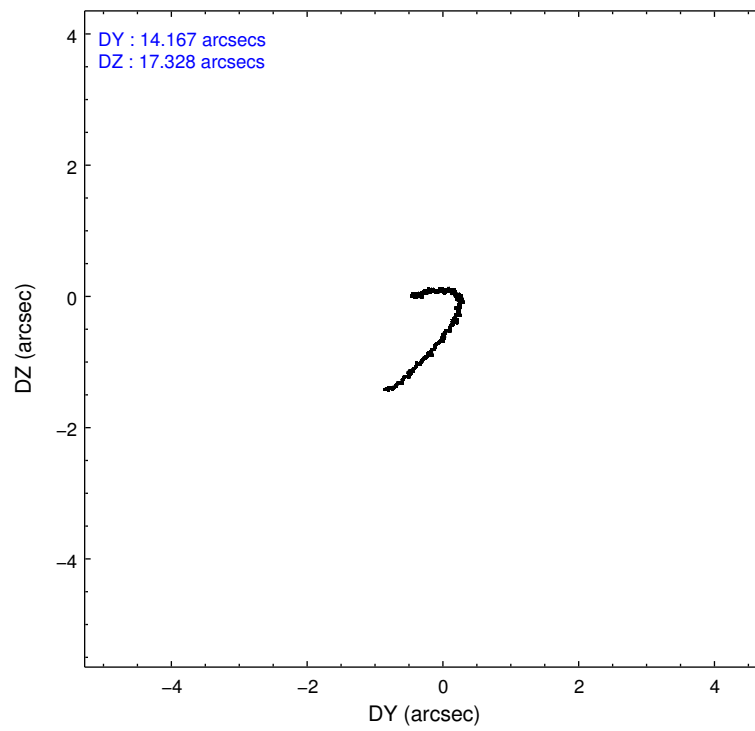
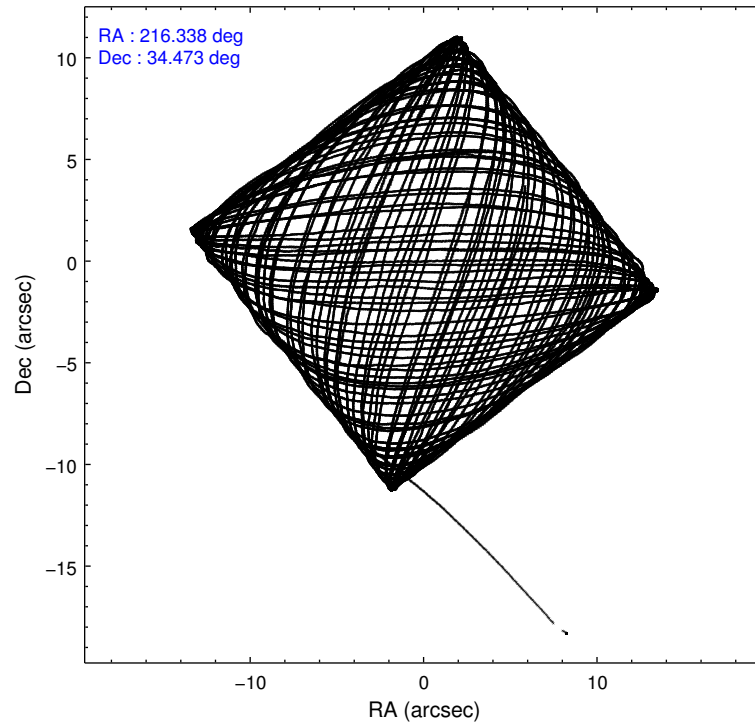
	ccd 0	ccd 1	ccd 2	ccd 3	ccd 6
level 1 events	304605	303675	337945	321988	322867
rejected events	271825	266663	305258	291008	289262
rejected %	89%	87%	90%	90%	89%

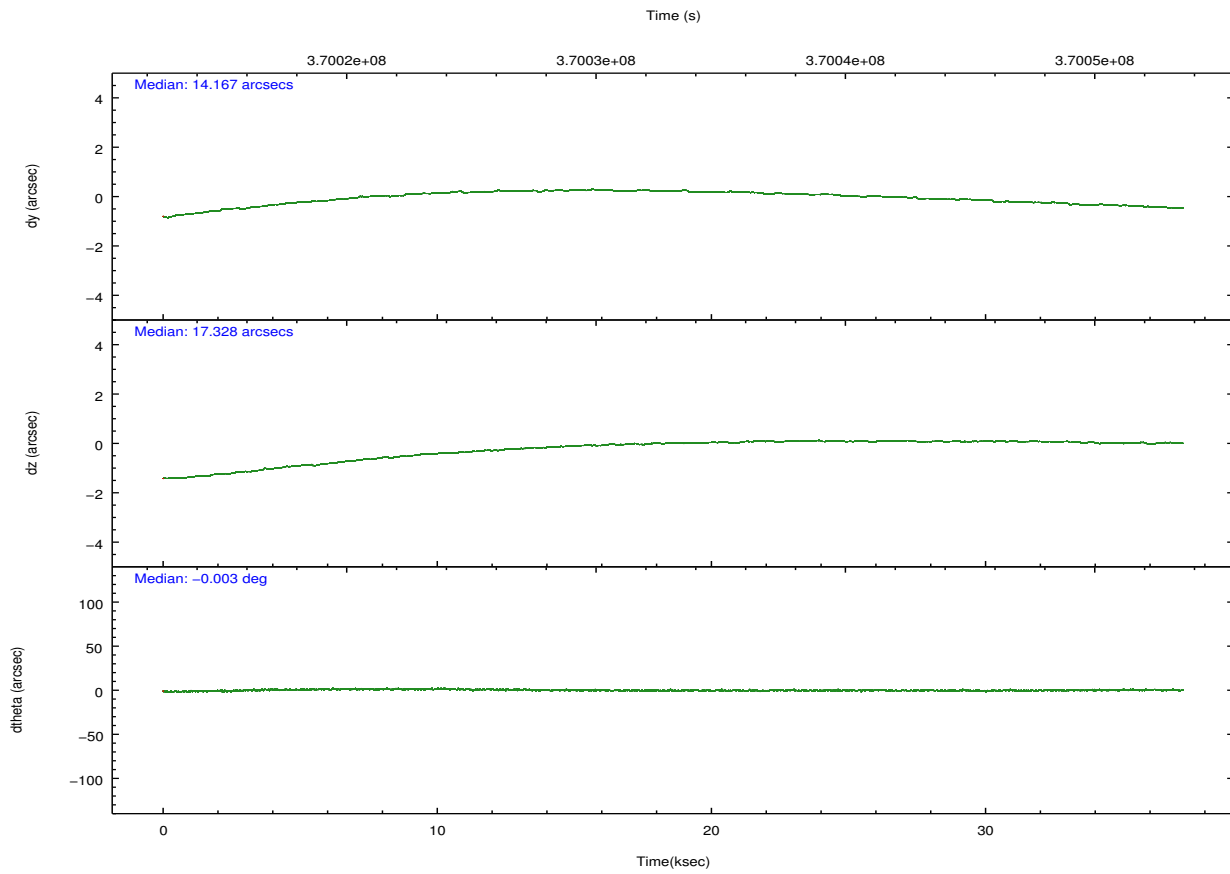
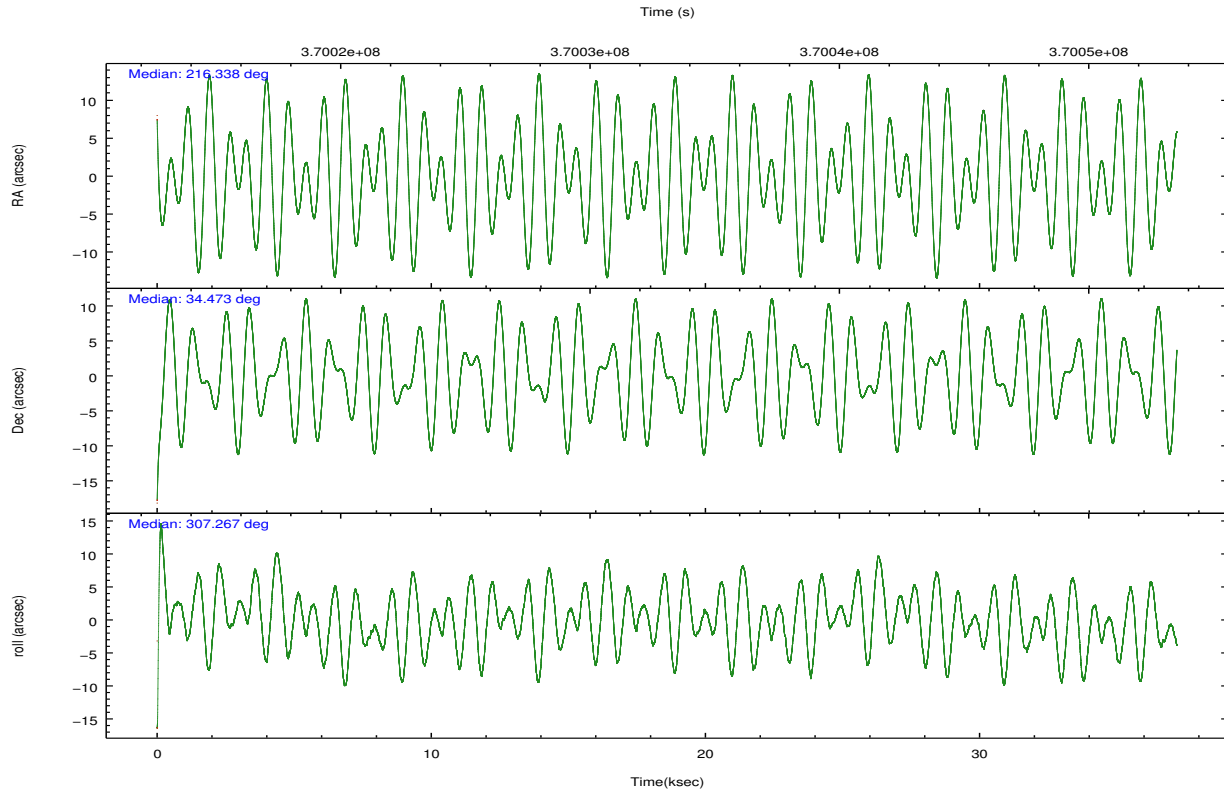
	ccd 0	ccd 1	ccd 2	ccd 3	ccd 6
grade 0 events	11253	13106	11707	10954	11472
	3%	4%	3%	3%	3%
grade 1 events	193	176	183	192	165
	0%	0%	0%	0%	0%
grade 2 events	7992	8605	8026	7083	7602
	2%	2%	2%	2%	2%
grade 3 events	3695	3996	3368	3489	3680
	1%	1%	0%	1%	1%
grade 4 events	3377	3800	3438	3368	3535
	1%	1%	1%	1%	1%
grade 5 events	11715	13038	10908	13590	13369
	3%	4%	3%	4%	4%
grade 6 events	6508	7538	6197	6129	7360
	2%	2%	1%	1%	2%
grade 7 events	259872	253416	294118	277183	275684
	85%	83%	87%	86%	85%

2.2 Compared Parameters

Parameter	Planned	Actual	Parameter	Planned	Actual
Instrument	ACIS	ACIS	Obspar format version number	7	7
Detector	ACIS-01236	ACIS-01236	Obspar file type	PREDICTED	ACTUAL
Grating	NONE	NONE	Obspar update status	NONE	UPDATED
Data mode	VFAINT	VFAINT	CCD I0 on	Y	Y
Observation mode	POINTING	POINTING	CCD I1 on	Y	Y
[deg] Pointing RA	216.307580	216.3383979326824	CCD I2 on	Y	Y
[deg] Pointing Dec	34.483109	34.47257623331321	CCD I3 on	Y	Y
[deg] Pointing Roll	307.075843	307.2670700596675	CCD S0 on	N	N
[mm] SIM focus pos	-0.782348	-0.7809083437167272	CCD S1 on	N	N
[mm] SIM defocus	0	0.001439871863259334	CCD S2 on	O1	Y
[mm] SIM translation stage pos	-233.592463	-233.5874344608287	CCD S3 on	N	N
[mm] SIM translation stage offset	0	-0.005018542100998502	CCD S4 on	N	N
[s] Observation start time (MET)	370014694.184000	370013523.64932	CCD S5 on	N	N
Observation start date	2009-09-22T13:50:28	2009-09-22T13:32:03	Number of optional ACIS chips dropped	0	0
[s] Observation end time (MET)	370051694.184000	370052679.16379	On-chip summing requested	N	N
Observation end date	2009-09-23T00:07:08	2009-09-23T00:24:39	Subarray requested	NONE	NONE
Read mode	TIMED	TIMED	Alternating exposures requested	N	N
			[s] Primary exposure time	0.000000	3.1

2.3 Aspect



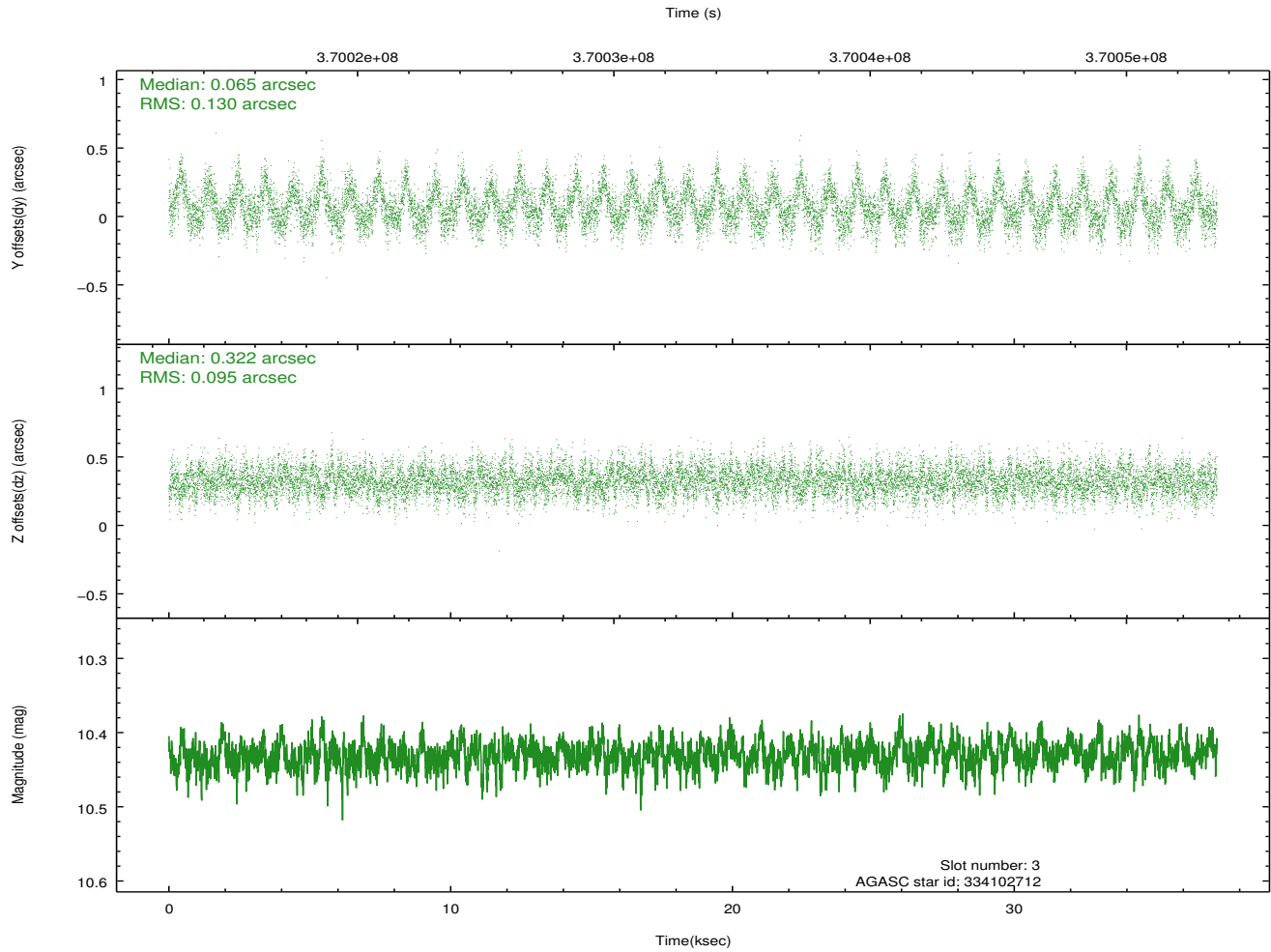
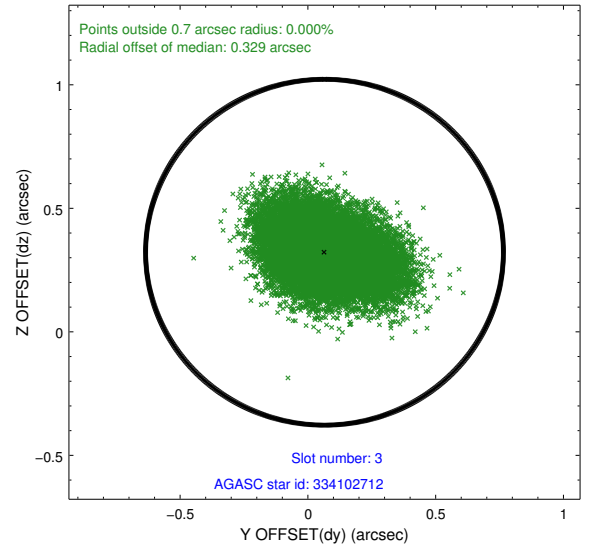
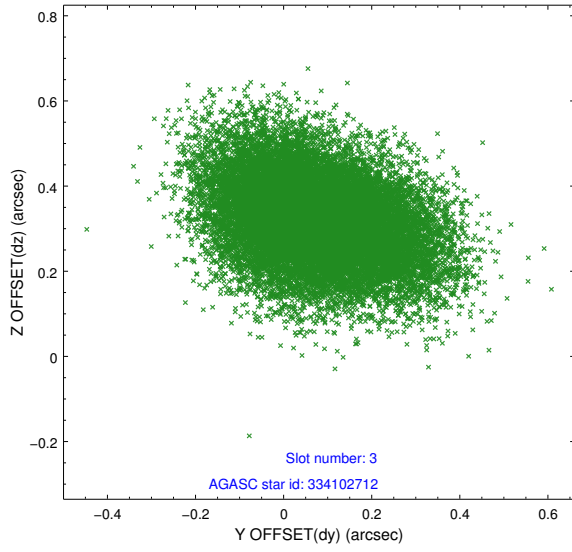


Slot Statistics

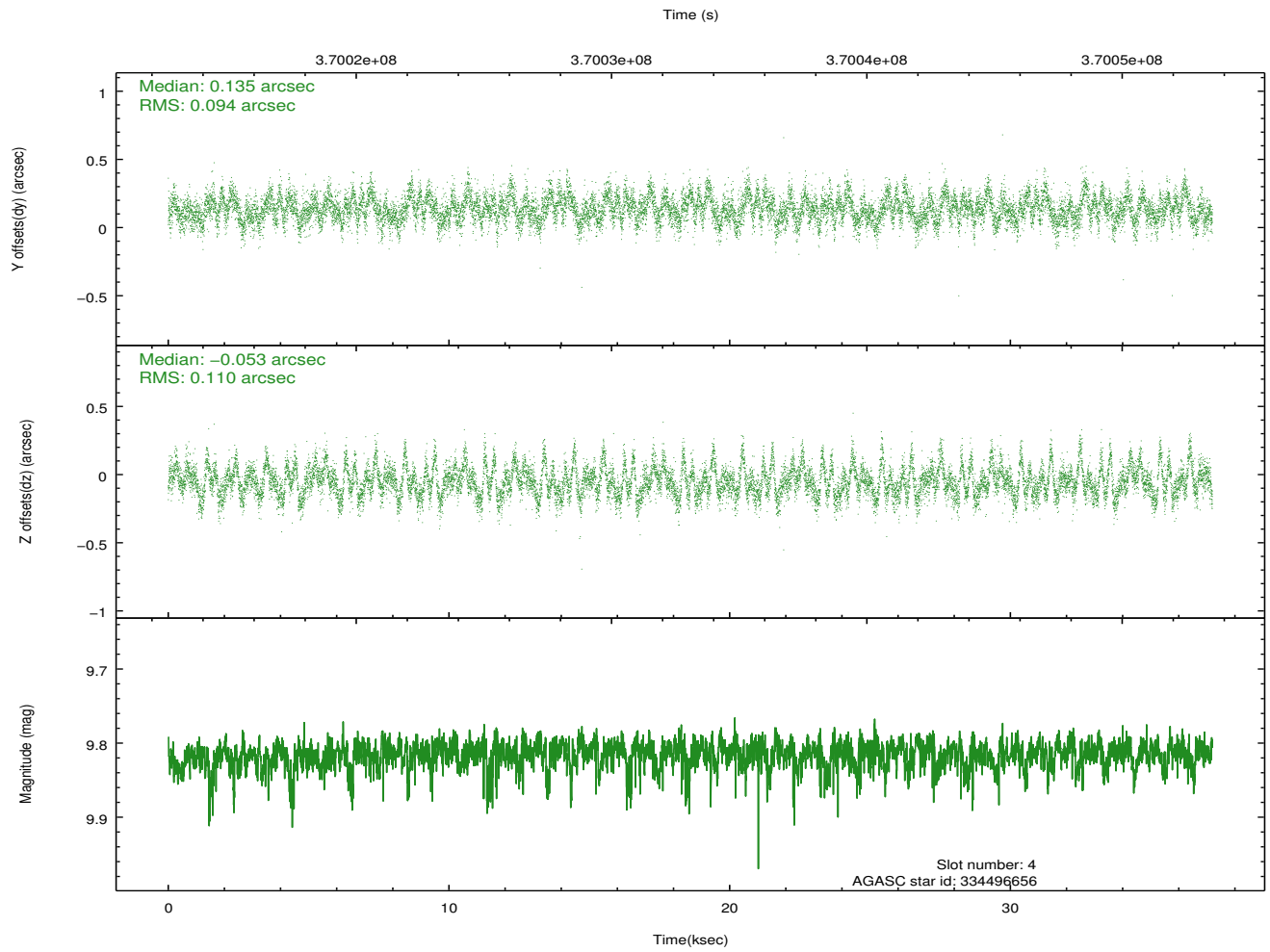
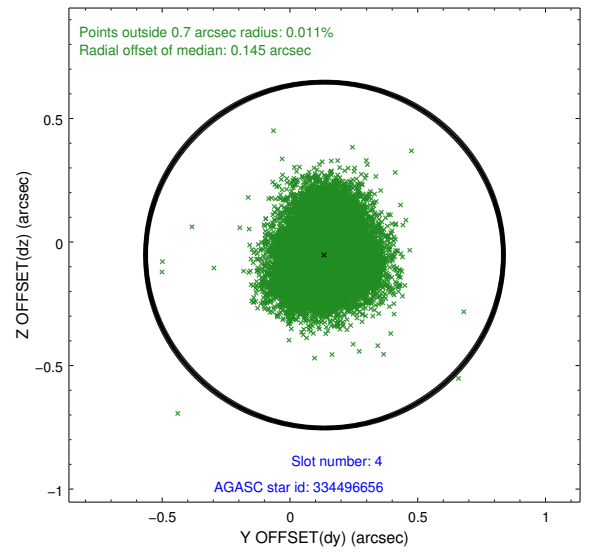
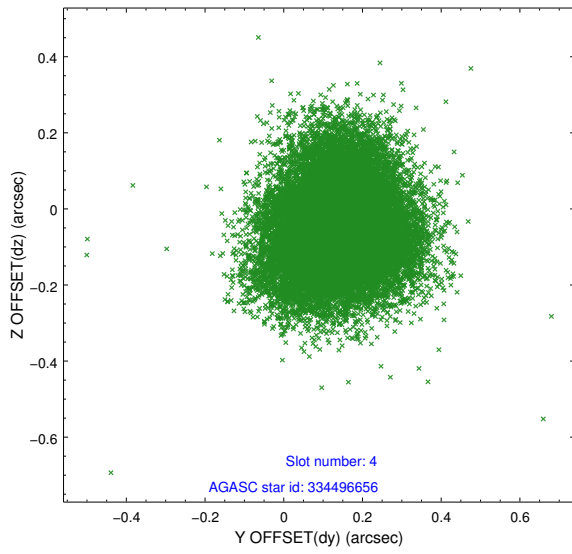
slot	status	id	mag	n_pts	med_dy	med_dz	dr1	dr2	ra	dec	mean_y	mean_z
0	FID	ACIS-I-1	6.98	9072	0.070	-0.020	0.012	0.021	0.000000	0.000000	925.46	-840.74
1	FID	ACIS-I-2	6.90	9073	-0.037	-0.031	0.015	0.033	0.000000	0.000000	-768.72	-847.22
2	FID	ACIS-I-5	6.97	9073	-0.127	0.123	0.013	0.022	0.000000	0.000000	-1823.04	1056.84
3	GUIDE	334102712	10.43	18109	0.065	0.322	0.171	0.282	215.839894	34.864973	-1931.49	-270.87
4	GUIDE	334496656	9.82	18113	0.135	-0.053	0.155	0.247	215.929218	35.031287	-2248.33	301.20
5	GUIDE	335021128	9.37	18132	-0.095	-0.429	0.118	0.194	216.159551	34.422539	-91.31	-482.27
6	GUIDE	335030384	8.83	18131	-0.278	0.073	0.154	0.237	216.806407	34.722197	200.16	1698.87
7	GUIDE	334105832	10.19	18029	0.166	0.058	0.240	0.362	215.847735	34.556918	-1036.00	-925.41

2.4 Star Slots

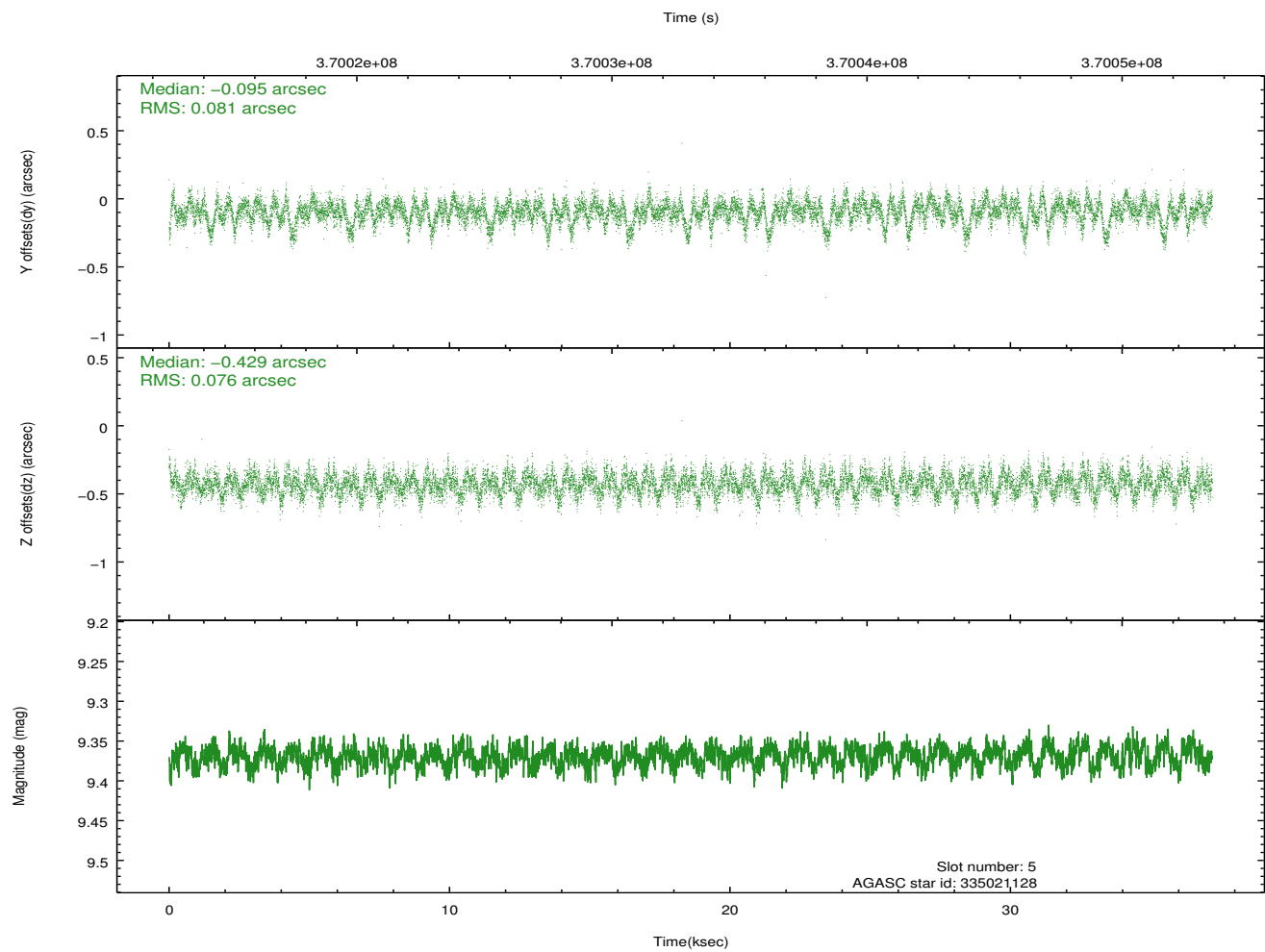
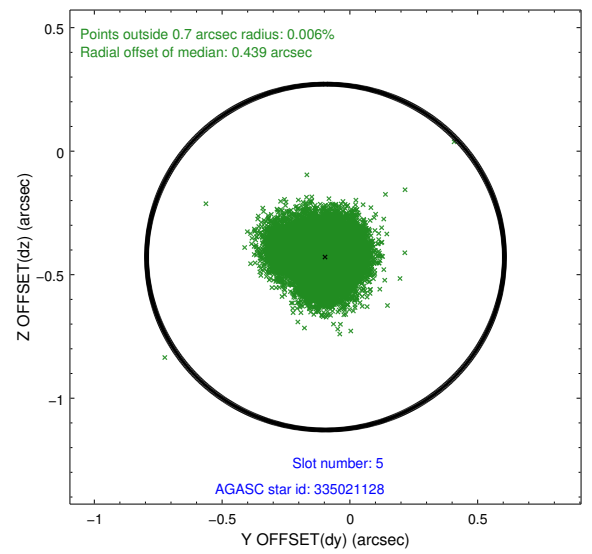
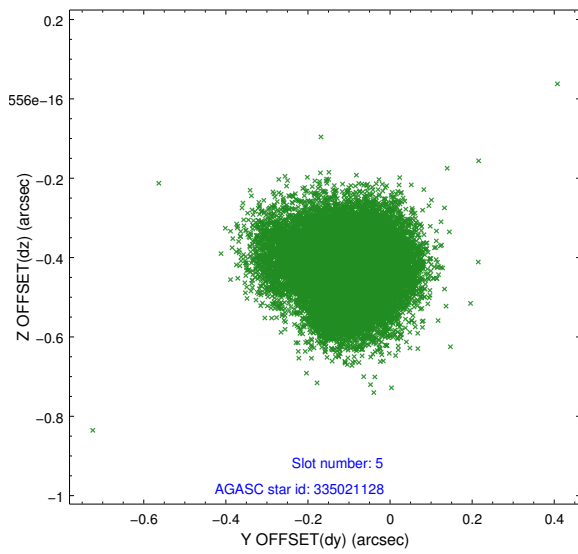
2.4.1 Slot 3



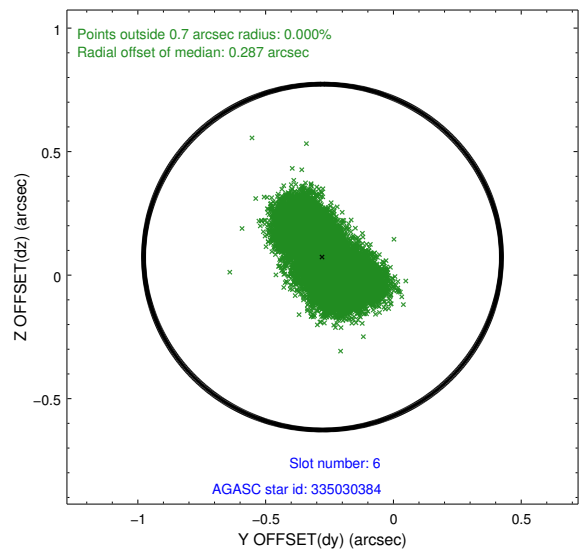
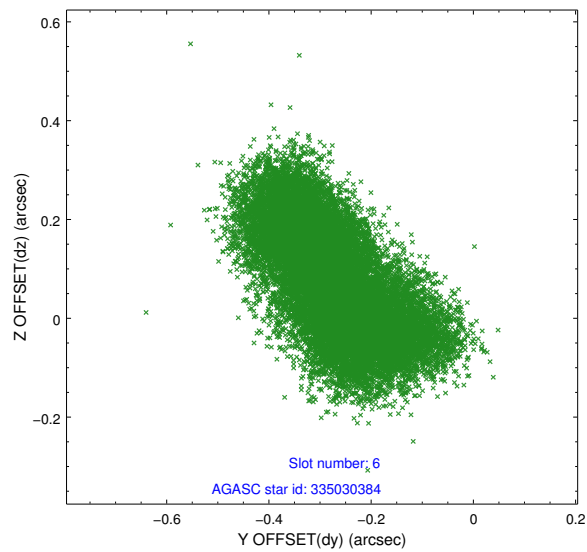
2.4.2 Slot 4



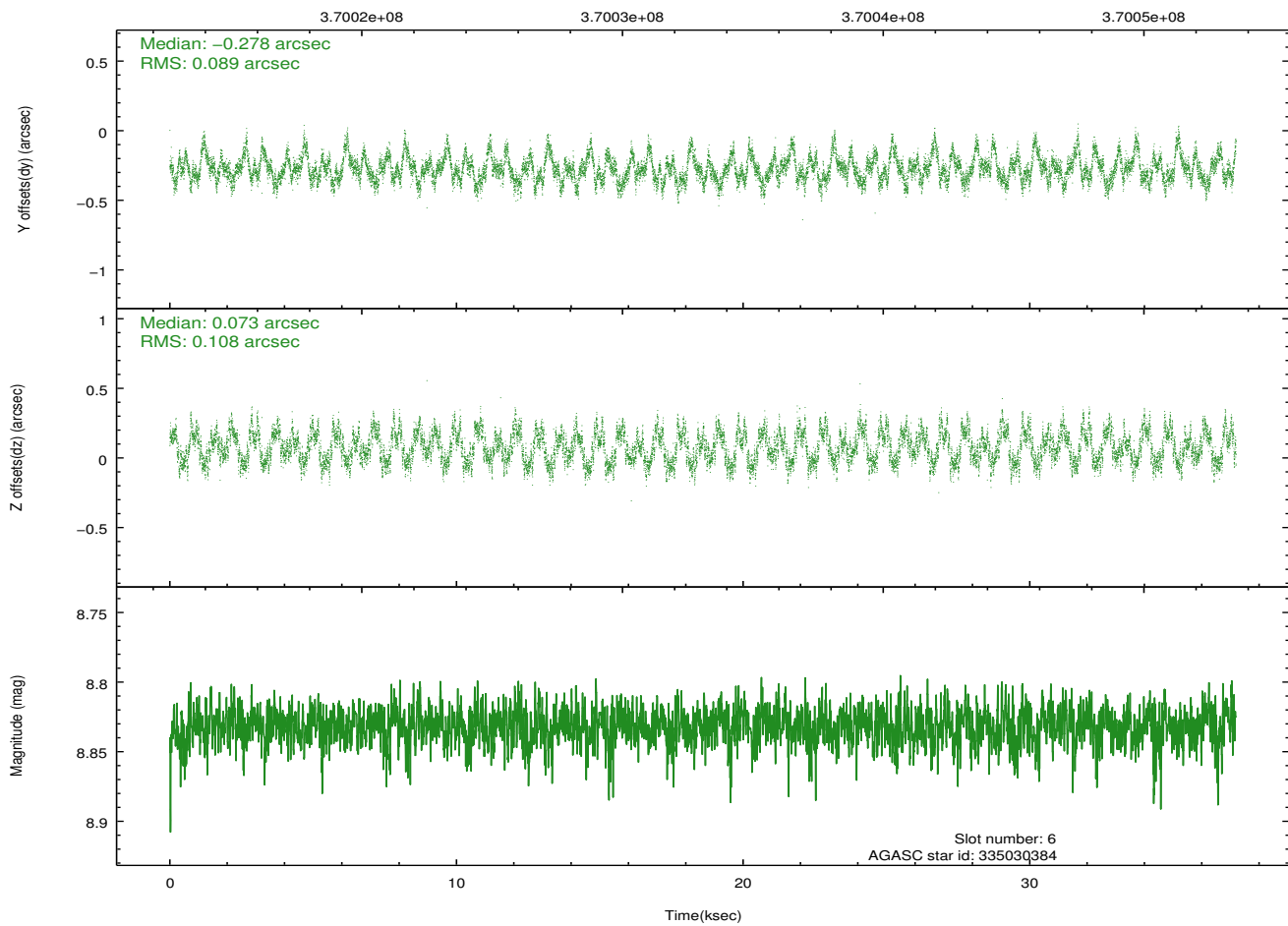
2.4.3 Slot 5



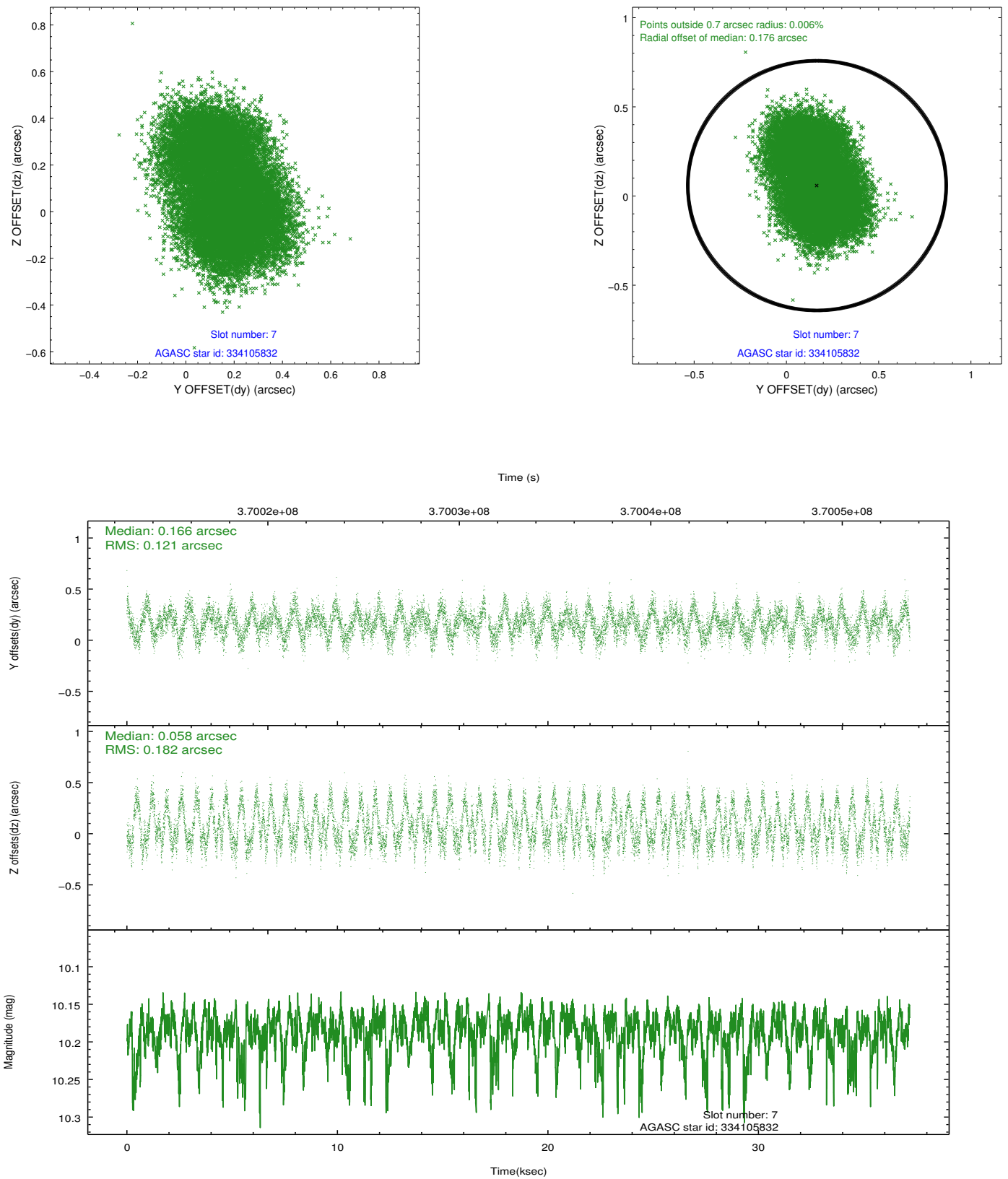
2.4.4 Slot 6



Time (s)

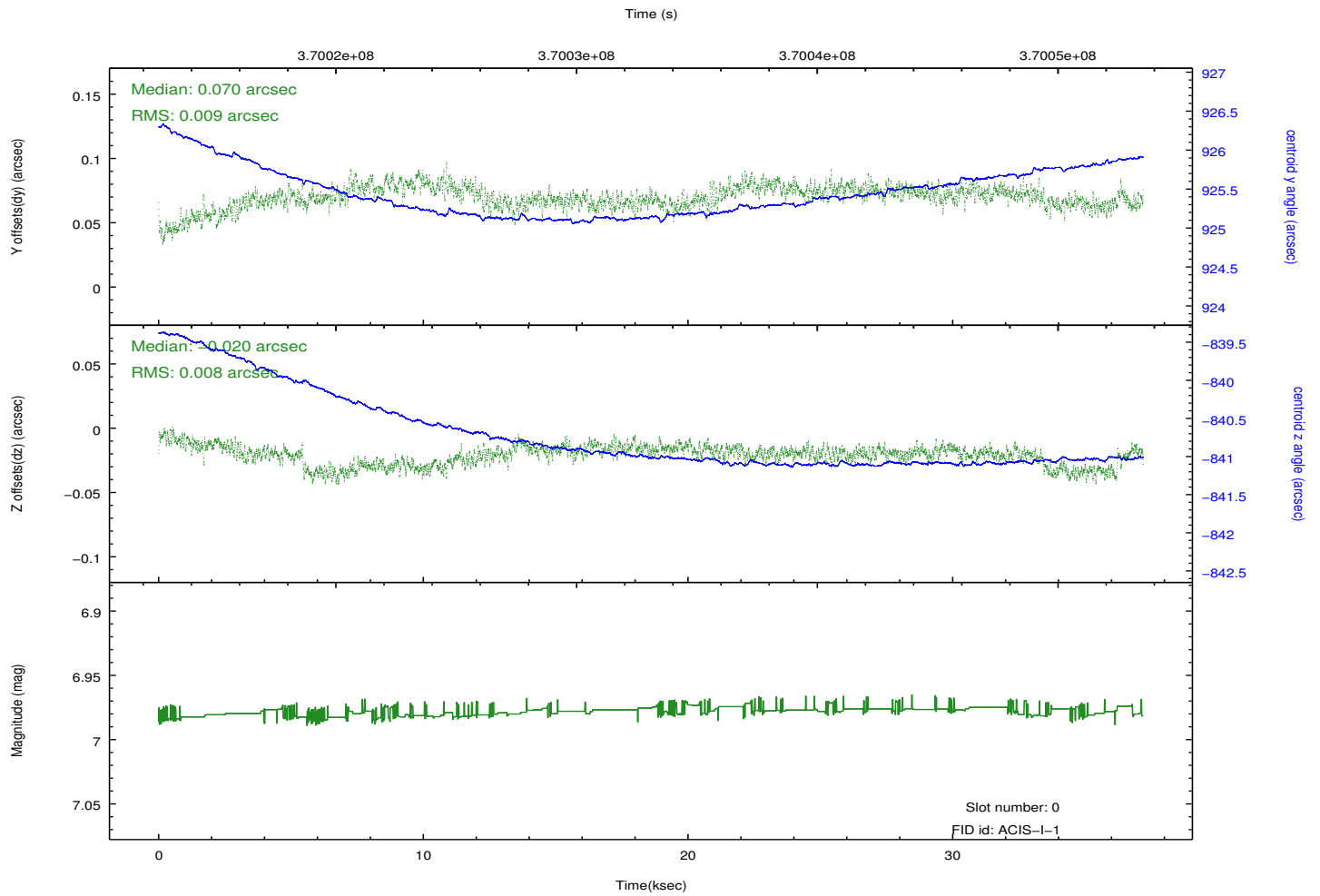
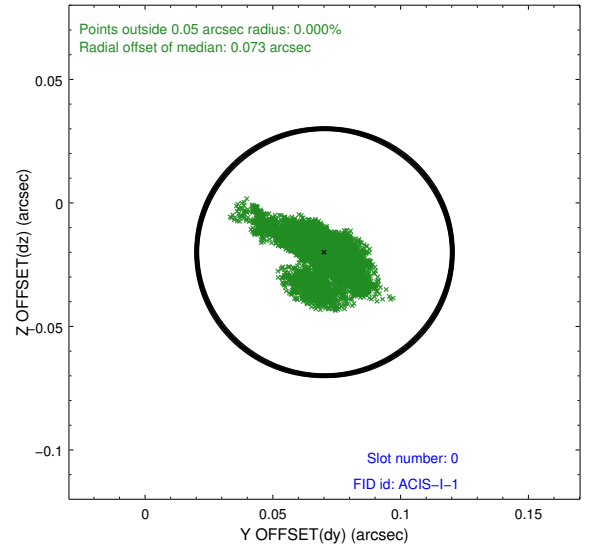
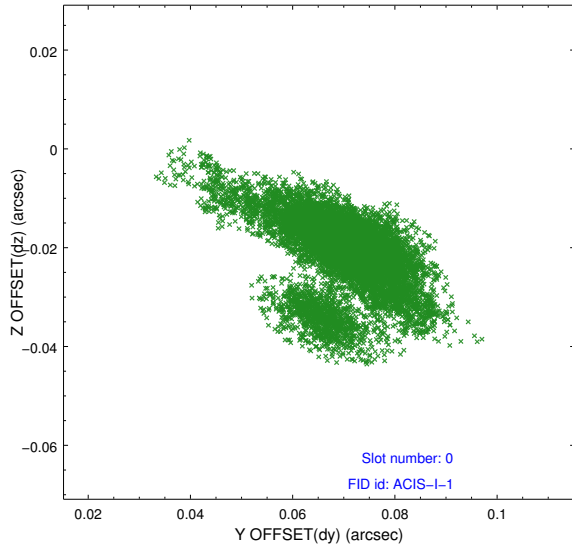


2.4.5 Slot 7

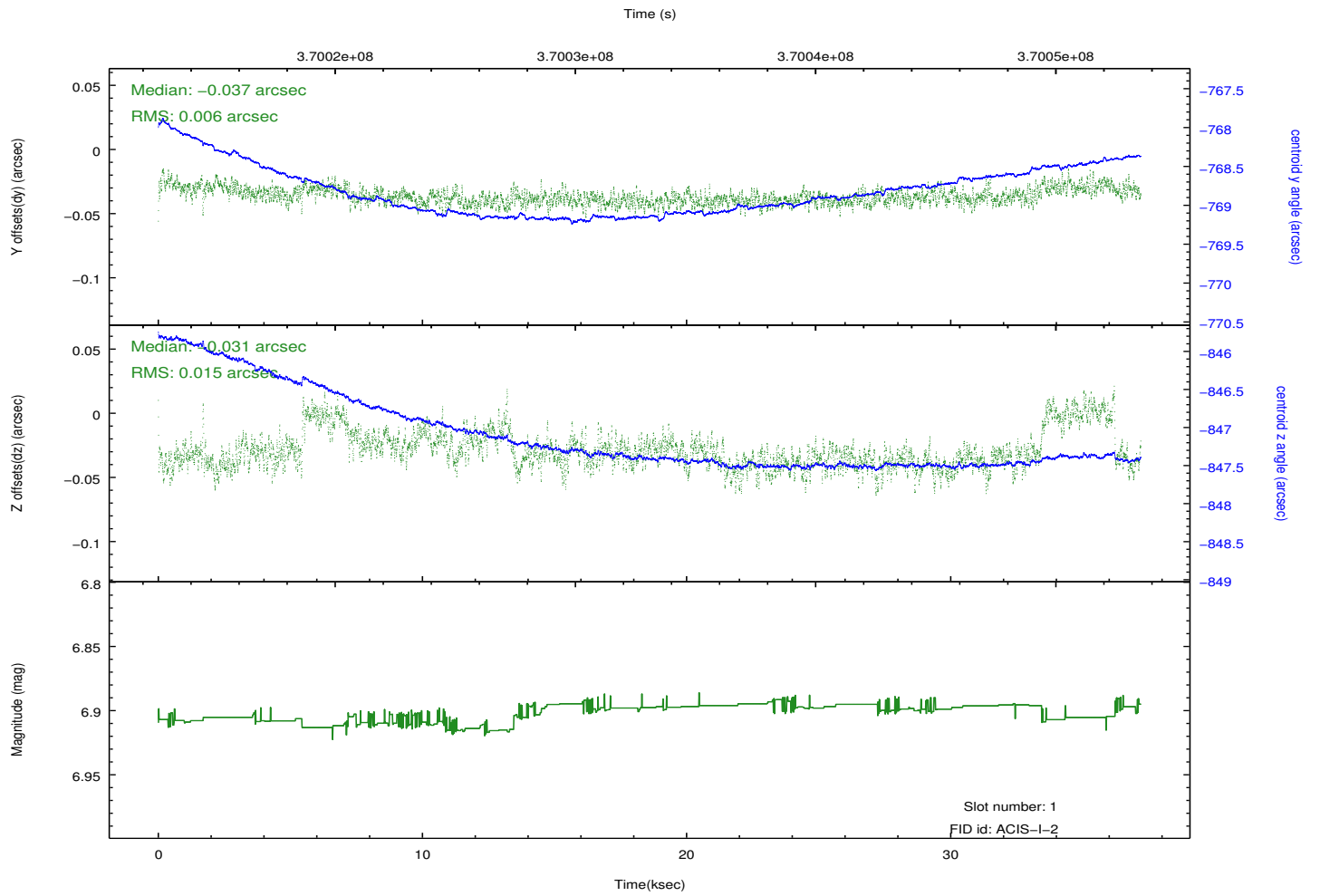
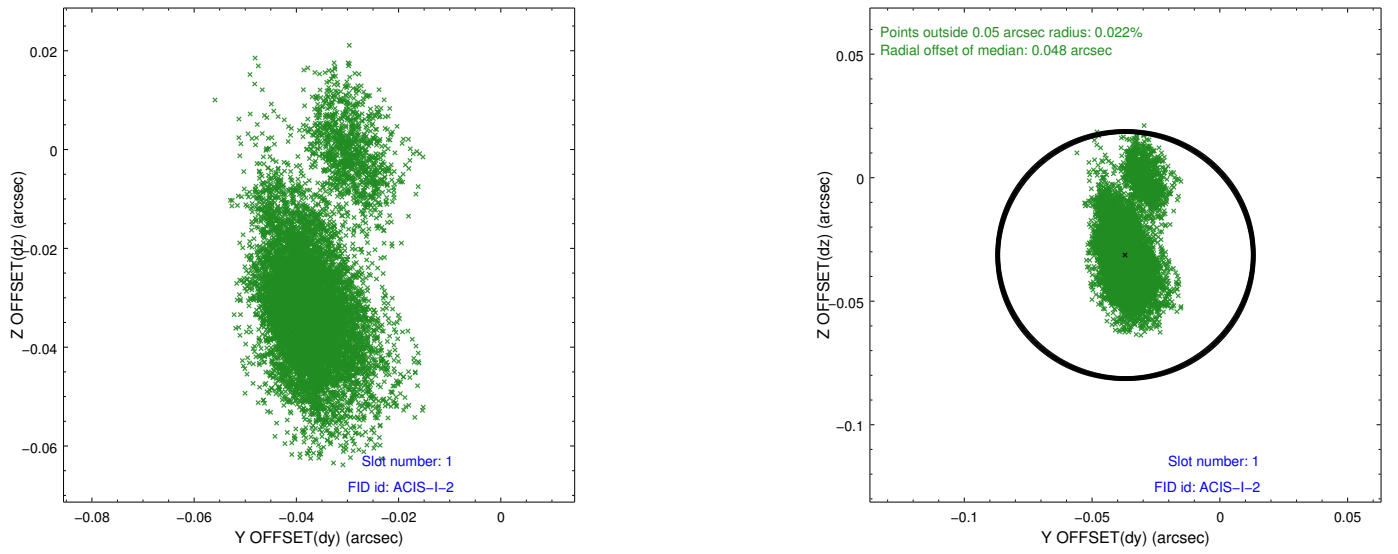


2.5 FID Slots

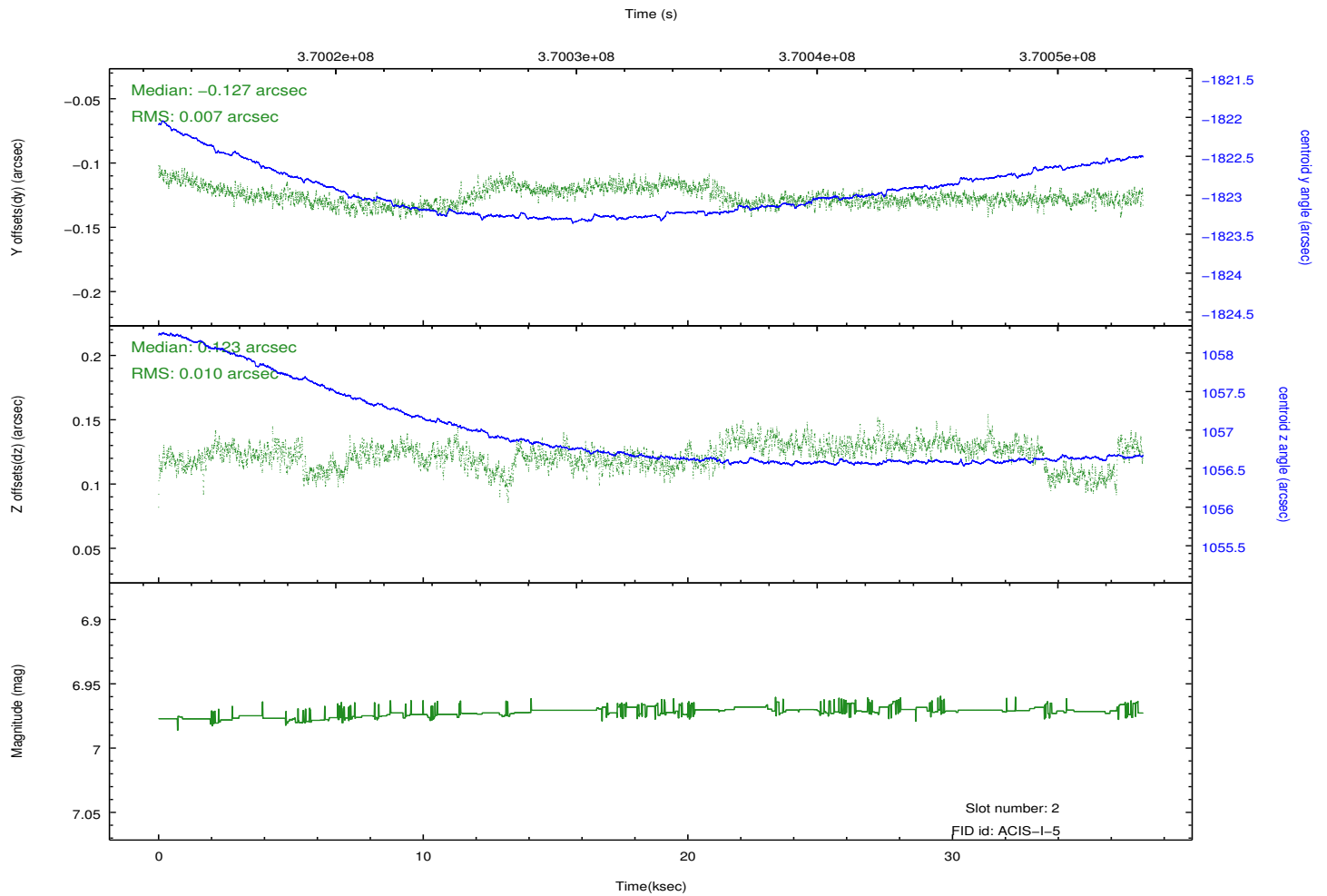
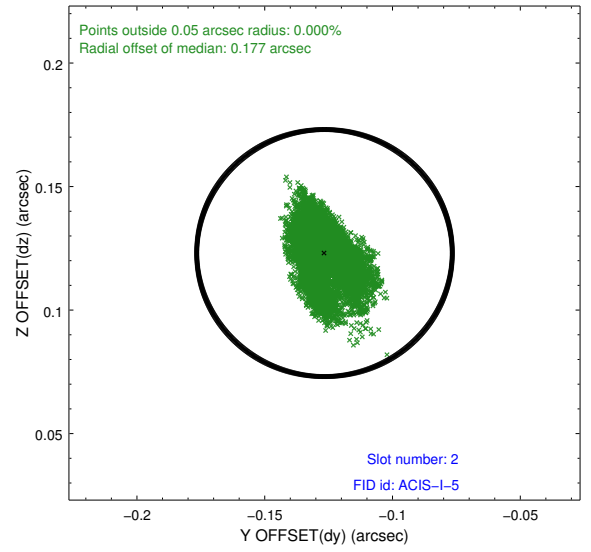
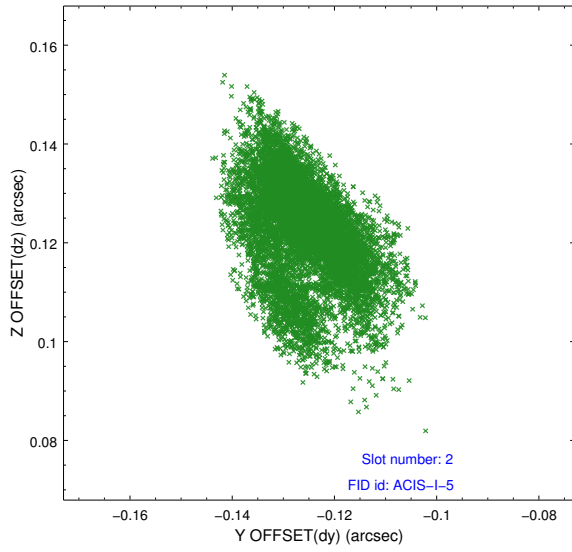
2.5.1 Slot 0



2.5.2 Slot 1



2.5.3 Slot 2



A Summary

A.1 Status

V&V Scientist	Jen Lauer
V&V Date (YYYY-MM-DD)	2012.06.18
V&V Edition	1
V&V Disposition and Status	OK
V&V Charge Time	37.178136454582

A.2 Comments