

V&V Reference Report

L2 ASCDS Version : 8.4.4

Observation 10898 - L2 Version 2
Chandra X-Ray Center

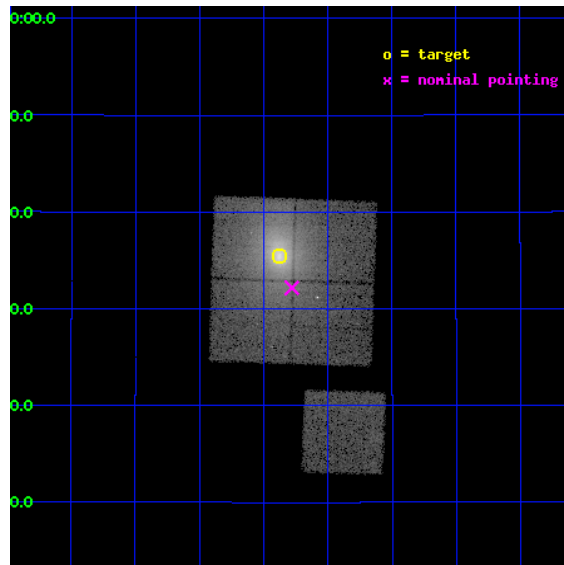
L2 Processing Date : Jun 4 2012

Contents

1	Front	2
2	OBI	3
2.1	OBI	3
2.1.1	Images	3
2.1.2	Bias	3
2.1.3	Parameters	4
2.1.4	Events	4
2.2	Compared Parameters	5
2.3	Aspect	6
2.4	Star Slots	9
2.4.1	Slot 3	9
2.4.2	Slot 4	10
2.4.3	Slot 5	11
2.4.4	Slot 6	12
2.4.5	Slot 7	13
2.5	FID Slots	14
2.5.1	Slot 0	14
2.5.2	Slot 1	15
2.5.3	Slot 2	16
A	Summary	17
A.1	Status	17
A.2	Comments	17

1 Front

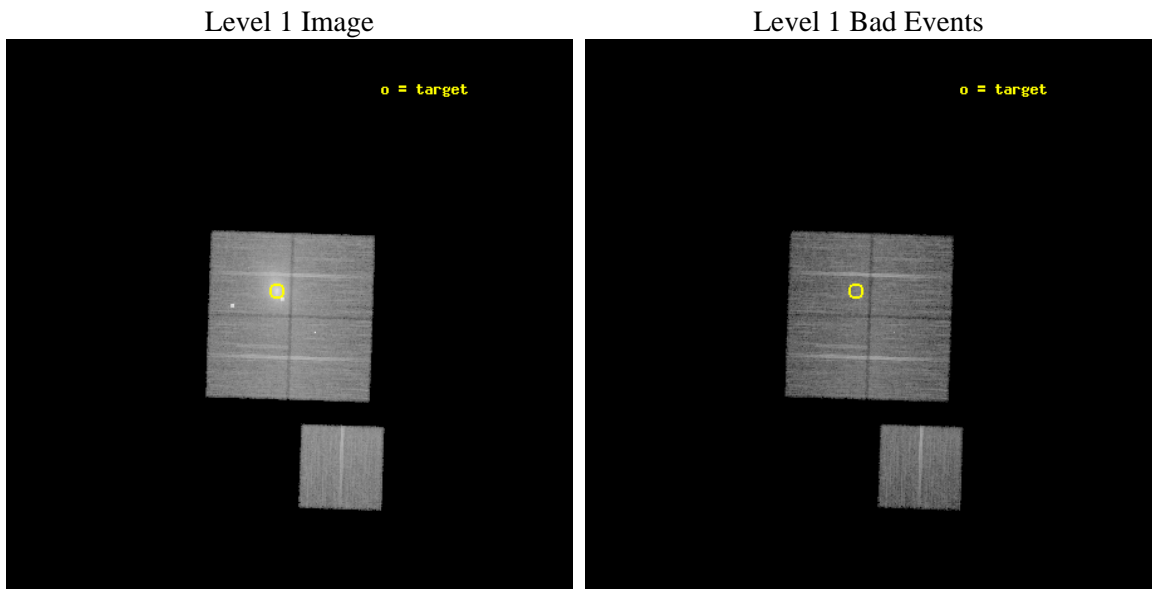
seq_num	890038	Sequence number
obs_id	10898	Observation id
title	Mapping the Contamination on the ACIS Filter with Abell 1795	Propo
observer	Dr. CXC Calibration	Principal investigator
object	Abell 1795	Source name
dtycycle	0	
cycle	P	events from which exps? Prim/Second/Both
ra_targ	207.219583	Observer's specified target RA [deg]
dec_targ	26.590833	Observer's specified target Dec [deg]
ra_nom	207.19519935715	Nominal RA [deg]
dec_nom	26.536233485253	Nominal Dec [deg]
roll_nom	181.88897884478	Nominal Roll [deg]
revision	2	Processing version of data
ontime	15946.35913223	Sum of GTIs [s]
liveltime	15738.008210629	Livetime [s]
ontime0	15940.077170908	Sum of GTIs [s]
ontime1	15946.35913223	Sum of GTIs [s]
ontime2	15949.500122666	Sum of GTIs [s]
ontime3	15949.500122666	Sum of GTIs [s]
ontime6	15946.359102428	Sum of GTIs [s]
l2events	180963	Number of level 2 events



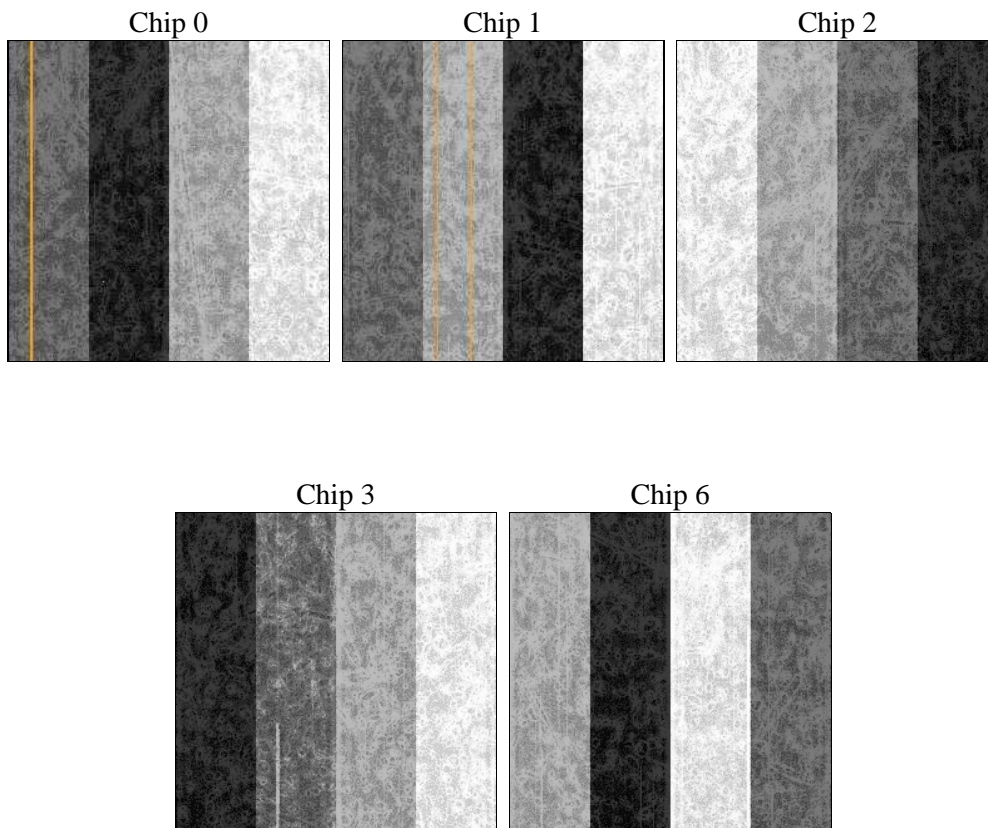
2 OBI

2.1 OBI

2.1.1 Images



2.1.2 Bias



2.1.3 Parameters

obi_num	0	Obi number	sched_exp_time	15904.720000	[s] Scheduled observation exposure time
ascdsver	8.4.4	Processing system revision	ontime	15946.35913223	Sum of GTIs [s]
caldbver	4.4.9	 	ontime0	15940.077170908	Sum of GTIs [s]
date	2012-06-04T15:14:29	Date and time of file creation	ontime1	15946.35913223	Sum of GTIs [s]
revision	2	Processing version of data	ontime2	15949.500122666	Sum of GTIs [s]
			ontime3	15949.500122666	Sum of GTIs [s]
			ontime6	15946.359102428	Sum of GTIs [s]
			l1events	822769	Number of level 1 events

2.1.4 Events

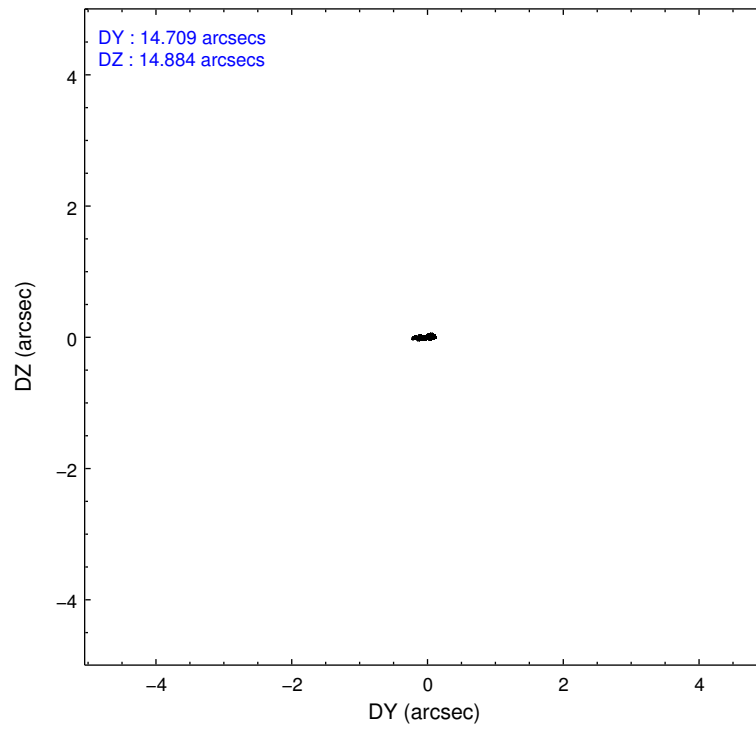
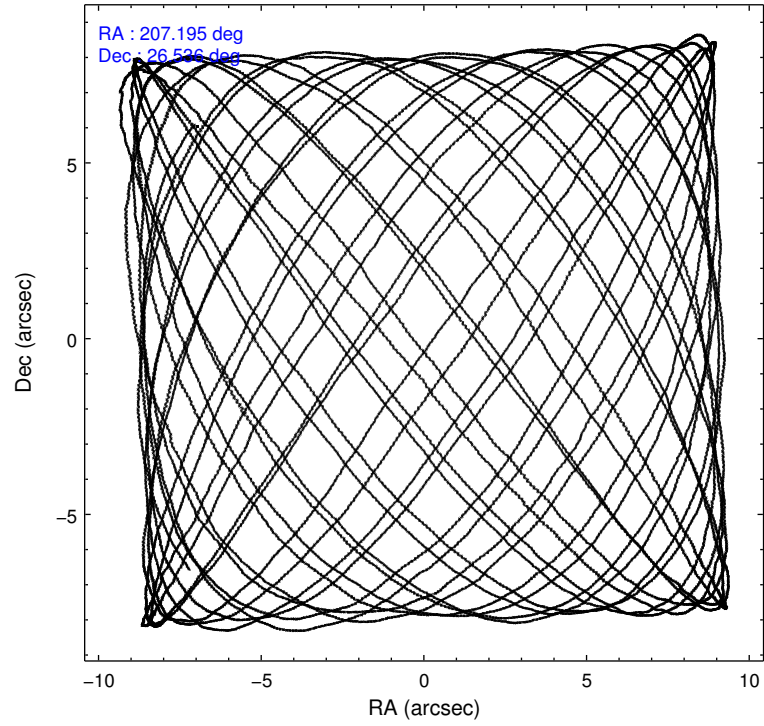
	ccd 0	ccd 1	ccd 2	ccd 3	ccd 6
level 1 events	148428	243196	149482	145981	135682
rejected events	119605	118928	128916	123349	121430
rejected %	80%	48%	86%	84%	89%

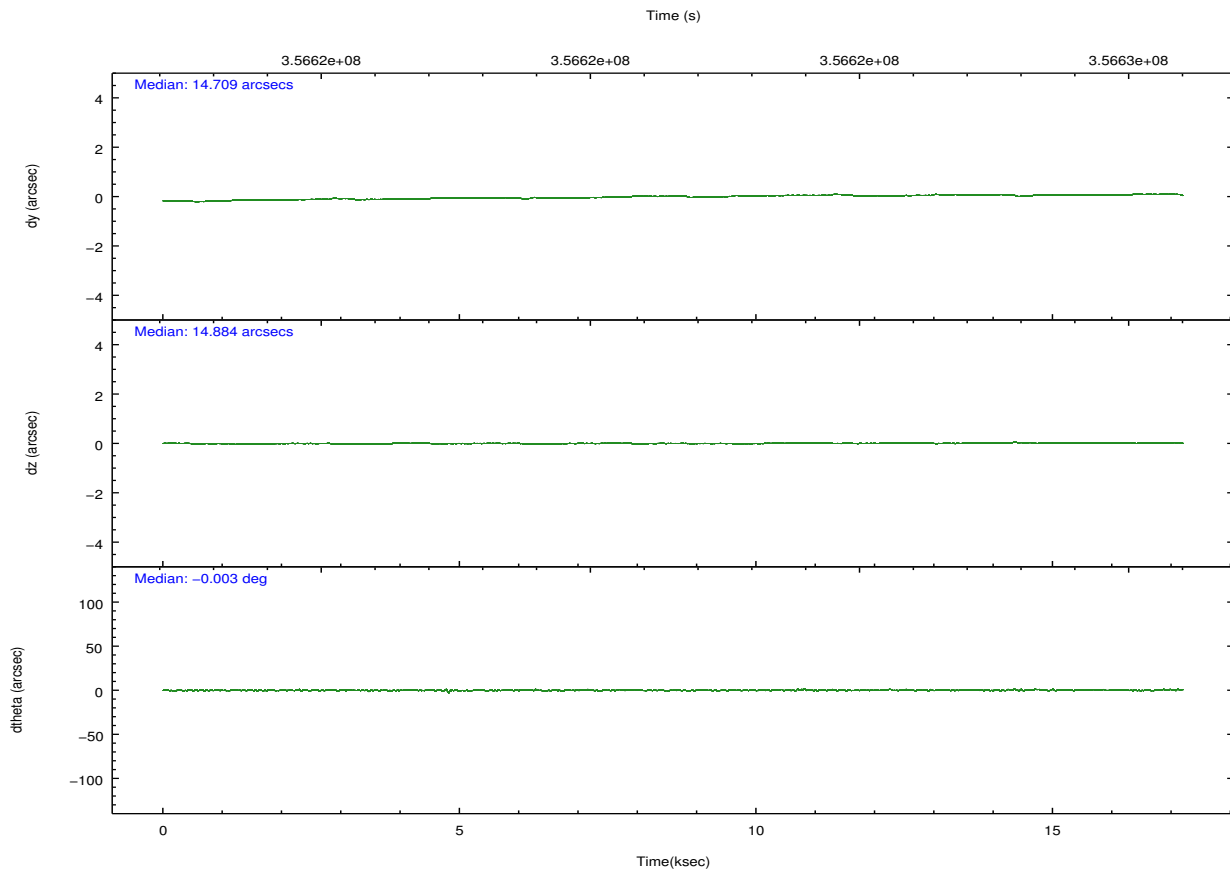
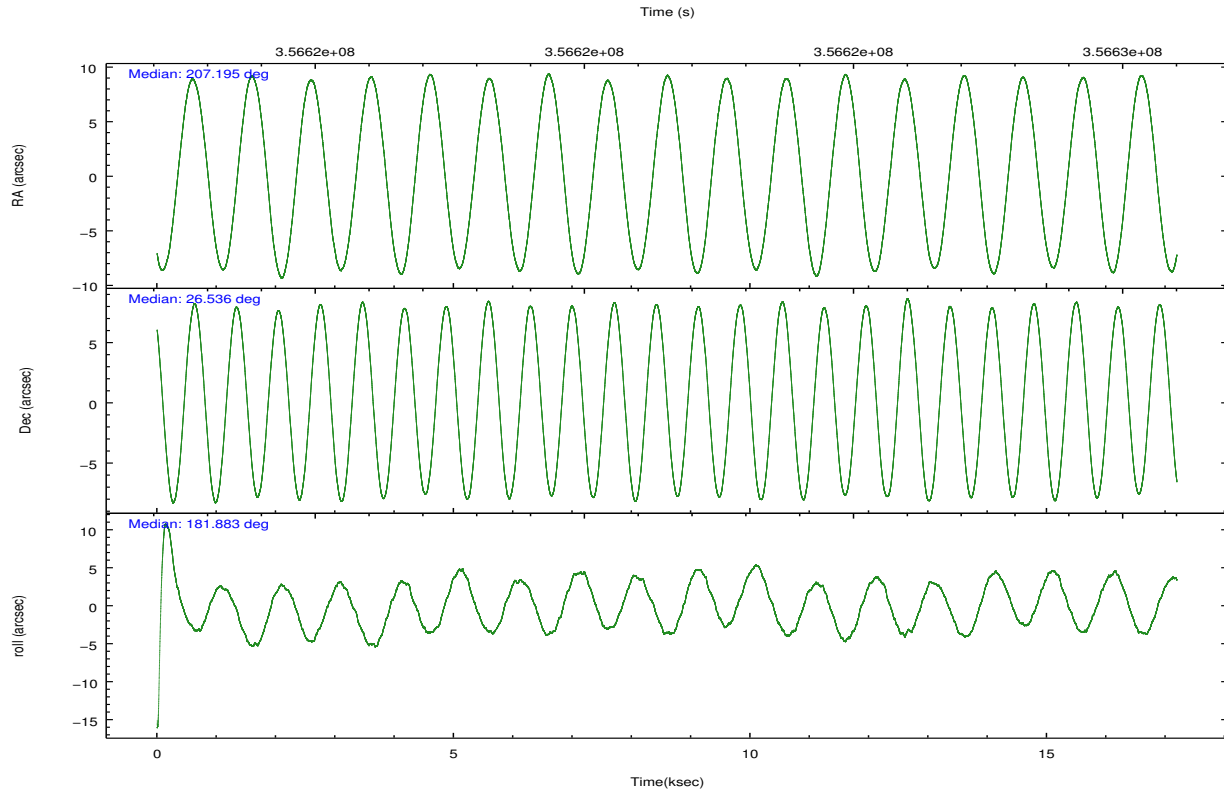
	ccd 0	ccd 1	ccd 2	ccd 3	ccd 6
grade 0 events	17040	95652	10590	12298	5125
	11%	39%	7%	8%	3%
grade 1 events	188	641	196	124	70
	0%	0%	0%	0%	0%
grade 2 events	4871	13914	4088	3829	3193
	3%	5%	2%	2%	2%
grade 3 events	1987	4595	1598	1782	1513
	1%	1%	1%	1%	1%
grade 4 events	1874	4485	1685	1788	1395
	1%	1%	1%	1%	1%
grade 5 events	5071	5864	4793	5714	5542
	3%	2%	3%	3%	4%
grade 6 events	3052	5648	2608	2942	3028
	2%	2%	1%	2%	2%
grade 7 events	114345	112397	123924	117504	115816
	77%	46%	82%	80%	85%

2.2 Compared Parameters

Parameter	Planned	Actual	Parameter	Planned	Actual
Instrument	ACIS	ACIS	Obspar format version number	7	7
Detector	ACIS-01236	ACIS-01236	Obspar file type	PREDICTED	ACTUAL
Grating	NONE	NONE	Obspar update status	NONE	UPDATED
Data mode	VFAINT	VFAINT	Number of optional ACIS chips dropped	0	0
Observation mode	POINTING	POINTING	On-chip summing requested	N	N
[deg] Pointing RA	207.221253	207.1951993571495	Subarray requested	NONE	NONE
[deg] Pointing Dec	26.550855	26.53623348525311	Alternating exposures requested	N	N
[deg] Pointing Roll	181.668650	181.8889788447846	[s] Primary exposure time	0.000000	3.1
[mm] SIM focus pos	-0.782348	-0.7809083437167272			
[mm] SIM defocus	0	0.001439871863259334			
[mm] SIM translation stage pos	-233.592463	-233.5874344608287			
[mm] SIM translation stage offset	0	-0.005018542100998502			
[s] Observation start time (MET)	356614223.184000	356612741.14197			
Observation start date	2009-04-20T11:29:17	2009-04-20T11:05:41			
[s] Observation end time (MET)	356630128.184000	356630366.01784			
Observation end date	2009-04-20T15:54:22	2009-04-20T15:59:26			
Read mode	TIMED	TIMED			

2.3 Aspect



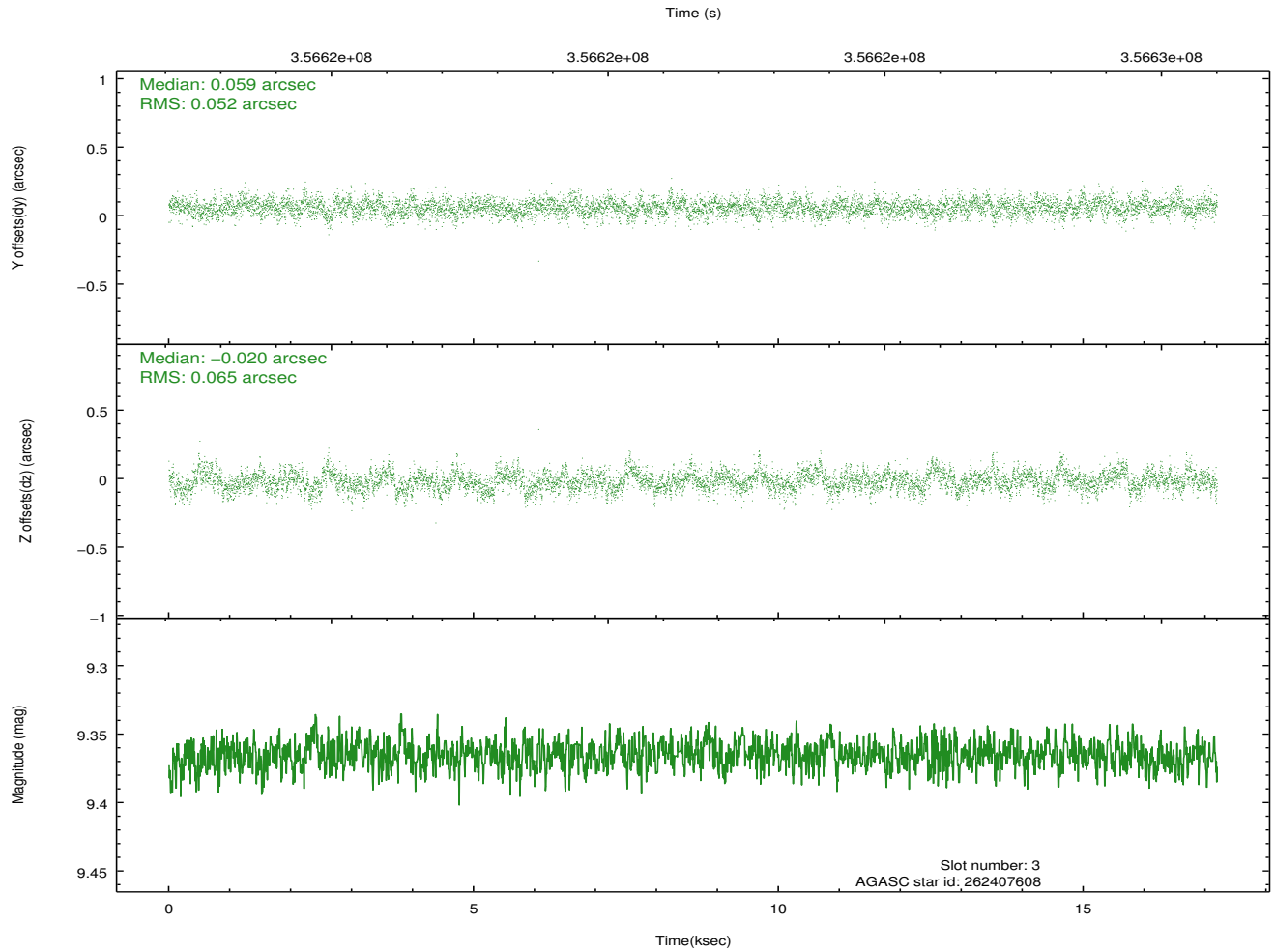
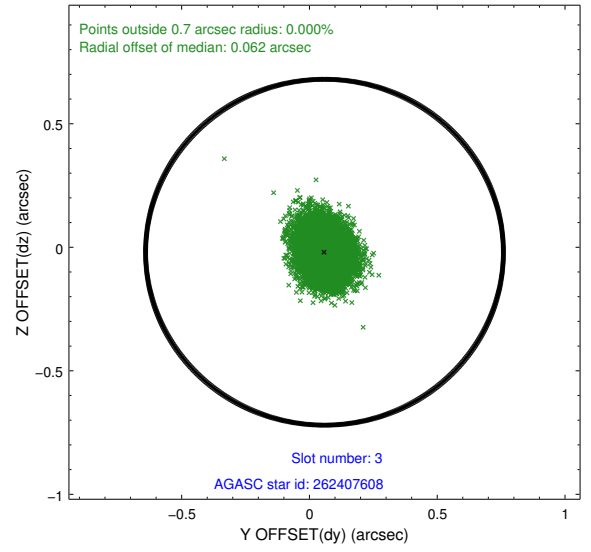
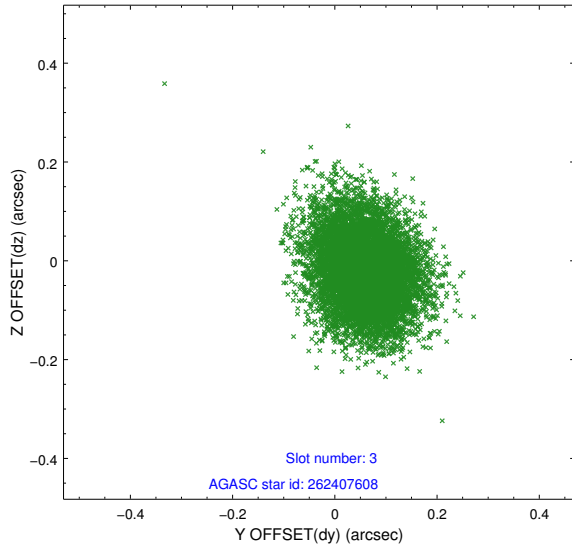


Slot Statistics

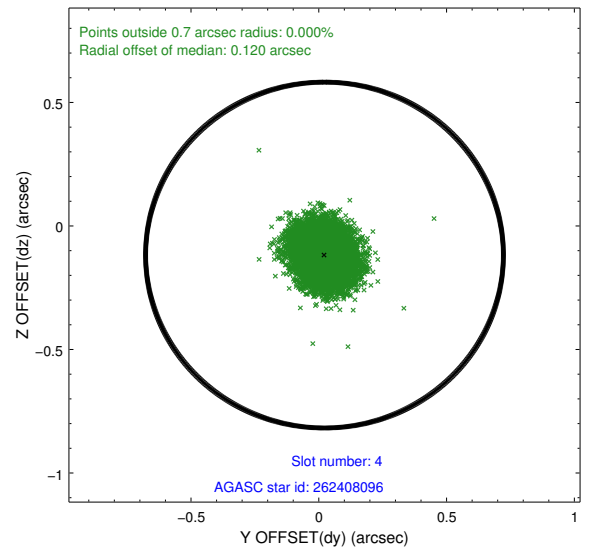
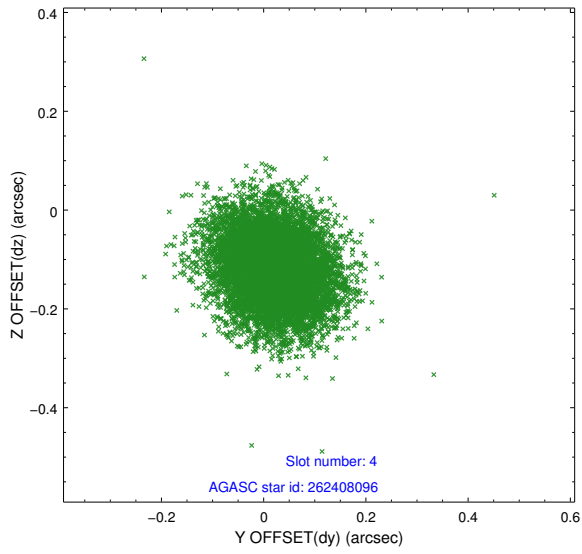
slot	status	id	mag	n_pts	med_dy	med_dz	dr1	dr2	ra	dec	mean_y	mean_z
0	FID	ACIS-I-1	7.10	4194	0.040	-0.011	0.006	0.011	0.000000	0.000000	924.83	-838.48
1	FID	ACIS-I-5	7.08	4193	-0.231	0.039	0.006	0.010	0.000000	0.000000	-1823.44	1058.90
2	FID	ACIS-I-6	7.09	4194	0.100	0.043	0.007	0.012	0.000000	0.000000	390.14	1703.71
3	GUIDE	262407608	9.37	8385	0.059	-0.020	0.088	0.148	207.378401	26.435507	-494.07	429.75
4	GUIDE	262408096	9.34	8368	0.022	-0.118	0.095	0.152	207.011678	26.515421	679.11	107.40
5	GUIDE	262408512	7.99	8387	-0.181	0.007	0.065	0.104	207.800210	27.128796	-1914.53	-2029.90
6	GUIDE	262408936	9.69	8374	-0.074	0.086	0.135	0.223	207.154731	26.726554	195.30	-638.30
7	GUIDE	262409552	8.19	8384	0.181	0.047	0.093	0.151	206.584269	27.192805	1972.35	-2374.06

2.4 Star Slots

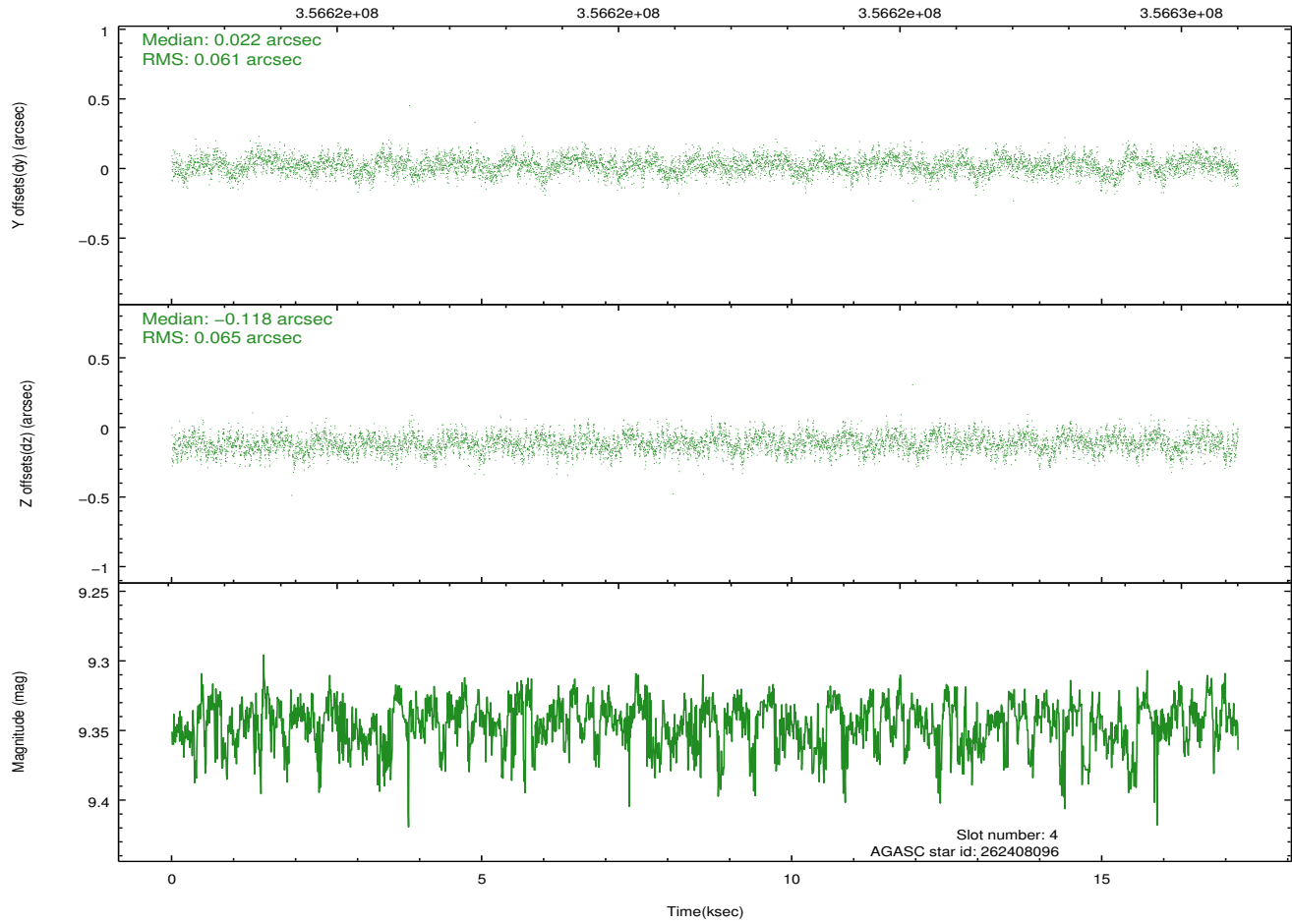
2.4.1 Slot 3



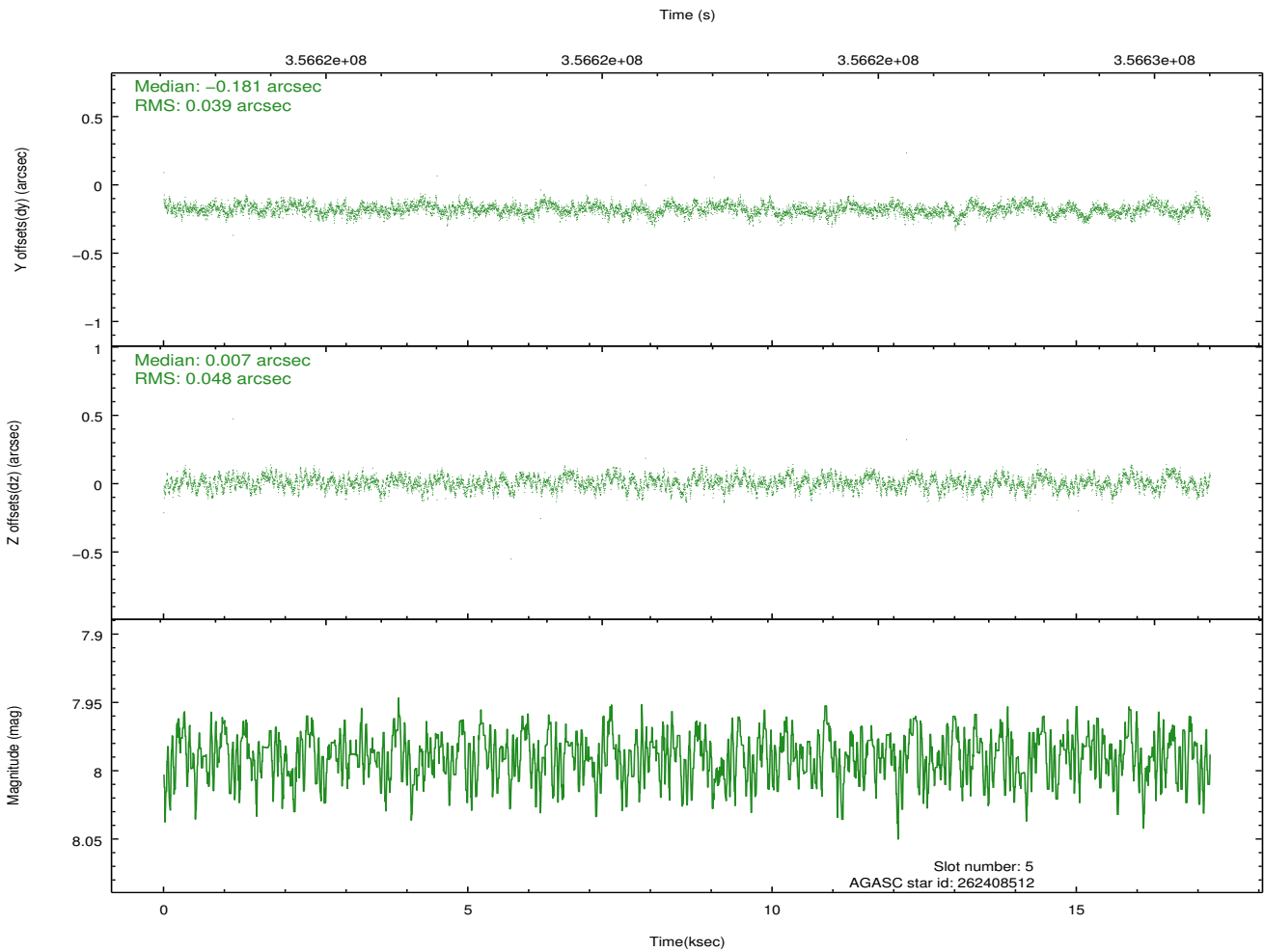
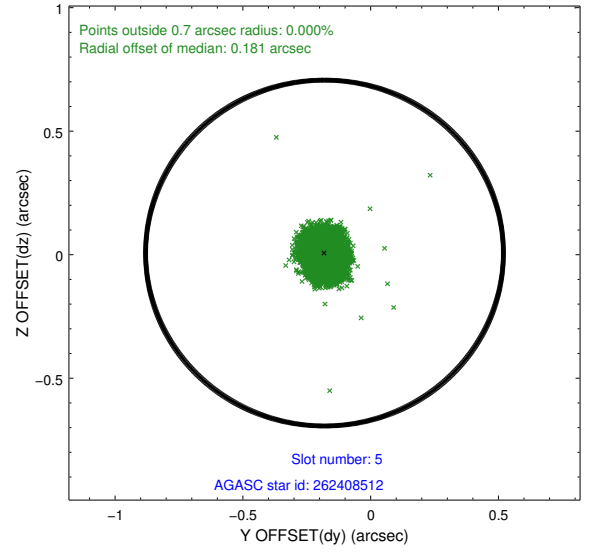
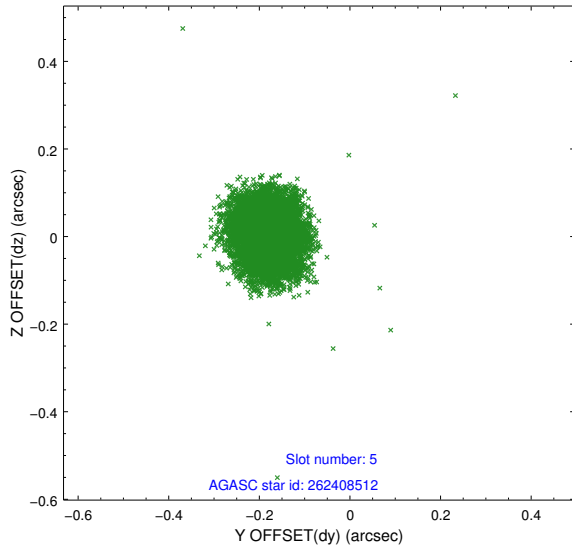
2.4.2 Slot 4



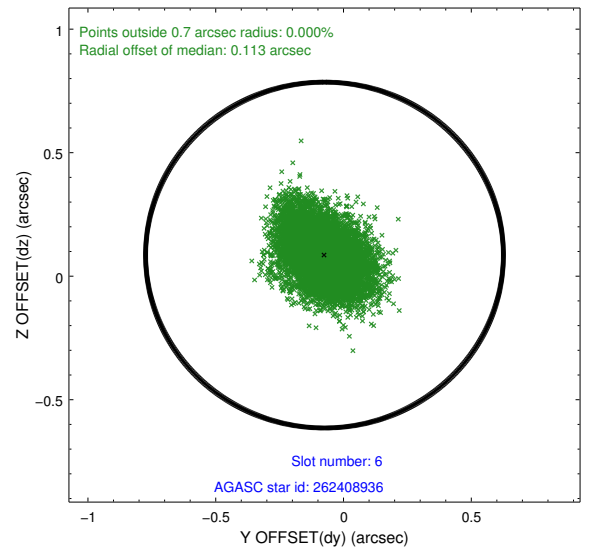
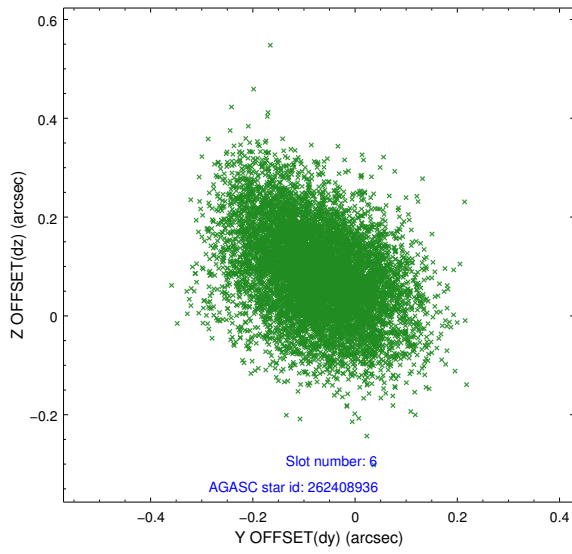
Time (s)



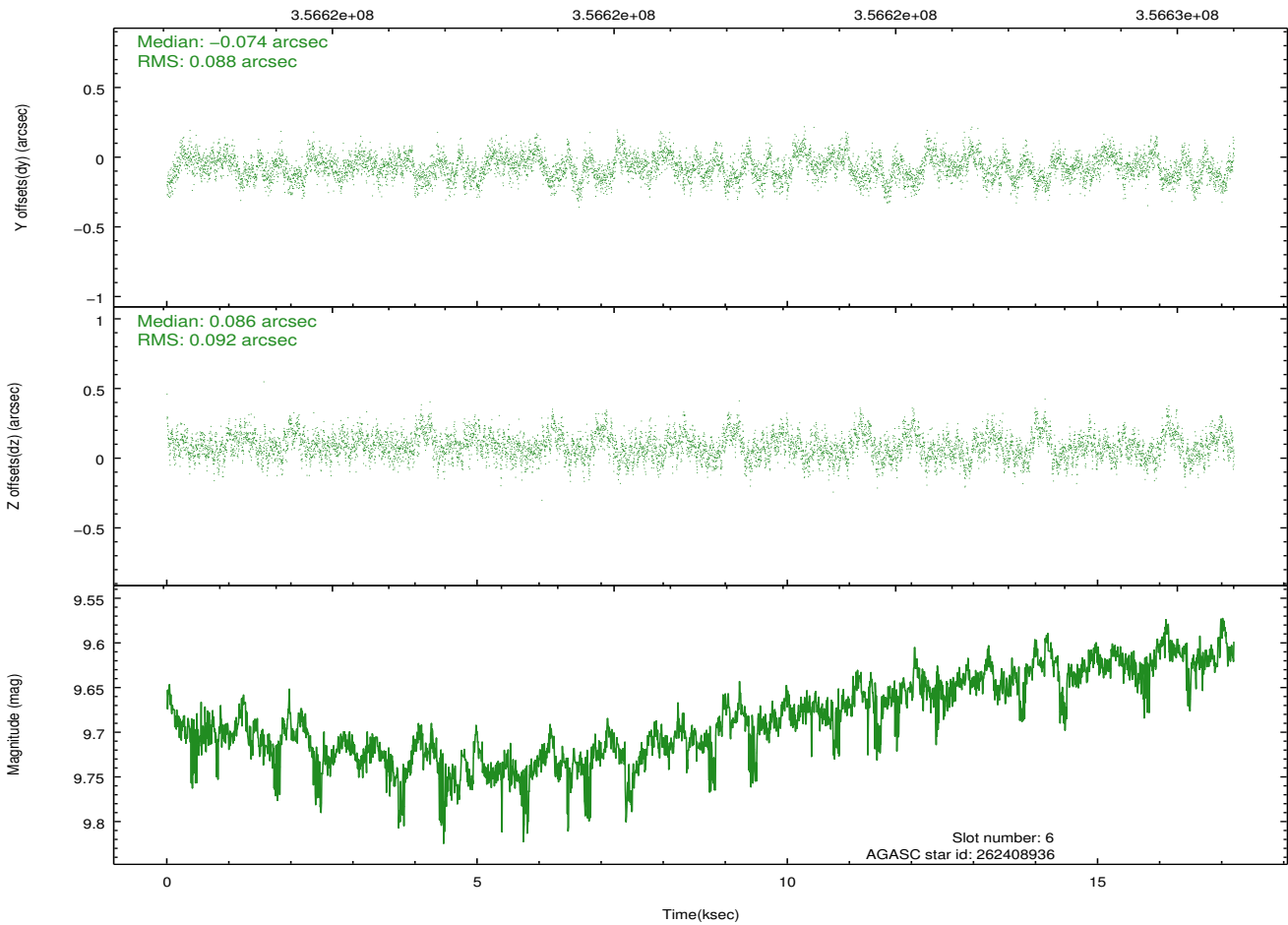
2.4.3 Slot 5



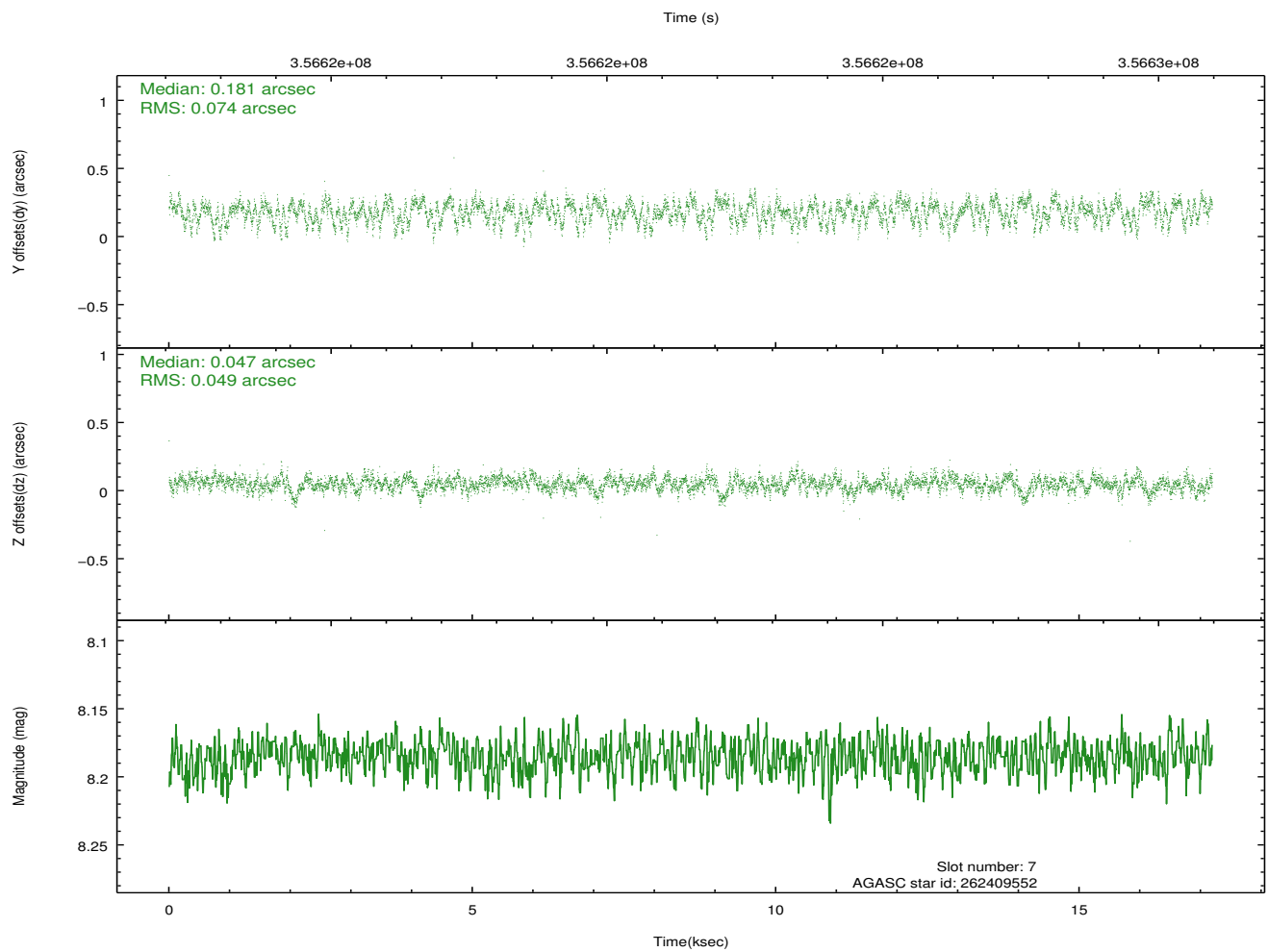
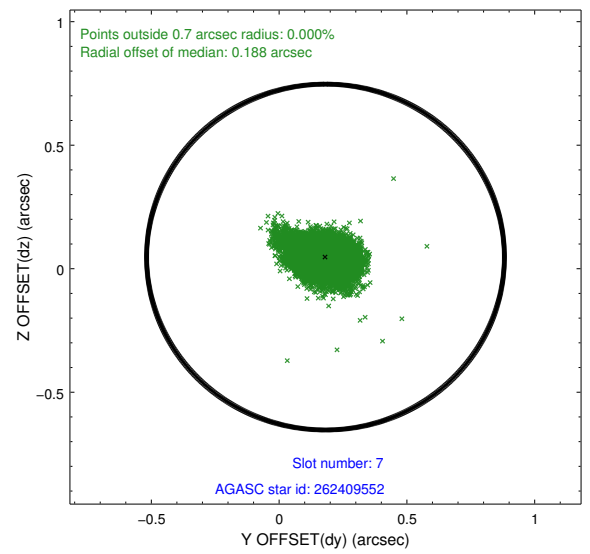
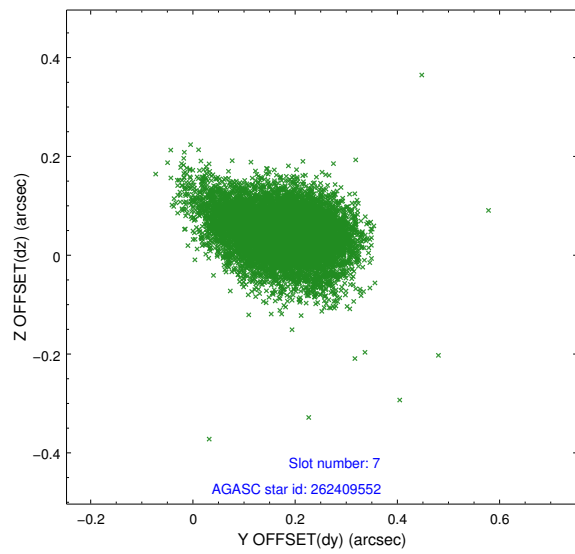
2.4.4 Slot 6



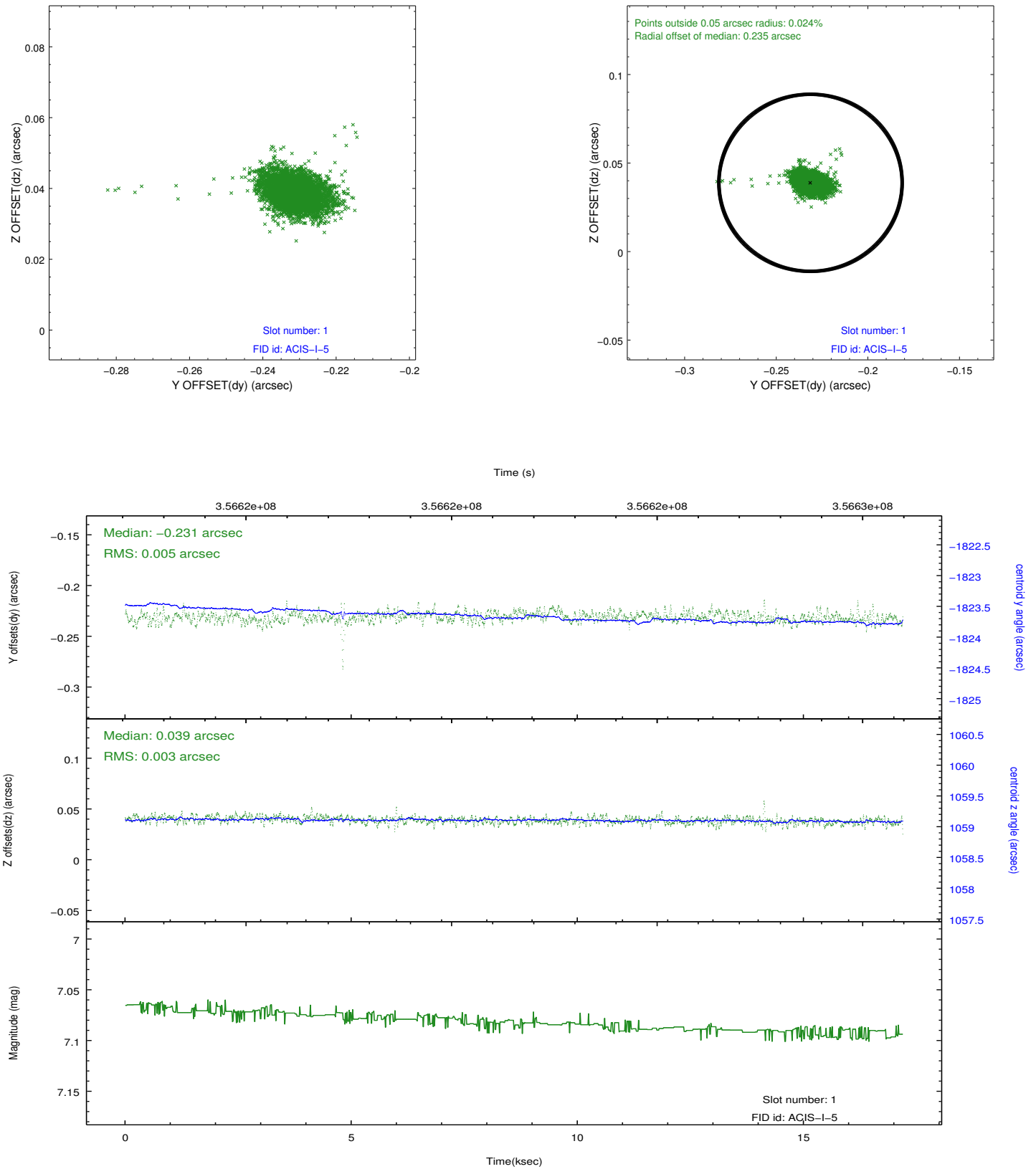
Time (s)



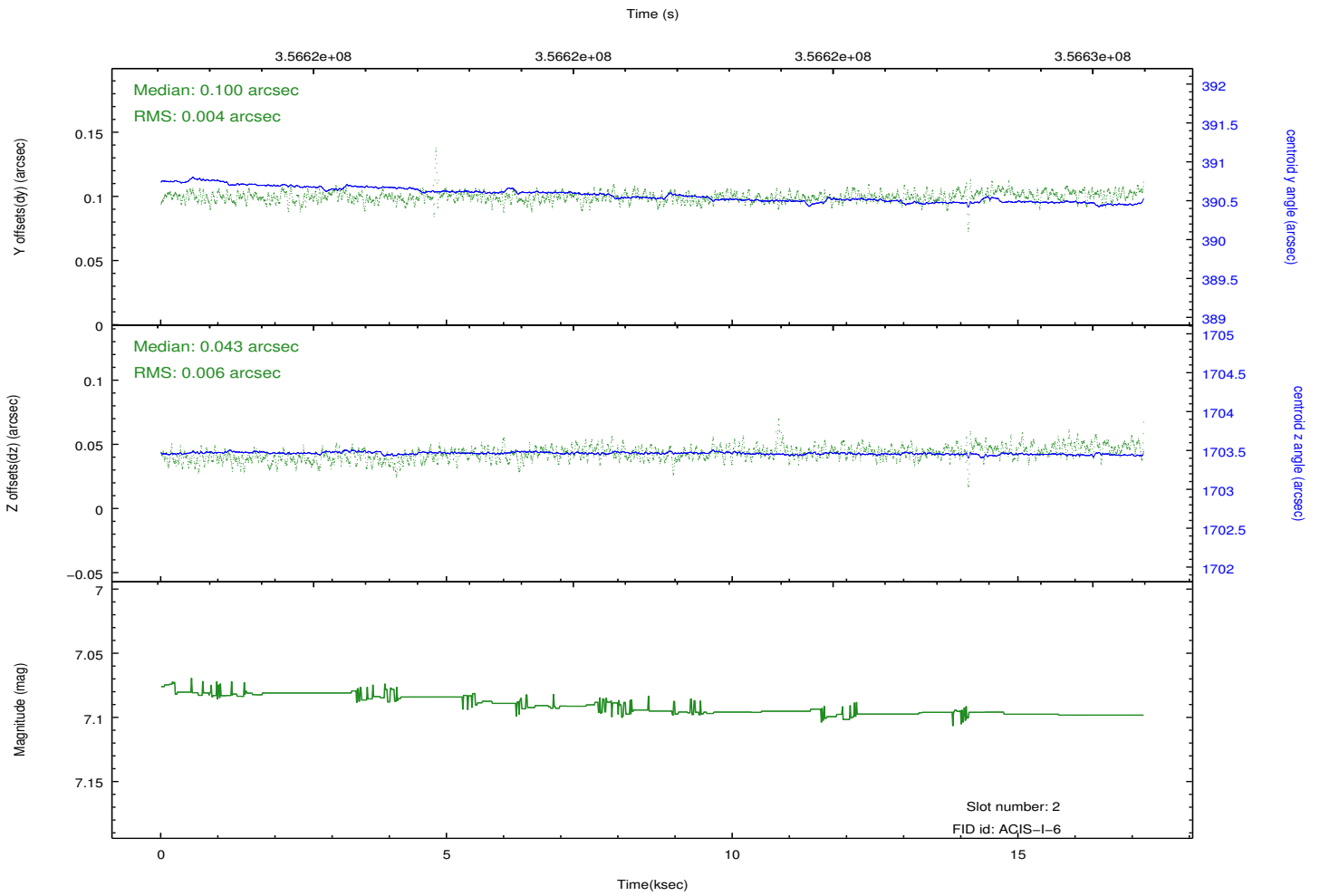
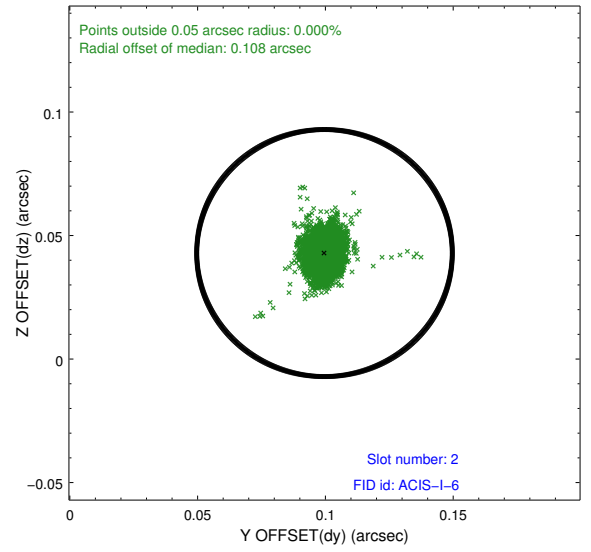
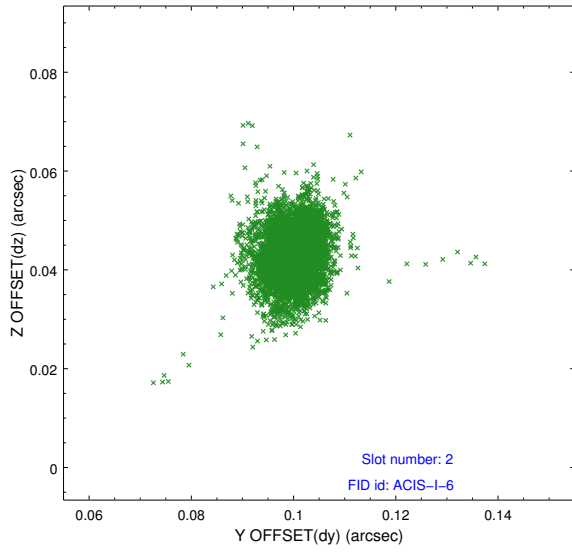
2.4.5 Slot 7



2.5.2 Slot 1



2.5.3 Slot 2



A Summary

A.1 Status

V&V Scientist	Beth Sundheim
V&V Date (YYYY-MM-DD)	2012.06.08
V&V Edition	1
V&V Disposition and Status	OK
V&V Charge Time	15.9463591

A.2 Comments