

V&V Reference Report

L2 ASCDS Version : 8.4.5

Observation 10938 - L2 Version 2
Chandra X-Ray Center

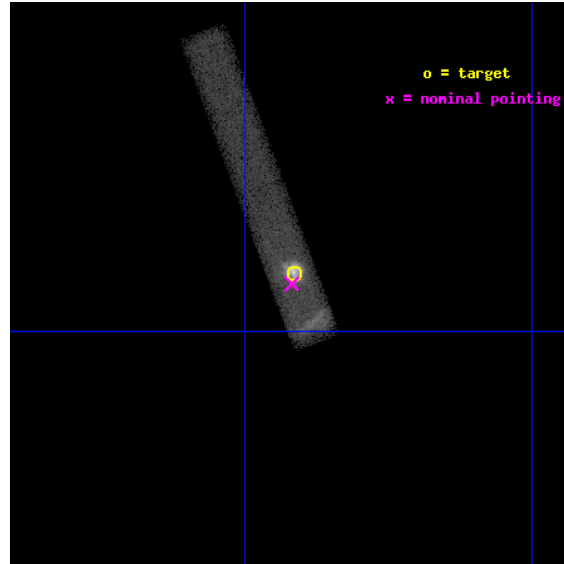
L2 Processing Date : Jun 11 2012

Contents

1	Front	2
2	OBI	3
2.1	OBI	3
2.1.1	Images	3
2.1.2	Bias	3
2.1.3	Parameters	4
2.1.4	Events	4
2.2	Compared Parameters	5
2.3	Aspect	6
2.4	Star Slots	9
2.4.1	Slot 3	9
2.4.2	Slot 4	10
2.4.3	Slot 5	11
2.4.4	Slot 6	12
2.4.5	Slot 7	13
2.5	FID Slots	14
2.5.1	Slot 0	14
2.5.2	Slot 1	15
2.5.3	Slot 2	16
A	Summary	17
A.1	Status	17
A.2	Comments	17

1 Front

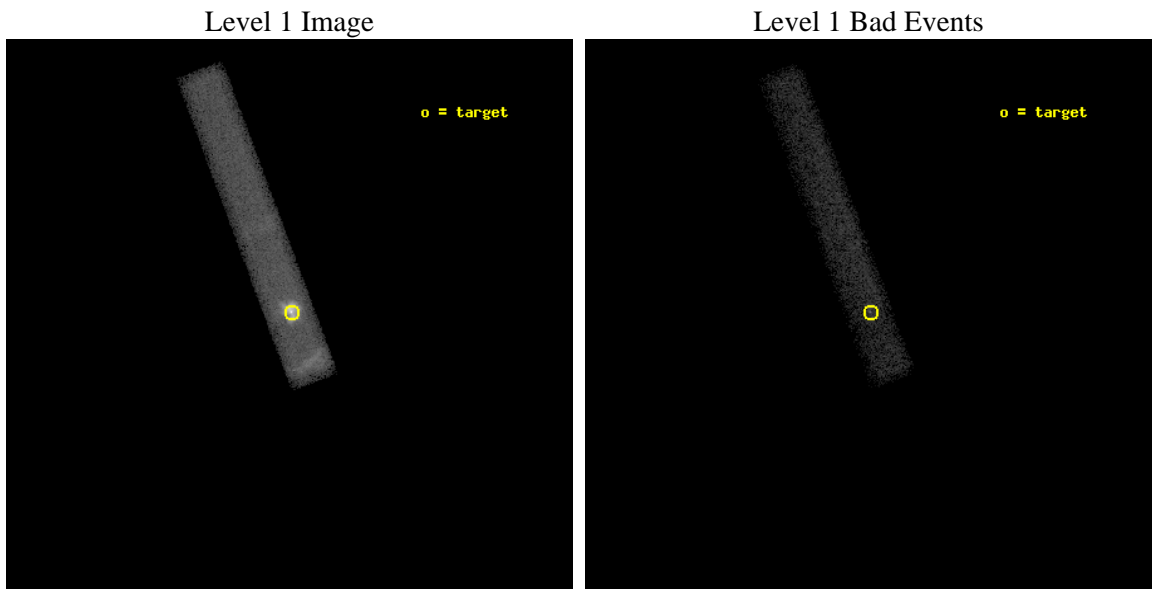
seq_num	501178	Sequence number
obs_id	10938	Observation id
title	Chandra Monitoring of the Rotation-Powered Pulsar/Magnetar Transition Object PSR J1846-0258	Proposal title
observer	Dr. Fotis Gavriil	Principal investigator
object	PSR J1846-0258	Source name
dtcycle	0	
cycle	P	events from which exps? Prim/Second/Both
ra_targ	281.60375	Observer's specified target RA [deg]
dec_targ	-2.975028	Observer's specified target Dec [deg]
ra_nom	281.60468595299	Nominal RA [deg]
dec_nom	-2.9797845275835	Nominal Dec [deg]
roll_nom	249.41465353315	Nominal Roll [deg]
revision	2	Processing version of data
ontime	49186.797068238	Sum of GTIs [s]
livetime	44609.828648865	Livetime [s]
ontime7	49186.797068238	Sum of GTIs [s]
l2events	78306	Number of level 2 events



2 OBI

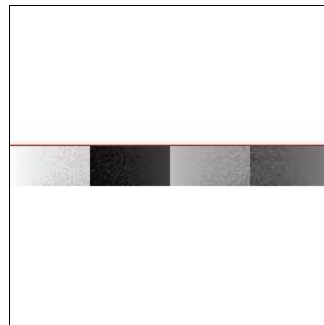
2.1 OBI

2.1.1 Images



2.1.2 Bias

Chip 7



2.1.3 Parameters

obi_num	0	Obi number	sched_exp_time	49000.000000	[s] Scheduled observation exposure time
ascdsver	8.4.5	Processing system revision	ontime	49186.797068238	Sum of GTIs [s]
caldbver	4.4.10	 	ontime7	49186.797068238	Sum of GTIs [s]
date	2012-06-11T16:28:23	Date and time of file creation	l1events	113541	Number of level 1 events
revision	2	Processing version of data			

2.1.4 Events

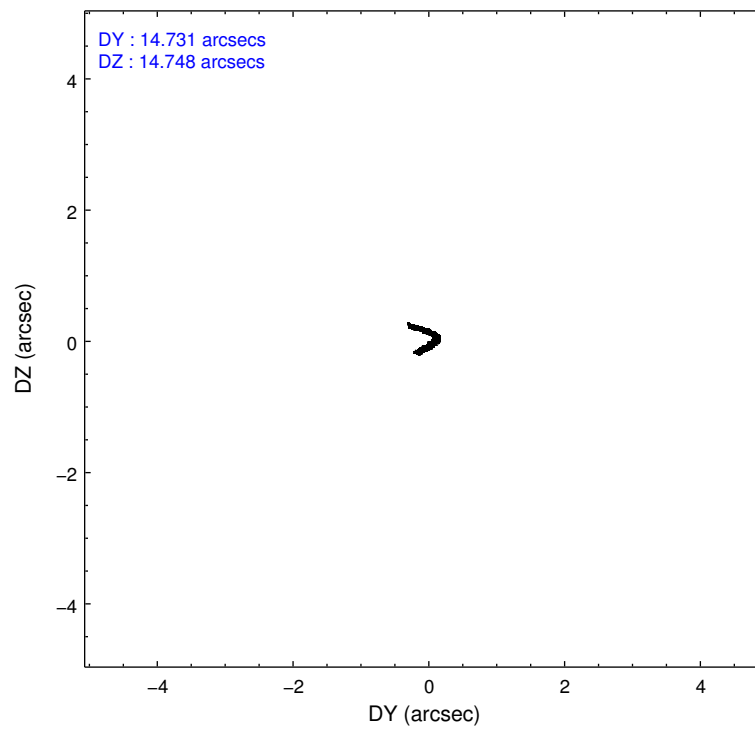
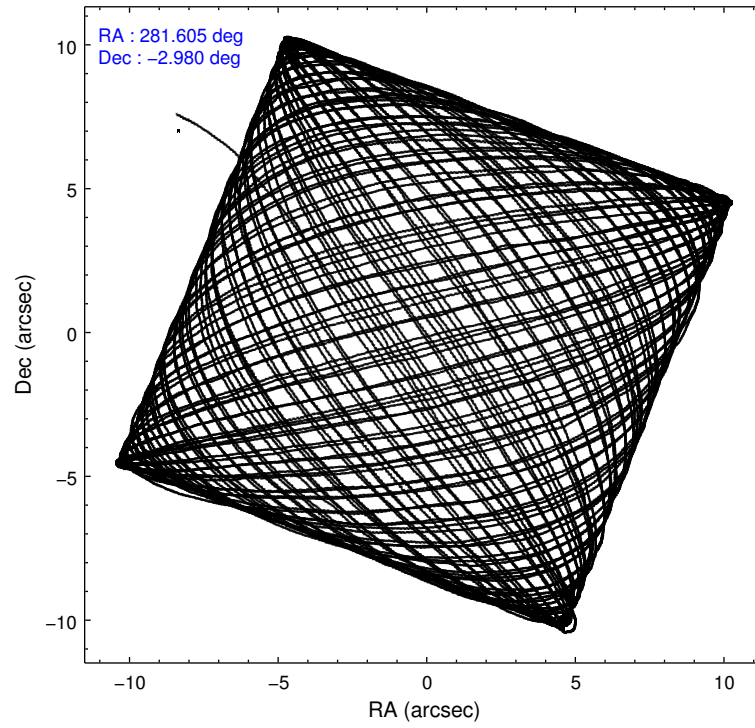
	ccd 7
level 1 events	113541
rejected events	33355
rejected %	29%

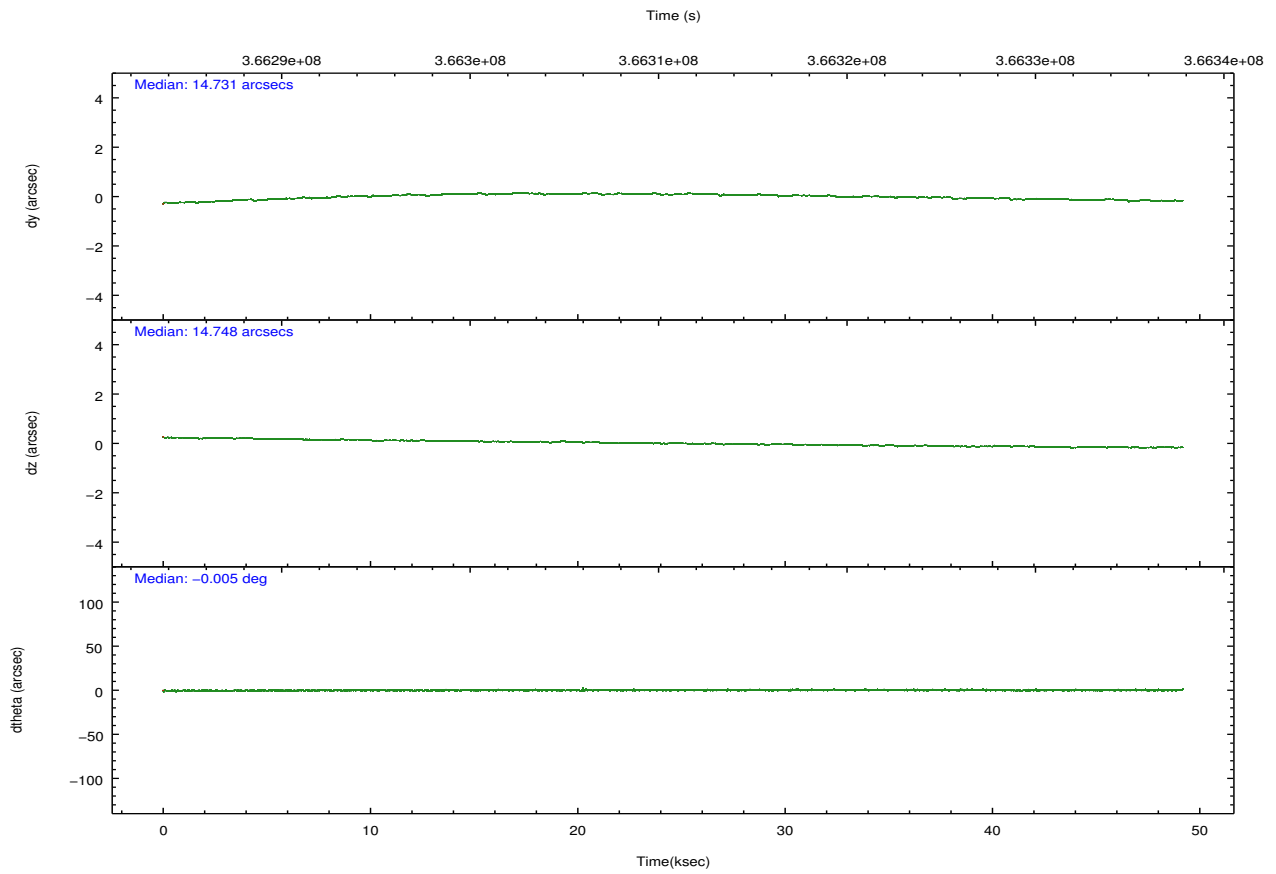
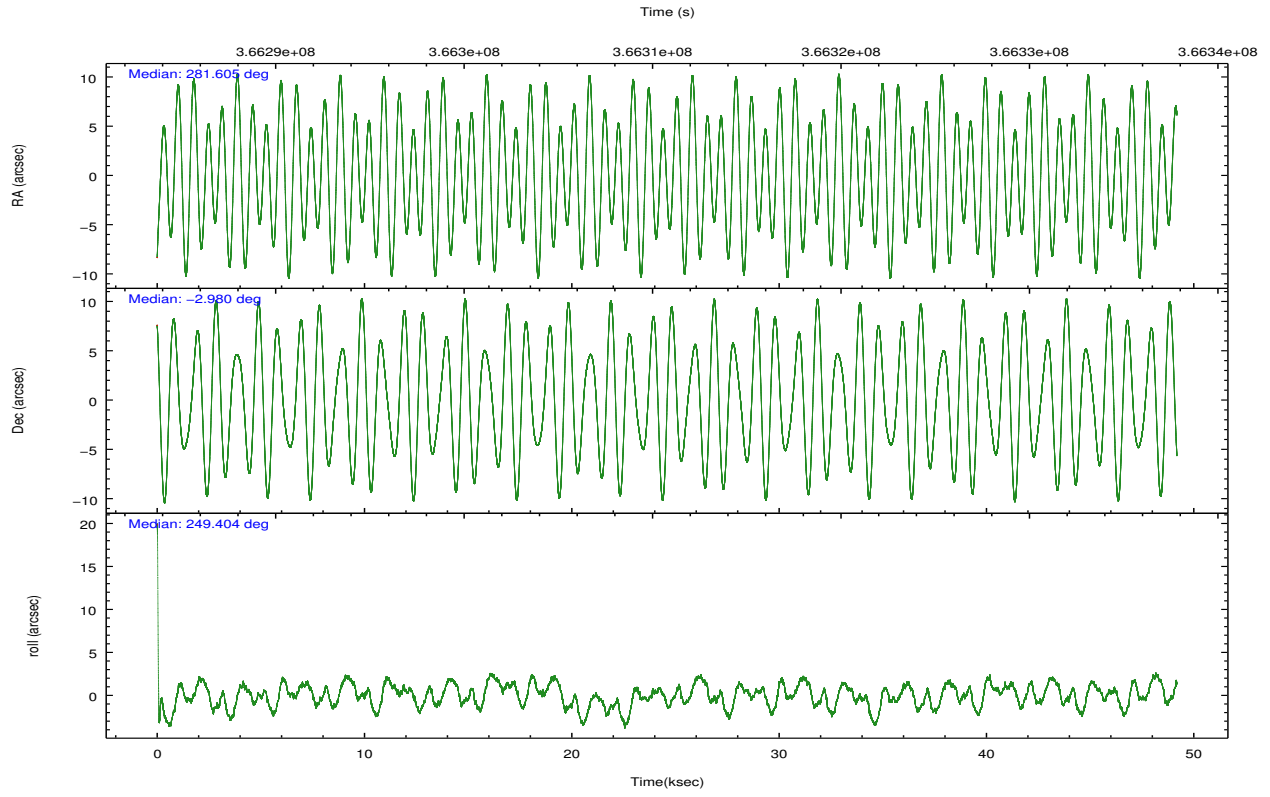
	ccd 7
grade 0 events	12785
	11%
grade 1 events	153
	0%
grade 2 events	18090
	15%
grade 3 events	9864
	8%
grade 4 events	9709
	8%
grade 5 events	7132
	6%
grade 6 events	30083
	26%
grade 7 events	25725
	22%

2.2 Compared Parameters

Parameter	Planned	Actual	Parameter	Planned	Actual
Instrument	ACIS	ACIS	Obspar format version number	7	7
Detector	ACIS-7	ACIS-7	Obspar file type	PREDICTED	ACTUAL
Grating	NONE	NONE	Obspar update status	NONE	UPDATED
Data mode	FAINT	FAINT	Number of optional ACIS chips dropped	0	0
Observation mode	POINTING	POINTING	On-chip summing requested	N	N
[deg] Pointing RA	281.599839	281.6046859529878	Subarray requested	CUSTOM	1/8
[deg] Pointing Dec	-2.952869	-2.979784527583506	Subarray start row	449	449
[deg] Pointing Roll	249.257765	249.4146535331485	Subarray row count	128	128
[mm] SIM focus pos	-0.684267	-0.6828225247311905	Alternating exposures requested	N	N
[mm] SIM defocus	0	0.001444936568705701	[s] Primary exposure time	0.000000	0.4
[mm] SIM translation stage pos	-190.132523	-190.1400660498719			
[mm] SIM translation stage offset	0	0.00754346686406393			
[s] Observation start time (MET)	366286363.184000	366285586.67493			
Observation start date	2009-08-10T10:11:37	2009-08-10T09:59:46			
[s] Observation end time (MET)	366335363.184000	366336505.60248			
Observation end date	2009-08-10T23:48:17	2009-08-11T00:08:25			
Read mode	TIMED	TIMED			

2.3 Aspect



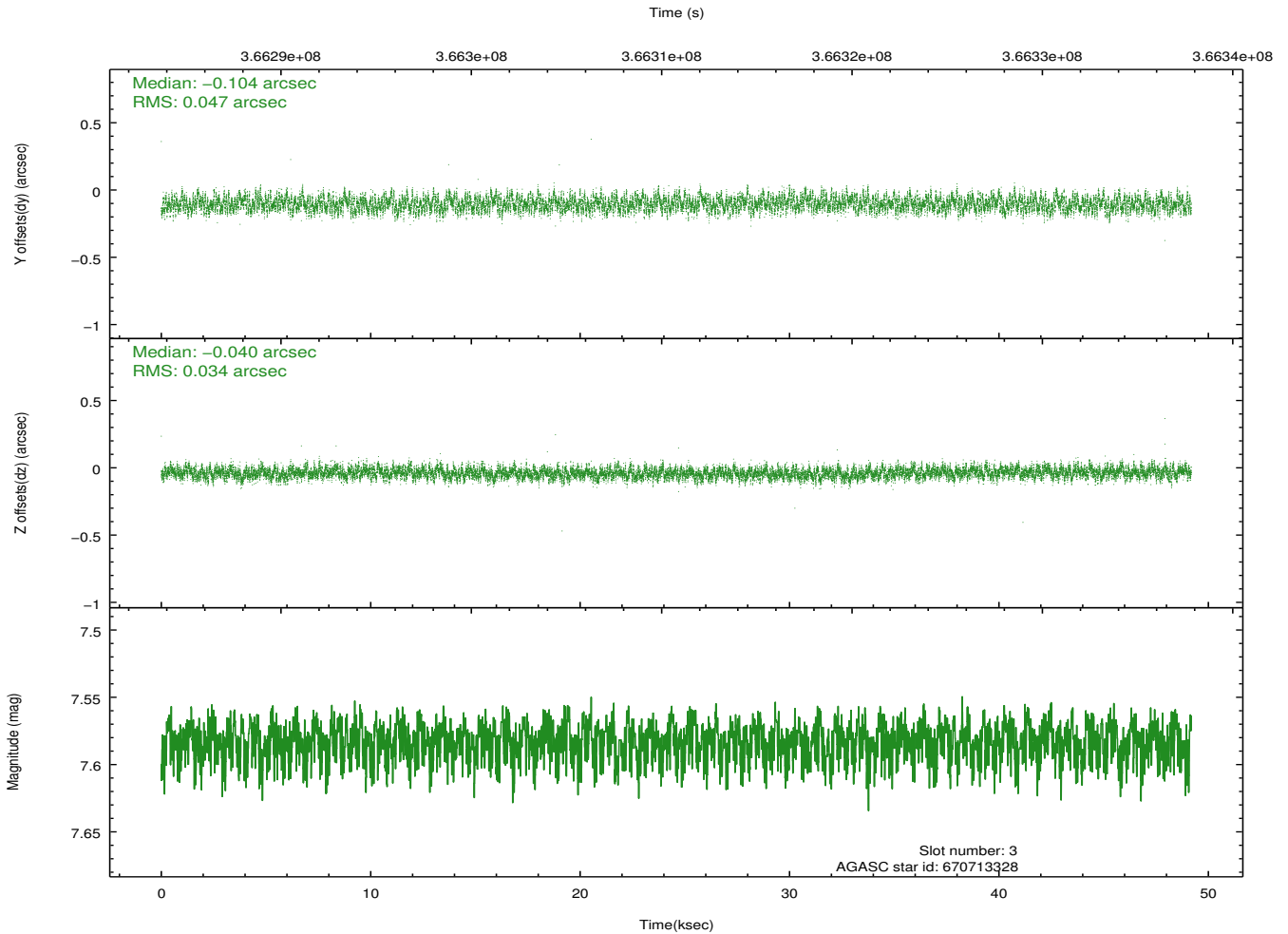
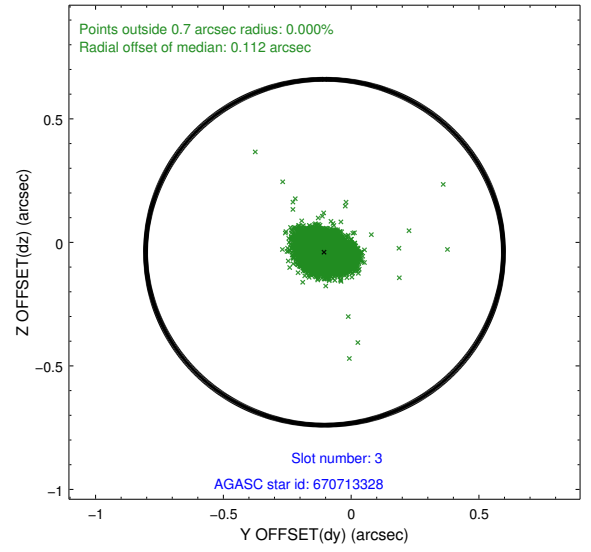
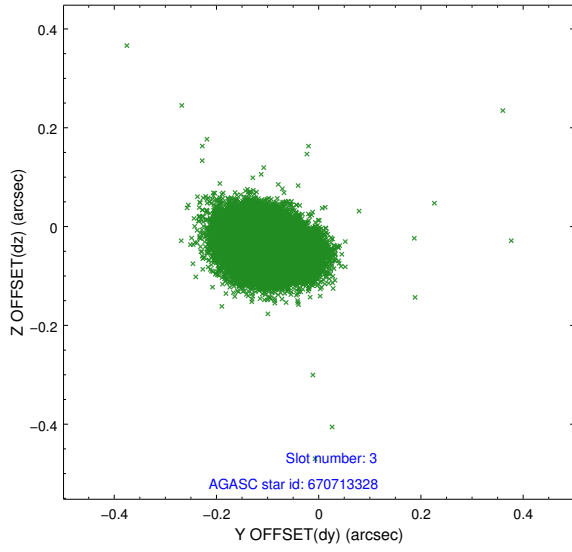


Slot Statistics

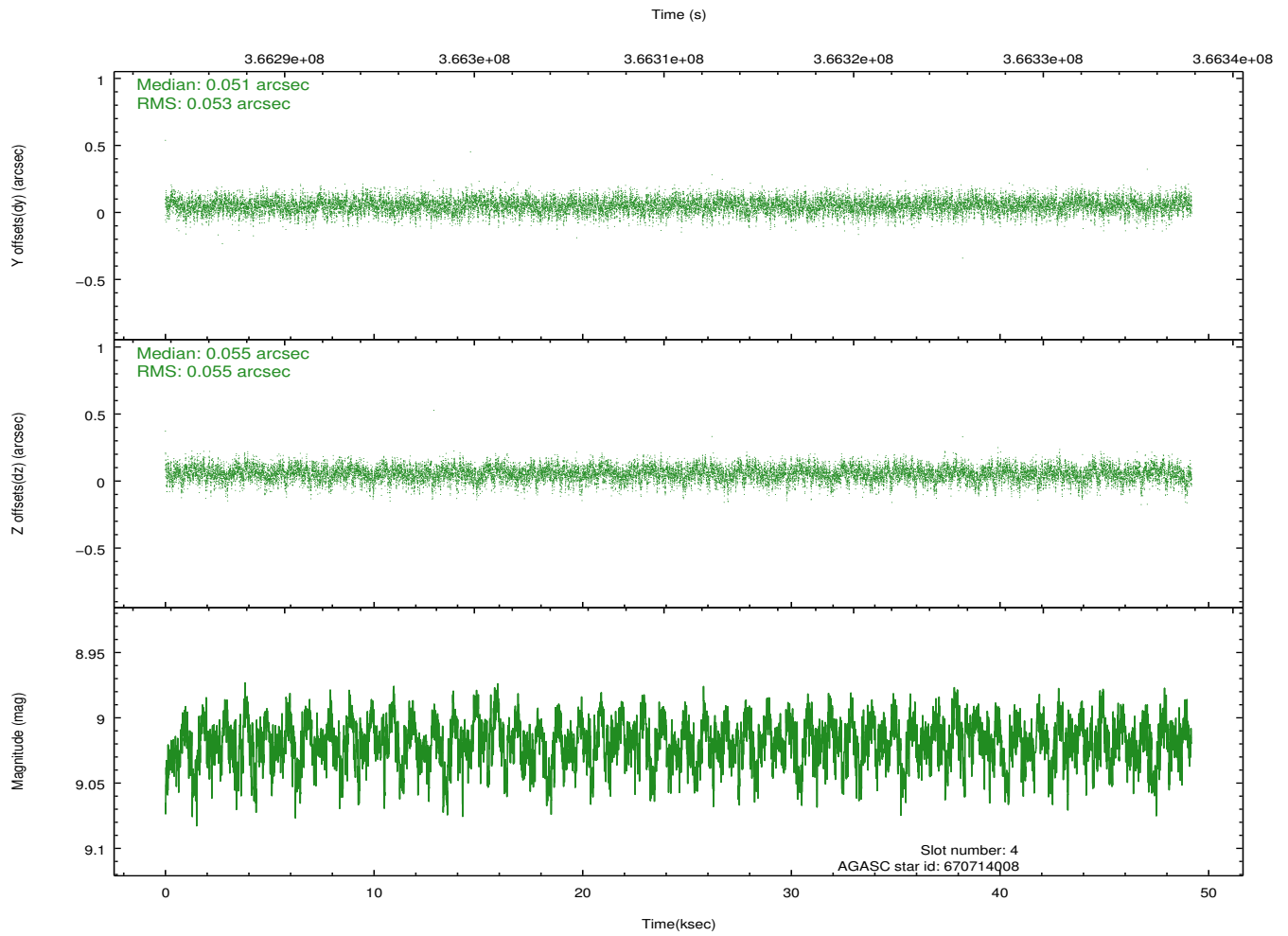
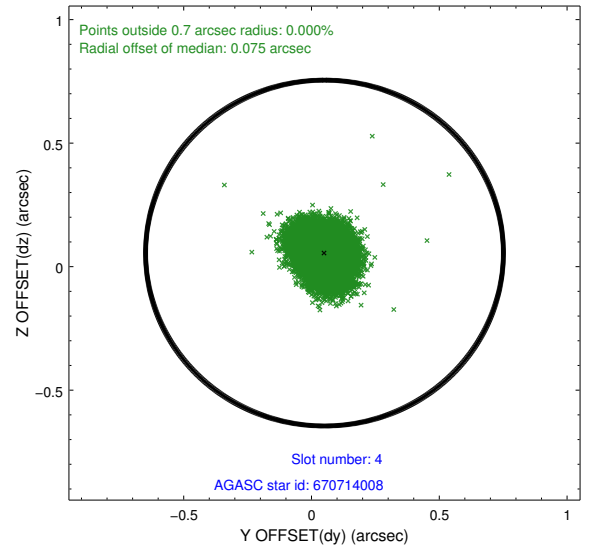
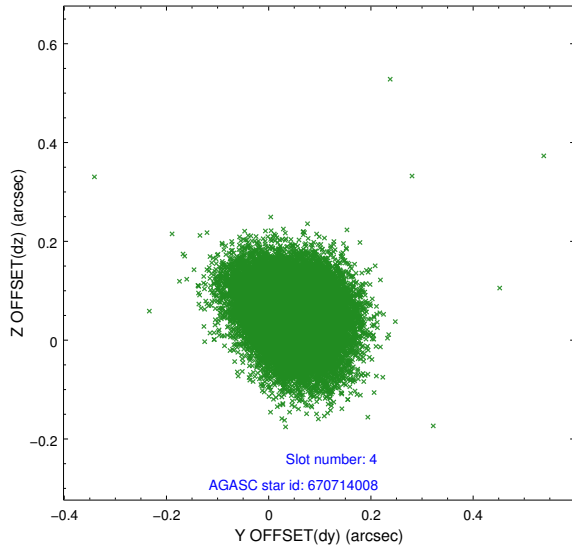
slot	status	id	mag	n_pts	med_dy	med_dz	dr1	dr2	ra	dec	mean_y	mean_z
0	FID	ACIS-S-2	6.92	11998	-0.084	-0.024	0.008	0.014	0.000000	0.000000	-767.75	-1736.16
1	FID	ACIS-S-4	7.01	11998	0.191	0.047	0.006	0.011	0.000000	0.000000	2145.80	172.43
2	FID	ACIS-S-5	7.03	11998	-0.139	-0.014	0.007	0.012	0.000000	0.000000	-1820.68	165.99
3	GUIDE	670713328	7.58	23991	-0.104	-0.040	0.062	0.098	280.824681	-3.187771	1779.07	-2305.74
4	GUIDE	670714008	9.02	23971	0.051	0.055	0.081	0.133	281.129237	-3.153193	1274.60	-1326.23
5	GUIDE	670829600	8.63	23976	-0.001	-0.060	0.073	0.119	282.227270	-3.031765	-532.64	2210.03
6	GUIDE	670830024	8.33	23981	-0.045	-0.053	0.069	0.109	281.863539	-3.639841	1980.32	1762.16
7	GUIDE	670830264	8.75	23968	0.099	0.100	0.074	0.119	281.361536	-3.231556	1242.30	-445.24

2.4 Star Slots

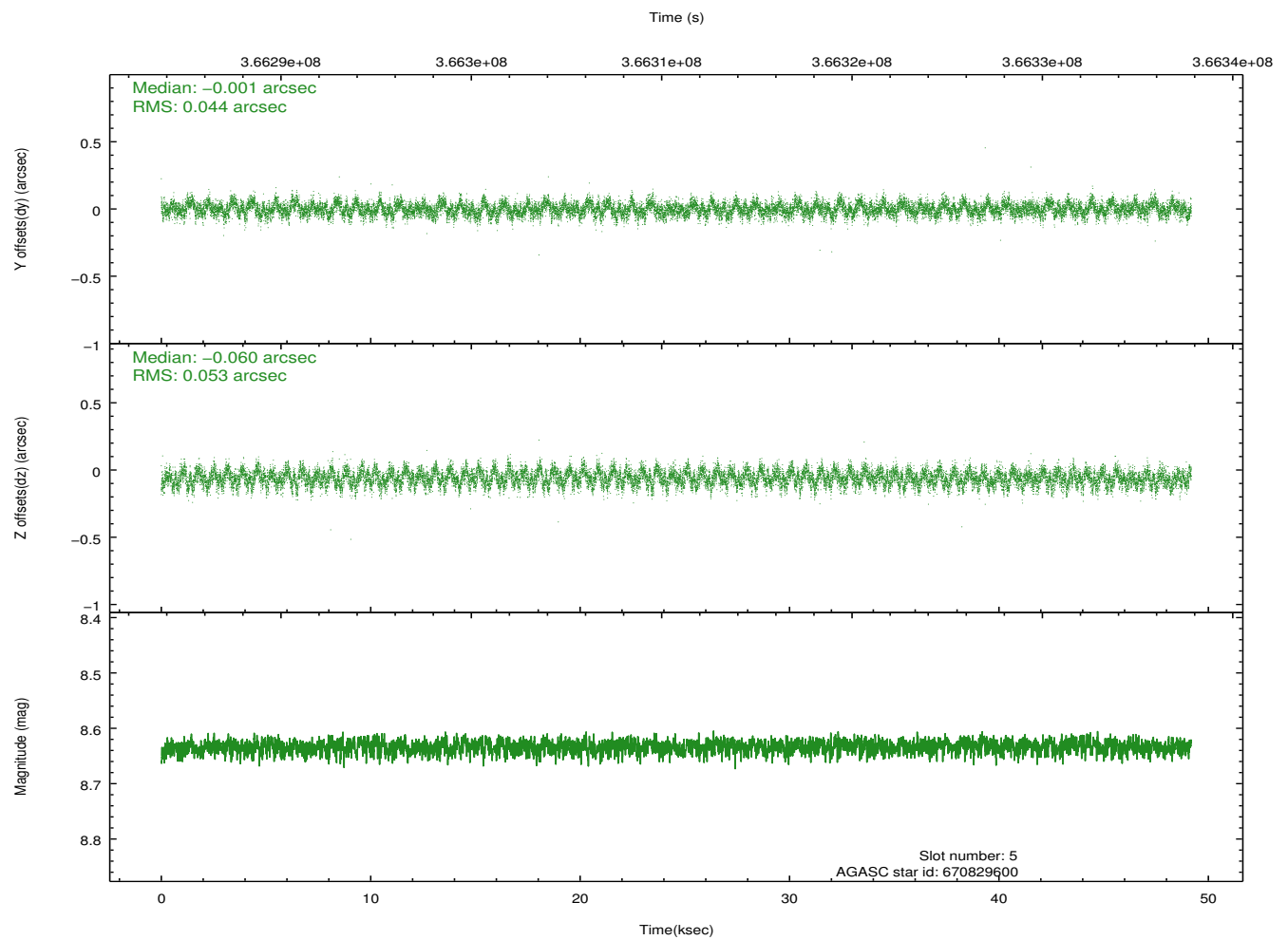
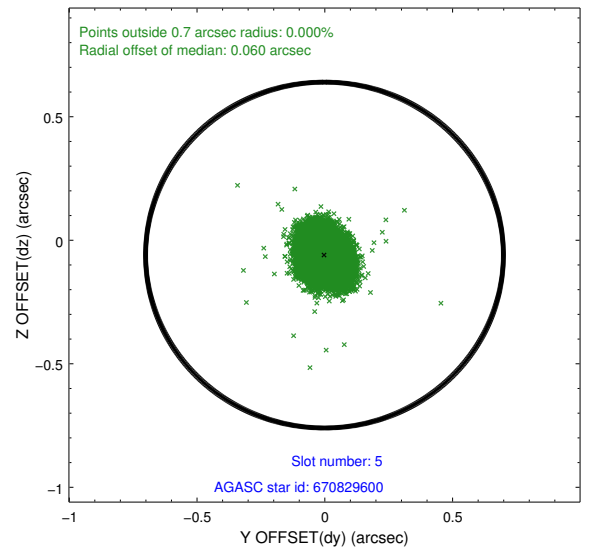
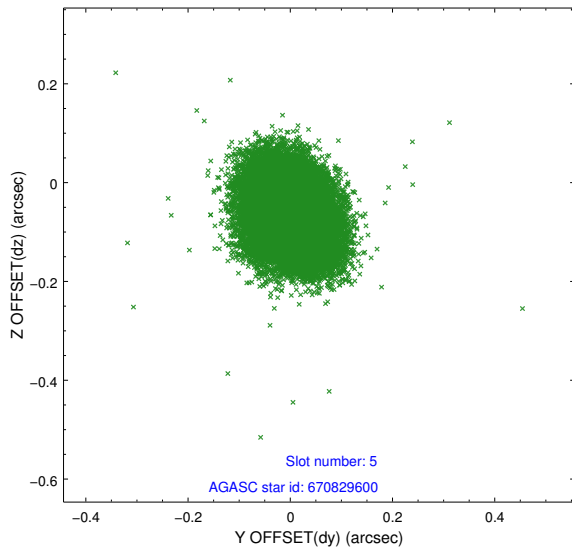
2.4.1 Slot 3



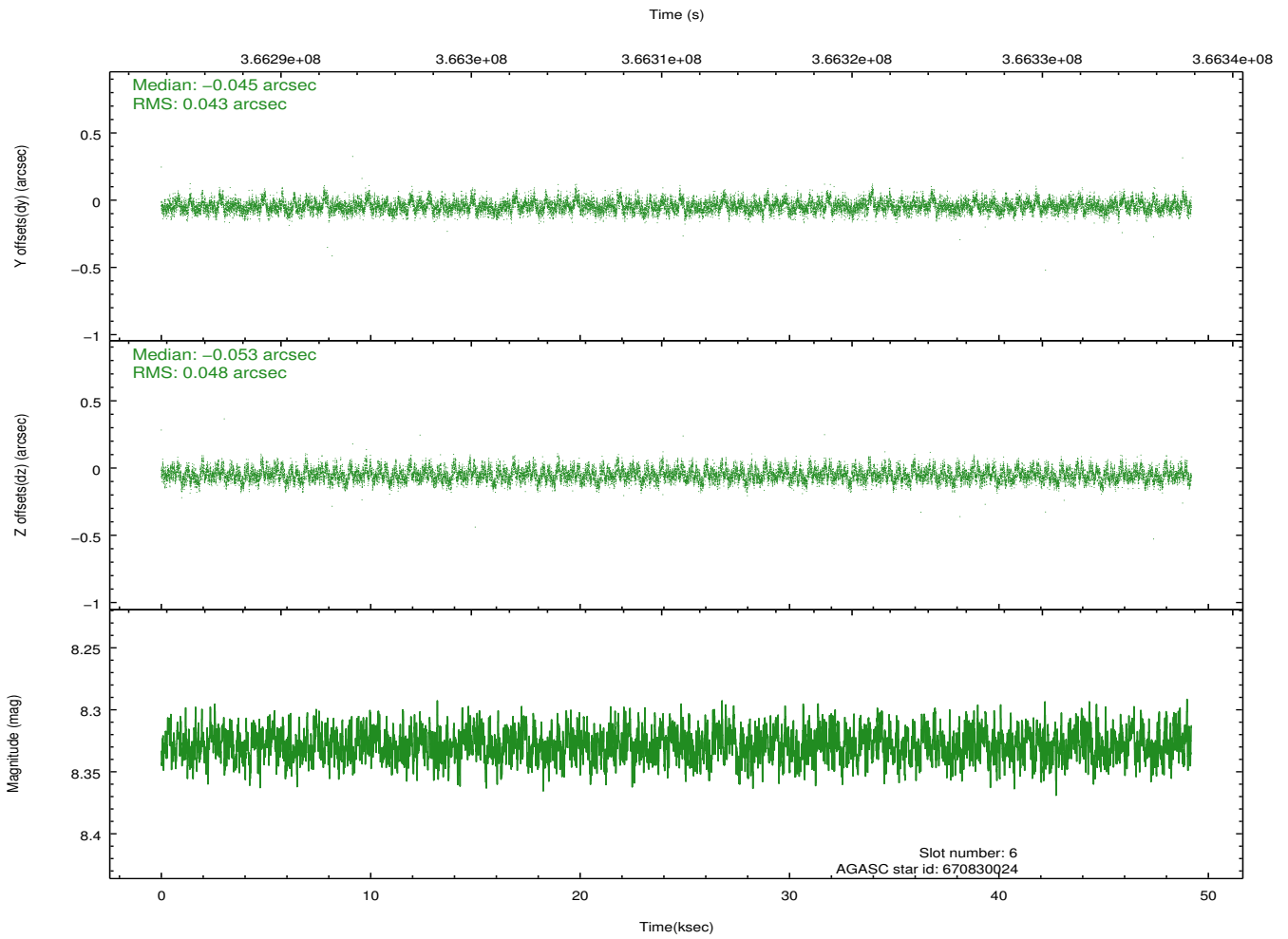
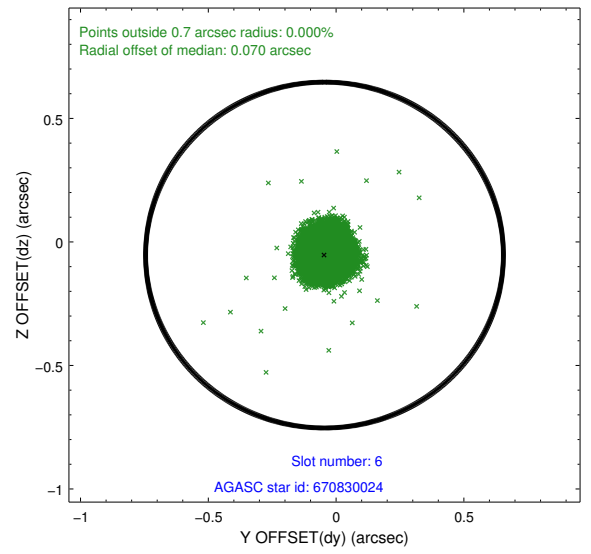
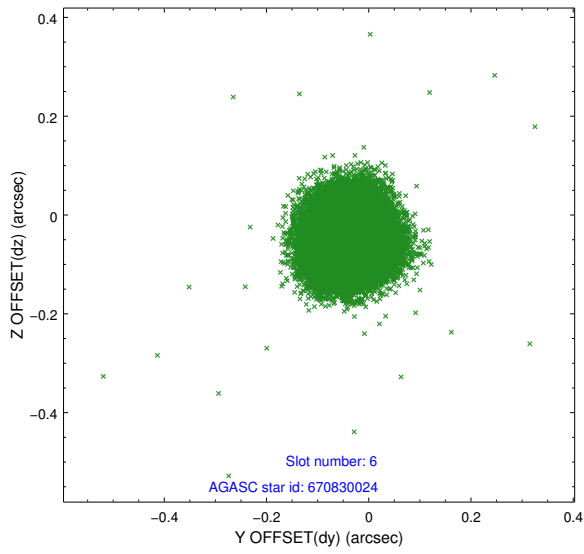
2.4.2 Slot 4



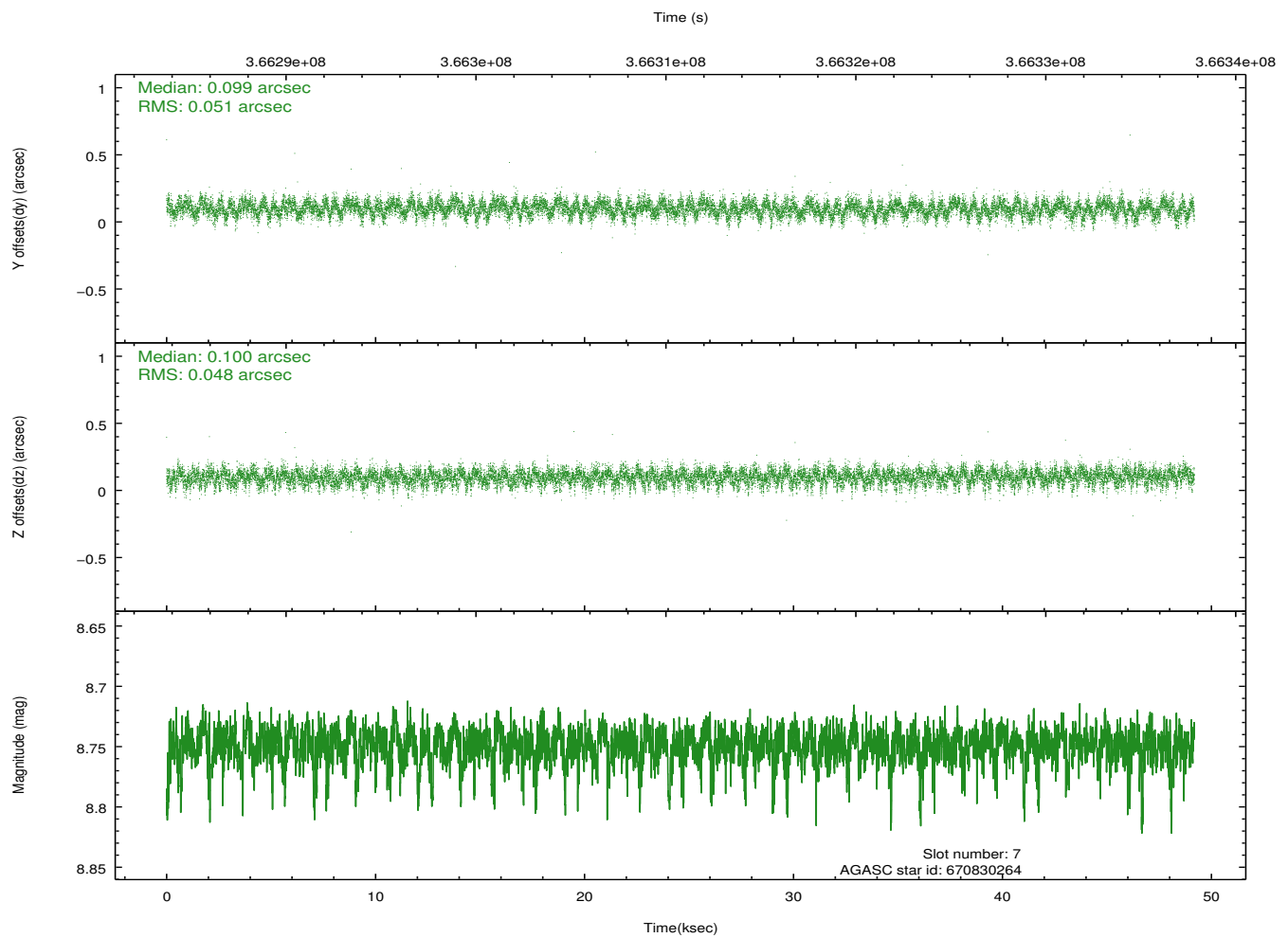
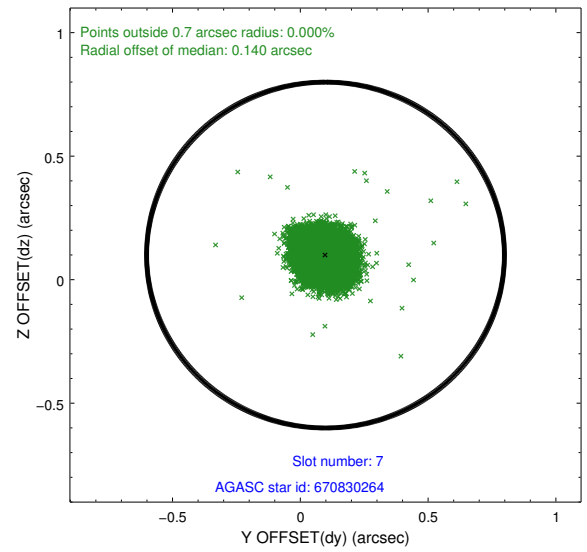
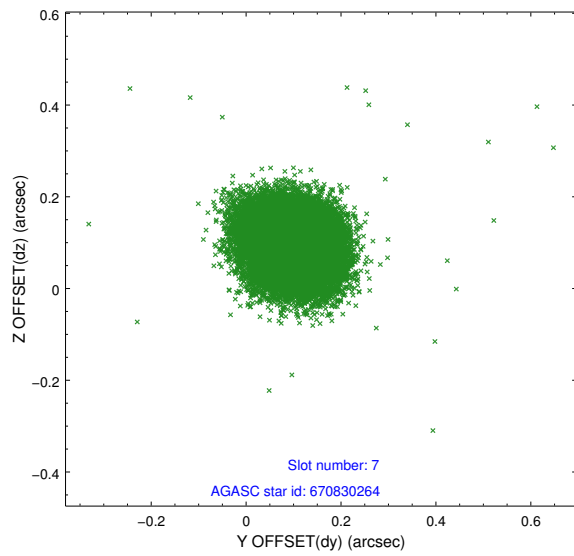
2.4.3 Slot 5



2.4.4 Slot 6

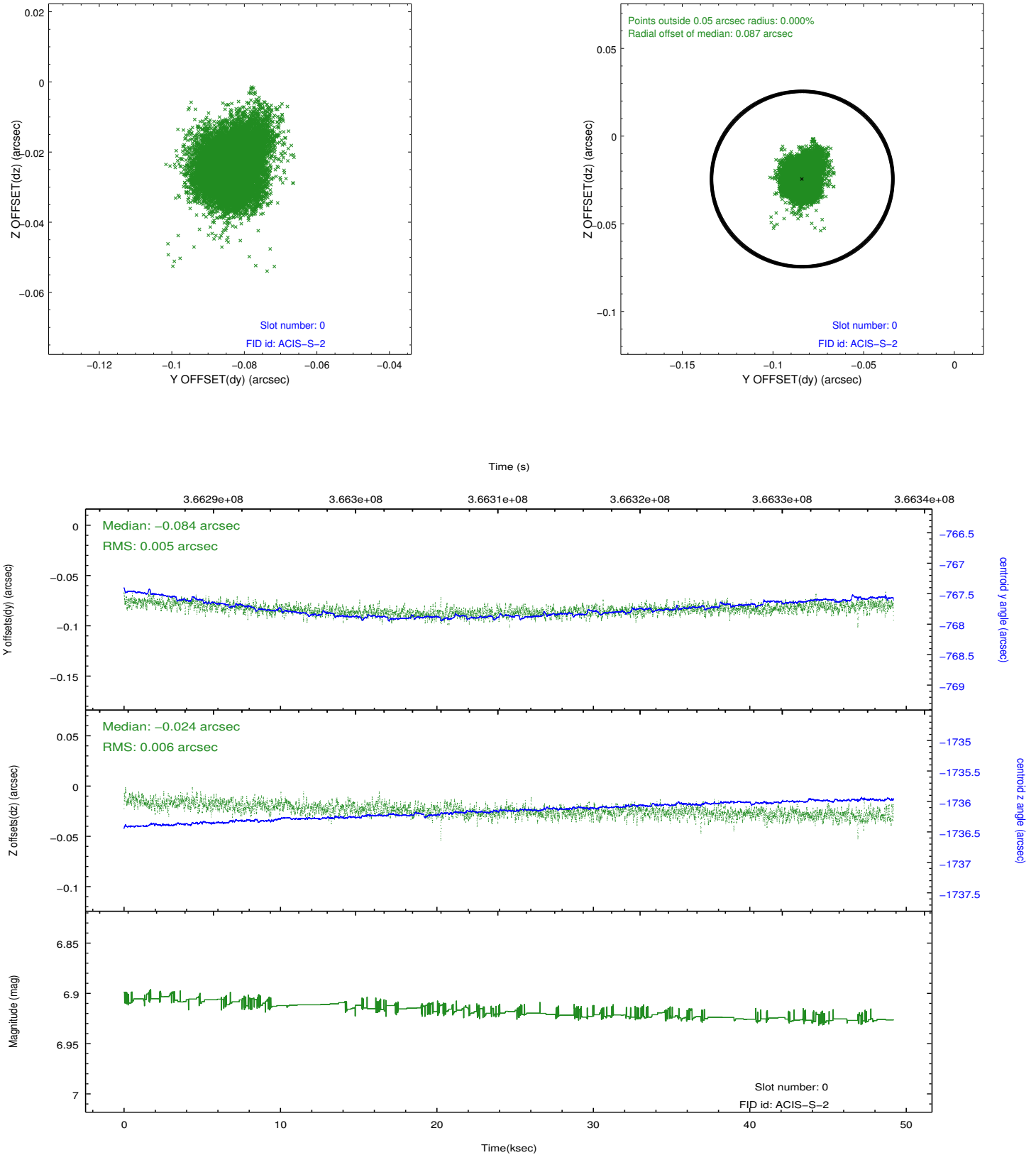


2.4.5 Slot 7

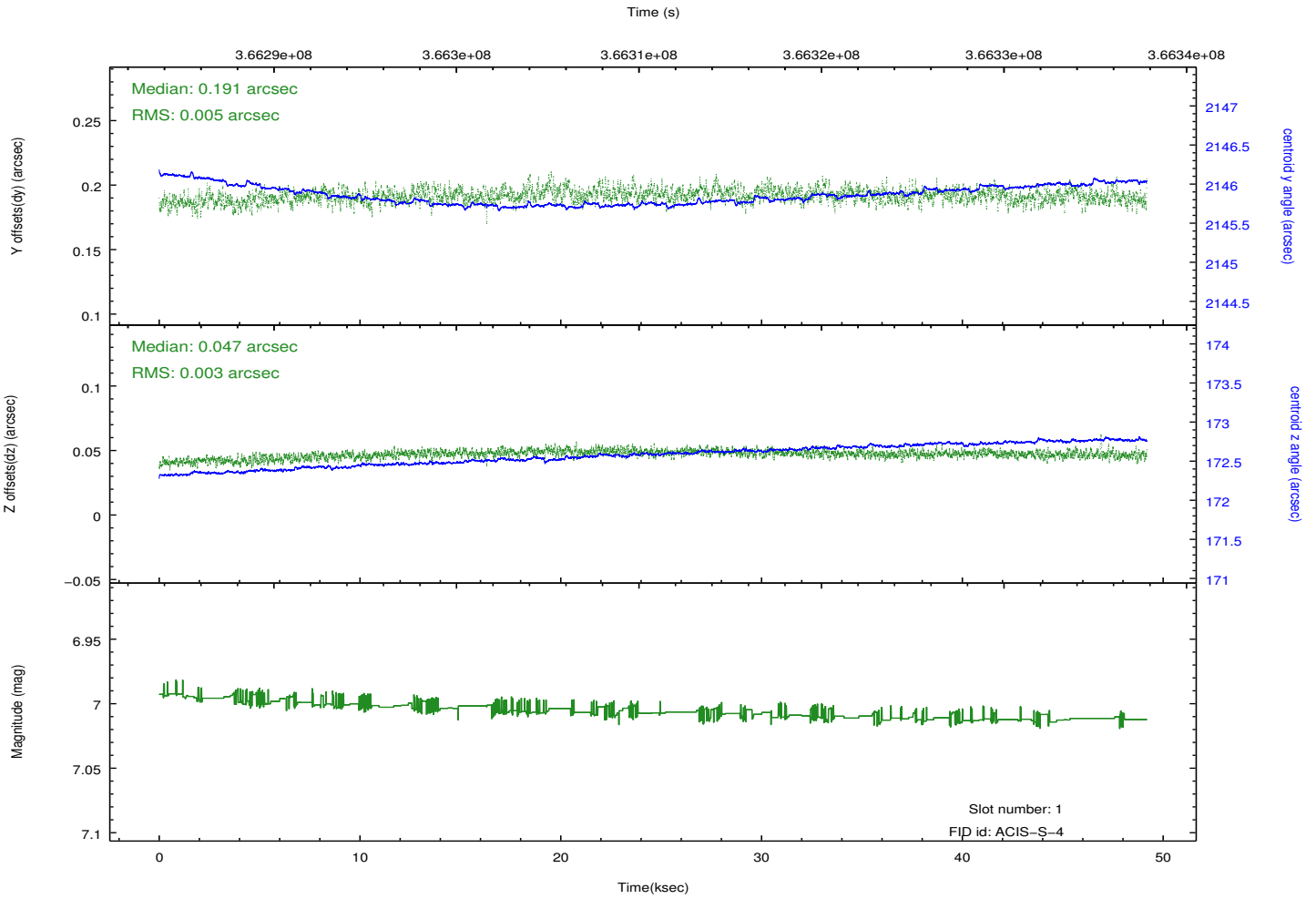
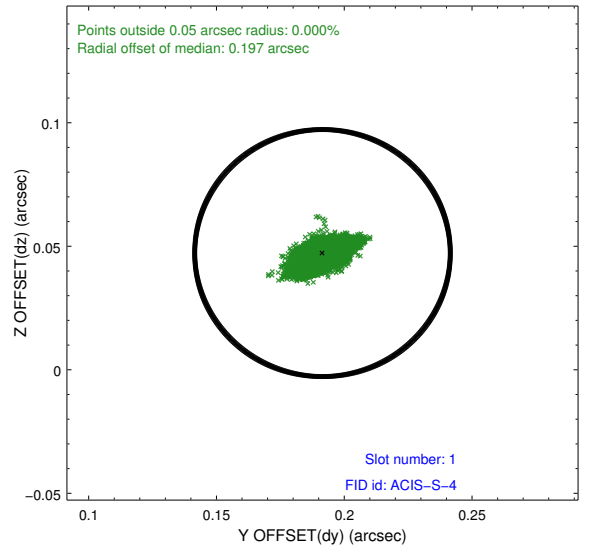
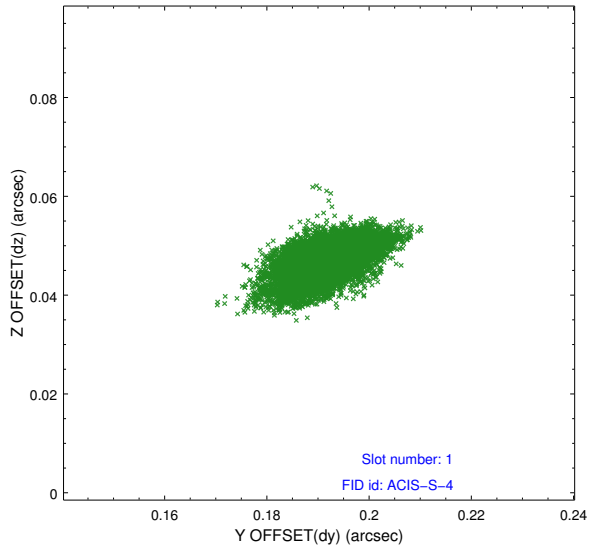


2.5 FID Slots

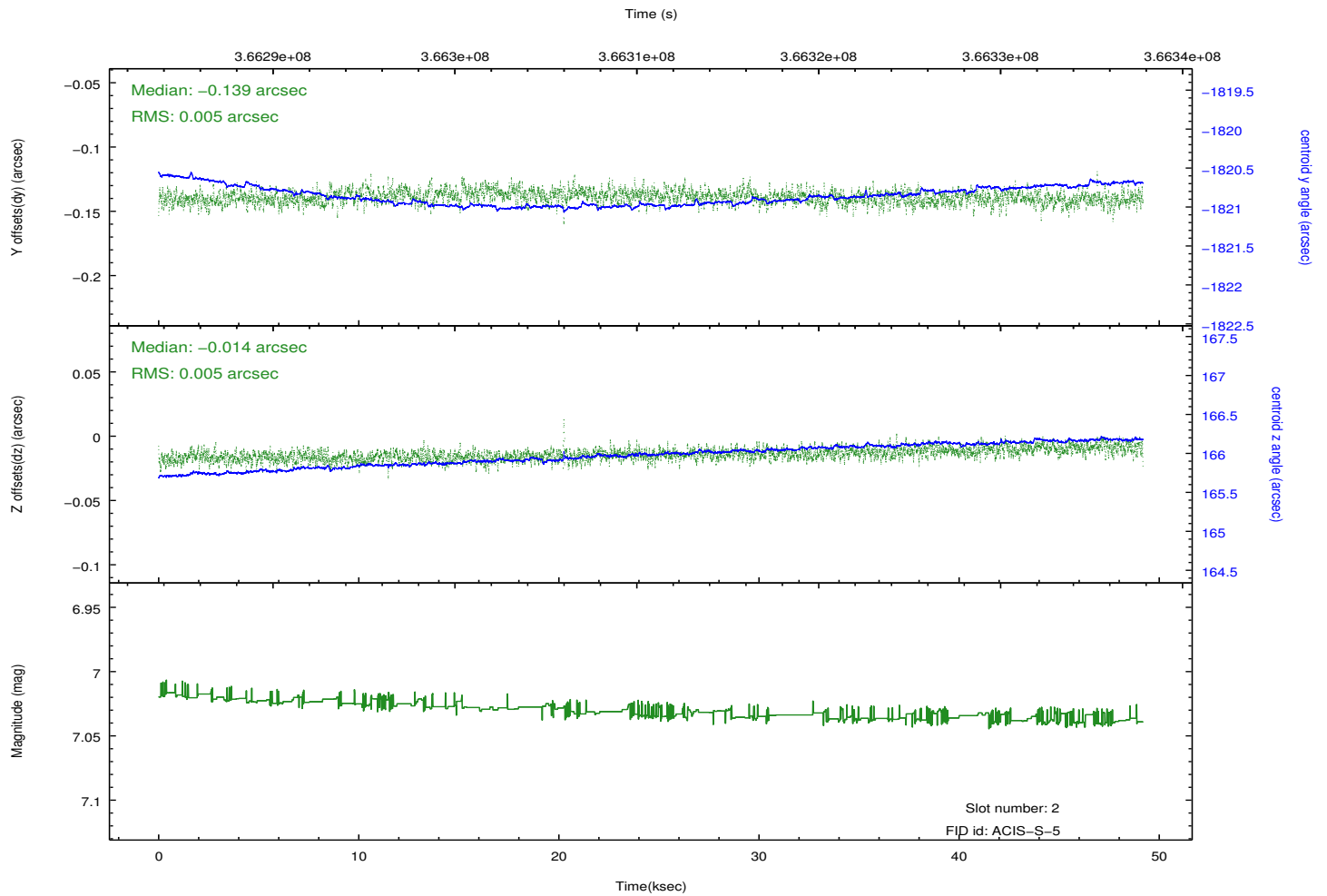
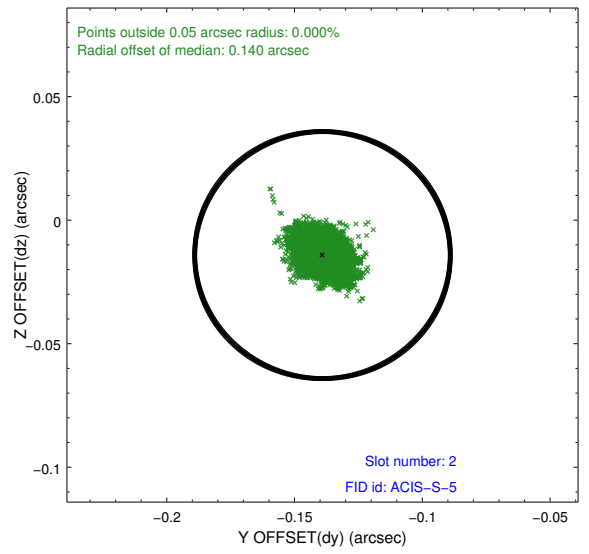
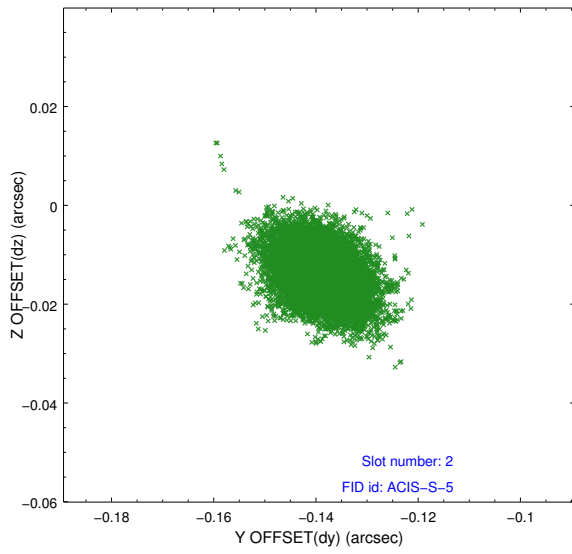
2.5.1 Slot 0



2.5.2 Slot 1



2.5.3 Slot 2



A Summary

A.1 Status

V&V Scientist	Jen Lauer
V&V Date (YYYY-MM-DD)	2012.06.14
V&V Edition	1
V&V Disposition and Status	OK
V&V Charge Time	49.186797068238

A.2 Comments