

V&V Reference Report

L2 ASCDS Version : 8.4.5

Observation 11018 - L2 Version 2
Chandra X-Ray Center

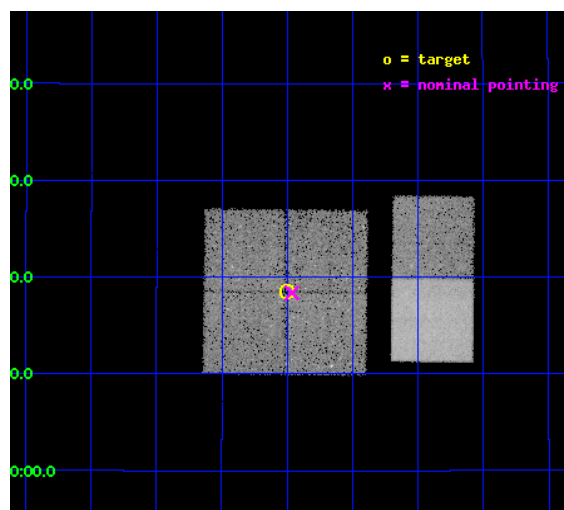
L2 Processing Date : Jun 17 2012

Contents

1	Front	2
2	OBI	3
2.1	OBI	3
2.1.1	Images	3
2.1.2	Bias	3
2.1.3	Parameters	4
2.1.4	Events	4
2.2	Compared Parameters	5
2.3	Aspect	6
2.4	Star Slots	9
2.4.1	Slot 3	9
2.4.2	Slot 4	10
2.4.3	Slot 5	11
2.4.4	Slot 6	12
2.4.5	Slot 7	13
2.5	FID Slots	14
2.5.1	Slot 0	14
2.5.2	Slot 1	15
2.5.3	Slot 2	16
A	Summary	17
A.1	Status	17
A.2	Comments	17

1 Front

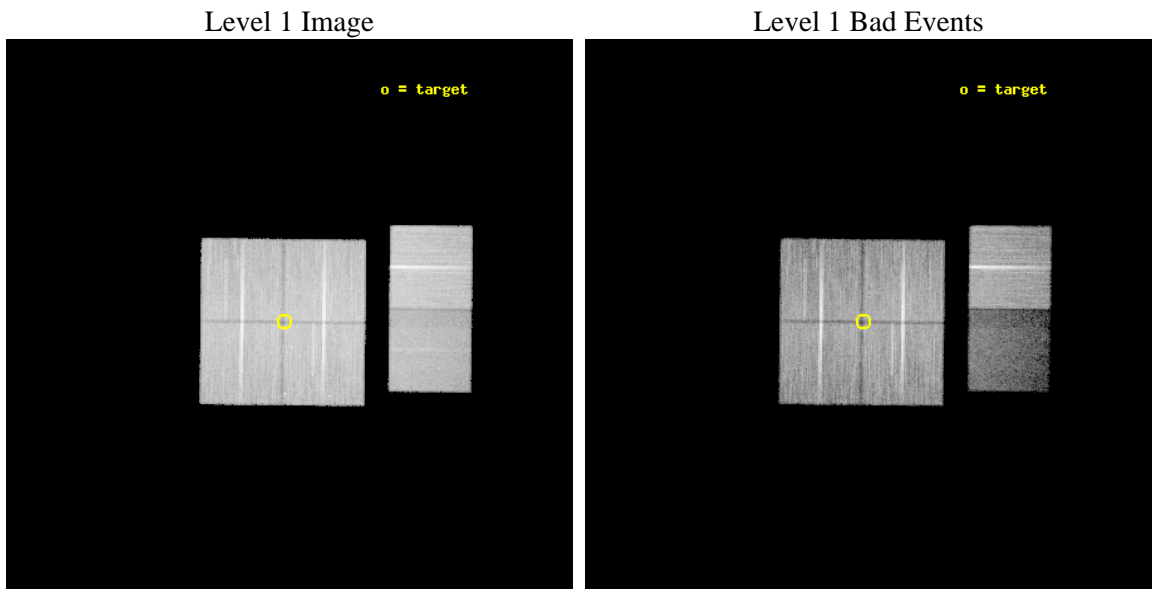
seq_num	200647	Sequence number
obs_id	11018	Observation id
title	Rethinking the rotation-activity classifications of cool single and binary stars	Proposal title
observer	Dr. Soren Meibom	Principal investigator
object	M35	Source name
dtycycle	0	
cycle	P	events from which exps? Prim/Second/Both
ra_targ	92.375	Observer's specified target RA [deg]
dec_targ	24.30875	Observer's specified target Dec [deg]
ra_nom	92.365942273757	Nominal RA [deg]
dec_nom	24.306369283445	Nominal Dec [deg]
roll_nom	90.662426587833	Nominal Roll [deg]
revision	2	Processing version of data
ontime	27951.363591611	Sum of GTIs [s]
livetime	27597.426595524	Livetime [s]
ontime0	27951.322551608	Sum of GTIs [s]
ontime1	27951.363591611	Sum of GTIs [s]
ontime2	27944.922571123	Sum of GTIs [s]
ontime3	27948.20466131	Sum of GTIs [s]
ontime6	27945.045700669	Sum of GTIs [s]
ontime7	27951.486711621	Sum of GTIs [s]
l2events	142026	Number of level 2 events



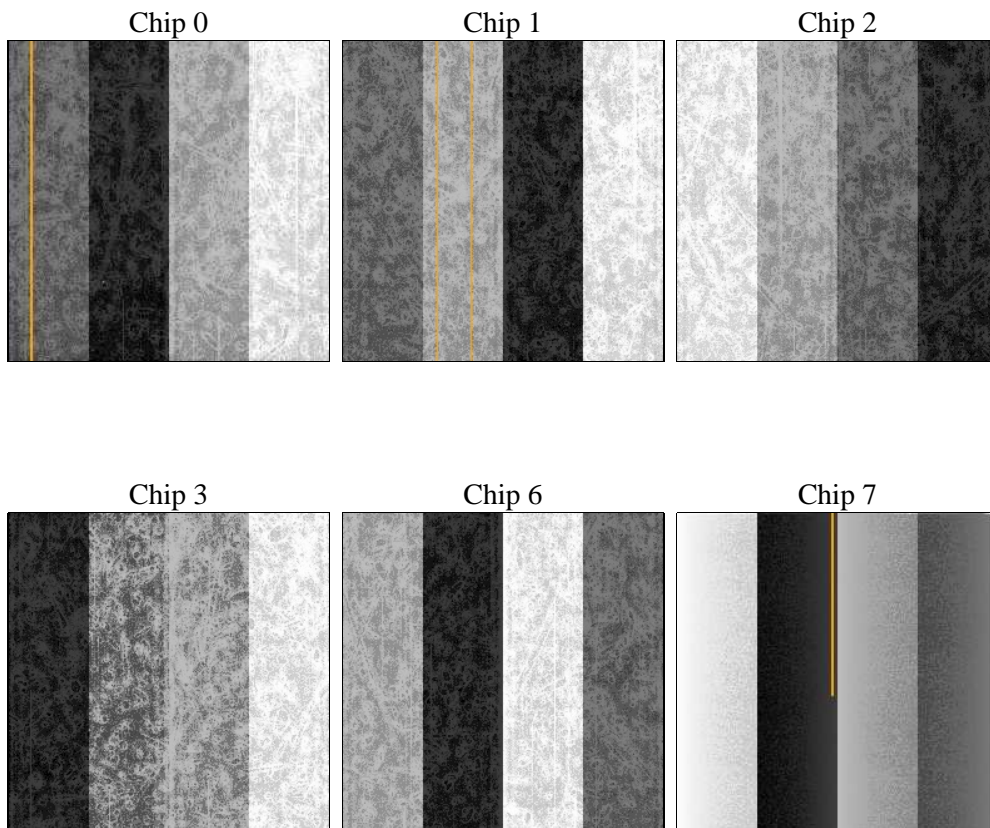
2 OBI

2.1 OBI

2.1.1 Images



2.1.2 Bias



2.1.3 Parameters

obi_num	1	Obi number	sched_exp_time	28000.000000	[s] Scheduled observation exposure time
ascdsver	8.4.5	Processing system revision	ontime	27951.363591611	Sum of GTIs [s]
caldsver	4.4.10	 	ontime0	27951.322551608	Sum of GTIs [s]
date	2012-06-17T06:56:20	Date and time of file creation	ontime1	27951.363591611	Sum of GTIs [s]
revision	2	Processing version of data	ontime2	27944.922571123	Sum of GTIs [s]
			ontime3	27948.20466131	Sum of GTIs [s]
			ontime6	27945.045700669	Sum of GTIs [s]
			ontime7	27951.486711621	Sum of GTIs [s]
			l1events	1116694	Number of level 1 events

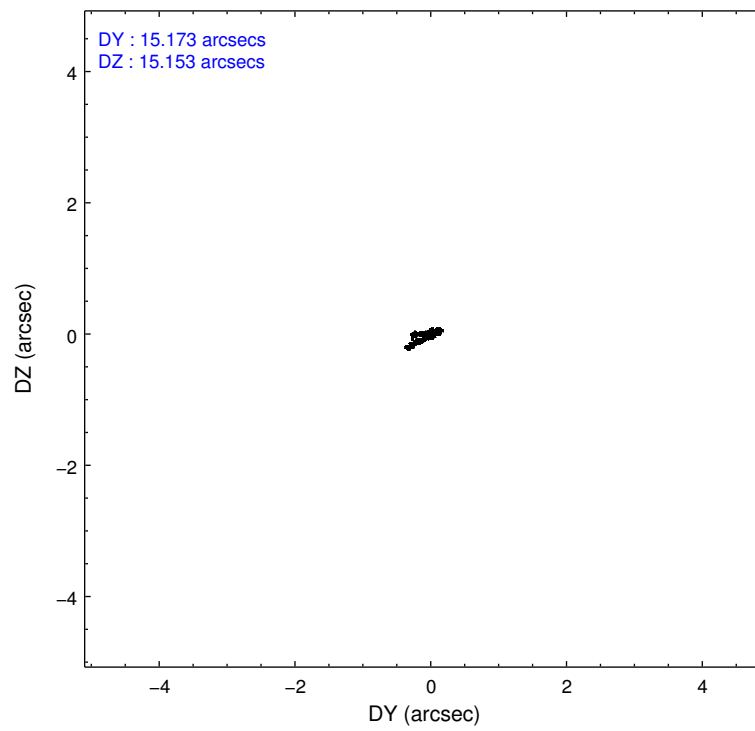
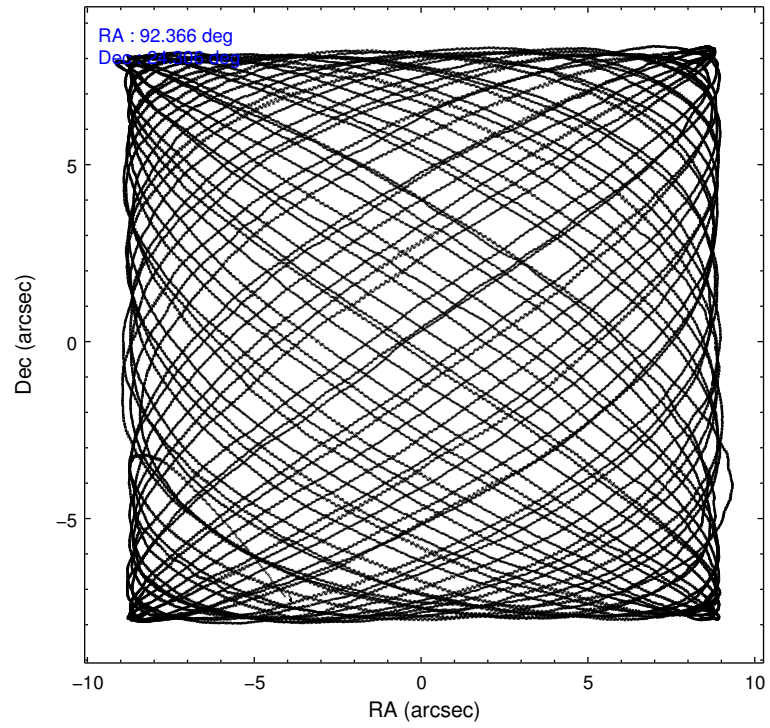
2.1.4 Events

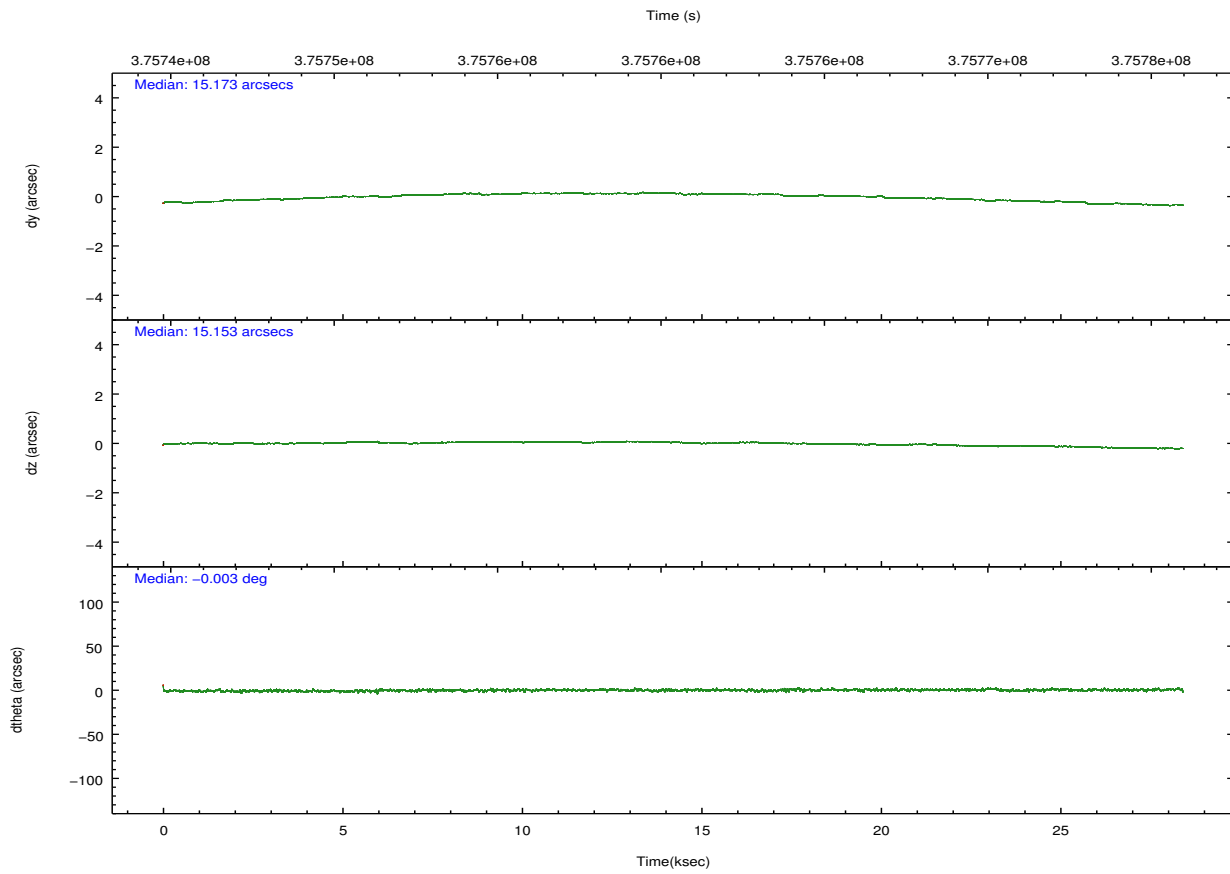
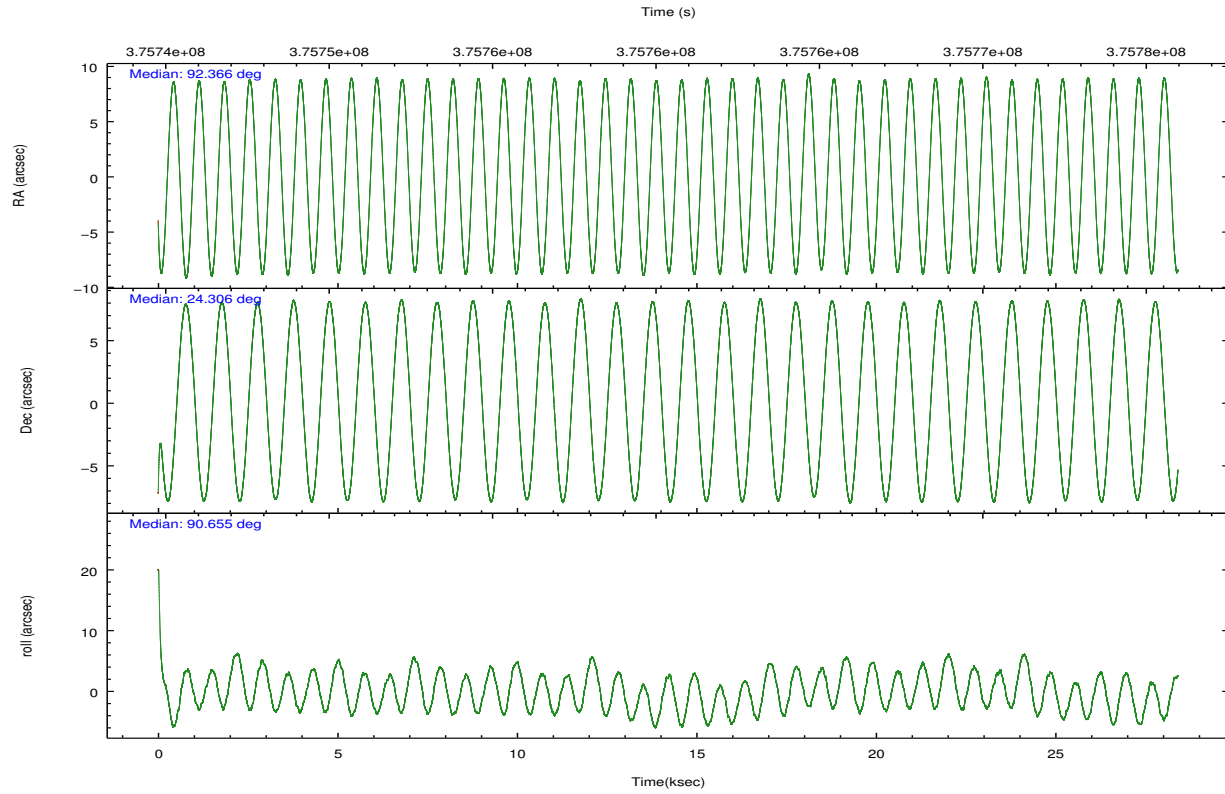
	ccd 0	ccd 1	ccd 2	ccd 3	ccd 6	ccd 7		ccd 0	ccd 1	ccd 2	ccd 3	ccd 6	ccd 7
level 1 events	185951	185147	212872	201437	209425	121862	grade 0 events	7634	7307	8041	8230	7983	9300
rejected events	167220	166465	194271	182941	190289	51784		4%	3%	3%	4%	3%	7%
rejected %	89%	89%	91%	90%	90%	42%	grade 1 events	113	115	124	117	94	342
								0%	0%	0%	0%	0%	0%
							grade 2 events	4577	4061	4396	3796	4292	17414
								2%	2%	2%	1%	2%	14%
							grade 3 events	1915	2137	1775	1884	1985	7194
								1%	1%	0%	0%	0%	5%
							grade 4 events	1882	2120	1892	1900	1913	6942
								1%	1%	0%	0%	0%	5%
							grade 5 events	3508	4060	3134	4114	4196	12553
								1%	2%	1%	2%	2%	10%
							grade 6 events	2724	3058	2500	2690	2965	29237
								1%	1%	1%	1%	1%	23%
							grade 7 events	163598	162289	191010	178706	185997	38880
								87%	87%	89%	88%	88%	31%

2.2 Compared Parameters

Parameter	Planned	Actual	Parameter	Planned	Actual
Instrument	ACIS	ACIS	Obspar format version number	7	7
Detector	ACIS-012367	ACIS-012367	Obspar file type	PREDICTED	ACTUAL
Grating	NONE	NONE	Obspar update status	NONE	UPDATED
Data mode	VFAINT	VFAINT	Number of optional ACIS chips dropped	0	0
Observation mode	POINTING	POINTING	On-chip summing requested	N	N
[deg] Pointing RA	92.381437	92.36594227375721	Subarray requested	NONE	NONE
[deg] Pointing Dec	24.282801	24.30636928344492	Alternating exposures requested	N	N
[deg] Pointing Roll	90.447359	90.66242658783267	[s] Primary exposure time	0.000000	3.2
[mm] SIM focus pos	-0.782348	-0.7809083437167272			
[mm] SIM defocus	0	0.001439871863259334			
[mm] SIM translation stage pos	-233.592463	-233.5874344608287			
[mm] SIM translation stage offset	0	-0.005018542100998502			
[s] Observation start time (MET)	375746575.184000	375745495.62545			
Observation start date	2009-11-27T22:01:49	2009-11-27T21:44:55			
[s] Observation end time (MET)	375774575.184000	375775499.93947			
Observation end date	2009-11-28T05:48:29	2009-11-28T06:04:59			
Read mode	TIMED	TIMED			

2.3 Aspect



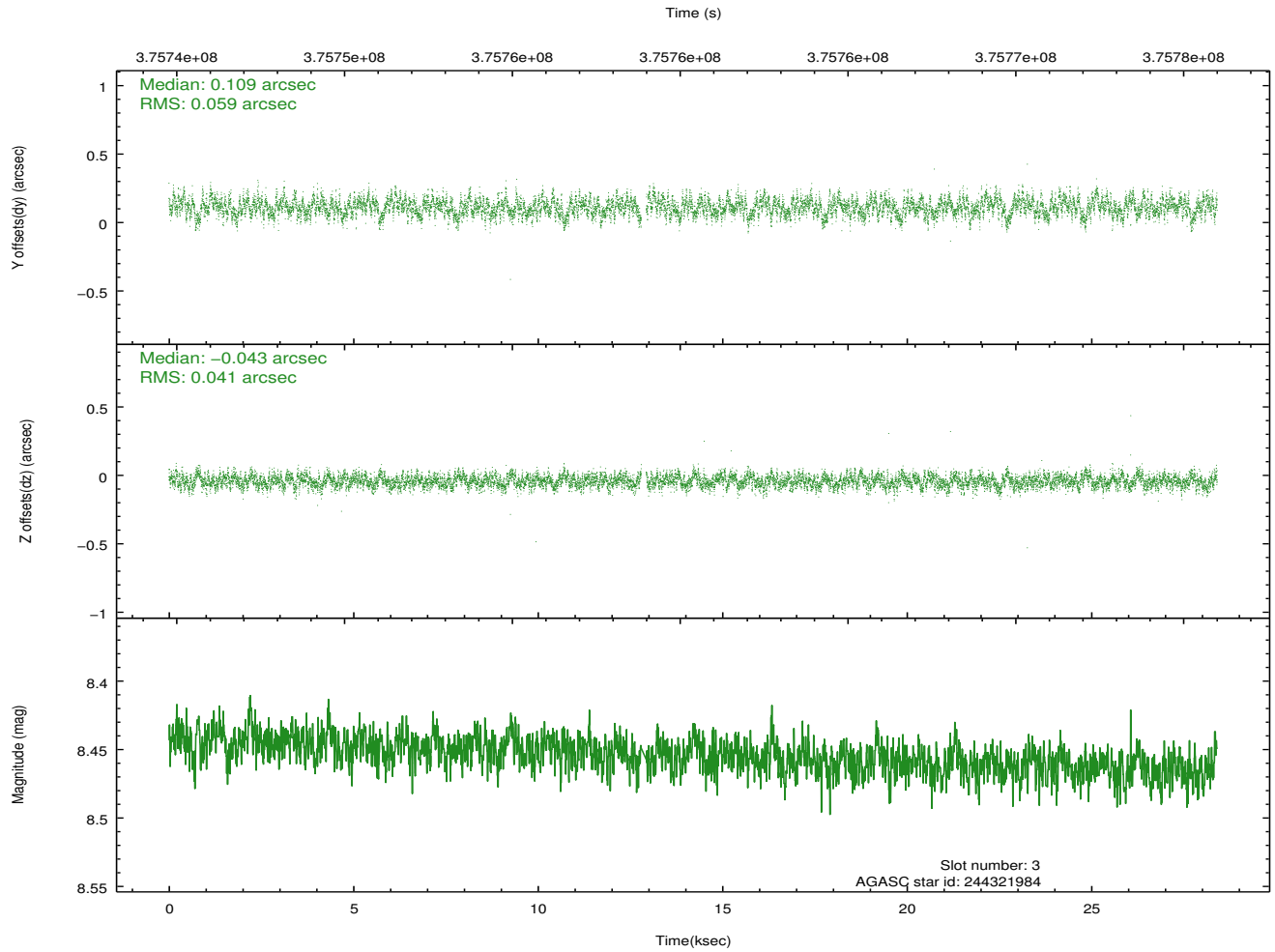
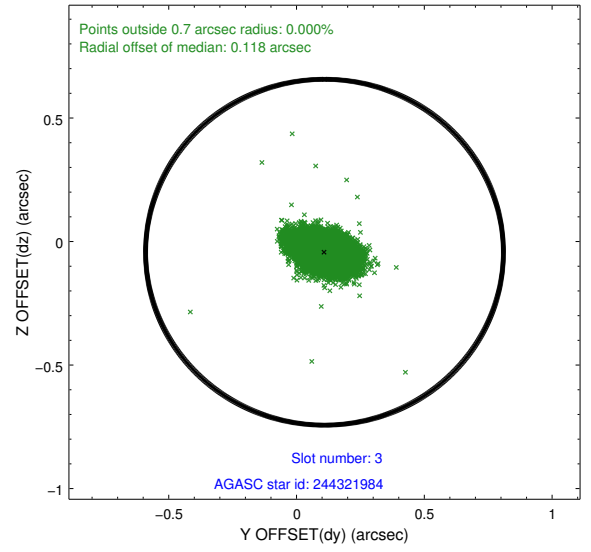
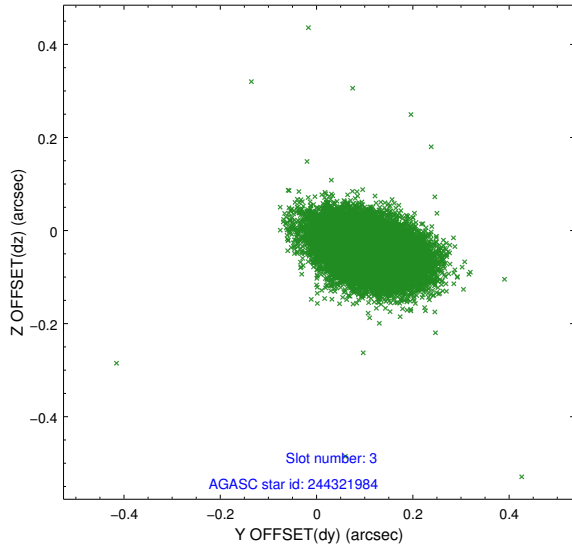


Slot Statistics

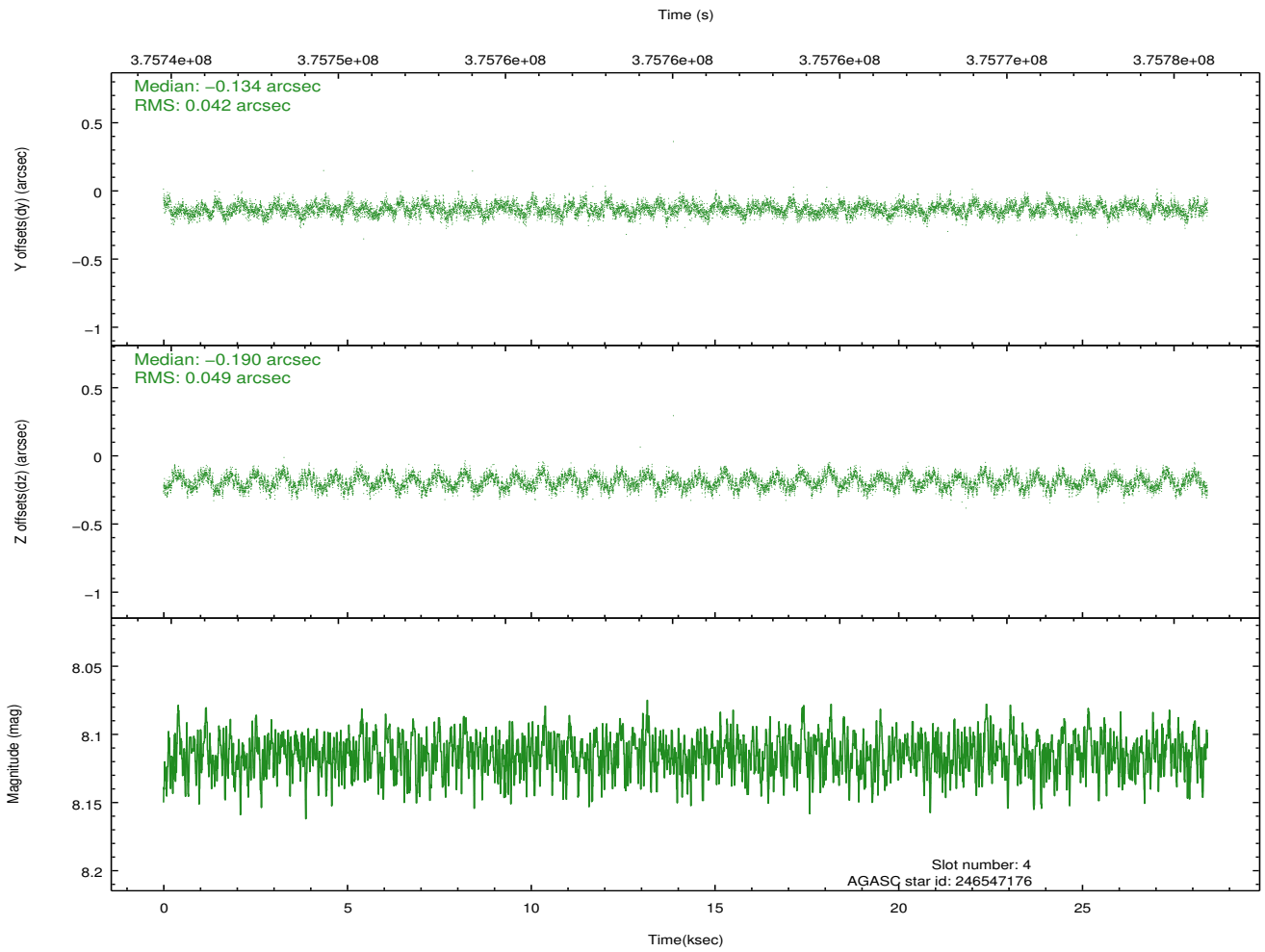
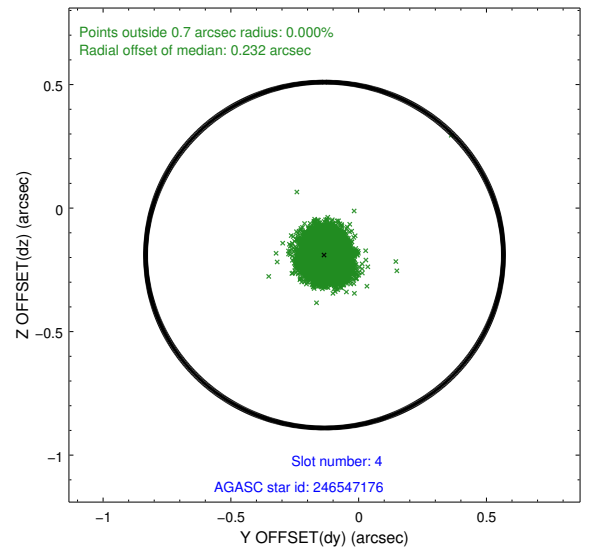
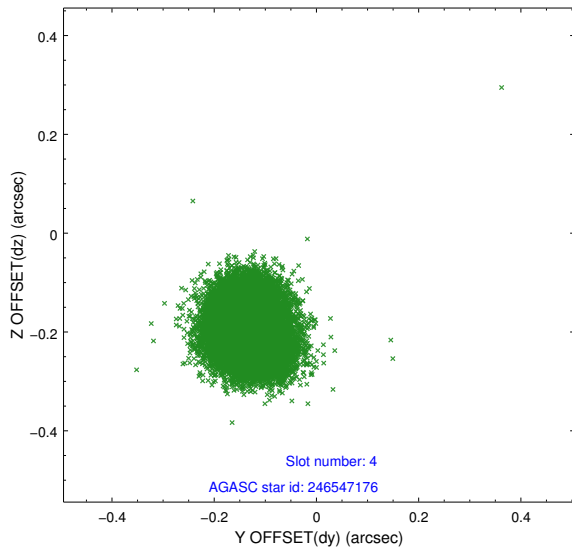
slot	status	id	mag	n_pts	med_dy	med_dz	dr1	dr2	ra	dec	mean_y	mean_z
0	FID	ACIS-I-1	7.06	6930	-0.037	0.029	0.011	0.021	0.000000	0.000000	924.30	-838.69
1	FID	ACIS-I-2	6.97	6930	-0.143	-0.058	0.010	0.016	0.000000	0.000000	-769.85	-845.28
2	FID	ACIS-I-4	6.98	6928	0.082	0.096	0.008	0.014	0.000000	0.000000	2144.24	1061.15
3	GUIDE	244321984	8.45	13785	0.109	-0.043	0.075	0.124	92.020167	23.738037	-1949.93	1205.73
4	GUIDE	246547176	8.11	13851	-0.134	-0.190	0.070	0.108	92.211593	24.500679	789.04	550.36
5	GUIDE	246556344	8.64	13850	-0.157	0.217	0.078	0.127	93.038201	24.709750	1525.87	-2159.32
6	GUIDE	244321104	8.70	13845	0.088	0.012	0.077	0.127	92.046020	23.861083	-1507.79	1115.93
7	GUIDE	246554264	8.78	13845	0.102	0.006	0.105	0.178	93.129703	24.926398	2305.19	-2460.54

2.4 Star Slots

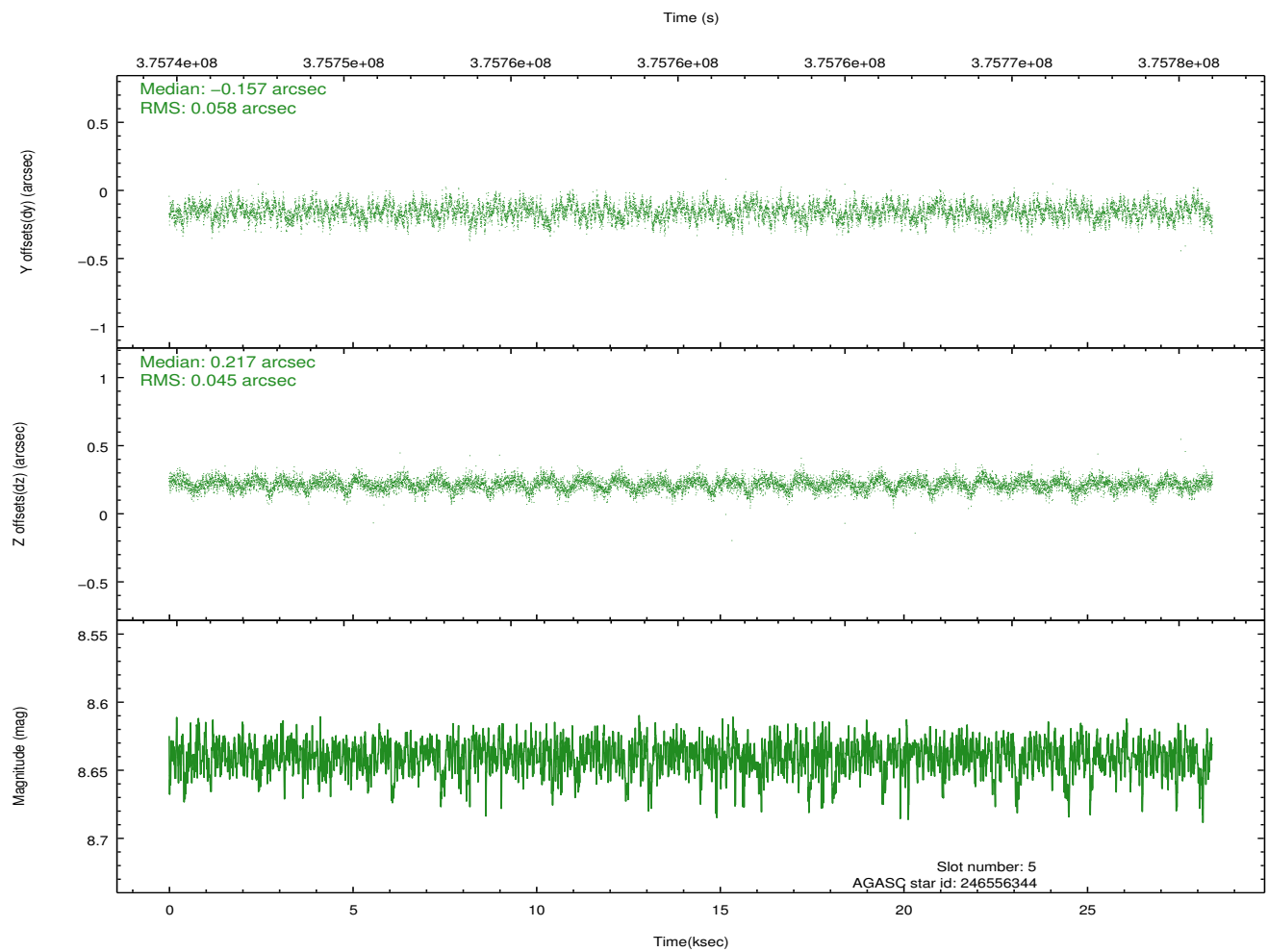
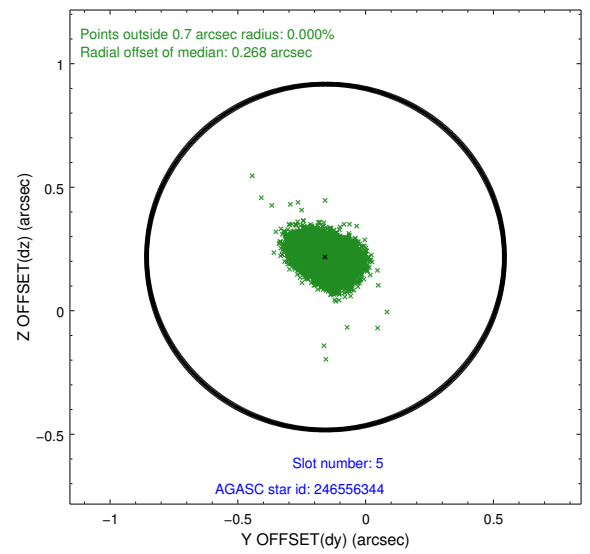
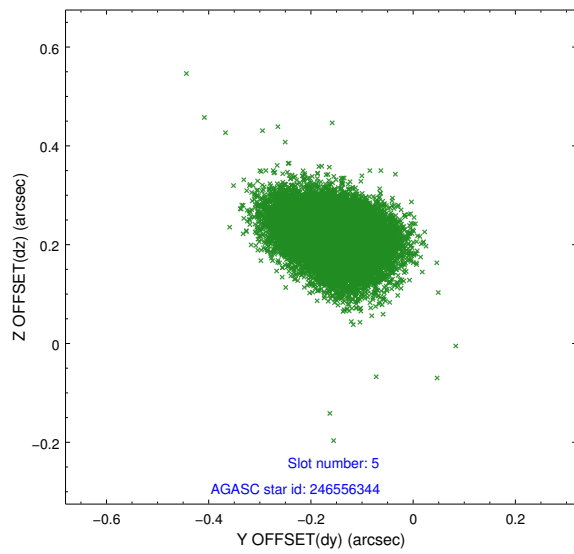
2.4.1 Slot 3



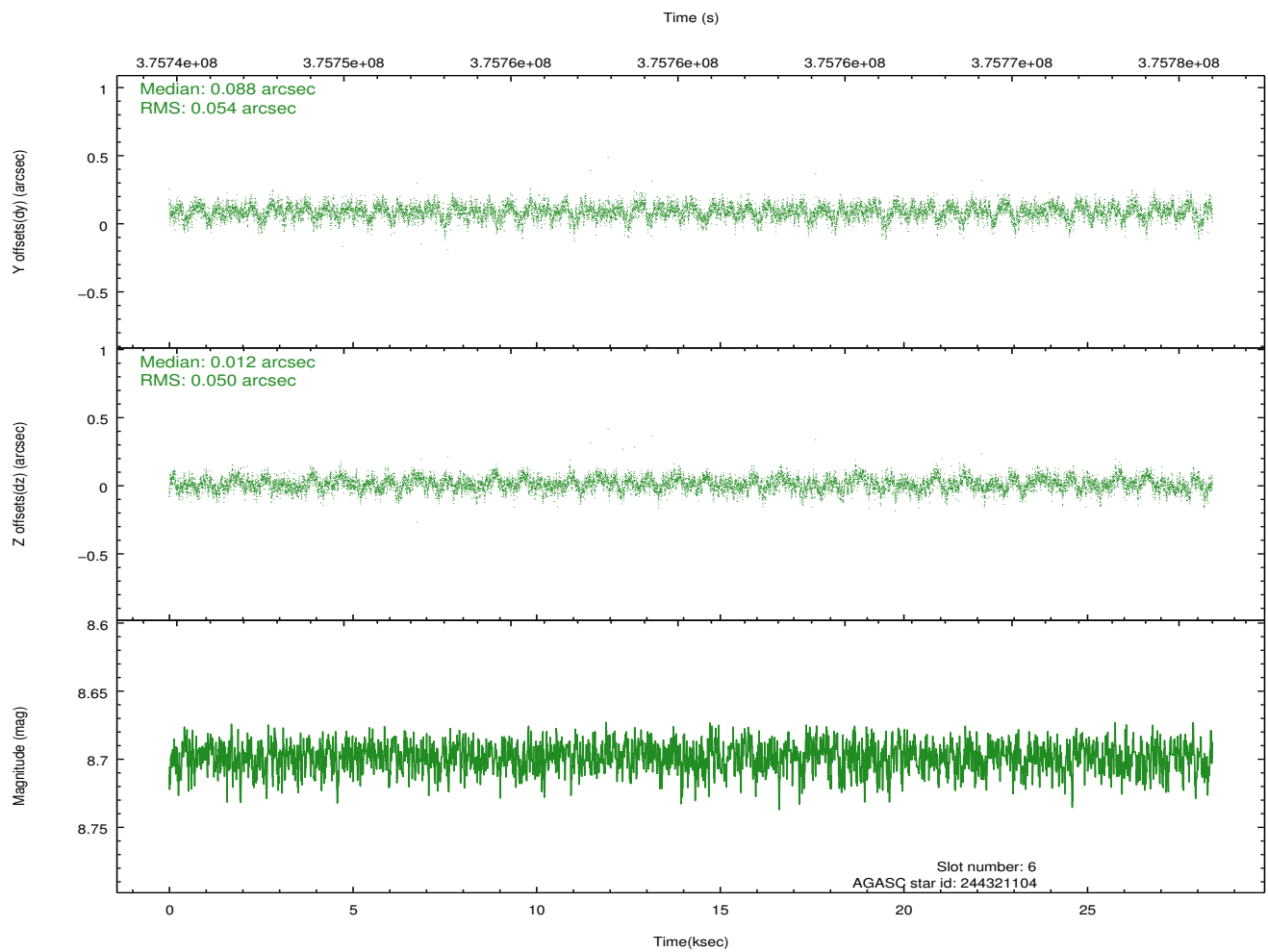
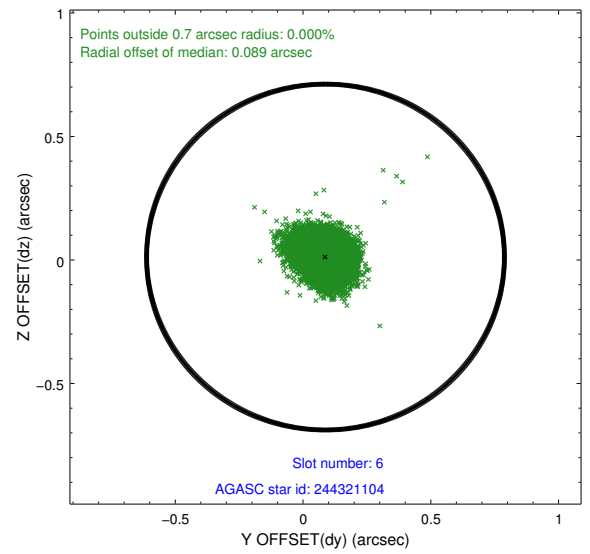
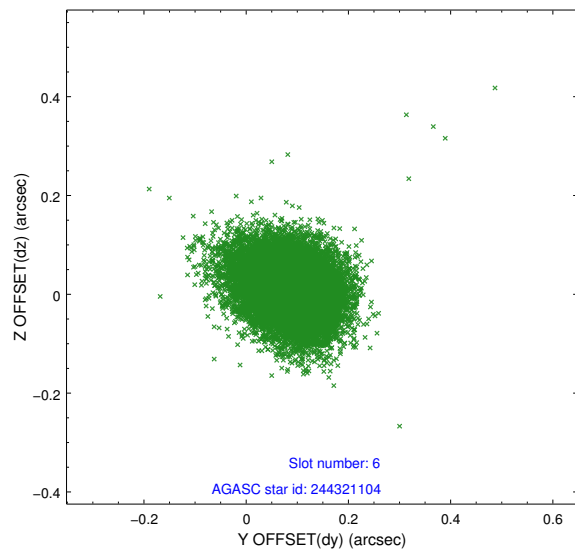
2.4.2 Slot 4



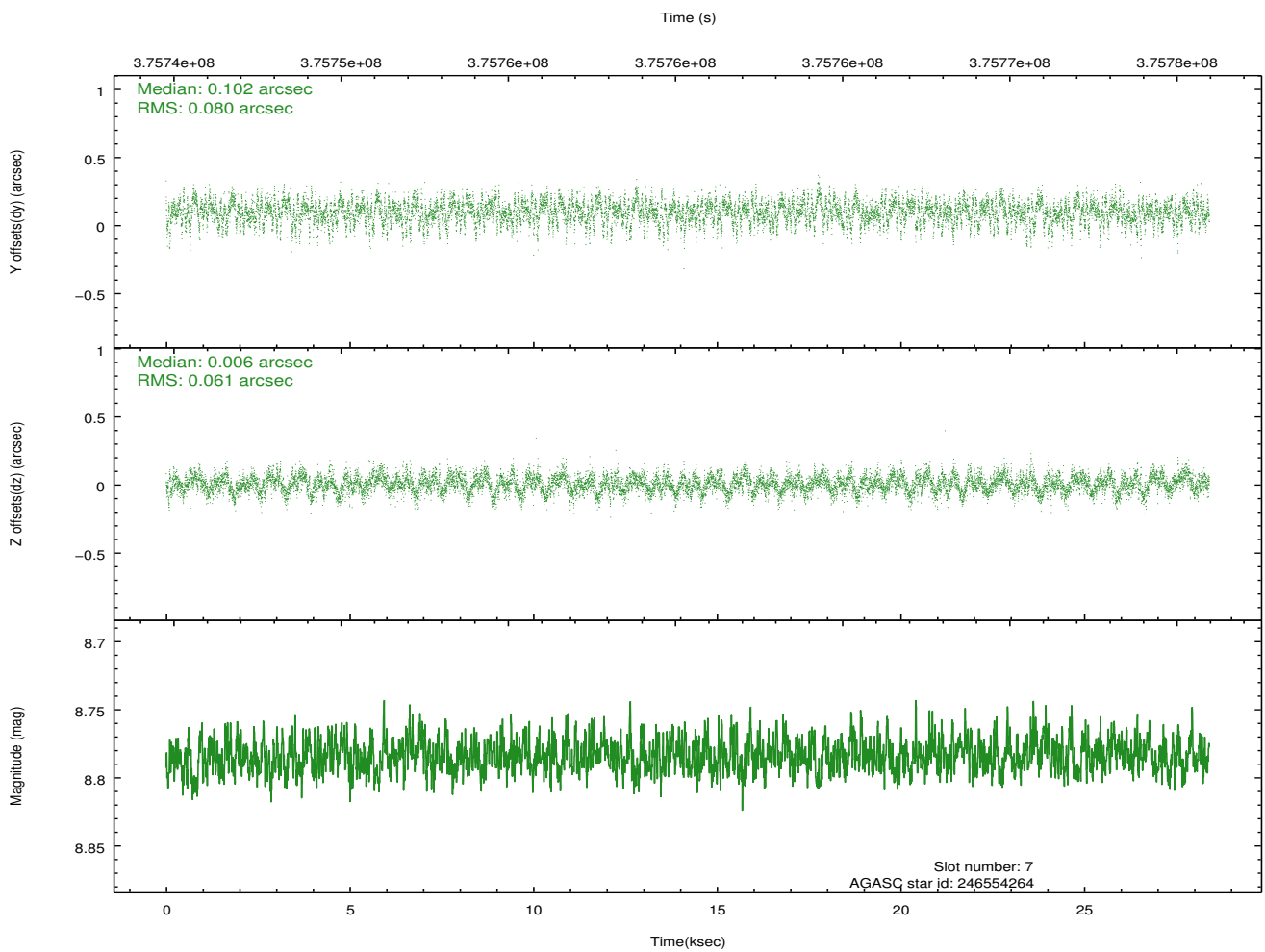
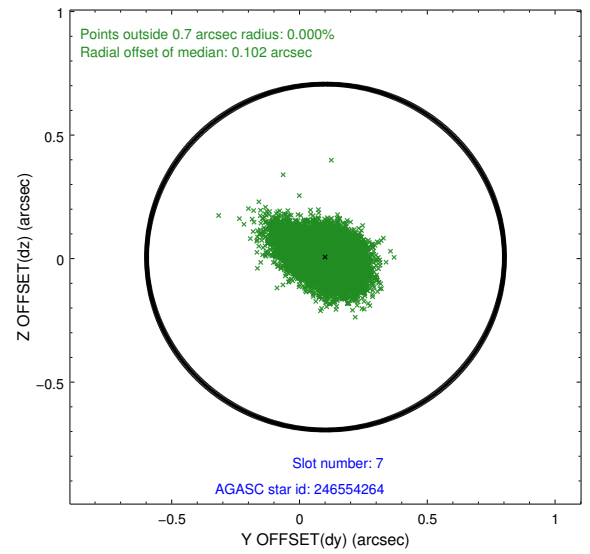
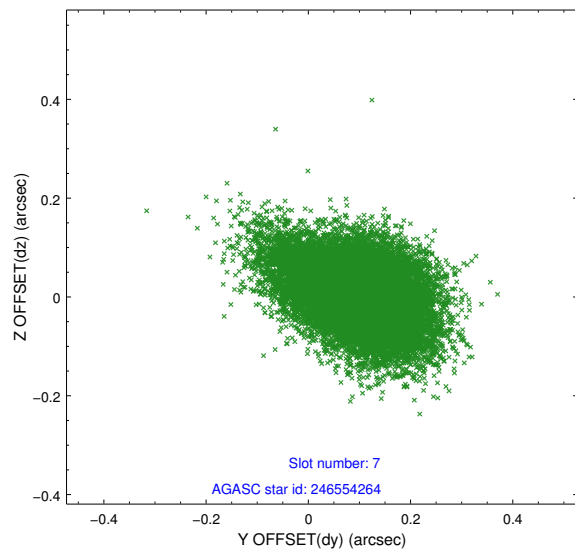
2.4.3 Slot 5



2.4.4 Slot 6

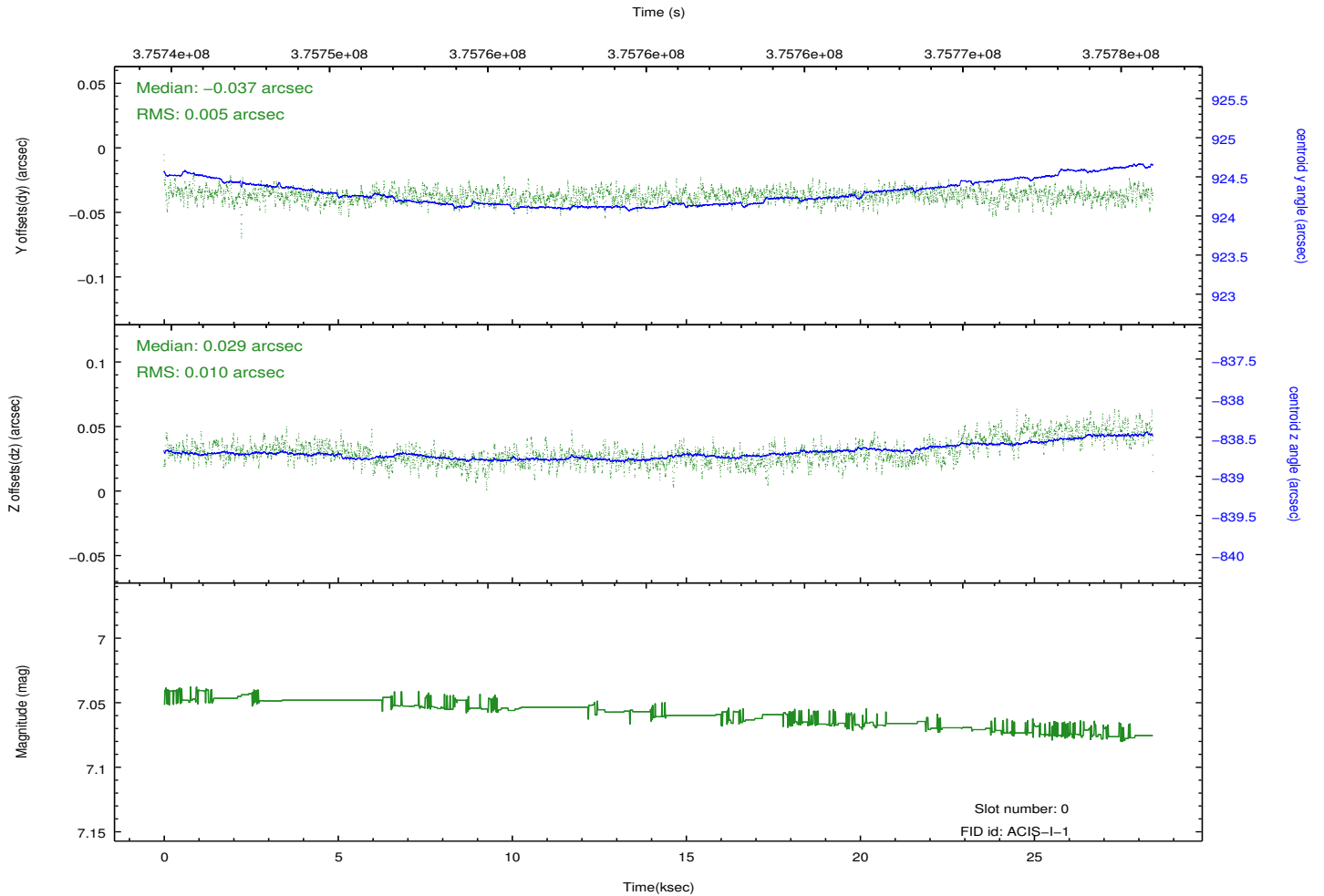
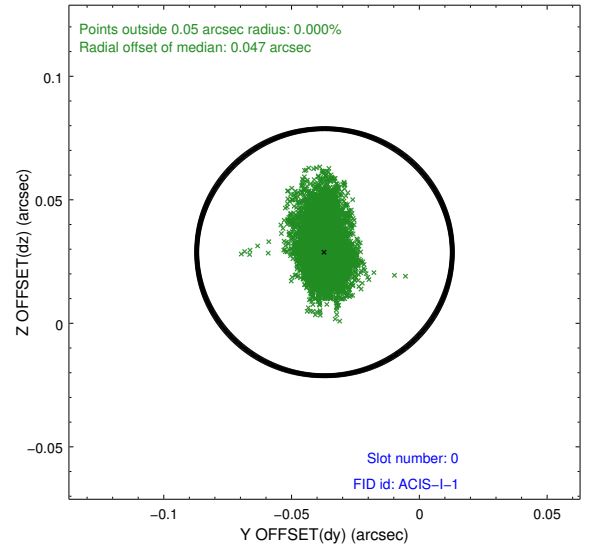
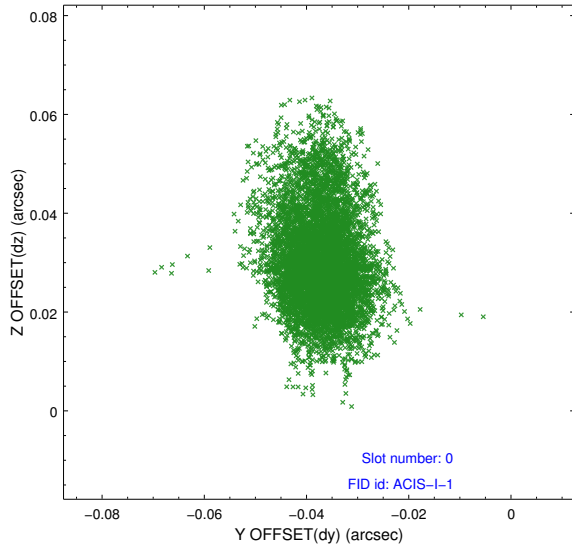


2.4.5 Slot 7

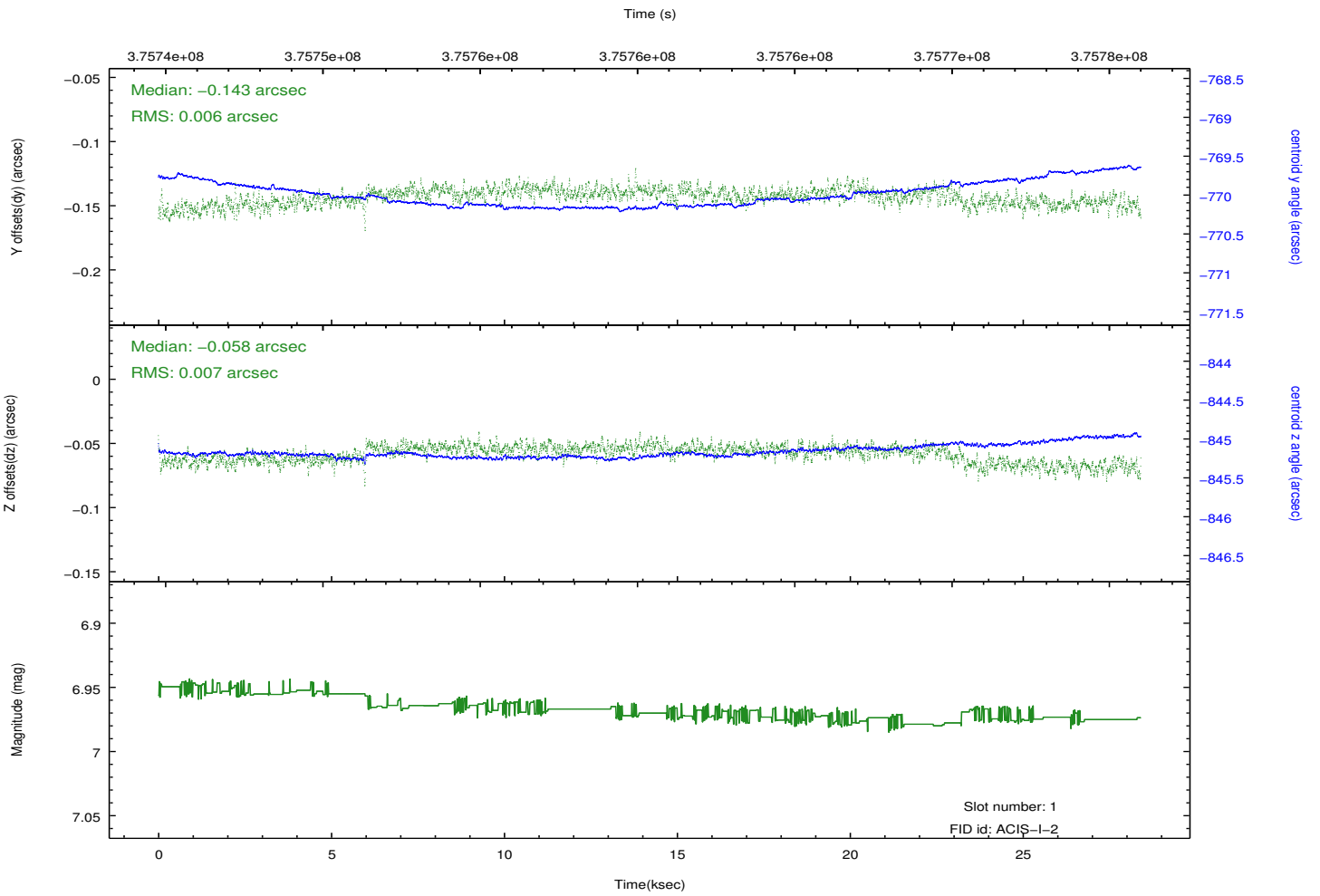
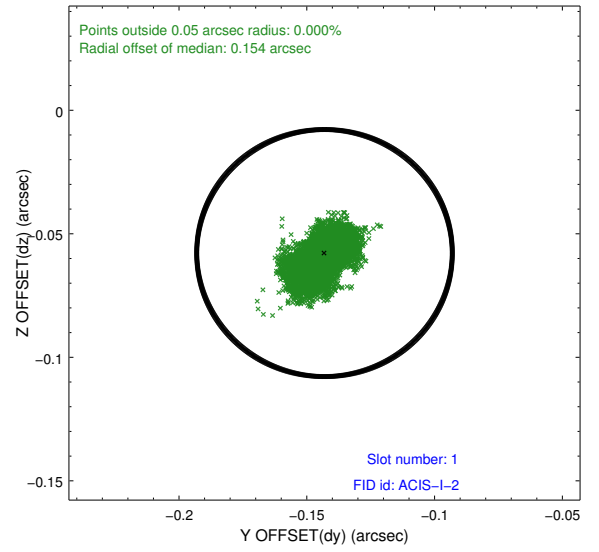
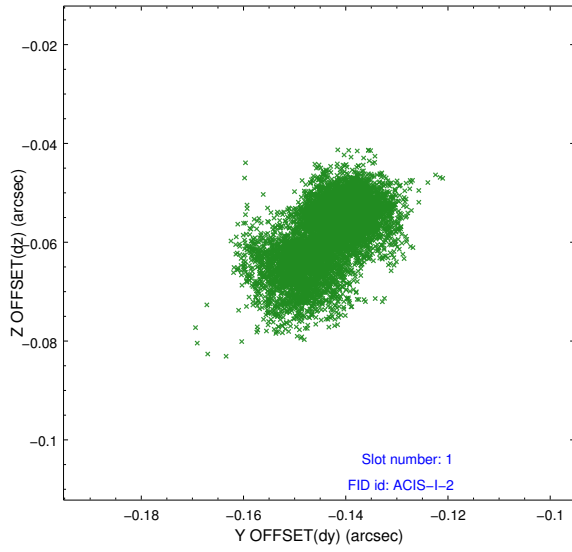


2.5 FID Slots

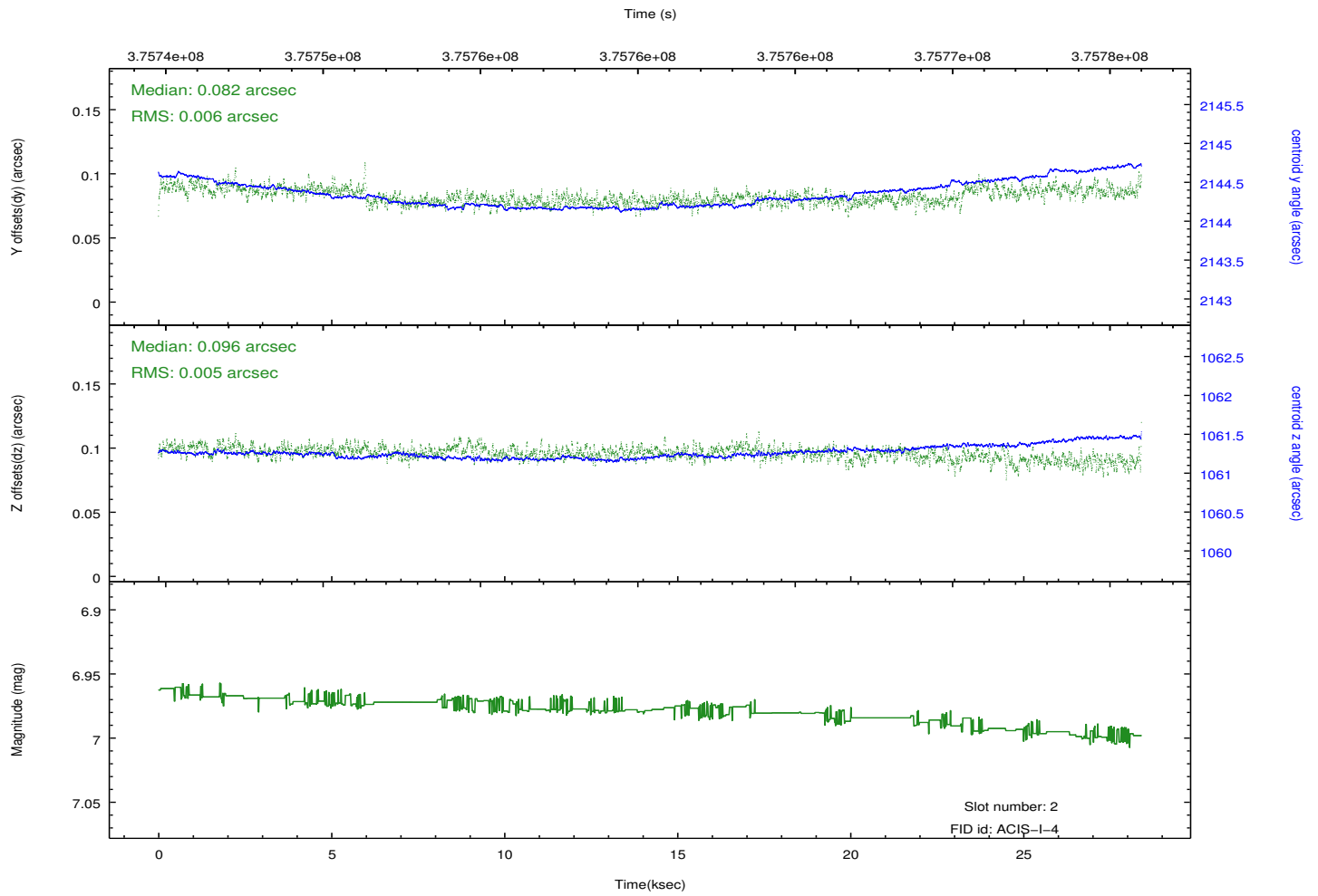
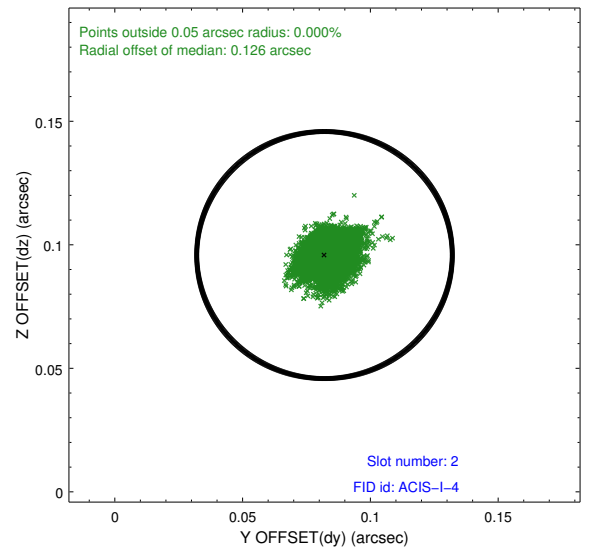
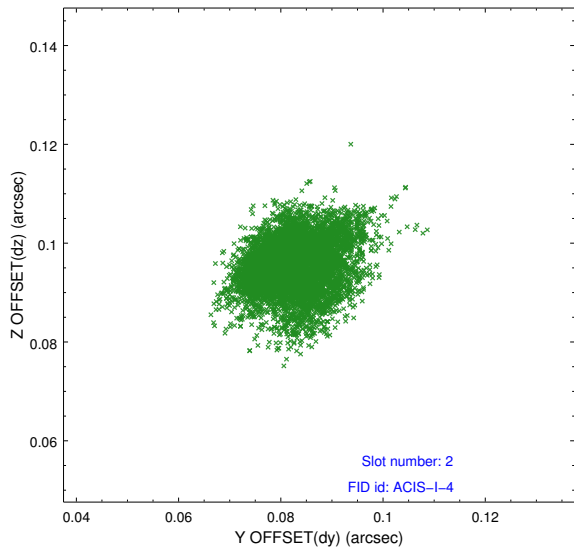
2.5.1 Slot 0



2.5.2 Slot 1



2.5.3 Slot 2



A Summary

A.1 Status

V&V Scientist	Jen Lauer
V&V Date (YYYY-MM-DD)	2012.06.21
V&V Edition	1
V&V Disposition and Status	OK
V&V Charge Time	27.951363595366

A.2 Comments