

# V&V Reference Report

## L2 ASCDS Version : 8.4.5

Observation 11028 - L2 Version 3  
Chandra X-Ray Center

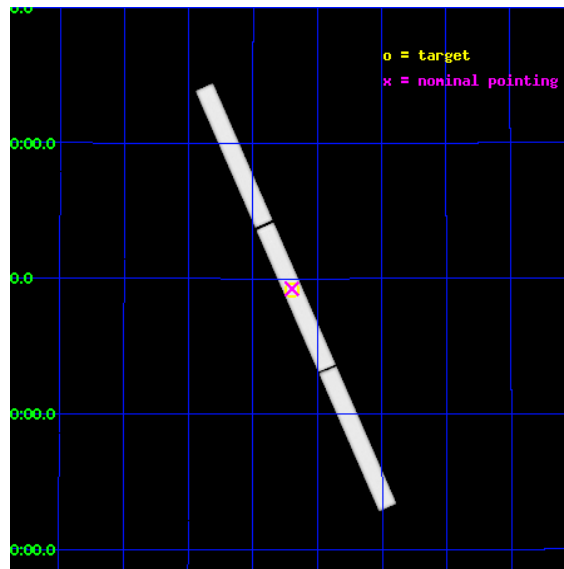
L2 Processing Date : Aug 14 2012

## Contents

<b>1</b>	<b>Front</b>	<b>2</b>
<b>2</b>	<b>OBI</b>	<b>3</b>
2.1	OBI . . . . .	3
2.1.1	Images . . . . .	3
2.1.2	Parameters . . . . .	4
2.1.3	Events . . . . .	4
2.2	Compared Parameters . . . . .	5
2.3	Aspect . . . . .	6
2.4	Star Slots . . . . .	9
2.4.1	Slot 3 . . . . .	9
2.4.2	Slot 4 . . . . .	10
2.4.3	Slot 5 . . . . .	11
2.4.4	Slot 6 . . . . .	12
2.4.5	Slot 7 . . . . .	13
2.5	FID Slots . . . . .	14
2.5.1	Slot 0 . . . . .	14
2.5.2	Slot 1 . . . . .	15
2.5.3	Slot 2 . . . . .	16
<b>3</b>	<b>Gratings</b>	<b>17</b>
3.1	LETG Arm . . . . .	17
<b>A</b>	<b>Summary</b>	<b>19</b>
A.1	Status . . . . .	19
A.2	Comments . . . . .	19

# 1 Front

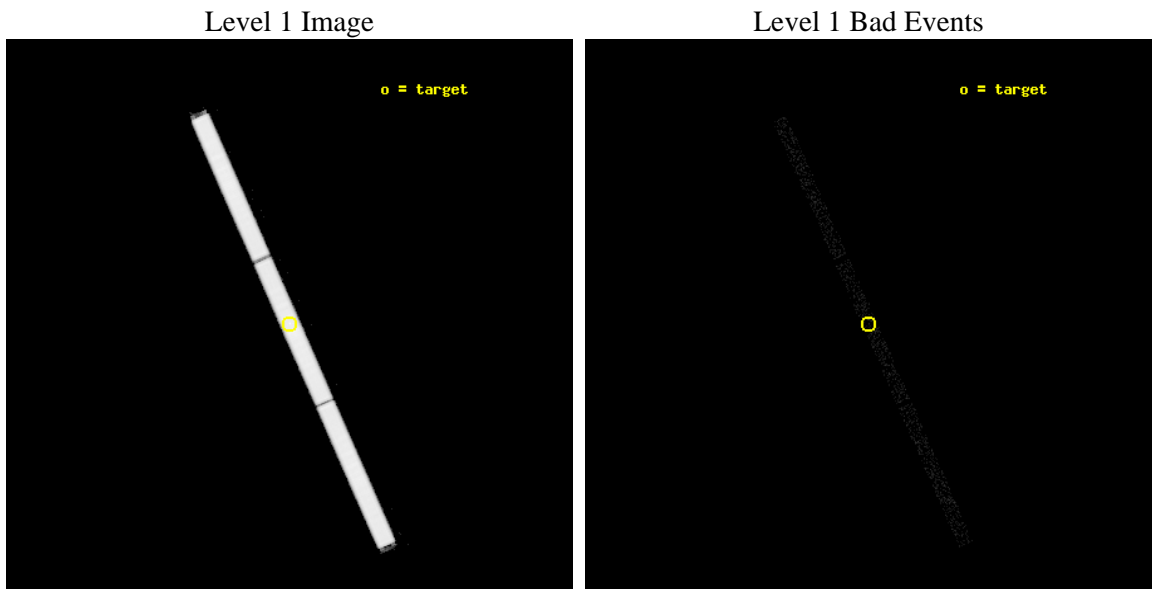
seq_num	300268	Sequence number
obs_id	11028	Observation id
title	High Resolution Spectroscopy of RX J0806.3+1527	Proposal title
observer	Dr. Tod Strohmayer	Principal investigator
object	RX J0806.3+1527	Source name
ra_targ	121.596667	Observer's specified target RA [deg]
dec_targ	15.458389	Observer's specified target Dec [deg]
ra_nom	121.59874128796	Nominal RA [deg]
dec_nom	15.462722121257	Nominal Dec [deg]
roll_nom	66.066785981936	Nominal Roll [deg]
revision	3	Processing version of data
ontime	40130.033277988	[s]
livetime	39684.762407952	Ontime multiplied by DTCOR
l2events	3788034	Number of level 2 events



## 2 OBI

### 2.1 OBI

#### 2.1.1 Images



## 2.1.2 Parameters

obi_num	0	Obi number	sched_exp_time	40000.000000	[s] Scheduled observation exposure time
ascdsver	8.4.5	Processing system revision	ontime	40130.033277988	[s]
caldbver	4.5.1.1	&#160	l1events	5018210	Number of level 1 events
date	2012-08-13T20:12:24	Date and time of file creation			
revision	3	Processing version of data			

## 2.1.3 Events

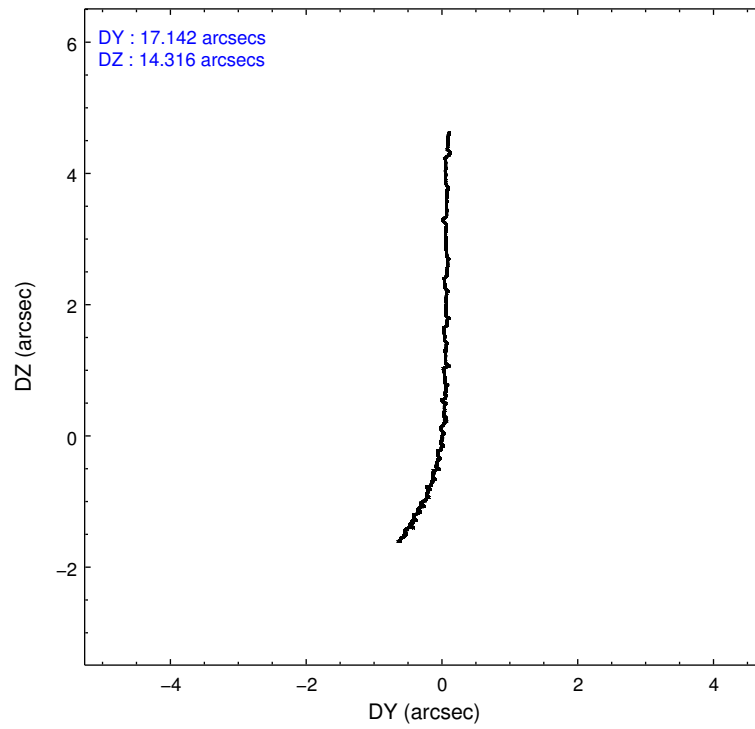
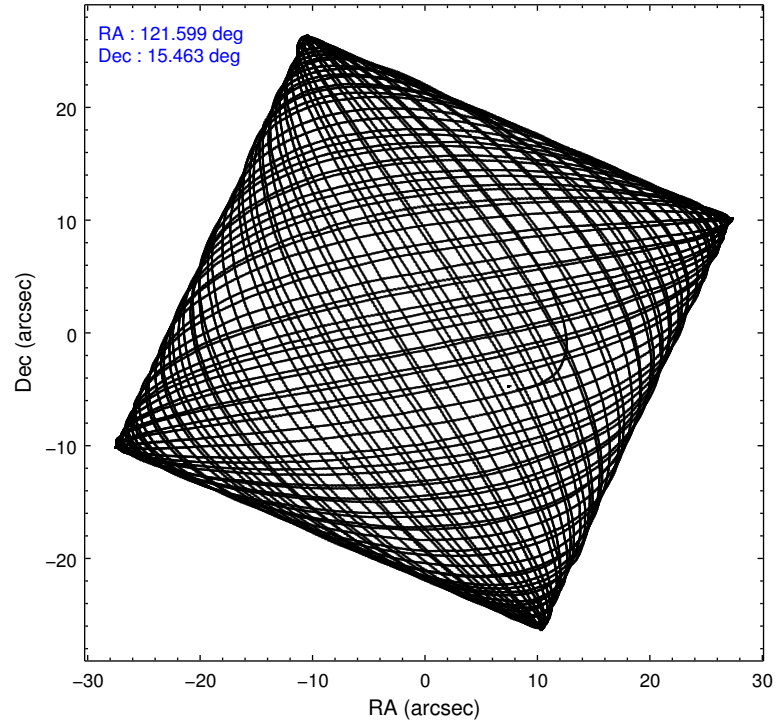
### Level 1 Events

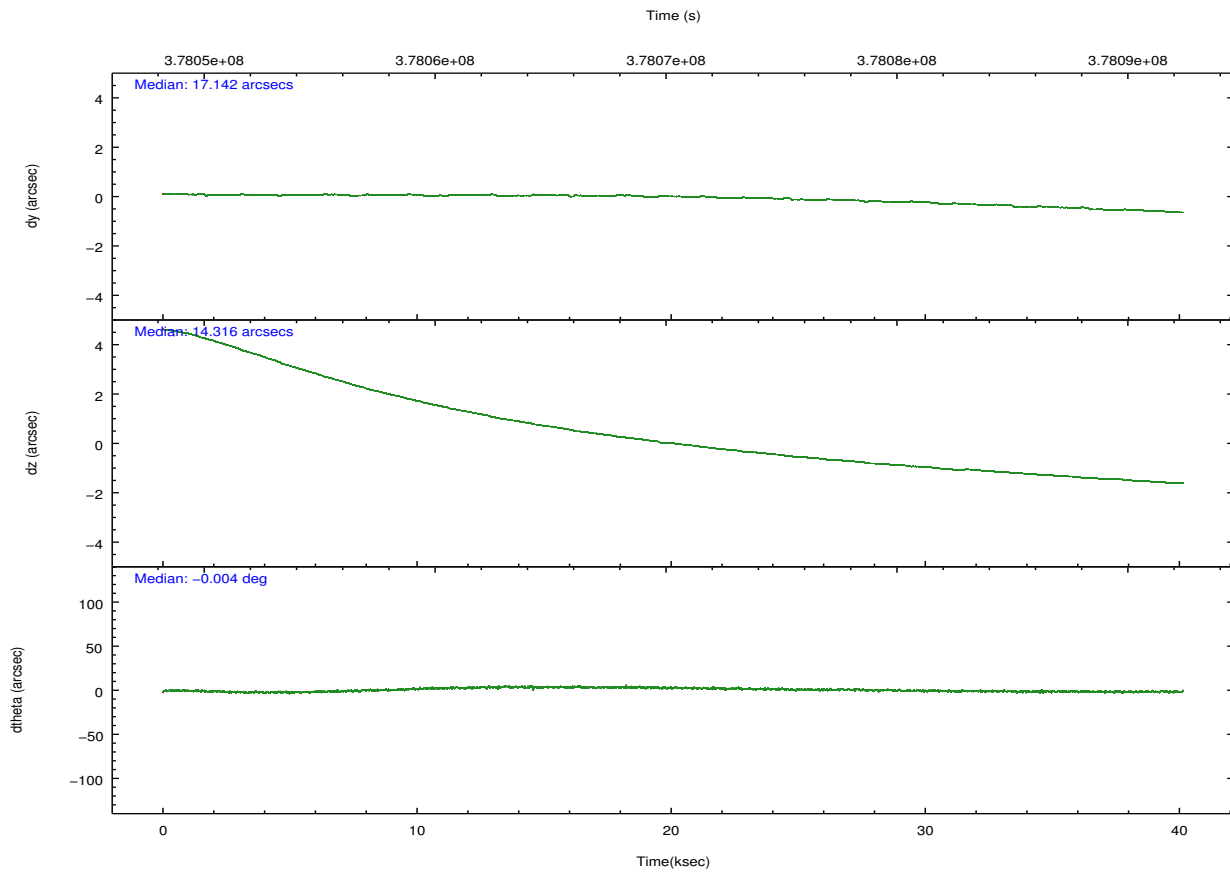
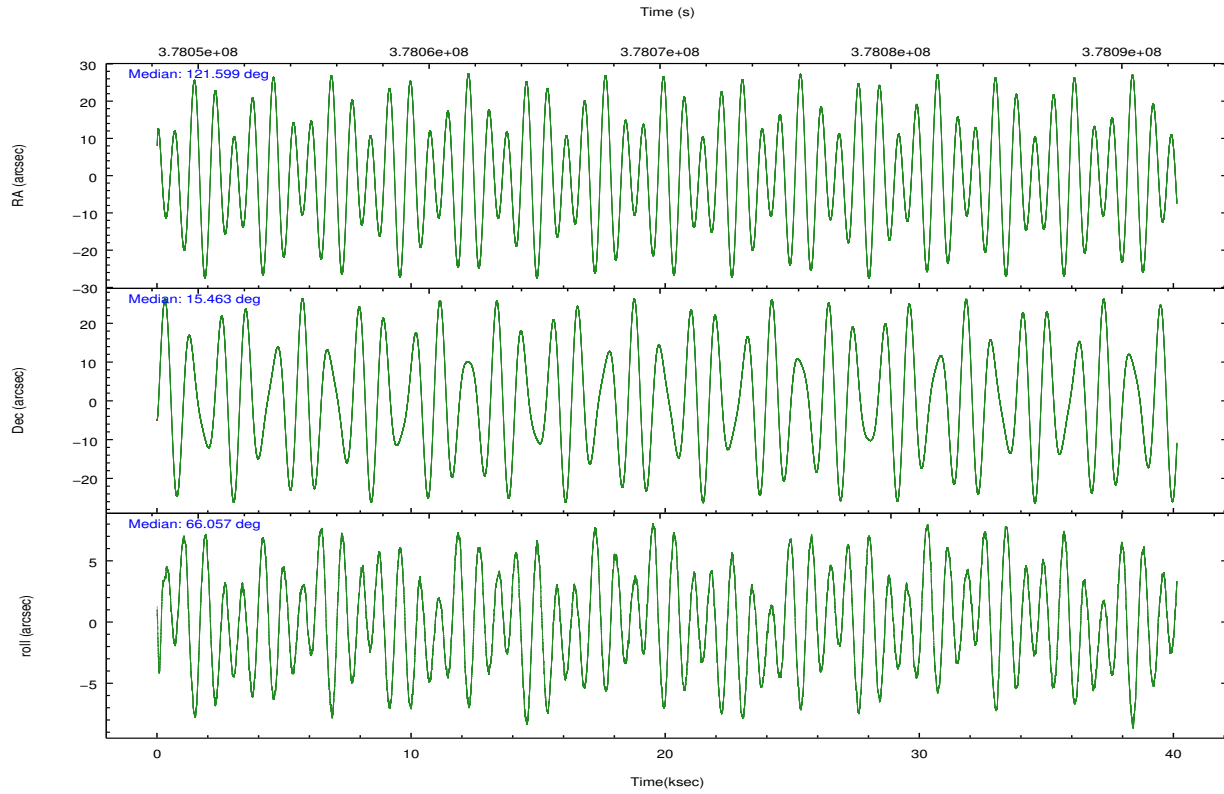
	<b>segment 1</b>	<b>segment 2</b>	<b>segment 3</b>
level 1 events	1674082	1662537	1681591
rejected events	45470	45503	45772
rejected %	2%	2%	2%

## 2.2 Compared Parameters

Parameter	Planned	Actual	Parameter	Planned	Actual
Instrument	HRC	HRC	Obspar format version number	7	7
Detector	HRC-S	HRC-S	Obspar file type	PREDICTED	ACTUAL
Grating	LETG	LETG	Obspar update status	NONE	UPDATED
Data mode	OBSERVING	OBSERVING			
Observation mode	POINTING	POINTING			
[deg] Pointing RA	121.603356	121.5987412879589			
[deg] Pointing Dec	15.434354	15.46272212125683			
[deg] Pointing Roll	65.998223	66.06678598193572			
[mm] SIM focus pos	-1.429586	-1.428180813131781			
[mm] SIM defocus	0.1037507710433287	0.1051558262725154			
[mm] SIM translation stage pos	250.455976	250.466033080201			
[mm] SIM translation stage offset	0	-0.01005468664627074			
[s] Observation start time (MET)	378050380.184000	378049159.66674			
Observation start date	2009-12-24T13:58:34	2009-12-24T13:39:19			
[s] Observation end time (MET)	378090380.184000	378090994.53136			
Observation end date	2009-12-25T01:05:14	2009-12-25T01:16:34			

## 2.3 Aspect



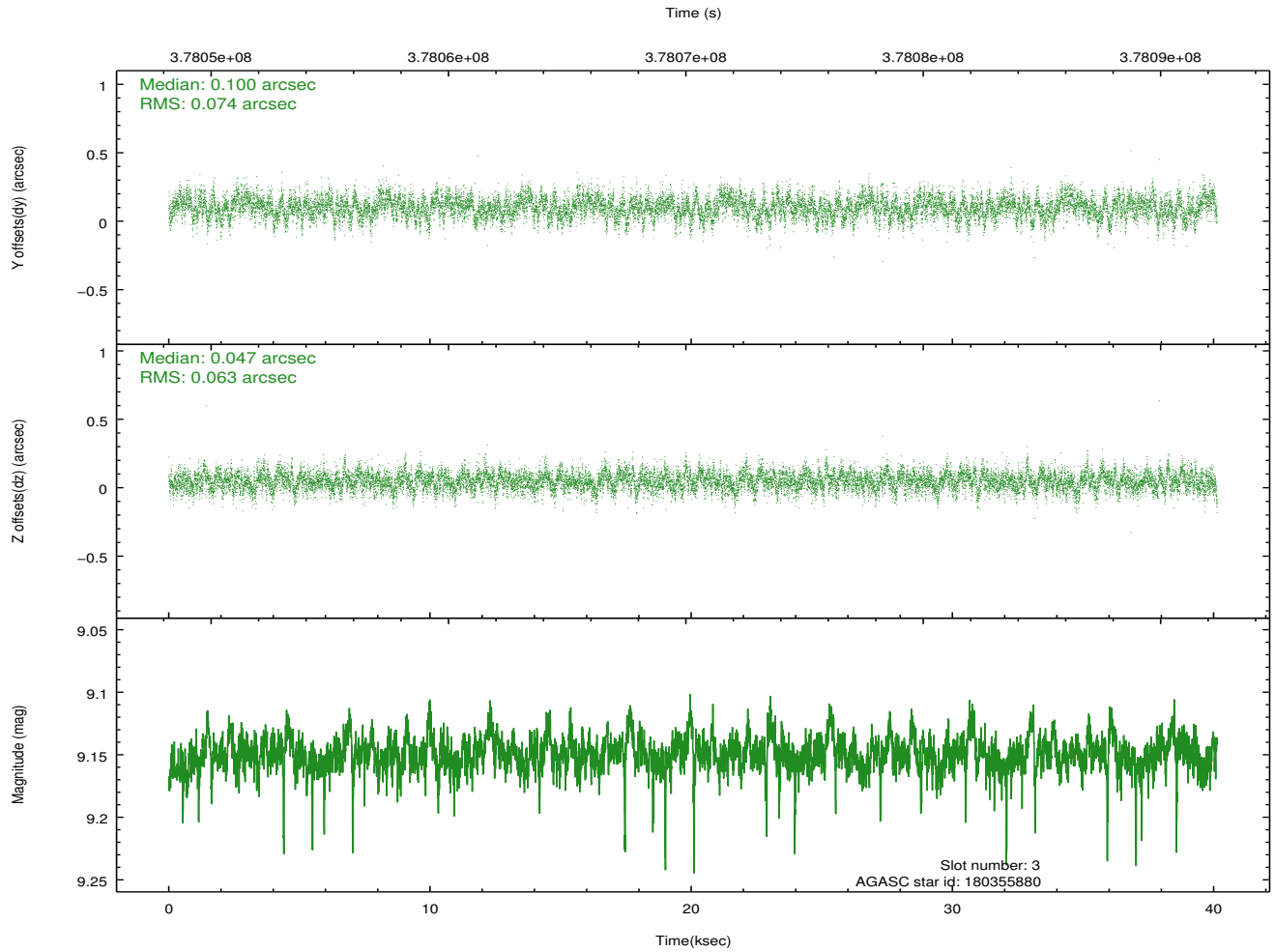
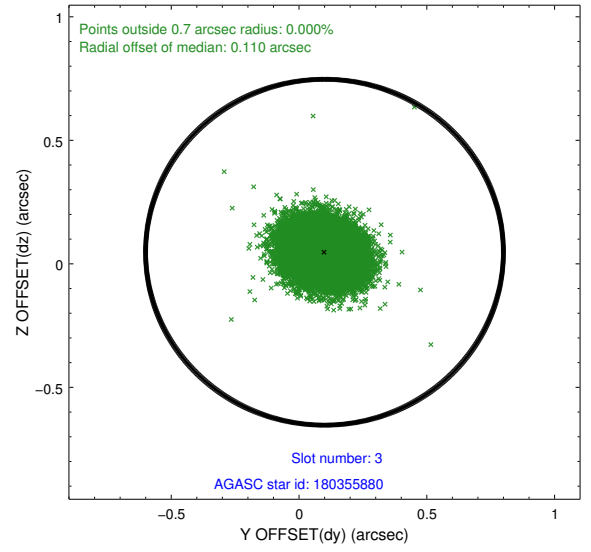
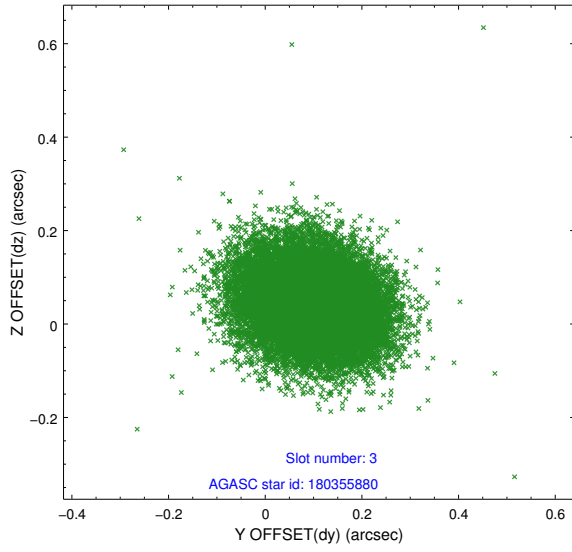


### Slot Statistics

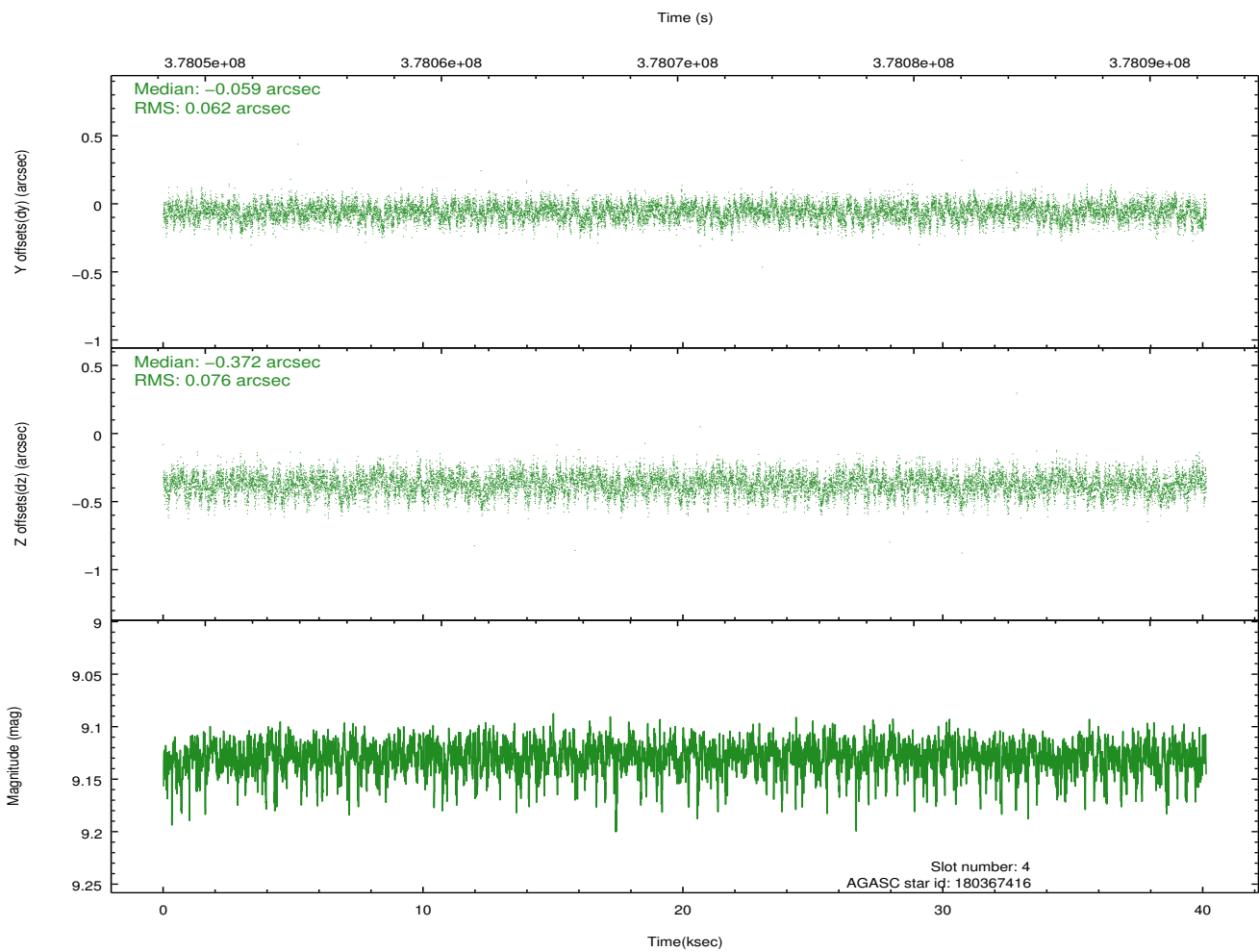
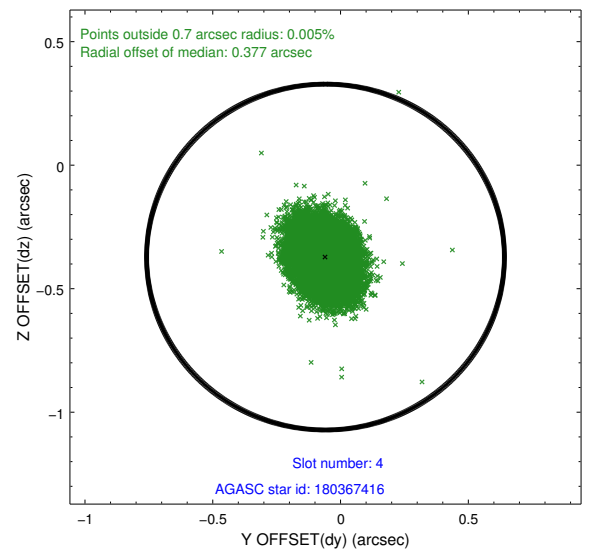
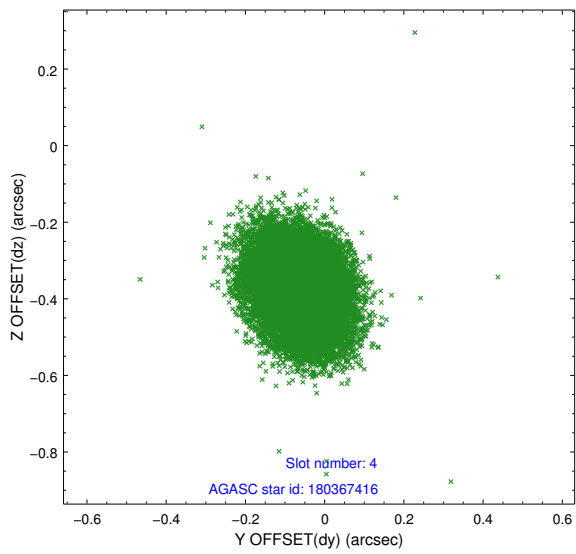
slot	status	id	mag	n_pts	med_dy	med_dz	dr1	dr2	ra	dec	mean_y	mean_z
0	FID	HRC-S-1	7.03	9789	0.054	-0.166	0.036	0.049	0.000000	0.000000	-1171.52	-463.72
1	FID	HRC-S-2	7.01	9789	0.274	-0.129	0.013	0.037	0.000000	0.000000	1228.26	-456.34
2	FID	HRC-S-3	7.04	9789	0.063	-0.010	0.038	0.050	0.000000	0.000000	-1174.11	565.92
3	GUIDE	180355880	9.15	19525	0.100	0.047	0.103	0.168	120.943434	15.103820	-2016.93	1612.88
4	GUIDE	180367416	9.13	19562	-0.059	-0.372	0.104	0.168	120.920648	15.525818	-659.50	2298.79
5	GUIDE	180368232	7.76	19572	-0.136	0.182	0.076	0.124	121.537793	15.346691	-380.93	80.23
6	GUIDE	180370112	8.39	19566	0.029	-0.066	0.075	0.122	121.144488	15.364256	-879.97	1353.97
7	GUIDE	103956184	8.52	19565	0.066	0.209	0.090	0.144	122.093586	14.853591	-1214.02	-2407.41

## 2.4 Star Slots

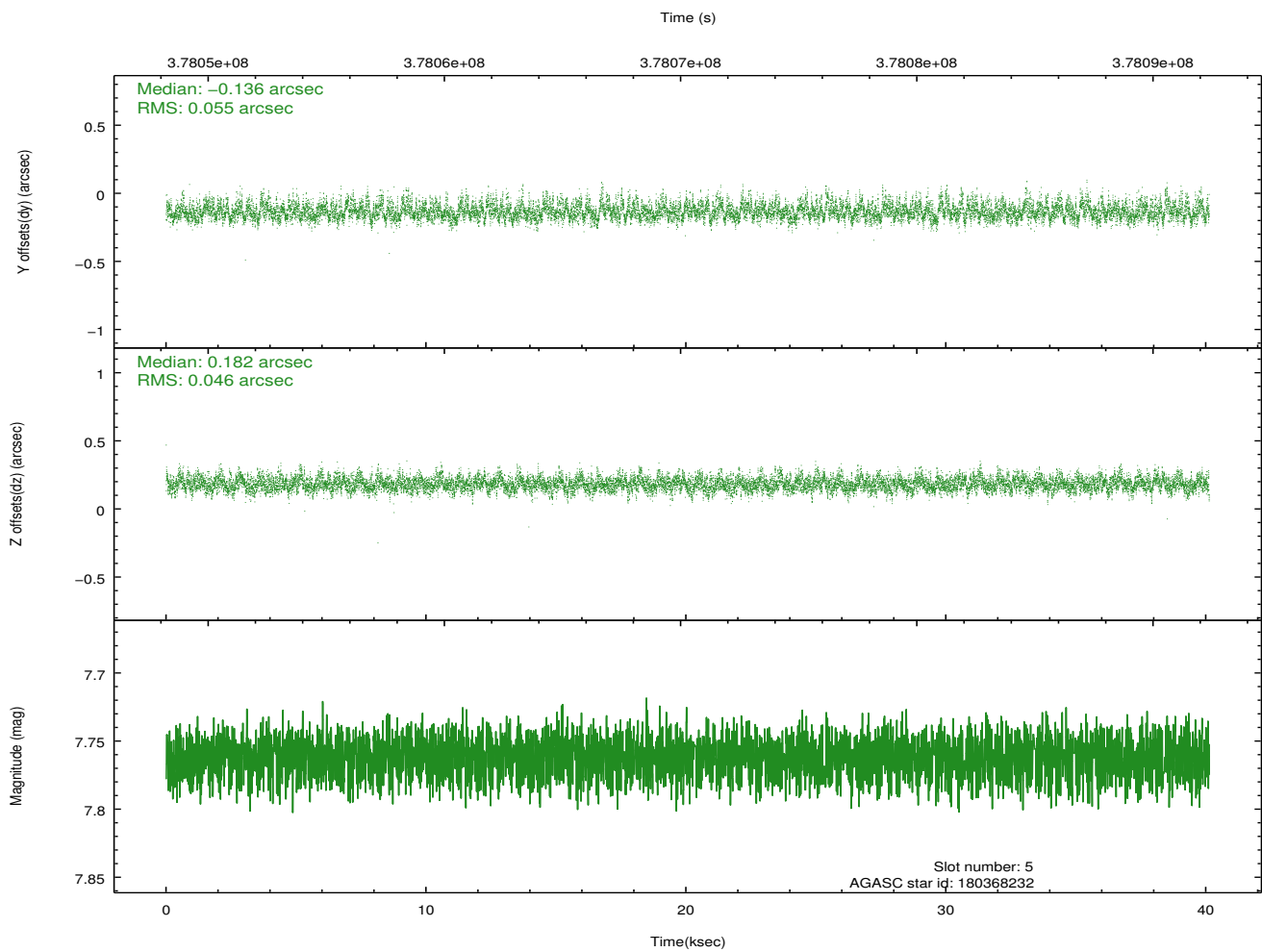
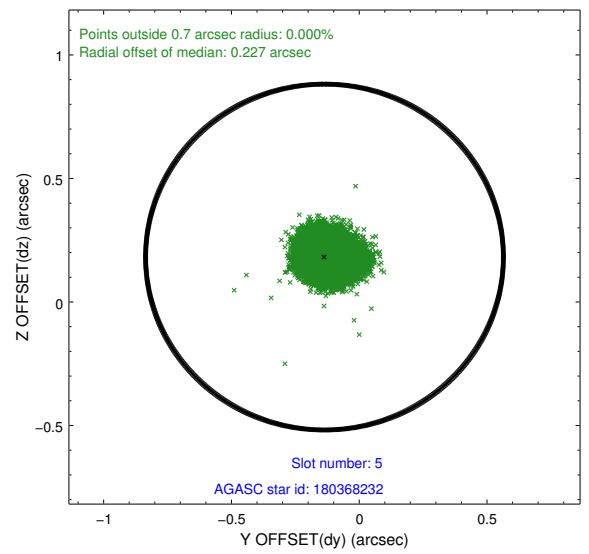
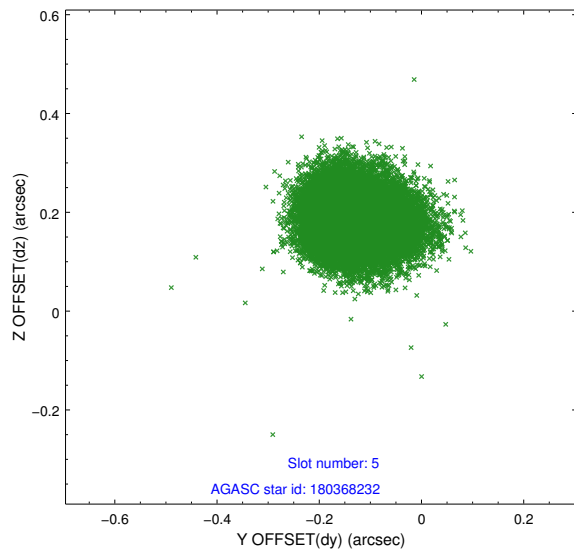
### 2.4.1 Slot 3



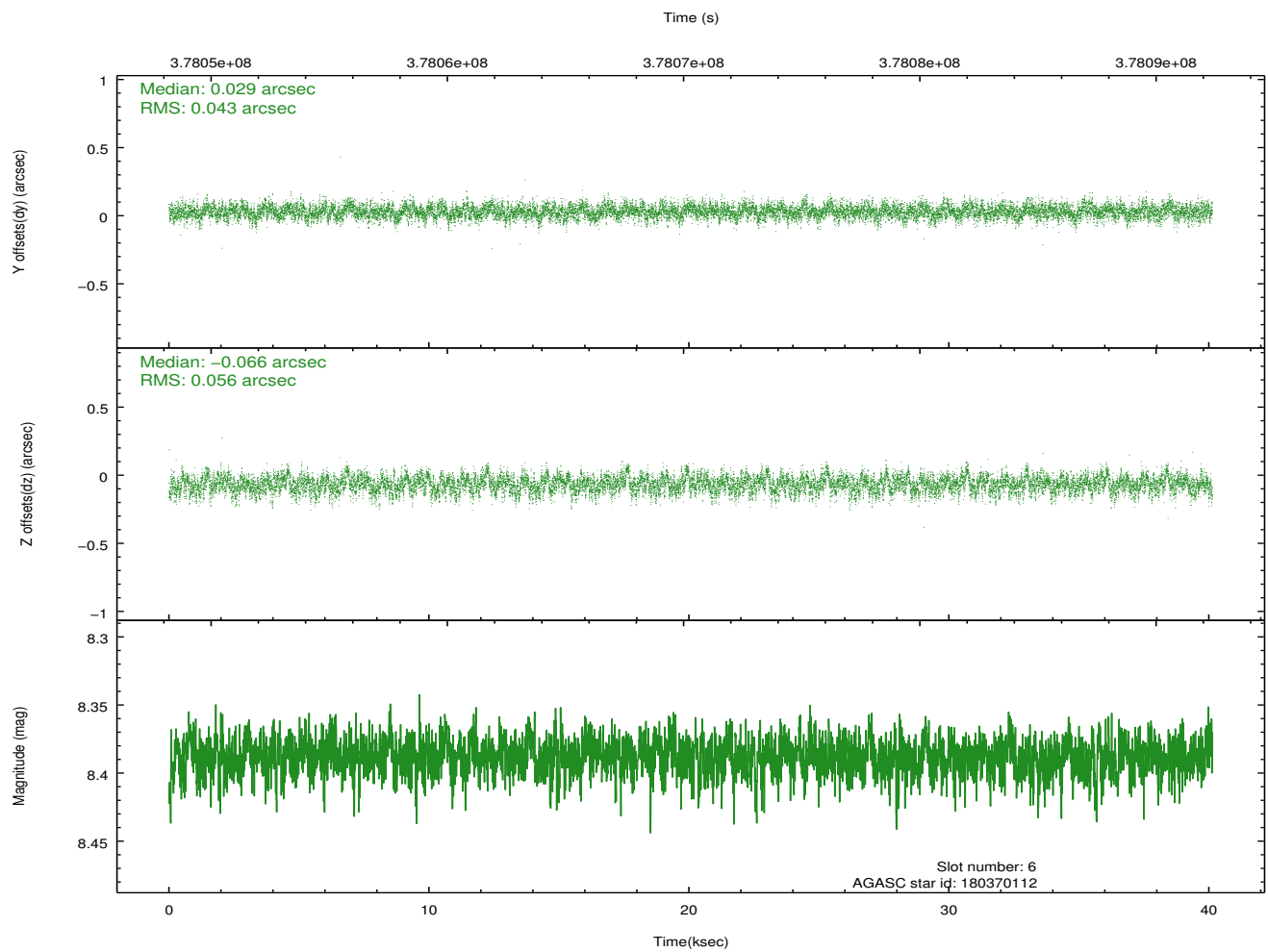
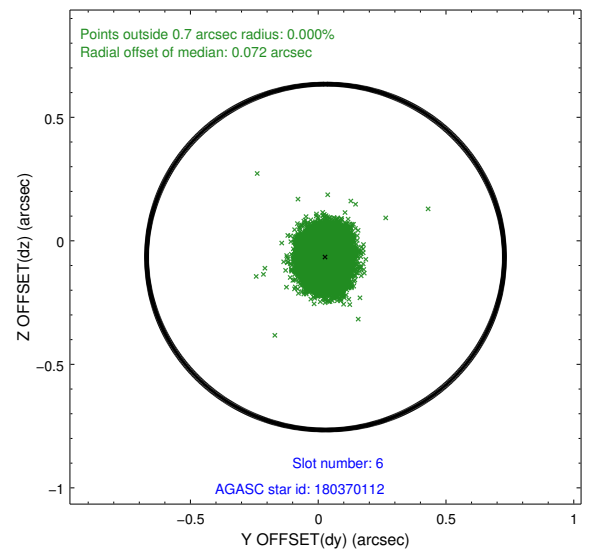
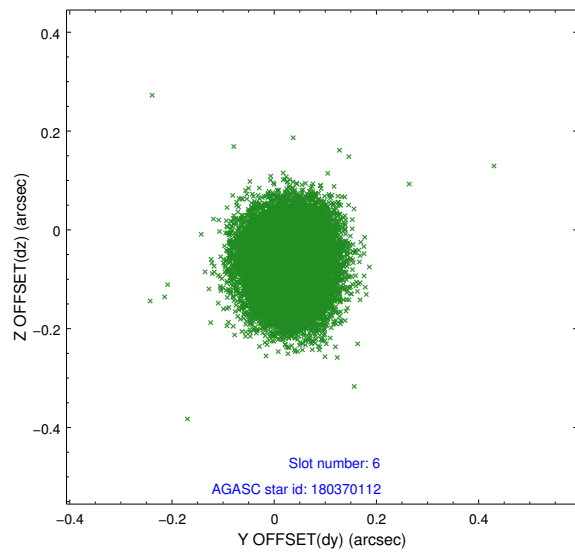
## 2.4.2 Slot 4



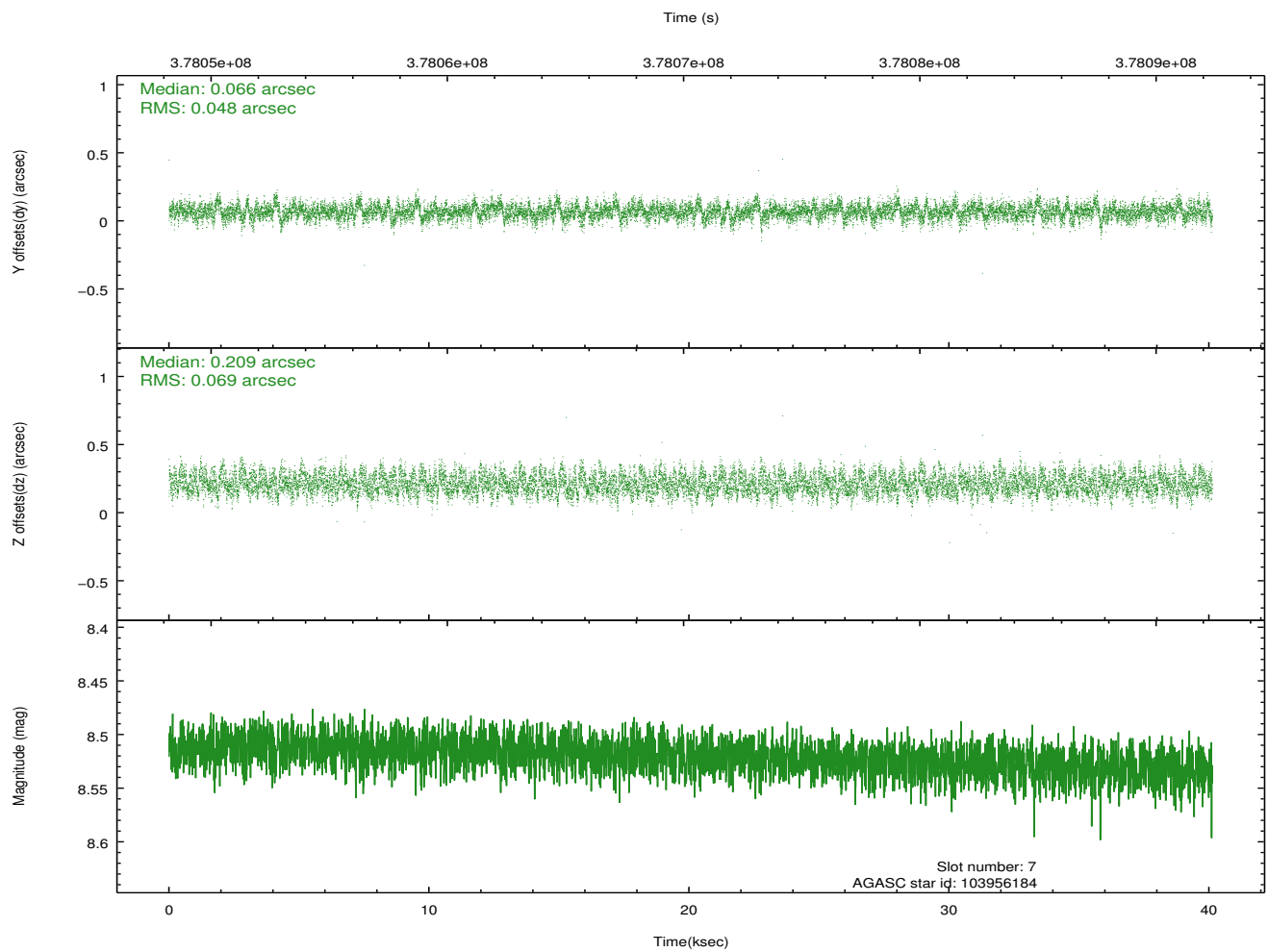
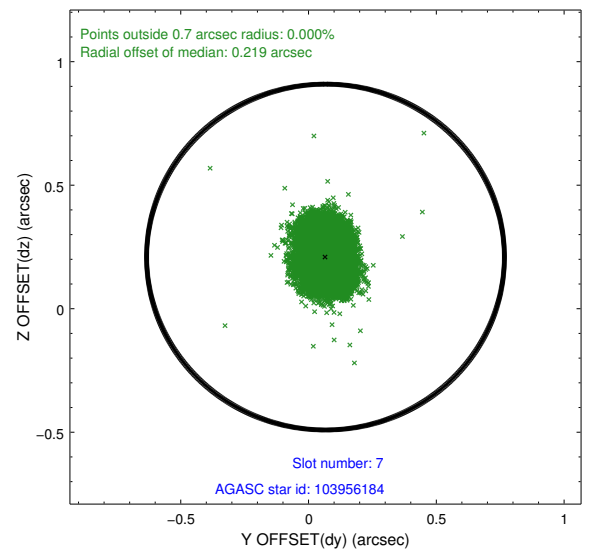
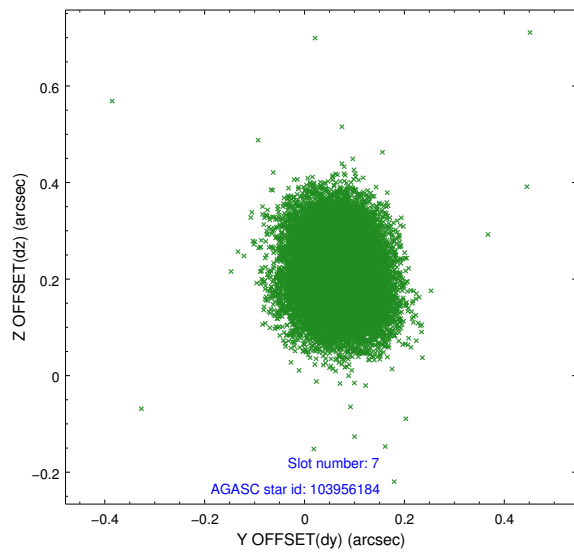
### 2.4.3 Slot 5



## 2.4.4 Slot 6

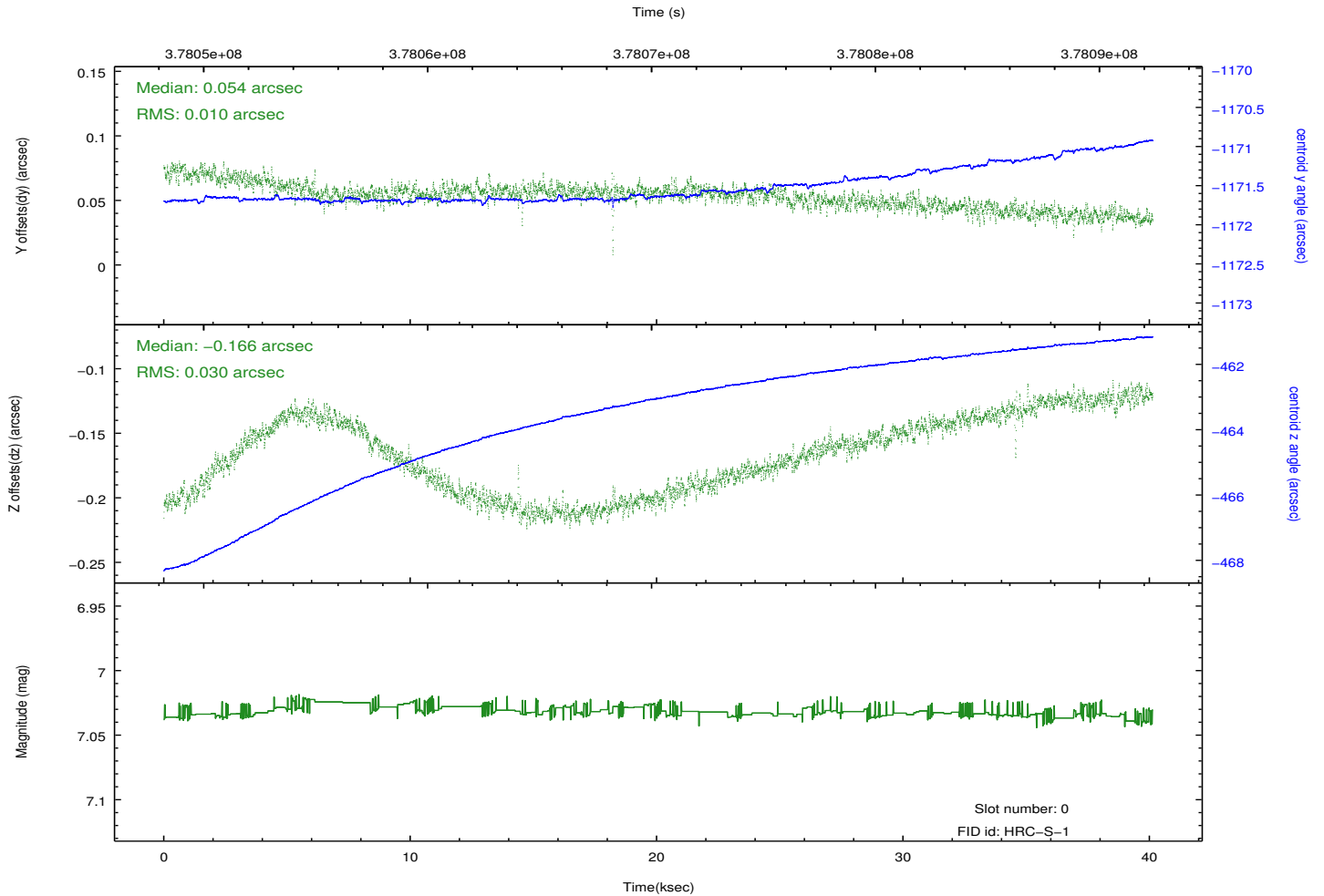
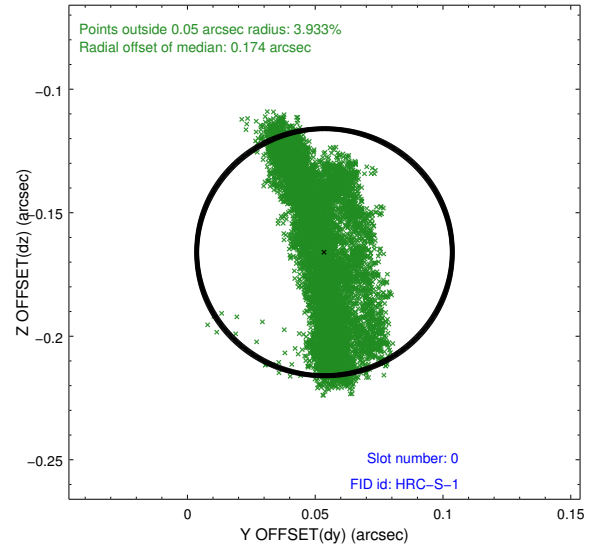
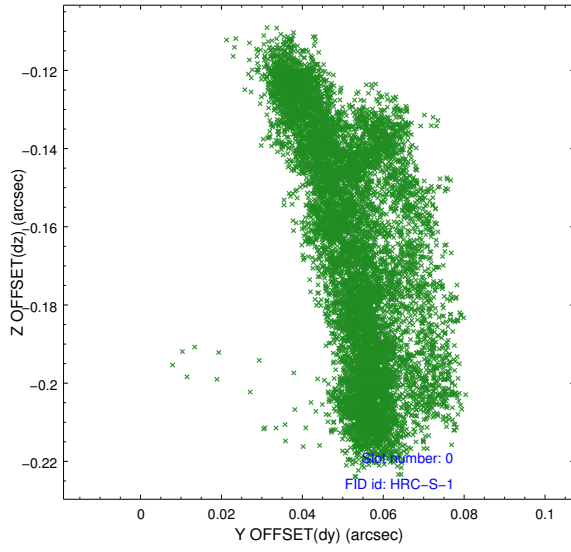


## 2.4.5 Slot 7

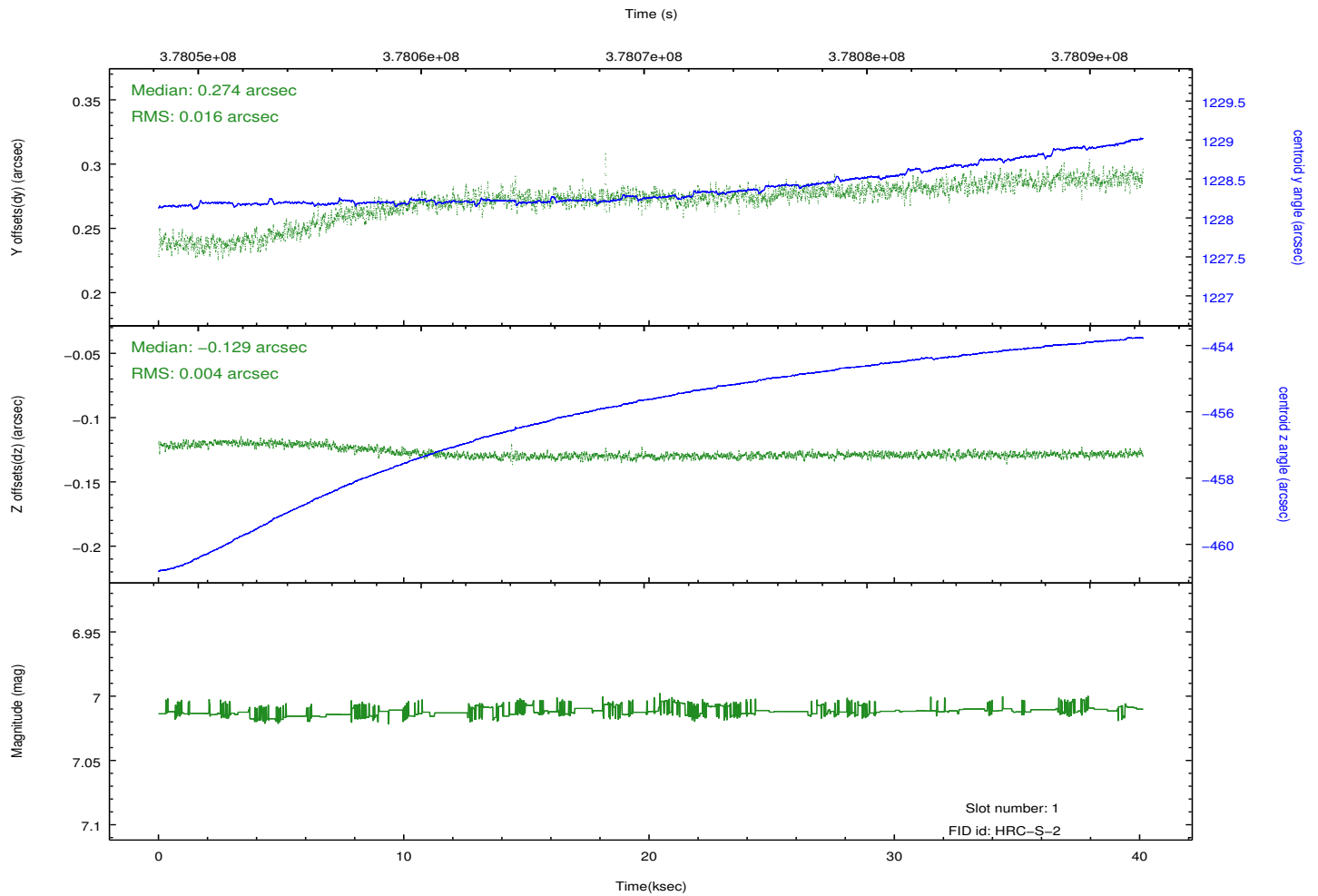
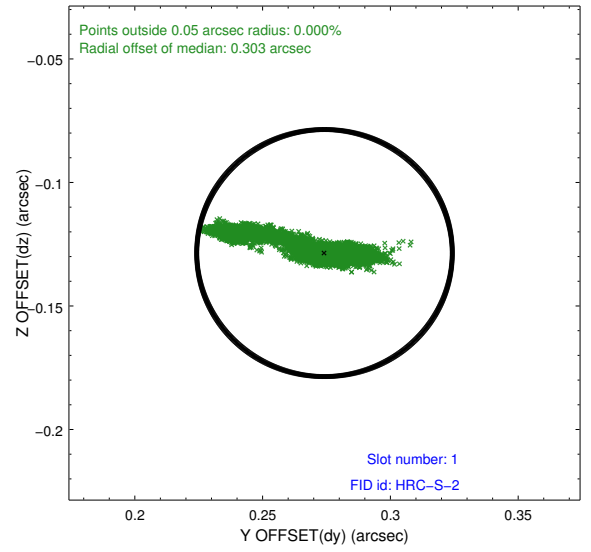
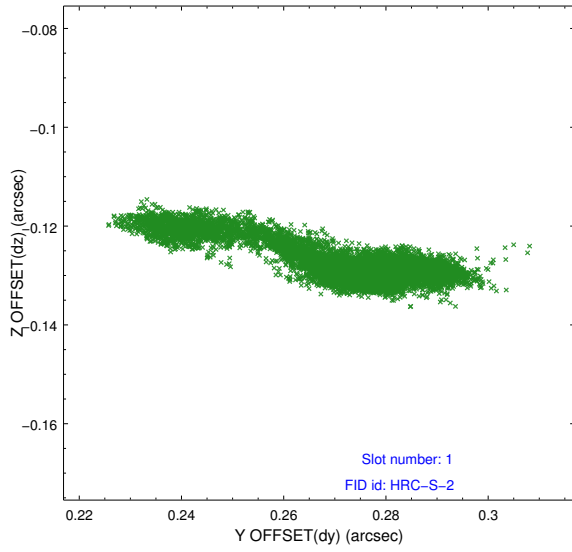


## 2.5 FID Slots

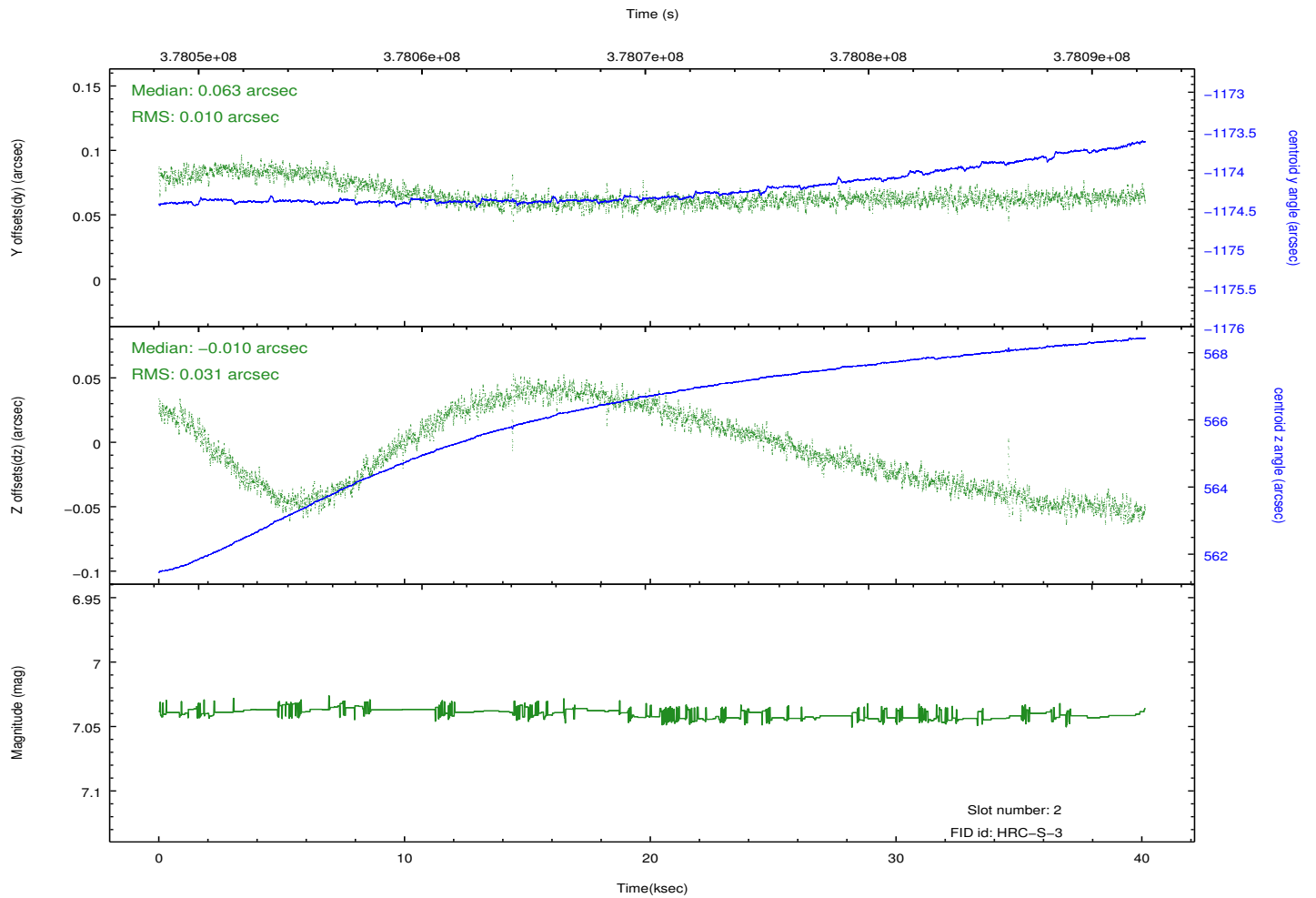
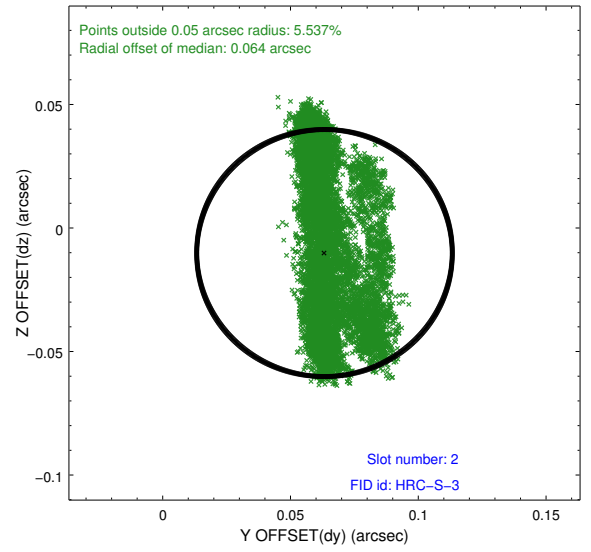
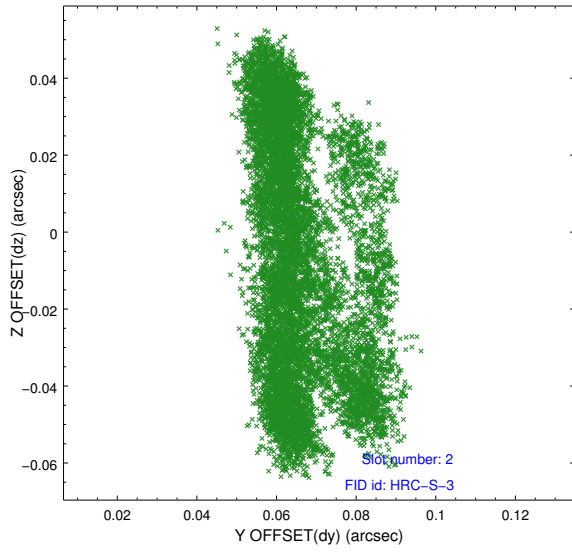
### 2.5.1 Slot 0



## 2.5.2 Slot 1

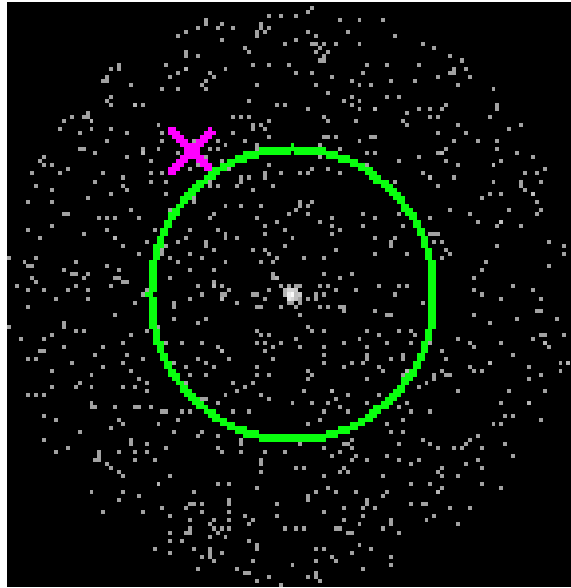


### 2.5.3 Slot 2

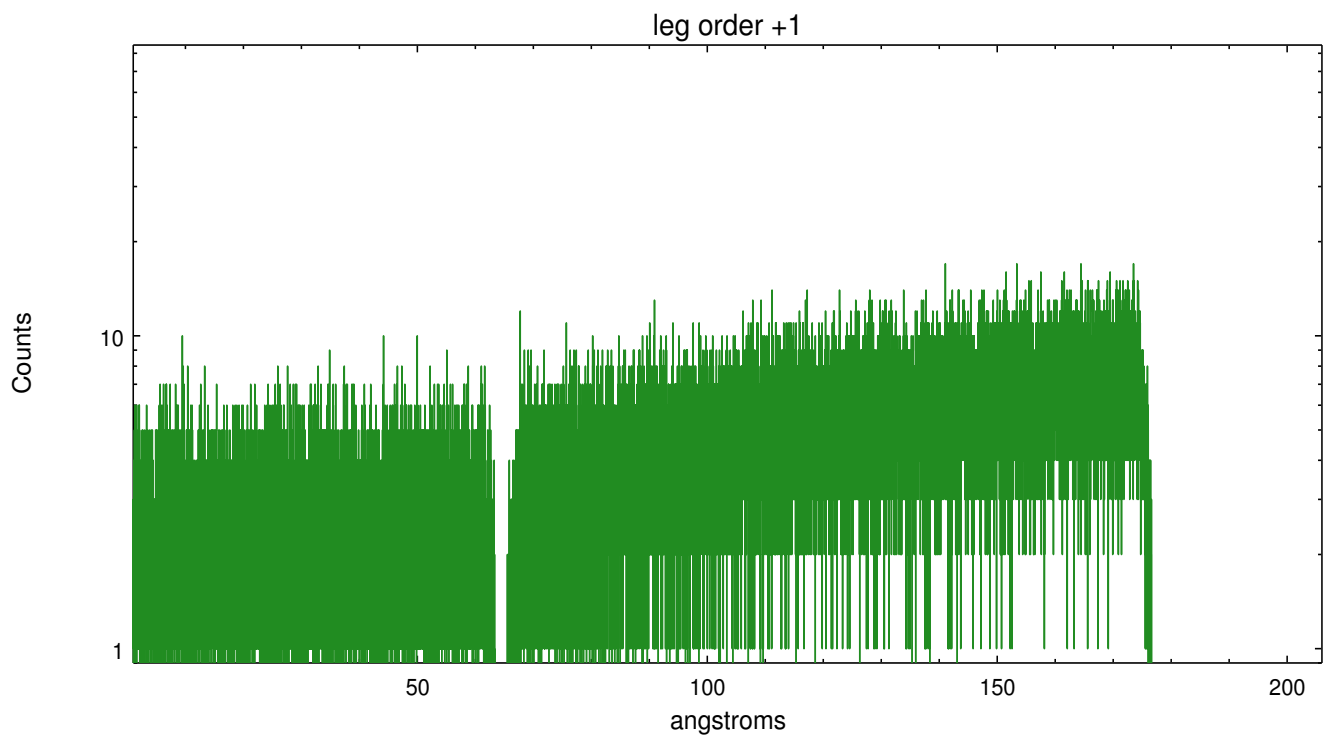
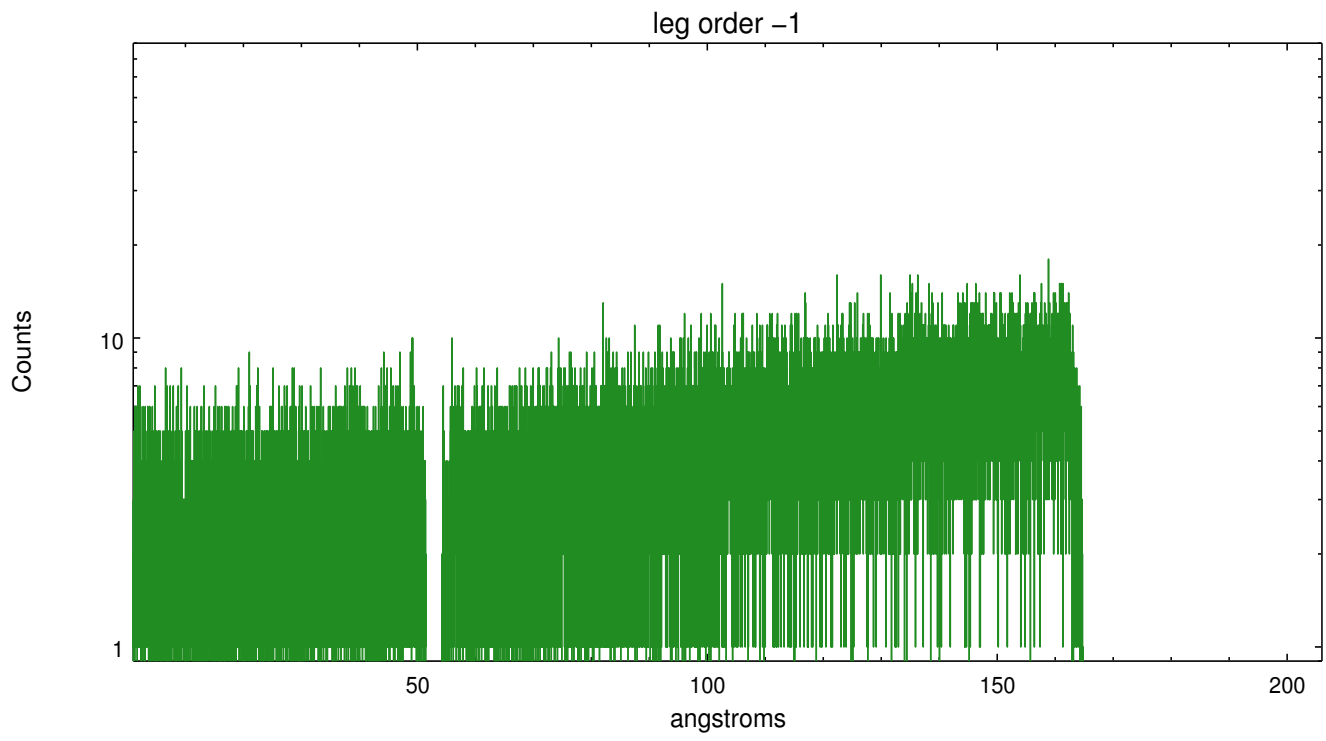


## 3 Gratings

### 3.1 LETG Arm



LETG Zero Order



## A Summary

### A.1 Status

V&V Scientist	Joy Nichols
V&V Date (YYYY-MM-DD)	2012.08.22
V&V Edition	1
V&V Disposition and Status	OK
V&V Charge Time	40.130033279836

### A.2 Comments