

V&V Reference Report

L2 ASCDS Version : 8.4.5

Observation 11708 - L2 Version 2
Chandra X-Ray Center

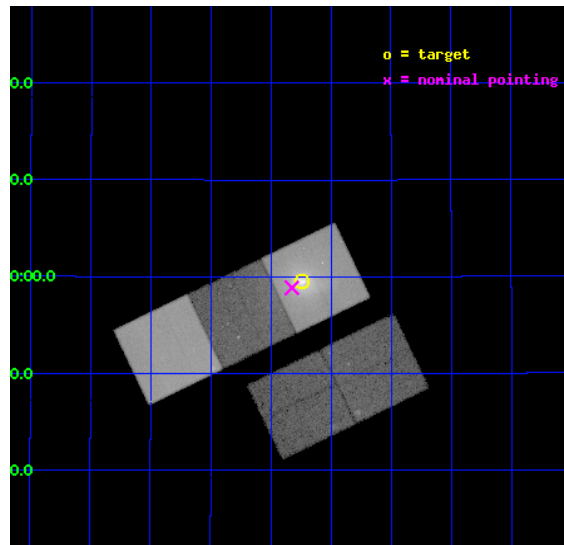
L2 Processing Date : Jun 17 2012

Contents

1	Front	2
2	OBI	3
2.1	OBI	3
2.1.1	Images	3
2.1.2	Bias	3
2.1.3	Parameters	4
2.1.4	Events	4
2.2	Compared Parameters	5
2.3	Aspect	6
2.4	Star Slots	9
2.4.1	Slot 3	9
2.4.2	Slot 4	10
2.4.3	Slot 5	11
2.4.4	Slot 6	12
2.4.5	Slot 7	13
2.5	FID Slots	14
2.5.1	Slot 0	14
2.5.2	Slot 1	15
2.5.3	Slot 2	16
A	Summary	17
A.1	Status	17
A.2	Comments	17

1 Front

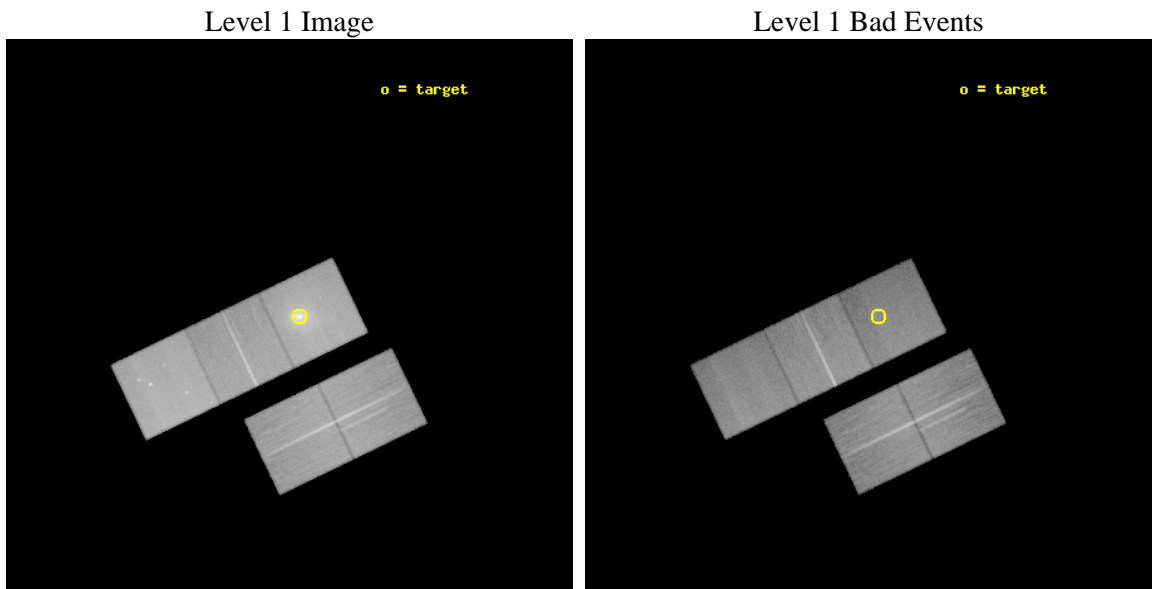
seq_num	800850	Sequence number
obs_id	11708	Observation id
title	Investigating AGN feedback in cool cores detected in Halpha	Propos
observer	Dr Myriam Gitti	Principal investigator
object	Zw 1742.1+3306	Source name
dtcycle	0	
cycle	P	events from which exps? Prim/Second/Both
ra_targ	266.06	Observer's specified target RA [deg]
dec_targ	32.991389	Observer's specified target Dec [deg]
ra_nom	266.08148485767	Nominal RA [deg]
dec_nom	32.980885647519	Nominal Dec [deg]
roll_nom	334.32264899702	Nominal Roll [deg]
revision	2	Processing version of data
ontime	46035.000354052	Sum of GTIs [s]
livetime	45433.519183952	Livetime [s]
ontime2	46031.859363854	Sum of GTIs [s]
ontime3	46028.718552828	Sum of GTIs [s]
ontime5	46035.000354052	Sum of GTIs [s]
ontime6	46031.859393656	Sum of GTIs [s]
ontime7	46035.000354052	Sum of GTIs [s]
l2events	725439	Number of level 2 events



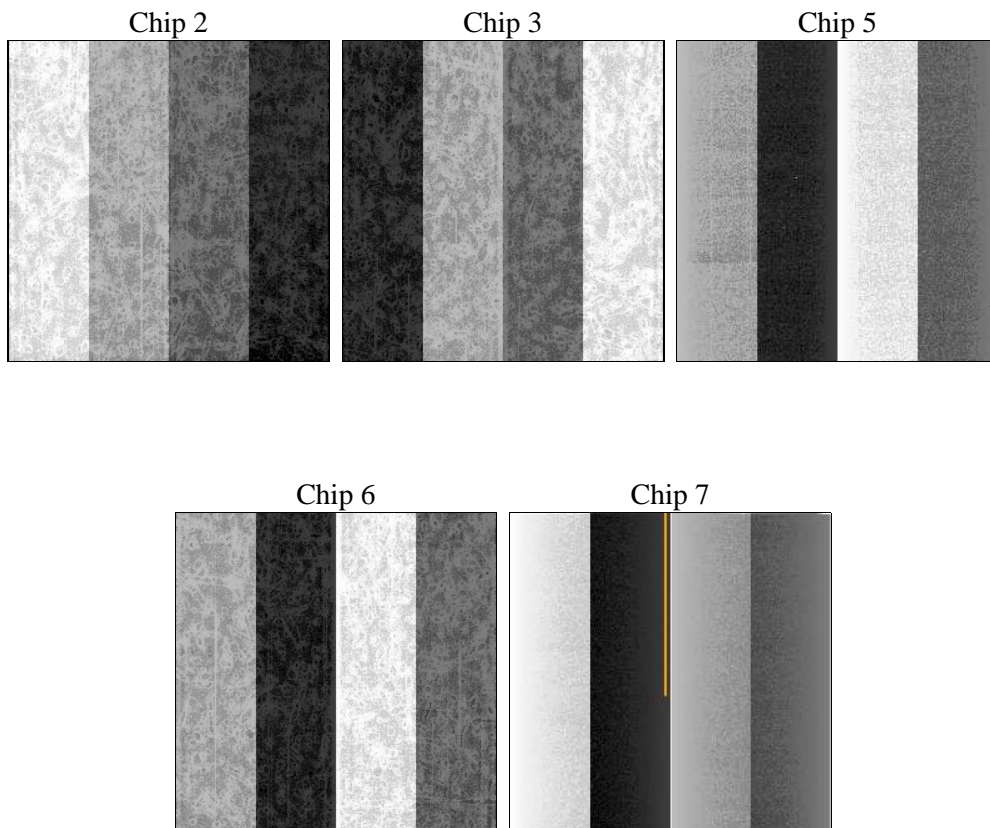
2 OBI

2.1 OBI

2.1.1 Images



2.1.2 Bias



2.1.3 Parameters

obi_num	1	Obi number	sched_exp_time	46000.000000	[s] Scheduled observation exposure time
ascdsver	8.4.5	Processing system revision	ontime	46035.000354052	Sum of GTIs [s]
caldbver	4.4.10	 	ontime2	46031.859363854	Sum of GTIs [s]
date	2012-06-17T07:04:04	Date and time of file creation	ontime3	46028.718552828	Sum of GTIs [s]
revision	2	Processing version of data	ontime5	46035.000354052	Sum of GTIs [s]
			ontime6	46031.859393656	Sum of GTIs [s]
			ontime7	46035.000354052	Sum of GTIs [s]
			l1events	2356865	Number of level 1 events

2.1.4 Events

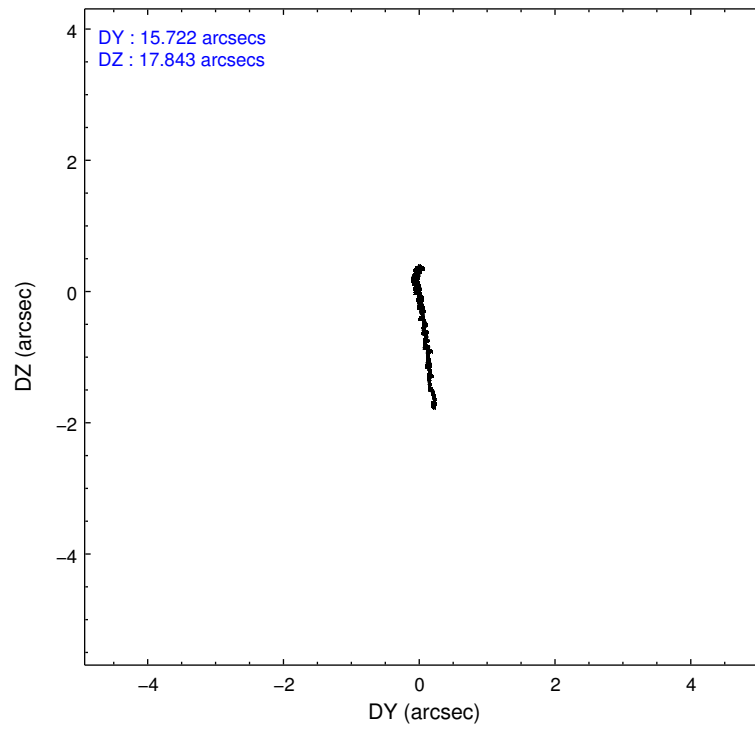
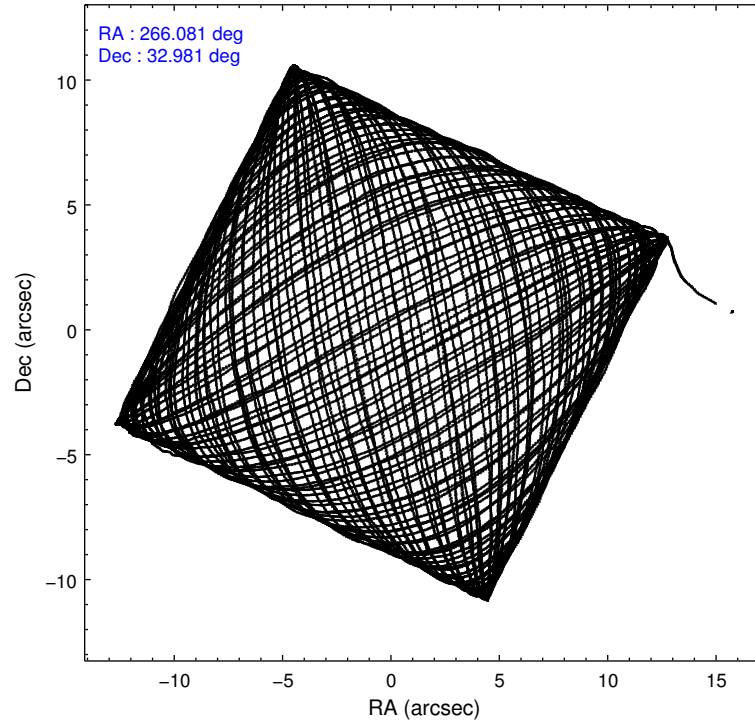
	ccd 2	ccd 3	ccd 5	ccd 6	ccd 7
level 1 events	390102	381696	566020	410731	608316
rejected events	350142	343087	288122	361472	252322
rejected %	89%	89%	50%	88%	41%

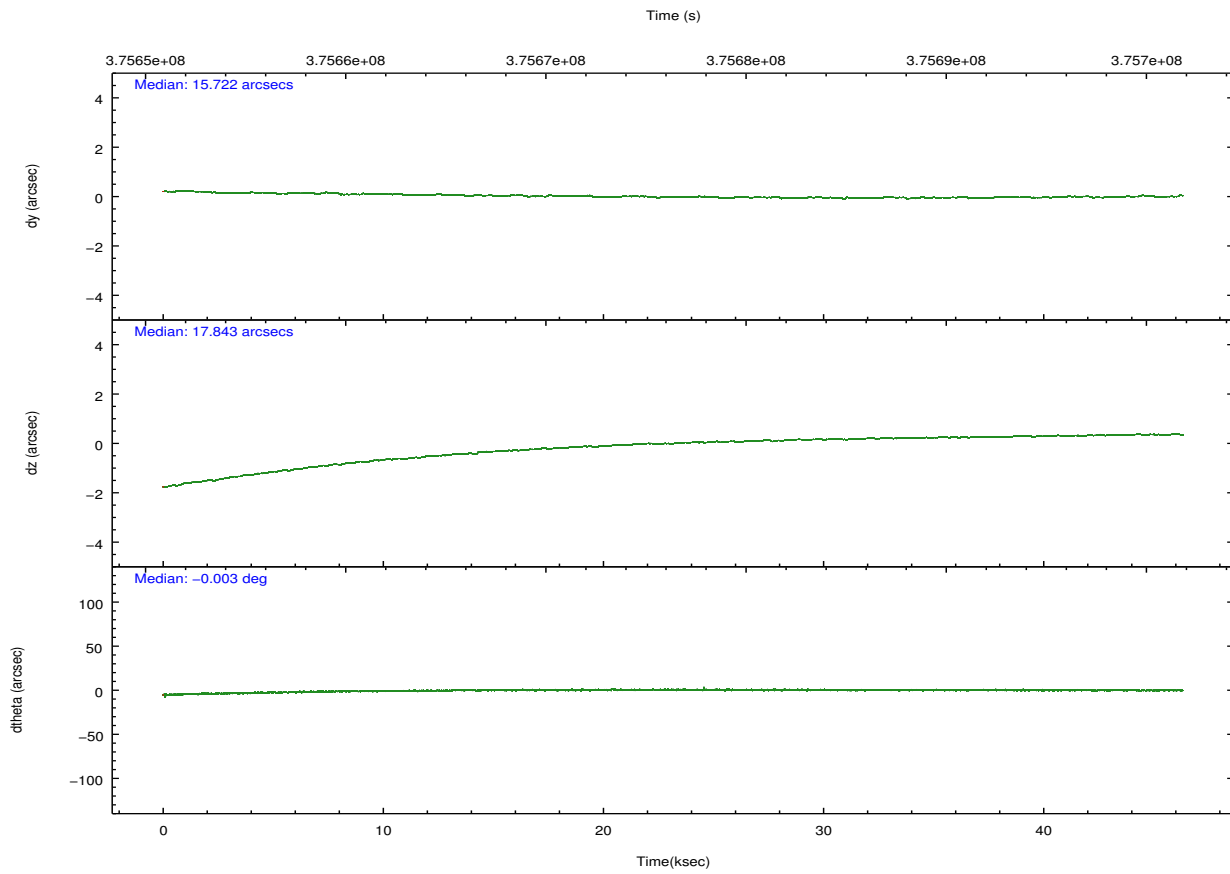
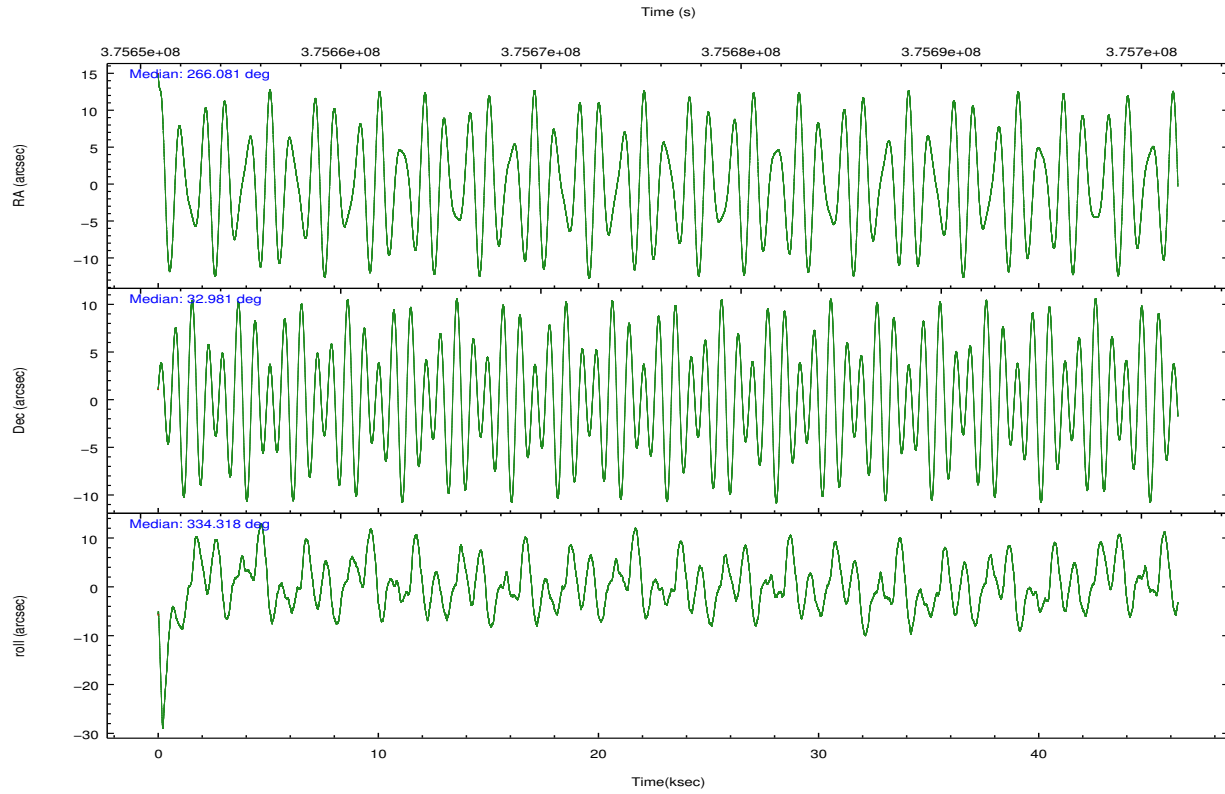
	ccd 2	ccd 3	ccd 5	ccd 6	ccd 7
grade 0 events	14636	14102	22827	20438	64044
	3%	3%	4%	4%	10%
grade 1 events	264	237	1106	230	679
	0%	0%	0%	0%	0%
grade 2 events	9497	8250	84635	10219	82224
	2%	2%	14%	2%	13%
grade 3 events	4128	4303	11287	4666	35676
	1%	1%	1%	1%	5%
grade 4 events	4316	4248	10865	4671	35629
	1%	1%	1%	1%	5%
grade 5 events	13741	16209	43853	16521	48907
	3%	4%	7%	4%	8%
grade 6 events	7386	7707	148296	9267	138462
	1%	2%	26%	2%	22%
grade 7 events	336134	326640	243151	344719	202695
	86%	85%	42%	83%	33%

2.2 Compared Parameters

Parameter	Planned	Actual	Parameter	Planned	Actual
Instrument	ACIS	ACIS	Obspar format version number	7	7
Detector	ACIS-23567	ACIS-23567	Obspar file type	PREDICTED	ACTUAL
Grating	NONE	NONE	Obspar update status	NONE	UPDATED
Data mode	VFAINT	VFAINT	Number of optional ACIS chips dropped	0	0
Observation mode	POINTING	POINTING	On-chip summing requested	N	N
[deg] Pointing RA	266.049011	266.0814848576686	Subarray requested	NONE	NONE
[deg] Pointing Dec	32.978450	32.98088564751856	Alternating exposures requested	N	N
[deg] Pointing Roll	334.183694	334.322648997021	[s] Primary exposure time	0.000000	3.1
[mm] SIM focus pos	-0.684267	-0.6828225247311905			
[mm] SIM defocus	0	0.001444936568705701			
[mm] SIM translation stage pos	-190.132523	-190.1400660498719			
[mm] SIM translation stage offset	0	0.00754346686406393			
[s] Observation start time (MET)	375653507.184000	375652508.64576			
Observation start date	2009-11-26T20:10:41	2009-11-26T19:55:08			
[s] Observation end time (MET)	375699507.184000	375700506.83568			
Observation end date	2009-11-27T08:57:21	2009-11-27T09:15:06			
Read mode	TIMED	TIMED			

2.3 Aspect



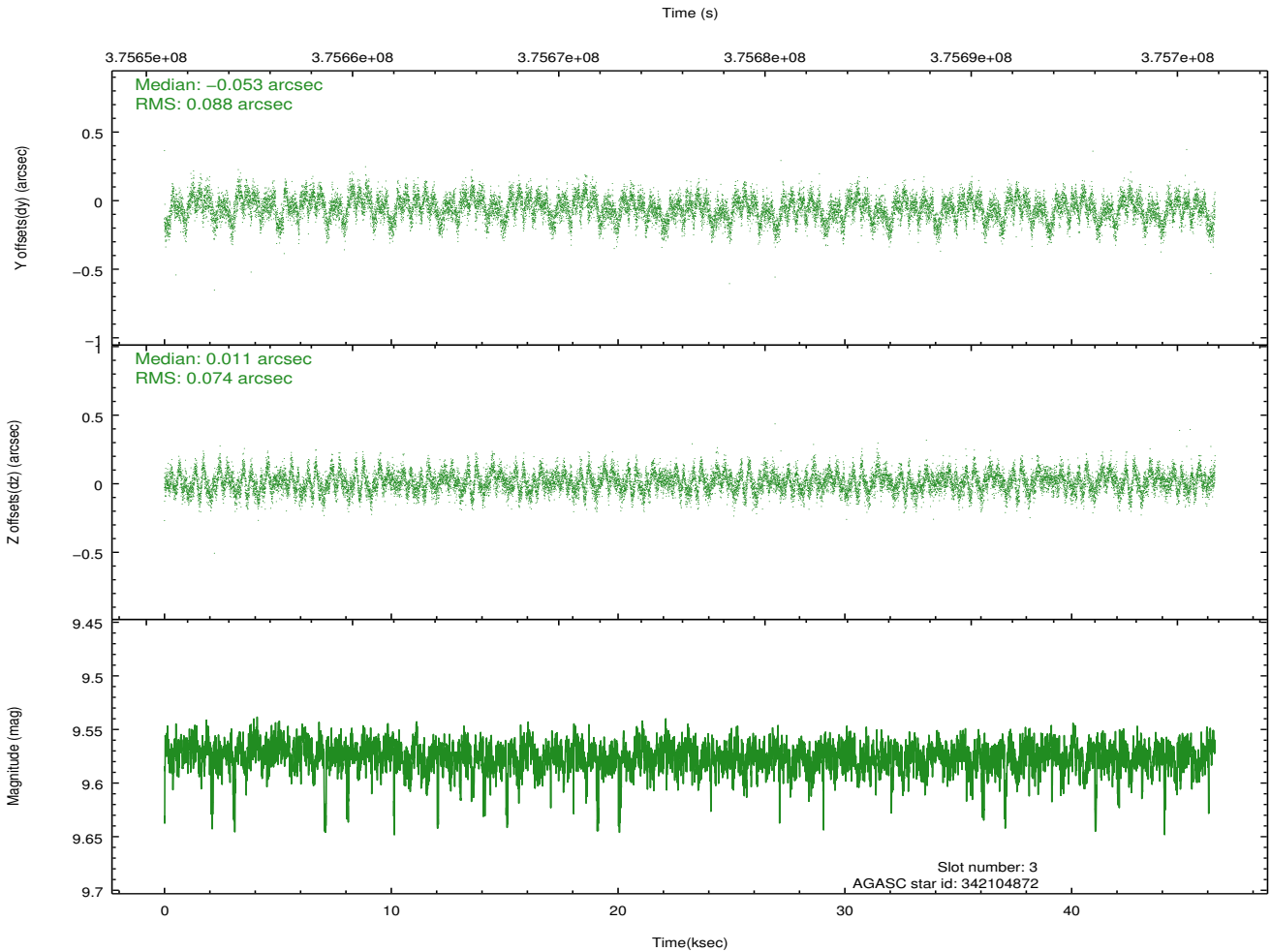
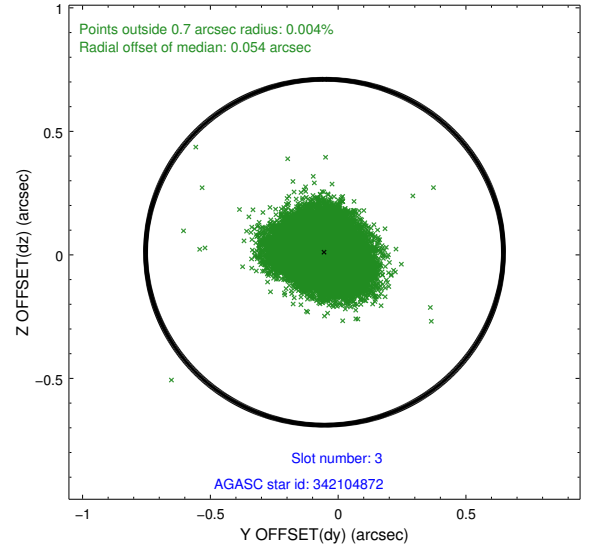
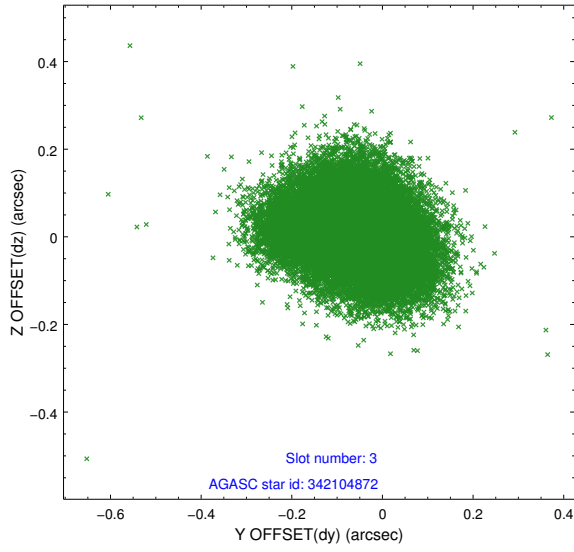


Slot Statistics

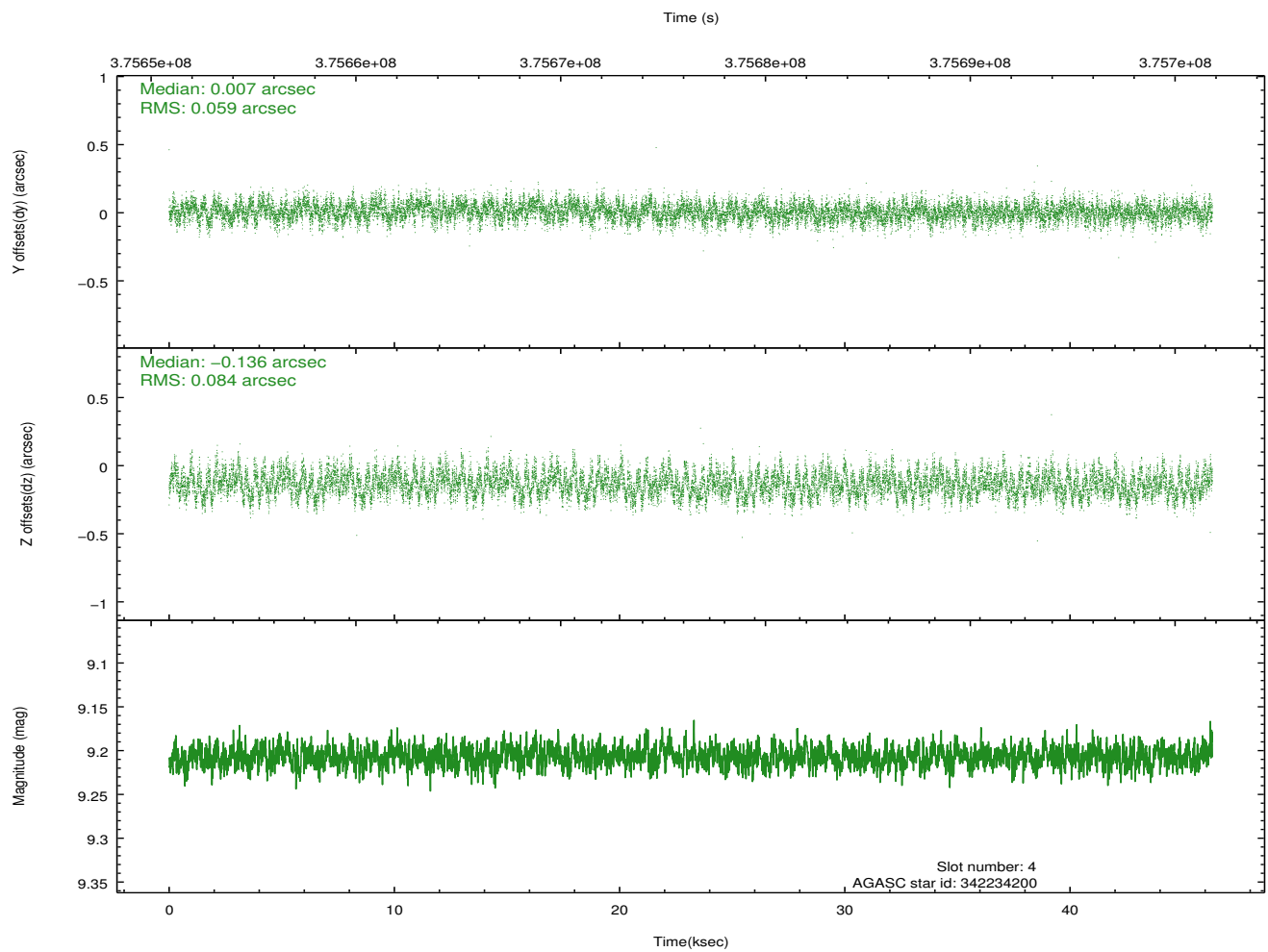
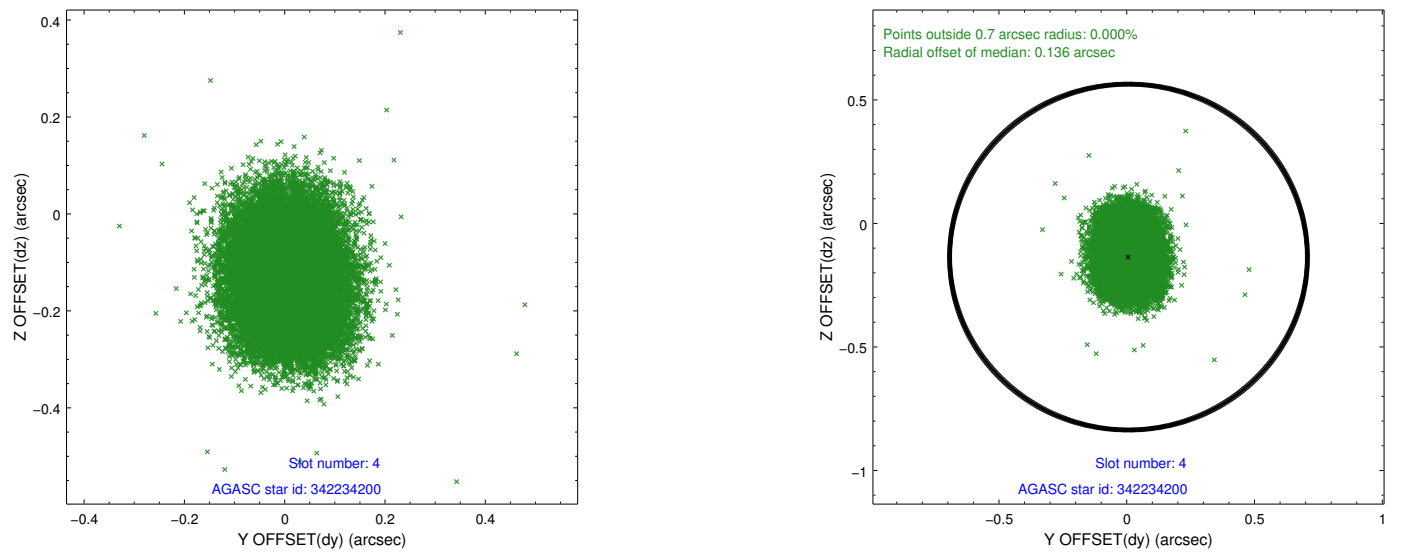
slot	status	id	mag	n_pts	med_dy	med_dz	dr1	dr2	ra	dec	mean_y	mean_z
0	FID	ACIS-S-2	6.86	11299	-0.064	-0.033	0.017	0.042	0.000000	0.000000	-768.84	-1739.07
1	FID	ACIS-S-4	6.95	11297	0.143	0.039	0.012	0.022	0.000000	0.000000	2144.69	169.41
2	FID	ACIS-S-5	6.98	11299	-0.110	0.002	0.017	0.041	0.000000	0.000000	-1821.69	163.12
3	GUIDE	342104872	9.58	22563	-0.053	0.011	0.123	0.193	265.449151	33.297364	-2126.78	252.02
4	GUIDE	342234200	9.21	22575	0.007	-0.136	0.110	0.176	265.645499	32.905710	-984.51	-764.88
5	GUIDE	342239504	9.32	22572	-0.086	-0.105	0.109	0.178	266.456389	32.826546	1346.89	46.50
6	GUIDE	342239632	9.58	22543	-0.065	0.134	0.112	0.179	266.572898	32.738712	1802.73	-82.32
7	GUIDE	342230104	10.21	22501	0.209	0.099	0.182	0.299	267.027422	33.240348	2235.88	2144.45

2.4 Star Slots

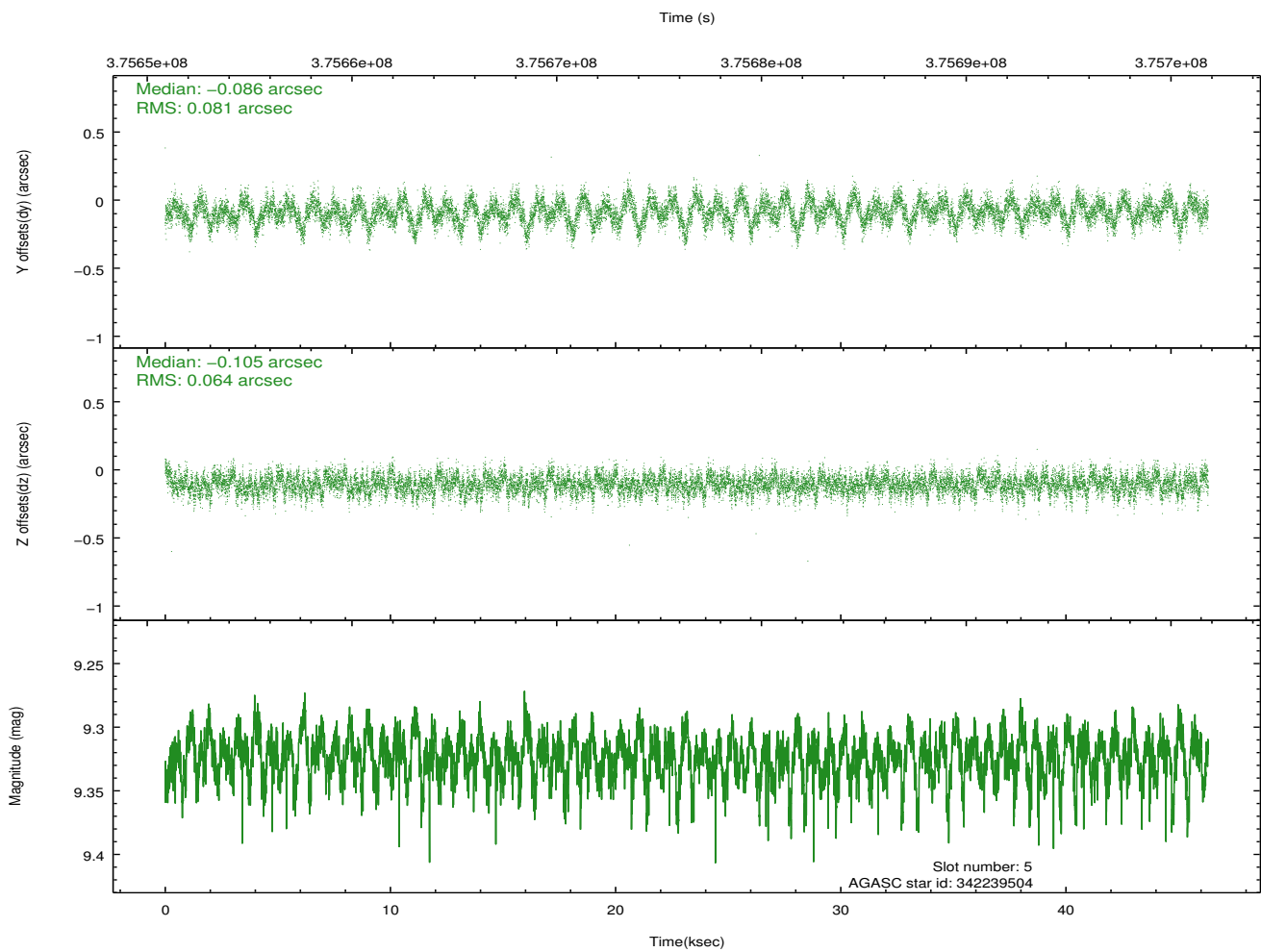
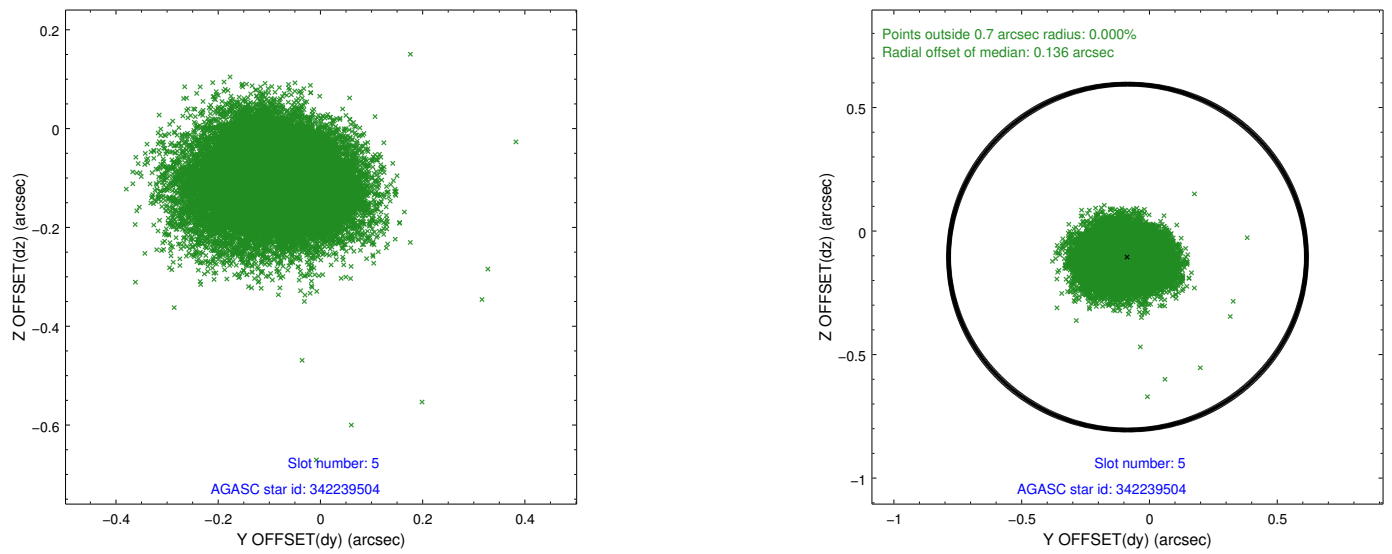
2.4.1 Slot 3



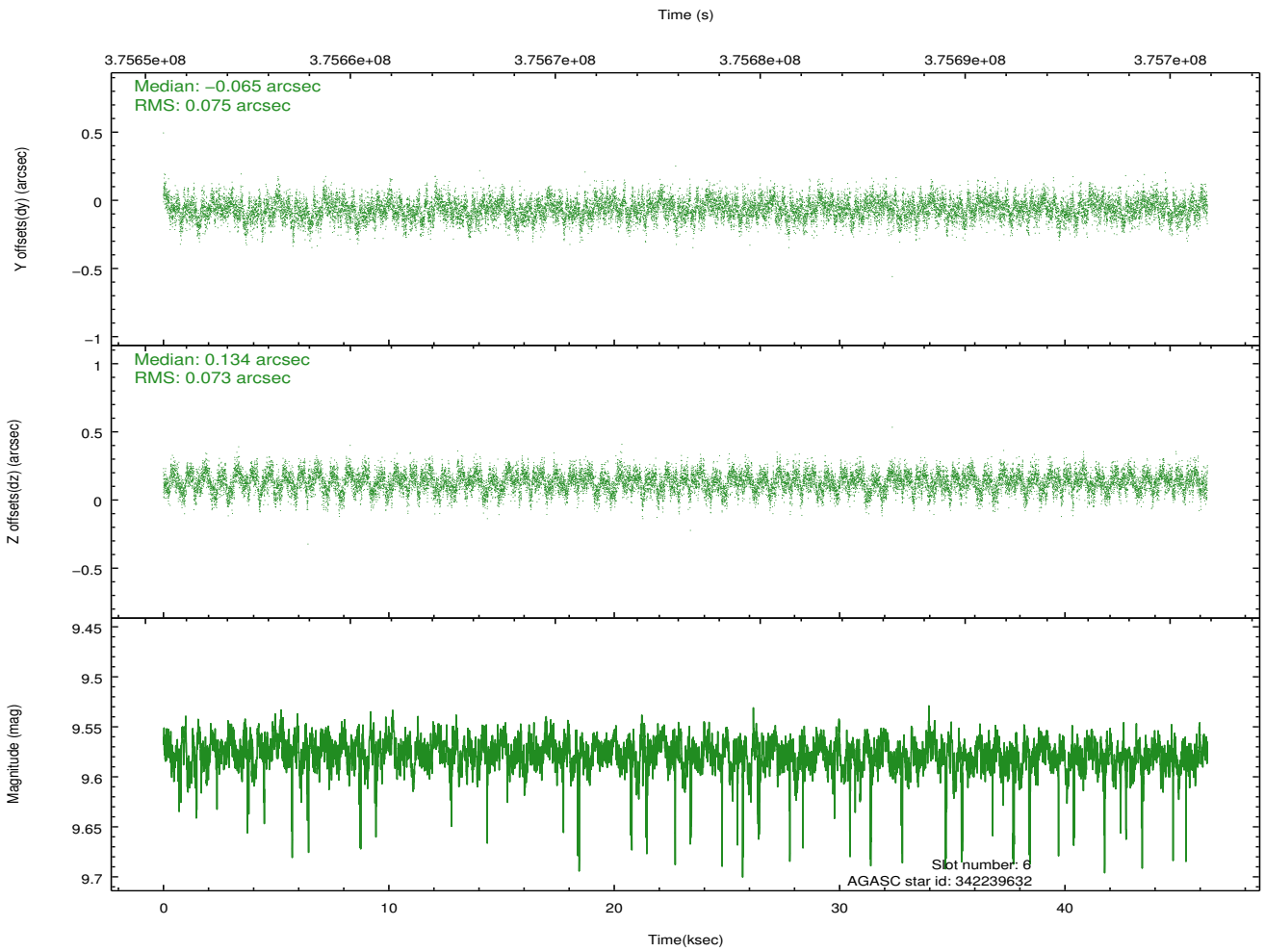
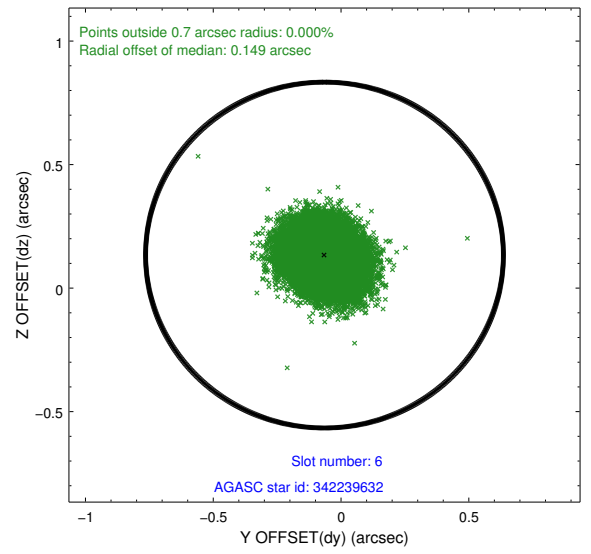
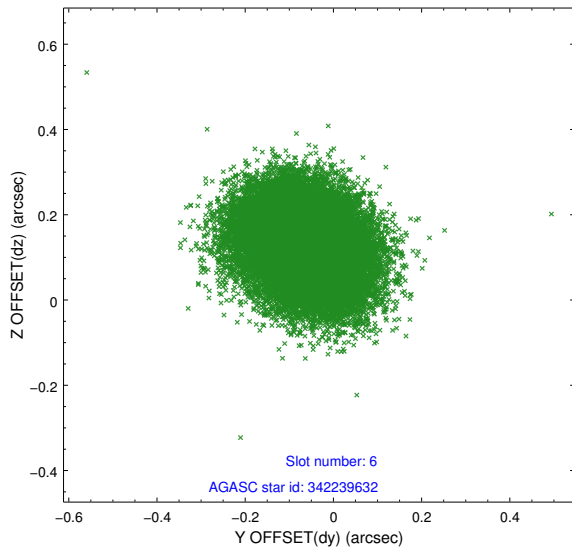
2.4.2 Slot 4



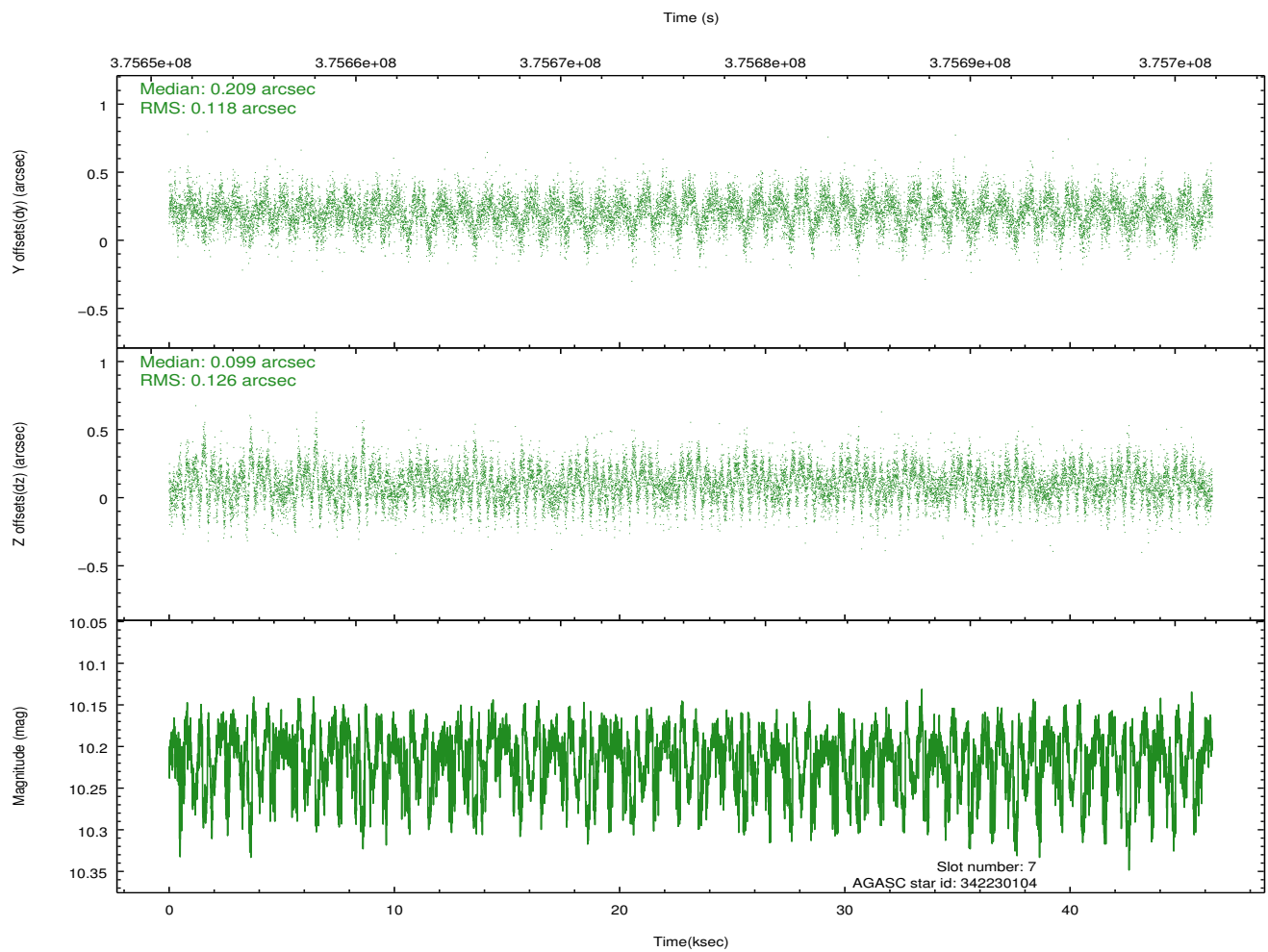
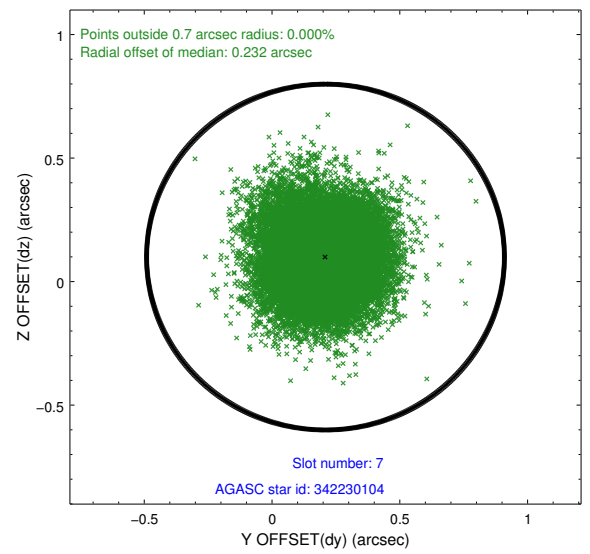
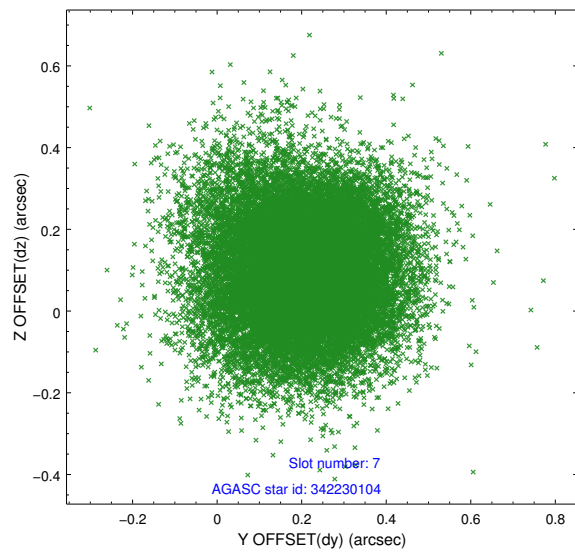
2.4.3 Slot 5



2.4.4 Slot 6

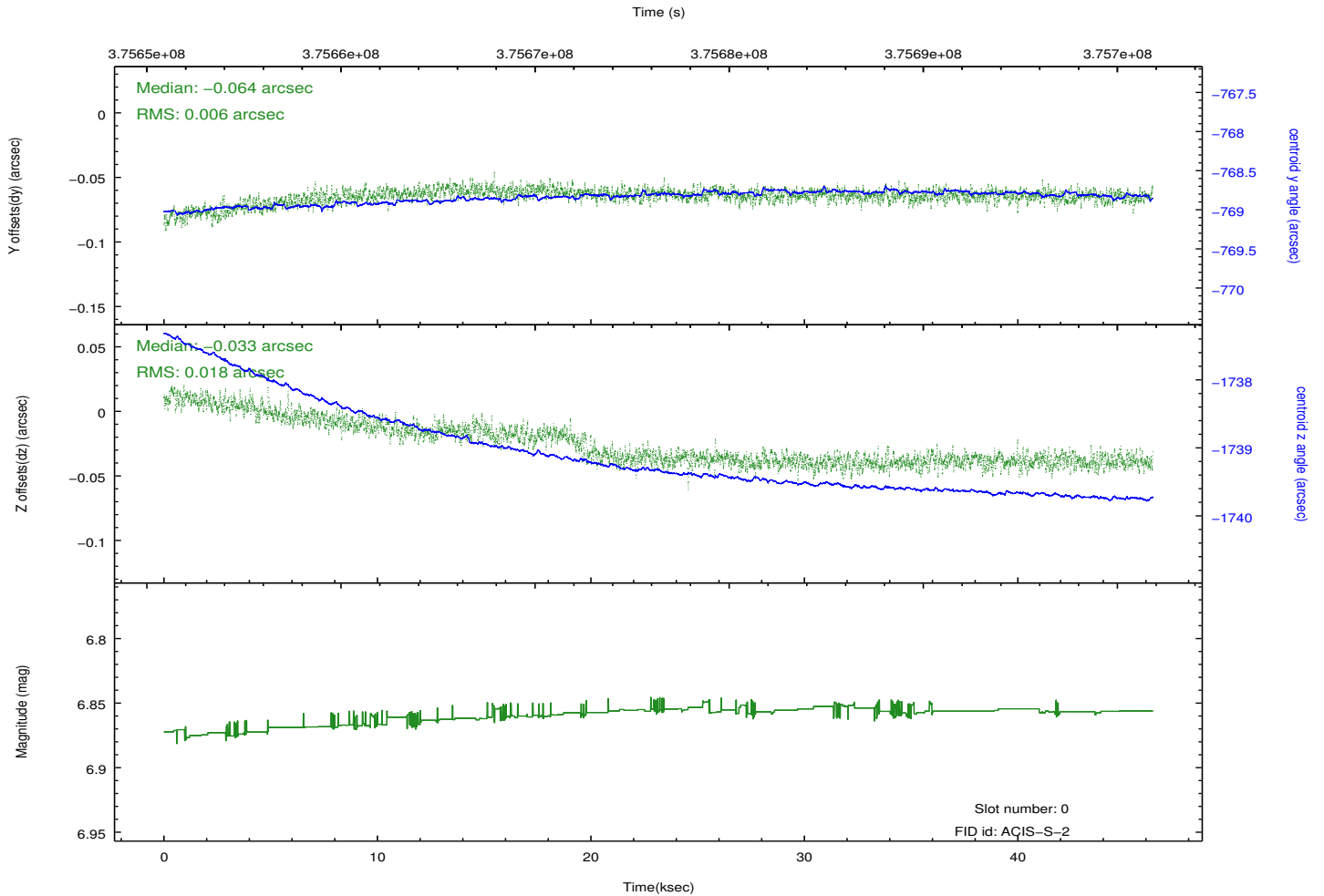
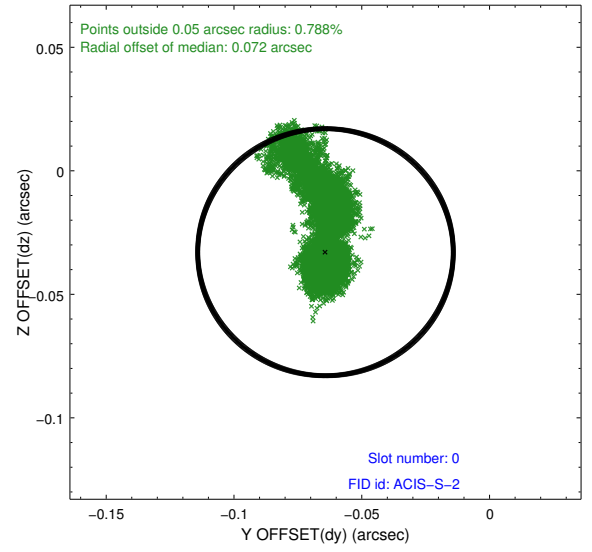
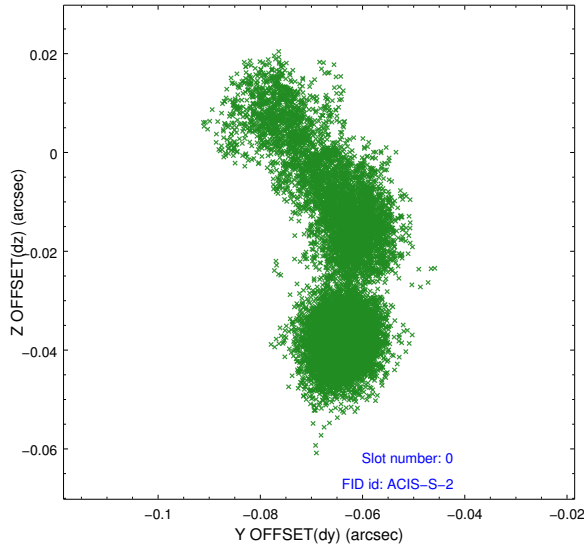


2.4.5 Slot 7

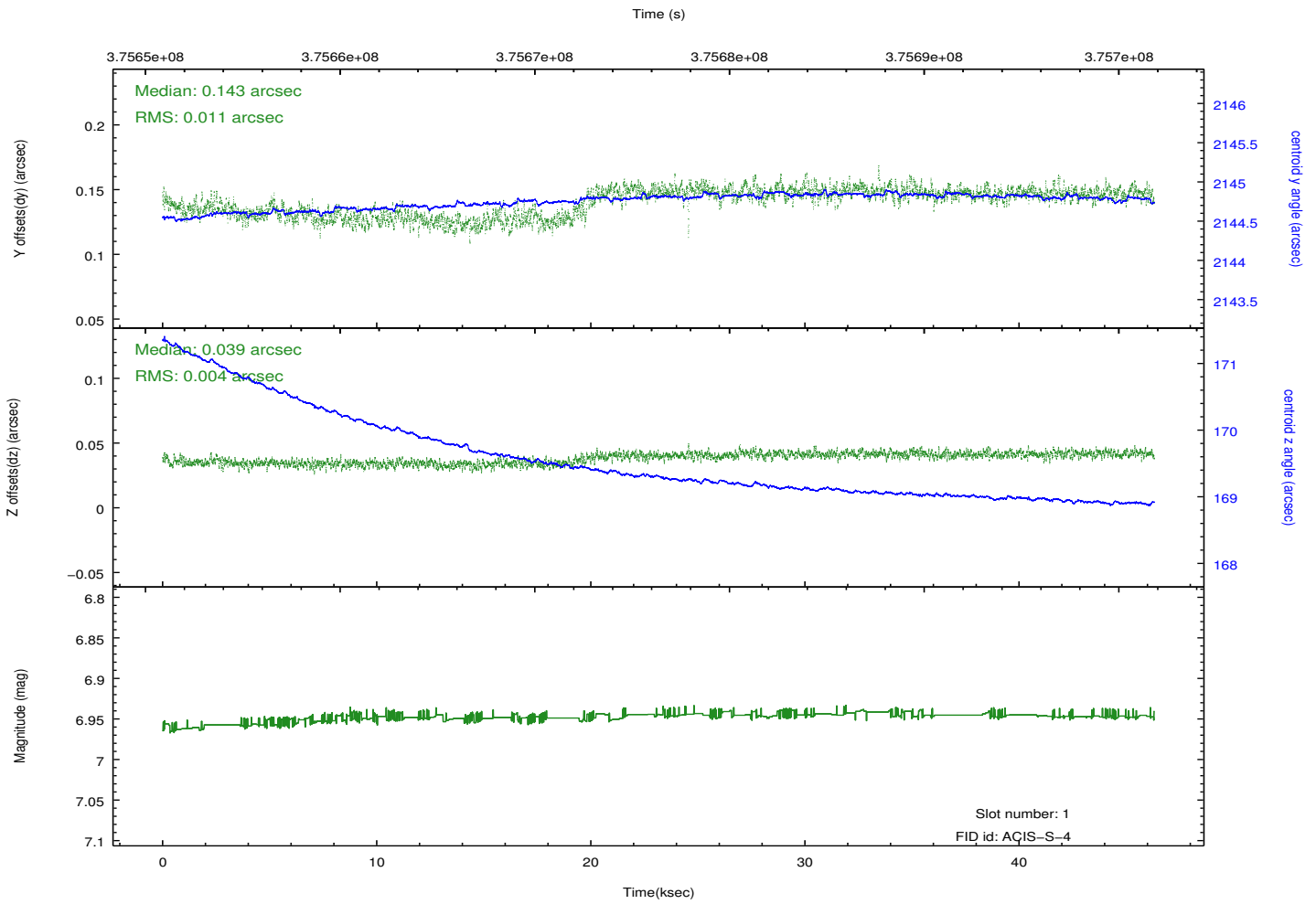
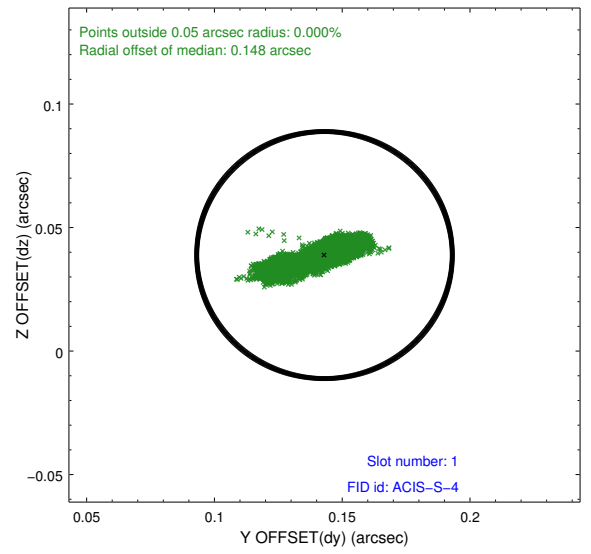
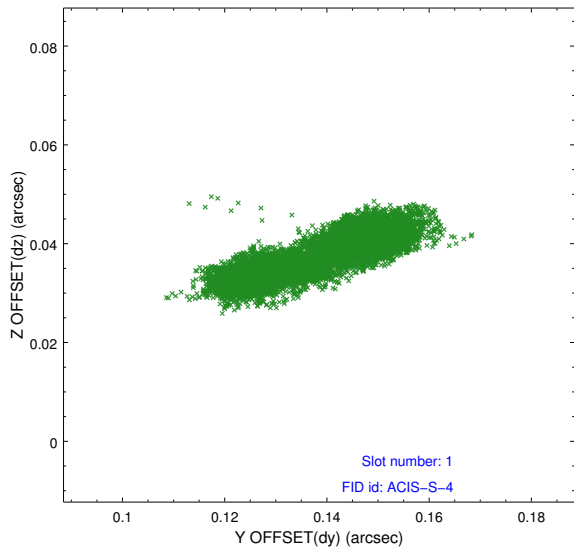


2.5 FID Slots

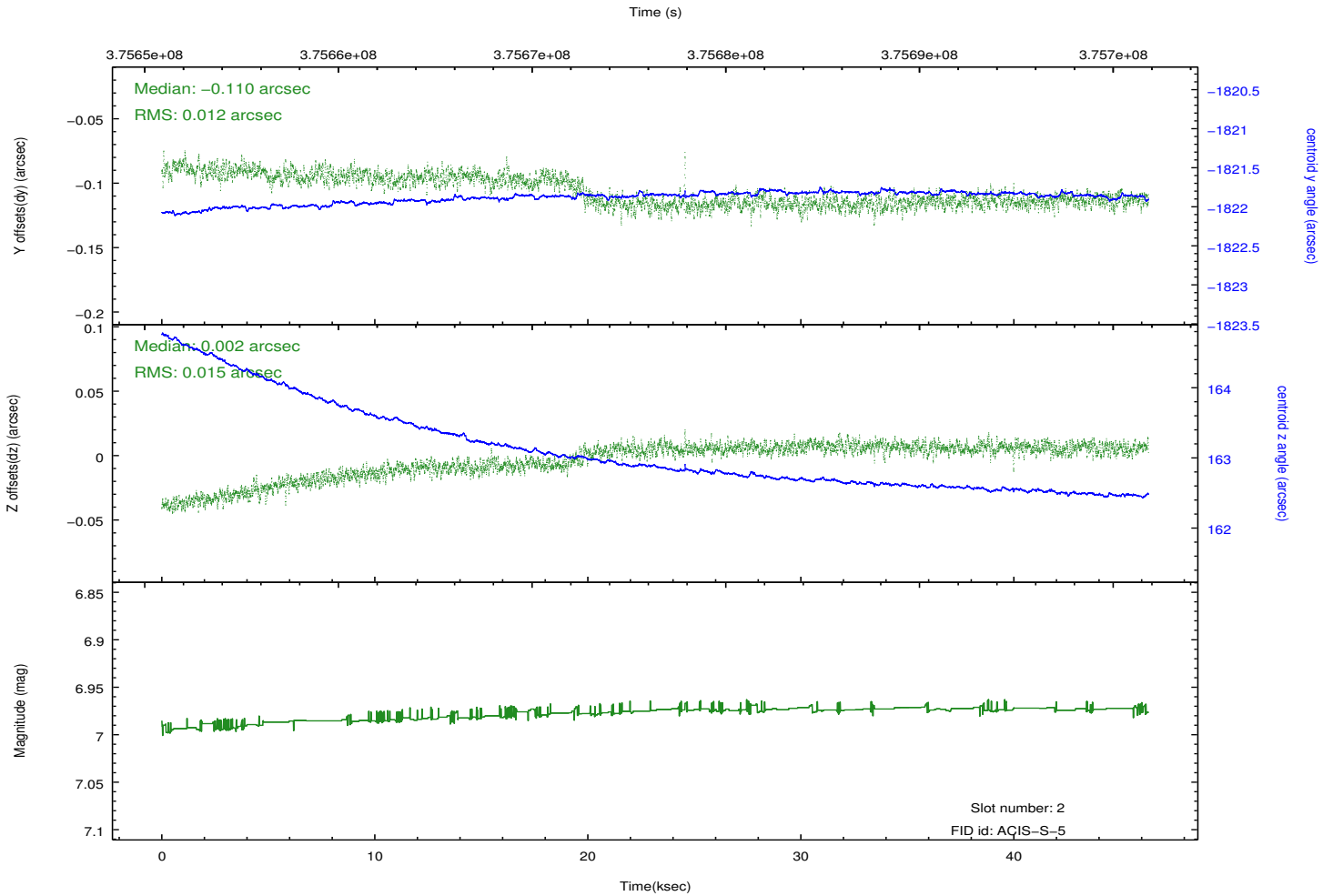
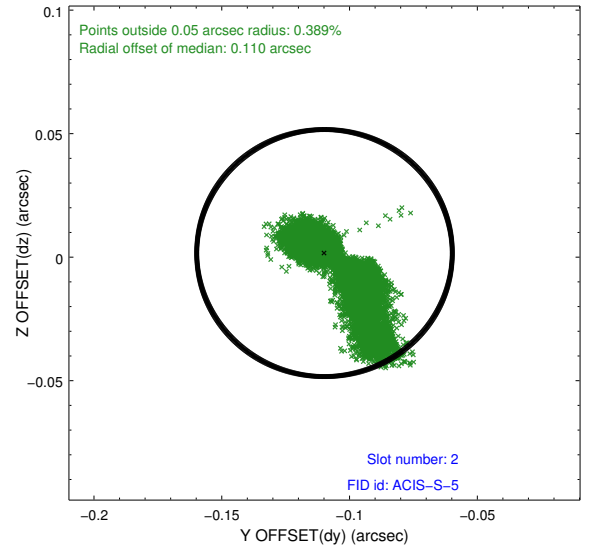
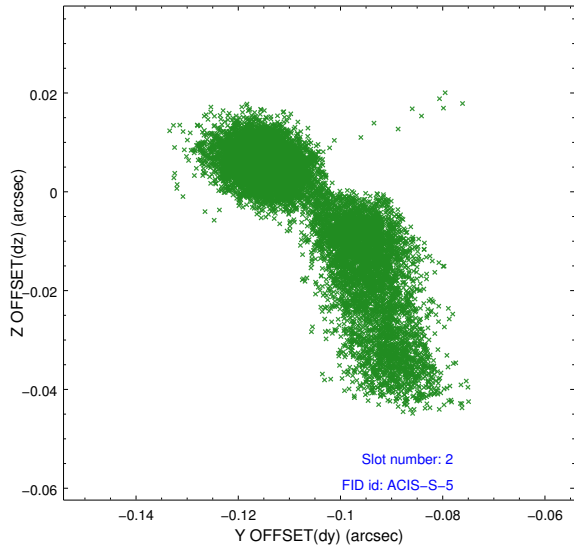
2.5.1 Slot 0



2.5.2 Slot 1



2.5.3 Slot 2



A Summary

A.1 Status

V&V Scientist	Jen Lauer
V&V Date (YYYY-MM-DD)	2012.06.21
V&V Edition	1
V&V Disposition and Status	OK
V&V Charge Time	46.035000354052

A.2 Comments

Joint proposal with NRAO.