

V&V Reference Report

L2 ASCDS Version : 8.4.5

Observation 11988 - L2 Version 2
Chandra X-Ray Center

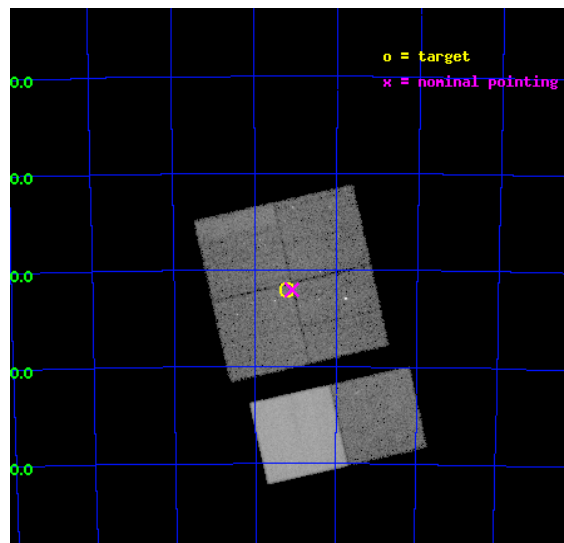
L2 Processing Date : Jun 24 2012

Contents

1	Front	2
2	OBI	3
2.1	OBI	3
2.1.1	Images	3
2.1.2	Bias	3
2.1.3	Parameters	4
2.1.4	Events	4
2.2	Compared Parameters	5
2.3	Aspect	6
2.4	Star Slots	9
2.4.1	Slot 3	9
2.4.2	Slot 4	10
2.4.3	Slot 5	11
2.4.4	Slot 6	12
2.4.5	Slot 7	13
2.5	FID Slots	14
2.5.1	Slot 0	14
2.5.2	Slot 1	15
2.5.3	Slot 2	16
A	Summary	17
A.1	Status	17
A.2	Comments	17

1 Front

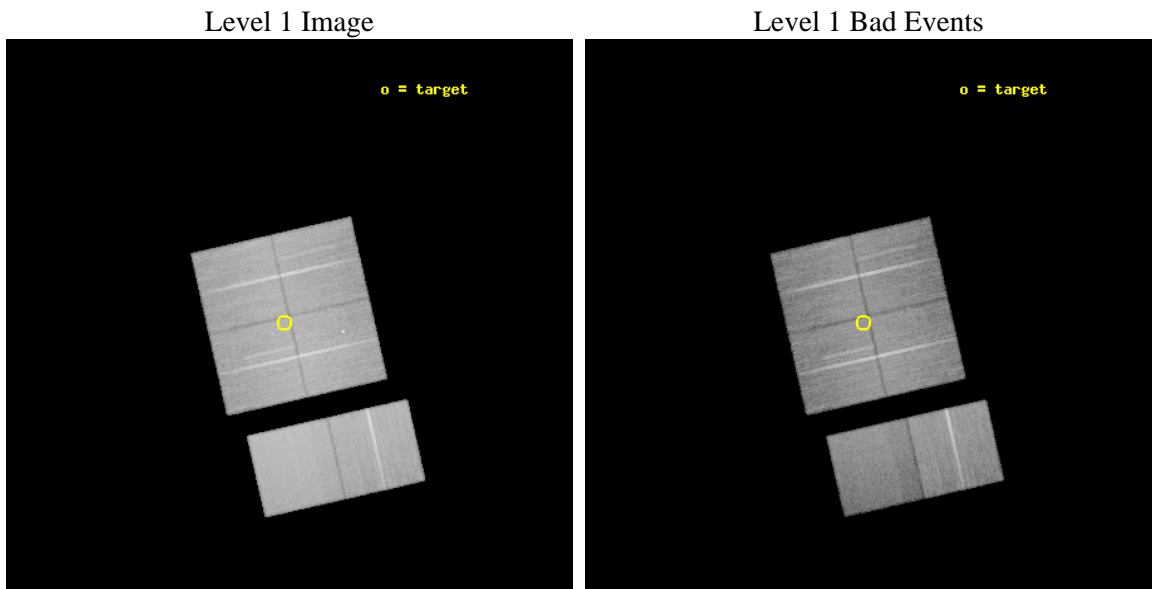
seq_num	200617	Sequence number
obs_id	11988	Observation id
title	Cosmic archaeology with Chandra: from a supergiant shell to young stellar objects in NGC 602	Proposal title
observer	Dr. Lidia Oskinova	Principal investigator
object	NGC 602	Source name
dtcycle	0	
cycle	P	events from which exps? Prim/Second/Both
ra_targ	22.301667	Observer's specified target RA [deg]
dec_targ	-73.533806	Observer's specified target Dec [deg]
ra_nom	22.27320781277	Nominal RA [deg]
dec_nom	-73.534432434817	Nominal Dec [deg]
roll_nom	167.18138561099	Nominal Roll [deg]
revision	2	Processing version of data
ontime	33548.799875081	Sum of GTIs [s]
livetime	33123.9847704	Livetime [s]
ontime0	33548.799875081	Sum of GTIs [s]
ontime1	33548.799875081	Sum of GTIs [s]
ontime2	33548.799875081	Sum of GTIs [s]
ontime3	33548.799875081	Sum of GTIs [s]
ontime6	33548.799875081	Sum of GTIs [s]
ontime7	33548.799875081	Sum of GTIs [s]
l2events	251272	Number of level 2 events



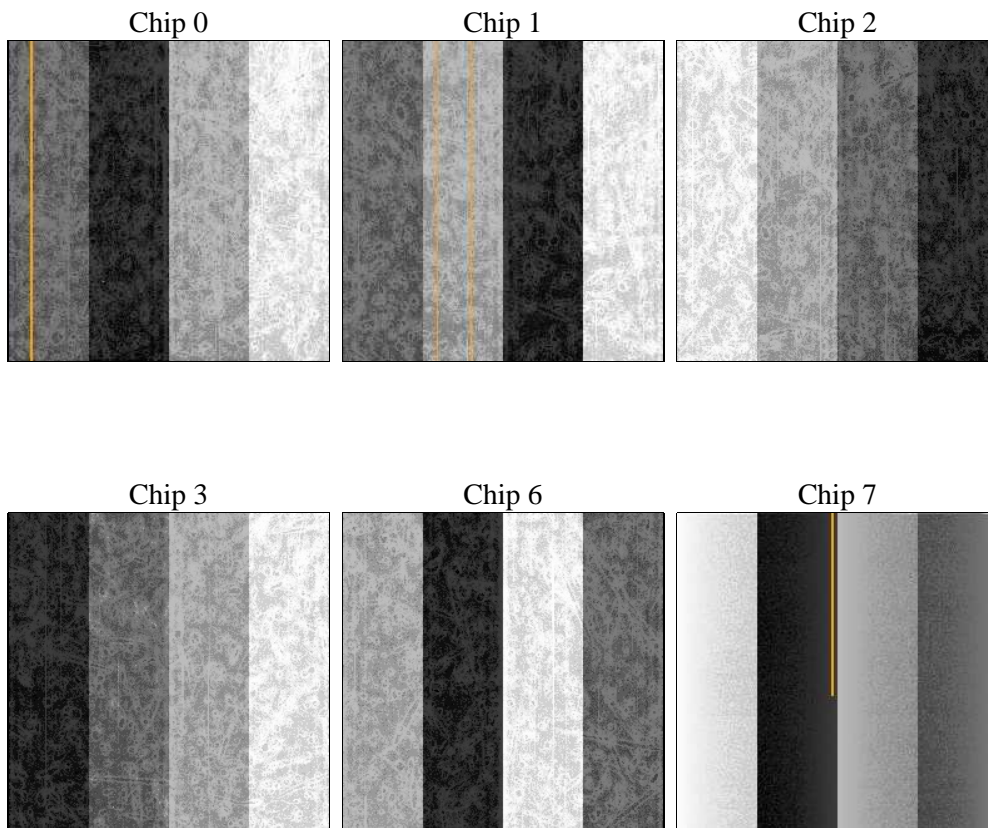
2 OBI

2.1 OBI

2.1.1 Images



2.1.2 Bias



2.1.3 Parameters

obi_num	0	Obi number	sched_exp_time	33500.000000	[s] Scheduled observation exposure time
ascdsver	8.4.5	Processing system revision	ontime	33548.799875081	Sum of GTIs [s]
caldbver	4.4.10	 	ontime0	33548.799875081	Sum of GTIs [s]
date	2012-06-24T21:58:54	Date and time of file creation	ontime1	33548.799875081	Sum of GTIs [s]
revision	2	Processing version of data	ontime2	33548.799875081	Sum of GTIs [s]
			ontime3	33548.799875081	Sum of GTIs [s]
			ontime6	33548.799875081	Sum of GTIs [s]
			ontime7	33548.799875081	Sum of GTIs [s]
			l1events	1545450	Number of level 1 events

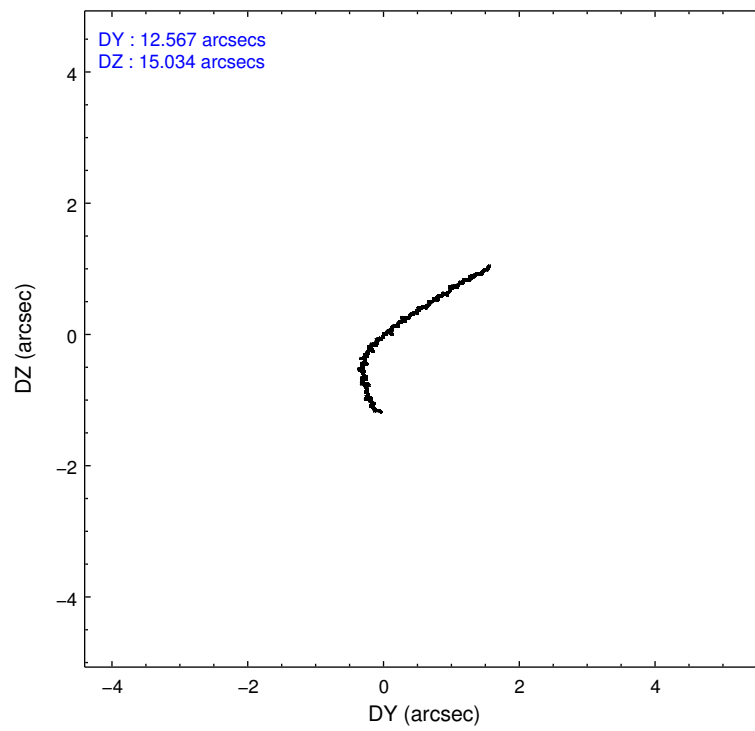
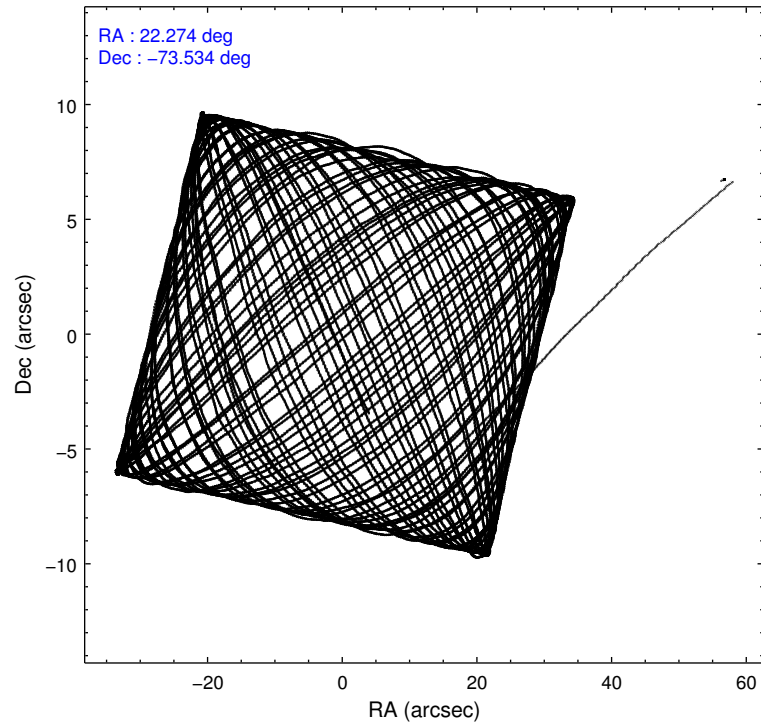
2.1.4 Events

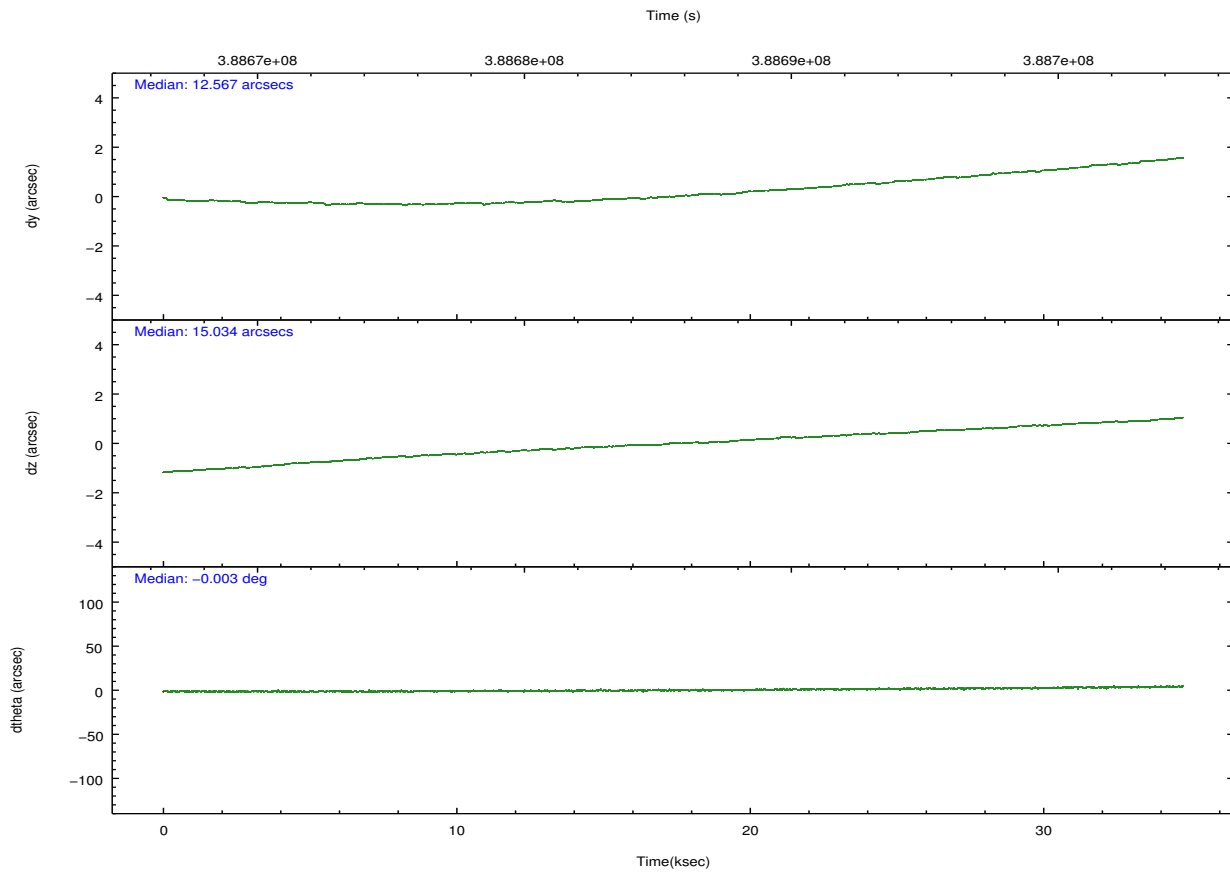
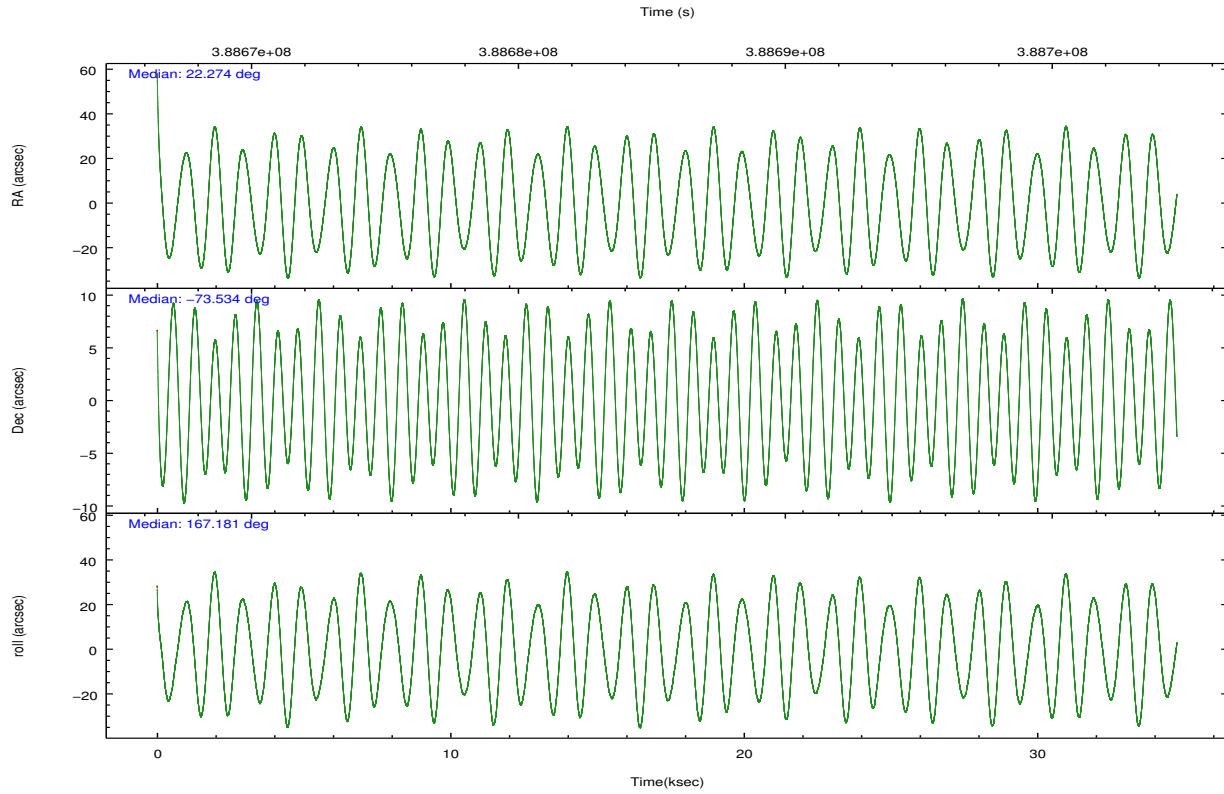
	ccd 0	ccd 1	ccd 2	ccd 3	ccd 6	ccd 7		ccd 0	ccd 1	ccd 2	ccd 3	ccd 6	ccd 7
level 1 events	229382	237166	259529	246640	267124	305609	grade 0 events	9630	10856	11111	9135	9808	12574
rejected events	202170	206923	230789	220832	238718	167989		4%	4%	4%	3%	3%	4%
rejected %	88%	87%	88%	89%	89%	54%	grade 1 events	140	121	165	162	130	384
								0%	0%	0%	0%	0%	0%
							grade 2 events	6603	7139	6727	5639	6344	27641
								2%	3%	2%	2%	2%	9%
							grade 3 events	2946	3111	2853	2910	2962	12296
								1%	1%	1%	1%	1%	4%
							grade 4 events	2796	3036	2866	2824	3045	12134
								1%	1%	1%	1%	1%	3%
							grade 5 events	9921	10676	9739	11195	11437	32301
								4%	4%	3%	4%	4%	10%
							grade 6 events	5240	6102	5185	5301	6248	72982
								2%	2%	1%	2%	2%	23%
							grade 7 events	192106	196125	220883	209474	227150	135297
								83%	82%	85%	84%	85%	44%

2.2 Compared Parameters

Parameter	Planned	Actual	Parameter	Planned	Actual
Instrument	ACIS	ACIS	Obspar format version number	7	7
Detector	ACIS-012367	ACIS-012367	Obspar file type	PREDICTED	ACTUAL
Grating	NONE	NONE	Obspar update status	NONE	UPDATED
Data mode	FAINT	FAINT	CCD I0 on	Y	Y
Observation mode	POINTING	POINTING	CCD I1 on	Y	Y
[deg] Pointing RA	22.365768	22.27320781277001	CCD I2 on	Y	Y
[deg] Pointing Dec	-73.526187	-73.53443243481699	CCD I3 on	Y	Y
[deg] Pointing Roll	167.061468	167.1813856109873	CCD S0 on	N	N
[mm] SIM focus pos	-0.782348	-0.7809083437167272	CCD S1 on	N	N
[mm] SIM defocus	0	0.001439871863259334	CCD S2 on	O1	Y
[mm] SIM translation stage pos	-233.592463	-233.5874344608287	CCD S3 on	Y	Y
[mm] SIM translation stage offset	0	-0.005018542100998502	CCD S4 on	N	N
[s] Observation start time (MET)	388669436.184000	388667338.66762	CCD S5 on	N	N
Observation start date	2010-04-26T11:42:50	2010-04-26T11:08:58	Number of optional ACIS chips dropped	0	0
[s] Observation end time (MET)	388702936.184000	388703707.71947	On-chip summing requested	N	N
Observation end date	2010-04-26T21:01:10	2010-04-26T21:15:07	Subarray requested	NONE	NONE
Read mode	TIMED	TIMED	Alternating exposures requested	N	N
			[s] Primary exposure time	0.000000	3.2

2.3 Aspect



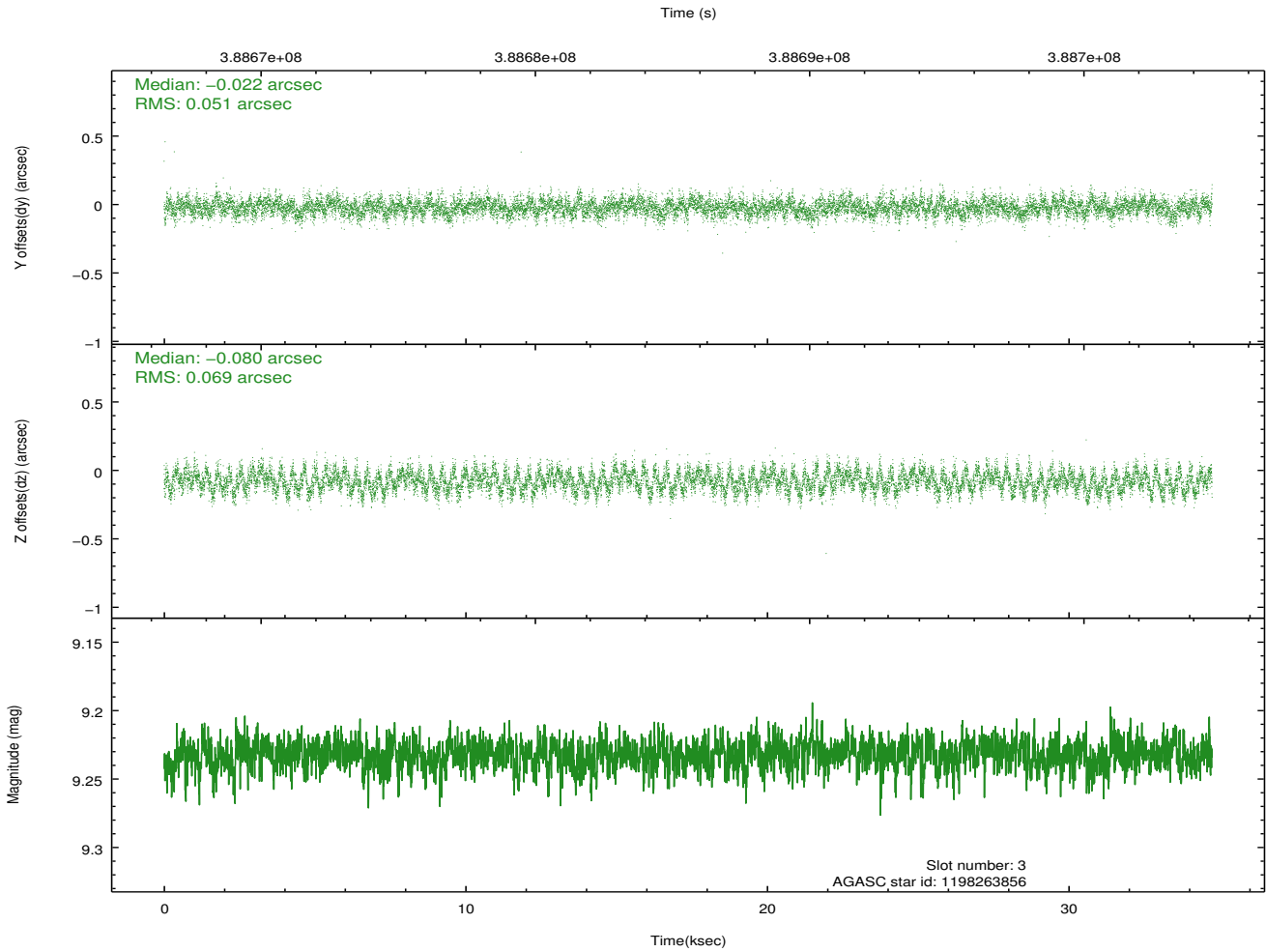
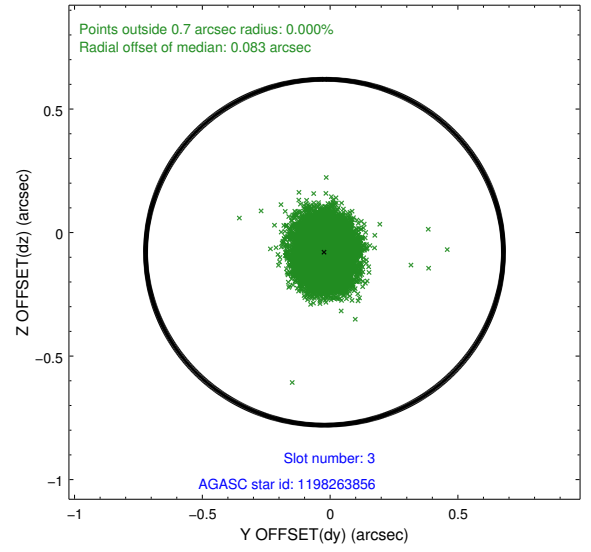
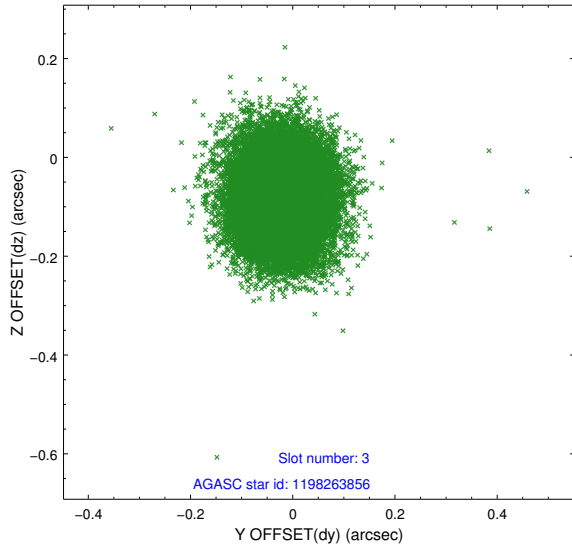


Slot Statistics

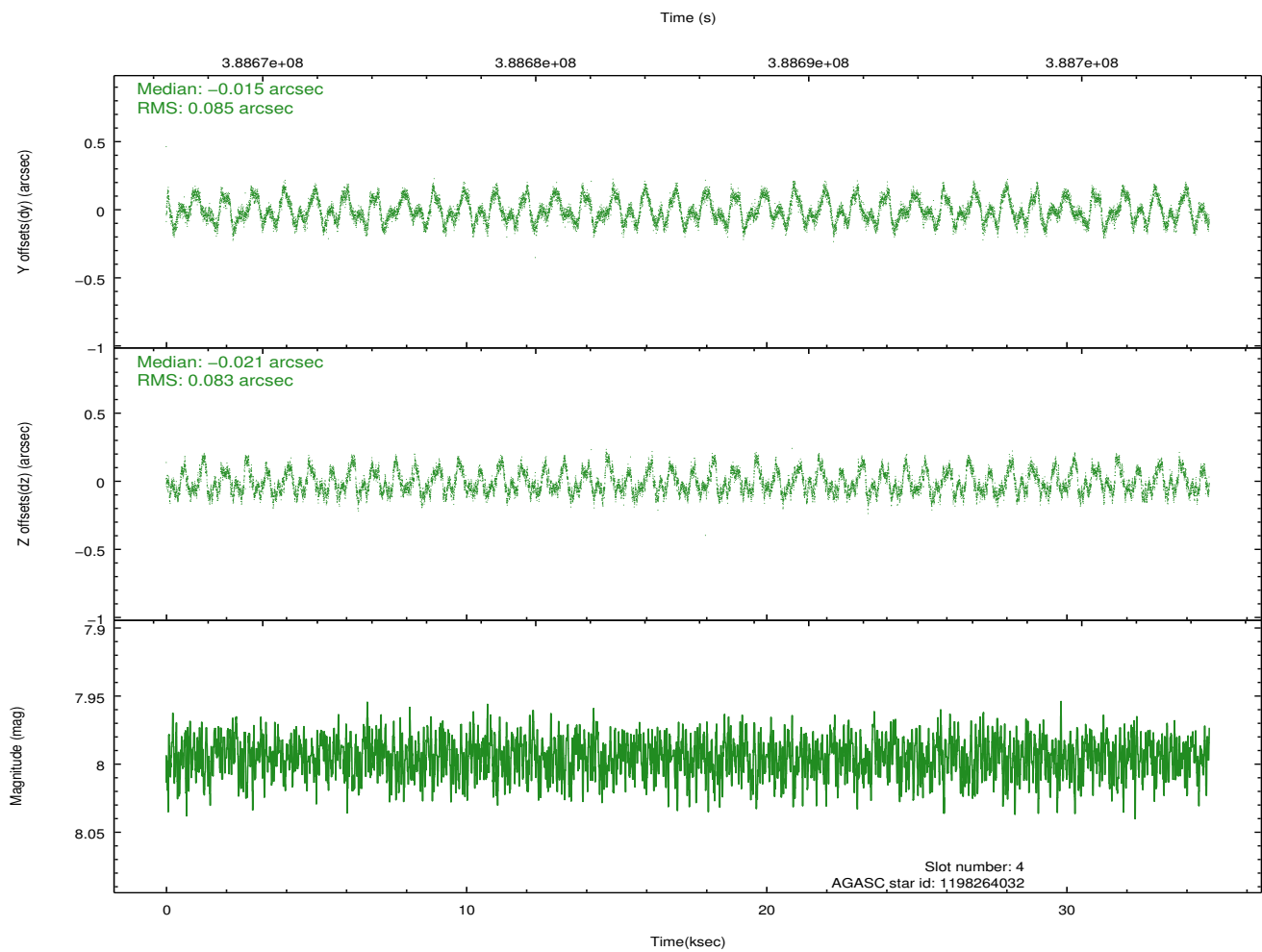
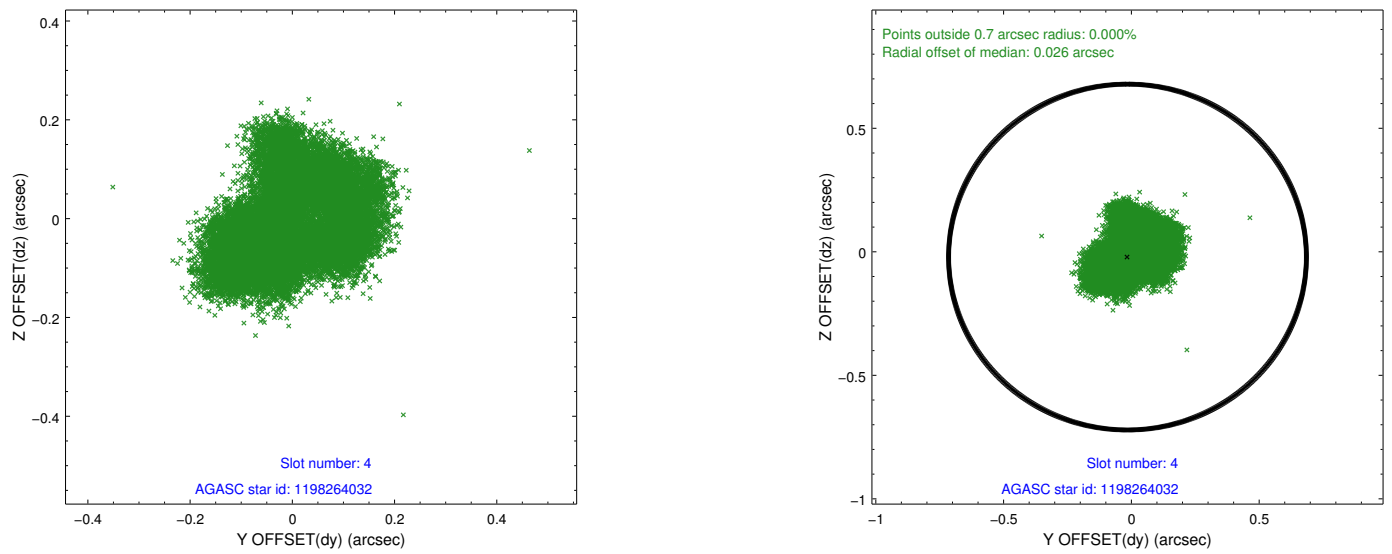
slot	status	id	mag	n_pts	med_dy	med_dz	dr1	dr2	ra	dec	mean_y	mean_z
0	FID	ACIS-I-1	7.02	8477	0.028	-0.012	0.038	0.055	0.000000	0.000000	926.74	-838.62
1	FID	ACIS-I-5	7.01	8477	-0.190	0.039	0.025	0.049	0.000000	0.000000	-1821.59	1058.88
2	FID	ACIS-I-6	7.02	8477	0.072	0.047	0.021	0.040	0.000000	0.000000	392.25	1703.45
3	GUIDE	1198263856	9.23	16935	-0.022	-0.080	0.093	0.145	23.344483	-73.858921	-1224.28	956.06
4	GUIDE	1198264032	7.99	16950	-0.015	-0.021	0.133	0.189	22.563131	-73.173817	84.17	-1281.35
5	GUIDE	1198268712	8.52	16935	0.056	0.074	0.078	0.124	21.961983	-73.269598	614.42	-805.17
6	GUIDE	1198272400	9.14	16939	-0.160	-0.137	0.123	0.178	20.411923	-73.620598	1849.70	806.98
7	GUIDE	1199188856	9.00	16937	0.129	0.149	0.091	0.149	24.755443	-73.162573	-2145.35	-1784.59

2.4 Star Slots

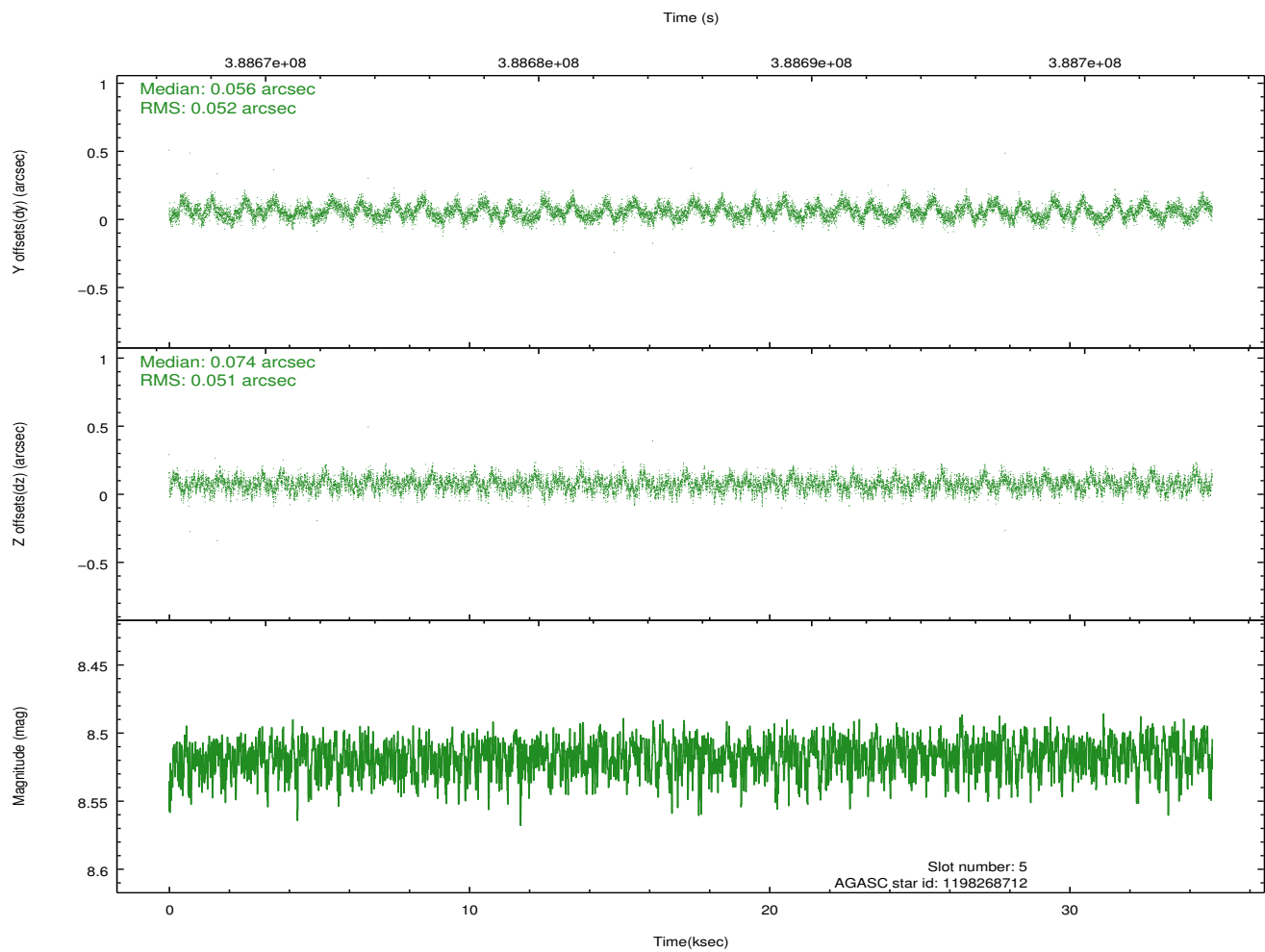
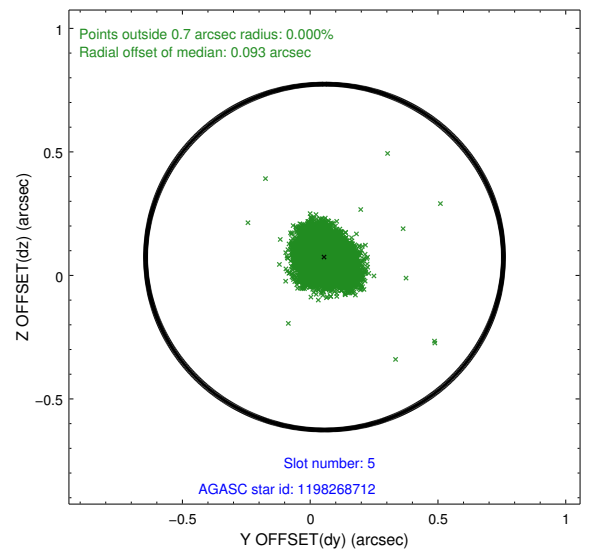
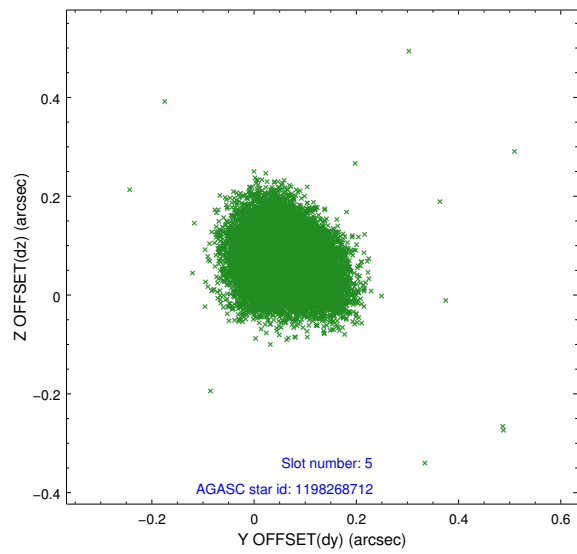
2.4.1 Slot 3



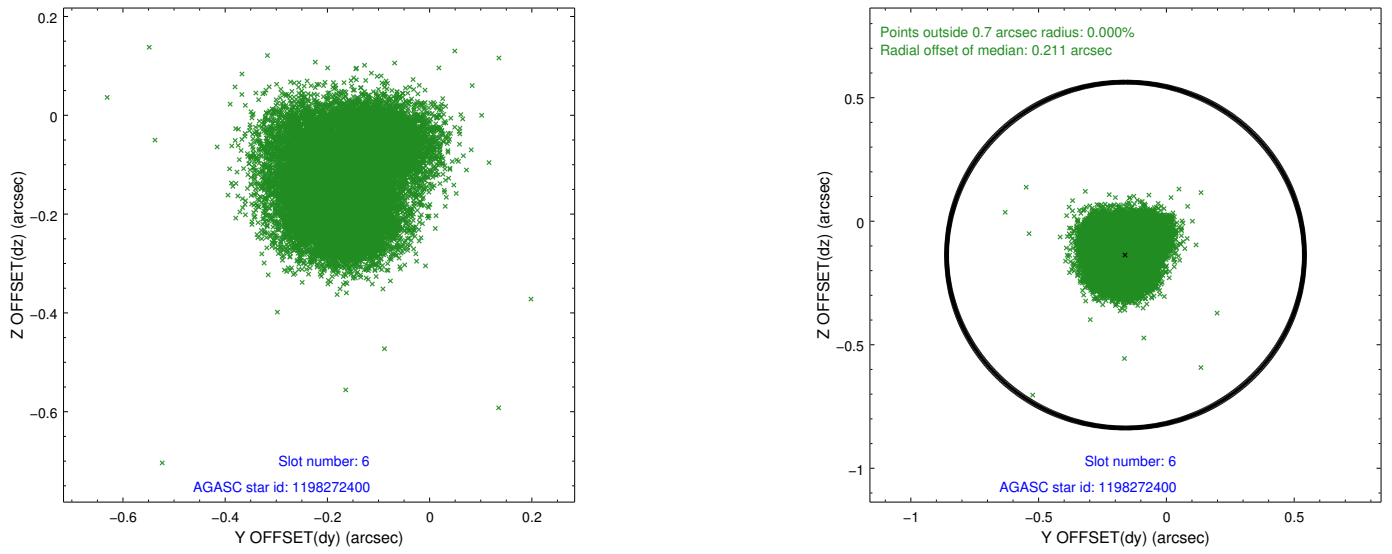
2.4.2 Slot 4



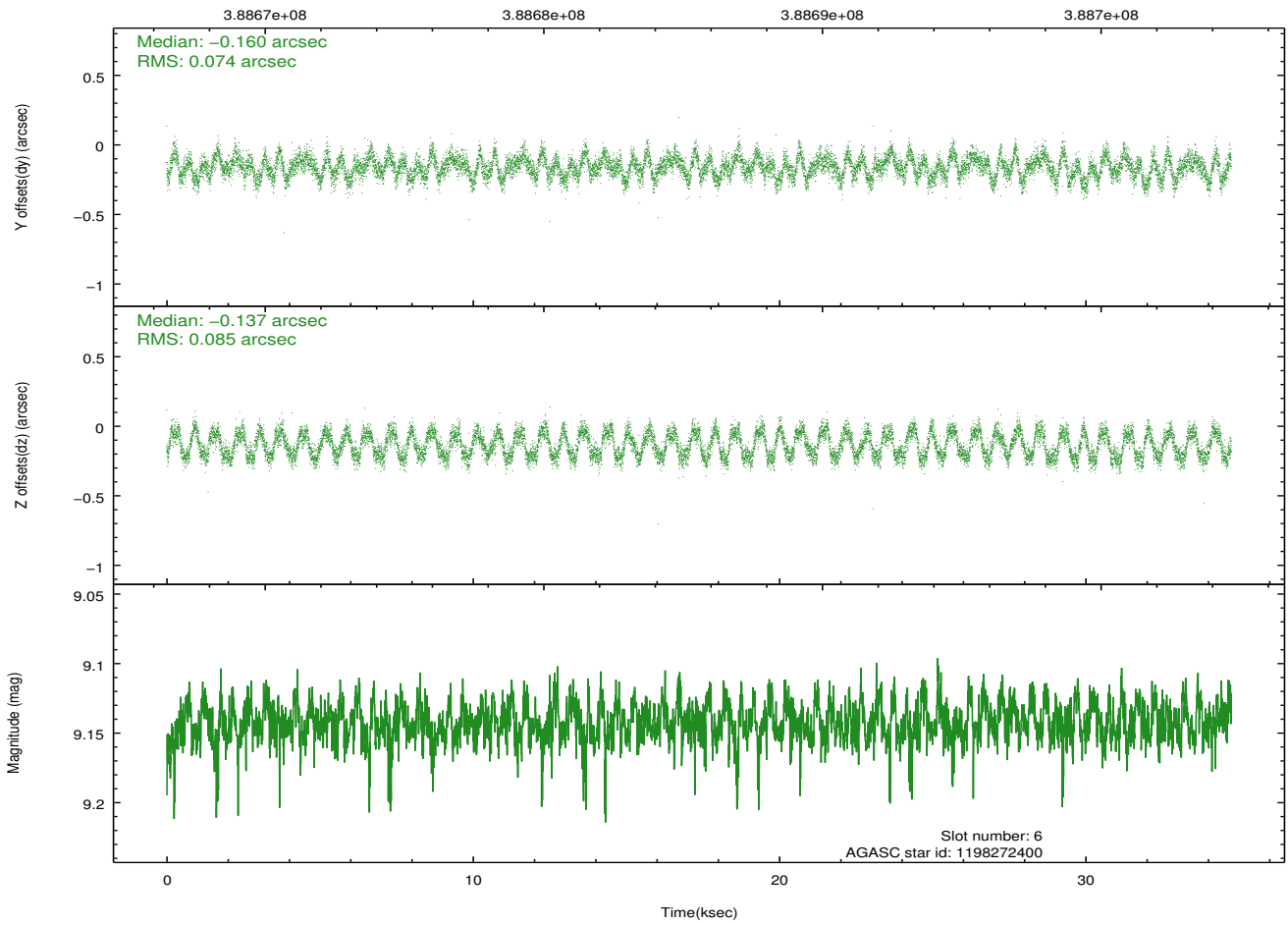
2.4.3 Slot 5



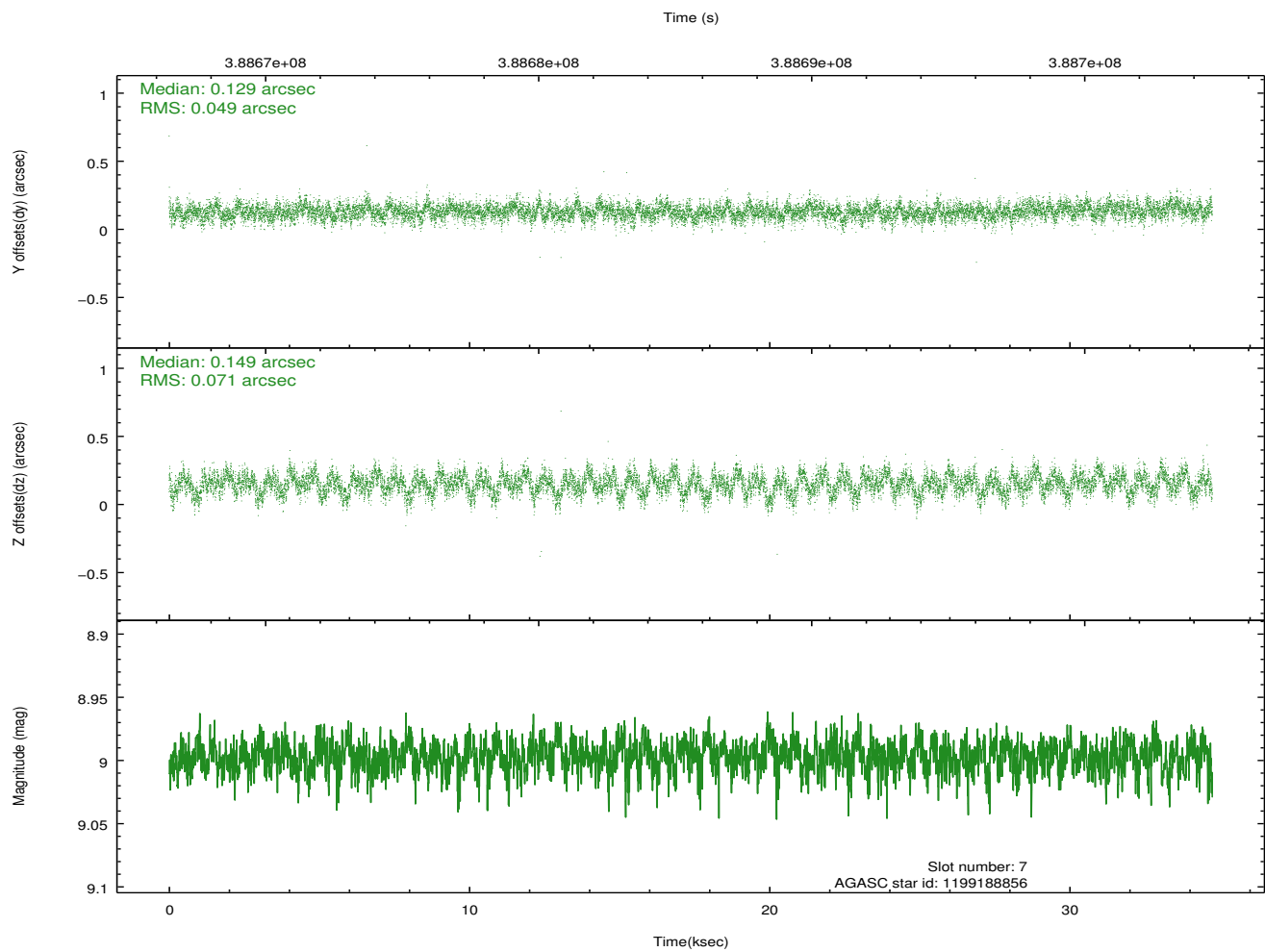
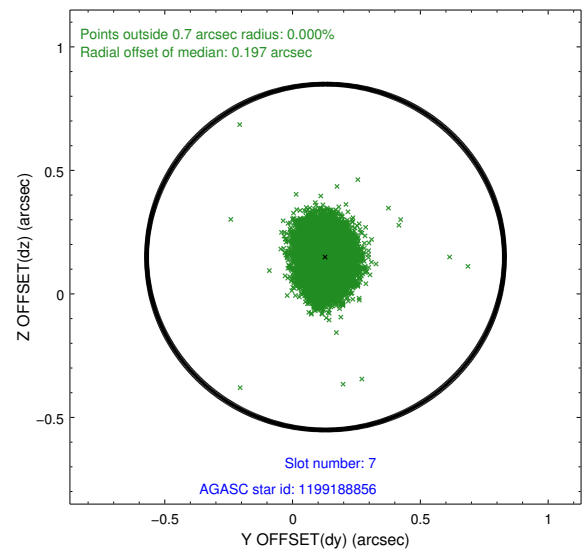
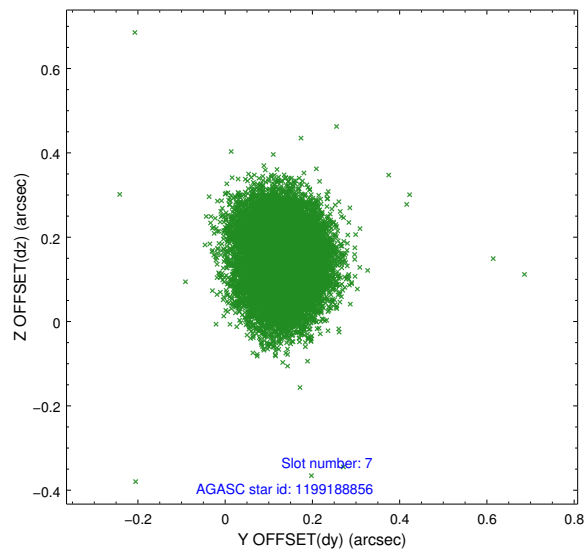
2.4.4 Slot 6



Time (s)

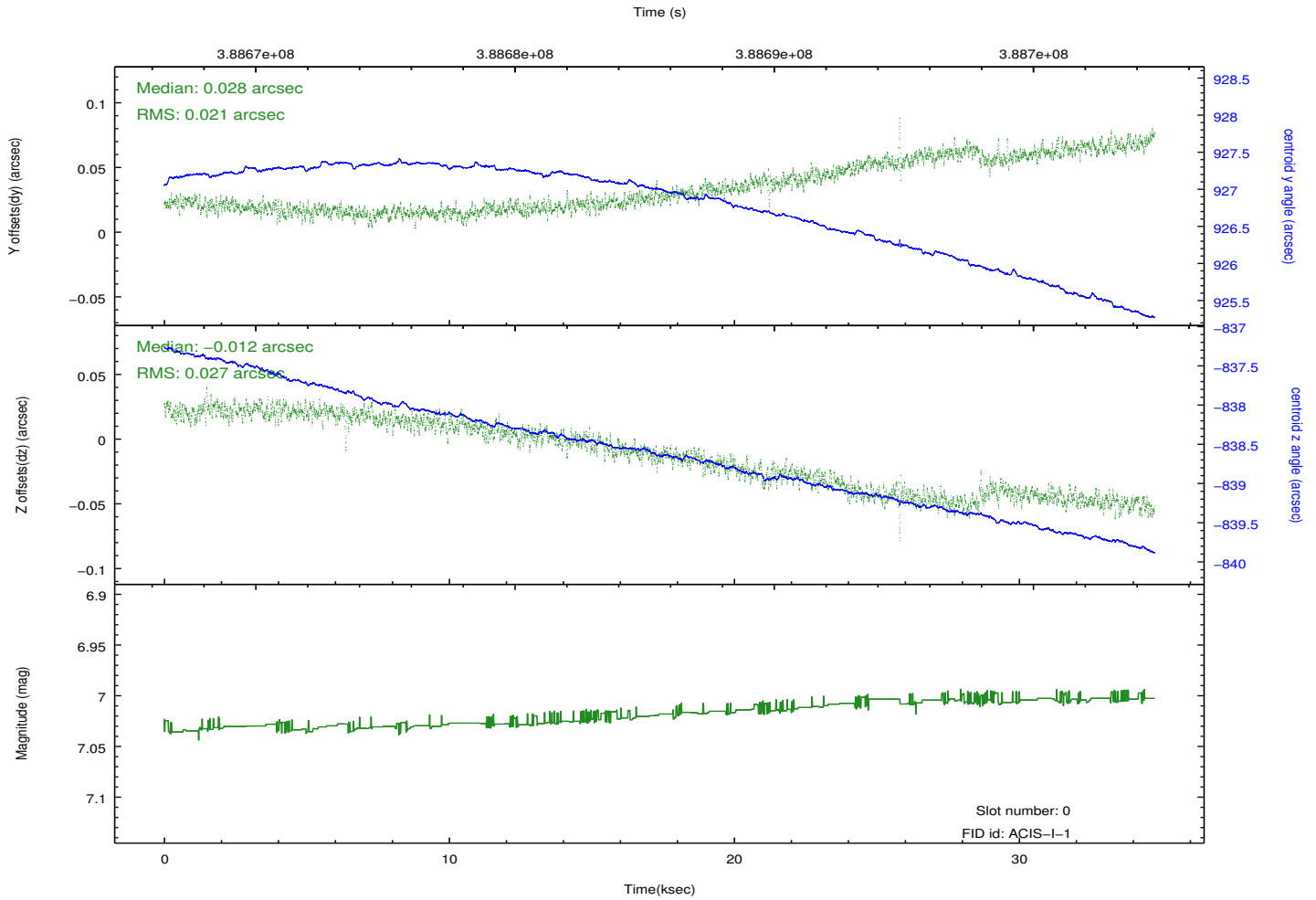
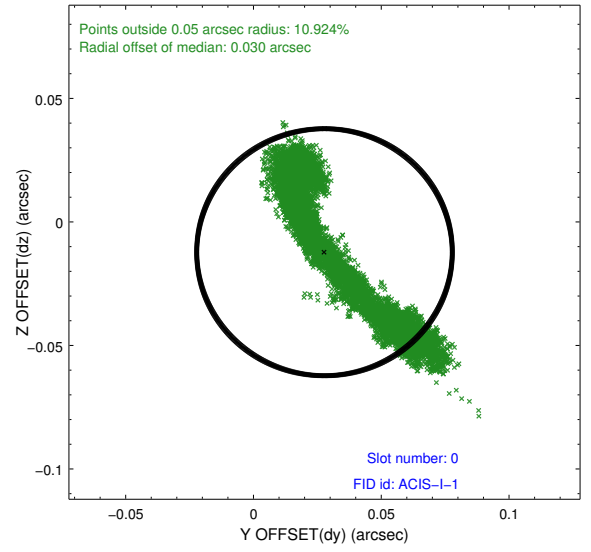
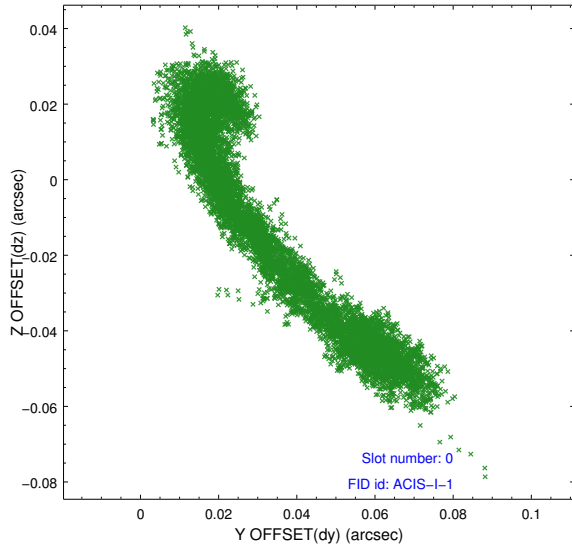


2.4.5 Slot 7

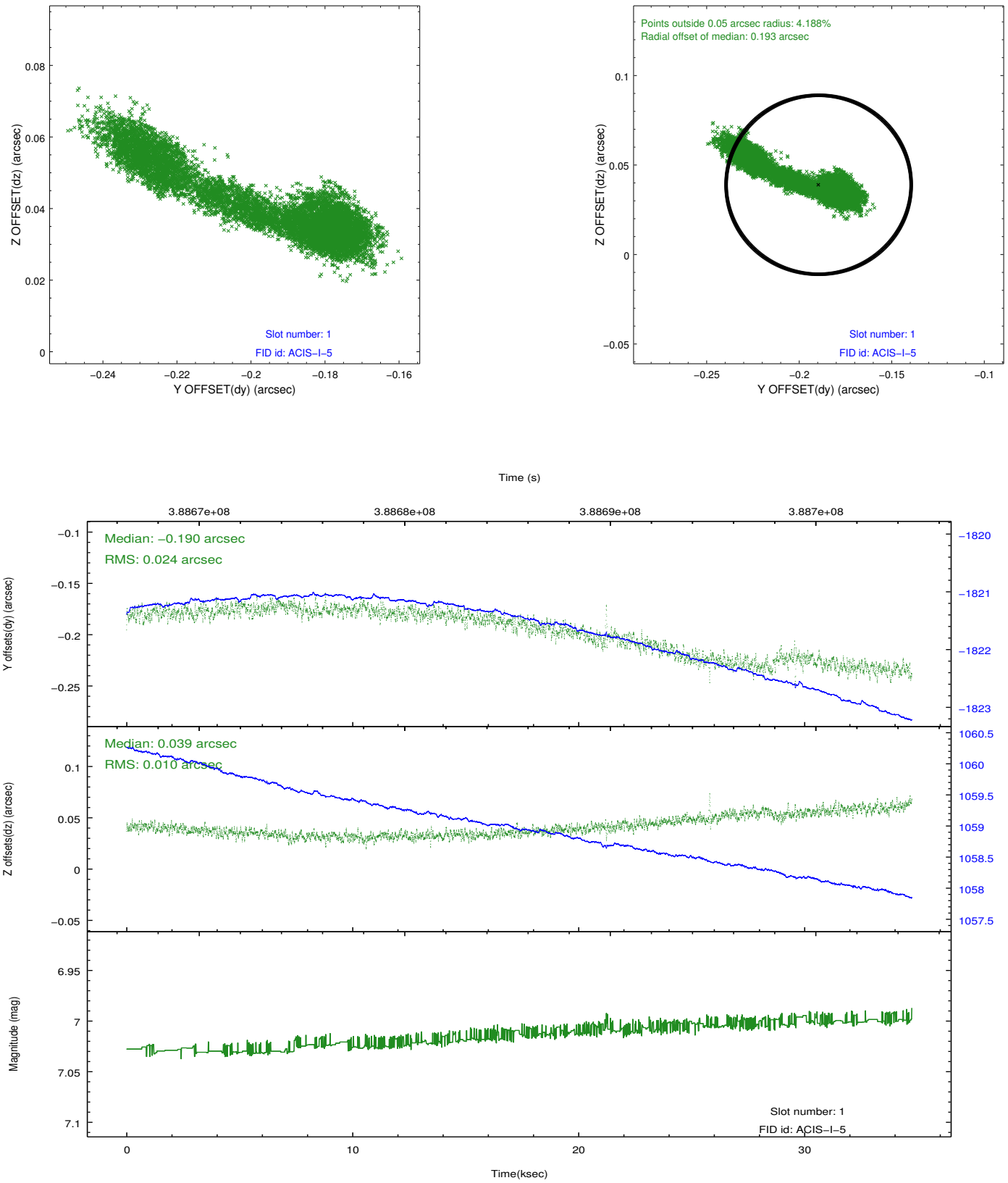


2.5 FID Slots

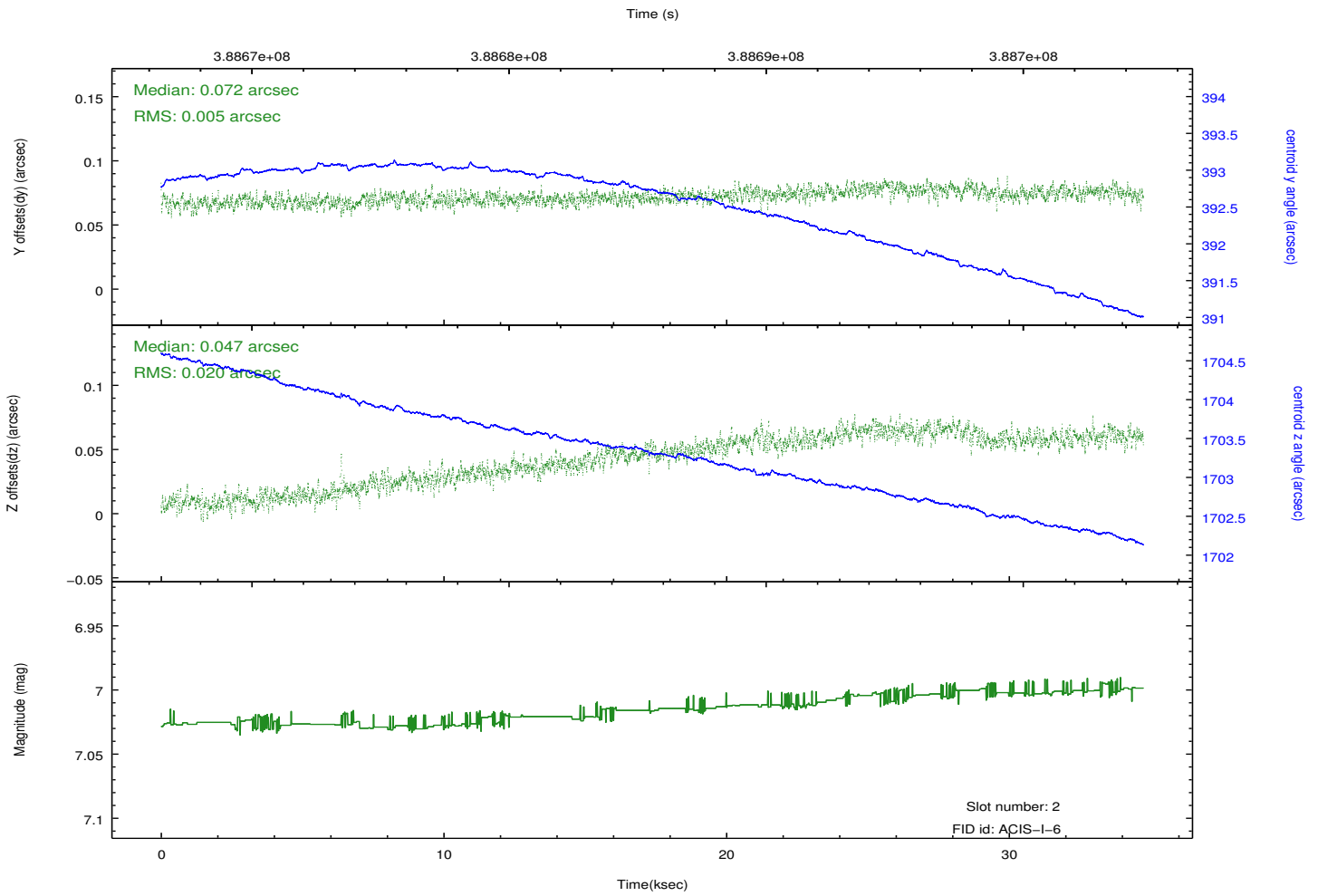
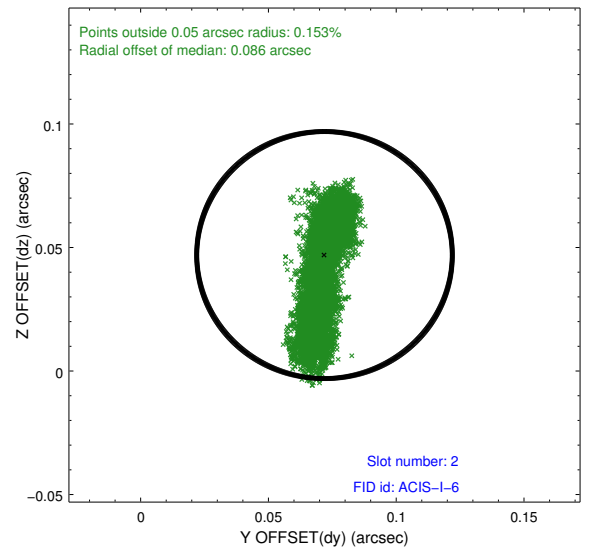
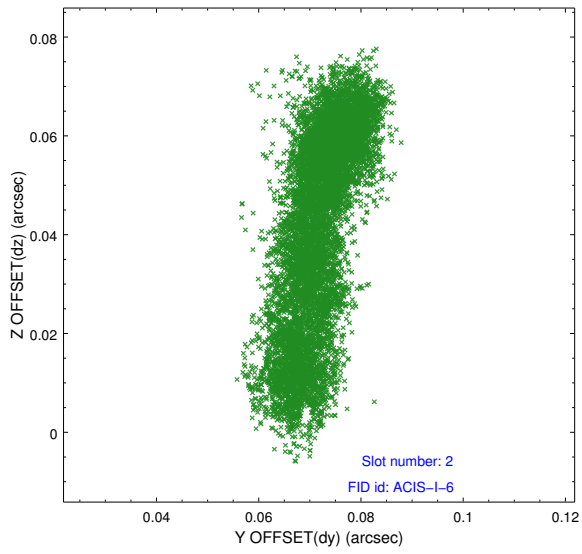
2.5.1 Slot 0



2.5.2 Slot 1



2.5.3 Slot 2



A Summary

A.1 Status

V&V Scientist	Beth Sundheim
V&V Date (YYYY-MM-DD)	2012.07.01
V&V Edition	1
V&V Disposition and Status	OK
V&V Charge Time	33.548799875081

A.2 Comments