

V&V Reference Report

L2 ASCDS Version : 8.4.5

Observation 12308 - L2 Version 2
Chandra X-Ray Center

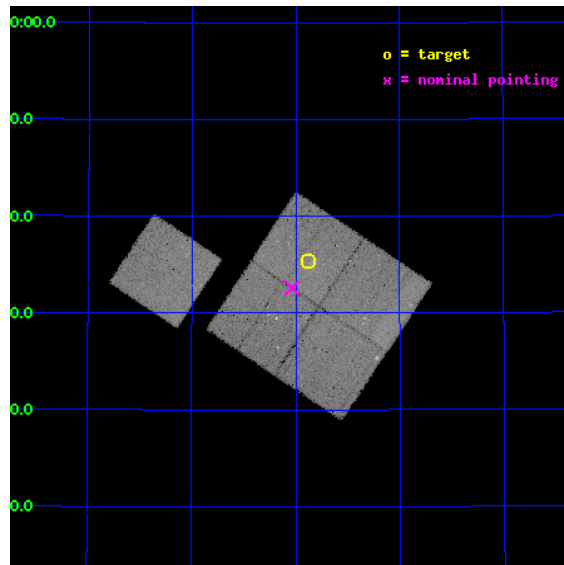
L2 Processing Date : Jul 4 2012

Contents

1	Front	2
2	OBI	3
2.1	OBI	3
2.1.1	Images	3
2.1.2	Bias	3
2.1.3	Parameters	4
2.1.4	Events	4
2.2	Compared Parameters	5
2.3	Aspect	6
2.4	Star Slots	9
2.4.1	Slot 3	9
2.4.2	Slot 4	10
2.4.3	Slot 5	11
2.4.4	Slot 6	12
2.4.5	Slot 7	13
2.5	FID Slots	14
2.5.1	Slot 0	14
2.5.2	Slot 1	15
2.5.3	Slot 2	16
A	Summary	17
A.1	Status	17
A.2	Comments	17

1 Front

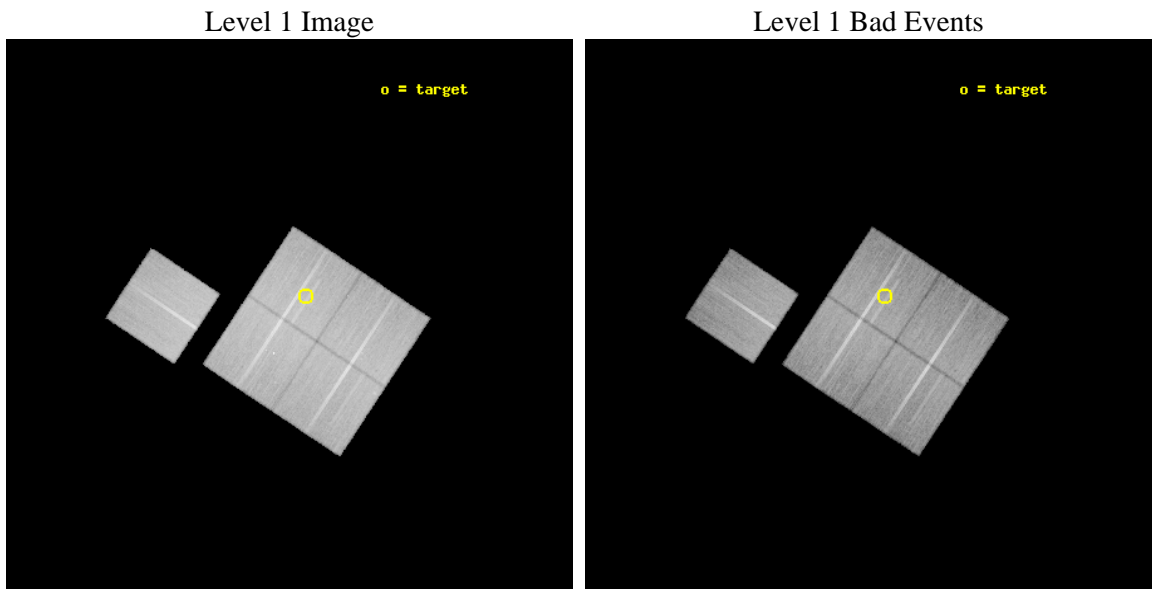
seq_num	801013	Sequence number
obs_id	12308	Observation id
title	The X-ray Properties of Weak-Lensing Selected Galaxy Clusters	Prop
observer	MR Paul Giles	Principal investigator
object	SLJ1602.8+4335	Source name
dtcycle	0	
cycle	P	events from which exps? Prim/Second/Both
ra_targ	240.72	Observer's specified target RA [deg]
dec_targ	43.59	Observer's specified target Dec [deg]
ra_nom	240.75925610851	Nominal RA [deg]
dec_nom	43.543616252693	Nominal Dec [deg]
roll_nom	303.54043125805	Nominal Roll [deg]
revision	2	Processing version of data
ontime	42854.359339416	Sum of GTIs [s]
liveltime	42294.435585726	Livetime [s]
ontime0	42854.352586031	Sum of GTIs [s]
ontime1	42854.359339297	Sum of GTIs [s]
ontime2	42851.218388975	Sum of GTIs [s]
ontime3	42854.359339416	Sum of GTIs [s]
ontime6	42854.31157589	Sum of GTIs [s]
l2events	148489	Number of level 2 events



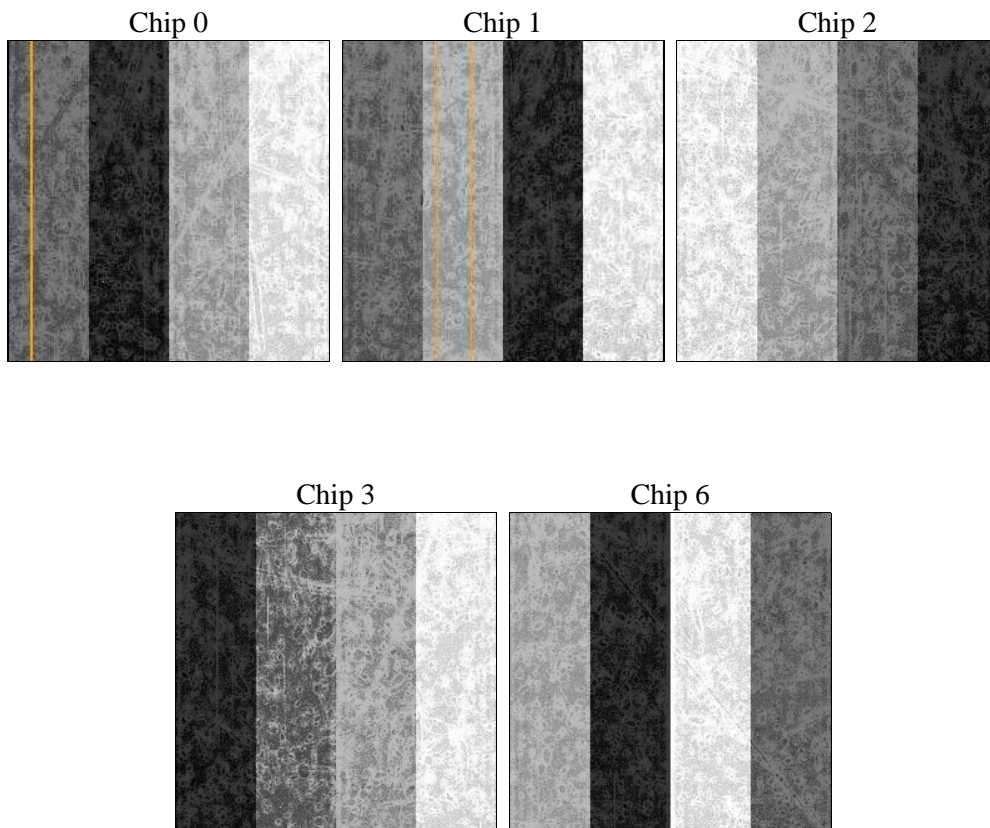
2 OBI

2.1 OBI

2.1.1 Images



2.1.2 Bias



2.1.3 Parameters

obi_num	0	Obi number	sched_exp_time	43085.000000	[s] Scheduled observation exposure time
ascdsver	8.4.5	Processing system revision	ontime	42854.359339416	Sum of GTIs [s]
caldbver	4.5.0	 	ontime0	42854.352586031	Sum of GTIs [s]
date	2012-07-04T17:06:50	Date and time of file creation	ontime1	42854.359339297	Sum of GTIs [s]
revision	2	Processing version of data	ontime2	42851.218388975	Sum of GTIs [s]
			ontime3	42854.359339416	Sum of GTIs [s]
			ontime6	42854.31157589	Sum of GTIs [s]
			l1events	1562589	Number of level 1 events

2.1.4 Events

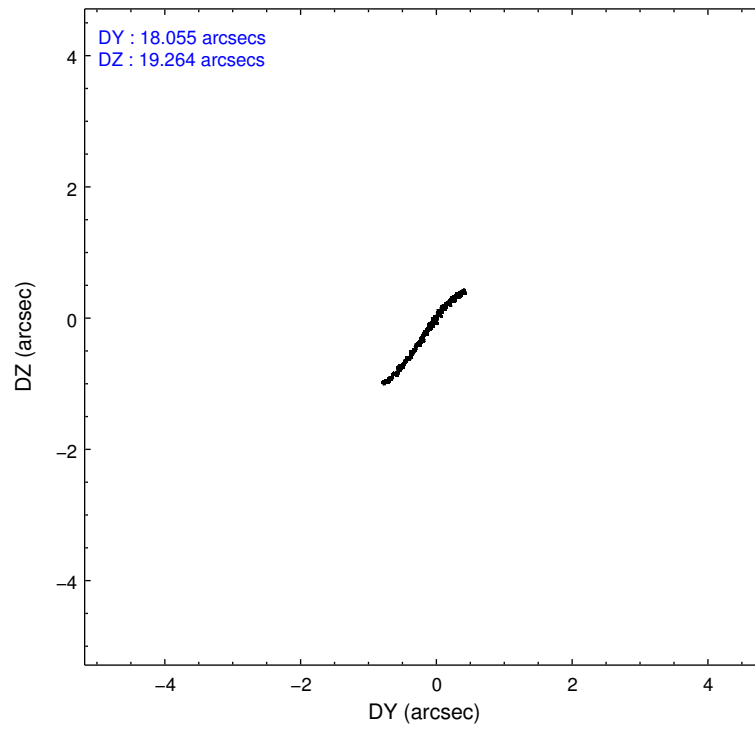
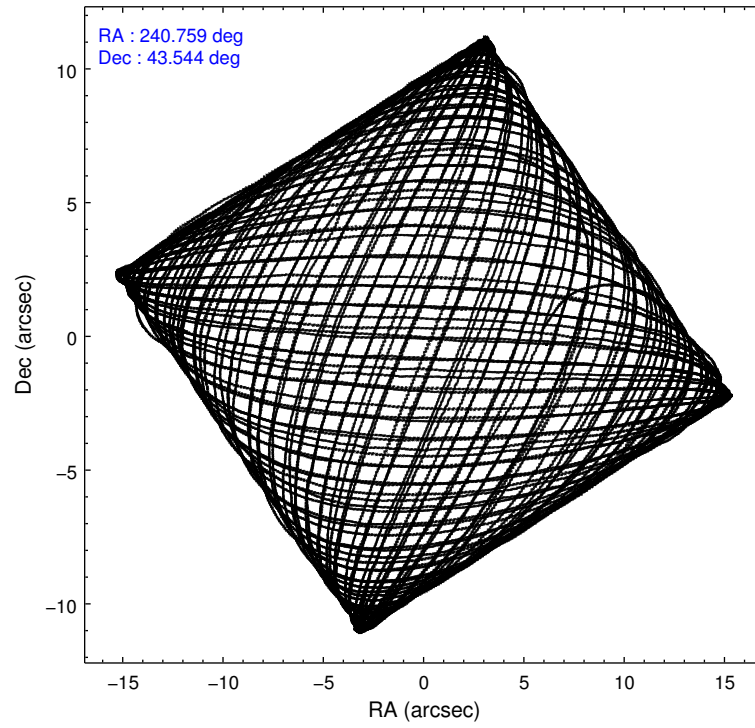
	ccd 0	ccd 1	ccd 2	ccd 3	ccd 6
level 1 events	296066	295390	336111	317270	317752
rejected events	261207	256412	301265	283637	282728
rejected %	88%	86%	89%	89%	88%

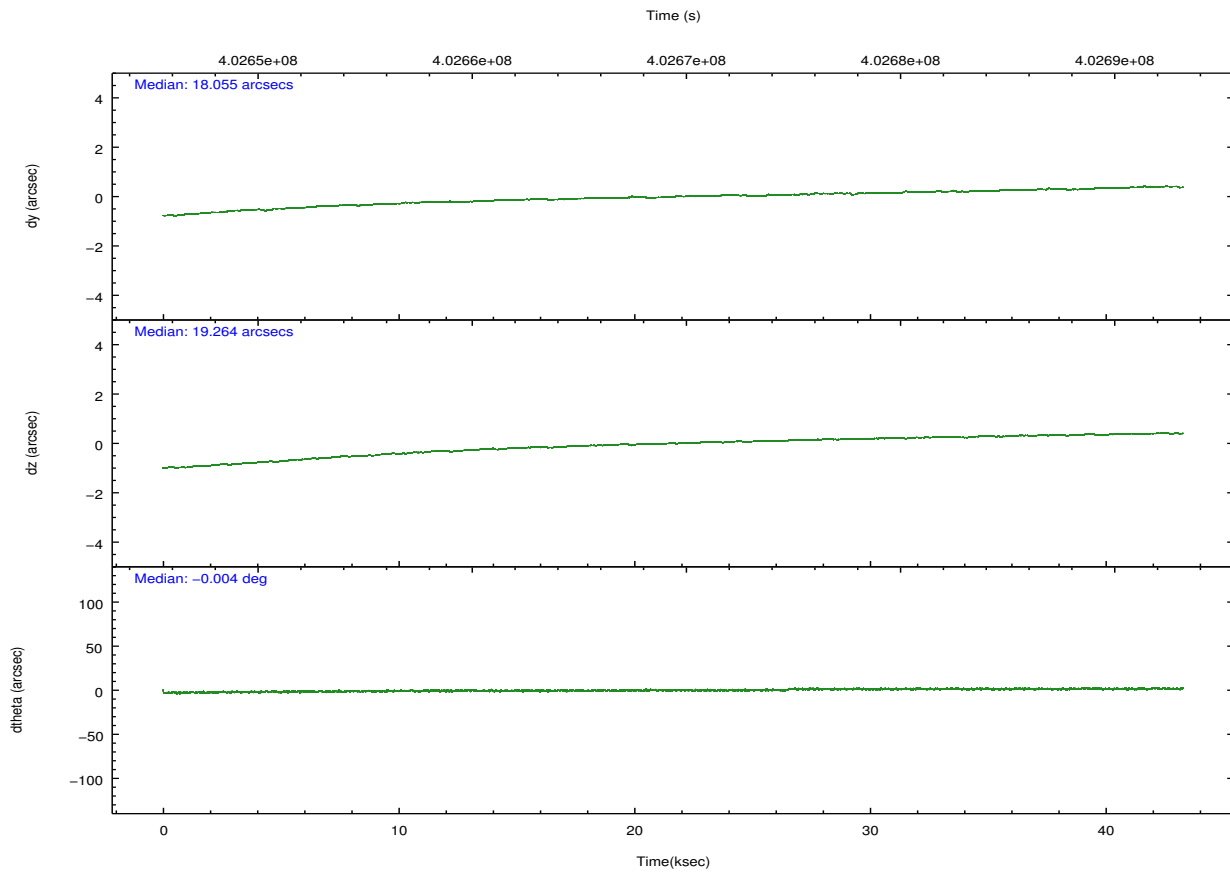
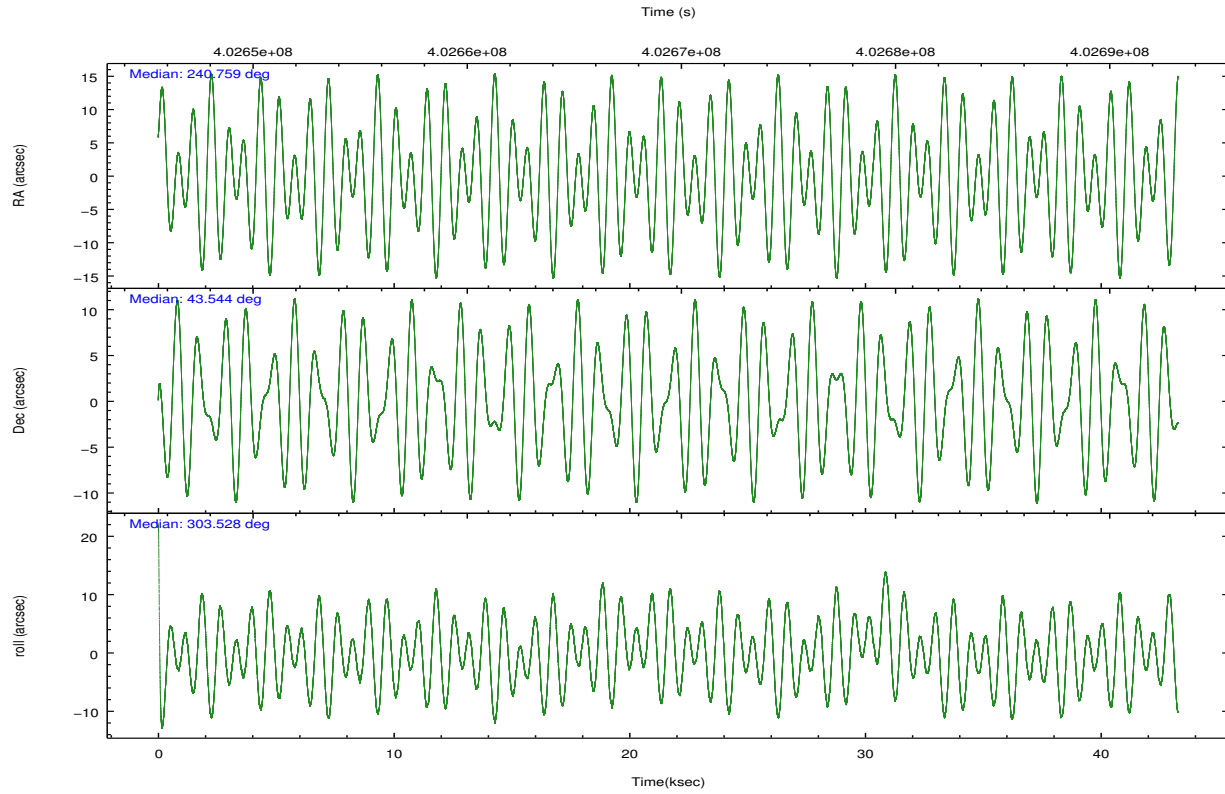
	ccd 0	ccd 1	ccd 2	ccd 3	ccd 6
grade 0 events	12089	14040	12903	12243	12061
	4%	4%	3%	3%	3%
grade 1 events	187	164	201	202	172
	0%	0%	0%	0%	0%
grade 2 events	8735	9102	8531	7511	7853
	2%	3%	2%	2%	2%
grade 3 events	3656	3889	3475	3637	3665
	1%	1%	1%	1%	1%
grade 4 events	3461	3914	3604	3601	3703
	1%	1%	1%	1%	1%
grade 5 events	12825	13760	12032	14578	14142
	4%	4%	3%	4%	4%
grade 6 events	6920	8033	6334	6643	7746
	2%	2%	1%	2%	2%
grade 7 events	248193	242488	289031	268855	268410
	83%	82%	85%	84%	84%

2.2 Compared Parameters

Parameter	Planned	Actual	Parameter	Planned	Actual
Instrument	ACIS	ACIS	Obspar format version number	7	7
Detector	ACIS-01236	ACIS-01236	Obspar file type	PREDICTED	ACTUAL
Grating	NONE	NONE	Obspar update status	NONE	UPDATED
Data mode	VFAINT	VFAINT	Number of optional ACIS chips dropped	0	0
Observation mode	POINTING	POINTING	On-chip summing requested	N	N
[deg] Pointing RA	240.725218	240.7592561085135	Subarray requested	NONE	NONE
[deg] Pointing Dec	43.555770	43.54361625269298	Alternating exposures requested	N	N
[deg] Pointing Roll	303.355189	303.5404312580488	[s] Primary exposure time	0.000000	3.1
[mm] SIM focus pos	-0.782348	-0.7809083437167272			
[mm] SIM defocus	0	0.001439871863259334			
[mm] SIM translation stage pos	-225.792463	-225.785514080088			
[mm] SIM translation stage offset	-7.8	-7.806938922841681			
[s] Observation start time (MET)	402647916.184000	402647182.15705			
Observation start date	2010-10-05T06:37:30	2010-10-05T06:26:22			
[s] Observation end time (MET)	402691001.184000	402691651.78434			
Observation end date	2010-10-05T18:35:35	2010-10-05T18:47:31			
Read mode	TIMED	TIMED			

2.3 Aspect





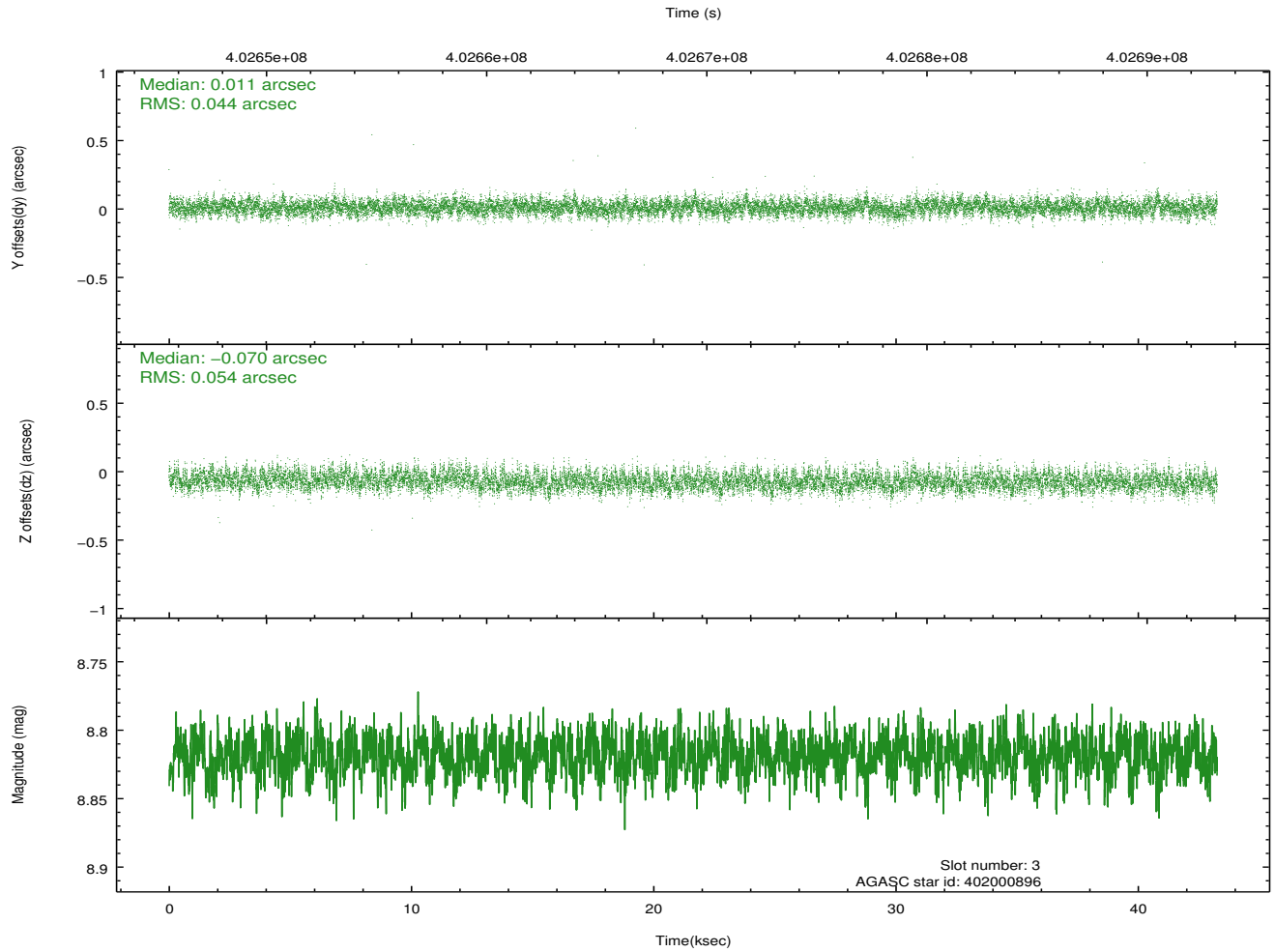
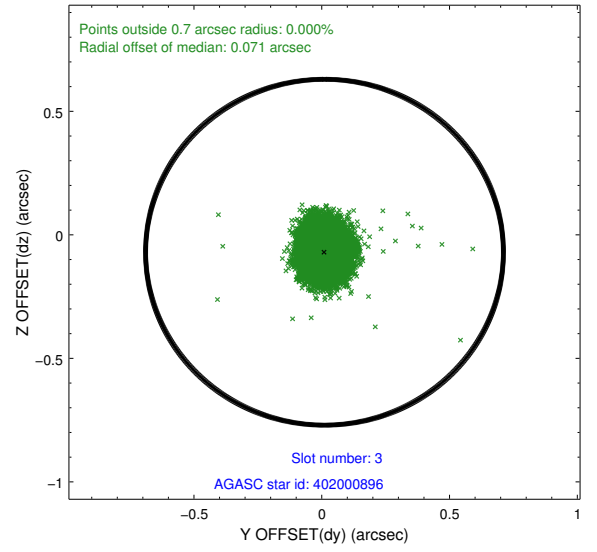
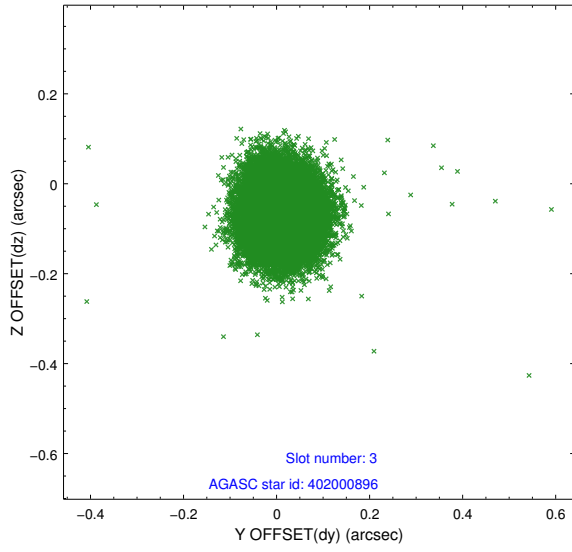
Slot Statistics

slot	status	id	mag	n_pts	med_dy	med_dz	dr1	dr2	ra	dec	mean_y	mean_z
0	FID	ACIS-I-1	6.99	10553	0.101	-0.106	0.022	0.042	0.000000	0.000000	921.36	-1003.22
1	FID	ACIS-I-4	6.91	10550	0.066	0.048	0.009	0.016	0.000000	0.000000	2140.88	897.73
2	FID	ACIS-I-5	6.98	10553	-0.267	0.128	0.020	0.036	0.000000	0.000000	-1827.05	894.58
3	GUIDE	402000896	8.82	21086	0.011	-0.070	0.074	0.118	241.290106	43.612704	634.86	1345.38
4	GUIDE	402001688	7.28	21035	-0.099	-0.073	0.065	0.103	241.364067	43.719053	417.63	1715.17
5	GUIDE	402007168	8.27	21096	0.138	0.086	0.065	0.104	240.453077	43.473225	-142.72	-756.64
6	GUIDE	402009440	8.74	21098	0.091	-0.063	0.089	0.140	240.439336	42.842846	1728.81	-2040.46
7	GUIDE	402011280	8.55	21097	-0.145	0.120	0.070	0.114	240.118930	42.990142	818.90	-2449.73

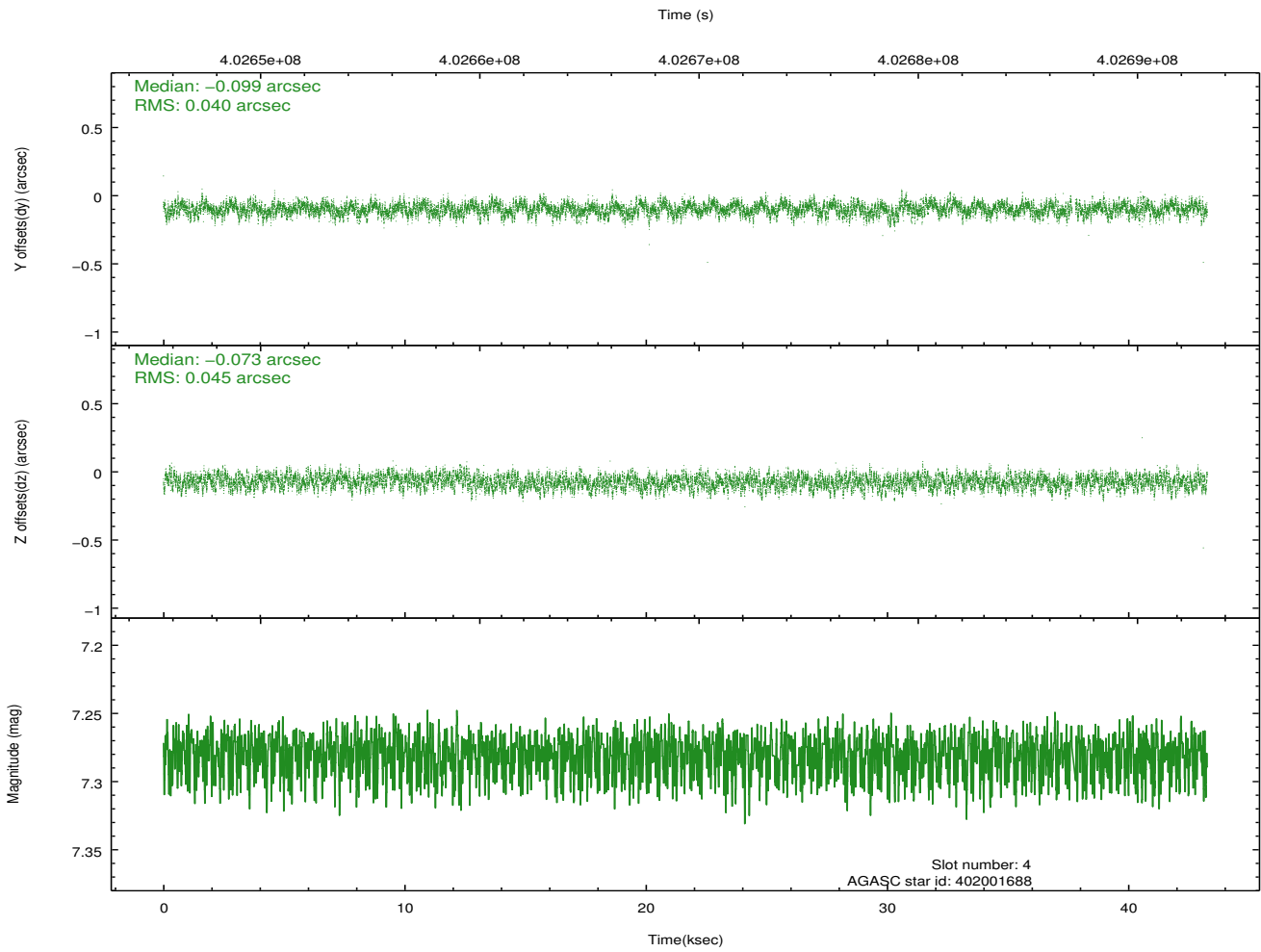
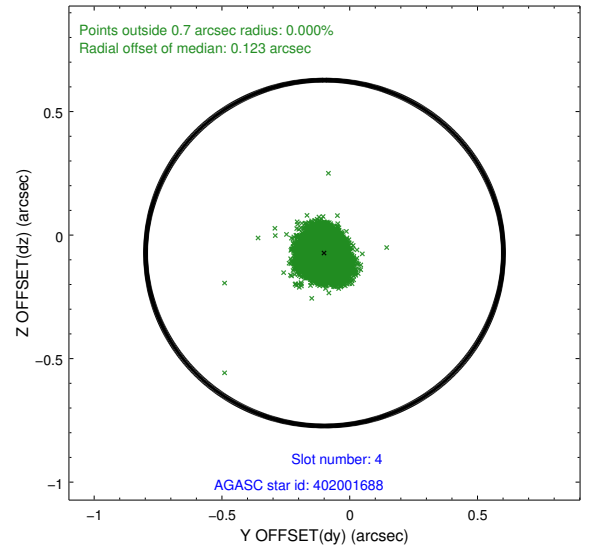
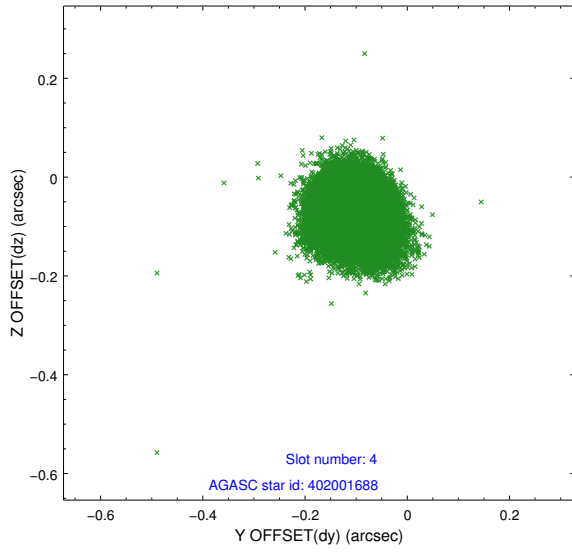
∞

2.4 Star Slots

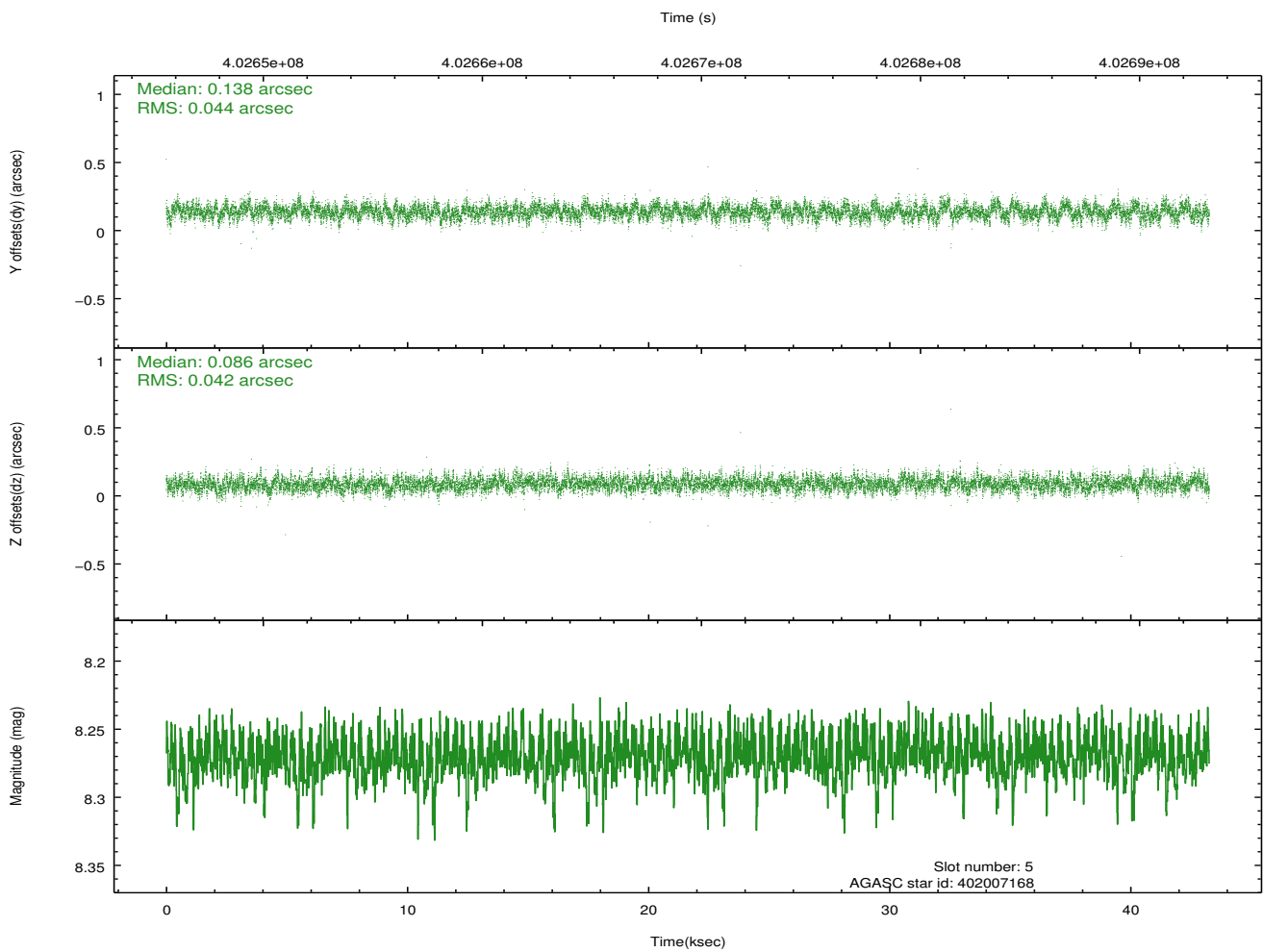
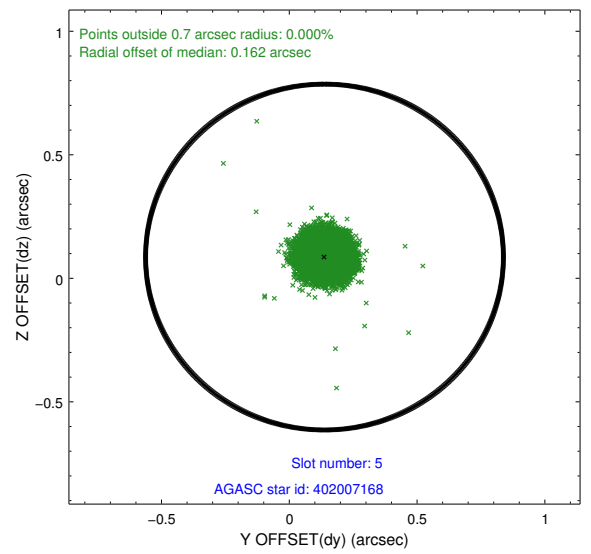
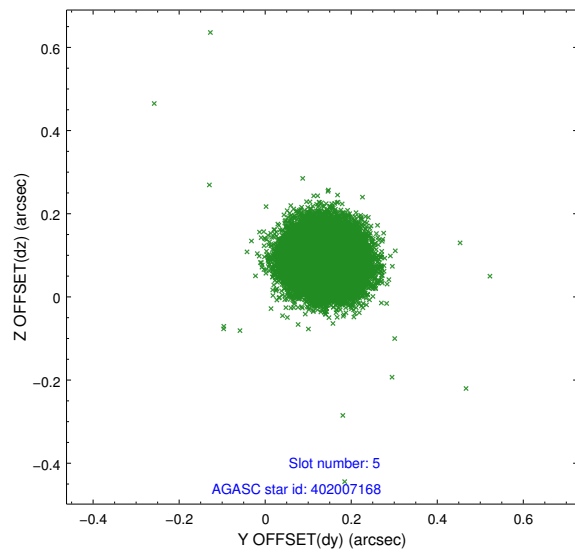
2.4.1 Slot 3



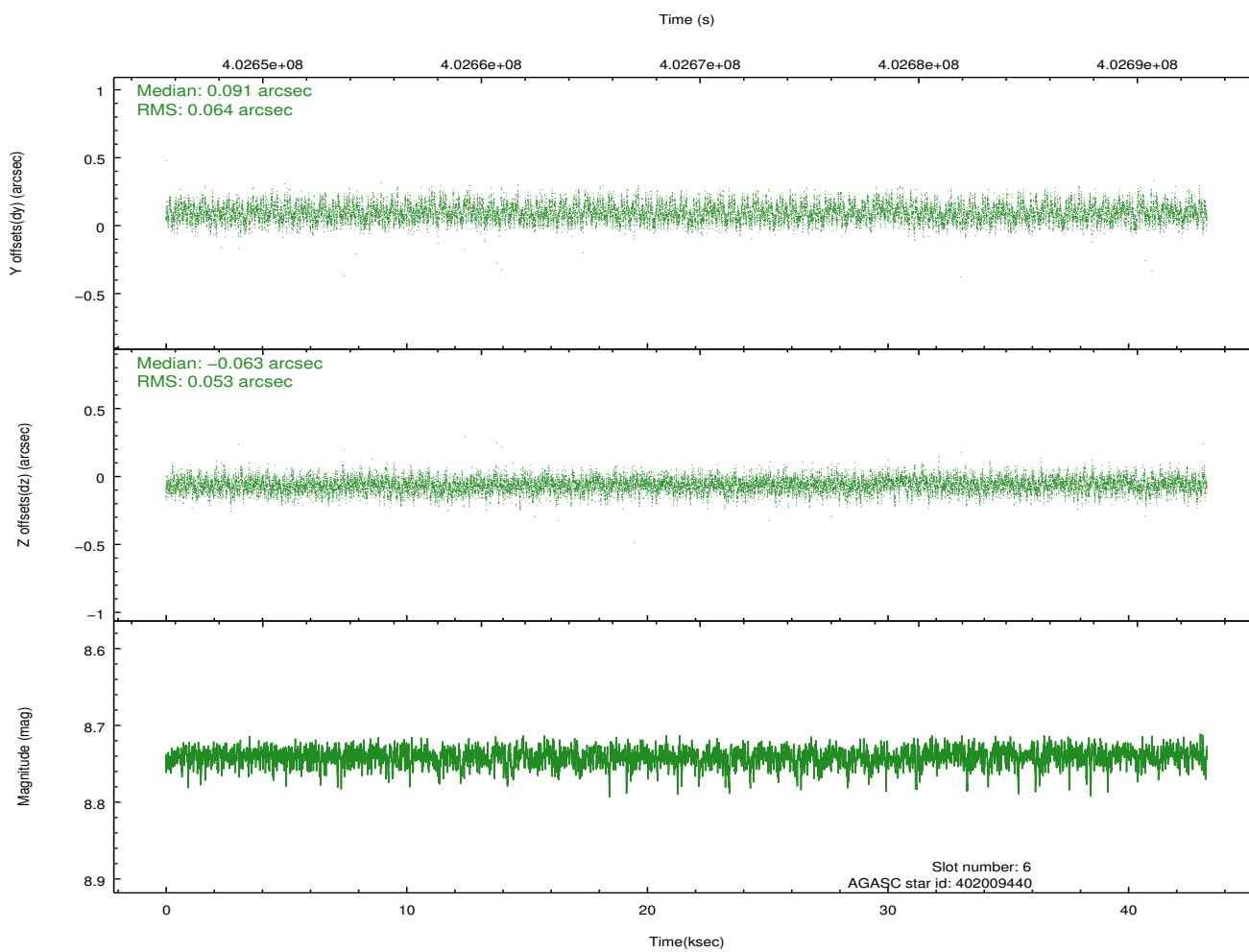
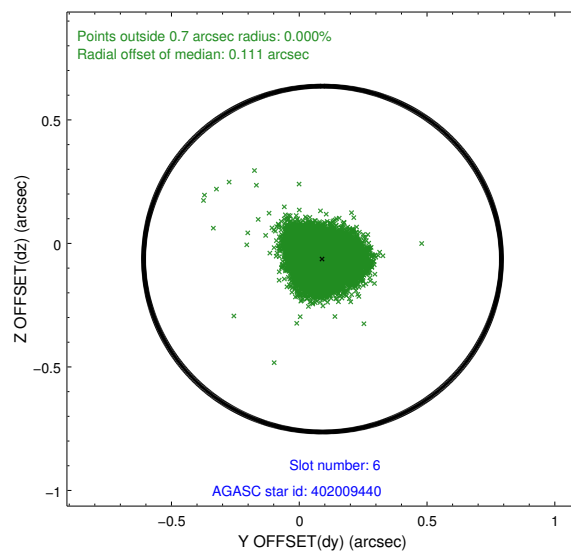
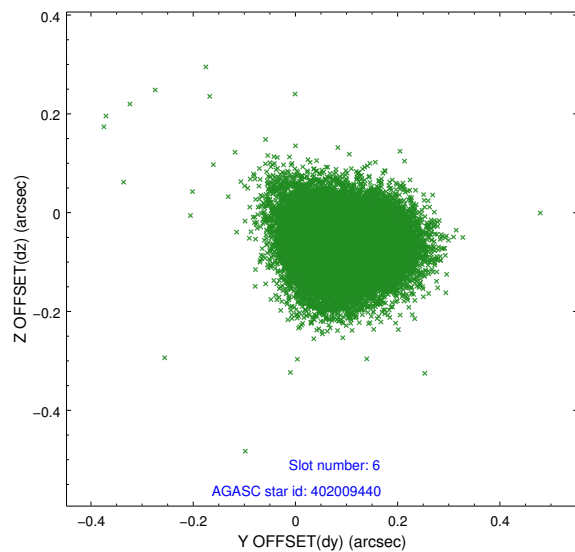
2.4.2 Slot 4



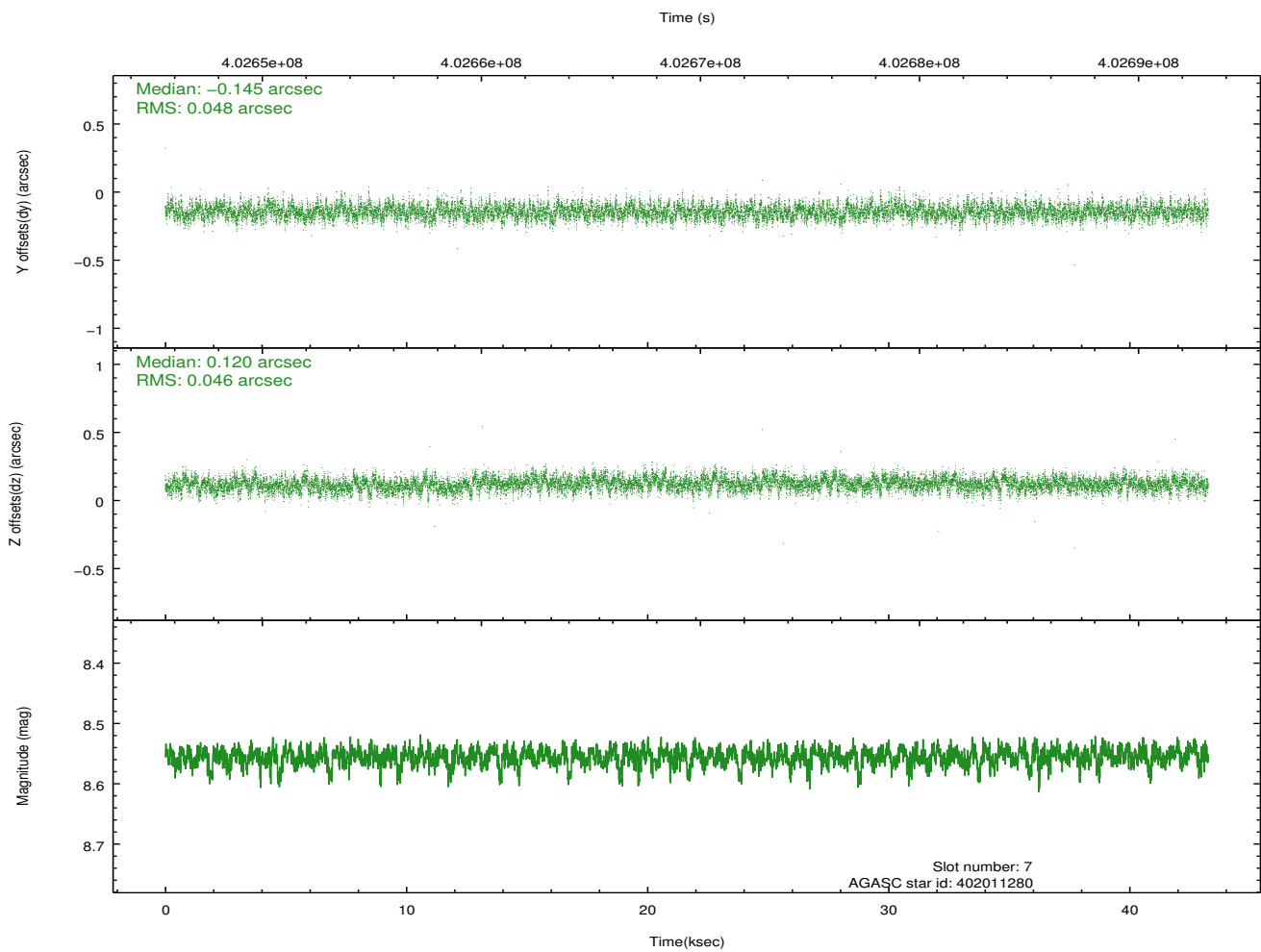
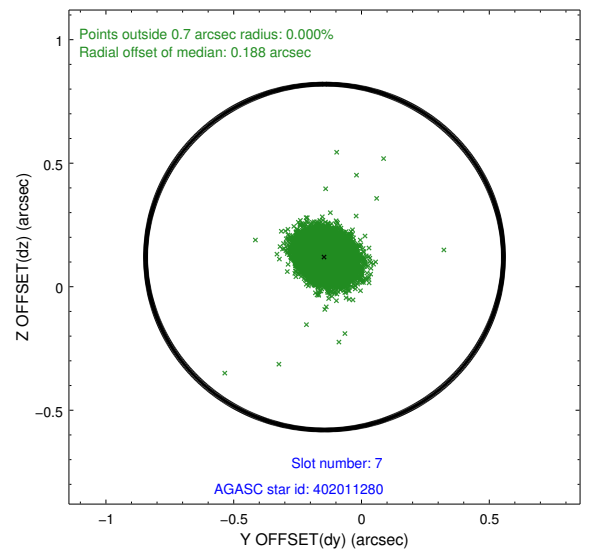
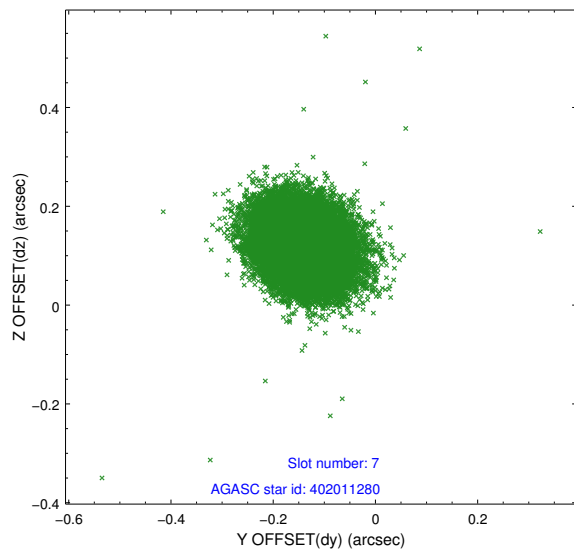
2.4.3 Slot 5



2.4.4 Slot 6

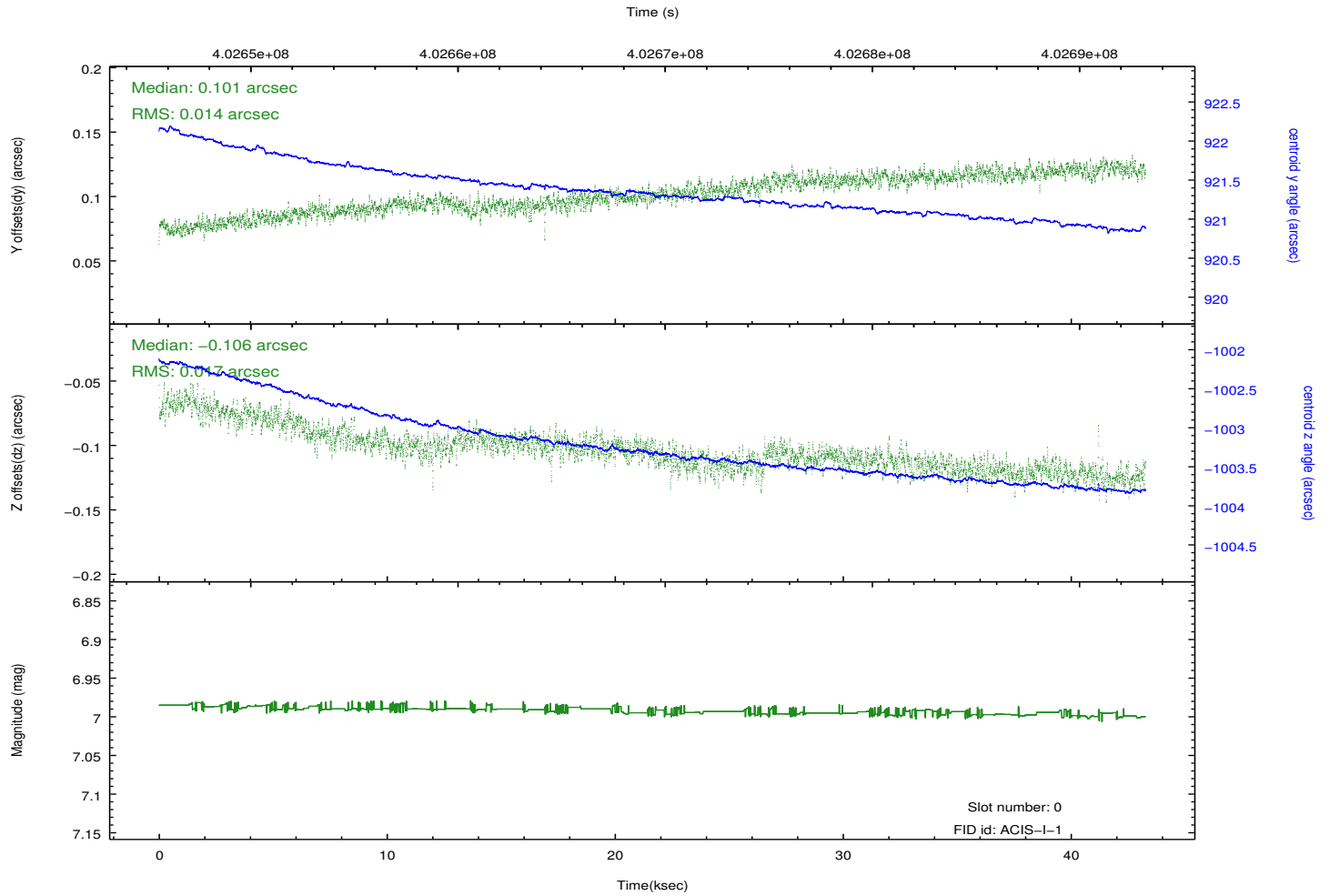
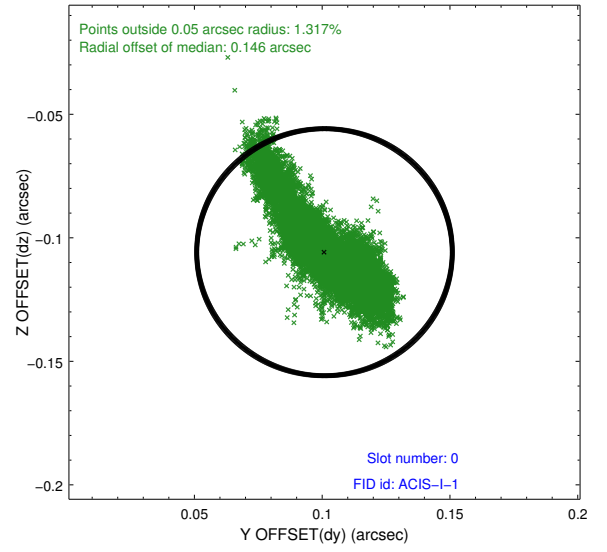
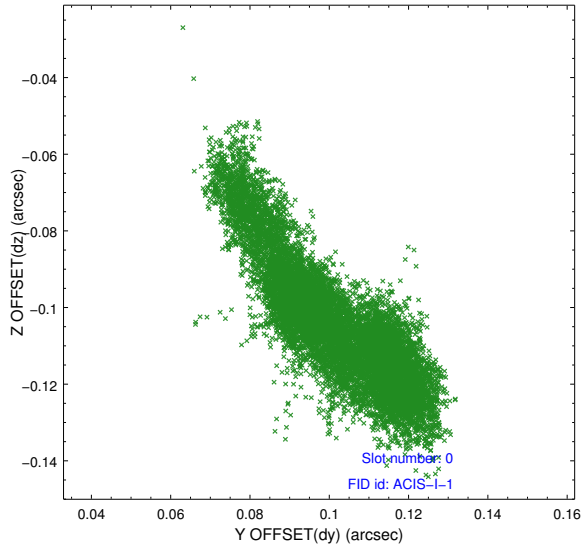


2.4.5 Slot 7

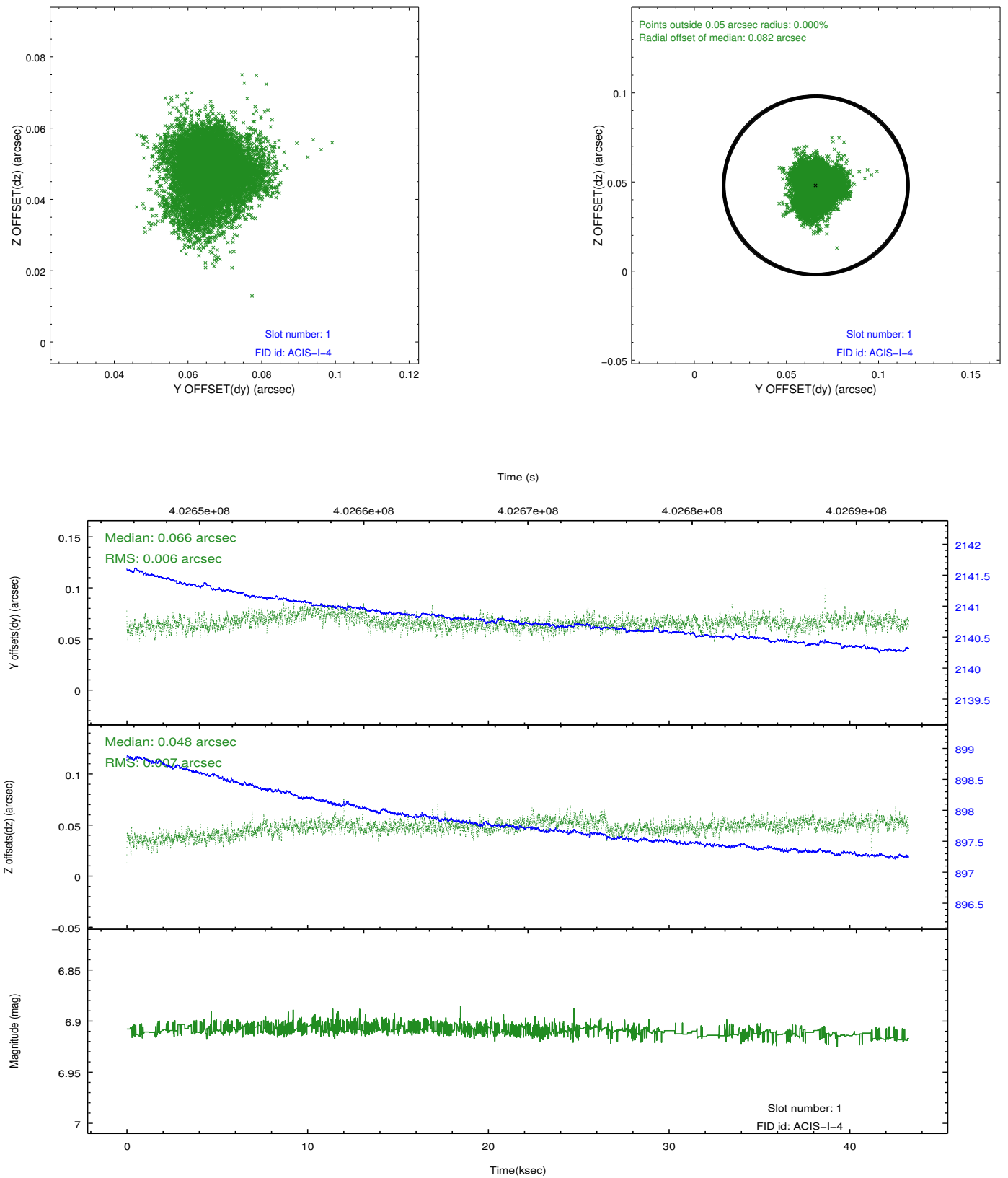


2.5 FID Slots

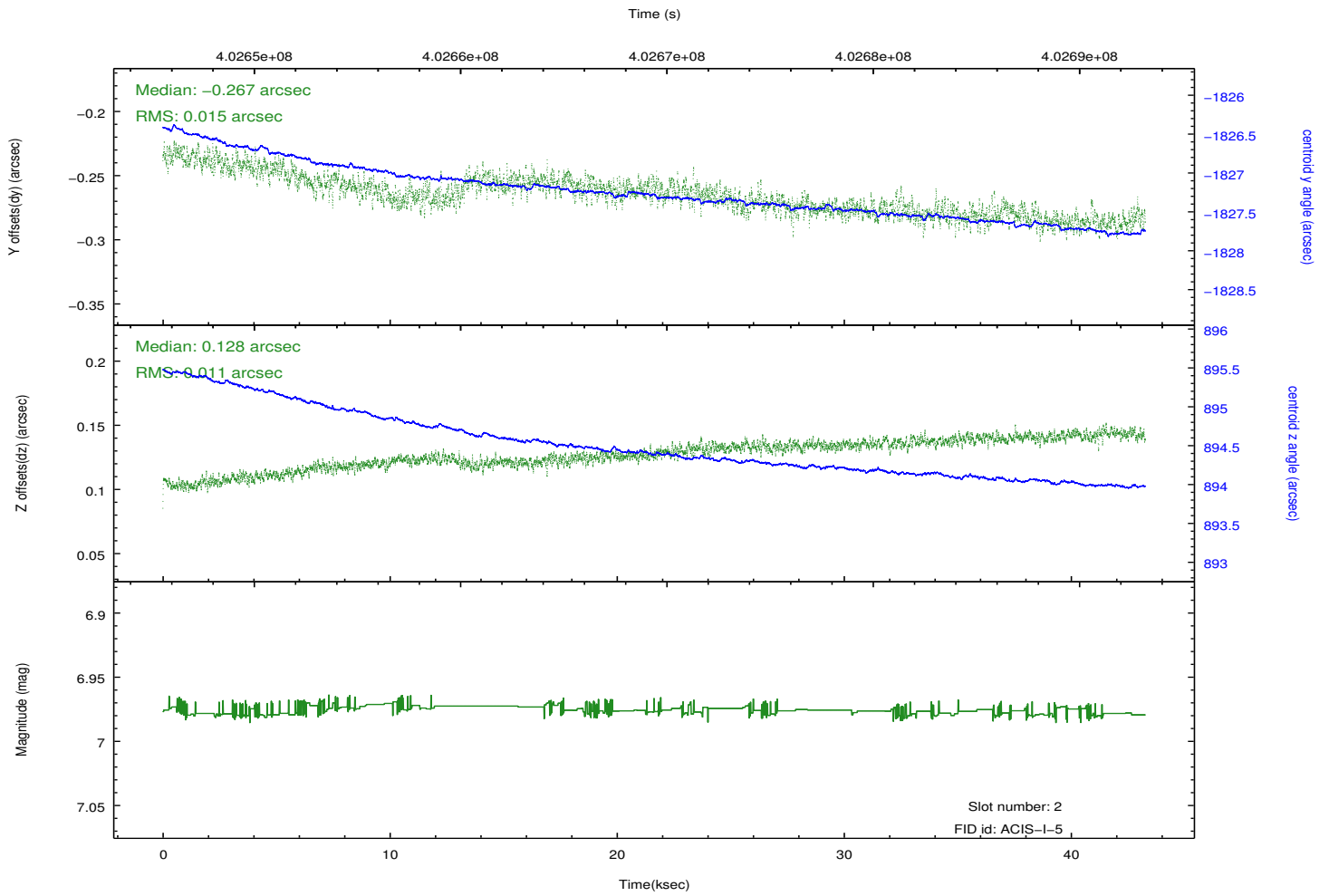
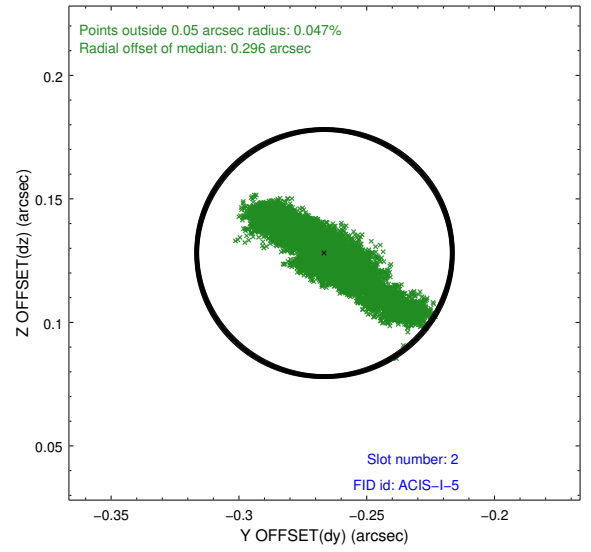
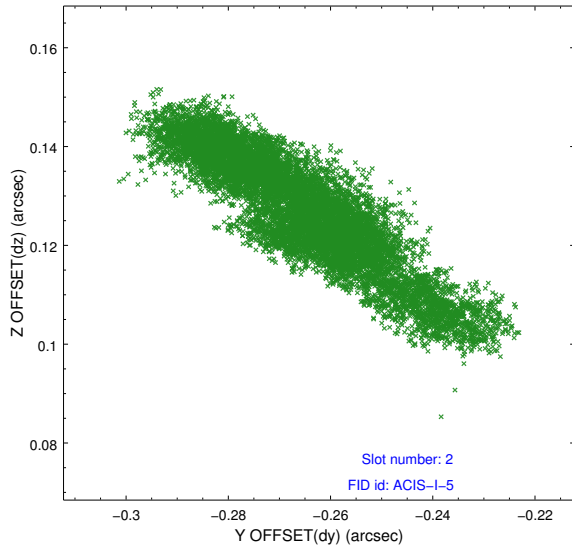
2.5.1 Slot 0



2.5.2 Slot 1



2.5.3 Slot 2



A Summary

A.1 Status

V&V Scientist	Beth Sundheim
V&V Date (YYYY-MM-DD)	2012.07.13
V&V Edition	1
V&V Disposition and Status	OK
V&V Charge Time	42.854359339356

A.2 Comments